

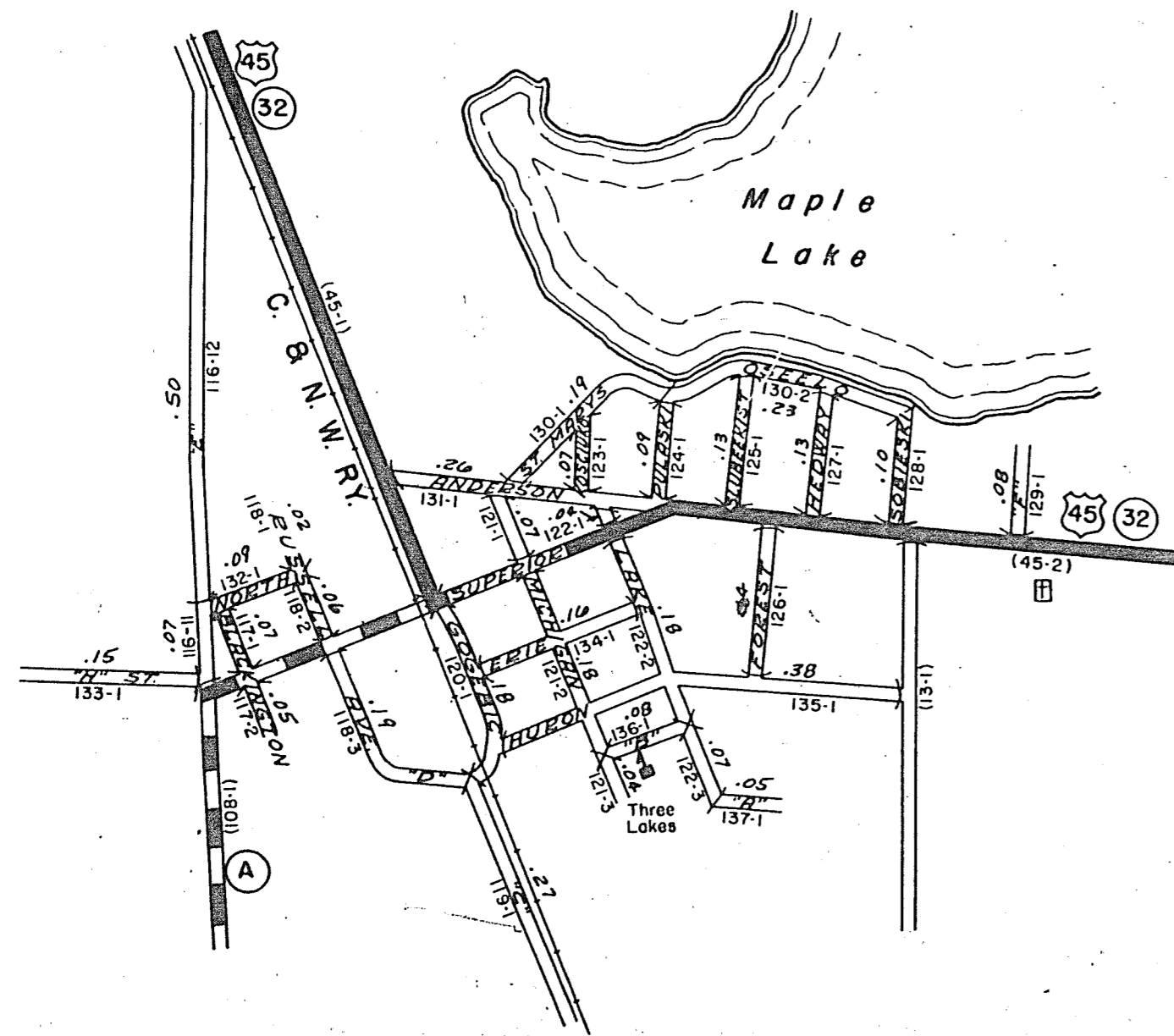
STATE HIGHWAY COMM. OF WISCONSIN
TOWN PLAT RECORD

THREE LAKES - UNINCORPORATED (43-018B)

Date of Last Corr.	State Trunks	County Trunks	Local Roads	Symbols
1-1-64			4.32	Sch. \downarrow
1-1-65			4.32	Cem. \square
1-1-60	0	0	4.40	
1-1-61	0	0	4.40	
1-1-62			4.40	
1-1-63			4.32	

Certified as Correct By Town Chairman: *J. H. ...*

RETURN THIS PLAT



0 500 1500 2500
SCALE IN FEET

THREE LAKES

State Highway Commission
RURAL PLATTED AREA - LOCAL ROAD STREET LIST
Town: Three Lakes Community: Three Lakes (43-018B) County: Oneida Sheet: 1 of 2 Date: 1964 Plat No. 18A-20

Road No.	Street Name	Gross Length		Intersections		Net Length (Feet)	C. H. S.
		Miles	Feet	No.	Ft. Deduct.		
116-11		0.07					
116-12	"E"	0.50					
117-1	Blackington	0.07					
117-2	Blackington	0.05					
118-1	Russell	0.02					
118-2	Russell	0.06					
118-3	RD Avenue	0.19					
119-1	"G"	0.27					
120-1	Gogebic	0.18					
121-1	Michigan	0.07					
121-2	Michigan	0.18					
121-3	Michigan	0.04					
122-1	Lake	0.04					
122-2	Lake	0.18					
122-3	Lake	0.07					
123-1	Kashtuski	0.07					
124-1	Pulaski	0.09					
125-1	Slubeskiet	0.13					
126-1	Forest	0.14					
Totals		2.42					

Certified as Correct: _____ Town Chairman Pay Miles _____

State Highway Commission
RURAL PLATTED AREA - LOCAL ROAD STREET LIST
Town: Three Lakes Community: Three Lakes (43-018B) County: Oneida Sheet: 2 of 2 Date: 1964 Plat No. 18A-20

Road No.	Street Name	Gross Length		Intersections		Net Length (Feet)	C. H. S.
		Miles	Feet	No.	Ft. Deduct.		
127-1	Hedway	0.13					
128-1	Sobkanki	0.10					
129-1	"F" Street	0.08					
130-1	St. Mary's	0.19					
130-2	Cecile	0.23					
131-1	Anderson	0.26					
132-1	North	0.09					
133-1	"H"	0.15					
134-1	Erie	0.16					
135-1	Huron	0.38					
136-1	"B" Street	0.08					
137-1	"A" Street	0.05					
Totals		1.96					
Totals		4.32				21	

Certified as Correct: *J. H. ...* Town Chairman Pay Miles 4.11