

STATE HIGHWAY COMM. OF WISCONSIN
TOWN PLAT RECORD

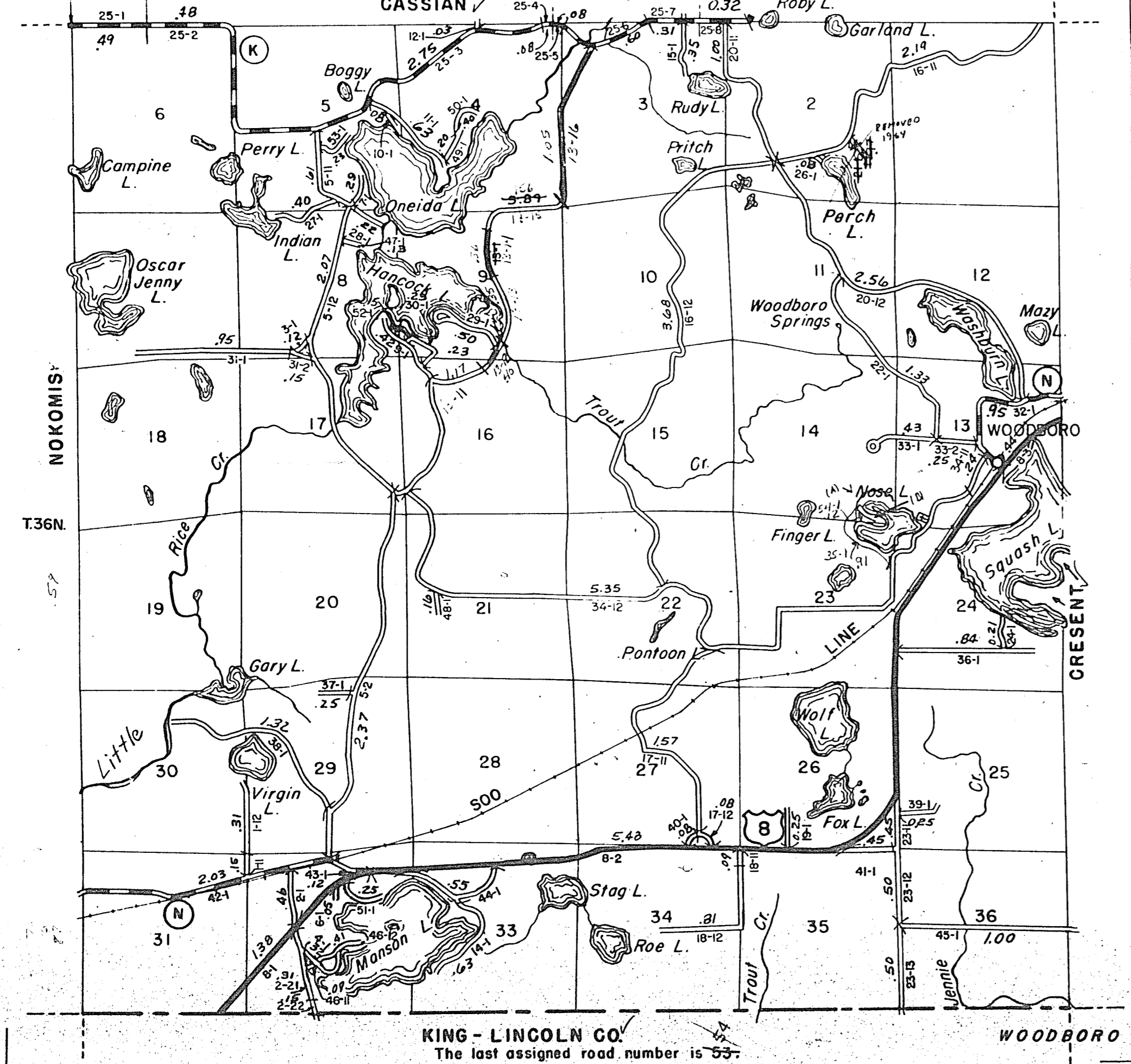
RETURN THIS PLAT

Town - WOODBORO County - ONEIDA (43-019)

Date of Last Corr.	State Trunks	County Trunks	Local Roads	Symbols
1-1-64	7.30	7.21	44.31	Sch. 4
1-1-65	7.30	7.21	43.17	Cem. 11
1-1-60	7.30	7.20	43.72	
1-1-61	7.30	7.20	43.87	
1-1-62	7.30	7.20	44.10	
1-1-63	7.30	7.21	44.31	

Gross Mileage - Deduction for Intersections - Net Pay Mileage
44.31 - 0.32 = 43.99
43.17 - 0.35 = 42.82

Certified as Correct By Town Chairman: *Clifford B. Bunn*
R.7E.



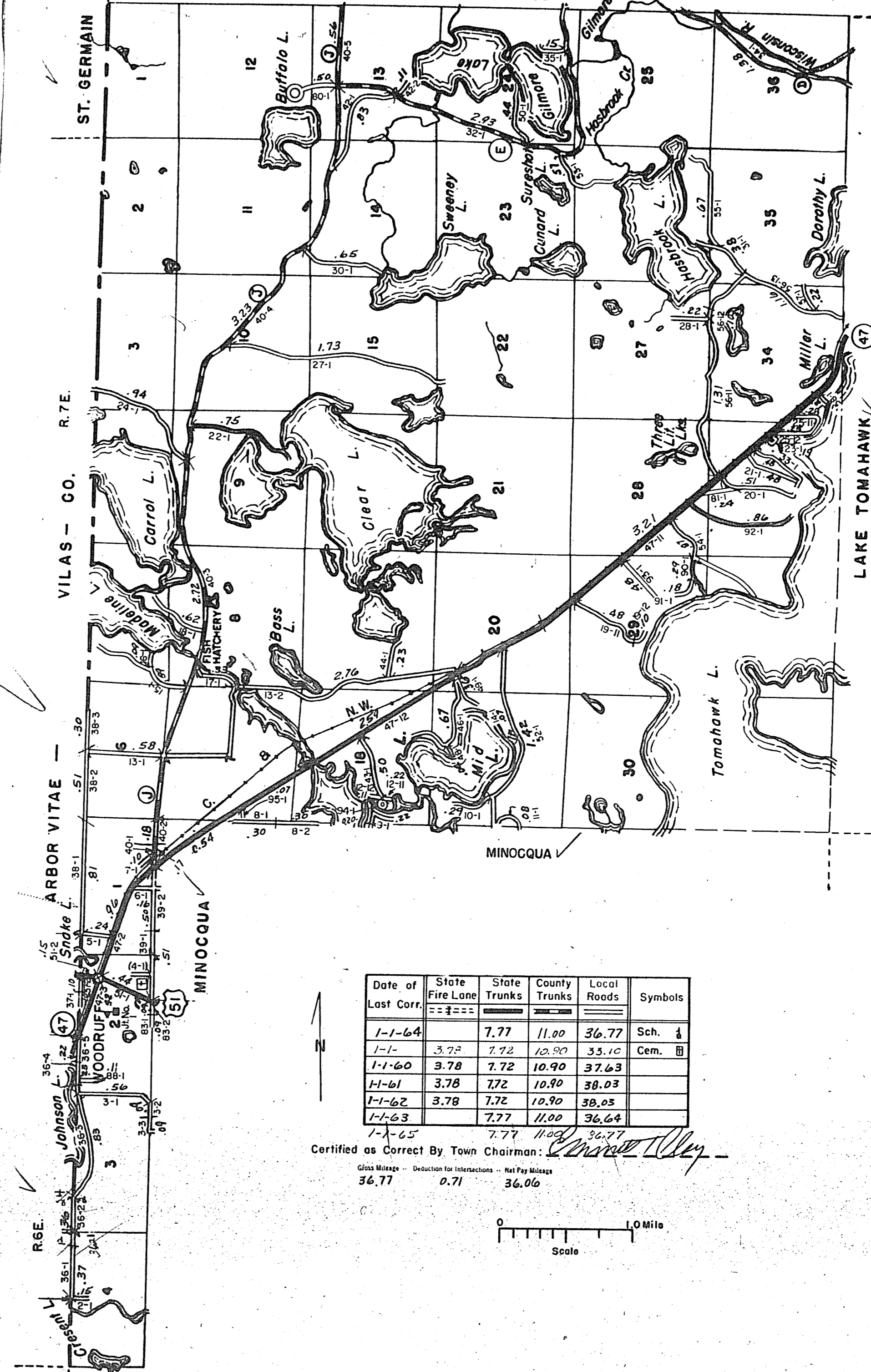
KING - LINCOLN CO.
The last assigned road number is 53.

WOODBORO

STATE HIGHWAY COMM. OF WISCONSIN
TOWN PLAT RECORD

RETURN THIS PLAT

Town - WOODRUFF County - ONEIDA (43-020A)
T. 39 N. NEWBOLD



Date of Last Corr.	State Fire Lane	State Trunks	County Trunks	Local Roads	Symbols
1-1-64		7.77	11.00	36.77	Sch. 4
1-1-	3.72	7.72	10.90	35.10	Cem. 11
1-1-60	3.78	7.72	10.90	37.63	
1-1-61	3.78	7.72	10.90	38.03	
1-1-62	3.78	7.72	10.90	38.03	
1-1-63		7.77	11.00	36.64	
1-1-65		7.77	11.00	36.77	

Certified as Correct By Town Chairman: *Edward W. Wey*

Gross Mileage - Deduction for Intersections - Net Pay Mileage
36.77 - 0.71 = 36.06

The last assigned road number is 97.

WOODRUFF