

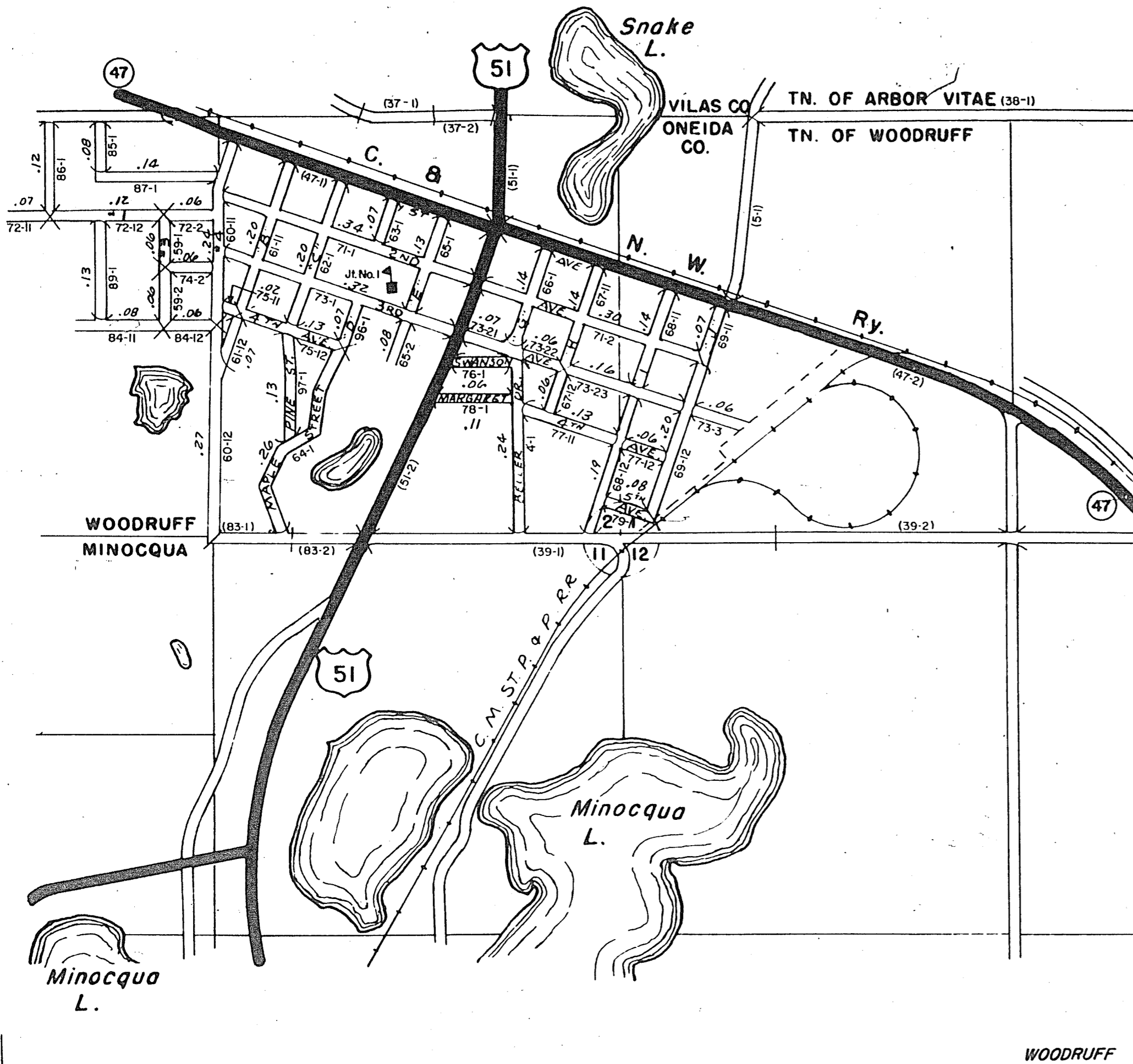
STATE HIGHWAY COMM. OF WISCONSIN
TOWN PLAT RECORD

RETURN THIS PLAT

WOODRUFF-UNINCORPORATED (43-020B)

Date of Last Corr.	State Trunks	County Trunks	Local Roads	Symbols
1-1-64	1.48		5.84	Sch. 4
1-1-65	1.48		5.84	Cem. II
1-1-66	1.48	0	5.81	
1-1-61	1.48		6.05	
1-1-62	1.48		6.05	
1-1-63	1.48		5.71	

Certified as Correct By Town Chairman: *Emmett Oley*



RETURN THIS PLAT

State Highway Commission of Wisconsin
RURAL PLATTED AREA - LOCAL ROAD STREET LIST
Town: Woodruff Community: Woodruff (43-020B) County: Oneida

Road No.	Street Name	Gross Length		Intersections		Net Length (Feet)	C
		Miles	Feet	No.	Ft. Dist.		
41-1	Beller Drive	0.24					✓
59-1	Third Street	0.06					✓
59-2	Third Street	0.06					✓
60-11	Fourth Street	0.24					✓
60-12	Fourth Street	0.27					✓
61-11	"A" Street	0.20					✓
61-12	"B" Street	0.07					✓
62-1	"C" Street	0.20					✓
63-1	"D" Street	0.07					✓
64-1	Maple Street	0.26					✓
65-1	"E" Street	0.13					✓
65-2	"F" Street	0.08					✓
66-1	"G" Street	0.11					✓
67-11	"H" Street	0.11					✓
67-12	"I" Street	0.06					✓
68-11	"J" Street	0.11					✓
68-12	"K" Street	0.19					✓
69-11	"L" Street	0.07					✓
69-12	"M" Street	0.20					✓
Totals		2.82					

Certified as Correct: *Emmett Oley* Town Chairman

RETURN THIS PLAT

State Highway Commission of Wisconsin
RURAL PLATTED AREA - LOCAL ROAD STREET LIST
Town: Woodruff Community: Woodruff (43-020B) County: Oneida

Road No.	Street Name	Gross Length		Intersections		Net Length (Feet)	C
		Miles	Feet	No.	Ft. Dist.		
71-1	2nd Avenue	0.24					✓
71-2	2nd Avenue	0.30					✓
72-11		0.07					✓
72-12		0.12					✓
72-2		0.06					✓
73-1	3rd Avenue	0.32					✓
73-21	3rd Avenue	0.07					✓
73-22	3rd Avenue	0.06					✓
73-23	3rd Avenue	0.16					✓
73-3	3rd Avenue	0.06					✓
74-2		0.06					✓
75-11	4th Avenue	0.02					✓
75-12	4th Avenue	0.13					✓
76-1	Bradston	0.06					✓
77-11	4th Avenue	0.13					✓
77-12	4th Avenue	0.06					✓
78-1	Margaret	0.11					✓
Totals		2.13					

Certified as Correct: *Emmett Oley* Town Chairman

RETURN THIS PLAT

State Highway Commission of Wisconsin
RURAL PLATTED AREA - LOCAL ROAD STREET LIST
Town: Woodruff Community: Woodruff (43-020B) County: Oneida

Road No.	Street Name	Gross Length		Intersections		Net Length (Feet)	C
		Miles	Feet	No.	Ft. Dist.		
79-1	5th Avenue	0.08					✓
81-11		0.08					✓
81-12		0.06					✓
85-1		0.08					✓
86-1		0.12					✓
87-1		0.11					✓
89-1		0.13					✓
96-1	"P" Street	0.07					✓
97-1	Pine Street	0.13					✓
Totals		0.89					
Totals		5.84	36				

Certified as Correct: *Emmett Oley* Town Chairman