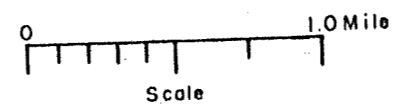


STATE HIGHWAY COMM. OF WISCONSIN
TOWN PLAT RECORD

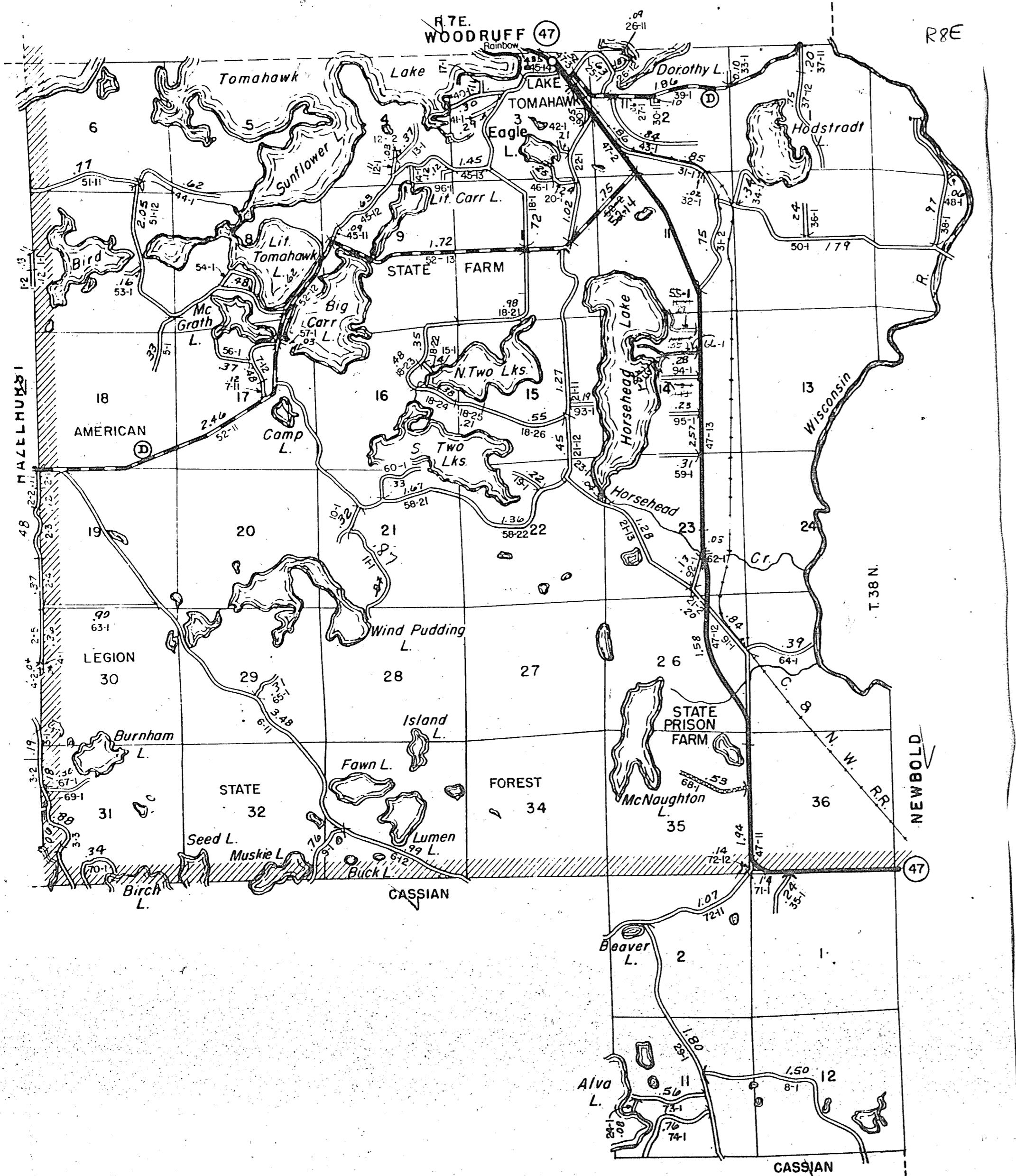
RETURN THIS PLAT

Town - LAKE TOMAHAWK		County - ONEIDA (43-005A)			
Date of Last Corr.	State Fire Lane	State Trunks	County Trunks	Local Roads	State Park Roads
1-1-64		7.47	7.41	50.27	Sch. 4 .53
1-1-65		7.47	7.41	50.27	Cem. 11 .53
1-1-66		7.47	7.41	51.24	.53
1-1-61	3.76	7.29	7.39	48.97	.53
1-1-62	3.76	7.29	7.39	48.97	.53
1-1-63		7.47	7.41	49.77	.53



Gross Mileage ~~50.44~~ 51.24
 Deduction for Intersections ~~1.74~~ .54
 Net Pay Mileage ~~48.70~~ 50.70

Certified as Correct By Town Chairman: *Ray Sloan*



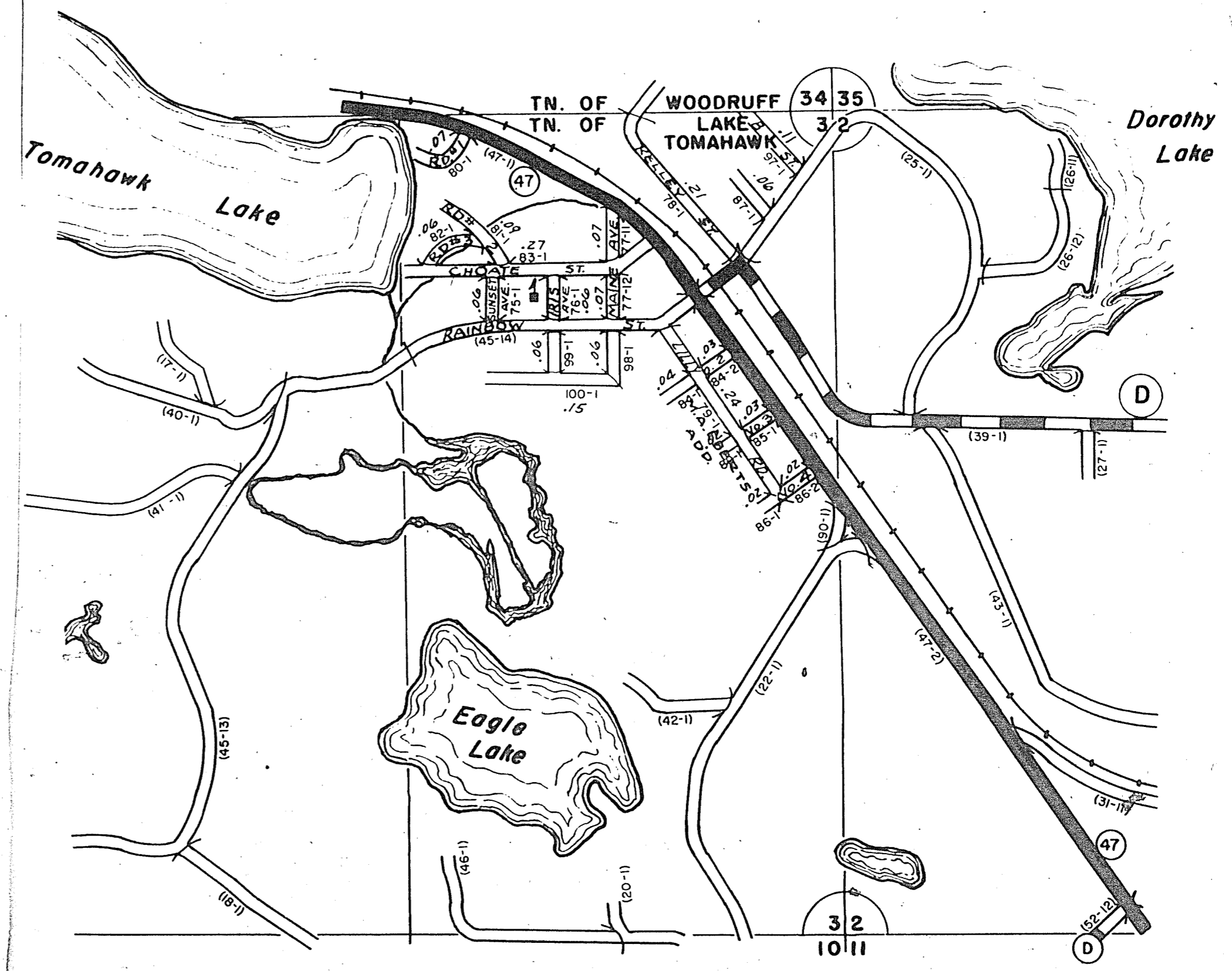
The last assigned road number is 169
100 LAKE TOMAHAWK

STATE HIGHWAY COMM. OF WISCONSIN
LAKE TOMAHAWK UNINCORPORATED

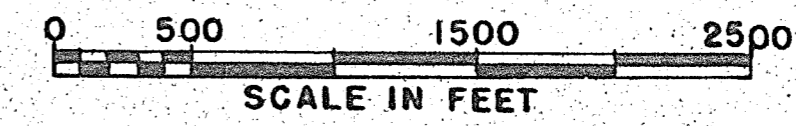
RETURN THIS PLAT

Town - LK. TOMAHAWK		County - ONEIDA (43-005B)		
Date of Last Corr.	State Trunks	County Trunks	Local Roads	Symbols
1-1-65			1.80	Sch. 4
1-1-66			1.10	Cem. 11
1-1-61			1.57	
1-1-62			1.57	
1-1-63			1.80	
1-1-64			1.80	

Certified as Correct By Town Chairman: *Ray Sloan*



BID - 4E-41 & 6E-114



LAKE TOMAHAWK