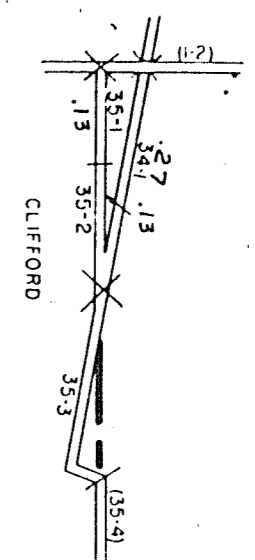


STATE HIGHWAY COMM. OF WISCONSIN
TOWN PLAT RECORD

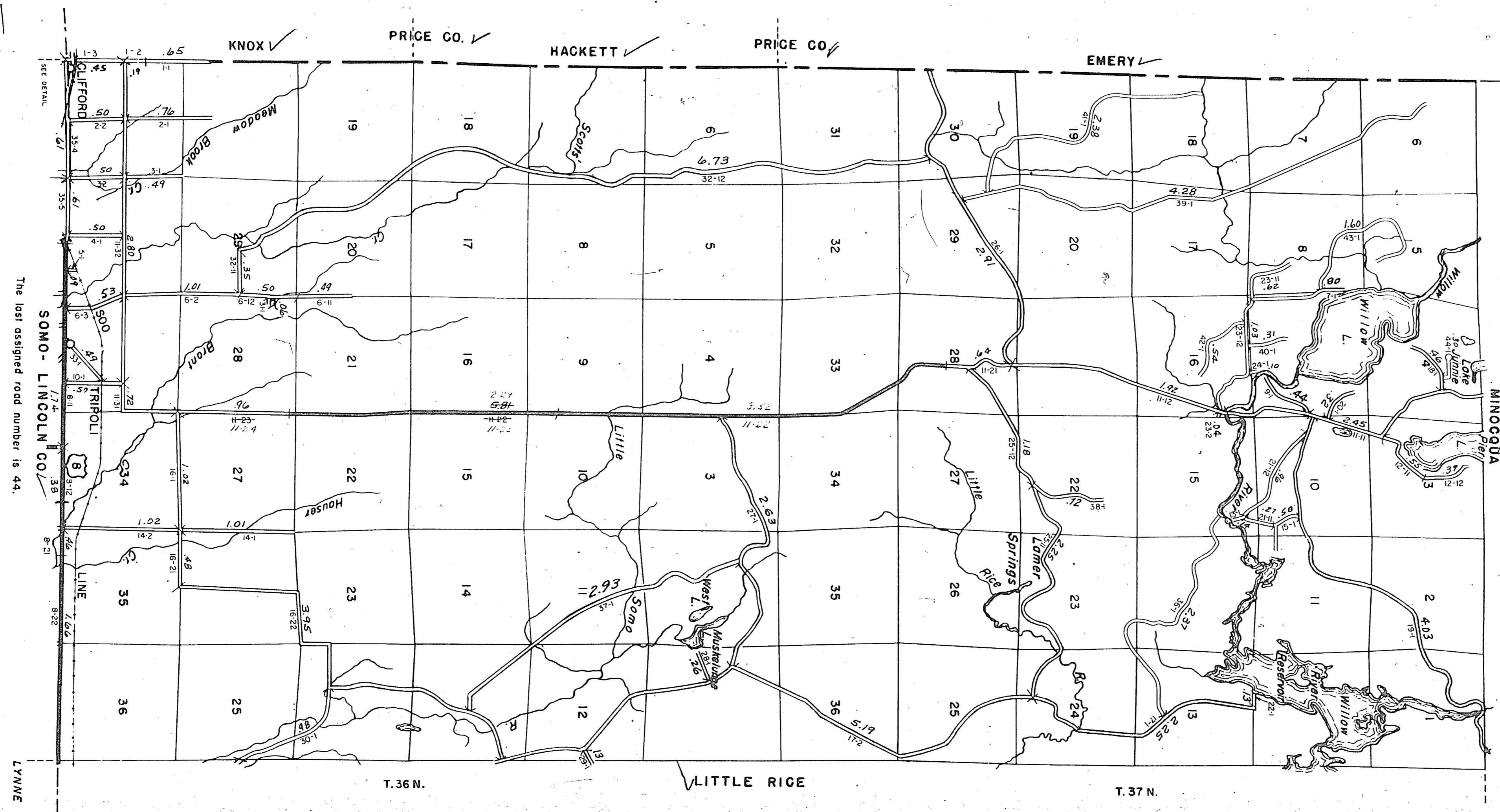
RETURN THIS PLAT

7-20



Town - LYNN		County - ONEIDA		(43-007)	
Date of	State	County	Local	Symbol	
Lost Cont.	Trunks	Trunks	Roads	Chm.	
1-1-64	2.12		82.00	Chm.	4
1-1-65	2.12		82.00	Chm.	4
1-1-61	2.12		73.77		
1-1-62	2.12		73.77		
1-1-63	2.12		73.69		

Certified as Correct By Town Chairman *Walter Delleck*
R. 4 E.



The last assigned road number is 44.

LYNNE