

STATE HIGHWAY COMM. OF WISCONSIN  
TOWN PLAT RECORD

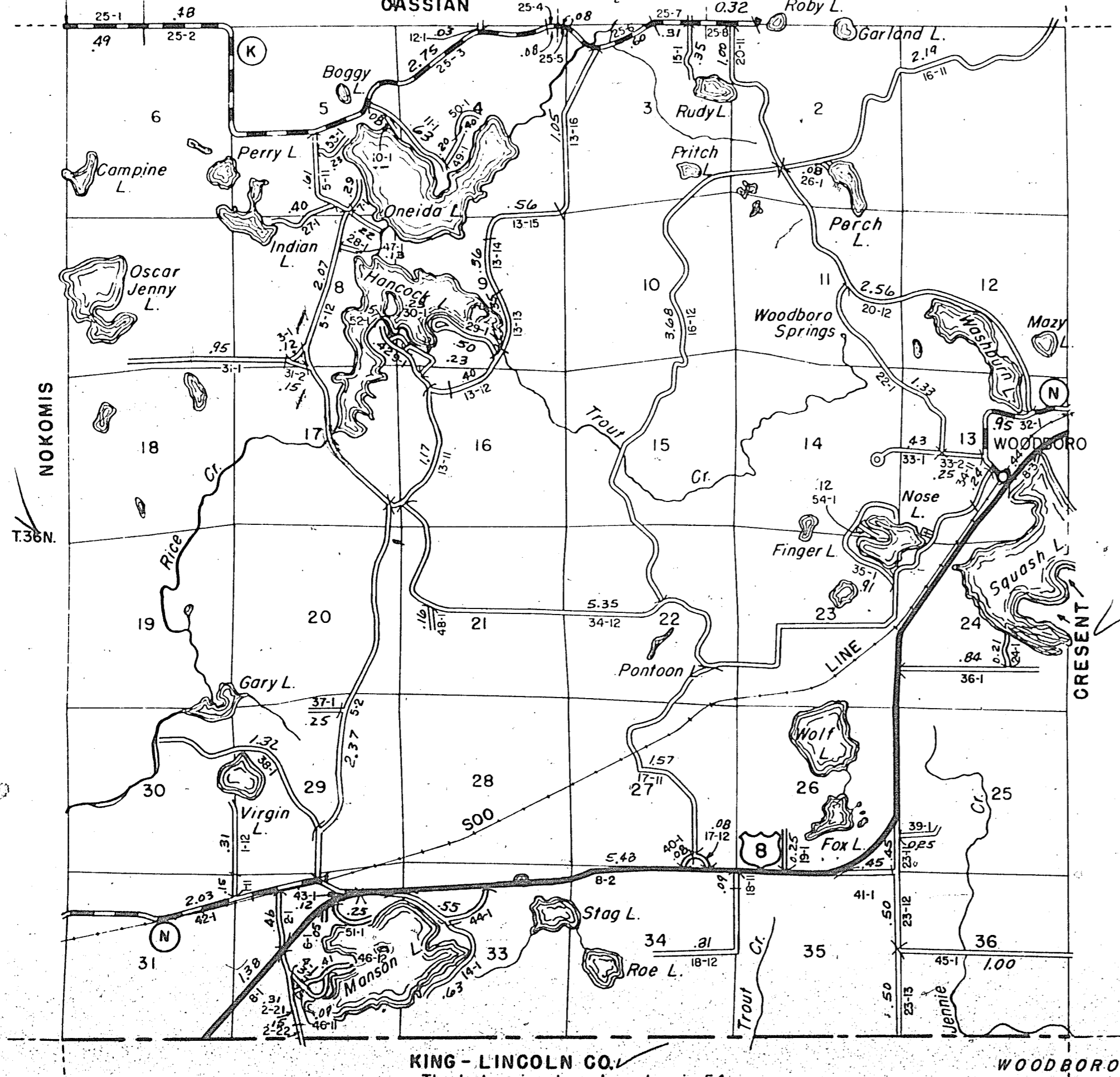
Town - WOODBORO County - ONEIDA (43-019)

Date of Last Corr.	State Trunks	County Trunks	Local Roads	Symbols
1-1-64	7.30	7.21	44.31	Sch. 4
1-1-65	7.30	7.21	45.17	Cem. 1
1-1-66	7.30	7.21	45.17	
1-1-61	7.30	7.20	43.87	
1-1-62	7.30	7.20	44.10	
1-1-63	7.30	7.21	44.31	

RETURN THIS PLAT

Gross Mileage 45.17 Deduction for Intersections 0.33 Net Pay Mileage 44.84

Certified as Correct By Town Chairman: *Walter Reed*  
R.T.E.



KING - LINCOLN CO.  
The last assigned road number is 54.

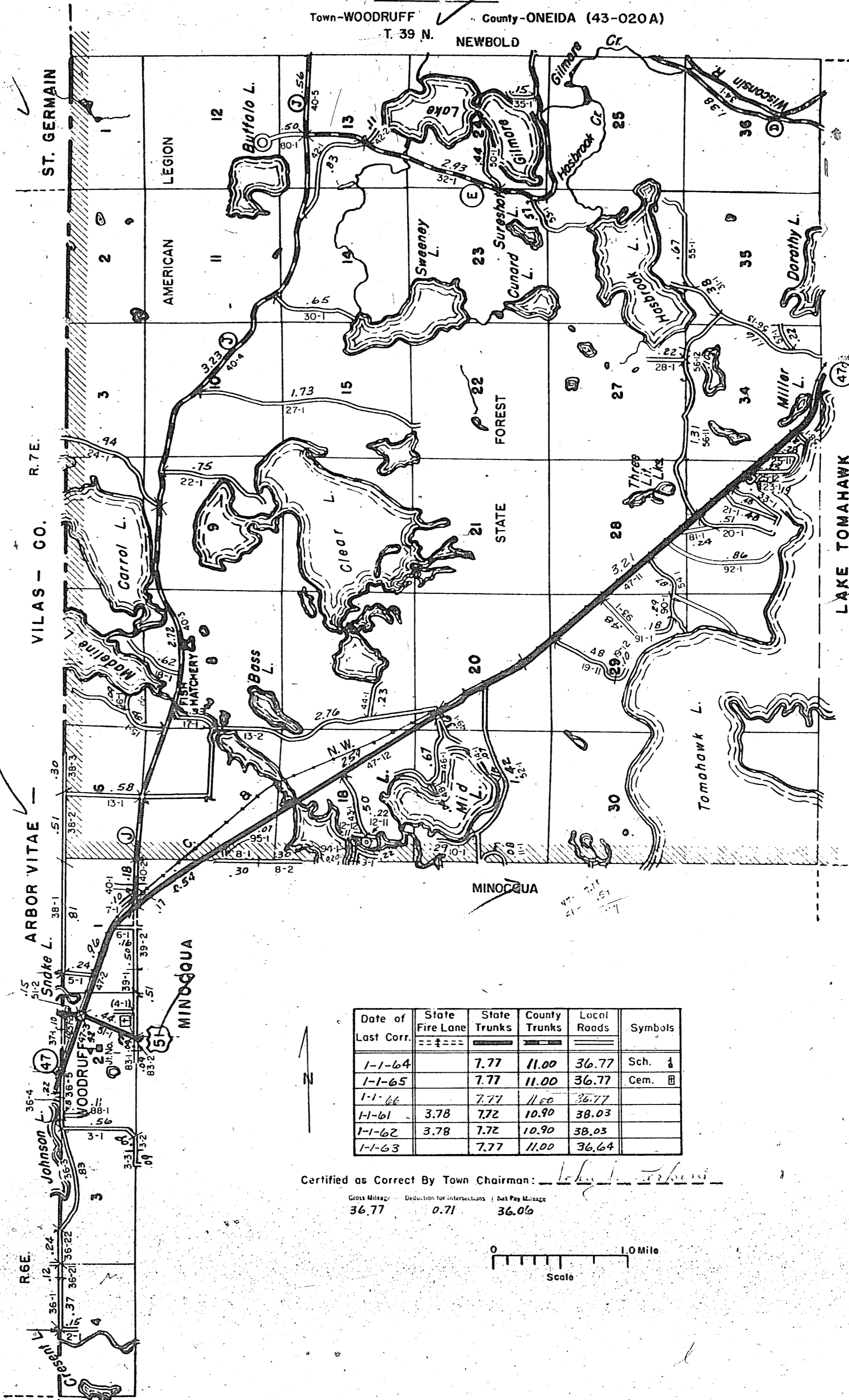
WOODBORO

RETURN THIS PLAT

20-20

STATE HIGHWAY COMM. OF WISCONSIN  
TOWN PLAT RECORD

Town - WOODRUFF County - ONEIDA (43-020A)  
T. 39 N. NEWBOLD



Date of Last Corr.	State Fire Lane	State Trunks	County Trunks	Local Roads	Symbols
1-1-64		7.77	11.00	36.77	Sch. 4
1-1-65		7.77	11.00	36.77	Cem. 1
1-1-66		7.77	11.00	36.77	
1-1-61	3.78	7.72	10.90	38.03	
1-1-62	3.78	7.72	10.90	38.03	
1-1-63		7.77	11.00	36.64	

Certified as Correct By Town Chairman: *Walter Reed*

Gross Mileage 36.77 Deduction for Intersections 0.71 Net Pay Mileage 36.06

Scale 1.0 Mile

The last assigned road number is 97.

WOODRUFF