

STATE HIGHWAY COMM. OF WISCONSIN
TOWN PLAT RECORD

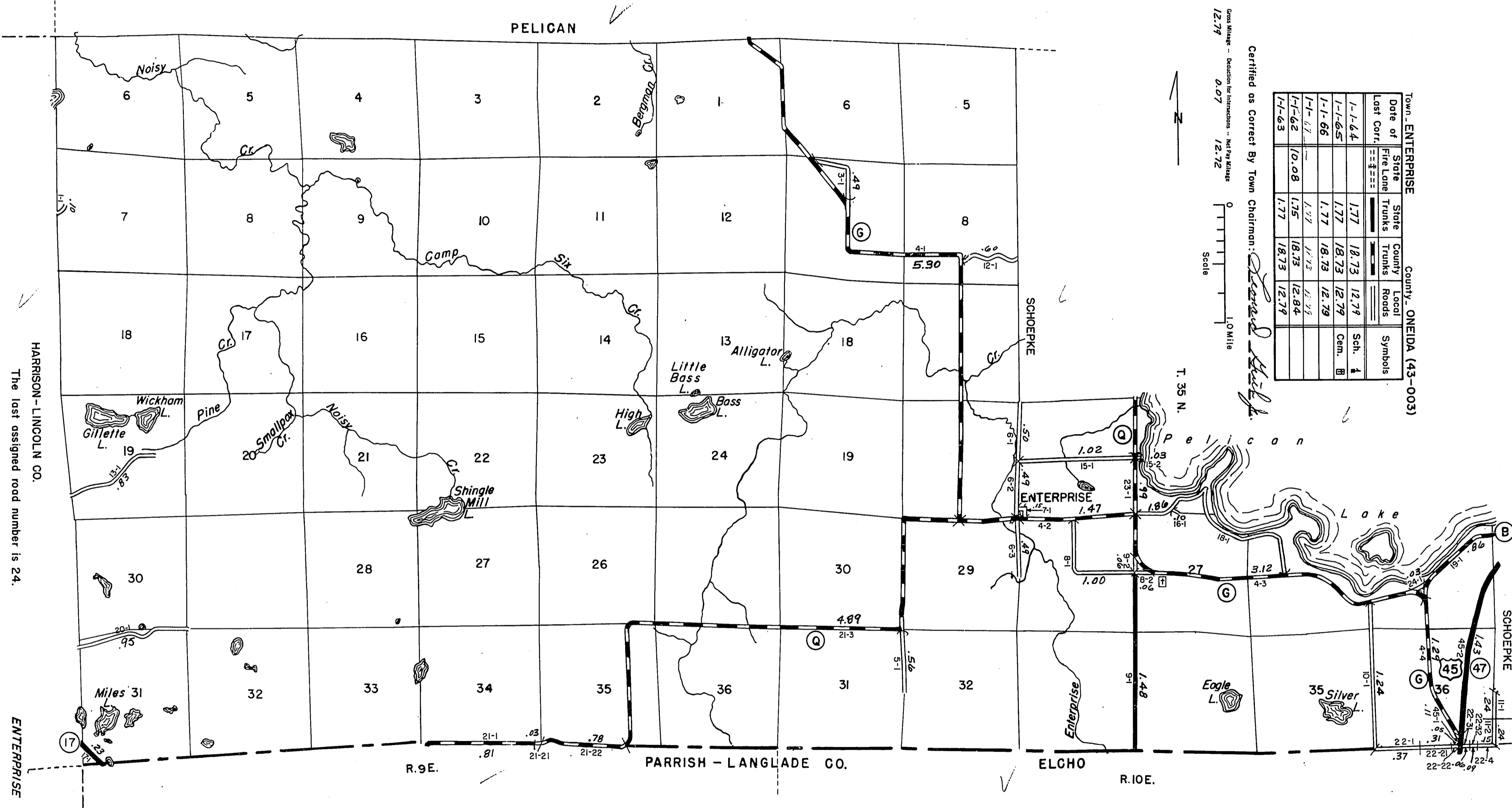
RETURN THIS PLAT

3-20

TOWN - ENTERPRISE				COUNTY - ONEIDA (43-003)			
Date of Last Conf.	Fire Lane Trunks	State Trunks	County Trunks	Local Roads	Local Cem.	Symbol	
1-1-64	---	1.77	18.73	12.78		Sch. 1	
1-1-65	---	1.77	18.73	12.78		Cem. B	
1-1-66	---	1.77	18.73	12.78			
1-1-67	---	1.77	18.73	12.78			
1-1-68	---	1.77	18.73	12.78			
1-1-63	---	1.77	18.73	12.78			

Certified as Correct By Town Chairman: *[Signature]*

Scale 0 1.0 Mile
Gross Weight - 12.79
Net Weight - 0.07
Gross Volume - 12.72
Net Volume - 1.0 Mile



HARRISON - LINCOLN CO.
The last assigned road number is 24.

ENTERPRISE