

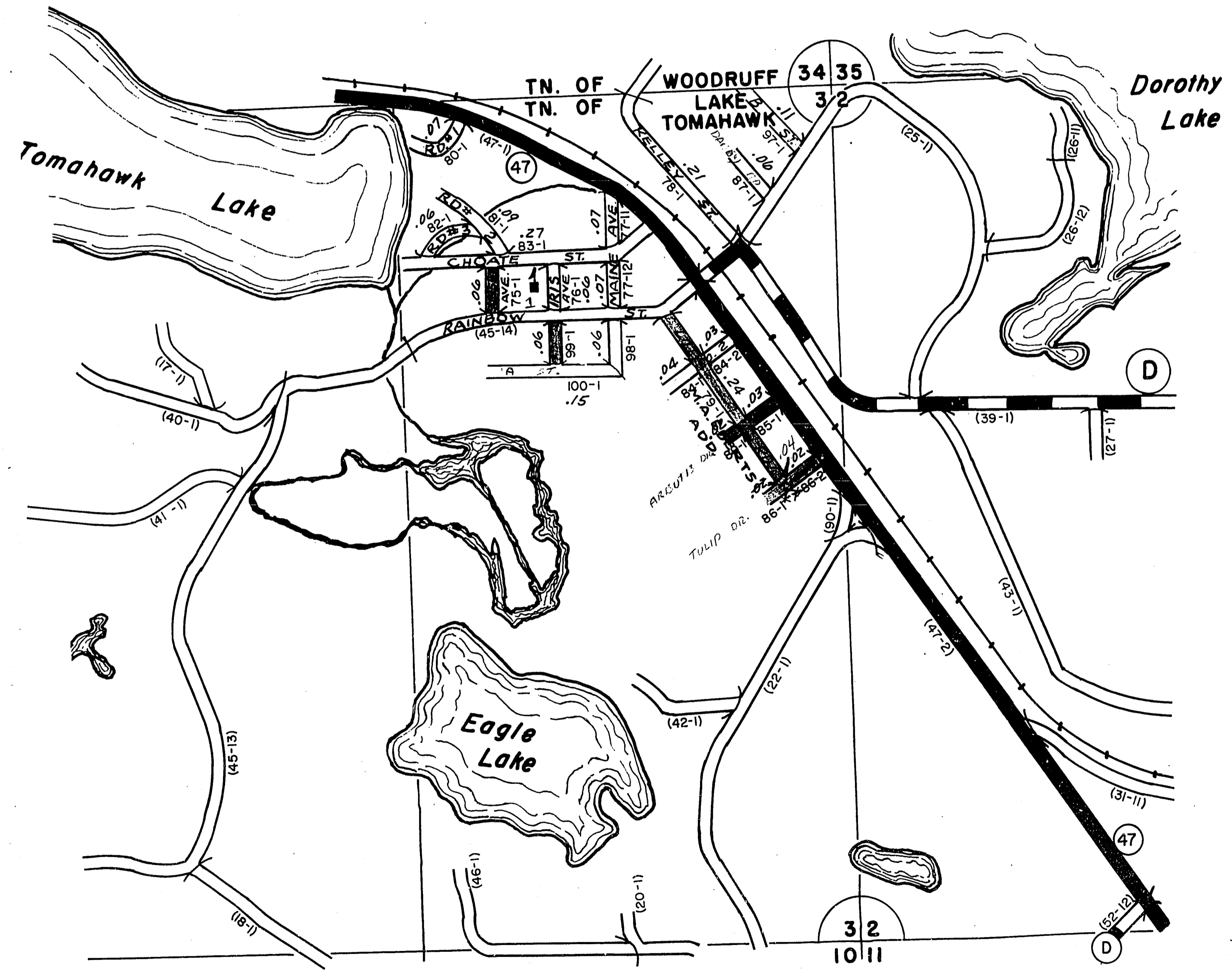
RETURN THIS PLAT

STATE HIGHWAY COMM. OF WISCONSIN
LAKE TOMAHAWK UNINCORPORATED

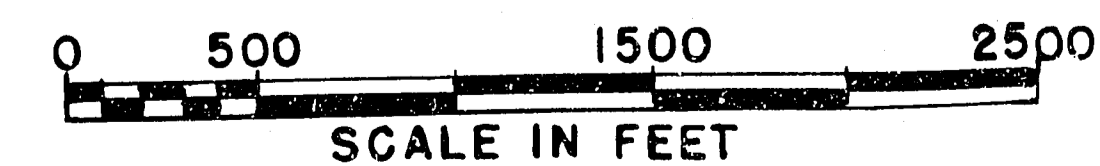
Town - LK. TOMAHAWK County - ONEIDA (43 - 005B)

| Date of Last Corr. | State Trunks | County Trunks | Local Roads | Symbols |
|--------------------|--------------|---------------|-------------|---------|
| 1-1-65 | | | 1.80 | Sch. 4 |
| 1-1-66 | | | 1.80 | Cem. 11 |
| 1-1-67 | | | 1.10 | |
| 1-1-62 | | | 1.57 | |
| 1-1-63 | | | 1.80 | |
| 1-1-64 | | | 1.80 | |

Certified as Correct By Town Chairman: *Raymond D. Ploore*
9/17/66



BID - 4E-41 & 6E-114



LAKE TOMAHAWK