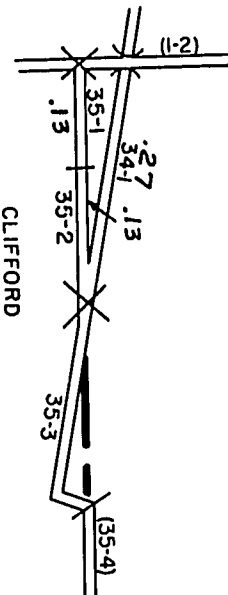


STATE HIGHWAY COMM. OF WISCONSIN

TOWN PLAT RECORD

Town - LYNNE County - ONEIDA (43-007)

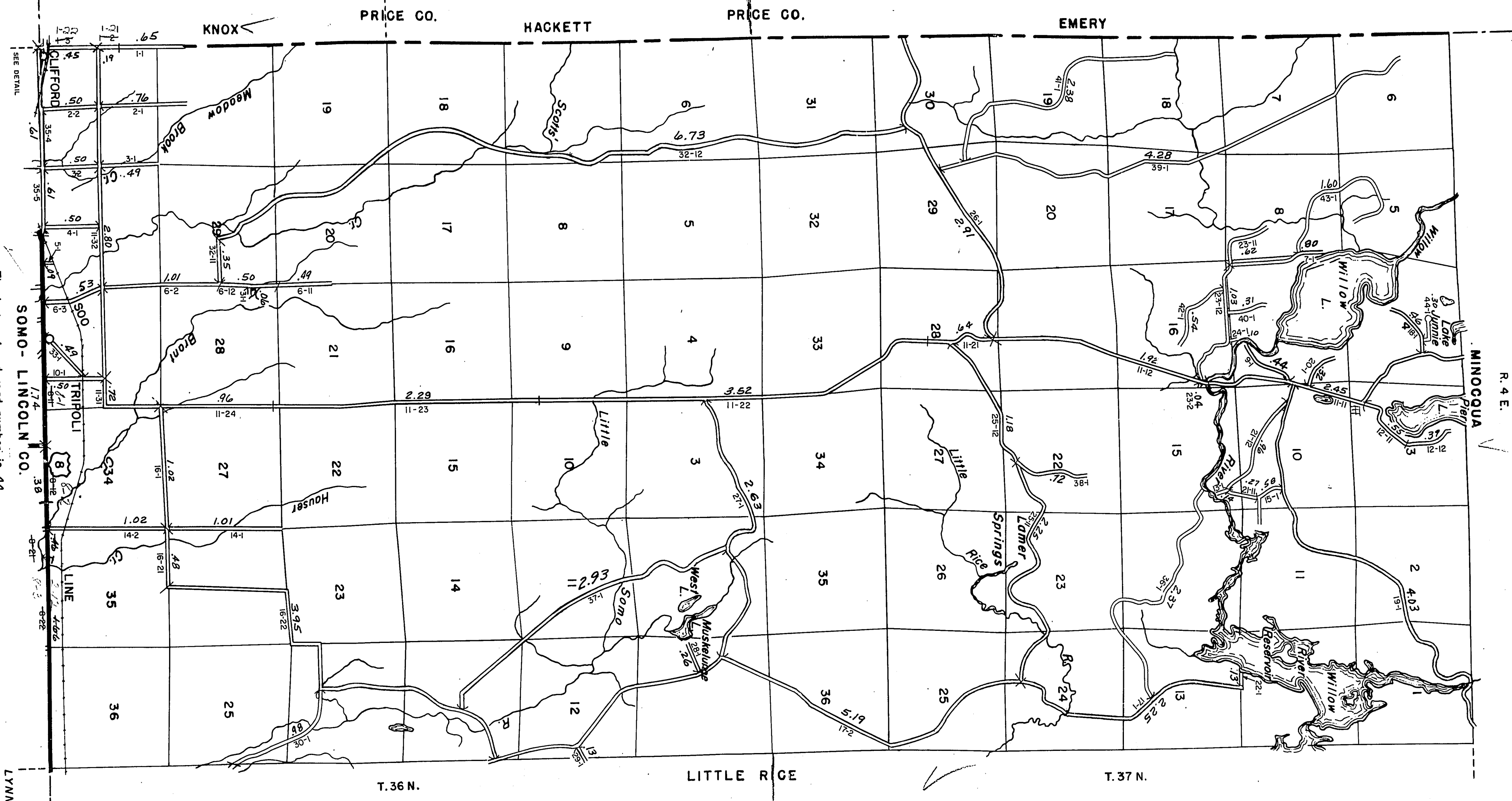
RETURN THIS PLAT



| Date of Lost Cert. | State Trunks | County Trunks | Local Roads | Symbols |
|--------------------|--------------|---------------|-------------|---------|
| 1-1-64 | 2.12 | | 82.00 | Sch. 4 |
| 1-1-65 | 2.12 | | 82.00 | Com. B |
| 1-1-66 | 2.12 | | 82.00 | |
| 1-1-67 | 2.12 | | 73.77 | |
| 1-1-68 | 2.12 | | 73.89 | |

Certified as Correct By Town Chairman: *[Signature]*

R. 4 E.



The last assigned road number is 44.