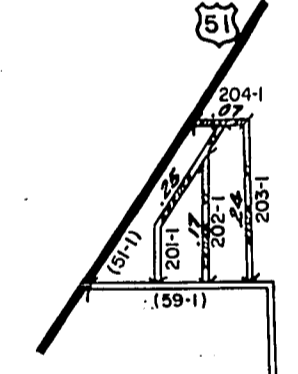
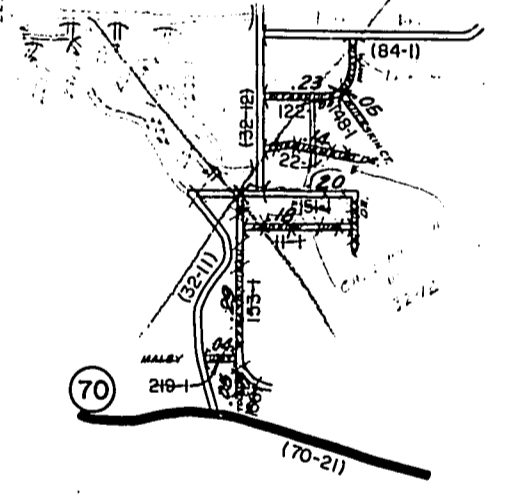
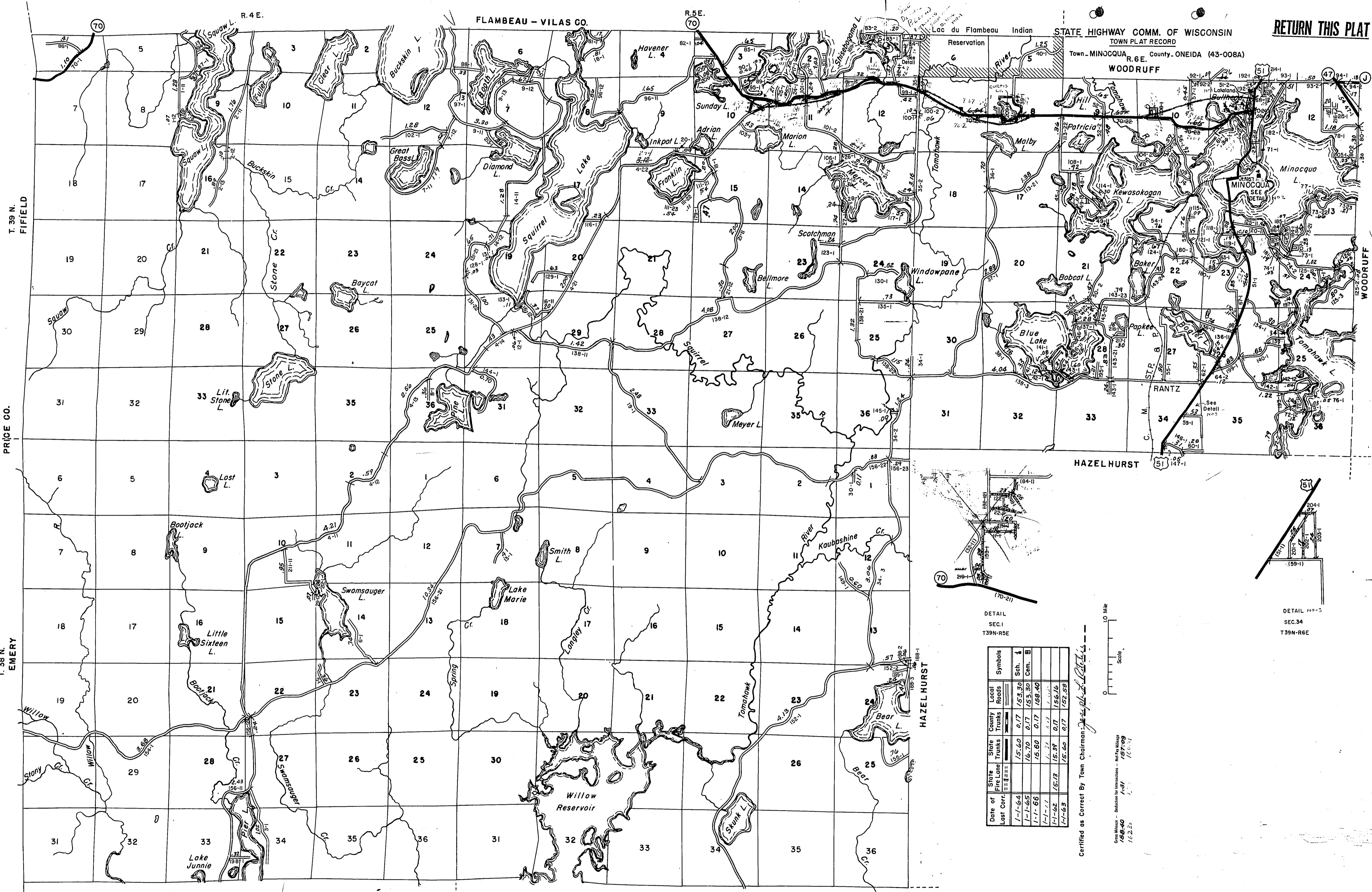


RETURN THIS PLAT

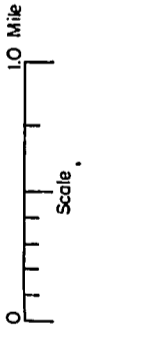
STATE HIGHWAY COMM. OF WISCONSIN
TOWN PLAT RECORD
Town - MINOCQUA R. 6 E. County - ONEIDA (43-008A)
WOODRUFF



DETAIL
SEC. 1
T39N-R5E

Date of Last Carr.	State Fire Lane	County Trunks	Local Roads	Symbols
1-1-64	15.60	0.17	153.30	Sch. 1
1-1-65	16.70	0.17	153.30	Cem. B
1-1-66	16.60	0.17	168.40	
1-1-67	15.18	0.17	168.40	
1-1-68	15.18	0.17	152.50	

Certified as correct By Town Chairman *[Signature]*



Cons. Meters - 1/65-40
1/65-40
1/65-40
1/65-40

DETAIL 149-5
SEC. 34
T39N-R6E

The last assigned road number is 219.

MINOCQUA