

STATE HIGHWAY COMM. OF WISCONSIN

TOWN PLAT RECORD

RETURN THIS PLAT

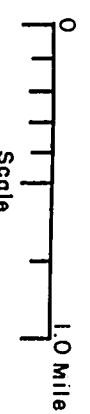
6-20

Town, LITTLE RICE		County, ONEIDA (43-006)		Symbols	
Date of Last Cert.	State Fire Lane	County Trunks	Local Roads	Sch.	Cem.
1-1-64	0.46	9.67	41.01	Sch. 1	
1-1-65	0.46	9.67	42.16	Cem. 8	
1-1-66	.46	9.67	42.16		
1-1-77	.46	9.67	42.16		
1-1-62	0.46	9.67	40.04		
1-1-63	0.46	9.67	41.01		

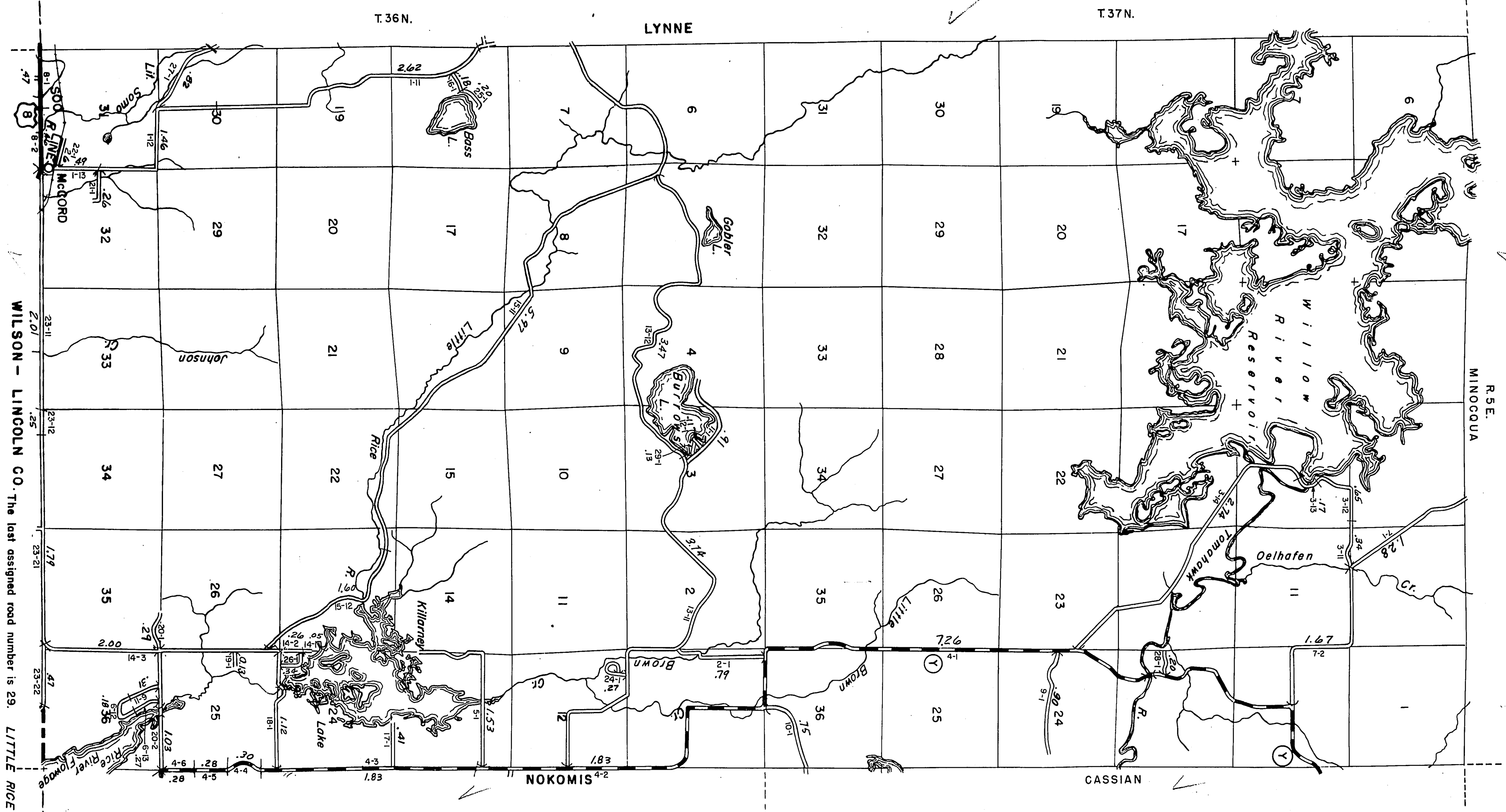
Data Merged - Dependent on Instructions - Not Pay Merged

0.14

42.02



Certified as Correct By Town Chairman: *Flavel B. Bawle*



WILSON - LINCOLN CO. The last assigned road number is 29. LITTLE RICE