

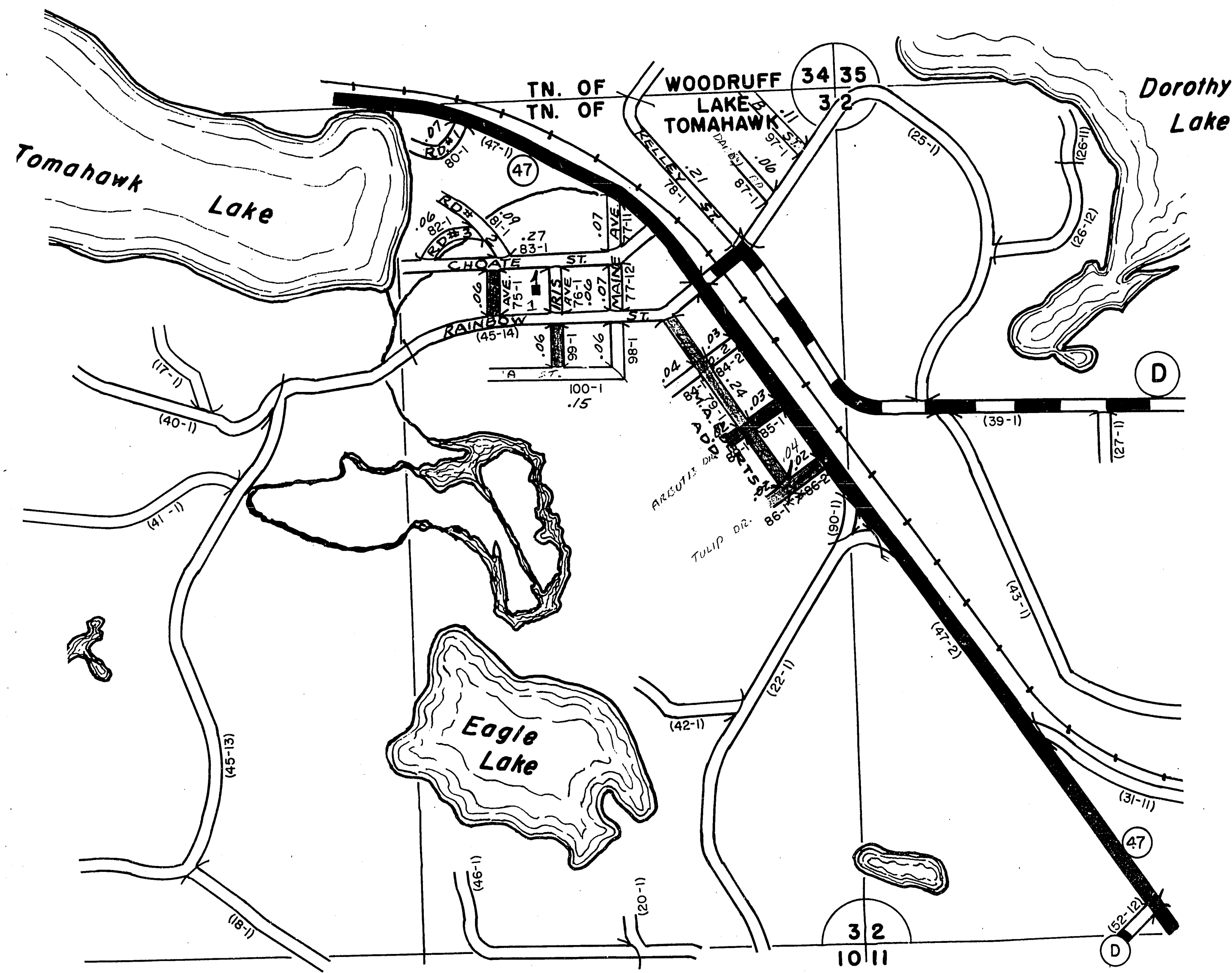
RETURN THIS PLAT

STATE HIGHWAY COMM. OF WISCONSIN
LAKE TOMAHAWK UNINCORPORATED

Town LK. TOMAHAWK County ONEIDA (43 - 005B)

Date of Last Corr.	State Trunks	County Trunks	Local Roads	Symbols
1-1-65			1.80	Sch. 1
1-1-66			1.80	Cem. □
1-1-67			1.00	
1-1-62			1.57	
1-1-63			1.80	
1-1-64			1.80	

Certified as Correct By Town Chairman *Raymond D. Plow*
9/1/66



BID - 4E-41 & 6E-114



LAKE TOMAHAWK