

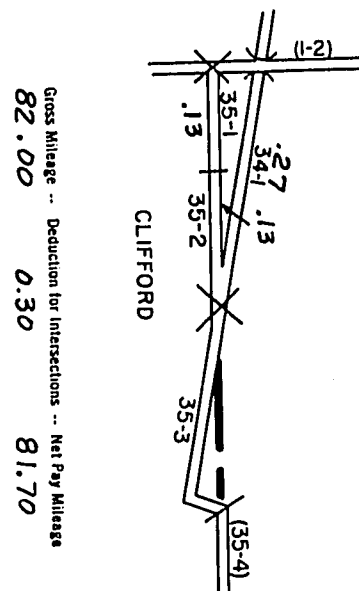
STATE HIGHWAY COMM. OF WISCONSIN

RETURN THIS PLAT

TOWN PLAT RECORD

County - ONEIDA

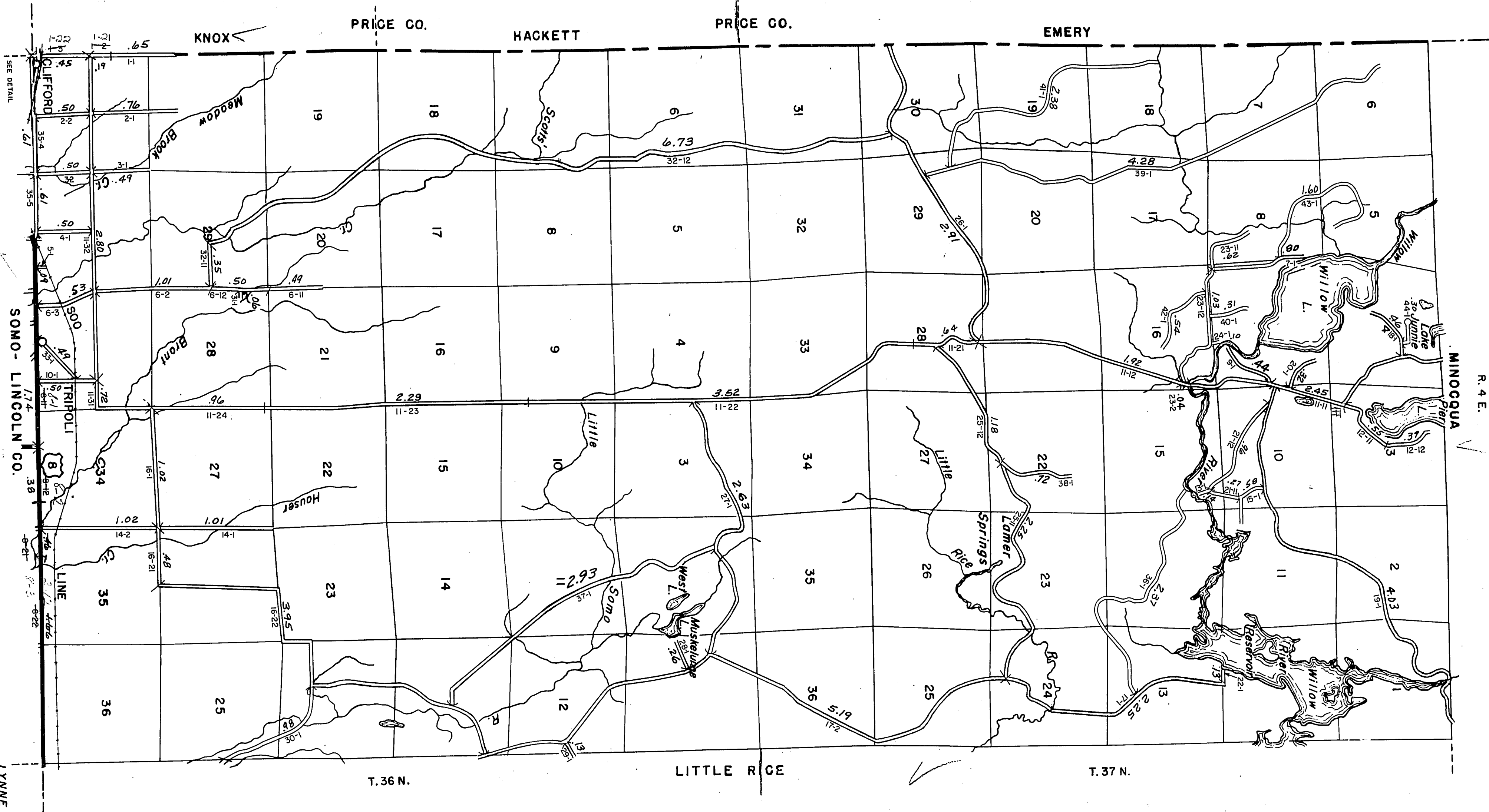
(43-007)



Date of Lost Cont.	State Trunks	County Trunks	Local Roads	Local Symbols
1-1-64	2.12		82.00	Sch. 4
1-1-65	2.12		82.00	Cam. B
1-1-66	2.12		82.00	
1-1-67	2.12		72.00	
1-1-68	2.12		73.77	
1-1-69	2.12		73.89	

Certified as Correct By Town Chairman, *Wesley D. Kelly*

R. 4 E.



The last assigned road number is 44.