

RETURN THIS PLAT

15-20

STATE HIGHWAY COMM. OF WISCONSIN

TOWN PLAT RECORD

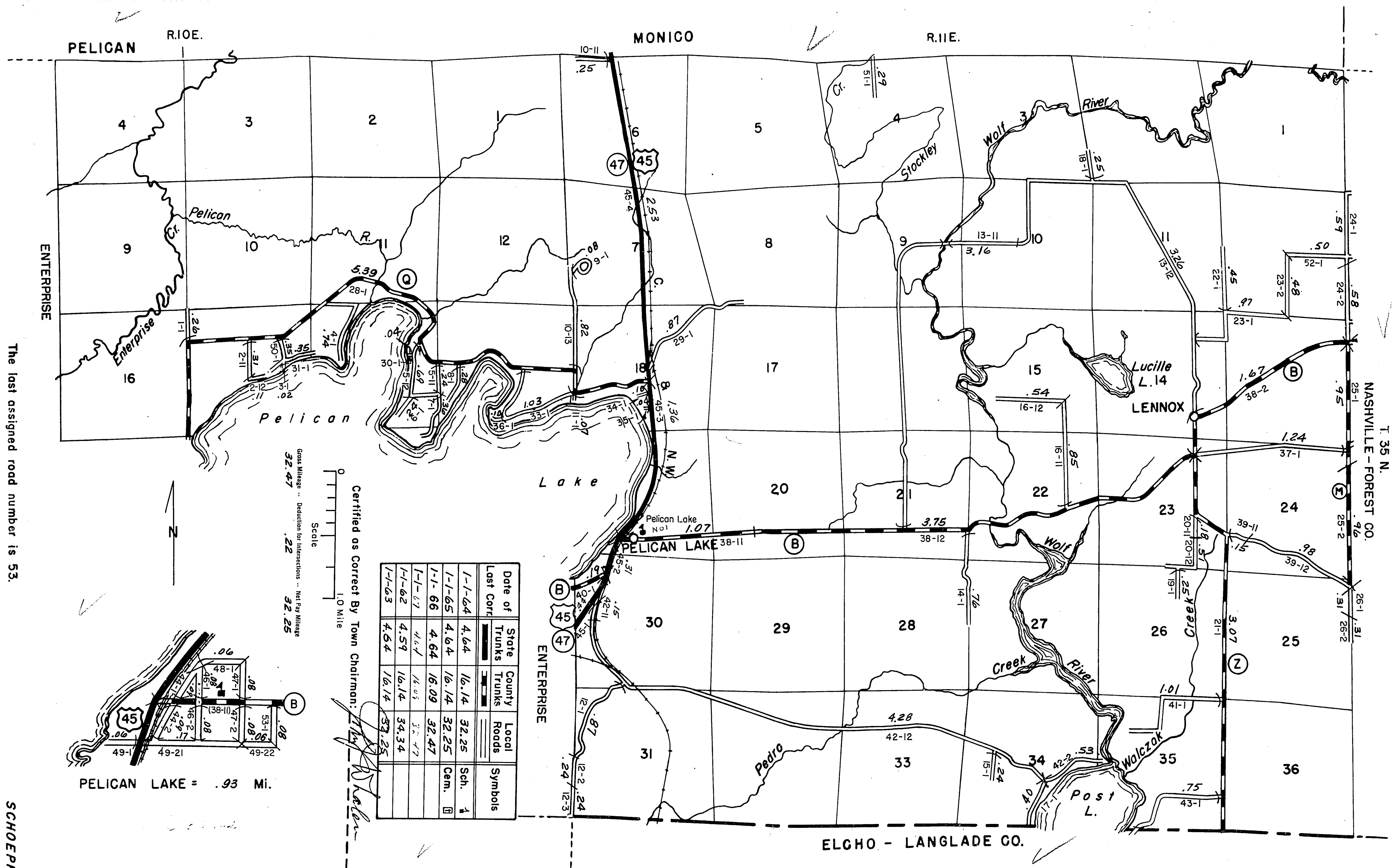
Town - SCHOEPEKE

County - ONEIDA

(43-015)

NASHVILLE - FOREST CO.

T. 35 N.

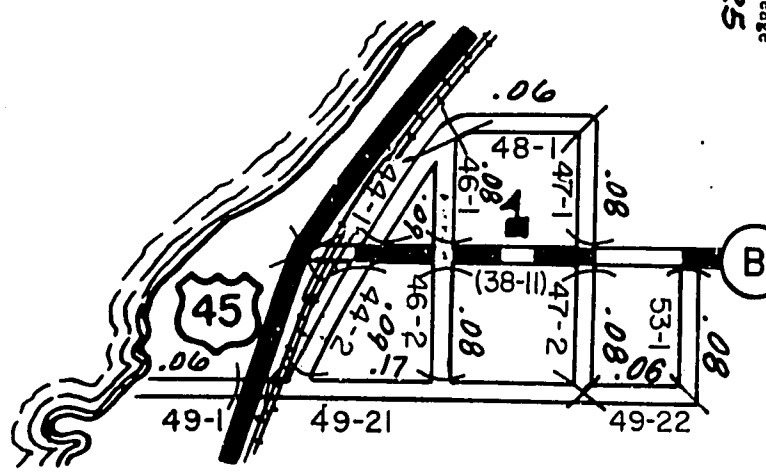


Date of Last Corr.	State Trunks	County Trunks	Local Roads	Symbols
1-1-64	4.64	16.14	32.25	Sch. 1
1-1-65	4.64	16.14	32.25	
1-1-66	4.64	16.09	32.47	Cem. □
1-1-67	4.64	16.03	32.47	
1-1-68	4.59	16.14	34.34	
1-1-63	4.64	16.14	33.25	

Certified as Correct By Town Chairman: *[Signature]*

Gross Mileage ... Deduction for Intersections ... Net Pay Mileage

32.47 .22 32.25



The last assigned road number is 53.

SCHOEPEKE