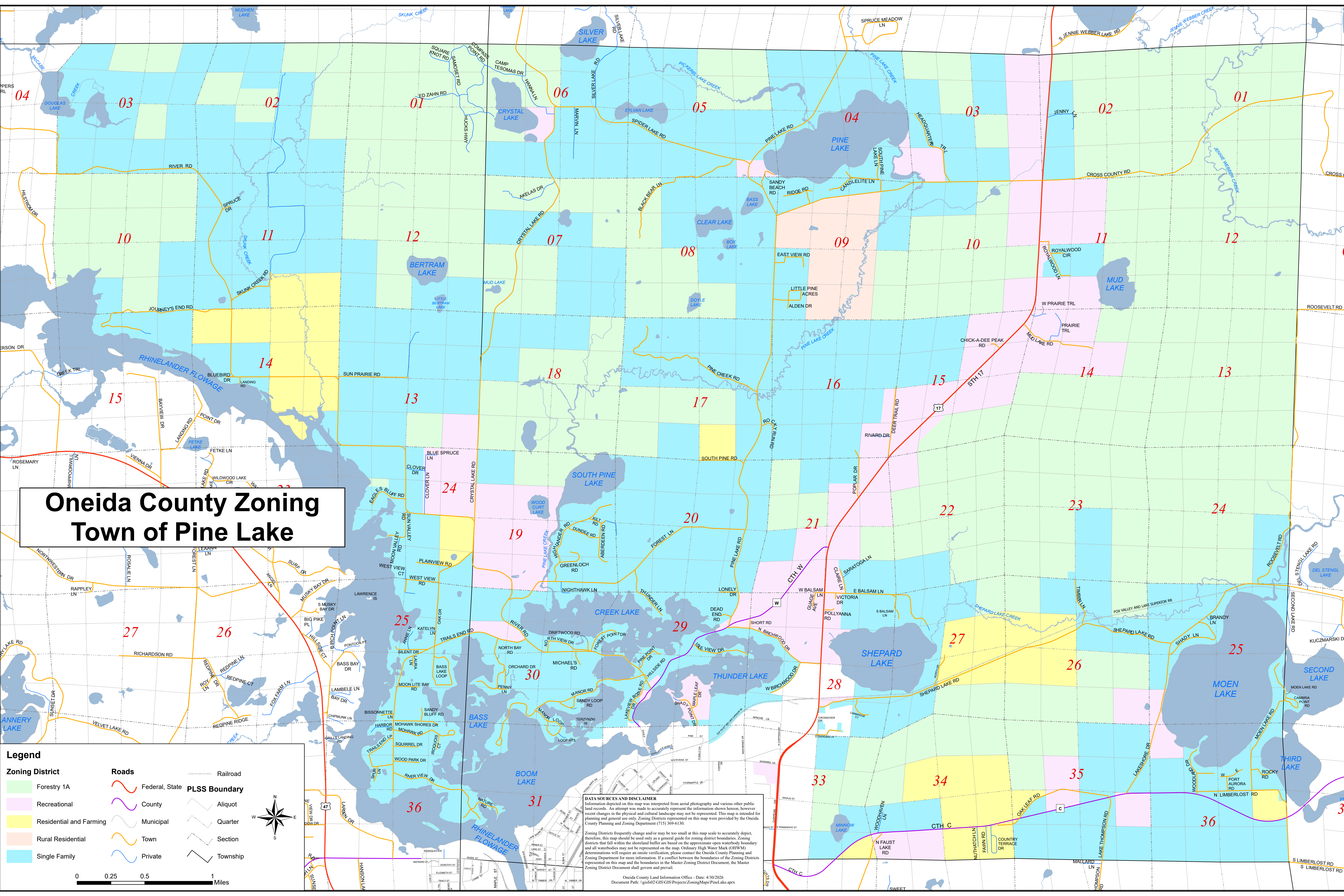


# Oneida County Zoning Town of Pine Lake



**Legend**

<b>Zoning District</b>	<b>Roads</b>	<b>Railroad</b>
Forestry 1A	Federal, State	PLSS Boundary
Recreational	County	Aliquot
Residential and Farming	Municipal	Quarter
Rural Residential	Town	Section
Single Family	Private	Township

0 0.25 0.5 1 Miles

**DATA SOURCES AND DISCLAIMER**  
 Information depicted on this map was interpreted from aerial photography and various other public land records. An attempt was made to accurately represent the information shown hereon, however recent changes in the physical and cultural landscape may not be represented. This map is intended for planning and general use only. Zoning Districts represented on this map were provided by the Oneida County Planning and Zoning Department (715) 369-6130.  
 Zoning Districts frequently change and/or may be too small at this map scale to accurately depict, therefore, this map should be used only as a general guide for zoning district boundaries. Zoning districts that fall within the shoreland buffer are based on the approximate open waterbody boundary and all waterbodies may not be represented on the map. Ordinary High Water Mark (OHWM) determinations will require an onsite verification, please contact the Oneida County Planning and Zoning Department for more information. If a conflict between the boundaries of the Zoning Districts represented on this map and the boundaries in the Master Zoning District Document, the Master Zoning District Document shall govern and prevail.  
 Oneida County Land Information Office - Date: 4/30/2026  
 Document Path: \\gis\GIS\Projects\Zoning\Map\PineLake.aprx