

M
A
I
N
E
1
9
4
2

DIARY

1942

Property of
Royce Maine

DIARY

Talics	1	1	1	17	1	1
	2	2	2	18	2	2
	3	3	3	19	3	
	4	4	4	20		
	5	5	5	21		
	6	6	6			
	7	7	7			
	8	8	8			
	9	9	9			
	10	10	10			
	11	11	11			
	12	12	12			
	13	13	13			
	14	14	14			
	15	15	15			
				16		

Sunday, January 1, 1939

1st Day - 364 Days to Follow

New Year's Day

Sec. 4-38-6

The west line of sec. 4.

Started at north sec. corner

51 $\frac{7}{10}$ Pine BT. 16

10 Leare swamp

400 wire fence

525 edge of swamp

1341 $\frac{8}{10}$ $\frac{1}{8}$ stake in swamp

1481 Leare swamp

3545 $\frac{2}{10}$ add $\frac{4}{10}$

Fell 91 $\frac{1}{10}$ west

Total distance 3550 $\frac{3}{10}$

Oak 21 $\frac{1}{10}$, 10 inch S. 20 W.

Maple 14 $\frac{1}{10}$ 4 inch S. 70 E.

306 $\frac{3}{10}$ center of road

380 $\frac{1}{10}$ center of road

477 old fence

728 to road center

2

Monday, January 2, 1939

2nd Day—363 Days to Follow

892 $\frac{4}{10}$ to hub994 $\frac{7}{10}$ to hub on

Lake shore

Base of triangulation is 170

Angles 82°52' 165°44'

82°51' 165°44'

82°51' 165°44'

82°51' —

5801 $\frac{1}{10}$ began

68 to edge of creek

600 center creek

6065 leave creek

7693 enter swamp

7991 $\frac{7}{10}$ total distanceFell 11 $\frac{5}{10}$ west

Travis 100

50

158
100

Thursday

Tuesday, January 3, 1939

3rd Day—362 Days to Follow

3

7800 set stick for correction
of west section lineStarted at the south east
section corner and ran
west

477 leave swamp

Time out for lunch

Started chaining at 2100

2140 to center of logging
road runs NW and SE

3175 center of logging

road runs N and S

3717 center of logging

road runs NE and SW

4400 enter swamp

4669 leave swamp

5578 enter swamp

5923 edge of Kitty creek

4⁵⁸
93
Wednesday, January 4, 1939
4th Day—361 Days to Follow

5964 west edge of Kitty crocks
6066 west side of swamp
6718 $\frac{6}{10}$ stopped to go to bed
First chain 81 $\frac{5}{10}$
Road 6736 runs N and S
Set table stake at 80 chains
Road 530 runs E and W
2083 enter pot hole
2182 leave pot hole
2600 edge of swamp
2950 leave swamp
Stopped for day at table eight

Thursday, January 5, 1939 5
5th Day—360 Days to Follow

4066 edge of sand pit
4112 edge of sand pit
4183 edge of swamp
4312 edge of creek
4343 edge of island
4352 other edge of island
4405 other edge of creek
6558 edge of swamp
7550 $\frac{9}{10}$ to hub set in
our east and west line
fell 2 $\frac{9}{10}$ west of 8000
chains on east and west
line
8695 $\frac{8}{10}$ set hub in road
Time to go home
Went 1 $\frac{2}{10}$ for first chain

8

Sunday, January 8, 1939
8th Day—357 Days to Follow

165 $\frac{7}{10}$ V Pine post
200 feet set hub
384 enter swamp
570 leave swamp
732 center of road
running N and S
1025 $\frac{7}{10}$ to stake
fell $\frac{7}{10}$ North
145 center of road
400 enter swamp
733 leave swamp
765 center of road
fell $\frac{4}{10}$ North
990 $\frac{7}{10}$ total distance

9

Monday, January 9, 1939
9th Day—356 Days to Follow

Saturday Oct 11, 1941

Transverse lake
Base = 2 chains
angles $85^{\circ}15'$
 $170^{\circ}27'$
follow $85^{\circ}11'$, $170^{\circ}24'$
 $85^{\circ}12'$, $170^{\circ}25'$
 $85^{\circ}12'$, $170^{\circ}24'$
1114 $\frac{5}{10}$, 3496 $\frac{2}{10}$
3587.5 to hub
3626 edge of swamp
T. 85. inswp.
4400 leave swamp
Stopped for day at 4500 vertical
Road 51'62"

10 Tuesday, January 10, 1939
10th Day—355 Days to Follow

6724.7 to hub in North
and south line

369 $\frac{7}{8}$ felt east of post

Pine 10 40.9

Pine 17 40.8

Go 72.50 to end

Wednesday, January 11, 1939
11th Day—354 Days to Follow

Arnett

2 limb offset nest from fence

2026

8 chains enter swamp

1231 Leave swamp

1500 enter swamp

2026 set in swamp

followed old fence down
for line

2059.1 to $\frac{1}{2}$ post

51 W.P. 6 529 $\frac{1}{2}$ W. 22 $\frac{5}{10}$

51 T. 3 539 $\frac{1}{2}$ E 32 $\frac{7}{10}$

Friday Nov. 7 1941

Thursday January 12, 1939

12th Day—353 Days to Follow

12

Ray Rheume

Weaver Pelican Lake

Measure S from $\frac{1}{8}$ Post (13-14)

599.8 along Rd.

North $\frac{1}{4}$ on Sec Line 500.

1000

1126.5 to

hub. offset from tel. pole

West 10ft.

1274.9 to Pt in Rd. Fell 5.8

E. of $\frac{1}{4}$ Post $\frac{1}{2}$ Rd

Lunch

Begin M.C. on lake. run N.

set hub 89.5. offset E. 47.6"

(birch tree) set hub

T 1, N plus 89.5 =

6 ch 38.5 L set hub. offset

West 72 L set hub

8 ch 73.6 set hub. offset

24.4 E. Set hub in

Friday, January 13, 1939

13

13th Day—352 Days to Follow

random line. Cont N.

T-2-N

T-3-N

16 ch 23.3 Set hub. Fell

5 Links E of $\frac{1}{8}$ Post

End day

1562 center of road

runs N and S

1582 to post

738 $\frac{1}{10}$ to iron

59°36'

527 $\frac{3}{4}$ W

100 feet

L R 10° 528 $\frac{1}{4}$ W

L L 9.41 519 $\frac{1}{2}$ W

L R. 122 520 $\frac{3}{4}$ W

2745 528 $\frac{1}{4}$ W

L L 46 M S 28 $\frac{1}{2}$ W 39

14

Saturday, January 14, 1939
14th Day—351 Days to Follow

Back 100

100 offset 5' 5"

100 " " "

100 " 2 1/2"

Sunday, January 15, 1939 15

15th Day—350 Days to Follow

PAGES 15-17 BLANK!

18 Wednesday, ~~January 18, 1939~~

18th Day—347 Days to Follow

SPIRIT LAKE

- 2 CHAINS 1st HUB ANGLE 1.131
2 CHAINS 10th HUB N 20 1/4 E
2 CHAINS 2nd HUB R 15.32
6 CHAINS 3rd HUB N 37 E
2.55 CHAINS 4th HUB L 10.12
3 CHAINS 5th HUB N 27 E
1 CHAIN 6th HUB L 16.07
1.66 CHAINS 7th HUB N 12 1/4 E
2 CHAINS 8th HUB R 3.42
13 CHAINS 9th HUB N 5 1/2 E
6 CHAINS 10th HUB L 11.10
5.50 CHAINS 11th HUB N 3 3/4 E
4 CHAINS 12th HUB L 17.40
6.75 CHAINS 13th HUB N 12 1/2 W
7 CHAINS 14th HUB L 10.36
3 CHAINS 15th HUB N 23 1/2 W
3.90.6 CHAINS 16th HUB L 10.11
58 LINKS N 41 1/2 W

Feb 4, 1942
Thursday, January 19, 1939 19

19th Day—346 Days to Follow

SPIRIT LAKE

- 10 L 11.12 N 45 1/2 W
11 L 19.57 N 61 1/4 W
12 L 13.12 N 74 W
13 L 10.07 N 87 1/2 W
14 L 15.25 S 78 1/2 W
INCLUDED PG. 57 N 5 1/2 W

Feb. 5, 1942

- M.C. 4.195 TO 17.C. 195 01
2 CHAINS 1st HUB
3 CHAINS 2nd HUB
2.75 CHAINS 3rd HUB
2 CHAINS 4th HUB
3 CHAINS 5th HUB
1 CHAIN 6th HUB
2 CHAINS 7th HUB
1.60 CHAINS 8th HUB
2 CHAINS 9th HUB
1.40 CHAINS 10th HUB
1.90 CHAINS 11th HUB

20

Feb. 5, 1942
 Friday, January 20, 1939
 20th Day—345 Days to Follow

3 CHAINS 12TH HUB

4 CHAINS 13TH HUB

2.60 CHAINS 14TH HUB

4 CHAINS 15TH HUB

2 CHAINS 16TH HUB

AT 5 CHS 1.69 TO SHORE

AT 7 CHS 1.57 TO SHORE

10 CHAINS 17TH HUB

11 CHAINS 18TH HUB

8 CHAINS 19TH HUB

14.11 TO MC

3.90 TO SHORE TALLY 2

7.53 TO SHORE TALLY 3

Feb. 7, 1942
 Saturday, January 21, 1939
 21st Day—344 Days to Follow

21

MC 24.817 TO MC

40 LINKS FROM MC

4 CHAINS 1ST HUB

5 CHAINS 2ND HUB

1.60 CHAINS 3RD HUB

1 CHAIN 4TH HUB

1 CHAIN 5TH HUB

3 CHAINS 6TH HUB

2.50 CHAINS 7TH HUB

1.153 CHAIN TO MC LINE

55 LINKS TO MC

WEST END
 N 2° W 2.47 CHAINSEAST END
 N 40° E 12.43 CHAINS

3.71 FT RD TO RA

10.60 FT TO RD ^{SIG}

22

Sunday, January 22, 1939
22nd Day—343 Days to Follow

BLANK

23

Monday, January 23, 1939
23rd Day—342 Days to Follow

BLANK

24

Tuesday, January 24, 1939
24th Day—341 Days to Follow

BLANK

Handwritten notes, possibly describing a survey or measurement process. Includes the number 30.

37
37
14 25 FT

100
41 FT

1430 FT
32 FT

180 FT
33 FT

1550 FT

Wednesday, January 25, 1939 25
25th Day—340 Days to Follow

430 FT CROSS ADSIGN
EAST 22 FT FROM CENTER

229 FT SIDE RP

229 FT HAZELHURST LIMITS

33 FT ...

1500 FT ...

405 FT ...

375 FT ...

1015 FT ...

33 FT ...

" ...

INTERSECTION ...

375 FT ...

375 FT ...

25 FT ...

61 FT ...

200 FT ...

26

Thursday, January 26, 1939
26th Day—339 Days to Follow

Friday, January 27, 1939 27

27th Day—338 Days to Follow

40.23 - 40.23

20.11.5 - FOUND 320.48

E to W

N 3.10 CHAINS EXTER SWAMP

N 4.25 CHAINS LOWER SWAMP

21 CHAINS CENTER OF RD
FOLL

36.5 E 31.3 N TO CORNER POST

26.1 TAL 3

17.4 TAL 2

8.7 TAL 1

60.14 - 55.25

40.12.7 - 1.04.5

20.06.3 - 52.5

28

Saturday, January 28, 1939
28th Day—337 Days to Follow

4.57 CHAINS LOFT SWAMP

13.48 CHAINS NE SW LOGGING RD

21.30 CHAINS EW LOGGING RR

34 CHAINS ENTER SWAMP

35 CHAINS LEAVE SWAMP

MAR 15 1942 29
Sunday, January 29, 1939
29th Day—336 Days to Follow

W LINE FW SECTION LINE

5 CHAINS LEAVE SWAMP

6.55 CHAINS ENTER SWAMP

7.00 CHAINS LEAVE SWAMP

17 CHAINS ENTER SWAMP

20 CHAINS LEAVE SWAMP

26.74 CHAINS CENTER OF RD ^{NE-SW}

65.21 CHAINS CENTER OF RD ^{NE-SW}

86.25.4 CHAINS TO POST

FOLL 2.08.1 N OF POST .4

60.19 - 1.55.2-5

40.12.7 - 1.04.5

20.06.3 - 1.52.5

30

Monday, January 30, 1939
30th Day—335 Days to Follow

[Faint, mostly illegible handwritten notes on the left page]

Tuesday, January 31, 1939
31st Day—334 Days to Follow

31

691.4 center road
600 FT VILLAGE LIMITS SIGN
700 FT VISIBILITY LIMIT

1000 center road
1200 leave road
1324 center road
1780% set chucker
214
Road runs small off
217 to end of line
832 center of road

32

Wednesday, February 1, 1939
32nd Day—333 Days to Follow

Thursday, February 2, 1939 33
33rd Day—332 Days to Follow

900 ft center road

1388



10.00 center of road
on curve

1200 leave road

1324 center of road

17 80% set corner

214

Road runs SW and NE

817 1/10 end of line

837 center of road

34

Friday, February 3, 1939
34th Day—331 Days to Follow*Left outside*

1000 center of road
 1100 center of road
 1200 center of road
 1300 center of road
 1400 center of road
 1500 center of road

1600 center of road
 1700 center of road
 1800 center of road
 1900 center of road
 2000 center of road

Saturday, February 4, 1939
35th Day—330 Days to Follow

35

59.6 came east
138.8 road down acc*car into corner of
two roads**Steps 25 ft W. from side
of garage*256 ft N to old fence
post.

109.2 ft to hub

341 edge of swamp
also set hub

475 leave swamp

431 center of railroad
run E W526 fell 13 1/2 foot east
from

36

Sunday, February 5, 1939
36th Day—329 Days to Follow

8.07
2.20
8.81

Monday, February 6, 1939
37th Day—328 Days to Follow

37

2. 1367 came east
on road from sec
cor. inter section of
two roads.

Meas. 28 ft W. from side
of garudge

56 ft N to old fence
post. to hub

109.70 ft to hub

341 edge of swamp.

also set hub iron

425 leave swamp

431 center of railroad
runs E W 

526 fell 13 1/2 feet east
of iron ^{361 1/2}

38

Tuesday, February 7, 1939
38th Day—327 Days to FollowWednesday, February 8, 1939
39th Day—326 Days to Follow

39

2 $\frac{8}{10}$ W true line8 $\frac{5}{10}$ center of road8 $\frac{4}{10}$ center of road534 $\frac{4}{10}$ total.117 $\frac{3}{10}$ to wooden stake

169 to hub.

100 leave drive of RR

361 $\frac{4}{10}$ to hub.

417 center of R.R. tracks

488 total.

Felt 1 $\frac{1}{10}$ east of iron

Iron 41-42

True Line

$$\frac{3}{10} = 118 \frac{3}{10}$$

$$38 \frac{4}{10} = 169.$$

$$181 \frac{8}{10} = 361 \frac{4}{10}$$

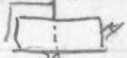
40

Thursday, February 9, 1939
40th Day—325 Days to Follow

90.6	90.6
<u>227</u>	<u>293</u>
317.6	383.6

Friday, February 10, 1939
41st Day—324 Days to Follow.

41

37 $\frac{7}{16}$ hub /
 90 $\frac{1}{16}$ to hub RR track
 3 of set east 8 $\frac{1}{16}$
 100 $\frac{1}{16}$ to house online
 House dimensions
 26 by 14 
 317 $\frac{1}{16}$ center of RR
 383 $\frac{1}{16}$ total
 2 $\frac{3}{16}$ west of iron
 iron number 38-39
 7.7 at 150
 59.4

42

Saturday, February 11, 1939
42nd Day—323 Days to Follow

Sunday, February 12, 1939 43
43rd Day—322 Days to Follow

Bundy

409.3

168 center of RR tracks

385 center of creek

394 $\frac{3}{10}$ total

iron 34-35

400 $\frac{4}{10}$ total

14A iron

44 Monday, February 13, 1939
44th Day—321 Days to Follow

BLANK

45 Tuesday, February 14, 1939
45th Day—320 Days to Follow

BLANK

91 railroad tracks
500, 5 1/2 ft. to side
of house
565 1/2 total
79 1/2 to hub: 34 ft
38 North then
set back in line
14 ft back into line
23 1/2 ft
11 1/2 East from
79 1/2 total
15 to center of 100

46

Wednesday, February 15, 1939
46th Day—319 Days to Follow

189.9

132 ~~XUAB~~256.8

578.7

47

Thursday, February 16, 1939
47th Day—318 Days to Follow

19ft off set hub

17.0 feet to post
set on lake.96 ft to post on
lake east line

91 railroad tracks

500, 5 $\frac{1}{10}$ ft to side
of house565 $\frac{1}{10}$ total179 $\frac{1}{10}$ to hub. $\frac{5}{16}$ center
of R.R.132 North then
set back in line
18ft back into line256 $\frac{3}{10}$ ftfell 1 $\frac{1}{10}$ East of iron

578.7 total

15 to center of R.R.

48

Friday, February 17, 1939
48th Day—317 Days to Follow

Saturday, February 18, 1939

49

49th Day—316 Days to Follow

319 $\frac{3}{10}$ ft to hub474 $\frac{4}{10}$ to hub593 $\frac{2}{10}$ total4'9" fell west
of iron 30'31"330 $\frac{7}{10}$

50

Sunday, February 19, 1939
50th Day—315 Days to Follow

Monday, February 20, 1939 51
51st Day—314 Days to Follow

1649 ^{to} ^{Washington's Birthday} to hub
by Lake 103 ^{to}
1772 to shore of Lake
East Shore 30 ^{to}
52 entered swamp
54 ~~left~~ 55
F 3 30 ⁷/₁₀

94 ^{to} ^{part}
from lake
190 ^{part} ^{from}
lake ^{part}
23 ^{part} ^{from}
by lake
955
144 ^{to} ^{another} ^{egg}
139 ^{total}
110 ^{part} ^{to} ^{road}
77 ^{to} ^{entrance}

52

Tuesday, February 21, 1939
52nd Day—313 Days to Follow

Wednesday, February 22, 1939 53
53rd Day—312 Days to Follow

Washington's Birthday

103 $\frac{4}{10}$ 103 $\frac{4}{10}$

50

50

30 $\frac{3}{10}$ 30 $\frac{3}{10}$

50

122 $\frac{4}{10}$ 122 $\frac{4}{10}$

306 3

9 ft to post
from lake

190 feet from
lake.

23 ft to hub
by lake

155

141 to water edge

139 total.

110 feet to road

97 to lake shore

54 Thursday, February 23, 1939
54th Day—311 Days to Follow

Washington's Birthday

[Faint handwritten notes, possibly bleed-through from the reverse side]

55 Friday, February 24, 1939
55th Day—310 Days to Follow

774 from lake
to center of highway
17
2025 $\frac{1}{2}$ E on road
from $\frac{1}{4}$ car.
3' 10" $\frac{1}{2}$
8' 89" center of black
top Highway 17
176 to lake

56

Saturday, February 25, 1939

56th Day—309 Days to Follow

Sunday, February 26, 1939

57th Day—308 Days to Follow

57

456 to post

67 to lake

279 set sth.

~~50 to lake~~

traverse

34

53

60

171 to lake

1236

27

Calatopsium 60-45

Harris 32-32

28 9/10

10

58

Monday, February 27, 1939

58th Day—307 Days to Follow

[Faint handwritten notes, possibly describing measurements or calculations.]

Tuesday, February 28, 1939 59

59th Day—306 Days to Follow

13 chains leave
road
1473 $\frac{1}{2}$ fence \nearrow
2385 $\frac{4}{10}$
764 $\frac{1}{2}$ ft. to fence
post.
5 chains 160 Nts
old fence on sec.
line
7236 $\frac{7}{10}$ total to fence
28 links wide

Patato Pen 60-45
House 32-32
28 $\frac{9}{10}$ across lot

60

Wednesday, March 1, 1939

60th Day—305 Days to Follow

Thursday, March 2, 1939

61st Day—304 Days to Follow

61

650 to center of road
 772 center of gutter
 of a and 17
 775 center of bridge
 754 center of a and 7

62

Friday, March 3, 1939
62nd Day—303 Days to Follow

63

Saturday, March 4, 1939
63rd Day—302 Days to Follow

Pages 62 to 64 BLANK!

64

Sunday, March 5, 1939
64th Day—301 Days to Follow

PAGES 25 TO 26 BLANK!

Monday, March 6, 1939
65th Day—300 Days to Follow

65

50 to hub on tri.

109.5

620.5 to hub on lake

640 to lake shore

150 W on tree

40 offset to mine tree
from lake

217.2

75.2
10

129.8 to hub on
North side of road

168 to hub in the
center of the road

208 to hub on south
side of road

337 to stake on lake
shore

1672 5/6

66

Tuesday, March 7, 1939
66th Day—299 Days to Follow

July 20
Wednesday, March 8, 1939
67th Day—298 Days to Follow

67

Start $\frac{1}{8}$ post run south
Hub 3 chains Δ
3 " 66 links Bend stake
East (Base) 1 chain 50 links set Hub on "

79° 4 min 168° 11 min

79° 3 min 158° 4 min

79° 2 min 158° 4 min

10 chains 74 links ^{from 1/8 post} across lake

17.56 c/l Road SE NW

10.6
5.6
5
16.72
20 chains set temp $\frac{1}{8}$ post
Runs west
5 chains 61.8 set hub
c/l Road NE SW

68

Thursday, March 9, 1939

68th Day—297 Days to Follow

19.38 $\frac{1}{2}$ Block Top Road N-S20.00 Set Hut - Gun North20.16.4 Fill 03.3 Links ^{new} W of corner

69

Friday, March 10, 1939

69th Day—296 Days to Follow

Start $\frac{1}{8}$ post - run SouthHubs 3 chains Δ

3 chains 66 links lake

East (Base) 1 chain 50 links - set
Hubs on lake

10 chains 74 links across lake

13 ch X

5 ch E

4 ch E

6 ch E

70

Saturday, March 11, 1939
70th Day—295 Days to Follow

71

Sunday, March 12, 1939
71st Day—294 Days to Follow

T₁ 5 chains N 8 m
2.71 W E 1 T

T₂ 5 chains N F 500 NE 50
48 L W E E

1 ch N 35° 6' to 11 E

67 L W E 3

1 ch N to center of 17

1 ch N 5

13 ch N 2 8° 28

5 15.1A

5 ch. E retro

4 ch. E

6 ch E

72

Monday, March 13, 1939

72nd Day—293 Days to Follow

From 8th North

T 1 W 17.5

2 W 18.5

3 W 18.5

4 W 18.5

5 W 15.0

6 W 18.5

7 W 18.5

8 W 18.5

41.71 to
center of road

E 18.5

E 18.5

73

Tuesday, March 14, 1939

73rd Day—292 Days to Follow

From

T 1 E

5.56 to Fence NE-SW

2 E

12.35 6" to 611 E

3 E

.075 to center of #17

4 E

21.22 8" to

74

Wednesday, March 15, 1939
74th Day—291 Days to Follow

Thursday, March 16, 1939
75th Day—290 Days to Follow

75

~~Iron by Lake~~

~~V.P. 12 N. 76 W. 3.3'~~

~~V.P. 10 N. 27 E. 16~~

~~To reference stake E 138'~~

~~6' offset from Iron by Lake~~

~~138' S to iron pipe~~

→ ~~93.7' E to iron pipe by road~~

→ ~~21.2' W to iron pipe by lake~~

~~52' S to stake~~

~~64' E to road~~

~~123.26' W to Lake~~

~~50' S to stake~~

~~44' E to road~~

~~91.6' W to Lake~~

~~10' S set stake~~

~~20' S set stake - County line~~

~~E set stake by road~~

~~W set stake by lake~~

76

Friday, March 17, 1939
76th Day—289 Days to Follow

July 14, 1951
Saturday, March 18, 1939 77
77th Day—288 Days to Follow
59 miles RT - Judd's

Iron by Post Lake

Y.P. 12N. 76 W. 33'

Y.P. 10N 27E. 16 T

E 138' to iron set by road

Offset 6' W from Iron by Lake

138' S set iron

93.7' E set iron by road

71.2' W set iron by Lake

52' S set stake

64' E set stake by road

123.25' set stake by Lake

50' S set stake

44' E set stake by road

91.6 W set stake by Lake

50' S set stake

50' S set stake - County Line

E set stake by road

W set stake by Lake

78

July 15, 1961
 Sunday, ~~March 19, 1939~~
 78th Day—287 Days to Follow

From MG by Lake

T 1 E set hub-offset 4' S

T 2 E

347' to $\frac{1}{4}$ corner E

240' N set hub

100' N

5' 6" off

Monday, March 20, 1939
 79th Day—286 Days to Follow

79

80

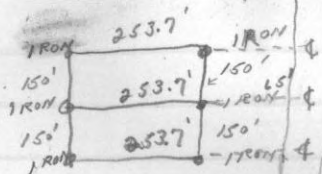
Tuesday, March 21, 1939
80th Day—285 Days to Follow

From MC by Lake
T 1 E set hub - offset 4' S
T 2 E
347' to 1/4 corner
240' N set hub
100' N
5' 6" off

Joe Zembryuski - Wolkowski
Wednesday, March 22, 1939

81st Day—284 Days to Follow
HIGHWAY 17

81



Thursday, March 23, 1939
82nd Day—283 Days to Follow

Friday, March 24, 1939
83rd Day—282 Days to Follow

Page,
Thursday, March 23, 1939
TO END BLANK, WITH THE
EXCEPTION OF NOTATIONS.

Monday, December 4, 1939

338th Day—27 Days to Follow

~~91~~
~~24~~
~~8~~
22

Tuesday, December 5, 1939

339th Day—26 Days to Follow

Number of parking
spaces — 9 74'

Angle of parking
spaces — 70°

Tuesday, December 26, 1939

360th Day—5 Days to Follow

Christmas Day

Wednesday, December 27, 1939

361st Day—4 Days to Follow

2 Bread

2 Beans

Butter

Lard

salt

pepper

matches

apples

flour

eggs

Bacon

sugar

can milk

coffee

Telephone Numbers

Addresses

	Received	Paid
Mileage	62	
On hand January 1	66	
January	65	
February	64	
March	64	
April	64	
May	65	
June	64	
July		
August		
September		
October		
November		
December		
TOTAL		
Balance to new Account		

532' & RD

499' + 66'

553' $\frac{7}{8}$ LINE

[Faint, mirrored handwriting, likely bleed-through from the reverse side of the page]

40
70
140
695
209.8

123500
122185
1315

12350
12218
132

20.25
1.00
20810.00
16050.00
476.02
4015.34
14496.00
20.25
3772.50

Royce
Maine

3545.7
4.6
3550.3

2381.7
114
3996.2

100
50 3/10
497

110
145
255