

MAINE
1944

DIARY

LEGAL HOLIDAYS IN THE VARIOUS STATES

JANUARY 1, NEW YEAR'S DAY: In all the States, Territories and Colonial Possessions.

JANUARY 19, LEE'S BIRTHDAY: In Ala., Ark., Fla., Ga., Miss., N. C., S. C., Tenn. and Va.

FEBRUARY 12, LINCOLN'S BIRTHDAY: In Alaska, Calif., Colo., Conn., Del., Ia., Ill., Ind., Kan., Ky., Mich., Minn., Mo., Mont., Neb., Nev., N. J., N. Y., N. Dak., Ohio, Pa., S. Dak., Tenn., Utah, Wash., W. Va., Wyo., and observed by Governor's Proclamation in Mass.

FEBRUARY 22, WASHINGTON'S BIRTHDAY: In all the States, Territories and Possessions.

GOOD FRIDAY: In Conn., Del., Fla., La., Md., Minn., N. J., Pa., Philippines, Porto Rico, Tenn.

APRIL 19, PATRIOT'S DAY: In Me. and Mass.

APRIL 26, CONFEDERATE MEMORIAL DAY: In Alabama, Florida, Georgia and Mississippi.

MAY 10, CONFEDERATE MEMORIAL DAY: In Kentucky and North Carolina.

MAY 30, DECORATION DAY: In all the States and Possessions except Ala., Ark., Fla., Ga., La., Miss., N. Mex., N. C., S. C., Tenn., and Texas.

JUNE 3, JEFFERSON DAVIS'S BIRTHDAY: In Ala., Ark., Fla., Ga., Ky., La., Miss., Tenn., Tex. and Va.

JUNE 14, FLAG DAY: Is widely observed but not a legal holiday.

JULY 4, INDEPENDENCE DAY: In all the States, Territories and Possessions.

SEPTEMBER (First Monday), LABOR DAY: In all the States and Territories except Ala., Wyo., and the Philippines.

OCTOBER 12, COLUMBUS DAY: In Ark., Ariz., Calif., Colo., Conn., Del., Fla., Idaho, Ill., Ind., Kan., Ky., La., Me., Md., Mass., Mich., Mo., Mont., Neb., Nev., N. H., N. J., N. M., N. Y., N. Dak., Ohio, Ore., Pa., R. I., Tex., Utah, Vt., Wash., W. V., also in Porto Rico. In Arkansas and Kansas it does not affect notes or judicial proceedings.

NOVEMBER, GENERAL ELECTION DAY: 1st Tuesday after 1st Monday. In every State and Territory except Alaska, Dist. of Col., Hawaii, Ill., Mass., Miss., Ohio, Philippines and Vt. In Illinois it is a legal holiday in Chicago, Springfield, East St. Louis, Galesburg, Danville, Cairo and Rockford. In Ohio it is a half holiday. In Maine it is a legal holiday only as to the courts, which also close on the State Election Day (biennially 2nd Monday in Sept.).

NOV 11, ARMISTICE DAY: In Ala., Ariz., Ark., Calif., Colo., Fla., Ill., Iowa, La., Mass., Minn., Mo., Mont., Neb., N. J., N. C., N. Dak., Pa., R., I. S. Dak., Tenn., Tex., Vt., Va., and Hawaii. In other States by Governor's Proclamation only.

NOVEMBER, THANKSGIVING DAY: Last Thursday in November. It is observed in all the States, although in some it is not a statutory holiday.

DECEMBER 25, CHRISTMAS DAY: In all the States, Territories and Possessions.

Saturday, ^{June 7th} January 1, 1944

1st Day—365 Days to Follow

New Year's Day

Alburough Shores (Parcel)

Lot 17 to 34 inclusive.

Course of $\frac{1}{2}$ of platted Lot

"34" S. $23\frac{1}{4}^{\circ}$ W. Dist. 321.1'

Thence included Δ $28^{\circ}57'$

N. $57^{\circ}45'$ W. - 100'

R. $12^{\circ}49'$ N. $44\frac{1}{2}'$ W. - 100'

R. $-1^{\circ}52'$ N. $42\frac{1}{2}'$ W. - 100

L. $-1^{\circ}05'$ N. $43\frac{1}{2}'$ W. - 100'

Sunday, January 2, 1944

2nd Day—364 Days to Follow

R. $15\frac{1}{2}^{\circ}$ N $31'$ W. $120'$ to

to N.E. Cor Platted Lot 17

N. Platted Lot 17 $161\frac{1}{2}'$ to Lot

L. 27° W. $561'$ W. $1226'$ to Lot

33 M. 165

June 8th 33

2

June 9th
Monday, January 3, 1944

3rd Day—363 Days to Follow

Continued

N. of Platted Lot 17
S. 72 1/2 W. 200' to I.P. on bank
of road
Included Δ 119°-03' S. 42 1/2 E
along 495 to E of Lot
34 I.P.

Tuesday, January 4, 1944

4th Day—362 Days to Follow

3

Sept 13.

Kesselman

N.W. Platted Lots 24 & N.E.
Lot 25 Iron Pips agreed,

"BIT"

Triple crotched Elm.

586 E. 4

Elm 8 S. 53 W. 27'

Dist. 232' from I.P. at
Lake to I.P. at Rd. Sideline
will be cement Mark

4 Wednesday, January 5, 1944

5th Day—361 Days to Follow

1
890.57'

5 Thursday, January 6, 1944

6th Day—360 Days to Follow

92°43"

Sunday, January 9, 1944

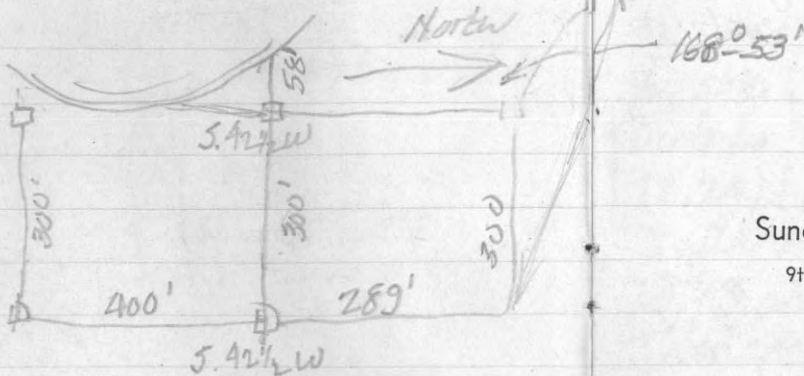
7th Day—357 Days to Follow

6

Sat July 14th 1945
Friday, January 7, 1944

7th Day—359 Days to Follow

Lots 1 & 2 Soc³⁶ 38-9
 F.O. Muller, (Lot 2)
 Course S. 42 $\frac{1}{2}$ ° W, Shore
 400' along shore
 R.A. to shore line 300'

7
Saturday, January 8, 1944

8th Day—358 Days to Follow

E 1/8 P. on Soc Line Lot
 Soc 26 & 35

Sunday, January 9, 1944

9th Day—357 Days to Follow

8

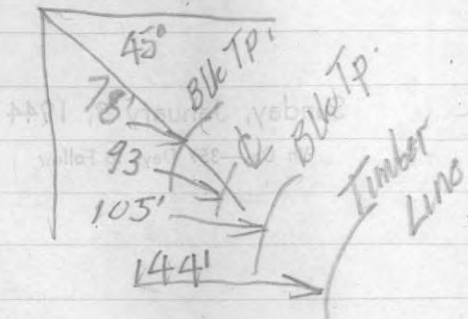
Monday, January 10, 1944

10th Day—356 Days to Follow

 $\Delta 59^{\circ} 50'$

300' West from inter
section of cbr Lines
1st picture and also
beginning of curve

300' South to beginning
of curve & 2nd picture



Bank about 5' high

Straight away black top 21'
wide

Oct 23rd 1945
Tuesday, January 11, 1944 9

11th Day—355 Days to Follow

Sec 6, 38-6,

Set $\frac{1}{8}$ on $\frac{1}{8}$ from Ray
Halls notes on record,
in County Clerks Office,
Chained west on South
side of Town Road on
 $\frac{1}{8}$ Line 20.20' & set
 $\frac{1}{8}$ blk. R.A. South
Dist to Tr Road on West
12.24 to ϕ of same
South on 90° Var $1\frac{1}{4}^{\circ}$ E
19.58 and set $\frac{1}{8}$ blk
Trance R.A. West
11.78 to ϕ Tr Road
.46

Sept 12 about 3:00 P.M.

10. Wednesday, January 12, 1944
12th Day—354 Days to Follow

81 lbs 164

Thursday, January 13, 1944 //
13th Day—353 Days to Follow

St. Mary Hospital
179.4 from fence to North
end of hospital.

Width of building $46\frac{1}{10}$
Length of bldg. 254.8'

255
<u>46</u>
1530
1020
<u>11730</u>

Sunday, January 16, 1944

16th Day—350 Days to Follow

12

Friday, January 14, 1944

14th Day—352 Days to Follow

Saturday, January 15, 1944

15th Day—351 Days to Follow

13

PAGES 12 and 13 BLANK!

Sunday, January 16, 1944

16th Day—350 Days to Follow

14

Monday, January 17, 1944

17th Day—349 Days to Follow

PAGES 19 AND 18 BLANK!

Sunday, January 16, 1944

16th Day—350 Days to Follow



Tuesday, January 18, 1944

15

18th Day—348 Days to Follow

159' to bank for rd

400'

49.3 to 8th

100

200

300

400

500

600

672

700

800

878 - line

897 - to center of road

220 SW

100 SE

500 SSE

Wednesday, January 19, 1944

19th Day—347 Days to Follow

Thursday, January 20, 1944

20th Day—346 Days to Follow

Page,
Wednesday, January 19, 1944
TO END. BLANK WITH
THE EXCEPTION OF NOTATIONS.

Sunday, January 23, 1944

23rd Day—343 Days to Follow

Lot 8 - Blk 8

Pelican Add.

" Lot 12

Lot 9 & 10

} Pasol

Lot 9 Blk 6

Pelican Add

Lot 10 - 11 Blk 6

21.22

2.30

66

1380

1380

15180

Memoranda

Fred Vanbensch & Lillman

Vanbensch. The N.E. fract
 1/4 Sec 3, 39-8 E.
 544 1/2 ft (Point of beginning
 from Sec. Cor commen-
 ed 2, 3, 34 & 35. 400'
 on Highway 70 west
 and south to south line
 of the N.E. fract, 1/4.

CALENDAR 1914

CALENDAR 1914											
JANUARY						FEBRUARY					
Day	Mon	Tue	Wed	Thu	Fri	Day	Mon	Tue	Wed	Thu	Fri
1	2	3	4	5	6	1	2	3	4	5	6
7	8	9	10	11	12	7	8	9	10	11	12
13	14	15	16	17	18	13	14	15	16	17	18
19	20	21	22	23	24	19	20	21	22	23	24
25	26	27	28	29	30	25	26	27	28	29	30
31						31					
MARCH						APRIL					
Day	Mon	Tue	Wed	Thu	Fri	Day	Mon	Tue	Wed	Thu	Fri
1	2	3	4	5	6	1	2	3	4	5	6
7	8	9	10	11	12	7	8	9	10	11	12
13	14	15	16	17	18	13	14	15	16	17	18
19	20	21	22	23	24	19	20	21	22	23	24
25	26	27	28	29	30	25	26	27	28	29	30
31						31					
MAY						JUNE					
Day	Mon	Tue	Wed	Thu	Fri	Day	Mon	Tue	Wed	Thu	Fri
1	2	3	4	5	6	1	2	3	4	5	6
7	8	9	10	11	12	7	8	9	10	11	12
13	14	15	16	17	18	13	14	15	16	17	18
19	20	21	22	23	24	19	20	21	22	23	24
25	26	27	28	29	30	25	26	27	28	29	30
31						31					
JULY						AUGUST					
Day	Mon	Tue	Wed	Thu	Fri	Day	Mon	Tue	Wed	Thu	Fri
1	2	3	4	5	6	1	2	3	4	5	6
7	8	9	10	11	12	7	8	9	10	11	12
13	14	15	16	17	18	13	14	15	16	17	18
19	20	21	22	23	24	19	20	21	22	23	24
25	26	27	28	29	30	25	26	27	28	29	30
31						31					
SEPTEMBER						OCTOBER					
Day	Mon	Tue	Wed	Thu	Fri	Day	Mon	Tue	Wed	Thu	Fri
1	2	3	4	5	6	1	2	3	4	5	6
7	8	9	10	11	12	7	8	9	10	11	12
13	14	15	16	17	18	13	14	15	16	17	18
19	20	21	22	23	24	19	20	21	22	23	24
25	26	27	28	29	30	25	26	27	28	29	30
31						31					
NOVEMBER						DECEMBER					
Day	Mon	Tue	Wed	Thu	Fri	Day	Mon	Tue	Wed	Thu	Fri
1	2	3	4	5	6	1	2	3	4	5	6
7	8	9	10	11	12	7	8	9	10	11	12
13	14	15	16	17	18	13	14	15	16	17	18
19	20	21	22	23	24	19	20	21	22	23	24
25	26	27	28	29	30	25	26	27	28	29	30
31						31					