

M
A
I
N
E
1
9
4
6
B

1946B

180 56

90

172° 56'

8000

5986

2014 P. 06674

25.64P

2.26

512P360

512P36

56411940

32 31.

7.64

39 95

56412

34814

91.226

7.64732

17960

17056

7° 04'

2014

15.0

3514

552P

1.11

8.06674

444

777

666

666

888

8.9540814

1792

16377

90

5333

7° 27'

Saturday, January 1, 1938

1st Day—364 Days to Follow

New Year's Day

APR. 18, 1946

RUN SOUTH FROM SEC COR.

0° SET TALLY 2

SWAMP EDGE 9 CH 52 LINKS

EDGE OF LAKE 1.4 CH 30 LINKS

TO HUB FOR TRIAN. 13 CH 70.8

BASE LINE
RT. ANGLE TO HUB 1 CH 11 LINKS

1st 82° 55' and 165° 52'

3rd 82° 56' 4 CH 24 165° 52'

CO. TANGENT 8.06674 X 1.11 =

8 CH. 95.4 CROSS LAKE

13 70.8 22 CH 66.24

P. 95.4

21 166 2

SET TALLY 5

SET TALLY 6

SET TALLY 7

TOTAL 39 CH. 11.2 LINKS

2

Sunday, January 2, 1938

2nd Day—363 Days to Follow

APR 13, 1946

NORTH LINE SET 20.36-8

97 LINKS EAST TO LAKESHIRE

1 CH 60 LINKS RT MVB

ANGLE 92° 24' COURSE 55° 30' E

FENCE COURSE VAR 310° E

THENCE ANGLE RT 30° 17'

COURSE S 30° 1/2 W

1 CH LENGTH

1 CH 18.8 LENGTH

ANGLE RT 85° N 84° 1/2 W

ANGLE LFT 33° 49'

COURSE 563° W

LENGTH 6 CH 13.4 LKS

THENCE INCLUDED ANGLE

65° 26' N 2 1/4 W

4 CH 71.7 LKS FENCE

6 CH 22.3 LKS TO MC

Monday, January 3, 1938

3rd Day—362 Days to Follow

3

APR 16, 1946

FROM IRON 351.3 FT TO FENCE

ANGLE 92° 54' THENCE

NORTHELY 87° 05'

180 FT 61.2 TO IRON

92° 32' 60 FT 0.40 IRON

93° 180 FT SET IRON

ANGLE S 70° E 4 UR BARS

SOUTH LINE 86° 32'

SET IRON 180 FT

SET IRON 240 FT @ 86° 32'

SET BACK IRON 120 FT MVB

COR 15 FT FROM FENCE @ 86° 32'

SET 50 LK IRON 170 FT BACK

4

Tuesday, January 4, 1938

4th Day—361 Days to Follow

COURSE OF LINE

S 245° E ANGLE 90°

Wednesday, January 5, 1938 5

5th Day—360 Days to Follow

17 APR 1946

32 CH 31 LKS ^{TRING} HUB AND
LAKE SHORE ^{290°} 1 CH TORT WASHING

1st ANGLE 82° 32'

2nd ANGLE 165° 05'

3rd ANGLE 87° 33'

4th ANGLE 165° 06'

TRIANGLE 7 CH 64 LKS

APR 19, 1946
44 CHS 24 LKS CENTER RD
77 CHS 49 LK OLD SECT COR

FELL 22.3 LKS W

15.9 LKS E 57.06 LK

1/8 STR.

1/8 STR 16.20 CH. 4.5 LKS E

BTS N.P. 547E .538

N.P. N16E .087

SET MC 11 LKS E

6. Thursday, January 6, 1938
6th Day—359 Days to Follow

16 CHS APR 22, 1946
ENTER SWAMP 32 CH 8 LKS WARESH

OFFSET 1 CH W.

36 CH 8 LKS

1 CH 20.5 LKS E TO

OLD POST

APR 23 SET 1/8 20.58 CH
11.2^{LKS} E

23.60

.0058

11800

11804

~~11800~~

GO E 7 CHS LEAVE FIELD

W 21 CHS 50 LKS TO LINE

POST

N 23 CHS 60 LKS TO LINE

E 18 CHS 80 LKS TO LINE

S 18 CHS 60 LKS TO LINE

3.5 LKS E

Friday, January 7, 1938

7th Day—358 Days to Follow

LOT 12
SEETH
HIGH VIEW

APR 23, 1946

FRONT 60' BACK 70'

SIDE 216.5'

8

Saturday, January 8, 1938

8th Day—357 Days to Follow

APR 26, 1946

8° 50' COURSE

40 ^{CHS} 53 LKS TO CENTER

9 CHS 25 LKS CENTER OF RD

41 CHS 27 LKS CENTER OF RD

42 CHS OLD FENCE

FELL 88 LKS S.

18 LKS W FROM FENCE

TO CENTER OF RD

FOUND 1/2 FELL 47 LKS S.

FELL 22 1/2 LKS SW 1/4

APR 29

SET TALLY 8-83.6 LKS N

41.87 CENTER OF RD

83 chains, 38 1/2 links to fence
 Fell 6 links N of
 1/4 corner, squared
 stone in fence

9
Sunday, January 9, 1938

9th Day—356 Days to Follow

PIT LKS RD EAGLE

COURSE 553 3/4 E

860 FT TO W POST 354 FT

100 FT WIDE

200 FT DEEP

10 Monday, January 10, 1938

10th Day—355 Days to Follow

WEAVER 2 MAY 76

AT MC VAR LIVE E $S\frac{1}{2}$

INCLUDED ANGLE 105°

COURSE $S 9\frac{1}{2} W 201 FT$

ANGLE RT $17^{\circ} 48'$

COURSE $S 29\frac{1}{2} W 211 FT$

ANGLE LEFT $0^{\circ} 21'$

COURSE $S 29.10 W 200 FT$

ANGLE LEFT 4°

COURSE $S 24^{\circ} 50' W 111 FT$

ANGLE 90° 271 FT TO RD

254.5 FT DEEP

COURSE $S 75 E$

145 FT ^{including} ANGLE $112^{\circ} 20'$

COURSE $N 40 E E$

ANGLE LEFT $30 2'$

COURSE $N 55\frac{1}{4} E$

200 FT

ANGLE LEFT $24^{\circ} 15'$

COURSE $N 30 20' E 145 FT$

417 FT TO FENCE

Tuesday, January 11, 1938 11

11th Day—354 Days to Follow

ANGLE LEFT $15^{\circ} 13'$

COURSE $N 5 E 100 FT$

ANGLE RIGHT $9^{\circ} 14'$

COURSE $N 14 E 100 FT$

221 FT TO FENCE

ANGLE RIGHT $18\frac{1}{2}^{\circ}$

COURSE $N 33 E$

INCLUDED ANGLE $53^{\circ} 37'$

COURSE VAR $4^{\circ} E$

400 FT 45 MILES

$20 23 W 3 30 20 21$

10.4 E ^{FT} 100 FT POST

12.2 E 100 FT POST

12.3 E 3rd 100 FT POST

13.1 E 4th 100 FT POST

10.6 E 5th 100 FT POST

8.1 E 6th 100 FT POST

12.7 E 7th 100 FT POST

12 - Wednesday, January 12, 1938
12th Day—353 Days to Follow

CHANGED BACK OF LOT 3

TO 160 FT LOT 4 TO 100 FT

COURSE N $76\frac{3}{4}$ ° W

299.4 FT

COURSE N $76^{\circ}40'$ W

293.8 FT

COURSE N 66° W

336.6 FT

COURSE N $66\frac{1}{2}$ ° W

346 FT

COURSE N 69° W

326.2 FT

COURSE N 70° W

300 FT

13
Thursday, January 13, 1938

13th Day—352 Days to Follow

KLEMP MAYS

TA MARK 8" 563 EG LIE

SHOULD BE N 63° E

TA MARK 8" 567 WIZARD

SHOULD BE WHITE PINE

WHITE PINE 7" N 82° W

15.5 LKS

WHITE PINE 10" S 53° E

19.5 LKS

ANGLE FROM S TO W

117° COURSE N $63\frac{1}{2}$ ° W

300 FT TRENCH ANGLE

FROM E TO N 117° 200 FT

90 FT TO TRAVERSE HUB

△ 90° 100 FT HUB TO LAKE

25 FT 115 FT BACK

△ 90° FROM 200 FT BACK STR

W 400 FT

△ 90° 33.5 FT TO OFFSHO

HUB △ 90° 100 FT
FOR 500 FT

14 Friday, January 14, 1938

14th Day—351 Days to Follow

RUNS MAY 7, 1946

2 CHS 8 LKS CENTER RD
19 CHS 71.4 LKS HUB
19 CHS 92 LKS LAKE SWAMP

WHITE PINE 9" S 32 W 4 1/4

WHITE PINE 30" S 7 E

FELL 1 CH 13 LKS E

19 CHS 70.1 LKS MC

BT WHITE PINE 24" S 87 W 30 LKS

B WHITE PINE 10" N 45 E 13 1/2

N.T. .0577 = 3° 18'

CORNER 93° 18' VAR 3° 42' E

RUN 5 FROM 1/2 COR

PUT 37 LKS SWAMP

8 MAY 17 CH LEAVE SWAMP 48 M¹²

24 CH ENTER SWAMP

28 CH 26 LKS CENTER OF RD

33 CH 17 LKS MC

BT W.P. 28" N 27 W 6 LKS

15 Saturday, January 15, 1938

15th Day—350 Days to Follow

9 MAY 46

SET POST RUNS 3 CHS 45 LKS

HUB 2 CH BASE LINE

1ST ANGLE 94 1/2

2nd ANGLE 189° 56'

3rd ANGLE 94° 56'

4TH ANGLE 189° 56'

1ST ANGLE 79° 49'

2nd ANGLE 163° 25'

3rd ANGLE 80° 10'

4TH ANGLE 160° 22'

5TH ANGLE 80° 12'

6TH ANGLE 160° 24'

5.78938

345

1157

2

1157876

15.028 MC

10 MAY

68 CHS ENTER SWAMP

73 CHS 37 LKS LEAVE SWAMP

99 CHS 74 LKS TO RD

16 Sunday, January 16, 1938
16th Day—349 Days to Follow

788.9 99 24
363.1 56

1152 99 48 LKS

MAX. 1/4 SET COR. 5 LKS N

BT. N.P. 11 5 20 E SET COR. 90 LKS S

NP 14 N 20 W 41.9 LKS

FELT WICH. 27.6 LKS 56 LKS

99 CH 17 LKS SET COR. 2043

NAT TAN. .0169 58'
445

5043' E

SET SEC COR 10-11-14-15 AT

20.15.8 - 34 LKS E

LINE BETWEEN SEC 14-15

79 CHS 02.2 LKS

SET 1/4 POST 39 913-173 H 40 E

SET 1/4 POST 59 687-1. CH E

SET 1/4 POST 79 423-1.34 E

17 Monday, January 17, 1938
17th Day—348 Days to Follow

BT X
MAPLE 5" S 86 W 14.1 LKS

MAPLE 5" N 6 W 42.4 LKS

BT 5/8
N.P. 8' S 74 E 44.4 LKS

BT 1/8
NP 24" S 10 W 31 LKS

WP. 24" N 56 W 57 LKS

BT 2/4
OAK 8" S 80 E 61.4 LKS

OAK 7" N 37 W 72.4 LKS

54 MILES 10 MAY 74 MILES 11 MAY

15.8

18 Tuesday, January 18, 1938

18th Day—347 Days to Follow

MAY 13

^{MC}
BTS W 10 20 S 42E 26.3 LKS

WP 12 S 25 W 60.3 LKS

4 CHS CENTER OF RD

69 CHS 96 LKS INTS BOT NS ROAD

2 CHS 36.7 LKS TOTAL 5 CHS NS ROAD

$\frac{1}{4}$ 2 ^{CHS} 18.1 LKS 2.04 LKS N

$\frac{1}{9}$ 45 ^{CHS} 93.7 LKS 3.887 LKS N

46 MILES

MAY 14

RUN E

28 CHS CENTER OF RD

36 CHS 05 LKS TO CREEK

36 CHS 36 LKS OTHER SHORE

47 MILES

19
Wednesday, January 19, 1938

19th Day—346 Days to Follow

MAY 16

44 CHS CREEK BOTTOM

50 CHS 18 LKS CREEK SHORE

50 CHS 41 LKS CREEK SHORE

51 CHS LEAVE CREEK BOTTOM

66 CHS 93 LKS CREEK

67 CHS 17 LKS CREEK

80 CHS 55.8 LKS SECT COR

SET SECT COR PASSY

SET $\frac{1}{8}$ 60.34.3

SET $\frac{1}{4}$ 40.22.9

SET $\frac{1}{8}$ 20.11.4

46 MILES

20 Thursday, January 20, 1938
20th Day—345 Days to Follow

MAY 17.

RUN'S FROM 1/4 CREEK

11 CHS 79 LKS CENTER OF RD

15 CHS 27 LKS OFFSET HVB

20th BASE LINE 16 CHS 29 LKS 1+VB
TRAIL

1st Δ 88° 19'

2nd Δ 166° 39'

3rd Δ 83° 20'

4th Δ 166° 40'

17.111 CHS ACROSS LAKE

33.401

35 CHS 71 LKS CENTER OF RD

46 CHS 73 LKS CENTER OF RD

65 CHS ENTER SWAMP

73 CHS 41 LKS ENTER

CREEK

73 CHS 60 LKS LEAVE

CREEK

21
Friday, January 21, 1938
21st Day—344 Days to Follow

MAY 17

75 CHS LEAVE SWAMP

78 CHS 20 LKS INTERSECT

EAST & WEST SECTION

LINE FALL 1 CH 17.6 LKS E

22 Saturday, January 22, 1938
22nd Day—343 Days to Follow

MAY 21 RUNN FROM SET CON

19 CHS 97 LK CREEK

19 CHS 90 LKS CRANE

20 CHS CREEK

20 CHS 22 LKS "

21 CHS 72 LKS "

26 CHS LEAN "

35 CHS 36 LKS LAKE

2 CHS 20 LKS BASE LINE

1st 87° 46' 5th 87° 46'

2nd 175° 32' 6th 175° 32'

3rd 87° 45'

4th 175° 30'

34 CHS 81.4 HAS HUB

Δ 2° 14' 25.6418

SET S ECT CENTER 3411588 W

SET M C 58.8 W 3390.1

SET M 58.675 88 W

25.6418 23 Sunday, January 23, 1938
23rd Day—342 Days to Follow

SET MC NP 12" 54SE 15W
17.1 LKM
NP 10' N 30W 2.54
49 MILES

24

Monday, January 24, 1938

24th Day—341 Days to Follow

MAY 22

IRON W FROM SEAT CENTER

4 CHS 9.9 LKS HUB

1 CH BASE LINE

1st $81^{\circ} 43'$ 3rd $81^{\circ} 44'$ 2nd $163^{\circ} 27'$ 4th $163^{\circ} 27'$

6.12339 = 10.222 CHS

41 CHS 74.3 LKS

FELLS 42 LKS

SET $\frac{1}{8}$ 20.871 - N 2 LKS

SET MC 10.2 LKS N

RUN E FROM SEAT COR

15 CHS CENTER OF RD

16 CHS BANK OF RD

21 CHS 51 LKS 2 LKS N
FISHERS VP

23 CHS 59 LKS CENTER OF RD

38 CHS 24.4 LK MC

46 MILES

25

Tuesday, January 25, 1938

25th Day—340 Days to Follow

MAY 25

RUN E FROM $\frac{1}{8}$ PAST

23 CHS M.C. 2 CH 20 LKS BASE

1st $86^{\circ} 20'$ 3rd $86^{\circ} 20'$ 2nd $172^{\circ} 40'$ 4th $172^{\circ} 40'$

34.33 CHS TRIANG.

57.33 CHS M.C.

59 CHS RD

65 CHS 35 LKS RD

69 CHS 78 LKS RP

76 CHS 34.5 LKS MC

64.03 $\frac{1}{8}$ E21.34.5 $\frac{1}{8}$ W

82.20 92.7 41.100.7
 64.03 515 E
 20.871

26 Wednesday, January 26, 1938

26th Day—339 Days to Follow

May 27

RUNE FROM $\frac{1}{8}$

7 LKS ENTER SWAMP

12 LKS LEAVE SWAMP

41 CHS 14 LKS $\frac{1}{8}$

WELL 025 LKS N

SET $\frac{1}{16}$ AT 2059

OAK POST

SET $\frac{1}{8}$ ON $\frac{1}{16}$ LINE 2093

BT MEM LOCK 14° 56'E

27.6 LKS

SET $\frac{1}{8}$ ^N 242.4 CH FROM 196

Thursday, January 27, 1938

27th Day—338 Days to Follow

27

4 JUNE 40

454 FT 0 FFSET

30 FT

484 AT SET BACK

610.2 FT. OLD IRON

599.5 OLD IRON

610 OLD IRON

710 OLD IRON ACROSS RD

1210 TO HUB

500 FT MONTA HUB

385 FT HUB EDGE OF RD

89 $\frac{1}{2}$ A 92 $\frac{1}{2}$ A 100.74 D

COURSE 515° E

508.1 FT.

28

Friday, January 28, 1938

28th Day—337 Days to Follow

JUNE 19

19 CHS 86 LKS CENTER RD

20 CHS 04 LKS

FELL 48 LKS

20 CHS 04 LKS

Saturday, January 29, 1938

29

29th Day—336 Days to Follow

446.7

21 LKS 17" WP W

8.5 LKS 14" WP E

5 CHS 94.8 LKS 1/8 POST

26 CHS 7 LKS SEL POST

55 MILES

30 Sunday, January 30, 1938
30th Day—335 Days to Follow

AVE. P.

55 LKS FLAG

1ST Δ 88° 50' BASE 104.25 LKS
2ND Δ 177° 40' LINE
VAR 2° 40' E

3RD Δ 88° 50'

4TH Δ 177° 40'

61.38 CHS ACROSS LAKE

61.93 TO SHORE

63 CHS 50 LKS FOLLOW

SHOULDER PRIVATE RD

72 CH 87 LKS INTERS BRD

76 CHS 72 LKS

FELL 21.7 LKS W

50 MILES

Monday, January 31, 1938

31st Day—334 Days to Follow

AVE. P.

INCLUDED Δ E 84° 27'

200 FT TO OLD BRD

RUNS 200 FT CENTER TOWN RD

300 FT ENTER SWAMP

500 FT LEAVE SWAMP

966 FT TO END

209 FT FELL 9 FT W

757 FT

S 24½ W 150 FT

976 FT END

45 MILES

32 Tuesday, February 1, 1938

32nd Day—333 Days to Follow

Aug 11

S 2 1/4 E 100 FT S E I R O N
S 88 W 315 FT S R I R O N

50 FT FRONTAGE

INCLUDED ANGLE 132 1/2

COURSE N 44 1/2 W

FRONTAGE IRON TO IRON 50 FT

INCLUDED ANGLE 58° 7'

COURSE N 77 1/4 E

INCLUDED ANGLE 79° 18'

INCLUDED ANGLE 90° 8'

FULL 81.7 LBS W
50 MILES

521

133

100

754

Wednesday, February 2, 1938

33rd Day—332 Days to Follow

33

521 FT 133 FT 100 FT

55 MILES

[Faint, mostly illegible handwritten notes on the right page, including numbers like 36 FT, 24 FT, 12 FT, and 105 FT.]

34 Thursday, February 3, 1938
34th Day—331 Days to Follow

AUG 11

BASE 66 LKS

A 85° 24' Δ 85° 27'

Δ 170° 48' Δ 170° 52'

A 85° 26' Δ 85° 28'

Δ 170° 52' Δ 170° 56'

Δ 85° 24' A 85° 27'

Δ 170° 50' A 170° 53'

A 85° 26' N 85° 26" U

Δ 170° 54'

19 LKS 19 CHS 65.7 LKS AUB

8263

2797 20 CHS POST

27 CHS 92 LKS

Bisch Friday, February 4, 1938 .35

35th Day—330 Days to Follow

AUG 20 58 MILES

10 FT SHORE TO IRON

193 FT TO CON POST

229 FT TO 1/8 STAKE

383.3 FT TO GARAGE COTTN

Δ 121 1/2 COURSE N 20 1/2 E

300 FT HUB OFFSET

BUILDING COURSE N 66 1/2 E

W 6 FT 3 IN E 13 FT 11 IN

36 FT 4 IN -

60 FT OFFSET 100 FT N 20 1/2 E

A 25° 35' TO SE CORNER

DREWS HOUSE 51 FT

Δ 57° 37' TO NE CORNER

DREWS HOUSE 50.4 FT

24 FT 28 FT 17 FT 11 FT 11 FT

2 FT 12 FT 12 FT 16 FT



106 FT LKSH

53 FT TRAVEL

36

Saturday, February 5, 1938

36th Day—329 Days to Follow

29 AUG. MARTY 54 MILES

505 FT CONCRETE POST

495 FT. CTRD TO POST

641 FT TO CONCRETE PT

500 FT FROM POINT

300 FT STK TO STK

37 FT CENTER HENRY 32

37

Sunday, February 6, 1938

37th Day—328 Days to Follow

3 SEPT.

LARSON

599.7 FT ^{FROM JOHNSON} BACK4 110 $\frac{1}{2}$ 159.6 FT

38

Monday, February 7, 1938

38th Day—327 Days to Follow

5 SEPT

511.5 FT ALONG RD

473 FT RR 711 FT TO LAKE

647.3 FT DEP

204.6 FT ALONG RD

448 FT RR

640.2 FT TO LAKE

8 Tuesday, February 8, 1938

39th Day—326 Days to Follow

6 SEPT

SOUTH SHORE

LOT 24 PELICAN LAKE

144 FT FRONT

100 FT SIDE 85 FT SIDE

+ 34 FT RTWAY + 62 FT RTWAY

155 FT ACROSS BACK

100 FT N 90° 45' COURSE N 1/2 E

400 FT

100 FT 70° 45' COURSE N 1/2 E

300 FT

100 FT 10° 45' COURSE N 1/2 E

300 FT

100 FT 2° 15' COURSE N 1/2 E

400 FT

100 FT 10° 45' COURSE N 1/2 E

261.8 FT

372 FT ALONG RD

953.4 FT TO LAKE

40

Wednesday, February 9, 1938

40th Day—325 Days to Follow

7 SEPT LAWSON 9 MILES

208 FT 178 FT

208 FT 171 FT FROM FLAG MVB

587 $\frac{3}{4}$ W Δ W TO N $90^{\circ}47'$

6 LOTS 103.5

41

Thursday, February 10, 1938

41st Day—324 Days to Follow

11 SEPT SECT. 34 35-11

64 MLS

N $77^{\circ}10' W$ COURSE LINE

206 FT CNTR RD

212 FT IRON 236 IRON

254 FT M.C.

N 41 $\frac{1}{2}$ FT MC ON S SIDE 74 CNTR2 N 61 $\frac{1}{2}$ Δ N $90^{\circ}45'$ COURSE N $13\frac{3}{4} E$ Δ 400 FT Δ RT $8^{\circ}25'$ COURSE N $22\frac{1}{2} E$

300 FT

 Δ RT $10^{\circ}2'$ COURSE N $32 E$

300 FT

 Δ RT $2^{\circ}36'$ COURSE N $34\frac{3}{4} E$

400 FT

 Δ RT $10^{\circ}30'$ COURSE N $45\frac{1}{2} E$

261.8 FT IRON

388 FT CNTR RD

953.4 FT TO IRON $\frac{1}{2}$ POST

42 Friday, February 11, 1938
42nd Day—323 Days to Follow

SEPT P

SSMS

1ST 89°15' 2ND 80°50' 3RD 70°48'

4TH 68°12'

130 FT RD

171 FT RD

196 FT RD

1ST 171°35' 2ND 169°58' 3RD 129°24'

4TH 169°30' TANG N 34½ E

230 FT RD

IRON 6.3 FT RD

354 FT INTSET LINE

43 Saturday, February 12, 1938
43rd Day—322 Days to Follow

SEPT 13

95MLS

500 FT SET IRON

918 FT TO 170

Δ 50°33' COURSE 552¾ E

100 FT

Δ RT 13°10' COURSE 538 E

100 FT

Δ RT 2°10' COURSE 536¼ E

100 FT

Δ LFT 10°9' COURSE 545½ E

100 FT

Δ LFT 18°19' COURSE 564 E

100 FT

THENCE INCLD Δ 124°54' COURSE 583¾ E

480 FT 102 FT W DEP

44

Sunday, February 13, 1938

44th Day—321 Days to Follow

SEPT 14

60 MLS

 $\Delta 100^{\circ} 37' 200 \text{ FT } 7916 \text{ } 579\frac{1}{2} \text{ E}$ $\Delta \text{RT } 36^{\circ} 47' 200 \text{ FT TANG } 540\frac{1}{2} \text{ E}$

44 FT CONC POST

154 FT CONC POST

 $\Delta \text{RT } 36^{\circ} 11' \text{ COURSE } 543\frac{1}{4} \text{ E}$

290 FT

 $\Delta \text{int. } 67^{\circ} 02'$ COURSE $N 22\frac{1}{2} \text{ E } 541 \text{ FT}$

620 FT

100 FT $\Delta 90^{\circ} 250 \text{ FT}$

45

Monday, February 14, 1938

45th Day—320 Days to Follow

SEPT 15

52 MLS

COURSE SPT E OF LINE FROM MC

922.1 FT WELL 2 FTS

TURN RT A SET IRON 165 FTS

TURN RT A 500 - 165 FT IRON

TURN RT D 200 - 165 FT IRON

TURN RT E 0 - 165 FT IRON

40 FT IRON ON LAKESHORE

IRON ON RD TO IRON 55.4

14 FT RTD RT OF WY

462 FT SHORE TO LAKE

381 FT INTERSECT LINE

290 FT IRON

53.4 FT LAKESHORE

170 FT MC TO IRON

46

41-91

Tuesday, February 15, 1938

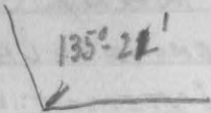
46th Day—319 Days to Follow

△ from old fence Northerly
 76'-42' N. 17½ W. on diagonals
 (Var. ^{23'} of old ^{center} approx 4½° E)
 N. westerly along Line 458.3
 to hub.

519.6 Fell 39.9 W. N.T.C. 0768 =

458.3 Set flag str in brush ^{40.23'}

Line 35.2



△ on 1/8 Line 85°-54'
 Dist N 65 1/8 line 916.8

Wednesday, February 16, 1938 47

47th Day—318 Days to Follow

SEPT 19.

878 FT IRON TOWER
 900 FT LAKE SHORE

48

Thursday, February 17, 1938

48th Day—317 Days to Follow

COURSE N44 $\frac{1}{2}$ W124.8
126.4
141.2
24.8 FT IRON PIPE

141.2 FT CONCRETE

124.8 226.3 FT IRON IN RD

126.4
226.3
154.8 FT RD

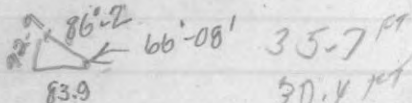
194.8 FT RD

85 FT RD

100 FT HUB

 Δ INCL 87° 22' COURSE 548' Δ LET 17° 14' ^{85 FT} COURSE 531' Δ LET 58° 01' COURSE 521'TO $\frac{1}{8}$ LINE 86.2 FT

83.9 FT 92.9 FT



30.4 FT

39.6 FT

40.2 FT

49

Friday, February 18, 1938

49th Day—316 Days to Follow

26 SEP

29 M 45

3° W VAR

158 FT LAKE T. RD

181.5 SWAMP EDGE

75.82' N

71.04' E

85° 32' 1/2

71.04'

1/2 in - 1/2 in
July 9


50 Saturday, February 19, 1938
50th Day—315 Days to Follow

~~1 chain + 60 L~~
1.60 to iron pipe
3 to road
3 1/2 pump house
2 T + 2 C + 39 L

51 Sunday, February 20, 1938
51st Day—314 Days to Follow

20 chains - tally #
T-2 chains to ~~high~~ by lake
long lake 1 chain + 2 rods

20 chains - tally # - east
25' - hub by lake - east
south 1 chain + 2 rods

T-7-E
T-85.32' N - 
1. 171.04' E

Total - 40-89

2. 85.0-32 1/2'
171.04'

14 links - 1 gain
tally 9

54 Wednesday, February 23, 1938
54th Day - 311 Days to Follow

East
Washington's Birthday

T-1-N	T-1-E
T-2-N	T-2-E
T-3-N	T-3-E
T-4-N	T-4-E
T-5-N	T-5-E
T-6-N	T-6-E
T-7-N	T-7-E
Total	T-8-E

90-74

98-04 - Total

55 Thursday, February 24, 1938
55th Day - 310 Days to Follow

North Line

T-1-E
T-2-E
T-3-E

T-1-S
T-2-S

Kipple

N to E 101°
5-79 $\frac{3}{4}$ E

680' Oak Post
Tree Oak 8" BT 10 $\frac{1}{2}$ '
along same line

58

Sunday, February 27, 1938

58th Day—307 Days to Follow

Township 32 N. R. 1 E.

Monday, February 28, 1938

59th Day—306 Days to Follow

Gout Notes

West bet Sec 6 E 31. Var 7² 55

17.50 Stream 5/16 wide S.E.

40.00 Set 1/4 Birch 10 N. 12 W. 19

Birch 7 S 39 E 21

82.50 Intersect R.L. 2.50

N. temporary post

Set post 32 E 33 R. 1 E 2 E.

Hom 7 N. 44 E. 58

" 12 N. 27 W. 35

" 20 S. 31 W. 61

" 10 S 19 E. 40

East Corr Sec 6 E 31 V. 70 45 E

87.22 Creek 16 N. E

38.82 Set 1/2 mile past

Hom 15 N 30 W. 20

" 10 S. 25 E. 18

78.82 Set cor. Secs 6 E 31
or one mile.

60

Tuesday, March 1, 1938

60th Day—305 Days to Follow

Horn 10 N. 46 E. 40

" 20 N. 25 W. 21

" 12 S. 65 W. 40

" " S. 26 E. 12

118.82 Set $\frac{1}{4}$ Sec Cor.

Horn 10 N. 40 W. 37

" 12 S. 40 E. 04

158.82 Set Cor 5, 6, 31 & 32

Horn 10 S. 82 E. 21

" 14 N. 54 E. 25

" 20 N. 25 W. 21

" 12 S. 65 W. 40

Mendron Line

Wednesday, March 2, 1938

61st Day—304 Days to Follow

61

North lot Secs. 7 & 12 U. 74 E

Sec Co 6. 7 1 & 12

Birch 18 S 52 E. 33

Horn 18 N. 38 E. 13

" 8 N. 57 W. 26

" 12 S. 75 W. 12

North lot Secs 1 & 6 U. 70 E

15.56 Pine 18

40.00 Set $\frac{1}{4}$

Horn 12 N. 40 W. 3

Bal. 8 S. 45 E. 8

80.00 Set post sec

Horn 24 S. 3 E. 21

" " N. 50 E. 10

" " N. 75 W. 35

" " S. 15 W. 25

8 Thursday, March 3, 1938

62nd Day—303 Days to Follow

8 Friday, March 4, 1938

63rd Day—302 Days to Follow

PAGE - Thursday, March 3,
1938

TO END - BLANK with
exception of notations.

Recapitulation

Paid	Received	Received	Paid
		(00) + 78.8 = 86.2	
	86.2		
January	86.2		
February	172.4		
March	517.2		
April	689.6		
May	<u>6430.44</u>		
June			
July			
August			
September			
October			
November			
December			
	TOTAL		
	Balance to new Account		

Telephone Numbers

78.5
78.8
<u>630.4</u>
630.4
551.6
<u>6209.44</u>
$62 + 6209.44 = 6430.44$
<u>6209.44</u>
221.00

Telephone Addresses

12.5194
.66

751194

754194

8.263134

102.3
.0768

519.6 | 399.0000

36372

35280

31176

41040

46568

428.4

380

196.3

1004.7

200
 .0021

200
 .000

200
 .000

0.000000

499.09

428.44

458.3
0768

36664

27498

32081

35,19744

Memoranda

.182

66

10922004 | .0024
 4600.00

1042

4008

120.12

5920

6138

17960

4008

.55

2427

9120

61.93

9533

1032

1088

15 10

.0004

.0004

5

.0004

60

46

30

20

20

030

20

03360020

0.2040

0.1120

49.1039

1.25

17960

2455195

17850

982078

110

491039

.173

61.379875

66

1038

1038

11418