

8

OLDFLDBK 101

101

# KEUFFEL & ESSER CO.

DRAWING MATERIALS  
AND  
SURVEYING INSTRUMENTS.  
NEW YORK.

CHICAGO. ST. LOUIS. SAN FRANCISCO. MONTREAL.

## TABLES FOR EXCAVATIONS AND EMBANKMENTS.

DISTANCES FROM CENTER OF ROADWAY FOR CROSS-SECTIONING.  
ROADWAY 18 FEET WIDE. SIDE SLOPES 1 TO 1.  
FOR SINGLE TRACK EXCAVATION.

"Copyright, 1895, by Keuffel & Esser Co."

	0	.1	.2	.3	.4	.5	.6	.7	.8	.9	
0	9.0	9.1	9.2	9.3	9.4	9.5	9.6	9.7	9.8	9.9	0
1	10.0	10.1	10.2	10.3	10.4	10.5	10.6	10.7	10.8	10.9	1
2	11.0	11.1	11.2	11.3	11.4	11.5	11.6	11.7	11.8	11.9	2
3	12.0	12.1	12.2	12.3	12.4	12.5	12.6	12.7	12.8	12.9	3
4	13.0	13.1	13.2	13.3	13.4	13.5	13.6	13.7	13.8	13.9	4
5	14.0	14.1	14.2	14.3	14.4	14.5	14.6	14.7	14.8	14.9	5
6	15.0	15.1	15.2	15.3	15.4	15.5	15.6	15.7	15.8	15.9	6
7	16.0	16.1	16.2	16.3	16.4	16.5	16.6	16.7	16.8	16.9	7
8	17.0	17.1	17.2	17.3	17.4	17.5	17.6	17.7	17.8	17.9	8
9	18.0	18.1	18.2	18.3	18.4	18.5	18.6	18.7	18.8	18.9	9
10	19.0	19.1	19.2	19.3	19.4	19.5	19.6	19.7	19.8	19.9	10
11	20.0	20.1	20.2	20.3	20.4	20.5	20.6	20.7	20.8	20.9	11
12	21.0	21.1	21.2	21.3	21.4	21.5	21.6	21.7	21.8	21.9	12
13	22.0	22.1	22.2	22.3	22.4	22.5	22.6	22.7	22.8	22.9	13
14	23.0	23.1	23.2	23.3	23.4	23.5	23.6	23.7	23.8	23.9	14
15	24.0	24.1	24.2	24.3	24.4	24.5	24.6	24.7	24.8	24.9	15
16	25.0	25.1	25.2	25.3	25.4	25.5	25.6	25.7	25.8	25.9	16
17	26.0	26.1	26.2	26.3	26.4	26.5	26.6	26.7	26.8	26.9	17
18	27.0	27.1	27.2	27.3	27.4	27.5	27.6	27.7	27.8	27.9	18
19	28.0	28.1	28.2	28.3	28.4	28.5	28.6	28.7	28.8	28.9	19
20	29.0	29.1	29.2	29.3	29.4	29.5	29.6	29.7	29.8	29.9	20
21	30.0	30.1	30.2	30.3	30.4	30.5	30.6	30.7	30.8	30.9	21
22	31.0	31.1	31.2	31.3	31.4	31.5	31.6	31.7	31.8	31.9	22
23	32.0	32.1	32.2	32.3	32.4	32.5	32.6	32.7	32.8	32.9	23
24	33.0	33.1	33.2	33.3	33.4	33.5	33.6	33.7	33.8	33.9	24
25	34.0	34.1	34.2	34.3	34.4	34.5	34.6	34.7	34.8	34.9	25
26	35.0	35.1	35.2	35.3	35.4	35.5	35.6	35.7	35.8	35.9	26
27	36.0	36.1	36.2	36.3	36.4	36.5	36.6	36.7	36.8	36.9	27
28	37.0	37.1	37.2	37.3	37.4	37.5	37.6	37.7	37.8	37.9	28
29	38.0	38.1	38.2	38.3	38.4	38.5	38.6	38.7	38.8	38.9	29
30	39.0	39.1	39.2	39.3	39.4	39.5	39.6	39.7	39.8	39.9	30
31	40.0	40.1	40.2	40.3	40.4	40.5	40.6	40.7	40.8	40.9	31
32	41.0	41.1	41.2	41.3	41.4	41.5	41.6	41.7	41.8	41.9	32
33	42.0	42.1	42.2	42.3	42.4	42.5	42.6	42.7	42.8	42.9	33
34	43.0	43.1	43.2	43.3	43.4	43.5	43.6	43.7	43.8	43.9	34
35	44.0	44.1	44.2	44.3	44.4	44.5	44.6	44.7	44.8	44.9	35
36	45.0	45.1	45.2	45.3	45.4	45.5	45.6	45.7	45.8	45.9	36

Calculated by Julien A. Hall, M. Am. Soc. C. E.

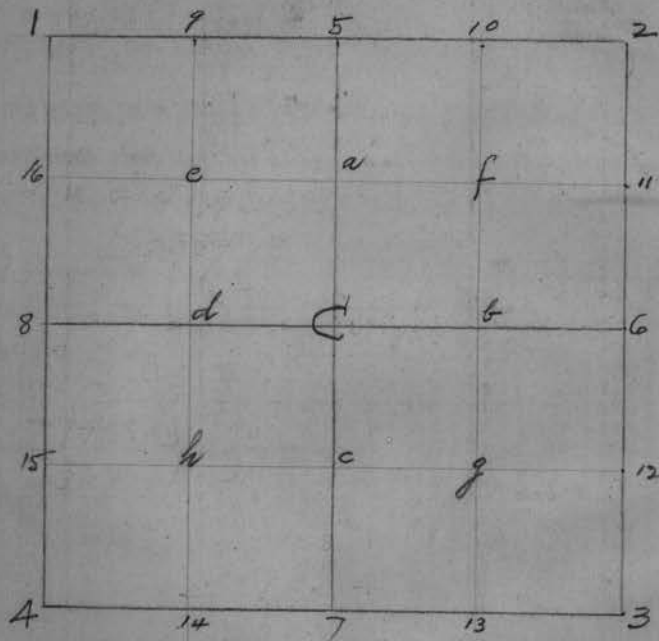
For Keith's Railroad Curve Tables see end of book.

27-39-11

131  
65 33

H.C. Hall & Sons  
L<sup>re</sup> du Flambeau.

# Section Diagram



Used from page 57 on

# INDEX

Book 8.

Pages.	Sec	Tr.	R.	Surveyed for
1 - 12	27	39	11	Lieut. Sahaw duplicated in B. 9
17 - 55	20	39	5	John E. McKenna
57 - 60	6	"	"	J. H. Baechle
63 - 97	28	39	6	F. V. Everhard
98	"	"	"	Mc Coy + Divinsky
99 - 114	34	42	6	Ed. Rudolph
115 - 130	13	41	6	Dr. A. W. Wilson
131 - 140	15	40	5	Subd. for C. J. Huber <sup>1940</sup>

27-39-11

In Lieut. Cahon

(Copied + clarified in Book 9)

June 10<sup>th</sup> 1927

Fair

NW Mint

HC Hall, C. Vaughan, RH + MH. (BM look 2 trips Taxi)  
Cruise 1<sup>st</sup> W Sec 27

Meas S. from Orig. NW x Sec 27, an old random  
12.00 drive temporary peg

Find most of corners described as  
West of Big Fork Lake.

Vaughan to Rhinelanders on night bus.

June 11<sup>th</sup> 1927 cool + overcast in AM.

H.C. Ray + Marshall Hall (BM look Taxi)

trace Hutchinsons lines to SE x Sec 27 +

find post set by old farmer stub bearing  
orig scribe marks. The course does  
not check out but this corner evidently  
stands where it was located when the  
other tree existed. Follow Hutchinsons lines  
to lake and also to North. Find his E 1/4 S.  
and MC on his 1/4 line but no traces on  
1/2 Sec 27 at Big Fork Lake.

Reid saw tract June 10<sup>th</sup> + 11<sup>th</sup> from find Block

2

June 13<sup>th</sup> 1927

Fair

West wind

RH HC + MH.

(BM look - Taxi)

Set a picket in lake at MC on 4<sup>th</sup> 27 (Little Fork)  
by S <sup>27</sup>/<sub>36</sub> W 36 lbs from orig. W pine  
& stump bearing the scribe marks.

Now Set up at Orig NW x Sec 27 by 10 lbs N 45° E  
from orig pinch with marks and over post  
found. Turn E to S Random line.

① ~~95°-26'~~ ② ~~190°-59'~~

95°-02 1/2' ② 190°-06' 285 09.30 (75°-03'-10")

try to follow old random to S, but find it  
crooked. Run off from it to the west as we  
near lake.

At about 8.50 offset 8 links E.

At 11.688 ch. S. of Sec. Cor. hut (on 8 lbs of set)  
Turn SE to head at MC (Orig. on N. side S. fork lake)

Def. (L) ① 1°-34' ② 3°-08' 30 (1°-34'-15")

lay off it & face to E. 1.50 ch.

① 74°-35' ③ 2-23'-45" 30 (74°-35'-10")

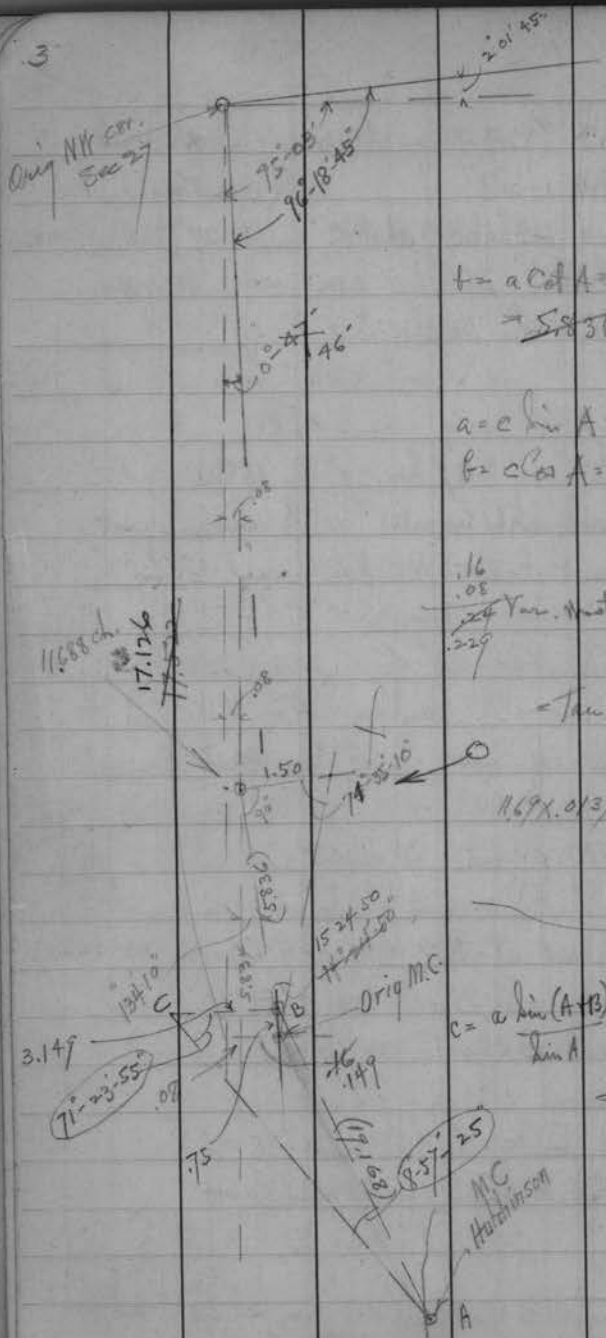
- See Sketch next page -

- Down gives Orig. MC 17.07 S of NW cor + 63 1/2 lbs west  
of a straight line between NW + SW corners.

12000  
512  
11.688



Orig MC corr.  
Sec 27



$$t = a \cot A = 150 \times 3.89082$$

$$\rightarrow S 836 \text{ ch. } 584$$

$$a = c \sin A = 0.2737 = .149$$

$$b = c \cos A = 9.9963 = 5.834$$

$$+ 11.688$$

$$\hline 17.522$$

$$17.126$$

$$.16$$

$$.08$$

$$24 \text{ Var. Mast.} = 17.522 \rightarrow$$

$$.01337$$

$$.0137 \text{ per ch.}$$

$$= \text{Tan. } 0^{\circ} 47'$$

$$0^{\circ} 46'$$

$$11.69 \times .0137 = .16015 \text{ Constant}$$

$$-.08$$

$$-.08 \text{ E. at}$$

$$11.49 \text{ in offset}$$

$$c = \frac{a \sin(A+B)}{\sin A} = \frac{3.149 \cos 18^{\circ} 36' 05''}{\sin 8^{\circ} 57' 25''}$$

$$= 3.149 \times 9.47763 = 29.85$$

$$1557$$

$$19.168 \text{ ch}$$

Move of E. at 11.69 & sight to MC. Let post (witness) for witness corner on this line 75 links North of orig. MC location. This witness corner corner on narrow neck of land. Mark.

W Bind 5" N 0° 20' E. 23 lbs.  
Aspen 7" N 74° W 33 "

At witness cor. —  
Turn def. = S to E. to Hutchinsons MC on 1/4 line.  
① 16° 00' 30" ② 32° 02' Ar 16° 01' 20"  
Per. ① 48° 04' ② 64° 05' 30" 15° 58'

From MC lay off a A base SW. 3.149 ch.  
↳ to SW  
① 99° 38' ② 199 16' 30" ③ 298 55' 30" (99° 38' 30")  
↳ NE to SE.  
① 71° 24' ③ 214° 11' 30" (71° 23' 50") ✓

Adjusted
8° 57' 25"
71 23 55
99 38 40
180° ✓

At Hutchinsons MC. on 1/4 line NW to N.  
① 8° 57' 30" ③ 26° 51' 30" ⑤ 44° 46' 30"  
8 57 10" 8 57 18" ✓  
10) 89 34 (8° 57' 24" ✓

At Hutchinsons MC on 1/4 line Turn NW to E from our witness cor.  
106° 19' ± - his 1/4 line (approx.)  
to 3 lakes for night

June 14th 1927

Fair. 75°

HC, RA &amp; MA.

- Louk Taxi


Locat. Gahan (approx)

check triangulation by etc base of 1.00 E. of NC  
← from N side of slough.

$$\begin{array}{r} \textcircled{1} 14^{\circ}-31\frac{1}{2} \quad \textcircled{2} 29.02 (14^{\circ}-31' \text{ vert}) = 3.862 \\ + .75 \\ 4.612 \\ + .80 \\ 5.412 \\ - .315 \\ 5.097 \\ 12 \\ 17.077 \end{array}$$

(Discover error of 1" in copying  
Δ from page 2 to page 3)

Meas E. on N line.

496.8 hub at W edge slough stream + 2  
lay of at. ← N 1.38 ch.   
← E to S.

$$\textcircled{1} 78^{\circ}-06' \quad \textcircled{2} 156^{\circ}-10' \quad \textcircled{3} 234.1430 (78^{\circ}-04'-56')$$

$$76.159 \quad (\text{Cat. } 11^{\circ}-55'-10'' = 473727 \times 130 = 6.1586)$$

11.127 over slough to picket  
+ 9.563

$$20.690 \quad \text{Rt } \angle \text{ N to } \frac{1}{8} \text{ post } .733$$

$$= 20.703 \text{ on true line } = .03543 = \tan 2^{\circ}-01'-45''$$

Meas. S. on cut out random line from  
Hutchinson's  $\frac{1}{8}$  post on HSec 27

Move about 1" E to be on A and random intersection  
and turn S to W - random lines

$$\begin{array}{l} \textcircled{1} 48^{\circ}-10'-30'' \quad \textcircled{2} 176.2630 (88-13-15^{\circ}) \\ \textcircled{3} 264.45 (88-15^{\circ}) \quad \textcircled{4} 358.03 (88-15-45^{\circ}) \\ 88^{\circ} 18' 15'' \checkmark \quad 86^{\circ} 00' 48'' \\ \text{between correct lines} \end{array}$$

$$18.59 \text{ hub - at } \angle \text{ West to Hutchinson's } \frac{1}{16} \text{ post } .085$$

$$\frac{.085}{18.592} = .00457 = \tan 0^{\circ}-15'-42''$$

$$\begin{array}{r} 25.000 \\ - 1.191 \\ 23.809 \end{array}$$

$$23.809 \text{ hub } \text{cor. W. } .107$$

$$25.00 + 1.476 \text{ correct W. } .114$$

$$26.476 \text{ hub on ridge } .121$$

$$27.384 \text{ " at foot of ridge } .125$$

$$\text{The SW at def. } \angle \text{ (R) } \textcircled{1} 19^{\circ}-44' \quad \textcircled{2} 39.2830$$

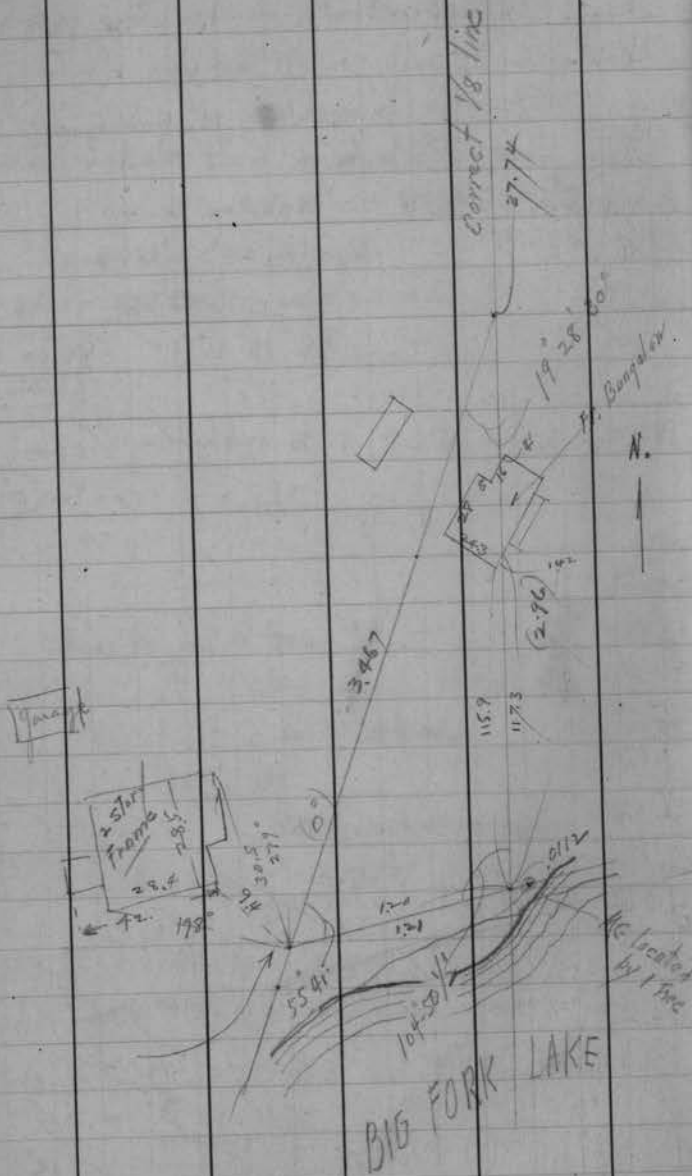
$$38.42 = (27.74 \text{ on true line } \dots 19^{\circ} 28' 23'' = 3.467) \quad 17.4415 \checkmark$$

$$\text{(From base } \angle \text{ N E to E to Me } 55^{\circ} 41' \quad 121)$$

$$\frac{121}{55.4145} = .011 \text{ trian E.}$$

$$\text{The def. } \angle \text{ (R) } \textcircled{1} 10^{\circ}-58' \quad \textcircled{2} 21.6730$$

$$\text{Rev. } \textcircled{1} 32.57 \quad \textcircled{2} 43.5630 \quad 10^{\circ}-58'-45'' \quad 5.52 \text{ ch.}$$



June 15<sup>th</sup> 1927

Fair + calm 75°

Same party.

(Lunk-Taxi)

Continue Traverse along Big Fork Side of Lot 5  
— from page 6

(at 4th shore 12° S.) (at 552 shore .50 E) 1 P. 12.47  
Def. (L) to MC on 1/4 line from one BT to 29.6 1.25  
① 32° 30' ② 64° 54' (32° 27') ③ 77° 21' (32° 27')  
32° 25' ✓

Reference Hitchhike MC at SE x Lot 5

Trail in W Pine 6"	N 34° W	258 links
" " 10"	N 43 1/2° E	13 "

Now turn NW to E at foot MC. on 1/4 line + run E on (offset .3 ft N)

3318 = 57-30 (106° - 19° - 10°) ✓

(Lot stake 29.5' N of MC)

1.801 nail in tree on tree random 1 1/8" S

2.973 hut (stitch) on 3 offset N. 5 1/8"

8.02 hut in swamp " " 8 1/4"

10.065 hut at foot of hill " 9 1/2"

11.457 " on hill " com. S. 10 3/8"

Fall 1 ch. N. = 0.0071  
0° - 02' - 40"

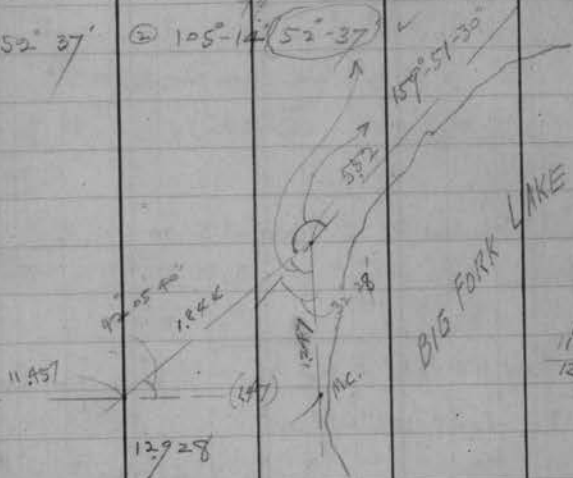
At 11.457 move S .3 on to true random + true def. NE.

① 42°-05'-30    ② 84°-11'-30 / 42°-05'-45°

① 52° 37'

② 105°-14' / 52°-37'

159°-51'-30



E-W 1/4 line

HC & H# meas. in Lady Smith Beach To locate orig. lot lines Vander Beach etc.  
Licut. Jahan joins us in PM

926  
29  
928

June 16<sup>th</sup> 1927

Overcast.  
(Lomb - Taxi)

Same party

Licut. Jahan joins us in AM  
Set up over old post near shore on Little Fork (N of MC)  
and run Ely to another old stake

11.457

197.8

N edge of old post. int L to S (S 35° W)

168' to ~~road~~ lot line

384.55  
~~384.4~~

Intersect random offset  $\frac{1}{2}$  line 5.3 + E ch. Turn - W to NW

① 32°-50'    ② 65°-41' (32-50 1/2) Rev

(See sketch page 11)

3198 30 30 (32-50-10)

470

3" Iron Pipe ~~on line~~ 2.3 N of curved line.

572

hub int L N 12.0' for offset

+7.9

579.9

wall of church 5.27 S N of N corner da

(628

curved S 3.05 + 12 - 15.05)

622

fall 17-12 = 5' N of 3" iron pipe

827.

hub on hill. def L (R) 9°-27' A. to Dows on 100.5

+99.1



926.1 fall 4.50 N of orig corner (dist) = .00486 = Tan

Stake + SP S. 56° W 9.3' from Dows cor.

(114) ch

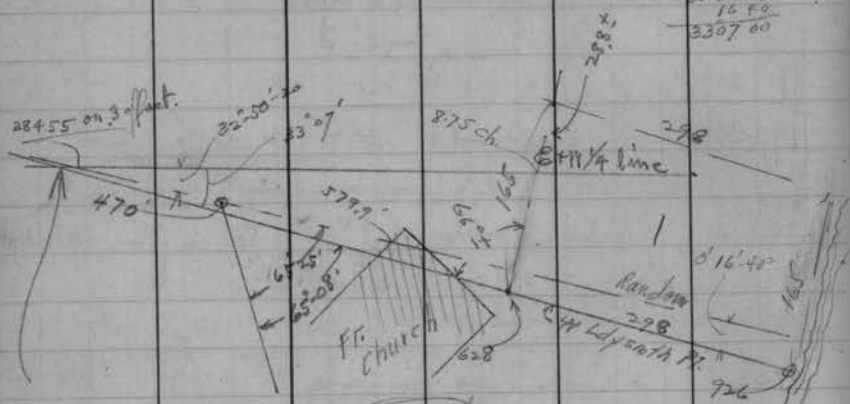
0°-16'-40"

Move S. date. 15.05 at 628 + drive a hub

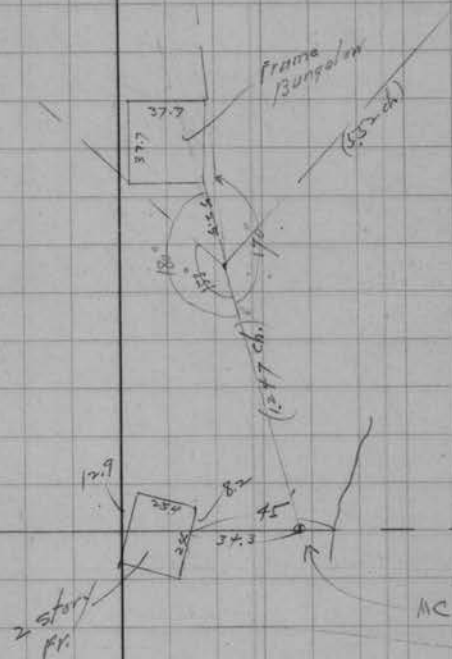
Turn N to E  $90^\circ + 0^\circ 16' 40''$

Rec. + strike church 4.96<sup>W</sup> S of E. Cor.

3252.20  
16.40  
3307.60



True Intersect'n falls at 5.30 ch. on 1/4 line  
382.2' - W Lady Smith Pt.



finish



13

14

Pages 13 to 16 Blank

17

SEC 20-39-5

for John McKenna

August 19<sup>th</sup> 1907 3 Halls + car. Fair 70°

Identify orig NEx Sec 20 by the two original cedars - one of which bears scribe marks. There is a birch (NW) marked which looks old enough for Govt. marks.

Meas. West + follow Fisher's line 2° 50' E. Ver.  
0.0 Corner.

296 6.00 leave swamp, NEx + SW + up steep hill

9.46 hub

14.017 " in sight of lake

15.17 Fisher's tally "1000"

20.353 Rt. S. 0.5 ft + act head I iron bolt 1343.3  
(1343.3) 5" below surface + mark depth 7" 65% W 33.3 ft. 23  
which 7" N 63 E 97.6"

(Sec Page 50) 17.30 E Rd W + N + S.  
(1352.1)

20.00 hub in rd hubs by N 22 lbs.  
1350 S 22°

30.00 hub in rd. on summit peg by N 22 lbs. (37.3)  
S 15°

(36.63 traverse SW) = 2417.6'

36.782 fall 45' N of small pipe  
(2425.6) found by digging in filled in shore

2436 - show traverse S.

18

36782 = 2427.6' = 0.00185 = 0-0-40° Connects

The Y. Pine stump with "MC" has been grubbed out + lies about a chain NE. The other is loose on the beach.

32686.62' 1/4 cor in lake (see page 1343.31)

Drum

Iron pipe over small iron

4 Marks (in feet)

V. 0°

Y. Pine 8°

S 25° W

53.3 ft.

Y. " 6°

N 39 1/2° E

28.3 "

August 20<sup>th</sup> 3 Halls + car. Fair

Move E. 10 feet on Random H from 36.782 + begin traverse to S.

Assume Connected N line as E + W.

i. Random = N 89° 59' 20" W.

E to SW 102° 55'

- 89 59 20  
S 12° 55' 40" W

389.7 ft.

Thence def. 4 + 23 32 42 SW  
S 36° 28' 22" W

193.85'

Thence def. 26 - 18 03 50  
S 18° 24' 32" W

131.55'

to point NE of McKenna's stake + on E + W line

parallel to N line Sec 20 + 10 ft N  
of M. Skinn's stake = 660' S.  
243.9' W. + 247.6' = 2661.5' W.

Line  $1\frac{1}{2}'' \times 24''$  D.P. + Pitch Stake 18.00 ft.  
W. of above intersection (about N of M.S. stake)  
This is N of 20' road + reserved  
property.

Mark (Courses with pocket compass)

y Pine 12"	N 55° W	17.2'
y " 12"	S 65° W	20.2'

Run East on AZ. of 90° or parallel with N

① 71 34 30  
② 214 44 30 (71° 34' 50" ✓)  
- 71 35 28

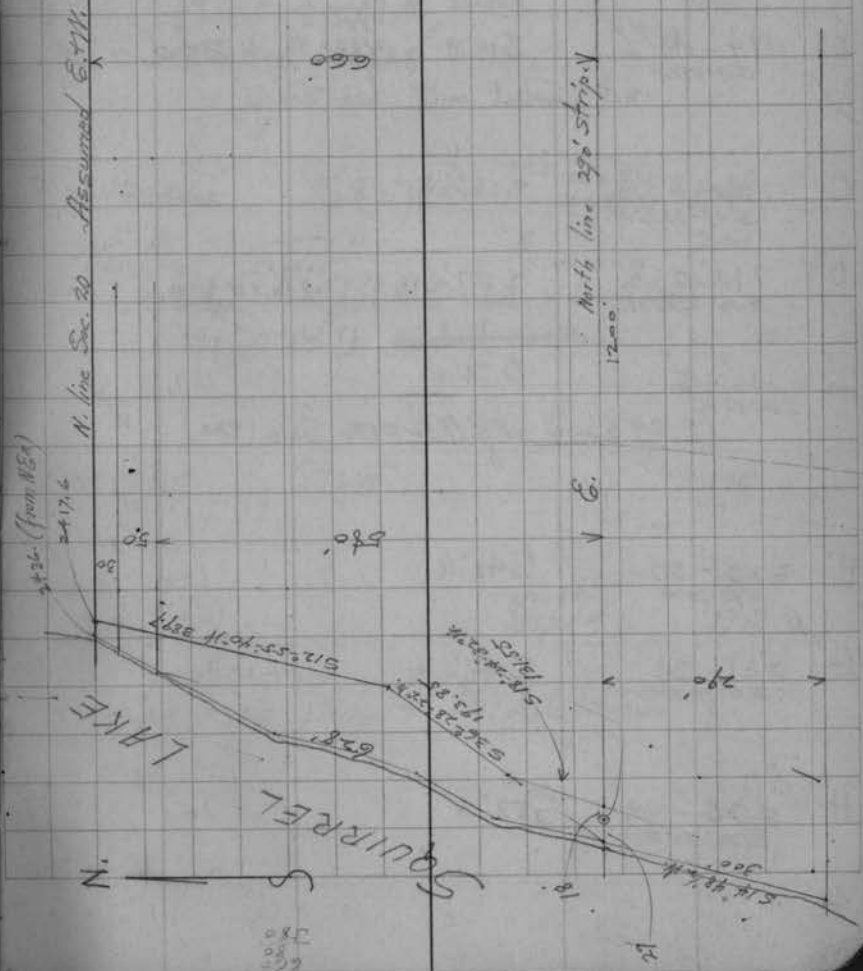
- 35.0 Squirrel Lake  
0.0 Iron Pipe

2661.5  
18.  
2679.5' W.

442.4 hub  
566.0 "  
1038.7 "  
1200 ± Road on curve

At 1155 Atx N then bush + meas for check:

659.55 Random W  
+ 1.3  
- 657.85 ✓  
657.25



Aug. 23<sup>rd</sup> 1927 Tuesday. Cool. N. wind.  
3 Halls & car.

2679.5  
+ 27.  
2706.5

From hut on shore 29.0' West of Iron Pipe  
at Sta 0 on page 19 =

Begin traverse of shore in lat. 90° Az = line E.

Needle

B<sup>5/16</sup> 194°-48 1/2' S 12° W 950'S  
2785.2 ft 300.0 post  
S 14° 45' W  
set picket on E. this strip

C 199°-33 1/2' S 16 1/2° W 200.0  
S 17°-33 1/2' W

D<sup>4/5</sup> 210°-25 1/2' S 27 1/2° W 1224'S  
2742.8 ft 100.0 post.

E 216°-45' S 34° W 100.0  
S 36°-45 1/2' W  
(= 2962.6 W 9 N E corr. See 20) ✓

F 223°-50' S 41° W 100.  
S 43°-50' W

G<sup>5/16</sup> 231°-39' S 48 1/2° W 1487'S  
3111.3 ft 100.

H 236°-02' S 53° W 100  
S 56°-02' W

I 248°-02 1/2' S 65° W 100.  
S 68°-02 1/2' W

J 254°-27 1/2' S 71° W 100  
S 74°-27 1/2' W  
hooked 5-6 617 X  
1557.05 S  
3382.34 ft

254.24  
100  
74.24

K 261°-59' S 79° W 100.0  
S 81°-59' W  
Total West. 3481.4

L 264°-28 1/2' S 82° W 718  
1591.3 S  
3680.5 ft 100.

264°-45' S 82° W X 200.  
S 84°-45' W

Under sliding bank - set witness post

171° - 12 ft. hooked 6-7

M 255°-25' S 73° W 125.

N 242°-53' 1702.55 S  
3957.3 ft 175.0

+ 38. old stake + lugged line S.

210 25 30  
180 30 30  
150 35 30  
127 37 30  
96 37 30

47.9  
175.0  
222.9

Aug 24<sup>th</sup> (AM) R.H. Helen, Keith - car

At 2:43<sup>6</sup> <sup>Time</sup> on <sup>Needle</sup> (shore at dock). Commence traverse S<sup>ly</sup> along shore.

⊕ 209°25' S 26½°W.

Cor 99°25' = .8711    30 ÷ .8711 = 34.44

Draw 5 marks in dock .5 from shore + 6.25 N of S. edge

80 ÷ .8711 = 91.84

pitch post on shore.

(351°36' East point Island - (Edge crib stake)

Since 175.00 lub.

" 108.

@ 192°23'

Needle  
S 11 W

91.84  
15.  
206.82

"

83.

@ 200°20'

S 17½ W

"

118.

@ 209°00'

S 26½ W.

"

144

191°59'

S 9 W.

628' to  $\pm$  Reserved Plot

194°51' + ✓

270  
209  
60  
25  
35

2436  
24  
270  
24

91.84  
206.82  
57.4



Sept 13<sup>th</sup> 1927

PM Fog. Very Hot!

3 Halls + car

Identify Doris E 1/4 cor. by his old post + of  
his 3" Tamarac N 19° W .38

Yaughan<sup>(?)</sup> has put a large post in its place +  
Marked (V. 1-50'E)

W. Pine 12" S 42 1/2° W .542

Run West on old cut out random course

0.0 Yaughan's post

.01 Old Doris post evidently moved west  
(S 88-40° W With Var. plate - 1-50'E)

(19.817  
1307.92

at L N to Doris 1/2

(76.7'  
1162)

20.00

Set old post for hub + turn E to N  
to Doris 1/8 post located by his B.T.  
81° - 02'

1.176

20.153  
(1330.15)

Rt L N. 1-216 + Set 1/8 Sec. Post (Oct. 17<sup>th</sup>)  
Mark Cedar 15° S 21° E 13. feet  
+ Doris " 12° N 88° E. 43.3 "

29.65 leave Swampy. - 195'

29.862 hub

31.447 "

33.00 W. edge Hwy. 2174

1/8<sup>th</sup> W of Center

34.75 hub

(20975)

(39.686<sup>2619.3</sup> Intersect Doris 1/4 line North - N to E 89° 05' 25"  
(37.649<sup>2616.8</sup> at L N to Doris Centre Sec. (15464)  
2:343)

40.30 old trail by N East S.W. = 2660'

40.392 hub + turn L E to N to Doris Centre Sec

(2665.97)

72° - 25'

2.458 ch  
(162.23)

40.307 Rt L N. 160.57' to Center of Sec. (Oct. 13<sup>th</sup>)

2660.26

(See page 47)

42.763 hub on hill

To Flamba for night

Sept. 14<sup>th</sup>

Fair

80-85°

3 Halls + car. Continue W. on above random

47.604 hub

52.50 "

55.30<sup>3030</sup> Rd.

55.75 Enter Open Marsh

(59.463<sup>3121.26</sup> at L N to 1/8 post

(23700)  
3591)

60.00 hub in

" + turn L N to E to post \*  
by Yaughan? 81° 29 1/2' 3.631 ch.

3946.78

59.80

at L N 3.61 + Set 1/8 S. Cor. (Oct 14<sup>th</sup>)

3960  
3906  
13.2

Drive 4x5" pitch post 22.2' West of post found.

Mark  
y. Pine 16° S 69 1/3° E  
dy Pine 14 S 35 1/4° W

45.0 feet.

24.8 "

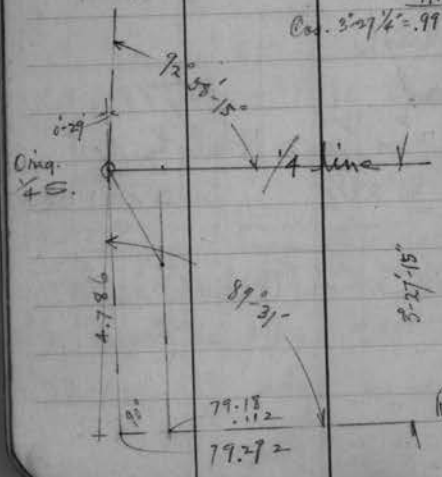
61.00 Leave Swamp = 4026  
 63.074 hub in old trail. " 62.9 X8 + \$N.  
 68.54 hub

79.18 hub (at Davis rec.) + at L N. 3.084  
 Hence at def L (L)  
 ① 3°47½' ② 7°32' ③ 11°17' 346'  
 1706

To Post at Orig ¼ S.  
 No evidence of birch but the Hemlocks  
 is a very good specimen - still alive  
 Scrubs wastes all plain.

Course to Hemlock is O.K. with 3°30' var <sup>turn</sup>

∴ 79.292 at L N to Orig ¼ S. <sup>315.48'</sup> 4.786



79.292 = 524208  
 77.436  
 Cos. 3°27¼' = .99819 True length = Tan. 3°27'15"  
 .06036  
 Correct N. punch.  
 x 37,641 = 2,393 @ E  
 x 19,817 = 1,196 @ W

Davis Rec.  
 77.18 full 4.585 = .05784 Tan  
 3°15'35"  
 79.18 ÷ Cos. 99853  
 = 79.312 True length  
 79.426 (M) and  
 79.37 1/246 average  
 .001503 " per ft.

North on random course from West Quarter Cor.  
 Var. 2°00' E.

Def L (R) from last hub  
 ① 4°-14½' ② 9°-29½' ③ 12°-45'

4.419 hub  
 7.33 " on bank of Squirrel Lake  
 " bears N E + SW

Note - To change this line (Course N 0°-24'-50" E)  
<sup>500 ft. 26.2'</sup>  
 to be a continuance of corrected Sec. line S of ¼ cor.  
 (Course N 2°-25'-20" E)  

$$\begin{array}{r} - 24 \text{ } 50 \\ 2 \text{ } 00 \text{ } 30 \\ \hline \end{array} = \text{Move } 16.96 \text{ (257 ch) E. at rt } \angle \text{ from } 7.33$$
  
 7.334

7.33  
 + .34  
 7.67 (at 4<sup>th</sup>) hub on beach for Δ  
 (506.22)

(See page 53)

Sept. 17<sup>th</sup> (PM)  
 3 Halls + car. (Locate W/8 on 1/4 line page 26 \*)  
 Run North on Random from Dorris Centre S.C.  
 Def. L from Sta. 40.392 (pg. 26)  
 ①  $17^{\circ}56'$  ②  $35^{\circ}50'30''$  (17-55-15) ③  $53^{\circ}47'$  (17-55-40)

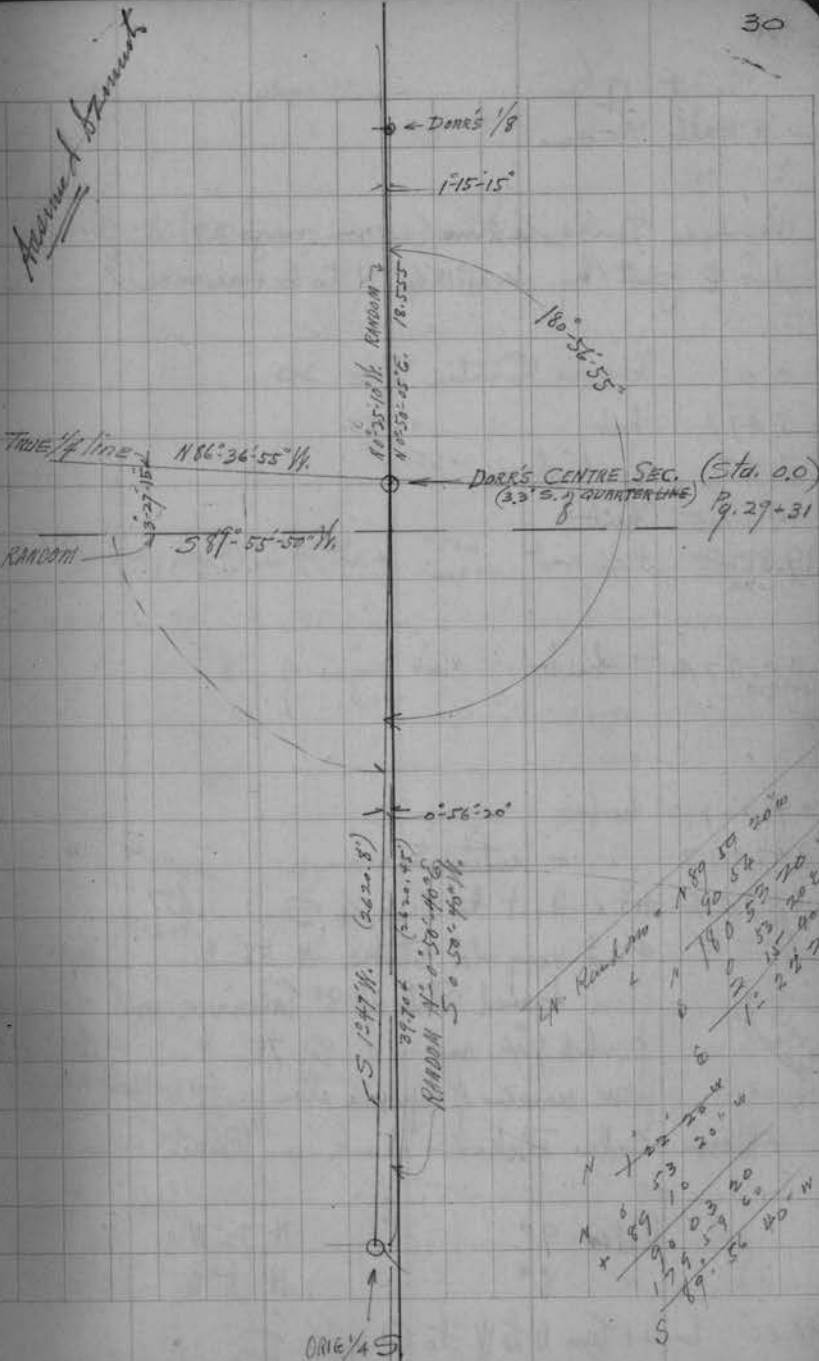
0.0 Pitch post at Dorris Centre  
 7.263 hub  
 13.895 "

(18.551) at E. to location of Dorris 1/8 by 9 lks from his BT.  
 Remains of old stake 406  
 18.622 hub + Run Sta E. to Dorris 1/8 S.  
 $80^{\circ}22'$  412

Def. 2 (L) to (B) 429  
 (283.14)  
 ①  $18^{\circ}29'$  ②  $36^{\circ}58'$

At B def. 2 (R) to (A)  
 ①  $33^{\circ}43'$  ②  $47^{\circ}25'30''$  (33-42-40")  
 ③  $101^{\circ}08'$  (33-42-40")

$\frac{406}{18.551} = 21.9$  correct & per ch.  
 Tan.  $1^{\circ}15'15''$



Sept. 19<sup>th</sup>  
3 Halls + car.

Windy. 40°

Produce Davis' line (as run page 29) S. from  
his E post (by  $\angle 1^{\circ}15'4''$  N to E + reverse).

0.0 Davis Centre Sec. 20

5.477

hub

43.48 W.

7.85

E highway = 650

84.28  
76.0  
76.68

14.065

hub

19.812  
(1307.6)

at nest  $\frac{655}{7326}$  + net  $\frac{1}{8}$  S. (See page 48)

20.974  
(1324.28)

hub

no signs of  $\frac{1}{8}$

29.701

hub

34.097

+ enter Swamp

39.704

(2620.45)

at nest to Orig  $\frac{1}{4}$  S.

Find very old stake N  $58^{\circ}$  W

from burned stub of 8" Tamarac with old

scribed  $\frac{1}{4}$  and S  $78^{\circ}$  W

from remains of spruce stump. (as per foot notes)

Drive

Cedar stakes + Mark (Pocket Compass)

Cedar 9"

N  $72^{\circ}$  W

.70

" 8"

N  $5^{\circ}$  W.

.592

40.00

hub + turn N to W to Orig  $\frac{1}{4}$  S.

①  $65^{\circ}32'$

②  $65^{\circ}35'$

.715 ch.



33

Sept. 20<sup>th</sup> Overcast 40°

3 Halls + car.

Run West on Random from Orig S<sup>1</sup>/<sub>4</sub> cor. Sec 20  
following blazes. (S 87° W with Var of 2° E) Mag.

Turn L N to North with random Quarter line.

① 91° 32' - ② 183° 04' ✓

0.0 Orig. 1/4 cor.

4.715 hut on swamp island

8.50 leave Swamp (Gov. Rec.)

8.67 hut

12.607 hut

15.591 "

(1325.3) 20.08 full ~~X~~ <sup>(200)</sup> .338 S of old 1/8 post

25.00 E. wheel track of rd. 1650'

27.00 Enter Swamp  $\delta = 178'$ 

30.22 leave " 1995'

32.05 hut

34.008 "

39.743 hut + Turn N to N to fence corner  
47° 36' 1.21 ch.

40.22



Sept. 22<sup>nd</sup> Intermittent showers 50°  
 Ray + Marshall.  
 Run E. from South Quarter cor. on Random  
 def = (R) from random west (page 33)  
 O 3°26' E 6°53' O 3°25' @ 6°50'  
 0.0 Orig 1/4 S.  
 4.64 picket  
 18.50 leave swamp. NW + SE.

19.00 + 2 ch. dops 13°35' (Cor. 972) = .056

22.755 poplar string +  
 22.79 picket move S. .0357 cl. to =  $\begin{matrix} 3 & 30 & 55 \\ - & 3 & 25 & 30 \\ \hline & & 05 & 25 \end{matrix}$

30.807 hub overlooking river  
 Push picket line down wooded slope  
 + onto open marsh.  
 Find old post lying down  
 about 5' N of line. also remains of  
 other post

Note - This is without doubt the Sec. Cor. referred  
 to by B.F. Dove in his "The Surveyor's Guide"  
 (page 129). " States he found both trees  
 about 17 rods west of the corner stake lying in  
 hay marsh and that he found the  
 hole the stake originally stood in.

Sept 23<sup>rd</sup> 1927 Fair 65°  
 Ray + H.C. + car  
 Continue transit line from yesterday.

35.615 opposite old bearing tree down scribe marks  
 (about .03 1/2 N of line) visible

37.897 fall .065 S of Orig. Sec Cor. (Pipe)

Drive 5' pitch pine post + 1 1/2" x 40" Iron Pipe  
 with coupling on top and mark  
 (Pocket Compass Bearings)

N. Pine 14° N 22 1/2° E.

Y. Pine 9° N 78° W.

3.345

3.08  
 202.2

Note - We find both trees, both with scribe marks  
 but both lying loose upon the ground. The  
 apparent location of the north tree meas. 4.23  
 from the old stakes, but in view of Dove's  
 statement we decide to accept the stakes  
 as the Orig. Monument.

.00163. 1m 0.05-35

(PM)

(1/8 cor. found (page 33) Tie in with Transit  
 20.085 at N to Cor.  $\begin{array}{r} .335 \\ \times 2 \\ \hline .670 \end{array}$   
 40.170

Reference pt. 1/8 post (N. 2° E)  
 Y. Pine 15" N 71°-40' W 1.19  
 Y " 15" N 69° E. 1.305

Found 2 tamaracs Scribed - looks like Dove

Now it = N. from Sta 40.17 (page 33) .67  
 This point falls .046 E of the stake hole  
 previously noted. This stake hole is 2 feet deep  
 + contains rotted wood. Whoever set the 1/8  
 corner East could easily have differed

The .023 with our meas.

Turn E to N to hole 94° .661 ch.

∴ 40.216 Pt = N to Sec. Cor. .659 = .01638 Turn  $\begin{array}{r} .016 \\ \times 100 \\ \hline 1.638 \end{array}$   
 + .005

40.221 true line

LATER  
 Sept. 26

A lat. + dep. calc of SW 1/4 gives  
 an error in lat of 1.10' and an error of dep. of 2.7'  
 I conclude an inaccuracy in our Meas of  $\$ 5N5W$ .

By doubling our Meas. on  $\$ 8E5W$  is:

2651.6 reduces error in dep. to 1.3 and  
 makes Course of 44° 2' 24" 50" E. ✓

$\begin{array}{r} 20.085 \\ + .003 \\ \hline 20.088 \\ \times 2 \\ \hline 40.176 \\ \times 66 \\ \hline 2651.6 \end{array}$

Drive 1 3/4" x 30" Iron Pipe in old stake hole +  
 " 4x4" pitch post on E side " "  
 Marks (N. 2° E.)  
 Y. Pine 6'  $\$ 54^{\circ} W$  .16  
 Y " 9'  $\$ 50^{\circ} 20' E$  .604

A large poplar in new fence cor. with a  
 heavy overgrowth covering some surveyor's  
 scribe marked br. N 56°-20' W 463  
 + fence corner.

A 9" poplar with overgrowth + heavy facing  
 br. S 68°-40' E. 42 + fence cor.

Depression where large Aspen once stood  
 br. N 15 1/2° E. .77

Calc for 44 as 86°-47'-50" E to N from random  $\$$   
 Turn to picket N. (Pr + 44)

① 86°-49' ② 173°-38 ③ 260°-25 1/2'

86°-47' 50" calc. to  
 01' 10" correct E. ④ 293  
 .00324

(41.953 ch. cal.)

Sept. 24<sup>th</sup> 1927 Fair 60°  
 3 Halls + car  
 Resume Random N. from Orig. SW cor. Sec 20

0.0 Iron Pipe @ Corner

4.00 cross wire fence to E of North

7.06 " " " West.

9.53 hub

17.282 "

20.966 at N. 033 + set  $\frac{1}{8}$  S. Patch Post + Rocks.

1383.76 Mark N. Pine 6" N  $5\frac{1}{2}$ " W 515 ch.  $\frac{21.067}{.033}$

Y. Pine 7" S  $10^{\circ}40'$  E. 545-  $\frac{241.932}{20.966}$

21.07  $\oplus$  12" turn pipe E + N.

21.50 hub

24.33 "

37.143 Intersect random  $\frac{1}{4}$  line at Sta.  $\frac{77.18}{+.26}$   
 + Turn  $\leftarrow$  E to S.  $\frac{77.44}{.033}$

$\textcircled{1} 92^{\circ}35'$   $\textcircled{2} 185^{\circ}09'$   $\textcircled{3} 277^{\circ}45'$   $\frac{92-35}{2}$

(calc. 41.947)

41.932

2767.51

full 067 E of Orig  $\frac{1}{4}$  S. at  
 Sta. 0.0 on page 28

$\frac{41.932}{.0016} = \text{Turn } 0^{\circ}05'30''$

At Sta. 40.392 page 26 Turn N to E.

$\textcircled{1} 72^{\circ}25\frac{1}{2}$   $\textcircled{2} 217^{\circ}17'$   $\frac{72-25-40}{2}$  ✓

At. Davis  $\oplus$  Turn SW to S.

$\textcircled{1} 16^{\circ}37'$   $\textcircled{2} 49^{\circ}59'$   $\frac{16-39-40}{2}$   $\textcircled{3} 83^{\circ}18'$   $\frac{16-39-36}{2}$

At Davis  $\oplus$  SW to N

$\textcircled{1} 162^{\circ}04'$   $\textcircled{2} 324^{\circ}10'$   $\textcircled{3} 126^{\circ}14'$

$\frac{162-05}{2}$

$\frac{324}{2}$

$\frac{126}{2}$

$\frac{14}{2}$

$\frac{14}{2}$

$\frac{162-04-40}{2}$  ✓

$\frac{1}{8}$  S. of West  $\frac{1}{4}$  of Sec. 20

Oct 4<sup>th</sup> Fair to threatening.

3 Halls + car - rowboat -

find Orig M.S. across lake West from Jarque

Run med on a random (Var. 2° E.)

(def.  $\angle$  SW from line to Sta 2436 page 24)

8.54 ch. fall .225 S. of Orig  $\frac{1}{4}$  S.

(563.65)  $.225 \div 8.54 = .02635$  - Tan  $1^{\circ} 30\frac{1}{2}'$

Turn  $\angle$  S around lake (see sketch) in back of book

See Last Pages for sketch

Oct 5<sup>th</sup> Overcast. (AM)  $\frac{1}{2}$  day.

Same crew

Turn more  $\angle$  S + meas. base line 266.52'

Take boat + find orig Pt. on N shore Squirrel  
between Secs. 17 + 18. NE. tree not to be

found. Find new post (a poor stake) set

about 4 lbs. too far S. Clump of virgin

hemlock adjoins line on E. The hollow N on

cut out random (from N.) + verify Bennett's post by

Orig. trees at sec. cor.



Sunday, Oct 9<sup>th</sup> 1 hour. check  $\Delta$  angles (OK)

Tuesday, Oct 11<sup>th</sup> Overcast 55°

Ray, Marshall + H.C. (Keith + car)

Drive 1 $\frac{3}{4}$ " x 30" Iron Pipe with cedar plug on bottom  
at Orig. NE corner Sec 20. Bearings -

Birch now 14" bearing, old scribble marks but  
not mentioned in Gort. notes

	N 51° W	20.2 lks.
Birch 11" S.	10° W	21.2 "

Run S. on old cut out roadway  $\angle$  W to S from N. random

① 90°-55'	② 181°-48' (90°-54')	③ 272°-42' (90°-54')
④ 90°-53 $\frac{1}{2}$ '	⑤ 272°-41' (90°-53'-40')	⑥ 363°- $\frac{150}{90}$ (35°-30' 53' 52')

0.0 Sec. Cor. (Iron Pipe)

11.50 hub

20.00 hub  $\angle$  over

39.85 hub + Turn N to NW to  $\frac{1}{4}$  S. 1.643

① 70°-51' ② 141°-42'-30' (70°-51'-15')

Shanca def.  $\angle$  L  
 $\angle$  SE to W ①

18°-18'	② 323°- $\frac{24}{14}$ (161°-42')
161°-42'	
180°-00'	



37.31 at A. road to  $\frac{1}{4}$  Cor. 1.552 = .03748  $\tan 2^{\circ}15'46''$   
 length of line 37.341 = 2576.5

37.332 intersect random  $\frac{1}{4}$  line 1.553  $\frac{102.5}{6}$   
 from Post + line N to N

①  $89^{\circ}-07'-30''$  ②  $188^{\circ}-26''$

③  $267^{\circ}-29'-30''$  ( $89^{\circ}-07'-50''$ )

④  $85^{\circ}-50''$

$5445$   $50^{\circ}-189^{\circ}-10''$

Oct 12th Overcast. 3 Halls + car.  
 Run @ lot 3 from shore (B) Az  $95^{\circ}$  ( $85^{\circ}E$ )

205.6 feet

166.9 " just E of old rd. from NW SE.  $\frac{240}{26-3}$   
 $\frac{2263}{2663}$

631 "

1246 feet (Wards W<sup>ly</sup> from E road) Thence

$342^{\circ}25'$

$190'$

$336^{\circ}16'$

N 24 W

$171.2$

$359^{\circ}29'$

N 1 W

$85.9$

$270^{\circ}$

W

Sta 1174 on 660' line.

Reference

" "

Poplars 6'

$312\frac{1}{2}$

$57'$

W Pine stump 30'

$153\frac{3}{4}$

$14'$

$\frac{135.35}{103.87}$   
 $\frac{117.05}{117.05}$

Oct. 13<sup>th</sup> (PM) 3 Halls + can - Fair 60°

Set Center of Sec. 43.86'  $\times$  82°17'30" W  
 from Davis Centre ( $\approx$  3 to W from Random  $\frac{1}{4}$  line -  
 96°51'30"). This = 160.57 N station from  
 Sta. 9660.96 on E+W random (page 26)

Drive Iron Rod with coupling on top for  
 Centre. Large Pitch post on N side iron.

Mark Y. Pine 14" N 17° E. 11.5 ft.  
 W. " 14" S 61° W. 20.0"

(V. 26)

Run South to Road on true  $\frac{1}{4}$  line (50°50'40" W)

Centre Sec. 20

Acres - Oct. 25<sup>th</sup>

35.88	street
1.29	1
18.30	2
10.10	3
17.60	4
18.70	5
13.44	6
22.85	7
20.91	8
124.07A	

Rt - West from Sta. 19812<sup>ch</sup> (page 31) .655<sup>ch</sup> + act  $\frac{1}{8}$  S.

Iron Rod & poplar post + mark

Pocket Compass Rings

Y. Pine 9" S 27° E.

24.1 ft.

W Pine stump 25 S 82° W

32.0 "

Run West on random course of N 88°10'10" W by  $\angle$  of  
 99°01'30" N to W from random (run on page 31)

Oct 14<sup>th</sup> Same Crew - Continue same

90  $\frac{1}{8}$  cor.

122.7 hub - Marsh bro. NE & NW.

220.5 Centre Road

361.1 hub <sup>250.4</sup> post for corner of plat

696.5 "

958 "

1968  $\$$  road

1275<sup>+</sup> Centre open marsh.

1307.32 picket for temporary  $\frac{1}{16}$

1307.17 Set  $\frac{1}{16}$  Sec. Cor. in corner of swamp.

Drive 5" x 5" Pitch post + iron pipe. Mark

Y. Pine 28" S 28 $\frac{1}{2}$ ° E.

69.2'

Y " 15" N 86 $\frac{1}{2}$ ° E.

81.0'

Run S from  $\frac{1}{8}$  post on  $\frac{1}{4}$  line (page 26) thru sta. 1307.32

fall 0.3' ft. West of  $\frac{1}{8}$  S. or  $\$$

Oct. 15<sup>th</sup> Overcast. 3 halls + car.  
 Set  $\frac{1}{8}$  cor. <sup>etc</sup> on N. line (as on page 17)  
 Run S on  $\frac{1}{8}$  line (intermediate course) S  $1^{\circ}06'30''$  W.  $\approx$   
 $\pm 91^{\circ}05'50''$  E to S of random

30.00 Stake

80.00 " for S E of lot 1

Shower - thru lot 2

427.1 stake 95' NWly from  $\Phi$  rd.

Now at intersection of W. line road & with Sec line <sup>(183' 6" / 8)</sup>

(175° 50' N 80 x lot 2

(171° 57' Road  $\perp$  S. (Pass 2' E of lot 2) Meas 8' from N 80 x

200° 04'

227° 43'

247° 06'

(stationary  
449 road  $\Phi$   
25' from

231

122.3

151.8

184.0

At 81.6 Cross  $\frac{1}{8}$  line at sta. 427.1

207° 22'  $\frac{1}{2}$

269° 55'  $\frac{1}{2}$  ✓

To Sta 1174 on  $\Phi$  2

126.9

Make intensive search for M.C. #35 on W 20  
 Old cruiser's mark on pine about 10 or 12 W 20 E.  
 of where an random hit taken is only evidence of  
 old line. Remains of birch + maple stumps  
 line the shore under covered off bank at  
 this point.

184.0  
 81.6  
 102.4

Run lot line (4+5) by Az 127°  
 4 from A on island N to S  $\odot$  155°-14-30'  
 0.0 hub on shore  
 176.1 "  
 306.7 "  
 507  $\oplus$  Old Road N+S  
 845 hub  
 1200 " 25' from  $\oplus$  road.

Oct 17<sup>th</sup> Ray, Keith + M.H. + car.  
 Run lot line (5+6) from shore on Az of 159°-07-30'  
 231 hub .3  
 464.4 " .64  
 820.3 " 1.14  
 1074 Fall 15' N of Centre of Dec (iron). Correct same.

Meas. E on true Quarter line  
 367.8 hub  
 +139.8  
 507.6 hub 25' W of road  $\oplus$   
 Meas. S. from centre on true 1/4 line  
 628.3 hub 25' N of  $\oplus$  road.

Oct 18<sup>th</sup> Fair. Ray, M.H. + K.H. + car.  
 Run lot line 6+7 from lake on Az of 166° (S 14° E)  
 0.0 Sta. J page 22  
 66.0 hub on back of hill overlooking lake  
 494.0 " S end of pole flat  
 895.8 " across swale on pole flat.  
 1074.5 intersect random 1/4 line (run on pg. 25-26)  
 85.3' E. of sta. (47.604 ch. = 314.82)  
 Intersect = Sta. 3056.6'  
 2 W to N  $\pm$   $\odot$  76°05'  $\odot$  152°10'  $\checkmark$

1324.6 hub  
 1600. " "  
 1766.5 stake 25' from  $\oplus$  road.

(PM) Run lot line 7+8 from shore on Az of 175°  
 0.0 hub on beach (L. page 22)  
 12.6 stake  
 37.6 hub  
 151.5 "  
 532.9 " offset 4' W to pass y. Pine.  
 628 said " " 9"  
 988.4 " return to true line  
 1016.2 intersect random 1/4 line  
 1212.1 hub



1360.2 huls overlooking swamp to SW  
 1525± E road hrs NW + SW  
 At 1360.2 point of land from SE.  
 hrs. S 43 W

1816.5 huls - point of land from NE hrs. N 27° W. ±

2148.4 Intersect - Corrected 1/8 line at  
 Sta. 749.1 turn W to N.

① 83° - 12'    ② 166° - 24 1/2'

Oct. 30<sup>th</sup> Fair - windy 3 Halls + car. (See page 54)

Set MC #35 on N. Sec. 20 by an bearing  
 course of all courses run on Sec. 20.

ie. N 1° 35' - 10° E.

N 25° 40' E course of road NW  
 10° 09' 30" with rainbow

Move E. at sta. from 7.33 page — 7.78 ft.

thence W to N. 91° 09' 30" 365  
 = 7.70 + set post  
 7.695  
 (507.7)

Mark

W Pinch 7"	S 1° W	.121	ch.
W " 7"	S 48° E.	.19	

This line falls about 2' E. of old pine slab  
 with very old flange + some criss marks.

① 91° 39 1/2'    ② 183° 30' 30" / 91 - 40 - 15"

① 91° 42'    ② 183° 22' = 91 - 41'

③ 275° - 03' (91 - 41'  
 123 91 - 37 52

N 89 56 40 E.  
 + 91 40 25  
 181 37 05  
 183  
 5 1 37 05 W.

89 56 40  
 91 41  
 181 37 40

Run N from 1/8 S (west of centre) by def. c NW of 0° 25' 25"  
 = N 1° 12' 55" E.  
 Other post hrs. E. 22.2 feet

-56.0 N. end Swamp, 14.85  
 0.0 1/8 S.

631.4 huls + 1/8 in to (N on page 22) 55° 30'

62° 52' (M)

+ 180

272 50°

\* MC Mark.

y. Pine 10° N 70° E.

y. " 16" S 55° W.

55.3 feet

14.3 "

40 15  
 37 30  
 77 45  
 34 15  
 37 52

91 40 25

9.4 W  
 7 feet

48.95  
 from number

(PM) Meander W Road Beginning at SEx lot 7  
# AZ. feet

	Mag.		
0- 271°-50'			
1- 3°-41'	N 3° E	316.5	} 7
2- 7°-13½'	N 6½ E.	157.3	
		(473.8)	
		To 6+7	
		(346° 03½ road line NW)	
		166° 03½ v	
3- 22°-29'	N 23° E.	185.7	} 6
4- 78°-01'	N 78° E	152	
		(337.7)	
		To ¼ line. 0°-55 v	

SEx 5 N ¼

0- 273°-24'			
1- 40°-38'	N 40¾ E	248	} 5
2- 76°-02½'	N 76°-10 E	148.6	
3- 13°-44'	N 13¾ E.	208.7	
		605.3	
		307° ✓	
4- 2°-18'	N 2¼ E.	207.9	} 4
5- 53°-50½'	N 53° E.	392.5	
6- 20°-13'	N 20½ E	97.5	
7- 357°-57'	N 2° W.	230.	
8- 21°-25½'	N 21° E	137	
		1064.9	
		274°-58'	

57 Cont lot 1 6-39-5

for J. H. Bacchle, Dorchester Ave. chis.

July 24<sup>th</sup> 1928  
 Ray, Kirk & Marshall  
 Set up over Bennett's post for Orig S&X6  
 + (with 2° 40' var) check the W Pin stump <sup>OK</sup>  
 Several large aspens once green when called for

Run most on corrected line found  
 = N 84° W with var. of 3° 20' = to E.

332.9 hub found

Corrected N.  
6.05

898.9

" " base of old mast <sup>16.23</sup> to ~~base~~

946

⊕ Bacchle trail N&amp;S

1000.

peg not lined in

1200.

hub

21.79

1227.8 at N. to Bennett's post (MC) 22.31

20.39

1340.0 hub on shore bears ENE + West  
 turn E to NE to MC found 112° 12' 114.9'

1541.3 hub across bay - meas. in water  
 Rim @ 2:45 PM

July 25<sup>th</sup> 1928 - begin @ 10:30 AM  
 H.C. Ray & Marshall - continue same line

74 day

1677.65 hub

30.47

1789.55 "

32.50

1981.9 tally stake found

2137.5 hub

38.82

2380.0 "

43.22

2617  
 W  
 45  
 65

2551.5 hub + turn def. R. to Orig MC <sup>46.33</sup> #51  
 on W. shore 2° - 21' = 40'

(2617 water - bears ENE + SW

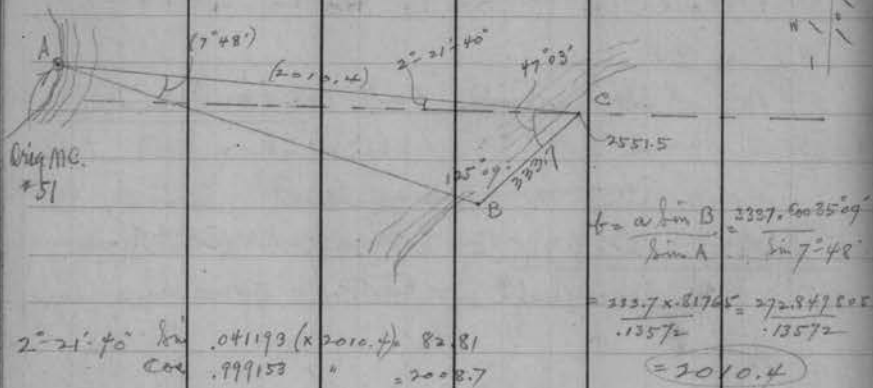
@ 2551.5 lay off base line SW 333.7 ft.

← W to SW from MC = 47° 03' (6 times)

← NW to NE = 125° 09' 6'

@ 2551.5 turn W to N to Bennett's MC. 80° - 07' 49.5'

@ 2560 at  $\angle$  N to Burnett's MC 48.77' 46.50'



2551.5  
+ 2008.7  
4560.2 at  $\angle$  N. to MC #51 82.81'

45602/82.81 = .01816  
Correct N. 1°-02'-25"

Make search with boat for stumps on E. shore. Seems to have been old log landing. All cleaned.

In order to get the Govt. MC. on E. side of lake the line would of necessity be 100' or more S of our random at the lake. Beaver dam has the present level much above old level.

Will have to correct to MC. 51 as Burnett ended by doing. For some reason we will fall 2.3' S. of his MC. at 2560.

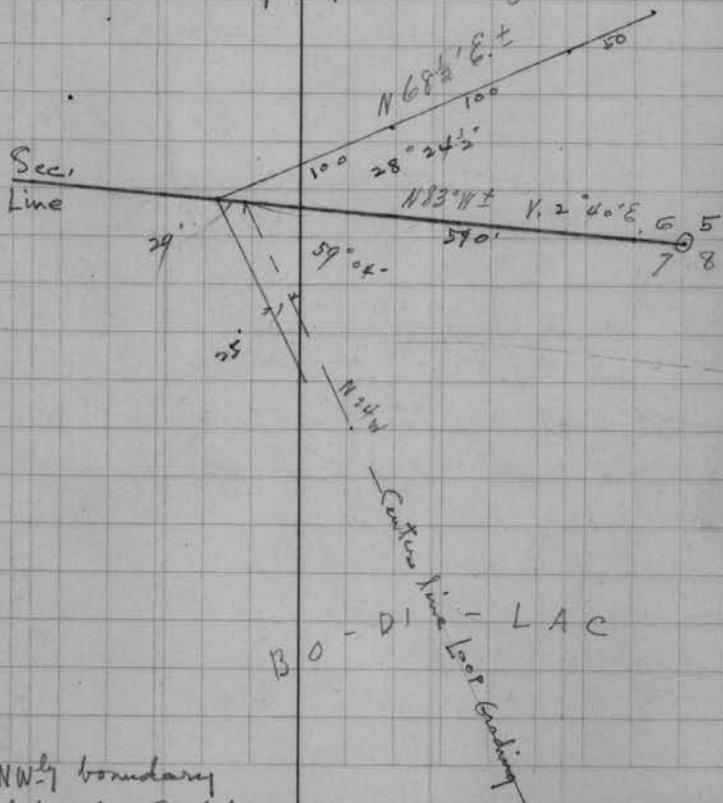
G-39-5

August 24<sup>th</sup> 1928 - Friday.

H.C. Ray + Marshall 1/2 day.

Cut out corrected  $\pm$  Sec 6 as far as first MC 1227'  $\pm$

Look for stakes defining Loop Drive in BO-DI-LAC  
Failing to find definite boundary, line out  $\pm$   
22' grading + produce NWly to  $\pm$  Sec 6  
Intersect said sec. line. 590' W. of Sec. Cor.  
 $\angle$  E. to SE. 59°04'



Stake NWly boundary  
of a drive in Govt lot 1

250' as shown





Survey of Govt. Lot 3 in Sec. 28-39-6  
with certain exceptions  
for Fred Everhardt - Park Ridge Ill.

hook up deeds and find he owns Lot 3  
Except  $\frac{3}{4}$  miles + bounds descriptions covering the  
South 300' of the lot and except a miles +  
bounds desc. covering a tract in the NW corner  
of the lot 200' on the shore + 350' on the North line.

Sent to Madison for notes - copy orig. plat  
on file in Rhinlander. Neither mentions a  
Supplemental Survey of the Islands. Notes and  
plat of the latter (Supplemental Survey of 1903)  
later received from Washington D.C.

Yaughn had subdivided the island about 4 years ago  
and had done some work for U.S. Coy 2 " "  
setting the Co. to Secs. 28-29-32-33  
providing N+S + E+W, bringing it in the  
edge of water on SE shore of island.

In both surveys he ignored the supplemental  
Govt. Survey of 1903 but we find all 4 U.S.s.!

Note - In the following work, the East line of  
Sec. 28 is assumed as meridian and all  
courses are on that basis, being determined by  
angles ( $\pm$ ). The magnetic var. of said E. line  
is found to be  $3^{\circ}48'E \pm$ .

The bearings to corners are accurately measured  
but the courses to said bearing trees are not  
reduced to a common var. Some being  
noted with pocket compass.

October 30<sup>th</sup> 1928 fair 30° @ 7 AM

H.C. Hall, Ray H. Hall, Marshall Hall + F. Ackley

- ① Set this corner, NW x 28, by S 68° W ± from Orig. pine stump. Someone has placed the pine B.T. slab in a hollow aspen facing the corner and set an iron strip for corner incorrectly. The side of the stump fits the B.T. slab OK. The evidence of the aspen is not clear. (V 3° 10' E) 11'
- We find old stake hole S 66° 10' W .166 from the stump + place corner here.

Drive dry tamarack post and the 3 1/2' strip of iron found. Mark (Var 3° 10' E)

Y Pine 20"	S 26° E	1.006 =	66.4'
W. " 28"	N 28 3/4° E	1.52 =	100.3'

Run Ely on traverse in cut out (Crooked) road

② S 86° 26' 30" E. ch  
19.005  
at 5.75 hub.

③ S 88° 22' E. (def = L. 155 1/2') 13.066

④ S 85° 25' E. (def = R 25 1/2') 38.707

at 7.881 Turn W to N 84° 37' 20" .594 ch.

⑤ and set 1/4 S Y Pine post + J.P. feet

B. Pine 8"	N 39° E	.43 3/4 =	28.9'
B. " 9"	S 13° E	.844 =	55.7'

Nov. 19<sup>th</sup>

Pocket Compass bearings. Trees marked  
This places 1/4 S at mid point of north line

=	179.83
*	39.915

⑥ 8.172 hub  
16.27

⑦ 27.888 Turn W to N 85° 01 1/2' 1.399 ch.  
and set 1/8 post Pine post (split in driving)

⑧ Nov. 19<sup>th</sup>

B. Oak 5"	S 35° E	.667 =	44.1'
Y. Pine 3"	S 30° W	.816 =	53.9'
N " 9"	N 50° W	1.38 =	91.1'

Pocket compass bearings. Trees marked 1/8 S BT

30.00 hub

38.707 " lay off base SWly 26.43 for Δ  
to sec. corner in wet  
open swamp.

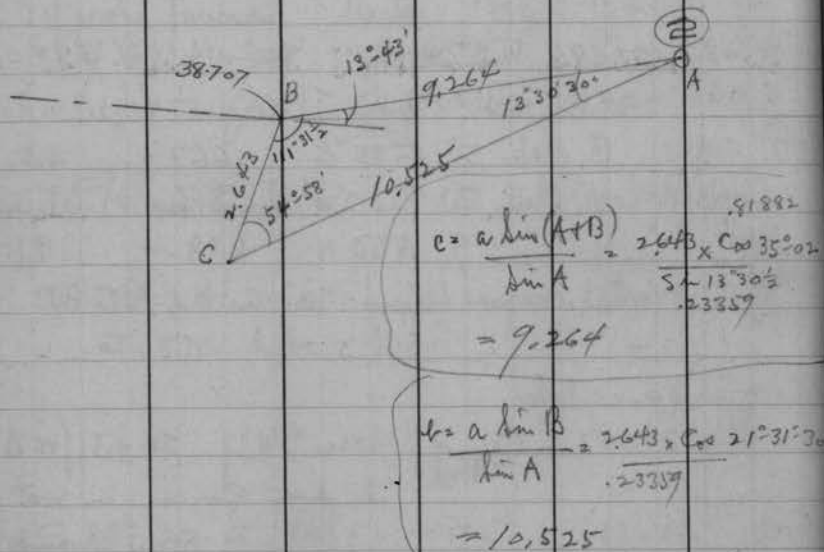
⑨ S 80° 52' E. (def = L 13 43') 9.264 (calc.)

To Orig corner to Secs. 21-22-27-28  
as set on next page

- Set NEx 28 by record dist from the  
 ② 2 orig Tamarac stumps which are in  
 good state of preservation. Also one  
 other Tamarac marked in same fashion  
 (but no BT) not called for in notes. This  
 tree is about a rod SWly.

We drive a green tamarac post + find there  
 somebody's old post with top rotted off.  
 Courses check closely by pocket compass.

Old bearings { Tamarac 7" N 77° E .30 = 19.8'  
 " 7" S 49° E .38 = 25.1'



November 1<sup>st</sup> 1928 Cloudy 30° 40°  
 Ray, Marshall, + Frank Ackley

Dig in center of highway for some evidence of  
 SEX of 28. There is a line blazed N+S and  
 2 trees marked. Difficult to determine just  
 where random line west started from.  
 The two pines called for must have been  
 grubbed out of the road. An old rotted post  
 lies north of road.

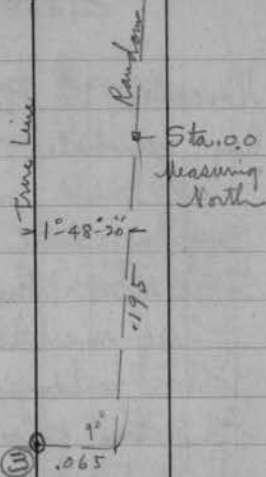
Set a temporary peg in middle of road + run North  
 on random. (V 2° E) See next page →

Note - later find Iron Bolt in S. ditch and  
 Stewart M<sup>c</sup> Coy furnishes us Vaughn's notes  
 on same. Check O.K.

- ③ We drive 1/4° S.P. + bolt (found) inside the pipe.  
 Tie to Vaughn's trees as follows.

Y Pine 7" N 30° E .77 = 50.8'  
 W " 9" S 3° E .556 = 36.7'





∴ Sta. + .195 = dist N. of corner

- .195 at  $\angle$  W. .065 to Sec. Corner  
 0.0 our Temp. hub in  $\Phi$  road  
 7.562 hub fall 6 or 8' W of old blazed Aspen

25.246 hub

36.24 "

(= at  $\angle$  west from 39.448)

39.463 Turn N to W  $90^{\circ}38'20''$  (to run N  $88^{\circ}50'W$   
 on true  $\frac{1}{4}$  line) @ 1.315 ch. drive pine post  
 for  $\frac{1}{4}$  S. N  $3^{\circ}48'E$  + 9 P.

(6) Nov. 17 B. Pine  $3^{\circ}S 23^{\circ}20'W$  .444 = 29.3'  
 B. "  $2^{\circ}S 49^{\circ}E$  .285 = 18.8'

On SE rim small pot hole  
 No other trees near.

These Jacks merely marked  $\frac{1}{4}$  S B.T.

continued -

41.012 hub

? "

59.182 " on shoulder of hill overlooking  
 Papke lake? + clearing

Turn  $\angle$  S to NW to hub at 38.707 on H.  
 $147^{\circ}18'20''$  (3 times)

"  $\angle$  between two A points (2,643 apart)  
 $5^{\circ}16'20''$  (6 times)

59.273 Turn  $\angle$  N to W.  $90^{\circ}05'$  (for  $\frac{1}{8}$  line N  $88^{\circ}16'40''W$ )

@ 194 drive Tamarac post on shelf  
 above lake (+ mark trees  $\frac{1}{8}$  BT)

B. Oak  $8^{\circ}N 7^{\circ}E$  .402 = 26.5'

B. "  $3^{\circ}S 6^{\circ}E$  .609 = 40.2'

(= at  $\angle$  west from 59.27)

69.00 hub.

November 2<sup>nd</sup>. Fair.

H.C. Hall. Ray H. Marshall H + F. Ackley. continued

76.743 hub + turn def  $\angle$  L to flag at (2) Sec Cor.  
 + 2.163  $47^{\circ}30'15''$  (twice)

78.906 hub + turn S to W to (2)  
 $94^{\circ}08'30''$  (3 times)

∴ 79.092 at  $\angle$  west to corner 2.564

length on true line 79.326

79.092     2.564  
 + .195     - .065  
 79.287     2.499

.03152  
 = Tan  
 $1^{\circ}48'20''$

2.564  
2499 → Sta 79.092

2/79.287

39.643

.195

Sta. 39.448

2/2.497

+ 1.2495

1.315

39.663

1939

Sta 57.27

4/79.287

19.8217

.195

59.465

.195

Sta 59.270

79.287

79.326

1/4

1.315

Sta 39.448

4/2.499

.6247

.195

1.874

.065

1.939

North 39.663

Bearing  
N 10° 48' - 20" E

Sta 0

.195

39.665

This results in an angle of  
92° - 16' - 45" S to W  
of connected lines at N 8° X 25'

November 2<sup>nd</sup> continued

Search for N. 1/4 S 28 but find no evidence.

At Orig. MC # 39 on North Shore Blue Lake  
find a 3 1/2' strip of iron set incorrectly.  
The Black<sup>(NE)</sup> pine is a very good specimen  
but the tree northwest is a Y pine and cut low.  
There is evidence of a boxing however.  
(The survey of 1903 reported this tree as "destroyed")  
Drive dry Tamarac post (+ iron found)  
by record distance from the 2 trees.

Orig bearings.

(R) B. Pine stub N 71 3/4° E .45 = 29.7'  
Y. stump N 47° W .50 = 33.

Mark new bearings

Black Pine 9" N 29° W .115 = 7.6'

" " 11" N 47° E .11 = 7.25'

This comes on sandy beach .07<sup>±</sup> from water.

Transit in with ① over ridge North.

9.638 ch = 636.1'

At ① turn S to E to ② on traverse of N. line.

86° - 16' - 20"

+ 86 16 20

+ 1 16 45

∴ ∠ of connected lines E to S at ① = 87° 33' 05"

November 3<sup>d</sup> 1928 fair

3 Halls + F. Ackley.

Get in Vaughn's random \$28 (at about 47 ch from ③) Produce this east meas. E. from hub (14½° N. of 40° tally found)

ch

18.00 hub in field

40.00 peg in road

40.054 on temporary hub for sta. 00 on E

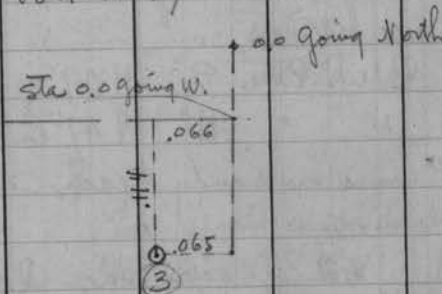
Intersect Random \$ .08 ch S. of 0.0

Turn ← W. to N 90° 44' 50" (4 times)

(Find the iron bolt as noted on page 68)

Set at Sta. 00 on E. Reverse S.

def ← SW to bolt 18° 24' 20"

∴ Trial random Sta. 0.0 going W.   


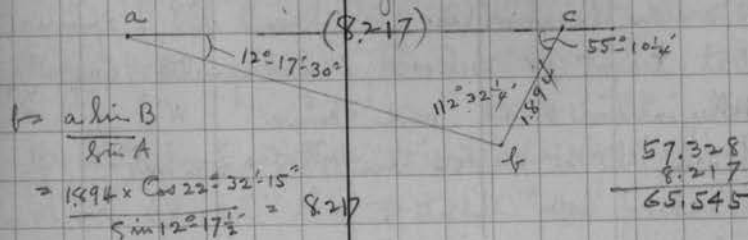
Note tally (meas. E from) as 40.054 + continue West

54.492 hub

57.328 "

57.527 Fall .01 ch N. of Vaughn's MC.

At 57.328 Δ to Vaughn's MC on west side bay.



65.545 Vaughn's MC. on on random

Franks Ackley finds Orig MC #40

The NE stump is in bad shape but with a well preserved notched slab. The SE stump bears an excellent "MC" down near the roots (in place of a "BT")

#40

V

Drive pitch post and broken parts of a stove.

Bearings	Var.	3° 10' E	ch	
Orig stump	N 68° E	.17	=	11.2'
" "	S 11½° W	.21	=	13.9'

New bearings

W. Pins	18" N 34° E	.407	=	26.9'
W "	11" S 9¾° W	.356	=	23.5'

This corner stands 24 + 22 = 46 E of shore  
 See page 98

@ 57.328 Turn W to SW to #40

66° 07' 1.547 ch

∴ at sta. 57.954 at ← S to #40 1.415 ch. = 93.4'

75

S. line 28

Re-run Random \$28 attempting to keep within Vaughn's line.

Set target  $\Phi$  over (3) line up with Vaughn's tally marked 50.33 and come

OK with tally at 40.054 or 15° S from hub

1" N. of hub 48.575

11" N " 54.492

16" N " 57.328

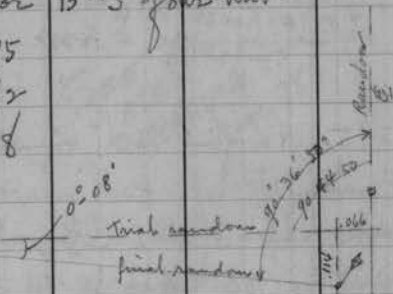
$90.44 \pm 50$   
 $75.36 \pm 50$

Continue west or cut out random

65.545  
+ 2.175  
67.720 hub on neck

@ 67.72 turn W to SW to Orig MC #42  
75° 55' 1/2 1.65 ch.

#42 This corner agrees within .015 of dist given in summer of 1903 from Sec Cor in lake and agrees for course + dist from a birch stump (NE). Also faces 2 old BTs that look like Davis. The orig 1883 notes call for a birch S 8 E 141 but this falls across a bay. The US survey of 1903 reports this corner is as described.



S. line 28

for McCoy 76

Drive 2 1/2" x 1 3/4" I.P. and Sawn post. Marshy.

Bearings { Old Birch stump N 9 1/2° E .53 = 35.1'  
W Pine stump 13" (Dors?) N 52° W .37 = 24.4'  
W " " 15" " N 25° W .398 = 26.3'

BS on #41 and set stake 55' west (def - NW 1° 21' on true line)  
∴ at Sta. 68.121 rt ← S to MC #42 1.60 = 105.6

(U) @ Sta. 66.043 turn E to SE. to MC #41  
41° 54' 2.278 ch.

This corner identified by the remains of two birches as follows. @ 3° var.

Birch N 43° W .23

" S 29° W .17

Also a line blaze just west of corner about 6' grub out 2" maple + put in 1 3/4" I.P. and sawed post

New bearings (3° 55' var)  
W Pine 10" N 83 1/2° E (marked) 15.7'  
W " 16" N 32° W " 25.

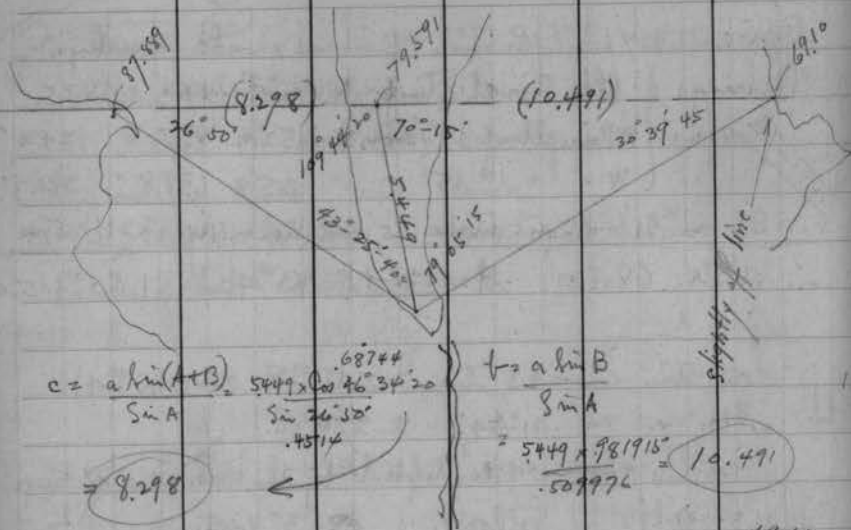
Set square stake on line 14' E on shore (for McCoy)

∴ at Sta. 64.347 rt ← S to #41 1.521 = 100.4' ch.

69.023 ± rt ← to Vaughn's MC .044 ±

69.10 set flag for Δ to island





Sta 77.576 st = S to Sec. Corner in lake 1.575  
 as finally determined by finding that record  
 med. from 3 M.C.s tally

Sta. 77.693 st = N. to S.M.C. on  $\frac{1}{4}$  Sec 28. .642 ch. #33

@ Sta 77.771 fall .038 ch. N. of Vaughan's Sec. Cor on shore.

@ Sta. 78.166 st = S. to S.M.C. on  $\frac{1}{4}$  Sec 28 1.624 ch. #31

Sta. 79.782 st = S to S.M.C. on  $\frac{1}{4}$  Sec 28 1.728 ch. #32  
 → line resumed page 81

Description of the four orig. Special Meander Corners  
 Established by U.S. Deputy Surveyor Nutter in 1903  
 in Supplemental Survey of island.

I have numbered these S.M.C.s for convenience (in notes)  
 as #1 #2 #3 #4 in the order set by Nutter  
 according to his notes.

#3 Find the birch dead but in good condition -  
 all the figures plain. The hemlock was cut low  
 but shows evidence of a boxing. Set the corner  
 by record list, from trees. Courses at 5° Var  
 do not exactly agree. This brings corner in  
 roots of W Pine stump. Find the orig marked  
 post lying down against stump, apparently  
 never driven.

Drive 24" x 1 3/4" SP + Sawn post (along side) 4" x 4"  
 Bearings with 5° Var.

Old	{	Birch	S 43 W	.18 =	11.9'
		Hemlock	N 16 W	.29 =	19.1'
New	{	B oak 5"	S 24 1/2° W	.125 =	8.2'
		W Pine stump 24"	N — W	.59 =	38.9'

Description of S.M.C.s on Island  
- continued

#92

Find this orig. post standing + with sides facing as described in notes. Someone has driven a bear axle by it. Agrees reasonably with remains of Spruce + Balsam. So decide it has not been moved.

Remove axle + drive 24" x 1 3/4" SP for MC. (in old stake hole) Drive sawed post on E side, + pile rocks around.

Bearings (from pipe)	5° var:	
Y. Pine 9" S 29 3/4° E	.618 =	40.8'
Y. " Stump 14" N 9 1/2° W	.52 =	34.45'

Meas. E-W to location between 2 stumps with bearings

@ .795 intersect base line (page 77) 1.787 S 8 1/4° from Sta. 79.591 + turn ← NW to W 73° 55'

@ 1.62 set SMC by record course + dist from the two stumps. (1.68 puts us too far East to fit the stumps.)

Drive I.P. (24" x 1 3/4") + find old stake (at north edge of pipe) Drive sawed post.

New Bearings	var 5° E.	
Birch 6"	N 13° W	.326 = 21.5'
B. Oak 4"	S 50° E.	.06 3/4 = 4.45'

Meas. to #33 = 2.315 (Rec = 2.32)

S. Secs. 29 + 32  
W. shore island

S. Secs. 29 + 32  
S.E. shore island

Secs. 28 + 29 on NW shore island

#94

Drive car axle in rocky bottom (edge of water) by record distances from the two stumps. Both in good condition - The S. stump cut low but part of BT remains.

∴ Hemlock stump 18"	N 61° E ±	.07 =	4.6'
" "	10" S 22° W ±	.09 =	5.9'

Nov. 12<sup>th</sup> Check Orig. MC #37 on S shore lake between Secs. 32 + 33 as set by Vaughn. He has an iron pipe here - no post.

#37 The Y. Pine Stump 18" has S 8° E .13 = 8.6'  
S Birch 7" down S 17° W .52 = 34.3'

S. Secs. 28 + 33

Nutter reported "destroyed" in 1903 + marked a hemlock, of which we find no trace. Vaughn marked

Sec. 29.Nov. 5<sup>th</sup> 1928

- continued from page 77

Sta. 87.889 over lake

95.045 hub on hill

offset here 1 lb North to stay in random

103.126 " still on .01 offset N.

110.176 " offset 16" further North to " " "

Total offset North = .03 ch

116.649 hub (on " " )

Turn E to North to Orig.  $\frac{1}{4}$ S as set  
by Vaughn  $91^{\circ}10'$  2.34 ch.
$$\therefore 116.697 \text{ nt } \angle \text{N to } \frac{1}{4}\text{S} \quad 2.34$$

$$+ .03$$

$$\hline 2.37 \text{ varied S.}$$

Set over bottom of Vaughn's post + check bearings

\* (An iron bolt is at S. edge " )  $\checkmark 3^{\circ}10' \text{ E.}$ 

Orig W Pine (down) N48E .18

Vaughn's W Pine Stump 16" N89 $\frac{1}{2}$ E .63

Substitute a long iron pipe for iron bolt - Nov. 1929

Supplemental  
Notes not received  
at this time.87.889  
+ 7.156  
95.045

Nov. 12<sup>th</sup> (after setting corners)  
Run Traverse North over islands from Sta. 79.57

- ch
- (a) N 6°55'E. 4.72
- (b) N 21°23'20"E. 5.683 into Vaughn's random north-across island  
thence B.S. on MC #37 + run
- (c) N 0°59'20"E. 7.00
- (d) N 17°28'40"W. 4.895 To Top of bank + in line  
of SMC (94) under bank + Orig MC #39 on N. shore
- Set flag (A) here for  $\Delta$   
(SMC 94) = 2.15<sup>+</sup> N. on line)

Nov. 13<sup>th</sup> 1/2 day

Ray H. Hall, Marshall + F.A.

Complete this  $\Delta$  and also a  $\Delta$  direct from  
#91 East to a temporary hub in trying to  
locate MC #42 (- final result noted.)

Note. This reduces line over island, to

$$\begin{array}{r} N 134^{\circ}1'30"W \quad 23.205 \\ + \quad 2.22 \\ \hline 25.425 \end{array}$$

Since the course for the 222 was N 134 7/8° W, decide  
to lump the two + call it N 134 1/2° W.

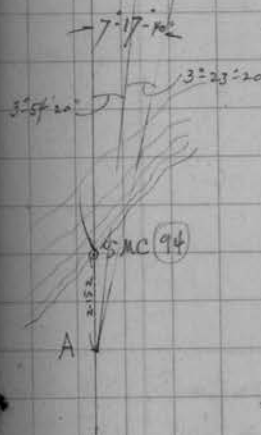
Making a straight line from SW 28 to SMC (94)



At #39 S to NE,  
 $178^{\circ}24' \Rightarrow 356 = 48$

In  $\Delta$  A.B.C.

$$\begin{aligned} t &= \frac{a \sin B}{\sin A} = \frac{6.7257 \times \cos 20^{\circ}33'20''}{\sin 7^{\circ}17'40''} \\ &= \frac{6.7257 \times 0.936333}{0.126966} = 47.599 \\ &\quad - 2.152 \\ &\quad \hline 47.447 \end{aligned}$$

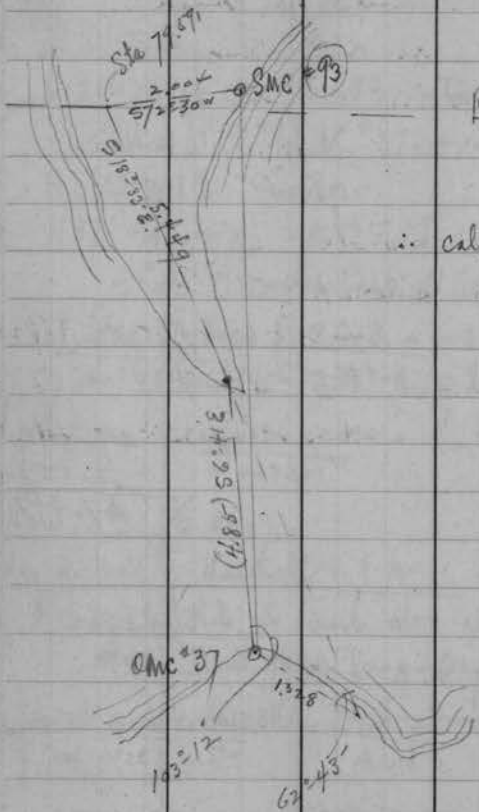


In  $\Delta$  A.B.C. check

$$\begin{aligned} t' &= \frac{a \sin t'}{\sin A} = \frac{3.5105 \times \cos 15^{\circ}35'45''}{\sin 3^{\circ}54'20''} \\ &= \frac{3.5105 \times 0.96318}{0.068117} = 49.638 \\ &\quad - 2.152 \\ &\quad \hline 47.486 \end{aligned}$$



November 14<sup>th</sup> Amosy Ray + Marshall.  
Tie up OMC #37 with our base line on island →



∴ calc dist from #93 S to #37  
= S 2° 05 1/4' E.  
10.593  
Grit me = 10.59  
.0003 ✓

Nov. 17<sup>th</sup> 1928 35°± Spitting snow  
3 Halls + F. Ackley 3/4 day.  
Run N 88° 50' W from (6) see page 69  
on true 1/4 line. (Repeat off Random & 4 times).  
0.0 = Our 1/4 S. as set (page 69)  
12.62 hub (+ move S. 2 1/2" to = 0° 0' 50")  
16.23 ⊕ graded road W.N.W.

19.666 Set 1/8 S (f) on line

Pitch post. from which	ch	ft
(heaving) y. Pine 20" S 5° E	.75	49.5
y " stump 18" N 5 3/4° W	.595	39.3
y " " N 28° 20' E	.547	36.1

(f)

20.00 Temporary to  
25.674 hub on brow of hill overlooking lake  
{ AZ 245° S. end point on Grit Lot 2  
254 3/4° NW end blunt point on Grit Lot 4  
fall 4 or 5 ft. N. of old y. Pine blazes

E+W  $\frac{1}{2}$  line Sec. 28

30.00 Set pitch post + I.P. on tanks  
about 5' above water.

Mark (in feet on trees)	ch	ft.
Y. Pine 18' S 2° E. (177° 55')	.874	= 57.7
Y. " 16' N 42° E. (41° 55')	.935	= 61.7

30.09 water's edge.

Shore bis. S 25° W 2  $\frac{1}{2}$  ± ch. in curved bay  
S 62° W to point on Lot 4  
" " N 24  $\frac{1}{2}$ ° E (for about 35')

$\frac{1}{2}$  39.333 calc. center Sec. in lake  
19.666

Meander shore line of Lot 3 in feet

Commencing at MC (P)

Station	feet	Azimuth	Needle course	water
①	60.	42°-41'	N 43° E.	10'
		middle ord. curved shore		15'
②	85.	84°-58'	N 85 $\frac{1}{2}$ ° E	12'
		Tangent to water in center		
③	55.	37°-04'	N 37° E	12'
		middle ordinate curved shore		4'
④	245.	6°-43'	N 7° E	10'
		6 or 7' from water at center		

## Meander of Lot 3 Shore

⑤	130.	339°-18'	N 20 $\frac{3}{4}$ ° W	8'
		Tangent to water in center		
	at ⑤	219°	point on East Lot 4	
		233 $\frac{3}{4}$ °	South of point on Lot 2	
⑥	110.	301°-34'	N 58 $\frac{3}{4}$ ° W.	8'
		3' from water at center		
⑦	55.	286°-33'	N 73 $\frac{3}{4}$ ° W	9'
		Quit for the night.	cold.	

Nov 20<sup>th</sup> Same party + 25° to 30°  
Continue meanders.

⑧	74.	306°-54'	N 53° W	8'
		at ⑤ point slightly rounded		
⑨	110.	323°-57'	N 36°-20' W	(on shore)
		@ 9 locate buildings roughly		
	29.7	137° 05'	SE x (8x18) outhouse	
	35.	101°-50'	NW x " "	
	49.3	36 $\frac{1}{4}$ °	SE x from cottage (32x48)	
	?	346 $\frac{1}{2}$ °	SW x " "	
	?	60° 11'	Water tanks	

Garage (18x24) bis. NE from NE x cottage 35'

89 Lot 3 Meanders

Station	feet	Az.	Compass	from water
(10)	210.	316°-17'	N44W	5'
	@ 142.5'	SW x new cottage (15 x 20 ±) hrs N51°E		
				16'
(11)	78.	324°-29' 324°-28'	N35½W	5'
	@ 60. enter	swamp hrs. N40°E.		
(12)	70.	306°-43½' 306°-42'	N53½W	
	All swamps.			
(13)	67.4	293°-58' 293°-56'	N66W	
	leave swamp	hrs N66½E		
(14)	200.	287°-17½' 287°-15'	N72½W	
	@ 14'	359°-10' = line N. (short sight)		
		179°-09½' = line S. ✓		

## N+S ¼ line Sec. 28

90

Nov. 19th 1928

B. Halls + F. Ackley.

1" Saw 30'

Set ¼ S (7) by  $\angle$  E. to S. off our 2<sup>nd</sup> random  $\frac{1}{4}$

88°-01' from sta.  $\frac{40.053}{1.202}$

= rt  $\angle$  S. from  
Sta. 38.818-.961

= S 0°-47'-40" E.  
calc. course of ¼ line

(Reverse + set tall flag about 3 ch. North to  
be in sight from north shore over tall trees.)

Drive 24" x 1½" DP. + Pine post (w. g. pipe)

at (7) Marks (in feet on trees) v. 3°-48'

W. Birch 8" S 59° E.  $\frac{1.44}{1.44} = 95$  ft.

B. Oak 4" N 21°-40' W 2.00 = 132 "

Center of R.R. tracks hrs. 13.6' SW  $\frac{1}{4}$

" " Town Road " 21. N 8  $\frac{1}{4}$ .

Now, after setting (5) see page 66. Reverse +  
run S 0°-47'-40" E. ( $\angle$  off traverse E to S)

84° 37' 20"

0.0 ¼ S. (5)

.594 hub in wheel tracks.

10.264 " + move west .002 = 1¾" to  
= required  $\angle$

N+S  $\frac{1}{4}$  line

$\frac{240.453}{20.226}$  to centre

18.686

hub.

20.00 Temporary  $\frac{1}{8}$

20.226 Set  $\frac{1}{8}$  S @ on true line as corrected below

@

Pitch post + Iron Pipe from which

Y. Pine  $11^\circ S 28\frac{3}{4}^\circ E$ . 685 = 45.2

Y "  $10^\circ S 80^\circ 20' W$ . 59 = 38.9

(Marked  $\frac{1}{8}$  S. BT)

This corner falls .33 N. of center of road  
Post found at N. edge road is  $.37\frac{1}{2}$  E. of line.

22.633 hub + turn def.  $\angle$  E to flag  $0^\circ 3\frac{1}{2}'$

(Correct .016 E) + continue

on true line.

24.398 Spike in top of Y Pine stump on slope

25.32 Iron Pipe in sand beach from which

@

B. Oak  $6^\circ S 78^\circ 20' E$  79.6'

Y. Pine  $6^\circ N 78^\circ W$  75.7'

(Trees marked in feet)

Stake found true wly  $12\frac{1}{2}'$

$\frac{1671.1}{1610.4} = 60.7$   
 $\frac{60.7}{59.7}$

$\frac{25.32}{24.40} = 104.16$

$\frac{73.6}{75.7} = 97.2$   
 $\frac{151.3}{151.3}$   
 $\frac{19.6}{19.6}$



Correct line (1/8) in preparation for

Preliminary Traverse Sec. 28-39-6 - (Assuming E 28 as Meridian)  
Beginning at Orig M.C. # 39 on N. shore Blue Lake.

Course	Sin Cos.	chains.	N.	S.	E.	W.
N $0^\circ 10' 15'' W$	.00298	1.	9.638			.029
S $87^\circ 43' 15'' E$	.999212	79.83		3.175	79.767	
South	.03971	79.326		79.326		
S $89^\circ 46' 15'' W$	.99997	57.902		.231		57.902
N $89^\circ 34' 45'' W$	.99997	6.396	.047			6.396
N $89^\circ 02' 30'' W$	.99986	13.23	.221			13.228
N $1^\circ 41' 30'' W$	.02952	25.425	25.414			.751
N $1^\circ 46' 15'' W$	.0309	47.45	47.428			1.466
N $1^\circ 45' 10'' W$	.03089	99.53	99.53			1.435
			82.748	82.732	79.767	79.731
			.016 error		.036 error	
			82.747	82.732	79.767	79.772
			.015 error		.005 error	



73 Calc. for <sup>East</sup> ~~North~~ Quarter line

North around Sec. 28 from  $E\frac{1}{4}$  (6)

Course	chains	N.	S.	E.	W.
North	39.663	39.663			
N87°43'15"W	79.83	3.175			79.767
S. 0°10'15"E	9.638		9.638	.029	
S 1°45'10"E	31.618		31.603	.967	
(To $\frac{1}{4}$ S. in Lake.)		42.838	41.241	.996	79.767
		- 41.241			.996
		1.597			78.771

= .02027 = Cor. 88°50'20"

(N88°50'20"W 78.787 ch., calc. for  $\frac{1}{4}$  line)

Average = N. 88°50'W.

South around Sec. 28 from (6)

Course	chains	N.	S.	E.	W.
South	39.663		39.663		
S89°46'15"W	57.902		.231		57.902
N 89°34'45"W	6.396	.047			6.396
N89°02'30"W	13.23	.221			13.228
N 1°41'30"W	25.425	25.414			.751
N 1°45'10"W	15.831	15.824			.484
		41.506	39.894		
		- 39.894			
		1.612			

= .02047 = Cor. 88°49'40" 78.777

74 Calc. for <sup>N+S.</sup> ~~East~~  $\frac{1}{4}$  S. line

East around Sec. 28 from N  $\frac{1}{4}$  S (5)

Course	ch.	N	S	E	W
S87°43'15"E	39.915		1.587	39.884	
South	79.326		79.326		
S89°46'15"W	38.764		.155		38.764
		81.068	39.884		38.764
			- 38.764		
				1.120	(.01381 =

(Tan S 0°47'30"E. 81.076 ch.)

S. 0°47'40"E.

West around Sec. 28 from S  $\frac{1}{4}$  S. (7)

Course	ch.	N	S.	E	W.
S89°46'15"W	19.138		.076		19.138
N 89°34'45"W	6.396	.047			6.396
N89°02'30"W	13.23	.221			13.228
N 1°41'30"W	25.425	25.414			.751
N 1°46'15"W	47.45	47.427			1.466
N 0°10'15"E	9.638	9.638			.029
S87°43'15"E	39.915		1.587	39.884	
		82.747	1.663	39.884	41.008
		- 1.663			- 39.884
		81.084			1.124
					.01386 =

(Tan. S 0°47'38"E. 81.092 ch.)

Friday Nov. 23<sup>d</sup>3 Halls + F. Ackley,  $\frac{3}{4}$  day

Connect (10) + (6) with true line.

Set Tamarac post in bog on " @ S. shore pond.

Nov. 24<sup>th</sup> Same crew.

Meas. North from (6) (in feet)

@ 165.  $\Phi$  winding road SE + NW

@ 200. drive pine post.

@ 300. " J.P. + Sawn post.

(N)	W. line stub 12"	N 11° E	24.9'
	W " stump 16"	S 29½° E	5.8'

Check + at (6) N to W. (3 times)  $88^{\circ} 26' 40''$  ✓  
 calc =  $88^{\circ} 26' 15''$

@ 700' Enter swamp by S 50° W about 1½ ch. to rounded corner. M. NW

@ 1093.2' on Tamarac post (M) + mark (in feet)

(M)	Spurce 2"	S 10° W.	4.6'
	" 2"	S 80° W	10.6'

Mark post (M) "Lot 3" on W. side  
 4" WC 229" on N. side

1821.9  
 1093.2  
 228.7

Nov. 23<sup>d</sup> continued -Continue Ely on line from (a) as turned off Nov. 19<sup>th</sup>

Set over hub @ 388.9' Ely @

← E to S to Everhard's Water Tank 68° 42'

@ 600' opposite NW corner of swamp 90' dist.

725' parallel swamp from here on

790' hub

" about 60' S. + parallel

1030.75' hub + turn def. ← (R) to (11) 1° 42' 20"

Discover I had turned  $88^{\circ} 29' 10''$  instead of  $87^{\circ} 29' 10''$  S to E at (a)

Correct hub 1030.75' S. at rtz 18.61' + cut back West on true line. Hit post (a)  
 Re-meas. the 350' + drive J.P. + Sawn post. at W. edge W. wheel track of road.

[ This represents Everhard's NW corner, being the NEx of excepted tract (Mercedes) ]

Mark

(R)	B. Oak 10"	S 30° E.	21.4'	(to notch)
	B " 7"	S 62½° W	5.9'	

97

November 24th Same crew. Snowing.

② 200' on shore (meas. from ①)

Drive I.P. + sawed post for Everhard's + Mercedes boundary at shore. Mark in feet

B. Oak 8" N 38° 40' E 45.5'

⑦ W. Birch 7" S 67° E 23.4'

Blaze a line up the hill N 21° 50' E for Mercedes.

Now take up the north line of Lot 3 again  
Meas. E. from corrected hub which =

1030.9

1118.

Enter swamp



1277.6 Set WC post ② on edge of pond

+ 30.

✓ 1307.6 Corner in pond.

Bearings (pocket compass)

Spruce 3" S 22° W 6.5' (at trees)

" 3" N 22° W 5.5'

From I.P. @ ⑦ turn ← N to W 88° 26½' + run west by

424.5

+ 73.

497.5 fall about 0.45' N. of calc. station on shore traverse  
split difference + drive pipe. + sawed post.

① Y. Pine 20" N. 1° W 49.5'

Y " 20" S 3° E 49.5'

check meas. agrees to Lot 3 at brow of hill - G.K.

S. line Sec. 28 - (Mc Coy)  
+ Divinsky

98

Nov. 27th 2 Halls + P. Koble. See page 74

Set 1/8 S ⑭ for Mc Coy. .244 = 16.1' West of

Mc #40 on true line to #41 Mark

Hemlock 8" N 80° W .069 = 4.5'

⑭ W. Pine 13" S 70° W .10 = 6.6'

Drive a white stake on shore on true line  
(.22 = 14.5') West of ⑭Run Ely from #40 on random § 28 by B.S. on  
#41 + def. ← NE of 0° 39'

calc. dist to ⑦ = 1263.1

Fall on S. edge from Pipe at 1/4 S ⑦

Check ← at ⑦ W. to N. ① 89° 30'

Run N 0° 47' 40" W on 1/4 S. line

@ 460' hub about opposite Mc Coy's stake for  
NE x of tract conveyed. Drive I.P.

Aspen 12" S 50° W 4.3'

" 5" East 1.3'

Thence on def. ← NWly 65° 06'

161' to a stake found (on shore) Mark.

W. Pine 30" NE 1.5'

" stump 15" SE. 2.5'

Shore bears S 20° W ± 175' ±

Thence Wly about 125'  
" S 70° W to last point near Mc #40

All

Survey of Court Lot 1  
for Ed. Rudolph - of Woodruff

H.C. Hall, Marshall + E.R. cruising  
Identified Orig  $NE \times 34$  but could not  
find conclusive evidence at  $N \frac{1}{4}$  or  $MC \frac{1}{4}$ .

Looked for  $S \frac{1}{4}$  +  $E \frac{1}{4}$  nothing definite

H.C. Ray + Marshall. cruising.  
Found some ones random  $E \frac{1}{4}$  but  
the apparent loc. of orig  $MC$  on  $E \frac{1}{4}$  is  
considerably E. of said line. At point  
 $MC$  which fits contour of shore we find  
2 stumps which check perfectly + bring  $MC$   
on bank + to old stake hole. No other  
evidence of line here.

Could not find 1<sup>st</sup>  $MC$  N of  $NE \times 34$ .

Followed, said random S from lake.  
There seems to be an extra 10 ch. somewhere  
between  $MC$  +  $Tp.$  line. Whether this was N.  
or S. of orig  $E \frac{1}{4}$  is problematical.  
Plenty of birches grew in location  
record S. of lake and also where  
#51 crossed which is approx  $MC$  N. of  
 $Tp.$  line.

Identified orig  $SE \times 34$  by Bunnetts post  
+ by old BT stub. marks OK.



101 \$ 33 + 34. (42-6)

April 1<sup>st</sup> 1932 30° Snowing.

H.C. Hall with Ray + Marshall.

10 AM to 4 PM

Found Burnetts post at orig. cor to

32+33 (42-6) and 4+5 (41-6)

Remains of all 3 orig. Pines.

Distances are all a trifle short.

Courses (var 1° E)

N 55 1/2° E

S 22 1/2° E

S 6° W

This is the NE cor of Plumbo Reservation.

(Fire line brushed N+S from E side "line")

Run E in Burnetts random (var 1° 10' E).

0.0 Sec. Cor.

10.758 uses base of old picket for hub

16.78 \$ new #51 hrs S 30° E ±

25.07 spike in frozen ground for hub.

? 35.80 \$ cut-off to Plumbo

39.225 st. & S. 12° for 1/4 (not set)

93 Miles

40.28 Drive spike in log (for hub) 11 lbs. S.  
of Burnetts 1/4 post. no bearing visible

This corner might possibly be identified when frost is out as there are plenty of stumps + tree remains.

(Burnetts is evidently set in on pro-rate)

55.262 spike for hub

64.54 " " brow of lake bank.

65.20 fall .168 S. of Burnetts MC post at W. shore of Fresham lake.

We couldn't stay in Burnetts random beyond 43 ch.

" " hrs SE 1/4

? 77.36 tip of bushy point (sand spit) from S.

80.00 spike in ice at record (var here 1° 36' W)

Turn & R to Burnetts MC between 3 + 4

71° 15' 1.615 ch.

78.45 st. & S. 246 + drive temp spike in ice for

(4) SW x Sec. 34 { Birch 8" S 63 1/2° W 1.07

marked on bark { Maple 4" S 11 1/2° E 1.35

var 1° E.

\$

84 ch. opp. NE corner of point from S.

(80.518 etc S. to Burnett's MC. 1.53)

111.32 leave lake

112.69 Spike for hub

+ quit for night - snoring heard

April 4th 1932 Overcast 30°

Same party + Ed Rudolph.

HC find Orig MC. W of 4 on 34.

Chopsway overgrowth on top of pine + find BT ok  
(Burnett had used NW side of "atp  
for new bearing!")

Cannot reconcile the birch - only birch near  
does not fit + looks too young.

We set oak post by rec. from atp. {B. Oak 6"  
S 30 E .14

Turn W to S to from 112.69

15-13 (30-26) 1,335 ch.

∴ 111.402 turn etc S. to orig MC.

Tan 0° - 10° - 45° correct S.



111.56 fall .164 S. of Burnett's MC.

(∴ Burnett's MC lies N 18° E .537 from O.M.C.)

111.56  
111.402  
.1584

117.46 spike for hub

117.558 fall .177 S of Burnett's 1/4 post.

118.49 shore

117.675  
117.46  
.215

117.675 calc 7 .252 S. ground.) Pitch post.

(7) { W. Pinch 6" of 40" W P.C. .522  
Burnett's Oak 8" N 17" W .885

46.90 shore (true line = 207 N. ground.)

149.05 hub

156.90 fall .363 S of Burnett's post at Orig

S. Sec 34. OK.

2/156.90

78.45  
x 00 31 W

78.45

.246

and 1.55 W.  
for Sec 34.

160. Rec

156.90

160 / 3-10 short

.01937 per ch.

39.225 for 7

78.45 Sec Cor.

117.675 1/4

Burnett's division of the 2  
Miles is erroneous.

Burnett  
115  
+ 191  
= 306  
700 paces N  
at MC

W.

Take Orig.  $W\frac{1}{4}$  as marked by intersection of  
Town Road (north) + #51  
(State Hwy. Dept. had orig. corner here &  
say it sets E of straight line. A S of #51)

Both orig. bearings would be in road N.

Drive temp spike A S. of # grading #51  
 0.6  
 r1  
 See page 117 (8)  
 { Tel. pole S  $39\frac{3}{4}$  W .40  
 Mile post N 85 W 3.455  
 W. Pine 10 S 11° E 1.317  
 #51 brs. N 88° E

Drive Iron Pipe for 4 April 26th

Run S. on random var. 1° E.  
 0.0  $\frac{1}{4}$  cor in # road intersect  
 50 pine hub (.04 W)

12.884 Spike for hub (1.025 W)  
 (Th. E to S  $94^{\circ}32'50''$ )

26.047 " Top of lake bank. (2.072)

27.15 Hub on shore

42.764 intersect Random Tp. line at 81.87

+ Turn = " lines W to N.

$\sphericalangle$   $89^{\circ}18'$  @  $178^{\circ}36'$

Note - Due to obstructing tree tops, approaching  
rain squall & difference in elev. My  
line as sighted from 27.15 is apparently  
.006 E (at N side of point) of my orig.  
random as sighted from 26.04

$\therefore$  42.764 intersect random Tp. line at 81.865 + Turn  
 W to N.  $89^{\circ}19'$   
 - 0 10 45  
 $89^{\circ}08'15''$  with True Tp. line W to N.

$\therefore$  at 42.969 at W to Sec Cor. on ice 3.418  
 correctn W =  $\frac{.07955}{\tan 4^{\circ}32'50''}$

True distance  $W\frac{1}{4}$  to SW = 43.104

If I had run S. on  $3^{\circ}33'$  West var. my line  
would have been nearly OK.

Information on  $W\frac{1}{4}$  - from State Hwy Dept. Phil.

Cor. is orig. according to " " "

Their survey in fall 1915 F. Bark #859

Lot # 7033 Sheet # 3

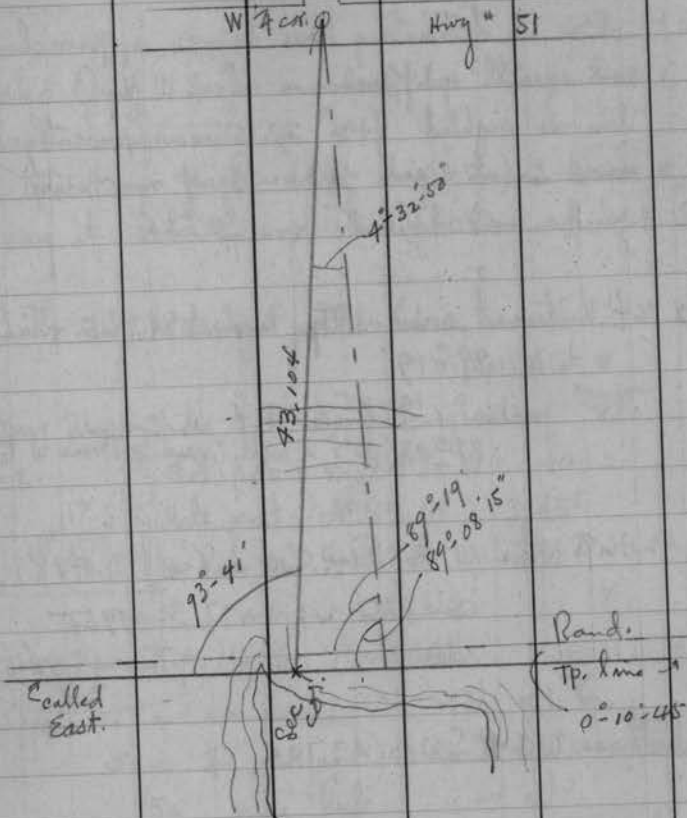
$W\frac{1}{4}$  comes 0.4' S of #51

Thence W to  $W\frac{1}{4}$  33 5375.6'

W 7 cor. ①

Hwy # 51

34



Apr. 25<sup>th</sup> 1932<sup>AM</sup> Same party - overcast - mazy - 35°  
 Turn St to W 4°-33' off random at W 7 & run S. on  
 true line.

(25.901) { Hub on top of tank (turn 2 St to E 88°-28'  
 + 1.174 (to point .15' N of sta 26.042 on road.)  
 27.075 → M.C. estab. herewith.

Van 2° E  
 (M) { Y.P. sta 24° N 22 W (+ 28 3/4°) 43°-  
 B. oak 4° S 89 E 284 305°-  
 Birch 6° N 36 W 242 35°-

continued

North line

April 25<sup>th</sup> 1932 PM

Identify Orig NW cor 34 by both orig stps  
 have been re-scribed by someone.

Intersecting record tie ins brings us just  
 SW of two old stake holes. Drive new  
 cedar post in the " " which agrees  
 most nearly with distances from stps.

Turning vernier to 0°-05' W makes NE stp read OK

①	New	f B. Oak 8"	S 60 7/8 E	.515
			S 70° W	.234
		{ other orig.	N 48° E	1.22 1/2
			N 22 W	1.837
		{ fence cor. post	S 70° W	.234
		(NE face " )		

Run S 7/8 on random from NW x Van 1°-50' E ±  
 0.0 Orig NW x 34 (St to E about 89°-55')

7.235 Hub just SW old road (has St 6)  
 18.36 "

30.00 Hub  
 39.50 "



E on N 34-42-6 continued

39.90 \$ Highway (N+S)  
(. hrs S 1°W on road 1°50'E)

40.12 Govt Rec.

40.553 x .0018 = .073 correct N. for 1/4 S.

1/4 (5) Drive S. P. + pine post.  
Apr. 26 { Pople 9" N 6° E .14  
with Pocket Compass

Also, find old cruisers mark on down Norway  
about .12 NE of 1/4

44.50 fall .08 ch S. of pine stub with  
very old S+W blades + cruisers  
marks (old) facing E.  
This is excellent evidence of the line.  
44.5, 08 (00179 - Jan 0-06-10  
00180)

45.00 Hult

45.90 shore at about loc. for MP

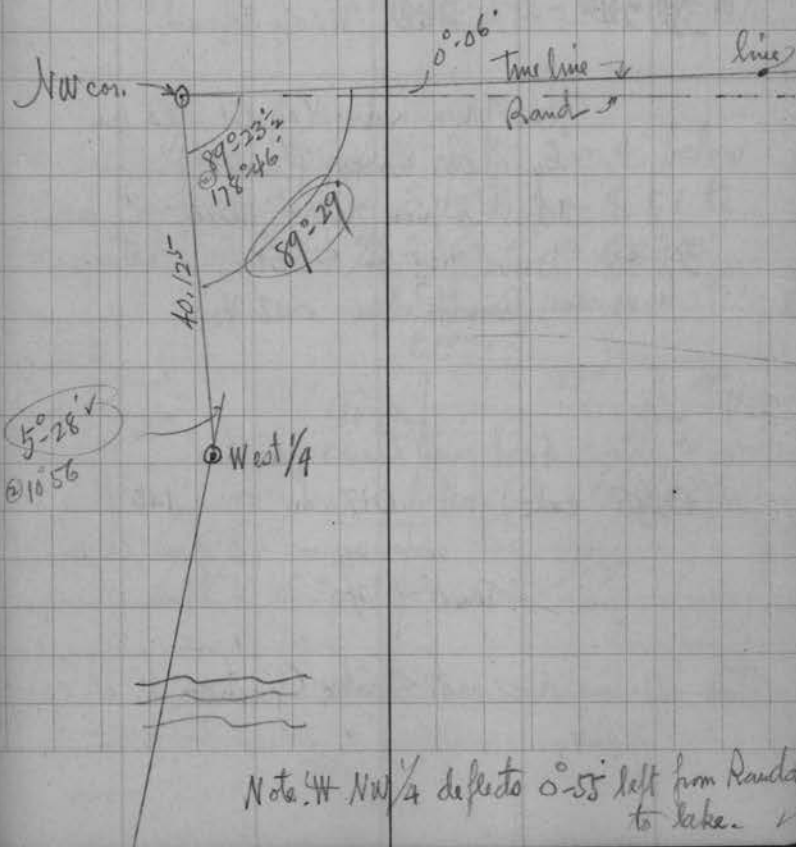
Govt rec. = 80.24 - 34.83 = 45.41 to lake  
- 45.90 Meas.

45.41 ) .49 pump (.0108  
x 40.12  
-----  
40.433  
40.12  
-----  
40.553 for 1/2

N. line 34. continued

#1 Observed Sun at 3:18 PM Standard Time  
from hub on random N.  
vert = 36°-40 1/2'  
horizontal = 20°-39' W to S. of random  
∴ Calc. course to random = N 89°-38'-20" E

Connected time to Lot 1 with Random N as below



Note: W NW 1/4 defects 0.55' left from Random  
to lake.

Sec 34-42-6 E.

N + S 1/4 line

April 26<sup>th</sup> '32 Same party. 30° 40'  
 Set N 1/4 as on page 109 + Run S 1/4  
 on calc. course to hit S 1/4.  
 by  $\angle$  W to S off random 4 86°-54'

00 1/4 S. (Iron Pipe)

35, 247 Hub (W. of Road)

This town Rd. (N. of E 51) was put in  
 by guess work. Probably by meas.  
 10 ch E from NW + W 1/4.

39, 40 Drive peg in E 51  
 (Condn line = .008 W)

Did not meas farther.

(83, 95 calc) fall .017 ch. = 1.15 ft  
 .00020 E of our 1/4 on T p line  
 $\angle$  tan 0°-0' 40"

This 1/4 line does not strike Graham L. at any  
 point.

34-42-6

(x2) Observe Sun on N + S 1/4 line (random)  
 Standard time 2:50 1/2 PM  
 obs. alt. = 41°-30'  
 hor.  $\angle$  = 59°-37'  
 (calc. S 2°-43'-44" W)

Again at 3:03 1/2 PM. same line  
 (x3) obs. alt. = 39°-21'  
 hor.  $\angle$  = 62°-59'  
 (calc. S 2°-44'-47" W)

At West 1/4 cor. Drive 3/4" S.P. 3" or 4" below  
 road surface. Turn  $\angle$  E to S from E 51 to  
 connected Sec. line 96°-06 1/2' @ 192'-13"



Sec. 34-42-6  
continued

Observe Sun on  $\$51$

(\*) Standard Time 4:05 PM  
Vertical  $\angle$  29° 14'  
Hor.  $\angle$  9° 22' 1/2

(W to S off  $\$51$ )

$\therefore$   $\$51$  course is S 88° 24' 30" W  
by 260

Run S<sup>ly</sup> on 1/8 Sec. line Between lots 1 + 2

Being an intermediate course between  
N 1/4 line + 40 S 1/2 Sec.

By  $\angle$  W to S. off  $\$51$

0.0  $\$51$

84° - 46'  
18.99 Ely from 1/4

50 Drive pine Hub for Randolph N Ex  
{ Jack Pine 8" S 15° W .41 1/2  
Pocket Compass bng.

28.39<sup>2</sup> Hub at top of lake bank

29.00 " for MC. (10' from water)

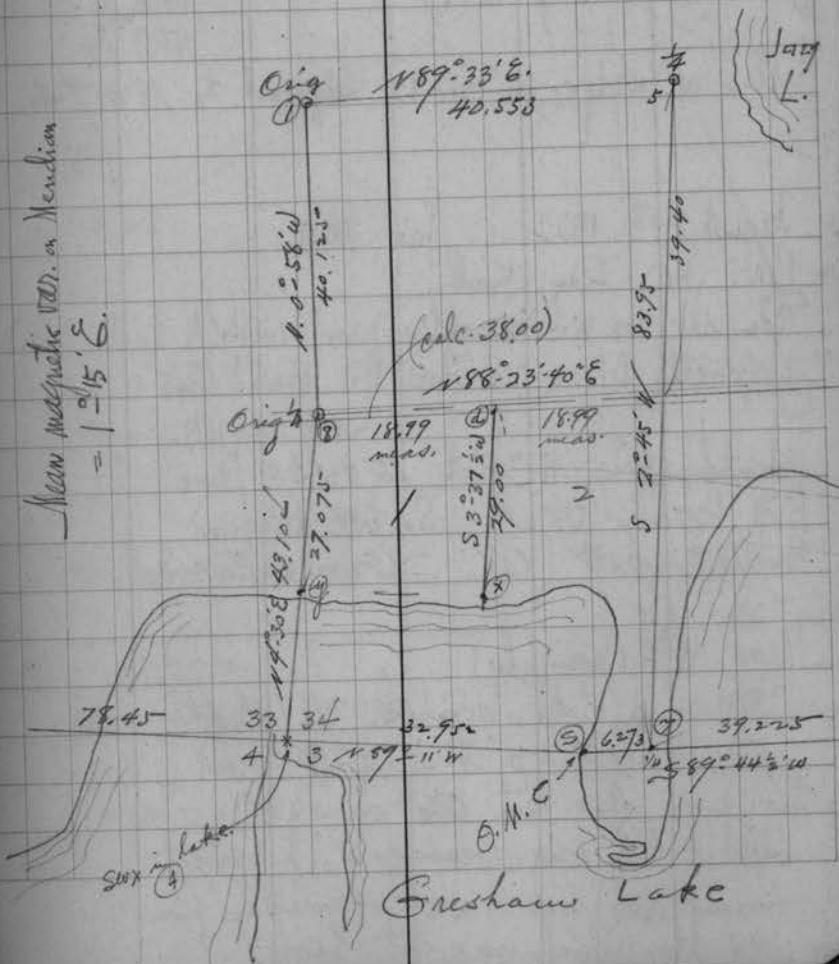
(\*) W. Pine 10" S 60° E .37  
Y " 11" N 60° W .52  
Pocket Compass bng.

G.R. did not require shore meander.

ll

Diagram

In field work used true line from  $\$50 \times 33$  to Orig  
MC on  $\$51$  SW 1/4 34 as assumed & rec.  
After determining true Meridian (ave. of 4 obs. solar)  
adjusted true courses are as follows:



13-41-6

Survey of following units in  
"Trout Lake Add<sup>n</sup>"

Surveyed in 1925 by W.A. Powell  
Rec. vol 5 P. 14 Plats (Vilas County):

lots 2-3-4-5 in "Govt Lot 1" Exterior lines  
6½ " 17 + all of 18+19 " " " only

Also a wedge in Sec 12 adjacent to 18+19 etc.

August 19<sup>th</sup> 1932 fair 75°

P.M. H.C. Ray, Kreith

Compare Dr. Wilson's blue print with  
Powell's B.P. on record OK

Identify Orig. MC bet 12+13

Both bearings OK! S. tree dead.  
Powell's? post OK. (5 Spot Billie's mark trees)!

Meas. Wly (roughly)

361.2 a stake - scribed 17-18 (Rec=363)

760 ± about opp. A

This post also set OK.

Steps of both orig. bearings ✓. A perfect  
boxing (slab) lies loose - apparently from  
NW step, which was cut high.

for Dr.  
A.W. Wilson

13-41-6.

Solar observations - direct.  
Drive hubs A + B. for obs. in road back of Wilson's

Time my watch

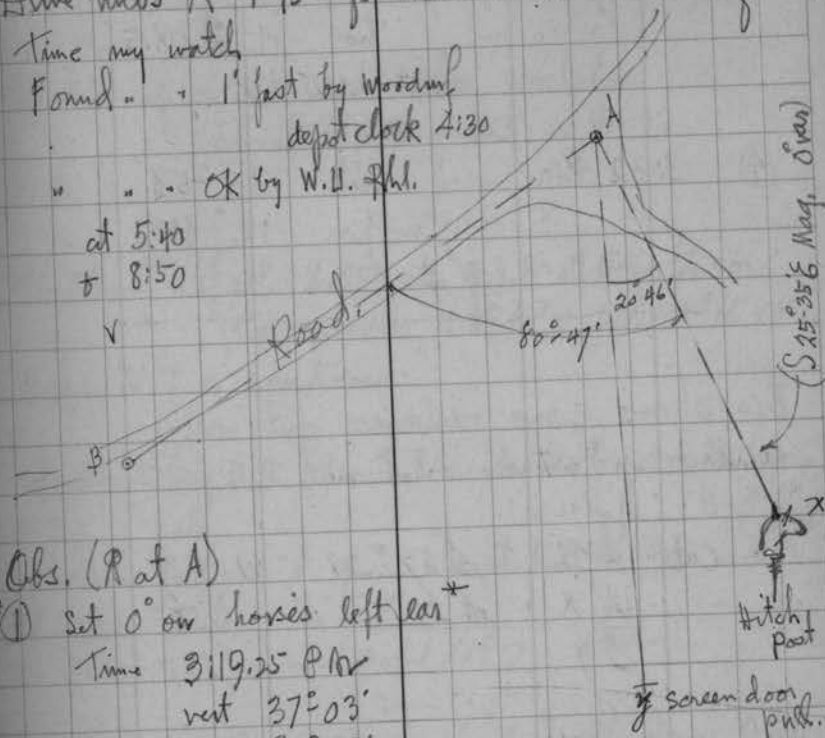
Found " 1" post by Woodm<sup>l</sup>  
depot clock 4:30

" " " OK by W.L. Phil.

at 5:40

+ 8:50

✓



Obs. (R at A)

\*① Set 0° on horses left ear\*

Time 3:19.25 P.M.

vert 37°03'

hor. 90°39'

=  $\phi$  23°-26'-55" E.

\*② 3:22.2

vert. 36°35'

hor. 91°20½'

=  $\phi$  23°-28'-10" E.

Obs.

Lat. = 46°-02.6

Long = 89°-41.4



13-41-6  
continued

At A Set 0° on B

③ 3:29 PM rest  $35^{\circ}24.5'$   
hor.  $12^{\circ}08.5'$   
 $\phi 57^{\circ}22'$  W.

④ 3:32 PM rest.  $34^{\circ}58'$   
hor  $12^{\circ}45'$   
=  $\phi 57^{\circ}21'36''$  W.

This shows some variance but will  
average up + take  $\angle$  turned into consideration

+ call A B.  $\phi 57^{\circ}21\frac{1}{2}'$  W ( $237-21\frac{1}{2}$ )  
A X  $\phi 23^{\circ}26'8''$  ( $156-34'$ )  
A y ( $177^{\circ}20'$ )

Will get further obs. if possible.

$\begin{array}{r} 57 \quad 21 \\ - 55 \quad 05 \\ \hline \end{array}$

$2^{\circ}16\frac{1}{2}'$  Var on Meridian

13-41-6  
continued

August 23<sup>d</sup> 1932. Overcast to fair  $75^{\circ}$

The line up on I.P. said to be Walsh's  
(about  $180^{\circ}$  W. of MC on #13.)  
B.S. on " " "

Run them + fall  $8.05'$  N. of I.P. at Orig  $\frac{1}{4}$  cor.  
(Course reads  $N 88\frac{3}{4}^{\circ} W$  with  $2^{\circ}16'$  var.)

Meas. W. by on random

0.0	Orig MC. (Use I.P. as driven by Dr. Wilson)	
195.7	hub	2.07
360.6 $\pm$	fall — N. of an old stake (P.R. $361.24'$ )	Com. S (I.P.)
401.2	hub	
413	rec. for mid point lot 17 (411.00)	(4.36)
+ 99.52		
512.52	for $\frac{1}{2}$ lot line Huck + Brown.	(5.43)
515.3	hub	(5.46)
659.8	opp old stake (659.8)	
687.2	hub	(7.28)
759.3	at $\angle$ S. to $\frac{1}{4}$ cor. / $8.05'$	
	$.01060 = \tan 0^{\circ}36\frac{1}{2}'$	
	$= 759.34$ on true line	

$\begin{array}{r} 515.30 \\ - 512.52 \\ \hline 2.78 \\ \text{E. of hub} \end{array}$

119

13-41-6

continued

Set over pipe at  $\frac{1}{4}$  cor. (Var 2°-16' E)

III. Stp sig. W. Pine S 75° E ✓  
 " " " " N 37° W ✓

On random at  $\frac{1}{4}$  cor. Observe Sun.

⑤ 10:09.1 AM S.T.

r. 48°-00.5'

h. 45°-12' E to S *ff rand.*

763 Plat record.  
 - 759.3 Acas.  
 763 | 3.7 short

 $.00485 \text{ per'}$  $.485 \text{ " } 100 = 99.52$  $.242 \text{ " } \frac{1}{2} \text{ lot} = 49.76$ 

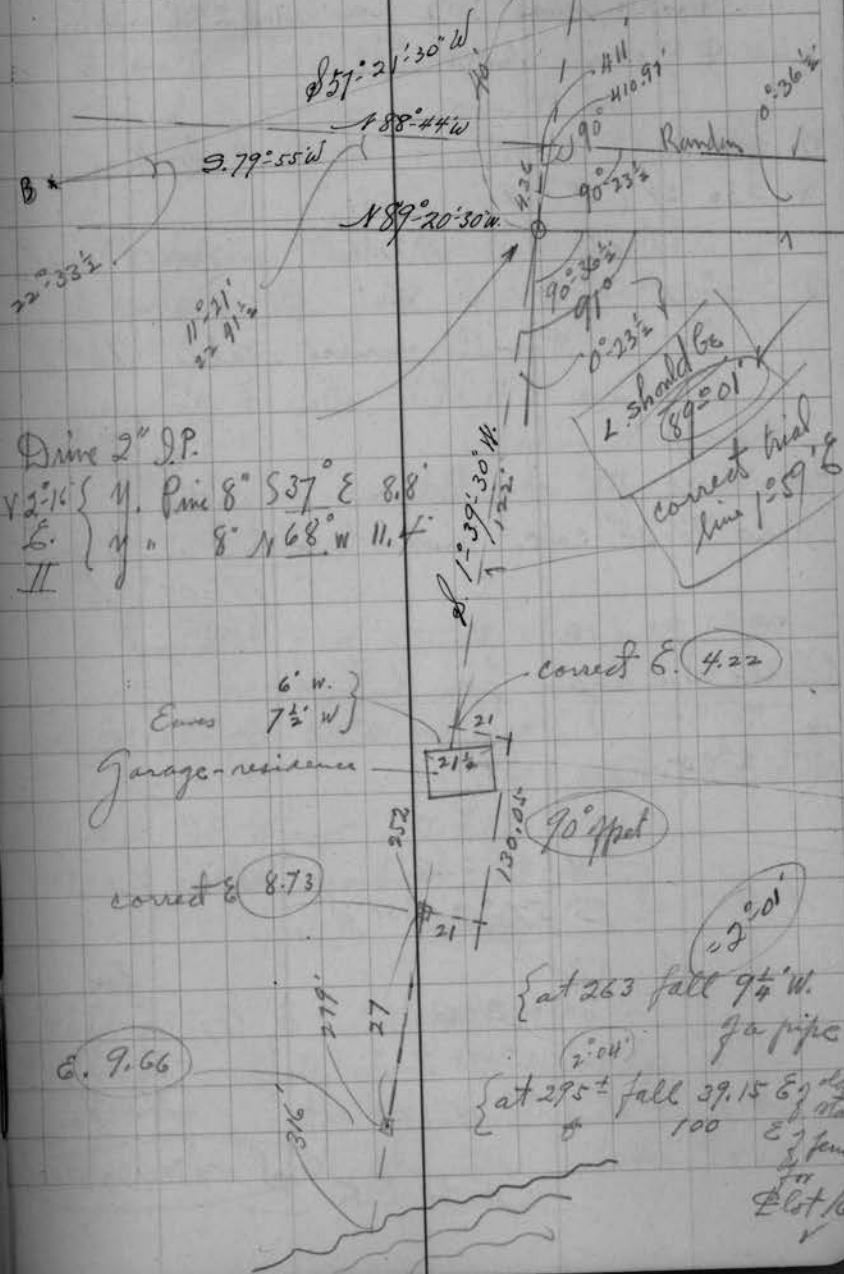
$$\begin{array}{r}
 113 \times .00485 = 200' \\
 - 413 \\
 \hline
 411'
 \end{array}$$

$\frac{1.54}{1.37} = 1.124$   
 $\frac{1.54}{1.37} = 1.124$

True Courses

More W. 1.385'

120



Run trial traverse SWly from sta. 252 on  $\frac{1}{4}$  17  
(Use  $\frac{1}{4}$  17 as run for N+D)

- ①  $222^{\circ}-09'$  ( $42^{\circ}-09'$ ) 58.35-  
 ②  $236^{\circ}-29'$  ( $56^{\circ}-29'$ ) 260.  
 (at 72.3 intersect fence)  
 ③  $242^{\circ}-50'$  ( $62^{\circ}-50'$ ) 86.1 to one of  
 Powells scribbled stakes "13+14"

Fence calc. OK at lake.

Stake "13-14" calc. makes  $\angle$   $\frac{1}{4}$  cor.  $\frac{1}{4}$  S  
 $89^{\circ}-05'$  !

Observe Sun again from hub (A)

⑥ 3:35 PM S.T.  
 v  $33^{\circ}-09'$   
 h  $12^{\circ}-48'$   
 A-B =  $S 57^{\circ}-20' 31'' W$

⑦ 3:37.4 PM  
 v  $32^{\circ}-44'$   
 h  $13^{\circ}-20\frac{1}{2}'$   
 A-B =  $S 57^{\circ}-21' 24'' W$

Must be OK  $S 57^{\circ}-21' 23'' W$

Aug. 30<sup>th</sup> 1932 80° variable  
 3 Halls 8:10 AM  
 Connect 2 stations on our  $\frac{1}{4}$  Sec 13  
 just E of  $\frac{1}{4}$  cor. + check in to  $\frac{1}{4}$  Pipe OK.

We discover that the line of stakes  
 angles SWly from  $\frac{1}{4}$  cor. !

Line E of  $\frac{1}{4}$  falls 1.73' N of run line  
 following stakes as  
 100.6 W of " nearly as possible from Pipe at  $\frac{1}{4}$  cor.  
 100.

$\angle$  turned at  $\frac{1}{4}$  cor W to SW  $0^{\circ}-58\frac{1}{2}'$  @  $1^{\circ}-57\frac{1}{2}'$   
 " " " "  $1^{\circ}-58'$   
 $\therefore S 89^{\circ}-40'-30'' W$  on line } marked lot stakes  
 $0^{\circ}-59'$

0.0 S.P.  $\frac{1}{4}$  cor.  
 100.8 stake marked "13-12"  
 fall on S. edge.

200.55  $\frac{1}{4}$  stake "12+11"  
 300.55 fall about 1" N of S. edge "11-10"  
 330.0 cut 12" oak on line  
 400.25 fall OK with  $\frac{1}{4}$  bottom 9+10

123

13-41-6

500.15  $\perp$  bottom stake 8+9"  
 600.20 " 7+8  
 700.1 " 6+7  
 800.1 OK with post 5+6.

= Dr. Wilson's NE cor.  
 ran on  $0^\circ$  Az =  $274^\circ 6'$ .

799.82

or (.288)

Drive  $1\frac{1}{2}$ " I.P. for NE x Wilson

Time { W. Pine 14" N  $6^\circ 25'$  W 32.9'  
 B Oak 20" S  $34^\circ 50'$  E 54.4'

(cor. to slightly W. of E of I.P.)

900.0 OK with post 4+5

1000.3 " " 3+4

1099.85 " " 2+3

✓ 1199.7 " " 1+2

(Wilson's NW cor.)

✓ 1199.7<sup>2</sup> Remove post + drive I.P. in hole.

I Aug 31st Time { W. Pine 8" N  $46^\circ 24'$  E 36.7'  
 Az: W " 3 S  $3^\circ 35'$  W 31.  
 on bank

1307.00 OK with  $\frac{1}{8}$  post. (Rec 1308.4)

1308.1 = Pro. rate dist.

124

continued

Decide to run traverse from  $\frac{1}{8}$  post found  
 utilize road + avoid cutting.

①  $269^\circ 40\frac{1}{2}' = (\phi 89^\circ 40\frac{1}{2}' W)$  188.  
 on same line

@ 100.7 Stake found (on line)

@ 188 Obs. sum.

3: 01.5 PM C.S.T.

rest  $36^\circ 13\frac{1}{2}'$ Az =  $241^\circ 00'$ ②  $309^\circ 18' = (N 50^\circ 42' W)$  166.③  $277^\circ 29' = (N 82^\circ 31' W)$  400.④  $216^\circ 14' = (\phi 36^\circ 14' W)$  230.= (  $29.35'$   $\phi$  of  $\frac{1}{8}$  post +  $849.00'$  )at ④  $\frac{24.20}{5.15} \times \frac{49.95}{898.95} =$ 

old stake

N  $64^\circ 09' W$  55.5 =S  $89^\circ 40' 20'' W$ 

898.95 =

or 19.5 E of P.R.

Marked "3+4" should be "4+5"

⑤  $272^\circ 43\frac{1}{2}' = (N 87^\circ 16\frac{1}{2}' W)$  460.7

o.o to ⑤ calc.

S  $89^\circ 40' = 27'' W$  ✓ 1309.2



125

13-41-6

continued

Since line as run checks OK  
and all the stakes line up it remains  
to pro-rate distance found from  $\frac{1}{4}$  to NWx.

Dist to $\frac{1}{4}$ (found) by direct meas	1307.
" " to Sec Cor (by trav)	1307.30
	2) 2616.2
	1308.1 ✓
	- 1307.
	-----
∴ more to cor W. →	1.1 shots

(Powells rec. = 1308.4)

1308.4	
1308.1	
1308.4	- 3 shot (.00023 shot per 100)
	= .023 "

∴ Sta. 800 x .00023 = .18 shot = 799.82  
" 1200 x " = .28 " = 1199.72

1308.10
799.8
508.3
399.9
108.4

126

August 31<sup>st</sup> 1932

Fair to overcast 75°

3 Halls. (H.C. Ray, Nash) 9:15 AM.

Set NE x Lot 5 as on page 123 + mm

S 0°-19½' E on true line = 90° off rec line.

0.0	I.P. NE, Lot 5	
229.	± road	84 + wly.
288.9	hub	-(drive down Pipe 1")
421.1	"	-( " " " " )
566.2	Drive 2" I.P. opp. old stake at top of bank.	(about 3" E of ls)

VIII	True	{	y. Pin = 10"	S 16¼' E	7.4'
	AZ	{	" . 11"	N 78°-20' W	35.75'

+ 27 = True Lake.  
593 "

Witnessed partial eclipse of sun 3 PM  
(Overcast sky obscured max. eclipse)

566.2	
421.1	
145.1	
	27

Drive 1" I.P. in top root of rotten  
Norway spruce for  $\frac{1}{8}$  Sec. con. #13.  
= station 1308.1 on 1.1' W of post.

VI  
Az. { W. Pine 10" N  $28\frac{3}{4}^\circ$  W 34.15'  
W " 6" S  $43^\circ$  E. 37.1'

S. o =  $19\frac{1}{2}^\circ$  E on W lot 2

0.0 I.P. NW x lot 2  
181.4 E Road.  
200.0 Hub (drive 1" I.P.)

514.6 Drive 2" I.P. opposite +  
1.25' W. of old stake.

Vals  $2^\circ 15' E$   
Az. { B. Oak 12" N  $2\frac{1}{2}^\circ$  E 4.9'  
Y. Pine strip 30" N  $60\frac{1}{4}^\circ$  E 10.4'  
(spike)  
VII  
+ 11.1 { B. Oak 8" N  $31\frac{1}{4}^\circ$  E 18.3'  
526 Show bus S  $84^\circ$  E

Correct sta 252<sup>ps</sup> on trial of lot 17 (Ely at  $90^\circ$ )  
8.73' hub on true " " = 252.20  
+ 2 E to S.  $90^\circ - 1^\circ 59' = 88.01^\circ$   
for true line.

Ph. Sly " "  
252<sup>ps</sup> + 52 = 304' water.  
252<sup>ps</sup> + 12 = 264.2 Drive I.P. ⊕  
" + 33.9 =  $\frac{285.9}{286}$  " " MC.

⊕ 99.2 { SW x chimney foundry N  $27^\circ$  E 75.5.  
IX. Strip { SE x cottage " N  $69\frac{3}{4}^\circ$  W 27.9.

$\frac{252}{86}$   
=  $\frac{166.2}{166.2}$  drive I.P. just S. of cottage.



(S o =  $20^\circ$ )  
Also drive I.P. 122' Sly  
from mid-pt. #17  
on corrected line

+ correct I.P. 40' Nly  
from center of #17.  
1.38 d

129

13-41-G  
continued

At Orig. MC on # Dec 13

= I.P. = Station 0.0 on page 118

Set rebar on N 88°44' W & ~~at~~ sight

on random huls 195.7

I { Orig. B.T. still alive N 47 1/4 E 6.6'  
 " " dead + topped S 3° W 2'  
 New Y. Pine 14" N 23 3/4 E 9.5'

Since shore here has S 57° W + N 53° E.  
 Turn off perpendicular from mean course of shore  
 + run N 34° W

- 14. shore

0.0 MC. Iron Pipe

187.3 huls

\* 300. " Dive I.P. for temp cor.

Thence calc. roughly to hit our pipe 40' N by  
 from mid point # 17. as S 50°-05' W. ✓  
 + brush out a line.

I.P. reads S 50°-06' W: 317.6' ✓

\* { Copper hach in 4" Norway S 31 1/2 E 5.3'  
 " " 2" Oak N 2 W 2.6'

Pt should be .37' N.

130

Note - for map:

{ Make Sec line E of 1/4 read S 89°-21' E  
 " " W. " " S 89°-40' W  
 " lot line to lake S 0°-20' E

6 1/2 17 + 18 + 19 Area = 1.73 A ±

Lot 1

" Strawberry Point "

Nov. 1940

Desired to lay off in 150' strips

running N from SW cor 15  
and parallel with South line= " " " Moore's Subd 2  
(for notes on Dr. Moore's Subdy  
Sec (4) page 2)

N. end subject to irregular division

October 30<sup>th</sup> 1940 Precast 50°

Rain + all + Jerome Walsh

11:00 AM to 4:30 PM

100 miles car.

Long. 89° = 51.6' W

Lat = 45° 56.5' N

Lat =

from map.

SW x 15

Identify Orig. SW cor Sec. 15  
by large Iron Pipe in swamp +  
our (rotted post).

Remains of SB line faint.

This cor checks reasonably close  
for alignment with several of the  
old stakes + Moore's Subd 2— A white cross has been set at  
pipe.Identify Orig. MC<sup>#44</sup> on NW Sec. 15  
by "marks on the Iron Pipe (down)"  
— Random NW found falls  
too far west at lake.Brush out \$, find our stake +  
Tack for point 400' E of SWx.  
H.C. MC has been washed  
away by hi water. The 8" Birch is  
here.Brush out old random NW found  
seems to fall 27' ± W of MC.

= N to E at SWx about 88° 10'

Nov. 1<sup>st</sup> 1940 Rain all day.  
Drove to Blue Lake To get  
tape + pins.Called at Minocqua Lbr. Co +  
interviewed Dan Bossart re  
Sec 15.

70 miles on car



133

15-40-5 E

November 2<sup>nd</sup> 1940 Rainy 45°  
 R. H. Hall + Jerome Walsh  
 11:00 To 4:30 1/2 da  
 100 miles on car.

SW cor

Ely

0.0

2" Iron Pipe

117'

leave swamp NNW

144

E old trail Nly

154.6

E 5" pipe 2" Spline  
enter marsh

395

hr

400.1

Tack in square hub  
found (call it 400.00)

Thence resume

+ 67

Dive 2" x 30" galv. I.P.  
flush for MC.

var o	{	N. Pine 5"	N 34° W	47.65
		W " 8"	S 40° W	65.5'

500.9

on line. Our bush to NW 39' ✓

SW x Nly

on random found.

0.0

2" I.P. at SW x 15'

862'

hr swamp in NW cor. do

890

hub found

(16.9' E)

930

enter 1/2 open spruce swamp

1300

hr do.

.01898 = 1° 05.2'

1315.4 rt &amp; E to MC 25.00

1328.9' hub &lt; to Meander Cor.

S to E 77° - 27'

25.6'

(var. on random here = 1° 27' E)

Dig for stake at mc. course + dist  
from BT (down)

Dive 2" x 30" galv. pipe

MC  
#44

S 32° E

26.4' (Rec.)

Oak 7" N 16 3/4° W 11.25'

Oak 5" N 88° E 8.85'

Hi water mark N. 37'

Swamps S 19'

var.  
1° 47' E

∠ at SW cor N to E = 88° - 11' (176.22)

true lines. 87° 06'

134

November 8<sup>th</sup> - 1940 overcast 30°  
 R. H. Hall, Jerome Walsh, D. Yelton  
 8:40 arrive Fence L.  
 5:00 lv "

Reference 2" 2. P at angle SW x  
 $\sqrt{1-48^2}$  } y. Pin 3" S 8 E 154'  
 do 5" N 49½ W 66.5'

∠ E to N to "True line" being run.  
 $87^{\circ}05'$      $174^{\circ}10'$     L

@ 889 R and turn left to MC  
 0'-01'  
 " in 427 = 0.12

To fall 12' E at MC.

Connect R W. .08' @ 889.

Call =  $87^{\circ}05\frac{1}{2}'$

∴ L to E = 149.81 = 150' on 40'

Stakes near line in "150' strips" beginning at SW x  
 with 1" x 30' galv pipes with wood  
 stakes alongside

∴ SW x Nly

150 - 300 - 450 - 600 - 750 - 900  
 = lot corners.

Since first 6 or 7 lots are to  
 be parallel with E I decide to  
 use E as E+W (pending  
 clearing weather + chance to observe  
 Sun or Polaris).

∴ @ 467' Ely from Sec. Cor  
 follow Top of bank Nly in  
 segments equivalent to L  
 width of lots  $\sqrt{(149.81)^2 \log 2.1755337}$

∴ ∠ W to N  $91^{\circ}48'$  = N  $1^{\circ}48'$  E 149.88

" " 149.88

N  $6^{\circ}55'$  E 150.9

N  $15^{\circ}05'$  E 155.15

N  $19^{\circ}24'$  E 158.82

N  $37^{\circ}24'$  E 188.58

N  $30^{\circ}45'$  E 174.32

11/9/40

Rain. Th. E by pocket compass to  
 shore 110 Thence NE  
 parallel to shore to oak tree selected  
 75' Thence N 37° W P.C. to  
 rock selected on N shore.

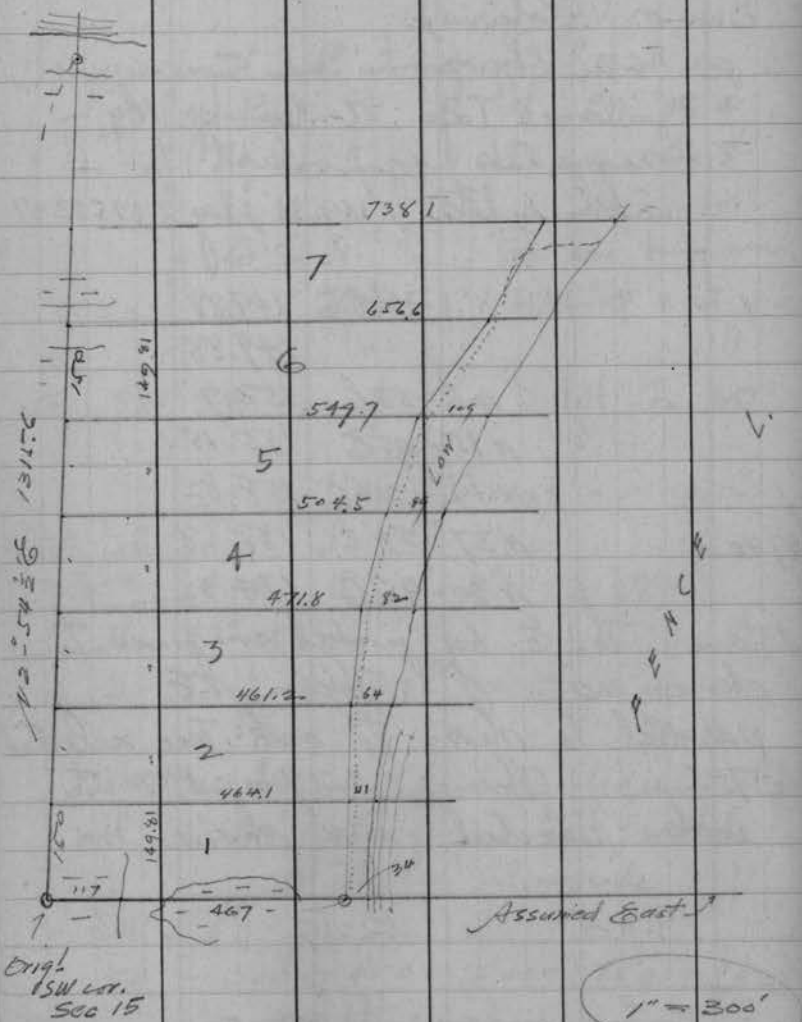
9:00 to 2:15

11/10

2 hrs. calc. at home.

137

15-40-5 E



15-40-5 E

138

Saturday Nov. 16<sup>th</sup> 1940

Partly fair 1" snow 30°

Hall, Jerome Walsh - Nelson

9:15 to 4:50 on job

Extend 4-7 E 110' from Trans.

Th. N — E 70' + drive

I.P. for S. cor end lot 7

Since this is unsatisfactory  
we decide to include what  
was lot 7 in lots N.

∴ approx. best shore frontage  
ret 4-7 lot 6 + I.P. for S end  
"lot 9"

Connect this with Δ on N. shore  
100' SW of NWx "lot 9" see sketch

N.B.



139

LW "Lot 9" (end of point)

X 23 = 31' W (336° 29')

- 20. water

0.0 9P sta (X) by oak tree

100. stake

174 ⊕ old road  
S 48° W 70  
N 30° E 60  
Th N 48° E

200 stake

281 P.P. for MC NW "lot 9"

309 To water at big rock  
2' ± E of W. edge "Traverse N<sup>60</sup> from (X)

① 44° 39' 175.

" = 14' from bank

20 " water

30' mid. ord To shore

② 5° 42' 147.

" 5' from bank

20 " water

30' mid. ord.

③ 343° 12' 55'  
= N 16° 48' W

②③ 352° 128 To

extremity of rock reef

15-40-5 ⊕

140

④ 258° 27' = 578° 27' W 167.

20 ft from water except @ 30 (30')

⑤ 245° 11' = 565° 11' W 77.4

To 9P @ 281 on 40" 9"

" " to 156° 29'

180  
23-31 ✓

Continue track along bank SW

⑥ 253° 46' 150. 20' in  
= 573° 46' W@ 100 Stake on line  
(Use this as N end lot line)

@ 75 br plateau

@ 150 min bro 86 60' ±

⑦ 223° 37' 50.  
= 543° 37' W⑧ 257° 40' 100.  
= 577° 40' W

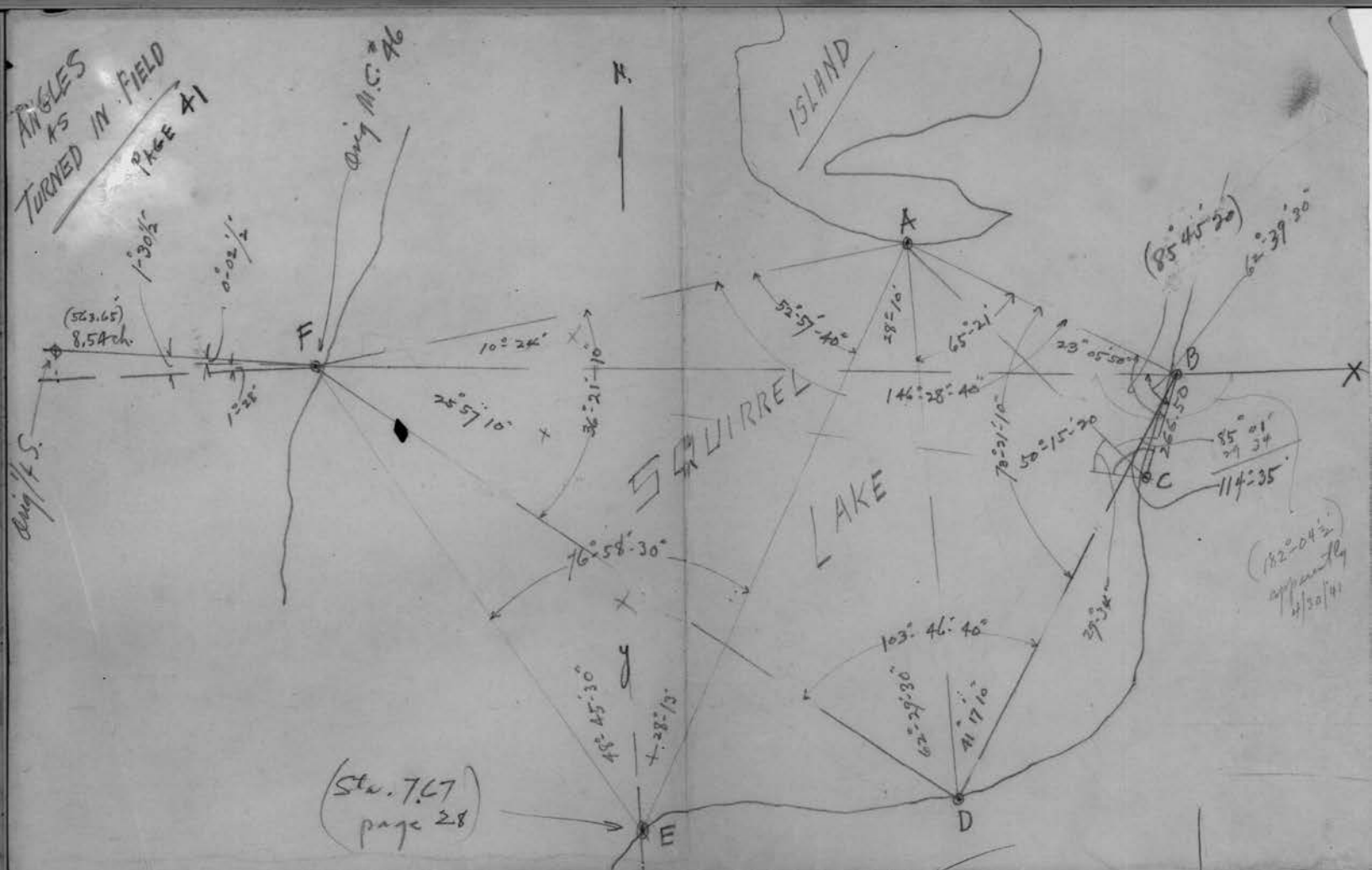
from ⑧ NE + marsh to S 30° W 43 steps.

@ 30' NE pt low grassland.

Track thence on reef 12' from water



ANGLES  
AS  
TURNED IN FIELD  
PAGE 41



At F AFD

- ① 10°-23' ② 31°-12'-30" (10°-24' 10")
- ③ 20°-48' ④ 52°-00' (10°-24' ✓)

BFD

- ① 25°-57' ② 51°-54' ③ 77°-52' ④ 103°-49'
- ⑤ 128' ✓ ⑥ 20°-58' Def. & SW.

At E

FEA

- ① 28°-14' ② 56°-26' ③ 84°-39'-30" (28°-13'-10")

FEA

- ① 76°-59' ② 153°-57'-30" (76°-58'-45")
- ③ 230°-55'-30" (76°-58'-30" ✓)

At D

FDA

- ① 62°-29'-30" ② 124°-59' (62°-29'-30" ✓)

ADB

- ① 41°-17' ② 82°-34'-30" ③ 123°-51'-30" (41°-17'-10" ✓)

At A BAD

- ① 65°-21' ② 130°-42' ✓

DAE

- ① 28°-10'-30" ② 56°-20' / 30" ③ 84°-30'-30"
- 28-10-10" 28-10-10"

EAF

- ① 52°-57'-30" ② 105°-56' (52°-58' ✓)
- ③ 158°-53' (52°-57'-40" ✓)

OVER

20

S  
103°-55' N  
(rad.)

<p>41 17 10 62 29 30 103 46 40</p> <p>62 29 30 85 35 20</p>	<p>102. 111. 430. 910. 9.011</p>	<p>6/19 1 1/2 7 1/2 2 1/2 20 18 11. 220. 941.</p>
---	--	---

04 feet 0.94

N. 06. 65. 65 N. 100° 1/4

① 266.50' ② 266.62  
BASE (BC)

At B from F-B - Page 24  
① 62° 40' ② 125° 19' 30" ③ 187° 58' 30"  
 $\frac{18}{60}$   
 $\frac{60}{62\ 39\ 45}$   $\frac{30}{62\ 39\ 30}$

D.B.F. = 50° 15' 26"

① 50° 15' 30" ② 100° 31' ③ 150° 46'

A.B.F.

① 23° 06' ② 46° 12' ③ 69° 17' ④ 92° 23' 30"  
 $\frac{30}{23\ 05\ 50}$   $\frac{40}{23\ 05\ 40}$   $\frac{30}{23\ 05\ 52}$

A.B.C.

① 85° 44' 30" ② 257° 15' ③ 343° 01' 30"  
 $\frac{30}{85\ 44\ 30}$

At C A.C.B.

① 85° 01' ② 170° 02' ③ 255° 03'

F.C.A.

① 29° 33' 30" ② 59° 08' ③ 88° 42' 29" 34"  
 $\frac{34}{29\ 34}$   $\frac{60}{88\ 42\ 29}$

At B page 21 (Sta. 4.79 page 29.  
defc line from S.E. to A (on island).

L ① 15° 57' ② 31° 55' 30"  
 $\frac{60}{15\ 57\ 30}$

Reverse ③ 47° 54' ④ 63° 53'  
 $\frac{174}{15\ 58}$   $\frac{180}{15\ 58\ 15}$

Z.F.

① 47° 00' ③ 94° 01' 30"

F.Z.A.

① 41° 38' 30" ② 83° 17' ③ 129° 58'  
 $\frac{77}{41\ 38\ 30}$   $\frac{60}{41\ 38\ 40}$   $\frac{60}{41\ 38\ 40}$

S.E. to W to F

① 122° 22' ② 244° 44' ③ 122° 22' 20"  
 $\frac{20}{122\ 22\ 20}$

41° 38' 30"

122° 22'