

DLDFLDBK 105

# INDEX

PAGE	Sec	Town	RE	Survey for	NOTES
1-70	26/14/ 23/24 15/22	37	10	ONEIDA CITY INVESTMENT Co.	Whole Book.

Sec. 26

July 10<sup>th</sup> 1929 fair - warm

H.C. Ray H. + Marshall Hall with Jay French.  
9 AM

Identify orig cor. to 26-27-34-35 as perpetuated by D.H. Vaughan. Set point by intersection of his rec. dist from his two stumps which remain OK. Find old stake hole + burned off post .002 W. of point and drive 1/4" Pipe in said stake hole for corner.

(No evidence remains of the orig. spruce + Aspens.)

(V 3° E)	Mark a + on 3'x5' boulder	S. 46° E.	.92 = 60.7'
(V 0:05 E)	D.H.V.'s W. Pine stump	S 86° E.	.14 = 9.3'
"	" " "	S 15 1/2° W.	.10 = 6.6'

D.H.V.'s road stakes 50 lbs S+W remain

Center of present road is .16<sup>103</sup> W.

Ledge of rocks noted by US deputy consists of about 3 boulders.

Run E. on Var. 0:05' E. from this corner

—	32 <sup>214</sup>	fence N+S.
—	.16	⊕ road N+S.
	0.0	I.P. at cor.
	9.11	hub
	14.97	"

(resume on page 3)

- Note -

In the field work the E. line Sec. 26 was assumed as Meridian (note on page 11) and all courses in pencil are on that basis.

On December 9<sup>th</sup> 1929 these courses were referred to the True Meridian (pages 69 + 70). The Assumed Meridian is found to be N 0° 42' W.

∴ Add 0° 04 1/2' to all SEly + NWly courses  
Subtract " from " NEly + SWly "

See map filed # R 29612

Sec. 26

17½ Enter hay field  
20.30 Set hub for temp 1/8

40.60 " " in field for temp 1/4 S.

40.86 at  $\angle$  North .467 for 1/4 S.

July 26th  
② Drive I.P. + scribed post + pile rocks around  
In open field - no bearings near.

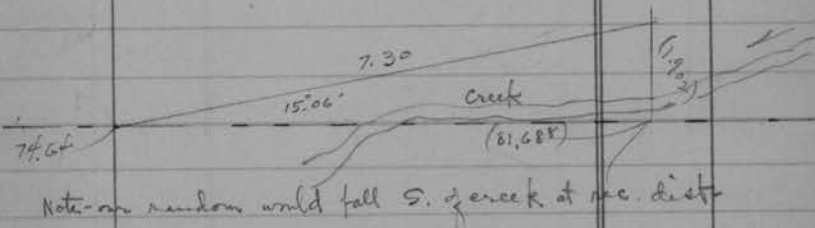
45.31' hub

74.64 hub + turn def.  $\angle$  (L) to avoid creek.  
① 15°-06' ② 30°-12½' Reverse 45°-19'-60" 24½'

81.94 DHV.  
74.64  
7.30 to go.

Thence along said deflected course  
7.30 hub (7.56' DHV. rec)

Search 2 hours for DHV. bearing trees. Everything buried.  
Plenty of stumps - (Will attempt to get more direct  
information as to location of creek from DHV scratch book)  
(7.34<sup>3</sup> intersect N + S random 979 N of post.)



§ 26

§ 26 - continued -

∴ 81.769 at N. to corner .934  
 (.01142 = Tan  $0^{\circ} 39 \frac{1}{2}'$ )

Note: Traverse around 26 indicates

.005 excess N<sup>9</sup>

.069 " E<sup>9</sup>

Random line angles out only  $0^{\circ} 01'$

Conclude we gained about .05 on § 26  
 (between 50 & 70 ch.)

∴ <sup>5392.6</sup> 81.72 fell <sup>7</sup>.934 S. of corner.  
 40.86 .467 (.01143)

(Resume on page 7)

July 12<sup>th</sup> 1929 Same party - Overcast

25-26-35-36

Find DHVs corner, which he set by double proportionate meas in 1907 by locating two of the right sort of stumps (charred) which measured exactly .37 apart. DHVs old post found down + charred at intersectn of his record ties.

(3) We drive new scribed W. Pine post in old stake hole + re-mark his stumps

V 1:58'E	}	DHVs W. Pine stump 28° N 32° E .32 = 21.1'
		- - - 16° N 32 3/4 W .47 31.0'

Run North on a random from this post after piling up rocks around corner - Low ground - alders - V. 1:58'E.

— <sup>40'</sup> .60 N. bank rapid stream runs W Sw

0.0 Sec Cor.

.35 leave bottom

.979 Intersect random traverse line (at 7.343)

+ turn ← W to N.

① 102:48' - ② 205:35' ③ 308:24'

2.98<sup>5</sup> hub on low ridge (Resume on page 9)

⊕ Sec 26

5½ to 8 ± neck of ash swamp = 360' - 530' ±  
 12.55' hub + leave bottom  
 18.24' " on ridge

20.00 enter Spruce + Tan. Swamps NE Sec.  
 (Sand swamp hrs. 6 or 7 SW.)

33.± leave " NE Sec.

34.56' hub

35.75 Enter swamp.

36.24 6'x8' boulder.

2534.3 = 38.399 hub at S. edge grading County Highway <sup>18' wide</sup>

lay off A base along road west 10.00  
 then across open field to A 15.029

+?  
 2541.3 of road  
 - .7  
 2542.6  
 on true line

40.475' at L. E. .15' for 1/4 S.

Drive 48" x 1½" GP. + Cedar post.

⑥ Pocket compass bearings Aug. 2<sup>nd</sup>

{ W. Birch 5" S 30° E. 54.5' = 36.0'  
 { W " 8" N 76° W. 1.36 = 89.8'

51.055' hub (at A)

(Resume on page 11)

$$c = A \sin A + B \sin A$$

$$41 = 13' \cdot 50''$$

$$8 = 13' \cdot 30''$$

$$\frac{127}{70} = 27' \cdot 20''$$

$$33 = 27' \cdot 20''$$

$$\text{Cos. } 83426$$

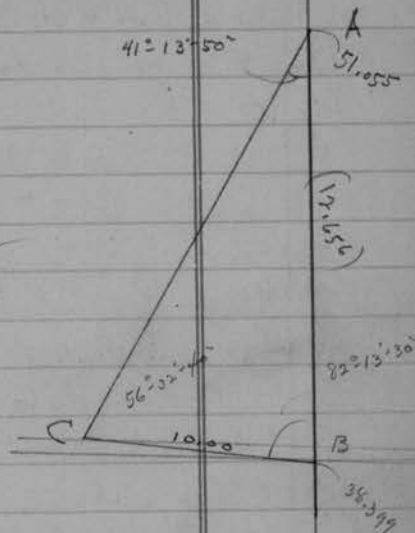
$$\times 2$$

$$\frac{166852}{12.658}$$

$$\text{By lat + dep. } 12.656 \checkmark$$

$$38.399$$

$$51.055$$



→ ∴ 38.525 ch. on true line = ⊕ Highway hrs. S 86° E ±

2671.3

- 2542.6

128.7 N. of Hwy.

1/4 N of Hwy 'C' E line 26

July 13<sup>th</sup> 1929

Ray, Keith, Marshall + H.C. Hall + Jay Tranch. 9 AM.

Continue N. on same random (V. at station 97° 1' 58" E)

52.16<sup>+</sup> hub

52.97 1/2  $\Phi$  Soo Ry. tract

80.95 right  $\leftarrow$  E. 31<sup>2</sup> to Orig cor to 23-24-25-26

(See page 7) for location of this point

(9)

Drive I.P. + scribed cedar post in oat field

V 3<sup>0</sup> E

W. Pine stump 14" S 68<sup>0</sup> E. 1.559 = 102.9'

W " " 16" N 74<sup>3</sup>/<sub>4</sub> E 1.56 103.1'

fence (N+S) hrs. East 64 42.2'

All orig marks etc destroyed when land was cleared. Identified by D.H.V.'s line + was E.

80.95) 312 (.00585 = Tan  $\theta = 13' 15"$  to correct E.

Note. Decide to use this line (corrected E  $0^{\circ} 13' 15"$ ) as

Assumed Meridian for convenience V.  $1^{\circ} 45' 6"$

$1^{\circ} 58' 6"$  Var.

$10^{\circ} 45' 6"$

Continue N on orig. random line

81.224 hub in oat field

(See page 27)

6138' 93. old road N 84

96.075 hub

(Resume same random page 13)

2495.8'

52.96<sup>7</sup> (on correct line) =  $\Phi$   $\Phi^{\circ}$  R.R.

$\rightarrow$  N 87<sup>0</sup> 43' 40" W (calc.) course of "

### Section Corner near Blumerich Barn

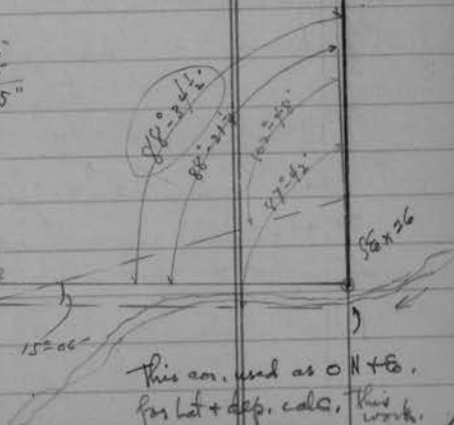
$\frac{80.95}{40.475} \text{ at } E .156 \text{ for } 1/4 S.$   
 $- 38.399$   
 $= 2.076 \text{ N of hub at road side}$

$102^{\circ} 48'$   
 $87^{\circ} 44'$   
 $+ 86^{\circ} 39'$   
 $+ 88^{\circ} 11'$   
 $88^{\circ} 34'$

$58^{\circ} 34' 30"$   
 $39 15$   
 $87^{\circ} 55' 15"$

$\therefore S 88^{\circ} 34' 30" E . 81.72 \text{ ch. True line ?}$

Random  $\Phi$  26 (page 1) 1)  
N 87<sup>0</sup> 55' 15" W



Random  $\Phi$  26  
Assumed Meridian  
(correct E 96)  
80.95 ch.  
V = 12' 45" E.

$\theta = 13' 15"$



⊕ Sec. 23

100.618 st.  $\angle$  E.  $.50^3$  for  $\frac{1}{8}$  S.

Point falls just S. of shoulder of ridge  
opposite W. end irregular pond SE + overlooking <sup>same.</sup>

Drive dry pine post, scribed - Rocks -

V 1:45 <sup>h</sup> E Aug 1 <sup>st</sup>	{	W. Pine stump $16^{\circ}$ N $40\frac{1}{2}^{\circ}$ E	91 = 60.1'
		W. " " $14^{\circ}$ N $61\frac{1}{4}^{\circ}$ W	67 <sup>5</sup> = 44.6'
		⊕ N + S road brs. W.	2.75 = 181.5'

102.35 hub + triangulate over slough (base  $3.90^3$ )

111.16<sup>3</sup> hub N of  
837

112.00

120.28<sup>6</sup> st.  $\angle$  E.  $.69^4$  for  $\frac{1}{4}$  S. between 23 + 24

Point falls on ridge

Drive W. Pine post - scribed - Pile rocks around

V 1:45 <sup>h</sup> E Aug 1 <sup>st</sup>	{	W. Pine stump $22^{\circ}$ S $42\frac{1}{2}^{\circ}$ W	1.10 <sup>6</sup> = 73.0'
		W. " " $28^{\circ}$ S $68^{\circ}$ E	74 <sup>3</sup> = 49.0'

(with tall splinter standing on SE side)

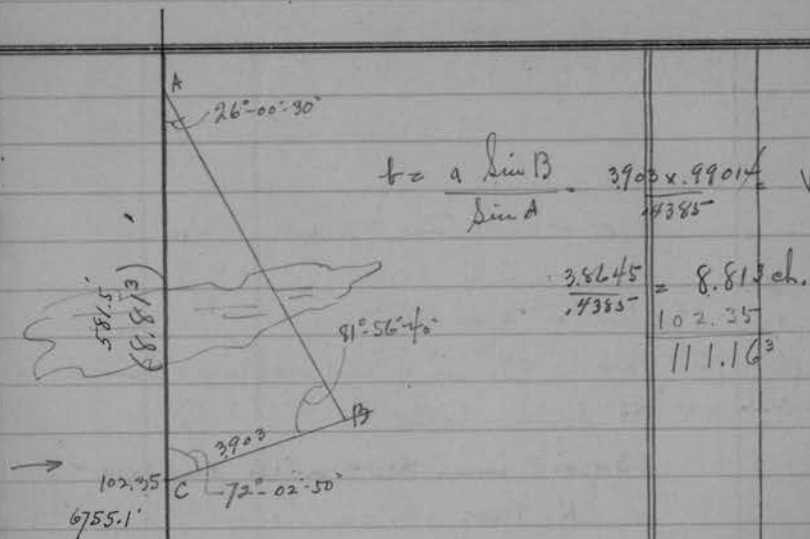
⊕ road brs. W. 3.85 = 254'

We were unable to find the original noted by  
DAV. (Burned and some of stumps removed)

137.23 hub

(.858) E.

(Resume on page 15)



## E Secs. 23 + 14

- Continued from page 13 - same random -

145.80<sup>3</sup> hub in open flat (941) E.

160.75<sup>3</sup> hub. Search + find nothing - timber all down - badly fired. It has been 23 years since DHV noted this corner as OK. Does not say he made a post nor marked bearings. His sketch of the (logging) road does not agree with present road.

Resume on page 17

- Later search + find remains of a down B. Oak + Sugar maple (about 3.30 ch E. of road) but can not find any stake hole or other convincing evidence of cor. (One old blaze N of this spot was found by H.C.) The oak + Maple remains are in about the right relative position, but so far we have no other factors to prove this the corner. (DHV did not run nor meas. the line between 23 + 24)

→ See page 45-49 for our line between 3 + 24 and our identification of this corner

Secs. 23 + 14

continued -

on same random

159.62<sup>3</sup> pt. - E. to orig. cor. 13-14-23-24 as

described on page 49.

(22) Set 4"x4" scribed pine post + pile rocks around. <sup>S.P. later</sup>

July 31<sup>st</sup> } Burned W. Pine stub 40° N 67° W .43 = 28.4'  
 " W " stump 50° N 62° W 1.62<sup>5</sup> = 107.2'  
 (W. Birch 6" on bark) N 46° W .51 = 33.7'

Road N + S. planned here. no bearings available E.

160.77<sup>9</sup> Intersect in with random N 24 see page 51

∠ S to E. 82°-07'-30"

(∠ S to SE to cor. = 42°-58' 1.579)

July 20<sup>th</sup> 1929 fair - cooler.

Ray + Marshall Hall with Jay French.

160.75<sup>3</sup> Continue N. on same random.

Course here reads N 1°-10' E with the var. I

started this line on (1°-58' E)

181.75 about ⊕ graded road; hrs trifle E. of N here

183.28<sup>5</sup> hub

193.50<sup>5</sup> about ⊕ same road - hrs W of N. here

237.927

8.519

11

12

237.95<sup>5</sup> N  
7.59<sup>6</sup> E

St. 26

237.927

- 159.623

78.304

8.519

1.076

7.443

(.09505 = Tan

5°-25'-45"

Cor. 995516

∴ true distance 78.657

N 5°-12'-36" E.

Sin 90775 = 7.14 = E

Cor. 99587 78.33 = N

5°-25'-45" = 13-15"

Note - Did not look for this  
 445 May be there.  
 (Our finding cor. relied on  
 of pro-rating them)

159.62<sup>3</sup>

11

13

24

159.623 N  
.458 E

St. 26

159.623

- 80.95

78.673

1.076

.312

.764

(.00971

correct in E. perch.

= Tan 0°-33'-20"

- 0 13 15

N 0°-20'-05" E.

Cor. 99996

Sin .00562 = .458 E

Random N. 0°-15' W. 76.473

182-206 76.676

23

24

25

26

80.95 N  
.0.0 E

80.95

+ 78.673

159.623

+ 78.332

237.955

.458

.458

7.14

7.518

Continue N on same random.

200.00 set temp. marker

202.05<sup>3</sup> set stake on line (for chain guide)

211.75 line of road West - junction about 1 ch. W. of line →

214.30 ⊕ road again (bvs N 30° E ±)

217.04<sup>8</sup> set guide picket on line.

233.90<sup>9</sup> hub in open field - we are west of everything here.

We identify orig. cor. to 11-12-13-14 by remains of sugar + hole where W. Pine was blown out. This tallys with Mr. French's statement - that the corner was in the road and 45 feet S. of fence G. Fence has been removed but its location is apparent (We look all afternoon for 1/4 S and NE between Secs. 11 + 12; find nothing.)

July 27<sup>th</sup> 1929

Ray, Marshall + HC Hall

Drive steel car axle at orig. cor. 11-12-13-14

Comes in E. ditch of grading. (N + S. Turnpike)

W. Pine stump 14'	N 63° E.	16 <sup>7</sup>	11. feet
Spence 20' (landmark)	S 46° W.	1.097	72.4

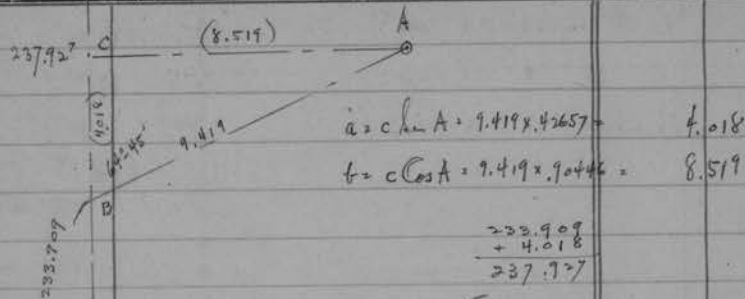
SE x 24 (in lake)

233. 90° Turn deflection  $\angle$  (R) to orig corner  
 S to N @ 115°15' @ 230°29½ = 64°45' 9.419 ch.  
 $\therefore$  237. 927 at  $\angle$  E. to cor. 11-12-13-14 8.519 ch.

July 23/1929 Overcast to fair  
 Marshall, Keith, Ray + Mc. Hall + Jay French.

French shows us an orig. post. But not far north of RR and which local people have mistaken for BT to Mc. on W. side Twin Lake bet. 24 + 25. It is a perfect specimen of genuine old postmarking, on a large-live W. Pine. However it is marked incorrectly (Sec. 19 I believe) and is about (40±) rods SE of where E+N lines of Sec. 25 enter lake. We conclude the orig. surveyors camped there + some one was practicing with sights. No tree of this kind is called for in this vicinity.

We find DH Vaughan's MC. on line between 24 + 25  
 " his post at water's edge and 2 bearings which agree at 1°50' E var. We drive 7 green tamarac post alongside DHV's old post. (resume on page 23)



(See diagram page 18)

DHV's	Dead Tam. 5" N 62 $\frac{3}{4}$ ° W	1.25 = 82.5'
(10)	" " 4" S 70 $\frac{7}{8}$ ° W	.95 = 62.7'
New	Tamarac 6" N 72 $\frac{1}{2}$ ° W	1.29 <sup>4</sup> = 85.4'
"	" 8" S 53 $\frac{3}{4}$ ° W	1.27 <sup>8</sup> = 84.3'

Also find DHV's post for orig. MC on Range line on S. bank  
 (11) from which orig. Tam. with boxing to S 68° W (1° 58' E. Var.)  
 Tamarac 7" S 82° W 1.50 = 99.0 } 1.00 ch.  
 DHV. MC bet. 24 + 25 N 40° W .72 = 47.5' } 66'

Run West on Random course between 24 + 25  
 calc var. 3° 39' W. (from DHV figures in County record)  
 (Starks book would make it 1° 47' W. var.)

- .50 DHV. rec. to Sec. cor in lake,  
 which he pro. rated between N + S Meander corners.
- 0.0 DHV's MC on § 24
- 11.80 leave Swamp NE + SW
- 12.27<sup>4</sup> hub
- 14.831 "

25.96 hub

## Sec. 24

38.33 hub + turn ← W to S. to D.H.V. old charred post for 1/4 S. His two stumps check OK  
SE stump bears scribe marks yet  
74° 24' ✓ .618 d.

∴ 38.496 at ← S. to D.H.V. 1/4 S. 595  
Continue on same course on same ran door.

40.927 hub

(43.303 .669 S. for 1/4 S. (did not set this))

46.189 hub (Needle reads Var. 4:35 W. here)  
49.016 " + quit for the day

July 24<sup>th</sup> 1929 Same party - misty - continue on line -

hub

63.86 "

69.13 hub

80.00 "

86.45 " in edge of field NW + SE. (5' E of fence)

(Resume on page 27)

38.496 H.F.H.  
38.33 D.H.V.

38.33 | .166 amp  
|.00433 perch.  
× 86.73

+ 86.3255

- 87.106

pro-rate for sec. of orig. cor.

38.496 | 595

.01546 = tan α = 53° - 10'

× 87.106

1.347

calc. correction at 87.106

.01546 × 40.303 = .669

87.106

+ .50

2) 87.606

from cor. in lake

43.803

- .50

Ste. 43.303 for 1/4 S. at

to correct S at 1/2 total

dist.

43.303

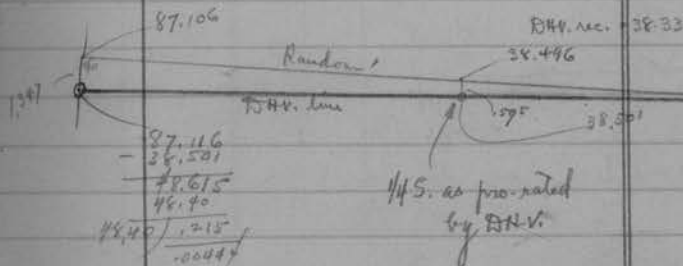
- 38.496

4.807

difference on ran door line

in location of 1/4 S.

- We did not set one







120.00 hub

128,446 N. 2 S.  $4.425$  and set  $\frac{1}{4}$  S.

⑧

July 26th

Drive Iron Pipe + scribed cedar post  
in hayfield, pile rocks around.  
No bearings near. at  $3^\circ E. Var.$

Large straw pile hrs. N  $57\frac{1}{2}^\circ W$ .

Six White house in grove.

(on NE  $\frac{1}{4}$  Sec 27)  $581^\circ W$ .E. cupola warehouse  $538^\circ W$ .W. end hay barn  $524^\circ E$ .W. Peak hay barn  $187^\circ E$ .

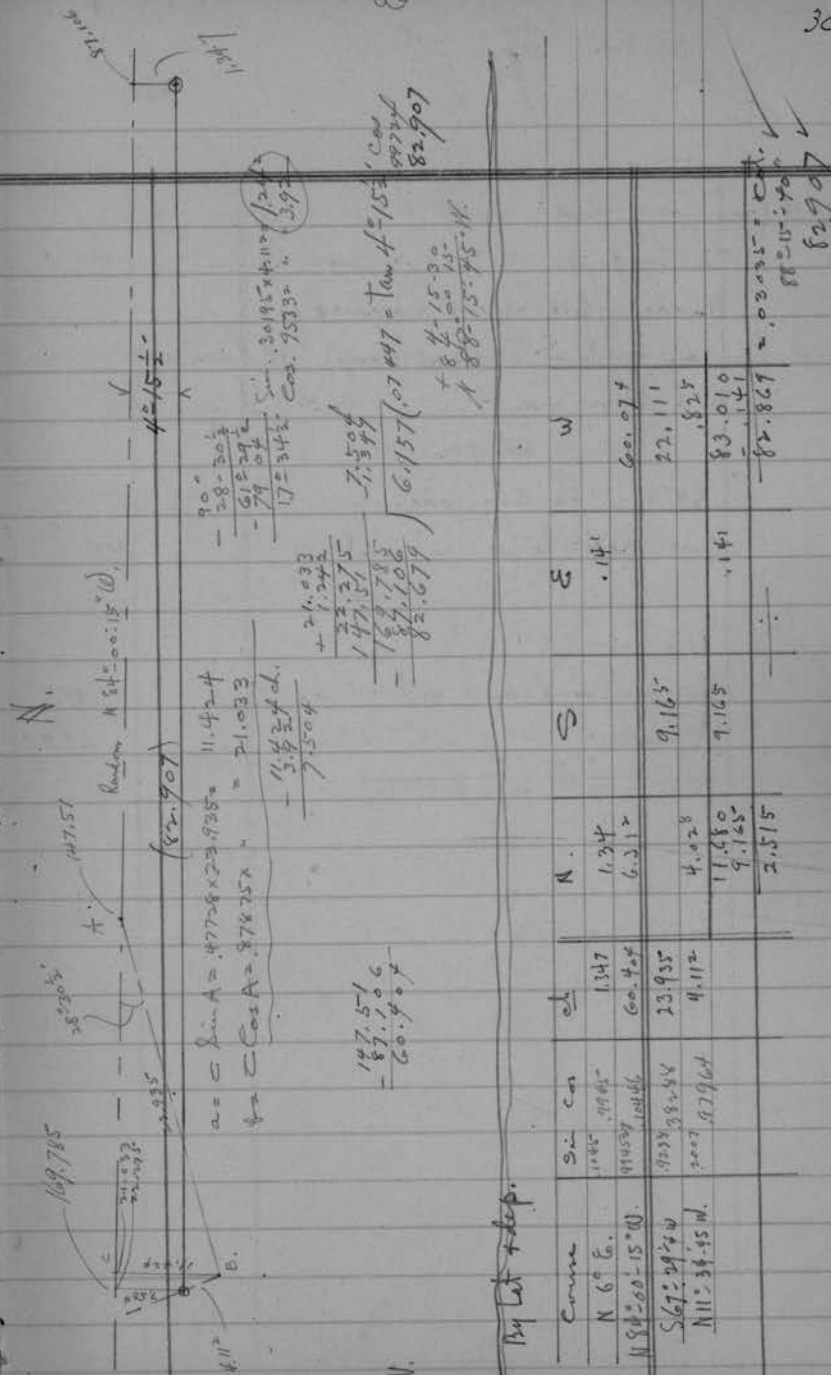
(at 99.60 on random)

137.31 hub

147.51 " + begin Traverse to Sec. Cor.

(random line. =  $N 84^\circ 00' - 15" W = 275^\circ - 37' - 45"$ )

(4 times, E to W)

①  $247^\circ - 29' - 15" = S 67^\circ - 29' - 15" W$  23,935 ch.② NE to NW twice  $79^\circ 04'$   
N  $11^\circ 34' - 45" W$ . 4,112 ch. toorig. corner 22-23-26-27  
(See page 31)We correct + stake the true line E.  $\frac{1}{4}$  S.

We find town road built N & S over orig. com.  
to Secs. 22-23-26-27 and a port on  
W. side of fill offset carelessly.

We find Orig East Tamarac (stump) OK (Harpes plain)  
and drive from Pipe in West end of road.  
(1/4" well point)

July 25/47

(7)

by S 89° W. <sup>42'</sup> from orig. stump V. 2° 36' E. (cont Rec)  
Meas. north to present creek is 1.60' 105'  
not 1.10

V 3° E

Bearings

Iron Bolt in S. mud sill of bridge N 1° E 1.63<sup>5</sup> 107.9'

Spruce 9" S 85°-26' W. .82<sup>8</sup> 54.6'

Road North br. N 54° E.

## LW Sec. 26

July 25<sup>th</sup> 1929

4 Halls + Jay French

Turn 93°-15' (2 times) E to N. off random

at Orig. SW 26 and run N. on random  
course (V 3°-E) (had not tied into NW 26 at this time)

N 1°-10'-15" W. (Random)

0.0 Orig. corner to 26-27-34-35 (See page 1)

23.16 scratch 1/2 arrow (on fence post 203 lbs E.)

40.717 at 2 E. 24° for 1/4 S.

④

Drive 1 1/2" x 3 1/2" steel shaft in potato field

No bearings Near.

County highway bis. N.

2.14

140'  
147'

42.86 County highway E+W.

43.15 hub

53.16<sup>5</sup> RR spike for hub on ridge S. of RR .316 E

54.23 County RR (Soo Line) E+W by

75.39' hub (RR spike)

(def. c(R) to sta ① on N traverse 31°-37'-35" 2.341 ch)

Turn deflection c(R) to Orig. cor. Secs. 22-23-26-27

4°-34' 1/2" 6.064 ch.

N 3°-24'-15" E. 6.064

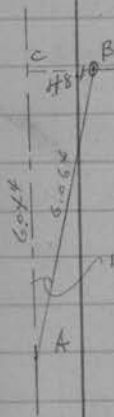
∴ 81.43<sup>5</sup> at 2 E. to corner

484 ch.

$$\begin{array}{r}
 - 179^{\circ} - 60' \\
 - 73^{\circ} - 75' \\
 \hline
 86^{\circ} - 45' \\
 - 87^{\circ} - 55' - 15'' \\
 \hline
 \rightarrow 1^{\circ} - 10' - 15''
 \end{array}$$

$$\begin{array}{r}
 4^{\circ} - 34' - 30'' \\
 - 1^{\circ} - 10' - 15'' \\
 \hline
 N 3^{\circ} - 24' - 15'' E. \\
 - 3^{\circ} - 23' - 40'' \checkmark \text{ as carried N+W around} \\
 \hline
 35'' \text{ out.}
 \end{array}$$

$$\begin{array}{r}
 2 | 81.435 \\
 \hline
 40.717
 \end{array}$$



$$\begin{array}{l}
 4^{\circ} - 34' - 30'' \\
 \sin .0798 \\
 \cos .99681
 \end{array}$$

$$\begin{array}{l}
 a = c \sin A = .484 \\
 b = c \cos A = 6.044 \\
 = 75.39' \\
 = 81.435' \cdot .484 \cdot .00594 = \tan 0^{\circ} - 20' - 20'' \\
 \text{correct } 6.
 \end{array}$$

$$\begin{array}{r}
 4^{\circ} - 34' - 30'' \\
 - 1^{\circ} - 10' - 15'' \\
 \hline
 N 3^{\circ} - 24' - 15'' E.
 \end{array}$$

$$\begin{array}{r}
 0^{\circ} - 20' - 20'' \\
 - 1^{\circ} - 10' - 15'' \\
 \hline
 N 0^{\circ} - 50' - 5'' W.
 \end{array}$$

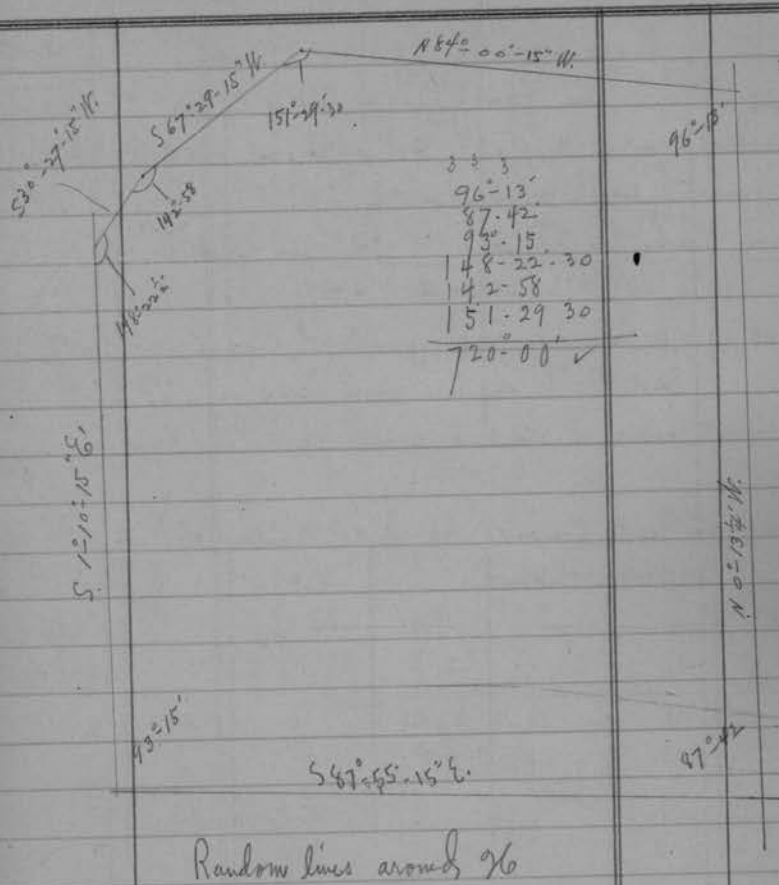
∴ 54.21<sup>2</sup> on Correct line. Intersect County RR.

Note. DHV says in notes that he drove Iron Rod in  $\Phi$  road E/W for  $\frac{1}{4}$  S. bet. secs. 26-27. He does not call it orig. but used a straight line from Sec. cor to Sec. cor. Therefore we decided to place the  $\frac{1}{4}$  S at the mid point on HW or, S. of road.

Later - find that the recorded plat of Pennington laid out 40 or more years ago by Dahl bears out our theory.

Corrected HW 96 passes thru RR section house center window on S. side, + E of chimney; (E. casing of " " " " possibly 2' E of " )

At traverse sta. (1) on HW 96 turn NE to (2) (3 times)  
 $142^{\circ}-58'$



N + S  $\frac{1}{4}$  line Sec. 26  
E + W  $\frac{1}{4}$  " " "

July 26<sup>th</sup> 1929

HC H. Ray + Marshall + Lay French  
Run N + S  $\frac{1}{4}$  line from S after setting South  $\frac{1}{4}$  S. <sup>page 3</sup>  
(calc. course N.  $0^{\circ}24'50''$  W) Turn  $\angle$  W to N  $87^{\circ}30'4''$   
from sta 40.87 on random E.  
Hub north by RR track - All open fields.  
Fall .01 ch. W. of flag at N  $\frac{1}{4}$  S.  
Move over onto line + set points at County Hwy for E  
(Mark Notch on RR snow fence on line)  
Line crosses at E. end small pond S of road.

Run E + W Quarter line in 96 by 2.01' N. (along RR) from W  $\frac{1}{4}$   
to stay in highway  
 $\angle$  S to E.  $85^{\circ} \pm$

41.30' Intersect N + S Quarter line.  
82.43' " Random E at 38.65'  
 $\therefore$  82.58' " E 26 1.83' S. of E  $\frac{1}{4}$  S.

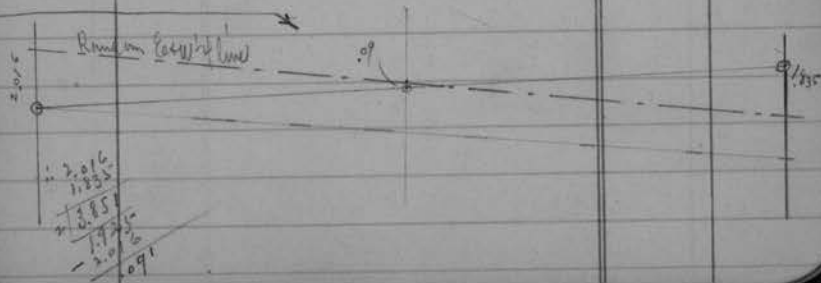
Move .09 S. at intersection with N + S line and (Aug 2<sup>nd</sup>) drive  
car axle at Center of Sec. 26  $4''$  below surface of road.  
This Car axle marking " 5 " -  $1.045'$  S. of E 29' grading  
" 5 " -  $.022'$  N. of an iron bolt for line  
No bearings near. " 5 " -  $.22'$  S. of " " " (RR of line)  
Paint a red stripe on rocks opposite to drive an oak post marked  
"  $16\frac{1}{2}''$  on N + S  $\frac{1}{4}$  line + 1 rod S. of center (" comes in pond)

Traverse of Sec 26 - True lines (Beginning at S E x)  
(Assuming E as Meridian)

Course	Sw Cos	ch.	N.	S.	E	W.
$\frac{1}{2}$ North		80.95	<sup>5372.6</sup> 80.95			
$\frac{1}{4}$ N $88^{\circ}15\frac{3}{4}'$ U.	.99954 .83033	82.908	<sup>1657</sup> 2.514			<sup>5469.4</sup> 82.870
$\frac{1}{4}$ S $0^{\circ}50'$ E.	.99969 .99969	81.435		<sup>5374.1</sup> 81.426	<sup>781</sup> 1.184	
$\frac{1}{4}$ S $88^{\circ}34\frac{1}{2}'$ E.	.99969 .02486	81.72		<sup>134.1</sup> 2.032	<sup>5391.9</sup> 81.615	
			<u>83.464</u> <sup>83.458</sup>	<u>83.458</u>	<u>82.879</u> <sup>82.870</sup>	<u>82.870</u>
			.006	error	.009	error

Calc for N + S  $\frac{1}{4}$  lines.

	N	S	E	W
S $88^{\circ}34\frac{1}{2}'$ E		40.86	1.016	40.847
North	80.95	80.95		
N $88^{\circ}15\frac{3}{4}'$ U	41.454	1.257		41.435
		<u>82.207</u>	1.016	<u>40.847</u>
		-1.016		-40.847
		<u>81.191</u>		.588
			-0.0724 = Tax	
			N $0^{\circ}24'50''$ W	
			<u>81.191</u>	
			5358.6	



## LW Sec. 23

July 27<sup>th</sup> 1929

H.C. Ray + Marshall Hall

Run N. on #23 (random) by continuing on deflection course  
on which we came into cor. post S.

N  $3^{\circ} 23' 40''$  E (figures N  $3^{\circ} 24' 15''$  E on page 34)  
-3 23 40  
35' at.

Traverse on hill (Sta. 75.39' page 33) Sight N. thru corner

o.o Orig. cor 22-23-26-27

60.00 angle point - spike in E. edge road grading:

We identify D.H.V.'s "Sec. cor." by his stump,  $\phi$ K ( $0^{\circ} 50'$  W. var.)

- point comes in  $\phi$  road. opp. his post.

@ 60.00 turn def  $\angle(L)$  to D.H.V. cor.  $0^{\circ} 50'$  9.43 ch.

$\therefore$  69.43 Vanhous corner, supposed to be corrected E.

+ .03 $\pm$  from his station 79.38 according to his notes!

69.46 line of new fence Ely

W-23+14 continued

July 29<sup>th</sup> 1929 fair 80° F.

HCA, Ray + Marshall

Continue traverse from 60.00

N.  $2^{\circ} 41' 40''$  (to stay in road)def. = (L)  $0^{\circ} 42'$  - pass 1.4 ft. E of  
'D.H.V. cor'

57.00 = Sta

at Sta 80.00 look for sec. cor. find nothing - stumps  
blasted + burned mostly.

- deserted frame house stands 1.00 ch N + 1.50 W ±

at Sta. 109.17 ± find well point in E. ditch  
which agrees with rock noted by D.H.V.

at " 117. nail in road

(6 1/2 paces N. of fence line E.)

h. N  $1^{\circ} 52' 25''$  Edef. = (L)  $0^{\circ} 49''$ 

42.00 = 159.00

hub + look for cor. D.H.V. post stands on W. edge road out

After running + measuring S. from small lake we identify  
D.H.V. NW tree (remains) no marks.

Point falls in road midway bet. crown of turnpike + W ditch

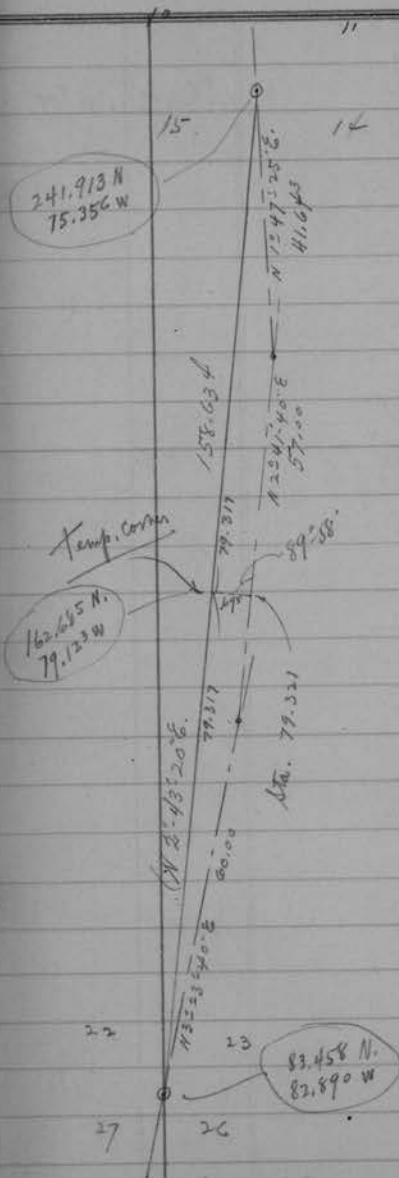
Agrees very nearly with D.H.V. record S of lake + is

slightly W. of <sup>old</sup> abandon from N.

Drive Iron Pipe at corner (10-11-14-15)

Aug 2<sup>nd</sup> PC bearing } W. Birch 4" S  $34^{\circ}$  E. 87.5 = 57.8'} W. Pine stump 28" N  $55^{\circ}$  W. 1.42 = 94.2'

Locate this point by S to W from 159.

29)  $9^{\circ} 32'$  .36" (resume on page 43)

Note - D.H.V.'s corner for

14-15-22-23 calculates

.67' E of a straight line

+ 9.89 S. of the way

Indicating that he used  
his 70 ch. tally to correct  
from instead of the 80 ch stake

Leave this temporarily  
while we work out  
cor. to 13-14-23-24

LH Sec. 14

∴ course from sta. 117.00 =

N 1° 47' 25" E

to sig. cor. 10-11-14-15

41.64<sup>3</sup> = <sup>sta.</sup> 158.64<sup>3</sup>



## N. Sec. 24

July 30<sup>th</sup> 29 fair. Hot.

Marshall, Ray + H.C. Hall + Jay French

Find Orig N.E. cor. Sec. 24

The SW stump is in good condition

others doubtful - water deep

Find D.H.V.'s post tipped over, but obviously where it stood.

This does not check so well for course but agrees better with such stump evidence as we find.

$$\begin{array}{r} \vee \quad 6 = 156 \text{ in } 1859 \\ \quad \quad 4 = 40 \\ \hline (1 = 35) \text{ for } 1929 \end{array}$$

We drive tall scribed green tamarac post with short Iron Pipe driven in top of

Podet	Spruce 4" $S 75^{\circ} W.$	93 = 61.4'
Compass	Tam. stub 12" $S 55^{\circ} E.$	29 = 19.1'
(23) stump of Orig Tam	$S 62^{\circ} W.$	38 = 25.1'

Run West on Random bet. 13 + 24.  $\vee \quad 5^{\circ} 58' W.$ 

(D.H.V. says he ran + on  $0^{\circ} 30' E$  in 1907  
 -  $5^{\circ}$  his correction  
 $4^{\circ} 30' W.$  Var in 1907  
 +  $1^{\circ} 28'$  for 22 yrs.  
 $(5^{\circ} 58' W.)$  for 1929

Get our course at Sta. 3.02 (on hard ground) backsighting on corner.

## N. line Sec. 24

(continued)

- 0.13 Wire fence N+S
- 0.0 Orig. corner
- 3.02<sup>3</sup> hub on hard neck of land N+S
- 3.01 set flag for  $\Delta$  over 2 swamp holes west

+ ( 15.14' )

18.15' hub. over swamp holes.

+ .84'

19.00

23.93<sup>3</sup> hub

30.32 "

36.49<sup>8</sup> "47.12 turn  $\angle$  W to S to D+V's point for  $\frac{1}{4}$ S.  
which he set on pro-rate in 1907  
80°48' .51 ch.

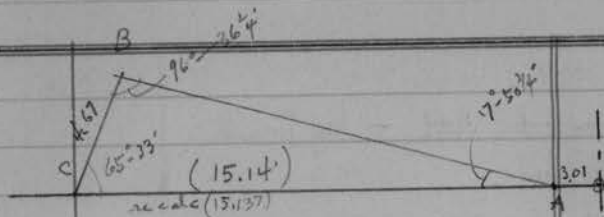
We identify his point by two strings (chained)  
which exactly check for course + dist. with  
D+V's notes. Comes in logging road, No  
stake hole to be found. Set temp. hub

47.20 st.  $\angle$  S. to D+V's  $\frac{1}{4}$ S. .50<sup>2</sup> ch.

47.25<sup>2</sup> (my calc. for  $\frac{1}{4}$ ) st. S. .49<sup>8</sup>  
(did not go back here)

48.52<sup>6</sup> hub53.40<sup>7</sup> "

- all for the day



$$b = \frac{a \sin B}{\sin A} = \frac{4.639}{.30639} = 15.14'$$

N. Line Sec. 24  
continued

July 31<sup>st</sup> 1929

Marshall, Ray + H.C. Hall + Jay French

59.72<sup>5</sup> hub

65.45<sup>5</sup> "

70.77<sup>2</sup> "

(70.87<sup>8</sup> calc. for 1/8 .747 d.)

82.00 hub

94.40 " + rt. c. S. 1.00<sup>4</sup> d.

(this is calc. spot for orig. cor. by producing  
D.H.V.'s line thru his 1/4<sup>th</sup>, a proportional dist.)

This brings us to a spot 4 or 5 ft. E of  
where we had dug for corner, and proves it  
to have been the orig. cor. used + pro-rated against  
by D.H.V.

Since his random fell so far S. (8.20 ch)  
some little difference is to be expected.

We set this corner (13-14-23-24) by the course +  
distance from remains of Oak + Sugar as near as  
possible; both trunks are lying on the ground where  
they fell (except for what has burned).

→ See page 17 for new bearings etc.

at 94.40 turn - W to S. to corner 83°59' 1.00<sup>2</sup> ch.

∴ 94.505 rt. c. S. to corner .99<sup>6</sup> - next page

West between 14 &amp; 23

94.505).99° ( .01054 = Tan  $0^{\circ}36\frac{1}{4}'$   
 cos.999947 true length 94.511 ch.

@ 95.73 (on this random) intersect our N+S  
 random @ Sta. 160.779 + turn S to E. See page 17  
 82°-07'-30"

Run N  $87^{\circ}48'0''$  V. bet. Secs. 14+23 by  $\perp$  N to W of random  
 87° 34' 45"

Needle reads N  $86^{\circ}50'W$  (with  $1^{\circ}45'$  var.)

0.0 Orig. Sec. cor. (13-14-23-24)

3.30  $\Phi$  road N+S.

16.37 hub

20.37<sup>2</sup> at  $\perp$  S. .01<sup>8</sup> + set  $\frac{1}{8}$  S.

Nov. 16<sup>th</sup>

$\gamma$  1:45<sup>6</sup>

(21)

Drive Iron Pipe + scribed W. Pine posts.

}	W. Pine Stump 11" N $31^{\circ}W$ (32.8 $\frac{1}{2}$ ) .61 <sup>8</sup> 40.8'
	W " " 12" S $43\frac{1}{2}^{\circ}E$ (135-40) 1.04 <sup>8</sup> 69.2'

→ On level plain  
 1 $\frac{1}{2}$  ch  $\pm$  N. of gully



30.93 hub

August 1<sup>st</sup> 1929 resume same line  
 Keith, Marshall, Ray + H.C. Hall + Jay French

33.75 enter fam. swamp (wet) N $\frac{1}{2}$  + S $\frac{1}{2}$ .

39.88 set tally stake at W.S. record

We look for  $\frac{1}{4}$  S. Plenty of big tamarac remains  
 but find nothing definite.

West. between 14 + 23 - continued

40.744<sup>4</sup> rt.  $\angle$  S. <sup>(2.9)</sup>.036 ch. + set  $\frac{1}{4}$  S. in swamps.

Drive Iron Pipe + pine post.

 $\angle 1:45^{\circ}$ Nov. 16<sup>th</sup> 1922

(20)

{	Tan. stub $16^{\circ}$ N $74^{\circ}$ E. .80 <sup>7</sup> = 53.3'
	(pipe in W. Pine stump 24')

N  $36^{\circ}$  W 1.62 106.9'

42.25 leave' swamp N &amp; SW

48.66<sup>3</sup> hub

49. old road N + S

49.18<sup>5</sup> fence " "

52.88 hub (we correct this S. 3.04 feet)

60.00 "

$$\begin{array}{r} 42.25 \\ 40.744 \\ \hline 1.506 \end{array}$$
61.116<sup>6</sup> rt.  $\angle$  S. .053 = (3 $\frac{1}{2}$  feet) + set  $\frac{1}{8}$  S.

(19) Drive Iron Pipe + Pine post in pasture

 $\angle 1:45^{\circ}$ Nov. 16<sup>th</sup>

{	W. Pine stump $15^{\circ}$ N $15^{\circ}$ W .965 63.7'
	W. " " $10^{\circ}$ S $45^{\circ}$ E .669 44.2'

78.97  $\phi$  road.79.64<sup>5</sup> fall .08<sup>6</sup> ch. N. of our temp. corner <sup>(N+D)</sup>

(of secs. 14-15-22-23)

(calculated 79.638) ✓

This .08<sup>6</sup> indicates some variance in our N+D measuring. Possibly gained on 44-23 as it was hilly measuring.

Later - Angle turned in road near temp. cor  
 + checks the course of this random as N  $87^{\circ}$  -  $47^{\circ}$  -  $40^{\circ}$  W.

41.488	41.071
20.372	.018
40.744	.036
61.116	.054
81.488	.072

$$.086 = 79.645 = .00108 = \tan 0^{\circ} 03' 4''$$

Later -

81.488 would fall .071 N. of pro. rated Sec. Cor.  
 $= .00087 = \tan 0^{\circ} 03'$  to correct S.

West on Random between 15 + 22  
(from temporary Sec. cor.)

November 13<sup>th</sup> 1929 Fair 35° F.  
Ray + Marshall with Jay French (9 AM)

Ran West on random course from temp corner  
(14-15-22-23) see sketch page 42-

V 0°-05'E.

We had walked thru on this line and found the  
orig. cor. 15-16-21-22 and thought we  
could guess a random better than to  
use Govt. Var. Were mistaken.

Turn def.  $\angle$  (R) with corrected line bet. 14 + 23  
0°-32' (4 times)

- 69° point in  $\Phi$  road + turn S to W to orig.  
corner 22-23-26-27 (89°-26½')  
(This last  $\angle$  was turned to random as changed  
at sta. 20.66')

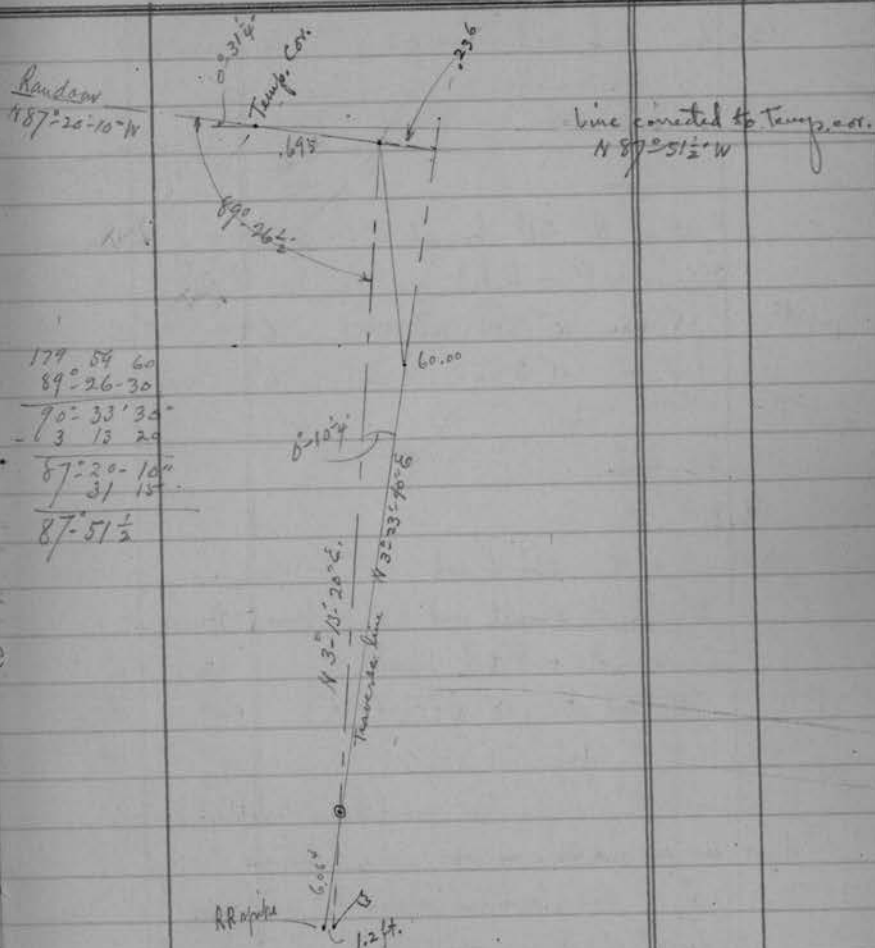
0.0 Temporary corner

1.843 Set corner to Secs. 14-15-22-23.  
(2.54 W of  $\Phi$  road)

Drive Iron Pipe

V 1.45 <sup>18</sup>	{	W. Pine stump 20° S 57° E (124½°)	.732 =	48.3
		W - - 11° S 79° W (230¾)	.69 =	45.5
		W - - 15° N 60° W (301°)	.637 =	42.2

(18)



Note - My random line bet. 15 + 22 so nearly coincides  
with a rt.  $\angle$  to a straight line bet. 15 + 22 and 14 + 23  
that the pointed corner comes in said random.

West between 15 + 22

continued.

20.66' hub and move 0.3 ft. S. to grass trees.

= 0° 0' 45"

∴ 0° 32' 45"

$$\textcircled{0^\circ - 31\frac{1}{2}'} \text{ actual}$$
 def. lat temp. cor.
22.16' at. c. N. .51' for  $\frac{1}{8}$  S. (= 20.32 N. of final corner)

Drive Q.P. + Pitch post (on SW slope near summit)

V. 1° 45' 2"	$\left\{ \begin{array}{l} \text{Y. Pine } 10^\circ \text{ S } 14\frac{1}{2}^\circ \text{ W } (195\frac{1}{2}^\circ) \\ \text{Y. " } 11^\circ \text{ N } 4\frac{1}{2}^\circ \text{ W } (356\frac{1}{2}^\circ) \end{array} \right.$	$\left. \begin{array}{l} .56^3 = 37.2 \\ .46^3 = 30.6 \end{array} \right\}$

31.42 hub

36.81 "

42.48' at. c. N. 103' + set  $\frac{1}{4}$  S. (= 40.64 W of corner)

SW side of small pot hole - burnt barrens -

Drive Q.P. + Pitch post

V. 1° 45' E	$\left\{ \begin{array}{l} \text{W. Pine stump } 10^\circ \text{ N } 25^\circ \text{ W } (336^\circ) \\ \text{W. " Stump } 20^\circ \text{ S } 82^\circ \text{ E } (98\frac{1}{2}^\circ) \end{array} \right.$	$\left. \begin{array}{l} .546 = 36.1 \\ .579 = 38.2 \end{array} \right\}$

We searched thoroughly but everything badly burned. Have no record of any one ever finding Orig.  $\frac{1}{4}$

We find 2 stump remains close to our pro-rata  $\frac{1}{4}$  which checks up pretty well but can find no stake hole to support the theory.

45.07 hub

48.81 "

West between 15 + 22 continued

58.16' hub + enter (arm of) swamp - from S.

62.80' int.  $\angle$  N. 1.54' + net 1/8 S.

= 60.96 W. of Pro-rate cor. (along random)

(15) Drive Pitch post in depression on top of ridge N + S

$$\begin{array}{l} \sqrt{1.45'} \\ \left\{ \begin{array}{l} B. Pine 10' S 63\frac{1}{2}' E (118\frac{1}{2}^\circ) \quad 53 = 35. \\ \gamma. " 8' S 78\frac{3}{4}' W (261\frac{1}{2}') \quad 74 = 49.1 \end{array} \right. \end{array}$$

63.18' hub

several hubs, in + out of swamps.

81.75 " unable to see corner - traverse

① deflection  $\angle$  (R)  $67^\circ 45\frac{1}{2}'$  ( ) 1.158  
 Th. ② " " (L)  $21^\circ 21\frac{1}{2}'$  ( ) 1.37 To corner.

Darkness - last 15 ch. rough going

Decide to call this 81.74 to hub

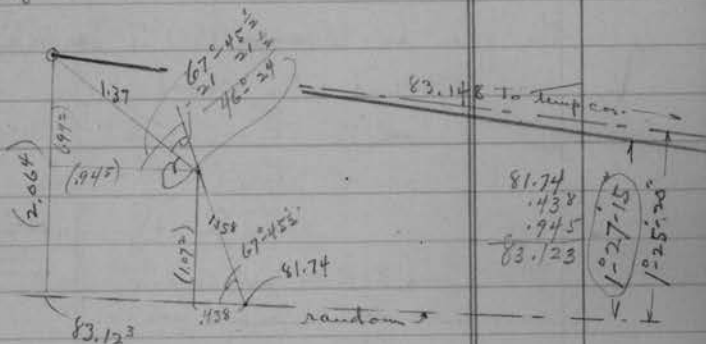
 $\therefore$  83.12' int.  $\angle$  North (over ridge) to Orig corner 2.06'

$$2.06 \div 83.12 = .02483 = \tan 1^\circ 25' 20'' (\cos. 99969)$$

$$= N 85^\circ 54' 50'' W 83.148 \text{ from Temp. corner.}$$

$$\begin{array}{r} 83.123 \\ - 1.843 \\ \hline 81.28 \\ + 20.32 \\ \hline 40.64 \\ + 60.96 \\ \hline 81.28 \\ \sqrt{\quad} \end{array}$$

$$\begin{array}{r} N 87^\circ 20' W. \\ - 67^\circ 45' \\ \hline N 19^\circ 34\frac{1}{2}' W. \\ + 21^\circ 21\frac{1}{2}' \\ \hline N 40^\circ 56' W. \end{array}$$



Cont. Record.

$$4+23 = 79.82 \text{ ch.}$$

$$4+22 = 79.64$$

$$\hline 159.46$$

Cur. Measurement

$$79.645 \text{ (page 53)}$$

$$83.148$$

$$\hline 162.793 =$$

$$- 159.46$$

$$159.46 \overline{) 3.333 \text{ surp. in 2 miles}}$$

$$.0209 \text{ " per ch.}$$

$$\therefore .0209 \{ \times 79.82 = 1.668$$

$$\quad \quad \quad 79.82$$

$$\quad \quad \quad \hline 81.488 \text{ for } 4+23$$

$$\{ \times 79.64 = 1.664$$

$$\quad \quad \quad 79.64$$

$$\quad \quad \quad \hline 81.304 \text{ for } 4+22$$

$$81.488$$

$$+ 81.304$$

$$\hline 162.792$$

81.488 Pro-rate

$$- 79.645 \text{ minus}$$

$$\hline 162.793 \text{ W. of Temp. cor.}$$



Nov. 16<sup>th</sup> 1929

H.C. Ray, Marshall &amp; Jay French

Drive Iron Pipe alongside Davis old post at  
Orig. cor. to Secs. 15-16-21-22 as tied into  
(on page 59). Also drive new patch post.

Davis had re-scribed what is left of orig. SW tree.  
The other tree (down in 1899) is far gone in  
decay & covered with moss.

 $\frac{1}{2} \times \frac{1}{2} \times \frac{1}{2}$ 

New S.V. Pine  $12^{\circ} 15' 55''$  N  $58^{\circ}$  W ( $304^{\circ} 50'$ ) .86 = 56.8'

Y. "  $10^{\circ} 53' 28''$  S  $30^{\circ} 26'$  E ( $152^{\circ}$ ) .42 = 27.7

(14) Orig.  $S 4^{\circ} 15'$  W ( $224^{\circ} 15'$ ) .11 = 7.3

Old wire fence H+D in poor condition NW. 3 or 4' ±

Bushes out road w. on line from cor.

Set in corners along  $\frac{1}{2}$  14 + 15 as noted in notes  
for those lines.

November 18<sup>th</sup> 1929 30° Overcast.

Ray, Keith &amp; Marshall Hall

Keith & Ray re-measure our random H 22 (as on P. 55)

check meas. S. over ridge from # 14 2.06' ✓

call hub (at 81.74) 1.38<sup>3</sup> and resume meas. S.

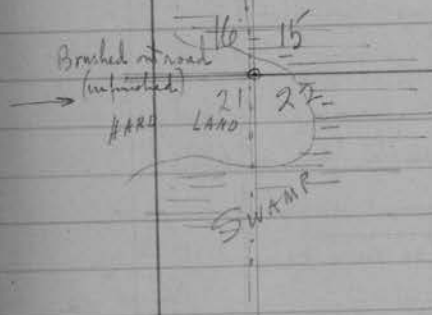
19.94' hub

→ 20.32<sup>3</sup> at a point for  $\frac{1}{4}$  ✓

24.96<sup>3</sup> hub for 58.16<sup>6</sup>

34.31<sup>6</sup>

(.006 out)  
(.009)



38.06 <sup>3</sup> hub (fr 45.07)	.01 out
40.64 <sup>7</sup> opp $\frac{1}{4}$ S.	.007
46.317 hub	
60.97 opp $\frac{1}{8}$ S.	.01
81.29 <sup>3</sup> Sec. Corner (81.28)	2) .013 ✓
	.007 ✓

Having no other check on this dist. decided a second measurement was justified. OK

Re-run line between 22+23 (on a reversed random) to keep out of dense brush. by sighting  $S 3^{\circ} 13' 20'' W$  along road at a point opposite corner.

0.0 right & west to Pro-rata corner 14-15-22-23

(2.54' ch.)

20.00 (spike on line + .85 $\frac{1}{2}$  N of line of N. face of Petersen's house - + .12 $\frac{1}{2}$  W of E road)

33.415 hub W of road ditch

40.00 hub

79.277 to SP. (line OK)

79.277) 2.541 ( .03205 = Tan $1^{\circ} 50' 10''$	@30°
	Cos. .999488 = 79.318 m
	True line
	79.338 cdc.
	79.318 Moss
	(.02 short)

North (Time Line) between 14 + 15

November 19<sup>th</sup> 1929 28" N. wind

Ray, Marshall, & Jay French 3/4 day

Run N 42° 03' 10" E. from Pro-rated corner (\*78 page 55)

by  $\sphericalangle$  W to N off random 91° 23' 20"

ch Ray & Marshall meas.

13.70<sup>8</sup> hub

20.00 temp peg, not lined in

20.75<sup>8</sup> hub + enter timbered part of swamp

26.30<sup>5</sup> " in S. part plowed field

This line passes thru house (thru chimney)

Offset .28 W. at rt  $\sphericalangle$ . + turn W to N to

flag at orig. N 8° x 15'

✓ 90° 18' @ 180° 36'

Continue North on .28 offset.

34.33<sup>5</sup> hub just NW of house + rt  $\sphericalangle$  E. 28 to line.

22661

At N 8° x 15' turn SE to S from sta 117 on Traverse (P. 41)

②  $\sphericalangle$  49' (  $\frac{2''}{2} \frac{16''}{15} \frac{20''}{45}$  calc  
0° 0' 35° at ✓

(over)

$$53.434 \cdot .28 (.00528 = \tan \alpha = 18^\circ 10' \checkmark$$

Continue N. on true line to flag.

39.693 Drive I.P. (flush with ground) & pile rocks  
about for  $\frac{1}{4}$  S between 14 & 15

(24)

No bearings near - all fields

± present turnpike bis. E. 150 = 99'

As  $\left\{ \begin{array}{l} \text{Hall Spruce Pt. for NE of 14} \\ \text{S. peak hay barn} \end{array} \right. \begin{array}{l} 67^{\circ} 45' \\ 93^{\circ} 30' \end{array} \checkmark$

79.386 I.P. at Orig. NE of 15 in Turnpike  
midway between crown & W. ditch  
(Our bush has been removed in recent clean  
ups of fence & bush & road)

Ms. Moen came out & stated 24 was the main  
object so we did not set in any more  
of the corners south.

By comparing the 2<sup>nd</sup> meas. of E 15 622 with the  
traverse meas. & taking temperature into  
consideration - I find that our private corner  
may be 2' S. of intended point.

Having already set in corners on E 15 114,  
will let it ride. — ~~all~~ —

79.386 @ 28°  
- 79.338 Calc.  
0.048 surp.

## Polaris Observation

Dec. 8<sup>th</sup> 1929 +2°

H.C. Hall, Ray + Marshall.

Observed Polaris at Upper Culmination, on W-26 near 1/4 S. This was not an entirely satisfactory observation but, for purposes of this survey, will suffice. Intend to supplement this with check in summer.

Dec. 9<sup>th</sup> 1929 +13° fair

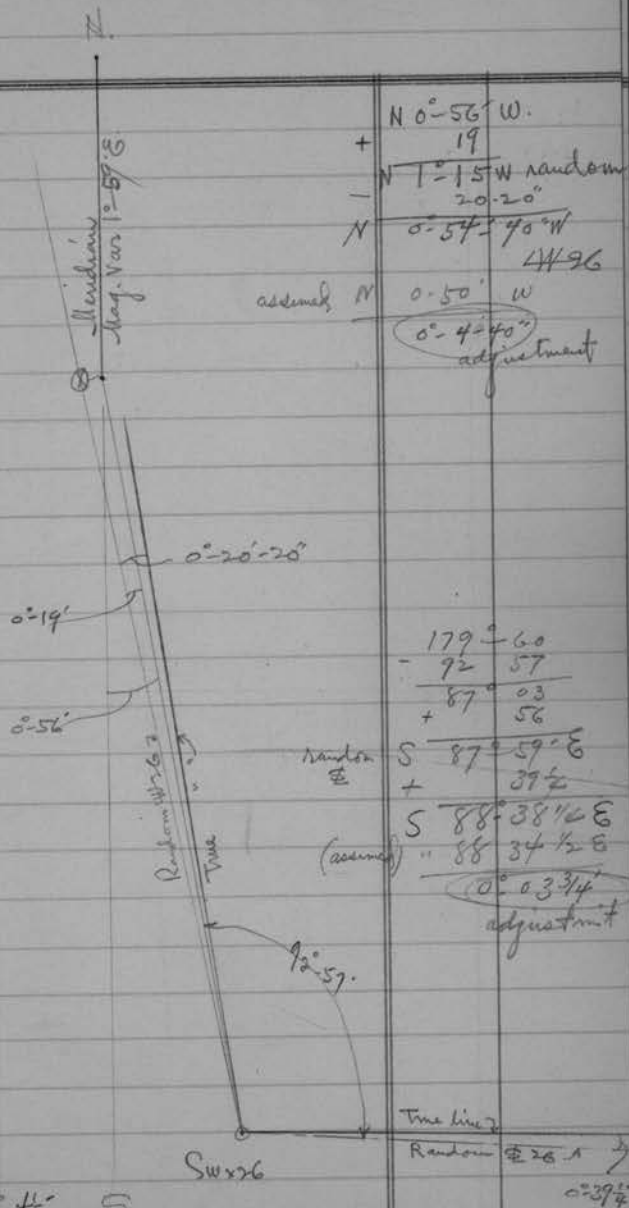
Ray, Keith + Marshall. Var. on Meridian 1°-59' E.

Tie in our Meridian to SW cor. 26 as follows:

At ⊗ N to SE (3 times) " " " 179° 04'  
 ∴ def.  $\angle$  = 0°-56'

At SW x Sea 26. ⊗ to random W-26 (3x) 0°-19'

" " " ⊕ " (3 times) 92°-57'



N 0°-56' W.

+ 19

N 1°-15' W random

- 20-20

N 0°-54' 1/2 W

W 96

assumed N 0°-50' W

0°-4' 1/2 W

adjustment

179°-04'

- 72°-57'

+ 87°-03'

+ 56'

random S 87°-59' E

+ 39 1/2'

S 88°-38' 1/2 E

(assumed) " 88°-34' 1/2 E

0°-03' 3/4

adjustment

True line

Random W-26

0°-39' 1/2

W Most satisfactory

∴ call adjustment 0°-4' 1/2 E.

∴ My assumed Meridian (W-26) is in reality N 0°-04' 1/2 W.