

City Surveys
only

OLDFLDBK 106

FIELD BOOK

932

OFFICE OF
COUNTY SURVEYOR

RHINELANDER, WIS.
INDEX

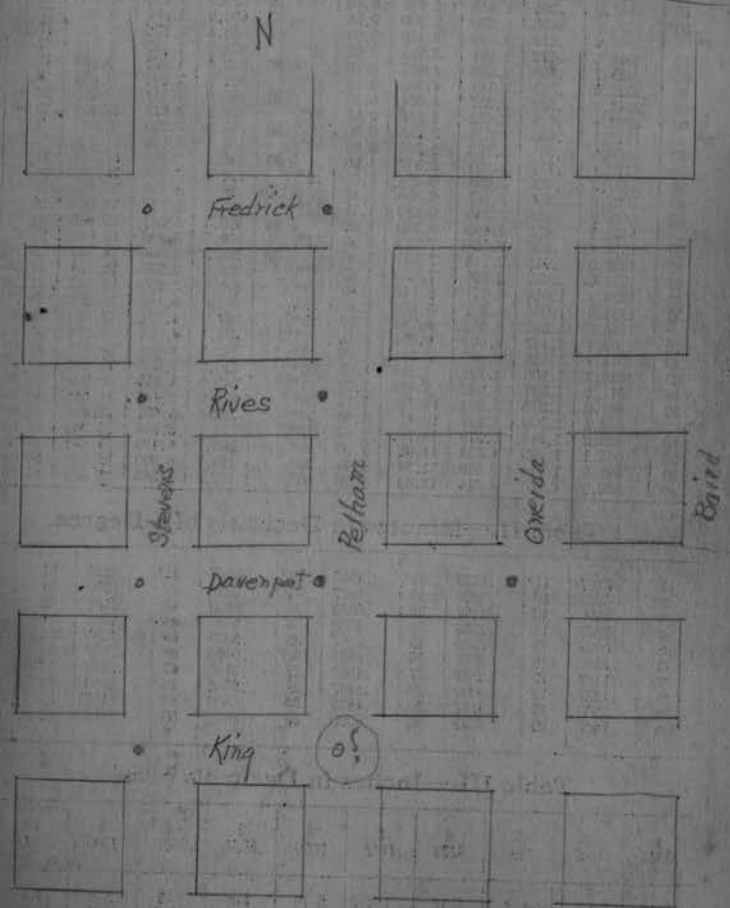
Page	Desc.	Surveyed for
1-26	Lot 1 + part of 2 Blk 3 1st Addy to Rhl.	Eagles Club ✓
29-46	Lot 4 + part of 3 Blk 19 Orig. Plat of Rhl.	-Memorandum Ass'n. ✓
47-48	Lot 2 Blk 2 1st Addy	-M.A. Shaska ✓
50-53	1 3 Sutcliffe Add.	Earl Kettner ✓
55-58	1 25 2nd "	Dr. Kirsch ✓
65-74	Lot 2 - 7 Keenan's Addy	Ed Yaukie ✓
83-87		Gardner - contractor ✓
69	Amory Site	
75-82	Lot 2 Blk 3 - Replat Mill Lots C + D	H H Krause ✓ in Sec 31
89-90	Lot 3 Blk 20 - 2nd Add.	C.A. Mc Donald
91-105	3 " 6 Keenan's 2nd Add	Dr. Wright
108	L. 15 Blk 9 St. Albans Add	J.T. Swenberg
109-112	16 " "	Lowell Bell
113-121	Blk 5 Pelicans Add	Hilgeman (Juni)
123-127	Blk 1 Olson & Kuy's Addy	- City Managers

Resume on page 0

Monuments

are in center of E & W Streets
On N & S Streets they are 20 feet
from West Line

Pulled out by St. Stephens
1923



Note - This sheet, on file in
City Hall
Presumably for D.H. Vaughan

Table VII. Excavation and Embankments, Cu. Yds. per 100 ft.

Slope	½ to 1	1 to 1			1½ to 1				All Slopes 1 Ft. Base
		BASE			BASE				
		20'	20	22	24	14	16	20	
1	75	78	85	93	57	65	80	94	3.7
2	152	163	178	193	126	141	170	200	7.4
3	230	256	278	300	206	228	272	316	11.1
4	311	356	385	414	296	326	385	444	14.8
5	393	463	500	537	398	435	509	583	18.5
6	477	578	622	666	511	556	644	733	22.2
7	564	700	752	804	635	687	791	894	25.9
8	652	830	889	948	770	830	948	1067	29.6
9	742	967	1033	1100	917	983	1116	1250	33.3
10	833	1111	1185	1259	1074	1148	1296	1444	37.0
11	926	1263	1344	1425	1243	1324	1487	1650	40.7
12	1022	1422	1511	1600	1422	1511	1689	1867	44.4
13	1119	1589	1685	1781	1613	1709	1902	2094	48.1
14	1219	1763	1867	1970	1815	1919	2126	2333	51.8
15	1319	1944	2055	2166	2028	2139	2361	2583	55.5
16	1422	2133	2251	2369	2252	2370	2607	2844	59.2
17	1527	2330	2456	2582	2487	2613	2865	3117	62.9
18	1633	2533	2667	2800	2733	2867	3133	3400	66.6
19	1742	2744	2885	3025	2991	3131	3413	3694	70.3
20	1852	2963	3111	3259	3259	3404	3704	4000	74.0
21	1963	3189	3344	3500	3539	3694	4005	4317	77.7
22	2078	3422	3585	3748	3830	3993	4318	4644	81.4
23	2193	3663	3833	4003	4131	4302	4642	4983	85.1
24	2310	3911	4089	4267	4444	4622	4978	5333	88.8
25	2430	4167	4352	4537	4769	4954	5324	5694	92.5
26	2551	4430	4622	4814	5104	5296	5681	6067	96.2
27	2675	4700	4900	5100	5450	5650	6050	6450	100.0
28	2800	4978	5185	5392	5807	6015	6430	6844	103.6
29	2926	5263	5477	5691	6176	6391	6820	7250	107.3
30	3055	5556	5778	6000	6556	6778	7222	7667	111.0
31	3185	5856	6085	6314	6946	7176	7635	8094	114.7
32	3318	6163	6399	6635	7348	7585	8059	8533	118.4
33	3452	6478	6722	6966	7761	8006	8494	8983	122.1
34	3589	6800	7052	7304	8185	8437	8941	9444	125.8
35	3727	7130	7389	7648	8620	8880	9398	9917	129.5
36	3866	7467	7733	8000	9067	9338	9867	10400	133.2
37	4008	7811	8084	8358	9524	9798	10346	10894	136.9
38	4051	8163	8444	8725	9993	10274	10837	11400	140.6
39	4296	8522	8811	9100	10472	10761	11339	11917	144.3
40	4444	8889	9185	9481	10963	11259	11852	12444	148.0
41	4593	9263	9567	9871	11465	11769	12376	12983	151.7
42	4744	9644	9955	10266	11978	12289	12911	13543	155.4
43	4897	10033	10351	10669	12502	12820	13457	14094	159.1
44	5052	10430	10756	11084	13037	13363	14015	14667	162.8
45	5208	10833	11166	11499	13583	13917	14583	15250	166.5
46	5366	11244	11584	11924	14141	14481	15163	15844	170.2
47	5527	11663	12011	12359	14709	15057	15754	16450	173.9
48	5688	12089	12444	12799	15289	15644	16356	17067	177.6
49	5853	12522	12884	13240	15880	16243	16988	17694	181.3
50	6018	12963	13333	13703	16481	16853	17592	18333	185.0
52	6355	13867	14251	14635	17719	18104	18874	19644	192.4
54	6700	14800	15200	15600	19000	19400	20200	21000	200.0
56	7051	15763	16177	16591	20326	20741	21570	22400	207.2
58	7410	16756	17186	17516	21696	22126	22985	23844	214.6
60	7777	17778	18222	18666	23111	23555	24444	25333	222.0
70	9722	23332	23850	24368	29852	30370	32407	33444	259.0
80	11852	29629	30221	30813	39704	40296	41480	42667	296.0
90	14167	36666	37333	38000	49667	50333	51665	53000	333.0
100	16667	44444	45184	45924	60741	61481	62962	64444	370.0

INDEX 35

continued

Page	Description	Yr.	Ordered by
129-133	N 100' out lot 1 Blk 1	1933	L. M. Cohen
	Keenan's 1st Addn		
135	Lot 5 Blk 25	1937	Walter Krage
	2nd Addn		
136-	Lot 7 & South 20' Lot 8	1935	Herman A. Boston
140	Blk 3 Bl. Harris		
	1st Addn		
182	Blk 182		
	1st Addn		
	2nd Addn		
	3rd Addn		
	4th Addn		
	5th Addn		
	6th Addn		
	7th Addn		
	8th Addn		
	9th Addn		
	10th Addn		
	11th Addn		
	12th Addn		
	13th Addn		
	14th Addn		
	15th Addn		
	16th Addn		
	17th Addn		
	18th Addn		
	19th Addn		
	20th Addn		
	21st Addn		
	22nd Addn		
	23rd Addn		
	24th Addn		
	25th Addn		
	26th Addn		
	27th Addn		
	28th Addn		
	29th Addn		
	30th Addn		
	31st Addn		
	32nd Addn		
	33rd Addn		
	34th Addn		
	35th Addn		
	36th Addn		
	37th Addn		
	38th Addn		
	39th Addn		
	40th Addn		
	41st Addn		
	42nd Addn		
	43rd Addn		
	44th Addn		
	45th Addn		
	46th Addn		
	47th Addn		
	48th Addn		
	49th Addn		
	50th Addn		
	51st Addn		
	52nd Addn		
	53rd Addn		
	54th Addn		
	55th Addn		
	56th Addn		
	57th Addn		
	58th Addn		
	59th Addn		
	60th Addn		

#R29610

6-36-9

Survey of Lot 1 in Blk 3. First Addn to Rhinelanders, also a part of Lot 2 of Blk 3 of said First Addn etc. described by mates and bounds as follows: Commencing at a point on the lot line between said lot 2 and the R.O.W. of the C & NW Ry. 21 feet from lot 1 in said Blk 3; Thence along said line of said R.O.W. to the line between said lots 1 & 2; Thence along said last mentioned line to Anderson St., thence in a S Ely direction along said Anderson St. of said lot 2, 21 feet; thence in a S Wly direction to P.O.B.

For Eagles Club (Rhl. Lerie #359 F.O.E)
by J. E. Bonnie

June 5th 1929 (A.M.) Ray + Keith Hall
Dig + find remains of an old stake on Sly line
of Anderson St. presumably for lots 1 & 2
7' SW of CW + 1.12' NW of joint.

Dig at E. corner Blk 3, about 1 1/2' down
encounter natural surface of ground + nailed
stake, tipped over. Where lot enters N.S.
is about 1.4' NW of CW. + 1.35' SW of CW.

Find nothing (W. corner (x) Lot 1
E " " 1
W " " Blk 13
N " " Park.

Two frame bldgs. on Mercer at Pelham less than
record dist. apart.

P.M. Ray + Marshall Dig at W x Blk 6 - nothing.
" " N x " 7 - find only
bottom of old cedar fence post, about 1' from C.W.
(SW)
Find car axle for Ex Blk 13
{ 1.05 NW of CW. } + 59.2 from old wire fence corner
{ 1.00 SW " " } at N x Blk. 14
{ a stake (recent) 1.25 SW of CW.
7 NW " "

Meas. NWly along Ely Mercer St. from rd. car axle

- 59.2 (fence corner) across Court

- 1.05' EW.

oo Iron axle

60.8 line of hedge etc.

- 272.2 ± line of sheds in rear
 360. leave $\frac{1}{2}$ arrow on c.w.
 360.5 about line of Wly face 2 story frame
 on lot 8 1 Blk 10
 420.8 SE face old 2 story frame on L.5 Blk 11

Mess. NW. Side Cour

- * from 60' N Ely of said car axle at Ex Plk 13
 Measure N Ely along NWly line Cour St.
 - 60. car axle
 - 1.6 C.W. ✓
- | | | | |
|--|--------|--------|--------|
| | ③ | ① | ② |
| | 149.78 | 150.54 | 149.94 |
| 150. ± line of N Ely eaves 2 story frame (at R.R.) | | | |
| 199.4 ± main track C. + NW R.R. | 199.7 | 200.54 | 199.94 |
| <u>249.63</u> Take $\frac{1}{2}$ Ely line Blk 3 | | | |
| 250.25 a hole where some part of stake has
been pulled out. | 249.63 | 250.89 | 249.89 |
| 250. 57 SW end c.w. | | | |
- 401.33 location of old stake at Ex Plk 3 ^{401.43} ^{402.63}
- * 402.2 ± Anderson plot as taken (OK)
- 402.67 C.W. at Sly side Anderson St.
^{462.2} over NW Anderson as run. ^{461.43} ^{462.6}
- 460.8 NE edge C.W. N " "
- | | | | |
|---|--------|--------|--------|
| 536.25 line of eaves | 537.1 | 536.7 | 537.6 |
| 612.05 about line of D.H.V's old hub for N Ely
line of N Ely half of lots 5 & 6 Blk. 4 | 611.97 | 611.86 | 612.56 |
- 763.5 SW edge C.W. at Sly side King St. ^{761.75} ^{762.5} ^{762.5}
- * 822.15 a cross notch in c.w. { 1.40 NE of joint
 (+ 272.2 old board fence { 0.35 NW }
 (said to be OK
 by BF Don + to H Vaughan) ?
- 1094.7 ^{1093.46} ^{1092.4}

Rec.
700.

Meas.
822.5
- 120. streets (1)

702.5
- 700.

2.5 short (.00357 per ft.)

Note. The plat of this subdivision as on record in the Reg. of Deeds - Rhinelanders gives lots in Blks. 7 + 8 a depth of 150 and no record given for depth of any of the lots in Blk 3.
Some old maps give 152.8 on SE end Blk 3 + 124.5 = NW

Go to Merrill + examine orig. recording of plat. All lot depths from 5 in Blk 3 to 3 in Blk 8 are shown as 152.8'. Length of all lot depths in Blk. 3 are given.

Rec.
150.
+ 100.

250
+ 152.8

402.8
+ 60.

462.8
+ 152.8

615.6
- 70.

545.6
+ 150

695.6
- 120. for streets

575.6
+ 702.8 Meas.

1278.4
- 2 short = .043' short per 100'

Rec.
402.8
402.2 Meas.

402.8 - 6 short (.149 per 100')

(this works out OK with D.H.V.'s line thru Blk 4)

Measure SE^{ly} along NE side Blk. 7 from 60.7 SE of old stake found. (page 1)

- 0.0 no CW. on this side corner
- 1. ± where we found old fence post
- 60.7 an iron pipe said to be where D.H.V. located lot line.
- 301.2 joint in CW + NW end Cement Wall

Meas. S. Anderson

Meas. NW^{ly} from said (old stake) (for Ex Blk 3) along S^{ly} line Anderson st.
- 1.4 CW.
- .8 as 40' corner as run. (page 10)
0.0 about loc. of (old stake?)
122.4 line of SE eaves on rear garage
178.4 " of SE " 1 story frame

39.57
299.45
358.97

236.9 " of rear fence
239.1 " 2 story frame without eaves (on lot 2)
277.7 NW edge cement drive + line of rear of sheds on labor temple property
299.45 opp. old stake found (page 1)

299.45
1.12
298.33

299.03 take $\frac{1}{2}$ lot 1
 358.3 N. corner old 2 story Fr. labor temple.
 359.00 find old stake hole 2' below cur.
 359.9 joint in EW.
 360. leave $\frac{1}{2}$ arrow
 + 56.7
 418.7 about line of SE face 3 story frame
 Alpine Hotel, on Sx Blk 2

R. 360.
 N. 359.8
 .2 short
 .0333 per lot.
 x 4
 240.1332
 = 239.87

.0333
 x 166
 55.1166
 304.
 299.83

60.
 - .03
 59.97
 + 21
 80.97
 # property

June 8th 1929 5 AM. (3 hours)

H.C. Ray & Marshall

Run N&Sly line Anderson St. by W.x near Stone limit
 2 story brick at SWx Blk 2 (Brown St.)
 and by SW face Alpine Hotel about 12' from Palham
 - 2' offset -

Wall

11 N. of ¹⁸⁷⁻² Sx sd. 2 story SF. blk at Brown St

14 S. of ^{2.14} rear end Alpine Hotel

45.6 S. of ⁴⁷⁶⁻² x Alpine Hotel for intersection W Palham + Stevens

106 N. of joint in CW. at Sx Alp. Hotel

47.98 S. of a cross + which is .9 from int edge CW.
 apparently for 8' offset being 8.1 \pm SE from W Palham
 + 7.7 \pm E from Stevens
 - by mess from Alp. bldg.

1.08 NE of CW at Wx Blk 4 (Ex Palham + Anderson)

59.95 NE of old stake later found at North cor Blk 3. or
 at Sta. 462.15 on $\frac{1}{2}$ Palham see page 13 -

59.2 \rightarrow

61.2 N&Sly from both corners old Labor Temple

59.1 + 2
61.1 N Ely from N x old 2 story Fr. on L. 2

59.7 + 2
60.7 N Ely from Ex do

2.35 - 2
.35 S^W from J. P. for Lots 2+3 Blk 4 on Anderson

1.4 N. of CW at Sx Blk 4

1.84 N of CW at Wx Blk 6

59.1 + 2
61.1 N of St. for Ex Lot 1 Blk 7

2.42 N of CW at Ex Blackburn & Anderson

2.55 N " " " Oneida St.

S plat - this line at scale 50' = 1" horizontal & 2" = 1" vert.

Run NW line Courto St. by Iron bolt (car axle)
at Ex Blk. 13 + by Cross match -|- at sta 822.5
on page 4 N x King & Courto 4' offset.

Fall

.6 NW of CW. at Ex Blk. 3

4.83 - 4
.83 SE of old stake at do

.86 NW of CW at S. end do (about Sx Blk 3)

56. + 4
60.00 NWly from N x stone foundation 1st y. frame
at Wx Blk 7

.95 NW of CW at H. Mercer

4.25 - 4
.25 on CW at Sx Blk. 13

< of these two lines NE to SE at Sx Blk 4
① 89° 56½' ← ② 179° 53' ←

55.08 + 4
59.08 NW of CW. at H. Anderson
.44 " " " CW - - -

S plat out - this line 50' = 1" by 2" = 1"

June 10th - 1929 - H.C. Ray, Keith & Marshall.
3 hrs in A.M.

Meas. N^{Ely} on Ely Blackburn St. from $\frac{E}{S}$ track
49 3/4' \pm to Jones foundation. 1 story frame
202.45' CW, at S. side Anderson.

261.75 + 2
263.75 on H Anderson St. run (Page 8)

Meas. S^{Wly} on NW line Blackbird St from old fence
line thru center of block 6.
150' N edge CW at Anderson St.

Meas. N^{Ely} along Ely comes from $\frac{E}{S}$ main track, C^XNW.
203.3 CW, at S. side Anderson
(202.8 = Rec.) comes 15 S of walk. ①
261.15 CW. (262.8 = Rec.)
263. on H Anderson as run.

411.2 about line of fences + cement retaining wall
- thru Blks. G
(base of) \rightarrow Top would be
considerable N.)

564.2 CW at King St.

Meas. S^{Ely} on Ely line Pelham from joint in CW.
+ S^{Ely} face old 2 story frame at Ex Mercer +
Pelham.

0.0 joint
1.2 CW.

59.35 line of N face old 2 story fr. + joint CW \pm

287.2 hedge.

361.47 CW. }
419.44 CW. }

760.3 \pm inside edge CW. Lebitus + Pelham.
766.1 half arm at rec.

$\frac{2.6}{763.5}$ about line of steel fence across st W.
(hid up 1' from CW, on $\frac{E}{S}$ Pelham)

R
60
150
210
150
360
60
420
3461
7661

①

50	150	202.8	261.15	361.47	419.44	564.2	763.5
202.8	261.15	361.47	419.44	564.2	763.5	766.1	769.7
60	150	210	360	420	570	720	870
202.8	261.15	361.47	419.44	564.2	763.5	766.1	769.7

261.15
419.44
763.5

Meas. @ Peham

Meas. N by first sd. joint in C.W. at sta 00 Page 12
along @ Peham

Rec.

210.54 @ N by Main Tracks

277.85 Take West corner Blk 3—

281.9 W x old Labor Temple

400.92 N x

402.2 find old stake 2" below surface

402.86 joint in C.W. + about line C.W. @

461.07 C.W. on N side Anderson

462.15 on N Anderson no run OK.

512.8 line sheds on x lot.

611.1 ± line between eaves etc.

763.99 C.W. at @ King.

821.63 C.W. at A—

Property owner on this x (old resident)
claims to have built C.W. in 1907
where old plank walk laid + that
the old stake was within 2" of walk x

944 old wood fence on sheet

Assigned 402.8
462.8
150.8
209.95
47.25
157
762.8
60
822.8
129
751.8

402.13

① To 200 at 821.63

462.13

- 461.07
+ 58.88
402.19
462.86
129
402.21

Note

Decide to take line of Anderson St.
as run on page 8. Since this
agrees (within .05 of old stake
found at North corner Block 3.)
and with pro-rate to Cement Walk
at 821.63. (pro-rate ① page 13

402.80 Assumed Rec.
402.15
402.8) .65 short
.00161 - per foot
x 278.3 = .45
278.30
277.85

①

Record.

822.80
- 120. streets
702.8 rec.
701.63
702.8 / 1.17 / .00166
=.166 per 100
short

402.8 Assumed.
- 124.5
278.3 for W x Lt 1
- 68.
270.3 for RR Tracks

June 11th

3 Halls

Meas. N. on E side Arbutus from NW x Blk 4

0.0 Car axle set by CDV. at orig. loc. ^{stake} Doria
This is 36' E of CW + in line
with joint.

57.98 1' edge CW on N side Stasca

419.8 CW at N side Prospect

602.3 hedge

720.7 CW S side Kemp st.

1006.5 line bet. garages

(1017.2 " " line across street)

1066.3 " " fence

1129.1 N end cement curb + line of fence

1130.1 joint in CW.

1193.1 line of bushes + of 1' from CW across ^{st.}1190.6 End old fence post remains: very rotten
.96' E of CW (.72 S. of joint)1253.8 joint + a meas.
1260 1/2 arrow at me.

60
360
720
60
1440
180
660
150
840

Meas S Ely thru Blk 12 following fence between
lots 1 & 2

0.0 @ main RR tracks - (seemed 50' rec)

47.6 rear of garage

+ 154.9 Wly edge CW in Pelham

202.5

- 57.6

260.1

E line ± Ely face CW. on E side Pelham

154.9
47.6
202.5

Acres NW 1/4 on N Newbold St from Com. ①

-1.55 acre line.

-1.3 CW.

0.0 old stake hole of some sort

119.3 line of fence etc. NE 119.83

242.3 " sheds hedge + joint in CW. 237.22

360.16 CW. at E of Pelham 357.60

417.5 ± " W. by " 419.60

516. line of W face sheds (not incl. eaves) 519.60

620 1/2 E RR track street

60
120
180
240
300
360
420
480
540
600

①

620.25

1.55

621.80

620.

580) 1.8 surpl. (.132 per 100
.192 = 20

This P.R. comes .55 @ 1 East CW
+ 2.1 @ 10 of W.

June 12th 1929

H.C. Ray + Marshall. (8 to 11 AM) Rain at 11:00

Break down CW at N x Labor Temple + dig away
filled ground + debris. Old cedar block forms under-
pinning for bldg. x. 2' below CW. encounter natural
surface + find a round, vertical hole. 11" deep.

.65 SW of joint

2.82 NW " "

+ 89.58 of joint
noted
on H. 3.

which is approx.

1.75 NE } of N x Labor Temple
.6 NW }

400.92
1.25
402.17
65
402.82

358.3
6.2
359.7
359.77

359.9
359.89
359

June 13th 1929 Overcast 50°

H.C. Ray + Marshall - Look for Davis Stone #3
 Find Davis folder with + on top - 3' below surface
 70.23 S. of car axle at NE x lot 1 Blk 4 (S. Park
 + 1.7 W. of shed corner (500 x shed)

∠ at axle at NE x lot 1 St W. 93° 02' (about sight S)
 Meas. lot axles for N x lot 1 14.1'

Offset 5' W. from NW x lot 1 along W lot 1 & turn E to N
 92° 48' to line of car axle (+5) about middle Blk 3
 @ 92° 50' . . . old fence post at NW x Blk 1

Rain about 9:40 H.C. finds Stone #1 (exposed)
 also an iron bar flush with soil for NE x Blk 1.

P.M.

Check ∠ @ this E. Arbutus falls 0.06 W of car axle *

@ 92° 48' 145.35 (92-47.5)

On the 5' offset line opp. old fence post (Sta. 1190.6 Page 15)
 ∠ S. to E. to " " 90° 20'
 + 47.1 N.

from Here Davis #1 ∠ St to NE 111° 26' 123.57'
 " ? Iron bar St E 65° 39' 196.5'
 for NE x lot 1

∴ (assuming 5' offset line as North)

0.0 Stone #3	N	S.	E.	W.
1 N 0° 14' W 70.2	70.2			.29
2 N 87° 12' W 116.1		5.67		115.96
3 North 1190.36			145.00	
+ 47.1				
1237.46			1313.33	116.25
* N 68° 34' E. 123.57		45.15		115.02
		1358.48		1.23
	N 0° 03' 06" W.			
		1313.33		116.25
4 th S 65° 39' E. 126.5		52.16		115.24
		1261.17		1.01
	N 0° 02' 46" W.			
				0° 0' 20" - 1261' =
				.12

∴ Stones #1 + #3 are 1358.5' apart
 and Iron bar found (for NE x Blk 1) is 0.12' E.
 of a straight line between Stones #1 + #3

(∴ W 1 Blk 1 is S. 87° 21' 1/2' E. 110.36')

Stone #1 to Iron Bar Calc. (97.31) Meas. 97.3 ✓
 Axle for NE x Blk 4 calc. 0.22 W. of straight 1/8 line.
 - fail to find Stone #2 (this indefinite)

try measuring N on 1/8 S. line 60' (from Iron Bar for NE x
 Blk 1) thence West parallel to W Blk 1 110.24
 This falls about 2.7 E of line of E edge Pelham City produced.
 (at temp. fault 1.02 from ax.)

⊕ Pelham St.

June 14th 1929 4:45 AM Thurs. H.C. Ray, Marshall

Run ⊕ Pelham St by center between curbs at N. side King + by 30' E of S corner of 2 story fr. (56' ± S of S Mercer) ←

25.5 E of W C.W. } opp. in East C.W. Pelham + Art.

32.0 W. of C.W. }

34.6 W of our temp bolt at # st. at N. end ^{arbitr.}

30.00 W. of E. C.W. at N. side of Newbold. ✓

31.2 W. of sta. [?] 360 on S Mercer ✓ (pages)

30.6 W of SW x dd 2 story fr. } N.E. x Pelham ✓

30.5 " " NW x " " } + Mercer

29.2 E of NE x long 2 story fr. (run by) 6' ± N of Mercer. ✓

30.00 W. of SW x Labor Temple (on lot 1 - Blk 3) opp. " " " " make 1/2 arrow on curb 16.5' from this E.

31.2 W of N x Labor Temple ✓

29.62 W of joint at N x Labor Temple ✓
- 30.52 W of old stake hole at N x Labor Temple ✓

29.3 W. of E. C.W. at H. Anderson.

29.7 E of E face Alpine (21 ±) N of Anderson. ✓

29.88 " " " " at Pelham + Stevens ✓

21.9 E of cross for 8' offset. ✓

Decide to swing this line 2' SE at S. end to agree with rec. from RR. (along line late 1 ± Blk 3) (this comes at E. edge East C.W.)

+ To " " old stake holes at N x Blk 3

" " record on Mercer W. from axle. (within 0.1)

This line (platted out) comes.

.115 E of C.W. at NE x Anderson St.

.68 W of N x Labor Temple on lot 1

.68 E of W x " "

> .90 E of joint in C.W. at N x lot 1 (L.T) for old stake hole

.48 E. of N x old 2 story frame at H Mercer

+ E. of W x dd → .26 E of NE x Alpine " just N of window
.12 E "

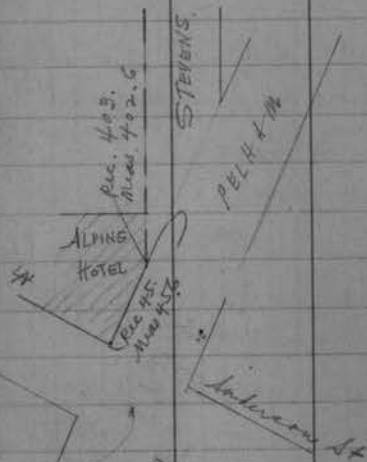
Plat the line 60 ± 1' by 2' ± 1"

Meas. S. or W. line Stevens from Iron Man
S Ex P.O. property.

59.75 about line N. face new bldg, col.

240. S Ex New City Bldg, Oakland Pointing

402.6 } cor of Alpine Hotel.



Meas.	Rec
402.6	60
45.6	60
448.2	120
	240 ✓
	125
	365
	38
	403
	45
	448

This seems to indicate
Alpine bldg. OK for
444 Anderson St as now.
— said to have been built 1893—

Monday, June 17th, 1929 (5 AM - 7.40 AM)
+ Halls.

Line corrected $\frac{1}{2}$ Pelham on 2' offset

Come $59.75 + 2$ 60.68 E of W. Cor. at 4th King.
186 E " E " " " "
30.06 E of cor $\frac{1}{2}$ " " "
60.75 E of NE x Alpine ✓
115 E of CW at NE x Anderson
.89 E of point at N x Labor Temple

(find that we were using point about .07 too far W. at W. corner.
— adjust by measuring $31'$ from our point in $\frac{1}{2}$ Pelham at ")
Make notch in curb N side Anderson .1' E of point
for $\frac{1}{2}$ Pelham.

S " " .44 W " "
" " CW. NE x Anderson.
at NE x Anderson + Pelham, Eats S.
90° 04' 160° 08' ✓

Anderson St. loc N 50° W E V. 2° 45' E.

Meas NWly along N side Anderson from 60' W of our $\frac{1}{2}$ Pelham
as corrected.

362.54 SW corner 2 story Parick at Brown St.
- 359.75 amended record
2.79 (old record = 423.2)

crossed 58' from N. Lot to
189' in SW + 41' S of point

June 7th continued
Same party 9:10 to 1:
Ray, Keith + Mush
6:45 to 8:30 PM

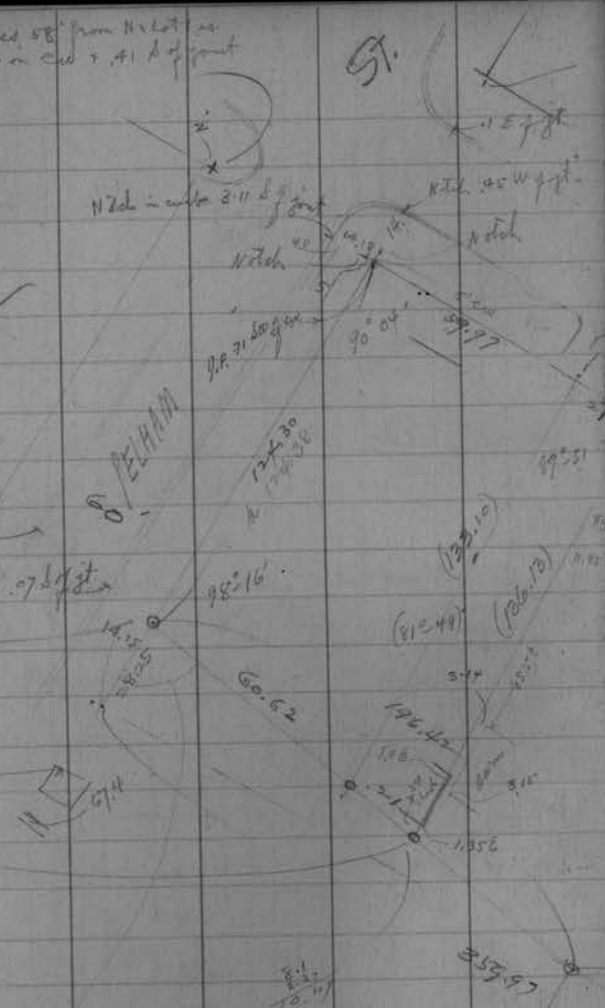
June 18th
H.C. Ray + Mush
1 hr. in AM.

hatch 153 d. 7 ft
steel car and
drive shaft
harrow or gate
house 46.67
drive shaft

8:37 to 4
12.57 to 4
hatch present

813.44
163.28
814.44

3/8" S.P.
10.47 from S Storage
Track



hatch 1.35' to 1.00'
(44 Street 1.08' N of cor.)

hatch 7 1/2' from front of lot
75' on cor. + 48' W of ground for property

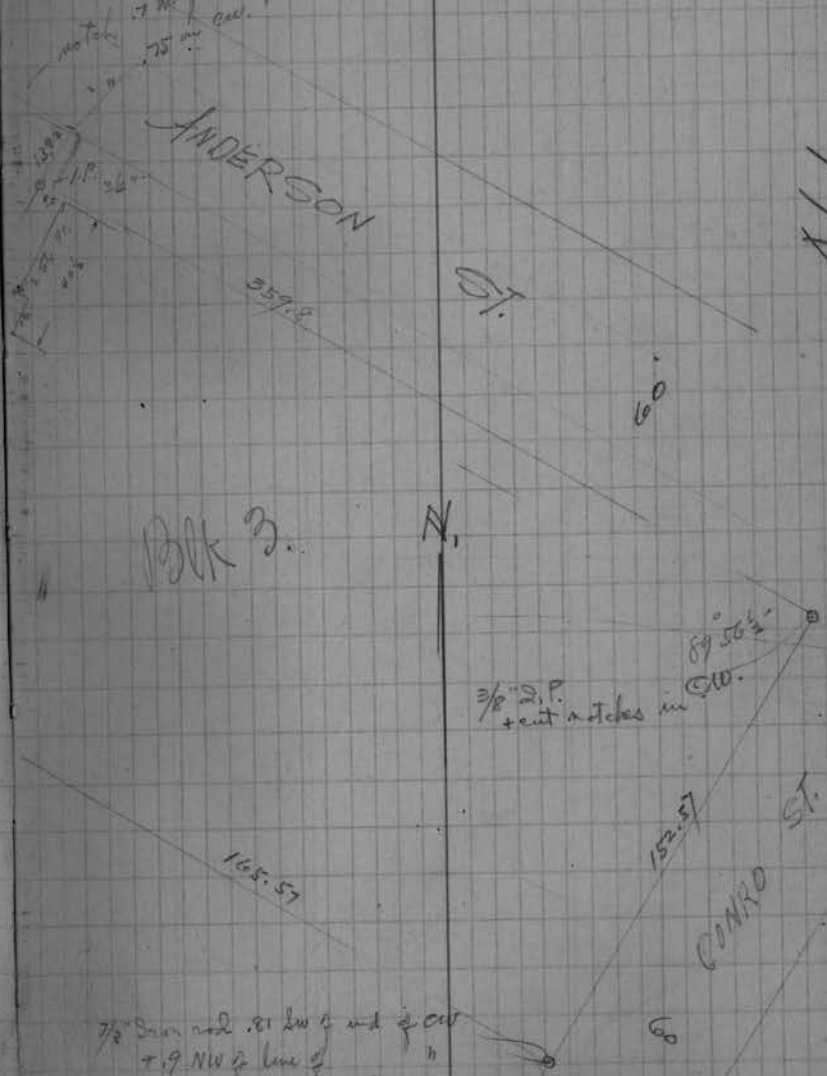
ANDERSON ST.

Blk 3.

N.

3/8" S.P.
+ cut notches in
C.W.

3/8" S.P. road .81' SW of end of cor
+ 9' NW of line of
+ 50.38 from S RR Track



ALL

27

28

ARMORY SITE

R29839

Survey of Lot 4 Blk. 19 of Orig. Plat
Rhinelanders, and North 15' of Lot 3 Blk 19
for Wis. Natl Guard etc
by Col. Clarence J. Wesley

Thurs. Aug. 2 1929 6 AM to 8 AM.

3 Halls. (HC, Ray + Marshall)

Run # Davenport on 3' offset (27' N. of Man) as per sketch
on fly leaf this book.

Only 2 more available being at Stevens + Pelham.
fall

.12 S. of SE x 15' Natl bank bldg. at NW Stevens

.01 S. " SW x do + SE x bldg. 15'

.15 N. of man face 2 city Bk. at Brown. 15' E of Brown +

.15 S. of SE x old city Bk. Conn'l Hotel NE Stevens
S face " " of large window

.27 N + E. of NW x Pelham + Daight

Railway Stevens by Mon. at Rives + Mon at Davenport
(on 3' offset = 17' W. of monuments)

line falls.

1.00 W. of Mon at Frederick.

.41 E. " " King.

— Continued 10m same creek —

.09 W. of + at SWx Stevens + Davenport
(which is 0.14 W. of joint in CW.)

.05 W. of E face old 2 story Bldg at SWx Stevens.
12' S of Davenport

.25 W. of near x do.

.23 E of NEx } New North Bldg. (old 2 story Bldg.)
.35 E of SEx }

.22 E of NEx } A+P Bldg. (2 story Bldg.)
.19 E of SEx }

.15 E of SEx } 1st National Bank (2 story Bldg.)
.20 E of NEx }

.02 ²⁵⁸ W of SEx } 2 story Bldg fatherly shop
.11 ²⁶¹ W of NEx }

0.27 ²⁷³ W of SEx } joint in Cement wall
.39 ²⁶¹ W of NEx } Nash Garage.

1.86 W of + { .90 E of joint } at SWx Rives
.18 S -

4.17 W of + { 1.15 N of joint } NWx " " ✓
.38 E -

Plot out this line on exaggerated scale + find it —
— does not agree with occupation — some bldgs
as noted projecting E. of it + about same numbers
standing W. of it.

Find a second monument in E Rives + for W. line
Stevens. (differs 0.58 with first mon) (19.42)

By projecting a line (on paper) thru this 2nd mon
at Rives and thru mon. at King. we have
a line which falls only about .07 E. of Mon at
Fred'R. and .09 ± E. of mon at Davenport.

This agrees better with the newer bldgs but
cuts SEx 'New North' about .25

See line run to check occupation on E side Stevens
page 37

Run $\frac{1}{2}$ Rives by 30' S. of Mon. at Brown + by
30' S. of mon. at Pelham. (on 3rd offset = 27' from Mon)

.75 $\frac{1}{2}$ of NE $\frac{1}{2}$ of top pillar on Cong Church.

.04 N. of Mon. at Stevens.

.25 N. of NE $\frac{1}{2}$ } 2 story Bk Fire Hall
.30 N. of NW $\frac{1}{2}$ }

.08 N. of $\frac{1}{2}$ of 2nd Mon. found at W Stevens + Rives

1.22 S of CW at SW x Pelham

1.20 S " " SE x Stevens

3.80 S of a + at SE x " \pm

3.72 S of + SW "

Run W Pelham by monuments at Rives + Davenport.
— unable to identify any at Frederick —

Line falls

1.53 W of E of NW x Rives

1.44 W of " SW "

1.6 W of " NW x Davenport

Turn \leftarrow St to W. At NE x Blk 19 (E of Pelham + Rives)

① 90° - 12

② 180° - 23 - 30

③ 270° - 35 - 30

④ 360° - 48° - 30°

Turn \leftarrow W to N at SE x Blk 19 (NW x Davenport + Pelham)

① 89° - 48°

② 179° - 35° - 30°

③ 269° - 25° - 30°

④ 359° - 14° - 30°

Turn \leftarrow E to S. at SW x Rives + Stevens

① 89° 54' - 30"

② 179 - 49

③ 269 - 43

④ 359° - 38 $\frac{1}{2}$ "

V

Temperatures

about

80° - 85° F.

Meas. N. on $\frac{1}{2}$ Blk 17 (W Pelham St)

- 0.27 N. edge CW. on W Davenport.
 0.0 Over W " as run.
 69 $\frac{1}{2}$ line of crooked fence at rear.
 (164.96 take $\frac{1}{2}$ survey)
 239 $\frac{1}{2}$ about line " "
 240 $\frac{1}{2}$ " joint in CW.
 $\frac{237.75}{300}$ take W survey
 line of fence at rear.
 359.92 $\frac{1}{2}$ Rives as run.
 361.14 S. edge CW, at Rives.

R
 60
 120
 180
 240
 300
 360

60
 60
 00
 120
 120
 165 R.

120
 60
 240 R.

360 R
 359.92
 6
 .0133 $\frac{1}{100}$ lot

180.00
 179.96
 15.
 164.96

4 x .0133 = .05
 237.75

Meas. N. on $\frac{1}{2}$ Stevens, from on W Davenport as run.

- 4.49 joint in CW.

0.0 over W Davenport as run

.12 S. face 1st column in old Conil Hotel.

119.99 S. face 2nd story BR.

120.00 ridge in CW.

 $\sqrt{165.00}$ take $\frac{1}{2}$ survey

179.73 joint in CW.

 $\sqrt{180.00}$ have $\frac{1}{2}$ narrow at rec. dist for $\frac{1}{2}$ lot 4

R
 60
 60
 120
 60
 180
 180
 360 R.
 360 M

$\sqrt{240.0}$ loose's narrow for rec. (cross match 3' 10" lot
 141.6 + .265 of joint)
 240.31 joint in CW

360.02 on W Blk 19 as run

(360.00 on 3' line)

Note \rightarrow The Meas. on Pelham, being least obstructed
 & used to calc. dist. Stevens

makes

t. 0.08 for 62° F.

call 1/4th ends

4/359.96
 51.775
 60.00

Sept. 1st 1929.

G.A.M.-

H.C. Ray & Marshall

Run of Stevens St by 40' E of Mon at
King St (E King) by 2nd Mon found at E River
(3' offset)

Line falls

60.02	E of Mon. at S&E PO 2.80	
.20	E of SWx } 2.77	1st story cement bldg off PO.
.23	E of NWx }	
.24	E of SWx } 2.76 2.92	2 story Stucco Res Garage + workshop.
.08	E of NWx }	
.04	E of SWx } 2.97	2 story Plaster front.
.03	E of NWx }	
	+ joint in bricks with 3 story Bk.	
.02	E of NWx } 2.98	" " "
60.00	E of Mon at NE PO Tract.	
.03	E of SWx } 2.97	1st story Brick Garage (Brick)
.07	W of NWx }	
.06	E of SWx } 2.94 3.07	Pres. College 2 story Bk
.07	W of NWx }	

.04 E of Bk col in 1st story Bk at S&E Davenport

40.09 E. of Mon at E Davenport.

OK with SW of old Canal hotel. (Bk. col.)

.09 E of NWx - " "

.32 E of SWx }
2.62
 2 story Daily News Bk. |
.38 E
 E of NWx } |

1.76 E of a + line near NW of Blk 19 (which is 3.80 ft from E River)

= E to S. at NW of Blk 19 to E Stevens as run above

① 89° 58' ② 179° 55' ③ 269° 53' 1/2

Note - Plat this E Stevens, which is a line 60' E of + parallel with the slotted line noted on P. 32 (being a line thru monuments at River (2) & King.

This agrees well with blags. S. of Davenport but does not agree with the two old bricks in Blk 19.

Decide to take each block as unit and use line as orig. run (P. 31) for Blk 19

altho this decreases \angle at NWx from 89° 55' to approx 89° 54'.

This method gives nearest record dist. along W Blk 19

Meas. E. on Φ Rives. from on Φ Stevens on page 38

- .59 edge of C.W.
 - .54 Take edge of Stevens St.
 = 0.0

150 leave $\frac{1}{2}$ arrow line of eaves etc.

151.35 point in C.W.

149.14 for Φ Balock

298.22 on W Palham as run.

298.82
 - .54
 2) 299.36
 per lot 149.68
 star 149.14

151.35
 149.14
 = .21
 w/pt.

Meas. W. on Φ Hancock from on W Palham

- .46 C.W.
 = 0.0 W Palham.

149 \pm line of eaves N.

150 \pm " " W face 19.09 2 story BK S. of Daupt.

150.03 Φ Balock

299.96 W face take col. at Dan Stevens (bottom)

299.95 on Φ Stevens as run.

+ .12 adjusted ment of line

300.07

2) 300.07
 150.035

✓

Sept. 29 1929

PM - (1/2 day)

H.C. Ray + Mich.

levels around Balok 19

1553.64 Top of hydrant at SW x Daupt + Palham (room)
 + 4.30 (from Mr. Washwell - City Mgr.)

57.94 H.I.

- 6.15 curb at NW x Daupt + Palham
 51.79 ✓

- 6.04 Curb at SE x Balok 19
 51.90 ✓

- 2.43

55.81 TP

+ 4.00

59.81 H.I.

- 3.72 Curb at NE x Balok 19
 55.59 (55.6)

52.95
 .07
 52.02

- 3.81 curb at " " "

55.50

- 6.50

- 6.30 Curb at NW x Balok 19
 52.95

52.81 Φ on curb at NW x Balok 19

52.95 TP on C.W.

+ 4.50

57.45 H.I.

- 57.45

- 4.72

53.23 S. in M.H. at Rives + Stevens

57.45

- 4.06

53.39

- 5.16 C.W. at Φ lot 4

52.29

53.23
 .07
 53.30
 8.40
 (44.9)

- 8.42 Bottom M.H.

✓

With root at +3' W. of NW x lot 4
 53.46 church step
 + 37.0
 57.80 H.I.

- 4.18 NS NW x lot 4
 53.2

- 5.33
 52.00 NS S. 75' property

57.36
 - 5.42
 51.94 Cur at E lot 4 (broken away at E property)

- 5.59 curb - - -
 51.77
 57.36
 - 6.75
 50.61 gas line

57.94
 50.61
 1.33
 gas. below cur.

57.45
 - 6.14
 51.31 TP.
 + 4.77
 56.08 HI

- 5.37 curb at 4th St.
 52.08

- 5.31 cur at SW x 15th St
 50.77

- 5.52 curb
 50.56

56.08
 - 4.75
 51.33
 51.40
 51.45 S. rim N. H.H. Davenport + stairs

51.40
 .05
 51.45 Sewer H.H.
 11.16
 40.29

- 4.79
 51.29 TP.
 + 5.58
 56.87 HI.
 - 2.56

54.31 US Btm on P.O.
 54.38 Rec.
 .07 int.

Continue

56.87 HI.
 - 5.58
 51.29 TP
 + 4.78
 56.07 HI.
 - 2.47
 53.60

51.29
 5.71
 57.00 HI.
 - 3.61
 53.39 church step.
 + .07
 53.46 church step.

51.40 S. Rim of MH at Davenport.
 + 4.47
 55.87 HI.
 - 4.42
 51.45 rim of MH. (Sewer)
 - 11.16
 40.29 bottom

- 11.16
 bottom Sewer on
 Davenport + Stairs
 below MH. rim.
 flows W. ?

56.07
 - 4.77
 51.30 TP
 + 5.09
 56.39 HI
 - 2.79
 53.60 top of hydrant at P.O.
 53.64 Rec.
 1.04

Add .07 to
 my figures to
 agree with P.O.
 BM

Sept 4th 1929 GAW - 8 AM (1/4 day)
 3 Halls, (Ac. R.H. M.H) Dig out drains - open Man Holes etc
 Curt at # 9.75' from E Stevens as taken (see page 39)
 # 9.8' - - -
 prop. 9.87

(which is in cut. 40.6'S + 4.75 W. of NW corner)

On 3' line, opp. water shut-off. 0° Az. line North.

53.46 chas. step

+ 3.35

56.81 H.I.

88 1/2°

- 6.17

50.62

gas

15'

93 3/4°

- 10.45

46.36

min.

22'

11.92

44.89

bottom catch basin ①

97° 10'

10.07

46.74

min

24'

12.05

44.76

main catch basin ②

Catch basin ① meas 44 1/2' ± S of # Lot 4. + 75' E 1/4 from water shut-off

Sept 5th 1929 PM 1/2 day fair 75°

H.C. Ray - Marshall

Run E Polk 19 (NHS) on 5' offset W.

Run # Lot 4 thru Block on 6' offset North -

comes exactly 4.00 feet S. of N. face 2 story Brick

Telephone Pddy across Stevens (+ 6 = 10.00)

Drive 1 3/4" x 30" boiler flues for rear ^{property.} ~~lot~~ corners and for front corner of a round iron rod .05' E of CW at NW x

- square - -

at SW x property

- set No markers at E Lot # -

149.14

149.69

ST.

89° 54' 20"

9.8'

240

75.00

(page 36)
360.00

9.99

15

149.60
76
+ .60
24

STEVENS
Concrete Cont-

11' 0" Cb.

(90.05)

6.0

150.03

2 story Bk
Tel. Co.

1000 S. ft for Hdy

1/2 1000 Bk at 1/2
105 2 1/2 cell.

Space from Rod at 2
2 story Bk.

298.82

299.36
- 147.02
149.14 (see page 39)

90° 15'

60

Anchor line at x
Anchor 195.5 + 5.8
(10' wide)

75.00
Anchor 15E

3.8

9.8

Anchor line
at corner

239.95

359.92 (see page 35)

ST.

PELHAM

119.96

89° 44' 30"

150.03

300.07

DANFORTH

ST.

(See page 39 for further levels etc) for the contractor.

R30370

for M. A. Sharkey 213 S. Brown St.

Check up lines of Brown & Anderson St.
to determine location of facing on Sharkey
New bldg. on part of Lot 2 Blk 2 (1st Addy to R.)

Mar. ^{25th} 21 1930 6 AM + 20° F

H.C. Ray & Marshall.

At man in E King + 20' E of W Brown
which is punch mark in water plug.

Sight down E King St to similar mark at
Stevens. (30.00' E of P.C. Mon.)

(View N on Brown (20' line) obstructed)

Run E King by 2' offset by 28' S. of E line

Line falls

.31	1.07-2	S. of Brick col. on old frame SW x Stevens
	1.08	
.02	1.06	S. of NW x Pattern (brick) laundry
.10	1.06	S. Center - " - "
.24	1.76	S. of NW x " - "
	1.81	
.19	1.49	S. of NE x old 2 nd story bldg. (Chrysler sales)
.51	1.49	S. of NW x " - "
OK with		N. of E x new Montgomery Ward bldg.
.03	2.03	N. of NW x " - "

Run E Brown St. (on 2' offset west) by 58.00'
E. of monuments at Rives + at King.

(The " at Davenport has been taken out - apparently -)

There is a small round brass marker at E King + E Brown
- we find this 60.00' E of mon. + OK for E.

E Brown as run falls:

.02	W. of	2.02-2	NW x Montgomery Ward bldg.
.03	E. of	1.97-2	SW x " - "
		2.46	
.46	W. of	2.33	NW cor. 2 story S.F. (Sharkey Buick)
.33	N. of		SW x " - "

Measure S. along 4th Blk 2

84.9 ± S. end M.W. bldg.

185 ± S. of Sharkey bldg.

(Merrill Beard gives)
60
138.7
178.7

Main flat gives 60 + 75
135

E Brown with E King N to E

89.30' (one turn only)

Note - B.F. Davis B. & P. 170 gives very close to 135'

for W. line Blk 2. Davis meas. was in E Brown St.
+ his angle with 4th Anderson was 48° 05' No date

R30372

for Carl Kettner — Marshall St.

Beginning at NE cor. lot 1 Blk 3, th. Wly
 along N. line said lot 1 Blk. to within 10.00 ft. of
 NW cor. sd. lot 1; thence Sly on a line parallel to &
 10' dist from W. line lot 1 a dist of 90.00 ft; th. Ely (parallel
 to N. line) to NWly line of Moen St. th. Nely along St. line to

March 25th 1930 P.M. 30° P.O.B.
 Ray + Keith (2 hrs.) looking up stakes etc
 too much frost for satisfactory work.

March 31st P.M. (1 1/2 hrs)
 Ray, Keith + Marshall - find more irons etc

April 4th
 H.C. Ray + Keith (1 hr)

April 5th 1930 PM 60°
4 halls.

At $\frac{1}{2}$ found at $SE \times$ Blk 3 turn W to NE.
from face stone at river + hole where corner
said to have been at $SE \times$ Blk 4.

$$\textcircled{1} 129 = 28 \quad \textcircled{2} 258 = 56' \quad (\text{Rec} = 129 \times 30')$$

Meas. Slope from $NE \times$ Blk 3 down bolt

117.00 stake iron found OK. find
(116.46 drive square head iron bolt)

181.00 2 P. found for W alley, OK for line.
196.8 2 iron bars " " " " .3 W 7 "
377.75 iron pipe at $SE \times$ Blk 3.

Angle at $NE \times$ Blk 3 S10 to W. to $\frac{1}{2}$ stone found
 $\textcircled{1} 50 = 36' \quad \textcircled{2} 101.0 \quad (50 \times 35 = \textcircled{3}) \quad 151 = 46 \frac{1}{2}$

Meas. N from old stake at $\frac{1}{2}$ alley (W. end) Blk 3)

151.75 * find old stake at $NW \times$ Blk 2

$\frac{151.75}{- .13} = 151.88$ " another " + drive 2 P for err

\angle at $NE \times$ $50 - 36 = 15''$ (50' E of W Reik)

Meas. W on N Blk 3.

@ 105.4 drive iron bolt for Kethner's $NW \times$

@ 115.4 drive iron axle for $NW \times$ lot 1

$$\begin{array}{r} 115.4 \\ + 49.0 \\ \hline 605.4 \end{array} \checkmark \text{ OK with stake at } NW \times \checkmark (= \text{Record})$$

\angle angle at $NW \times$ $90 = 06''$ to iron bolt we drove on
W. side old stake found at S. side alley.

90-04 to line of said old stake

$\checkmark \angle$ N to E, at $SW \times$ lot 11. $89 = 57$

Meas. E on W alley

$$\begin{array}{r} 90 + 6 \times 50 = 390 \\ \quad \quad \quad 50.5 \\ \hline 440.5 \end{array} \text{ 2 P found. } \begin{array}{r} 390 \\ 108.6 \\ \hline 490.6 \end{array}$$

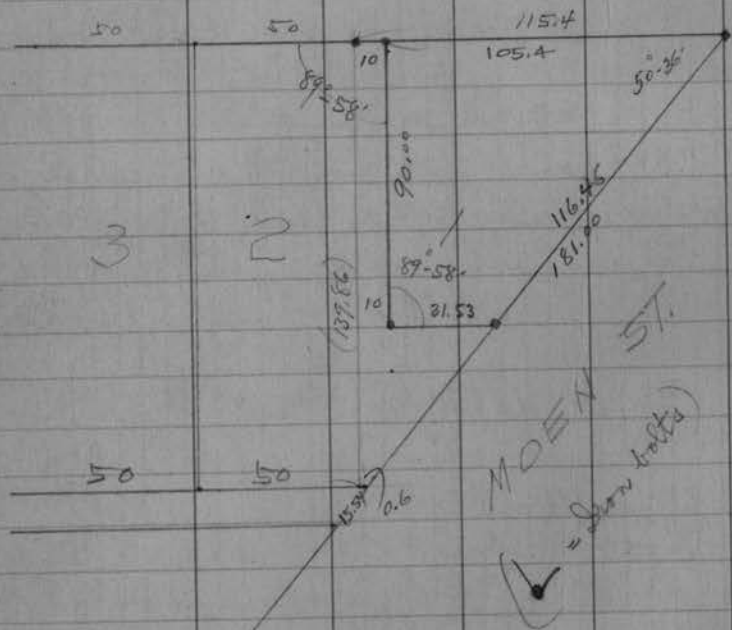
$\therefore 440.5$ 2 P. found
 490.6 " " for $SE \times$ lot 1

$\left\{ \begin{array}{l} \frac{1}{2} W. \text{ of } \frac{1}{2} P. \text{ at } \frac{1}{2} \text{ alley} = 90^\circ \text{ W to L. at } NW \times \text{ lot 2} \\ 16 \end{array} \right.$ $89.56 \dots$ $50 = 36$ $\frac{NE \times}{Blk 3}$

At 105.4 \angle W to S. 89-59' (10' from line

N.

MARSHALL ST.



Note — Whoever has worked here treated the S. end lot 1 as a point (whereas we claim 0.6 width) and they used this as SE \times lot 2. The recorded plat shows a space here but no figure and shows all even records from SW \times lot 11. We found exactly record on N. Blk 3, so took alley same.

City work

#R 30373

Survey to determine approx. W. line of
Lot 1 Blk. 25 in 2nd Addⁿ to R.R.
- for planting of shrubs only -

for Dr. R. P. Kirsch, dentist.

April 14th 1930 11 AM

4 walls.

Run W. Baird by 30' W. of Φ between curbs at
W. Lincoln & at N. Clark.

Offset 6'

Line falls

- | | | | | |
|-----|---------------|------|------|---|
| .35 | 43 | W of | 5.57 | Cement garage found. at alley Blk 24 |
| .61 | 70 | W | 5.30 | wall 33' \pm S. of alley |
| .26 | 38 | W of | 5.62 | rough stone wall just N of Atlantic |
| .43 | 40 | W of | 5.40 | perp. cement wall (N. end) about 80'
N of alley Blk 25 |
| .67 | 45 | W of | 5.15 | box garage on L. B. 1-25 |
| .36 | 46 | W of | 5.4 | curb at Φ Lot 12-25 parallel |

Note - I had error of .5 had been made in getting
 Φ between curbs at Lincoln

2/29.75
14.87
14.30 M.
- .50 too far W.

Rec = 1440) .5 (.000347

$$\begin{array}{l} \dots 347 \times \left\{ \begin{array}{l} 220 = .08 + 5.57 = 5.65 - 6 = .35 \\ 253 = .09 + 5.30 = 5.39 - 6 = .61 \\ 385 = .12 + 5.62 = 5.74 - 6 = .26 \\ 420 = .15 - 1.00 = .85 \text{ at } 44 \text{ Kirsch} \\ 480 = .17 + 5.40 = 5.57 - 6 = .43 \\ 530 = .18 + 5.15 = 5.33 - 6 = .67 \\ 500 = .19 \\ 650 = .23 + 5.4 = 5.64 - 6 = .36 \end{array} \right. \end{array}$$

There seems to be nothing definite nor uniform in the
occupation along Baird. If the street is ever improved
the paving will doubtless be a continuation of curb
lines as we run it.

N. line

Meas. E. on S side Atlantic from joint between
Cement walks of different widths stages.

Only sign of property line is this joint + short
section of fence at rear of lots.

- 89.8 E (Curbs) Onida 89.85

- 60.98 CW at E. side Onida 59.85

0.0 joint in CW + jog
off fence in rear.

60.26 E edge private CW 59.85 59.88

180.84 joint + jog in CW 179.57 179.55

✓ 239.38 pr. (42 E. ft) 239.38 239.38

240 Rec.

300.08

85

299.23 299.23

299.23 to one W Board as adjusted.

① 5) 299.23 (59.846) inch lot

89.8
- 36.
53.8
299.23
359.03
360

179.538
239.384
59.846
299.23

299.23
59.84
239.39
240.

② ✓

299.23
59.8
6) 259.03
59.838
- 59.80
.04 E. at 576

.67 W

359.03
97 dist = 20323

Ag adjust in 60.
.16

Alley line

Meas. E. on W alley. Balke 25 from old fence

- 60.6 C.W. Onida

- 89.5 Center curbs. "

0.0 old fence at rear lots 576

60.1 about line of eaves. E side barn 60.29

119.8 line E face old fr. S. of alley 120.19

182.5 old fence cor.

180.087

✓ 239.83 pr. for 44 Lot 1

239.98

240. Rec.

305.69 over effect line

- 6.

299.69

299.88

first
over adjusted 44 Board
adjusted

299.88

② - 89.5
36
53.5
299.69

6) 359.19

59.865 each lot

- 57.5

59.865 E. at 576

60.23

120.095

.00225 x .14

179.96

239.825

299.69

98
13 E
- 15 E

299.69
- 59.86
239.83
240.

.17 W at alley

①

5) 299.69 (59.938)

x 119.876

179.814

239.752

299.69

Plotted
in Co. F.B

R30162

Survey of Lot 15 Blk 8 in
Pelican Addm to Rhd.

- principally the N boundary & S boundary
(C.D. Vaughan's survey of last summer
apparently not satisfactory.)

for Wm E. Carlson - 1021 Keenan

61

62

63

64

R 30690

Survey of N. line lot 2 Blk 7
in Kreehan's Add.

for Ed Yanke 710 Margaret

June 23^d 1930

Ray, Keith + Mush (2 hrs)

∠ of C.W. at SW x Kemp + Margaret St to W.

92° 45' ±

∠ " " + line of iron

" " 92° 10' ±

Meas. E. from Iron bolt for NW x Blk 9

149.80 on iron pipe

150. Rec.

149.88
151.88 1

150.22 on iron Pipe

150.32 W. edge C.W.

Since we found this iron bar 0.12 E. of line I

try 149.88 for W Margaret + mark 2 iron ^{2'} feet

Meas E. from Axle (for NW x Blk 5)

150.61 C.W.

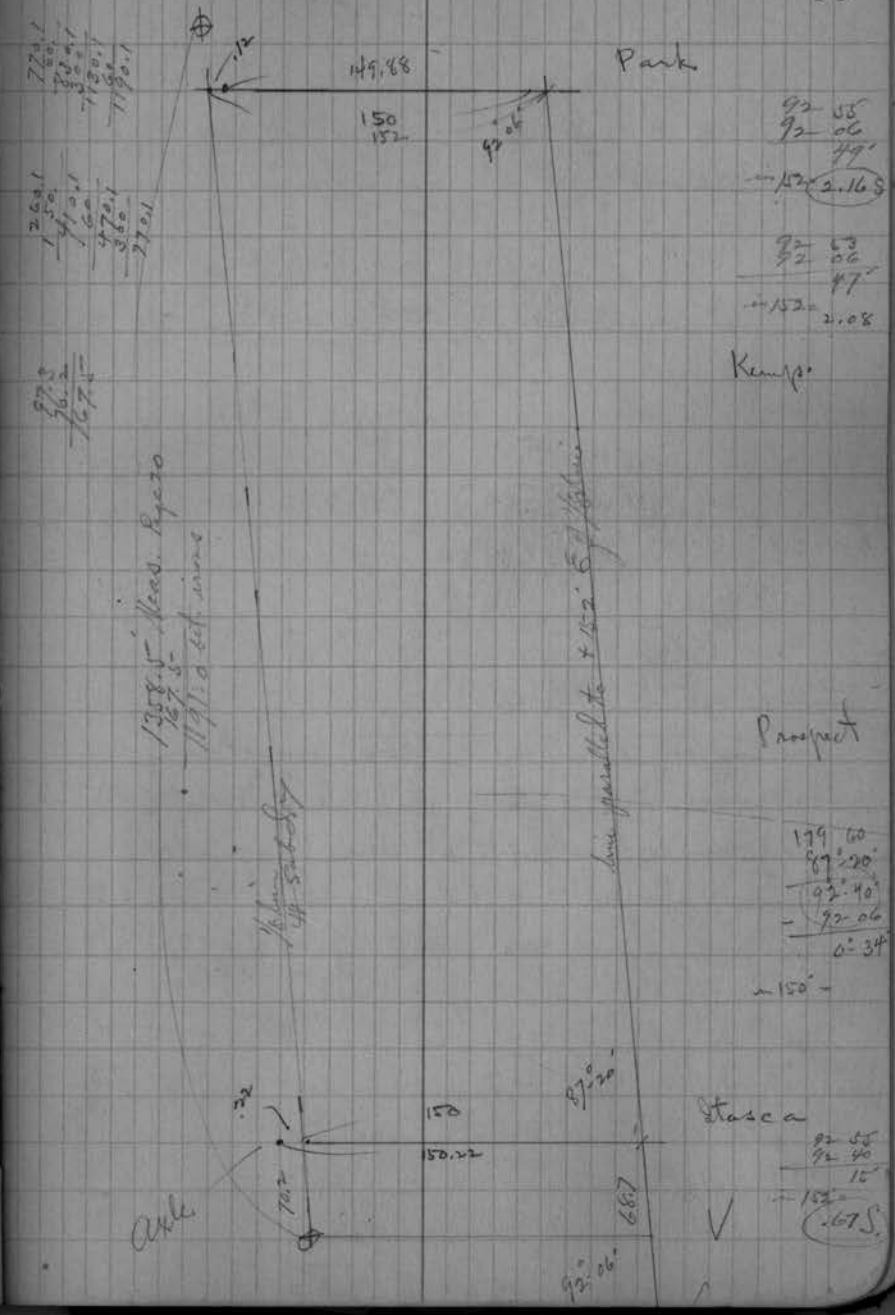
152.22 Take 2' offset line

152.22
150.61
1.61 on C.W.

Sight thru on Margaret

∠ at our point at Stasca (29 N. of Jt)

87° 20' to N. to line // to iron bars



92° 53'
92° 06'
47'
--- 152 = 2.16 S
92° 53'
92° 06'
47'
--- 152 = 2.08

Kemp

Prospect

179.60
87° 20'
92° 40'
- 92° 06'
0° 34'
- 150 -

Stasca

92° 53'
92° 40'
15'
--- 152 = 1.67 S

Our mark opp. Dufrain fence is

.28 N of jt.

1.41 E of post

1.34 " " C.W.

" " at SWx Kemp is 1.39 E. of post

" at Park. (1.19 feet N) - SW 72° 06'

point = 1.84 N. of jt

(2.6 + 1.1) 1.52 E of C.W.

Note - on sketch page 66.

Our meas of 152.22 on $\frac{1}{2}$ Stasca being taken
on course 0° 34' SE of parallel at Park.

Would make our point at Stasca $\frac{1}{2}$ of way of
where I intended. + 1.50 S. of where I intended.

We find hole for NWx Blk 5 70.23 N of Stasca
69.8 of Rec
- .43 ramp.

\therefore Should meas Shy 68.7 from our first point at Stasca
to be opposite Davis monument #3

June 28th 1930 70°
Mr. Ray (Keith + Mack, 3/4 hr.)
Mess. S. along 2' line (on W side Margaret)

0.0 line of G.P. + bolt.

+ $\frac{.84}{2.08}$ joint according to Davis + in P.L. Point

313.15 joint + line of fence. 311.24 Remarks 313.22

362 line of fence 360.5

412.44 joint 410.55 " 412.51
.53

414.1 line of C.W. E. (no C.W. W)

471 line of C.W. E. 470.67

472.12 joint at Dufrain corner + C.W. W.

522.18 joint 530.68

527.19 " + line S from Dufrain fence

572.70 joint + line of hedge 570.73

622.82 " " " fence 620.79

— continue on page 70 —

69
R30573

Armory Site

(See pages 29 to 46 for our survey)

line & levels at Armory site
for the Contractor, Mr. Gardner

May 5th 1930 AM 80° Windy (Khr.)
Check line on Stevens st. (H.C. Ray & Keith)
I line up by .05 E of CW at Rivin (Sax) + by .04 E of
NW x Daily News brick. (direct sight)
line falls a little E of \perp bolt at NW x + somewhat west
of \perp bolt at SW x — give marks on forms.
H.C. Ray & Keith. PM (1 hr)

Set stakes near NW x lot with top 6" above CW x
at point opposite corner.
Transit on S. side. Rod 2.74
Drive stakes near each cor. "
Set up N. of site + check Rod 4.55 all around ✓

May 10th Same party Levels for Caissons

* 2.66 Rod Reading for Pier #1
- 9.58 "
6.92 "

Set 15 pier stakes on level - "
= R.R 9.58 ✓

Postal

Yanke Survey (continued from page 68)

722.60 joint + line of old fence 720.9
774.88 " " few E+W. 770.95
828.1 = line of Bk slp. just W of sub-line
928.35 joint apparently at property line 931.13
1081.5 short fence in rear. 1081.3
~~482~~
1132.86 joint + CW W. 1131.35
1132.7 line of " E.
1191.08
1192.52 over A.P. at S. side Steady. 1191.72
+ " approx line of CW in Sub-lin E.
1264 line of garages to E. ①

Rec. (on 2 lines) = 1259.8 ✓
less parallel 1261.2 ✓
1260 11.4

1192.5
I conclude there is something
erroneous in the way this was staked out.
- Will try to get the \perp Sec. by Davis' monuments
+ see what angle is formed with the sub-line

page 72

Try taking Blk 7 as a unit defined by the C.W.
+ allowing 1' at N. end + at S. end.

Ja 774.80 CW on S.
472.12 " N

302.68
- 2.68 CW.
6/300.68
50.11 per lot

	Occupation
472.12	
473.12	
528.23	527.19
573.34	572.70
623.42	622.82
673.52	
723.67	722.60
773.78	773.80

Try Blk 8 by 60' N. of above.

473.12	4.91	260.1	02.
- 60.		262.01	
413.12		312.382	313.11
410.1 R		362.75	362
410.1 } 3.02 ramp		50.37	413.1
.00736	x 50 = .368		
	x 260 = 1.914		

1132.86	583.80
833.80	47.08
6/299.26	883.98
47.68	733.16
	982.84
	1032.52
	1082.20 + 1131.38

Blk 7 = 50.11 per lot

Blk 8 = 50.37 per lot

1/10000
to each

Try Blk 6 by foregoing plan

April 10th '31 Ray & Keith 1 1/2 hrs.

Ran Φ Stasca by record dist N. of above times

+ 5' offset N. line falls.

1.07 S. from previous point at Margaret
.68 S. 3/4 joint (at 1.61 on C.W.)
6.71 S. of R. end of C.W.
60.72 S. of C.W. West. =

55.72	
5.	
60.72	
1132.86	
1193.58	
- 11.07	
1192.51	

@ 1193.58 on or near (of 7') intersect
true Φ Stasca (by Rec. N. of Φ Sec.)

Run \perp N to E from our 1st
to Margaret to line of monument. @ 145° 49' / 92° 55'

1191.5 assumed vs. by reverse.
1193.58 - meas. from S. of joint
2.08 (for N. to Blk 8?)

1358.5	bet. stones
- 97.3	+3
1261.2	from
+ 206.3	from
67.8	margin
1191.5	Φ Stasca
1190.1	
1261.3	1.4 ramp
	.00111 mi'

= 50.055 per 50' lot
= 60.067 " street
= 260.39 outlot

Our meas. of 4 Margaret (June 1930) page 68
 found from point 2.08 S of sta. 0.

Sta. as meas.		with Sta. 2.08 S		Record.
0.0		- 2.08		
.84	joint	- 1.24		
2.08		0.0		
313.15	"	311.07	+ cores	310.1
362		359.9	line fence	360.1
412.44	"	410.36		410.1
414.1		412	" - C.W. (E.W.)	
471		468.9	" " "	470.1
472.12	"	470.04	" " "	
522.18	"	520.1		520.1
527.19	joint	525.11	+ line S fence	
572.70	"	570.62	+ hedge	570.1
622.82	"	620.74	+ fence	620.1
722.60	"	720.52	+ line dd fence	720.1
774.80	"	772.72	" - C.W. (E.W.)	770.1
828.1 ⁺	"	826 ⁺	" " K fence brick	830.1
928.35	"	926.27		930.1
1081.5		1079.4	" - fence (meas)	1080.1
1132.86	"	1130.78	C.W. W	1130.1
1134.7		1132.6	line C.W. E	
1192.52		1190.44	temp - pt.	1190.1
1193.58		1191.5	± Stasca	1259.9
1264		1262		

from station
0.0

P.R.

179 60
 92.55
 87.05 ✓
 N to W line all lot
 lines to be parallel
 to E sec.

472.70
 472.58
 572.81
 572.58

310.45
 360.50
 410.56

312.53
 362.58
 412.64

470.62 472.70 Take S Kemp St.

520.68 522.76 " H lot 2
 " E " 2

570.73 572.81
 620.79 622.87
 720.90 722.98
 770.95 773.03
 831.02 833.1
 931.13 933.21
 1081.30 1083.38
 1131.35 1133.43
 1191.42 1193.50

1259.9
 1190.1
 69.8 R
 72.5 Start

(Continue on page 83)

Posted

1261.3 1263.38

50.00
 30.06

Lot 2 Blk. 3 in 2nd Replat C+D

R307103

for H. H. Krause Eastern Ave.

Survey of Lot 2 in Blk. 3 in ~~Barrows 2nd~~
 Replat, Hill Lots C+D.
 for portion of (Sec. 31-37-9)

July 29th 1930
 4 Halls.

1:30 PM overcast. 65° 70°
 to 4:15 PM

Meas. N. on E. side Blk 3, W. Thayer.

- 55.7 c.w. at E side High St.

- 27.37 \pm bet curbs.

- .69 joint

0.0 S. face low curbing (cement)

→ 2.60 Take N. line High St by
 ϕ between curbs (+30")

62.16 joint

62.36 N end low curbing + line of
 gaves in rear.

→ 62.97 * lot 1

121.43 joint

122.06 \pm N end low curbing + line of fence

181.13 joint opp occupation

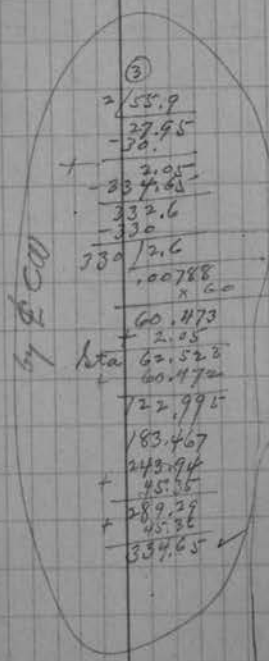
243.51 joint

244.6 round iron bolt found. 0.28 W. of C.D. 44.78

289.6 iron pipe.

331.9 N end C.W. Rec = 330

334.65 - S.P. found.



(1)
 6.0
 240.0
 28.0
 268.0
 Rec. 330
 334.65

330) 4.65
 .0141
 x .60
 .85
 60.85
 121.70
 182.55
 243.40
 289.03
 334.66

(2)
 30
 - 27.4
 2.6
 - 334.65
 332.05
 330

330) 2.05
 .0062
 x .60
 60.3720
 60.372
 120.744
 181.12
 241.49
 286.77
 286.77
 332.05
 + 2.60 =

Meas. S. on W side Thayer along E line Blk 2

- 30.0 \pm set curbs on High. St.

- 1.47 joint

0.0

on slope 1.02 joint + line of old fence across st. E.

60.8 joint + S face stone ret. wall

120.34 " " cement

182.51 joint

184.1 \pm line of S. face of wall (high stone)

240.49 joint

241.4 S face stone wall

375.52 S face N curb

+ 31.8

407.3 N face S curb.

407.3
- 375.52
= 31.8

①

Sta. 60.237

120.47

180.71

240.95

301.19

361.42

375.52

- 15.9

= 391.42

- 30.

= 361.42 to ~~44~~ Harney

- 360.

= 1.42 curbs

1.42 curbs = 1.37 mallet =

dist bet. property curbs at ⁺N High St. (across Thayer)

57.4

Meas. W along N High St.

- 30. Centre bet curbs

= .84 joint (Wedge Curb + E. edge low curbing)

0.0

149.4 about line of fence N (indf.)

150. leave $\frac{1}{2}$ curbs

is opposite fence + sheds S.

303.05 joint + Curb on E side Harney

360.1 Wedge Curb. W - "

Find old stake at SW x Blk 3 (NE x High + Harney)

1.38 N of curb + E of

1.76 E of curb

+ 60 \pm N of fence line.

303.05
- .76
= 302.29
/ 151.14

Meas. N along W Blk 3. from said old stake.

Rec =
6x10

57.05 ± joint + joint in sheds (near)

120.59 " in C.W. + line of eaves.

177 line + " sheds.

180.8 joint (old + new walks)

240 line of fence

241.72 joint.

292.15 " old + new walks + fence^{old}

330 about line of fence W.

362.8 S eaves stone Blk.

Check S. on E Blk 3 from old fence at S of alley.

48 old fence W.

98 new " "

116
49.7

159.7 occupation

220.5 (2 old posts) at lot cor.

281

occ.

539.8 S side bottom old fence post. at N side High

100
60
160
220
280
340

July 30th 8:30 to 10:30 AM
+ walk

Run $\frac{1}{2}$ Blk 3 by old stakes at SWx + by S. face
of fence post at SWx lot 1.

Intersect our meas. on E side block at sta 3.41

337.63
237.20
338.
330 11.12
10036
60.22
3.43
63.67
60.22
123.89
184.11
240.83
46.12
289.49
337.63

N.G.

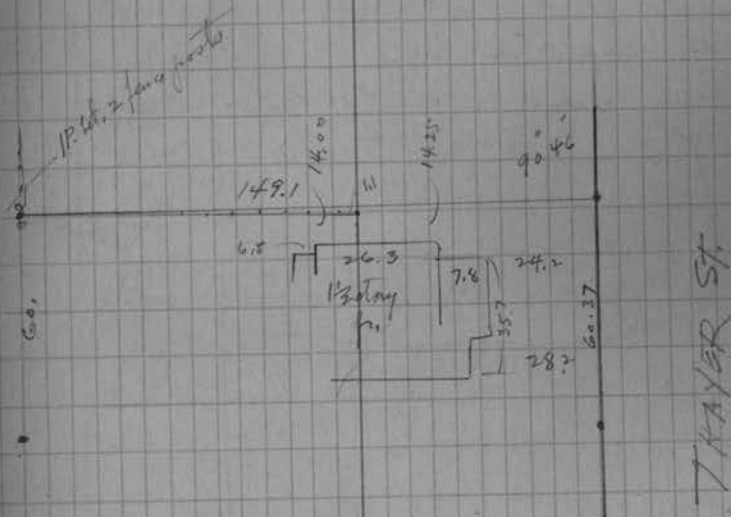
Run W. Thayer by 30' W of
bet curb near N end + end Blk 3.
line falls.

- .33 W of iron bolt at
- .30 W of pipe at
- .45 W of GP for N E blk.

Drive $\frac{1}{2}$ D.P. at Sta 123.34 + on above line
30' W of curb center line.

This is 0.5 W of SW.

14.25
14.00
5' cur.
4' cur.



Posted in Co. field book

Comment —

This block is very poorly defined, the old
fence then the Centre being the best evidence available.
Lot 1 has been occupied a long time but the lawn
+ combing is considerable S. of High St. according to
the bet. curbs on High St. + by occupation along High St.
The iron pipe found for N E x Blk seems about right
but the irons for front of lot 5 are merely record of it.
The N W corner of the block does not agree with record
whatever and is not well defined.
For rear of lot 2 we used the old fence corners.

Lot 2, Blk 7 Keenans Addn.

(Ed Yantis Survey.)

April 11th '31 Ray, Keith & Mush. 1 PM to 4
 Begun Page 65 (Continued from Page 74)

Find hours cast block 5x6" with hole in top
 7" below surface (for S $\frac{1}{2}$ on $\frac{1}{2}$ G) **Dove 2/34**

4.05

2.37

6.42 NE of $\frac{1}{2}$ Main track

1.00

60.65 W of W. edge Oneida C&P

Meas. S. (parallel to Oneida) from sd. iron $\frac{1}{8}$

60.

+ 50

110 take point (on 4' offset from S.)

Run $\frac{1}{2}$ Park by 114' Sq. iron - 4' offset
 + by Iron 97.3 S. of Stoa +

line falls.

4+152

5.52 S. of top of cement curbing of lawn
 at SW x Dove + Park.79 S of CW at S $\frac{1}{2}$ x Keenan

1.4 S

2.22 S. of iron sta 0.0 on Marg.

1.37 S. of point

New C&P

✓

New CW now occupies area N. of joint.

Relocate our Sta. 0.0 by .84 N of jt +
 156m C&P. Remove a dirt S from
 old 0.0

313.22 joint (formerly 313.15

412.52 " " 412.44

412.52
 - .10

 412.42

.00 + 19

X 313.22

313.22

313.21 ✓

Mark temp cross on C&P 156m C&P + 26m
 4' N of line + 2' E of line

Run = W to N 87° 05' 40"

172.59 60

87.05 15

= 92.54 45

- 02 40

92.52 05

Time

1930

1931

Ray 6+2

3 $\frac{1}{2}$ + 4 + 3 + 1 + 2 + 1 + 4 = 18 $\frac{3}{2}$

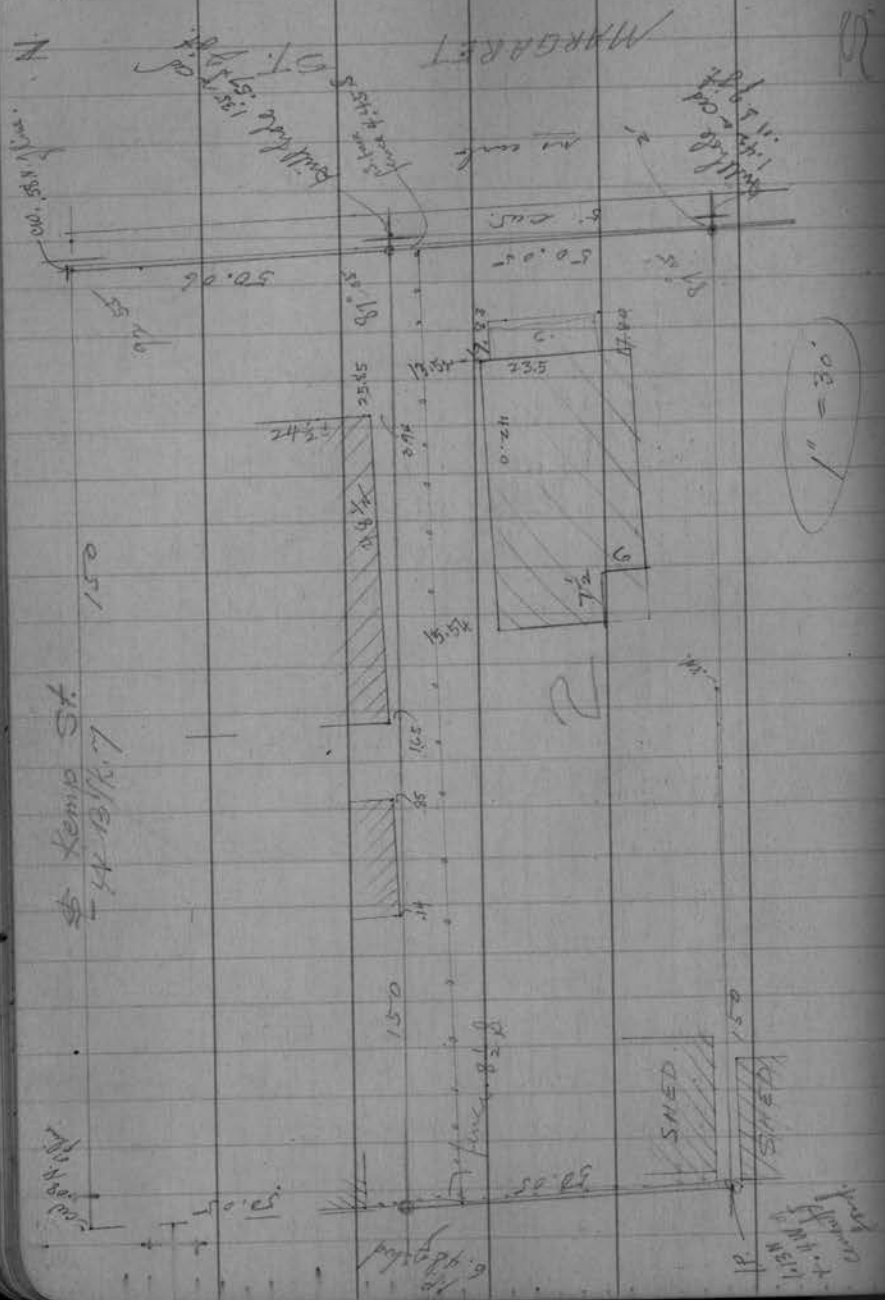
Keith 3 hrs

1 $\frac{1}{2}$ + 3 + 2 = 6 $\frac{1}{2}$ = 9 $\frac{1}{2}$

Mush 3.

3 + 2 = 5 = 8

Note — Since Davis figures for Keenans Addn
 + for Keenans 2nd Addn indicate that the
 line of Park St. diverges slightly (4' in 510') = .12 in 152'
 from parallel with $\frac{1}{2}$ Sec. as it goes E. and on Bl. 114
 + Keenans 2nd Addn record figures make Park parallel
 with $\frac{1}{2}$ Sec. I decide to take SW x Park + Margaret 2.08 +
 S. of former sta 0.0 (The line to 114' S $\frac{1}{2}$ $\frac{1}{2}$ gives 2.22)



April 13th '31 9:45 AM to 12 .55

Res. Mush & Keith.

Drill hole in (old) CW 2' E of SW x Margaret & Park.

- this is on the 4th Keenan's Add and is 14'

N of Φ Park as in straight thru.

$\left\{ \begin{array}{l} 1.57 \text{ E. edge of CW.} \\ 1.23 \text{ of joint in } \end{array} \right.$

Set up Φ .74' N of Φ Kemp. + on 2' offset E. Turn N to W

87' 0"

Φ Kemp fall .08 S. of CW near NW slot 1 .6 w/g garage
 .09 S. " " " " .68 E of ft.

Run line of 102 on 5' offset N. fall -

13.52 N. of Φ Ex. Yankee house
 $\left. \begin{array}{l} 2.52 + 5 \\ 6.94 - 5 \end{array} \right\}$

3.94 S of Ex. Dupain

$\left(\begin{array}{l} 27.95 - 2 \\ 25.65 \end{array} \right)$ 0.7 km

15.54 N of NW of house
 $\left. \begin{array}{l} 10.54 + 5 \\ 16.65 - 5 \end{array} \right\}$

1.65 S. of SW x D. "

.85 S of Ex. " shed. } shed 18' x long +
 } 12' x
 } back of D. house
 .14 S of Ex. shed. (Duf.) }

11.15 + 2
13.15 S of S. Yankee house
11.47 S of S. Yankee house

.8 S. of 2nd fence (273)

April 13th PM. Same party. 1:30 to 3:30 PM
Ray 4:30 to 5:30 + 8 PM to 9

Went 150 or less N of S. Yankee house.

Thence S 87° 05' + line near river

+ 50.05 + 2 + 50.05

Thence S 2° to point S of iron at S park 7th S. side
+ 1° 00'

Since we found said iron 0.12 S of 2nd line -

∴ 8.12 in 468' = .01735 = Tan $\theta = 99^{\circ} 40'$
- 0 57 60
- 0 0 20
100' = .01

Put in Boulder files + locate Bldgs. as in sketch

Note - fence shown runs to join fence for S
of the N. lot of Bldg 2 S. Park Area
which is a 60' lot. ✓

Graves on N. line of 2nd + on S. line of lot 3 project
open on to lot 2.

Plotted in County Field Book
- Plotted on file -

Lot 3 Blk 20 Second Addy Rht.
for S.A. Macdonald.

Line for fence between lots 2+3

July 7th 1931

H.C. Hall + Ray 1 1/2 hrs.

Meas W along curb (no CW) on or along
H Blk. 20
- 30.00 \pm between Baird st curbs
- 1.3 edge of " " C.W.
0.0 \pm Blk 20
60.1 about line of garage fence
on lot 1
(eaves project about 1 ft. W.)

120.16 Take \pm Lot 3

this is .5' \pm near face curb turn-in
+ 2.77' \pm by joint bet. old + new
curbs.

120.16
+ 2
60.08
6360.56

180.24

179.8 joint in curb

239.7 line of fence

240.32

360.5 to \pm Oneida (by 30' \pm of \pm bet. curbs)

361.54 Cement walk on Oneida

Meas. W. along edge of CW along \pm Blk. 20
- 30.00 \pm between curbs on Baird
- 1.52 CW. " "
0.0 Take \pm Blk 20

60.8 about line of fence (at rear) ^{60.05}

120. joint

120.10 Take \pm Lot 3

179.7 hardwood peg found + line of
joint + line of low ret. wall N ^{180.15}

239.5 line of old fence N ^{240.20}

240. joint in CW.

360.3 \pm Oneida KOC by meas 30.
 \pm of \pm bet curbs.

360.38 joint in CW

361.44 edge of CW N.

6) 360.3 (60.05 per lot
120.10

Note - Pages 57-58

We found shortage of .97 on
 \pm Allman's lot Baird + Oneida.

Posted

93 Meas. Keenan St. (north)

Sept 21st 1931 PM Same crew.

Meas. 1 along E side Keenan.

- 69.8 \pm Sec. by Rec + by own meas.

0.0 on \pm Stasca
 $\rightarrow +$ $\frac{15.1}{45.1} \left. \begin{array}{l} .062 \\ \text{curbs } 30.1'' \end{array} \right\}$ $\frac{\text{Pro-rate}}{.062}$ 30.09 \checkmark

61. joint in CW about 1/4 Stasca 60.12

118 hedge 100.17

179.19 joint 180.22

180. leave scratch

x 180.22

x 240.27

240. leave narrow 240.27

241.94 joint

360. leave narrow 360.38

361.18 N end CW at \pm Prop. \checkmark

94

$\frac{14.8}{+29.7}$
 375.9 curb at S. side Prop.

390.7 \pm N \checkmark 390.41 \checkmark

405.6 " " N "

419.34 CW " "

479.7 \pm line of fence E. 480.49

540.09 joint + line of hedge 540.57

660.59 joint + fence (crossed) 660.65

721.68 CW at S side Keap. 720.70

735.85 curb " " 750.73 \checkmark

$\frac{750.75}{765.65}$ " " " " $\frac{20.90}{16.9}$

780.8 \pm line S. face 2nd floor frame W. 780.75

779.5 \pm CW E. 840.81

898.88 joint opp gap in chads etc 900.86

961.1 " " " " $\frac{11.65}{959.45}$ J.P. found 152 E of CW 960.91

899.5 \pm J.P. found 113 E of CW. 900.86

1021.0 joint opp fence + narrow. 1020.97

1078.38 " " " " 1081.02

1078.7 line " " "

1139.8 line of sheds etc 1141.07

38.86 joint. CW

1191.91 CW at Park^{S.}

- .79

1191.12 on ~~£~~ a st. on page 83 1191.12 ✓

1191.25 Square stakes found.

1191.12

+ 69.80 to Sec line

1260.92 total meas.

1259.8 Rec

1259.8 / 1.12 surp. (.000889 surp per'

= .0444 per 50'

.05334 = 60'

97

Meas. Dave tree (north)

Meas N on W side Dave

-69.8 $\frac{1}{2}$ Sec.+0.057 $\frac{1}{2}$ Sec. \rightarrow 0.0 on $\frac{1}{2}$ Sec. (by rec N of $\frac{1}{2}$ Sec.)

15.25 } curbs.

45.25 } $\frac{1}{2}$ + 30.25

60.16 S. end C.W.

120.84 joint

177.90 joint in C.W.

180. $\frac{1}{2}$ Sec

180.20

240 $\frac{1}{2}$ Sec

240.87 joint

240.25

300.16 joint

360.83 N end C.W.

375.85 curb

405.95 "

30.10

15.05

375.85

390.90

30.84

60.11

120.16

180.20

240.25

300.30

360.35

390.37

98

419.77 \pm C.W. W. (N edge)

420.40

480 line of fence + hedge

480.45

480.8 joint

542.69 " + line of overlapping OC.

540.50

(S face house - eaves + N face garage)

602.00 joint in C.W. about line N eaves garage

600.55

722.00 " line of C.W. W. (S. side Kempf.)

720.65

5735.6 curbs!

765.5

129.90

14.95

14.95

750.10

750.55

779.8 joint in C.W. + line C.W. W. (N side Kempf.)

750.67

760.69

840.4 " "

840.74

900.24 joint in $\frac{1}{2}$ Div.

900.79

960.74 " line of trees

960.84

1021.11 "

1020.89

1143.7 S. end Ret. wall.

1140.99

1196.55 NE ex " which we found 5.52 N

5.52

1191.03 over $\frac{1}{2}$ Park as memo.

1191.03

~~1191.03~~
1190.

1191.03
69.8
~~1260.83~~ M
1259.8 Rec
1259.8 / 1.03 amp. /
.0008176 amp per
=.04088 " per 50'
+ .049 " " 60'

60.05
50

1120.15
91.6
1.11 for CW.

8 1/2 / 35

Meas E. along S side of Stasco P.R.
- 150. 40 - Subd^m

0.0 m W Margaret
+.04 = 4
0.4 CW.

15.90 } curbs
46.
30.10
15.05
15.90
30.95 @ paving

58.73 CW.

.04

30.05

60.06

159.2 fence w. face

361.35 CW at W side Keenan

360.13

375.8 } curbs
405.6 }

229.8
14.9
375.8

→ 390.7 @ paving

390.14

418.98 joint in CW at SE x Keenan

420.15

at point .9 N of it

540.1 fence S

540.18

540.73 joint in CW

→ 660.96 . . . SW x Tom As. (.5 N of it) 660.21

660.96
660.21
0.75

674.8 curbs on base.

704.9

- 30.1

15.05

674.80

→ 689.85 ± Paving

690.71

719.2 about line of fence N
on E side of base.

720.22

976.05

1006

- 29.95

14.97

976.05

991.02 ± Randall paving

990.29

1019.1 W face lawn ret. wall
fenced N by shrubbery. Tie in to W Oneida
about 3' N of Blk. cor.

1020.30

1257.96 W Oneida

- 1257.60 Rec.

.36 ramp ÷ (1257.6 + 150 = 1407.6)

= .0002557 per "

=

Sec. line

$\frac{.0002557}{1020.22}$
 $\frac{1020.22}{710.27}$
 $\frac{710.27}{1027.33}$

How near to
 # 118.16.7

1395.8

.38 ramp

" one more on # 118.16.7
 would be 1396.2
 Error = 589.07 ÷ 6. "

" one more on # 118.16.7
 would be 1396.2
 Error = 589.07 ÷ 6. "

" one more on # 118.16.7
 would be 1396.2
 Error = 589.07 ÷ 6. "

" one more on # 118.16.7
 would be 1396.2
 Error = 589.07 ÷ 6. "

" one more on # 118.16.7
 would be 1396.2
 Error = 589.07 ÷ 6. "

" one more on # 118.16.7
 would be 1396.2
 Error = 589.07 ÷ 6. "

" one more on # 118.16.7
 would be 1396.2
 Error = 589.07 ÷ 6. "

Meas. E. along N. side of Prospect Ave.

- 150. W Sub Dry

P.R.

.044

0.0 over W Marg. (taken rec. E of 1/8 line)

+ .044 W "

30.5 ± bet. curbs (new)

30.05

58.25 CW.

60.02

135.5 line bet. sheds N.

from 0.0
360.10

361.18 CW. W. side Keenaw

360.15

390.16

390.2 ± bet. curbs

420.17

419.18 CW. E side " .3' Sq

539.8 joint

540.20

540.8 ± fence N

660.24

661.02 joint in CW .8' Sq — at NW x Down

689.97 ± paving

690.24

718.05 CW E side Down

720.25

960.8 ± " (at S end of it) W side Randall

960.32

989.77 ± Paving

990.33

1019.8 CW.

1020.34

1260.77 " at Oneida

1259.91 to our line.

1259.5 Rec

.41 ramp in 1409.5 =

.0291 per 100'

∴ depth of
120' lot is

120.03

width

60.05

Observations on the new paving.

In meas. along Stasca:

± Paving on Marg.	= .9'	E of Pro-rate
" " " Keenan	= .56'	E. " "
" " " Dorr	= .36	W " "
" " " Randall	= .73	E " "

$$991.02 - 30.95 = 960.07 \text{ or } .07 \text{ surp.}$$

bet. ± Marg. pav. + Randall pav.

In meas. along Prospect:

± Paving on Marg.	= .45'	E. of P.R.
" " " Keenan	= .04'	E " "
" " " Dorr	= .27'	W " "
" " " Randall	= .56'	W " "

$$989.77 - 30.5 = 959.27 \text{ or } .73 \text{ short}$$

bet ± Marg. pav. + ± Randall pav.

Note in Yankee Survey (Lot 2 Blk 7) Keenan's Addn.

We prorated thru entire subd. N+S bet

for W-Margaret merely came East record.

This would make Yankee's street line

.04' W of Pro-rate as used
on this survey.Sept 22nd 131 4 Halls AM 2 day
Put in Survey.Dill holes on line 2' E of Dorr (Run from P.R.
on N side Prospect + S side Stasca).and on intersect of lines thru Blk (E+10) from
P.R. on Keenan + on Dorr.

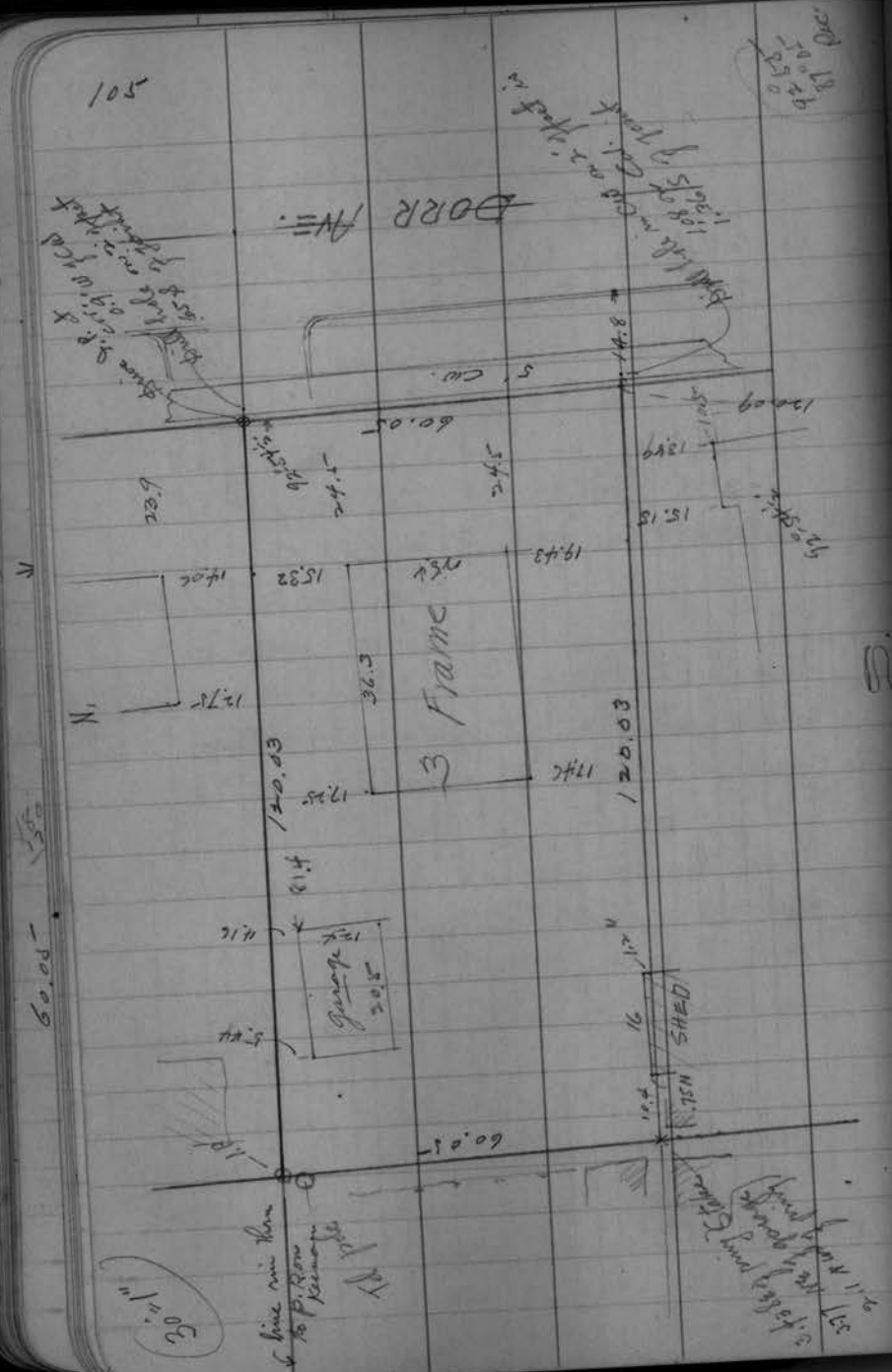
Run S to W from point 2' E of NE cor of lot.

(Sighting on sta. 240.27 Keenan)

$$\odot 92^{\circ} 54' \frac{1}{2} \quad \odot 185^{\circ} 48' \frac{1}{2} \quad \checkmark$$

(Dorr gives $92^{\circ} 58'$ in Horiz. Sub.)Drive D, Pat NW cor and stake at SW x + P.P. at NE x
(Workmen ready to put up fence + intend to set
corner fence posts in concrete).These houses were all built square with
Dorr Ave. Hence mixup.

See sketch on next page. for detail.



5000
-2500
2500

30" = 1"

I live with them
to P. Room
Kaman

I take my ...

Light in Balke 9 in St. Albans addition.

Oct 15th '21 (for Swenberg)

See w Mason. (Ray + Keith 1/2 hrs)

- 1.4 = 60 sq frame.

0.0 = 30 sq of set. curbs.

58.8 joint at apparent line both
sides Mason

121.2 joint in E drive

179.9 joint + hedge

241.7 " fence.

300. about line of fence w + hedge &

360.3 joint + N line ret wall

420.9 joint - apparent line

471.6 Ret wall.

476.5 " in E drive - roof paved

483 Eaves ± on #651

541.65⁺ joint

659.8 joint + fence

720. Rec. + S line flat on E side.

60.2

37 1/2 across point here ±

43.6
21.8

26.5
21.6
4.9

450
420.9
59.1

659.8
450
209.8

Blk 9 continued

Line between 15 + 16 (for Lowell Bell - on 16)

Note - Plat on record is incomplete + has Certificate, Title etc torn off.

It is not plain whether lot lines are at st. with RR + Mason st.

Figures on Alban indicate more than 90° S to W.

No width given for Mason St. except on diagonal, which is evidently in error.

Rec. on Alban from S x Blk 10

199.5 *
 68.7
 268.2 *
 336.9 *
 68.7
 405.6 *
 474.3 *
 68.7
 543.0 *
 611.7 *

from Abstract $\frac{46}{568}$

Excepting + reserving to all occ. of 15

the right of access to the well now situated on

the premises hereby conveyed

of herein also grants to sd. grantees a st. d way as an alley or driveway

upon + over a strip of land on the west side of sd. lot 15 the length of the premises hereby conveyed to be comm

May 31st 1932

Ray, Keith + Marshall 8 to 12. fair to 80°

Check SW along \perp Thayer from fence line bet. 1 + 2 Blk 8.

one or two hedge rows - only occupation they check OK.

360 rat temp pt for \perp Pearl St.

Run W Mason to \perp Alban (on 3' offset)

by 30 - 3 from \perp between new curbs. = \perp paving

Intersect said 3' lines on concrete walk

4.53' Nly from S end CW and

.91 E of \perp joint + 75.81 SW of sta 720

Turn L 29° 03' - 58° 06'

(Rec plat calc. 28° - 49')

Rt = NWly from 3' line at sta 720 on Mason = \perp lot 18

* 42.1 = 3' line on Alban

- 6.43
 35.67 - (rec. is 36.9)

✓

Blk 9. St. Alban's Add'

continued

* Thence meas N. along 3' line on Alban St.

63.3	about line fence E	Rec.
64.2	" S eaves garage	68.7
		68.7
		<u>137.4</u>
132 $\frac{1}{2}$ \pm	" of fence	18.7
208 $\frac{1}{2}$ \pm	" between sheds	<u>206.1</u>
271	line of low (crooked) fence	274.8
272.06	joint	

274.8 = Rec. $\left\{ \begin{array}{l} 2.18 \text{ S. of joint} \\ 1.08 \text{ W of edge cw.} \end{array} \right.$

Now set transit at sta 480 on Mason (page 108)
& turn \angle SW of 3' line.

90° = our sta 274.8 on Alban r

Meas SE toward transit

0.0 = sta 274.8

(3.43) at line

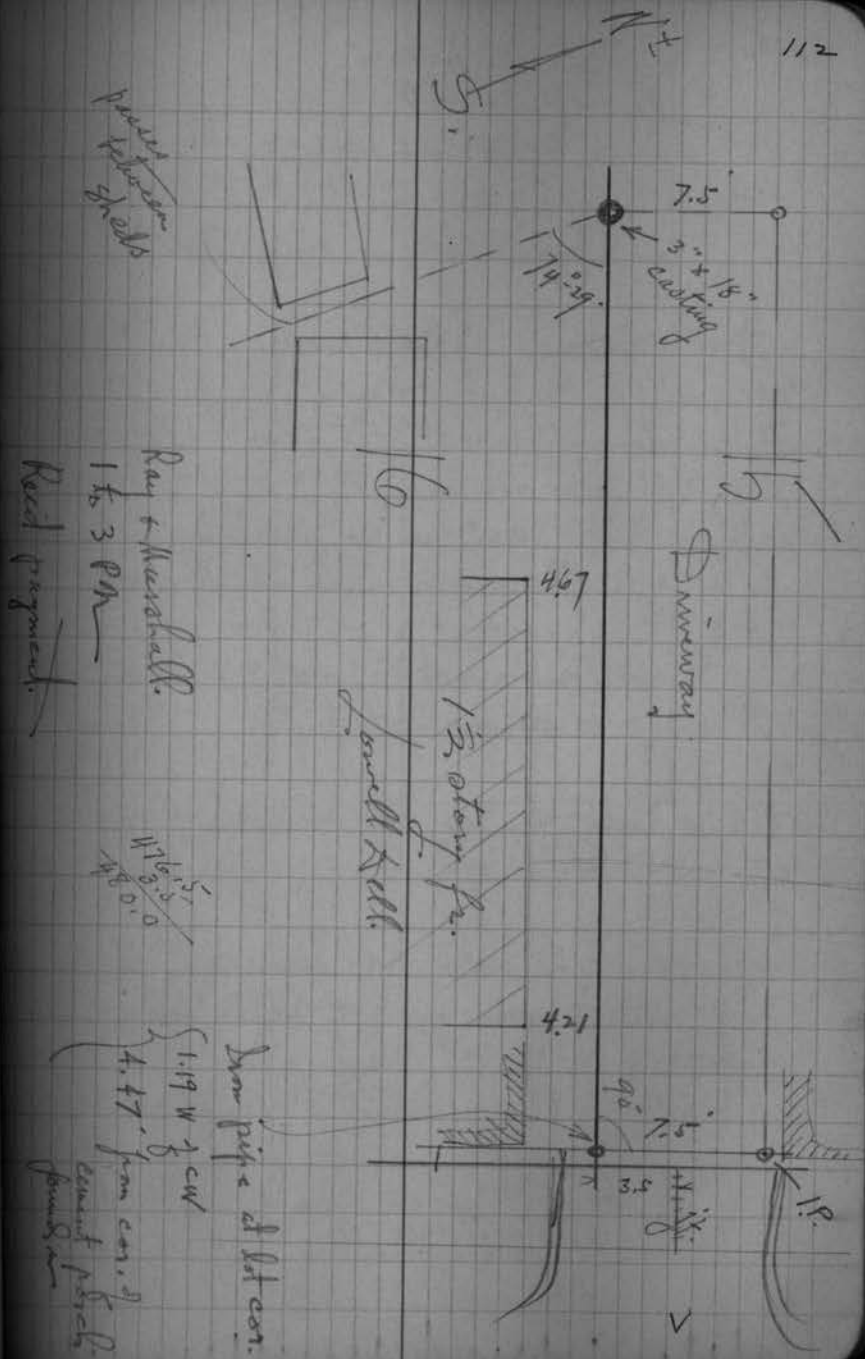
87.98 = mid pt. of lot 16

100. drive temp. oppk.

175.54 transit

175.54
- 6.43
<u>169.11</u>
+ 84.55
+ 3.43
<u>Sta 274.8</u>
100.
<u>12' N 2</u>

(Rec = 169)



113

Pelican Addⁿ.
7-36-9Survey of Lots 2-3-4 in Block 5. Pel. Addⁿ
for Hilgeman Est.August 18th 1932 2½ hrs. P.M.

H. Hall, Ray, Marshall & Keith

Uncover Davis Stone #3 (5' 8" cor. H 7)
4" below surface. 70.23' from car axle (D.S.)Check over \$ Itasca as run previously
and meas. Sky from do along E side Margaret
69.8 (on same \angle as $\frac{1}{8}$ line.)
This comes .4' N. of \$ wide pt.70.23 - 49.8 = 69.8 = meas on $\frac{1}{8}$ line.Unable to sight thru or Sec. line @ poles.
offset .4' S } " "(Line in some iron rods in Jarvis H
- setting same .4' N. of sight line)Turn off \angle (Rec) $88^{\circ}14'$ E to S. & strike plane or high pole." " " - $86^{\circ}23'$ thru opening & run Sky pole.
 $= 51'$

114

7-36-9
continued

Meas. Sky on said random (from stone #3)

50.2 notch in fence boards (3) $\frac{16.1}{1.72}$

105.44 temp spike (3)

169.44 " " near C.W. Th. W at $90^{\circ}54'$
Spike about 1.3' N of C.W.
= 169.53' from $\frac{1}{8}$ cor.200.48 \angle paving (\angle bet. curbs on Scala St.)309.94 " " near river bank. Th. W at $90^{\circ}10.00'$ = 310.1' from $\frac{1}{8}$ cor.Make temp notch on record line (as connected)
for W Subdy (near SW cor lot 4)
.91' W. of joint (30' ft. W. of drive-in)
$$\begin{array}{r} 200.48 \\ - 30.48 \\ \hline 170.00 \end{array}$$

.28 more than rec. to as defined by paving.

7-36-9
16 1/4

continued -
August 20th 1932 fair 80°
H.C. Ray, Marshall.
(Keith + canoe AM)

continue line as connected S. of tree + Hi-line pole

310.10 Hub (Spk.) at top of st. bank Pel. R.

+ 30.55 = (+ 36.47' on slope 33°06')

340.6 Pel. R. (Cos. 8377)

+ 100.

440.6 S. bank river.

+ 37.1

477.7 Hub.

+ 150.

627.7 across bayou

+ 167.

794.7 across slough holes.

E. N. 80° (Fisher) 244.1'
H. line (Dons) 26.0'
504.1'
244.1'
26.0'
530.1'

1232.2. hub (just for moon)
(Search 30' S for 1/2 cor. find nothing).

Observe Sun

① 4:02.1 PM. St. time
vert. = 29°29.5' hor. = 75°45'
= ϕ 1°06' - 10° W. random

② 4:09.1 PM. v. 28°16' hor. 77°09.5'
= ϕ 1°07' - 30° W. random

long = 89°24.9" W.
Lat = 45°37.1" =

1307 fall 24.9' E. of a pipe + stake
marks "Road" on N + W sides

1731.8 hub (line) (bas. ϕ 3° E on 0° var. mag.)
I.P. for road from SW about 11'

Observe Sun

③ 4:34.1 PM vert. = 23°54'
hor. = 82°04'
= ϕ 1°05' - 19° W.

Average of 3 results + 0°07' = ϕ 1°13' - 49" W.

1936 1/2 ϕ Road E.

2528.5 fall 5.5' E. of Dons 1/8 E of Center
(as marked by an iron pipe)

.00218

= Tang. 0°07' 1/2 to correct W.

(Are) Dons dist on H. line gives away ✓
+ Fisher on E

7-36-9

Pelham Addⁿ
continuedW OcalaAug. 22nd 1932

He! Ray Marshall

Mess. St. along CW on E. side Dorr Ave.

- .5' N end CW.

0.0 Our $\frac{1}{2}$ Starca as run.

69.8 = Sec line

1.33' N. of joint bet. wide &
narrow walks.

+ 170.2 (Rec.) to W Ocala St.

+ make temp mark.

{ 1.11 N. of joint

{ 30.1 N of $\frac{1}{2}$ new concrete par.Try W Ocala St by above point on Dorr St.
and by 60' N. of NE x Brick Brewery.

(2' offset S)

Line falls:

.79' N. of joint at NE x Keenan

.97' N. of CW - NE x Margaret

.84' on CW - NW x "

(at .8' W. of CW)

.12' S of SE x } old fr. warehouse

.16' S of SW x } in lot 4

.90' S. from opt at 169.53 from stn

59.88 \pm N of NW x Brewery

Take W Ocala .23 N at W Subst. = Rec.

" " " as run at Dorr Ave = "

(Measures 170.2' along W Margaret from

Sec line as staked for E. J. Jarvis
(with iron rods.)Mess. W along approx st. line from one corner of
 $\frac{1}{8}$ sec. line (-37' W of sta 169.53)107.25 = $\frac{1}{2}$ ^{Arbutus} ~~margin~~ as taken 30' E of curbs.

107.3 to E edge CW.

137.25 to $\frac{1}{2}$ between curbs.Re-run W Margaret St. as located in
Ed Yankee survey.by 1.61' on CW. at $\frac{1}{2}$ Starca+ 1.42 " " " $\frac{1}{2}$ lot lot 2 Blk 7 Keenan
(Yankees $\frac{1}{2}$) AddⁿIntersection of true W Marg. + W Ocala
falls on old cement CW.

.66' S of E edge

.30' W of CW north

Drive Iron Pipe thru old cement (rotten)

7-36-9
Pelican Addⁿ

Drive Iron Pipe at 170.2 on corrected 4th Subd 2
 { 27.76' W. of Sox warehouse.
 .6 N of CW.
 Drill a hole in CW 1.00' S. of cor.
 + on line

Line out corrected 1/2 line by connecting
 .68 W at 310.1
 .23 W. 105.4 Page 114
 1.72 W at 58.2 + Drive Pipe (NW x lot 4)

Line falls 14.85 E of NE cor brick Hilgertman res.
 5.5 - S Concrete cellarway
 19.64 E of NE cor cement water table
 by concrete block ledge
 S side Ocala

S⁹² (of 14' W) on true 1/2 line from
 SW cor Blk 5 Pel. Addⁿ

60. { start to dig to plant more.
 Soil too dry + rocky.
 Find old beat over iron rod below
 rod. OK for line meas.
 Drive I.P. alongside 73' S of CW

+ 77.8
 139.8 Drive an I.P. for line at top
 of bank.

Measure Wly on 4th Ocala from 4th Marg.
 (True Release Pt)

153.65 to 4th Subdⁿ
 153.5 = res.
 .15 surp. = .096 per. 100
 .078 = 58'

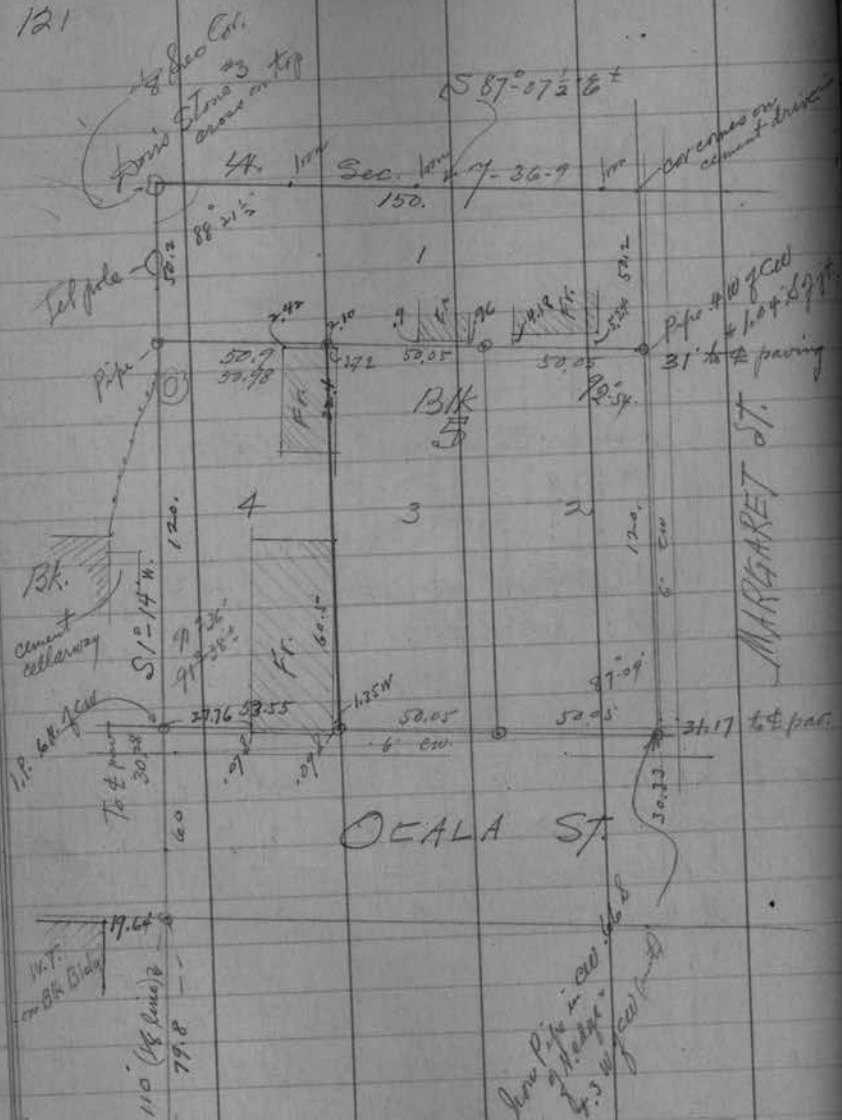
Produce 4th Ocala Wly (short sight)
 + fall 2.3' ± N. of CW. at N. Marger.

After setting Pipe at SE cor lot 1 Blk 5
 turn < 92°-54' S to CW + check OK with Sox
 Meas. Wly on line 50.05 + 50.05 + 50.9 to

Since rec for this line is 50 + 50 + 51.3
 + we get more than rec on Blk 5
 Calc. on rec. length 4 + 4 Blk 5 +
 find 4 lot 4 should have read 51.⁰³
 (on plat)

Unable to get 92°-55' at NE cor lot 2
 best I can get 92°-54' altho I have taken
 Margaret St. as straight line.

→ Sec. line obstructed by poles in Blk. 5
 + by bldgs in lots E. of Margaret



Ocala St

MARGARET ST

Note - old CW on E Blk 5
 cracked & rotten
 - Drive pipes @ Lots 2 & 3
 thru pavement.

PEL R.

Measurements in Blk 1 Olson + Frigo Addn
to Rhineland
for City of Rhineland.

N.B. This sub^d was laid out by E. S. Shepard
in 1889 + rec. by him as Reg. of Deeds.

Not very definite - no angles given + $\frac{1}{4}$
said to run N 6° E or var 6° E
+ is drawn to imply that the angle
at $\frac{1}{4}$ (W to N) is greater than 70° .

Does not state positively that $\frac{1}{4}$ sub^d
is the Sec. line.

Doris plat of Townsite of Pelican 1891
is scarcely better as regards information

Doris notes of a survey 1898 give dist. N from
 $\frac{1}{4}$ cor as 658.5 to $\frac{1}{4}$ switch track
but can not be sure this distance was
measured on corrected line.

He also mentions some 2 $\frac{1}{2}$ " gas pipes
which we fail to find.

Oct 21st 1932 (1 $\frac{1}{2}$ hrs in PM)
Ray + Marshall

Meas. $\frac{1}{4}$ along CW on Monica
from point 1' inside CW on NE ex Mason
150 + 29' Then S 30° comes on
new face about 2' N of S edge do
10' S find old part hole of
some sort.

(Since Don + Shepard are apparently
10' apart on Sec line - we conclude
this hole may be $\frac{1}{4}$.)

Meas. N from do along line of poles.

583.4' swing 6° E to a RR iron (mon)
660 (on line of poles) $\frac{1}{4}$ switch track.

By swinging $2\frac{1}{2}^{\circ}$ W at RR we get Doris
meas of 658.5 to switch track.

Continue N by to 1020' but fail to see
any gas pipes at " or 1030.

Check $\frac{1}{4}$ from fences lots 2 + 3 on
near or Olson St.

Indicates Shepard's $\frac{1}{4}$ was under
pavement.

125

Olson + Fays Add^sOct 25th '32

H.C. Ray + Marsh. 2 hrs

Dig for stakes along Olson St.

Found nothing

Shown an iron bolt in line with lot
fence in Blk 14 - towards Pal.Do not know if it means
Olson St or Int.

About line lots 1+2 Blk 10?

Abendish thinks he can get old Soo
map to aid us. Fails.November 1st 1932

30°

H.C. Ray + Marshall.

Use city's R.R. detail map + from that =

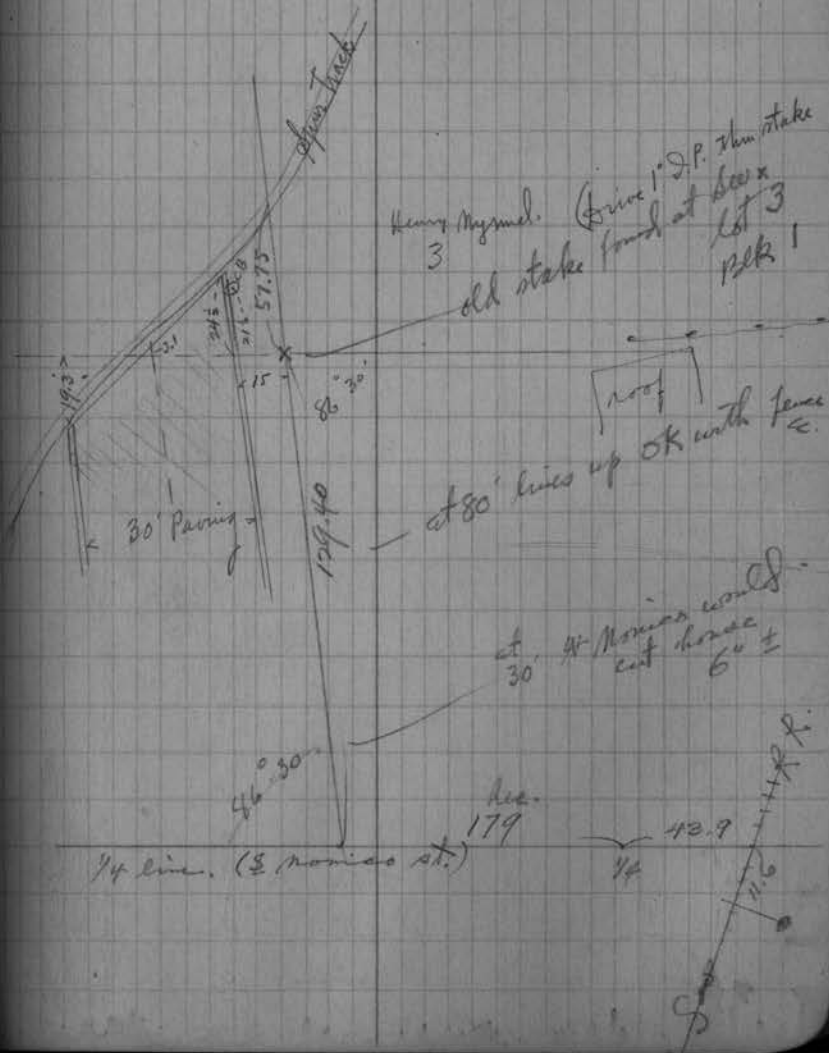
Set A in @ Soo main line 11.6° Nly
of Switch Head flock, then
to SW to W 64° 32' from Soo L.R.Run Wly on what should be true $\frac{1}{4}$ line
in Sec 31 - according to this R.R. map
which seems to be carefully prepared.

126

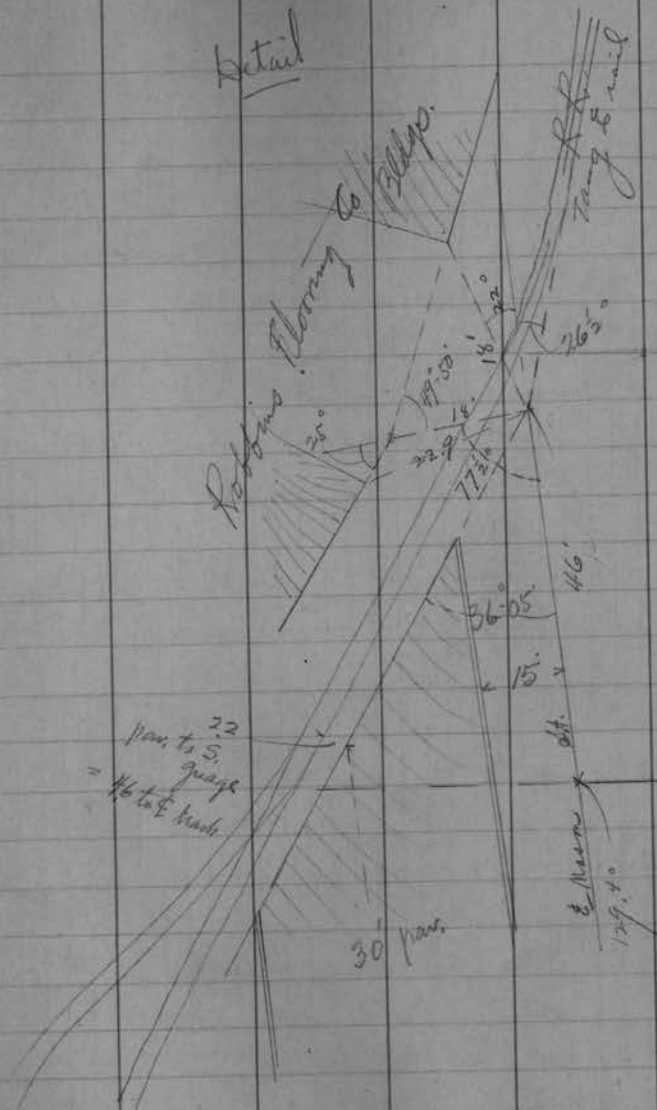
At 43.9

 $\frac{1}{4}$ cor' under pass.

(very near our previous mark) ✓



Detail



Made scaled map 20' to the inch
 Delivered to Wardwell (City Manager)
 $\frac{1}{2}$ of par. opposite Mymel bridge = 207 sq ft = 23 yds
 or 27 5/10% of a full 50' share

Survey of N160' of out lot 1 in Bk L
for L. M. Cohen

June 7th 1933 Ray Keith Marshall 8:45 AM

Meas. E on \$ keep. from W Marg
61 = joint

360.66 E joint opp joint at SW² Keenans ³⁶⁰

374.85 W curb

404.75 E "

418.62 CW at E end Keenans ⁴²⁰
at cor Qd.

539.2 Approx line occ. N. ⁵⁴⁰

660.77 CW at SW² Drive ⁶⁶⁰
cor of cw.

674.82 W curb } Down

704.87 E

718.12 E cw. at joint. ⁷²⁰

834.71 E joint in driveway + ⁸⁴⁰
about occ N. side.

961.22 joint (1/2 N) cw. at SW² Randall ⁹⁶⁰

974.43 W curb "

1004.46 E "

1019.79 E cw. at pt. 1/2 S. of end cw. ¹⁰²⁰

1139 = line of fence N. ¹¹⁴⁰

1140.61 W. end of CW. ¹¹⁴⁰

1141.5 fence S (wire)

1261.60 = inside cor CW. at SW² Granda
1.58

1261.02 = line line Granda cor same

page 92

1261.00 Rec ✓

Rec.

60

150

210

150

360

60 Keenans

420

220

540

120

660

60 Drive

720

120

840

120

960

160 Randall

1020

120

1140

121

1261

131

4th Margaret St by set up over our
 drill hole (from 2' E of 4th Marg. + on 4th
 Keenans Addr.)
 Sight S to our 2' point at SW x Kemp
 (1.39' E of point.)

→ We found S to E Marg + Park St.
 to E 87° 05' 1/2
 + 0° 02' 40" } for fraction dist in
 ∴ Turn L 87° 20' 8" } Keenans Addr.
 S to E + put marks on roller rink +
 on Cohen Fence.

Note - We are taking S Park St. 4' N.
 of a straight line at Keenans

Run S Park St (4th Keenans Addr.)
 on 4' offset by 4' N of Jim Bolt at NW x do
 r by $\frac{4.44}{-.79}$
 $\frac{3.65}{}$ N of CW at SE x Park + Keenans

This checks OK with 4' N of drill hole at Marg.
 Put temp stakes on line near N E x out lot!

4th Keenans

132

Run 4th Keenans by
 Sta. 360.00 on Kemp
 + " 360.13 on Stasas (P. 100)

OK with Sta. 360.15 on Projects (P. 102)
 line falls

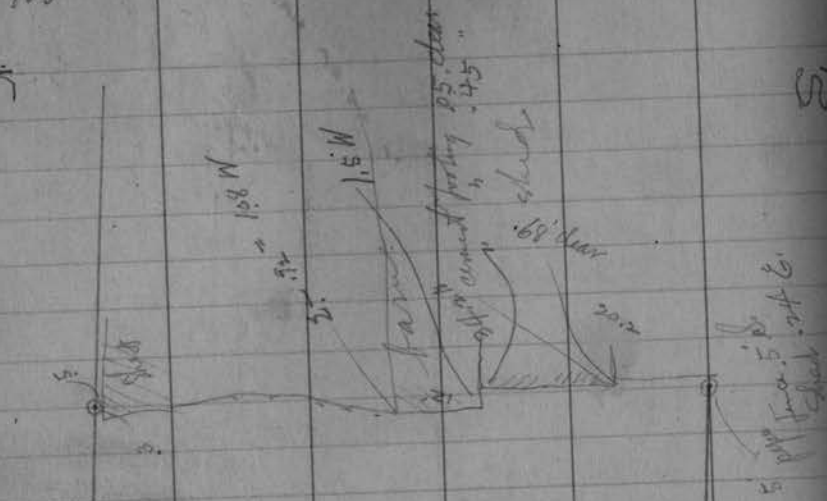
^{10.73 - 2}
 8.73 E of box cement W.T. front
 of 2nd frame store
 bet NW x Kemp.
 .72 W of CW at joint near E Park St.
 (" bet. old + new CW.)

Meas W by from 4th Keenans to 4th
 Marg. along Park.

360.00
 therefore put in 3' Pipe for NW x
 out lot.

June 10th set up on 2' line on W side Marg.
 4' N. of our drill hole from S Park. Av.
 Turn angle N to E 92° 52' (once only)
 Fall .01' N of our pipe at NW x outlot 1
 " .09± " " " " " " " " NW x do

X



to 160' outlet
 Blk 1.
 Keenons' Abide

56' 19 80'
 78' 100' 80' 100'
 150.00

MARGARET ST.
 line 2 E 1/4 Margaret St.
 100'

S

135

Aug. 23-1937 For Walter Kaye

HCH & K. Hall

Lot 5 - Bk. 25 - 2d Add.

Line up 15' E. of W. Bdy. of Baird Ave.

Measure Westward 375'

Prospect 59.97 each lot

∠ N W Cor. Lot 5 = 89°-58' Intersect

∠ N E " " " 90°-02' "

NW Cor Drill Hole 1' N. of Pipe

NE " " " 1' N. " "

SW " Iron Pipe 1.4' E. of Garage Lines

SE " 2 Iron Pipes W. x N. of Old Fence Post

Corner in center of Post

136

Surrey St

Lot 7 & South 20' of Lot 8 in
Blk 3 B.L. Harris' Addn to Rhineland
for Ernie Shannonby — ~~Bostrom~~This 80' property to be divided into 2
equal parcels fronting on Randall Av.

April 3rd '39 Erecast +32° Ray + Keith
Run $\frac{1}{2}$ Stasca (.06 N. of Record from Sec Line)
by 73.86 N of " Cor
+ by .82' S of pt. at SW x Don (4' post)
+ by .44' S of CW - SE x "

Line falls: 0
.33' S of ret. wall at SE x Randall (3.67-4)
.26' S of pt " " } 1 1/2' W of Ret. wall
6.23' S of end SW " " }
.63' S of pt at Oneida
.20' S of P.P. " " (3.60)
(" found .14' W of W Oneida)
1.2' W of CW
Run $\frac{1}{2}$ Randall by 1.16' E of Ret. wall SE x Stasca
+ by .54' E of CW at SE x Prospect

This proves erroneous since it should have
been .54' E of NS x .
∠ W to N at SE x Stasca 87°-06' 174°-10'
(When re-run we fell .07' E at SE x Prospect.)

Mrs. Shannon's

* Run $\$$ Prospect by .80 S of CW at SE x Keenan
 by .48 S of CW at SW x Don
 .96 S of N end CW SE x Randall (2' on walk)
 1.74 S of jt at SW x Onida
 .43 S of I.P. found - " *See adjustment*
 S to W at SE x Randall. $92^{\circ}56'$ $185^{\circ}58'$
 $92^{\circ}56\frac{1}{2}'$

Meas N along W. side Onida.

0.0 our adjusted $\$$ Stasca

240.33 I.P.
 360.01 our $\$$ Prospect*
 360.46 = opposite Iron Pipe

Not so good
 we always
 found old maps
 N+S in lot

Meas. W. along $\$$ Prospect from
 W Onida.

-.86 CW.

0.0 W Onida as run 1931

119.93 W. end CW

239.31 our $\$$ Randall as run *Revised 239.38*

Meas W on 4th Stasca from W Onida

238.08 our $\$$ Randall as run.

Meas. N along $\$$ Randall (on 3' marks)
 0.0 our $\$$ Stasca (7316 N of Sec. Cor.)
 59.8 S. end CW.
 60.06 P.R. = 4th "
 120.12 " = $\$$ Lot 7
 120.76 joint + line of hedge Ely
 160.16 P.R. = 4th of S 40' Lot 7
 200.20 " " 4th " S 20' " 8
 241.41 jt + N. end coping
 360.18 our $\$$ Prospect as run.
 360.37 P.R. for $\$$ = v

Apr. 4th 40° overcast R+K.
 Re-meas. the above - same result +
 continue Nly

360.20 our marks at Prospect
 722.68 N. end joint CW at Kemp (1 $\frac{1}{2}$ ' on CW)
 1191.22 our $\$$ Park St as run
 1192.55 the joint

Do by .79 S of CW at SE x Keenan
 + by 5.52 S of cor. ret. wall at SW x Don

Mark $\$$ Park St at E side Randall
 1.33 S of joint (4th jt north of steps.)

Pro. rate on this in accord with former work.

139 Mrs. Shannon

1191.22
1190 Rec

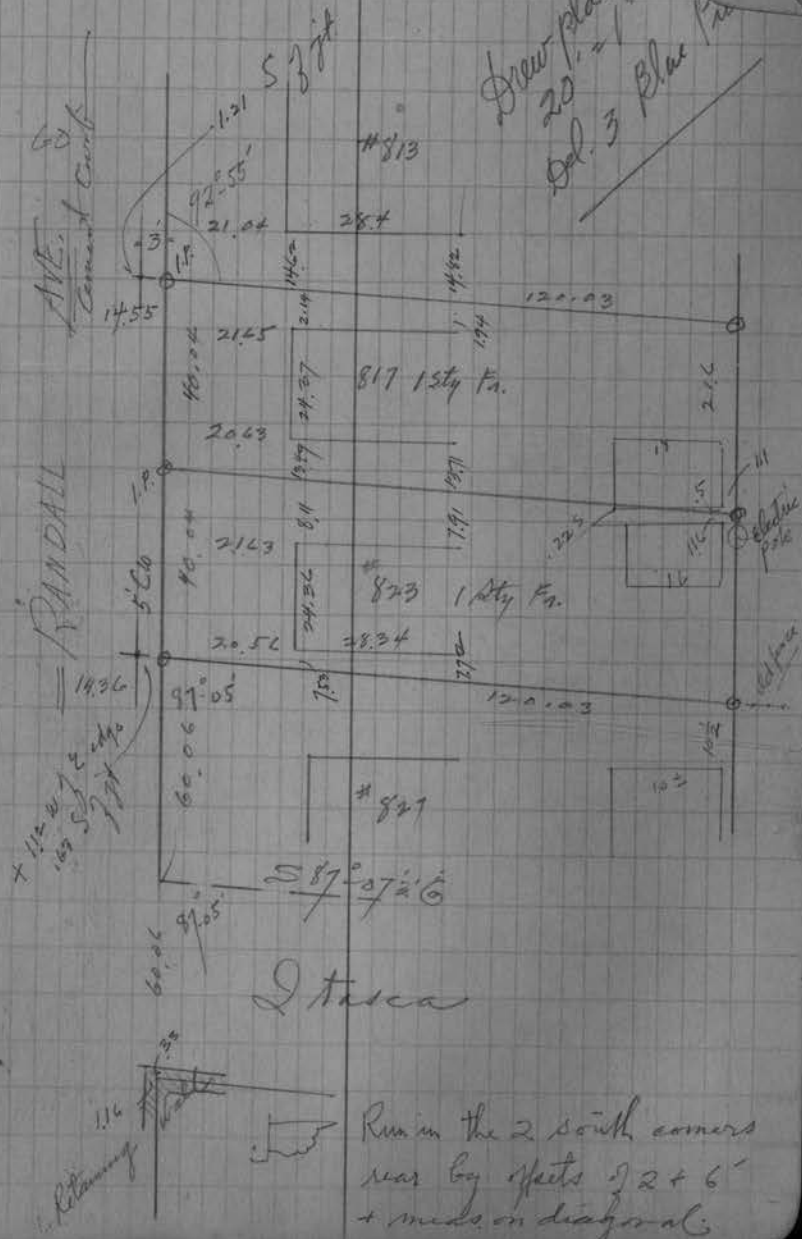
1.22 ÷ 1190 = .001025 \times 120 = .12
 \times 60 = .06
 \times 360 = .37

(circled) surp. per ft.

Adjusted \pm Prospect falls
 .79 S. of CO at N. end CO at \pm Randall
 (at pt 2' W. of inside edge)
 Re-run \pm Randall by .57 \pm E of CO at
 NE Prospect.
 as a falls .07 E of primer line.

Put in survey on this basis using our
 Pro-rata points on 3' spot line &
 Measure in 120.03 \pm 3. for rear
 corners. \angle E to S $89^{\circ}05'$

Since we found Sec line to bear
 $S 87^{\circ}07'2'' E$ \therefore line of Randall trs.
 $N 0^{\circ}02' W$



$$\begin{array}{r} 32.05 \\ 16.27 \\ 30.17 \\ \hline 13.73 \end{array}$$

$$\begin{array}{r} 57.05 \\ 11.1 \\ \hline 58.05 \end{array}$$

$$E'4 = 1.63 \text{ ch } W \text{ of } \# \text{ Onida} = 107.58$$

$$SE_x = .17 \frac{1}{2} \quad (11.55)$$

$$\begin{array}{r} 11.65 \\ 2 \overline{) 119.23} \\ \underline{23.30} \\ 59.61 \pm \frac{1}{8} \end{array}$$

41.74



76
97
97
94

59.80
19.94
39.86

Sept. 3 1929

HS (figures from Mr. Washwell - City Mgr.)
 Po Bl. 1554.380
 CH. 1561.398

Hydrants - (Top of stem)
 King + Stevens (15) 53.64
 Pelham.

Dav. + " (15) 53.64

There are no official grades for city of Rhineclark
 must be governed by existing C10 + curbs + paving

STEVENS

PELHAM

RIVES



DAVENPORT

	by truck	
Ray	20	87 15 1/2
Kr	7 1/2	② 174 10 3/4
M.	6	87 25 1/2