

3246  
3057  

---

189

D H Fraughton  
Scratch Book

Rhineland  
1915

---

FIELD BOOK

#2



506

---

opened March 25 1915

closed Feb 1 1916

INDEX

PAGE

(92)



(2)

1.50

SEC 1 39-10 March 25 1915  
Went to one on Dicks bank  
5938 west of Town cor on  
Stump of N B.T. ok, 3 BT dam on  
mound from orig. passage

Run north-onic var 3.15 E  
7520 Levee Lake  
10569 fell 15 8 1/2 S of cor cent Post  
Went East + set me at 7520

D&C 1.50 change course 57'  
W Bush 6 N 85 W 46  
" " 85 69 W 57 1/2

Soat notes say it is 2072 to cor in  
oaks + 4923 from corner on lake to W.M.C  
and 2275 between. measure  
any distance across lake is 7520 on  
adhesion of 525. Proportions ok  
and set NE cor on ic 2227 1/2 W  
of me.

South from NW cor on ic  
1450 over Lake.

8380 fell 129 west of cor  
D&C 2732 change course 1.30  
Went N + set me on high bank  
at 14.44 S of cor on ice  
Y Pin 10 N 88 W 90  
Y oak 6 N 54 W 32

10569  
10570  
10571  
10572  
10573  
10574

found an overline between corner and  
overline. (3)  
Corrected line. South  
1/4 Post at 4683 } WP. 141 } S E 46 1/4  
" " " " } " 24 S } 2 1/2 E 70%

East from W 1/4 P var 1° W  
3700 intersect Lake  
6550 OVER LAKE  
7864 fell 396 1/2 south of 1/4 Post  
D&C 504 change course 2.53  
course var 1° 57 East

Went west and set temp 1/8 west of  
at 1966 + 99. Under north of random  
to 1/4 Post. Set temp Post + 1/8 and  
49 1/2 south of Random

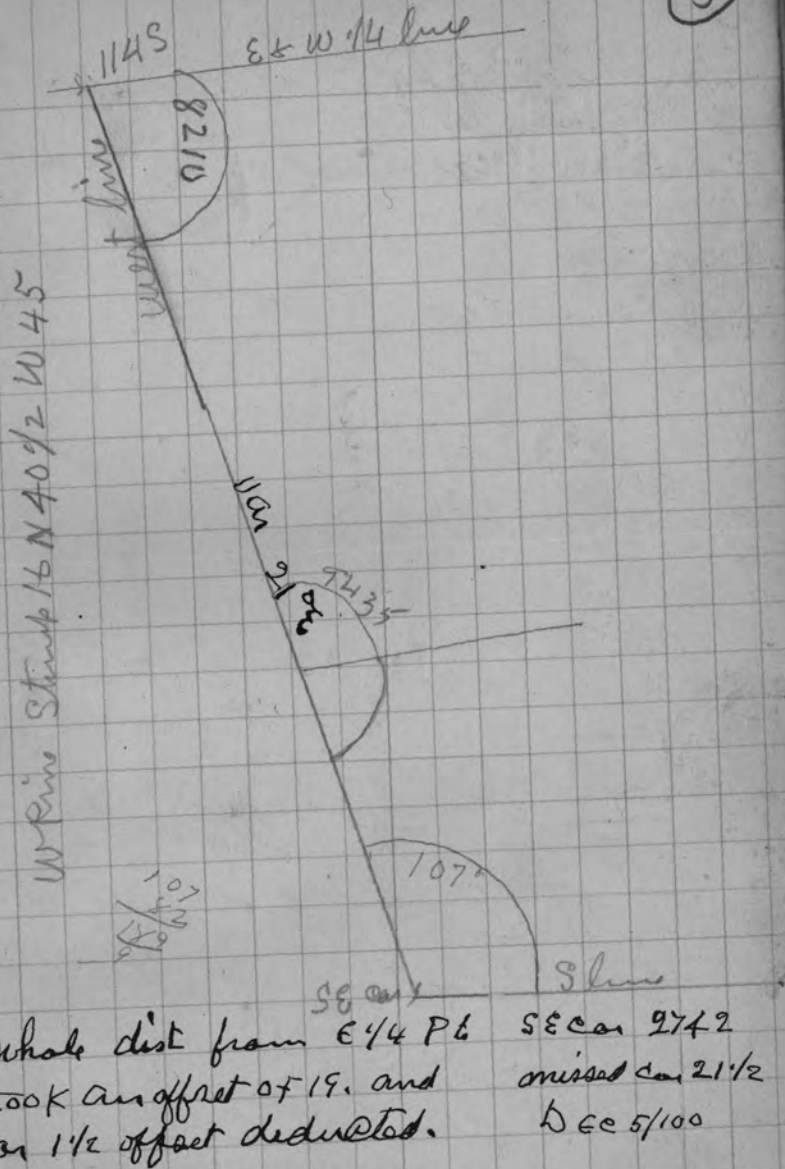
Do not know what the @ marks  
may do with the line between  
Sections 1 + 2, but think the line  
I am for John Reardon will stand  
up. Think the US Surveyor did  
run this line and set both 1/4 P  
and NW 1/4, flowage of Lake destroyed one  
and 1/4 P was burned out. One reason  
why I think is the distance to 1/4 P  
is practically correct. While this line  
run for Calumet is over 1000 ft long  
+ the 1/4 P bet 2 + 3 is directly south of  
corner. Had they an overline bet 1/4 P  
1380 E. and then run the line 2 + 3 on H 2

(4)  
 See 21.36.8 March 31 1915  
 went to W 1/4 P. See see 20 1914

Run East Van 11.45 E  
 750 S beam  
 2450 to Lake  
 6100 over Lake  
 7100 same "  
 7500 beam "  
 8240 fell 2.02 1/2  
 SEC 246 Champ occurs 1.24 = 13° 10" E

East from SW cor Van 4° E SEE July 1914  
 3600 to lake could not find ME  
 5000 over " " Van 3° E " " Van 3° E  
 6000 " " 3.45  
 7868 fell 90 1/4 north of SK  
 SEC 114 Champ beam 45°  
 Set one on E side of lake at  
 4954 E of SW cor  
 W.P. 5 N 19 E 50  
 W.P. 5 S 6 W 17 1/2

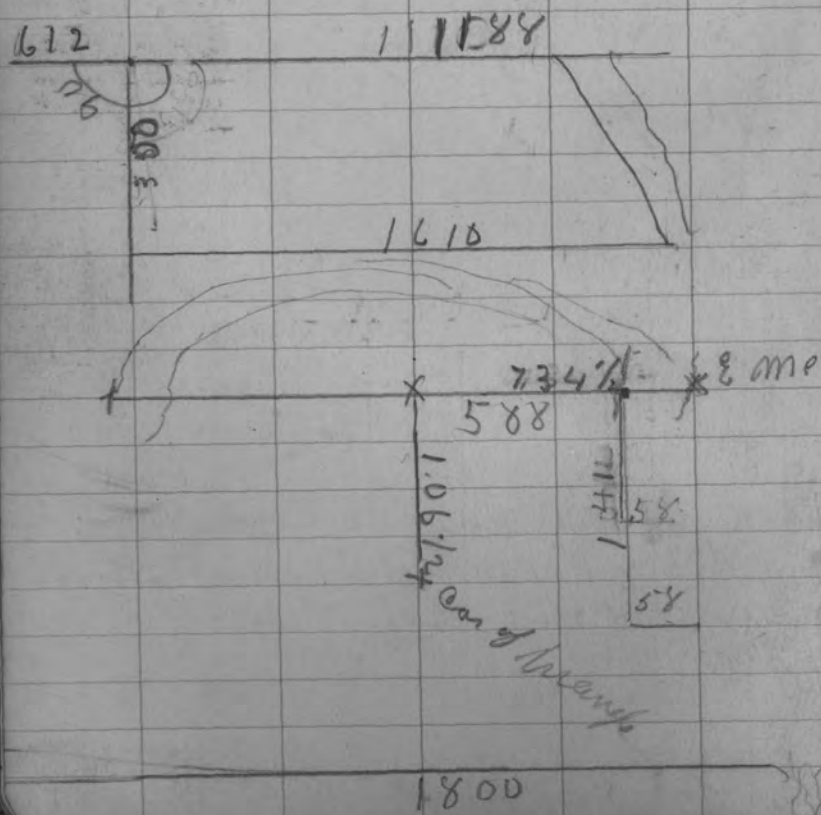
Dist. across lake is 2354  
 goat " " 2092  
 across of " " 262





(6)

Triangle	166,100
Peninsula	4,297,50
field	9,515,75
Total	15,474,25

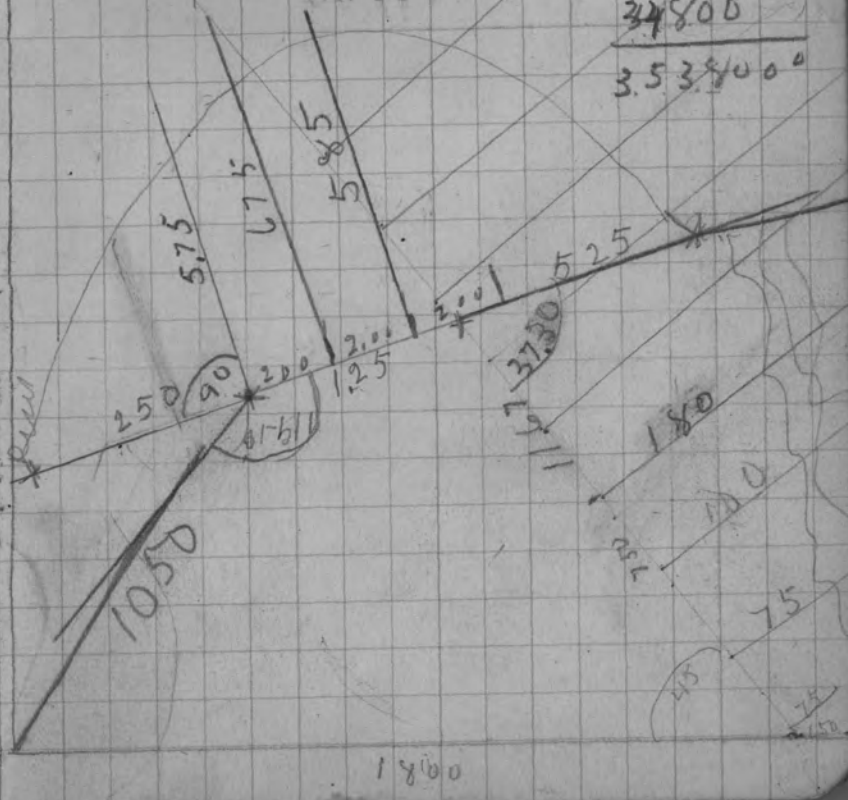


1050	1800
34	640
33500	1160
75	

1760	(7)
3480	

1160
350
58000
3480
406000

1160
325
5800
2320
3480
367000
11600
350
58066
34800
3538000



1800





## Survey of Road for

6.85

## Town of Harrison

Lincoln County Wisconsin

S E C 33. 35-8E Opie 27-1914

Went to N 1/4 P. found stump of Pine  
BT. Hemlock grubbed out Part sets in  
West wagon track of road.

Run South on Road War 230 E

2300 to Harrison Road

7764 full 206 W of cor. found SW Bnd  
head marks of found stumps of other  
trees S E C 28.4

Posted

corrected line S from N 1/4 P

2300 to center of Harrison Road

## Road for Town of Harrison

Went to 1/4 Part between 11 + 14.34 8  
found the Buck stump with marks  
+ roots of Hemlock! took night  
bearing made by same man

Buck stump 16 N 71 E 29

Run West War 3 1/2 E

4177 full 28 S of cor. Buck OK  
mark new bearing Buck 14 S 19 W 93

Hemlock 10 N 41 1/2 E 52

corrected line E + set 1/4 P.

Sugar 12 N 21 W 38

Went from corner to 10-11-14-15  
War 4 E

1350. old line 10 links South  
36 36 to Lake No MC. old line  
at 1350 was 15 Lks S. So of 3676  
it would be 40 1/3 Links. set with

set stake on shore of lake and  
corrected line East from  
corner  
from Road for Town of Harrison  
2500 across Harrison + Elm City  
Road



(14)

6817

SEC 26 348 Apr 30 1915

went to SW cor found where lines crossed E + W N + S found stakes that agreed with field notes. set Post + made new Bearings

37 Birch 24 S 65 1/2 W 20

Rim north was 4 1/2

3953 full 50 W of 1/4 P Birch ok put dead maple a stake

made new bearing

Sugar 14 S 47 E 33 3/4

went south + set 1/8 P Sugar 14 N 27 E 6 1/2  
" " 20 S 17 1/2 W 5

East from W 1/4 Post was 4 1/2

3978 full 44 1/2 N of center

went + set 1/8 P  
1989

North from S 1/4 P was 2 1/2

3920 full 68 1/2 E of center

1960 went south 1/8 P } no bearings

went from 1/8 P S of center 3 1/2

3985 full 10 S of 1/8 P

Set 116 P in center of SW 1/4

Horn 8 N 13 W 92 1/2

Sugar 14 S E 50 1/2

11125

11750

8016  
116

(15)

Survey of road for town of Hamers

S 77 W	350	1
N 75 1/2 W	375	2
N 47 W	200	3
N 3 E	600	4
N 27 W	400	5
N 22 W	500	6
N 48 W	200	7
S 87 W	400	8
N 52 W	575	9
N 14 1/2 W	350	10
N 35 1/2 W	350	11
N 69 1/2 W	350	12
N 44 W	350	13
" 10 1/2 E	325	14
" 41 1/2 E	300	15
" 35 E	500	16
S 86 1/2 W	325	17
N 32 W	800	18
" 57 1/2 W	675	19
" 26 W	700	20
" 5 E	450	21
" 40 W	750	22
" 29 W	200	23
" 10 1/2 W	1425	24
" 62 W	275	25
	11725	

8016	9300	116
8016		
12840		
8016		
48096	48240	
85176	48096	
929856	1440	
573		
93		
1719		
5157		
8016	53289	166
	48096	
	5193	556
116		
75		
580		
812		
8700		

11725

South	89 <sup>00</sup>	W	500	26
"	88	W	275	27
North	56	W	400	28
"	45 1/2	W	300	29
"	49	W	1025	30
"	35	W	425	31
"	9	E	425	32
"	24 1/2	W	800	33
"	7	W	300	34
"	20 1/2	E	400	35
"	55	E	200	36
To end of Harrison Road			50	50
Brought forward			117	25
Total			167	75

2 miles and 7.75 chains

3783  
 6000 (1.60)  
 2783  
 32170  
 22598

Survey of road for town of Harrison. April 2<sup>nd</sup> 1915  
 Commencing at the 1/8 Post South of the center of Section 26 Township 34 N.R 8 East  
 thence west on 1/8 Sec line to 1/16 Post in center of southwest quarter of said Section 26.  
 thence north on 1/8 line 15<sup>00</sup> chains to Elm City and Bass Lake road & thence nor westerly to what is known as Nemamans landing on Bass Lake and there connects with Harrison Road. ~~XXX~~ courses + distances of said road after leaving 1/8 ~~xxx~~ line should be inserted

See graph book

Baird

face of 11.2  
aw

Baird / Lincoln St

600  
300  
250

966  
75  
9588

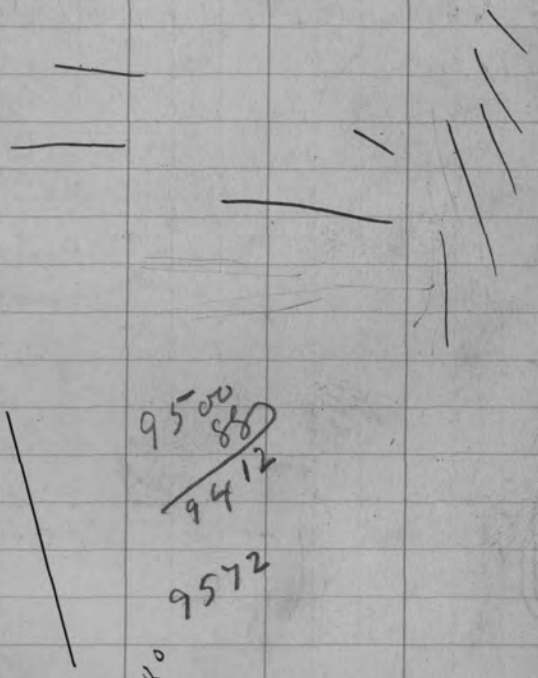
500  
485  
15

10375

95

875  
160  
484

9660  
72  
9588



9500  
880  
9412

980  
9572

acres

80 feet face 4.75

Rivers St

3783 / 6600 (175)  
3783

28170  
26481  
16890  
15182

9660  
72  
9588

Baird aw

174  
522

Park aw

9500 120 feet 124  
Rivers 1-6 Saw 72

Keenan St

Don

SEC 36-39-10-E May 12 1915  
Went to NW cor Had C. Russell with me  
This corner had been moved but we found  
the exact spot where we placed rock  
around Post in April 1901. The stumps  
of original trees were then OK.

Run East on an offset of 10 lks. along  
road for 25.00 ch  
4304 fell 77 S of 1/4 P. offset deducted.  
Set Cedar Post from stumps of  
both original trees. which are OK.  
Went west and set 1/8 Post at 2152.  
W. Pine 30 N 10 1/2 W 212 1/2  
" " 50 S 16 E 68

Went to center which I set in 1901 OK  
Run west var 3° W  
4200 fell 1 3/4 lks South of 1/8 P of 1901  
Set 1/8 P W of Center } open swamp no BTs  
north from 1/8 P W of Cent var 610° W  
4670 fell 29 W of 1/8 P.  
Corrected line South 23.35 ch  
and set Temp 1/16 Post and  
run a line west to see line  
but do not know how correct  
it may be  
finished at 5 P.M. work done  
for Rex Wunderlick Rd

97769  
1942 1/2  
26 1/2  
5  
3884 1/2

SEC 12-35-11 May 17 1915  
north from 8 1/4 P var 315 E  
Set + Log at 114 P. + cor lined between  
4016 NE cor on iron pipe OK  
Set 1/8 P in center of Right of way

West from NE cor var 1 1/2 E  
7765 NW 98 South of NW cor  
var 15 W DEE 1.235 Set W 1/8 P at 1942 1/2  
at 58 24 1/2 and 73 1/2 N of Randan  
Ham 14 N 70 1/2 E 44  
Sugar 8 S 71 1/4 W 40  
Set N 1/4 Post 3882 1/2 and 49 N of R  
Sugar 9 N 24 1/2 E 18 1/4  
Swamp 12 S 75 1/2 W 35 3/4

SEC E 1/8 P on N Line at 1942 1/2 and  
24 1/2 N of Rand } Sugar 16 S 33 E 9

Went to E 1/4 P Run west var 1/2° E  
7503 fell 3 1/2 N of 1/4 Pine etc OK  
Sugar down made new heavy  
E Sugar 20 S 29 E 49 3/4  
course of E & W 1/4 line 1/2° E  
" " W line from 1/4 P N. 7° E  
" " S " 2 1/2° W  
" " N + S 1/4 line  
Course of East line is 3 1/2 E.



(22) See 12 - Cont may 18-19-5

North from west 1/4 Var 6° E

4002 full 72 E of corner OK

West South + set 1/8 P at 2001

Cancelled Sugar 14 N 3.6 W 44

Var 7° E " 18 S 7 1/2 E 39

course of line from N 1/4 P N. is 7° E

West from S E Cor Var 1/2° E

7914 full 419 S of cor OK

Dec 529 set W 1/4 P at 58.35 1/2 and 314 1/4 N

W 1/8 S.L. { Hem 14 N 69 1/2 W 29

{ Elm 16.5 83 1/2 W 37 1/2

S 1/4 P at 39.57 and 209 1/2 N of Rand

{ Hem 10 N 42 1/2 E 10

{ Bush 18 S 63 1/2 W 47

E 1/8 P on S line at 194 1/2 + 104 3/4 N of R

{ Bush 10 N 22 1/2 W 49 1/2

{ Hem 12 S 35 E 72 1/2

North from S 1/4 P. Var 3° E Should be 3 1/2

7824 full 40 E of 1/4 P

Dec 511 change course 17'

West S + set center

{ Bush 12 S 21 1/2 E 53 1/2

==

Dist to S 1/4 P  $\frac{5}{2} \times \frac{1}{2} = 2.5$  38 12

" " N " 40 12

" " E " 39 3/4 1/2

" " W " 35 69

Set 1/8 P E of center at 1967

{ Sugar 8 N 62 E 69 3/4

Set 1/8 P N West of center at 1784 1/2 on

at tally 5219 and 2 lks S of Rand

{ Sugar 12 N 13 1/2 W 66

" 15 S 56 1/2 E 63

Set 1/8 P N of center at 2006 on

at tally 5818 and 29 3/4 E of R

{ Hem N 10 N 62 E 5 1/2

{ Sugar S 10 1/2 W 35 1/2

Set 1/8 P S of center at 1996 and 9 1/2

W of Rand { Hem 14 N 79 1/2 E 19

{ Hem 14 S 85 1/2 W 38 1/2

South from 1/8 P East of center Var 3.15° E

3909 W 49 W Dec. 1. 25

West from S 1/8 P on E line Var 1° W

39.55 full 11 1/2 N of 1/8 P

cancelled line E of 1/8 P in center of

58 1/4 { Maple 12 S 6 W 5 1/2

3569  
1784

24

1/2

E + W 1/8 line S 2 1/4 Var 1° W  
 E " W " " NE 1/4 " 40' E  
 " " " " NW " " 40' E  
 N + S 1/8 line on NE " " 3 1/2 1/8

West from N 1/8 P on E line var 40' E  
 3955 full 20 3/4 S of 1/8 P  
 DEC 5.22

South from E 1/8 P on N line var 30' E  
 4003 full 78 E of 1/8 P  
 DEC 195

corrected line north 2 of 1/16 P on  
 center of NE 1/4 } Survey 12 N 87 1/2 E 1/8

May 24<sup>th</sup> 1915  
 West from 1/8 P. N. of cent var 1/2 E  
 18000  
 9345  
 8615  
 18060  
 3751 full 103 1/4 N  
 DEC 2.85

North from 1/8 P W of cent var 5 E  
 4020 full 129 E DEC 329

West South side 1/16 P in NE 1/4  
 { Survey 12 N 71 1/2 E 19 1/2  
 { Bush 24 S 34 1/2 W 18

2000  
 266  
 1784

285  
 285  
 570

8400  
 8040  
 3600  
 2551

1744  
 285  
 4920  
 14272  
 3564  
 508440

329  
 6590  
 285  
 570  
 329  
 199  
 2961  
 329  
 6251  
 329  
 829  
 10  
 3290  
 1945

12900  
 12060  
 84000  
 86400  
 3600

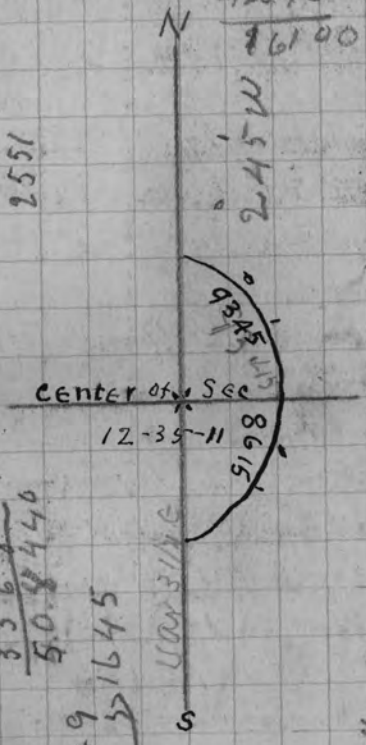
4020  
 12900  
 12060  
 329  
 6590  
 285  
 570  
 329  
 199  
 2961  
 329  
 6251  
 329  
 829  
 10  
 3290  
 1945

7765) 9800 ( 263

7765  
 20350  
 15580  
 48200  
 46890  
 86100

7003  
 1784  
 5219

25



3981) 19900 (5  
 19905

16  
 910  
 1600  
 1548  
 15560

910  
 5460  
 910  
 14360

3981) 19000 (4

329  
 1945  
 329  
 5235



(28)

7.8	8	R 7.00	hall	
2.8	32		4	
2.5	123		98	
2.00	107		87	
Station	H1		incl	Declin
H1	7.80	80	7.80	
H1	2.8	32		4
"	2.5	123		9.8
"	2.0	107		8.7
Washbas	4	100		
"	2.0	5.1		4.1

	H1		inclin	Declin
1	107.80	10080	107.00	
2	102.80	100320		103.40
3	102.50	10280		980
4	102.00			870

169  
7  
119

107  
20  
87

(29)  
32  
28  
4

123  
25  
98

57  
1  
4.7

107  
51  
56

SEWER on wabas ave



SEWER on wabash st

780	80	7.00	
280	320		40
250	1230		9.80
200	1070		8.70

at ocella st

2.00	5.10		4.10
------	------	--	------

8286 ) 19600 (2366

16572	43	196
<hr/>		573
30280	7098	588
24758	18928	1372
<hr/>		980
55220		112308 (1352
49716	824	824
<hr/>		29448 2124
5494		24858

7974 ) 45650 (5724

39870		46900
<hr/>		41230
57800		3670
55814		
<hr/>		19420
15948		
<hr/>		38720

4565

573	
13695	
31955	
22825	
<hr/>	
26137	45 (327
23976	772
<hr/>	
21414	
1544	
54624	
88	

1088

5600	
946	
<hr/>	
4654	
4649	
<hr/>	
4654	
105	
<hr/>	
4549	

7.00

5069	
1085	
984	
<hr/>	
3981	
110	
980	
<hr/>	
870	
1260	

8286 ) 4649

4754	
105	
<hr/>	
4649	

8156

4549	
4149	
<hr/>	
400	

8156

8156	
4149	
<hr/>	
400	

4149

4149	
241	
<hr/>	
4390	

2149

2149	
241	
<hr/>	
4390	

8008

8008	
50136	
336	
<hr/>	
2356	

4149

4149	
400	
<hr/>	
857600 (20.7	
8298	
<hr/>	
29800	
28043	
<hr/>	
17540	

675 feet

7.00

2149	
201	
<hr/>	
2356	
2326	
<hr/>	
36	
50136	
6008	

2149

2149	
2366	
<hr/>	
14136	
14136	
7068	
4712	
<hr/>	
55742.96	

7.5  
7.8  
8.8



34

4646 E of NW 1/4 P more tall S 22 Lks

South from 1/4 P bet 25-30  
4131 full 92 west

Var 7 1/2 E

SEC 2227

connected line N for Road

South from NW cor of 30 N 25 E

4157 full 18 E of 1/4 P

SEC 433. connected line north to cor

North from NW cor of 30 N 31 E

2076 full 8 1/2 E of 1/8 P

4152 " 26 E of 1/4 P. change course 22

North from 1/4 P bet 19-24 Var

4141 Hit center of Post

July

Survey of Road for town

of Schoettle in SEC. 13. 3510 E.

West from part 1/4 P Var 000

8674 full 48 1/2 N of W. 1/4 P

Connect Var 20 W SEC 559

at 4646 Turned off an angle of N

4

35

North from W 1/4 P of 13. 35-10  
Var 34 1/2 E

1400 Enter dry Swamp

3070 Shearn 15. runs SW

3916 full 11 E of cor old part # 19 EBT

MEC. 256

Sec 11-35-10

U SEC 11-35-10 E Jan 23

West from SE cor Var 45 E on old Rank

21631 to a point on shore of lake on

my old rank. Made in Jan 1900

Rank is 62850 E of SW cor center

line and set this stake 25 links N of Rank

connected line & prolonged it to shore

of lake and set me at 1671 W of SE cor

{ VI Rank 7 N 33 E 23

. 6584 E 46 1/2

SEC for connecting line from SE cor

West to MEC is 1526 connected line East

East from SW cor Var 34 1/2 E

1960 to my 1/8 P set in Jan 1900

3017 to " MEC-58 W of Lake shore

3017  
1960  
1057

36

June 24 - 1915

Survey of road for Town of Schocks  
commencing at 1/4 bet 13 & 14 352

Thru	N 61 1/2	West	864	Var 4° E
"	N 30 1/2	"	200	"
"	N 3 1/2	"	575	"
"	N 49 1/2	"	350	"
"	N 30 1/2	East	225	"
"	N 12.00	"	200	"
"	N 33 1/2	"	175	"
"	N 48 00	"	350	"
"	N 61 1/2	"	400	"
"	N 20 1/2	"	325	"
"	N 9 -	"	250	"
"	N 36	West	500	"
"	N 50 1/2	"	200	"
"	N 48 1/2	"	730	1/2 to SEC

line bet 11 & 14 and 489 East  
of MC + 1182 West of SE cor 11

Thru West on MC for 489 to MC

1	N 59 1/2	West	475	on lake shore
2	N 75 1/2	"	700	" " "
3	S 88 1/2	"	900	" " "
4	S 80 00	"	300	" " "
5	S 74 1/2	"	500	to 60 LK E of center of town
6	S 80 -	"	775	W End of Dan
7	S 60	"	142	line bet SEC

11 & 14 end 2930 East of SW cor of 11

37

SEC 10-35-10E June 24-1915

went SE cor found org pin and  
stump of Birch and a Post 1st in 1900  
Also new bearing made Nov 1908  
See pag 57 of book 1908

{ W Pin 15 N 32 W 21

West from SE cor Var 345 E  
3850

4007 fell 5 1/2 N of 1/4 P OK

West from 1/4 Part 42 1/4 C

1000 leave same

3300 enter "

4012 fell 14 1/2 N of cor

SE 352 connected line east to  
SE cor of 10 for Road for Schocks

Nov 1908

SW cor 15-35-10 { W Birch 14 N 40 W 22

Ham 9 S 65 W 36

Dist to N 1/4 Part of 15 is 39.70

Var from " " " to SW cor is 5° E

West 1/8 P. S line 10 { Tam 10 N 40 E 10

{ Ham 11 S 69 W 20 1/2



38

Survey of road for Pine Lake  
June 28-1915

went to west 1/4 P. of 19-37-9E  
as near as I could locate it. It  
at the intersection of roads  
Set instrument at 1/4 Past and flag  
at corner and set line stakes between  
Was only 2<sup>nd</sup> Gout. Var 8° 15'  
north from cor to 13-18-19-24

Was 3 1/2 E. Gout. Var 7.40  
4073 well 102 3/4 W of 1/4 P found stps  
of both org trees + an old Part. Drove  
an iron pipe 1/2 x 24 inches at corner  
and 1/4 P. and drove iron pipe 1/2 x 30  
inches 37 1/2 links path East of 1/4 P. cor  
Dec 2.52

north from 1/4 P let 13 + 18 Var 2<sup>nd</sup>  
4028 pipe 15 1/2 East of cor stps for BT OK  
Dec 3.85

West from 1/4 P let 6 + 31 - 37 + 38  
Range 7 Var 2<sup>nd</sup>

4313 well 17.5 of cor found an  
aven of 100 proportioned same and  
set 1/8 Past at 20.47-63 +  
WP Stb 30 N 61 1/2 W 43

39

from cor	to 13-18-19-24	14.62
Thence N	58 East Var 2 <sup>nd</sup>	289
" "	43 " " "	436
" "	4 " " "	575
" "	6 " " "	938
" "	2 1 1/2 " " "	500
" "	1 1/2 " " "	840
" "	8 0 1/2 " " "	375
" "	8 5 3/4 " " "	237
" "	7 2 1/2 " " "	518
" "	13 " " "	272
" "	8 1/4 " " "	1256
" "	9 1/4 West " "	903
" "	29 1/2 East	1117
" "	41 " " "	1512
" "	61 " " "	547
" "	36 " " "	1334
" "	28 1/2 West	1482
" "	9 1/2 " "	2123
" "	12 1/2 " "	986
" "	48 1/2 " "	869
" "	on & w 1/4 line in sec 6	226

to 1/8 Past west of center of <sup>sec</sup> 6  
Thence north on 1/8 line sec 6 3691  
to W 1/8 Past on N line of sec 22476  
Set - 37-9-E 4000  
2 + 3/4 miles + 22 rods 4073  
305.49

40  
23 1/2  
11

From N ed  
 then East on 1/4 line 226  
 " South 48 1/4 East 869  
 " " 12 1/2 " 986  
 " " 9 1/2 " 2123  
 " " 28 1/2 " 1482  
 " " 36 West 1394  
 " " 61 " 597  
 " " 41 " 1512  
 " " 29 1/4 " 1117  
 " " 9 1/4 East 903  
 " " 8 1/4 West 1256  
 " " 13 " 272

819 on this range  
 cross E 1/4 W of 1/8 W of center  
 300 W of 1/8 W of center

to line from South

Sec 31-38-9 E  
 East from NW cor Var 6 E  
 600 leave Swamp  
 4981 fell 201 N of dom 1/4 P  
 found an iron of 795 at 1/8 N  
 2601 E of SW cor WPS 11 S 80 1/2 E 43  
 " " 20 S 84 1/2 " 50 1/2

cross N & S Road at 5069  
 Set me on N & S 1/4 line 5069 N of S 1/4 P  
 1131 N of center } Pin 10 N 71 W 30  
 W 1st 125 386 32 1/2

1957  
17

(41)

SEC 31-38-9 E July 6 1915  
 Went to S 1/4 P. found an RT set Peas  
 and run north Var 6 West  
 2207 west marsh on S side of Jones Lake  
 4832 to north shore of Lake  
 7974 fell 456 1/2 E of 1/4 set by 5049  
 SEC 5.7 25 - found Dors Post  
 and both bearings. South is stump. I  
 remarked it. North B.T. dead & down mark  
 ok. set new Post and corrected him  
 at 4832 SEC 5.7 24 change course 3 15

East from W 1/4 P. Var 4 E  
 Set old Post & remarked NE exp BT  
 1415 to road  
 2367 " Lake  
 5600 over "  
 8286 fell 196 N of Junction 1/4 P  
 SEC 2366 change course 1 21  
 Came to 5600 and moved it South 132 1/2  
 and offset N 1088 Then W to center  
 E & W 1/4 line 946 angle is 8415  
 SW W 1/4 P 4549 } Set 1/8 P W of center at 2356  
 " E " 3737 } and 55 3/4 S of Road  
 " N " 3993 } Spv 5 N 61 W 6  
 " S " 3981 } " 5 S 1/2 E 5 1/4

42  
Tally 2367 W 11 + South 55 3/4

South from W 1/8 P on N line  
Var 15' E

3981 well 19 East of 1/8 P

SEC. 30. 38. 9 JULY. 10 - 1915

Went to W 1/4 P found Dows bearing SEC

any notes for Nov 1914. Rem East var 6' 15"

7.750 beam Swamp

3785 top of Hill about 200 East of Lake

5788 well 19 N of Dows bearing for center

Which stands 3 links South of line makes my  
Departure from center 16 links

Dec 278 Went west to set 1/8 P at 2780 and

7 3/4 South of Road } WP in st 12 N 7 E 5

10 S 20 17

North from W 1/8 P on South line 200

3812 well 9 1/2 W of 1/8 P W of center

Went south to set Temp 1/16 P at 1916

West from line 1116 Part var 5 1/2 E

Var of Range line from W 1/4 P of 30 South to cor 2 45'

West from 1/4 P South to cor 13807 north 2.30

2900

Reverse

43

Commencing at tally 2044 on 1/8 line

Thence South 73 West 900

" " 89 " 250

" " 23 1/2 " 425

" " 3 East 825

" " 26 1/2 " 1000

" " 31 1/2 " 700

" " 11 1/2 " 2897

180 S Laks which stand on town  
line

Thence on town line to W 1/8 line 540  
on South line of Sec 30 551

Commencing at W 1/8 P on S line of 31. 38-96

Thence west on town line 5400

" N 11 1/2 W var 40 E 28970

" " 31 1/2 " 7000

" " 26 1/2 " 10000

" " 3 " 8250

" " 23 1/2 East 4250

" " 89 " 2500

" " 73 " top 1/8 line in 31 30 9000

" " on 1/8 line to W 1/8 P S line of 70 440

" " " 116 " to 1/16 P SW 1/4 30 19060

" West on " " 1/8 P on R line 26910

" north on Range line 3750

to N 1/8 P on W line of 30 17920

4043  
2144  
6147

Survey of Road for Town of Harrison  
July 12 1915

Began at the N end of a road supposed to be  
an section between sections 20 & 21 35-8 E  
Var 4 1/2 E

1972 July 26 East of cor  
Hem ok NE Bush Backside ok

Mad new bearings } Hem 12 N 52 1/2 E 65  
                              } Sugar 10 S 64 W 63

DEC 1.313 corrected line South for road

North from cor to 16-17-20 & 21 Var 3 1/2 E  
3500 Enter burned Swan timber down

4400 Stream

7150 leave Swamp

7800 Enter "

8264 pole 235 West of corner

DEC 2.84

North bet 8 & 9 Var 3 1/2 E

4043 pole 208 E of 1/4 P 2nd survey

Dec 51

N from 1/4 P bet 8 & 9 Var

4208 cor on fire see Note

4043  
16000  
4419

Survey of road for the town of Harrison  
Lincoln county wis

I hereby certify, that I have this date,  
by and under the direction of the  
board of Supervisors of the town of  
Harrison completed the Survey of the  
following described road to wit:--

Commencing at the north end of a  
road supposed to be on the line between  
sections 20 and 21 in township 35  
north, Range 8 East. Thence north  
Var 4 1/4 East. x x x 19.72 ch

to corner to sections 16-17-20-21

Then north on section line 82.64 "

to corner to sections 8-9-16-17.

Thence north on section line 61.47 "

to north 1/8 Part between sections  
8 and 9 Same township & Range.

thence west an 1/8 line in section 8-4026 "

to 1/8 Part, north of center of section 8

Whole distance of road surveyed 20419 "

or 2 1/2 miles. 4.19 chains.

The courses & distances above given  
are the center and line & line of  
Road New bearings

Hemlock 12 N 52 1/2 E 65  
Sugar 10 S 64 W 63

PHU  
Surveyor



(46)

SEC 31.39-10.E JULY 16. 1915

Went to W 1/4 Post found Post + 8 trees of oaks

Run East on 1 1/2 E.

2510 d/alt N 100

7746 fell 137 including d/alt

DEC 1779

75 - over 30.2/3

70 " 23 1/5 32

65 " 15.45

7746

60 " 8 3/4

3873

55 " 2.65 South

50 " 1.50 "

4000

45 " 2035 "

3873

40 " 2920

127

35 " 3815

66

30 " 46.89

16 1/2

25 " 55.75

14

20 " 35.40 North

73.10

15 " 26.55

10 " 17.70

5 " 8.75

POSTED

(47)

SEC 6.38-12 July 19. 1915

Went W 1/4 P behind South org tree

Set new Post and made new beams

Tam 8 N 55 W 86 1/2

No 10 N 44 1/2 E 43 1/2

Run N U on 3 1/2 E

3830 fell 8 1/2 East of con 3 org trees

Set new Post. This is the exact distance

given U.S. Surveyors notes

Went South and set 1/8 Post

SEC 222 5 Spruce 7 N 57 W 11 1/2

Tam 10 S 69 E 8 1/2

South from W 1/4 P. on corrected line from  
corner U on 3 1/2

2640 intersect Lake M.C. gaps

3473 over lake to me S. shore of Bay

fell 25 East of M.C. set from org tree

DEC 78. Set MC on N Bay of Lake

at 2640 S of W 1/4 P. and 40 North of Lake

Should be set at 2640 3 Pines 12 N 16 E 59 1/2

Tam 12 N 40 W 69 1/2

corrected line north and set 1/8 P at 2000

S of 1/4 P + 15 3/4 W of R. W. Bnd 10 N 99 W 29

" " 6 S 2 E 12 1/2

2689    514    3900    3900  
 3041    482    16    16  
 3041    482    23    44

SEC 12.38-11-E July 20" 1915

To locate MC on north line. begins at MC on range line 4.54 N of corner in lake and run west 514. Then south 454 then East 32. to shore of lake and set MC

W Pin 18 N 34 W 26 1/2  
 " " 20 S 42 1/2 W 66 1/2

West from MC on west line was 4 3/8

- 1500 center Swamp
  - 2250 Stream 30 pins SW
  - 2689 Bend in same stream
  - 3041 one Bend .. "
  - 3884 pier 23 4 S of 1/4 P
- SEC. 600

Random 15.35.56 E of 1/8 Post  
 It is 1998. S of N 1/4 Post. Dec 1883

North from MC on N + S  
 1/4 line 918  
 and set N W cor of club

W Pin 10 N 36 W 412  
 Stone 15 S 66 1/2 E 23

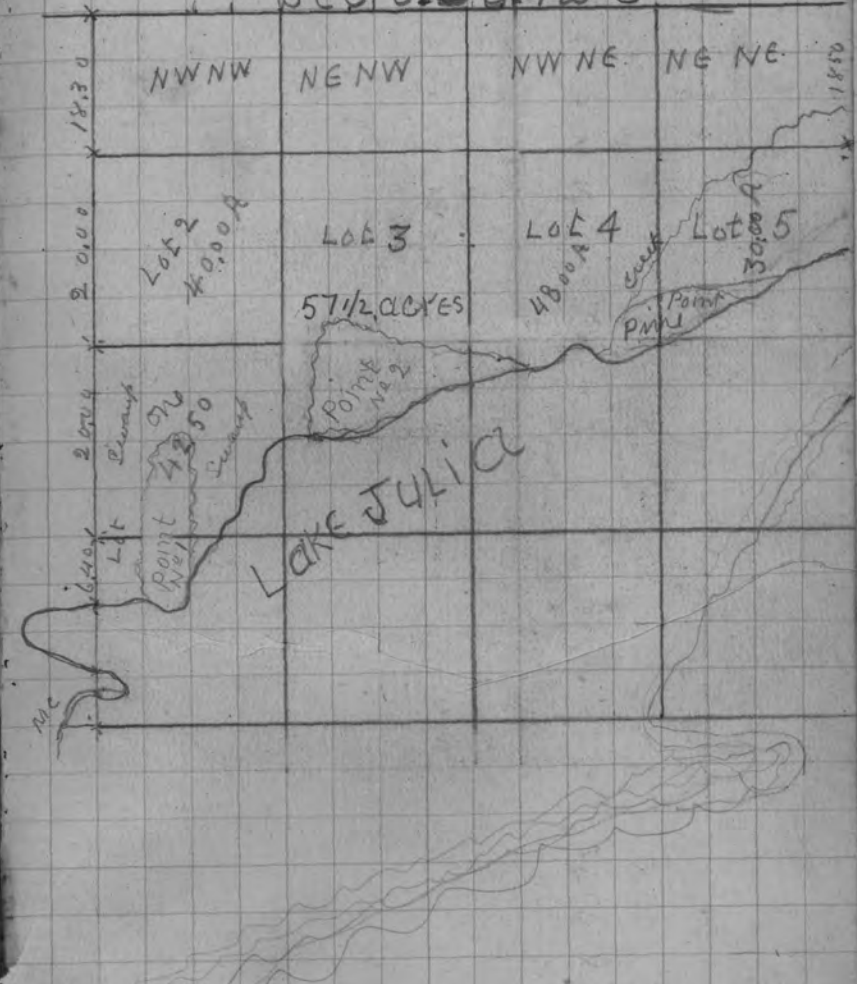
Then N 71 1/2 E 1500 + set Post far  
 N E corner of club land

Birch 10 N 32 W 26 1/2  
 " 14 S 74 1/2 W 39

86

49

SEC. 6.38.12 E



Then S on 830 E 370 to Lake  
 set MC W Pin 12 N 26 1/2 E 39  
 " 20 N 26 W 29

Myers lines. from his west line. on Lake,

It is 278 west. 278 H. and runs west from Myers north State 200. and then South west to a Point on his South line which is 278 feet from

331.5
<u>21.301</u>
3315
945
<u>87815</u>
25
<u>94065</u>



B 295

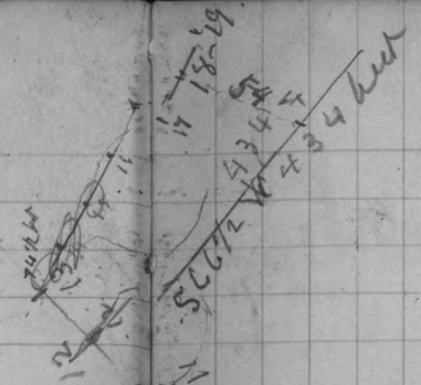
331.5  
 21.301  
 3315  
 945  
 87815  
 25  
 94065

278 ft  
 200  
 167  
 229.5  
 278 ft

1  
 2  
 3  
 4  
 5  
 6  
 7  
 8  
 9

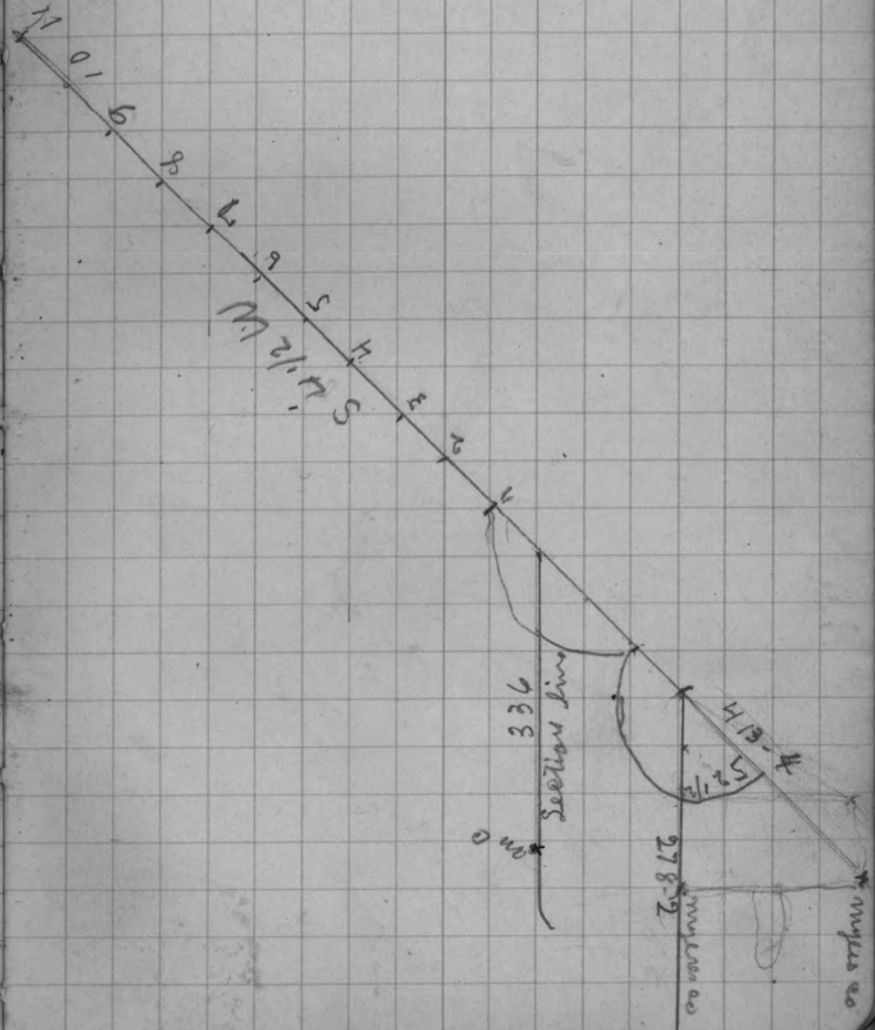
North

52



from lat 13 + 14 course is 74° W

53







(56)

Sec 5, 36<sup>9</sup> July 26 - 1915

South from 1/4 P in SE 1/4

Run South Var 1° E on offset of 50 back

2099 full 50 1/2. End E 1/4 on south line

South into Sec 8 on 1/8 line Var 1° E

813.8 to Swamp

meander Swamp

x	Thru	N 83	East	55.0
x	"	N 55 1/2	"	7.50
x	"	N 8	"	65.0
"	"	N 88	"	12.68

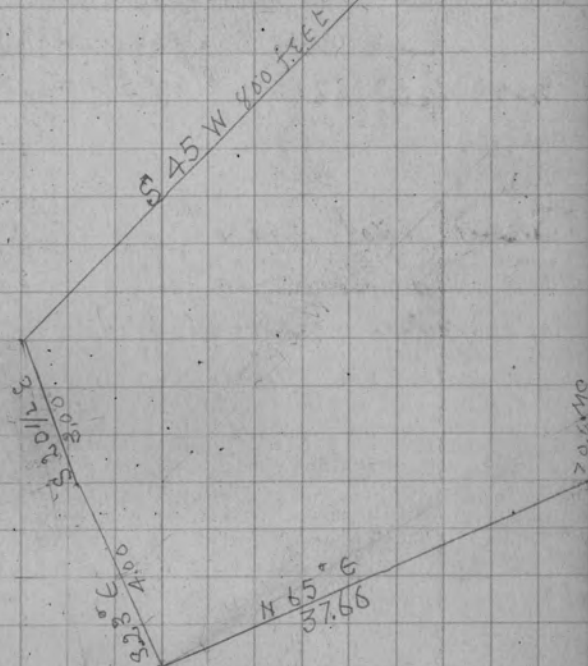
It is 438.5 to car

N from SE cor. 5 Var 4° E

1244 to S line of 84 W R road

(57)

9 x 11.4 line MC  
300 ft





60 1088 to Run N from this corner Var  $4\frac{1}{2}^{\circ}$  E

Survey of Road for Town of Lynn  
Commenced July 29 & finished

North between 21 & 22 - 36-4 on Lynn Road

4000 did not find 1/4 P

Still on same course Var  $3\frac{1}{2}^{\circ}$  E W 15+16

8000 did not find corner

17227 fell 475 E of supposed corner

corner south and at 8088 fell  $359\frac{1}{2}$  E  
of corner to 15-16-2122, found stps of old line

made new bearings { W Pine stp 28 N  $82^{\circ}$  W 75  
" " " 30 S  $85\frac{1}{2}^{\circ}$  E 32 $\frac{1}{2}$

DEC 889

Went South and set 1/4 P at 4044 and on Road

{ W Pine stp 22 S  $61\frac{1}{2}^{\circ}$  W 34 $\frac{1}{2}$

SEC 30-36. N. E

East from 1/8 P E of center Var  $55^{\circ}$   
1276 to Right of Way of C & N W P 11

The N E SE is 2004 on West line

" N 1/2 of it would be 1002 chain  
where E & W line would divide it is  
about 100 chain wide

The

1/4 P bet 27-28 } Birch 14 S  $65^{\circ}$  W 28  
fin 6 N 13 E 12

Corner to 21-22-27-28 } Birch 9 N  $20^{\circ}$  E 66.7

orig 87' down ok  
Cedar 10 S  $38^{\circ}$  W 75' 900

new beam Dead Pine 9 N  $66^{\circ}$  E 73 $\frac{1}{2}$

116 116 65 116  
70 75 580 55  
8120 580 686 580  
812 754 580

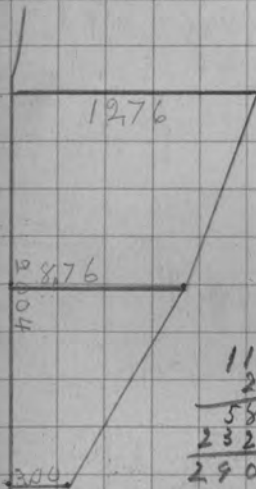
8700 116 6380  
50  
5800

116  
45  
580  
464  
5220

116  
35  
580  
348 348  
~~394~~  
4060  
348 4004

116  
25  
580  
232 1740  
2900

116  
24048  
44088  
464928



61





(64)

SEC 5-36-8 SEPT 10 1915  
Went to NW cor found Post +  
B.T. I made in 190

Run Var 14° E.  
3132 fell 275 DEC 240  
correct var 1240%

2110 to Lake  
2526 own

See 2.36-13 Sept "14" 1915  
Went to SE cor found E.B.T. OK West  
one is down mark of set post  
and run N Var 4°

1250 enter Tam Swamp  
3000 leave " "  
8118 fell 67 E of cor OK

found a shortage of 36 links  
corrected line South and set 1/4 P  
at 3982.20/100 + 32.85/100 west of Road  
corrected line South to SW cor  
corrected var at both ends 4.27

W 1/4 P } Sugar 12 S 18 1/2 W 3 P 1/2  
Buck 26 S 60 E 15

4892 1/2 (65)

See 2.36-13

W 1/2 W 1/2 N  
East from SW cor on N 1/2 E of  
4091 fell 95 N of 1/4 P OK  
DEC. 232

corrected line west to corner var 2'40"

North from S 1/4 P Var 5° E  
4000 enter Tam + Spine Swamp

4400 leave " "  
8110 fell 117 E of 1/4 P NW brook  
South one gone made new bearing  
Sugar 10 N 45 1/2 E 36  
change course 7' DEC 21

East from N 1/4 P. Var 3 1/2 E  
1970 fell 15 N of corner 1/8 P  
corrected line west to step  
DEC. 76

17

East from W 1/4 Post Var 250  
4036 + 11 + 8 1/4 link

7814-83 1/2 N of 1/4 P  
all bearings both down made new  
Ham 12 N 64 1/2 E 14  
Ham 18 N 61 W 28 1/2

Set to E 1/4 P 3786 1/2  
Set 1/8 P E of center Sugar 9 N 63 W 48 1/2  
BU 908 1/2 E 25

(66)

3784

SEC 25-42-5 Aug 13 1915

West from N 1/4 P Van 350 E  
1753 To River and set ~~and~~ on line

South from N 1/4 P Van 5 1/2 E OK

West from a stake 300 S of 1/4 P  
1572

On S line run west to River it is  
1255

See 2-36-11 cont Aug 17/15  
north from 1/8 P E of center 1894  
West to N 1/4 P 4129  
Dist to S 1/4 P 3981

Dist to W 1/4 P 4030

" " E 1/4 P 3784

Center } Brok 12 N 71 W 39 1/2  
" Nam 12 S 20 E 43  
Set 1/8 P E of center at 1894

(67)

See 2-37-7 Sept 22/15

Went to S 1/4 P & set this Post  
from arg B.T. Oct 1914

Run N Van 5 E

4000 " 5 1/2 E

6000 " 6 E

7800 " 5 1/2 E

8300 fell 294 2/3 of 1/4 P

See 3548

Set corrected stakes at center  
& 1/8 P south of center marked.

Pin Stk 18 N 50 E 11

" " " 18 N 54 13 1/2

See 26-39-7.6 Sept 24 1913

Went to MC on East Shore of Lake  
found Stump Pine B.T. OK. also the map  
Lying down. marks on both OK

Run East Van 4 1/2 E -

2228 fell 48 N of 1/8 P set at ~~pin~~  
made new bearing WP 16 N 53 W 91 1/2

Run N to Lake and set me at 1421

WP 36 88 1/2 W 24 1/2

WP 16 82 1/2 S 10

(68)

Sec 3-387 Sept 28-1915

NE cor ok Run S Var 3.30 E

13.90 feet E of Dams 1/4 P  
connected line N to cor

West from N 1/8 P on E line Var 3 1/2 E  
354 to Easterly line of Plat of T. Lak.

Angle at this point to E line of Plat  
is 55.55 + 124.45

Thence N 34° W 9.58 ch

" S 56 W 442 ch

South from E 1/8 on N Line Var 4° E

368 A right of way of C + NW RR co

See 2-36-10 Jan 7 1899  
course of E 1/4 line 50 Var  
course " N + S 1 " 110.00 E  
center of SEC. { W 1/4 N 23 W 18 3/4  
                  { W 1/4 S 68 1/2 E 15 3/4  
1/8 P. W of center, Tam 16 N. 57 1/2 W 21 1/4  
                  { Tam 15 S. 47 1/2 E 22  
It is 19.34 bet W 1/4 P + 1/8 W of end  
and 3839 between 1/8 P and N + S

2033) 8100(4 573  
          8132  
          ---  
          268  
          573  
          4584  
          2033) 57313(2.49  
                  406  
                  96531  
                  8132  
                  ---  
                  17210  
                  18197

2.30  
69

SEC 3-36-10 Oct 5" 1915

South from E 1/4 P. Var 13 E

3783 feet 2 1/2 W of Dams cor. look  
his bearings } Tam 16 N 54 W 8  
                  " 18 S 34 1/2 E 47 1/2

West from SE cor Var 15 4 1/2 W

1843 feet 8 N of 1/8 P ok

North from E 1/8 P South line

Var 17. 1/4 E

See 2-36-10

SEC 2.36 10 E Oct 6

2038 feet 81 N of 1/4 P. Set new  
Post from SE tree & made

New Range } WP 51/36 N 63 W 7

See 40. corner Var 3 1/2

East from N 1/4 P Var 1° E

4070 feet 8.6 N of cor

Set 1/4 P at 2035

WP 57 24 N 9 W 5

3.11 " 18 S 27 E 41

573

86

3438  
4584  
4086) 49278(1.23  
          4086  
          ---  
          9418  
          8172  
          ---  
          1246



S & C 30-39 7/1 Oct 26, 1905

West from ME on N line Va. 445  
864 over wet Swamp or Flanagan

From corner to 20, 21-28, 29-35-10  
Run South Var 2° E  
3783 to 118 P } cedar 10 8 85 W 22  
                  } Torn 12 8 61 1/2 E 28

West from same corner do not know Var  
40 to 14 P. I set this 14 P in 1899  
from ang! beams made new one  
Sugar 12 S 45 3/4 W 28

angle at see cor 91.5°  
" of RR from east see line 107

3315  
301  
-----  
3015  
945  
-----  
2070  
100300  
1657 1/2  
-----  
828  
657  
-----  
2485

R. Schoeneck

Nov 15 2 fares to Enderbair & Return 2.08  
" " 2 meals at Pelican .70  
" " 1 1/2 days surveying 7.50  
" " Paid assistant 1 1/2 days 3.75  
15.03

301  
320  
-----  
620

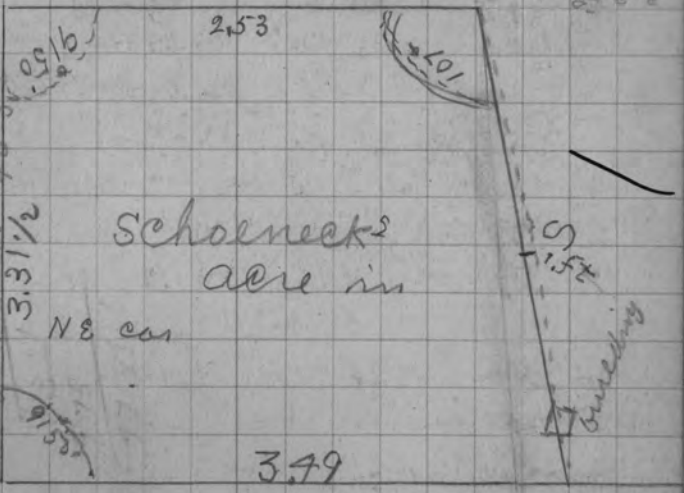
349  
320  
-----  
29

349  
301  
-----  
48

319  
301  
-----  
18

344  
301  
-----  
43

379  
253  
-----  
602



Nov. 14, 1915  
I surveyed an acre of land  
in NE cor of the NE-NE of Sec 29,  
35-10 in conformity to deed given  
by the Intermar Land Co to  
R Schoeneck. Dated August 5  
1903. and recorded in Volume  
39- Page 268. recorded in  
Register of Deeds office.

Sept 8- 1903  
J L McLaughlin

602  
301  
-----  
301

916  
80  
85  
80  
80

72

Survey of Road for town of Lynn

North from cor to 15-16-21-22<sup>Nov 18 1915</sup>

This corner was set by me July 31<sup>st</sup> 1915

5512 am 35 E of original line

8016 full 3 E of cor found ang tree

which stomp 576 W 42 mod near

bearing W.P.S 36 N 78 1/2 W 131

DEC 116 chng. coun 210' W on 216

corrected Van 4.40

corrected line South Lat 1/4 P at 4008

and 46.19/100 West of Randon

W.P.S 36 West 84

North bet 9+10 4 1/2 E Nov 20 1915

3600 Enters Cedar Swamp

4000 SET LINE STAKES + left it

to much water under snow

E-W

89  
44 1/2

angl at 1/4 P 8920

3.20

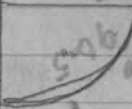
8920

9045

17925

8965

N 45



1915

75-87

SEC: 2, 9, 39-7 1100 24 (73)

70-81.20

WENT TO SE COR. FOUND

65-75.40

Stump of ang BT's made near cor

60-69.60

J.P.S 14 N 6 1/2 W 49

55-63.80

" " 12 S 24 E 69

50-58

Run East Van 3 1/2 E

45-52.20

2332 full 12 1/2 N of cor OK

40-46.40

DEC. 536 OK

35-39.60

30-34.80

North from S E cor Van 3 1/2 E

25-29.00

4000 did not find 1/4 P

20-23.26

4832 C + NW RR

15-17.40

8089 full 70 3/4 E of cor found

10-11.60

Post + set by Dan and me

5-580

ang tree made near bearing

W.P.S 14 S 33 1/2 E 85

Went South + set 1/4 P Post at 4040 E 95 1/3

W of Ra } W.P.S 30 S 65 E 20

" " } " " 36 S 25 1/2 W 58

DEC 875

Went South + set 1/8 Post at 20.20 and

17.65/100 W of Randon

W.P.S 28 N 27 1/2 W 4

corrected line S. to corner +  
Took angl bet SEC lines which  
is

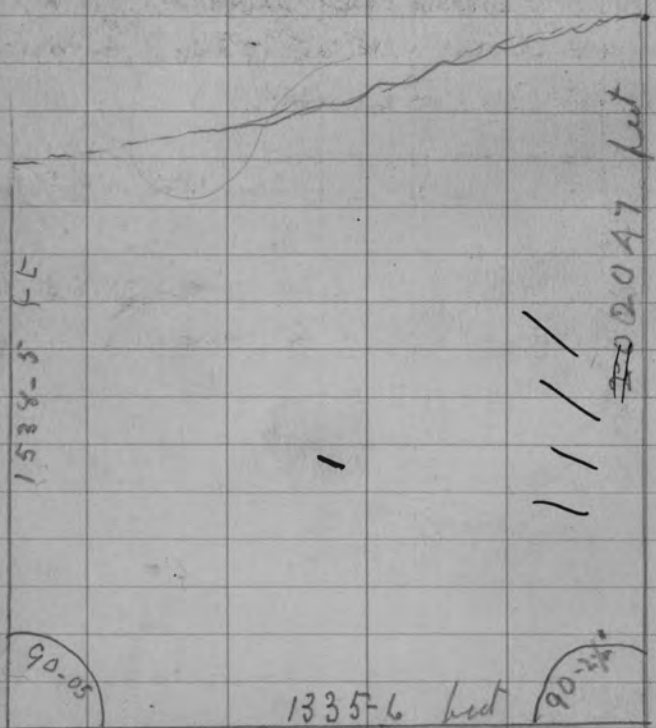
74

1915

SEC 29. 39. 7 continuous 25  
 West from East  $\frac{1}{4}$ P. was  $3\frac{1}{2}$  E and  
 4045 feet  $18\frac{1}{2}$  S. of Dours center no beams  
 but Post is marked

8089 feet  $29\frac{1}{2}$  S of  $\frac{1}{4}$ P. org trees  
 SEC 36 47

West from  $3\frac{1}{8}$ P. on E line was 40 E  
 in feet 2047 to one & 2068 feet  
 E line in feet to  $\frac{1}{8}$ P is 1335-6  
 South line to one 1538.5 feet



75

SEC 33-39-7 Nov 29 1915

Went to N  $\frac{1}{4}$ P. Set post from stump  
 of org trees Run E was  $4\frac{1}{2}$  E

4061 feet  $36\frac{1}{2}$  N of cor Set Post  
 from stump of wood B.Y.P. 24 S  $45\frac{1}{2}$  W 32  
 made N side W.P. 28 S  $42\frac{1}{2}$  E  $35\frac{3}{4}$

Went west & set  $\frac{1}{8}$ P at 2030  $\frac{1}{2}$  and  
 $18\frac{1}{4}$  S of Road W.P. Sta 30 N  $69\frac{1}{2}$  E  $8\frac{1}{4}$   
 " " " 24 N  $62\frac{1}{2}$  W 20

S. from  $3\frac{1}{8}$ P on N line was  $3\frac{1}{2}$  E  
 3975 feet 11 links E of Dours  $\frac{1}{8}$  Post.  
 connected line North 1987  $\frac{1}{2}$  and  
 set  $\frac{1}{8}$ P. in RR fence

On iron mon W.P. 14 S  $14\frac{1}{2}$  W  $76\frac{1}{2}$   
 there is 30 W 2.72  
 " S  $49.45$  E 573 to a W.P. 14 for cor  
 " N 81 E 121  $\frac{1}{2}$  mch 27 N 82 W  $34\frac{1}{4}$

a piece of land in in lot 4  
 Sec 19-39-7-E  
 commencing at an iron gas pipe  
 on South Shaw road in said lot 4  
 from which a W Pine 14 - inches in dia  
 bears S 35 1/2 W 76 1/2 links  
 thence S 30° west 2.72/100 chains to  
 a cedar Post 4 x 4 inches  
 thence S 49 3/4° East 5.73/100 chains  
 to a W Pine tree 14 in dia marked  
 west & north sides thus X  
 thence north 81° E 12 1/2/100 chains  
 to a gas pipe on shore of lake from  
 which a map 7 in in dia bears  
 N 82 W 34 1/4 links  
 then westerly along shore of lake  
 to place of beginning  
 Van of needles for all courses  
 give is 4° E  
 Nov 30 - 1915  
 Work done for John Green

676

8000
368
7632

1420 1/2
148 1/2
1463

4000
3754
46

Dec 19 - 36.10 Dec 2 19 15  
 West from NE cor of run west Sec 4  
 1.25 to Run  
 675 - over bend in run  
 1350 to Run  
 1450 over Run South west  
 7632 full 1463 . DEC 19 15  
 Found on Shortens 5.00 proportioned same  
 and set 1/4 Post at 3754 and 7.19.2/3  
 { W Pine 12 N 27 E 3  
 . . . 10 S 82 1/2 E 333/4  
 set W 48 P. at 5632 + 1079 1/2 S of Run  
 { S Pine 14 S 82 1/2 E 25 1/2

1907/10000 (5.3  
 4595  
 6650



(78)

See 29-36-10 DEC # - 1915  
South from N 1/8 Post & line W 45 E  
which I set DEC 7. 1897 Tamok  
2116 full 1/2 links S of 1/4 P  
South on same same & line

950 Pelicans Run

1050 over dam

1500 head in run

1750 over head

2130 Set 1/8 P 3 links N of line

850  
200  
11  
700  
1700

Went from E 1/4 P W 45 E

1000 old tote road

4157 full 2 links N of center

old { Tam 12 N 39 1/2 W 16

beams { Spr 8 S 44 E 13 1/2

Went to N 1/4 P. found Post & BT's  
made in DEC 1897

Went to N WEST cor found Post &

Set from any beams in DEC 1911

= Sunday DEC 5 - 1915

East from N 1/8 P W line W 45 E

8370 full 9 1/2 S of 1/8 Post

DEC "14 1915

(79)

Burny of Road for Town of Lynn  
Began 4000 north of corner to  
9-10-15-16 which I had run in  
Nov. 1915 & set line stakes in a  
Cedar Swamp old line 75 N

5575 Stream 20 runs E

8000 Did not find corner leave Swamp

10200 leave Swamp

17296 full 131 S of cor set Post from

NW BT ok made new beams  
{ WP Stab 36 S 60 E 23

look up 1/4 P  
corner

DE 757

Set cor to 3-4, 9-10 at 7907

{ center Gray boulder 2x3 hwt 18 in high

& beams S 52 E 66 1/2

Set 1/4 P. best 3+4 at 11860 + 8978

2nd Post { WP Stab 20 S 77 E 65

" " 28 S 78 W 27 1/2

{ cedar 10 S 65 E 42 1/2

N 1/8 Post 9+10 . 10 S 87 W 72 1/2

20

11971  
11165  
806

SEC 8 35-11.8. Dec. 20" 1915

97.85 FELL 195 S. of NE COR

Found Post Set by Dos. Org trees  
+ Dows new bearing

2 Sugar 10 S 13 W 19 1/2

Went West & set 1/4 P at 4892

and 97 1/2 2 Sugar 12 N 1/2 W 117

Went West & set 1/8 Post at 2446

+ 483/4 W of B Bush 14 N 35 E 12

DEC 199. Computed was 5.10

Came down at 1230 AM DEC 22

Sec 4-38-11 DEC 28" 1915

Went to SE corner of Stub of S E line

Ran West was 5° E

2425 over Calks

5225 to Lake found someone MC

7250 over

8140 to Lake

11165 fell 114 S of MC set Post

from S of orig BT's

grew to Pole 10 N 42 W

Horn 10 S 27 1/2 W 66 3/4 87 3/4

DEC 102 chosen course 35

1/4 P is 29 links E of MC deducted 29 links

have 11165 which dist to 1/4 P 11136

Computed from

81

Set E 1/8 S line at 203 1 + 20 3/4 N of Red

" S 1/4 P at 680 W of MC and 3195

" me on E shore of water Lake at 5225  
and 53 1/3 N of Red

Set 1/4 P

Set MC on E side of Point at 7250 + 74 N of Red

Talked with Charles Russer, and he  
said he run this line 3 times and had  
not found a goat mark anywhere.

and I have concluded to divide  
the shortage of 18.64 into 3 parts

Making each 1/2 mile 37.12

Set <sup>corner</sup> at 7424, and 75 3/4 N of R

now on S. 10 links

and East 3 "

Set South 1/4 P at

Set on E side of Point 10 links E of MC

" " East 3 "

3) 11174  
3725  
7550

1174  
39

11174  
3758  
25

7516

7550

516

(82)

North from SE cor var  $3\frac{1}{2} \text{ E } 1'$   
 made new bearing bus 9 w co

{ WP 9 1/2 36 N 61 E 29

When I was west I started 9 lks  
 to far W + 1/2 to far N + 1/2 2925 lines lak  
 8040 feet 9 1/2 W of cor

SEC 11.22 change corner 635

Found an over run of 2.90 proportional  
 same land set 1/4 P at 4149 3/4 and  
 4.65.63/100 E of Random corner Var 3° W

6.50 to west in open field iron  
 proportion monument

Set S 1/8 P an E line at 2075 + 232 1/2  
 East of Ponds in lake no bearings

Went to E Me on N line found Post  
 corner in water. found evidence of orig BT 2

made new bearing { J.P. St 16 N 35 1/4 E 62

Run went to me on west side of Lake  
 bet SEC 5 + 32. Var 1 1/2 E

good dist bet me corners is 6460

my " " " " 6950 an over run  
 of 5.90 proportional same + set corner on  
 ice at 5730

Ham 8 N 5 E 23  
 Fin 8 N 3 W 35

800  
 50  
 744

(83)

Went to me on side of Lake in  
 SEC 9, 8 + 9,

Run N Var 9° E SEC 30-1915

1100 Enter Swamp

4645 to Lake off set E 800

9625 " Medicine Lake

12640 feet 56 SEC 5.87 change corner 3° 20

deposition on line I started on is 744

corrected var 540, SEC 587

change corner 320 correct var 540

good distance is 2000 + 379/2 E 22

good distance is 12286 more 12640

an over run of 354

Set Temp cor at 4630 N of MC on  
 macassar lake bet 8 + 9

Shiny Temp cor on E + W line N 3.63 1/2

" " " " N + 8 " W 119

Set cor to 18, 16, 17 on W

{ Stone 8 S 2 W 160

{ Run 10 S 7 E 195

My notes will read

West from SE cor var 5° E

7424 feet 439 S of SW corner

SEC 5.90 change corner 3.20

Corrected E + set 1/4 P at 3712

and 219 1/2 N

then more S 10 + E 6



(84)

DEC 31 - 1915

north from SW cor Var 4.10  
4480 over Lake

4900 to "

8027  $\pm$  ELL  $3\frac{1}{2}$  W of NW cor on  
medicine Lake

Set MC on S shore of M  
Lake at 4900 { W Rich 5 N 13 E 12  
" " 6 S 6 W 30

21180 Set MC on N shore of Spirit Lake  
{ Y Pin, 14 N 75 W

Found an over run bet SW cor  $\pm$  MC  
of 437 proportioned same  $\pm$  set  $1\frac{1}{4}$  P on  
4437.43 links South of MC.

West from E  $1\frac{1}{4}$  Part Var 145 E  
3000 to Lake

3700 over " corrected Var 45 W

6250 to " "  
7887  $\pm$  3.43 S of 174 Part on ice

Set center of SEC at 39.44 and  
171 N of Randoms on ice No 87

7887  $\pm$  3.43 S of 174 Part

Set  $1\frac{1}{8}$  P E of center at  
1972  $\pm$  81 N of Random

(85)

Set E  $1\frac{1}{8}$  P S line at 18.50 and  
109 $3\frac{1}{4}$  N then  $7\frac{1}{2}$  E  $\pm$  and  $12\frac{1}{2}$  S  
of Rand

Set S  $1\frac{1}{4}$  P. at 3712 and 219 $\frac{1}{2}$  N  
of Random. Then move S. 10  $\pm$  E 6.119  
{ Branch 10 S 34 E 320  
" " 7.588 $\frac{1}{2}$  W 54 $\frac{1}{2}$

Set MC on west side of Stone  
Lake on East line at 2609

Set MC on east shore of Spirit  
Lake at 79 { Y Pin 143 41 E 41

D 9 C for curvature S line 5.90  
change corner 5.20  
curved Var 1 $^{\circ}$  40

11871  
747



Set 1/8 P at 2075 - 232 1/2

North from S 1/4 P Van 1 1/4 E

1100 to Wagon Road

1600 " Lake

4295 hill 86 W = 43

4295  
2147

Went S and set 1/8 P at 2147 and  
43 E of Rut

East from 1/8 P S of Rut V 50 E  
3836 hill 38 N of

Came west + set me at 550 W of 1/8 P

Y Pine 16 N 30 W 88

South hill P

2115 to 16 W can admit +

set me at 7.50

Albert Kos hut

Box 62

3 Lakes

Wiss

5830  
3909  
1921

3542  
3400

5830  
2150  
1986

21

5000  
5830  
2150  
1986  
14

See 30 - 39 - 10 from 8-1916

South from NW cor Van 40 E

8043 hill 20 E of cor ok

Went N + set 1/4 P at 4021 1/2 + 1.00 E

Y Pine 15 West 86

" " 15 S 23 W 73

Went N + set N 1/8 P at 2010 1/2 and

50 1/4 N of Rut Dead tree 10 N 78 E 66

" " 15 S 12 1/2 W 87

Van 2.35 E

Jan 9 1916

South from cor to 17-18-19. 20

Van 40 E

2156 hill 78 1/4 East of me

Made new bearing Y Pine 4 N 15 1/2 E 38

East from NW cor Van 40 E

250 beam plowage Rich 10 N 3 1/2 W 11

5146 to Lake + set on Creek 10 S 53 1/2 W 11 1/2

Found an overrun of 881 goat lost 4265

any distance 5146 Proportions overrun

and set 1/8 P at 3407 E of cor + 1739 W of me

Y Pine stub 36 S 20 1/2 W 32

W " 51 12 S 83 E 51

South from 1/8 P on N line Van

3522 1/2 hill 27 S

hill

(88) Sec 30-39-11 Cont

South from W 1/8 P north line  
Var 2.35'

2010 3/4 set line stakes and run  
West Var 4.02

352 2 1/2 showed how hem 3407

Spring. N + S 1/8 line west at S. end

1.5 1/2 So the notes for this line read

South from W 1/8 P on N line

2010 3/4 feet 15 1/2 East of 1/16 P in NW 1/4

R. E. angle W 15 1/2 + more tally

15 ch west 12 3/4 and prolong line

South 2010 3/4 to 1/8 P West of center

Set tally 50 ch. north 3.90/100

and prolong line East to Lake

Set 1/16 P east in NW 1/4

{ Y Pin 10 N 64 E 140

{ W P Stub 16 N 41 1/2 E 60 1/2

East from 1/16 Post an corner line

100 line play at

1000 center line

1500 line "

4105 To Lake - set me

{ Birch 10 N 53 1/2 W 29 1/2

Measured west 200 feet + set Post  
for west line of lots

75  
37 1/2

(89)

SEC 19. 39-11 Jan 11 1916

North from SW cor Var 3 1/2 E

4021 feet 75 3/4 W of 1/4 P in road

West S + set 1/8 P. at 2010 1/2 + 37 + 3 1/4

East of Road }

East from W 1/4 P Var 5° W on road

9611 feet 85 S of 1/4 Post which

I set by proportional measurement bet

McCombes. found dist bet Mc

SEC 884 change course 30' Var

McCombes 10 S 22 1/2 W 32

I found dist bet McCombes 74 short

Proportional same + set 1/4 P on line 1/3 N 1/4

of me } Birch 10 S 84 W 92

North from S 1/4 P Var 4°

6437 feet 27 1/2

SEC 41 change course 2.25

SEC 410 Set center of SEC

SW N 1/4 P 9323

" S 1/4 P 3114- 20100

" E 1/4 P 4377

" W 1/4 P 15234

27085

S  
MC

(90)

149' N

See 19-39-10 Cont from 12-1916

Set 1/8 P S of center at

around S 1/4 P S 7.08 DEC Area

connecting South line 126.

near ME S 648' 3 and west 149' 2

Some is 49.97 East of NW Cor

Set 1/8 P at 3246 end

400 South of Rendon

Set 1/8 Post W of center at  
3051 and 27 N of Rendon

Set 1/8 P S line W Pin 14 N 11 E 48

1/8 P W of center } ~~line~~ Post S 16 W 38  
S 1/2 60

north from S 1/8 P W at 50 E

2015 plus 3 lines E Camp South

+ set 1/16 P in S W 1/4

W Pin 10 N 38 W 17 1/4

East from 1/16 P in S W 1/4

2463 hill 413' 0 S of 1/8 P

Set MR at 2000 ch.

2000

3114

886

(91)

	Uran 40° W	MC	200	
100	111	89	89	1
100	84	116	116	2
100	100	100	100	3
100	90	110	110	4
100	73	127	127	5
100	75	125	125	6
100	86	114	114	7
100	92	108	108	8
100	105	95	95	9
100	106	84	84	10
100	128	72	72	11
100	131	69	69	12
116.5	150	50	50	

Set

Uran 40° W

(92)

TOWN	RANGE	SECTION	PAGE
39	10 <sup>E</sup>	1	2
36	8 <sup>E</sup>	21	4
35	8 <sup>E</sup>	33	12
34	8 <sup>E</sup>	11-14	12
34	8 <sup>E</sup>	26	14
39	10 <sup>E</sup>	36	20
35	11 <sup>E</sup>	12	21
35	11 <sup>E</sup>	20	26
37	10 <sup>E</sup>	33-34	32-33
35	10 <sup>E</sup>	10-11-13	34-35-37
37	9 <sup>E</sup>	19	38
38	9 <sup>E</sup>	31-30	40-42
35	8 <sup>E</sup>	20-21	44
39	10 <sup>E</sup>	31	46
38	12 <sup>E</sup>	6	47
38	11 <sup>E</sup>	12	48
36	9 <sup>E</sup>	5	56
36	4 <sup>E</sup>	21-22	60
36	11 <sup>E</sup>	30	60
38	9 <sup>E</sup>	16	62
36	8 <sup>E</sup>	5	64
36	13 <sup>E</sup>	2	64
42	5 <sup>E</sup>	25	66
36	11 <sup>E</sup>	2	66
37	7 <sup>E</sup>	2	67

(93)

TOWN	RNGE	SECTION	PAGE
39	7 <sup>E</sup>	26	67
38	7 <sup>E</sup>	3	68
36	10 <sup>E</sup>	2-3	68-69
39	11 <sup>E</sup>	30	70
35	10 <sup>E</sup>	29	71
36	4 <sup>E</sup>	15-16-21-22	72-79
39	7 <sup>E</sup>	29-33	73-75
39	7 <sup>E</sup>	19	76
36	10 <sup>E</sup>	19	77
36	10 <sup>E</sup>	29	78
35	11 <sup>E</sup>	8	80
38	11 <sup>E</sup>	4	80
39	11 <sup>E</sup>	30	87
39	11 <sup>E</sup>	19	89



94

95

from 200 x 22' x 8 900 to center of Road  
thence N 70° ~~W~~ E

$$\textcircled{96} \quad 463 \overline{) 4325} \quad (1.75$$

$$\begin{array}{r} 2 \phantom{00} \\ \underline{2263} \\ 18620 \\ \underline{17241} \\ 13790 \\ \underline{12315} \\ 175 \\ \underline{13} \\ 525 \\ \underline{175} \\ 2275 \end{array}$$

$$\begin{array}{r} 175 \\ \underline{1600} \\ 10500 \\ \underline{175} \\ 280 \end{array}$$

$$\begin{array}{r} 18620 \\ \underline{17241} \\ 13790 \\ \underline{12315} \\ 175 \\ \underline{13} \\ 525 \\ \underline{175} \\ 2275 \end{array}$$

$$\begin{array}{r} 21000 \\ \underline{350000} \\ 700 \end{array}$$

$$950$$

$$11\frac{1}{2}$$

$$2275$$

$$\begin{array}{r} 87 \\ \underline{2025} \\ 2112 \end{array}$$

$$\begin{array}{r} 146 \\ \underline{84} \end{array}$$

$$1670 (1200$$

$$1670 \overline{) 12000} \quad (7.2$$

$$\begin{array}{r} 10200 \\ \underline{280} \end{array}$$

$$\begin{array}{r} 734 \\ \underline{62} \\ 1768 \\ \underline{4404} \\ 45408 \end{array}$$

$$\begin{array}{r} 734 \\ \underline{62} \\ 1468 \\ \underline{4404} \end{array}$$

$$\begin{array}{r} 5215 \\ \underline{884} \\ 208600 \\ \underline{41720} \\ 41720 \\ \underline{510060} \end{array}$$

$$\begin{array}{r} 1886 \\ \underline{17} \end{array}$$

$$\begin{array}{r} 1411 \\ \underline{4886} \\ 708 \\ \underline{171} \\ 808 \\ \underline{708} \end{array}$$

$$\begin{array}{r} 5650 \\ \underline{7080} \\ 1080 \\ \underline{5250} \\ 5550 \\ \underline{1830} \\ 3720 \\ \underline{1130} \\ 2590 \end{array}$$

$$\begin{array}{r} 3407 \\ \underline{3246} \\ 161 \end{array}$$

$$\begin{array}{r} 3500 \\ \underline{237} \\ 3263 \\ \underline{41} \end{array}$$

$$\begin{array}{r} 3263 \\ \underline{13052} \\ 133783 \end{array}$$

$$3114$$

$$5 \overline{) 886}$$

$$\begin{array}{r} 32 \\ \underline{41} \\ 99 \\ \underline{128} \\ 1312 \end{array}$$

$$\begin{array}{r} 3263 \\ \underline{13052} \\ 133783 \end{array}$$

$$\begin{array}{r} 4000 \\ \underline{2100} \\ 2100 \\ \underline{3114} \\ 446 \end{array}$$

$$5146$$

$$\begin{array}{r} 126 \\ \underline{30876} \end{array}$$

$$\begin{array}{r} 10292 \\ \underline{5146} \end{array}$$

$$648396$$

$$\begin{array}{r} 5146 \\ \underline{149} \\ 4997 \end{array}$$

$$\begin{array}{r} 57567800 \\ \underline{1214} \end{array}$$

$$\begin{array}{r} 22600 \\ \underline{11300} \\ 5650 \\ \underline{10000} \end{array}$$

(97)

98 10) 15000 (745 <sup>390</sup> 32432) 27000 (78  
 12070 15 26 2640 24024 5  
 9300 3725 29760 390  
 8040 245 27456  
 267 1260 12175 2708

4105 37-39 28421 4821 91  
 66 66 21265 83  
 246 102 1921 536 8  
 246 102 1843 78  
 2708 1122 78  
 26 1148

1921 78 750 42 252  
 15368 13447  
 1921) 152838 (8 5146  
 7809 272 573 816  
 1904 1360 1904  
 1360 155856 (2, 42 252  
 12874 27176 2574 1368

573 85 573 85  
 2865 4384 48705  
 6437) 27175 (41 272 573 816  
 26548 6270 1716 4004 2866 327756 (51  
 572 573 1716 4004 2866 327756 (51  
 6437) 327756 (51 5132 884 20528  
 6000 41056 45436288

9611) 85000 (884 573 85  
 76888 52865 4384 48705  
 81120 42320 36444  
 76888 36444  
 42320 6437) 27175 (41 272 573 816  
 36444 6270 1716 4004 2866 327756 (51  
 9611) 48705 (5, 07 572 573 1716 4004 2866 327756 (51  
 48055 5132 884 20528  
 5132 884 20528  
 41056 45436288

	W	T	f	S	S	T	T	S	S	S
Lynn W	1	1	1	1						
Chas W	1	1	1	1	1	1	1	1		
Korzilios		1	1	1	1	3/4	1	1	1	✓
"		1	1	1	1	3/4				✓
Berg					1	1		1	1	4 ✓
Nelson					1	1	3/4	1	1	7 ✓
Nelson								1	1	3 ✓
DHU	1	1	1	1	1	1	1	1	1	

DHU  
 Nelson  
 Korzilios

Lynn Vaughan 4 days 1000  
 Charles Maner 10 1/2 days 2625  
 John Berg 4 " 1000  
 James Nelson 7 " 1750  
 Archie " 3 " 750  
 Frank Korzilios 15 km 3750  
 and his father }

100

Jan 5-1916

Kuehke + Collins

- 3 fares to 3 Lakes 1 892
- copy of Govt notes 50
- Paid Hotel at 3 Lakes 4 50
- Phone to Three Lakes and Berge 25v
- Phone to Three Lakes and Berge 25v
- Plane from Nelson to Berge 262
- 5 dinners at Nelsons 1 25
- Plane to Kuzilow 2 50
- " " Antigo 66v
- 3 fares to Rhineland 2 28
- 6 meals at Momo 2 10
- Team to clear water 1 00
- Team from Kuzilow 2 00

2794  
 12500  
 15294  
 25  
 17794

5250  
 2625

00  
 20  
 25  
 12  
 12500  
 115000

44  
 39  
 27  
 2794

5146  
 3487  
 1739

881  
 311

5146  
 4265  
 881

101

5700  
 4500  
 12286

7786  
 4500  
 12286

12646  
 12286

12646  
 12286

354  
 130  
 224

4630  
 587  
 52410  
 7040  
 23150  
 2717810

129  
 15930  
 12286

36440  
 24572  
 118680  
 574

4630  
 12646  
 4630  
 8010

7786  
 224  
 8010

130  
 4630  
 864  
 381  
 1245

166  
 40124  
 13144

590  
 419  
 5310  
 2360  
 88910  
 9646

7784  
 8027  
 7786  
 241  
 4000  
 964000  
 7786  
 18540  
 15572  
 2968

3380  
 590  
 302400  
 129000  
 1992400  
 9

211516000  
 14265  
 185

7750  
 3750  
 6200  
 377100



102

8000 204  
204 8000  
32000 163200

204  
93  
101

7907  
3953%

17533) 1632000(93  
157500 +  
57000

17533) 163200(93  
155797

59003 52330  
52599

9533  
9422

1735

17533

114000  
444000 (46  
38132 92

626400  
57198  
5482

757  
35

11860  
757

757  
76

757  
72

3745  
2271

83020  
59300

4542  
5299

1514  
5299

26495

83020  
8978020

57.532

53504

8600

573

543

1719

2292

2865

9783

489.2

4044

8600) 301139(3.62  
25800  
53139

51600

15390

103

19  
76  
104  
133

7632) 14630(1915  
7632

69940  
68688

12920

7632

52880  
992

1463

573

4389

10241

7315

838299

8132

7632

500

7632) 838299(10.90  
7632

75099  
64688

84110

60

5400

4000

246

3754

1879

5637

4000  
500

7907 8132) 2000000(2.46  
76284

37360

32528

47820

17296) 131000(7.57

121072

912800

6480

104

2425  
2388

4317  
3683

5612  
4317  
1295

522  
2425  
2400  
1295

5612  
2388  
4317  
2398  
1919  
4317  
2425  
690  
3105

1295  
317  
7250

11165  
11400  
11165

102  
11400  
11165

Goat say it is 2388 from SE ear to me  
my " " 2425 " " " " " "

Goat say it is 1919 from me to me.  
more " " 2800 8040

Goat water say it 317 from W me to

1919  
317  
1592  
1081  
1592  
1273.6  
1592

2031  
4062  
2071.62  
1592

23500  
22330  
11700

8040  
91200  
8040

573  
912  
6876

1919  
1720952  
17171

902  
690

11165  
81210  
3025  
8140  
7250  
890

817  
921  
1738  
890  
848

817  
848  
6536  
3268  
6536  
1738  
6528  
1642

3750  
7750

8040  
17660  
16089  
15200

8040  
522576  
48240  
40170  
40200

5225  
102  
10450  
5225  
532950

921  
817  
400  
417

921  
7250  
102  
14500  
7250  
739500

3754000

290  
7750  
1160000  
7750

41.50  
1122  
8300  
8300  
4150  
4150

630  
330  
300  
38500  
31000  
75000  
69750

573  
114

6450  
6460  
590

2292  
573  
573  
11165  
653  
558  
22  
25

94970  
89320

7250  
102  
14500  
7250  
739500  
5400  
3400  
3300  
5900  
1600  
430

4150  
4150  
4656800

52500  
52250  
2500

4367

5300  
43

1160  
590  
104400  
5800

6460  
6460  
6460  
6460

44  
401100  
401100

105

106

A L Gettys 511 City Hall Chicago Ill.  
 Nov 23. 3 fares to Tamahawk Lake 1.08  
 " " copy of 9 out 2 field notes for 8/29 .75  
 " 27 Copy of 13 ans notes of 28+33 2.00  
 " 29 Paid for messes 1.00  
 " 30 " " " 1.00  
 " " 3 fares to Rhineland 1.08  
 5 days Surveying 25.00  
 Paid 2 assistants 25.00

Nov 30 1915 56.86

from Grundy  
 3 meals at Grinnell 1.50  
 3 fares to Rhineland 2.25  
 1 day Surveying 5.00  
 Paid Sheep 2.50  
 " Lytle 2.50  
 \$13.75

2332  
 2372  
 8089  
 8089  
 2041  
 2041  
 2014  
 26935  
 3939  
 8030874(3)  
 4160  
 8035084(4)  
 3208  
 5964

2100  
1850  
1050

107

East from S 1/4 P W line P. Comp  
 2 tulleys + 100 steps interest lake  
 then N 2 tulleys + 100 steps  
 " East 1 tully but do not reach  
 high land

Point NO 1 is 150 steps east of 1/8 Part  
 and 4 tends to lake at 2. Tit + 100 steps

West side of Point NO 2 is 4 1/2 tulleys  
 East, and 2 tulleys north ~~there~~  
 of lake. So south Point of Point 1  
 on shore of lake is 4 1/2 East  
 + 2 1/2 north of 1/4 P

D. H. Vaughan	5.00	1/2	1	1	1	5	1/2	5
T. Shell	2.50	1/2	1	1	1	5	1/2	5
A. J. Lytle	2.50	1/2	1	1	1	3	1/2	5
Clair Sanders	2.00	1/2	1	1	1	5	1/2	1/2
coffin	2.00		1	1	2	5	1/2	1/2
Roy Montgin	2.00		1	1	1	5	1/2	1/2

23 25 27 29 31 33  
 1/2 1 1/2 1/2

108

Darius notes for 30-38-9.

West from NE Cor: Van 5<sup>00</sup> East Van 8 1/2 E  
21080 hill 247 N of 1/4 P cement UCB 18 1/2 E

South from NE corner Van 420

7974 hill 80 E of SE cor. West N + set 1/4 P  
Tans 6 S 83 1/2 W 13  
Tans 6 N 86 E 50 1/2

West from E 1/4 P Van 7<sup>00</sup>

9698 hill 118 S of W 1/4 P cement Van 620 N 85

South from N 1/4 Part Van 5<sup>00</sup>

7720 hill 738 E of 1/4 P cement Van 130

West from SE cor Van 7<sup>00</sup>

9697 hill 360 S of cor. cement Van 58  
Set 1/4 P at 47.38 W of SE cor +  
49.59 E " SW "

North from SW cor Van 5 1/2 E

6283 hill 166 W of MC. cement Van 4<sup>00</sup>  
Set 1/4 P at 36.95. Sp 2 1/2 N 89 1/2 E 41 1/2  
" 4 S 76 1/2 W 22

Dist to E 1/4 P 4390 S 1/4 P cedar 8 N 71 W 15  
" " W 1/4 P 54157 cedar 2 S 43 1/2 W 26  
" " N 1/4 P 3833 center WPine 30 N 89 1/2 E 276  
" " S 1/4 P 3897 1/8 P Sall  
of =

109

course of West 1/8 line of 30-245 E  
" " E + W 1/4 " " 6.20 E  
" " N + S 1/4 " " 1.30 E  
" " South " " 5.00 E

795  
200  
4186 / 1590 00 (3.80)  
12558  
33420 795

4186 / 1737870 (4.15)  
16744

6347  
4156  
21610  
20930  
2601

4981  
4186  
795

10930  
17077  
15

9697 573  
360  
34380  
1719  
9697 / 206280 (214)  
19394  
123400  
9697  
3643



110

Expense in Surveying 12.35 - 11-E	
Apr 20 filing application	25
" " notice of Publication	100
" 25 Paid for " + Postage	345
" " notice to residents of S.E. 12	80
NENE Surveying	910
NWNE	910
SWNE	910
SENE	910
NENW	910
NWNW	910
SWNW	910
SENW	910
NE SW	910
NW SW	910
SW SW	910
SE SW	910
NE SE	910
NW SE	910
SW SE	910
SE SE	910
RR fee and board self + assent	1984

112

T. J. Dodds.  
W. J. Simmons  
E. J. Williams  
J. M. Harris  
J. L. Hall  
J. O. Harris  
J. W. Williams  
D. H. Vaughan  
T. H. Shep

NE SE  
SE, NE  
SE SE  
SW, SE  
SWNW SWNE  
SE, NW  
NENE  
NW

West from center of Sec 6 - 37-9  
W on 3/2 E

219 Intersect Lake  
1367 feet 7.5 of 1/4 P  
W on E 16

land on corner of 173 Portland  
more west 1/8 P 2642 1/2

marked U.H.A

South from W 1/8 P on N line 4  
W on 3 1/2  
3491 feet 65 E



114

123028

See 21-268

See 20-368

M E S E	4000	2665	Lot 5	4185	2524
M U S E	4000	2921			
S W S E	4000	3054			
S E S W	4000	3374			
S W S W	4000	3686			

got actual

Town of Harrison

2 fares to Harrison & return

2 meals @ 27 50

2 " " @ 35 70

Paid for board at Harrison 800

" " helpers & teams " 800

" " 5 " at Elmcity 1200

" " Board & team " 800

" " Deerings son helper 400

" " O J Lytle 1750

Self 7 days Surveying 3500

522	552
35	25
2610	522
1566	25
18270	2610
	1704
	1044
	13050

7830

65.2  
0.2.6

1235	1235
35	2025
6175	6175
3905	2460
53225	2470
	250075

5457	1142
4315	
8507	

3522
3407
15

2082
16
13312

5457

8-111

140	780	140	1920
-----	-----	-----	------