

B.F. DORR # 23

B.F. DORR

~~#5~~

#23

Book no 5.

Sec 19 Town 39 N. Range 9. E. 1. 3.

			19.95
		38.82	
			(-3 3/4)
36.14		24.69	20.37
			20.20
		3 1/4	27.5
			22.41
			210.65 1/2

Form 7.

H. Niedecken Co., Milwaukee (8 3/4)

E. 1/4 on S. line, 11 S. 44 1/2 N. 22  
 beam, Sec Pine 10 N. 69 3/4 N. 21  
 5- Do. 10 S. 15 E. 35 1/2  
 1/8 bet. E. 1/4 Pine 13 N. 39 1/2 E. 15  
 S. 1/4 on E. line, 12 N. 63 E. 20

2.

Sec 30 Town 39 N Range 9 E

		9° 30'	20,55 1/2
		11,82 1/2	12,30
		8 3/4	10,76
			20,77
36,54 in 99			20,77
40,69 1/2	20,77	19,75 1/2	7 1/4
		15,00 to top	5 1/2
			19,96
			19,61

Form 7. 40,936. H. Niedecken Co., Milwaukee.

Sec 30. Pine 30. S. 24 E. 13 1/2  
 To 20 S. 75 E. 20 1/2  
 1/8 bet. E. 1/4 Pine 30 N. 77 1/2 W. 10  
 " " S. 1/4 " 9 N. 35 W. 21  
 E. 1/8 on S. line Pine 30 S. 32 1/2 W. 15 1/4

40,69 + 36,54 = 20  
 20 20,00  
 72,690 (17,53  
 40,69 2,17  
 31,990  
 28,483  
 35,070  
 32,552  
 12,518

40,48  
 40,93  
 2/9,134  
 40,69

Sec 10. Town 38 N Range 7 E

			19,72
	41,44	3 1/2	
20,23		19,70 1/2	19,96
47,10'			
20,10			19,96
	19,97		
		19,86	
			39,54
	19,83		
	36,80	20,30	36,18
19,52			20,00

Form 7. 35,57. H. Niedecken Co., Milwaukee.

1. Mile. E. side N. E. tree burnt off  
 " " " " S. E. lying down, notes OK  
 2. " " W. " N. E. tree O.K. notes N. 38 E.  
 33 lbs. was N. 39 W. 10 lbs.  
 S. W. tree O.K. notes S. 82 W. 70 lbs.  
 was S. 72 W. 32 lbs.  
 South line of 10. 80,80  
 1/2 mi. " " " 40,40  
 S. E. cor. to E. m. l. 36,18  
 E. m. l. " S. 1/4 P. 4,22  
 Dist. across. 7,82  
 My Dist. 7,77  
 " " from E. m. l. to 1/4 P. 4,19 1/2  
 West Dist. from N. m. l. " S. W. cor. 36,82

4.

Sec 16

Town

37 N. Range

9 E.

19.42 1/2 20.98 9 3/4 19.20 + 1/2 + 1/4	20.54 1/2 + 40 20.54 1/2 1/2		20.50 1/2
	18.77 1/4 ±		

Form 7.

H. Niedecken Co., Milwaukee.

5.

Sec 19

Town

37 N. Range

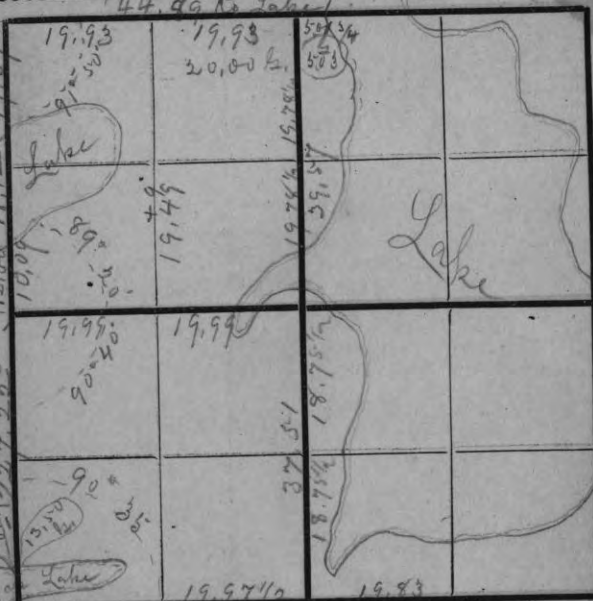
9 E.

		19.71 1/2	
		39.63	
	42.07	R. 10-20	41.01 - (1 1/2)
20.52	20.00	R. 5-84 94	20.02 1/2 R. 2 1/2
	± 4-35 48 20.52 1/2 6 3/4 +	21.07 1/2	
21.4 1/2	21.23 (3-40)	21.10 1/2 R. 10 1/2	41.63

Form 7.

H. Niedecken Co., Milwaukee.

Sec 16 Town 35 N Range 8 E



Form 7. 39.95 H. Niedecken Co., Milwaukee

Dec. 2.  
 22.28 39.77  
 27.52 21.41 1/2  
 49.78 17.35 1/2  
 27.25  
 45.60

Sec 2 Town 36 N Range 8 E

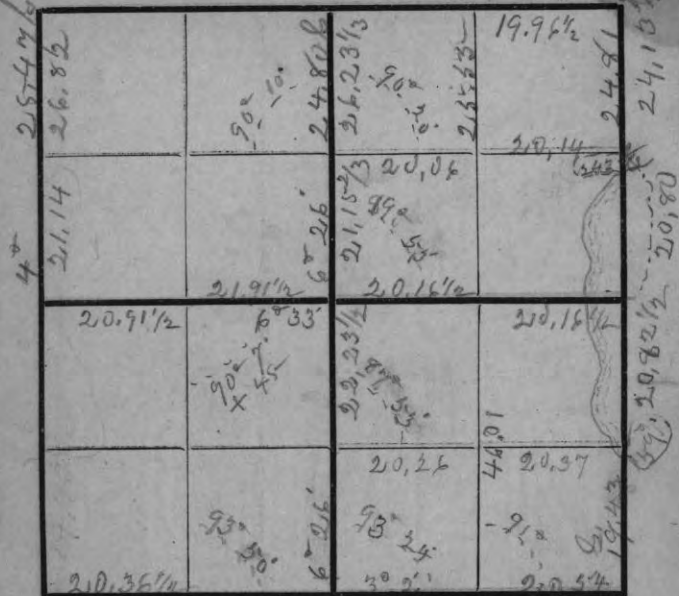


Form 7. 29.79 H. Niedecken Co., Milwaukee

The E. shore of the Lake is on  
 ly 3.90 East of N. 1/4 Post  
 ab. to b. N. 39 E. 11.31 = N. 8.77 + E. 7.12  
 b. " c. S. 64 1/2 E. 2.60 = S. 11.19 + E. 23.47  
 8.79 20.80 E. 5.17 6.35  
 7.12 " 38 5.55  
 2.44 12.88 " = 5 35 5.55  
 6.35 N. of 1/2 line. Lake strikes  
 N. 1/2 line 80 links North of center N. E. 1/4  
 38.20 : 39.77 :: 57 : 7.20 :: 11  
 27839  
 19888  
 226489 (39 1/2)  
 1910  
 3868  
 3438  
 1300  
 18.09 + 2.81 = 20.90  
 Across Line Lake

8.

Sec 3 Town 36 N. Range 8 E.

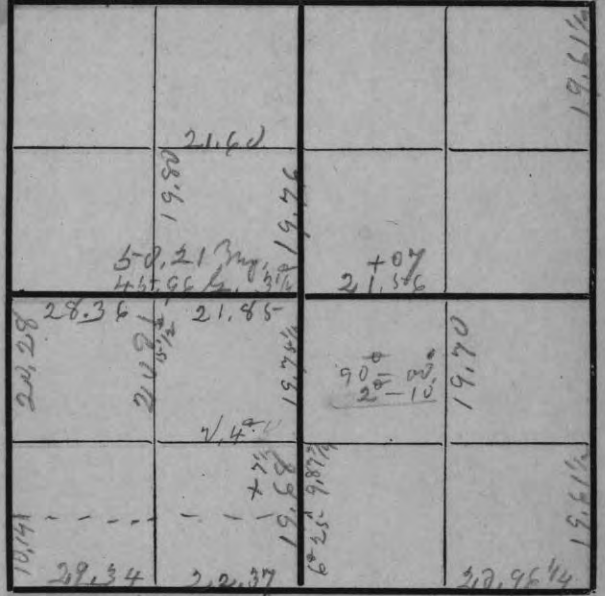


Form 7. 37 22 H. Niedecken Co., Milwaukee.

91.86 | 48.06 | 21.16 | 22.23 1/2 | 25.47  
 44.47 | 21.14 | 20.80 | 20.82 1/2 | 24.13  
 47.39 | 26.82 | .36 | 1.41 | 49.60  
 44.80 : 47.39 :: 20 | 20.54 | 24.80  
 20 | 20.16 | 38  
 44.47 | 94780 (21156) | 82.16  
 21.16 | 4960 | 40.33  
 65.63 | 5180 | 241.83  
 325 | 4480 | 20.91 1/2  
 32815 | 7000 | 40.33  
 13124 | 4480 | 61.248  
 164075 | 23200 | .04308  
 22400 | 2800 | 489920  
 2800 | 183735  
 July 13 N. dem | 244980  
 63 N. + 164 N. | 26384346  
 Fall 12. E. + N. |  
 1244 1/2 N. + 264 3/4 |

Feb. 13 1896

Sec 30 Town 32 N. Range 11 E. 9.



Form 7. 46.23 51.71 H. Niedecken Co., Milwaukee.

46.23 : 51.71 :: 20 : 8.12 1/4 + 45.69  
 20 | 8.5 1/4 | 46.23  
 103420 (22.37) | 8.24 1/2 | 45.96  
 9246 | + 8.10 3/4 | 45.96  
 10560 | 39.14 | 10.14  
 9246 | 17140 | 9.86  
 13869 | 32710 | 26  
 32361  
 45.96 : 50.21 :: 20 | 20 |  
 100420 (21.85) | 9500 |  
 9192 | 4596 |  
 9500 | 39040 |  
 4596 | 26768 |  
 2272



Form 7. H. Niedecken Co., Milwaukee.  
 89, 316 19. 26.50 39.04  
 88, 78 N. line 19.

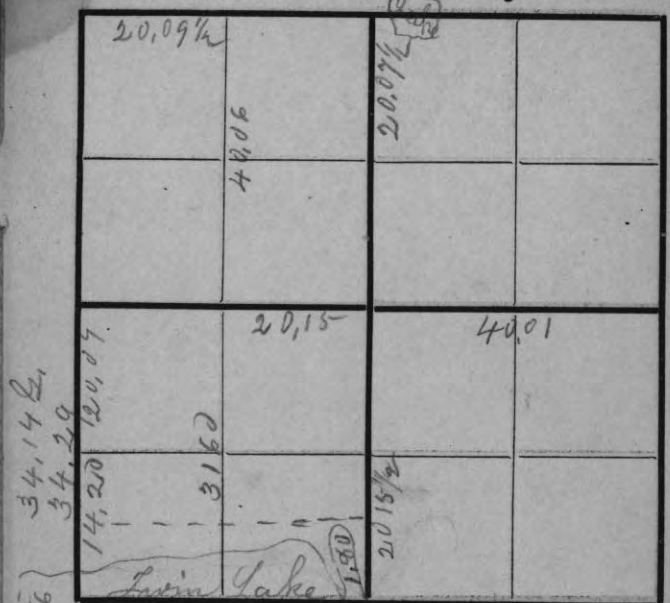
$38.38 : 37.54 :: 26.50$

$$\begin{array}{r} 37.54 \\ \times 26.50 \\ \hline 187700 \\ 22524 \\ 7508 \\ \hline 99481.00 \\ 17676 \\ \hline 22731 \\ 19490 \\ \hline 35310 \\ 04342 \\ \hline 7640 \end{array}$$

49.40  
15.40  
34.00

48.79  
49.40  
13.21  
15.21

38.38  
11.88  
26.50



Form 7. H. Niedecken Co., Milwaukee.

$41.80 : 41.90 :: 1.80$

$$\begin{array}{r} 180 \\ 335-200 \\ 419 \\ 784200 (1804) \\ 4180 \\ 33620 \\ 33440 \\ \hline 18000 \\ 26720 \\ \hline 1280 \end{array}$$

14.

Sec

4

Town

36

Range

9

S. 41.25

		41.15 1/2 41.15 1/2 41.15 1/2 41.15 1/2	
		20.80	20.45
		20.80	20.80
		20.17	20.50
			20.50

N. 30° 47' N 19 1/2' W, 32' - 41.10, 42.60 my measurement

Form 7. H. Niedecken Co., Milwaukee.

15.

Sec

17

Town

36

Range

9

S. 41.25

		23.07	
		22.26	
		21.34 1/2	21.31
		21.4 1/2 - 1/2	
		20.48	20.48
		21.80	21.03
		20.45 1/2	20.45 1/2

Form 7. H. Niedecken Co., Milwaukee.



29.568	19.60	19.93 3/4	19.87 1/2
20.41 1/2	48.82 1/2	19.92	20.03 1/2
20.41 1/2	48.82 1/2	18.61	19.87 1/2
20.41 1/2	48.82 1/2	5-4, 72 L.	5-4, 92 S. 1/2
20.41 1/2	48.82 1/2	18.61	33.31

Form 7. H. Niedecken Co., Milwaukee.

54.96  
54.48  
109.44  
54.72

40.82  
18.61  
5943 - 3  
03553 - 7  
17829  
29715  
29715  
17829  
21115479

91.74  
40.82  
50.92

79.87  
39.87  
39.20

118 feet, N. 1/4 & July  
12.57 S. + 2.11 E.  
N. 1/8 on E. line  
3 1/2 N. & 20 W.

5-4.72; 50.92; 11.20  
20  
10187018.61  
3472  
47120  
43776  
33440  
32832  
6080

Billy's center is  
38 lbs W side of mine +  
19 N. 1/4, 1/4, 1/4 E, 1/4 S  
50 E. of mine + 1.10 N. & E.

20.05	41.00	20.73	20.09
20.05	41.00	20.73	20.09
20.05	41.00	20.73	20.09
20.05	41.00	20.73	20.09

Form 7. H. Niedecken Co., Milwaukee.

40.40 + 40.90 = 42.20  
41.30 + 40.90 = 42.20  
40.40  
40.89  
81.29  
40.645

40.4 : 41.3 :: 20.4  
204  
1652  
826

404) 84252 (20.85  
808  
3452  
2232  
2250

74.26  
38.29  
35.98  
17.99  
56.27  
01859  
50643  
28138  
45016  
55226  
10420593

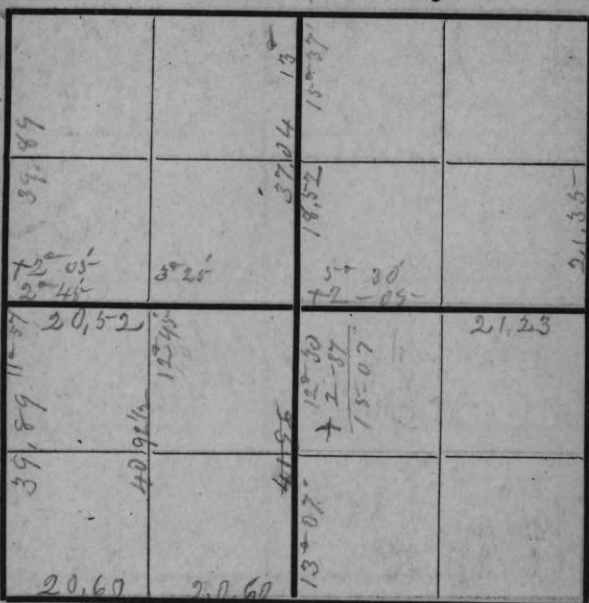
Sec. 1, 34 - 6.  
Billy Allen's N. 1/8 on E. Line is  
60 links N. of mine  
" " 1/8 link N. 1/4 is  
110 links E. of mine  
" " open N. 1/4, 1/4 is  
30 links E. of mine



Form 7.

H. Niedecken Co., Milwaukee

After I had finished on 36. I found that in some way there was a mistake of 10 links in the offset or variation at the S. end of E. line, 35, Od, 20/1894. Found no E. or N. 1/4 Post.



Form 7.

H. Niedecken Co., Milwaukee

Found no West 1/4 Post.

20.

Sec 12 Town 37 Range 9

19.57	39.00	19.95	39.00
			X
			4 1/4
		X	10 5/8
	19.15 1/2		19.27
3/4 +			3 3/4 + 18
	19.84	3 1/2	X
	R. 12 1/2	+ 15	+ 20
		5 1/2 16'	19.28 1/2
19.57	1 25'	X	0
		X	
19.30 1/2			19.30 1/2

Form 7. H. Niedecken Co., Milwaukee.

21.15 1/2  
 .0365  
 105.725  
 126.935  
 634.65  
 772.1875  
 Tally 47  
 on E + W 1/4  
 line Sec 9.  
 1.15 1/2 W.  
 + 77.2 N.

Sec 9 Town 36 Range 9

21.07	L		22.18 1/2
		84.26	2.6 1/2
			36
21.02 1/2	L	6 10'	21.15 1/2
	L		
21.10			21.23
			21.23
21.07			21.23
		21.44 1/2	
		42 84	
		4 40'	
		30	
			21.23

Form 7.

H. Niedecken Co., Milwaukee.

4° 00'  
 2° 50'  
 = 45° = 2° 5' + 45'

Lake at N.W. cor. is only about  
 1/2 as wide N + S, as found to be.  
 Did not find imp. on S. side  
 and disregarded it.

Did not find W. 1/4 P.  
 38.33: :: 19.90:

84.36 (S. 1/4 on E. line)  
 42.31  
 2) 42.05  
 21.025  
 42.31  
 63.335  
 0.365  
 31.6675  
 380.010  
 1900.05  
 2311.7275

Tally 12 on  
 E + W 1/4 line  
 3.33 1/2 W.  
 2.31 1/4 N

1/8 bud.  
 S. 1/4  
 N. 1, 44 1/2  
 E. 40 1/2  
 2, 144 1/2  
 188  
 171.540  
 171.540  
 21.44 1/2  
 40.31

97.25  
 42.89  
 2) 44.37  
 22.18 1/2  
 65.0735  
 188  
 420.800  
 1123.600  
 650.75  
 1,223.4100  
 Tally 13.  
 7 1/2 N. +  
 1,223.36.

Sec 6 Town 37 Range 10

20.86 17.17 1/2 21.05	20.45 17.62 20.74 19.92 1/2 20.19 42.48 40.13	18.00 37.62 b. 2 1/2 39.44 20.60 39.14 20.74	2 1/4 20.45 20.59 20.74 20.74
20.99 21.31 21.17	21.15 21.17 +	21.15 -(2° 5')	21.15 21.15

Form 7. 39.86 1/2. H. Niedecken Co., Milwaukee.

39.86  
40.40  
37.24  
40.13  
17.17 1/2  
17.62  
85.875  
120.225  
343.50  
472.3125  
47 1/4 W.  
2.17 1/2 S.  
47 1/4 W.  
37.62 : 39.44 :: 17.62  
17.62  
76.88  
250.84  
269.08  
394.4  
674.3129

37.10 :: 17.24  
371  
17.24  
120.58  
57.72  
639.604 (17.17 1/2)  
37.24  
2.83 1/2  
26.720  
260.68  
65.20  
37.24  
279.60  
260.68  
57.62 : 67.73 : 29 (18.00)  
37.62  
50.11  
300.56  
0001.520

Sec 5 Town 37 Range 10

			19.46
19.10			16.91 1/2
17.93			17.93

Form 7. + 28'. H. Niedecken Co., Milwaukee.

37.5 : 39.12 :: 20.  
20  
742.40 (20.64 1/3)  
75.8  
2440  
2274  
1250  
1516  
144

37.5 : 39.12 :: 20.  
20  
742.40 (20.64 1/3)  
75.8  
2440  
2274  
1250  
1516  
144

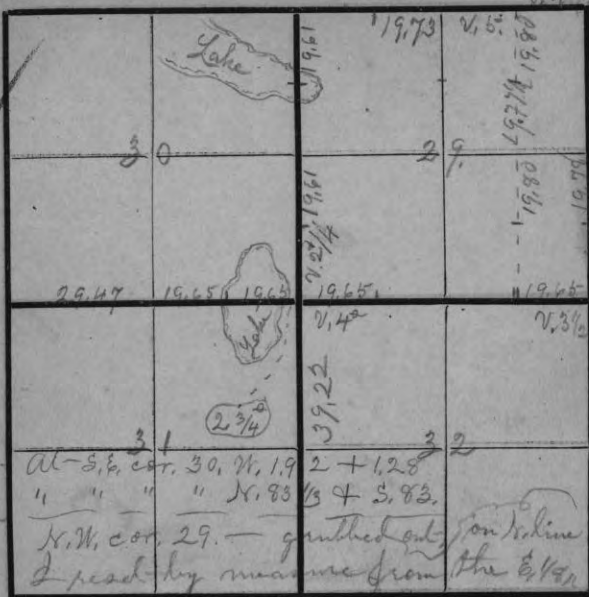
29.26  
40.60  
20.64  
61.24  
18.52

Sec. 6, N. 1/2 E, + N. 1/4 line  
40.13 : 42.48 :: 20.13  
20.13  
127.44  
42.48  
84.96  
40.13 : 85.51 : 22.4 (21.31)  
80.26  
52.52  
40.13  
123.92  
120.39  
3534

21.31  
07.27  
149.17  
42.62  
149.17  
1549.237  
Tally 4, 1.31 E. + 1.55 South

24. 29, 30 ✓

Sec 31+32 Town 36 Range 8



Form 7.

H. Niedecken Co., Milwaukee.

June 15<sup>th</sup> 1898.  
 Did not find any 1/4 rods  
 inside of these sections.  
 Did not find the South cor-  
 ners of Section 29. or the  
 M. P. on W. line of 29.  
 Lake bet. 30+31 is about 16.00 ds  
 across the water is not called  
 S. W. cor. of 29, is on the random  
 Charles Rutherford found S. E.  
 corner of 31.  
 As there were no meander corners  
 on the <sup>lake</sup> bet. 29+30, I concluded  
 to divide the 2 miles, regardless of the lake

26.

Sec 21 Town 39 Range 7



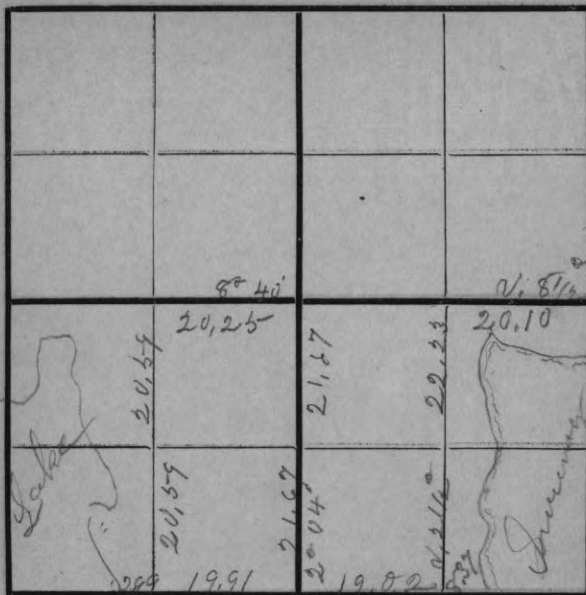
Form 7.

H. Niedecken Co., Milwaukee.

Nov. 1898.  
 I hardly know how to survey  
 this section. The plan  
 adopted harmonizes the "calls"  
 courses and distances.  
 Did not find W. 1/4 P.

26.

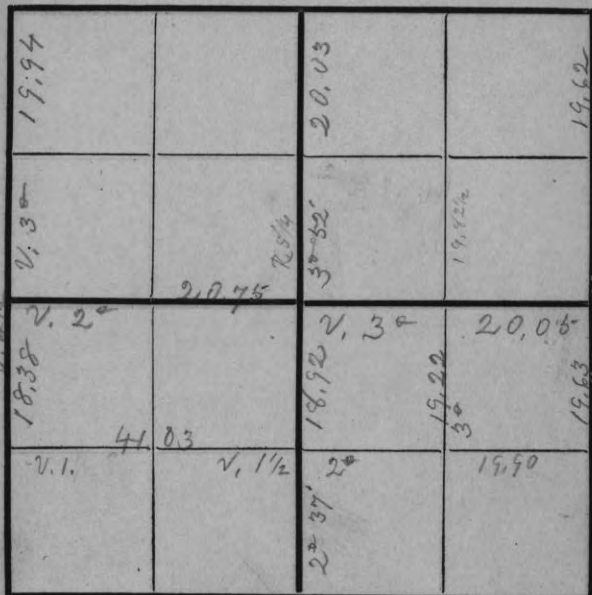
Sec 15 Town 39 Range 7



Form 7.

H. Niedecken Co., Milwaukee.

Sec 32 Town 38 Range 10



Form 7.

H. Niedecken Co., Milwaukee.

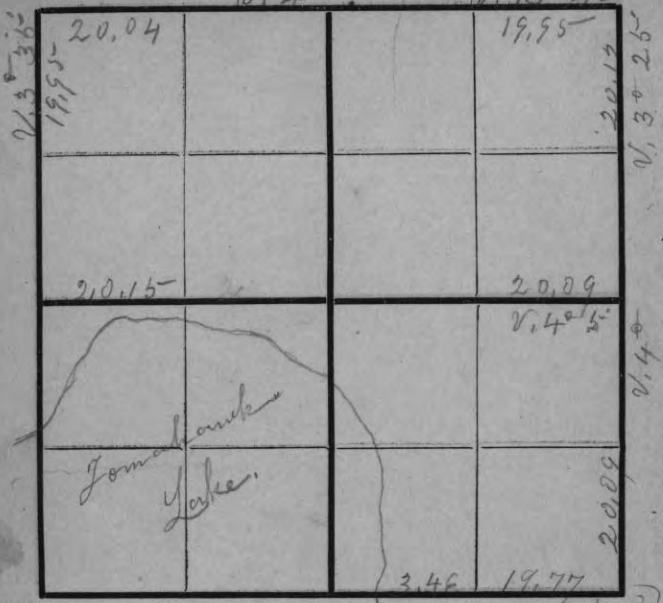
77.90  
37.84  
 240.06  
20.03  
 57.87  
 2.13

57.87  
2426  
 34722  
 11574  
 23148  
 11574  
 14639262  
 July 12  
 N. # S, 114 line  
 2.13 S.  
 1.40 1/3 E.

81.60  
4150  
 240.10  
20.03  
 61.55  
 02487  
 43085  
 49240  
 24620  
 12510  
 1,5307495  
 E. # W, 114 line  
 1.55 E.  
 1.55 N.

28.

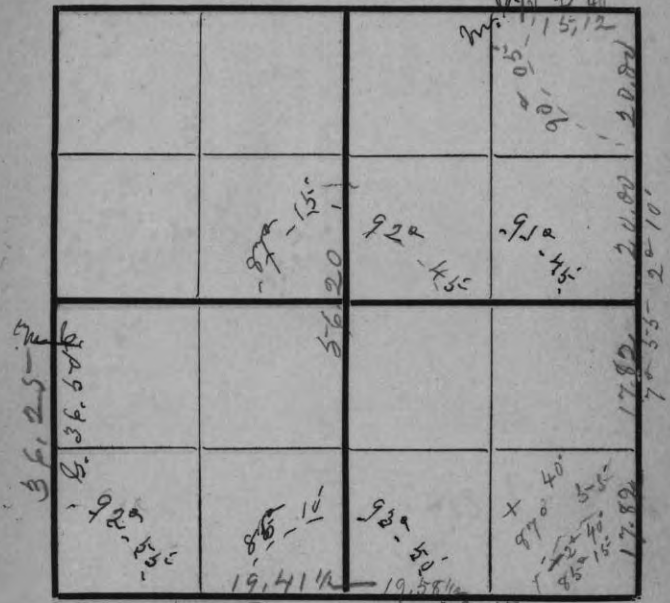
Sec 29 Town 39 Range 17



Form 7. H. Niedecken Co., Milwaukee

Run from N. E. cor. to S. E. cor.  
to get course of E. line.  
Run from N. W. cor. to N. 1/4  
post to get course of W. line  
Then set N. 1/4 P. was 19 1/2 lbs  
E. of middle of N. line, &  
set center 9 1/2 lbs. E. of mid-  
dle of E. & W. 1/4 line - meas-  
uring from E. line as above  
found to N. 1/4 P.  
I could not find M. k. at  
S. end of W. line, and  
so had to use N. 1/4 P.

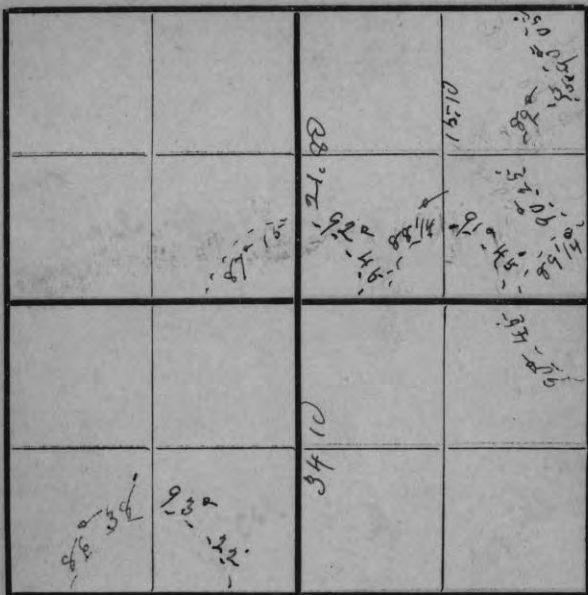
Sec 10 Town 34 Range 10



Form 7. 38.83 H. Niedecken Co., Milwaukee

Angles on E. line were taken from a  
line run from the N. E. cor. thro. the  
E. 1/4 P. to the random run from the  
S. E. cor. to a point 90 lbs N. of S. W. cor.  
Angle 92° 55' is between  
W. line and random on S.  
line.  
Angle from N. E. cor. to S. E.  
cor. is 2° 41' more than  
from N. E. cor. to E. 1/4 P.  
E. 1/2 of S. line is 34 lbs  
longer than W. 1/2.  
Think E. 1/4 P. was set by  
running from N. E. cor. S. 1/2 mile

Sec 10 Town 34 Range 10



Form 7.

H. Niedecken Co., Milwaukee.

Line from N. E. cor. to S. E. cor.  
runs 11.872 East of E. 1/4 P.

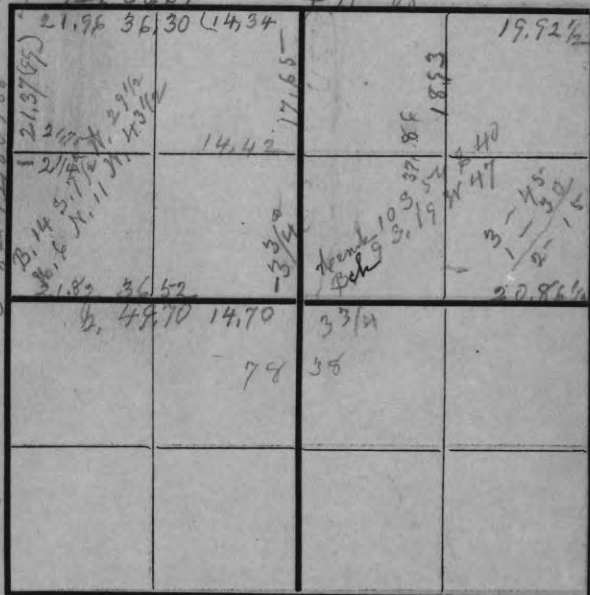
Run a line from E. 1/4 P.  
to a point 3.50 N. of M. S.  
on W. line by request of  
Mr. Goodrich. It runs 14  
N. of my 1/4 line.

S. 1/4 P. is 74 lbs. N. of a  
straight line from S. E. to S. W.  
cor.

Angles on the S. line were  
taken from the Random running  
from S. E. corner.

See large map of this section.

Sec 17 Town 34 Range 11



Form 7, 48.76

H. Niedecken Co., Milwaukee.

From N. W. cor. N. on N. line  
of 12. it is 25.42 to 1/8 cor.



32.

Sec 19 Town 35 Range 9

			X
	40.97	X	X
41, 475 <sup>th</sup> 38.82		40.61 3/4 <sup>th</sup>	
22.84 20.32	18.50	20.02	20.30 1/2
38.27	18.22		X
6 3/4	6 1/2		
X	X	X	
37.98 1/2			
19.94	16.05		19.60 1/2

10<sup>th</sup> Form 7. 42.10

H. Niedecken Co., Milwaukee.

33.

Sec 6 Town 35 Range 10

	37.31		
-35'		39.50	
24.90	15.90		
20.63	15.46		
22.83	15.01 1/2		

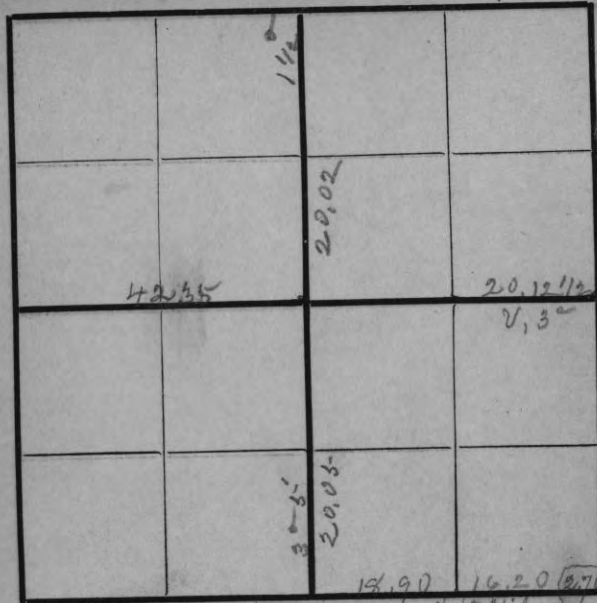
Form 7

H. Niedecken Co., Milwaukee.

45.52  
45.52  
45.52  
45.52  
45.52

34.

Sec 18 Town 41 Range 9

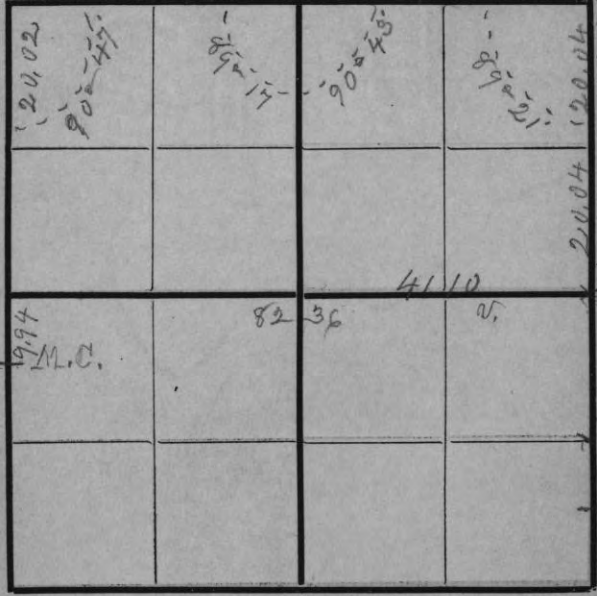


Form 7. H. Niedecken Co., Milwaukee

77  
10 30  
9.74  
11.6 4 5

35.

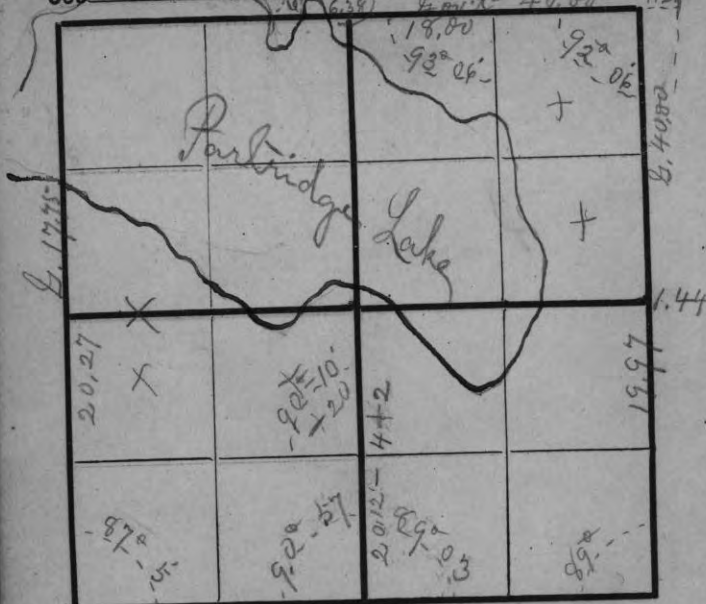
Sec 33 Town 39 Range 7



Form 7. H. Niedecken Co., Milwaukee

6 54 1/2

	49.98	68.25	81.24
N.E. cor	40.04	40.09	40.43
	9.94	28.16	40.81
	90° 47'		
	89° 21'		
	31° 26'		
	43'		
N.W. cor	91° 10'		
	+ 30'		
	91° 40'		
	53'		
	90° 47'		



Form 7. H. Niedecken Co., Milwaukee.

Angle bet. Randoms at N.E. cor.  $90^{\circ} 50'$   
" S.E. "  $89^{\circ} 55'$

$E. \frac{1}{4} P. " 1.44 E. "$  of line from S.E. to N.E. cor.  
The angles on the S. line are  $89^{\circ} 00'$   
Taken from my random from  $87^{\circ} 45'$   
the S.E. cor.  $21^{\circ} 55'$

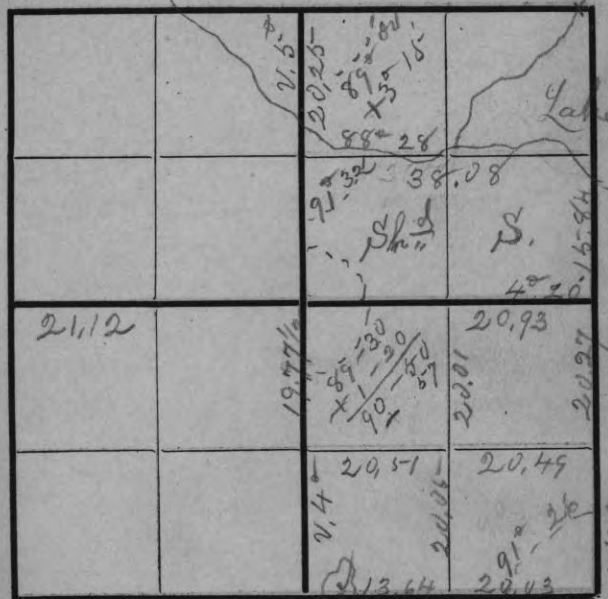
$90 - 50$	$90^{\circ} 57'$
$1 + 13$	$90^{\circ} 57'$
$92 - 03$ Bet. true N. line &	$90 - 25$
Random E. "	$15$
$89^{\circ} 55'$	$90 - 10$

$89 - 20$  Bet. true S. line &  
Random E. line

$92 - 03$   
 $89 - 20$   

---

2 - 43 =  $90 \pm 1 - 21\frac{1}{2}$



Form 7. H. Niedecken Co., Milwaukee.

Angle at center between  
Randoms (S.E.)  $89^{\circ} 30'$   
N. & S. Random  $1^{\circ} 20'$   
true E. & N.  $1/4$  line  $90^{\circ} 50'$

$90^{\circ} 30'$	$90^{\circ} 25'$
$1^{\circ} 20'$	$25 - 28$
$89^{\circ} 10'$	$92 - 53$
	$1^{\circ} 27'$
	$91^{\circ} 26'$

Angle bet. N. & S. R<sup>m</sup> + true E. & N.  $1/4$  line

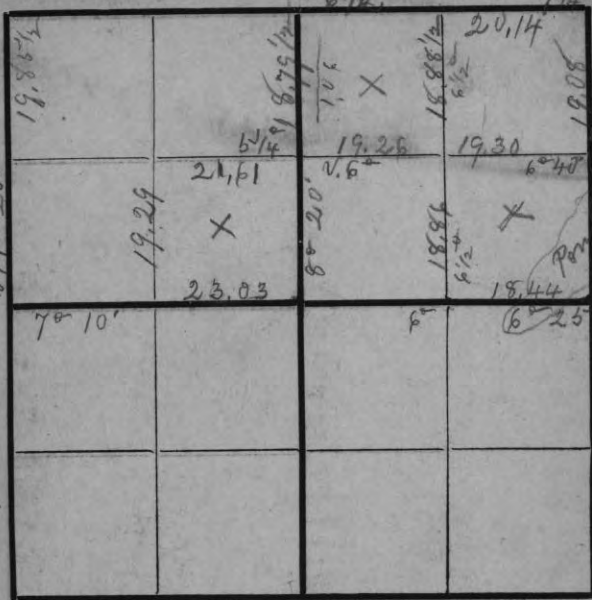
$90^{\circ} 30'$	$90^{\circ} 30'$
$1^{\circ} 20'$	$1^{\circ} 20'$
$89^{\circ} 10'$	$89^{\circ} 10'$

$92^{\circ} 15'$   
 $89 - 10$   
 $2) 3 - 5$   

---

1 - 32

Sec 28 Town 42 Range 8



Form 7.

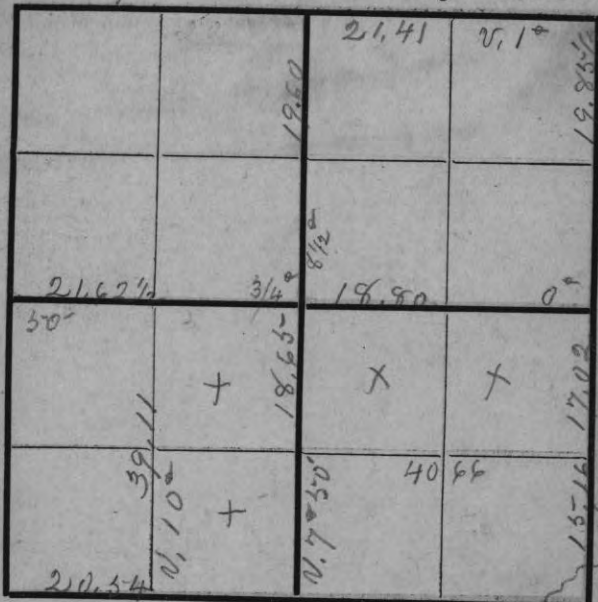
H. Niedecken Co., Milwaukee.

N. 1/2 E. 1/4	19.08	20.14	23.03
± 2 1/2	18.80	18.44	21.61
	.28	1.70	1.42

82.94	1010.27	6 1/8 E. 1/4 Sully H. 60% N.	1 25
36.88	59.81		4 00
246.06	1012.7		5 40
23.03	91.43		6 30
59.91	506.35		
	6067085-7		

1/8 E. 1/4	1010.27
	18.44
Sully H.	405.08
E. 1/4	870.58
	101.27
18 2/3 N.	18.67

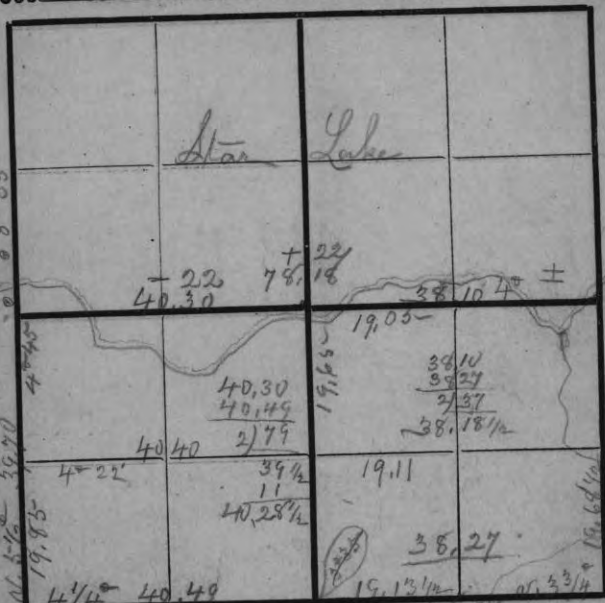
Sec 29 Town 42 Range 8



Form 7.

H. Niedecken Co., Milwaukee.

139173.74314511287
287
5202015
5948160
1486290
213292615
139173
741096
695868
452311
417579
347925
278346
695750



Form 7.

H. Niedecken Co., Milwaukee.

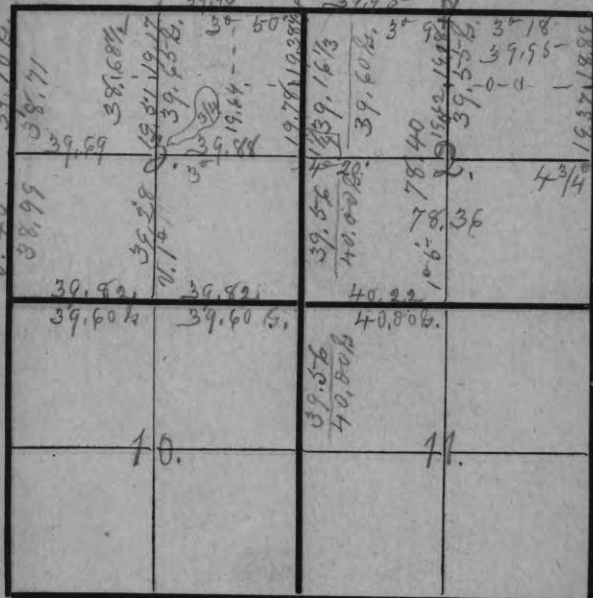
Preparing trees gone at S. E. cor.  
 Evidence of its location.

An old stake & different "cross-ers" marks, bore & dist. distance to nearest corners. Old plases on contiguous lines.

The angle at N. 1/4 P. lengthens 1/4 line about 22 links.  $78,40 \div 2 = 39,20$

40,49	78,40	40,80	1,10
38,27	38,10	2) 38,10	19,05
2,22	40,30	1,90	

40,49    78,76    N. 1/2 of S. line is  
 38,27    78,40    222 chs longer  
 78,96    36    than E. 1/2.



Form 7.

H. Niedecken Co., Milwaukee.

$$39,65 : 38,685 :: 19,65$$

193426	19,51
232110	14,78
348165	
35685	38,68
76016025	2) 39,29
3965	19,17
36366	19,51
35685	
6810	38,84
3965	39,14
28452	2) 77,84
27756	38,92

N. 1/4 on E. line  
 6 1/3 N.  
 14 2/3 W.  
 1/8 bet. N. & E  
 83. N.  
 13 3/4 W.

1/8 bet. E. & N.  
 6. 6  
 S. 14 1/3

There seems to be a discrepancy in the measurement of the N. 1/2 E. & N. 1/4 lines of 2. and in N. 1/2 E. 1/8 of 3

E. & N. 1/4 line  
 3 1/2 S. ea.  
 N. & S. 1/4 line  
 3 3/4 ea

Sec 1 Town 42 Range 8

1889 0, 3 1/4	19,97 1/2		
41 03			
19,37	21,07 1/2	19,75	
1 3/4	42 15	37	41 22
		20,05	
		20,00	

Form 7.

H. Niedecken Co., Milwaukee.

Sec 3 1/4 Town 40 Range 9

		12,58	9,13
		36,24	34,83
		270,11	35,058
11,10 1/2	40,40		
		91 90	20,20
		11 10	
		80 80	

Form 7.

H. Niedecken Co., Milwaukee.

40.1 39,50 11,20  
 20  
 79,000 (19,75)  
 40  
 390  
 350  
 300

1/8 bed, N 1/4  
 25 N.  
 7 1/4 E.

1/4 line sec. 2  
 39,55; 38,50; 19,55

19,55  
 19,400  
 19,400  
 34,920  
 3480  
 75,85,400 (19,20)  
 3955  
 363064  
 38595  
 88,090  
 7910

83,37  
 42,15  
 41,22

79,142 31,508 80,39  
 23926  
 Page 43, 76, 740  
 71,478

76.5 21,570 (282)  
 15,30  
 6,270  
 6,120  
 15 3/4 1500

See map in Bureau drawer

39,30  
 20,00  
 75,40; 79,42; 59,30:  
 59,30  
 238,260  
 71,478  
 39710  
 4709,6060 (62,46)  
 45,24  
 1856  
 1609  
 5480  
 3016  
 4646  
 4524

32,30  
 10,73  
 21,57

39,30  
 37,20  
 76,50

85.0

44. X X  
 Sec 22 Town 43 Range 8

2° 35'	20.35	20.61	
	X	X	20.80
19.97	20.45	21.7	20.55 1/2
	20.54	5° 20'	
19.93	X	20.52	20.88
	20.46	X	X
40	92	X	X
X	X	X	X

Form 7. H. Niedecken Co., Milwaukee.

Sec 27 Town 42 Range 8 45

19.08	3 1/2	20.38	
	19.80		21.4 52
	41	20.60	
	19.84		
Pond	4 1/2	20.80	40.10
			76.62
			37 1/2
			4 3/4
			39.42

Form 7. H. Niedecken Co., Milwaukee.

Calculation for 1/8 corners in 26.  
 81.15 -  
 40.60  
 2) 40.55  
 20.27 1/2  
 60.87 1/2  
 1/8 bet. N. 1/4  
 3/8 bet. N. 1/4  
 8 1/2 N.  
 4 3/2 N.  
 1/8 bet. E. 1/4  
 3 lbs. E. T  
 15 1/2 " N.  
 1/8 bet. N. 1/4  
 Tally 12.  
 39 lbs. N.  
 4 1/2 " N.  
 18.60  
 19.08  
 2) 37.68  
 18.84

76.62, 50000, 00652, 81.10, 31580, 03884  
 45972, 40280, 34310, 19700  
 + 22  
 00652  
 39  
 5858  
 1956  
 25428  
 at 39 chs.  
 15325  
 .03884  
 61300  
 122600  
 122600  
 43975  
 5952235  
 03884  
 20.6  
 23304  
 7768  
 800104  
 Tally 1.  
 16 1/2 E. T  
 80 S.

Sec 10 Town #1 Range 8

20.80	20.40	20.09	7.03
Ballard Lake	X	X	m
494	20.59	18.58	15.30
19.85		Lab 6	m
3 1/4			20.08
		17.07	20.08
40.00			17.07
21.15	X	X	17.07
18.84		Star Lake	

Form 7. H. Niedecken Co., Milwaukee.

From N. E. cor. W. to N. S. is 6.50 (on the ice)  
 " N. S. to 1/4 Post " 27.12  
 Intermediate course 3362 33.62  
 would add at E. & W. 1/4 line .52  
 1.12 from 35.00 = 33.88 34.14 2) 34.14  
 2.1/4 on W. line. 18.58 33.62 20.09  
 E. & W. random + 15.30 .52 2) 37.16  
 Sec. line 18.58

76.47	49 000	100.64
3 1/4 ea	458 42	
more	31180	
Fully 3.	30588	

Because of so many corners being in the water surely this on intermediate course.

Sec 11 Town #1 Range 8

24.15	18.32		
21.24	20.93		
20.88	20.81		
m	20.00		
20.61	20.61		20.11
2-50'			

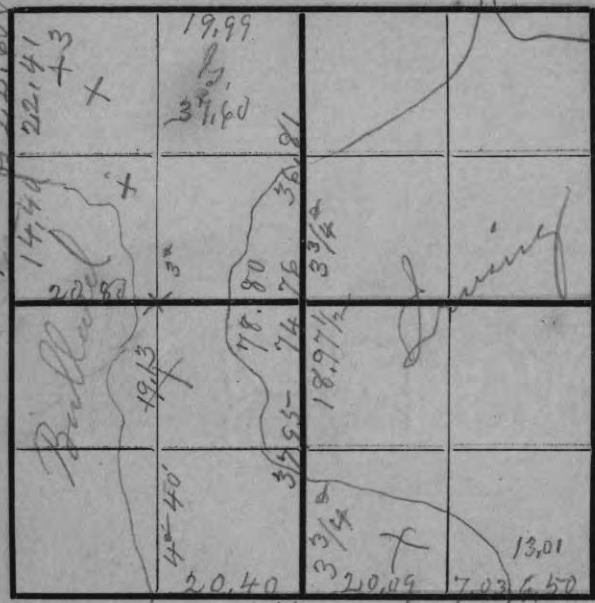
Form 7. H. Niedecken Co., Milwaukee.

17.50 : 18.32 :: 2.50 : 20.93  
 2.50 : 20.61  
 91600  
 37664  
 458000 : 2.61  
 3500  
 10800  
 10500  
 3000

18.32  
 2.61  
 20.93  
 20.61  
 .32  
 20.93  
 20.61  
 2) 41.54  
 20.77

Set - W. 1/4 on N. line  
 2.61 West of C.M. S. (on ice) 18.32  
 2.50  
 21.35  
 42.17  
 41.21  
 2) 83.38  
 41.89

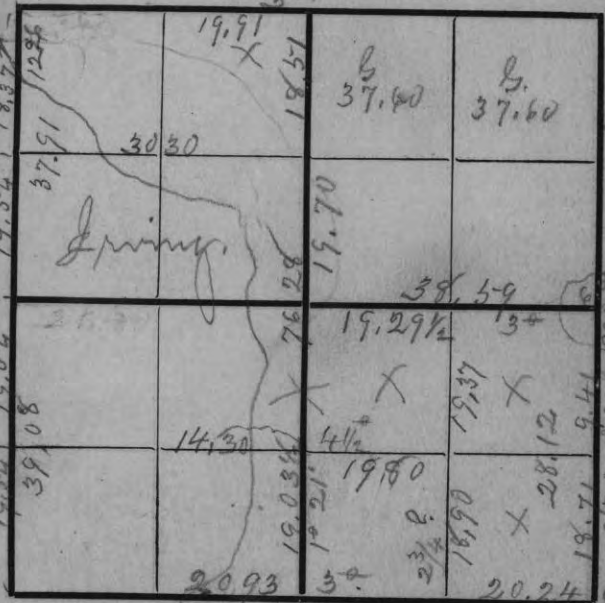




Form 7. H. Niedecken Co., Milwaukee.

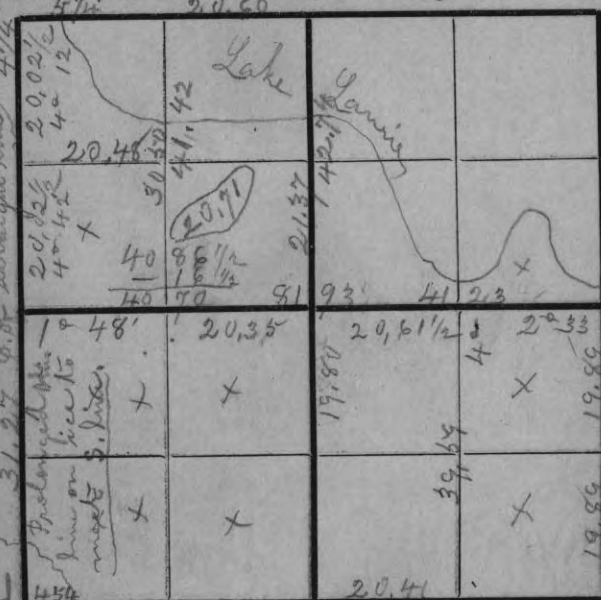
7476 | 9800 | 0131      502, 2081  
 7476      1, 4762  
 30 23240  
 74 22428      509.5843 (2244)  
 8120      42 103  
 7476      94  
 644      444 1968  
                  1776  
                  119243

Sec's 2 & 3. I have surveyed on the theory that because the 40<sup>ac</sup> not maple fractional by a lake are marked 37.60 acres, they are intended to be 18.90 chs. N. & S.



Form 7. H. Niedecken Co., Milwaukee.

a. to b, 74.80 1/2 ac.  
 78.80 : 77.00 :: 18.80  
 77  
 13160  
 13160 20.00  
 144760 (18.37  
 7880  
 65960 1.63  
 63040  
 29200  
 23640  
 55600  
 55160  
 19.03  
 18.71  
 32  
 20.24 39.08  
 19.30 19.37  
 .94 57.45  
 60.00  
 5745  
 July 23-3-12  
 18.74 : 16.98 :: 9.94 :: 10.08  
 30.06 : 28.12 :: 2.0 : 18.71  
 38.80 : 38.21 :: 2.0 : 19.70  
 20.80  
 18.37  
 4.1.63  
 18.37  
 19.54  
 37.91  
 40.00  
 37.91  
 9. N. 2.09  
 50.06 : 28.12 :: 2.0 : 18.71



Form 7. H. Niedecken Co., Milwaukee.

$6 \frac{1}{2}$  is 33 lbs. wider than  $W. 1/2$ ;  $33 + 2 = 16 \frac{1}{2}$

81.93) 1,7050  $\left( \begin{array}{l} 2041 \\ 16386 \\ \hline 8560 \end{array} \right)$

$- (10' 12") \begin{array}{r} 65400 \\ 65544 \\ \hline 8560 \end{array}$

$\frac{18 \frac{1}{2}}{12}$

Dist. bet. straight lines  $82.05 - 2 = 41.02 \frac{1}{2}$

$41.02 \frac{1}{2} + 16 = 41.18 \frac{1}{2}$

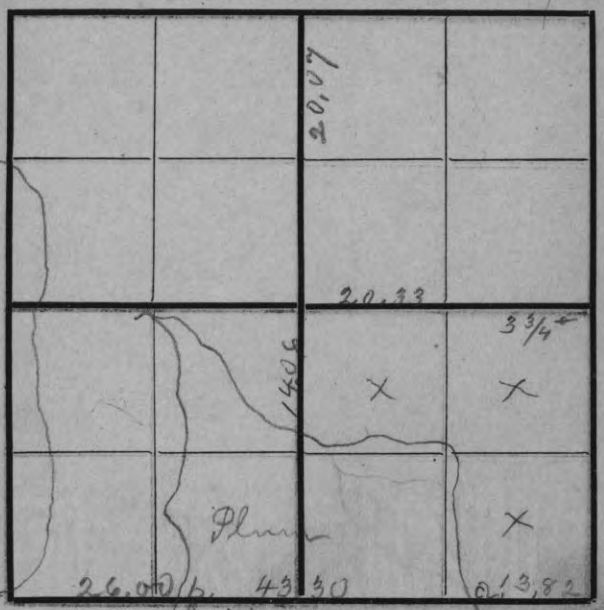
$41.18 \frac{1}{2} + 0 \frac{1}{2} = 41.23$

$81.93 - 41.23 = 40.70$

81.93  
 12  
 2) 82.05  
 41.02 1/2  
 16  
 41.18 1/2  
 82.05  
 41.23  
 16  
 40.82 1/2  
 16 1/2  
 40.70  
 41.19 1/2  
 4 1/2

Tally 12,  
 E. N.  $31 \frac{1}{2}$   
 S.  $1.27 \frac{1}{2}$

8469670 =  $84 \frac{2}{3}$  B.  
 Tally  $350 + 42 \frac{1}{2}$  S.



Form 7. H. Niedecken Co., Milwaukee.

Did not find m. p. at a. or b.  
 Made a straight line from b. to S. E. cor. of section.

5-2.

Sec 27 Town 41 Range 8

20.77	20.59	20.41	20.24 1/2
X	40	X	20.75
31.30	m	19.89	X
40	20.80	4 1/2	20.25

Form 7.

H. Niedecken Co., Milwaukee.

97y 46.70 measure  
47.5-98

P 715

3,340 (P 715)

47.59: 46.70 :: 32.10

$$\begin{array}{r} 321 \\ 4670 \\ 9340 \\ 14010 \\ 1499070 (31,50) \\ 14277 \\ 7137 \\ 4759 \\ 23780 \\ 23795 \end{array}$$

$$\begin{array}{r} 80.1 \\ 2,430 \\ 2418 \\ 1200 \\ 90 \end{array}$$

$$\begin{array}{r} 03015 \\ 6071 \\ 33015 \\ 21105 \\ 1989 \\ 80,60 \\ 40,82 \\ 23978 \\ 1989 \\ 80,71 \\ 18090 \\ 18304085 \end{array}$$

July 12  
12.68 W.  
39. S.  
67. W. 1/4

5-3.

Sec 4. Town 41 Range 8

20.24	20.51	20.02 1/2	20.02 1/2
Lake Regina			
39 59/160	18.94 1/2	19.00	19.23
20.24	20.51	20.02 1/2	20.02 1/2

Form 7.

H. Niedecken Co., Milwaukee.

39.65: 57.60 :: 20

$$\begin{array}{r} 20 \\ 75200 \\ 6965 \\ 35550 \\ 31720 \\ 38300 \\ 35685 \\ 26150 \\ 23790 \end{array}$$

If you take the  
 decrease in  
 acre in the N.  
 tier of 40' the line  
 from d. to b. is  
 39.65-ks. measure  
 If you take  
 the proportion  
 bet. the E. & W.  
 line of section  
 it is 39.57%  
 I took the latter

20.35-	22.01	20.82	N. 6
21.78	1 1/2	40.64	3 1/2
	21.40	1 1/4	

Form 7. H. Niedecken Co., Milwaukee.

21.75-			
	26.74	18.37	38.24
			19.82
	18.81	8.81	
	19.23	19.23	19.77
	20.01		19.68

Form 7. H. Niedecken Co., Milwaukee.

Field Notes call for N. 1/4 P, Tank & N. 20 W, 40. — indicating an open swamp. There is not such country within 40 rods of the proper place of 1/4 P; but there are <sup>W</sup> Pines 18 S, 12 1/2 E, 15- 24 N, 21 1/2 E, 29

56.

Sec 1, Town 41, Range 8



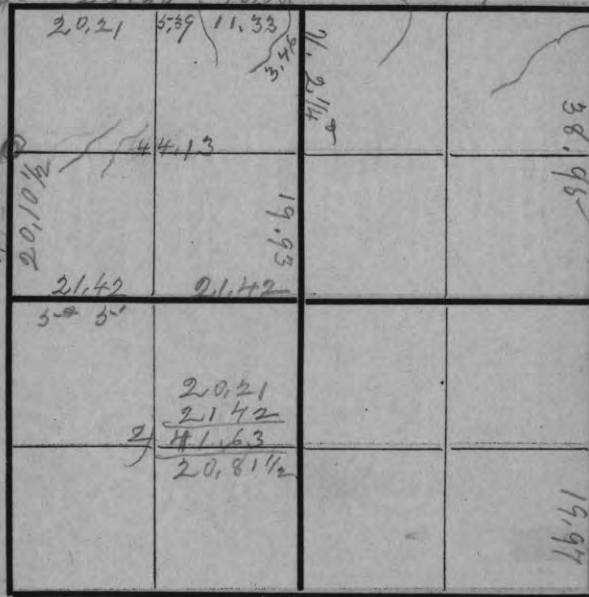
Form 7. H. Niedeecken Co., Milwaukee.

Feb. 1903

Run a line from the E. line to the W. line - each line prolonged far enough South to clear the point on the E. 1/4 line. Set a stake 10 links E. of midway, and run a line from the N. 1/4 P. to it - thus getting an intermediate course for the N. & S. 1/4 line.

57.

Sec 8, Town 39, Range 7



Form 7. H. Niedeecken Co., Milwaukee.

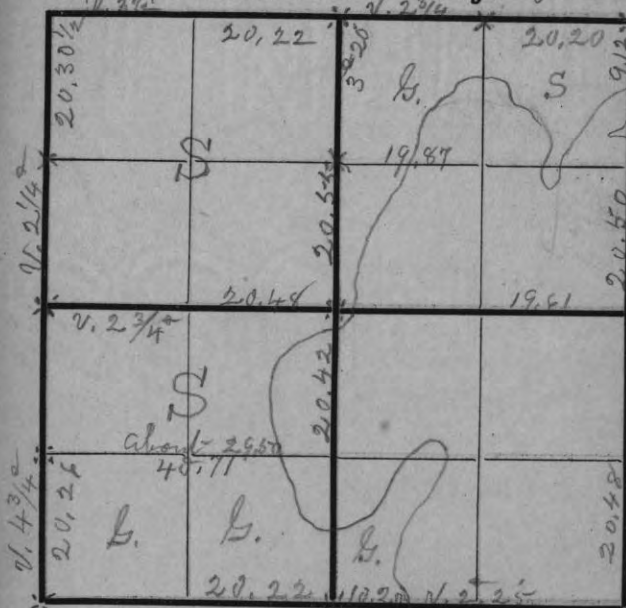
Aug. 1903.

Set W. 1/4 P. by Woodruff's marks and a corner that somebody had set, & inked trees. N. & S. com. & E. 1/4 P. gone. Did not find N. 1/4 P. W. 1/4 P. 5. Worriays instead of W. Pine. Did not find M. S. West of N. 1/4 Post. From dam general course of stream is about S. 15° W.



Form 7. H. Niedecken Co., Milwaukee.

Lot 4 seems to be bounded by the N. + S.  $\frac{1}{4}$  line & by the water; although the South Fork does not seem to be meandered.

Form 7.4 =  $\frac{1}{4}$  =  $20.2\frac{3}{4}$  H. Niedecken Co., Milwaukee.

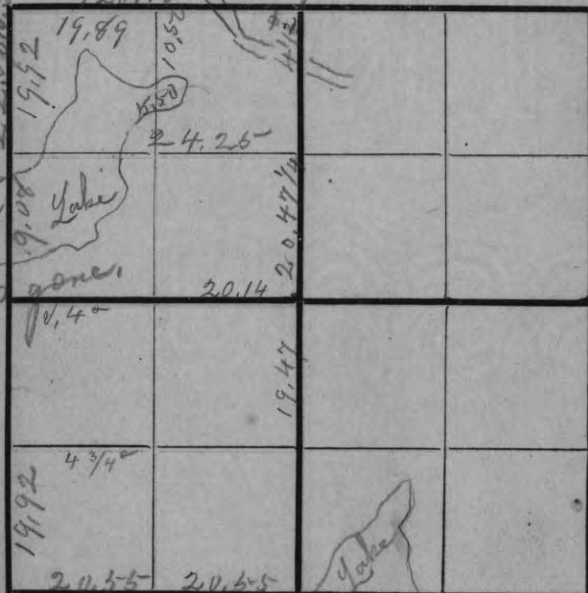
40.60
40.52
2) .08
.04

Lot an intermediate course for E. + W.  $\frac{1}{4}$  line by measuring the W. line & the E. line. Lot the S.E. corner by prolonging the S. line from S.W. corner to N.E. to intersect line from N.E. corner to N.W.

E.  $\frac{1}{8}$  intermediate bet. E. line + N. + S.  $\frac{1}{4}$  lines

Apr. 6<sup>th</sup> 1904

Sec 9 Town 39 Range 6



9, 5 1/2 Form 7. 42.75 H. Niedecken Co., Milwaukee.

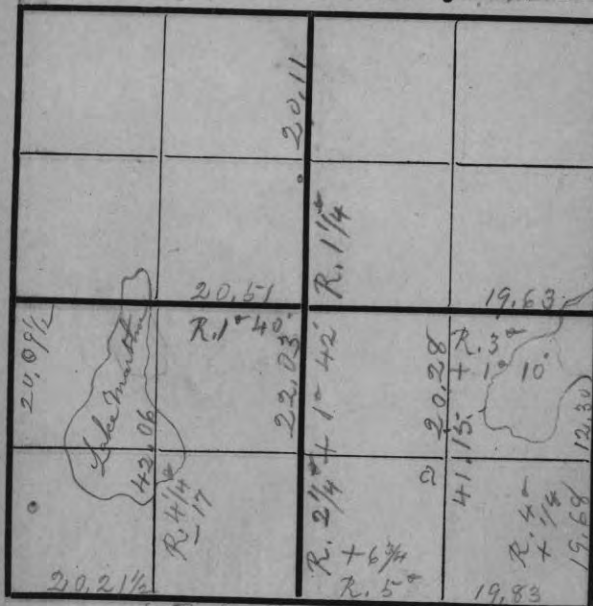
Surveyed N. 1/2 as though there were no Lake in it.  
The field notes say N. 1/2, 8 & 9, 22.08, to Lake. 31.28 across Lake.

I comm. at N. N. cor & run S. & found as above; thus showing that they started at N. N. cor.

The Lake is in the N. N. 1/4 instead of S. N. 1/4 and is meandered.

I run from S. N. to S. E. cor & set 3/4 on N. side of Lake, & set S. 1/4 at proportionate dist

Sec 20 Town 43 Range 4



Form 7. H. Niedecken Co., Milwaukee.

6 1/2 S. line  
Moveally 4  
N. 17 1/2 + N. 2.35

5 1/2 E. line  
Moveally 4  
32 S. + 8 N.

Angle at a. is 85° 10'

85° 10' ÷ 2 = 42° 35'

3.75 N. of above Angle N. E.  
is 42° 35'

5.50 to Lake.

Have Lot 4 & Lot 7 each its proportion of the land in 6 1/2 of S. E. of 20, which appears on plat as Lake - as near as I could come.



Form 7.

H. Niedeecken Co., Milwaukee.

32.25:27.00::20  
 20  
 54000(16.744  
 32.25  
 21750  
 19350  
 24000  
 22575  
 14250  
 12900

32.25:27.00::12.25  
 27  
 8575  
 2450  
 3307.5/10.25  
 3225

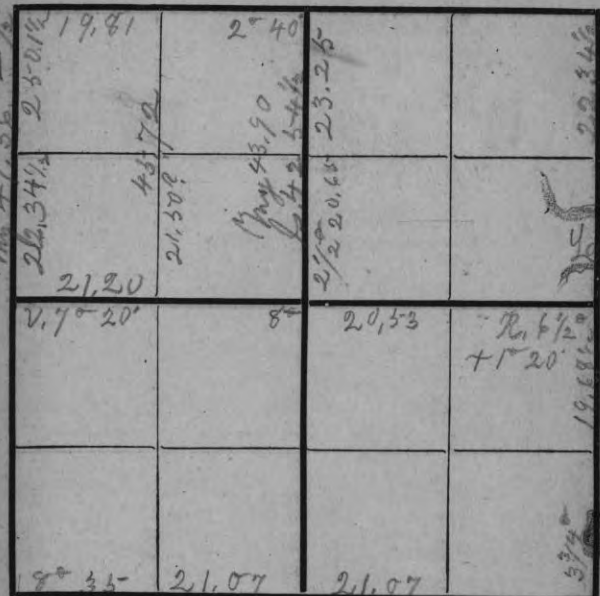
1/8 Sect. N. 1/4  
 57.50  
 Move S. 39.  
 + E. 17 1/2

8250  
 6450  
 18000

Across Ballard  
 13.85 South  
 14.50 My mea.  
 8.11 to 1/4 P.  
 6.39 " N. shore

N. 1/4 on W. line  
 July 4, 130 B  
 E. 1.14 1/4

Did not  
 find Cor. b. on  
 N. side of  
 Ballard  
 Lake



Form 7.

H. Niedeecken Co., Milwaukee.

Did not find S. 1/4 P.  $\frac{2}{39.37}$   
 19.68 1/2  
 42.03  
 Could not find Witness  
 corner on N. side of Pond, 19.68 1/2  
 and so treated the Pond, 22.34 1/2  
 and the Lake - which 82.39  
 does not appear on 92.70  
 the South plat - as  $\frac{2}{125.07}$   
 lands; and set E. 1/4 82.54 1/2  
 Post at a proportional  
 distance between the N. E. cor-  
 ner + the S. E. corner.





roughly 4 on N. 1/2 E. line of 1.35-3  
 5 lbs S. + 10 1/2 lbs. Wash,

43.54) 165.00 (38  
 130.62  
 34.38

Antigo

Wednesday

Dear Sir:

48  
 19.51  
 19.80  
 4-4

A card from Mr. Dorr

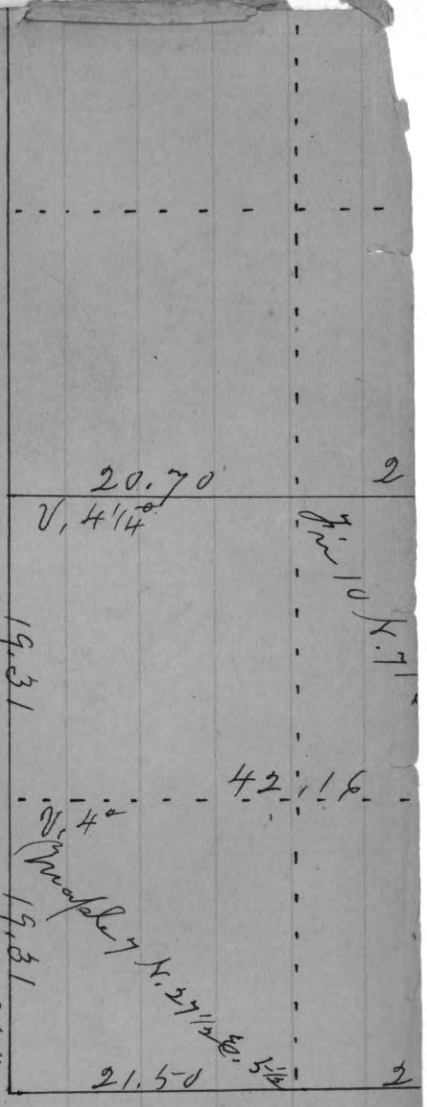
This morning says they found  
 the ice to roll on at Three Lakes to  
 work so they came back to Eagle  
 River, and were going out three  
 miles East to Cat Fish Lake - so  
 you may find him out there.

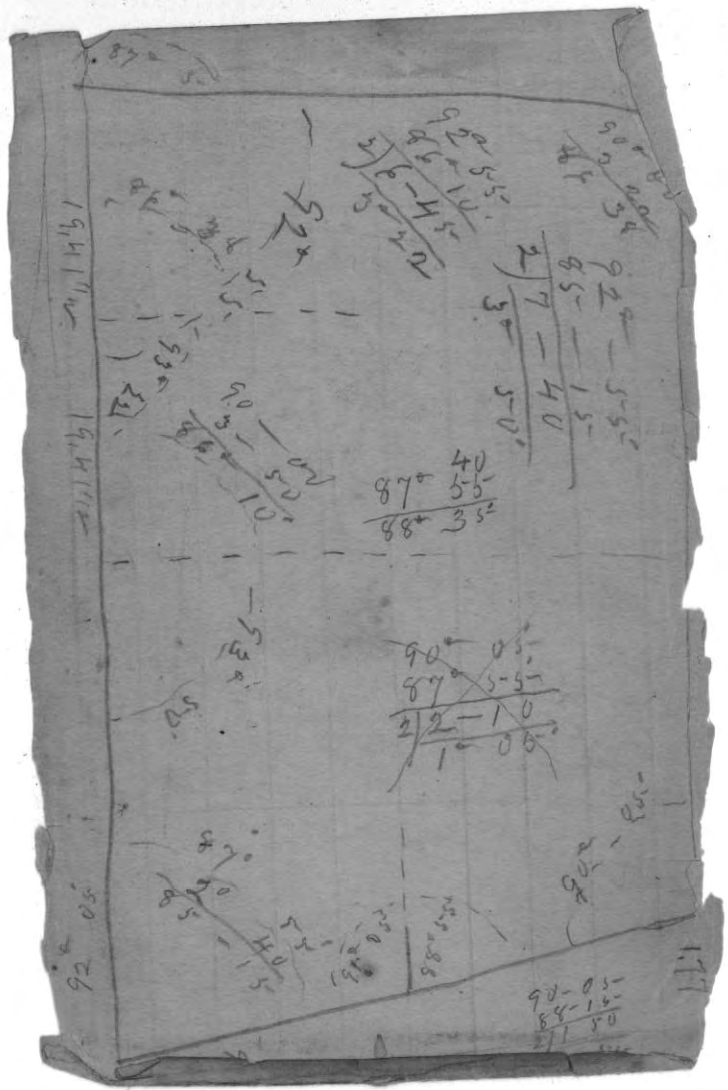
Yours Resply

Mr B. F. Dorr

Above  $3\frac{1}{4}$  on N. line of 12'  $\times$  2 lbs. S. of  $3\frac{1}{4}$  N.

N. 20° E 40      N  
 N.  $11\frac{1}{2}$ ° E. 35      34 — 14<sup>6</sup>  
                             34 — 7  
                             4 — 7





$$\begin{array}{r}
 90 \\
 55 \\
 \hline
 35 \\
 10 \\
 \hline
 25
 \end{array}$$

$$\begin{array}{r}
 92 \\
 55 \\
 \hline
 37 \\
 40 \\
 \hline
 50
 \end{array}$$

$$\begin{array}{r}
 87 \\
 40 \\
 55 \\
 \hline
 88 \\
 35
 \end{array}$$

$$\begin{array}{r}
 90 \\
 87 \\
 22 \\
 \hline
 10 \\
 06
 \end{array}$$

$$\begin{array}{r}
 90 \\
 84 \\
 \hline
 21 \\
 50
 \end{array}$$

19' 11/16"

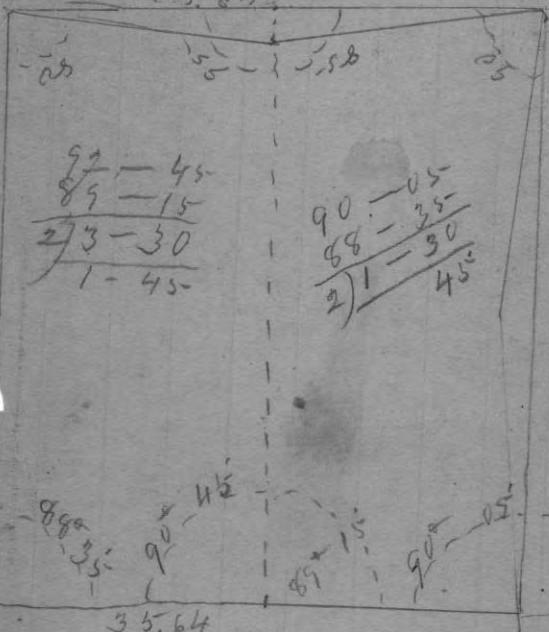
19' 11/16"

92' 05"

11'

$$\begin{array}{r} 4 - 00 \\ \hline 3 \quad 40 \\ \hline 20 \\ \hline 37 \\ \hline 25 \quad 24 \quad 5-3 \end{array}$$

3,6,30



$$\begin{array}{r} 92 \\ 89 \\ \hline 273 \\ \hline 1 \end{array}$$

$$\begin{array}{r} 90 \\ 89 \\ \hline 21 \end{array}$$

35,64

362438  
892979

372 335-  
297 268  
475 267  
37 1/2 33 1/2

3  
268  
33 1/2  
30 1/2

6  
297  
37 1/2  
3.34 1/2

180  
116 48  
63 - 15

72979 :: 4.50  
45-0

4895-0  
916  
40550 (11.09)

58  
025  
436  
8760  
1942

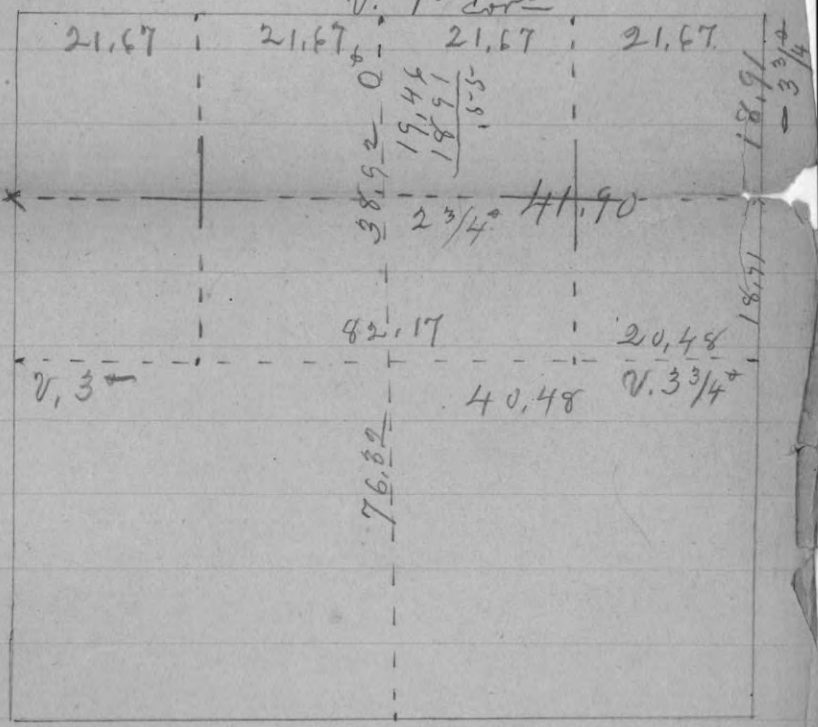
746  
31  
7.77  
3.34 1/2  
11.11 1/2

04466  
40  
1.78640  
July 8,  
1.48% S,  
V. + 2 + 35-

July 4.  
on 6. line  
1.09 X.  
10 1/2 W.

Sec. 26, 34-11

V. 1<sup>st</sup> cor<sup>d</sup>



04488  
405-0

220300  
7864  
4047

025-  
40  
.100

492  
2025  
460  
84  
300

76.82

Notes pay  
to \$ 40.  
Notes pay  
to \$ 11 1/2

Go thru L  
rel - \$ 1 1/2 on H. line  
of 1/2 a little  
off earl-month.

1329. 1 1/2  
7997  
Bridg 12  
8.21 6.28 3/4  
2.6 1/4  
7997

See, 13, 34-10.

2/26 58.3  
1329. 1 1/2

19.10 ; 19.10

Sec. L. R. P.

√10	—	41	—	8	—	46
√11	—	41	—	8	—	47
√3	—	41	—	8	—	48
√2	—	41	—	8	—	49
√12	—	41	—	8	—	50
√21	—	41	—	8	—	51
√27	—	41	—	8	—	52
√4	—	42	—	8	—	53
√33	—	43	—	8	—	54
√34	—	43	—	8	—	55
√1	—	41	—	8	—	56
√8	—	39	—	7	—	57✓
√9	—	36	—	10	—	58✓
√16	—	41	—	8	—	59
√9	—	39	—	6	—	60✓
√20	—	43	—	4	—	61
√5	—	41	—	8	—	62



90-16  
K. 16  
K. 16  
K. 16

Jan. 13 S. 5. 2. 12  
" 14 N. 2. 8  
" 15 N. 2. 8  
" 16 N. 2. 8  
" 17 N. 2. 8  
" 18 N. 2. 8  
" 19 N. 2. 8  
" 20 N. 2. 8  
" 21 N. 2. 8  
" 22 N. 2. 8  
" 23 N. 2. 8  
" 24 N. 2. 8  
" 25 N. 2. 8  
" 26 N. 2. 8  
" 27 N. 2. 8  
" 28 N. 2. 8  
" 29 N. 2. 8  
" 30 N. 2. 8

Q. 1 3/4  
19.65

Prin. 12 S. 8. 2. 21. 4  
19.65

70

20.08

18.80  
19.34

19.23

Aug. 12 S. 5. 2. 5  
" 13 S. 5. 2. 5  
" 14 S. 5. 2. 5  
" 15 S. 5. 2. 5  
" 16 S. 5. 2. 5  
" 17 S. 5. 2. 5  
" 18 S. 5. 2. 5  
" 19 S. 5. 2. 5  
" 20 S. 5. 2. 5  
" 21 S. 5. 2. 5  
" 22 S. 5. 2. 5  
" 23 S. 5. 2. 5  
" 24 S. 5. 2. 5  
" 25 S. 5. 2. 5  
" 26 S. 5. 2. 5  
" 27 S. 5. 2. 5  
" 28 S. 5. 2. 5  
" 29 S. 5. 2. 5  
" 30 S. 5. 2. 5

19.38

12 1/4

Prin. 12 S. 8. 2. 21. 4  
" 13 S. 8. 2. 21. 4  
" 14 S. 8. 2. 21. 4  
" 15 S. 8. 2. 21. 4  
" 16 S. 8. 2. 21. 4  
" 17 S. 8. 2. 21. 4  
" 18 S. 8. 2. 21. 4  
" 19 S. 8. 2. 21. 4  
" 20 S. 8. 2. 21. 4  
" 21 S. 8. 2. 21. 4  
" 22 S. 8. 2. 21. 4  
" 23 S. 8. 2. 21. 4  
" 24 S. 8. 2. 21. 4  
" 25 S. 8. 2. 21. 4  
" 26 S. 8. 2. 21. 4  
" 27 S. 8. 2. 21. 4  
" 28 S. 8. 2. 21. 4  
" 29 S. 8. 2. 21. 4  
" 30 S. 8. 2. 21. 4

19.38

19.23  
21.33/4

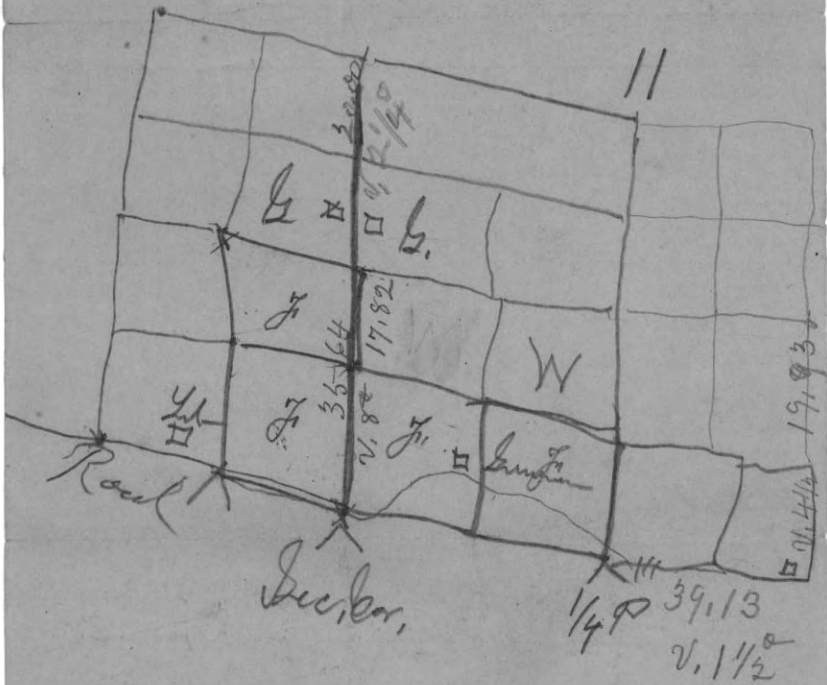
5-1

21.50

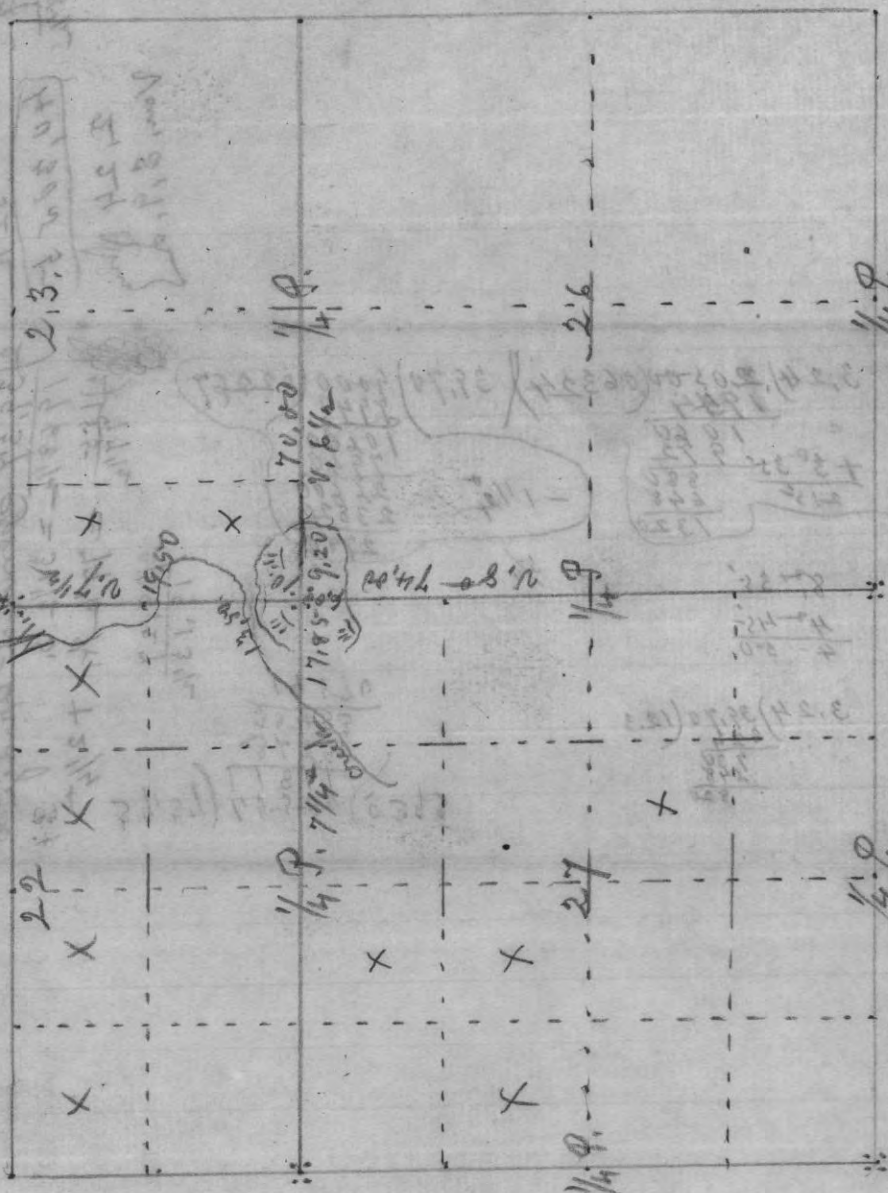
21.50  
U. 3

10

11



2550  
2000



2.3.2 600,07

499

2.1.0 200

1/4 P.

70.00

1.6 1/2

17.85 9.20

2.6

1/4 P.

Mile

X

X

X

X

22

X

X

1/4 P. 7/14

X

X

1/4 P.

X

27

X

1/4 P.

1/4 P.

Comm. at the 1/4 Post between Sections 174

24-11

East - 14, 20 B.S. Pine str. 22 N, 49 E, 4 1/2

S, 52 1/2 E, 2.50

S, 40 1/2 E, 4.00

S, 71 1/2 E, 4.00

N, 70 1/2 E, 3.80

S, 37 1/2 E, 2.00

S, 7 1/4 E, 6.50

S, 66 E, 12.50

S, 14 E, 2.75

S, 26 E, 2.50

S, 80 E, 4.00

S, 41 E, 2.75

S, 65 E, 3.50

S, 76 1/2 E, 8.50

N, 80 E, 3.00

S, 82 E, 4.00

N, 82 1/2 E, 4.00

N, 44 1/4 E, 5.00

East 9.00

N, 73 1/2 E, 11.50

N, 49 E, 2.50

N, 25 3/4 E, 11.00

N, 44 E, 3.00

N, 75 1/2 E, 3.50

N, 32 1/2 E, 4.50

N, 67 E, 3.50

N, 33 1/2 E, 6.00

N, 50 1/2 E, 2.50

Bank 22 S, 29 E, 50 1/2

Bank 16 S, 11 1/4 E, 49

Norway 20 N, 17 E, 51

Popple 12 S, 26 E, 59

New B.S. at 1/4 P. bed

Dec 16 + 17

Bank 7 S, 25 1/2 E, 37

B

N, 24 E, 5.00  
B.S. Bank 10 S, 27 1/4 E

North 15, 50 to

alake. B.S.

Balsam str. 12

N, 70 3/4 E, 36.

Van, Needle 4°

Crown 9th 1895

Pine 12 S, 53 3/4 E, 58

# DIAGRAM

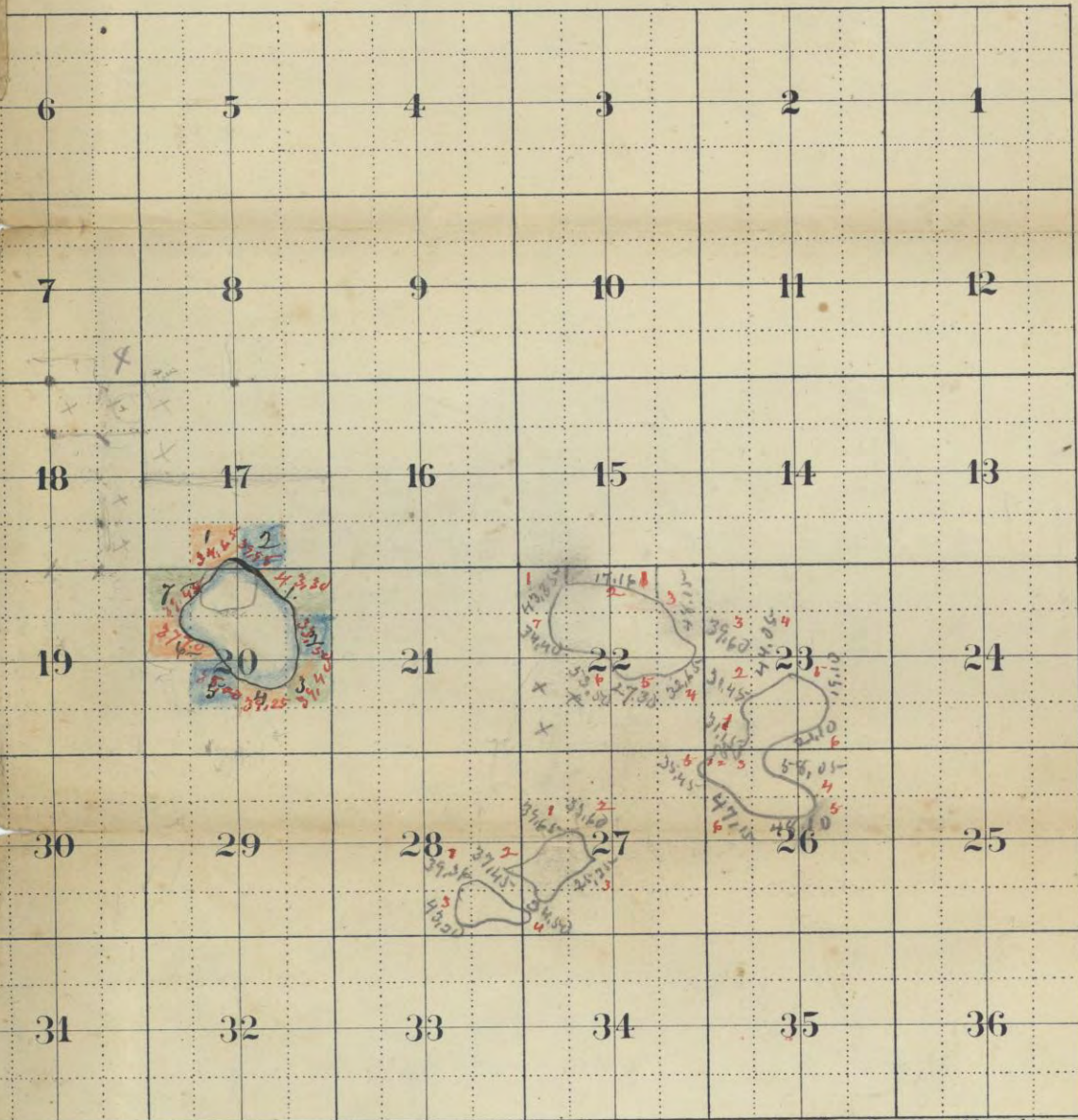
OF

Township No.

33

Range No.

11



FORM 1

Sold by H. Niedeecken & Co. Milwaukee.

