

Book 1 (Dorr)

25

Copy of my  
Field Notes

---

1882 to 1888.  
and 1888 " 1890.  
Also

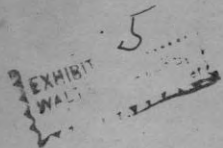
Delegation  
Notes

25

B.F. DORR # 25

all indexed ESS

all Compared



B. F. Lorr.  
Antigo  
Wis.

A copy of the  
Field Notes  
That I have

made in ~~the~~  
since I came to  
Antigua in 1882.  
Mch. 1<sup>st</sup> 1888.

Also from Mch. 1<sup>st</sup>  
1888 to " "  
1890. —————

20

p

p

Yes.

N

N.

S.

E

W

le

1/

1. | Sec. 27. 34-10.  
Dec. 6<sup>th</sup> 1882.

S. E. cor. Pine 24 N. 61 E. 18  
Birch 9 N. 35 W. 38

S. E. cor. W. (6) 38.12 Var. S. 112

E. 1/8 on S. line. Birch 12 N. 43 E. 15

S. E. cor. N. (5) 39.37 Var. W. 67

E. 1/4 P. Pine 4 lbs. instead of 14

Do W. (5) 76.56 bit it.

S. 1/4 P. N. (5 1/4) 79.77 Var. W. 28

N. 1/4 P. Several rods S. of line and  
10 rods E. of creek.

Fir dead. Ash down, and  
8 instead of 18 inches

S. 1/8 on E. line, W. bank. 8 N. 31 W. 3.

W. 1/4 P. N. (4) 42.60 Var. E. 114

N. W. cor. N. E. tree 38 instead of 40

N. 1/8 on W. line. Birch 18 N. 35 W. 24

Do Do E. (4 1/2) 40.30 Var. N. 52.

1/8 bet. N. 1/4. Birch 18 N. 40 E. 19

Sec. 27. continued. | 2.  
Ben. Dec. W. bank. 11 S. 67 1/2 W. 21

5 1/2 Do 8 N. 60 1/2 W. 21

Sec. 3. 33-11. Jan. 3/83.

E. 1/4 P. N. W. stub stop. S. E. tree down.

Do W. (5) 75.80 Var. N. 40.

Sec. 2. 33-11.

N. 1/4 P. S. (5 1/2) 84.50 Var. E. 30

Think the trees for N. 1/4 P. are at the S. 1/4 P.

N. 1/4 P. W. bank. 13 N. 37 E. 38

Lang. 14 S. 40 E. 14

S. 1/4 P. W. bank. 6 N. 75 E. 10

Do 7 S. 30 E. 30

E. 1/4 P. Trees O. K.

Do W. (5) 84.00 Var. N. 245

W. 1/4 P. W. bank. 12 N. 45 1/2 E. 15

Birch 12 N. 85 W. 14

ben. Dec. W. bank. 10 S. 7 1/2 E. 11 1/2

5 1/2 Do 11 N. 68 E. 6

1/8 bet. N. 1/4. Lang. 11 S. 40 E. 23.



3.

Sec. 21, 33-11. continued.

$\frac{1}{8}$  led. N.  $\frac{1}{4}$  E. (6 $\frac{1}{2}$ ) 40.74 Var. N. 83.  
N. E. cor. S. E. tree and N. W. stp. stg.

Do S. (5) 39.86 Var. N. 188

N.  $\frac{1}{8}$  on E. line. Wemb. 7 S. 68 $\frac{3}{4}$  E. 16 $\frac{1}{2}$

— Sec. 16, 33-11. —

S.  $\frac{1}{4}$  P. N. (6 $\frac{1}{4}$ ) 79.50 Var. E. 12 $\frac{1}{2}$  <sup>v. 5.</sup>

N.  $\frac{1}{4}$  P. Wemb. 8 N. 40 E. 22 <sup>(Lump)</sup>

Do. 8 S. 40 W. 10

N. E. cor. Wemb. stp. 10 S. 70 W. 8 <sup>(Lump)</sup>

Birch 22 N. 64 E. 12

N. E. cor S. (5 $\frac{1}{4}$ ) 43.38 Var. E. 5.50 <sup>-7 $\frac{1}{4}$  (4-35)</sup>

E.  $\frac{1}{4}$  P. Fank. 7 S. 62 W. 96

Birch stub 22 S. 37 E. 86.

N.  $\frac{1}{8}$  on E. line. Wemb. 7 S. 25 $\frac{1}{2}$  E. 9.

Do Do W. (6)

— Sec. 12, 32-10. Apr. 18/83

N.  $\frac{1}{4}$  P. N. W. tree O. K.

Lind 12 S. 44 E. 29 $\frac{1}{2}$  <sup>(Lump)</sup>

Do W. (6) 39.84 Var. S. 243 <sup>4 $\frac{3}{4}$</sup>

Sec. 12, continued. <sup>14.</sup>

N. W. cor. bedar lying down

Fank. N. 74 W. 14 <sup>(v. 2.)</sup>  
+ 1 $\frac{1}{2}$

N.  $\frac{1}{4}$  P. S. (5) 81.74 Var. W. 203

S.  $\frac{1}{4}$  P. Wemb. down. bedar dead.

N.  $\frac{1}{8}$  on N. line. Fank. 18 S. 89 W. 10 $\frac{1}{2}$  v. 5

Do Do S. (6) 20.00 + then <sup>(20 more)</sup> random

— Sec. 21, 32-11. June 6/83

S.  $\frac{1}{4}$  P. N. (5 $\frac{1}{2}$ ) 79.80 Var. E. 161 <sup>+ (1 $\frac{1}{2}$ -10)</sup>

— Sec. 22, 32-11.

S.  $\frac{1}{4}$  P. N. (6 $\frac{1}{2}$ ) 80.19 Var. W. 128 <sup>-5 $\frac{1}{2}$</sup>

— Sec. 33, 32-11.

N.  $\frac{1}{4}$  P. S. (6) 79.30 Var. E. 138 <sup>(5-40)</sup>

— Sec. 18, 34-11. June 11/83

S.  $\frac{1}{4}$  P. N. (4) 88.70 Var. E. 5.82 <sup>+ 3 $\frac{3}{4}$  47.30 (v. 8-10)</sup>

Do W. (4) 43.18 Var. S. 1.96

S. W. cor. Wemb. 14 S. 40 W. 19

Ver. 6. Fank. 11 N. 7 W. 25 $\frac{1}{2}$

Do 12 N. 5 E. 25  
Wemb. 8 S. 73 E. 9

5. Sec. 18, 34-11. continued.

N. 1/4 P. E. (5) <sup>+2</sup> 84.42 Var. S. 296 <sup>(5-1/2)</sup>  
 E. 1/4 P. Birch 30 S. 14 W. 10.  
 Do 6 N. 84 E. 6.  
 S. line S. E. S. W. 18.14 ch. long.  
 N. W. cor Birch <sup>12</sup> S. 41 1/2 W. 24  
 Do 20 N. 69 W. 24  
 Do 12 S. 48 E. 32 1/2  
 3.53 ch. E. of erased corner

ben. Sec. Aug. 20 N. 80 E. 1.  
 V. 6. Do 14 N. 27 1/2 W. 10 1/2  
 1/8 bel. W. 1/4. W. 8 S. 46 1/2 W. 38  
 N. 1/4<sup>o</sup> Do 8 N. 59 E. 43  
 N. 1/4 on S. line. Tank 20 S. 41 E. 27.

Sec. 34, 34-10. June 15/83.

S. W. cor. E. (6) 40.62 Var. N. 50.  
 S. 1/4 P. Trees and stakes lying down.  
 Do. N. W. Tank 4 N. 70 W. 24 1/2  
 V. 6. Do 4 S. 20 W. 31 1/2

Sec. 34, continued. 16.

<sup>+3 1/2</sup> 48.62 <sup>(V. 3<sup>+</sup> 25)</sup>  
 S. 1/4 P. N. (5) 91.87 Var. E. 5.60  
 ben. Sec. W. 1/4. W. 16 N. 32 1/2 E. 26.  
 V. 6. Do 10 S. 13 E. 16 1/2.  
 Do N. on 1/4 line 38.80 to 1/4 P.  
 1/8 bel. W. 1/4. W. 18 N. 62 E. 7 1/2  
 1/8 " S. 1/4 Birch 8 N. 12 E. 16  
 " " " Near N. side large stone.  
 " " " W. (8 3/4) 39.62 Var. S. 20  
 ben. S. W. 1/4. Aug. 9. N. 42 1/2 W. 5.  
 " " S. (7)

N. 1/8 on S. line W. 1/4. W. 8 S. 25 W. 16.

Sec. 30, 31-11. Aug. 9/83.

N. 1/4 P. Set-dk. gray boulder 8 x 8 x 24.  
 Do N. 77 E. (V. 6) 2868 ft. Var. S. 7 1/2 ft.  
 S. 1/4 P. N. (5 1/2) <sup>23-37 ft</sup> 47.52 ft. Var. E. 29 1/2 ft.  
 ben. Sec. E. (9 1/2) 2400 ft. - 6 in.  
 Do N. (6) 2215 ft.  
 1/8 bel. E. 1/4. N. (1) 2476 ft. Var. E. 11 ft.

7. | Sec. 30, 31-11, cont'd

Angle at  $\frac{1}{8}$  bed. E.  $\frac{1}{4}$  (8° 27')

ben. Sec. Light gray boulder  
10 x 11 x 28 and + on top

$\frac{1}{8}$  bed. E.  $\frac{1}{4}$ . Thinly boulder  
6 x 6 x 23 and + on top

E.  $\frac{1}{4}$  on N. lim. Gray boulder  
4 x 5 x 23. and + on top.

— Sec. 17, 31-11, Sept. 11, 1883  
S.  $\frac{1}{4}$  P. Sel-stone 8 x 10 x 24

Def. (with + on top.

S. E. cor. Boulder 6 x 9 x 20 with  
+ on top. Dried stump stg.

— Sec. 18, 31-11, Sept. 12, 1883.

S. W. cor. E. (3  $\frac{1}{4}$ ) 40, 98 Var. N.  $\frac{3}{4}$  lbs.

— Sec. 1, 31-11, Oct. 23, 1883.

Sec notes. (+ 2  $\frac{1}{4}$ ) (V. E.)  
S. N. cor. N. (5) 39, 54 Var. E. 1, 54.

N.  $\frac{1}{4}$  P. Fir stub stg. Birch instead of <sup>Butternut</sup>  
 $\frac{1}{2}$  (2-2) 44, 40 (V. E.)

Do E. (5  $\frac{1}{2}$ ) 85, 60 Var. N. 3, 23

— Sec. 1, 31-11, cont'd | 8, 2

Sec notes - (3-50) 39, 96 (V. E. 10)  
S.  $\frac{1}{4}$  P. N. (5  $\frac{1}{2}$ ) 76, 34 Var. 5, 14 (5  $\frac{1}{4}$ )

Sec notes  
N. E. cor. N. (5) 40, 72 Var. S. 2, 35

ben. Sec. Log. 14 x 18  $\frac{1}{2}$  E. 34.

V. 5. Elm 20 S. 71  $\frac{1}{2}$  E. 11  $\frac{1}{2}$   
- (6  $\frac{1}{4}$ ) (2°)

N.  $\frac{1}{4}$  P. N. (3) 34, 34 Var. N. 3, 80

— Sec. 35, 32-11, Oct. 26, 1883.

Sec notes. - (7  $\frac{1}{2}$ ) 40, 50 (4-20)  
S.  $\frac{1}{4}$  P. N. (5) 82, 00 Var. N. 10, 75

E.  $\frac{1}{4}$  P. Linn O. K. limb-dead.  
Do N. (3  $\frac{1}{2}$ ) 71, 08 Var. N. 3, 12

ben. Sec. Log. 16 S. 22 E. 9.

V. 5. Fir 10 N. 80 N. 14  $\frac{1}{2}$

— Sec. 31, 32-11, Nov. 29, 1883

N. E. cor. S. (6) 40, 57 Var. E. 141

E.  $\frac{1}{4}$  P. Birch & Elm tree. Def.

Do Sel-a pine post-4 feet long.

Do (+ 5  $\frac{1}{2}$ ) 46, 04 (4-10)  
N. (5) 90, 79 Var. N. 1, 45

N.  $\frac{1}{4}$  P. S. (5) 81, 32 Var. E. 10, 28

Do S. - (2-5) 41, 16  
81, 72 Var. E. 15

9. Sec. 31, 32-11, continued

N.  $\frac{1}{8}$  on E. line, Aug. 7 S.  $13\frac{1}{2}$  E.  $20\frac{1}{2}$

40 r. S. of above, Aug. 7 S.  $13\frac{1}{2}$  E. 38

ben. Sec. Pine 24 N. 87 W.  $42\frac{3}{4}$

N. 5 Do 40 S.  $66\frac{1}{2}$  E. 49.

40 r. N. of above, Pine 24 N. 12 W.  $43\frac{1}{4}$

$\frac{1}{8}$  hd. N.  $\frac{1}{4}$  Pine, stp. 36 S.  $72\frac{1}{2}$  E.  $40\frac{1}{4}$

Do, Do. W.  $(6\frac{1}{4})$  48.00 Var. S. 21 <sup>( $5\frac{1}{2}$ )</sup>

N.  $\frac{1}{8}$  on E. line. W.  $(5\frac{1}{2})$  42.71 Bar. S.  $1\frac{1}{2}$  lbs

40 r. S. of above. W.  $(5\frac{3}{4})$  44.72 Var. S. 12.

40 r. S. of ben. Aug. 12 N. 61 E. 50

$\frac{1}{8}$  hd. S.  $\frac{1}{4}$ . Aug. 15 N. 40 E.  $42\frac{1}{2}$

N.  $\frac{1}{4}$  P. N. <sup>( $3\frac{1}{2}$  - 5)</sup>  $(10\frac{1}{2})$  39.87 Var. W. 2.17

N.  $\frac{1}{8}$  on N. line. Elm 10 N. 9 W.  $27\frac{1}{2}$

E.  $\frac{1}{4}$  P. S. (4) 40.00 found on old corner - marks hewed off

40 r. S. Did not establish any.

of E.  $\frac{1}{4}$  P. W.  $(6-10)$  40.02 Var. S. 29

E.  $\frac{1}{8}$  on N. line S.  $(1^{\circ})$  20.40 Var. E. 50

~ Sec. 5, 40-10.

Jan. 1<sup>st</sup> - 184.

N. W. cor. E.  $(5\frac{1}{2})$  80.00 - 2.00

At 40 ch. E. of N. W. cor. S.  $(5\frac{1}{2})$

N.  $\frac{1}{4}$  P. E.  $(5\frac{1}{2})$  81.40 Var. S. 2.66

Later, above line is S. line of Sec.

E. line of Sec.  $\frac{1}{2}$  mile long by

Sammey's pacing. N. line  $\frac{1}{2}$  mile

from S. W. cor. to N.  $\frac{1}{4}$  P. and 17

rods more to correction lines.

~ Sec. 19, 41.10. Jan. 14<sup>th</sup> / 84.

S.  $\frac{1}{4}$  P. N.  $(5\frac{1}{2})$  79.95 Var. W. 2.40 <sup>( $3^{\circ}$ )</sup>

~ Sec. 36, 40-10. Jan. 16<sup>th</sup> / 84.

N.  $\frac{1}{4}$  P. N. <sup>( $2-12$ )</sup>  $(6)$  41.30 Var. W. 1.58

N.  $\frac{1}{8}$  on N. line. E.  $(5\frac{1}{4})$  20.00 X

X S.  $(3-50)$  20.15 and then

N.  $(5\frac{1}{4})$  20.00 to  $\frac{1}{4}$  P.

N.  $\frac{1}{8}$  on N. line. E.  $(5\frac{1}{4})$  20.00  $\Delta$

$\Delta$  N. <sup>( $3$ )</sup>  $(1\frac{1}{2})$  24.85 Var. N. 1.25

$\Delta$  S.  $(1\frac{1}{2})$  to lake, 74.23 across

to P. Bay on E. line. Returned dist. 49.23

11. | Sec. 36. 27-11. Jan. 21/84.

N. 1/4 P. E. (4 1/2) 39.76 Var. N. 3.

N. E. cor S. (4 3/4) 39.69 Var. N. 5.

N. 1/8 on E. line N. 39.58 Var. S. 24

1/8 bel-E. 1/4 N. (4 1/2) 39.68 Var. E. 50

ben. N. E. 1/4. W. bank. S. 44 N. 32 1/2

— Sec. 4. 31-11. Jan. 28/84.

S. W. cor E. (5) 40.16 Var. S. 187

S. 1/4 P. (new) Aspen 16 S. 75 E. 2 1/2

Do N. (5 1/4) 78.66 Var. E. 3.60

N. 1/4 P. E. (7 3/4) 39.68. Did not find

E. 1/4 P. No birch or maple near

N. 1/8 on S. line. Lind 14 N. 88 N. 4 1/2

Do Do. N. (7 3/4) 40.07 Var. E. 70.

— Sec. 14. 31-11. Feb. 1st/84.

N. 1/4 P. Elm stg. Fir low stg.

Do E. (5 1/4) 84.08 Var S. 4.04

E. 1/4 P. N. W. tree stg.

N. W. cor. E. (6) 42.07 Var. S. 1.38

— Sec. 14. 31-11. continued.

N. 1/4 P. S. (5) 81.75 Var. E. 34.

ben. Sec. Pine - S. 23 1/2 N. (5) 8 1/2

1/8 bel-N. 1/4 N. (6 1/4) 20.20

1/8 bel-N. 1/4 W. (5 3/4) 22.50

N. W. cor. S. (5 1/4) 40.24 Var. E. 25-

— Sec. 11. 31-11.

S. 1/4 P. N. (5 1/4) 78.50 Var. N. 91.

N. 1/4 P. E. (6 1/2) 41.66 to N. + S. 1/4 line

N. 1/4 P. W. (6 1/2) 40.34 Var. S. 66.

1/8 bel-N. 1/4 N. (6 1/2) 39.80 Var. N. 72

— Sec. 20. 31-11. Apr. 5/84.

N. 1/4 P. E. (5) 83.52 Var. N. 4.16

N. 1/4 P. S. (5) 2.80 50 E. 78.84 Var. E. 8

ben. Sec. Elm stg. 16 N. 68 N. 30 1/2

1/8 bel-N. 1/4 W. Elm stg. 16 S. 35 N. 24 3/4

Do. Do. N. (3) 33.90 to cen. RR. track

Var. S. 26 1/2 on track

N. 1/4 P. N. 41.95 1/2 Pine stg. stg.

N. W. cor. Early 31.30 to N. 1/4 P.



13.

Sec. 3, 31-10, Apr. 17/84

+ 27 39, 38

E. 1/4 P. N. (6 1/2) 83.00 Var. N. 65

-(5 1/4)

S. 1/4 P. N. (7 1/2) 78.21 Var. N. 712

ben. Sec. Pine stp. 18 S. 65 1/2 E. 28 3/4

6" Do " 30 N. 35 E. 32.

Sec. 28, 31-11, Apr. 22/84

N.W. cor. E. (4) 40.90 Var. S. 16.

-(3-25) 39.02

N. 1/4 P. S. (5-50) 79.42 Var. E. 4.80

40.52

E. 1/4 P. N. (5) 81.31 Var. N. 38

20 rods E. of N. 1/4 P. N. (2 1/4) 40.30 Var. E. 10 1/2

Sec. 29, 31-11, May 6/84

S. 1/4 P. N. (5) 42.43 + 23, 36 +

+ 18.52 Var. N. 159.

S. 1/4 P. N. (5) 42.29 1/2  
84.30 Var. N. 159

E. 1/4 P. N. 40.50. Angle bet. E.

line + E. + N. 1/4 line is 91° 12'

Angle at ben. Sec. between

1/4 lines is ± 33°.

Angle bet. E. line and E. + N. 1/4 line

this 28. is 86° 10'

May } Andersen's plat  
6 1/8 4. N. line 42.97 = 21.62 + 21.35  
N. " 6.71 1/4

114.

Andersen

(3-53)

Sec. 31, 31-11, June 10/84  
+ (2-50)  
S.W. cor. N. (4 1/2) 39.50 Var. E. 143.

Sec. 30, 31-11, June 11/84 1/2

ben. Sec. N. (9 1/4) 43.59 bet. al-

N. 1/4 P. N. (6) 34.00 to pond.

Off set - N. 120 Angle N. 10 E.

= 6.80 to point - 84 lbs. S. of cor.

Var. N. 52 at corner.

ben. Sec. N. (6 1/2) 33.62 1/2 Var. N. 46.

+ (1 1/4)  
N. 1/4 P. N. (-1/4) 43.48 Var. N. 98

N. 1/8 on N. line S. (5 3/4) 36.48 Var. E. 31.

N. 1/8 on N. line Aug. 12 S. 37 1/2 E. (5) 68 1/2

Sec. 30, 31-11.

1/8 bet. N. 1/4 - Birch 14 N. 12 E. 16 1/2

Do, Do. N. (5) 43.42 Var. N. 31.

N. 1/8 on N. line Aug. 13 N. 38 1/2 N. 14.

ben. N. N. 1/4 Aug. 12 S. 89 1/2 E. 38 1/2



15. | Sec. 30, 31-11. continued

5.46 N. of Ken. N.W. 1/4 Lind 20 N. 85 3/4 E. 27 1/2

Do Do N. (5 1/4) 18.62 Var. N. 7

Al- 5.47 1/2 N. of N. 1/8 on N. line

Pine 20 S. 41 1/2 E. 50

~ Sec. 5. 31-11. Aug. 7"/84

<sup>Sele</sup> S. 1/4 P. (6 1/2) 74.24 Var. N. 76.

~ Sec. 2. 30-11. June 16"/84.

N.W. cor. E. (5 1/4) 79.50 Var. N. 1.87

+28  
N. 1/4 P. N. (5 1/4) 51.19 Var. N. 42.

(-10) 40.11  
S. 1/4 P. N. (5) 91.04 Var. N. 29 (4-20)

40.04  
N. 1/4 P. E. (4) 80.33 Var. S. 26 1/2

N. 1/4 P. Birch 12 S. 22 N. 4

5° Sugar 12 N. 13 1/2 E. 19

E. 1/4 P. N. (5) 50.54 Var. E. 57 1/2

40 r. S. of N.E. cor. Elm 16 N. 34 N. 26 1/4

ben. dec. Sugar North 13 1/4

5° Birch 20 N. 85 N. 28

80 r. N. of Ken. Aug. 8 S. 88 1/2 E. 33 1/4

Sec. 2, 30-11. continued, | 16. 2

40 r. S. of N. 1/4 P. Aug. 12 N. 65 N. 29 1/2

Do Do E. (4 1/4) 39.84 N. at it.

N. E. cor. Ld-5. Aug. 12 S. 80 1/2 N. 10 1/3

S. W. cor. Ld-2. Aug. 16 N. 59 E. 15 3/4

S. E. cor. Ld-8. Aug. 10 S. 85 E. 23.

Do Do N. (5 1/4) 40.03 1/2 Var. E. 2.

N. E. cor. Ld-8. Elm 16 N. 20 1/2 E. 27 1/2

~ Sec. 15. 31-11. (2-20)

+ (2 1/4) 34.20  
E. 1/4 P. N. (4) 74.88 Var. N. 29.3

(6 3/4)  
S. W. cor. E. (6 1/2) 82.32 Var. N. 3.10

S. 1/4 P. { Cherry 12 S. 11 E. 36 1/2

5° { Pine 18 N. 1 1/2 E. 55

ben. dec. { Cherry 12 N. 65 1/2 N. 45

5° { Elm 8 S. 62 1/4 E. 39

Do N. 41 E. (5) 53.20 Var. S. E. 36.

Do S. 46 N. (1 3/4) 58.65 Var. N. N. 118

(3-20) 39.65  
S. 1/4 P. N. (5) 80.00 Var. N. 4.68 (5-24)

(Diagonal road.)

Sec. 20, 31-11.

N. 1/4 P. N. 52 1/2 to middle of track

N. in middle of track 20.00

Thence E. (2) 33.57. Var. N. 3 1/2

\* Elm stp. 16 N. 56 1/2 W. 20. (V. 5)

Thence N. in ben. Highway 18.03

\* N. 6.25 + then N. 32.65 to ben. track

Var. (V-55) Var. S. 10. (6.17 1/2) on track

N. 1/4 P. N. on Sec. line 20.23 to R. of

Sec. 16: 33-10, Aug. 20/84.

E. 1/4 P. N. (5 1/4) 40.86 Var. N. 1.66.

N. 1/8 on E. line. Cedar 6 S. 53 W. 16 (V. 5)

E. 1/4 P. N. (4 1/2) 86.10 Var. S. 4.67 (5 1/4)

From Lally 4. on above line, N. (5)

40.65 - 217 that tally 4 ought-

to be set N. Var. N. 1.28

1/8 bed. N. 1/4. E. (3) 27.50 + left it.

Sec. 5, 31-11.

N. 1/4 P. E. (6 1/2) 41.91 Var. N. 1.06 (6-60)

N. E. cor. N. (5) 37.66 Var. E. 87. (4-65)

Sec. 7, 32-11. Sept. 23/84.

E. 1/4 P. N. (6) 39.50 + 21.62 + 26.84. 87.96 Var. N. 87. (5 1/4)

N. 1/4 P. S. (6) 41.23 80.91 Var. N. 251 (4 1/2)

ben. Sec. Boulder 4 x 6 x 18 and

2 bricks under it.

1/8 bed. N. 1/4. W. 16 S. 35 W. 21 1/2 (V. 5)

Sec. 8, 32-11.

N. 1/4 P. E. (4) 3-33 41.07 82.70 Var. N. 5.12 (3-25)

S. 1/4 P. N. (5-5) 36.00 82.50 Var. E. 2.66 (V. 6)

ben. Sec. Long. 18. S. 19 1/2 W. 25 1/2 (V. 5)

Do S. 47 1/2 E. (6) 56.34. left it.

Thence S. 44 E. (6 1/2) 56.50 Var. S. W. 6.

Thence, S. 46 1/2 E. (6 1/2) 59.20. " 14.

Last 3 courses retracing Deleglise's line

Sec. 28, 32-11. Oct. 6/84.

N. 1/4 P. N. (5 1/2) 40.03 Var. E. 67 (5 1/4) Sec. 28

Do E. (5 1/2) 41.43 83.36 Var. S. 2.63 (5 1/4)

N. 1/4 P. S. (5 1/2) 39.65 80.24 Var. N. 13

1/8 bed. N. 1/4. Long. 20 N. 63 W. 44 3/4

Sec. 28. 32-11 continued

pen. Dec. Elm 12 S. 77 1/2 N. 51.  
 3<sup>o</sup> Do 10 N. 48 E. 59  
 1/8 bel. N. 1/4<sup>(-30)</sup> W. (7) 41.02 Var. S. 35<sup>(7-35)</sup>  
 N. 1/8 on W. line. Pine 12 S. 30 E. 34 1/2

Sec. 27. 32-11, Oct. 20/84.  
 -25 1/4 P. 56  
 W. 1/4 P. E. (6) 87.76 Var. N. 84.  
 E. 1/4 P. N. (6 1/2) N. 5 W. 40.54 Var. E. 39<sup>(2, 5-3/4)</sup>  
 (+6 3/4) (5 3/4)  
 N. 1/4 P. S. (6) 80.74 Var. W. 9. 50 5/2<sup>nd</sup>  
 Do S. (7 1/2 + 5) 81.20 Var. E. 21.

pen. Dec. Aug. 12 S. 28 1/2 E. 33.  
 6<sup>o</sup> Do 8 S. 57 1/2 E. 30 1/2  
 1/8 bel. S. 1/4 Spruce 18 S. 89 W. 46.  
 S. 1/4 P. N. (5 1/2) 52.34 Var. N. 24.  
 1/8 bel. N. 1/4<sup>o</sup> Elm 10 N. 45 1/2 E. 26.  
 1/8 bel. N. 1/4<sup>o</sup> E. (5 1/2) 41.30 Var. N. 17.  
 N. 1/8 on E. line. Pine 12 N. 19 1/2 E. 16 1/4  
 E. 1/4 P. S. (12 1/4) 40.48 Var. W. 16  
 S. 1/8 on E. line. Elm 16 N. 46 W. 29 1/2

Sec. 27. 32-11. cont.

S. 1/8 on E. line. W. (5 1/2) 41.16 Var. N. 13.  
 pen. N. E. 1/4. Aug. 12 S. 8 E. 34.  
 Do, S. (12 1/2) 20.25. Var. E. 1.  
 1/8 bel. E. 1/4. Aug. 8 S. 81 E. 19  
 Do S. (12 1/2) 20.25-Var. E. 4,  
 pen. S. E. 1/4. Elm 12 N. 15 W. 7 1/2  
 W. 1/8 on E. line. Aug. 14 N. 2 E. 22.  
 Finished Oct. 24.

Sec. 32. 32-12, Oct. 27/84  
 + (3-10)  
 S. N. cor. N. (4 1/2) 40.40 Var. E. 22 4/2  
 N. 1/4 P. E. (5 1/2) 42.37  
 - (1-24) 82.08 Var. N. 2.00  
 S. 1/4 P. N. (6) 40.30  
 - (2-2) 80.20 Var. W. 2.85  
 pen. Dec. Pine str. 30 N. 51 E. 49 3/4  
 5 1/2 (Birch 16 S. 52 1/2 E. 34 1/2

Sec. 4. 31-12, Oct. 30/84.  
 - (3-53)  
 N. 1/4 P. S. (5 1/2) 39.74 Var. E. 270  
 S. N. cor. E. (5) 39.97 Var. N. 28.  
 + 50 (4) 39.40  
 N. 1/4 P. E. 79.39 Var. S. 114 (3-25)

19. Sec. 4, 31-12 continued.

S. 1/4 P. N. (4) <sup>39.94</sup> 75.80 Var. W. <sup>(3-60.)</sup> 222

ben. Sec. Elm 18 North 23

4<sup>+</sup> Aug 11 S, 44 W. 23

S. 1/8 on N. line. Land. 16 S, 28 W. 19.

W. 1/8 on S. line. Bisch 12 S, 2 1/2 W. 40 3/4

Sec. 15, 31-11. Nov. 10/84.

S. 1/4 P. E. (3 1/2) 41.12 Var. S, 80.

Do N. (1 3/4) 39.54 Var. W, 4.

ben. Sec. N. (1 1/2) 40.34 Var. E, 12

E. 1/4 P. W. (6-10) 34.20 Var. S. <sup>(5)</sup> 14

ben. Sec. W. (4 3/4) 40.64 Var. S, 8.

W. 1/4 P. N. (5) 40.00 + did not find the <sup>corner</sup> <sup>(11 1/2)</sup>

E. 1/4 P. S. (13) 39.91 Var. W. 14

1/8 bel. N. 1/4. E. <sup>(+38)</sup> (4 3/4) 33.21 Var. S, 37

1/8 bel. N. 1/4. N. (2) 20.00 + then E,

(5-10) 20.37 to cor.

1/8 bel. S. 1/4. E. (4-40) 37.67 1/2 Var. N. <sup>(28 1/2)</sup>

1/8 bel. N. 1/4. Pine 16 N, 21 E. 30 1/2

Sec 15, 31-11 cont'd. 21

E. 1/8 on S. line. Elm 12 N, 15 E. 43.

Do Do N. (6 3/4) 19.80 Var. W, 6.

1/8 bel. S. 1/4. Pine str. 22 N, 83 E. 20 1/2

S. 1/8 on E. line. Elm 10 S, 76 W. 8 1/2

ben. N. E. 1/4. S. <sup>-1 1/2</sup> (4 1/4) 20.11 Var. E, <sup>(4 1/2)</sup> 3 1/2

1/8 bel. E. 1/4. Elm 12 S, 21 1/2 W. 32

1/8 bel. W. 1/4. Elm 13 N, 40 1/2 E. 20 3/4

N. 1/8 on E. line. Elm 18 N, 71 E. 40

Sec. 14, 31-11.

N. 1/8 on N. line <sup>(+35)</sup> (E. 7) 42.66 Var. S. <sup>(5)</sup> 43.

On above line at 10 ch. V. (8 3/4) at 30 ch. (4 3/4)

1/8 bel. N. 1/4. Elm 11 S, 51 1/2 E. 10 1/2.

Sec. 4, 31-11. Nov. 26/84.

S. 1/4 P. N. (7-50) 79.50 Var. E, 5.

N. W. cor. 16. N. (5) <sup>77.50</sup> 153.00 Var. E. <sup>(4-5)</sup> 79

1/4 P. S. E. (5) 30.00 + 10.00 + 2.18

+ off. S. 5.00 at 30.00 - above

E. 1/8 bel. Dist. from S. 1/4 P. S. to S. E.

21. | 8 + 9, 31-11, continued.

1/4 P. 8, E. (5) 67, 25 and found  
A true Balsams marked 1/4 S.  
Dne 12<sup>in</sup> mtd. on N, E, side.

The other 10 mtd on S, side (nearly)

(10<sup>2</sup> 46)

S. 1/4 P. 8, E. (5) 42, 18 Var. N, 7, 88

(374)

S. N. cor. 16, N. (5) 77, 50 Var. E, 3, 24

N. N. cor. 16, Elm 18 N, 31 1/4 E, 81 1/2

5<sup>o</sup>

Do 12 N, 54 1/2 W, 95 1/2

+ 25

S. N. cor. 9, N. (U-53) 77, 54 Var. E, 55

(134)

N. 1/4 P. 9, Elm 12 N, 59 1/2 W, 57 1/2

5<sup>o</sup>

Do 12 S, 69 1/2 W, 57

(70)

Do E. (74) 82, 20 Var. N, 31

(6 1/2)

N. N. cor. 16, (S, 6 1/4) 77, 76 Var. N, 76

1<sup>o</sup> 47' is the correction for

S. line of 9.

(v. 6-20)

S, E, cor. 9, N. (6) 78, 82, Var. N, 38

E. 1/4 9, S. 1/4 P., N. 1/4 P., + S, N. cor. 9

and N. 1/4 P. 16. Obliterated.

8, 9 + 16, 31-11, continued, 22

E. 1/4 P. Pine 12 N, 25 E, 36

Do 18 S, 39 1/2 W, 52

N. 1/4 P. 9, Elm 8 N, 65 W, 49

Do S, (4) 78, 02 Var. E, 67

S. 1/4 P. 9, Aug. 20 N, 42 E, 62 3/4

5<sup>o</sup>

Elm 18 S, 13 1/2 W, 44 1/2

Sen. Sec. 9, Pine 24 S, 86 E, 47 1/2

5<sup>o</sup>

Elm 12 S, 55 1/2 E, 58 1/2

1/8 hd. N. 1/4, Pine 9 N, 62 W, 51 1/2

N. 1/4 P. 16, Elm 11 N, 83 1/2 E, 58

5<sup>o</sup>

Aug. 16 N, 34 E, 71

S. 1/8 on N. line 9 Spruce 20 N, 33 E, 48

S, E, cor. 8, N, 80 W, with Var. al (4 1/2)

42, 80 Var. S, 5 lbs.

N. 1/8 on N. line 9, Elm 8 S, 88 W, 56

"

Sec. 22, 31-10, Jan. 24/8

E. 1/4 P. N. (6 1/2) 80, 00 Var. N, 3, 48



23.1 <sup>157</sup>  
Sec. 29. 37-11. Dec. 9. /84

N. 1/4 P. S. (5) 80.00 <sup>(5 1/2)</sup> left il.

<sup>158</sup>  
Sec. 30. 37-11.

N. 1/4 P. W. (5) 100.00 <sup>(6 1/4)</sup> left il.

<sup>156</sup>  
Sec. 28. 37-11.

W. cor. S. <sup>-5 1/2</sup> (5) 39.97 Var. E. <sup>(5 1/4)</sup> 380

Do E. (5) 40 + Var. N. about - 1.50

1/4 P. E. (5) 80.00 + left il.

1/8 on N. line. Maple 9 S. 5 1/2 E. 23 3/4.

Sec. 5. 40-11 Jan. 3/85

begin. at the S. W. cor. 33. 41-11.

E. (5) 39.82 Var. S. <sup>(4)</sup> 44.

S. W. cor. 33. N. (4-50) 42.50 + left il.

26 N of S. W. cor. 33.

Do. S. <sup>(4)</sup> (5 1/2) 80.00 + left il.

40 chs. S. of above, N. (5) 20.00 + left il.

Sec. 25. 40-10

mile, on N. bank Eagle River, +  
from N. 30 chs. Did not find <sup>(N. W. cor.)</sup>

Sec. 7. 22-15. Apr. 2/85. /84.

ben. Dec. E. 40.12 Var. N. 6.

Sec. 16. 31-11. May 28/85.

S. 1/4 P. E. 37.00. Then E. 2.00. Found

Birch 24 N. E. and Sugar 12 N. W.

Mkd. for cor. and chopped out.

N. 23 E. is a Birch 11 Mkd. on

S. W. side B. B. c. c. 1611. Birch 12

S. W. axe marks - rotted. This

is nearly N. from E. corner.

66 rods West and 8 rods

N. of S. W. cor. 16 is a Basswood

12<sup>in</sup> chopped out, as though

for a bearing tree. Measured

thence N. (9) 38.50 to 1/4 P. and

then on N. (9) 39.50 to Elm 18

nearly S. and Pine 20 pre-

pared for bearing trees, but

not mkd. 2 rods apart.



25. Sec. 20. 31-11. June 5/85.

S. N. cor. N. (5 $\frac{1}{4}$ ) 42.03 Var. N. 3.

ben. Sec. S. (5) S. 8 $\frac{3}{4}$  E. 40.59 V. N. 19.

$\frac{1}{8}$  hd. S.  $\frac{1}{4}$  { Elm 8 S. 7 $\frac{1}{4}$  E. 13

5<sup>th</sup> { Do 14 N. 70 N. 40 $\frac{1}{4}$

Do. Do. N. (4) 38.90 Var. S. 51

S.  $\frac{1}{8}$  on N. line. Pine St. 30 N. 71 $\frac{1}{2}$  E. 20 $\frac{1}{4}$

Sec. 31. 31-11. June 18/85

N.  $\frac{1}{4}$  P. S. (5 $\frac{1}{2}$ ) 42.34 $\frac{1}{2}$  (3 $\frac{1}{4}$ )  
+ 55 82.26 Var. N. 1.32

S.  $\frac{1}{4}$  P. E. (3-50) 40-10 Var. S. 14. (4 $\frac{1}{4}$ )

E.  $\frac{1}{8}$  on S. line. Aug. 18 N. 34 E. 51 (4)

Do. Do. N. (4 $\frac{1}{4}$ ) 40.10 Var. E. 19 (3 $\frac{3}{4}$ )

From ben. Sec. E. to ben. R. R.

Track 2000.75 ft. + 664.5 ft. to  $\frac{1}{4}$  P.

E.  $\frac{1}{8}$  on N. line S. (6) 41.12 Var. E. 74.

Sec. 6. 32-10. June 30/85

N. N. cor. S. (2 $\frac{1}{2}$ ) 78.16 Var. N. 131 (5 $\frac{3}{4}$ -25)

E.  $\frac{1}{4}$  P. N. (5) 75.00 Var. N. 10.88 (6-40)

N.  $\frac{1}{4}$  P. { Birch 9 N. 89 N. 45 $\frac{1}{2}$

6<sup>th</sup> { Aug. 12 S. 87 E. 46

Sec. 1. 34-10. July 6/85 <sup>126.</sup>

S. N. cor. E. (5) 40.45 Var. N. 44

S.  $\frac{1}{4}$  P. E. (4 $\frac{1}{4}$ ) 50.64 Var. S. 6.74  
+ (7 $\frac{3}{4}$ -40) (3-20)

Sec. 14. 34-10.

N. E. cor. N. (5) 39.13 Var. S. 2.45 $\frac{1}{2}$  (6-10)

Sec. 12. 34-10. July 10/85

E.  $\frac{1}{8}$  on S. line N. (4) 82.50 Var. N. 3.14 (3 $\frac{1}{2}$ )

Do N. { Birch 8 S. 36 E. 31

{ Sugar 6 N. 1 E. 42

Sec. 15. 34-10 Sept. 24/85

N. E. cor. N. (1 $\frac{1}{2}$ ) 39.35 Var. S. 18 (15)

Sec. 30. 32-11.

N.  $\frac{1}{4}$  P. (New) Elm 12 N. 2 $\frac{1}{2}$  N. 32 $\frac{1}{4}$  (40)

Do S. (7 $\frac{3}{4}$ -25) 76.88 (dates on S.  $\frac{1}{2}$ )  
took old line of

ben. Sec. R. Birch 12 S. 89 $\frac{1}{2}$  E. 55

V. 4 { Sugar N. 69 $\frac{1}{2}$  N. 51 $\frac{1}{2}$ .

$\frac{1}{8}$  hd. N.  $\frac{1}{4}$  Lank 22 S. 83 $\frac{1}{2}$  E. 30

4<sup>th</sup> { Lank 10 N. 68 $\frac{1}{2}$  N. 57

$\frac{1}{8}$  hd. E.  $\frac{1}{4}$  Birch 20 S. 31 $\frac{3}{4}$  E. 62 $\frac{3}{4}$

27.

Sec. 30, 32-11, continued.

E. 1/4 P. Pine stp. 20 S, 40 1/2 E, 29 1/4

4<sup>o</sup> Birch 12 N, 26 1/2 W, 24 1/2

N. 1/8 on E. line, Shank stp, 10 N, 41 E, 33 1/3

4<sup>o</sup> Do do 12 N, 87 W, 36.

E. 1/4 P. Angle bed, R.R., 1/4 line S, 89, 58 W.

N. 1/8 on E. line " " " " 1/8 " N, 89-61.

Sec. 4, 30-11 July 13/85

N. 1/4 P. S. (7) 40, 00 Var, N. 34

Sec. 10, 30-12, July 22/85

N. 1/4 P. S. (6) 77, 70 Var, E. 62  
(3-7-50)

Sec. 30, 32-11, Sept. 6/86

Measured E. line 78, 46 long

S. end 2, 15 E. of R.R. (E. rail)

N. " 1, 00 " " " " " "

E. 1/4 P. 1, 57 1/2 " " " " " "

Do N. (5 1/4) 93, 18 Var, S. 96  
(-35) 43, 12 (4 1/4)

N. 1/4 P. Original stps, stg.

28.

Sec. 29, 32-11, Aug. 13/85

S. 1/4 P. N. (5) 80, 40 Var, N. 6,

Do N, 46 1/2 E, (5) 55, 23 N, N, 6,

Sec. 36, 34-10 Sept. 22/85

S. N. cor. E. (5) 41, 50 Var, N, 37  
(43 1/2)

S. 1/4 P. E. (4 1/4) 42, 67 Var, N, 2, 12

Sec. 17, 31-11, Sept. 28/85

S. N. cor. E. (1-10) 86, 58 Var, N, 8,  
(1-50)

At a point equidistant bed, S.

corners Elm stp. 14 N, 80 E, 24

x Pine " 20 S, 28 E, 30

Do. N. (6) 83, 29 Var, N, 10

Do. br. head, 8 x 10 x 24 with + on

top + dishes under it.

3, 43 S. of above Red-

dish head, 6 x 8 x 22 +

+ on top + dishes under it.

x S. (4 3/4) 81, 73 Var, E, 33 1/2  
(35)

15, 28 N. of x br. head, 6 x 8 + 18 +

+ on top.

29.

Sec. 7, 22-15 Oct, 6/85

N. 1/4 P. W. 33.94 Stephen's dist. 33.85

Do S. (692) 40.62 1/2 (dit it.)

Sec. 25, 33-10 Oct, 14/85

N. 1/4 P. W. bank, stp. 18 S. 17 E. 25

5<sup>th</sup> Do stp. 20 N. 49 W. 15

Do W. (5) 40.52 Var. S. 2.85

N. N. cor. Lank, 10 S. 44 E. 15

Do 12 N. 26 E. 12

Do S. (4 3/4) 33.68 Var. E. 1.56

At N. S. bed, 25 &amp; 26 Found N. E.

stp. - no other, as 2.00 chs.

would bring corner in <sup>lake</sup> fence

I set stake S. 30 W. of stp. 20

lks. - on old sec. line.

N. 1/4 P. E. (2) 41.85 Var. S. 7.32

N. E. cor. S. (0) 39.78 Var. W. 58

E. 1/4 P. W. (5) 20.00 + 4.00

N. 1/4 P. S. (1 1/2) 60.00

30.

Sec. 25, 33-10 cont. D.

S. E. cor. W. (3) 39.71 S. 26

Sec. 36, 33-10.

N. 1/4 P. N. (3) 39.95 Var. N. 1.16 to

marked trees which are  
not in the Off. Field Notes

then on N. 11.00 to M. S.

N. 1/4 P. W. bank, 12 N. 45 E. 35 } 1<sup>st</sup>Do 10 N. 50 W. 30 } 3<sup>rd</sup>

M. S. bed. 25 &amp; 36. (E. side lake)

W. bank, down S. 29 E. 15

E. 1/4 P. W. (3) 50.00 to lake.

Sec. 31, 32-11 Oct, 24/85

M. Dec. N. (5) 44.47 Var. N. 18

1/8 bed. N. 1/4 Lank, 18 S. 12 W. 20 (v. 5)

Do, Do, N. (-2) 20.40 + dit it.

Sec. 22, 37-11 Nov, 12/85

N. 1/4 P. Fir stp. and Birch tree stp.

Do E. (4) 89.00 Var. S. 2.64

155

Dec. 22. 37-11. continua.E. 1/4 P. S. (4) 40.74 Var. N. 99 <sup>(2, 3-40)</sup>

N. 1/4 P. S. (5) 80.00 + left il.

Dec. 31, 37-11. Nov. 16/85

N. E. cor. S. (4) 40.94 Var. E. 74

E. 1/4 P. S. (3) <sup>(17 1/4)</sup> 28.80 Var. E. 8.93

Do S. 17 1/4 N. (3) 30.20 left il.

S. 1/4 P. N. (-3) <sup>+ 2-20</sup> 72.96 Var. E. 2.97 <sup>(4)</sup>N. E. cor. N. (-1 1/2) <sup>+ 38 1/2</sup> 100.27 Var. N. 1.19 <sup>(-3 1/2)</sup>N. N. cor. S. (5) <sup>- (2-25)</sup> 39.60 Var. E. 1.67 <sup>(4 1/2)</sup>E. 1/4 P. N. (-1 1/2) <sup>+ 1 1/4 48.28 + 21.12 (-40)</sup> 100.84 Var. S. 2.23

N. line 31. 44.63 + 22.32 + 33.32

pen. Dec. { Lamb. 20 S. 88 E. 10 1/2

3° { Do 12 S. 19 E. 21 1/2

N. 1/4 P. { Birch 12 S. 24 N. 25 1/2

3° { Fir 9 S. 47 E. 17

N. 1/8 on N. line. pedar 11 S. 88 E. 13

Do S. (1/4) 40.10 Var. E. 22

1/8 bed. N. 1/4 Birch 12 N. 53 N. 14

159

Dec. 31, 37-11 contd

pen. N. N. 1/4 N. (-3 1/2) 15.00 to swamp.

1/8 bed. N. 1/4 Birch 9. S. 20 E. 16.

S. 1/8 on E. line. Aug. 8 S. 32 E. 12

Do Do N. (+ 1/4) 25.00 to swamp

N. 1/8 on E. line. (Birch 10 N. 38 E. 9 1/2

Do Do N. (-2 1/2) 46.50 Var. S. 29.

Dec. 31, 41-11. Dec. 9"/85

S. E. cor. N. (6 1/2) 39.36 V. E. 1.625 <sup>(6)</sup>E. 1/4 P. N. (7) <sup>39.43 (6 1/2)</sup> 78.86 Var. E. 16.

Sel. N. E. cor. 1/2 way bet. 1/4 Poston.

S. E. cor. N. (6 1/2) 39.86 Var. S. 19 <sup>(5-3/4)</sup>

S. 1/4 P. N. (6 1/2) 80.00 and left il.

Dec. 29. 41-11.

N. 1/4 P. E. <sup>(-17)</sup> 40.42 <sup>(6)</sup> Var. N. 40 <sup>(6 1/2)</sup>S. N. cor. E. <sup>(-1/2)</sup> (6 1/2) 39.52 Var. N. 36.S. 1/4 P. N. <sup>- 58</sup> (6 1/4) 79.18 Var. N. 1.33 <sup>(5-3/4)</sup>

pen. Dec. { penk. 11. N. 25 N. 4 (V. 6)

1/8 bed. E. 1/4 Pine etc. 22 N. 6 N. 20 1/2

Do Do S. (5 1/2) 22.50 to swamp.

Sec. 29, 41-11, continued.

$\frac{1}{8}$  bel. N.  $\frac{1}{4}$  P. (6 $\frac{3}{4}$ ) 40.08 Var. E, 58

Do. Do. bank, 10 S, 54 E, 28 $\frac{1}{2}$

Sec. 33, 41-11.

S.  $\frac{1}{4}$  P. N. (6 $\frac{1}{2}$ ) 78.76 Var. N, 2.06

Sec. 17, 40-11, Dec. 18/85

Comm. al-M. b. near N.  $\frac{1}{4}$  P.

N. (6 $\frac{1}{4}$ ) 50.64 Var. N, 4.48

N. N. cor. E. (6) 73.10 to E, side surf.

N. N. cor. E. 46.75 + S, 1.44 + sel.  $\frac{1}{4}$  P.

N.  $\frac{1}{4}$  P. (Barnum Pine, stake)

5<sup>o</sup> 20 S, 88 $\frac{1}{2}$  E, 5 $\frac{1}{2}$

Do S, (5) through the pine.

Sec. 8, 27-11, Jan. 26/86

N.  $\frac{1}{4}$  P. S. (6 $\frac{1}{4}$ ) 80.30 Var. E, 19.3

Do N. (5 $\frac{1}{2}$ ) 39.60 Var. 43

N.  $\frac{1}{8}$  on N. line, bank, N, 18 $\frac{1}{2}$  N, 19 (5 $\frac{1}{2}$ )

Do Do, S, (4 $\frac{3}{4}$ ) 40.00 Var. E, 17.

ben. Sec. N. (6) 39.74 Var. S, 24

Sec. 8, 27-11, continued.

N.  $\frac{1}{4}$  P. S. (4 $\frac{3}{4}$ ) 39.87 Var. N, 33

S. N. cor. N. (5 $\frac{3}{4}$ ) 20.00 + bell-al.

Sec. 36, 33-10 Feb. 23/86

Comm. al-M. b. near N.  $\frac{1}{4}$  P.

Hence N. (5) 44.47 Var. S, 2.31

N. N. cor. S, 13 N. (-40) to lake.

N.  $\frac{1}{8}$  on N. line (-40) S, 9 N. to lake.

Sec. 6, 22-15, Inch. 11/86.

ben. Sec. N. (5) 33.94 Var. N, 86 $\frac{1}{2}$

Sec. 30, 31-12, Apr. 19/86

S. N. cor. N. E. tree, N. N. dtp. S. N. dtp. dtp.

Do Gray haul, 10 x 10 x 30 + out of.

Do E. (5 $\frac{1}{4}$ ) 44.02 Var. N, 39.

S.  $\frac{1}{4}$  P. N. (4) 79.48 Var. N, 1.11

N.  $\frac{1}{4}$  P. E. (5 $\frac{1}{4}$ ) 85.93 Var. N, 1.75

E.  $\frac{1}{4}$  P. (Ing. dtp. 9 N, 9 $\frac{1}{2}$  E, 23)

6 $\frac{1}{4}$  - Elm " 11. N, 89 $\frac{1}{2}$  E, 30

ben. Sec. (Ing. 6 N, 1 $\frac{1}{2}$  E, 37 $\frac{1}{2}$ )

5<sup>o</sup> (Do 5 S, 24 $\frac{1}{2}$  N, 39 $\frac{1}{4}$ )



Sec. 30, 31-12 continued.

This survey was made  
to cut 80 acres off S. side S. 1/4

N. 1/4 cor. 80. Boul.  $8 \times 12 \times 20$  + out of  
( $4^e 35'$ )

Do E. ( $4\frac{3}{4}$ ) 43.70 Var. S. 32

N. E. cor. 80 Birch 9 S. 69 N.  $14\frac{1}{2}$

6<sup>+</sup> Aug. 16 N.  $16\frac{1}{2}$  N.  $31\frac{1}{2}$

N. 1/4 P. N. ( $2\frac{1}{2}$ ) 39.96 Var. E. 13.

Sec. 16. 31-11. Apr. 24/86  
( $3\frac{1}{2}$ )

S. E. cor. N. (3) 36.96 Var. S. 17

E. 1/8 on S. line Pine 20 S. 10 E.  $33\frac{3}{4}$

S. E. cor. Gray Boul.  $6 \times 7 \times 22$ .

Sec. 9. 33-10. Apr. 28/86

N. 1/4 P. N. E. tree + S. E. stp. stp.

Do S. ( $5$ ) 34.55 to lake. Offset  
( $1^e 15'$ )

N. 1. 20 ch. Angle  $6^+ 30'$  Dial across

Lake 8. 66. Then 39.30 to the S. 1/4 P

Whole did: 82.51 Var. E. 1.74

N. E. tree + S. N. stp. stp.

Sec. 18, 33-11. Apr. 29/86

S. 1/4 P. N. N. tree. S. N. stp. stp.  
40.10

Do N. (5) 76.64 Var. N. 10

N. 1/4 P. E. ( $3\frac{1}{2}$ ) 42.05 + 40.37 Var. S. 24  
( $3\frac{1}{2}$ )

E. 1/4 P. S. (6) 39.77  $\frac{1}{2}$  Var. E. 58  
( $3\frac{3}{4}$ )

1/8 hd. E. 1/4 bank. 10 N. 60 N.  $21\frac{1}{4}$

Gen. Sec. 1/8 bank. 7 N. 7 N.  $23\frac{1}{2}$

5 Do 14 S. 6 E. 16

1/8 hd. S. 1/4 bank. 18 S. 62 E. 33

Do. do. E. ( $3\frac{1}{2}$ ) 40.62 Hat it.

1/8 hd. N. 1/4 bank. 12 N. 60 E.  $22\frac{1}{2}$

Do. do. E. (4) 40.75 Var. S. 1.31

E. 1/4 P. N. ( $5\frac{1}{4}$ ) 39.61 Var. N. 123

N. E. N. E. 18. Extra farming land

3 forties next south S. P. L.

N. N. N. N. 17. " " "

Sec. 9. 33-11. May 6/1886

S. 1/4 P. N. ( $5$ ) 83.12 Var. N. 2.07  
( $1^e 23'$ ) 40.59 ( $3^e 25'$ )

N. 1/4 P. E. ( $5$ ) 83.22 Var. N. 1.00  
( $41'$ ) 40.48 ( $5^e 40'$ ) ( $5\frac{1}{2}$ )



37.

Sec. 9, 33-11, continued.

S. 1/4 P. W. (4 1/2) 38, 63 <sup>only 1 flag</sup> N. 1/4 E.

ben. Sec. 9, 16 S, 65 E. 12

Do 14 S, 18 W, 13 3/4

N. 1/4 P. N. (4) 43, 61 Var. W. 60 <sup>(3-50)</sup>N. 1/8 on N. line, E. (5 3/4) 40, 61 Var. N. 47 <sup>(50)</sup>

1/8 hd. N. 1/4 W. 12 N, 88 W, 2 1/2

1/8 hd. N. 1/4 W. 11 N, 83 1/2 W, 25

1/8 hd. S. 1/4 Do 11 S, 40 1/2 W, 21

Sec. 31, 36-11. May 15<sup>th</sup>/86S. E. cor. Original dump <sup>ste.</sup>Do. N. (5 1/4) 157, 92 Var. E. 50 1/4 <sup>+ 11) 78, 96 (14-55) (N, 4 1/2)</sup>S. E. cor. 29, 36-11 <sup>+ 11) 81, 04 (4-25) (4-5)</sup>

N. (4 1/2) 171, 70 1/2 Var. N. 56

N. E. cor. Fir 6 N, 10 3/4 W, 21

30 Norway S, 27 W, 8 1/2

39, 30 Lang. 7 S, 74 1/4 W, 34

31, 32 Do 9 S, 6 E, 28

N. 1/8 on E. line, 30, Pine 16 S, 34 W, 13 3/4

38.

Sec. 30, 36-11, continued.

Common. 14 lbs. S. of N. E. cor. 30,

W. (8-40) 25, 50 <sup>+ (2-25)</sup> then off

south 98 lbs. Then head-

parallel with above course

1, 04 to M. b. Trees etc. + O. N.

From M. b. on N. side of lake, on

N. line Sec. 30, 36-11.

E. 1/4 P. 30 Pine etc. 12 S, 42 W, 25 1/3

Do " 12 S, 25 3/4 W, 5

Do N. (4) 90, 53 Var. S. 3, 09

N. E. cor. N. (11 5) 26, 54 <sup>20, 89 20, 80</sup> corrected.

ben. 30 Norway 16 S, 28 E, 13 1/2

V. 50 Do 16 N, 86 1/2 W, 11 1/4

1/8 hd. E. 1/4 W. Pine 11 N, 65 W, 15

Do - N. (4 1/2) to the Lake shore.

S. 1/4 P. Lamb, 12 S, 88 E, 16 1/4

Fir 10 N, 35 W, 10 1/4

37

Sec. 21. 47-47. May 25/86.

penn. at-M. b. on E. bank

Montreal river. (near S. E. cor.)

N. (3) 38.31 Var. N. 1.41

1886. June 3<sup>rd</sup> Sec. 9. Bessemer Mich.

S. E. cor N. (Tr.) 39.85 Var. S. 6.14

S. 1/4 P. Found marks on Spruce  
which was lying down +  
rotten. Found rod of iron

Dp. Sugar 12 N. 2 1/2 N. 48 1/2

Kutter's corner S. 46 N. 2 3/4 lbs.

S. E. cor. Tri-angular gray head  
der 12 x 12 x 12 and  
38 in long, with + on  
top. Stone coal 1 in diam.  
under stone.

Angle at S. E. cor. 9. 90° - (43')

" bel. E. line of 9. + Long-  
year St. is 18' less than 90°.

12

Sec. 30. 36-11.

S. 1/8 on E. line. Spruce 10 N. 33 N. 36

N. 1/8 on S. line. Lank. 10 N. 74 N. 3 3/4

Sec. 6. 31-11. July 26/86

S. 1/4 P. S. E. tree on N. N. Sp. Stg.

New Lank. 10 S. 87 N. 2 1/2

Sec. 35. 33-11. July 28/86

N. 1/4 P. S. (-3) 39.52 Var. E. 1.14

S. 1/4 P. N. (5) 75.34 40 Var. N. 14.42

S. N. cor. E. (6) 80.06 Var. S. 1.89

S. 1/4 P. Aug. 7 S. 88 N. 3 1/4

5° Spruce 12 N. 66 1/2 E. 32 1/4

N. 1/4 P. E. (2) 39.50 to center.

ben. Sec. Lind 9 N. 8 N. 15 1/2

5° W. bank. 14 S. 75 E. 8.

1/8 bed: S. 1/4 W. bank. 24 N. 74 E. 16

Do do N. (4 3/4) 39.86 Var. N. 16

Sec. 23. 31-11. Aug 9 1886

S. 1/4 P. N. (5 1/4) 83.30 Var. N. 5.57

Sec. 13, 34-10 Sept. 21/86

N. E. cor. S.  $(4\frac{3}{4})$  21, 44 Var. E. 43

N. 1/8 on E. line S.  $(3\frac{06}{35})$  21, 54 " E. 8

Do. do. W.  $(3\frac{1-9}{34})$  38, 50 Var. S. 75

S. line N. E. N. E. makes with  
R.R.R. of N.  $\pm 8^{\circ} 10'$ .

30 ft. at right angles with 1/8  
line is 30 ft. + 3 in on R.R. rail  
N. E. cor. N. (Gr.) 38, 20 Var. S. 3 lks.

Sec. 35, 39-11, Oct. 11/86

S. 1/4 P. N. (2) 40, 38 to lake, Off-  
set - E. 2.00 angle N. 8-10 W. Dist.  
13, 93 Then N. 9, 04 Total 63, 30

Var. E. 77.  $(1-55)$   
Ogd. stps. stps.

At 30, 00 offset - E. 2, 50

Sec. 4, 39-11, Oct. 15/86

S. E. cor. N. E. tree stp. N. N. tree lying down

Do N. (6) 1 mile. Then N. 15, 00

Then N. 54, 65 to m.b. on E. side river.  
Var. N. 3, 80

Sec. 4, 39-11, continued.

S. E. cor. N. (6) 33, 93 Var. S. 1, 16

S. 1/4 P. Fir stp. + stump, tree,

E. 1/8 on S. line Birch 12 S. 78 ft. 22 (V. 4)

Do. do. N. (4) through the pine.

Sec. 1, 39-10, Oct. 18/86.

Comm. at m.b. on S. side Lake  
Thence N. (4) 37, 50 then N. 17, 50

Then N. (4) 42, 50 + found nothing.

" N. (4) 38, 50 " " "

Sec. 28, 41-11, Oct. 22/86

E. 1/4 P. N.  $(3\frac{45}{34})$  39, 79 Var. N. 52  $(5^{\circ})$   
 $(4-20)$

N. 1/4 P. N. (5) 39, 46 Var. E. 1 1/2

S. 1/4 P. N. (5) 20, 00 + then N. (4 1/2) 15 chrs

Sec. 34, 41-11, Oct. 23/86

S. E. cor. N.  $(3\frac{58}{34})$  40, 45 Var. N. 68  $(V. 4)$   
 $(4 1/4)$

E. 1/4 P. N. (3) 39, 83 Var. N. 11 1/2 low  $(N. 1/2)$

Sec. 35, 39-11, Oct. 28/86.

N. E. cor. S.  $(5\frac{4-7}{5})$  75, 22 Var. E. 5, 40  $(V. 5-20)$

Sec. 1. 40-10. Oct. 25/86

N. E. cor Pine Stg, Birch gone.

Do N. (5 1/2) 80.00 + found nothing

Al-40 chs. S. (F) 38.50 + left it.

N. 1/4 P. Sng. 8 S. 62 1/4 E. 11. (v. 5 1/2)

Sec. 34. 39-11. Oct. 29/86

S. 1/4 P. N. (5) 26.50 to lake + left it.

Sec. 14. 38-11. Oct. 30/86

S. 1/4 P. N. (4 1/2) 80.00 + found nothing

Al-46.50 offed E. 100 lbs. al

35.20 offed N. 150 lbs.

Sec. 9. 32-11. Nov. 8/86

N. N. cor S. (5) 50.72 Var. N. 3.34

N. 1/4 P. (5) 80.46 Var. S. 5:74

N. 1/4 P. S. (6 1/2) 41.46 to E. + N. 1/4 line

N. 1/8 on N. line, Sng. 14 S. 30 E. 33 1/2 N. 5

Do. do. E. (2) 41.50 Var. N. 3 lbs

Sec. 28. 30-11. Feb. 8/87.

N. 1/4 P. E. (5) 80.50 Var. N. 66 (4 1/4)

Sec. 34. 32-11. Nov. 12/86

N. 1/4 P. E. (5) 92.00 Var. S. 20

Sec. 33. 32-11.

E. 1/4 P. N. (5) 81.34 Var. N. 3.83

Sec. 35. 38-11 Nov. 16/86.

S. E. cor N. (5) 55.00 + left it.

N. E. cor N. (-5) 161.90 Var. N. 17.23

S. N. cor N. (5) 160.70 Var. E. 3.85

N. N. cor. (bank. 10 S. 23 E. 17

5<sup>th</sup> Pine 26 S. 40 N. 5

N. E. cor. S. (5) 39.58 Var. 3

N. 1/8 on E. line. (bank. 12 S. 40 E. 10

Do do N. (-1) 20.30 to a stake x

E. 1/8 on N. line, Birch 16 N. 86 E. 13 1/2

Do. do. S. (5) 19.90 to a stake x

Sec. 31. 32-11. Nov. 24/86.

E. 1/4 P. N. (5) 80.16 Var. S. 1.55

S. 1/4 P. N. (5) 80.12 Var. N. 1.55

N. 1/4 P. S. (5) 39.59 Var. N. 31

Sec. 31, 32-12, Nov, 24/86

S. 1/4 on N. line. Aug. 10 S. 3 N. 12

Do. do (5) 42.61 Var. N. 61

ben. Sec. Birch 20 N. 73 N. 30 1/2

V. 5<sup>+</sup> (Do 11 N. 75 E. 37

1/8 bel. S. 1/4<sup>10</sup> Aug. 10 N. 75 E. 14 1/4

N. N. cor. S. (5 1/4) 39.50 Var. E. 27

Sec. 36, 32-11. (Allen's cor.)

S. 1/4 P. N. (8 1/2) 80.00 Var. N. 5.00

999 Sec. 28, 36-10. Dec. 7<sup>11</sup>/86

N. 1/4 P. S. (4 1/2) 84.00 Var. E. 2.63

E. 1/4 P. S. (4) 41.86 Var. E. 1.95

S. E. cor. N. (4) 81.70 Var. N. 2.04

S. 1/4 P. (Norway 18 N. 26 N. 32

New<sup>3+</sup> (Do 18 N. 17 N. 14 3/4

E. 1/8 on S. line. Pine 13 S. 69 N. 13 v. 3.

Do. do. N. (U) 20.70 to stake x.

S. 1/8 on E. line. Aspen 7 S. 50 E. 8. v. 3

Do. do. N. (6) 20.50 to stake x.

3/ Sec. 16, 35-9. Dec. 14/86

E. 1/4 P. N. (5) <sup>+1-12</sup> 39.50 Var. N. 1.65

N. 1/4 P. N. (5) 20.00 and left il.

S. E. cor. N. (5) 39.53 Var. S. 11.

S. 1/4 P. N. (4 1/2) 39.10 Var. N. 41.

S. 1/4 P. N. (5) <sup>-51 38.38</sup> 77.70 Var. N. 116.

N. 1/4 P. N. (5) 39.33 Var. N. 54

S. N. cor. N. (4) 37.88 Var. E. 20

S. 1/8 on N. line. N. (5) 39.75 to stake x

x N. (5) to creek bottom.

E. 1/8 on S. line. S. (4 1/2) 20.00 + left il.

S. 1/4 P. S. (4 1/2) 20.00 and left il.

ben. Sec. Birch 11 S. 89 E. 20 1/2

V. 5. (Maple 8 S. 40 E. 33 1/2

1/8 bel. S. 1/4<sup>10</sup> N. (5 3/4) 19.55 to a stake.

N. 1/8 on S. line. N. (4) 19.10 " above "

10/ Sec. 9, 35-9.

S. 1/4 P. N. (4) 40.00 + left il.



Dec. 10, 35-9.

(v. 4 1/2)

S. N. cor. N. (5) 38.45 Var. W. 3.14

N. 1/4 P. E. (5) 39.38 to 1/4 line.

S. 1/4 P. N. (4) 77.78 Var. N. 3.08

1/8 hd. N. 1/4 S. (1) 19.50 + left it.

Sec. 1. 39. - 8 Jan. 4/87

S. N. cor. E. (4) 40.02 Var. S. 2.8

Do N. (4) 39.68 Var. N. 4.0

Do N. (4) 39.61 Var. E. 4

3/8 on N. line E. (4 1/2) 20.00 to stake

N. 1/4 P. E. (4 1/2) 20.00 to stake

X S. (3 1/2) 19.50 " "

E. 1/8 on S. line 2. N. (4) to swamp.

Sec. 25. 39-8. Jan. 5/87

N. E. cor. N. (4) 40.00 found no 1/4 P.

20 ch. N. of N. E. cor. S. (5) 20.50 + left it.

29.30, 31 + 32.34-10. Jan. 24/87.

N. 1/4 P. 32. S. (5) 48.02 Var. N. 3.42

S. 1/8 on N. line Tank 11 S. 67 E. 6.

Sec. 32. 34-10. cont.

(3 1/2)

N. 1/4 P. E. (4) 80.77 Var. N. 3.30

N. 1/4 P. E. (4) 79.00 Var. N. 18.90

N. B. There are 2 1/4 P. on E. line.

Open Sec. S. (2) 37.00 Var. N. 1.3

1/8 hd. S. 1/4 N. (3 3/4) 40.36 Var. N. 3.6

N. 1/4 P. N. (5) 39.80 Var. N. 1.12

Sec. 30. 34-10.

(4-5)

S. E. cor. N. (4) 82.58 Var. E. 2.31

E. 1/4 P. Ry. Birch 10 N. 5.5 E. 14.

Sec. 25. 31-9. Feb. 10/87

N. E. cor. N. (3 1/2) 77.64 Var. S. 7.10

N. 1/4 P. (could not find it).

Do. (New) Spruce 8 S. 45 E. 34

3 1/2 Elm 8 S. 55 N. 18

E. 1/8 on N. line Tank. 7 S. 43 N. 22

Sec. 32. 34-9 July. 20/87

N. 1/4 P. N. (6) 39.37 Var. S. 1.96

Do E. (6) 40.58 Var. N. 3.12



Sec. 2, 31-11, May 9/87

E.  $\frac{1}{4}$  P. N. (5)  $83.12$  Var. N. 3, 80 <sup>+2 1/2 38.64</sup> (V. 4)

S.  $\frac{1}{4}$  P. N. (2)  $75.60$  Var. N. 2, 42 <sup>-(1-50) 40.44 + 18 59</sup> (Var. 2 1/2)

ben. Sec. Pine stp. Double N. E. stp  
v. 5. Do do 20 N. 79 N. 15

$\frac{1}{8}$  hid N.  $\frac{1}{4}$  Pine 10 N. 73 E. 12

$\frac{1}{4}$  N.  $\frac{1}{4}$  Birch 16 S. 66 <sup>1/2</sup> N. 4

Sec. 31, 31-11, June 2/87

ben. Sec. S. (5-12) 39, 90 Var. E. 9 1/2 <sup>(4)</sup>

Do N. (5-12) 42, 91 Var. N. 6 <sup>(V. 6)</sup>

N.  $\frac{1}{4}$  P. Stk. gray boulder 6 x 8 x 16

with + on top, and 4 bricks

under it. a square hole under  
brick, filled with charcoal.

S.  $\frac{1}{4}$  P. N. (5)  $42.98$  Var. S. 62 <sup>(5-12)</sup> <sup>(6 3/4)</sup>

N.  $\frac{1}{4}$  P. N. (5-12) 39, 30 Var. E. 38 1/4 <sup>(5-12)</sup>

N.  $\frac{1}{8}$  on N. line. Elm 11 S. 67 1/2 N. 5-5

Do do E. (8) 43, 06 Var. S. 9 1/2

ben. Sec. N. (5-12) 42, 26 Var. E. 1 1/2

Sec. 31, 31-11 contd.

$\frac{1}{8}$  hid. N.  $\frac{1}{4}$  Elm 12 S. 84 1/2 N. 17

$\frac{1}{8}$  hid. N.  $\frac{1}{4}$  Elm stp. 11 N. 73 3/4 N. 53

Do do S. (5-14) 39, 66 Var. E. 2 1/2

N.  $\frac{1}{8}$  on S. line. Maple 8 N. 10 N. 38 1/2

ben. S. N.  $\frac{1}{4}$  Elm 16 S. 47 N. 45 v. 6.

Do do E. (5-14) 20, 00 Var. N. 21.

Sec. 22, 32-10 June 29/87

N.  $\frac{1}{4}$  P. S. (5-14) 82, 50 Var. E. 1, 25 <sup>(5-3/4)</sup>

S. N. cor. Trees down <sup>(V. 6 1/2)</sup>

Do. New Spruce 18 N. 26 1/2 N. 48 1/2

Do E. (3) 82, 18 Var. S. 16 1/2 <sup>(V. 3)</sup>

S. E. cor. Trees lying down,

Do. New Spruce, 18 S. 13 1/2 N. 44 1/2

S.  $\frac{1}{4}$  P. Dead Pine 18 N. 23 E. 58

6 1/2 Pine stp. 12 N. 27 1/2 N. 75

Sec. 27, 32-10.

S. N. cor. E. (5)  $41.22$  Var. N. 1, 29 <sup>(1-7/8)</sup> <sup>(4-10)</sup>

Do N. N. tree gone. Trees stp. at

S.  $\frac{1}{4}$  P. Red-dead.

Sec. 1, 34-10 Aug 9/87

S. 1/4 P. N.  $(-1 \frac{-27}{-2 \frac{3}{4}})$  44.69  $(-3-50)$   $(-2 \frac{1}{4})$   
85.62 var. N. 2.18

E. 1/4 P. N.  $(8 \frac{1}{4})$  87.90 var. S. 2.36  
46.16  $(8 \frac{1}{2})$   $(0.9)$

S. N. cor. N. (0) 42.12 var. N. 1.70

ben. Sec. Sugar 10 S. 73 1/2 E. 44

5° Birch 14 N. 51 E. 50 1/2

1/8 bel. S. 1/4<sup>o</sup> Triangular granite  
boulder 2 1/2 x 3 x 28 + outcrop.

1/8 bel. S. 1/4<sup>o</sup> E.  $(9 \frac{1}{2})$  24.19 var. N. 12

1/8 bel. E. 1/4<sup>o</sup> Birch 6 N. 57 N. 29 1/4

Do do S.  $(-1)$  42.40 var. E. 41.  
 $(-33)$   $(-1, -4)$

Sec. 12, 34-10. Aug. 16/87

S. E. cor. N.  $(-3)$  85.60 var. E. 54  
 $(-3-10)$

N. E. cor. The bearing trees called  
for here are 1 mile N., & vice versa

N. E. cor. New Birch 12 S. 38 E. 35-

E. 1/4 P. Trees not agree with  
field notes and I discarded them

E. 1/4 P. Birch 14 S. 7 1/2 N. 29 1/2

5° bomb 6 N. 11 N. 43 1/2

Sec. 12, 34-10 cont.

E. 1/4 P. N.  $(8 \frac{1}{4})$  22.37 var. N. 3 1/2

Sec. 7, 34-11.

N. 1/4 P. E.  $(3 \frac{1}{2})$  78.38 var. 1.56  
 $(3-20)$

E. 1/4 P. New. Aug. S. 50 E. 22 1/2

Sec. 31, 31-11, Aug. 25/87.

E. 1/8 out. dim. S.  $(4-40)$  41.15 var. E. 10  
 $(4 \frac{1}{2})$

1/8 bel. N. 1/4<sup>o</sup> E.  $(4)$  40.56 var. S. 5

ben. N. E. 1/4. Birch 7 S. 41 E. 38 1/2

Sec. 16, 36-12 Aug. 30/87

S. 1/4 P. N.  $(5)$  15 lathies & left ill.

x. at 40.00 on the above line

E.  $(5 \frac{1}{4})$  44.38 var. S. 29.3

1 ch. N. of x N.  $(7 \frac{3}{4})$  15.00  
& left ill.

\* At 20.50 N. of S. 1/4 P.

E.  $(8 \frac{1}{2})$  5.00 across ridge

\* N.  $(7)$  29.00 to flowage

From 20 chs. W. of \*

N.  $(5 \frac{1}{4})$  20.25. Thence

N.  $(7 \frac{3}{4})$  to flowage.

Sec. 16. 36-12 could  
 From 61 chs. N. of S,  $\frac{1}{4}$  P.  
 N. ( $7\frac{3}{4}$ ) 20.00 to flowage  
 N. line + most of N. line  
 in flowage. Only found  
 S.  $\frac{1}{4}$  P., S. E. cor. + E.  $\frac{1}{4}$  P.  
 S.  $\frac{1}{4}$  P. 1 chit to far S.?

Sec. 3. 30-11. Sept. 15/87  
 N.  $\frac{1}{4}$  P.  $\left\{ \begin{array}{l} \text{E. (4)} 81.15 \text{ Var. N. } 2.28 \\ \text{+ } 23 \quad 39.50 \quad \text{(4-40)} \\ \text{S. } \frac{1}{4} \text{ P. N. (4}\frac{1}{2}) 90.95 \text{ Var. E. } 60 \\ \text{N. N. cor. E. (4) 81.58 \text{ Var. N. } 44 \\ \text{N. } \frac{1}{4} \text{ P. } \left\{ \begin{array}{l} \text{Elm } 16 \text{ N. } 53\frac{1}{2} \text{ W. } 58\frac{1}{2} \\ \text{V. 4. } \text{Ing. } 13 \text{ S. } 67\frac{1}{4} \text{ W. } 77\frac{1}{4} \\ \text{+ (1-34)} \quad \text{(2-25)} \quad \text{(23/4)} \\ \text{N. } \frac{1}{4} \text{ P. E. (2)} 81.15 \text{ Var. S. } 2.22 \end{array} \right. \\ \text{Rem. Sec. } \left\{ \begin{array}{l} \text{Pine stp. } 36 \text{ N. } 45\frac{1}{2} \text{ W. } 56\frac{1}{4} \\ \text{4} \text{ } \text{Do. do. } 26 \text{ N. } 25\frac{1}{2} \text{ W. } 56\frac{1}{4} \\ \text{19.92} \\ \text{N. } \frac{1}{4} \text{ P. N. (4) } 51.90 \text{ Var. E. } 10 \\ \text{N. } \frac{1}{2} \text{ on N. line } \text{Ing. } 20 \text{ N. } 75 \text{ E. } 58\frac{1}{4} \\ \text{Do. Do. E. (3-47) } 39.90 \text{ Var. S. } 13 \end{array} \right.$

Sec. 3. 30-11. cont<sup>d</sup>  
 $\frac{1}{4}$  N. of ben.  $\frac{1}{2}$  bank. 10 S.  $62\frac{1}{4}$  E.  $66\frac{1}{2}$   
 $\frac{1}{2}$  m. N. " " Ing. 10 N.  $40\frac{1}{2}$  W. 55.  
 Sec. 17. 31-11. Oct. 8/87  
 Comm. 25 lbs. N. of S. N. cor.  
 — on the E. rail of R. R.  
 Thence N. ( $4\frac{1}{2}$ )  $80.86$  on track.  
 N. N. cor. is  $26\frac{1}{2}$  E. of E. rail  
 N.  $\frac{1}{4}$  P. could not find it.  
 5<sup>th</sup>  $\frac{1}{2}$  bank. 12 N.  $16\frac{1}{2}$  W. 24  
 New. Spruce 12 N. 29 E.  $19\frac{1}{2}$  (10')  
 N.  $\frac{1}{4}$  P. E. ( $\frac{1}{4}$ )  $84.41$  Var. N. 17  
 Spencer's S.  $\frac{1}{4}$  P. N. 39.83.  
 Sec. 17. 31-11. Oct. 10/87  
 S. E. cor. N. (N.) 36.20 to R. R. R. of N.  
 Do N. (..) 18.13 " bor. of 60 A.  
 Angle at S. E. cor. Sec.  $89^{\circ} 22'$   
 N. side along R. R. track 18.78  
 angle at R. R., N. of S. E. cor.  $68\frac{1}{4}$   
 Surveyed for Wood, Boussette + Daskum.

Sec. 7. 32-11. Nov, 12/87

N. 1/4 P. S. (7<sup>3/4</sup>) 41.16 Var. E. 10.

1/8 bed. N. 1/4. Aug. 12 N. 73 1/2 E. 31 1/2  
(V. 6)

Do. Do. E. (6) 40.14 Var. S. 9. (5-11) (7 1/2)

N. E. cor. S. (6) 40.58 Var. E. 147 (2-6)

N. 1/8 on E. line. Elm 12 N. 20 N. 2.

Sec. 13. 32-11. Nov, 15/87

N. E. cor. N. (7) 80.86 Var. S. 8.95  
(V. 7) (-6-22)

N. W. cor. Sugar 12 N. 87 N. 8. v. 5.

N. 1/4 P. Did not find any.

Do { Aug. 7 N. 77 N. 15 3/4

Do { Do 6 S. 22 1/2 N. 17 3/4

E. 1/8 on N. line. Hemk. 11. S. 48 1/2 E. 21 1/2

Sec. 24. 38-11. Dec, 6/87

S. W. cor. N. (6) 80.48 Var. N. 108 1/2  
40.24 (6 1/4) (6 3/4) (V. 4 3/4)

N. W. cor. E. (5) 40.87 Var. N. 2.47  
(-3 1/2) (V. 5)

Do O. (5) 25.25 1/2 Var. N. 70.  
E. (-1-35) 20.83

N. 1/4 P. S. (5 1/2) 83.80 Var. E. 78 (5-50)  
-32) 43.17 ± change in E. 1/4 P.

S. E. cor. N. (5) 39.40 Var. E. 33  
+30)

Sec. 24. 38-11. cont. 54.

S. 1/4 P. { Birch 20 N. 8 1/2 E. 33

5 { Maple 8 S. 48 N. 26  
40.57 (2 3/4)

E. 1/4 P. W. (-1 3/4) 81.33 Var. N. 7.

N. 1/4 P. { Hemk. 24 N. 29 3/4 E. 26

5 { Do 24 58 3/4 E. 26 1/2

N. 1/8 on N. line. Hemk. 6 N. 69 E. 31 1/2

ben. Sec. { Fir 10 N. 88 1/2 E. 7 3/4

5 { Birch 11 N. 68 N. 30

S. 1/8 on E. line. Aug. 18 N. 42 1/2 N. 34

Do do N. (-1-25) 40.61 Var. S. 15 1/2  
(-1-45)

1/8 bed. N. 1/4. Cedar 11 N. 5 E. 34

Do do N. (5-10) Var. N. 44  
42.32  
+26

N. 1/8 on N. line. E. (1/4) 20.60 Var. S. 16

N. 1/8 on N. line. Birch 11 S. 58 3/4 E. 17

5 { Pine 10 N. 36 1/2 N. 20 1/2

N. B. The center of this section

should be 3 1/2 links farther north

owing to a mistake in my copy  
of the 1st field notes.

57. Sec. 28. 31-11. May 2<sup>o</sup> 1888.

N.W. cor. E. (3 1/2) on old transit line

40.63 Var. S. 10<sup>in</sup> (3 1/2)

N. 1/4 P. Birch & N. 76 W. (V. 2<sup>o</sup>)

Sugar trying down

N. 1/4 P. S. (2<sup>o</sup>-250 38.71 V. E. 3 lks

ben. Sec. W. ( ) 40.79 Var. S. 2 "

N. 1/8 on N. line E. (2 1/4) 40.66 1/2 Var. S. 1.96

1/8 bel. N. 1/4<sup>e</sup> Aug. 7 N. 15 E. 10 1/2 V. 5<sup>o</sup>

N. 1/8 on N. line. Aug. 6 S. 37 W. 35

Do Do S. (3) 39.55 1/2 Var. E. 44 1/2

1/8 bel. N. 1/4<sup>e</sup> Aug. 10 North 68 v. 5<sup>o</sup>

ben. N. 1/4. Aug. 10 S. 58 1/2 W. 37 1/2

N. W. cor. S. (2-5) 30.16 bid. it (2 1/4)

S. side Sams Randall's 5 07

" " Sammicks 3.37

N. " " 1 68

W. " Hanks's 5 34

W. " Sammicks 5 36

W. " Randall's 5 41

Sec. 32. 31-11. May 21/88.

N. 1/4 P. S. (4 1/2) 79.40 Var. E. 60

N. 1/4 P. E. (Ln.) 14.45 1/2 to cen. Supr. St

Do Do " 40.94 1/2 ben. Sec.

Sec. ben. Aug. 11. N. 15 3/4 W. 57 1/2 v. 5<sup>o</sup>

W. 1/8 on N. line. S. (Ln.) 39.50 Var. E. 5.

Bryant's strip 2.53 chs. wide.

Al-S. E. cor. of it

Sugar 10 N. 36 W. 58.

Al-N. E. cor. angle 90<sup>o</sup>

" N. W. " " 90<sup>o</sup> ± 2<sup>o</sup> 48'

Sec. 8. 30-12. May 28<sup>o</sup>/88

N. 1/4 P. E. (5) 40.00 Var. S. 6 (3 1/2)

1/8 bel. N. 1/4<sup>e</sup> N. (5 1/2) 39.68 Var. E. 96

N. W. cor. Alter. stg. + notes O. K.

New. Aug. 16 S. 10 E. 44 1/2 N. 5<sup>o</sup>

N. W. cor. E. (5) 39.60 Var. S. 43, v. 5<sup>o</sup>



Road.

Sec. 16, 34-10. June 4/88.

(1.) 4.00 chs. S. of N. 1/4 P.

Thence E. (5) 15.00 chs. (2.)

" N. 70 E. 8.50 " (3.)

Thence 4.00 chs. S. of N. 1/4 P.

Thence N. 55 W. 8.50 chs. (4.)

" N. 76 W. 7.50 " (5.)

" S. 70 W. 4.50 " (6.)

" S. 84 1/2 W. 24.60 to Sec. cor.

" N. (4) 44.72 Var. S. 46. (v. 4 1/2)

" N. (4) 49.27 " N. 128 (v. 2-50)

at 1. Hemlock 16 S. 1 E. 38 1/2

" 2. Ironwood 7 S. 18 E. 38

" 3. Larch 9 N. 33 1/2 E. 42 1/2

" 4. Maple 12 N. 5 E. 30

" 5. Fir 8 N. 5 1/2 E. 32

" 6. Pine 24 S. 82 E. 36

From S. E. (4) 16.25 Var. S. 13 (v. 4-10)

N. N. 15 E. (4 1/2) 38.79 Var. N. 1, 13

New, B. T. Hemlock. - S. 71 E. 56 -

Sec. 31. 31-11. June 11/88.

E. 1/4 P. S. (5 1/2) 40.19 Var. E. 40

S. 1/8 on E. line Aug. 16 S. 66 1/2 E. 11.

To Do. W. (4 1/2) 40.15 Var. N. 50

ben. Sec. S. 39.74 meas. on old line.

" S. E. 1/4. Hemlock, etc 14 S. 64 W. 27.

Mid of S. end of fraction 2.30

R.R. N. " " 3.84

Sec. 14. 31-11

S. 1/4 P. Elm 12 S. 26 W. 40

v. 5 To 10 N. 14 E. 29

Sec. 28. 31-11. July 24/88

N. 1/4 P. E. (5 3/4) 40.40

N. 1/8 on W. line. E. (5) 40.36 Var. S. 5-12

N. E. cor. W. 10 acres. S. (2 1/4)

" " " 2<sup>nd</sup> " " S. (2) Var. W. 5 1/2

" " " 3<sup>rd</sup> " " S. (1 3/4) " 7 1/2

stem cut

Sec. 21. 40-10 Aug 1<sup>st</sup> / 88  
N.W. cor. Lamb, lying down  
Pine cone.

Found stake hole + point of  
stake, agreeing with Lamb,  
with 5<sup>o</sup> var. of needle.

Thence E. <sup>-23'</sup> (1) 33.32 Var. N, 22

To Lloyd's  $\frac{1}{4}$  Post.

Lloyd's  $\frac{1}{4}$  P. S, 73 E. 4.35 v. 0<sup>o</sup>

Would be 38 lbs. farther South  
with 5<sup>o</sup> variation

Thence E. (37) 42.50 to a  
stake on bank of lake.

Aspen 6 S, 65 W. 37. v. 10'

S, 85 W. (v. 6) 101 lbs. from Spruce

Spruce is B. L. bed, 15. + 16.

Thence S, 10  $\frac{1}{2}$  W. (v. 6) 4.56 to stake

is about 160 lbs N. of my Sec. line  
See Diary 1888 Bills Payable.

Meander of left bank of  
Spring Brook; from N. line of  
S, N, N. E. Sec. 31, 31-11. to N.  
line of highway - <sup>3/4</sup> <sub>6000</sub> 4,05  
West of N. E. corner.

Var. 5<sup>o</sup> S, 46 W. 40

S, 27 W. 4, 20

S, 13 E. 3, 75 <sup>3, 25 to</sup> branch

S, 29 W. 2, 50

S, 46  $\frac{1}{2}$  W. 2, 30

S, 8  $\frac{1}{2}$  W. 1, 80

S, 5 E. 1, 60

S, 16 W. 1, 50

S, 23 E. 2, 65

S, 10 W. 1, 54  $\frac{1}{2}$

to <sup>N.</sup> line of street - near  
Gowan's bridge.

Sec. 4, 30-11, Aug. 17/88.  
 E. 1/4 P. W. (5 1/4) 38, 81 (5 40) (6 3/4)  
 + (1 25) 40, 13 (4 9) (4-40)  
 S. 1/4 P. N. (4 1/4) 71, 98 Var. E. 2, 27  
 N. E. cor. W. (4 1/2) 78, 55 Var. S. 1, 14

Sec. Dec. Aug. 12 N. 3 W. 32

5<sup>o</sup> Pine stp. 24 N. 55 1/4 E. 51

1/8 bel. N. 1/4 W. Oak. 10 N. 16 1/2 E. 78 1/2

5<sup>o</sup> Pine stp. 30 S. 50 1/2 W. 82

Thence N. (6 1/4) 51, 89 Var. W. 20 (6 3/4)

1/8 bel. E. 1/4 W. 24 S. 15 1/2 E. 70

Thence N. (4-55) 51, 89 Var. E. 52 (4)

N. E. cor. S. (4) 32, 07 Var. W. 1 1/2

N. E. cor. L. 6. W. (4) 39, 15 Var. S. 4. (4-40)

" " " " Pine stp. 30 N. 37 1/2 E. 36

N. W. cor. L. 5. Lind 12 N. 49 1/4 W. 60 1/4

" " " " W. (4-40) to marsh.

1/8 bel. N. 1/4 Sing. 16 N. 27 1/4 E. 25

" " " " is N. W. cor. L. 8. No. 2.

1/8 N. of E. 1/4 P. W. (3 1/2) 39, 00 Var. N. 37 (3 3/4)

" " " " " is

Sec. 4, continued.

N. E. cor. L. 8. W. 7. S. 86 W. 19 1/2

N. W. cor. L. 6. Sing. 12 N. 46 W. 40

Think No. 1 + 2 are a little too far north, blanning not properly done.

Sec. 18, 34-11, Aug. 23/88.

N. 1/8 on N. line. E. (6) 38, 02 Var. N. 9. (5-40)

Sec. Dec. N. (7 1/2) 41, 70 Var. E. 5. (7 1/2)

1/8 bel. N. 1/4 W. 7 S. 9 E. 45 3/4 (6-10)

" " " " E. (6 1/2) 46, 28 Var. S. 95

Possibly the Var. was set at 5<sup>o</sup> on last corner.

E. 1/4 P. N. (5 1/2) 42, 10 Var. W. 98 (5 1/2)

N. 1/8 on E. line. Birch 12 N. 18 1/2 E. 33.

Sec. 27, 31-11, Aug. 29/88.

W. 1/4 P. E. (5 1/2) 80, 50 Var. S. 106 1/2 (3 3/4)

Sec. 20, 31-11, Sept. 3/88.

S. W. cor. E. (L. 1) 41, 68 Var. S. 26.

Sec. 26, 38-11. Sept. 11"/88

N. E. cor. W. (3/4) 81.80 Var. S. 3.05  
N. 1/4 P. Pine 14 N. pl E. 25 N. 5  
E. 1/8 on N. line. Wemb. 11 S. 30 N. 29.

Sec. 23, 38-11. Sept. 12"/88

E. 1/4 P. W. (1/2) 81.78 Var. S. 86.  
N. 1/8 on N. line (1/2) paced 80 rods.

Sec. 30, 37-11. Oct. 2"/88

E. 1/4 P. W. (0) 96.70 Var. S. 2.48  
Do N. (4) 41.18 " W. 44

N. E. cor. W. (0) 41.75 Var. N. 2.93

N. 1/4 P. S. (3) 37.42. Struck E. +  
W. 1/4 line 42.12 N. of E. 1/4 P.

1/8 hd. N. 1/4 E. (3/4) 42.08 Var. N. 10

N. 1/8 on E. line. Pine stp 30 S. 5 N. 9

Sec. 31, 37-11. Oct. 4"/88

S. 1/4 P. E. (5) 41.85 Var. N. 1.31 1/2  
E. 1/8 on S. line. Birch 16 S. 1 1/2 W. 24 V. 3

" " " N. 10 E. 0 15.46 to sd line.

Sec. 6. 36-11. Oct. 4"/88.

N. 1/4 P. S. (4 1/2) 75.00 Found nothing  
+ (1-31) 16.52 1/2 + 18.77 1/2  
N. E. cor. S. (3) 35.31 Var. N. 78

E. 1/8 on N. line, S (2 1/2) 20.00 + left it.

70 rods S. of N. 1/4 P. needle var  
ied 4 1/2 in going 6 rods.

Sec. 29, 37-11. Oct. 6"/88.

S. N. cor. E. (4) 78.00 Var. S. 1.74

Sec. 25, 31-10. Oct. 12"/88.

N. 1/4 P. E. (6 1/2) 39.00 Var. S. 16 1/2

Do Do S. (5) 76.38 Var. E. 7 2 1/2

N. 1/4 P. E. (4 1/2) 81.18 Var. N. 46 1/2

hem Sec. Aug. 8 N. 30 1/4 N. 66

Do 12 N. 32 1/2 N. 58 1/2

1/8 hd. N. 1/4 E. Elm 6 S. 58 1/2 N. 12

Do. Do. E. (5 1/4) 39.11 Var. S. 24

39 rods E. of N. 1/4 P.

Elm. 18 S. 38 1/2 N. 27  
E. 1/8 on N. line. Pine stp. 20 S. 4 1/2 E. 32 1/2

Sec. 6, 36-11. Nov. 8<sup>th</sup>/88.  
 (4-28) 51.41  
 N. 1/4 P. E. (4) 93.50 Vari. N. 7.24 <sup>4-20</sup>  
 S. N. cor. E. (1 1/2) <sup>54.00 (4-20)</sup> 97.70 Vari. N. 19 N. (1/4)  
 S. 1/4 P. { Aspen 8 N. 13 E. 24  
 4<sup>th</sup> Balsam 8 S. 36 1/2 E. 13  
 + (1-10) 33.68 (3)  
 N. 1/4 P. S. (4 1/2) 73.00 Vari. N. 15.00 (4)

Sec. 6 km. { Lank. 10 S. 22 N. 20 1/2  
 4<sup>th</sup> Pine 7 S. 40 1/2 E. 8  
 1/8 hd. N. 1/4<sup>e</sup> Pine 24 N. 41 N. 28 1/2  
 Do. Do N. (4) to swamp  
 Do. Do S. (4) 20.00

Found no South 1/4 P. Think  
 S. line was never run.

Sec. 13, 32-11. Oct. 17/88.  
 (4-35)  
 N. N. cor. S. (5) 40.40 Vari. N. 30.  
 N. 1/4 P. New. Aug. 10 N. 84 N. 38 N. 5<sup>th</sup>  
 (-55) 041.20 (V. 1)  
 Do. E. (1<sup>st</sup>) 81.80 Vari. N. 13<sup>th</sup>  
 N. 1/4 P. S. (5 1/2) <sup>40.00 (5-25)</sup> 78.00 Vari. E. 15<sup>th</sup> (5 1/4)  
 (V. 5)  
 N. 1/8 on N. line. Hemk. 10 N. 88 E. 23 3/4

Sec. 13, continued  
 hem. Sec. Birch 18 N. 10 1/2 N. 27  
 5<sup>th</sup> Aug. 7 S. 59 N. 29 1/2  
 1/8 hd. N. 1/4<sup>e</sup> Hemk. 12 N. 11 1/2 N. 28 3/4  
 Do. Do. N. (V) 40.88 Vari. N. 54.  
 1/8 hd. N. 1/4<sup>e</sup> Hemk. 12 S. 35 N. 51

Sec. 21, 32-11. Oct. 24<sup>th</sup>/88  
 N. E. cor. New Bearings  
 V. 5 { Birch 24 S. 17 E. 57  
 Sugar 20 S. 28 N. 52  
 Do S (6-55) 31.00 to stake in road.

Sec. 16, 32-11.  
 N. N. cor. S. 81 E. V. 5<sup>th</sup> 9.00  
 Alter - S. 62 E. " 4.50  
 ation S. 27 E. " 3.50  
 S. 10 N. " 6.75  
 road. to stake in road.



69. | Sec. 36, 32-12, Oct. 30/88.  
 S. 1/4 P. N. <sup>(4 1/2)</sup> <sup>(4 1/2)</sup> 78.62 Var. N. 1.62  
 N. 1/4 P. E. <sup>(2-5)</sup> <sup>(4 1/2)</sup> 39.40 " S. 14 3 1/2

~ Sec. 3, 31-12, Nov. 1/88  
 N. 1/4 P. S. (3) 75.64 Var. E. 2.53 <sup>(3 1/4)</sup>  
 N. 1/4 P. E. (4 1/2) 39.88 to 1/4 line.  
 Al-19.94 N. (1 1/2) 20.00 + left ib.

~ Sec. 15, 32-9, Nov. 14/88.  
 N. 1/4 P. New. Birch 18 N. 17 N. 23 1/2  
 Do S. <sup>+ 2 1/4</sup> (5) 82.10 Var. N. 3.18 <sup>(6)</sup>  
 S. N. cor. E. <sup>+ (1-35)</sup> (5) 119.38 Var. S. 3.23 <sup>(4-20)</sup>

Did not find S. 1/4 P. or S. E. cor.  
 ~ Sec. 3, 30-11, Nov. 21/88  
 Comm. 7.50 N. of 1/4 N. of center.  
 Thence N. (3-50) 27.50 to R.R. fence  
 " S. 7.50 + N. 80 " " " "

~ Sec. 25, 31-11, Nov. 26/88  
 N. 1/4 P. E. (4) 75.00 Var. N. 21. <sup>(4)</sup>  
 N. 1/4 P. S. (-30) 80.50 Var. N. 47. <sup>(-45)</sup>

188 | 70.  
 ~ Sec. 7, 34-11, Nov. 22/88  
 S. 1/4 P. N. <sup>(1-5)</sup> <sup>(1-50)</sup> 43.21  
 S. 1/4 P. N. (-2) 78.66 Var. N. 1.48 1/2  
 N. E. cor. N. (4) 40.00 to a stake  
 about 5.50 N. + 1.50 N. of N. 1/4 P.  
 per Sec. E. Bank. 10 S. 54 E. 40  
 4° Birch 9 S. 19 N. 47

Sec. 18, 39-9, Nov. 29/88  
 S. E. cor. N. <sup>-19'</sup> <sup>81</sup> <sup>20</sup> (2 1/2) 162.40 Var. N. 90 (2 1/4)  
 5.6.7.8 Norway 5- N. 53 E. 137  
 2 1/4 Do 8 S. 61 N. 26

Do. Original bearings from  
 stumps agreeing with Oct  
 S. E. cor. N. <sup>76.60</sup> <sup>10</sup> (-1° 5') 153.64 Var. N. 134  
 7.8.17.18 Maple 6 S. 85 3/4 E. 26  
 0° Do 7 N. 67 3/4 W. 29 1/2  
 N. 1/4 on E. line 18. <sup>-27'</sup> N. (-1°) 76.50 Var. S. 60 1/2  
 N. 1/4 P. 8 Pine 10 N. 58 N. 14  
 0° Do 7 S. 71 E. 9 1/4  
 Thence N. (-1/2) 78.20 Var. N. 15 1/2 <sup>(-15)</sup>

71. | 248

Secs. 7, 8, 17, &amp; 18, continued

N. 1/4 P. 8. E. (1/2) 74.41 Var. N. 107 1/2  
-50' 39, 32 E 10'N. 1/4 P. 8. S. (0) 83.52 Var. N. 216  
+1 1/2 43, 46 (-2')

S. 1/4 P. 8 of Birch 14 S, 86 1/2 N, 11 1/2

0<sup>+</sup> Do 6 S, 63 E, 17 1/2

ben. 8. Pine 17 S, 83 1/2 N, 94

0<sup>+</sup> Do 12 S, 19 N, 761/8 bel. N. 1/4<sup>2</sup> 8, Aspen 9 S, 75 1/2 N, 27

" " N. (1 1/2) 21.00 to stake

Pine stp. 22 S, 66 1/2 E, 23 1/4

N. N (2 1/4) through Pine.

Scaled up about 300 m

of trespass on these sections

0<sup>00</sup> Sec. 1, 36-10, Dec. 19/88

S. E. cor. N. (4) 80.00 &amp; left it, (3 3/4)

- Sec. 4, 32-11, Jan. 3/89.

N. E. cor. N. (4) 41.36 N, N, 2.96  
+ (4-5) (V. 3-10)

N. 1/4 P. S. (5 1/2) 40.00 &amp; left it (4)

E. 1/8 on N. line, 3 benk. 20 N, 10 N, 9  
(V. 6)

Thence S. (6) 20.00 &amp; l. N. it = N. 3 3/4

86<sup>a</sup> Sec. 23, 36-8, Jan 14/89. | 172.boun. at M. b. on E. side of  
Wisc. river, on N. line of Sec.Thence E. (5) 72.92 Var. S. 3.01 1/2  
(V. 4.)S. 1/4 P. 13. N. (9) 78.42 Var. N. 5.07 1/2  
(3-42) (V. 9-35)N. 1/4 P. 13. W. (6) 37.14 Var. N. 22  
20.03 1/4 (7 1/2)

M. b. about 80 rods S. of N. N.

cor. 13. (7) 21.20 Var. E. 98 1/2  
(-2-40) (V. 7.)N. 1/4 P. 13. S. (5) 40.18 Var. N. 77  
(V. 5.)

S. N. cor. 13. Pine 20 S, 7 1/2 N, 61 1/2

6<sup>+</sup> New Spruce 16 N, 3 E, 65boun. at M. b. on E. side of  
Wisc. river on N. line 23,  
(V. 4 1/2)Thence E. (5) 32.75 Var. S. 41 1/2  
(V. 4.)S. N. cor. E. (4 1/2) 40.17 Var. S. 260  
+ (3-42) (V. 4 3/4)S. 1/4 P. N. (5 1/4) 78.58 Var. E. 21-12  
+ 9, 44, 02Do E. (15) 35.76 Var. S. 2, 74  
+ (4-24) (14 1/2)N. 1/4 P. E. (8 1/4) 40.31 Var. S. 12 1/2  
+10+5 1/2 (7 3/4)S. E. cor. N. (6) 36.62 Var. N. 49 N. 5  
-46' 20, 28

Dec. 13, 36 - 8 continued

M. l. south of Lake Julia

on E. line of 13. v. 6.

New. B. L. Spruce 10 S, 38 E, 26

S. N. cor. 13, S. (6) 80, 00 & then  
off rd - E, 1.40 (4-40)

Thence S, (6-40) 39, 80 Var. N. 82

Orig Pine standing.

At 39, 93 S, & 74 E. of N. E.

cor. 23, N. (5) 40, 00 Var. N. 88

S. 1/4 P. 23, N. (3) 40, 00 Var. E. 116

At 39, 90 S, & 111 E. of N. E. cor.

of 23, N. (6) 39, 82 Var. N. 16

S. 1/4 P. 14, N. (6) 81, 00 Var. N. 242

N. 1/4 P. 14, E. (7) 82, 30 Var. N. 3.70

Sec. 14 Pine 22 N. 88 1/2 W. 25 1/2

6<sup>th</sup> Lank 12 N. 6 E. 31 3/4

N. 1/4 P. 14, S. (5) 43, 47 Var. N. 1.40

S. 1/8 on N. line E. (5 3/4) 40, 26 Var. N. 32

Dec. 14, continued

Sec. S. N. 1/4, N. (6 1/4) <sup>note</sup> Var. N. 42.

N. B. I run from N. 1/4 P. of Sec. 13, E. parallel with the N. 1/2

of S. line; but as that struck S. of Lake Julia, concluded

that I must run parallel with a direct line from

S. N. cor. to S. E. corner.

Sec. Dec. 14, S. 59 1/2 N. 17

13. v. 6 Lank. 24 N. 83 1/2 E. 22 1/2

Thence E. (13 1/2) 28.25 to Lake

M. l. Spruce 7 N. 1 1/2 W. 7

v. 6. Do 6 S. 22 W. 5

S. 1/8 on N. line, E. (11) 40.20 Var. S. 9

1/8 hd. S. 1/4 E. (16 1/2) 35.40 N. S. 10

S. 1/8 on E. line, Pine 12 S. 42 W. 5.

1/8 hd. N. 1/4 N. (6 1/4) 37.14 1/2 Var. N. 32

75

$\oplus$   $\frac{84}{85}$   
 Sec. 7, 36-9. Feb. 11/89

S.  $\frac{1}{4}$  P. N.  $(\frac{27}{3})$  42.75 Var. N.  $(\frac{17}{24})$

E.  $\frac{1}{4}$  P. W.  $(\frac{29}{5})$  41.16 + 19.30 Var. N.  $(\frac{10}{25})$

S. ben. Sec. Cedar 10 S. 69 N. 22

5<sup>o</sup> Birch 10 S. 60 E. 7

$\frac{1}{8}$  bel. N.  $\frac{1}{4}$  Tank 6 S. 45 N. 11k.

Do. Do N.  $(\frac{26}{4})$  19.80 Var. N. 15

N. N. cor. S.  $(\frac{37}{5})$  19.85  $(\frac{5}{2})$   $(\frac{11}{2}$  alk.)  $(\frac{4}{1})$

Do. Do S.  $(\frac{20}{5})$  54.85 " E. 32

N.  $\frac{1}{8}$  on N. line, Pine stp. 24 N. 13 N. 49

$\frac{1}{8}$  bel. N.  $\frac{1}{4}$  Birch 8 N. 71 E. 14  $\frac{1}{2}$

Do. Do. N.  $(\frac{19}{6})$  41.03 Var. N. 11  $(\frac{3}{14})$

At river on N.  $\frac{1}{8}$  line.

N. b. Elm 11 S. 5 N. 22  $\frac{3}{4}$

$\frac{1}{8}$   $\sqrt{85}$  +  $(\frac{10}{5})$  19.90  $\frac{1}{2}$   $(\frac{10}{5})$

N. E. cor. 12. N. (6) 21.08 Var. N. 71

N. b. (New) Elm 14 S. 6  $\frac{1}{2}$  N. 9

E.  $\frac{1}{8}$  on N. line, 12. Norway 18 N. 18 N. 20

Do. Do. S.  $(\frac{4}{4})$  19.86 Var. N.  $(\frac{17}{24})$

N.  $\frac{1}{8}$  on E. line, N.  $(\frac{7}{2})$  19.90 Var. S.  $(\frac{10}{24})$

$\oplus$   $\frac{85}{86}$  also  $\frac{86}{87}$  which is correct

Sec. 12. continued. 76.

ben. N. E.  $\frac{1}{4}$  of Pine 5 N. 81 N. 28  $\frac{1}{2}$

Thence S.  $(\frac{10}{1})$  19.86 to  $\frac{1}{8}$  corner.

" N. (Tr. 19.90 parallel with N. line

Angle at ben. N. E.  $\frac{1}{4}$  - N. + E.

Transit is 88<sup>o</sup> 5'.  $(\frac{1}{12})$

ben. Sec. S. (Tr.) 49.70 Var. N. 8.92

Do. Do. " " 24.85 Thence

E. (Tr.) 23.50 to Lake Julia

N. b. Pine 20 N. 13 E. 10  $\frac{1}{4}$

Sec. 14. 32-11. Mch. 14/89

S.  $\frac{1}{4}$  P. N.  $(\frac{11}{26})$  79.20 Var. N.  $(\frac{5}{14})$

E.  $\frac{1}{4}$  P. W. (5) 5.00 + left it.

Sec. 20. 30-11. Apr. 4/89

S.  $\frac{1}{4}$  P. Found stake hole, Truss gone

(5) New. Elm 12 N.  $(\frac{5}{2})$  E. 51

S.  $\frac{1}{4}$  P. N.  $(\frac{4}{4})$  this to here is E.  $\frac{1}{8}$

on S. line instead of S.  $\frac{1}{4}$  P.

S.  $\frac{1}{4}$  P. O. of stp. stg. bank. 7 N. 33 E. 40

77. Sec. 32, 31-11. Apr. 15/89

(3 1/4)

ben. Sec. S. (2 1/2) 40, 20 1/2 Var. N. 80

1/8 bel. S. 1/4 Lind 20 S. 9 N. 26 V. 5

27.59

Do. Do. N. (5) 40, 36 Var. S. 1.02

(5 1/4)

N. 1/4 P. 3, 30-11.

20, 26 1/8

N. (0°) 40, 43 1/2 Var. E. 7 3/4

~ Sec. 32, 31-11. May 2/89

(2 1/4)

S. N. cor. E. (3 1/2) 40, 30 Var. N. 24

~ Sec. 20, 31-11. May 22/89

comm. at Duchac's 1/8 bel. E. 1/4 2

N. on his L. line 1733 ft. Var. N. 28 1/2

E. 1/4 P. N. Duchac's L. 1356.2 ft.

+ 2716 to stone + 425.9 to ac-

tual 1/4 line, (429.5 to Kern road

N. E. cor. N. on road 14' 33 1/3 ft.

" " " " " " 37' 0 1/2 "

Angle at S. E. cor. 88° 54'

ben. stone in Kern road, N. 1349 ft.

" " " " " " 1681 N. cor.

~ Sec. 20, continued, } 78.

ben. stone in Kern road

N. 25-40 3/4 to N. 1/4 P.

(13 1/2)

" " S. 26 87 1/2 Var. W. 7.2 ft.

E. + N. 1/4 line is 9.2 ft. N.

of stone 429.5 E. of Kern road,

Op. E. 1/8 on E. + N. 1/4 line

-3'

N. (L.) (5-32) 2633 Var. N. 2 1/2 ft.

See plat of this survey in  
my office for more complete  
notes.

~ Sec. 11, 30-11. June 3/89

(4-10)

S. N. cor. E. (3 1/2) 39.62 Var. S. 41.

S. 1/4 P. Elm stg. + O. N.

S. N. cor. + on boulder (large)

N. 5' 3/2 E. 83 lks. V. 5.

~ Sec. 12, 32-11. June 19/89

(4 1/2)

S. N. cor. N. (4 1/2) 40, 58 Var. E. 57

S. 1/8 on N. line. Aug. 1.0 N. 19 1/2 E. 6 1/2

Thence E. (1°) 81.00 Var. N. 1.04

S. E. cor. N. on line 40.00 to 1/4 P.



79. Sec. 20. 31-11. June 27<sup>th</sup>/89

S. E. cor. Bridgman lot.  
No. 1.  
br. board. 7 x 8 x 22 + + on top.  
No. 2.  
S. E. cor. " 2 x 8 x 24 " " " "  
No. 3.  
N. W. " " 1 1/2 x 6 x 30 " " in notch  
No. 4.  
S. W. " " 4 x 6 x 30 " " on top

No. 2. is 396 ft. N. of No. 1.  
" 3 " 2132 1/2 ft. W. of No. 2.  
" 4 " 388 ft. S. of No. 3.

+ 2186 1/2 " W. " " 1.

R. of W. on N. end <sup>curve</sup> 27 + ft. <sup>wide</sup>

" " " S " 22 1/2 " "

Angle at N. 1/4 P. 93 3/4.

<sup>713</sup> Sec. 5. 38-11. July 10<sup>th</sup>/89.  
24.46  
N. 1/4 P. N. (8) 45.38 Var. E. 56. (70)

N. W. cor. E. (5 1/4) 40.22 Var. S. 70 (4-35)

N. 1/4 P. E. (6 1/2) 75.00 + quit on (5-33) (5 1/2)

N. bank of Lake, found no m. b.

N. 1/4 P. E. (at 51.50) offed N. (5 1/2) 2.50

<sup>813</sup> Sec. 5. continued. 80.

Then E. (5 1/4) 3.00 Then N. (5 1/4) 1.50

" " " 2.50 " " " 2.00

" " " 5.00 " " " 1.75

" " " 3.00 + 5.00 + 5.00

Comm. at m. b. on N. side Spirit

Lake. N. (6 1/2) 86.08 Var. N. 1.56 - 29 (6 3/4) (7)

W. 1/8 on N. line. Aug. 8 S. 34 E. 25 V. 6

Do. Do. S. (7) 20.13 Var. N. 4

Ken. Sec. Aug. 8 S. 29 E. 16 NEW HCM. 20 N 55 E 46

6 Do 10 S. 23 W. 19 NEW HERN 10 N 38 W 26

N. 1/8 on N. line. Maple 8 S. 13 W. 20 1/4

Do. Do. E. (7 1/2) 39.66 Var. S. 45 (7 1/2)

E. 1/8 bel. N. 1/4 Norway N. 68 E. 22.

Ken. N. 1/4 Spruce 5 S. 88 1/2 W. 34

<sup>896</sup> Sec. 1. 36-10 Nov. 9<sup>th</sup>/89

Comm. 1/2 mile W. of S. E. cor.

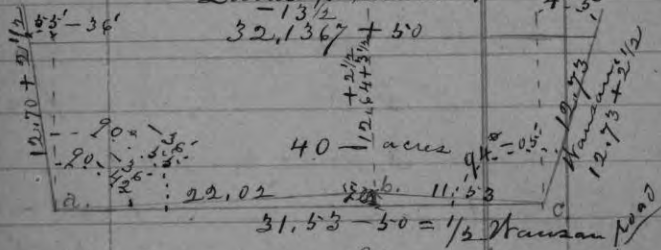
thence N. (4) 71.82 Var. N. 218 (3 1/2)

at 18.00 N. of starting point  
W. (4) 34.50 to swamps & left it.

Secs 31 + 32, 31-11. Aug. 3<sup>rd</sup> / 89

Quinn's land.

$32,1367 + 50$



a. is E.  $\frac{1}{4}$  on S. line of 31.

b. " S. E. cor. 31.

c. " intersection of Town  
line with Kansan road +  
is 11 $\frac{1}{2}$  links N. of N.  $\frac{1}{4}$  P. of 3.  
which was established on  
line between N. E. & N. W. corners  
of Sec. 3. last year.

a. E. 5.97 to ben. of track

Angle made by a. to c.

with R.R. is  $95^{\circ} 35'$

Distance on track 12.76

Bearings taken with Transit  
with no variation.

31 + 32 continued.

N. line of Quinn's + E. side of  
R. of W. Birch 20 S, 60 E, 10

N. line of Quinn's + N. side  
of R. of W. Kernk. 14 N, 83 $\frac{1}{2}$  W, 33

From N. E. cor. S. E. S. E. 31.

West 12.05 to ben. R.R. track  
Thence South on E. rail  $7.37$   
to N. line of Quinn's.

Quinn's N. E. corner.

Sec. 13 S, 87 $\frac{1}{2}$  W, 46.

Found after making calcula-  
tions on opp. page, that  
N. W. cor. was 13 $\frac{1}{2}$  links  
too far West. Hence  
bearings for Quinn's N.  
line on R.R. track 2 $\frac{1}{2}$   
links too far South.

83. Sec. 22, 33-11, Oct. 31<sup>st</sup>/89.

S. N. cor. N. (4<sup>3</sup>/<sub>4</sub>) 41.10 Var. N. 40.

S. 1/8 on N. line, Lind 8, S. 67<sup>1</sup>/<sub>2</sub> N. 38

S. N. cor. S. (4<sup>1</sup>/<sub>2</sub>) 41.50 Var. E. 6, 00.

This line was run hurriedly to get an approximate course.

S. N. cor. E. (2<sup>1</sup>/<sub>2</sub>) 40.57 Var. S. 97

N. 1/8 on S. line, Lind 8 S. 79<sup>1</sup>/<sub>2</sub> N. 30

Thence S. (4) 20.00 to stake.

" E. (4<sup>1</sup>/<sub>2</sub>) 20.00 " "

83/ Sec. 6, 26-9, Oct. 18<sup>th</sup>/89.

S. 1/4 P. Birch stp. 10 S. 21 E. 29

5<sup>th</sup> W. Pine 20 N. 86 N. 128

Do N. (5<sup>1</sup>/<sub>2</sub>) 18.44 to river. Offset

E. 1.00, Angle 14<sup>o</sup> 16', Dist. 3.93<sup>1</sup>/<sub>2</sub>

N. side river N. 33.00 to river <sup>square</sup>

Offset N. 85, Angle 15<sup>o</sup> Dist. 3.17

N. side river, N. 23.17 Var. E. 12

S. E. cor. N. (3<sup>1</sup>/<sub>2</sub>) 41.69 Var. E. 173+50

83/ Sec. 6, continued. 84. (v. 9<sup>o</sup>)

S. 1/4 P. N. (5<sup>1</sup>/<sub>2</sub>) 81.71 Var. E. 12

N. 1/4 P. Pine stp. (Road on S. N. cor.)

5<sup>th</sup> West 223, - Off. N. 80 N. 2, 13

R. Oak N. 87<sup>1</sup>/<sub>2</sub> E. 1.75

S. E. cor. G. Pine 10 S. 88 N. 1.47

5<sup>th</sup> W. Pine 24 N. 74 E. 2.14

E. 1/4 P. G. Pine 10 S. 71 N. 1.68 0. N. 5<sup>th</sup>

5<sup>1</sup>/<sub>2</sub> The other tree gone.

E. 1/4 P. E. (3<sup>1</sup>/<sub>2</sub>) 130 ft. N. (3<sup>1</sup>/<sub>2</sub>) 416 ft.

+ then N. (3<sup>1</sup>/<sub>2</sub>) 130 " then N. (3<sup>1</sup>/<sub>2</sub>)

(Tr. at right angles) 30.24 chains

West-end of bridge.

E. 1/4 P. N. (Tr) 82.00 Var. S. 178 (4<sup>1</sup>/<sub>2</sub>)

Do N. 39.68 + 20.15 + 22.17.

Ren. Sec. Pine stp. 12 S. 52<sup>1</sup>/<sub>2</sub> E. 48<sup>3</sup>/<sub>4</sub>

5 Do Do 20 S. 52<sup>1</sup>/<sub>2</sub> N. 41<sup>3</sup>/<sub>4</sub>

1/8 bel. N. 1/4 Pine stp. 24 S. 72 E. 22<sup>1</sup>/<sub>2</sub>

5 Do Do 16 S. 87 E. 26<sup>3</sup>/<sub>4</sub>

83<sup>1/2</sup> Sec. 6, continued.

20, 38 + 18, 08 (1/2)

N. 1/4 P. S. (5) 38, 46 Var. 2, 34

M. b. Pine 24 N. 6 E. 66 1/4 (V. 40)

" " Had to sd this 5 best so far,

M. b. South Pine 18 N. 28 W. 42 1/2

of bend. Elm 11 S. 79 3/4 W. 50 3/4

bend. S. N. 1/4 Pine 10 N. 19 W. 22 3/4

5<sup>th</sup> bend, 10 N. 4 1/4 E. 21

bend. Sec. Angle (S. E.) 90° 18'

bend. S. N. 1/4 S. 3, 00 to R. of W.

" " " N. 21, 71 to cor. (3 1/2)

" " " E. 15, 69 to R. of W.

M. b. Pine 16 S. 46 1/4 W. 27 1/2

5<sup>th</sup> Pine stp. 16 N. 50 1/2 W. 45

S. 1/8 on N. line Pine stp 22 S. 33 W. 31 1/4

5<sup>th</sup> Pine 12 N. 50 3/4 E. 76 1/2

bend. Sec. East to river 8. 75

M. b. Maple 11 S. 62 3/4 W. 86 1/2

Elm 8 N. 47 W. 81

86<sup>1/2</sup> Sec. 5. 26-9, Nov. 27/89

N. 1/4 P. E. (5) 82, 26 Var. S. 1, 65

E. 1/4 P. S. - with bearing of line to Sec.

3 1/4 Agreed with notes except

that the cedar was S. 7 W. instead of

14 1/2 E. of E. 1/4 P. S. on Engineer's

random (5) 41, 56 Var. N. 1 1/2 (V. 5 1/2)

S. E. cor. W. (4) 42, 52 Var. N. 73

S. 1/4 P. N. (4) 83, 28 Var. N. 1, 9 1/2

bend. Sec. Pine 6 S. 89 E. 14 1/2

5 Do 9 N. 26 1/2 W. 26

S. 1/8 on E. line Pine stp. 16 S. 13 1/2 E. 45

E. 1/8 on S. line Pine 10 N. 6 3/4 W. 13

5 Do 11 N. 87 W. 20 1/4

Thence N. (35) 41, 91 Var. N. 11 1/2

1/8 bend, E. 1/4 Pine 18 N. 63 1/2 E. 45 1/2

S. 1/8 on E. line W. (3) 41, 09 Var. S. 20 1/2

1/8 bend, S. 1/4 Spruce 4 S. 28 1/2 E. 82 1/2

Pine 4 N. 15 W. 88 2/3

87.  $\frac{1}{8}$  Sec. 5, continued.

ben. S.  $\frac{1}{4}$ . Norway 14 N, 84  $\frac{1}{2}$  E, 18  
 5: Do 12 S, 24  $\frac{1}{4}$  N, 32  $\frac{1}{2}$  (5  $\frac{1}{2}$ )  
 S.  $\frac{1}{4}$  P. N. (5)  $\frac{22.71}{23.34}$  Var. S, 43  
 M. b. Elm  $\frac{4}{4}$  N, 54 E, 29  $\frac{1}{2}$  V. 5<sup>+</sup>  
 " " New. Pine 16 N, 65  $\frac{1}{4}$  E, 54  $\frac{3}{4}$

$\frac{1}{8}$  Sec. 4, 36-9, Dec, 2<sup>1</sup>/<sub>189</sub>

$\frac{1}{4}$  P. S. (4) 42, 07 Var. N, 14, 00 (V. E)  
 -47' 40, 34 (2-5) (1  $\frac{1}{2}$ )  
 S.  $\frac{1}{4}$  P. N. (2) 83, 20 Var. N, 114 (V, 2  $\frac{3}{4}$ )  
 $\frac{1}{4}$  P. N. (4)  $\frac{40, 96}{80, 84}$  (17) Var. N, 38, (3<sup>+</sup> 50)  
 - (1<sup>+</sup> 5)  
 S. E. cor. (4  $\frac{1}{2}$ ) N, 19  $\frac{1}{2}$  N, 44, 38  $\frac{1}{2}$  N, 83.  
 N.  $\frac{1}{4}$  P. New. Pine 8 N,  $\frac{1}{4}$  N, 41 N. 5<sup>+</sup>

ben. Dec. Pine 11 S, 41 E, 29  
 5- Do 10 N, 52 E, 32  $\frac{3}{4}$

$\frac{1}{8}$  bel. S.  $\frac{1}{4}$  Pine 10 N, 67  $\frac{1}{4}$  N, 32  
 5- Lank 12 S, 37  $\frac{1}{4}$  N, 16 (3)

Thence E, (3) 48, 80 Var. N, 27  
 N.  $\frac{1}{4}$  P. N. (-1<sup>+</sup>) 42, 02 Var. E, 79.  
 N.  $\frac{1}{8}$  on N. line Pine 12 S, 37  $\frac{1}{2}$  N, 14  $\frac{1}{2}$   
 5- Do 13 N, 72 E, 8

$\frac{1}{8}$  Sec. 4, continued. (88, 5  $\frac{1}{2}$ )

N.  $\frac{1}{8}$  on N. line, E. (4  $\frac{1}{4}$ ) 40, 19 Var. N, 18  $\frac{1}{2}$   
 $\frac{1}{8}$  bel. N.  $\frac{1}{4}$  Pine 6 S, 67  $\frac{1}{2}$  N, 15  $\frac{3}{4}$   
 $\frac{1}{8}$  " N.  $\frac{1}{4}$  Norway 12 N, 86 N, 10  $\frac{1}{2}$   
 Do. Do. N. (- $\frac{1}{4}$ ) 20, 55 Var. E, 11  
 ben. N. N.  $\frac{1}{4}$ . Pine 16 S, 45 N, 17  $\frac{1}{4}$

N.  $\frac{1}{4}$  P. New. Lank, 6 S, 89 N, 12  $\frac{3}{4}$   
 4. V. S. Spence 7 S, 41 N, 16  
 S.  $\frac{1}{8}$  on E. line, Norway 6 N, 76 E, 44  
 5- Do, Ste. 10 N. 50

ben. S. E.  $\frac{1}{4}$ . Bank, 8 S, 74  $\frac{3}{4}$  N, 21  $\frac{1}{2}$

$\frac{1}{8}$  Sec. 8, 36-9, Dec, 11<sup>1</sup>/<sub>189</sub>

N.  $\frac{1}{4}$  P. S. (4)  $\frac{78, 38}{78, 38}$  Var. N, 3, 36 (4  $\frac{3}{4}$ )  
 + (2-28)  
 $\frac{1}{4}$  P. N. (5) 44, 50 to N. + S.  $\frac{1}{4}$  line, (3  $\frac{1}{2}$ )

S. N. cor. E. (Old Ch. 172) 88, 00 Var. S, 2, 58 (3<sup>+</sup>)  
 " " " " " " 46, 18 " " 2, 84 (3<sup>+</sup>)  
 (7<sup>+</sup> 50)

E.  $\frac{1}{8}$  on N. line, S. (3-40) 39, 93 Var. E, 40  
 N.  $\frac{1}{4}$  P. S. (6  $\frac{1}{2}$ ) 17, 80 to river  
 M. b. Aspen 11 S, 64 N, 9  $\frac{3}{4}$   
 5- Do 18 S, 34  $\frac{1}{2}$  E, 7  $\frac{1}{2}$



89. <sup>84</sup> Sec. 8, continued.

E. 1/8 on N. line S. (3° 3') 27.00 to river  
 M. L. Ash 9 N. 7 1/2 E. 33  
 S. Maple 14 S. 48 1/2 E. 38

The Field notes used in surveying  
 4, 5, 6, 7, 8, 36-9, and 67-20 36-8  
 are in possession of J. L. Courran

89. <sup>59</sup> Sec. 6, 36-8, Jan. 2<sup>nd</sup> 1890.

S. E. cor. N. (6) 40.00 + fall in,  
 - (1° 51') 41.35 + 20.07 + (15 1/2)  
 Do Do, N. (16) 93.17 Var. N. 3.03 (3° 25')  
 + (11° 31') 59.73 cont  
 Do, Do, N. (4) 73.58, Var. N. 1.96  
 " " N. (5 1/2) 49.27 + 24.31

S. 1/4 P. N. Pine 26 N. 54 1/2 E. 20  
 S. Norway 26 N. 87 E. 10 1/4  
 - (1° 21') 40.32 (8 3/4)  
 Do, Do, N. (9 1/4) 91.92 Var. N. 2.19

E. 1/8 on S. line Maple 8 S. 9 E. 15  
 S. Sugar 9 S. 84 E. 25 1/2  
 Gen. Sec Aspen 12 N. 70 1/2 E. 36  
 S. Norway 12 N. 53 1/2 E. 38 3/4

89. <sup>59</sup> Sec. 6, continued, 190

E. 1/4 P. N. (5 1/2) 67.25 Var. N. 58,  
 + 1/2 45.12 (5°)  
 N. 1/8 on E. line Norway 22 S. 70 E. 35  
 S. Do 20 S. 15 E. 16 1/4 (3° 15')

Do, Do, N. (6) 43.10 Var. N. 68  
 1/8 bel. N. 1/4 Norway 24 N. 16 3/4 E. 25  
 S. Birch 8 S. 78 1/2 E. 25 1/2

E. 1/4 P. R. Oak. 6 N. 27 1/4 E. 26 1/2  
 S. Maple 7 S. 2 1/2 E. 20 1/2

89. <sup>65</sup> Sec. 20, 36-8, Jan. 8<sup>th</sup> 1890.

S. N. cor. N. (5) 39.51 Var. E. 13 5/12 (2.5)  
 + (1° 55')  
 " " N. (5) 77.30 " N. 4.67 (5°)  
 - (3 1/2)  
 " " E. (3°-8') 78.86 Var. N. 20 1/2

S. E. cor. New Pine sp. 7 N. 2 E. 25  
 S. Do Do 10 S. 16 E. 25 3/4

S. E. cor. N. (16 1/2) 36.50 Var. E. 3.27  
 - 2' 27.32 + 9.30 (23 1/2)  
 Do, Do, N. (21-40) 36.62 Var. N. 3.

E. 1/4 P. Hemk. 9 S. 42 E. 22  
 S. Do 6 N. 26 E. 5 1/2

91. <sup>64</sup> Dec. 20. continued.  
 E. 1/4 P. N. <sup>+47'</sup> (-5) 73.90 Var. N. 1.00 <sup>-(6-35)</sup>  
 S. 1/4 P. Pine 12 N. 53 N. 20 1/2  
 5 Do 20 S. 18 N. 33 3/4  
 Do. Do. N. (11 3/4) <sup>(-4°-40)</sup>  
 N. N. cor. E. (-5) 57.75 Var. N. 4.30  
 S. 1/8 on N. line <sup>8</sup> Sump N. 88 1/2 E. 15 1/2  
 5<sup>o</sup> Pine 14 S. 13 1/2 E. 33  
 Do. Do. E. <sup>-22'</sup> (74) 76.09 Var. N. 49 <sup>(1/2)</sup>  
 S. 1/8 on E. line. <sup>8</sup> Sump, 10 N. 7 E. 16  
 5<sup>o</sup> Norway 12 S. 42 1/2 N. 24.  
 N. cor. E. 16.00 to Lake.  
 N. Pine 20 N. 19 N. 17 <sup>1/2</sup>  
 Birch 10 S. 12 N. 29  
 Dec. 7. 36-8. Jan. 15<sup>o</sup> /90 <sup>(9/11)</sup>  
 S. 1/4 P. N. <sup>+43'</sup> (10) 83.02 Var. E. 102

Sec. 9, 42-9. Inchs. 11<sup>o</sup> /90. 192.  
 N. 1/4 P. S. (5) 79.68 Var. N. 138 V. 5<sup>o</sup>  
 Do E. <sup>(7-10)</sup> 2006 <sup>8.32</sup> (5) 25.36 Var. N. 52 1/2  
 Gen. Sec. E. (4) 39.44 Var. S. 25 N. <sup>(37-50)</sup>  
 1/8 bel. N. 1/4 E. (4) 39.78 <sup>+42 1/2</sup> too far E. at first  
 E. 1/4 P. N. (5 1/2) 36.33 Var. N. 30  
 1/8 bel. E. 1/4 N. (5 1/2) 39.94 Var. N. 8.  
 Sec. 2, 40-9. Apr. 16<sup>o</sup> /90  
 S. N. cor. Pine 30 S. 76 E. 52 1/2 Allen  
 V. 5<sup>o</sup> Do 30 S. 49 N. 48 Lloyd  
 Do N. (5 3/4) on Lloyd's random  
 37.58 to Lloyd's 1/4 Post.  
 38.00 " creek.  
 58.44 to Lloyd's N. 1/8.  
 57.14 " Graham's N. 1/8.  
 S. N. cor. N. on Lloyd's random 71.92  
 E. 1/4 P. (Billy Allen's)  
 Aspen 7 N. 37 N. 23  
 Birch 5 S. 7 1/4 N. 9 } N. 5 3/4

93.

Sec. 2, 409 contd.  
Lloyd's  $\frac{1}{4}$ P. 11 N, + 23 S.  
Offset E. ( $5\frac{3}{4}$ ) 104 to Lloyd's  
random; then

N. on Random 34.40 Var. E. 224  
N. E. cor. N. (5) 33.24 Var. N. 13  
15.00 cha. N. of N. E. cor.  
S. ( $7\frac{1}{2}$ ) 15.73

N.  $\frac{1}{8}$  on E. line N. (5) 15.00 V. S. 12  
E.  $\frac{1}{4}$ P. S. on random 37.00 to cor

— Sec. 19, 32-12, Apr. 22/90  
E.  $\frac{1}{4}$ P. chained west on road 42.00

N.  $\frac{1}{4}$ P. S. (7) 79.25 Var. N. 13. V.  $6^{\circ}$ -25'  
S  $\frac{1}{4}$ P. E. on random 39.45

E.  $\frac{1}{8}$  on S. line N. (5) 39.25 Var. E. 22  
N.  $\frac{1}{4}$ P. E. ( $3\frac{1}{2}$ ) 84.81 Var. S. 46.

— Sec. 15, 31-11. Apr. 25/90

S. N. cor. N. 50 E. ( $6\frac{1}{4}$ ) 58.50 Var. N. 10

Do. S. 45 N. ( $6\frac{1}{2}$ ) 56.25 Var. N. 6 V.  $6^{\circ}$ <sup>+</sup>  
Pine stp. 36 N. 39 N. ( $5^{\circ}$ ) 30. (In chair slabs.)

94.

✓  
② 220  
Sec. 8, 39-5. Apr. 30/90  
N.  $\frac{1}{4}$ P. N. (9) 39.88 Var. —  $10\frac{1}{2}$  V.  $4^{\circ}$  50'  
S. N. cor. E. (2) 36.81 Var. N.  $5^{\circ}$  20  
N.  $\frac{1}{8}$  on S. line Spruce 3 S. 19 E. 8.  
V.  $5^{\circ}$  Do  $2\frac{1}{2}$  S.  $34\frac{1}{2}$  N.  $12\frac{1}{2}$   
— ( $1^{\circ}$ -20)  
Thence N. (5) 20.19 Var. N.  $47\frac{1}{2}$   
S. N. cor. N. ( $4\frac{1}{2}$ ) 40.17 Var. — 36 V.  $9\frac{1}{2}$   
S.  $\frac{1}{8}$  on N. line (bank) 10 N.  $40\frac{1}{2}$  E.  $28\frac{1}{2}$   
V.  $5\frac{1}{2}$  Do 5 S.  $34\frac{1}{2}$  E. 28  
Thence E. ( $5\frac{1}{2}$ ) S.  $79\frac{1}{2}$  E. 23.46 (S.  $78\frac{1}{2}$  E.)

② 220  
—  
But. 19730 39-5 May 7" 1890.  
From Lake E. on Transit line  
58.95 to  $\frac{1}{4}$ P. / at 19.12 (+ 44' run  
+ 44'  
S. ( $3\frac{1}{2}$ ) 39.60 Var. N. 57 V.  $2^{\circ}$  50'  
New  $\frac{1}{4}$ P. Maple 8 S.  $56\frac{3}{4}$  N. 38

$3^{\circ}$  55' Cy. Pine stp. 28 N. 29 N. 2  
+  $2^{\circ}$  40' 41.98 61.56  
E.  $\frac{1}{4}$ P. N. (4) 83.15 Var. N. 3.86 V.  $3^{\circ}$  35'  
+  $6^{\circ}$  20' 32.32  $\frac{1}{2}$   
N. N. cor. E. (5) 34.12 Var. S.  $3.77$  (5)

96.

<sup>223</sup>  
 19430 cont.

S,  $\frac{1}{4}$  P. W. (5) 40.42 Var. S, 56

W.  $\frac{1}{8}$  on S. line Pine 12 N. 29  $\frac{1}{2}$  E.  $3\frac{3}{4}$

5<sup>o</sup> Do 11 S. 6 W.  $13\frac{3}{4}$

Thence N. ( $3\frac{3}{4}$ ) <sup>40.42</sup> 82.21 Var. W. <sup>(3<sup>o</sup> 25')</sup> 54

W.  $\frac{1}{8}$  on N. line Bank. 10 S. 23  $\frac{1}{2}$  W. 20

5<sup>o</sup> Do 8 N. 21 W. 12

<sup>223</sup>  
 Sec. 30, 39-5, May 10<sup>o</sup>/90

$\frac{1}{8}$  bed. W.  $\frac{1}{4}$  Bank, 6 N. 30  $\frac{1}{2}$  E. 18

5<sup>o</sup> Maple 7 N. 60  $\frac{1}{2}$  W. 13  $\frac{1}{2}$

ben. S, W.  $\frac{1}{4}$  Norway 18 S. 89  $\frac{1}{2}$  W. 15

Thence E. ( $6\frac{1}{2}$ ) 20.02 Var. N. 28  $\frac{1}{2}$

ben. Sec. Bank 7 N. 84 W. 29

5<sup>o</sup> Do 15 S. 10 W. 25  $\frac{1}{2}$

Thence S. ( $3\frac{1}{2}$ ) 41.21 Var. E. 8, <sup>3<sup>o</sup> 10'</sup>

$\frac{1}{8}$  bed. S.  $\frac{1}{4}$  W. Pine stp. S. 23  $\frac{1}{2}$  E. 24  $\frac{1}{2}$

$\frac{1}{8}$  " E.  $\frac{1}{4}$  Pine 18 N. 60 E. 21

5<sup>o</sup> Do 18 S. 34  $\frac{1}{2}$  W. 17  $\frac{1}{2}$

96.

<sup>221</sup>  
 Sec. 17, 39-5, May 12<sup>o</sup>/90

S.  $\frac{1}{8}$  on E. line W. (5) 20.06 Var. S, 13.

ben. S. E.  $\frac{1}{4}$ , S. 19.71 Var. E. 26 V. 6<sup>o</sup>

Do. Do. Bank, 10 N. 74  $\frac{1}{2}$  W. 14  $\frac{1}{2}$

E.  $\frac{1}{8}$  on S. line Bank 18 S. 59 E. 13  $\frac{1}{4}$

5<sup>o</sup> Do 8 N. 14  $\frac{1}{2}$  E. 13

<sup>220</sup>  
 Sec. 8, 39-5,

E.  $\frac{1}{8}$  on N. line, S. (4<sup>o</sup> 35') 39-60 Var. W. 50

32 lbs. N. of P. Co. on E.

line. West (5<sup>o</sup>) 19.85. Then S.

at right-angles 4.00 to  $\frac{1}{8}$  bed.

E.  $\frac{1}{4}$  S. Aug. stb. 12 N. 36 W. 49  $\frac{1}{2}$

Thence W. 90<sup>o</sup> - (45')

<sup>220</sup>  
 Sec. 20, 39-5, May 13<sup>o</sup>/90

E.  $\frac{1}{8}$  on N. line. Offed. W. 6 lbs and

S. on Tr. Random (4<sup>o</sup> - 40') 38.12 V. E. 81  $\frac{1}{2}$

N. E. cor. S. (P.) <sup>39.25 (5<sup>o</sup>)</sup> 78.50 Var. E. 1.78

E.  $\frac{1}{4}$  P. gone. (New) Tank. 3 N. 19 W. 38.

Do. W. (5) <sup>4<sup>o</sup> 35'</sup> 79.16 Var. S. 4.58 <sup>4<sup>o</sup> 40'</sup>

Dec. 20, cont'd

Gen. Sec. Pine 30 N. 66 W. 32 N. 5

1/8 bet. E. 1/4 Cedar 10 N. 86 1/4 E. 32

Gen. N. E. 1/4. Lamb 18 S. 62 1/2 W. 20 3/4

Thence N. (3) 19.90 to stake.

" S. (3 1/2) 18.48 Var. N. 14

1/8 bet. N. 1/4 Aspen 7 S. 63 1/2 W. 25 1/2

5 Birch 6 S. 87 1/2 E. 9.

— Sec. 16. 34-9. June 4<sup>th</sup> 1890

N. W. cor. E. (5) 39.68 Var. S. 2.56

N. 1/4 P. Found Ogd. B. Luce chops

ped out - 6.40 ch. S. of Lake 1/4 P.

W. 1/4 P. E. (7) 77.91 Var. S. 1.23

N. 1/4 P. E. (12 1/4) 39.59 Var. S. 3.75

E. 1/8 on N. line Fir 6 N. 82 E. 7

5 Do 4 N. 17 1/2 W. 12 1/2

N. 1/4 P. N. (5) 42.20 Var. E. 108

N. 1/8 on N. line. Hemk 12 N. 87 1/2 W. 35 3/4

Do Do E (4) 39.24 Var. N. 47

Sec. 16. cont'd

N. 1/4 P. S. (6) 36.68<sup>-3</sup> + 42.28 Var. N. 2.05 1/2

10.00 to Lake. Offed N. 1.60 angle S. 19-55 1/2

Dist. 4.14 + 11.00 to River, across

River & Offed N. 90. angle N. 17-5 E.

Dist. 292 to E. & N. line. Then

S. 8.62 to E. & N. 1/4 line

Gen. Sec. Hemk. 20 N. 50 E. 8 1/2

5 Do 11 S. 33 1/2 E. 29 1/2

1/8 bet. N. 1/4 Hemk 15 N. 87 1/2 W. 30

— Sec. 18. 33-11. June 18/1890

S. 1/4 P. E. (4) 40.92 Var. N. 11 N. 3 1/4

E. 1/8 on S. line Elm 18 N. 79 E. 41 1/2

Do Do N. (4) 39.94 Var. E. 96

1/8 bet. E. 1/4 N. (4 1/4) 38.01 + left - il.

— Sec. 10. 32-12 June 24/190

S. W. cor. E. (5) 10.00 to Lake &

set flag in line on E. shore

S. W. cor. E. (5) 2.75. Then N. (5 1/4) 5:50



## Sec. 10 cont'd

Then E. (5 1/4) To Lally 5.

Then S. (5<sup>10</sup> = 10) 5; 45 to line.

Then E. on line.

Whole Dist. 39.58 Var. N. 94 } <sup>5 1/2</sup>S. 1/4 P. N. (4 1/2) <sup>39.78</sup> 79.72 Var. N. 71 } <sup>4 3/4</sup>S. W. cor. N. (4 1/2) 39.90 " " 60 } <sup>4 5/5</sup>

S. 1/8 on S. line Birch 16 S. 88 N. 25

Do Do E. (4) 39.57 Var. S. 9. <sup>3 1/4</sup>N. 1/4 P. (4) 78.90 Var. N. 4 lbs. V. 4<sup>0</sup>

N. E. cor. N. (4) 60.90 to Lake.

Offset N. 1.28 Angle 82° 25.

Dist. across Lake 9.61. Whole

Dist. from Lake to cor. 8.65

N. E. cor. N. (4) 79.16 Var. N. <sup>3 1/2</sup> 36 <sup>40</sup>

N. 1/4 P. Sugar 11 S. 67 1/4 N. 9

4<sup>0</sup> Do 16 N. 50 1/4 E. 33 1/2

ben. Sec. (b) bank 14 S. 34 N. 25 1/2

4<sup>0</sup> Sugar 14 N. 51 1/2 E. 21

## Sec. 10 cont'd

1/8 bet. E. 1/4<sup>e</sup> Sugar 12 N. 49 N. 9 1/2

ben. S. W. 1/4. Birch 20 S. 65 N. 24

Do Do S. (3 1/4) To Lake.

1/8<sup>0</sup> Sec. 20. 36-8. Sep. 2/901/8 bet. E. 1/4<sup>e</sup> Pine 10 S. 70 1/2 E. 10 1/45<sup>0</sup> Do 14 S. 83 N. 15 1/2Thence N. 10 1/2 N. 27. 50 to Lake N. 10<sup>0</sup>

m. b. Norway 20 N. 71 1/2 N. 13 1/4

5<sup>0</sup> N. Pine 14 N. 75 E. 54 3/41/8 bet. E. 1/4<sup>e</sup> S. 10 1/2 E. (V. 5<sup>0</sup>) 29. 86

Var. E. 15 lbs. S. 10 1/2 E. V. 5 1/4

E. 1/8 on S. line Norway 11 N. 22 1/4 E. 9 3/4

ben. Sec. Pine 18 S. 77 N. 13

V. 5<sup>0</sup> Do 18 N. 49 1/2 E. 20 1/21/8 bet. S. 1/4<sup>e</sup> Pine 18 N. 84 N. 201/8 bet. W. 1/4<sup>e</sup> W. Pine 12 S. 8 1/2 N. 41 1/2

Norway 20 S. 46 1/2 E. 37

ben. S. E. 1/4. Pine 11 N. 11 E. 12 1/2

Sec. 20, cont'd.  $N. 1\frac{1}{2}^{\circ}$

$\frac{1}{8}$  bel.  $N. \frac{1}{4}^{\circ}$   $N. 1\frac{3}{4} E. (V. 5^{\circ}) 35, 25$  to Lake  
Strike about 2 rods West of P.M.B.  
on N. line of section.

N.E. Spruce 8  $N. 83\frac{1}{2} E. 28\frac{1}{2}$   
5<sup>th</sup> Norway 20 S. 66  $N. 31$

Sec. 35, 33-11. Dec. 27<sup>th</sup>

N.E. cor. S.  $(5\frac{1}{2})$  40, 32 Var. E. 18.

Trees Lying Down

Thence  $N. (5\frac{1}{2})$  80, 80 Var. S.  $21\frac{80}{40}$   
N.W. cor. S.  $(5\frac{1}{2})$  79, 62 Var. E.  $11.60$ <sup>3 $\frac{1}{2}$</sup>

Found no West  $\frac{1}{4}$  P.

New B.P. Lank 8  $N. 12 W. 10\frac{1}{2}$

$N. \frac{1}{4}$  P. Do 8  $N. 76\frac{1}{2} W. 12$

E.  $\frac{1}{4}$  P. Bank. 12 S. 39 E.  $22\frac{1}{2}$

Do 6 S. 57  $N. 18$

$N. \frac{1}{4}$  P. E. (4) 41, 18 Var. N. 61

E.  $\frac{1}{8}$  on N. line Sugar 18 S.  $22\frac{1}{2}$  E.  $14\frac{1}{2}$

Sec. 26, 33-11  
40, 24  
S.  $\frac{1}{4}$  P. N.  $(3\frac{1}{2})$  78, 70 Var. E.  $192$ <sup>20</sup>

E.  $\frac{1}{4}$  P. W. (4)  $80, 55$  Var. S.  $23$ <sup>3 $\frac{1}{4}$</sup>

Gen. Sec. Birch 12  $N. 22 E. 28\frac{1}{2}$

5<sup>th</sup> Do. 20 S. 19 E. 18

$\frac{1}{8}$  bel. E.  $\frac{1}{4}^{\circ}$  Pine 24 S.  $56\frac{1}{2}$   $N. 24$   
 $N. \frac{1}{4}$  P. S. (5) 40, 10 Var. E. 58

S.  $\frac{1}{8}$  on W. line. Open swamp.

$\frac{1}{8}$  bel. S.  $\frac{1}{4}^{\circ}$  Birch 18  $N. 78\frac{1}{2} E. 30$   
Thence  $N. (3\frac{1}{4})$  40, 60 Var.  $N. 13\frac{1}{2}$   
 $V. 2\frac{1}{4}$

Open Lind al.  $N. \frac{1}{4}$  P. gone.

Sec. 13, 34-10 Dec. 20<sup>th</sup>/81.

N.E. cor. S.  $(5\frac{1}{4})$  86, 10 Var. E. 80

S. E. Bank. 18 S. 45  $N. 23$

cor. Lank 12  $N. 16\frac{1}{2} W. 25$

Do 12  $N. 5 W. 23\frac{3}{4}$

S.E. cor. W. (5) 38, 62 Var. S. 3, 90

S.  $\frac{1}{4}$  P. N. (5) 81, 55 Var.  $N. 95$   
 $-40, 41, 38$   
 $40$

Sec. 13, contd.

N. 1/4 P. W. (5) 39.95 Var. N. 82 <sup>+1 1/4</sup> <sup>(4 3/4)</sup>

N. W. cor. Aug. 12 N. 11 1/2 E. 35

Do 20 N. 68 W. 11

Thence S. on pld. <sup>line</sup> 37.30 to W. 1/4 Post

N. 1/4 P. E. (2 1/4) <sup>39.31</sup> 78.08 Var. N. 87 <sup>(2-25)</sup>

E. 1/4 P. (Lamb. 8 N. 34 1/2 E. 21 3/4

5<sup>o</sup> Do 8 N. 13 1/2 W. 32

ken. Sec. Aug 12 S. 25 1/2 W. 18

5<sup>o</sup> Birch 18 S. 46 E. 31 <sup>(4-20)</sup>

E. 1/8 on S. line N. (4 1/2) 42.16 Var. W. 8

Do Do S. maple 7 N. 27 1/2 E. 5 1/2

1/8 bed. N. 1/4<sup>o</sup> Lamb 11 N. 88 E. 58

N. 1/8 on E. line Aug 18 N. 48 W. 12 1/2

Do Do W. (4) 38.45 Var. S. 16 <sup>(3-45)</sup>

1/8 bed. E. 1/4<sup>o</sup> Pine stp 24 N. 5 E. 45

N. 1/8 on N. line Birch 12 S. 21 E. 28 3/4

1/8 bed. W. 1/4<sup>o</sup> Pine 12 S. 82 W. 4

" " S. " Fir 10 N. 71 E. 12 1/4

Sec. 34, 31-11. May 21/81.

N. 1/4 P. E. (6) <sup>41.70</sup> 86.00 Var. N. 157 <sup>(4-40)</sup>

S. 1/4 P. N. (3 1/2) 81.50 Var. W. 64 <sup>(3-25)</sup>

ken. Sec. Elm. 18 S. 49 E. 63 1/2

V. 3 1/2

N. 1/4 P. E. on 1/4 line 55.00 B. D. N. 4<sup>o</sup>

Sugar 14 S. 26 W. 52.

Thence S. 70 1/2 E. (v. 4<sup>o</sup>) 3.25

B. D. Elm 14 N. 20 1/2 W. 35

Thence N. 59 1/2 E. 2.18 1/2

B. D. Sugar 14 N. 18 W. 36.

Sec. 35, 31-11.

E. 1/4 P. W. (4 1/2) <sup>-1-40</sup> 75.00 Var. S. 120 <sup>+100 (3 3/4)</sup>

(At 1/2 mile offset N. 1.00)

E. 1/4 P. Aug. stp 14 N. 65 W. 53

Sec. 36 3 1/2 Do Do 14 S. 65 1/2 W. 62

N. 1/4 P. E. S. (5 1/2) <sup>40.48 v. 5<sup>o</sup></sup> 79.64 Var. E. 11 <sup>(4 3/4)</sup>

ken. Sec. + on boulder bears

S. 62 E. 24 3/4 V. 4 1/2

105. } Sec. 36. 31-11. cont'd.

N. 1/4 P. Elm 14 N. 11 E. 72

3 1/2 Birch 16 N. 51 W. 45

N. 1/4 P. E. (6 1/4) <sup>+43'</sup> 80.65 Var. S. 102 <sup>(50)</sup>

Sec. 33. 31-11.

E. 1/4 P. ~~W. 1/4~~ N. 45 W. (V. 60) N. 45 W.

56.26 Var. S. 45 W. 275

Sec. 14. 31-11.

S. W. cor. Ogl. Field notes reason-  
correct. Hence E. (6) 18.50 Var. S. 4.85

and found trees marked. 1/4 S. but  
they did not agree with the  
original notes in any partic-  
ular.

Sec. 13. 31-11.

S. W. cor. N. (4 1/2) <sup>+28'</sup> 41.37 Var. E. 33

Sec. 1. 30-11

N. line 79.50 chains long.

N. 1/4 P. S. (5 1/4) <sup>+28'</sup> 90.69 Var. W. 75 v. 57 1/2

Sec. 12. 30-11.

N. 1/4 P. S. (5 1/4) <sup>+14'</sup> 79.50 Var. W. 32 <sup>(40)</sup>

Sec. 13. 30-11.

N. 1/4 P. S. (5) <sup>+12'</sup> 79.80 Var. W. 164 v. 5

Sec. 8. 30-11.

S. 1/4 P. W. (6) <sup>-30'</sup> 39.80 Var. S. 36

S. W. cor. N. (7) <sup>-40'</sup> 40.00 Var. W. 46

Sec. 24. 30-11.

N. 1/4 P. S. (6) 79.30 hit it.

Sec. 27. 32-11. Oct. 8/81

N. W. cor. E. (5 3/4) 83.03 Var. S. 30

N. E. cor. Sugar 14 N. 9 E. 45

New (D) 11 S. 35 W. 39

Sec. 3. 30-11. Oct. 4/81

N. 1/4 P. S. (5) <sup>(50)</sup> 90.80 Var. W. 1.52 v. (3-50)

Sec. 10. 30-11.

N. 1/4 P. S. (5) 80.36 hit it.

Sec. 7. 31-11. Dec. 31/81

E. 1/4 P. W. (13 1/4) 89.40 Var. S. 16.

107 } Sec. 5, 31-11.  
 S. 1/4 P. N. (6 1/2) 74.15 Var. E. 1.32  
 Do Sugar 12 S. 57 1/2 E.  
 Do 10 S. 38 1/2 W.

~ Sec. 11, 33-10 Mch. 23/82  
 N. 1/4 P. (Sturdevant's corner.)  
 - 1<sup>st</sup> 50' 41.43  
 Do " S. (5) 72.10 Var. E. 2.31.  
 S. 1/4 P. W. (8 1/2) 2.28 to Lake, 11.09  
 across Lake, & the 28.40  
 and Var. N. 5.28

+ 3<sup>rd</sup> 50' 41.28  
 N. 1/4 P. E. (5) 82.50 Var. S. 5.50  
 N. E. cor. S. (5) 27.30 Var. E. 10.3  
 S. M. K. N. (3) 22.27 " E. 9.4  
 E. 1/4 P. Pine 30 S. 61 E. 12 1/4

Gen. Sec. W. bank 11 S. 42 1/2 E. 37 1/2  
 5<sup>th</sup> Do 16 S. 26 W. 17 1/4

1/8 bet. N. 1/4<sup>e</sup> W. bank 20 N. 26 E. 13 1/2  
 Do. S. (2<sup>nd</sup> 10) 32.20 Var. E. 2.8  
 N. 1/8 on S. line, Aug. 12 N. 72 E. 20 1/2.

~ Sec. 11, 33-10 cont'd  
 1/8 bet. N. 1/4<sup>e</sup> W. bank 11 - 70 1/2 W. 9  
 Do Do E. (4 1/2) 20.50 & S. (2 1/2) 13.00 to  
 On E. side 11. S. side Lake. Maple  
 8 S. 85 E. 8. Pine 6 S. 25 W. 8.  
 Gov. Dist. across Lake. 36.68  
 My " North " 22.27 to M. K.  
 on West shore.

At 14.62 1/4 P. on the point  
 S. 1/4 P. Birch 7 N. 35 E. 11  
 W. bank 10 S. 35 W. 11  
 N. 1/4 P. Birch 16 N. 85 E. 21  
 W. bank. 20 N. 43 W. 7

Sec. 28, 33-11, Mch. 31/82  
 N. E. cor. W. (6) 43.14 Var. N. 2.00

~ Sec. 6, 30-11. Apr. 7/82  
 E. 1/4 P. Trees O. K.  
 Do - W. (8) 76.43 Var. S. 29 by long down  
 S. 1/4 P. N. (7 1/4) 92.88 Var. N. 13.  
 - 13' 40.56  
 40.48



Sec. 6. 30-11. contd

N. line Govt 74.23 } 41 chs. from  
 " " My meas. 76.08 } N. E. cor. N. 1/4 P.  
 N. E. cor. N. (6 1/2) } 76.08 Var. S. 22  
 N. 1/4 P. { Aug. 7 N. 82 1/2 W. 16 3/4  
 Do 12 S. 58 1/2 E. 20 3/4

Spencer's N. 1/8 on E. line.

W. (7 3/4) 40, 50 Var. S. & v. (8<sup>2</sup>-10<sup>1</sup>)  
 1/8 bel. N. 1/4<sup>o</sup> bank, 12 N. 70 E. 22 1/2  
 From ben. W. Govt - 35, 25 }

" " " My meas. 35.87 } = 20, 35  
 1/8 bel. W. 1/4<sup>e</sup> Aug. 11 S. 75 1/2 E. 32.

Think there is likely to be a  
 bend to the E. in N. & S. 1/4 line.  
 (Local attraction in swamp.)

Sec. 28. 33-11. Apr. 11<sup>1</sup>/82  
 E. 1/4 P. N. W. low pt. S. W. stub.  
 Near { Bank, 12 N. 58 1/2 W. 42 1/2  
 3<sup>12</sup> { Aug. 18 S. 30 W. 35

Sec. 10. 33-10 Apr. 18<sup>1</sup>/82.

E. 1/4 P. N. (4) 84.80 Var. N. 97

W. 1/4 P. Pine 10 N. 74 W. 15 1/2

4<sup>o</sup> Do 20 S. 82 E. 10 1/2

At E. 1/4 P. & N. E. cor. notes call  
 for trees on which I find  
 the marks defaced.

Sec. 13. 31-11. June 6<sup>1</sup>/82.

S. W. cor. E. (4<sup>10</sup>) 40, 22 Var. N. 1 lb.

S. 1/4 P. E. (4) 39, 50 Var. N. 75

N. W. stub. stj. N. E. lying down.

Sec. 31. 31-11 June 9<sup>1</sup>/82

W. 1/4 P. E. (6 1/4) 83, 26 Var. S. 66<sup>(5<sup>10</sup>-40)</sup>

Sec. 32. 31-11

W. 1/4 P. E. (6<sup>(1-5)</sup>) 79, 67 Var. N. 147

Sec. 33. 31-11.

W. 1/4 P. E. (5) 80, 82 Var. N. 9.<sup>(3<sup>10</sup>-50)</sup>

Sec. 30. 32-11. Aug. 22/82

S. 1/4 P. N. (5 1/2) 78, 97 Var. E. 335.

111.) Sec. 29, 32-11.

S. 1/4 P. W. (4 1/4) 41.32 Var. N. 45

S. W. cor. W. (5) 41.84 Var. N. 19.

S. 1/4 E. (5) 40.43 Var. N. 2.49

S. E. cor. Cherry stg; Elm low stg.  
New (5) Elm 20 N. 48 1/4 W. 49 1/2

Sec. 28, 32-11

S. W. cor. E. (5) 41.36 Var. S. 130

Sec. 12, 30-12, Sept. 1/82

N. E. cor. W. (3 1/4) 40.69 Var. S. 1.59

N. 1/4 P. S. (4 3/4) 80.60 Var. E. 130

Sec. 13, 30-12.

N. 1/4 P. S. (3 1/4) 77.38 Var. W. 2.01

Wentk. lying down. Fir gone.

Sec. 16, 31-12.

Grinnell's  
bents (W. (4 1/2) 40.20 Var. S. 36

W. 1/4 P. (Sugar 20 N. 66 1/4 E. 61 1/2

New 5' Birch 16 S. 45 1/2 E. 67 1/2

S. E. cor. 34 Lank, 14 N. 5 W. 36 1/2 <sup>dro</sup> good.  
34-10 Do 12 S. 58 W. 8 1/2

112.) Sec. 28, 31-12 Sept. 22/82

W. 1/4 P. E. (5 1/4) 79.62 Var. N. 3.55

Sec. 27, 31-12.

W. 1/4 P. E. (5) 81.40 Var. N. 38.

E. 1/4 P. S. E. low stg. N. W. high stg.

" Aug. 8 S. 52 1/4 E. 46

Sec. 34, 34-10 Dec. 6/82.

E. 1/4 P. W. (9) 74.26 Var. N. 270

W. 1/4 P. S. (5) 44.80 Var. W. 32.

E. 1/4 P. Birch 12 N. 80 W. 10

Wentk. 8 N. 85 E. 10

E. 1/4 P. S. (6) 47.20 Var. E. 296

S. 1/4 P. 35 W. (6) 106.82 Var. N. 7.03

S. 1/8 on E. line Lank, 10 S. 51 W. 8

Do. Do W. (10 1/2) 72.76 Var. N. 70

S. 1/8 on W. line Wentk 18 S. 41 3/4 W. 28

W. 1/8 on S. line 35 Wentk, 12 N. 12 W. 13.

S. E. cor. 34. gone - Improperly set  
on line between S. 1/4 P. of 35. and  
S. W. cor. 34. at proportional distance - be

the 1/8 line N. of it had one pine on it.

113. Copy of Deleglise's  
Field Notes. Del.

— Sec. 19. 32-11. Jan. 8/78  
S. E. cor. Spruce, 17 N. 82 W.

Birch 10 N. 64 1/2 E.

Do N. (8+2) 39.93 W. il. il.

E. 1/4 P. Tank, state 14 N. 78 E. 13.

Do Do 13 N. 84 3/4 W. 6.

New. Spruce 7 S. 43 E. 42

Do. Do 8 N. 43 E. 43

11

Deleglise made some  
surveys in Sec's 30 + 21  
from the Kitross corner  
for the E. 1/4 P. of 20 —  
supposing it to be the E. 1/4 P.  
32 — 11.

114.  
— Sec. 28. 31-10. Dec. 10<sup>1880.</sup>  
N. 1/4 P. Birch 11 N. 86 E. 18 Del.

Dead Banks, 17 S. 13 W. 26

New Birch 10 S. 60 E. 67

Do 9 N. 60 W. 57

Do E. (8)

— Sec. 35. 31-10 Dec. 10/80

N. 1/4 P. Sugar 13 S. 21 W. 8

Bank, alte 16 N. 41 1/2 E. 17

New Spruce 9 N. 54 W. 5-4 1/2

Birch 20 N. 5 E. 32 1/2

Sugar 16 S. 40 1/2 E. 61 2/3

SC 78.28

S. 1/4 P. Pine 38 N. 56 W. 97

New Sugar 12 N. 15 E. 66

Do 12 N. 5-9 E. 75

— Sec. 36. 31-10 Dec. 13/80

E. 1/4 P. Oak, alte. 25 N. 73 1/2 E. 54 1/2

New Elm 12 S. 42 W. 85

115.

Sec. 36. 31-10 continued

Del.

W. 1/4 P. Elm 11 S, 19 N, 87  
 New Sugar 9 N, 46 N, 57  
 Elm 17 N, 49 E, 66 1/2  
 Sugar 15 S, 63 1/2 E, 72 2/3

Sec. 35. 31-10 Dec, 14/80

W. 1/4 P. Hemk. 30 S, 42 N, 88  
 New S, 12 N, 70 N, 98 1/2  
 Hemk, 18 N, 35 E, 102 1/2  
 Ch 13 S, 32 E, 84

Sec. 34. 31-10 Dec, 15/80

E. 1/4 P. W. (6-23) 78.76  
 W. 1/4 P. Birch <sup>U.S. N, 51 N, 24</sup> 12 S, 26 N, 1A  
 Do <sup>U.S. S, 70 E, 16</sup> 8 N, 47 E, 24  
 New T. 13 S, 35 1/2 N, 68  
 h, 10 N, 38 N, 69  
 P, 11 N, 25 E 47 1/2  
 P 20 S, 69 1/2 E, 77 1/2

116.

Sec. 25. 31-10. Dec, 16.

80

Del.

W. 1/4 P. Hemk, 10 S, 41 E, 38  
 X Sugar <sup>U.S. 47</sup> 8 N, 76 1/4 N, 9  
 N. N. cor. Birch <sup>30</sup> 16 N, 7 E, 13  
 New W. 14 S, 57 E, 99 1/2  
 W. 16 S, 32 N, 79

W. 1/4 P. Elm 18 N, 24 E, 51  
 New X Sugar 16 S, 48 N, 53  
 W. 1/4 P. (Fir (alt) <sup>U.S. Pine</sup> 9 S, 4 1/2 N, 17 2/3  
 Do 11 N, 27 1/2 N, 10  
 New P. 12 N, 55 1/2 E, 77 1/2

Balsam 10 S, 62 E, 119  
 H. 12 S, 25 1/2 N, 119 3/4  
 Spruce 10 N, 61 N, 83  
 Do W. (4-10) 40, 97.

Sec. 27. 31-10. Dec, 25/80

E. 1/4 P. Birch 11 N, 86 E, 18  
 U. 5 Dead W. 17 S, 13 N, 26  
 New Birch 10 S, 60 E, 67 2/3  
 Do 9 N, 60 N, 57

Sec. 27. 31-10 continued  
Del.

E, 1/4 P. N. (5) 77.08  
 N, 1/4 P. Birch 11 N, 60 E. 13  
 H. 16 N, 22 1/2 N, 31  
 New } H. 12 N, 26 E, 45 3/4  
 H. 10 N, 31 E, 30 1/4  
 H. 22 N, 18 N, 53 1/4

Sec. 27. 30-12

N. E. cor Aug, 14 N, 40 1/2 E, 16 3/4  
 New Aug. 13 S, 31 N, 2 1/3  
 Birch 18 N, 38 1/2 E, 16 1/4  
 Aug, 15 S, 52 E, 19 4 1/2  
 Ib, 33 N, 70 N, 138

Sec. 26. 30-12 Jan. 10/81

N. E. cor Elm stp, 10 N, 54 1/2 E, 5 1/4  
 P. " 29 S, 58 E, 24 3/4  
 Sugar " 22 S, 31 N, 99  
 Birch " 29 N, 49 N, 31

Sec. 26. 30-12 cont.  
Del.

S, 1/4 P. Fir stp, 9 S, 21 N, 12 1/2  
 Dead Ib, 23 N, 40 1/2 N, 13 1/4  
 New } H. 19 N, 37 E, 15 1/2  
 H. 25 N, 28 E, 143  
 S, 10 N, 39 N, 73  
 Ib, 8 N, 34 N, 87  
 Do N, (6) 82.03 Var. E, 38.  
 N, 1/4 P. Birch 28 N, 64 1/2 E, 105 1/2  
 New } H. 28 S, 12 E, 125-  
 H, 16 S, 64 N, 85 3/4  
 N, 1/4 P. Aug, 14 N, 81 N, 5-  
 Do 16 S, 76 1/2 4  
 New Birch stp, 33 N, 43 E, 53 1/2  
 S, 29 S, 33 1/2 E, 72  
 S, 19 S, 42 N, 82  
 h. 17 N, 63 1/2 N, 59 1/4



119.

Sec. 25, 31-11. Apr. 29/79

N. E. cor.	E.	15 N, 29 E.	29	Del.
	S.	15 N, 60 1/4 W.	23	
	E.	26 S, 23 3/4 W.	36 1/2	
	S.	15 S, 74 E.	10	

Sec. 24, 31-11.

E. 1/4 P.	Birch	24 N, 67 1/4 W.	24
	Do	24 S, 37 3/4 E.	28
N. E. cor.	Ing. alt.	24 N, 43 1/4 W.	51
	Do	28 S, 5 W.	57
	E.	16 S, 56 E.	41
	down Sugar	16 N, 20 E.	

Sec. 8, 31-11, July 11/79

N. N. cor.	E.	91.45	
N. E. cor.	Birch	15 S, 65 E.	23
	Sugar	8 N, 50 E.	31

Sec. 26, 31-10 Sept. 23/79

E. 1/4 P.	E.	18 N, 24 E.	51
New	Sugar	16 S, 48 W.	33

Sec. 26, 31-10 cont'd 120.

E. 1/4 P.	N.	(8)	80.08	var.	S.	5
N. 1/4 P.	Birch	10 S, 60 E.	67 2/3			
New	Do	9 N, 60 W.	57			

Sec. 27, 31-10 Sept. 23/79

E. 1/4 P.	N.	(4 <sup>5</sup> -51)	77.31	var.	N.	19.
N. 1/4 P.	No.	12 N, 26 E.	45 3/4			
New	H.	10 N, 31 E.	30 1/4			
	H.	22 N, 18 W.	53 1/4			
S. 1/4 P.	Ing.	9 N, 57 W.	54 1/2			
New	Birch	20 N, 53 E.	32 1/2			
	Sugar	16 S, 40 1/2 E.	61 2/3			

N. 1/4 P.	No.	16 S, 31 1/2 W.	38 1/4
New	K. a.	8 N, 25 3/4 E.	50

Sec. 23, 31-10 Oct. 4/79

N. 1/4 P.	H.	14 N, 43 1/2 E.	43 1/2
New	T.	14 S, 48 W.	80 1/2
	H.	23 N, 61 3/4 W.	65 1/2

Sec. 14, 31-10. Oct. 4/79

S. 1/4 P. N. (9-58) 77.17 Del.  
N. 1/4 P. Aug 15 N. 47 E. 45 1/3  
New Do 17 S. 46 N. 73 1/3  
S. 1/4 P. 13 N. 63 3/4 W. 38 1/4

Sec. 11, 31-10. Oct. 4/79

N. 1/4 P. Aug. 10 S. 43 W. 82  
New Elm 27 N. 40 1/2 W. 45  
Do E. (6-12) 80, 36 Var. N. 53  
E. 1/4 P. Sugar 15 S. 37 E. 66 3/4  
New Elm 17 N. 43 W. 49 2/3

Sec. 12, 31-10 Oct. 10/79

N. 1/4 P. Aug. 15 S. 37 E. 66 3/4  
New Elm 17 N. 43 W. 49 2/3

Sec. 36, 31-11. Oct. 17/79

S. W. cor. S. 8 N. 53 E. 32 5/3  
New S. 12 N. 32 1/4 W. 327  
Do N. (4-5) 37.60

Sec. 26, 31-11. Oct. 17/79

S. 1/4 P. S. 9 S. 38 E. 47 Del.  
New S. 9 N. 84 3/4 W. 95  
Do N. (4) Var. E. 152  
N. 1/4 P. S. 18 N. 69 E. 67 1/2  
New

Sec. 7, 31-12 Oct. 31/79

N. 1/4 P. Sugar 15 S. 65 E. 62  
New Birch 22 N. 44 1/2 W. 35 1/4  
Do S. (2-42) 80, 80

Sec. 31, 31-12 Nov. 18/79

N. 1/4 P. Birch 19 S. 45 1/2 E. 71 1/4  
New Sugar 16 S. 61 1/4 W. 62  
Aug. 13 N. 68 3/4 W. 53 1/4

S. W. cor. Hole drilled in stone +

New Birch 23 N. 65 E. 74  
Do N. (6) 40, 20 Var. W. 161.  
N. 1/4 P. Birch 19 S. 45 1/2 E. 71 1/4  
New Aug. 16 S. 61 1/4 W. 62  
Do 13 N. 68 3/4 W. 63 1/4

123.

Sec. 31, 31-12 cont'd

N. 1/4 P. E (4) 83, 40 Var, S, 183

S. 1/4 P. N. (4) 80, 51 Var, W, 218

N. 1/4 P. E, 13 S, 47 W, 57

New E, 18 N, 26 1/2 W, 26 1/4

Sec. 10, 31-10 Jan. 15/80

N. 1/4 P. Aug. 11 N, 60 1/4 E, 29 1/2

New Birch 12 S, 51 E, 50 1/2

Pine str. 32 N, 77 1/2 W, 22 3/4

Do S, (7-21) 78, 58

S. 1/4 P. H 16 N, 23 1/4 E, 58 3/4

New Spruce 9 S, 71 3/4 E, 23 1/2

H 15- S, 69 W, 51

H. 15- N, 90 W, 21

H, 11 N, 46 1/2 W, 21 2/3

Sec. 19, 32-10 Aug. 27/80

N. 1/4 P. E, 20 N, 63 E, 70

New S, 12 S, 80 3/4 W, 38

H, 23 S, 23 W, 67 1/4

124

- Sec. 19, 32-10 cont'd

N. 1/4 P. N. (3-52) 42, 07

N. W. cor. H. 18 N, 70 1/4 E 79 1/2

New S, 11 S, 28 W, 38

Sec. 18, 32-10 Aug. 28/80

S. W. cor. N. (6) 40, 73 Var. E, 193

N. 1/4 P. Birch N, 97 W, 26

Juniper, N.S.

Balsam 7 S, 24 E, 11

Do T 14 N, 45 1/2 E, 64

New I 16 S, 52 E, 93 1/2

Do N. (6) 39, 90 Var, E, 67

N. W. cor. Spruce 10 N, 32 E, 3

New Spruce 24 N, 21 E, 83 1/2

Do 12 N, 56 W, 64 3/4

T 11 S, 62 W, 78

Fir 11 S, 76 E, 88 1/4

## Sec. 8, 31-10

1	S, 1/4 P.	Maple	14 N, 12 E.	22
2	New	Pine	38 N, 60 1/2 E.	30
		Maple	13 S, 14 W.	75 1/2
		Do.	13 N, 90 1/4 W.	47 1/2
	Thence	N. (8)	84, 00 Var. N. 8.	
	N, 1/4 P.	Dead Spruce	15 S, 29 1/2 E.	25
		Birch	7 N, 56 1/4 W.	18

## Sec. 10, 31-10.

E, 1/4 P. N. (7-44) 39, 98 Sec. cor.

		Birch	10 N, 62 E.	18
		Do	22 S, 27 W.	8
	New	Sugr.	13 S, 51 E.	33
		Do	13 N, 41 W.	41
	N, 1/4 P.	Sugr.	11 N, 60 1/4 W.	29 1/2
	New	Birch	12 S, 51 E.	50 1/2
		Pine stp.	32 N, 77 1/2 W.	22 3/4

N, 1/4 P. S. (7 1/4) 78, 5-8 S, 1/4 P.

New { Hemk, 16 N, 23 1/4 E.

B. Fir { Sparna 9 S, 71 3/4 E.

Hemk, 15 S, 69 W.

Do 15 N, 90 W.

Do 11 N, 46 1/2 W.

N, 1/4 P. { Birch 12 N, 73 W.

Do 25 S, 28 W.

New { Birch 20 N, 48 W.

Do 15 S, 31 E.

N, 1/4 P. E. (8) 81, 44 Var. S, 63

39, 57 E. of N, 1/4 P. and

38 96 S, " N, " " sel-

ken Dec. Birch stp 22 N, 10 1/4 E.

Sugr. " 14 S, 81 3/4 E.

Elm 23 S, 43 W.

Do 11 N, 43 W.

4

Sec.	T. R.	P.
15.	31-11	✓20
14.	31-11	✓20
4.	31-11	✓20
8+9.	31-11	✓21
8, 9, + 16.	31-11	✓22
22.	31-10	✓22
{	29.	37-11 ✓23 ✓
	30.	37-11 ✓23 ✓
	28.	37-11 ✓23 ✓
5.	40-11	✓23
25.	40-10	✓23
7.	22-15	✓24
16.	31-11	✓24
20.	31-11	✓25
31.	31-11	✓25
6.	32-10	✓25
1.	34-10	✓26
12.	34-10	✓26

15.	34-10	✓26
30.	32-11	✓26 + 27
29.	32-11	✓27 28
17.	31-11	✓28
7.	22-15	✓29
25.	33-10	✓29 + 30
36.	33-10	✓30
31.	32-11	✓30
{	22.	37-11 ✓30 + 31
	31.	37-11 ✓31 + 32
31.	41-11	✓32
29.	41-11	✓32 + 33
33.	41-11	✓33
17.	40-11	✓33
8.	27-11	✓33 + 34
6.	22-15	✓34
30.	31-12	✓34 + 35
176.	31-11	✓35



Sec.	T. R.	P.
9.	33-10	✓35
18.	33-11	✓36
9.	33-11	✓36 + 37
31.	36-11	✓37
30.	36-11	✓38
21.	47-47	✓37 <sup>x</sup>
30.	36-11	✓38 <sup>x</sup>
6.	31-11	✓38 <sup>x</sup>
35.	33-11	✓38 <sup>x</sup>
23.	31-11	✓38 <sup>x</sup>
13.	34-10	✓39
35.	39-11	✓39
4.	39-11	✓39 + 40
1.	39-10	✓40
28.	41-11	✓40
34.	41-11	✓40
35.	39-11	✓40
1.	40-10	✓41.

Sec.	T. R.	P.
34.	39-11	✓41
14.	38-11	✓41
9.	32-11	✓41
28.	30-11	✓41
34.	32-11	✓42
33.	32-11	✓42
25.	38-11	✓42
31.	32-12	✓42 + 43
36.	32-11	✓43
28.	36-10	✓43
16.	35-9	✓44
15. 21. & 16.	" - "	✓ "
9.	35-9.	✓44
10.	35-9	✓45
25.	39-8	✓45
29. 30. 31 & 32.	34-10	✓45 + 46
30.	34-10	✓46
25. 34	35-9	✓46
25.	31-9	✓46

Sec.	J. R.	P.
32.	34-9	✓46
2.	31-11	✓47
31.	31-11	✓47 + 48
22.	32-10	✓48
27.	32-10	✓48
1.	34-10	✓49
12.	34-10	✓49 + 50
31.	31-11	✓50 + + + +
16.	36-11	✓50 + 51
3.	30-11	✓51 + 52
17.	31-11	✓52
7.	31-11	✓53
13.	32-11	✓53
24.	38-11	✓53 + 54
3.	30-12	✓55 + 56
4.	30-12	✓56
16.	31-12	✓56
28.	31-11	✓57

Sec.	J. R.	P.
32.	31-11	✓57 + 58
8.	30-12	✓58
16.	34-10	✓59
31.	31-11	✓60
14.	31-11	✓60
28.	31-11	✓60
21.	40-10	✓61
31.	31-11	✓62
4.	30-11	✓62 + 64
18.	34-11	✓64
20	27.	31-11 ✓64
23	26.	38-11 ✓65
31.	37-11	✓65
6.	36-11	✓66 + 67
29.	37-11	✓66
25.	31-10	✓66
13.	32-11	✓67 + 68

Sec. I. R. P.

21. 32-11 ✓68

16. 32-11 ✓68

36. 32-12 ✓69

3. 31-12 ✓69

15. 32-9 ✓69

3. 30-11 ✓69

25. 31-11 ✓69

7. 34-11 ✓70

7. 8. 17. 18. 39-9 ✓✓70 & 71

1. 36-10 ✓71

4. 32-11 ✓71

23. 36-8 ✓72 & 73

14 & 23. 36-8 ✓73 & 74

12. 17. 36-9 ✓✓75 & 76

20. 30-11 ✓76

32. 31-11 ✓77

20. 31-11 ✓77 & 78

11. 30-11 ✓78

Sec. I. R. P.

12. 32-11 ✓78

20. 31-11 ✓79

5. 38-11 ✓79 & 80

1. 36-10 ✓80

31. & 32. 31-11 ✓81 & 82

22. 33-11 ✓83

6. 36-9 ✓83 & 84  
+ 85

5. 36-9 ✓86 & 87

4. 36-9 ✓87 & 88

8. 36-9 ✓88 & 89

6. ~~50~~. 36-8 ✓89 & 90

20. 36-8 ✓90 & 91

7. 36-8 ✓91

9. 42-9 ✓92

2. 40-9 ✓93

19. 32-12 ✓93

15. 31-11 ✓93

8. 39-5 ✓94

Sec. J. R. P.

19 + 30	39-5	√94 + 95
30.	39-5	√95
17.	39-5	√96
8 + 20.	39-5	√96 + 97
16.	34-9	√97 + 98
18.	33-11	√98
10.	32-12	√98 + 99
20.	36-8	√100 + 101
35	33-11	√101
26.	33-11	√102
13.	34-10	√102 + 103
34.	31-11	√104
35.	31-11	√104
36.	31-11	√105
33.	31-11	√105
14.	31-11	√105
13.	31-11	√105
1.	30-11	√105

Sec. J. R. P.

27.	31-10. ✓	120
23.	31-10. ✓	120
14.	31-10. ✓	121
12 + 11.	31-10. ✓	121
36.	31-11. ✓	121
26.	31-11. ✓	122
7.	31-12. ✓	122
31.	31-12. ✓	122 + 123
10.	31-10. ✓	123
19.	32-10. ✓	123 + 124
18.	32-10. ✓	124
8.	31-10. ✓	125
10.	31-10. ✓	125