



D. H. VAUGHAN # 5

1
This Book opened February 20th 1901

By D. H. Vaughn
County Surveyor

Oneida county

Wisconsin

SEC. 27, 38, 10, E February 1901

South from West 1/4 Post Var 3° 30' E

3877 fell 52 1/2 West of corner Set

new Post from NW bearing dead

copied on Page 345

SE Bearing burned down. Stump

left about 2 in high found bottom

of old Stake. connected line north #

1938 1/2 + Set 1/8 Post | Sugar 10 S 63 E 14
connected Var 4/5 | do 8 S 85 W 14
SE 135

East from SW corner Var 3° 30' E

3916 fell 57 1/2 N of 1/4 Post org Bearing

Set new Post

connected West to corner

" Var 240 - SEC 147

February 27 - 1901

East from West 1/4 Post. Var 3° 30' E

8305 fell 7.33 North of 1/4 P org Bearing

Set new Post

connected Var 1° 30' West

SEC for connection 8-87/100

county record

SEC 27-38-10 Feb 22 - 1901

3

North from South 1/4 Post Var 3° E

78. intersected North SEC. line.

copied on Page 6

looked 2 hours for 1/4 Post but could not find it. I then went to NW corner

and run East Var 3.30

February 23 - 1901

8378. fell 421 North of corner. both

org. Bearings are OK

came west + Set 1/4 Post at

345

4189 - 1/4 Birch 16 S 17 1/2 E 22

Sugar 12 N 32 E 52

I found my N + S Random at

7757 was 8 links W of my 1/4 Post

Went South and Set center at

Intersection of corrected 1/4 lines

1/4 Birch 14 South link
Hemlock 18 N 36 W 11 1/2 "

Distance to N 1/4 Post 4035

" " S 1/4 " 3722

" " E 1/4 " 4348

" " W 1/4 " 4040

county record

4 Sec. 27-38108 Feb 23-1901

corner Var of N Sec line is 40' E

copied on Page 345

" " " N+S 1/4 line is 2° 56'

FEB 24 1901

commenced at S 1/8 Post on W Sec line

and run East Var. 15' E

3978. Intersected corrected N+S 1/4 line

1850 N. of S 1/4 Post.

Set 1/8 Post 1861 South of center end

same distance from S 1/4 Post

which made my departure

11 links South of 1/8 Post

Linden 20 N 10 E 15 1/2

Hemlock 8 S 67 W 45

corrected 1/4 line South to 1/4 Post

+ 1/8 line W to 1/8 Post. Sec line 27/100

" " N+S 1/4 line 10/100

County record

made on 27 at 11 AM

I only cut out the S 1/2 SW

5
Sec 18-36-98 March 4 1901

I wanted ^{to} cut out lot 3. in N.W.S.W I found

Mansell had run the E+W 1/8 line and had

Set Temporary 1116 Post. HE then run north

from W 1/8 Post on S Sec line to Temporary

Post, his Random being 4 links east of said 1116 P.

I found two of his hubs lined up on

same adjusted Vernier which then read

6° 10' E Var. I run north commencing

with Mansell's Talley 4 in 2000 chains

continued his line north to 4000 chains

on Talley 8. I could not find 1/8 Post or

any indication of an E+W 1/4 line

do not know if center is set. I run west

with Pocket compass + spotted a line

to lake about 40 rods. cold + windy

came home at 4:30 PM

work done for Sec corner

all copied on Page 201

County record

6 See line Bet 13+14. 36-8, E

March 12 1901

as there was no meander on
River & commenced at car to
13-14-23+24 which I found
in center of Road. I set up a
a flag at corner. I went on
to a hill about 15⁰⁰ above North
and lined instrument between
corner & 1/4 Past. Then continued
line to Wisconsin River & set
meander E line 8 S 30' W 275'
no other near
did not chain as I only
wanted to retrace goat line.
Triumph was all gone when
meander originally blazed
Var of this was 445' at River

Copied on Page 117 county record

7
SEC. 26-39-5 E, March 28 1901

North from E 1/4 Past - Var 330 E org. B
4007 fell 9 1/2 W of corner org. B

connected S to
2003.2 + set 1/8 Past

W Pin 7 N 58 E 20

do 7 S 14 E 18

West from NE corner Var 320 E

1973 fell 15 1/2 N of 1/8 P. set by Mansell

connected line E to corner

South from 8 1/4 P. on N SEC line Var 345

3976. fell 14 W of 1/8 P set by Mansell

West from center Var 430 E (This

center was also set by Mansell)

3992 fell 88 links west of 1/4 P. org. B

Came east + set 1/8 Past. Equidistance

between center + 1/4 Past

W line 10 N 61 W 36

" " 8 S 73 E 35

Ran East from this 1/8 Past Var 40 E

400. Tamarac 18 in offset N 2 links

2620 Creek 15 links Riv S

8 Sec 26-39-5 E March 30 - 1901

2200 Tannage 12 in offset South

2 links to auto line

394 1/2 feet 57 links South of 1/4 Post
connected West + Set 1/16 Post
at intersection of canceled 1/8 lines

Tannage N 73 W 15

to 4 S 40 W 5 1/2

This 1/16 Post stands about 3 links from
the bank of the creek =

found trespass along South
line of N 8 N E = 1000 feet of line
and 15 cords of Spruce

finished at 5.30 P.M.

Sec 36-39-10 E April 3 1901 9

North from S E cor
Took goat chaining to Meander - 642
then set flag at meander on north
side of lake, and chained across an 10

11000 chains from corner ^{on 2-15 E} set Temp 1/4 Post
5584 " " " over lake

Distance across Lake is 63 links
longer than distance given by
U.S. Surveyors. Proportioned

This distance and moved Temp
1/4 Post 43 3/4 100 North

Run apart from (This the east 1/4 P)
^{2500 over lake} 8000 Car 10 E set Temp 1/4 P as I could

not find goat 1/4 P. set Post 11

Went to SW corner found Post set
by Mansell. in Road near culvert
found one ^{goat} bearing which was down
this bearing was marked Sec 35. and
field notes said it was N 11 E 376

over

cont. Sec 36-39-10 E April 4th 1901

I set Post from this bearing no others could be found. My Post is about 200 chains south. + the same west from Monroville. I set flag at SE corner and chained through same

copied on Page 351
8229 to SE corner

Set 1/4 Post at 4114 1/2 and

Put in Iron Post at 1/4 Post and Sec. corner

James Donnelly and Mr. Keenan identified the exact spot where bearing stood and I put an Iron

Pin 15 in long and 1/4 in dia in place

Where original bearing stood

The Iron Pin for SW corner is 2 feet long by 1 inch in dia and has a 3/2

inch Pinion on top end

= 5 =

I then ran north from SW corner

on 2° W Van county record

8882 held 2.58 ch W of corner

Sec 36 cont April 5-1901

This corner was set from original bearings by Charles Russell and James Donnelly and identified by them also the stump to one of the original bearings is still there with evidence to convince me the Post is OK. I went South on Random line and set 1/4 Post Equidistant between SW + NW corners ^{44 1/2 chains} and on true line between same. This 1/4 Post is an Iron pin 3 feet long and 1 1/4 inches in dia and driven 20 inches into ground no trees near this Post as at SW corner on S 1/4 Post to make

Picked up E + W 1/4 line and found at 7559 I was South of 1/4 Post 5.18 ch

corrected Van of E W 1/4 line is 2° 54' W

Dire for correction is .6. 85/100

county record

Sec 36-39-10 east of line 5-1901

North from South 1/4 Past Var 3.30' W

9035 well 4.81 ch West of 1/4 Past
*copied on Page 351*Both org B are there west one has
been cut but the stump with mark
is very plain

Canceled line west to center

" Var 6.09' W Sec 5.32/100

Set center at intersection of
corrected 1/4 lines

Coursed of N+8 1/4 line 633 W

" " E+W " " 252 W

Distance to N 1/4 Past 4747

" " S " " 4288

" " E " " 3460

" " W " " 4099

2373 N of center Set 1/8 Past

W Pin 10 S 42 W 53

N do 20 S 38 E 76

1730 East of center Set 1/8 Past on ice

West from N 1/8 corner Var 20.1/2 W

2806 1/2 full 1/4 link South of 1/4 Past

14 03 1/4 E of 1/4 Past Set 1/8 Past

county record

only

Sec. 36-39-10 E east of line 6-1901

N Line 10 N 38 W 74

do 8 South 103

*copied on Page 351*Canceled E+W 1/4 line East from center
to lake and set meander

2584 West of East 1/4 Past

W Pin 16 S 27 W 75 1/2

Red oak 12 S 39 W 86

North from E 1/8 Past on E+W 1/4 line on ice

4350 well 11 1/2 E of 1/8 Past
Var 3.30' W

Canceled South to lake and at

1100 North of 1/8 Past Set Meander

1 Line 14 N 13 W 77

CENTE. of SECTION

N. Pin 12 N 48 1/4 E 295 links

NO OTHERS NEAR

East from N 1/8 Past on N+S 1/4 line

APRIL 7-1901

Var 930 W

3132 full 6 links N of 1/8 Past Set by Barr

county record

Canceled W + Set 1/16 Past

N Pin 12 S 53 1/2 W 84

do 11 S 78 E 123

Finished
April 7
1901

14 See 28-37-8 E April 9 - 1901

South from N 1/4 Post on 9 B Van 330 E

6593 Intersected S 8 E line 858 W of 1/4 P.

This 1/4 P. is in lake. found west Meander
also Meander on E side of lake also
Meander 1774 West of S E corner and

changed west to Meander 4550 West of S E
corner found distance 2.16 ch shorter
of return distance given in gov's field

notes = Proportioned distance and set
1/4 Post on 12 E 490 East of Meander

corrected line North from 4000 chains
to 2000 chains S. of N 1/4 Post

This was all The parties wanted
done finished April 10 - 1901

See page ~~10~~ 1 Book opened 12.1915
" " 17 This book for map.
copied on Page 153 county record

15

See 6-37-9 E April 22 - 1901



Sec 6-37-9-E April 22-1901

North from South $\frac{1}{4}$ Post Var 3.06° E

Copied on Page 213

4220. full 23 links East of center set by

M.E. Mansell. orig Bearings of S $\frac{1}{4}$ P2110 North of $\frac{1}{4}$ Post Set $\frac{1}{8}$ Post $11\frac{1}{2}$ West

of Random { W.P. STUMP 17 N 26 W 48

do do 26 S 8 $\frac{1}{2}$ W 64converted line S to $\frac{1}{4}$ Post

I Then Run a line S on converted Var

of $\frac{1}{4}$ (which is 318) 20.00 chains & into

West Side of Small Lake but State but

made no bearings

East from $\frac{1}{4}$ Post Var 3.30° E

4184 full 9 links South of S E corner

The snow way bearing is ok

" Birch is down but figures

as plain

converted line W to $\frac{1}{8}$ Post which ISet at 2092. + $4\frac{1}{2}$ N of Random

{ W.P. STUMP 20 N 45 W 64

North from S E corner Var 3.30° E

3976 here 96 W of Mander Post

County Record

I then went South on line to a point

Sec 6-37-9 East April 23-1901

3430. N of S E corner on converted line and

turned off a right angle west and run

west 2196 to get by Lake and wet Marsh

Then turned off a right angle and run

North 928 chains & intersected E & W

 $\frac{1}{4}$ line established by Mansell.

3430 + 928 = 4358. distance of S E

line between S E corner + $\frac{1}{4}$ Post in

Lake as established by Mansell.

I Then run East from center of S E

an $\frac{1}{4}$ line & at 1960 chains intersected

The Point where I intersected same line

on right angle North. 1960 + 2196 = 4156

(distance of E & W $\frac{1}{4}$ line from center to $\frac{1}{4}$ Post in Lake) I found The corner of

Turtles board fence to within 2 links of

where $\frac{1}{8}$ Post should set, but I did notchange it & used The fence Post for $\frac{1}{8}$ Post

{ Did not put any Bearings

County Record

20 Sec 6-37-9-Contⁿ April 23-1901

I then connected & Sec line from meander at 2179 ch. N of SE corner set 1/8 Post on connected line - found an 1/8 Post on line but 30 links N. this Post was marked 1/8 S. I used the same bearing
 Red oak 12 N E 3 1/8 W 29 1/2 E

I then run west from this 1/8 Post 4170 feet 191 S of 1/8 Post

connected this line & 2135 ch. to 1/16 Post
 April 24-1901

Run south from 1/8 P on E & W 1/4 line Van 3.30-5

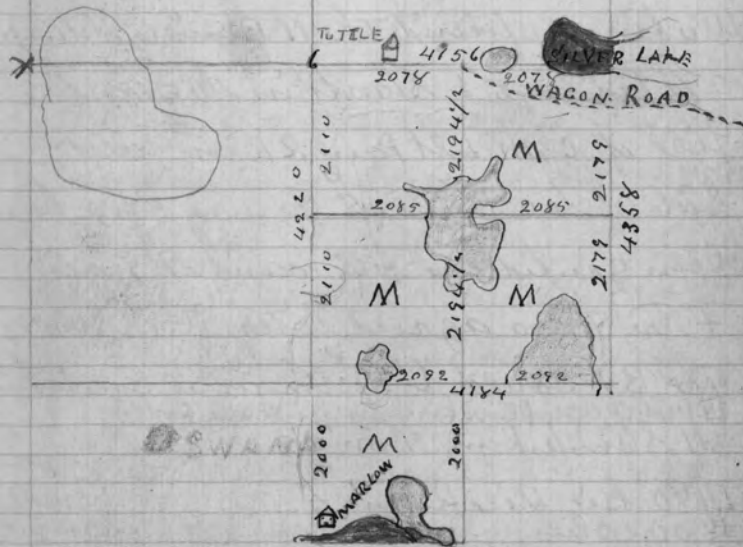
4289 feet 102 S of 1/8 Post

I then started a line south about 10 ch & then went north and set 1/16 Post in center of SE 1/4. in wet marsh water was too deep to get bearings.

finished at 10.30 April 24-1901
 conty Record.

April 25-1901
 N S Ward told me today that Seivwright did the work in Sec 6-37-9-8 but I don't know it.

Sec 6-37-9-8



36-6E of 29-1901

North Bet 34 + 35

I could not find cor to 34-35-2 + 3
and sent for George Smith Co. Surveyor
of Lincoln Co. as he had used it before.
We finally found The N Bearing. Stump
2 1/2 feet high & stands in the edge of a
fill of c.m. & St Paul RR on west
side of track. The S Norway Pine has
been grubbed out but found the Roots
& the two agreed with Field notes
The BT could be distinguished on the
- Put a couple in pin in for corner post
- N Stump. Run N on Card 3°

1480 Big Rice Pine

1800 other "

5850 Swamp very wet water 2 feet deep

8208 fell 107/2 E of corner orig BT

but are all dead

Corrected line South Var 345°E

4104 Bet 1/4 Post

W Pine Stump 44N 34E 37

(The Corner of 2-3-34 + 35 is 17 1/2 lines)
West of center of RR Track

36-6E continued 30-1901

I commenced at corner to 26-27-34-35
and Run N Var 63°E

1972 fell 12 links N of 1/8 Post Bet by
George Smith of Tomahawk
corrected line S. to corner

I then commenced at the 1/16 P
in center of SE 1/4 of Sec 27
and Run N Var 6°E

1972 fell 3 links W of 1/8 P. Set by G. Smith

I then Run N from this 1/8 P Var 6°E

Run 40 chains & set line stakes

and went to cor of 22-23-26 + 27

which I identified by the 2 South

Bearings both N Pine Stumps have been

Burned but could still see some of the

marks of Scubbing Iron

I then run west from this cor Var 41°E

3971 fell 78 links N of 1/4 Post bet by Geo Smith
could not find orig. BT. but found 2 Stumps
which correspond with Field notes
over

Remarked orig BT. and
used couple in pin for corner post

36-6-8 cont

I made New Bearings Bk Pine 8.9 43 1/2 E 67
 corrected Var 5.07 E DO 8 N 37 3/4 W 46

went East on Random + at

195

1985 Set 1/8 Post 39 links S of Random

W Pine 10 S 4 1/2 W 40
 W Birch 8 N 46 E 20 1/2

I then Picked up my N+S 1/8 Random and at
 4148 fell 7 1/2 W of my 1/8 Post 0 0 0

corrected this 1/8 line S 4148 to
 1/8 Post for Town Road

I then commenced at 8 1/8 P. on B&C line

B&C line 22 + 27 + run N Var 3.30 E

8000 Set line stakes + went to corner of B&C

+ 22-23-14+15. found the 2 East orig BT

I then Run West on B&C line Var 4° E

+ 6400 butted met mark

7920 Set Temp corner + Run west as I could

* not find Orig BT

+ 8959 full 90 links west of 1/4 Post Orig BT

+ The Norway Pine had been cut. But

+ Bench mark was Plain Set Post

36-6 E cont May 3-1901

* found a shortage of 53 links in Runway
 11879. Proportioned distance and moved
 Temp: corner East 35.65/100.

I then went South 1/2 mile but could
 not find 1/4 Post + went South to corner
 of 21-22-27+28 which I identified by
 3 of the orig B.T. They are all down and
 will soon be gone. I made 2 new ones

+ Cedar 8. N 62 1/2 E 37

TAN 10 3 45 W 14

Run N from this corner Var 3.30 E

+ 8037 full 153 west of Temporary corner

+ corrected onto this corner + Run north

Var 2.25 E

+ 3200 over Swamp

8007 full 84 West of corner to 9-10-15+16

+ which I identified by orig BT

+ The west of Pine is a stub 60 feet high
 East of so down + figures nearly

+ gone: the BK Pine which stood N 57- E 20 1/2

is gone found stump with marks on it

+ Set Post and made new Bearings

corner to Post 30 E

Survey of Road for Town of Woodburn
commenced April 29th 1901

Commencing at a Stake which stands
on Town Line bet towns 35 & 36 N Range
6 East, and 1.31 chains W of corner to
Sections 2-3-34 & 35 and is 100 feet West
of center the St Paul R.R. track

Thence North Var 1.15° E along the
Right of Way of said R.R.

1484 Intersect Stream High Bank Run W

1400 over

2150 Intersect Sec line bet Sec 34 & 35

6055 Sec line is 2.38 ch west of Right of Way

Thence N 95.5° E (Vernier on 3.45° E
Same course of Sec line

821 ch Intersect Swamp $821 + 6055 = 6876$

Thence N 153.0° E

889 over Swamp $889 + 6876 = 7765$

Thence N 38° W

765. — $765 + 7765 = 8530$ ch

Road cont 30 & May 1-1900

Thence N 153.0° W

652 ch $652 + 8530 = 9182$

9182 from Place of beginning Intersected

Sec line Between 26 & 27-752 North

of corner to Sec 26 & 27-34 & 35

Thence N on this Sec. line

^{50'} 1220 to $1/8$ Part $1220 + 9182 = 10402$ ch

after the Intersection of Section
which is in Swamp

300 Intersect Stream to link with Sec

360 over

425 over Swamp

700 in E Edge of Hay Meadow

1220 $1/8$ Part

Thence North 18° W $730 + 10402 = 11132$ ch

" " 56° W $1287 + 11132 = 12419$

" " $46 1/2^{\circ}$ N $968 + 12419 = 13387$

to E $1/8$ Part on E & W $1/4$ line in Sec 27-36-6

Thence N on $1/8$ line to $1/8$ bet Sec 22 & 27

4148 ch $13387 + 4148 = 17535$ from

Starting Point at S W cor of Sec 35

Survey of Road has Town of Woodboro

This 3/8 Part on E + W 1/4 line in Sec 27. is in

a swamp

500 leave swamp

3575 creek 15 links wide Run SE

4148 to 1/8 Part Bet Bet 22 + 27

17535 + 116 = 17651 ch

Thence North on E 1/8 line in Sec 22

700 have crossed small trout creek

5 times 1/2 of this distance is Swamp

1800 fire has run on west edge of Swamp
for 1100 ch + then enters "

2100 leave Swamp

2250 enters "

2700 leave "

3000 enters "

3900 runs "

8062 to 1/8 Part Bet 22 + 15

8062 + 17535 = 25597

Thence North on East line in Sec 15

2002 to 1/16 Part thence E on 1/8 line

1991 " 1/8 " Bet SE 14 + 15

25599 + 1991 + 2002 = 29592

Survey of Road continued

Thence N on Sec line Bet 14 + 15

5994. to cor of Sec. 10-11-14 + 15

29592 + 5994 = 35586

Thence East on Sec line Bet Sec 11 + 14

1650 center e. m. + St. P. R.R. track

1802 East line of Right of way of R.R.

35586 + 1802 = 37388

Then N. 13° E along E side of R.R. right of way

2062 to 3/8 line in Sec 11

Thence E on 1/8 line to 1/8 Part on N + S 1/4

1700. Thence North 1/4 line

5866 to 1/4 Part Bet SE 2 + 11

37388 + 2862 + 1700 + 5866 = 47016

47016 chains = 5 miles + 7/8 + 16 links

May 15 1901

36-6 E cont. May 4th 1900BK Riv 8 N 36 1/2 W 36
do 8 S 62 E 26found distances bet corners to 21+22-27-28
and corner to 9-10-15-16 to be 16044Proportioned distance and moved Temp
corner south 15 miles Making distance
bet corners 8022 EachSet 1/4 Post bet 15+16 Equidistant Between
corners. N Riv Stump 30 ft high 20 N 23 241
do do 50 do 20 S 81 201

There is a green N Riv which stands N 37° and

about 8000 ch distant has been hit by lightning

Set 1/4 Post bet 15+22 Equidistant Between
corners. N Riv Stump 8 1/2 W 10 ft
nothing else to make bearing

Set 1/8 Post Between this 1/4 Post +

SE corner of SEC 15. BK Riv 10 45 1/2 E 92

do do 10 46 W 71

Picked up my N+S Random on E 1/8 line
in SEC 22 + Run North. at8064 well 1.0 ch. E of 1/8 Post. connected this
line South 8064 to 1/8 Post for town Road

36-6-E cont - May 4 - 1901

SEC for correction 1.34/100 Var 4.17 E

I then Run North on SEC line bet 14+15

Var 3.35 E
no Post could not find 1/4 Post8000 could not find corner everything buried
up continued N same Var same

4500 offset E 1.60 ch

5785 intersect Left Bank Tomahawk River

6400 on river

4985 fell 49 E of corner to 2-3-10-11

which I identified by Three Riv Stamp

with orig bearings - remarked there

160-49-111 which is my departure

went South + set Temp 1/4 Post corner

by Proportional distance and on true
line between cor to 14-15-22+23+1-2-10-11

I then went to corner of 11-12+3+14. which

I identified by an old BT (blown down)

Made new bearings BK Riv 10 N 80 E 22
do 11 S 19 E 78

Run West Var 3.30 S over

36-6-E cont Sunday May 5-1901

8269 fell 239 S of Temp corner which

⊙ I had set a true line N+S between corner + Proportional distance having moved it South $7\frac{1}{2}$ links and E. $55\frac{1}{2}$ ch

⊙ Run West on same Var. $3^{\circ}30'$ from Temp corner

Started West from this Temp corner

⊙ Var $3^{\circ}8'$

3924 fell 100 North of $\frac{1}{4}$ Post on g BT bath as down + nearly burned up. Set new Post + made new bearings

⊙ N Pin 13 S 86 W 29 ✓

I found distance from corner to 11-12-13-14 to this $\frac{1}{4}$ Post Bet 10+15 to be 123 ch longer than distance given in goat Field notes

Proportioned distance + moved Temp corner East 127 ch. Making the distance of Sec line between Sec 11+14 8142 - goat chaining is 8060 ⊙

SEC 15-36-6 cont May 8-1901

Set $\frac{1}{4}$ Post Bet 10+11 3996 $\frac{1}{2}$ N. of corner on true line Bet SEC corner

No Timbers to make bearings Put in pump Point 3 feet long

I also Put a Piece of Rail Road Rail 4 feet long for corner to SEC 10-11-14-15

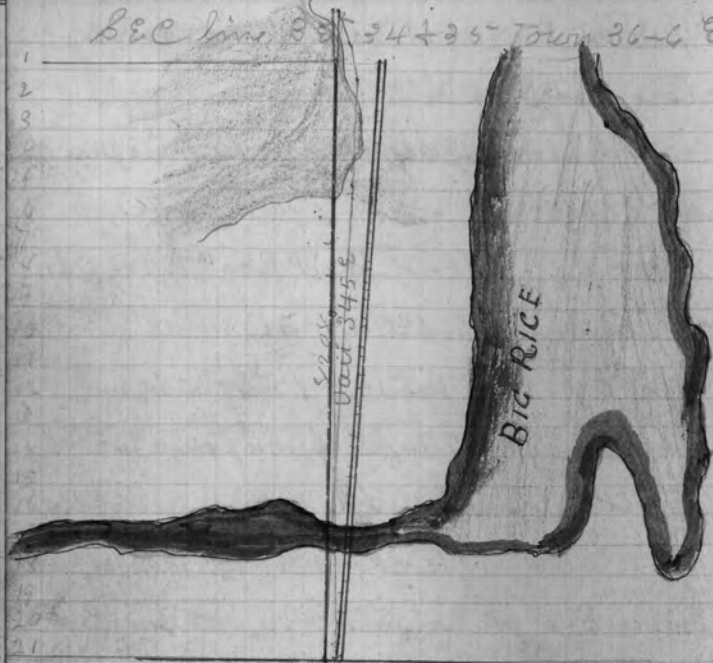
Set $\frac{1}{4}$ Post Bet 14+15 Equidistant between corners 3996 $\frac{1}{2}$ distant from each. as there was no timbers I used a gum barrel Post + Placed a Rock 50 links W and one 50 links E of it as this line is to be used for a road

I also Set $\frac{1}{4}$ Post between Sec 11+14 at Equal distance from corner (4071 ch) no timbers + ⊙ See page 37

I then went to N $\frac{1}{4}$ P of ^{Point Post} SEC 15 and run South Var $2^{\circ}30'8''$

7869 fell 90 W of $\frac{1}{4}$ Post ⊙ over

S&E line 34 + 35 Town 36-C E



Sec 15-36-6-E Cont map 4-1901

I then went to N 1/4 + Run E Var 330° E

7982 feet 24.00 N of 1/4 Post

went to west land & established center of S&E

BK Riv 7 N 35 1/4 E 198

NO OTHERS near

Distance to N 1/4 Post 3864

" " S 1/4 " 4005

" " E 1/4 " 3984

" " W 1/4 " 3998

200 1/2 South of center center set 1/8 Post

N Pin Stub 18 N 67 W 52

Sp. so lead 9 S 28 70

1992 E of center set 1/8 Post in WET Marsh

N Pin 16 S 22 E 116

No trees or stumps for bearings

I then commenced at S 1/8 Post on N 1/4

1/4 line + Run E Var 330° E

3983 1/2 feet 61 1/2 South of where I set

S 1/8 Post on E Sec line

S 1/8 Post but BK Pin 8 S 22 E 63

14 + 15 Sp. 10 S 40 1/2 W 109

conceded this line west 1991 + 3/4 ch

for Town Road

Copied on Page 27

County Record

May 9 - 1901 Sec 15-36-6 E cont

I then commenced at $E \frac{1}{8}$ Past on sec

line B & T 15 \pm 22 \pm Run N Var $3^{\circ} E$

4003 full 53 West of $\frac{1}{8}$ Past in wet marsh

I went S on this line to set $\frac{1}{16}$ Past
No timbers for bearings

connected line South to $\frac{1}{8}$ Past for town Road

Sec 11-36-6 E

commenced at S $E \frac{1}{4}$ Run N Var $3 \frac{1}{2}^{\circ} E$

8042 full 128 E of Sec corner set new

Post from the two $\frac{1}{4}$ line bearings

the west one is a stump the other a stub

the Blk Pins are both dead + gone

see for connection 162 Var $4^{\circ} 24' E$

I then run west from this corner

Var $7^{\circ} E$

4500 c.M. + St Paul R R Track

3790 Left Bank of Tomahaw River

and $52 \frac{1}{2}$ links South of Meander

set new Post from N B T the other is gone

found distance to be 90 links long between

corner + Meander - Proportions + Run

Sec 15-36-6 - cont May 10 - 1901

and set $\frac{1}{4}$ Past Proportional distances

Bot corner + Meander N.P. stump 20 N $84^{\circ} W - 14$

Blk Pin 8 N $55^{\circ} W - 99$

Run South from this $\frac{1}{4}$ Past Var $4^{\circ} E$

7979 full 41 W of $\frac{1}{4}$ Past which I set

equidistant between corners - No Timbers

for bearings Made oak Post + placed

Rock around it. connected line N

to $\frac{1}{4}$ Past. =

I then set $\frac{1}{4}$ Past on E line this Sec

N Pin 109 $37 \frac{3}{4} E - 38$

I then run west from this corner

Var $3^{\circ} 15' E$

8150 full 132 S of $\frac{1}{4}$ Past No bearing

Or a Smith is to put a pump

Point in far Past.

connected line E to center + set

$\frac{1}{4}$ Past for center of Section

as there was no timbers for bearings

I set stake 50 links E + 50 links W.

See 11-36-6 cont May 10-1901

for bearings + Set Smith is to Put
Iron pin for 1/4 East

connected 1/4 line N to 1/4 Post for
Town Road

Distance N 1/4 Post 39 58

" S " " 40 21
" E " " 40 95
" W " " 40 55

at 1979 N of center Set 1/8 Post No timbers
for Bearings plus Buslett. Run to
Put an iron Stake in for Post

at 20 1/2 S of center Set 1/8 Post

No Timbers for bearings Set Post
50 links E + W from 1/8 P. W. Partridge
is to Put an Iron Pin for Post

& Then Run West from this 1/8 Post

Var. 2 1/2' E

1850 R.R track

40 23 feet 4 link N of 1/8 Post No timbers for

Bearings Post 2 1/2 + 2 1/2 oak (Sawed)

connected E to 1/8 Post

See 15-36-6 cont May 11

I then went to E 1/4 Post, and ^{Run} N on sec
line + Set 1/8 Post

WP. stub 30 S 40 W 72 1/2
do 35 S 13 E 83

Went South on sec line + Set 1/8 Post
South of 1/4 Post

BK line 5 N 50 1/2 E 7
do 5 S 42 1/2 E 8

I then went to 1/4 Post in center of sec
and measured off an acre of ground
in SW cor of the S W N E. 250 chains

N + S + 400 E + W at Right angles with
N + S 1/4 line

I then went to SW cor of ~~sec~~ sec

(15) + Measured off an acre in SW of
SW. 250 ch. N + S + 400 E + W

at Right angles with E + W sec line

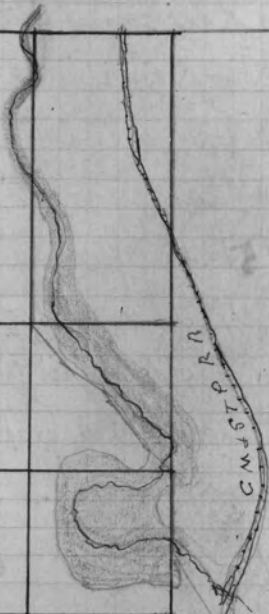
I then connected E 1/8 line in 22.8064 to South
line of 22

finished May 11 1901

⊕

36-6-E

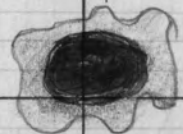
27



See 27 - 36-6 or as much as I know about it

36-6-E

15



C.M. ST. P. R. V.

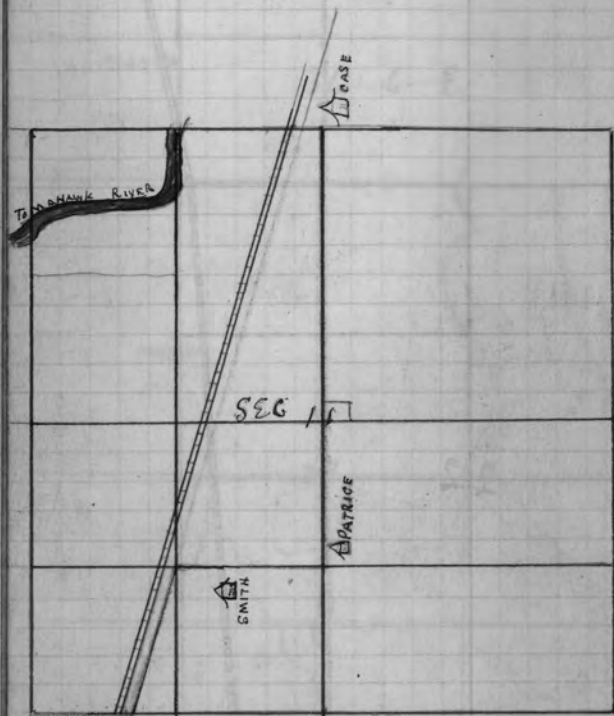
A
SOMERSON

CASB/AN

22



36-6-E



See Line Bet 27+28-38-10-E

commencing at 1/4 Part 9 am
north Var 3°30' East

4017 full 40 links West of corner
Went South on Random and at 1426 chain

South of corner Set Post on North Side of Road
Spur 7 N 34 W 17
do 6 N 78 81
at 1480 chains South of corner Set Post

Tammassee 6 S 14 W 21 1/2
Spur 4 S 62 E 26 1/2

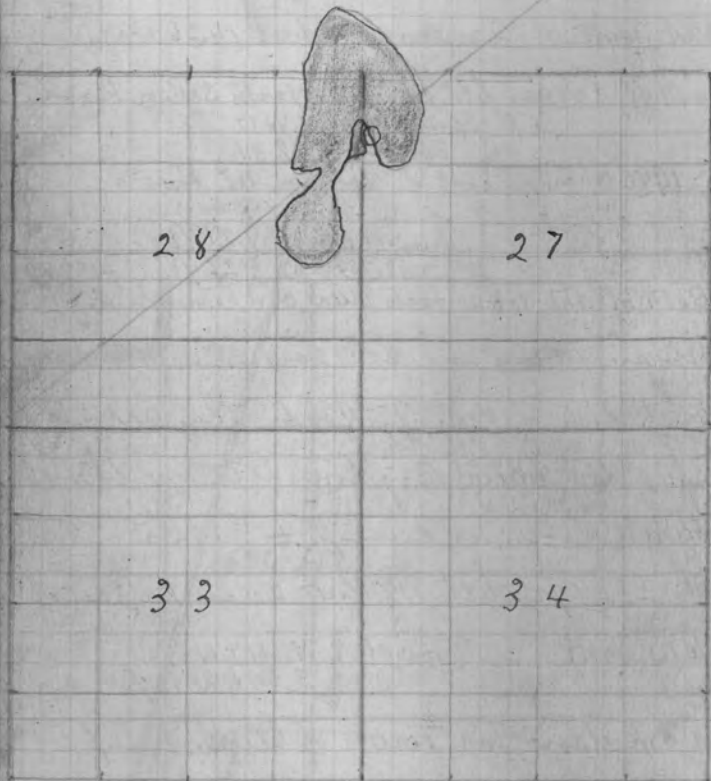
Both of the above posts were on true line
between 1/4 Part and See corner, and end on
each side of county road. They are set
to fix the boundary line between the
towns of Sugar camp + Gagen

at 2008 1/2 Set 1/8 Part 20 links East of
Random
Bieh 7 N 47 W 6 1/2
do 7 S 46 W 15 1/2

work done for Town of Sugar camp
Folsom Measured the corridor SW of See
line Bet 27+28 + found it to be 12.25 ch
also Measured Right of way out out but not
cleared + found it to be 31 chains
June 5+6
1901

Recd

38-10-E



Survey of Road for Pelican Pond 8-1901

Commencing at a stake which stands 16.00 N 69°25' E
from SW cor of Sec 11-36-9 E. And 92 ch
S of center of RR track (pin Stump 15 N 50 1/2 E 119

Thence S 56 W

- " " 26 "
- " " 58 1/2 "
- " " 43 1/2 "
- " " 67 "
- " " 73 "
- " " N 89 1/2 "
- " " S 81 1/2 "
- " " 46 1/2 "
- " " 72 1/4 "
- " " 64 "
- " " 89 1/2 "
- " " 62 1/2 "

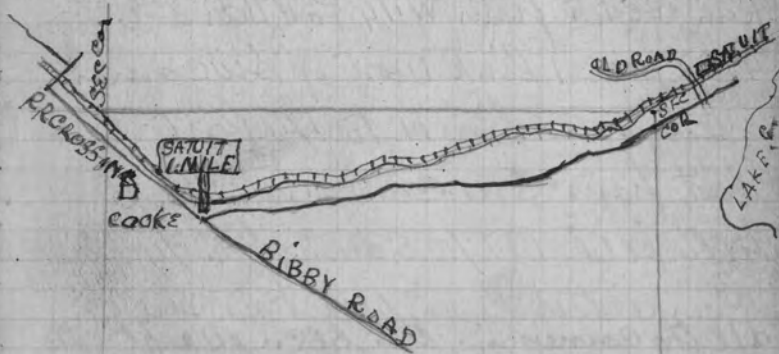
crossed Sec. line
bet 14 & 15 - 2.10 ch
S. of Sec corner

This corner was set
by manual from orig. pt
of corner on main plan
for best

Posted on	County Record
	1182
	747
	642
	485
	862
	442
Page 198	512
	1099
	204
	1802
	137
	1095
	261
	8475

Total
+ set stake in center of the Bibby Road

W.P. Stump 15 N 42 E 66
Mile Board marked SATUIT ONE MILE N 7 1/2 E 243



SEC. 20-36-9.E. June 17, 1901

To get the line from center to south
1/4 Post. I set instrument on a hill
about 700ch South of center and placed
flag at center + South 1/4 Post and
lined instrument into line and
set stakes to build fence

I then run west from center var $3^{\circ}E$ at
4134 1/2 feet 34 1/2 N of West 1/4 Post corners
copied on page 201

Read 10-10' E

county

Record

connected line East and at

2067 1/4 set 1/8 Post Birch 7 N 54 1/2 E 18
upon 6 S 46 W 8 1/2

Run South from W 1/4 Post var $3^{\circ}E$

4057 feet 1 link west of SW corner

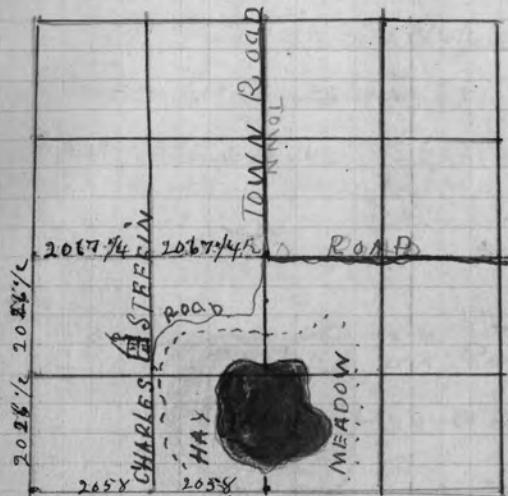
connected line N to 1/4 Post

East from SW cor. var $10^{\circ}E$

4116 feet 197 1/2 South of S. 1/4 Post

connected line west to SW cor
all the corners in this SEC. except the
SE corner were set by Don
June 13-1901

SEC 20-36-9-E



□

Survey of The Plinkind & Thore
Lakes Road June 19-1901

commencing at the corner of Sections

2-3-10+11. In Town 37-N-R9E

Thence East on Section Between 2+11

Chain
22.00

± Set Post N.R. Stump 16 S 43 E 32 1/2
Marked W 50 24 N 12 E 46
R.A.B.T.

Thence N 75° E

7.15

" " 56 1/4° E

11.10

and Intersect Same Section

395.00

at 1/4 Post

Posted on Page 210

Thence N 79° E

County Record

6.10

" " 63 " "

112.5

" S 86 " "

5.15

" " 72 " "

12.07

" N 80 3/4 " "

5.17

80.59

and Intersect Sec line Bet 1+2

Chain. No. of Sec. corners

and Set Post Spine Stump 14 N 14 E 6
Marked R.B.B.T.

This distance has been paid for
OVER

□

Rhineclanden & Three Lakes Road cont.

Posted on	Page	Thence	North	East	County	Record
395			80 3/4	° E		60
"			58 1/2	" E		7.54
"	210		61 3/4	" E		14.42
"			58	" E		58.25
"			42	" E		7.63
"			32	" E		7.93
"			61	" E		48.2
						104.84

Intersect Range line Bet. Ranges

9 + 10. Town 37. 11.50 chains North

d 1/4 Post. + Set Post } WP Stamp 20 N 148 27 1/2
 Marked R.C. B.T. } do 162 80 1/2 250 1/2

Thence	North	East	County	Record
	78	° E		11.97
"	58 1/2	" E		13.76
"	65	" E		16.95
"	47	" E		7.78
"	68	" E		7.29
"	35	" E		6.10
				58.65

Intersect Town Line Bet. Towns

37 + 38 Range 10 E. 14.6 chains E of 1/4 Post

Copied on Page 324

Bet. Sec. 6 + 31 + Set Post

Marked } WP Stamp N 44 E 23
 R.D. B.T. } N.P. do 184 57 E 30

county record
 Brod forward 104.84
 163.49

Rhineclanden & Three Lakes Road cont.

Thence	North	East	County	Record
	42 1/2	° E		35.0
"	30 1/2	" E		60.5
"	59	" E		7.95
"	79 1/4	" E		17.50
"	54 1/2	" E		5.80

Posted on Page 395 40.80
 Intersect Line Between Sec 31 + 32

Town 38 N R 10 - E. 15.88 chains South

d 1/4 Post + Set Post

Marked } WP Stamp 20 S 35 E 17
 R.E. B.T. } do 15 N 76 W 38

Thence	North	East	County	Record
				163.49
				204.29
				2.87
				8.61
				10.86
				12.76
				5.50
				7.69
				12.20
				11.00
				6.33
				11.58
				7.90
				9.680

Intersect line Between Sections

32 + 33 - 10.21 chains South of Sec

county record

Marked } WP Stamp 12 S 48 1/2 E 27
 R.D. B.T. } do 10 N 70 W 47

Brod forward 104.29
 301.09

Rhineclands + Three Lakes Road cont.

Still North 48 ° E 1620

Caped on Pass 395
Intersect Sec line Bet Sec 28 + 33

1100 chains East of corner + set Post

marked
R.O.B.T. Fin 109 73 W 37
Sugar 8 S 68 E 26

Brat forward 30109

31729

Still North	48 ° E	240
There	"	315
"	41 1/2 "	576
"	21 = " "	600
"	34 1/2 " "	342
"	45 1/2 " "	862
"	3 1/2 " "	872
"	41 1/2 " "	1173
"	56 1/2 "	1290
"	53 " "	370
"	32 " "	1380
"	52 " "	1195
"	52 3/4 " "	1286
"	89 1/2 " "	421
"	54 " "	10942

Intersect Sec line Bet 27 + 28

1416 chains South of corner at a point

where the Rhineclands + Three Lakes Road crosses

Said line as indicated by Post and bearings

to W.T. on South side of Road from 6 S 14 W 21 1/2

Spine 48 62 E 26 1/2

county road

Rhineclands + Three Lakes Road cont June 21-1901

on North Side of Road Spine 7 N 34 W 17
20 6 N 7 E 31

Distance in Sec 28

10942

Brat forward

31729

Caped on Pass

42671

395

SEC 1-37-9 10484
" 6 37-10 5865
" 31 38-10 4080
" 32 " - " 9680
" 33 " - " 1620
" 28 " - " 10942

42671 chains

Making 5 Miles + 107 Rods

finished Survey June 22-1901

Resurvey of Rhineclands + 3 Lakes Road in

Town of Pagers June 26-1901

Commencing at 1/4 Post Bet: 22 + 23-38-10 E

Thence North	32 ° E	chains
"	"	784
"	76 1/2 " "	512
"	51 1/2 " "	811
"	85 " "	610
"	53 1/2 " "	258
"	26 1/2 " "	525

Intersect old Three Lakes Road 85 ° 0'

+ set Post

{ Run 9 N 62 W 15 1/2
Sugar 9 S 1 E 34

county road

Sec. 23 - 35-11 E. July 9 - 1901

Went to N 1/4 Post + set same from
copied on Pass 355

Both org. B.T. They are down and
nearly defaced, found bottom of old
Post - Made new bearings

Tamarac 10 N 51 E 34
DO 8 S 62 1/2 W 39

Run East from this Post Var 3 1/2 E

4136 feet 3 1/2 chain N of corner
which I set from E org B.T. It is
down and nearly gone. Make new

Bearings { Spence 14 N 82 1/2 E 27
DO 10 N 5 W 30

Corrected line west Var 50' W - Sec 27 1/2 E

2068 feet 1/8 Post (Murray) 10 N 27 1/2 W 59

I commenced again at mouth
1/4 Post and Run South Var 3 0 E

7054 feet 186 W of 1/4 P. 2 org B.T

West from East 1/4 Post Var 00

8168 feet 86 South of 1/4 P. 1 org B.T

county record

Sec 23 - 35 - 11 E. Cont July 10 - 01

copied on Pass 355

Corrected Var of N + 1/4 line 420 E
" " E + 1/4 " 37 W

South from NE corner Var 4 0 E

4075 feet 44 link West of 1/4 P. org B.T

went N + set 1/8 Post Var of correct line 323

W Pine 9 N 6 W 27 1/2

Spence 9 S 67 1/2 W 37 1/4

went to center + set Post at intersection
of corrected 1/4 lines

Spence 12 S 65 W 28

Tamarac 7 N 79 1/2 E 35 3/4

Distance N 1/4 Post 4073 1/2

" to S 1/4 " 3880 1/2

" " E 1/4 " 4037 1/2

" " W 4130 1/2 2065

2036 3/4 N of center set 1/8 Post

W Pine 10 S 36 1/2 E 26

B DO 8 S 57 W 90 1/2

2018 3/4 E of center set 1/8 Post

Tamarac 9 N 32 1/2 W 120

DO 12 S 22 W 94

Run East from N 1/8 Post an N + 3/4 line Var 45' W

4073 feet 37 N of 1/8 Post

Corrected this line at center of NE 1/4
county record

Sec 23-35-1 E July 11-1901

Run N from E $\frac{1}{8}$ Post on E $\frac{1}{4}$ line
 by lining instrument between $\frac{1}{8}$
 Posts & set $\frac{1}{16}$ Post
 copied on Page 355

Then set $\frac{1}{8}$ Post 1940 South of center

Tam 7 N 46 W 9 $\frac{1}{2}$
 50 6 S 13 E 4 $\frac{1}{2}$

and Run East to $\frac{1}{8}$ line and set

Temporary corner

20.65 West of center set $\frac{1}{8}$ Post

counter read
 Tamarac stub 12.9 21 $\frac{1}{2}$ & 25 $\frac{1}{2}$

Survey of Road for Town of Schoeck

July 12-1901

copied on Page 355

Commencing at E $\frac{1}{8}$ Post on Sec.

line of Section 14 & 23 in Town 35-11-E

Thence South 99.3 to Plebeian Lake and
 Brandon Road

Commencing again at same $\frac{1}{8}$ Post

Thence N Var 3.35 E 20 chains

Commencing again at a

Point on the East $\frac{1}{4}$ line in Sec 23

35-11-E 500 chains South of E $\frac{1}{8}$ Post

on E $\frac{1}{4}$ line. Thence South on $\frac{1}{8}$

line 39.14 to a Stake supposed to be

the $\frac{1}{16}$ Post in center of SE $\frac{1}{4}$ of

said Section

counter read

15.40
 32.50

Sec 31-35-11-E July 15-1901

Went to N. 1/4 Post which I identified
 copied on Page 357
 + located from the Linden B.T. which had
 been dug up to find its location & took the
 evidence of John Rice and applicant both
 of Pratt Junction. Set a small Post a little
 north of Wagon track - I then run South
 Van 15' Center. This course is the one which
 Mr. Rice & Dason - said would about
 hit the South 1/4 Post

22.86	I offset west	1.00 ch
7119	" "	8.27
8134	1/2 ⁵⁴ East of 1/4 Post	54
	making my total departure	9.81 ch

Correct Van is 5.40 West
 see for correction 012.06

I corrected this South 2000 ch from
 the N 1/4 P for Road purposes for the
 Town of Chaopik

July 15-1901
 county record

Sec 34-29-72-E July 1901

Run East from west 1/4 Post Van 3,308
 3908 2 1/2 links N of center set by D HV
 went west + set 1/8 Post at 19.54
 Chain and connected line west to 1/4 P
 Red oak 8 N 80 E 41
 copied on Page 111 county record
 I then run South an an interme-
 -diat course between west Sec
 line + the N + South 1/4 line
 until I intersected the E + N 1/8
 line in S 20 1/4

S&C 25-38-7 August 26 1901

North from SW corner one orig. B.T. ^{copy on Page 365}

4003 full 29.8 of 1/4 Post could not
find orig. B.T. but found Post marked
1/4 S. to a tree with bearings on

Made by B.E. Jon

W. Pine 12 N 24 1/2 E 43
Maple 10 N 30 W 53

went S and set 200 1/2 set 1/6 Post

Dead Tamarac 10 S 93 1/2 W 39

Dead Tamarac 10 N 84 E 33

I run E from this 1/6 Post on
^{copy on Page 99. correct record}
3 1/2 E 20 chains then N 15 chains

to creek - did not put in any
Post as I was only summing
at Random

finished at 10 A.M. Aug 27

S&C 28-36 11 E. Sept 2 1901

East from South 1/4 Post Var 3.30 E
^{copy on Page 365}
This Post & identified by both original B.T.

4014 fell 2.23 chains North of corner
This corner & identified by the SW
B.T. which down and nearly
all gone, just barely enough left
to identify it. Some men who

were with me showed me a
S&C corner set by M.E. Mansell
22 Rods east of the true corner
Both of this B.T. were south of
corner and both marked S.34.B?
I think he may have set this cor
by proportional measurement
as I saw a Random about 30 Rods South
of true corner running E & W

I made 1 new bearing for true cor
^{correct record}
Sugar 12 N 58 E 57
went west and set 1/8 Post at 20.07 ch

Hemlock 12 N 22 1/2 E 15
Sueh 10 S 38 W 8

SEC 28-36-11-E cont: Sept 3, 1901

North from E. 1/8 P. on S. Sec line var $33^{\circ}E$
 4044 feet 22 links E of 1/8 Past
 Set by ^{corned on Perry 365} some who surveyed
 Road East from Manico, and
 as Burns of Centright & Russner
 were willing to accept it I used
 it. finished ^{county records} Sept 3, 1901

SEC 28-40-8. Sept 5-1901

found meander on N side of Lake
 content near Baer's Cottages, also
 on N + S side of North Bay in lake
 content followed line to Lake
 St Germain, but could not find
 Meander, but did find Meander
 on Sec line bet 21 & 28 where it
 intersects St J Lake. Both B.T. were
 there but down. South one had
 moved East or else govt notes
 are wrong as to distance. Made
 new B.T. 1 W Pin 15372 1/2 E 118 X
 run East Var $3^{\circ}E$
 3925 feet 44 South of 1/4 Past which
 I identified by one orig BT all gone
 but Stump. Some one had placed
 a Post by it and marks it BT
 connected line west to
 1967 1/4 & set 1/8 Past | WPins 11 S 11 E 23 1/2
 Bush 8 N 57 W 22 1/4

S&C 28-40-8 cont Sept 5-1900

Run N. from W 1/4 East on N&S&C line
 into S&C 21. Var 3.30,
 about 80.00 ch intersected St
 Germain Lake. W.P. Stump bears S 8
 18 S 10 W 39 1/2
 went East to N 1/4 Post of 28 and
 run South Var 3.30 E / Sept 5-
 Sept 6 continued line South
 at 8000 chains found E+W line but
 did not find 1/4 P. Set line stakes and
 went west + found S.W. corner which
 I identified by the N B.T. & W.P. Stump
 with Part of the bench mark on it.
 Made new bearings

cedar 6 in N 5 W 7 1/2 links
 W.P. Stump 16 N 54 1/2 E 41 "

I then run E from this corner Var 3 1/2 E
 4032 1/2 fell 4 links N of 1/4 Post. which
 I identified by both orig. B.T. They are
 both down but quite plain placed
 Post at stump of each and marked them. B.T.

S&C 28-40-8 cont Sept 6+7-1901

also made new B.T.

N.P. Stump 18 S 3 1/2 W 80 1/2 links
 DO 12 S 57 1/2 E 27 "

Went west + at 2016 1/4 set 1/8 Post

N.P. Stump 12 N 84 E 8 1/2 links
 DO 12 S 55 W 25 DO

corrected course of this line is 3.27
 corrected course for N&S&C " 337
 course of E+W 1/4 line " 332

I then continued N+S 1/4 line to
 8647 + fell 41 East of 1/4 Post

corrected this N. from center
 " Var 3 1/2 E 527 47/100

Sept-7-1901

Went to E 1/4 Post. Identified by
 both B.T. East on nearly gone made
 new one W.P. 6 S 86 1/2 W 35 3/4
 run west Var. 3.27 E which is an
 intermediate course between the N+S
 section line, 3860 intersected N+S 1/4 line
 met Post for center of S&C
 line. Run west on same course

See 28-40-8 cont

1991³/₄. (as it is 2016¹/₄ between SW
corner + S 1/4 + 1967¹/₄ between NW
corner + N 1/4 Post added together
= $3943.3/4 \div 2 = 1991.3/4$) + set 1/8 Post

W Pine 8 S 12 W 6
do 6 N 80 E 9 1/4

Ran South from this 1/8 Post Jan 3rd 8
3958 feet 7 3/4 W of 1/8 Post

Corrected this line N to 1/8 Post
went to where N + S + E + W 1/4 lines
crosses + set center

W Pine 14 N 1/4 W 11 3/4
do 10 S 48 1/2 W 54

found distance to N 1/4 Post to be 4289
" " " S " " " 3958

1979 South of center set 1/8 Post
near roots of an old windfall no B T
as timber is all dead and nearly
all down Ran west from this 1/8 P
an intermediate course between the
South Sec line + E + W 1/4 line

See 28-40-8 cont

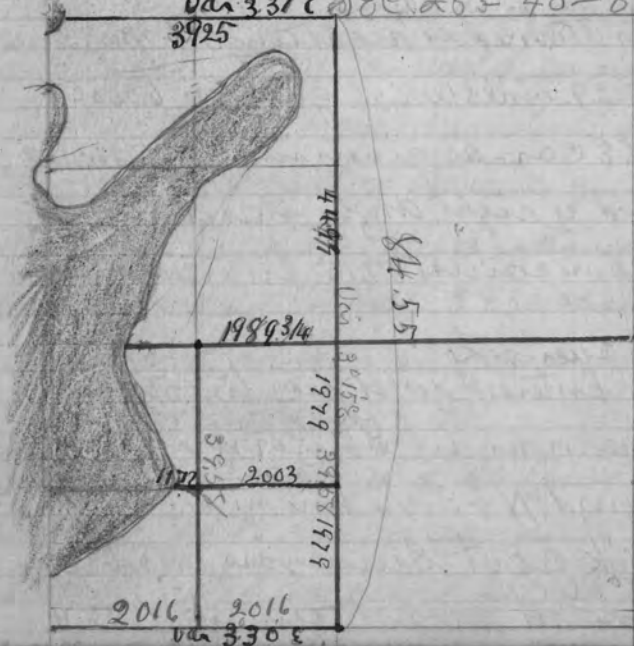
2003 intersected N + S 1/8 line +
set 1/8 Post Birch 14 N 49 1/2 E 24
do 6 N 48 1/2 W 18 1/2

Continued line West same course
3175 intersect Lake + set Meander

W Pine 7 S 49 1/2 W 6 3/4
N do 7 E 20 W 39 3/4

finished see 28-40-8 Sunday
Sept 8th 1901 work done for a

Mrs Backus Sec 28-40-8
var 337 E Sec 28-40-8



SEC 29-40-8 Sept 9-1901

commenced at Meander⁸ & sec. line
5971. N of S.E. corner. took the course
of S.E. line South to the meander which
is 55.49 N of S.E. corner and north to
Meander on N side of Lake content
71.08. N of S.E. corner. + found it to be
3.30⁸ also found distance to be correct.

I then ran west-var 3.30⁸

³⁰
3030 over lake by use of Stadio wires
I then turned a right angle + measured
North 29 links which gave in 6000 ch
N of S.E. corner - as given in govt notes
turned a right angle + ran west
on same course 57.15 Entered St German
Lake.

7862 over lake

7942 Entered west sec line 56 links S
of meander on St. German Lake

I found N + S 1/4 line in sec 28 - 8455
+ think govt Surveyors made a
mistake in measurement of sec

govt notes

Sec 29 40-8 E Sept 9-10
line bet 28 + 29. Making it 455 long
which accounts for my being so far
north.

I then ran South on west sec line
from meander on Lake St German

Rained and I quit at 3.40 P.M.

Sept. 10-1901

2579 could not find 1/4 Post anything
burned over and no trees or logs left.

4462 over St German creek about 1.50 ch
6460 fell 15 1/2 links west of corner B.T.S.
found distance from meander to S.E.
corner 114 Short of distance given
in govt. F. Notes - I proportioned the
distance and set 1/4 Post 39.30 chains
N of S.W. corner on true line

E.N. Riv. 8933 E 71

This left a short stay of 44 links
between 1/4 P. on meander
Proportioned same and set 1/8 Post

74 SEC 29 40-7-8 Sept 10-1901

569 ch South of meander cor

Dead Birch 15 N 31 1/2 E 41 1/2
Red Oak 10 S 30 E 42 1/2

I then connected E + W 1/8 line on N 1/8
Post on W SEC line

7942 full 5.13 ch N. of 1/8 Post

Corner Var 12' W D&E .00646

Went to tally Hooch and moved it

29 links + South 256 1/2 + Oct 1/8 Post. 3921

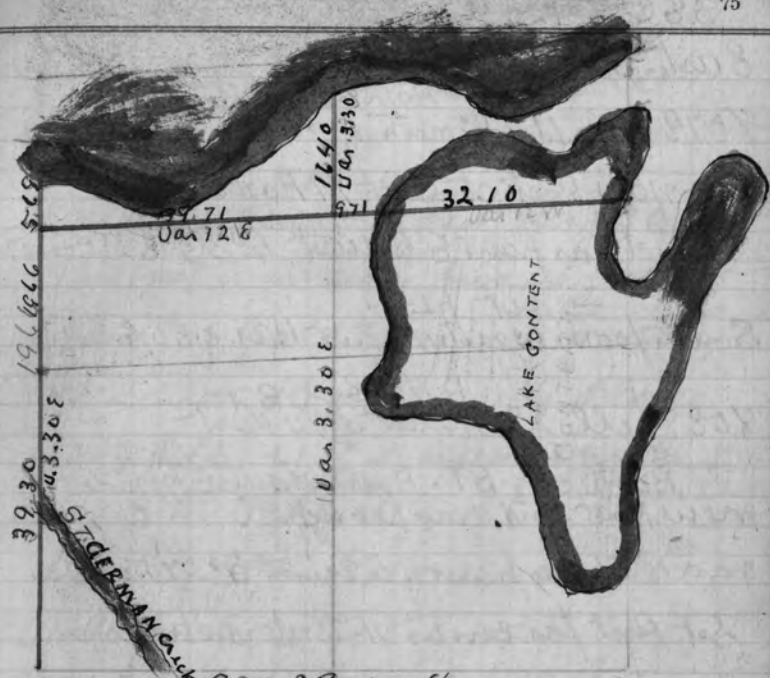
W Pine 8 S 62 1/2 E 183 3/4
do 10 S 16 W 125 1/2

connected line E to Lake + set Meander

W Pine 24 N 49 E 2
Red oak 8 S 27 W 29

Distance across Lake to E&E line to 1/8 P
in Lake is 3200 ch measured by stadia
wires I went N 1/8 Post on N + S 1/4 line
and run North Var 3.30 E which is
an intermediate course between E&E

lines
1645 intersected St Serman Lake at Meander
W Pine Stump 30 S 49 W 44 3/4 ^{This is all} done in 29



SEC 29-40-8
Finished Sept 10-1901

26
5
130
145

Sec 34-43-5E Oct 10-1901

East from West $\frac{1}{4}$ Post Var. $3^{\circ} 30' E$

Both org BT

8078 fell 167 South of $\frac{1}{4}$ Post org BT.Set new Post at Both $\frac{1}{4}$ Postsconnected Var from E to west $4^{\circ} 55' E$ Sec 00207

= Oct 12 =

South from North $\frac{1}{4}$ Post Var. $3.30 E$

Both org BT

8038 fell 228 West of $\frac{1}{4}$ Post

Both org BT. Both down made new Post and New bearing

connected Var from N to South $5^{\circ} 07' S$ Sec 00208

Set Post for center at Intersections of

connected $\frac{1}{4}$ lines
Tain 12 N $41^{\circ} 28' E$ 15
cedar 7 S $5^{\circ} 8' 19'$ Distance to N $\frac{1}{4}$ Post 3995 $\frac{1}{2}$ " S " " 4042 $\frac{1}{2}$ " E " " 4049 $\frac{1}{2}$ " W " " 4029 $\frac{1}{2}$ connected $\frac{1}{4}$ lines East + South to $\frac{1}{8}$ Post2021 South of center set $\frac{1}{8}$ PostW Birch 7 N $40^{\circ} W$ 9W Birch 7 S $51^{\circ} W$ $16\frac{1}{2}$

I was requested by Harrigan not to mark B.T. so I made a X with

Sec 34-42-5 East Oct 12-1901

scribing from on side of the B trees opposite of Post.

= Oct 13 1901 =

East from South $\frac{1}{4}$ Post Var $8^{\circ} 00' E$

This Post is in cedar Swamp just East of logging Road timber is nearly all down it is a horrible place

4003 fell 61 S of center all of org BT. The NW + SE ones are nearly gone set new Post + marked s.e 2-3. 34-35
went west and set $\frac{1}{8}$ PostW Birch 12 N $76^{\circ} E$ 20
cedar 7 S $55^{\circ} W$ 45connected Var of this line going East is $3^{\circ} 52' E$

Oct 13-1901

went East from center and set $\frac{1}{8}$ Post
2029 $\frac{1}{8}$ Post of center + same distance west of E $\frac{1}{4}$ PostSouth from this $\frac{1}{8}$ Post Var $4\frac{1}{2} E$

over

SEC 34-43-5E cont Oct 13..1901

full of $\frac{1}{8}$ Post
corrected this N from center of SE $\frac{1}{4}$



SEC 34-43-5E
Surveyed for Hangan Oct 1801

SEC 33-43-5-E Oct 11

West from E $\frac{1}{4}$ Post Var 5° E7864 full 298 South of $\frac{1}{4}$ Post 2.09g BT

The Birch is 29 links instead of 19
& run on this course & a line had been
run & timber cut by it on same course

Corrected Var going west 250° E

DEC 00380

South from N $\frac{1}{4}$ Post orig BT

Set new Post Var 40° E

7979 full 33 East of $\frac{1}{4}$ Post orig BT

Corrected Var 3.45 DEC 00041

Went north & set center

Stam 12 N 68 $\frac{1}{2}$ W 13
Span 4 7 N 28 $\frac{1}{2}$ E 12 $\frac{3}{4}$

Distance to E $\frac{1}{4}$ Post 3972

" " W " " 3892

" " N " " 3941

" " S " " 4038

Corrected N 45 $\frac{1}{4}$ north and1970 N of center set $\frac{1}{8}$ Post

Nemlock 9 N 15 $\frac{1}{2}$ W 17
Dd 11 N 66 E 25 $\frac{1}{2}$

I could not find $\frac{1}{4}$ Post between 13+24
 on The NW corner of 24 Swear of 13-20 &
 went to Thunder Lake and located the meander
 Post on sec line between 14+23 on East
 side of lake and run East Var oo
 at 30.34 ch. I looked carefully for corner
 but could not find it

3600 ch entered Tam. Swamp

6300 " over copied on Page 346

7000 " could not find $\frac{1}{4}$ Post

8800 intersect Tam. & enter Swamp

12794 " fell 234 South of corner 409 BT
 correct Var going East ~~127~~ 105
 D&C for correction oo 203 18"

Went West & at 2317 West of corner set
 Temporary $\frac{1}{8}$ Post

4642 West of corner set Temporary $\frac{1}{4}$ Post

6951 " " " " " $\frac{1}{8}$ Post

9283 " " " " " corner

These Posts were all set on corrected
 line between meander on lake & the
 corner to 13-24-18-19 and distances
 determined by proportional measure-
 ment between said meander & corner

I then began at Temporary corner to
 23-24-13+14 and run South Var 330 E
 8158 feet 12.86 ch West of corner.

The correct distance on true line
 would be 7958 county road

I then run north from same Temp.
 corner, but at 6000 ch. I could see north
 through open swamp a mile or more,
 and as goat notes called for yellow
 pine for corner. I quit, and with
 Alf Cobban I looked the country over
 carefully and am satisfied the goat

copied on Page 341

Surveyors did not run any lines, as
 set only corners East of Thunder Lake and
 north to town line & then run some
 Temporary lines and quit as I hear
 to go to 38.11. E. and will have to
 finish this some other time. Will
 have to run from temp corner to
 corresponding on town line finished
 Oct 28 1901 county road

To ascertain the amt. of flowage on
 Lot 5. I commenced at S.W. cor. and
 measured East by use of Stadio rail
 Dist. to Lake 50 links

" " " 1825

" from Lake to Point on Sec line 400 ch.
 & commenced at This Point (2450 ch) East
 of S.W. corner and ran north at right
 angles with Sec line 400 ch
 Distance to Lake on Sec line 400 ch
 I found distance north from Sec line to
 River 400 ch distance across River 250 ch
 at 700 ch north of Sec line I placed line
 stakes every chain

Then Gust Kloes & his two sons
 applied an Emiel and Jo Friemuth
 after being duly placed under oath
 fixed the high water mark near Boat house
 on said lot 5. They also stated this was
 the high water mark prior to Oct 1899

They also fixed the point of high
 water since Oct 1899.

I examined each point so fixed by them
 and found sufficient evidence to
 lead me to believe they were right
 The old flowage was discernible by
 there being no vegetation of any kind
 on the ground covered by old flowage
 while there was some on the lands
 more recently overflowed

Also the Posts on which the Boat house
 rests show distinctly the marks of the
 high water which is much older than
 the high water mark of more recent date
 which show very plain on the east sides
 of the building (Boat house) 14x18
 also filing at bridge shows same mark

I then placed Mr Fred Peikard under
 oath as Rodman and proceeded to
 take levels of first of the old flowage
 which I found to be 2 $\frac{1}{2}$ feet above
 Lake. With the assistance of Parties
 heretofore mentioned I became satisfied
 the Lake is 2 feet above its original
 normal height.

After fixing the line of the
 old flowage by setting stakes in same
 I proceeded to take the levels of the new
 flowage which I found ~~was~~ of
 a foot higher than old flowage.
 The line of same was designated
 in same manner as old flowage
 only stakes were marked so as to
 distinguish the old from the new
 flowage

I then commenced at a point
 on Base line 700 ch. north of Sec line and
 turned at a right angle to the west
 225 ch intersect old flowage
 425 " " Lake

When this line intersects the Lake on line
 I measured north 40 ch to line of O.F.
 " " South 25 " " Lake on line

At 700 ch north of Sec line I ran west
 at right angles with base line. This
 Point (800 ch) is in new flowage
 which extends east 175 ch
 525 ch to Lake intersect Lake
 about 1/4 of this distance and about
 70 ch wide was not all covered by
 new flowage. The west 25 ch was
 old flowage

High water mark fixed is 3340 above Lake

at 900ch north of See line I run
west at right angles with base line
This Point (900ch) is on the N line of
new flowage 14 tunds, 17ch East
~~350ch leave new flowage~~
~~400 " intersect " "~~
 550 " " old " "
 590 " " " Lake

at 1000ch north of See line
I proceeded in same manner
~~#2^{ch} intersect new flowage~~
~~250 " leave " "~~
~~350 " intersect " "~~
 475 " " old " "
 560 " " " Lake

at 1100ch north of See line proceed
same as before
~~37 links intersect new flowage~~
~~175ch leave " "~~
~~275 " intersect " "~~
 375 " " old " "
 475 " " " Lake

at 1200ch north of See line proceed
in same manner
~~18 links intersect new flowage~~
~~100ch leave " "~~
~~175 " intersect " "~~
 250 " " old " "
 410 " " " Lake

at 1300ch north of See line proceeded
as before 10 links east to
online of new flowage line
~~50ch W leave new flowage~~
~~100 " intersect " "~~
 175 " west " old " "
 335 " " " Lake

at 1400ch north of See line proceed the
in same manner 17 links East to
~~50 intersect new flowage~~
 135ch west old " "
 275ch " " Lake

at 1500ch north of See line. Same as before
new flowage extends 15ch east of this
Point
~~100ch intersect old flowage~~
 240 " " " Lake

at 1550ch north of See line intersect
SW corner of corner of old Kitchen
14+18 feet $\frac{3}{4}$ of this building is on
new flowage and nearly all east
of Base line & stands NE & SW

at 1600ch north of See line run west
at right angles with base line as before
new flowage extends 40ch east of this
Point (1600ch)
~~100ch intersect old flowage~~
 225 " " " Lake

at 1700ch north of See line ditto same as above
new flowage extends 15ch east of (1700ch)
~~125ch intersect old flowage~~
 202 " " Boat House - 14+18 - E+W
 262 " " " Lake

at 18 ch north of Range line run
west as before. T Point is on E line of
new flowage 150 ch. Intersect old flowage
306 " Lake

at 19 ch north of Sec line run west as
before
20 ch west Intersect new flowage

2115 " " " old "
285 " " " new "
345 " " " old "
372 " " " Lake "

20 ch north of Sec line run west
as before

60 ch Intersect new flowage
210 " " " old "
436 " " " Lake "

Highest Point of new flowage
above present stage in Lake at
Mud Kloes Place 3.340 feet

Went to Dam in Sec 5-39-11 E

and took levels and measurements

~~at~~ water below dam Rod read 9186

Difference in water above and below " $\frac{6746}{2440}$

Height of dam above the water and
and above the dam is 2799

There are 2 gates in Dam each
Measuring 9.9/10 feet
Height of gate proper is 3 feet
Distance from Bank to Bank 130 ft

There is a coffer Dam about
3 feet above the Dam which holds
back at present stage of water 7/10 ft
of water and extends across both
gates to pier on either side

There is an old dam about 1/4
of a mile above present Dam but is
now nearly gone - Distance between
Wings of this old dam is 43 feet
average depth of water between
Wings is 2.5/10 See page 90 at B

on my way from Kloes Place on
Big Lake to Dam I made notes of
the narrowest & shallowest place on
my return I took measurements of
same. at the outlet of Planting &
ground Lake in Sec 20-39-11 E
found distance across outlet at present
stage of water to be 2.30 ch = 152 feet
and the average depth of water to be
2 1/2 feet

at the outlet of the Laura Lakes
into Medicine Lake

Distance across outlet $235\text{ch} = 220$ feet
This narrows is in Sec 4-38-11-E
Average depth of water is $3\frac{3}{10}$ feet
at the Narrows just north of Bridge in
Sec 10-38-11 I found distance across at
narrowest point to be 140 feet and
average depth of water to be $3\frac{7}{10}$ feet

These points on the chain of lakes
from Big Lake to Dam are the
narrowest and most shoal of
any.

B. I neglected to say. The indications
at Dam show it has been repaired from
time to time. but more particular in the
last two or three years. It shows very
plain the dam has been raised, new gates
put in. & quite an amount of gravel put
on. judging by looks of coffer dam it
has not been in more than two years
and not less than one year.

The gates proper are three feet high
but there are other Plank there (and
one of them is now on the west gate)
which are 1 foot in width and same
length of gates and have been used
on top of the gate proper.

I found the east gate closed, but was
repaired by parties who were there fishing.
It had only been closed a few days.

In taking measurements across the
narrows place I could not discover but
a very little current. and the bottom
at these points was soft sand.

I also measured open water between
Piers at Bridge which is about 50 feet
South of Narrows Point in Sec 10-38-11
and found 115 feet of open water
The piers are built of logs and are so
constructed the water can flow
through them. the whole length
of Bridge is 150 feet when it covers
the water at present stage.

High water mark at Kloss Place
is 3.340 above Lake

There is indication on timber at Dam
which show a high water mark 2.506
above present stage - add to this $\frac{700}{}$
which is the fall over coffer dam = 3.206
Difference in water above & below Dam 2.440
5.646

There is a gravel bar about 10 Rods
below dam which reaches across the River
on which some driftwood is lodged
which holds back $\frac{6}{10}$ of a foot of water
and this to 5.646 = 6.256 feet

The indications that the water at the
Dam has been 6 in higher than mark
on timber indicates & should this be
added (which I think it should be) it
would make the high water mark at Dam
6.756 feet above level of River below
the Dam.

I took level of Dam & found it
about 6 in higher than any high water
indications

H. Water at Kloss 3.340 + 2 feet head in Lake = 5.340 ft
~~less~~ 6.756 ft Height of Dam less 5.340 = 1.416 ft
which is the fall from Kloss to Dam

On my return from Dam I had occasion to pass under Wagon Bridges on lot 5 - See 15-38-11-2 and I there found High water marks on the filling to bridge Took levels of Dam and found the compared exactly with the High water mark fixed by Just Kloos & others heretofore named

I then located the flowage in SE corner of lot 5 as shown in map

Nov 2-1901 I looked and made measurements of flowage on lots 1 & 2 in See 22 38-10-8 and found same to be as shown on map

I also looked over S E S E S E 16 same town & range as there was so much timber down & a portion of it so wet it was difficult to take levels and I run through this description with pocket compass & cut it up into 2 1/2 acre lots made a temporary map of same of which this map is a copy. This description is a very level piece of land. I do not think any point is 2 feet above High water mark. The soil is Mt. Rpt to no rock, and with the 4 sections of about 5 acres it could all be cultivated if Lake was down to its original normal stage

It is very difficult to determine the old from the new flowage but from what I could see I should think there was covered by the new flowage at least 10 acres which was not, covered by the old flowage

There has been quite a good many Hemlock trees went down this summer perhaps caused by water standing around them - there is a strip along South side containing about 7 acres on which the timber is all dead and nearly all down caused by old flowage

finished Saturday Nov 3-1901

I have forgotten to give location and S¹/₂ of buildings. before & after High water

SEC 10-39-7-E November 8-1901

Recommenced at NE corner. This corner stands in a very wet marsh. The org Post is standing. The NW BT is gone East one is there, also one which stand SE from Post, but is not mentioned in U.S. Field notes. I had a flag placed at Post by laying poles on ice making a foot bridge. I then set up on south of marsh and lined in instrument with vernier adjusted on $3^{\circ}30'8''$ var and took distance to Post with stadia wire 1.45 ch. 4 m south on this var 3849 feet .19 ch East of $1/4$ Post 2. org BT both stumps and nearly buried up.

Made new Bearings

all copied on Page 102 country record
 N. Pine Stump 14 N 16 W $6\frac{1}{2}$
 " " " 17 N 18 $\frac{1}{2}$ E 13

192 $1/2$ N of $1/4$ Post. Set $1/8$ Post

W Birch 10 S 11 $1/2$ W 27
 Sugar 7 N 77 E 19 $1/2$

SEE 10-39-7-E cont Nov 8-1901

I again commenced at NE cor
Took distance in same manner
Vernier adjusted on H & E van
distance from stake to measurement
270 ch. ^{captured on Page 102}

H048 fell 121 ch N of 1/4 Post 2-orig BT
South one is standing but dead
north " " Buried Blazon Stump 8 in
High with BT on it to late to make
new Bearings to night

= November 8 - 1901 =

New Bearings for N 1/4 Post

W Pine 18 N 31 1/4 E 22
^{county record}
no green timber on S side of line

2024 East of 1/4 Post set 1/8 Post 60 1/2 ch

South of Random

W Pine 8 N 10 1/2 W 8 1/2
^{county record}
do 8 S 45 W 28 1/2

I then run South from N 1/4 Post Van. 3308

8095 fell 75 1/8 W of 1/4 P. 2 orig BT nearly
gone but remarked & new post set

Correct Van going S. 40° 01' E 800 93

See 10-39-7 E cont NOV 9-1901

I then run west from E 1/4 P. Van 4 76
7992 intersected WEST SEE could not find
1/4 Post. Set ^{captured on 102} two line stakes and at 5000
Set Talley Stakes. I then went to N 1/4 Post
and run Pocket compass & faced to
NW corner. which I identified by the
Birch Stump which stands N 2 W 25 links
The BT on stump was plain & same
of the marks on tree (which was down)
The aspen was entirely gone. There is
another Birch standing SE from corner
which ^{marks} the marks for this corner but has
no bench mark, neither is it mentioned
in US field notes. I set new Post
and made ^{county record} new bearings
Sugar 7 N 53 1/2 W 33
Birch 9 S 53 1/2 W 33

I also found the Point of orig Post
in hole where it was placed by U.S.S
run South from this corner Van 4 76

SEC 10-39-7-E Nov 10 1901 cont

6983 full 33 links East of Meander, which I identified by the y Pin, which is down & marks nearly burned out. Made new Bearing

N Pin 9 N 30 W 7

I went N and set 1/4 Post at Proportional distance between this Meander & NW corner which makes the distance from corner

all copied on Page 102 county record
South to 1/4 P. 39.62 ch

Mable 9 S 12 W 43 1/2
Birch 10 N 9 W 30

I found the distance north to E + W 1/4 line to be 4.13 1/2 ch and distance from E to W 1/4 Posts to be 79.54 ch

I then went E and set the center at Intersection of corrected 1/4 lines

W Pin Stump 22 S 84 E 26 3/4
do 38 S 56 W 34 1/2

Distance to N 1/4 Post	3930
" " S " "	4165
" " E " "	3971
" " W " "	3983

SEC 10-39-7 cont Nov 10 - 1901

1965 N of center set 1/8 Post

W Pin Stump 38 N 13 W 97
do 18 S 14 1/2 W 72

1984 E of center set 1/8 Post

W. Birch 12 N 88 E 26
do 8 South 51 1/2

I then run west from N 1/8 Post on East Sec line Var 6.15' E

4009 1/2 full 21 N of 1/8 Post

all copied on Page 102 county record
I then run South from E 1/8 Post on

North Sec line Var 40' E

3884 full 16 1/2 East of 1/8 Post

went North & at intersection of corrected 1/8 lines set 1/16 Post in the center of NE 1/4 and corrected lines East and north to 1/8 Post on Sec lines finished this Sec Nov 11 - 1901 - 4. PM

Remained hard in P.M.

See-11 39-7 E nov 13 01

on true line Bet 1/4 Post Bet
10+11 and 1/4 P Bet 14 & 15 at
3884 1/2 from each 1/4 Post

I then set Temp corner on
E+W ~~W~~ line at proportional distance
Bet 1/4 P on S side of Sec 10 and 1/4 P
on S side of 11 and on true line Bet:
These 1/4 Posts. his Page are copied on Page
103 county record

I then Sprung Temp corner on E+W
line North 234ch to Temp corner on
N+S line and Sprung Temp corner
on N+S line East 30ch to Temp cor=
an E+W line and set corner to

Sec 10-11-14+15 W Pine Stump 36 S 34 W 67
do 28 S 76 E 36
I went N + set 1/8 Post at equal

distance Bet 1/4 Post + S E corner or at
1942 1/4 N of corner { N Pine 8 N 15 W 23
do 7 S 16 E 29

I then set 1/8 Post equidistant Bet the
South 1/4 Post of Sec 11 and SW cor

SEC 11-39-7-E nov 13-1901

and on true line Bet these Posts
after setting this Post first on true line
line Bet 1/4 Posts of 10-11 I sprung it
North 137ch into line

W Pine Stump 12 S 60 1/2 E 51
N " " 14 S 49 W 28

Distance from S 1/4 Post to SW corner 3983 ch
" " S 1/4 " of Sec 10 to S E
corner is 3944 1/2 ch

The course of line between S E cor of 10
& South 1/4 Post is 80° E

The ^{copy of line set} ~~Post~~ from S 1/4 P of 11 to SW corner
is 4.30° E

are copied on Page 103 county record
I found WD Guzman had run the
E+W 1/4 (see 11) so I picked it up and
west side of Sec 4 found at

8056 He had felt 106 South of W 1/4 P

His line when I picked it up showed
a var 330° E + talley stakes every 500ch

I then began at South 1/4 Post and
run North Var 3 1/2 E

104 See 11-39-7-E cont' Nov 15 " 1901

7524 full 81ch east of 1/4 Post org BT
Copied on Page 103
made new post & marked it 1/4 S

Went South & set center of Sec used Guaman

86 1/4 line - WPine 24 S 65 E 7 3/4
10 Birch 10 N 16 W 39 1/2

Distance to N 1/4 Post 3784 ch
" " S " " 3740
" " E " " 4022
" " W " " 4034

1870 South of center Set 1/8 Post
WPine Stump 36 N 7 W 17 3/4
do 36 S 52 1/2 W 32 1/2

2017 west of center Set 1/8 Post
WPine Stump 15 N 70 W 9 1/2
do 11 N 61 E 8

I am South from W 1/8 P. on E & W 1/4 line

3862 full 10 ch East of 1/8 Post

8 then East from 1/8 on ^W Sec line South
of 1/4 Post

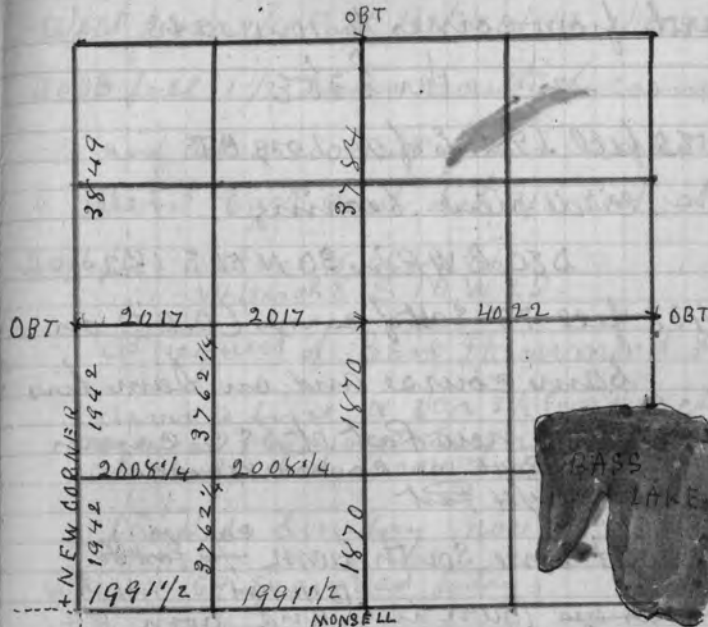
2008 full 38 1/2 South of 1/8 Post

Set 1/16 Post in center of SW 1/4

NPine 10 East 10
W do 12 S 62 W 2 1/2
conty used

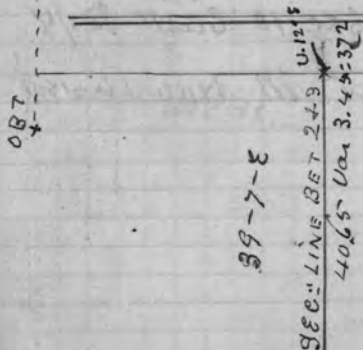
SEC 11-39-7 E

105



Finished NOV 15 1901

cut up the SW 1/4. For Pass Lake



39-7-E

SEC: LINE BET 243
4065 Van 3.45-372

S E @ Line Bet 2 & 3 39-7 Nov 15-01

North from corner to 10-11-2 & 3

Var 3.36° E

4065 fell 19 ch E of 1/4-1019 BT

Made new bearing

S 80 d W Pin 30 N 51 E 182

4437 fell 75 East of corner (D. BT) on

same course and on same line

Put in new Post at S E corner

Copied on Page 101 County record
and 1/4 Postcorrected line South from ^{corner} 1/4 Post to
corner on Town line ^{to 1/4 Post} and from 1/4

South to corner of 2-3-10-11

also corrected S E line from 1/4 P
on South side of S E 10 East to 1/8
Post. finished at M Nov 16-1901

Town Line Bet Towns 39 & 40 - R 7 E 107

West from 1/4 Post Bet 1 & 2 Var $3.1/2^{\circ}$ E

4038 fell 1/2 Links South of corner

and set new Post from 4.0. BT

Went East and set 1/8 Post at

2016 1/2 = N. Pine 8 N 24 E 17
W Birch 8 S 10 W 25

at request of Ben Hammond &

run a line N 31 d 3/2 E 2000 ch

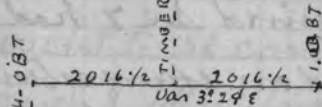
copied on Page 101 County record
which reached through all the timberfinished Sunday Nov 17th 1901

I am 59 years old today =

Worked Surveying in camp 3-9 1/2 days

" " " " 4-1 1/2 "

" " " " "



SEC 7 40-7-E NOV 1901

commenced at N&E corner and run
South. Var $2^{\circ}50' E$ OBT

1996 fell 7 links West of $1/8$ Post set by
Monsell

I then went South and found $1/4$
Post 1 OBT + Post set by Monsell.

I then went to SE corner + set
a new Post from OBT. as Monsell's
Post (which was there was to far S
+ East - I then run N Var $3^{\circ} E$.

1992 fell 3 links West of $1/8$ Post set by
~~Monsell~~ Mansell - I then went N to
 $1/4$ Post + went W and found $1/8$ P.

I then made up my mind Sec 7 had
been subdivided - and on examination
found it so. Mr B Hammond came
to camp at noon + informed me
it was Sec 6 They wanted cut up
instead of 7 + Mr Bissel had
made a mistake.

SEC 6 - 40-7 NOV 1901 P.M.

North from SE corner Var $3^{\circ}30' E$

4012ch fell $6\frac{1}{2}$ links West of $1/4$ P OBT

corrected this line South to SE corner
and set $1/8$ Post equidistant Bet cor + $1/4$ P. at

2006 | Birch $8N82W 31\frac{1}{2}$
Red oak $14S 21 E 11\frac{1}{2}$

= 20 =
West from $1/4$ Post Var $3^{\circ} E$

8141 fell 421ch South of $1/4$ Post on Range
Line 1. OBT. aspen gone. Made new
Bearing! Sugar $8N42E 13\frac{3}{4}$

corrected Var. 00. SEE for correction 00.518

This line East to Talley 12.
and from Talley 8 to East $1/4$ Post

NOV 21 - 1901

41-7
went to SE corner of Sec 31-40-7 E
which I identified by both org BT.
aspen is down + nearly decayed - Made
one new bearing W $16N11\frac{1}{2}E 25$
I then run East Var $3^{\circ} E$
3975 $\frac{1}{2}$ fell $37\frac{1}{2}$ S of $1/4$ Post - which I

= NOV 21 - 1901 =

41-7

4th correction line on S side of 32 + 33 40-7

Identified by both org BT. nearly gone

Made new bearings + set new Post

Birch 8 N 32 E 39

to 10 N 13 1/2 W 28

I run east from this 1/4 Post var 3 1/2 E

3961 fell 30 1/2^N of corner to SEC²² 32 + 33 - 40 - 7Which I identified by both org BT in
good state of preservationStill East on 4th correction line var 3⁰E

= NOV 22 - 1901 =

East from corner of SEC²² 32 + 33 - 40 - 7 E
var 3⁰E2303 fell 20 links N of corner to SEC²² 4 + 5 - 40 - 7

4000 could not find 1/4 Post on S side of SEC 33

7988 fell 64 ch N of corner to SEC²² 33 + 34 - 41 - 7

corrected this line west var 2 3/2' E DEC 80

5685 fell 2 links N of corner to SEC²² 4 + 5 - 40 - 7

7988 SEC cor to 32 + 33 41 - 7 - E

Corrected line west on South side of SEC²²32 41 - 7 E cannot var ^{to 1/4 Post} 3⁰E DEC forcorrection to 1/4 Post var 3⁰E

4th correction line NOV 22 - 1901

corrected line west from 1/4 Post on the
South side of SEC 32cannot var 4. ~~0~~ DEC for correction .94I found in correcting this line. The corner
of SEC²² 5 + 6 - 40 - 7 1932 East of corner
to SEC²² 31 + 32 - 41 - 7 and 14 links South
of correction line

NOV 23 - 1901

West on S side of SEC 31 var 3 3/4 E

3993 fell 38 ch N of 1/4 Post. Which I iden-
tified by org Post, and by stumps of both
org BT. Set new Post + Marked new BT

W Birch 10 N 55 E 40

Maple 8 N 76 1/4 W 40

I then run west from this 1/4 P. var 3⁰E

2218 fell 24 N of the NW corner of SEC 6 - 40 - 7

4281 " 51 N " " corner of SEC²² 31 + 32

Town 41 - Range 6 + 7 E - 2.0 BT ash down set

corrected this line from NW corner of ^{new Post}
SEC 6 - 40 - 7 to 1/4 P on S side of SEC 31

41-7

Correction line on South Side of 31-41-7

I found "in connecting this line" that
The NW corner of Sec 6 40-7 stands 3
links N of correction line into Sec 31-41-7
I corrected this line East to corner of Sec
4 & 5 (Which stands 2 links South of the
4th correction line

I found the returned distance given
by U.S. Surveyor on N side of Sec 6-40-7
to be 8200 ch - My measurement is
8143 leaving a shortage of 57 links
which I proportioned and set N 1/4 Post
for Sec 6-40-7 - 3972 1/4 ch West of corner
to Secs 5 & 6 and on ^{4th} correction line

I then run South from this 1/4 P
Through the center of said Sec 6 - Var 3 1/2 E

B.T. for Sugar 10 S 70 W 41 1/2 3
1/4 Post do 9 S 15 1/2 E 29 3

6447 fell 143 W of 1/4 Post 2.0. B.T.

Corrected this line N + set center of Sec
.. Var going S 4 3/4 Sec 222

SEC 6-40-7-E NOV 24-1901

center of section

W Pine 17 N 74 1/2 E 5 1/2
N do 17 S 39 1/2 E 16 1/2

Distance to N 1/4 Post 2357
" " S " " 4090
" " E " " 4016
" " W " " 4114

3963 1/2 W of center set 1/8 Post

{ Birch 10 S 45 E 42 }
{ DO 16 N 54 E 56 }

2008 E of center set 1/8 Post

{ Sugar 8 N 55 E 9 1/2 }
{ Birch 10 S 10 E 28 }

2035 S of center set 1/8 Post

W Pine 9 N 28 E 21
Maple 8 S 20 W 20

West from S 1/4 Post var 0 1/2 E

4268 fell 36 S of SW corner 3.0. B.T.

Set new Post

S set 1/8 Post at ¹⁹⁷⁸ 2026 ch west of S 1/4 Post

W Pine 9 N 74 1/2 21
W Birch 12 S 83 27

I set this Post by proportional measurement
There was an overrun of 54 ch

SEE 6-40-7 NOV 25 1901

N from SW corner Var 3 1/2 E

4000 feet 156 ch East of 1/4 Post ORG. BT.

Set 1/8 Post Equidistant Bet 1/4 P. & SW corner
 SEE Page 115 for Bearings to this 1/8 Post
~~2150 1/2~~ ~~2150 1/2~~ ~~2150 1/2~~ ~~2150 1/2~~
~~2150 1/2~~ ~~2150 1/2~~ ~~2150 1/2~~ ~~2150 1/2~~
 N from West 1/4 Post Var 4 1/2 East

2197 feet 4 1/4 links E of SW corner

connected this line S to 1/4 Post

East from S 1/8 Post on N+S 1/4 line Var 40 E 15 W

4008 feet 123 South of 1/8 Post connected this line

East from 1/8 Post 2000 ch

West from same 1/8 Post through SW 1/4 Var 15 W

4144 feet ^{6 links N} 26 ch of 1/8 Post connected this line

East. and then run N from E 1/8 P. on

South see line Var 40 E

4038 feet 67 W of 1/8 Post. went South
 and set 1/16 Post in center of SW 1/4 and
 connected 1/8 line South to 1/8 P. on the line

= Wednesday Nov 26 1901 =

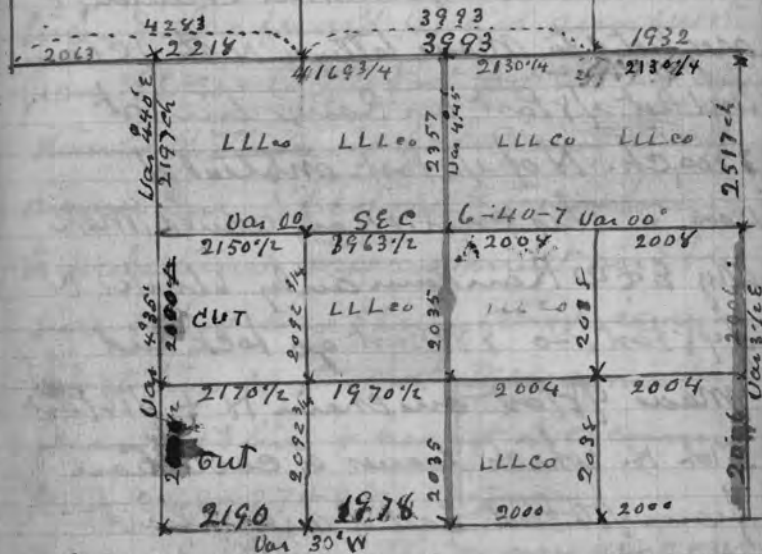
N from W 1/8 P. on South see line Var 40 E
 over to Page 116

Range for 1/8 Post from Page 114

W Pine Stump 14560 W 11

" Birch Tree 8537 E 52 1/2

SEC 31-41-7 E



The E + 10 Random line in SW 1/4
 is only 6 links N of west 1/8 Post, and 3 links
 of N of 1/16 Post in center of SW 1/4
 There was a mistake made in chaining
 the west see line and made considerable
 trouble

SEC 6 40-7-E cont.

4635 feet 52 1/2 W of 1/4 Post

corrected this line south to 1/16 P.

to set course | W B inch 7 55 1/2
 See bottom of this page | make 6 5 10 E N

finished at 12.30 P.M. Nov 26-1901

When I arrived at Rhineland ^{tonight} and
 was figuring over today's work I found
 when error was found in chaining I
 neglected to make latter 1/4 N the 1 chain
 and set 1/8 Post on Range line at
 3900 ch. N of 1/4 Post. instead of
 4000 " This correction would make
 my E & W Random only 6 links N
 of 1/8 Post. So I must go back and
 make 1/8 Post on chain N to 1/16 Post
 51 ch N. which leaves a correction
 from 1/16 Post East of only 2 links
 Practically Random is correct

W B inch 7 55 1/2
 do 10 65 W 19.

SEC 22 36-11 E Nov 28-1901

^{referred on Page 363}
 The original SW corner of this
 Sec. has never been found. I want to get
 the N to 1/4 line. So must have this
 corner. I found M E Mansuel had
 run N from 1/4 P. between 27+28 to
 1/4 Post bet 21+22. He had divided this
 distance & set Temp Post on his Random
 line. I also found he had run west
 from S E cor to 1/4 Post bet 21+28 and
 divided distance He had sprung Temp
 corner on N to S line & to conform
 to proportional measurement on E to W
 line & had also sprung Temp corner on
 E to W line N to meet measurement
 from N to S line & had set Sec corner
 at 21+22-27+28 corners
 I run East from this corner on 2-W
 4319. feet 150 ch. N of 1/4 Post set by
 Mansuel - correct on 3.59 W
 near

See 22 36-11 E cont NOV 29, 1901

North from S $\frac{1}{4}$ P. set by Mansel

Var 70° E.

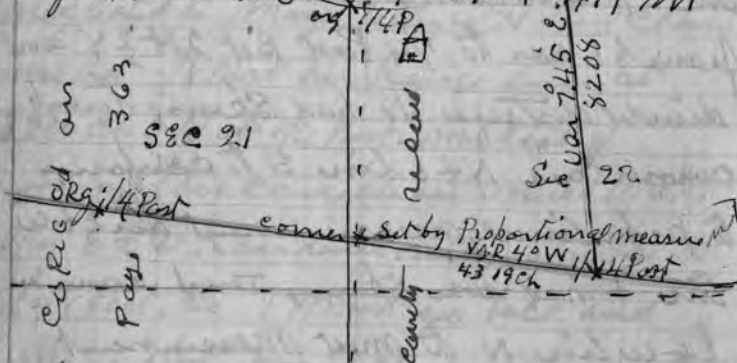
8208 fell 101 ch East of $\frac{1}{4}$ P. 2. Org^{BT}

Went S to center of Sec^{BT} and then
connected line South to $\frac{1}{4}$ Post

connected Var going N 71° 42' E

See far connection 123

finished Dec 1-1901 4 P.M



This SW cor + S $\frac{1}{4}$ Post of SEC 22-36-11
were set by ME Mansel by Proportional
measurement after testing his work
& used them to run N+S $\frac{1}{4}$ line in
Sec 22.

See 33-35-11 E Dec 3 1901

capt^{ed} on Pors 358
Went to North $\frac{1}{4}$ Post which stands in
a Wagon Road & said to be right. The W Pin
BT. has been cut. Stump removed and
Sits on west Sid of Road. August apple camp
said he knew the Post was set when it now
stands from the org BT $\frac{1}{2}$ before they were
removed.

I commenced at this Post and
run South Var 70° E

Dec 4

7804 fell, 99 ch W of Post One org. BT & one Stump
Set new Post and run East Var 30° E

4069 fell 195 ch South of what is said to
be the corner of 4+5-32+33 but there

are only 2 trees and neither of them
agree with U.S. Field notes I do not think
it is the correct corner, also the B.T. on one
of the trees has been cut out and looks as
if it had been done at the time the goat
survey was made. This tree is a y Birch
while the goat notes call for a Pine. the
other is a hemlock but is much larger (and
from the facing) does not stand in the
course from fact as given in goat notes
= as Mr apple camp requested me to
use this corner I did so, using a Post
set by someone who made as good a
guess as he could = I also looked over
goat notes for this whole town line and
could not find a corner that will
compare with these two trees

Run N. from this supposed corner Var 2 $\frac{1}{2}$ ° E
& run on this course as there had been
a line run North and connected up on $\frac{1}{4}$ P.
7912 $\frac{1}{2}$ fell 154 ch East of Sec corner

There was one org. BT. down also on
Map by someone. It was also down
Set new Post from org BT & Stump of
the other corner over road

SEC 33. 35-11-E DEC 5-1901 cont

Went South + Set $1/8$ Post NO Bearings
 corrected line South and Set $1/4$ Post
 NO Bearings Went South + Set $1/8$ Post
 NO Bearings. corrected line South to supposed
 corner. correct Var $3^{\circ}50'$ DEC α 234.
 copied on Page 358

Friday DEC 6" 1901

East from $1/4$ Post set without Bearings
 Var $3^{\circ}1/2'$ E

7986 found old goat line but could
 not find $1/4$ Post

8464 found another old line and
 464 South found Birch tree marked
 $1/4$ S. and believe it was made by goat
 Surveyor. But I do not think it is the
 $1/4$ Post given in goat Field Notes, as
 they call for Birch $15^{\circ} 32' W 33'$
 do $15^{\circ} 28' E 19'$.

This tree is about the right size, but
 is faced on the SW side and there is
 no evidence of any other Birch near.
 The timber is all standing except a thin
 I put up a stake $S 88^{\circ} W 33'$ links from
 this tree & tied onto it
 I found the line going South from this
 Post does not seem to corner as
 Town line while the one I found at 7986
 does

Went West and Set Stake for corner
 NO BT ^{corner name}

Distance to N. $1/4$ Post 3802
 " " S " " 4002
 " " E " " 4387
 " " W " " 4077

Went West + Set $1/8$ Post NO Bearings
 Run South from this UP Var $4^{\circ}50'$
 Saturday December 7" 1901

3987 fell $33^{\circ} 7' 8" E$ of $1/8$ Post on town line
 which I set without Bearings

SEC 33-35-11-E DEC 7" 1901

copy on page 358

corrected line NE $1/8$ Post on $8^{\circ} 1/4$
 line

I went to NE $1/4$ of this sec and found
 org corner. Identified by the org Birch B T.
 It stands 100 ch N of and $340^{\circ} E$ of creek
 course of stream + did² pair corner agrees
 with goat notes. I also found a corner
 set by cavers 700 ch west and 500 ch South
 He set this fast from a tree which does
 not agree with goat notes, I set it in a
 Birch. In following line N from org
 corner I find the Birch tree for E $1/4$ P
 is an direct line South. also in going
 N from org corner I find org $1/4$ P.

I am now satisfied that Birch
 on East Side of $1/4$ Post is one of the org BT
 corner name



Sec 28-35-11-E Dec 9-1901

Went to center of Sec on Town Road
Placed Flag at North + South $\frac{1}{4}$ Post.
As Tom Owen had brushed out this line
I used it 7905 fell $27\frac{1}{2}$ links South
East of South $\frac{1}{4}$ Post found Owen had
Set Stake Equidistant Bet $\frac{1}{4}$ Posts
As I did care for the E + W $\frac{1}{4}$ line I
Measured between E $\frac{1}{4}$ Post and N + S
 $\frac{1}{4}$ line found Owen's fast 11 links out of
true line I wanted the N + S $\frac{1}{8}$ line in
SE $\frac{1}{4}$. There is no timber along the E + W
 $\frac{1}{4}$ line. Set Temp $\frac{1}{8}$ Post Equidistant
Between E $\frac{1}{4}$ Post and N + S line at a
Point near where E + W $\frac{1}{4}$ line would
be.

I then Run East from South $\frac{1}{4}$ Post via 80E
3200 ch Intersect Creek 20 links wide across SE
3550 " Same " " " " " NE
3710 " " " " " " " " SE
4920 fell 8 links North of Sec corner, which
I identified by both org BT. Spence is
down + very rotten. Set nice 4 + 4 cedar Post
Went West + set $\frac{1}{8}$ Post at 2460 ch and
4 links South of Random

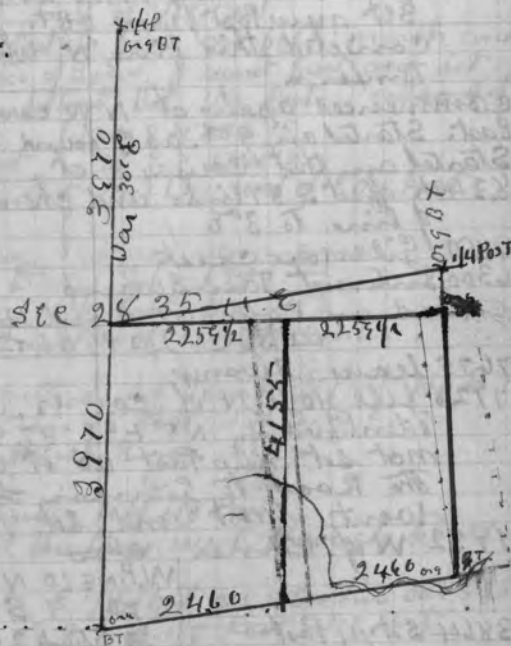
Birch 12 @ 39-214
50 10 @ 64 W 17 $\frac{1}{2}$

Run North from this $\frac{1}{8}$ Post - Van 3' 15" E
= Sec 10 =

4155 fell 108 W of Temp $\frac{1}{8}$ Post which
I set by measuring West from E $\frac{1}{4}$ Post
to N + S South $\frac{1}{4}$ line
finished Sec 10-1901

Sec 25. 39-7-E see next Page

Rotted



S.E.C. 25-39-7-E. Dec 19-1901.

Commenced at NW corner which I identified by both org B.T. and two others set by W. Allen. map 12 S 24 E 14 1/2
 Birch 14 S 74 W 40
 org B.T. are Broken off just above Marks =

Run South Var 3 1/2 E

39.97 pole 120 ch. W of 1/4 P. 20 B.T. Dead

Set new Post from B.T.

connected this line N where there was timber =

commenced again at NW corner and run East. Started on 90° as I found org line started on that course. at 8.34 ch offset S 87 links and changed course of line to 30°

4850 Gilmore creek

6300 Intersect Tam Swamp

copied on Page 109 county record
 DEC 20 1901

7475 leave Swamp

7725 pole 40 1/2 N of corner. W of
 identified by NE + SE B.T. Stumps did not set new Post as it would be in.

The Road to Gilmore Lake

Went west and set 1/8 Post at

1932 W of corner also

W.PINE 10 N 53 W 67 1/2

DO 7 S 70 E 21 1/2

DO Stumps 20 N 10 1/2 E 84 1/2

DO 36 N 77 W 62

3864 set 1/4 Post

org gone

South from NE corner Var 30°

50 enter Tam Swamp

700 leave "

1790 Gilmore creek Run SE

2130 " " " SW

2550 " " " SE

2950 leave Bottom ascend steep hill

S.E.C. 25-39-7 E cont. Dec 20 1901

4009 pole 14 links West of 1/4 Post. which

was identified by sufficient evidence from which I set Post of W.PINE 6x6 in 3 ft high connected line N and set 1/8 Post at

2004 1/2 W.PINE 10 N 61 1/2 W 122 1/2

DO 18 S 51 1/2 E (+ East of creek) 207

West from E 1/8 Post Var 30°.

7687 pole 42 links S of 1/4 Post

As the 1/4 Post is gone on both north and South sides of Sec = I went East and set center Equidistant Bet 1/4 Posts - also set 1/8 did not

Tam 9 N 27 E 15

mark B.T. on Post DO 9 S 17 W 10

I also set 1/8 Post 19 2 1/4 West of E 1/4 Post

Copied on Page 109 county record

DEC 21-1901

South from N 1/4 Post Var 40°

4003 pole 4 links W of Temp = center

Went North + set Temp 1/8 Post NO B.T.

Run E from this 1/8 Post Var 2.50 E

1180 Gilmore creek Run SE

2180 " " " NE

3848 pole 12 links N of 1/8 Post

connected this line west through timber

South from E 1/8 Post on NS line Var 330° E

1987 pole 12 S of 1/8 Post 1/16 Post

Set Temp 1/16 Post } NO bearings

connected all the lines in NE 1/4 when there is any timber near Random lines

Town 36 - 8

RANGE LINE

BETWEEN RANGES 8 AND 9



SEC. LINE BETWEEN SEC. 1 AND 2

DEC. 26" 1901

This line was ^{varied} Vincent Groat

as I could not find Meanders on the
Left bank of River. I am a line from
meander set by down on Right bank of
River to corner on Range line
Var 10.00 E 3489 feet 56 N of corner
erected line West to River

Town 38 N Bet Ranges 8 + 9 E

South from 1/4 Post Bet Sec 31 + 36 Var 00
3935 feet 65 1/2 W of corner
went N + set 1/8 Post at 1967 1/2 ch
Hemlock 36 S 55 E 9 1/2
do 11 N 33 E 34

This 1/4 Post Bet 31 + 36. Stands 10 Rods E of line
Spotted by goat - The E Bearing. does not Hook up
with field notes as to course. Otherwise it is OK
At township corner I found 3 of the
orig. BT. But they do not agree with got field
notes as to course + distance - I found the course
of the one which stands N 26 W 558 and the one
which stands S 23 E to agree agree by taking
The measurement from the one which stands
S 23 E. The one which stands S 7 W 673 does not
agree with these in any particular. The S 13
and kind of stump is OK that is all





Journey 7" 1902

35-8-SEC 11 January 9 1902

went S. $1/4$ Post which I identified
By 2 D.B.T. + Run N Var. 4° E

8192 fell 89 links W of $1/4$ Post. 2. D.B.T

went S + corrected this line in places
where there was fire timber
work done for Mike Johnson

SEC 26-38-8. January 13-1902

went to East $1/4$ Post found three trees both
across out down faced the stumps and
marked them B.T. copied on Page 178

Run West Var. 30° E

8000 could not find $1/4$ Post and went
to S.W. corner which I identified
by 3 org B.T. all down Elm is gone
found original Post.

Run N Var. 23° E

8000 fell 129 ch West of corner which I
identified by org B.T. N.E. corner is broken
off just above bearings

went South and set $1/4$ Post $64\frac{1}{2}$
East of Random. + 400 ch from corner

W. line $9386\frac{1}{2}$ W $23\frac{1}{2}$
N Do Stump N 45° E 1 link

country

Picked up E + W $1/4$ and went west
364 ch making 8264 ch and
fell 6 links N of $1/4$ Post
went East + corrected line from
center to E $1/4$ Post + sealed
up Messers Record

280-18-36-9.8 February 14-1902

North from SW corner original B.T.

Var. $3^{\circ} 25'$ E

2018 fell 26 links W of $1/8$ Post set by Doer
3643 found set by Julia 43 W of Meander
which I identified by East org. B.T. Stump
corrected line south to bore $1/8$ P
+ found it on true line N from
S.E. corner copied on P 200 county record

I also made true
bearings + new Post at Meander

Hemlock to East 12

Tamara 8 N 82 W $27\frac{1}{2}$

These bearings were made with Pocket
compass and a var. of 3° E was
made when taking course to trees

□

Christy Douglas. Oct. 3, 1922

58e 15-36-9e Feb 17 " 1902

commenced at SE corner Post set
from O.B.T Run N Var 4⁰⁰
1740 to meander on North Side of Lake
5832 There N 15⁰⁰ W Var
5917 North of meander fell 26 links West
of Sec. car. This Post was set from O.B.T
which has since been destroyed by fire
made new bearings N. Pine 14 N 46 E 80

do 16 S 17 1/2 W 143
Proportioned distance between the
meander & NE corner and set
1/4 Post at 2129 N of meander and
9.37/100 links E of Random

W Pine Stump 18 N 45 E 62 1/2
N " " 12 S 40 1/2 N 64

Post was Red oak 3x3 in 3 1/2 ft long
copied on Page 199 county record
then Run West from this 1/4 Post Var 3 1/2 E

2200 middle showed 8⁰⁰ W Var
7275 Pelican River needle staked 15 1/2 E Var
8472 fell 37 links N of 1/4 Post O. + New B.T.
needle staked 5⁰⁰ E Var

went to NE corner Run west 22⁰⁰
9020 fell 13 links South of car
went East to set 1/4 Post Equidistant
But see corners + 9 links North of Random
E Notches near There is a Rock
444 but 2 feet high in which to set
which is N 20 1/2 W 24 1/2

then a ~~post~~ from ~~SE~~ corners
set 3 1/2
then went to SE corner + Run west
6884 intersect Right Bank Var 3 1/2 E
of Pelican River N of meander
6989 over Pelican River
8142 fell 82 links N of corner set by Don
connected East "

58e 15-36-9e Cont Feb 18 1902

6106 1/2 S of Sec car set 1/8 Post
N. Pine 8 S 71 W 10
W " 9 N 27 E 32
4071 on Equidistant between corners set 1/4 Post
N. Pine 8 S 13 E 13
Spine 8 N 22 E 23
2035 1/2 West of SE corner set 1/8 Post

then Run North from 3 1/4 Post Var 7⁰⁰ W
6530 at NW RR track
7833 fell 36 W of 1/4 Post
connected this 1/4 line South to South 1/4 Post
Set center at intersection of connected 1/4 lines
W Pine 7 S 75 E 34 1/2
N " Stump 14 S 86 1/2 W 41

Distance to E 1/4 Post	4073
" " W 1/4 "	4379
" " N 1/4 "	3838
" " S " "	3995

copied on Page 199 county record
1997 1/2 S of center set 1/8 Post
Stam 8 N 74 1/2 E 4 1/2
" 10 N 46 W 10
1919 N " " " " " N Pine 12 N 55 E 15⁰⁰
and others
2036 1/2 E " " " " "
2199 1/2 W " " " " "

went to 5 1/8 Post on west Sec line set by
myself 3 years ago + Run East Var 3⁰⁰
4235 fell 496 S of 1/8 Post
connected this line west to River

SEC 15 36 9 E FEB 21st 1902

Set 1/8 Post Bet S 1/4 Post & S E Corner
 ashen 9 N 76 1/2 W 42

Bunch 4 S 22 E 6 1/2

Set 1/8 Post Bet E 1/4 Post & NE corner
 WPINE 12 S 30 1/2 E 59 1/2
 N " 7 S 87 1/2 W 71

I found no local attractions except vis
 assume the 1/4 lines. The needle showed
 an attraction of 6th 269 an
 both 1/4 lines

finished FEB 21 - 1902

copied on Page 199 county Record



SEC 15 36-9-E

SEC. 24. 42-5-E FEB 25-1902

Commenced. at N.W. corner which I
 identified by N Pin N 10 W 200. W Pin gone.

Run East Var 4 1/2°

3838. fell 9 links S of ~~the~~ 1/4 Post. which
 I identified by 2 org B.T.

connected this line west to see corner
 corner I found 13 trees cut an S E S W 13 which
 I will scale later on

I then south from NW cor Var 3 1/2°

3944. fell 14 1/2 ch East of 1/4 Post which
 I identified by 1 stump & west B.T.

Made a new B.T. N Pin. 16 S 84 1/2 W 95

I then run East Var 4 1/2°

FEB 26

Stopped at 400 ch as there is no timber
 along the line

I then went to the North 1/4 Post and
 Run South Var 3 1/2°

8129 fell 120 ch west of 1/4 Post which
 I identified by the 1/2 Pin which is
 all right, aspen gone. I then
 went north and ~~and~~ canceled
 line from center north. 2000 ch
 finished at 4 P.M. FEB-26. 1902

Sec 14 1/2 on to line
 East 401 and set an c

Rock 15 9 22 5 39

Section line Bet 15+16 42-5 Feb 27 02

I set corner to 15-16-4+9 last fall by taking measurement to bank of River. Which agrees with govt. Measurement

Since then other Parties have set an other corner which is claimed to be set by proportional measurement. from 1/4 Post to Meander on N side of Lake, B, & recent decision of Supreme court Meander corners are not to be taken for distance such being the case proportional measurement must be made from same govt monument farther north

I commenced at 1/4 Post Bet 15+16 and ^{Post} measurement north on 4° E on line same but occludes which agrees with line run by govt surveyors, as the old line can be distinguished by the marks on trees. I used a standard steel tape bought of W. T. & G. Sinsley

I found W. D. Guarnear had set a line of line stakes on my old Random 3592 found a round Birch stake 16 links W of line

4410 Interest flowage
4500 Original Bank of River
5000 " " Lake

There has been a canal made to connect River with Lake, Meander zone 7900 over lake & flowage

12000 came when W. D. G. had quit I came back along the line and at a point 11500 chain north from 1/4 Post Bet 15+16 found 1 org. BT (The Run) 3.10 E of Random I also found the Meander on N side of Lake. It is down and may have moved from its original position. I proportioned measurement and set Temp corner to 9-10-15-16-3863 2/3 ch north of 1/4 Post & set 1/8 Post at 1931 2/3 N of 1/4 Post. NO BT.

S.E. Sec. 2-42-5 E March 26 1902

as there was no SE corner + no meander on West side of Clear Lake I went to 1/4 Post Bet 1+12 which I identified by both O.B.T. nearly gone and am west Var 3 1/2 E.

2.82 found Meander on E side of Lake & commenced again at Meander (which I identified by 1. O.B.T. I found the distance across the lake to be practically the same as that given in govt Field notes, and

37.32 ch West of Meander set Temp corner Still West on same line Var 3 1/2 E
3868 fell 72 1/2 North of 1/4 Post which I identified by both O.B.T. both are down and nearly gone. No green timber near. May make bearing when I am North as there is a shortage of 1.48 ch Bet Meander and 1/4 Post & proportional same + moved Temp corner East 7.1 ch and South onto true line Bet 1+12 and 2+11.

as I could not find Meander on N side of I went to Meander Bet 11+12 and on South side of Lake & Run North Var 3 1/2 E

There is a low bank on N side of Lake and flowage extends nearly 1000 ch beyond org shore of Lake. I harnessed the Lake carefully where N Meander should be and found timber down & under the ice could see nothing but the roots above the ice but am satisfied. The distance returned by U.S. Surveyors is nearly or quite correct 4720 ch North of Meander & set Temp corner which is 500 ch N and 120 W of Temp corner on E & W Sec line Still north on same course 2700 Interest flowage originally a Tam's Swamp 4800 over same 7417 Interest Town Line 186 West of corner. The 4 O.B.T. are all standing, set new Post

SEE 2-42-5 east March 26-02

I found a shortage from meander to
see corner of 559 ch. Proportioned this shortage
But my starting point of meander & corner
on lower line & ^{corrected} temp. corner 207 ch
South. I sprung this N+S line East 129 ch
from temp corner on Random line or 617 1/2
links East of a true line

I sprung E + West line South 164 links
+ set corner to 1-2-11-12 No trees near
Post is 57.5 in & marked SEE-1-2-11-12

This makes the distance of N+S line
But 1+2 7624 in length a shortage of
352 ch I set 1/4 Post at a point 3824 N of
corner & an 1/8 Post 1912 N of corner
and on true line but corners

The bearings for 1/4 Post are & 1/8 Post are

1/4 Post

1/8 Post } WPIN 11 S 15 W 1 1/2
N " 11 N 15 W 8 1/2

The distance from SE cor to S 1/4 Post is
3939 - Set 1/8 at 1969 1/2

1/8 Post } E N Pin 8 S 1 W 121
Do 8 S 1 W 128

To get the E 1/4 Post I commenced at 27 arch
North of corner on Random and turned a
right angle West 10 chains then North
11.14 then turned right angle East to where
1/4 Post should be set distance to 1/4 Post
from where I turned an angle East - is
1155.

SEE 2-42-5 E. March 27. 1902

Went to S 1/4 Post, & Run North Var 4 1/2 E
369 1/2 N Pin Stump 11 in marked it 1/4 S - BT
7931 Town Line & links E of Post.

Corrected this line South to Talley 4
Neglected to say. 6470 euk 25 links wide Run 3 W

as I could not chain across flowage to get
East 1/4 Post. I commenced at a point 2707 ch
North of SE corner & run West at right angle
with N+S Random 800 ch then North 1117 ch
thence East 9.55 ch and set 1/4 Post

1/4 Pin 20 West 805

W " 8 S 70 W 829

Run West Var even needle

8119 fell 8 links North of 1/4 Post which
I identified by the 1/4 Pin which stands
N 6 E 840 ties is cut but Bench mark is ok
Corner & set center } N Pin 12 N 77 E 116 1/2
to 12 S 61 W 36

Distance to E 1/4 Post is 3966 - 3966

W " " 4153 4153

N " " 4093 4094

S " " 3888 3887

Went South and set 1/8 Post at 1919 ch

1/8 Pin Stump 14 S 2 1/2 E 24 1/2

" " 16 N 75 W 27

Set 1/8 Post on South See line 1970 W of SE cor

N Pin 8 N 85 W 121

Do 8 S 1 W 128

1983 West of E 1/4 Post set 1/8 Post

1/4 Pin 15 N 78 1/2 W 57

No others near on the East.

Run South from this Var 3.30 E

3831 fell 60 1/2 E of 1/8 Post

Corrected N to Talley 4

Went to South 1/8 Post on N+S 1/4 line

and run East Var 30 E

3963 fell 7 links N of 1/8 Post

corrected
 after
 finding error

SEC 2 - 42-5 @ cont. April 1-1902

Went to S $\frac{1}{8}$ Post on N+S $\frac{1}{4}$ line and
 run East Var 3:30 at
 3975 fell 30 links N of Post

Went west + Reset $\frac{1}{16}$ Post in center
 of S $\frac{1}{4}$ NW Pine Stump 11 B 11 W 8 $\frac{3}{4}$

Cancelled lines west + South from this
 $\frac{1}{16}$ Post

finished SEC 2 at 6 P.M.
 April 1st 1902

April 1st SEC 1-42-5
 1902

as I had run the Sec line Bet 1 + 12 and
 found its course to be on 3:55 So I
 began at the on SEC line Bet 1 + 2 at
 the $\frac{1}{8}$ Post N of SW corner and run
 East on this Var. to Lake

This is all done in in This Sec
 finished April 2 1902

4112
 2091
 1902

SEC 23-37-8 April 15 1902

Went to SE corner and found the orig:
 bearings gone, found new bearing made by
 Doan, and from this I found the remains
 of both orig B.T. Stumps. Set new Post
 and run west Var 3:30 E
 4182 fell 14 links South of $\frac{1}{4}$ Post found
 both orig B.T. the Stumps are cut high
 enough to leave marks
 Set new Post used old B.T.

Went East and at 2091 Set $\frac{1}{8}$ Post
 E 8 Run 7 S 63 $\frac{1}{2}$ W 58
 E 8 " 8 S 60 W 94

run ^{North} from this $\frac{1}{8}$ Post 2000 ch.
 on a Var of 3:30 E + Set Temp Post

April 16 " 1902

copied on Page 147

Went more South $\frac{1}{4}$ Post Var 3 $\frac{1}{2}$ East
 3200 Pond Bear N+S N 20 W 100
 3-w over same

4214 fell 72 north of SEC corner
 cancelled this line to 4144
 county Record

month from SW corner Var 2° E

60 27 fell 27 W of Wittless corner

Cancelled line South at 44 ^{1/2} 59 ^{1/2}

4144 $\frac{1}{2}$ Set $\frac{1}{4}$ Post SW Cor. House N 12 E ~~44~~ 2

B Pine 8 S 20 $\frac{1}{2}$ E 92 NW Pine Stump 20 W 45 W 33

Cancelled S. to SEC corner Set $\frac{1}{8}$ Post

2072 Pond Set $\frac{1}{8}$ Post

N Pine Stump 389 W 28 $\frac{1}{2}$

Went to west $\frac{1}{4}$ Post + Run west 2000 ch

Var even north

Went SW corner + Run west Var 2° E 2000 ch

4221 fell 5 links South of $\frac{1}{4}$ Post. 1.0 BT

Made new RT B Pine 10 S 15 W 47

Cancelled line E to SE cor. and made new

SEC 23-37-8 E cont. April 17 1902

BT for SW corner B Pin 7 S 15 1/2 W 78 1/2
 copied on " 18 S 67 1/2 E 108 No marks
 Page 147 county Record

SEC 22-37-8 E April 20 1902

went to SW corner identified by org
 Post + Bearings run N Var 89 1/2 E
 4132 intersected wet marsh
 5253 over. copied on Page 146
 8260 fell 191 west of corner identified
 by 10 BT stump found stump on
 SE bearing on Road (cut low)
 set new Post + West South
 2065 set 1/8 Post B Pin 7 N 70 1/4 W 65
 4130 set 1/4 Post B Pin 7 N 11 1/2 E 112
 do 8 S 40 E 28'
 6195 " 1/8 " Rock S 35 1/2 E 138
 2 in Pipe for Post No others
 county Record

commenced at witness corner on
 line bet Sec 22 + 23. turned off a
 right angle to said line and run west
 (New bearing for witness corner)
 Tam 6 S 24 E 40 1/2

8.63 ch. right angled north
 2.50 " to Sec line bet 15 + 22
 set witness corner 107 ch East and
 on Bank of lake
 N Pin 11 S 66 W 97

Y " 10 N 6 W 113

this makes witness corner 766 ch
 west of Sec corner (in lake)

Run West at Right angles with
 Sec line bet Sec 22 + 23 Var 29 E
 8241 fell 360 N of Sec corner
 came East and set 1/4 Post at
 41 20 1/2 and 180 S of Random SEC Page 146

SEC 22-37-8 cont. April 20 1902

Spruce to S 78 W 4 1/2
 do 7 N 6 E 16
 went East and set 1/8 Post at
 2060 1/4 west of NE corner + 90 links South
 of Random W Pin 10 S 28 1/2 W 16

J Pine Sta " 7 N 45 W 30 ✓
 copied on Page 146
 went East and moved witness corner
 South 33.79 links and took course +
 distance to bearings again which are
 TOW Pin 10 S 86 W 12 3/4
 7 W 11 1/2 N 44 W 86 3/4

Set a line Stake at 10.00 ch west of corner
 went to E 1/4 Post + Run West Var 45 E
 3570 intersect Lake + set Temp meander
 4380 over
 8577 fell 7 3/4 links S of 1/4 Post

as I had the E line and set new
 1/4 Post I commenced at E 1/8 Post
 on north Sec line + Run South
 I turned a Right angle from my
 Rand. on N line which is a
 right angle from E line. then
 turned off 20' W from this course
 8195 fell 27 1/2 E of a Point
 where I set 1/8 Post 2110 1/2 West
 of SE corner Record

county Book 6 S 75 1/2 E 147
 went North + set 1/8 Post on
 connected N + S 1/8 and
 E + W 1/4 line and is 208 5/2 West
 of E 1/4 Post N Panel 6 S 45 1/4 E 110

I found the needle is very uncertain
 in this section + I did most of the
 work by angles

SEC 23-37[±] 8 E cont from Page 144

Commenced at witness corner on line
Bet SEC 22 & 23 turned a right angle ~~west~~
East and ran 2000 ch. Then turned a
right angle North and ran 3370 ch to get
on line from NW corner in Pond and
on a Val of 47[±] E. or to make this line
run 2 1/2[±] Iron & Var. than the line Bet
22 & 23. POSEED on Page 148

3265 ch intersected flowage of Wisconsin
6590 our flowage

8143 fell 3150 ch north of Sec corner
New bearings Made by Mansell

W Piv 10 N 22 E 104[±] meander on W side of R
8 S 41 E 86[±] B Piv 7 N 11 1/2 E 46 1/2
concoiled line west to River, so 7 1/2 52 W 12 1/2
went to west side of River & set meander
which is 3265 E of NW corner. and is
325 West of orig Bank of River and on two
line Bet Sec. corners county record
concoiled line west and set 1/4 Post at
probational distance between orig Bank of
River & north west corner and is
412 1/2 E of NW corner B Piv 10 N 1/4 W 84 1/2
so 10 N 31 1/2 E 82

concoiled line west to Pond
work done for Douglas & Fortke

SEC 26 37-8 E April 30-02

commenced at west 1/4 Post, 200[±] BT nearly
gone. made new bearing NPS 185 46 E 86
Run North Var 3 1/2 E copied on
4181 fell 150 W of corner

concoiled S and set 1/4 Post at
2090 1/2 N Piv N 2 W 44 page 151

B .. S 83 1/2 W 79

concoiled line South to 1/4 Post
county R. read

SEC 3-38-6-E May 10 1902

commenced at 5 1/4 P which I identi-
fied by Iron Pin Placed there by Billy Allen
& put in a 2 inch Pipe 16 inches long
Run north Var 3[±] E.

7162 intersected Township line 141 W of 1/4 P
Identified by one orig B.T. and Post set
By Billy Allen with rock around it
Found SEC for correction to be 1.97 links
true Var to L 15 1/2 E

concoiled line South to 1/4 Post
commenced again at South 1/4 P and
run west Var 5[±] E (Sunday May 11-02
1.50 ch west March

1900¹⁰⁰ over " + set Hub
Siding of C.M. + St Paul R.R SW + NE

1160 Main line " " North
1892²⁰⁰ offset South 200 ch to mess Swamp

3651¹⁰⁰ " " North to line 200 ch
3986¹⁰⁰ fell 32 links South of Post set by Billy
Allen & marked 3-4-9-10. did not
find any bearings & set an Iron
Pipe 1 1/2 inches * 3 feet long for corner
to 3-4-9-10

Wire Stump 28 North 137 1/2
SEC for correction 800 Var 54 1/2 E
Went east to Hub marked 1100 ch and
concoiled line to 1/4 P. and prolonged
line east to Lake and set meander, an
Iron Pipe 1 1/2 inches in dia. and 4 feet
long. This meander is 1770 ch East of
1/4 Post and 157 West of Lake & also set
an Iron Pipe 2 inches in diameter and
and 1/2 feet long on SEC line 49 links
East of meander. There is a piece of
R.R. Iron stands 358 W 121 from meander
To get this line I had to right angle
South 187 and 1370 E of 1/4 P angled
back 109, and at 1770 angled back 78
+ links to + set meander

SEC 3. 38-6-E May 12 - 1902 cont

Rim N from SW corner Var 40° E
 1683 feet 36 E of Meander, identified by The
 Pine BT and Stump of Birch. The Pine is
 blown into Lake, cut a 3/2 feet chunk out
 of it at Stump to find marks. Placed chunk
 on the top of Roots to Stump - drove an iron
 Pipe 1 1/2 in by 4 feet at Stump of Birch +
 and 1/2 + 4 feet Pipe for Meander Post

Still N on same course
 2350 feet 42 links East of Meander, identified
 by Both orig. BT. Drove a 1 1/2 in iron Pipe 1 1/2 in
 by 4 feet for Meander Post as the Tamarac
 is dead and ready to fall over, and the
 Birch is down and nearly rotted, & drove
 an Iron Pipe at roots of each orig. BT.
 Both of these Meanders are in the Lake
 about 10 links from Shore

Still N on same line + course

May 13 1902

4849 feet 48 1/2 East of 1/4 P. Identified by
 The Tamarac BT given in US. notes
 found same one had made new bearings

Tam 10 N 25 1/2 E 173/4

DEE for canon 1.20 canon Var 4.41
 Copied on page 55 County record
 went to NW corner + Run South Var 3.30 E -
 3258 feet 163 E of 1/4 P.

I find the distance if line was straight
 from corner to corner to be 7800 ch

corner Var 40° E

Run East from west 1/4 Post Var 5.45° E
 4110 intersected N + S 1/4 Road 36 links
 S of Talley 4000 ch. I found the needle
 showed a Var of 445° at center of line
 & X 2394 center of RR track

May 14 - 1902

X Set center. A Pump Paint with 2 feet
 of Pipe driven for Post from which
 stands a W Pine Stump 185 12 1/2 E 77

SEC 3-38-6 cont. May 14 02

Distance to S 1/4 Post 3976

" " N " " 3145

" " W " " 4110

" " E " " in lake

Run East from center Var 533° on an interme-
 diate course bet N + S Sec line
 1525 intersect Lake + bet Meander cor

B. oak 8 N 34 1/2 W 37 1/2

I find the N + S 1/4 line has 336 more East
 Var than South Sec line
 and the E + W 1/4 has 228 more East Var
 than N + S 1/4 line

a difference of 7' between courses of
 1/4 lines

I then set 1/8 Post Equidistant between
 S. 1/4 P. on center of Sec no bearings. Drove
 an iron Pipe 4 feet long 1 1/2 in in dia.
 I stands on South side of round set.

Marsh no trees. Stumps or rocks
 to make bearings

I then run East from this 1/8 Post on
 an intermediate course between South
 Section line + E + W 1/4 line needle showed
 a Var of 5.45° E

283 offset South 368 to get to E + W Street
 1797 1/2 " North 368 " line

2475 intersected Lake + bet Meander Var
 Pipe 3 feet long 1 1/2 in dia. Bearings

E Oak 10 S 10 W 11

E to 10 N 78 W 66

Surveyed 15 lots 250 ch in width
 along West Shore of Lake in 88 1/4
 of Sec 3

Posted on Page 55 County record

South from Sec corner set by Billy Allen
Var 40° E

7644 feet 33 links West of Meander
Identified by 1 org BT. Pine Stump 16 N 5° W 19
Set new Post - Parties interested in lands
adjoining agreed to put an iron pipe for
Meander Post -

Cancelled line N + set 1/8 Post at
Proportional distances Sugar 10 S 46° E 58
Posted on Page 58 County Record
Set 1/4 Post at 3940 W.P. Stump 20 N 22 1/2° W 36

Set 1/8 Post 1970 S of corner
do 20 S 9° E 22
do 30 N 12° W 22 1/2
do 26 S 60° W 18 1/2

Cancelled line N to corner

S&E 9-40-8 E June 4" 1902

Commenced at N 1/4 P. Identified by Post set
by Mansell. from the org BT. They are both
bolted down and stakes are placed where they
once stood, and can still be identified by some
of the org marks. Run South Var 3° 30' E

When 500 chain South I found the needle
showed a Var of only 10° E Var and held the
same to S 1/4 P. I found some new
bearings for N 1/4 P. which are

Birch 10 S 72° W 27
W Pine 10 West 14 1/2
Sugar 12 N 4 1/2° E 31

5625 creek

5725 own creek at lower end of Sliverway
7941 bell 3.22 E of 1/4 P. identified by Post
and 1 org BT recently blown down
Made new bearings

Birch 10 N 19° W 33
do 12 S 29° W 26

found course of N + S section by use of
old random + cancelled lines result to
NW cor + chained South to 1/8 Post

S&E 9.40-8 and S&E 19 + 20 - 39 - 9

1/8 Post set by Mansell found distance to
the 1965 = set center of Sec on N + S
cancelled line where an intermediate
E + W 1/4 line crosses same

Dist to N 1/4 Post 39.50

Center of W Pine 7 N 6° W 26

do 20 S 77° E 64 1/4

Sec went N + set 1/8 Post at 1975
S of N 1/4 P. Birch 10 north 1 1/2
do 10 S 33° W 6

Cancelled line N to 1/4 P.

I was only to get the west + south line
of Lot 2. To scale trespass

finished June 6" 1902

S&E line Bet S&E 18 + 19 - 39 - 9 E June 11/02
went to 1/4 Post identified same by Dorro Post
and 2 BT. both cut down W Pine 4 S 73° 20

copied on Page 194 " 10 N 70° E 28

Run E Var 3° E County record
3963 feet 475 1/2 N of #88E corner which
Identified by 2 org BT nearly one. Made
one new bearing W Pine Stump 24 N 39° W 36 1/2
Cancelled line West + set 1/8 Post

650 = Available 12 S 65° W 29 =

S&E for cancellation 12 links to chain
Cancel Var 35 1/2 W

actual distance of this line cancelled, is 39.94 ch
This Post is equidistant

Run E Var 4° 30' E

3800 Intersect Dam Lake copied on Page 29.2

4922 over

6278 Intersect flowage

7193 " Thoughoroughfare

7933 over

8476 feet 46 N. of corner. Identified by
Both orgs BT. both nearly gone

August 14 + 15 - 1902

154 SEC line Bet 34 + 35 + 26 + 27 east.

I then went South + set Temp. corner at 4079. and doing so found org corner and made one new BT WPINE Stub 20N21 1/2W130
I then Picked up my Random line between sec's 35 + 26 found distance of line to be 3875 + fell 164 South of corner

SEC for canon in 423 corner Var 1° W
I then Picked up my Random between Section 34 + 35 and connected on to Sec come found distance of line to be copied on and fell Page 65 West of corner corner 4

SEC for canon county Record
I then connected line between 34 + 35 South to 1/4 P. and SEC line Bet 26 + 35 east to 1/4 P finished Aug 15 1902

This work was done for the Town of Woodboro for a Road commencing at corner to Sections 23-24-25 + 26. Thence South on Section line to corner of 25-26-35 + 36 Thence East on Section line to corner of Sections 26-27 34 + 35. Thence on Section line to 1/4 Post between 34 + 35

SEC 13-42-58 Sept 8 + 9 - 1902
West from SE cor Var 3.30 E 2. org BT. New Post

44.26 ch fell 309 South of 1/4 P. org. BT
Went E + set 1/8 P { Tam 7 S 43 1/2 E 31
W Pin 6 N 57 1/2 E 16

North from S. 1/4 P Var 4° E
4601 Intersected East end of Spider Lake

7160 Over
7585 fell 531 West of 1/4 P org BT

as E and W. 1/4 Posts are in place
I went South + set 1/8 Post 1896 north of S 1/4 Post on true line between N + S 1/4 Posts. { W Pin 15 N 25 W 28

{ Y " 15 S 33 W 40

I then run E on an intermediate course 2213 ch

copied on page County Record

SEC 19-42-68 Sept 6 1902

West from E 1/4 P long BT Var 3.30 E
8015 fell 63 S of 1/4 P (" ")
N. from West 1/4 Post Var 3.30 E
3990 fell 57 E. of corner. Identified by W Pin BT. (Stump) and oak S 70 W 69 and roots of the other oak and aspen, also org hole where org Post set. Made new Post. Went E and set 1/8 Post

{ W Pin 12 N 59 E 2
W Birch 7 S 48 W 41
connected Var of Range line 4.24
North from
North from SE cor. to 1/4 Post. found corner Var to be 306 Pocket NE

Went to S 1/4 Post Identified by 2-org BT one nearly gone. made new BT and new Post
{ B Pin 10 S 25 W 15
Pin N Var 345 an intermediate course between sec lines

= Sept 10 - 1902 =
3997 intersect E + W 1/4 line 3705 W of E 1/4 P

I then went E 1/4 Post + Run South Var 4° E
4085 fell 244 W of corner Identified by V Pin SW. from cor. W Pin is buried down roots are nearly gone set new Post. found a V Pin standing NE and about 150 ch. from Post which had the good surveyors marks on but it was only 18 inches in diameter and does not appear in govt. notes

found course of this line to be 7.25 E and course of Range line to be 4.24, making the intermediate course between 5.54
I went to N + S 1/4 line + offset west 1.68.64/100 ch which would make my course 5.54 from S 1/4 Post + set center of Section at intersection of connected 1/4 lines

SEC 19-42-6 Conto Sept 10-1902

Y Pine 9 N 53 W 9

W Pine 11 S 88 E 41

I then run N on corrected Van 5.54'

1995. Same distance as 1/8 Post Stands N of
1/4 Post on Range line + set 1/8 Post

W Pine 16 N 12 E 10 1/4

Do 20 N 22 W 4 1/2

I then went west to corresponding 1/8 Post on
Range line + Run E Van 30° E

4074 fell 35 S of 1/8 Post. corrected line meet

2000 ch. was cutting out lots. 1-2 + 3.

for Harrigan Bros

SEC. 13-42-5. E. Sept 8" 1902

West from SE corner Van. 3.30° E

4426 fell 309 S. of 1/4 Post both org B.T. + new Post
I set last winter

Went East + set 1/8 Post Tam 7 S 45 1/2 E 31

W Pine 6 N 57 1/2 E 16

I then run west from S 1/4 P Van 40° E

4661 intersect East End of Spider Lake

7160 over

7585 fell 531 W of 1/4 P. 2 org B.T.

As there is no E or W 1/4 Post I went

South + set 1/8 Post 1896 N of S 1/4 P.

W Pine 15 N 35 W 28

Y " 15 S 25 W 40

corrected line S to 1/4 Post

I then run East from this 1/8 Post on N & S

1/4 line Van 30° E 2213 ch. to get N line

of lot 6. It does not touch the lake

The house built for a homestead is

15 Rods N of N line

H

SEC. 21-42-6. Sept 12-1902

Went to N 1/4 Post. Identified by 2. org BT
Both down + nearly rotted away
Set new Post and made new BT

E cedar 8 N 86 E 15

Run west Van. 40° E

360 Stream 8 links wide runs S

950 leave Tamarac + Spruce Swamp

3460 Intersect Swamp + flowage from Island. I.

3964 fell 60 S of corner. 1 org BT New Post

Went East and set 1/8 Post

W Pine 10 N 67 W 13 1/2

W Birch 12 S 45 E 21 1/2

corrected line East to 1/4 Post

H

SEC 28-42-6 E. 12" 1902

Went to N 1/4 P. Identified by 1 org BT

Dead + nearly down. Set new Post and
made new B.T.S

Y Pine 10 N 66 1/2 E 73

Do 12 S 51 W 52

Run East Van 3.30° E

700 Intersect open Swamp

2050 over

5450 Intersect River Bottom

5696 " Boulder River

5850 over

7938 fell 89 1/2 N of 1/4 Post 2 org BT. Birch

is down made new Post

corrected line W to center of Sec

Went to N 1/4 P. Identified by Stumps of org B.T.S

made new Post + one New BT

W Pine Stump 16 N 78 W 18

Run South Van 3.30° East

1200 leave Swamp + flowage

8190 fell 24 E of 1/4 Post Both org BT. The

distance to N BT is 21 links. not 15

Went N + set center of Sec

over

SEC 28-42-6 cont² Sept 13-1902

Y Pine 15 N 17 W 74 1/2
 do 15 S 81 E 71 1/2

Distance to E 1/4 Post 3881

" " W " 4058

" " N " 4146

" " S " 4044

connected line N to flowage

SEC 36-42-5-Sept 14-1902

Went to NE corner. Identified by the
 Y Pine BT. East one cut. Set new Post
 and Run S Var 3.30 East

4000 could not find 1/4 Post BT as
 burned up. Still S same Var

7900 Intersect lake, no meander

then found roots of BT on
 line running west from corner

in lake & set Post - then

set meander on N + S line from

meander on E + West line and

connected on to same and found

I had been 31 links west of meander

Went N + set 1/8 P. Whole distance

between sec corners is 7955

Set 1/8 Post at 5966 1/4 S of corner

Y Pine 12 N 24 1/2 W

do 7 N 55 1/2 W

Set 1/4 Post at 3977 1/2

Y Pine 20 N 31 1/2 W 85

do 18 S 78 1/2 W 52

Sept 15

Went to NW corner & set Post from

the orig² B.T. 2. aspen is down and

gone. Went S and set Post from

1 orig B.T. Spruce is entirely gone

Run South from this 1/4 P Var 3-45 E

cont
 SEC 36-42-5-Sept 15-1902

3932 full 158 W of corner. Identified
 by 2 orig B.T. all ar down but Spruce that
 stands NW from Post found the Stumps of all
 the other & marks on one. also found the
 orig² Post buried in moss. Set new Post
 and went N and set 1/8 Post

no trees nearer than
 1/4 Post

Run E from this 1/8 Post Var 3.30 E

I found when I had reached hard ground
 I was running on 4.30 E Var changed
 as soon as I left Swamp

2300 ch low Swamp

5690 Intersect Rice creek 150 wide and N

7100 own " " " " W

8125 full 195 ch N of 1/8 Post

connected line west 60.00 ch

(course of Range line is 345 E
 " " West line " 610
 Intersect that course " 452)

W from E 1/4 P. Var 3.30 Sept 16-02

3300 To River Bottom

4250 over River & River Bottom

8167 W boundary 79 1/2 S of 1/4 Post

connected line East 2042 + set temporary

1/8 Post + run South 1964 to 1/8 line

+ set Temp 1/16 Post connected line N

finished Sept 16 1902 at 3 P.M

S.E.C 34-37-9E July 30 1904

East from $1/8$ P. N. of SW corner Var 7°E

4147 $1/2$ feet 143 $3/4$ N of $1/8$ Post

connected most for Road Set $1/16$ Post

no B.T. or Post on P 441 234 county record

East from $1/8$ Post S of center Var 3.10°E

2154 feet 61 S of $1/16$ Post. connected most to $1/8$ P
for Road

July 20, 1904

East corner of SW corner Sec 27E

at 1/4 Sec 27E

measured west for Road East 1/4 Sec

measured on P. Sec 27E southward

East from 1/4 Sec 27E center Sec 27E

at 1/4 Sec 27E East 1/4 Sec 27E

for Road

1878
 1879
 1880
 1881
 1882
 1883
 1884
 1885
 1886
 1887
 1888
 1889
 1890
 1891
 1892
 1893
 1894
 1895
 1896
 1897
 1898
 1899
 1900
 1901
 1902
 1903
 1904
 1905
 1906
 1907
 1908
 1909
 1910
 1911
 1912
 1913
 1914
 1915
 1916
 1917
 1918
 1919
 1920
 1921
 1922
 1923
 1924
 1925
 1926
 1927
 1928
 1929
 1930
 1931
 1932
 1933
 1934
 1935
 1936
 1937
 1938
 1939
 1940
 1941
 1942
 1943
 1944
 1945
 1946
 1947
 1948
 1949
 1950
 1951
 1952
 1953
 1954
 1955
 1956
 1957
 1958
 1959
 1960
 1961
 1962
 1963
 1964
 1965
 1966
 1967
 1968
 1969
 1970
 1971
 1972
 1973
 1974
 1975
 1976
 1977
 1978
 1979
 1980
 1981
 1982
 1983
 1984
 1985
 1986
 1987
 1988
 1989
 1990
 1991
 1992
 1993
 1994
 1995
 1996
 1997
 1998
 1999
 2000
 2001
 2002
 2003
 2004
 2005
 2006
 2007
 2008
 2009
 2010
 2011
 2012
 2013
 2014
 2015
 2016
 2017
 2018
 2019
 2020
 2021
 2022
 2023
 2024
 2025
 2026
 2027
 2028
 2029
 2030
 2031
 2032
 2033
 2034
 2035
 2036
 2037
 2038
 2039
 2040
 2041
 2042
 2043
 2044
 2045
 2046
 2047
 2048
 2049
 2050
 2051
 2052
 2053
 2054
 2055
 2056
 2057
 2058
 2059
 2060
 2061
 2062
 2063
 2064
 2065
 2066
 2067
 2068
 2069
 2070
 2071
 2072
 2073
 2074
 2075
 2076
 2077
 2078
 2079
 2080
 2081
 2082
 2083
 2084
 2085
 2086
 2087
 2088
 2089
 2090
 2091
 2092
 2093
 2094
 2095
 2096
 2097
 2098
 2099
 2100

Section 18 - 38-9-E SEPT 30 1902

Went to west $\frac{1}{4}$ Post. Identified same by Post set by Don and the original map of BT. I offset South $33\frac{3}{4}$ links and am E on old Random made by Don

250 Stream 15 links west

4565 fell $15\frac{1}{3}$ South of center set by Don Dist. given by US Surveyors is 4119 I then proportioned measurement and set $\frac{1}{8}$ Post 23 48 $\frac{1}{2}$ East of $\frac{1}{4}$ P and 23 links N of Random

W Birch 8 S $7\frac{1}{2}$ E 35

Maple 8 N $4\frac{1}{2}$ W 23

copied on Page 249

Went N $\frac{1}{4}$ Post identified by 2 org BT. The cedar is down & nearly burned up. The Pine is dead and org marks nearly gone. Made new BT

Y Pine 14 N 28 W 25

am N West Var 20 W

4100 Intersect creek 20 links wide am NE

4260 over

4666 fell 319 South of corner 4 org BT

Went East & set $\frac{1}{8}$ Post 22 73 $\frac{1}{4}$

West of $\frac{1}{4}$ Post and 183 N of Random

county Hemlock 10 N 67 $\frac{1}{2}$ E 31 $\frac{1}{2}$

recor " 10 S 15 $\frac{1}{2}$ W 20

Went to W $\frac{1}{8}$ Post on E & W $\frac{1}{4}$ line and am N. Var 3:30 E

3788. fell 41 $\frac{1}{2}$ E of $\frac{1}{8}$ Post

Went S & set $\frac{1}{8}$ Post. There is a

Lake on Range line where $\frac{1}{8}$ Post should be so used the $\frac{1}{16}$ Post. and am E Var 3:15 W

2244 fell 52 $\frac{1}{2}$ North of $\frac{1}{8}$ P. Set by Don

conceded line west to $\frac{1}{16}$ Post

and from $\frac{1}{16}$ Post South to $\frac{1}{8}$

I then am South from W $\frac{1}{8}$ Post

on E & W $\frac{1}{4}$ line Var 3 $\frac{1}{2}$ E

4000 could not find an $\frac{1}{8}$ Post

& set line & take out went to

SEC 18-38-9 cont Oct 8 1902

SW corner identified by 4 org BT & then run E Var 30 W copied on Page 249
4406 fell 247 South of $\frac{1}{4}$ Post set by Don org $\frac{1}{4}$ Post gone - went West and set $\frac{1}{8}$ Post at proportional distance between $\frac{1}{4}$ P & SW corner Sugar 12 N 49 E 44 $\frac{1}{2}$ county Recor cedar 7 S 76 $\frac{1}{2}$ E 44
conceded line to $\frac{1}{8}$ Post of Field note finished Oct 3 - 1902

SEC 13. 35-11-E Oct 16 1902

commenced at SW corner. Identified by BT made by myself July 9-1900, and am East Var 10 W at

4000 made diligent search for $\frac{1}{4}$ Post but could not find it. There were 3 men who said they knew where it was, but as no two of them could agree I went on East

7780 fell 46 $\frac{1}{4}$ N of corner. Identified by the stamps of 4 org BT and found the trees with marks on beside the road & also found Post which had been set from org BT

I made new BT Sugar 14 N 60 $\frac{1}{2}$ E 30

copied on Page " 9 S 76 W 47

Went West & set $\frac{1}{4}$ Post at 3890 and 23 $\frac{1}{8}$ links S of Random Cedar Stamp 12 N 10 $\frac{1}{2}$ W 48 358 15 N 86 E 17 $\frac{1}{2}$

I then run N Var 3:30 E

2175 creek 10 wide am SW

5500 center of R.R. track

8000 could not find $\frac{1}{4}$ Post - found

N boundary line 500 ch north

paced from NE to NW corner

and found random was about

right, and as I was running

this line to ascertain if there was

trespass on W $\frac{1}{2}$ SE and as there

were no timber near the line

I quit county road

Survey of Road for Town of Schoepke Oct 19.

commenced at cor to sections 21-22-27-28
Township 35 N R 10 E which I identified
By the sworn statement of George Keeler
as to a Sugar Stump as one of the
original B.T. I drove an iron line for Post
and another at roots of Org. BT Post Iron Pin 1/4
Run N Var 3.30 E BT iron pins by 3 feet

750. RR track

3932 1/2 fell 1/2 link East of 1/4 Post Identified
by 2 org BT. The north is down. Set
new Post + made 2 new BT.

1/8 Post 2 1/4 Post Tamarac 16 N 66 1/2 E 49
Tain 18 N 78 E 33 " 9 S 64 1/2 W 38

Continued line north. Measured from 1/4 P
3958 fell 47 E of corner identified by
the SW BT and Stump of NE BT
Set new Post made 1 new BT

W Birch 8 S 57 W 74

did not use any on tree put marks
The Bark

DEC for correction S to 1/4 P 00619

Var 4° 11'

I then run north from corner to 21-22-25-16
Var 4° SE. county

21625 leave swamp

3988 fell 47 1/2 W of 1/4 Post Identified by
Both org BT. The Elm has grown
to 22 inches marks are covered.

Made 2 new BT. Hem 9 75 E 35

12 West 41 1/2

Run north from this 1/4 P. Var 3 1/2 E at
4000 ch made diligent search for
corner but could not find it
then I run on north side line +
course

7979 fell 239 E of 1/4 Post org BT's

DEC for correction 0360

correction Var going north 5.12

a change of 140 ch Record

= Oct 21st 1902 =

went to 1/4 P. between 10 + 15 run west on
my old Random Var 40° 30' S. also west on same line
5700 Stream 75 links wide runs north

6150 Same Stream

6450 " " copied on Page 303

6650 over "

8090 fell 239 N of 1/4 Post

DEC for correction 0.28% cons of Var 5° 8'
change of 1.38

Went East + set corner to 9-10-15-16

By proportional measurement. after setting
Temp. corner on both S + W + N + S line.

I had to spring N + S line west 45 links and
S + W line N 45 1/2 links

Distance to 1/4 Post N of corner 3989 1/2

" " " S " " 3989 1/2

" " " W " " 4052 1/2

" " " E " " 4038 1/2

Bearing for new corner
W Birch 14 N 40 W 22
Hem 9 S 65 W 36

corrected line S from corner + set 1/8 Post

Spence 12 N 23 1/2 W 99

Hem 9 S 70 E 29

corrected line South to corner of 21 + 22
27-28 for Road.

I then went to 1/4 Post Bet. 27 + 28
and set new Post from org B. Trees
offset 8.92 links + runs N Var 4.25 E
3968 fell 92 links East of ~~1/4~~ corner
corrected line South + set 1/8 Post

Hem 8 N 71 1/2 W 41

finished Wednesday Oct 22 - 1902
county record

Sec. 7-389E Oct 31st 1902

Went to S $\frac{1}{4}$ P. (8th Set Post and made New bearings when surveying Sec 18 Sept 1902) am N Var 4° E

4369 fell 42 W of center Set by BF Don
connected line S to $\frac{1}{4}$ P. also set $\frac{1}{8}$ Post
at 2184 $\frac{1}{2}$ { Dead Tamarac 10 N 5 W 27

copied on page " " 8 S 57 $\frac{1}{2}$ W 30

Went to from S $\frac{1}{4}$ P. and found $\frac{1}{8}$ Post Set by BF Don and am N Var $3\frac{1}{2}$ E

4160 fell 36 W of $\frac{1}{8}$ Post Set by Don
connected line South to $\frac{1}{8}$ Post

Went SW corner found Post \pm 4 org BT
and am north Var 330° E

4052 fell 84 East of $\frac{1}{4}$ Post. Both org BT
connected line South + set $\frac{1}{8}$ Post

242 county { Cedar 12 N 57 W 19 $\frac{1}{2}$
Hemlock 9 S 31 $\frac{1}{2}$ E 18 $\frac{1}{4}$ Record

Given am E from this $\frac{1}{8}$ Post Var $3^{\circ}40'$ W
4695 fell 13 $\frac{1}{4}$ links North of $\frac{1}{8}$ Post. went west
and set Temp $\frac{1}{16}$ Post at proportional distance
Nov 3rd 1902

Sec 33-35-10-E Nov 4th 1902
Went to center of Sec set by Don found
bearings as { Hemlock 11 S 67 W 15
Birch 16 S 19 E 37 $\frac{1}{2}$

Ran East Var 3.36° E copied on page C

4094 fell 163 ch North of $\frac{1}{4}$ Post One org BT
Went west + set $\frac{1}{8}$ Post at 2047

cannot Var 1.15° E 307

Went E $\frac{1}{4}$ P. am N Var $3\frac{1}{2}$ E

1400 Enter Swamp corner

2200 leave "

2500 Enter " record

3650 leave "

3986 fell 25 links west of corner I found
2 org BT. but got surveyors neglected

to give bearings, I set Post from the BT trees
as near as I could and made new BT
Birch 20 N 58 $\frac{1}{2}$ W 26 - Hemlock 20 N 22 E 25 XXX

Sec. 33-35-10-E continued Nov 9-1902

Went South + set $\frac{1}{8}$ Post.

Tam 1 N 36 W 55

Do 7 N 59 W 66

cannot Var 3.15° E copied on page 307

Ran west from NE corner Var 4° E

675 Enter Swamp

4178 fell 217 S of $\frac{1}{4}$ P. 2. org BT.

connected line E 20.89 ch and set $\frac{1}{8}$ Post

Hemlock 9 N 3 E

Cedar 10 S 21 $\frac{1}{2}$ W

Sec for connection 520 connected Var 38° E

West from N $\frac{1}{4}$ Post Var 40° E

8680 creek 10 links wide am north

1986 fell 95 links S of $\frac{1}{8}$ Post Set by BF Don

West from this $\frac{1}{8}$ Post Var 115° E 11

1992 fell 24 links N. of NW corner.

connected line East 20.87 East of $\frac{1}{4}$ Post

Ran South from E $\frac{1}{8}$ P. on N Sec line Var 315° E

4007 fell 87 W of $\frac{1}{8}$ Post

Ran W from N $\frac{1}{8}$ P. on E Sec line Var 30° E

4153 fell W of $\frac{1}{8}$ P. set by Don Went to center

of NE $\frac{1}{4}$ + set $\frac{1}{16}$ Post { Hem 10 S 75 W 8 $\frac{1}{2}$

" " 10 S 50 $\frac{1}{2}$ E 37 $\frac{1}{2}$

connected line N and E to $\frac{1}{8}$ Post on
b/c line

XXX I have since got notes for NE cor
of sec 33, 35-10, and find I have set my
orig Post about 20 links to far N

Sec 19-42-6 Nov 22-1902

Went SE cor + Ran to Var E

4005 fell 141 N of $\frac{1}{4}$ - I had set the Sec cor

and $\frac{1}{4}$ Post last Sept

Went E + set $\frac{1}{8}$ Post

cannot record

{ Pine 9 N 77 W 26

" " 11 S 87 E 37

Copied on Page 164
SEC 22-38-8-E DEC 4th 1902

Went to S.W. corner. Identified by by org BT
N&BT down but mark. Plain. NW BT Mark. were
nearly obliterated by fire. there are two other
org. BT not given in govt Field. Map. Stand
SW + a Birch SE. Set new Post and run north
Var 40°E.

1460 Intersect Lake 3002 over Lake and
1001 East of Meander set new Post from
The NE org BT. a blump now.

The reason I crossed the lake was the meander
on S side of Lake is gone. burned up. I went
South and set Meander Post on true line
Between SW corner and Meander on
North Side of Lake. Distance from SW
corner to Meander is 14.47 ch govt
Field notes gives this distance as 22.17 ch

Bearings for Meander } Birch 8 N 89 E 66
 } other timber dead

I found shortage to be 7.70 ch. I proportioned
distance and set 1/8 Post 1.16 ch S of Meander
and 13.31 N of SW corner

comity { map 9 N 25 E 34 recd
 } Birch 10 S 4 1/2 W 22

Run Random line E. to Lake Var 4°E
distance about 30 chains

SEC 10-40-6 DEC 7 1902

went to West 1/4 Post. Identified by 1 org BT the
Space is Standing Pine is gone

Run East. Var 8.30 E
1955 Stream 75 links wide runs South.

2168 Over Stream

7809 Intersected SEC line at Post. Identified
by both org BT. but they are nearly gone.

Set new Post and made 1 new BT

{ N Pine 11 N 75 W 26 1/2

no other live trees near

SEC 10-40-6-E cont. DEC 7 1902

Went South 1/4 Post identified by remains of
2 org BT. set new Post and made new BT

{ W Pine 9 N 88 W 23

{ " 8 East 30

Started N Var 1.30° E. James Canty said he had
run through with Post at camp + 730 was OK
1300. I offset West 45 links + changed my course to S. 30 E

= DEC 8 =

3650 leave Swamp which I entered at 1176 ch
7837 Intersected N boundary 19 links East of Post

I identified by 2 org BT. both OK

SEC for correction 2.50 ch of Var 3.15

Set new Post and run W from N 1/4 Post
Var 3.30 E

4136 fell 84 links N of corner 2 org BT. corner is
nearly gone. set new Post. Went East +
set 1/8 Post { Birch 9 N 25 E 34
 } do 7 S 32 W 11

South from NW corner Var 5° E

3983 fell 1/8 of 1 link West of 1/4 Post

Went N + set 1/8 Post { Birch 8 S 78 W 5 1/2

{ W Pine 22 S 88 E 88 1/2

{ W Pine 22 S 88 E 88 1/2

I then set center of SEC { Map 5 N 30 E 4 1/2
 } Book 9 S 29 E 29

Post to N 1/4 Post 3930

" " S " " 3907

" " E " " 3896 1/2

" " W " " 40 12 1/2

2006 1/2 West of center set 1/8 P { Tam 9 S 47 1/2 E 5 1/2
 } do 10 S 44 W 55 1/2

1953 1/2 N of center set 1/8 P { W Pine 17 N 43 E 11

on S + W 1/4 line } do 14 S 57 W 27


Went to W 1/8 Post + Run N Var 4.15 E

3938 fell 14 E of 1/8 Post

Went to N P. on W SEC line Var 4.15 E

SEC 10-40-4 Dec 10 - 1902 cont

Went to N¹/₈ P. on west. sec line + Run E Var 4¹/₂ SE
4046 feet 99 N of ¹/₈ Post = went west + set ¹/₁₆ P
in center of NW ¹/₄. Tam 8 S 20 W 12

connected line E + S to ¹/₈ Post
cut out SE NW bar  A Jay Balgon.

SEC 34. 41-6-E Dec 11 1902

Went to E ¹/₄ P. identified by 1 org. B.T. The Birch
Aspen is gone. Run west Var 3:30 E

7793 feet 120 N of ¹/₄ P. which I identified by both
org B.T. But as they were nearly obliterated
I had new B.T. W Pin 14 S 82 E 20
DO 11 S 82 W 27

set new Post and run S. Var 4⁰/₂ E

2594 feet 44 W of meander two org B.T.
SET new Post. I then went to meander
on E side of Lake on ¹/₈ section line
and Run E Var 3:30 - E | set Post 2 org B.T.

543 feet ¹/₂ line N of ¹/₄ Post both org B.T.
SET new Post + Run N Var 4⁰/₂ E

7911 feet 97 W of ¹/₄ P. in Lake found both
meanders + set ¹/₄ P on ice at proportional
distance between meanders

Went S + set meander of SEC 34 Pin 16 N 60 E 10 ¹/₂
DO 18 S 20 W 7 ¹/₂

Dist to E ¹/₄ Post 3921 ¹/₂

" " W " " 3871 ¹/₂

" " N " " 3947

" " S " " 3964

connected line S to ¹/₄ Post and west to ¹/₈ P
1955 ³/₄ west of center set ¹/₈ Post

W Pin 10 N 40 ¹/₂ E 18

" " 7 S 51 E 10 ³/₄

Run S from this ¹/₈ Post on an intermediate
course between west S ¹/₈ line + N + S ¹/₄ line
2500 measured Lake = finished at 420 Dec

12-1902

SEC 30-38-10-E Dec 16-1902

Went to E ¹/₄ P. identified by Post I set two
years ago and from org B.T.

Run west Var east needle
2000 enter Swamp needle shows 1⁰/₂ W
4500 over corner on Pass 347 " "
5000 enter " " "

8115 feet 32 ¹/₂ S of west ¹/₄ Post " " BT and
Post new BT (Spr 6 N 82 ¹/₂ E 35

Went to N ¹/₄ Post 1 org BT set new Post and
Run South Var 5⁰/₂ E as I was told this was ok
7933 feet 220 E of ¹/₄ P. Identified by Stumps of
org B.T. line Stump has B.T. Birch nearly gone

Went N + set center of Sec { Spr 6 N 35 W 19
Tam 6 S 1 ¹/₂ E 11

Dist N ¹/₄ Post 3605

" S " " 4328

" E " " 4024

" W " " 4091

Went west + set ¹/₈ Post 2005 ¹/₂ west of center

" S " " " 2164 S " "

West ¹ / ₈ P.	Tam 9 N 7 ¹ / ₂ E 06
E + W ¹ / ₄ line	" 6 S 1 E 13
S ¹ / ₈ P	" 7 N 88 E 21
N + S ¹ / ₄ line	" 9 S 25 W 34

Went to SW ear identified by pins + Birch BT
run ~~west~~ North Var 3⁰/₂ E

4028 feet 14 W of ¹/₄ Post went South
+ set ¹/₈ P { Tam 7 N 85 W 48

corner " " 7 S 12 W 33 record

Run N from west ¹/₄ P. Var 3 ¹/₂ E.

3973 feet 150 W of ear 3 org BT

Went South + set ¹/₈ Post; no trees near
found. Streams on this line as given
on US field notes, large hay meadow
and chains cant

SEC 30-38-10-E Cont Dec 18th 1902

Set new post at NW corner farm E. Var ^W 45
 4127 fell 18 links N of $\frac{1}{4}$ P. West: west and
 Set $\frac{1}{8}$ Post. WP. 16 S 50 $\frac{1}{2}$ E 59
 at 4028 $\frac{1}{2}$ W of $\frac{1}{4}$ P. Copied on Post
 made new T for N $\frac{1}{4}$ P. WP. 18 S 11 W 42

no other men

Run N from W $\frac{1}{8}$ P. on E + W $\frac{1}{4}$ line Var 3.30 E
 3815 fell 21 $\frac{1}{2}$ W of $\frac{1}{8}$ P. corrected line
 South 2000 ch 347

Run S from W $\frac{1}{8}$ P. on E + W $\frac{1}{4}$ line Var 3.15
 4191 fell 53 W of $\frac{1}{8}$ P.

West from S $\frac{1}{8}$ P. on N + S $\frac{1}{4}$ line Var 6° W
 4101 fell 16 S of $\frac{1}{8}$ P. West E + set $\frac{1}{16}$ P in
 center of SW $\frac{1}{4}$ WP line 10 N 75 E 12
 " " 18 S 3 W 9

corrected lines E + N from $\frac{1}{16}$ P
 finished DEC 19th 1902

county record

overlooked.

West from S $\frac{1}{4}$ P. Var 10° W
 4102 fell 113 N of corner - West E + set
 $\frac{1}{8}$ P. Rich 11 N 30 W 13) 2005 $\frac{1}{2}$ West
 of S $\frac{1}{4}$ P

INDEX.

Page.

2
 5
 6
 7
 9
 14
 18
 22
 27
 34
 37
 43
 45
 49
 53
 53
 54
 56
 60
 62
 64
 67

117

INDEX.

Section.	TOWNSHIP.		RANGE.		CITY, OR VILLAGE.	ADDITION.
	N.	S.	E.	W.		
27	38		10			
18	36		9			
14	36		8			
26	39		5			
36	39		10			
28	37		8			
6	37		9			
22	36		6			
15	"		"			
11	"		"			
+ others						
28-27	38		10		Road for town Pelicans	
14-15	36		9		County	
	38		10		Town Gagen	
	38		10		Mario	
	36		10		Park Commissioners	
	36		9		Town of	
23	35		11		Jennings Road	
"	"		"		Road	
34	39		7			
25	38		7			
28	36		11			
29	40		8			
29	40		5			
34	43		5			
33	43		5			
15	42		5			
13+24	38		10			
15-16-22	38		11			
10	39		7			
11	"		"			
2	"		"			
36	40		"			
7+6	40		"			
22	36		11			

and 4th section in

5 days
5 days
5 days
1
2
11

INDEX.

FOR WHOM SURVEYED.	WHEN			Page.
	Day.	Month.	Year.	
Menasha W W Co	23	February	1901	2
Jasa Cohen	4	march	"	5
Du Pont	12	"	"	6
Charles Ahlborn	28	"	"	7
James Donnelly	2	APRIL	"	9
FS Robbins	9	"	"	14
SS Miller	22	"	"	18
Town of Woodbano	28	"	"	22
"	"	"	"	27
"	4	May	"	34
Town of Sugar camp	6	June	"	37
Pelicans	8	"	"	43
Oneida Co Sheriff	19	"	"	45
county Pays part	26	"	"	49
"	29	"	"	53
"	30	"	"	55
Town of Schaeffe	9	July	"	56
"	12	"	"	60
for Town of Schaeffe	"	"	"	59
Ross Lumber Co	23	"	"	63
Milton + Glenn	24	Aug	"	64
Curlight + Russell	3	Sept	"	66
Mrs Bachass	4	"	"	67
"	8	"	"	72
Wd Navigan	10	oct	"	73
"	14	"	"	79
"	16	"	"	81
Woodruff + McGuire Co	24	"	"	82
Just KOLD	31	"	"	84
Ross Lbr Co	6	NOV	"	95
"	11	"	"	101
"	15	"	"	102
"	17	"	"	107
"	18	"	"	108
Mansur Rayner + Graf	28	"	"	117

INDEX.

Section.	TOWNSHIP.		RANGE.		CITY, OR VILLAGE.	ADDITION.
	N.	S.	E.	W.		
33	35		11			
28						
25	30		7			
24	"		7			
1	36		8			
31	38		9			
11	35		8			
36	38		8			
18	36		9			
15	36		9		Brusoe Hynes et al	
24	42		5			
1	"		5			
22	37		8			
23	"		8			
23	"		8			
26	"		"			
3	38		6			
9	"		"			
9	40		8			
17-18-19						
20-21-2	39		8			
3+10	38		9			
25-26+36	36		7			
19	42		6			
13	42		5			
21	42		6			
28	42		6			
36	42		5			
18	38		9			
16	35	10	11			
580 line	35	27-28	21+22-15+16-9+10-10+15			
"	7	38	9			
"	33	35	10			
"	19	42	6			
22	38		8			

INDEX.

FOR WHOM SURVEYED.	WHEN			Page.
	Day.	Month.	Year.	
August Applocamp	3	Dec	1801	119
	9	"	"	122
Ross Lbr co	19	"	"	124
	22	"	"	127
Vineent Gnat	26	"	"	128
Menasha w w co	7	Jan	1902	129
Milo Johnson	9	"	"	130
W. W. Co & Robbins Lbr co	13	"	"	130
Jessie Cohen	14	Feb	"	131
Brusoe Hynes et al	17	"	"	132
Harrigan	24	"	"	135
	25	March	"	137
	1	April	"	142
Town NEWford	20	"	"	144
		"	"	143
Douglas & Fetke	23	"	"	146
Anton Carlson	29	"	"	146
Jawkey Lbr co	10	May	"	147
Oleg Burg et al	19	"	"	150
Johnson & Mullb.	4	June	"	151
Town of Sugar Camp	17	"	"	152
" " "	19	"	"	152
" " Woodboro	15	Aug	"	153
Harrigan Bros	6	Sept	"	155
" " "	8	"	"	156
" " "	12	"	"	157
" " "	13	"	"	157-8
" " "	14	"	"	158-9
Menasha w w co	1	Oct	"	166-7
Wisconsin Verner co	15	"	"	167
and 9+16 Town Schoofke	18	"	"	168-9
Menasha wooden war co	31	"	"	169
Campbell & Cameron	8	Nov	"	170
Harrigan Bros	22	"	"	171
Henry Wulker	4	Dec	"	173

INDEX.

Section.	TOWNSHIP.		RANGE.		CITY, OR VILLAGE.	ADDITION.
	N.	S.	E.	W.		
10	40		6			
34	41		"			
30	38		10			
34	37		9			

4044
~~6~~
 24264
~~24264~~
 266904

2670
 2985
~~285~~

INDEX.

FOR WHOM SURVEYED.	WHEN			
	Day.	Month.	Year.	Page.
Afay Bolger	6	Dec	1902	172
"	12	"	"	173
Menasha, wooden weo Town of Pine Lake	16	"	"	175
	30	July	1904	160