

Dr. VASMAN # 4

36-36-7

31-36-8

D. H. Vaughan
opened - DEC 22-1902
all new B.T. Net on 4th E
closed JULY 17-1904

420 y Riv 14N 85W 23

Book 4

4

SEC 4-36-9-E DEC 23+24-1902

copied on Page 193
 Went to NE corner (3 ang BT + Post)
 Run west var 3:30 E
 4042 full 5 links S of $1/4$ P. both ang BT + Post
 Went E + set $1/8$ P. (maple 11 N 45 W 5
 W Birch 8 S 6 E 25
 connected line East to corner

Went to the E $1/8$ P on N see line + run S var 40° E
 2183 full 153 East of $1/16$ Post set by barn
 connected line N to $1/8$ P.

Run E from this $1/16$ Post var 230 E
 2033 full 3 $1/2$ E of $1/8$ Post set by barn and see line
 connected line west to $1/16$ Post

COUNTY REC'D

Run N from this $1/8$ var 3:30 E
 2174 full 97 W of Sec. corner

SEC 4-36-42-5-E DEC 31-1902

Run E from NW cor. Post set from day BT, in
 S.E. 15-1902 by myself - Page 158 Book for '02

475 alder Lake

470 over alder Lake

1100 To alder Lake

5575 over Lake + flayage

8119 full 320. N of corner set from ang BTs
 Went West + set $1/8$ P. and Bank of stream
 in flayage. Red oak 16 S 1 W 820

old bearings gone no others near
 connected line west + set $1/8$ P. in lake
 (B. oak 16 S 73 W 183
 no others near

Line as connected Reads as follows

490 To Lake

850 over "

875 1 Co House

1150 To Lake - from 875 to 1150 show stumps
 month 1250 on a line run

4 SEC 35-425E January 4-1902

Went to SE corner identified by org BT
and new Post set by me in Sept 1902
Run west Var 3 3/4 E

4000 ft. 25 links N of 1/4 Post identified
by the two org BT stamps. The Spruce
is nearly all gone Tam not much
better. Made new BT & W.P. 12 N 62 W 15

Still west Var 3.30 E

5475 to Lake found Roots of W Pin which was the
org Meander corner also Roots of NP
which was org BT found org line an
W Pin near 1/4 Post and an W Pin near
Meander corner. Set new Post &
Made new BT. W Pin 12 S 88 1/2 E 41 1/2
W do 8 S 38 E 12 1/2

Chained west 25-25 an run north to N Shore
of Trout Lake could not find meander or 1/4 P
& then chained N 3 1/2 Pocket compass
& found a small Lake near Shore of Trout
which line passes through. By taking measure-
ment from Shore of Trout Lake & found distance
1000 ch more than govt field notes case for
and am satisfied the meander must be on
north Side of Small Lake. This small Lake
is not mentioned in govt notes will look
it more tomorrow. Jan 7 1903

Went to NE corner and am west on old with
Pocket Compass

4023 1/4 Post.

8060 found Post some one had set for corner
org BT are gone Swamp is burned over.

came South and found the west BT for
meander on N Side of Small Lake. Set new
Post and made new Bearings Tam 4 S 84 W 3 1/2

Chained N 262 ch + set 1/4 Post no org BT could be
found made new bearings } Tam 5 N 56 E 64
do 5 S 46 W 174

5 SEC 35-42-5E cont January 7 1903

Then run South from meander on Small
Lake on a line with meander + 1/4 Post Var 3 1/2 E
980 over Small Lake

1122 to Trout Lake + set Meander } Tam 8 N 12 1/2 E 10 1/2
do 12 N 66 W 55

6
SEC 25-42-5 E January 6 1903

went to B W Corner + Run N Var 330°

1012 interest Lake

1027 fell 1/2 link E of org meander

identified by the oak stump. there is
about 7 feet flowage on Lake at present time

Set meander on high bank 968 north of corner
and 44 links from flowage + 598 of me

□ = = = = = □

SEC. 30. 38. 9 E Wednesday January 14" 1903

Went to E 1/4 Post and Set by Dorr found

He had made new B.T. + Spruce 6 S 82 1/2 W

copied on page 264 Tam 6 S 83 E

Run South Var 30°

3988 fell 13 links west of corner Set by Dorr
in open marsh no B.T.

Went N + Set 1/8 Post at 1994 and

6 1/2 links E. of Random Spr 4 N W 2 1/2

Tam 5 S 40 E. 12

Run west from this 1/8 Post Var 3.30

leaves open Swamp

1440 leave open Swamp County

30 75 interest Lake.

45 66 fell 80 1/2 N of 1/8 Post in Lake

& then went to S 1/4 Post Set by Dorr

and Run north Var 30° W

1500 interest Lake

Record

4000 found Dorr had set center in Lake

& found his B.T. on E bank of Lake

& then went to E 1/8 P. on E + W 1/4 line set

by Dorr and run E Var 40° E

400 enter open Swamp

2196 3/4 fell 44 3/4 S of 1/4 Post = went west

and set Talley 1 N 10.1500 links. Set instrument

up again to 1/8 Post lined up on Talley Stake

and run west Var 50° 06

2050 interest Lake.

2196 3/4 set center of sec on 10

OF FIELD notes

SEC. 30-38-9 E Jan 15-1903 cont

copied on page 264 county record.
& then picked up my N + S 1/4 line

and at 3900 found I had fell 55 E of

center = went S + set 1/8 Post on on 10

& tied my E + W 1/8 line onto same

as shown on preceding page.

went E and corrected 1/8 line from

Talley 2 E to open Swamp

□ = = = = □

copied on page 243

SEC 8. 38-9 E Jan 16" 1903

Went to W 1/4 identified by Post + both org B.T

and run N on Dorr's old random Var 330° E

1992 found 1/8 Post 34 1/2 links W of Random. no

B.T., Post marked 1/8 S

3994 fell 75 E of corner identified by the Birch

Spruce I gave made new B.T.

{ Hem 10 S 64 1/2 E 15

Run E from NW corner Var 40° E

500 enter Tamarae + cedar Swamp

3200 leave

4174 fell 2 links N of 1/4 P. both org B.T.

corrected W + set 1/8 Post at 2087.

" " to see corner

Spr 12 N 84 1/2 E 11

Tam 12 S 11 W 10

Run S from N 1/4 P. Var 40° E

3990 fell 35 1/2 E of center set by B.F. Dorr

The bearings are { Hem 12 N 16 1/2 W 23 3/4

W.P. in 20 S 20 W 10

went N and set 1/8 P. { Birch 11 N 21 E 21

{ Dorr 12 S 1 1/2 W 14 1/4

= Jan 18 - 03 =

Run west from this 1/8 P. Var 40° E

4111 fell 65 S of 1/8 Post used old Post Set by

Dorr as I found it correct but no B.T.

Made new Bearings { Birch 11 N 33 W 10 1/2

cedar 10 S 6 1/2 W 9 1/2

County Record

Over □

888C-8-38-9-8 cont. January 19-1903

Went to 1/8 Post west of center set by Darr
and run N Var 40° E

3993 fell 6 links E of 1/8 Post.

Went S and set 1/16 Post in center of NW 1/4
county record. cedar 14 N 63 E 19 1/2

Do 8 S 7 1/2 W 22 1/2

connected lines E + S to 1/8 Post

□ □

□ SEC. 6-42-7-8 □

Went to Meander on Town Line 38.95 W
of NE corner Identified same by both
orig. B.T. Run East Var 30° E

1083 fell 10 links N. of Meander Identified by
orig BT + Stump Set new Posts to both
meanders connected line west

& then went west and found meander on
west side of Lake Identified by both orig
BT set new Post lined across Lake Var 2° 50' E
found distance across lake to be 2869

got measurement is 2860 proportioned
distance and set 1/4 Post on 70 10 5/4 west of
meander and run South Var 7° 30' E

200 Shore line is 25 links East

900 " " " 50 " "

1200 " " " 75 " " leave lake

3400 intersect Lake + set Temp Meander P.

8500 set Temp 1/4 Post on ice

Went to Meander on west sec line

2026 N of SW corner, Identified by
Stumps of orig BT, set new Post and
made new BT

Book 18 N 21 1/2 E 72
W Birch 10 S 62 W 41

Run S 30° E

200 Shore line 25 links W

400 " " " " " "

450 cross Shore line

700 Shore line 25 links East

SEC 6-42-7 Jan 25-1903 cont 9

800 intersect Lake

2000 Shore line 2000 West

4639 over Lake fell 3 1/2 E of Meander

DEC for connection 784.00

connect Var 2° 30'

Went N and set SW corner on ice

15 3/4 links W of Random and at
20.25 1/4 there is only 2 links difference
Between got " " Chain + corner

Jan 1903

Survey of Islands in Sec 7-42-7

Commenced at meander on South
South Side of Lake 1858 N of SW cor of Sec 7
This meander was identified by

Survey of Islands in Sec 7-42-7-E
as the meander on South side of lake
and the corners to 7-12-13 & 18 are
gone I commenced meander on South
Side of Lake 5385 ch north of corner to
Sec 7-12-13 & 18 and run South Set instru-
-ment on Ridge & line in between the
meanders found distance to be 460 - var 30
gout measurement is 457 This South
meander was identified by both orig B.T.
West one is shown Still South var 30 E
300 shore line 150 west

2000 " " 150 "

2500 " " 500 "

3000 " " 600 "

3400 " " 650 "

2100 over Lake could not find meander
country is burned over timber is all
gone at 1858 South of Lake looked for
corner but could not find it. Timber
is all gone

2500. Meade showed 130 E

6300 intersect Boulder Lake. There is no
indications of a meander There has
been a flowage on this lake timber
near shore, all dead & burned

7245 over Lake found one BT for meander
x Pin 14560 E 27 as I have not the
the field notes I set Terry Post as near
as I could and found I had bell west
110 links west N & set meander on
South side of Big crooked Lake. Said to
1858 North of corner to 7-12-13-18 and
on true line between meander on N side of
Big crooked Lake said to be 4928 N of SW corner

12 Survey of island in Sec 7-42-7 Jan 27

of SEC 7 and meander on South Side
of Boulder Lake } WPine Stump 34 S 13 1/4 W 39
do " " " 33 5 E 41
I find the distance N from this meander
across Big crooked lake 3106 good chaining is
3670 an overrun of 36 links
D&C for connecting this range line
7242 ch is 1.52
connecting bar 322

Notes should read as follows
North corner from meander on S side of
Boulder Lake
1942 over Boulder Lake no meander
no corner
40.03 Set Meander on S side of Big crooked lake
WPine Stump 34 S 13 1/4 W 39
do Stump 20 S 35 E 41
4300 Shore line back west
4500 " " 650 " " and out lot to lake
4700 " " 500 " "
5200 " " 150 " "
6900 " " 125 " "
7242 over lake at meander

January 28 - 1903
Set instrument at meander on S side of Lake
on Range line BET 7 & 12 turned telescope
on meander North on true line. Set flag
on South End of island located in NWSW Sec
7. Turned telescope on same Vernier read
North 38° East Chained over lake on ice and
found distance to flag 9,300 ch
Set all gallery meander post 4x4 inch
and 3 1/2 feet long one foot in ground
and marked A M C Bearings trees are
WPine 11 N 14 1/2 W 11
do 11 N 31 1/2 E 24 1/2
Thence north (along west shore) 41 W 550 ch
" " " North ") 82 E 300 "

Survey of islands cant Jan 28-1903

Thence South (along East shore) 36 E 350 ch
" " " South ") 39 W 224 "
The distance to South Shore is 8.25 ch
and average depth of water is 4 feet
The distance to north shore is 1850 ch
and average depth of water is 10 feet
The distance to west shore is 8.75 ch
and average depth of water is 8 feet
January 29 " 1903
I again set instrument at same
meander on Range line on S shore of
Lake between with telescope on true line
BET 7 & 12 and placed flag on island
in N E S W at extreme South end. then
turned telescope on same Vernier
read N 43 E chained across lake lake
on ice and found distance to be 3183 ch
I set meander post at flag 4x4 inch
WPine and marked A M C and made
Bearings WPine 16 N 71 W 22 1/2
do 14 N 53 W 47
Thence North 77° W 100 ch
" " 72° W 275 "
" " 37° E 150 "
" " 60° E 325 "
" " 27 20 W 42 1/2 ch
from meander on ^{100 feet} S shore S 34 E 2200 ch
" " " " Island to S " S 12 W 2350 "
These ^{points} are the nearest mainland to island
from meander
from N W point of island to nearest
point which is N 51° W 1250
The next nearest point is N 10° W 1375
and is the extreme East point of Lot 1 SEC 7
The average dept of water from island to
shore South is 20 feet and the average depth
of water from N point of island to main
shore is 15 feet
Fins
T

S&C 23-38-9 E Feb 5-1903

copied on Page 250 county record

went to N¹/₄ Post in road found one
BT which had been grubbed out found the
place where it stood and set Post in Road
and made New bearing Telephone pole, N 43³/₄ E 37
Run west 1/2 W 3¹/₂ E

4006 fell 1300h N of cor 2 on BT + Post
went East and set - 1/8 P. at 2003

of fence note { Tam 16 S 86 W 12¹/₂
do 14 S 11 E 5

Connected line East to 1/4 P. in Road

H =

SEC 25-37-8 E Feb 9-1902

went to meander on left Bank of
River, identified by the North
org B.T. Stump Set small stake and
run E on offset of S of 10 links
3800 Set line stake and line stake
at 2854. SE cor is gone. will
wait for snow to go down before
I go on with work

Posted on Page 150

county record

Sec 9 38-6 E Feb 11-1903

Went NE corner Identified by Iron Pipe
for corner Post + B.T. Made by myself in last
fine Run west Var $33^{\circ} E$

2473 intersect Kambashin Lake

2765 over "

3850 fell $45^{\circ} N$ of $1/4$ Post Identified by
the Birch B.T. found the spurs down and
rotten marks nearly all gone. Set new
Post and made new B.T.

Copied on
Page 58
county
record

Line 8 N $10\frac{1}{2}^{\circ} E 30$

W line 10 N $10\frac{1}{2}^{\circ} W 32$

NO green timber south of line

until you cross the lake.

I shall try + find meanders E of $1/4$ Post
do not think the U.S. Surveyors ever run a
line from meanders E of $1/4$ Post. E to Sec cor
D.E.C. for connection if meanders cannot
be found 11.82. Change course $5^{\circ} 33' = 10'$

after diligent search for meanders on both
sides of Lake & was unable to find them as the
Lake has been flowed + timber burned
and connected line from $1/4$ P to NE corner
Set $1/8$ Post equidistant between $1/4$ P + "

oak stump 12 N $33\frac{1}{2}^{\circ} 33\frac{1}{2}$

W Pin " $40^{\circ} S 46\frac{1}{2} W 58$

The distance from NE to Lake is just about as
given in US Field also distance across
Lake

Sec 9-38-6 cont February 11-1903

South from N $1/4$ Post Var $3\frac{1}{2}^{\circ} E$

175 intersect Lake

1025 over " and up a steep hill

6180 intersect Lake

6625 over " + up a steep hill

7966 fell $2\frac{1}{8}$ ch W of $1/4$ Post Identified by
The white Pine stump of orig. B.T. The
R oak is all gone but the roots
Set a 4×4 oak Post and marked
the W Pine stump over as the orig. marks
are nearly gone.

D.E.C. for connecting line 2.75

change course $1^{\circ} 35' = 5^{\circ} E$ connect Var

Went to E $1/4$ Post which I set last June by
Proportional measurement between meanders
and NE corner. Run west Var $6^{\circ} E$

3030 creek 15 links wide and N. 100 to N to Pond

7788 fell 264 N of $1/4$ Post Identified by
The stump of The spurs which stood SW of
Post. Set new Post + made new bearings

W Pine Stump 16 N $77\frac{1}{4} E 49$

Tamarac " 14 S $76 W 37\frac{1}{2}$

Went East + set center at intersection of
connected $1/4$ lines { N Pine Stump 20 N $75\frac{1}{2} W 16$
W " " 24 S $82\frac{1}{4} E 38$

Copied on Page 58 county record

Distance to E $1/4$ Post 3830

" " W " " 39 58 3910

" " N " " 37 06

" " S " " 42 60

1858 N of center set $1/8$ Post { W Pine 14 N $65 W 88$
" " " " 17 S $4\frac{1}{2} E 67\frac{1}{2}$

connected line N from center to Lake

" E " " " $1/4$ Post

1955 E of center set $1/8$ Post { W Pine Stump 36 N $83 E 39$

do do 22 S $85 W 44$

Runs from $1/8$ B.T. N $1/4$ P to NE cor Var $5\frac{1}{2} E$

500 opposite point on west side of lake + E of $1/4$ Post
Lake South of this point is 700 ch wide

commenced again at E 1/4 Post changed my course 74's medd Shows 13° W Var
 7900 leave swamp
 9006 intersect true line bet NW + SW corner
 9030 fell 7 1/2 links South of Post
 cancelled line East from 6000 to 1/4 P
 went to SW corner and run East Var 1.36 W
 2425 8 Pines 26 in offset N 3 links
 9143 fell 93 links S of corner including offset
 went west + set 1/4 Post at 4571 1/2
 " N to E + W Pine 30 N 10 1/2 E 64
 copied on Page 326 W Birch 11 S 55 1/2 E 17
 Went to E + W 1/4 line + set center at equal distance between Declines The west 1/4 P
 stands 24 links west of a true line
 bet SW corner and meanders on lake
 So as to get an intermediate between E + W
 1/4 Sec lines I set the center of as stated
 center { W Pine 17 N 12 1/2 W 50
 of sections { W Birch 14 S 3 E 25
 Dist to S 1/4 Post 4124
 " " N " " in lake
 " " E " " 4503
 " " W " " 4527
 2263 1/2 west of center set 1/8 Post
 { Tam 9 1/2 S 11 E 4 1/2
 { DO 9 1/2 S 11 E 4 1/2
 North
 Run South from this 1/8 P Var 35°
 which is an intermediate course
 between 1/4 line + west Sec line
 1682 intersect lake + set meanders
 { then 9 S 77 E 5 1/2
 { W Pine 12 S 11 E 4 1/2
 finished at noon
 Feb 24 cancelled E Sec line N
 from 1/4 Post
 county record

Copied on Page 150
County Record

went to N 1/4 Post. Identified by the B Pine
 org B.T. ashen gave Pine is a stump 4 but high
 Run South Var 4° E
 4358 fell 7.27 E of 1/4 P. Identified by
 Both Stump of org B.T. set an iron
 Pin for Post + remarked org B.T. Stump
 cancelled line N + set center of Sec
 { W.P. Stub 12 N 76 W 47 1/2
 { no other means
 Set 1/8 P. S of center { N Pine 8 N 25 1/2 W 163

FIN

Survey of an island in Sec 17
 Town 30-Rang's said Island is in
 Squirrel Lake + in SW 1/4
 Commenced March 25 1903
 M.C. Fuller and Lynn Vaughan
 were my assistants
 To get the course of Section line I com-
 menced at meander on Squirrel Lake
 between sections 8 and 17 and run
 west var 5° E 8.89 fell on the Post at
 Section east to sections 8-8-18-19
 This corner and meander corner
 were both identified by both org B.T.
 Set new Post at each corner
 I then set my instrument (C.W. + J.E.
 Gurley transit 4 1/2 inch made in
 perfect adjustment) at meander from
 where I first commenced adjusted
 same on a Var of 3° E
 I then placed flag on NE Part of island
 turned telescope on same. Service road
 S 35.30 East copied on P 12 county record
 130 intersect lake
 600 show line 30 links west
 1000 " " 75 " " "
 1200 " " 60 " " " and there

22 Survey of island in Squirrel Lake continued

Shore line runs S 45° West
 43.61 over Lake to shore of island bluff bank
 44.08 to Flag and let meander past
 a cedar 4x4 inches 3 1/2 feet long
 placed one foot in ground and
 marked it A M C From which a
 Hemlock 12-in base S 74° 20' 1/2 link
 a Birch tree 16 in base S 32° E 16 links

Thence S 45° East 400 ch
 " " 20 " 500 at this point

The East Shore of Lake at the nearest Point
 to South 87° East 13.75 chains

Thence S 66 1/2° West 1100 ch

" " 73 1/2 " 950 "

" " 42 " 400 "

" " 21 East 200 "

" N 84 " 600 "

" S 50 (51) " 900 " at this point

The meander past on East side of Lake
 and between Sections 17+20 stands
 South 48.30° E 2400 chains

Thence " 50° W 100

March 27 - 1903 =

" South 70° West 350

" North 82 1/2 " 500

" " 55 " 600

" " 48 " 700 House 10x16 400 East

" " 26 " 300 from this point

meander bet 17+18 to nearest point on West
 Shore of Lake is N 64° W 1300 chains

Thence North 31° East 1100

" " 9 " 200 From this point

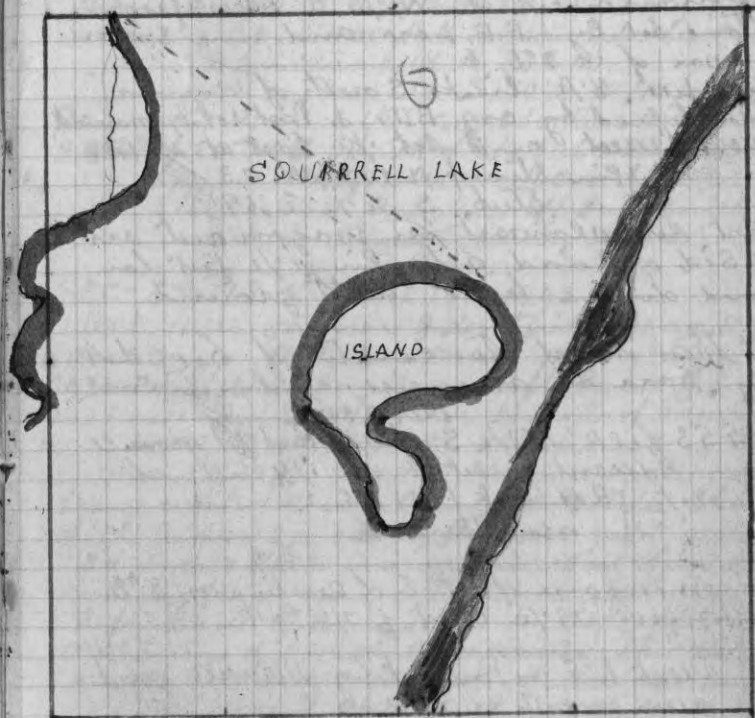
The meander bet 17+18 is North 35° West 2495 ch

Thence North 70° 30 East 650

" " 46.30 " 800

" South 88° 00 " 273 to place of beginning
 at meander on Island

SEC 17-39-6 - East March 27-1903



Holt's Rock Co. 1900

24 SEC 9. 36 - 9 E March 30 1903

commenced at N 1/4 P. identified by Stone set by B F Don and run E on a var of 2° E E

5688 feet 8 1/2 links South of corner identified by org B.T. & Post set by manuell went west and set 1/8 Post at 2844
 { WPine Stump N 143/4 W 73
 W .. Blue S 54 1/2 E 69

Post sets almost in wagon out on N Side of Road, a dry pin 1/2 feet long and driven level with ground

I then went to center of Sec set by Don or manuell, and run East var 3.30° E

4953 feet 18 1/2 S of 1/4 Post set manuell went west & set 1/8 Post at 2476 1/2 { Rod oak 18 N 4 E 22
 no others

Run N from 1/8 P E of center var 8° E
 4147 feet 79 1/2 West of 1/8 Post

went to E 1/4 Post set by Manuell and run north var 3.30° E

4094 feet 203 West of corner went South & set 1/8 Post

{ WP. Stump 30 N 29 E 25 1/2 X
 W.P. .. 11 S 30 W 9 1/2

went to 1/8 Post set by manuell N of center and run East var 230 E

5320 feet 108 S of 1/8 Post. connected line west & set 1/16 P
 { WPine 14 N 71 1/2 E 68
 do 14 S 21 E 57

connected line South to 1/8 Post then East to 1/4 Post then N to 1/8 P finished April 3 - 1903

County Record

SEC 20. 37 - 9 April 15 - 1902

commenced at E 1/4 Post identified by Post & one org B.T. Don had made new bearings
 { WPine Stump 18 N 33 E 47
 do do 12 S 50 1/2 W 48 1/2

Run west var 3.1/2° E copied on Page 220
 9054 feet 708 South of 1/4 Post. identified by Post set by Don and one org B.T. the Birch it is broken off but bench mark is Plains county record
 □ □ □

SEC 32 - 38 - 8 April 18 - 1903

went N.W. corner. identified by 1 org B.T. and org Post Run South var 4° E
 2084 Top of High Bank on Left Bank of River
 2409 over River & feet 7 1/2 links E of manuell
 2 org B.T. & 1st Post 646 in

came to left Bank of River which has been washed away some found the stump of The Elm B.T. called for an old note 3d some State for meander Post: found distance from corner to meander on Left Bank of River to be 2624 ch a shortage of 442 ch proportioned this distance and set 1/8 Post 1656 South of Sec corner.

I then went to a point 1.85 ch N.Easterly from Bear Pier on Left Bank of River and on line a line with the upper side of Bridge and on lot 4 Sec 32 - 38 - 8 E
 Then N 12° W 760 ch

- .. N 35° W 422 "
- .. N 43 1/2° W 366 "
- .. 12 1/2° W 501 "
- .. 42° " 746 "
- .. 70° " 731 "
- .. 33 1/2° " 265 "
- .. 69 1/2° " 458 "
- .. 54° " 1400 "
- .. 55° " 3000 "

Page 174
 County Record
 BT Me 4208 4554

.. west 100 To 1/8 Post. 1656 ch South of N.W. cor. 32. 38 - 8

26 2.38-5
S.E.C. 2-38-8 E. April 22-1903

Went To NE corner. Identified by the 4
org. BT (stumps) Set New Post Run W. var $3\frac{1}{2}$ E
4000 could not find $\frac{1}{4}$ Post

4400 Enter Tam & cedar Swamp

6250 Leave

7900 Enter Swamp

8030 fell 45 links N of corner 4 org. B.T.
connected line East and when setting
new $\frac{1}{4}$ Post found Stumps to org B.T.
and set new Post in org. hole found

Point of org $\frac{1}{4}$ Post.
found this Post to be 13 links South
of true line between Sec corners

I then reconnected line west to see cor

copied on Page 6 County Record

Run South from N $\frac{1}{4}$ Post Var 4° E

2800 Swamp

3200 over Swamp

6500 Road Run SW

7000 Set line stakes + went E $\frac{1}{4}$ Post

Identified by Post set by Marshall from
org B.T.

Run west var $3\frac{1}{2}$ E

280 Tomahawk River 100 wide runs S

4800 Enter Swamp

6400 leave Swamp

8065 fell 61 S of $\frac{1}{4}$ Post set by someone from
a Birch 6526 E 13 as I did not have
good field notes I used this Post until
I get notes, which I have sent for

Went again to E $\frac{1}{4}$ P org B.T.

Run North Var. 2° E

200 Tomahawk River 100 wide runs SW

923 " " 80 " " SE

1840 " " 60 " " SW

3288 fell 108 $\frac{1}{2}$ E of corner connected line South
and set $\frac{1}{8}$ Post at 2050 $\frac{1}{8}$ which is
proportional measurement an ad-
run of 89 links over

27
S.E.C. 2-38-5-E April 25-1903

Fixed order } Tamarac 8 N 4 E 47
course tonight } " 5 N 76 W 7

I found by field notes west $\frac{1}{4}$ P. OK

Picked up + 8 $\frac{1}{4}$ line and continued south
to 7746 where I found two Stumps which
I believe to be org B.T. I searched carefully
with 4 men 3 hours and as there is no
timber to compare to good notes near
and only on the hill where I set Post from
the Stumps mentioned - came N and
set center did not mark Post as make
bearing neither did I mark S $\frac{1}{4}$ P
I also set $\frac{1}{8}$ Post N of center + made
bearing but did not mark them as Post
Run East from this $\frac{1}{8}$ Post to $\frac{1}{8}$ Post
on East Sec line and connected same
West to $\frac{1}{8}$ Post

S.E.C. 35-39-5 April 25-1903
North from NE cor 4 org BT Stumps
250 Enter Swamp

1590 Squirrel River 75 links wide Run E

4023 fell 32 links west of $\frac{1}{4}$ Post both

org B.T. Stumps + New Post
my course was $3\frac{1}{2}$ E
connected line S + set $\frac{1}{8}$ Post

Tamarac 4 S 71 W 56
" 9 S 65 E 88

copied on Page 6 County Record

28 May 25 1903 SEC 25+36. 39-6 E

Survey of island

To get the course of line bet 25+36 I began at meander on Tomahawk Lake (which I identified by both org. BT now in water set new post in Lake) and run west var 40°

1103 feet 3 links N of 1/4 Post 2 org BT green I then connected line. Set instrument on same at a point 181 West of meander and set flag on N.W. Point of island & took the distance to same with stadia wire found distance from instrument to flag 18.60 ch - 181 ch. = 16.79 between meander on shore & flag on island & then went to island & set meander post where flag was placed.
 Then 6N 27 W 6 \ Stump Bank
 " 8 S 1 E 8 "

I then run E on the line

153 ch to lake & set meander post
 } W Birch 8 N 79 W 5 1/2 \ Stump
 } " " 11 S 6 " 10 1/2 \ Bank

From this meander I began meander of island by running

	South	79 1/2 E	400 ch	Stump Bank
Thence	"	7	250	" "
"	"	11 W	200	" "
"	"	28	200	" "
"	"	69 1/2	150	" "
"	N	83	650	low "
"	S	64	300	Sloping "
"	"	45	200	" "
"	"	68	150	" "
"	"	81	300	High "
"	"	north	250	low "

Copied on Page 74
Country record

Small island (SE NW) is S 75 W 750 ch 12 feet water

+++ Thence N	40 1/2 E	150 ch	High Banks
" "	43	500	" "
" "	58	100	" "

+++ Meander on shore is N 43 1/2 W 980 ch water 12 ft

Survey of island cont May 28-1903

Copied on Page 74. Country record
 Thence N 73 E 500 High Banks

" " 54 " 100 " "

" " 68 1/2 " 110 " " To meander

on island and on the line. Thence East on SEC line 153 to meander on East + side of island to the place of beginning.

The N shore of island is 50 ch N of the line at a point equidistant between meanders on island. average height of island is 15 feet above water at highest stage. There is 3 1/2 feet more water in Lake in Lake at present time than when Lake was as its org height which is caused by a dam in sec 10. 39-6 E

SEC. 26 37-9 E June 1st 1903

Went E 1/4 Post. Identified by stumps of both org. BT. Set new post and remarked old B.T.

Copied on 2046 226 country record

Went to meander on W side of Lake bet. Sec 25 + 36 identified by both org. BT

Stumps set new post and remarked BT

Stumps Run West var 40°

877 feet 15 N of corner. Identified by Birch Stump of org. BT. and aspen

Stump "No marks". Set new post and

Made new B.T. of pine 11887 ~~W~~ E 78 1/2 links Run West var 2.20 E

550 met marsh all aspen

1050 over "

1225 Swamp no timber

1600 over Swamp

4000 NO 1/4 Post to be found Site's record

4400 Enter Tam Swamp

7200 leave " "

8501 full 3275 of cor identified by Post set

By Don also B.T. Made by him

Set new post & took down B.T.

☐ ☐ N Pine Stump 12 S 49 E 25
 W " " 12 S 20 1/2 839

SEC 26 continued June 3rd 1903

Went E + Set 1/8 Post at proportional distance
 Bet SE + SW corners + on true line. ^{Tam 4N35E 42.6}
^{Sh 8S 16E 11 3/4}
 Went E and found org 1/4 Post. Copied Stamp
 is all gone but the rock. Birch is down but
 marks as plain. Set new Post and made new
 Bearings { W line 12 N 42 E 52 1/2
 " " 12 S 10 E 55

Found Rand at 4240 ch to 133 1/4 S of 1/4 Post
 This leaves distance from 1/4 Post to SW cor 4261
 as my Randans is 133 S of 1/4 P 327 S of SW
 corner my departure is 4261 ch would be
 194 ch. DEC for correction. 04.55 Var 15' W
 course of line from line from SE cor W to 1/4 Post
 is 25'E

Then went west and set 1/8 Post placing
 Equidistant between S 1/4 P. and SW corner and
 240 N. of Randans

{ Tamapuch N W 38
 { Spence 75

moved Post 5 links S and 4 1/2 links E
 Went E and set 1/8 Post at 2520 + 66 1/2 N of
 Randans { W.P. 10 S 71 W 65 1/2
 { no other near

Went to E 1/4 P. + run north Var 40 E
 2106 fell 10 links E of 1/8 P. Which I set in 1899
 2600 } Set new Post and marked new BT
 500 RR } Tam 12 S 75 E 92
 " 10 S 5 W 74

Went to NE cor + set new Post + made an
 new BT { Tam 9 S 79 1/2 W 25 1/2
 Run west Var 3 1/2 E

4215 fell 42 N of 1/4 Post (org BT) found foot ok
 + + + made 1 new BT ^{W.P.} 3 W 35. connected on
 to this Post + run west on course of the
 connected line Var 70 E. This page also

+ + + went E + set 1/8 Post { copied on Page 226 of
 County record

1400 Enter Swamp

3600 leave " □ □ □

SEC 26-37-9-E cont. June 21st 1903

4185 fell 46 links E of corner. Identified by Post
 which was down. found Hole with Point of Post in it
 also found Roots + Holes where both org BT stood
 Set new Post, no green timber near but a Rock
 4x4 feet 15 inches high. Took course and distance
 from this Rock at a Point where a white vein
 Running E + W is intersected by another
 white vein Running NW + SE

Course is 78 E. 28 1/4 links. Went E + set 1/8 Post in
 Set this with Rock. Tam 14 N 60 W 27 (dead tree)
 Compares water to old Post. Root S 65 E 11 tree fell E. Post in water
 Run South from NW corner Var 5 E
 2400 Shepard creek Run East

500 R.R. is S of 1/4 P. ^{400 ch} ^{1/4 Post} which
 4233 fell 12 links East of corner. Set Post June 2-1903
 was set By B.F. Don Took his B.T. N.P. in 16 N 20 E 19
 used Dead Post which was a cedar 4x4 inches

Set 1/8 Post 21 1/2 N of 1/4 Post. 6 links W of Post
 Spruce 6 S 46 1/2 W 43. { a Rock 6x10 FT. 2 1/2 FT high NW + SE. a crack
 in SE end Bear N 46 W 10 links
 Run S from 1/4 Post on connected line Var 4.50 E
 400 500 R.R. runs E of NE

4228 fell 15 links E of corner. Set new Post June 21 1903
 Went N + set 1/8 Post at 2114 + 7 1/2 W of Randans
 Cedar Post 4x4 in + 4 feet long
 Copied on Page { Hem 4 N 63 E 2 1/2 } 226
 { cedar 4 N 55 E 12
 " 6 S 40 W 17

timber is all blown down except trees as above
 given, and they are only 4 feet high

East from W 1/4 Post Var 2 E

4250 Swamp 1000 500 W County

8260 Leave Swamp need

8494 fell 2,83 ch N of 1/4 Post. Post set new June 21st
 DEC for correction 333

cannot understand why I came out N of
 1/4 Post so far, as the north and south lines
 of this Sec are an about 2 E (See Page 38)

SEC 35-37-9E June 4th 1903

South from NE cor no var, no datane. But
This + NW cor is 8501 I think SE cor must be W of
NE cor on any E var
4000 could not find 1/4 P
7997~~2~~ fell 6.61 W of corner org. B.T.

= June 15 1903 =
SET E 1/4 P at 3999~~2~~ and 3.30 1/2 E of Random

See Page 37 { Tam 4 N 32 1/2 W 33 1/4

For 48 Posts { cedar 7 S 74 E 55

Run West from E 1/4 Post var 1.30 E

1910 Rhinelanders Road N + S

3100 " " E + W

5715 " " S.W.

8272 fell 6.2 1/2 N of 1/4 P. Set by myself

D&C for correction 00.75

cannot var 156.

Run N from West 1/4 P. var 60E

800 Enter Swamp corner on Page 235

1750 leave " county record

2200 Enter " "

3400 leave " "

4262 fell fell 53 E of corner Set by Don

xxx Went S + set 1/8 P at 2131 + 26 1/2 W of Random

" " " Rest 1/8 P. from BT made by my-
self when I subdivided Sec 34

Went S to SW corner Set post + made

two bearings | WP in Stump 12 S 19 E 53

N " " 16 S 88 E 27

xxx B.T. for N 1/8 Post | W " " 14 S 58 E 6

on west SEC line " " " 17 S 25 1/2 W 14

Run E from SW cor var 3 1/2 0E

300 Enter Swamp

3400 leave " "

3900 Enter " "

4020 fell 1.36 N of 1/4 P. Identified by one org

BT Down + quite rotten Set new Post and

and made new BT | cedar 9 S 80 1/2 W 40

Went West + set 1/8 Post | Tam 10 N 68 E 23

17 | Birch 8 S 64 E 29 1/2

154

140

54

124

110

144

16

SEC 35-37-9E cont June 14 - 1903

Run N from S 1/4 P var 60E

8190 fell 160 1/2 W of 1/4 P NEW Post and B Y

Went S + set center | W.P. Stump 12 N 74 1/2 W 76

ALL COPIED on Page DO 14 S 52 W 25

Distance E 1/4 Post 4997 235

" W " " 4145 county record

" N " " 4043

" S " " 4147

2098 1/2 E of cen. set 1/4 P | W.P. Stump 10 N 16 E 17

DO 12 S 16 E 10

2073 W " " " 1/4 P | W.P. Stump 10 N 27 E 19

DO 12 S 83 W 12

2021 1/2 N " " " 1/8 P | N.P. in STUMP 10 S 11 E 30 1/2

Rock 678 Ft. 3 FT high Hole near center This Hole is N

2073 1/2 S " " " 1/8 P | W.P. Stump 10 S 80 W 14 1/2

DO 11 S 27 E 20 1/2

Went to 1/8 P S of center + Run W var 30E

4080 fell 152 S of 1/8 P. Set by myself var 1500

Went 1/8 P. W of center + Run S var 50E

4154 fell 58 E of 1/8 Post. Went N and set 1/16 Post in

center of SW 1/4 | Tam 14 N 20 E 36

cedar 14 S 27 1/2 E 16

= June 18 1903 =

Went to 1/8 Post N of center + Run W var 10E

4212 fell 167 S of 1/8 Post - cannot understand how I am

Went to W 1/8 P. on NSEC line run S var 20E

I intended to run on 50E but forgot to change

varies. 4109 fell 194 W of 1/8 Post

Went N + set 1/16 Post in center of NW 1/4

{ Tam 7 N 44 W 19 1/2

" " 6 S 66 E 22

Went to 1/8 S of center + Run E var 20E

4079 fell 34 N of 1/8 Post which I set at

5989 1/2 S of N6 corner

OF breed notes | Fis 12 N 38 1/2 W 20 1/2

DO 10 N 82 E 38

Went to SE corner set new Post from 3 org B.T.

and run west var 30E

4020 fell 71 S of Run 1/4 Post - carried to Page

SEC 36-41-9E June 9 1903

Went to SW cor. Identified same by org. Post
BT gone. Run N Var 4° E

475 Enter Swamp

2150 leave "

4000 could not find 1/4 Post

4550 Enter open Swamp

5700 leave "

7782 full 79 west of corner Identified by Post
and stubs of both org BT

Went S and set 1/4 Post at 38.89 ch and
39 1/2 ch E of Random

W Pine 8 S 80 W 32 1/2
" Birch 9 S 40 E 82

+++

Run E from west 1/4 Post Var 3 1/2 E

3200 Enter open marsh

3622 fell 65 links S of center of sec set by Allen
corrected line west to 1/4 Post

Went to N 1/4 Post. Identified same by
The stump of BT which stands S 16 W 25
Then found the N BT stump which had
been cut close to the ground for a
skidway remarked old B.T. stumps and
set new Post then run with pocket
compare to center of sec.

Finished June 10-1903

+++ 1945 N of corner set 1/8 Post

SEC 12-40-9 June 11-1903

Went to NW corner Identified by both
original B.T. They are green + well preserved
Run South Var 30° E

3500 Enter Swamp timber all down + burned up

4000 could not find 1/4 P. Looked for 2 hours

5075 intersect Lake could not find meander

Went back to NW corner and run N
on same course I had run South

3697 fell 186 ch East of 1/4 Post set by W. Allen
org B.T. has never been found. Allen
run N Bet # 1 + 2 and found closing
corner on correction line + set this
post on true line Bet corners and at
proportional distance as returned

returned by U.S. Surveyors
this Post was still standing. Two of
his B.T. are

open 9 N 27 1/2 W 22

Far 10 N 20 E 17 3/4

I made new B.T. Spruce 9 N 29 E 15 1/2
found course of line should be changed
2° 55' which make course of line 5° 55'
I then went South to Lake and at 4923
offset East 27 1/2 on into line and on
north bank of Lake + set meander

W Birch 9 N 69 W 96

Tan 5 N 7 E 137

got notes call for 5300 ch Bet corner and
Lake there is a shortage of 3.77 I then
proportioned distance and set 1/4 P +
3716 ch S of corner. Bet cor + 1/4 P there
is a loss of 284 3/4 ch Bet 1/4 P + meander
there is a loss of 92 1/4. 284 3/4 + 92 1/4 = 377
Went N + set 1/8 P 59 degrees then
Bet 1/4 P. and NW cor V.I.R. STP 20 N 19 1/2 E 44
+ BT for 1/4 Post

4th BT for 1/4 Post { W Pine 18 N 56 E 85
R oak 16 S 10 W 25 3/4

S&E 1 40-9 June 13-1903

went to west $\frac{1}{4}$ Post and run E on $\frac{1}{4}$ line with
Pocket compass Var 40°

at center of Sec Blazed line new E

Door

2 run E on allens $\frac{1}{8}$ line from $\frac{1}{16}$ P
in center of SW $\frac{1}{4}$ & Blazed line new to
 $\frac{1}{8}$ Post on N & S $\frac{1}{4}$ line Then N to Sec line

Blazed line new

Went to SW cor + run E with Pocket compass
1850 found allens cross line $\frac{1}{8}$ Post gone

run North on allens $\frac{1}{8}$ line to $\frac{1}{16}$ Post
and Blazed line new

Run South on allens line in SEE 12 and
Blazed it new to $\frac{1}{16}$ P in SEE 12 in NW $\frac{1}{4}$

I then came back to Sec line Bet 12 + 1 and
run East on Sec line & Blazed it new
to $\frac{1}{4}$ P. and to meander on Lake Set new
Posts and $\frac{1}{4}$ P and meander found distance
a little short

S&E 35-37-9 cont from Page 33 June 19-1903

Went E to set $\frac{1}{8}$ Post } N.PING STUMP 14 N 70°
DO 14 S 47° W

Run N from this $\frac{1}{8}$ Post Var 50°
4075 fell W of $\frac{1}{8}$ Post. went S & set $\frac{1}{16}$ Post in center of SE $\frac{1}{4}$
} W.PING STUMP 14 N $29\frac{1}{2}^\circ$ E $152\frac{1}{2}$
DO 8 N 82° W $86\frac{1}{2}$

Run N from $\frac{1}{8}$ Post E of center Var 430° E
4027 fell 35° E of $\frac{1}{8}$ Post which I set when I run
line Bet 26 + 35. set $\frac{1}{16}$ Post and west
East to $\frac{1}{8}$ Post at same time June 3-1903

$\frac{1}{8}$ Post S of $\frac{1}{4}$ Post on E Sec line } Fin 12° N $38\frac{1}{2}^\circ$ W $20\frac{1}{2}$
DO 10° N 82° E $38'$

$\frac{1}{8}$ Post N of $\frac{1}{4}$ Post on E Sec line } whic 10 S 71° W $69\frac{1}{2}$

Went to N $\frac{1}{8}$ P. on E Sec line & run West Var 10° E
4183 fell 263° N of $\frac{1}{8}$ P. at this point needle shows
a Var of 40° W Var something wrong at
Starting Point. went E and set $\frac{1}{8}$ Post
in center of SE $\frac{1}{4}$ Tam 6 N 41° W 30
DO 6 S 45° E 12

This completes Sec 35 every Post in Sec
is set finished at 1030 am. June 20-1903
commenced work in Sec 26

This page all copied on Page 235
counts record \square

SEC 26-37-9E June 22-1903 cont

all copied on page 226

unless there was local attraction of W 1/4 P

needle showed 3 1/2 E at E 1/4 Post

Went to S 1/4 Post and Run N Var 430 E

1200 Enter Swamp and Windfall

4350 over

4361 E + W Random line 1.41 N of true line

5700 500 R.R. track

5980 Shepard Lake creek Run E

8413 fell 123 West of 1/4 P.

Went S and set center of Sec at intersection

of corrected lines } Dead Tam 11 N 20 W 20 1/2

in Tam swamp } do 11 N 98 E 20

Distance to N 1/4 Post 4193

" " S " " 4220

" " E " " 4211

" " W " " 4283

2096 1/2 N of center set 1/8 P } Spruce 8 N 17 1/2 W 282

2110 S " " " " " } no Post set

2141 1/2 E " " " " " } Dead Tam 6 N

do 6 S

2105 1/2 W " " " " " } Dead Birch 10 N 22 13

do 14 S 44 1/2 14

South from 1/8 Post W of center Var 40 E

1200 Enter Swamp all blown down

2400 leave Windfall

4210 1/2 Fell 88 E of 1/8 P. Went N and set 1/8 Post at

2109 1/2 as it is not possible to run an

E + W 1/8 line through SW 1/4 on acct of

Windfall & added distance from center to S 1/4 P

County Road " " " W 1/4 P to SW cor

also distance N + S through S W 1/4 making a

Total $126.57 \div 3 = 42.19 \div 2 = 21.09 \frac{1}{2}$

{ Dead Tam 8 N 83 W 19

do 6 S 12 E 32

all

North from 1/8 P. W of center Var 30 E

450 500 R.R. + enter Swamp

800 creek outlet of Shepard Lake

Copied

SEC 26-37-9E June 25-1903 cont

4214 F. 10 14 W of 1/8 Post

Went 1/8 P. N of W 1/4 P + Run E Var 20 E

4197 fell 195 N of 1/8 P. went W + set 1/16 Post

{ Tam 9 N 68 W 227

no others near

East from 1/8 P. N of center no Var

220 Shepard Lake creek Run N of NE

1100 " " " " " SE

1900 " 500 R.R. Run N 72 0 E

2650 Shepard Lake creek Run E of NE

3000 " " " " " East on line

3200 " " " " " N of NE

4218 Fall 27 1/2 N of 1/8 Post

North from 1/8 Post E of center Var 30 E

1550 Shepard Lake creek Run East

4203 Fell 4 links N of Post line all in Swamp

Went S + set 1/16 Post { Spruce 9 S 25 E 62

do 9 S 27 W 90

Finished June 25 1903

all copied on page 2226 County Record

42 SEC 31-37-10 E June 27 1903

Went to $\frac{1}{8}$ Post E of SW corner which was set by Allen. Guemear, Seiwright and myself 5 years ago
 Then north on same course as Range Line which is $6^{\circ}15' E$
 3165 Intersect Pelican River on thought far and set meander Post
 Sharp Pointed Rock 2 feet above water
 N 68 W 48 $\frac{1}{2}$ county road
 W Pin 65 40 $\frac{1}{2}$ E 12

Survey of Road for Pelican
 commencing at $\frac{1}{8}$ Post an section line between sections 4 & 9 and between $\frac{1}{4}$ Post and SE corner T. 36 N. R. 6 E.

Thence South on $\frac{1}{8}$ line 4150 to $\frac{1}{8}$ P on E & W $\frac{1}{4}$ line in Sec. 4

Thence South on $\frac{1}{8}$ line 3525 chain to Rhinelanders to Monaco Road and Set Post W Pin Stub 12 N 62 E 33 $\frac{1}{2}$

Dated July 12th 1903

Posted on Page = 193

County Record

43 SEC 2-41-7 July 8 1903

Went to NE corner identified by Birch Stump with marks Plain also Sugar which Stands N 11 W 46. Set new Post and run West Var $1^{\circ}30' E$.

2700 enter Swamp

3800 R.R. Track

3850 Lumber Ties offset S 30 links

3975 over " " " N 30 " Spurn to R.R.

4181 Fall 5 $\frac{1}{4}$ links N of Meander which is

identified by Roots of W Pine which stood N 34 W 61. Set Iron Pipe for

Meander Post - Went E & set $\frac{1}{4}$ Post

at proportional measurement an iron

Pipe for Post - Went E & set $\frac{1}{8}$ Post

W Birch 6 N 35 $\frac{1}{2}$ E 39

Do 65 6 E 28

Instrument adjusted on 00 Var

Run S from N $\frac{1}{4}$ P. Var $3^{\circ} \frac{1}{2} E$
 8000 could not find $\frac{1}{4}$ P. on line

came back and Platted town of Hackley at right angle with Stave, which which sets an Stone Foundation commenced work, from SW corner of Saloon building which also has Stone foundation and is 985 feet South and 35-7 feet East of a right angle from town line at $\frac{1}{4}$ Post. The Village Post is on no Var, while town line runs on a Var of $T. 40^{\circ} E$ finished putting town July 10 - 1903 - will have to come back & finish Post later on

Went S & Car: Identified by Post + 1619 BT
 and 1 new BT 1 W. Pin 10 N 9 1/2 E 29 1/2
 run N Var 73 1/4 E
 2025 creek 15 links wide across SE
 2400 Spun of chin: M. ± ST P R
 4066 fell 39 links E of 1/4 Post identified by
 1 org BT Stump + Point of Post - Set
 new Post and made new BT

{ W Pins 7 N 30 1/4 E 21 3/4
 { Rodok 12 N 21 W 39

corrected line South + set 1/8 Post in creek

{ W Pins 28 S 6 1/2 W 38 1/4

corrected South to corner. found trespass on

S & SE. 25. of Tamarac trees sealing st
 also W Pins windfall " "

As meander on west side of Lake is gone I
 commenced at meander on N side of Lake
 which is 100 ch N of sec corner in Lake. Run
 West Var 3 1/2 E 400 ch. Then S 100 ch. Then turned
 a right-angle East and ~~set~~ set Temp meander.
 commenced chaining West from Temp meander
 2142 fell 122 North of 1/4 P. 2 org BT

Went E + took distance from Temp Me. to MC on
 E side of Lake which is 163 E of corner in Lake I
 then deducted this from distance between Temp me.
 and MC on E side of Lake. found distance
 from Temp Me to corner in Lake to be 305 ch
 I then moved Temp Me S into Line Bet
 SE sec corner in Lake + S 1/4 P. I then
 moved Temp MC E 14 links to edge of water
 in Lake + set Meander { W Bich 4 N 68 W 31 1/4
 Do 4 S 28 W 16 1/2

Copied on Page 125

This makes distance Bet West Me and
 S 1/4 P. 2156 ch. DSC for correction 5 links
 to chain correct Var 6:20

I found an overrun of 99 link between
 Meander + S 1/4 P. Proportional measurement
 + set 1/8 P. 61 link west of Meander and
 2095 E of 1/4 P. { Here 11 S 53 W 16 1/2 N 63 W 16
 " 11 S 60 1/2 E 12 1/2 43 1/2 E 12

Went to S 1/4 P. and run N Var 10 1/2 E
 9393 fell 734 1/2 E of 1/4 P identified by 1 Pin &
 Stamp 3 14 S 48 W 87 correct Var 15 00
 aspen is gone = DSC for correction 7.82

Went E 1/4 P. 2 org BT
 Run West Var 40 E intended to
 run on 6 E but forgot to do so
 intersect Lake

- 619 over "
- 1569 over "
- 5844 wet marsh
- 6620 over wet marsh
- 7348 fell 241-N of 1/4 P. set by Door. found his
 post + 1 BT, map 4 11 S 3 E 20 1/2
 east. over

SEC 5-36-8 cont August 13th 1903 cont

Went E + Set center at intersection of corner
 1/4 lines { Maple 11 S 49 1/2 W 22
 { Sugar 8 S 60 E 32 ✓

Copied DIST TO N 1/4 P. 5131 on Page 125
 " " S " " 4288 21.31
 " " E " " 3202 1/2
 " " W " " 4145 1/2 20.73

Went E + Set 1/8 Post at 16.0 1/4 Equidistant betⁿ con.
 { W Blich 14 N 36 1/2 E 9 1/2 ✓
 { W PINE 14 S 26 W 26 1/2

Went to E 1/4 Post and run S Var 3° E

1855 Enters wet marsh

2526 over " "

2879 Enters " "

3339 over " "

3949 1/2 Rt angled E 142 1/2

Then Rt angled S 142 To MC. on N side
 of Lake org B.T. Pine cut. Stump OK
 This makes line read.

4091 1/2 fell 142 1/2 W of MC. Sec. 3, 50

Corner Var 5° E

Whole length of line from E 1/4 P. to corner in lake
 is 419 1/2

Went N + Set 1/8 P. at 2095-49100

{ W PINE 7 N 73 1/2 E 15

Do 7 N 44 W 2 1/2

Run west from this 1/8 P. Var 6° E

25 Enters wet marsh

1520 over " "

2831 fell 14 N of 1/8 P. which I then set on
 cornered N + S 1/4 line Equidistant between
 S 1/4 P. and center of Sec

{ Sugar 20 N 60 1/2 E 25 3/4

" 12 S 38 W 26

Went E and cornered line to wet marsh
 country record

SEC 5-36-8 cont Aug 14th 1903

Went E 1/8 P. on E + W 1/4 line and run South
 Var 19° E

7500 wet marsh to Lake

1765 over " " Copied on Page 125

2135 wet " marsh

2738 over " " country record

2917 Enters wet " "

4117 over wet marsh

4264 fell 163 W of 1/8 P.

The way I happened to be so far off is Myron
 Thompson wanted this 18 line run before
 I had the center set and I made as good
 a guess as could. When I cornered this 1/8
 line N it is nearly all in lake + wet
 marsh set 1/16 P. in center of SE 1/4 in wet
 marsh { W.P. Stump 11 S 85 W 48 1/2

Do 22 N 65 1/2 W 39 1/2

Sealed trespass on W 1/2 SE

Finished Aug 14th 1903

SEC 25-40-6 E Aug 7th 1903

Went SW cor identified by Post set by Horn
 and 1 org BT + 1 new BT. W Pine 10 N 9 1/2 W 29 1/2
 run N Var 7.30 E

2015 creek 10 links wide runs SW

2400 G.M. + S.P. RR Spur

4066 feet 39.8 of 1/4 P. identified by Post
 + 1 org BT stump set new Post
 and made new BT. W.P. 7 N 30 1/4 E 21 3/4

Rid oak 16 N 21 W 39

cornered line S + set 1/8 P. in creek

{ W Pine 28 S 6 1/2 E 34 1/4

cornered line S to corner and sealed
 trespass

S&C line Bet 34+35 + Town line on South Side of 34

Sept 6 1903

Went to corner of Sections - 23-34-35 in road found
~~one~~ Post set from org B.T. driven down level with
 ground - Set cedar Post N-20 feet Var 40° E

Run N Var 20° E

975 creek & banks wide runs SW

1200 into field

2980 Wis River offset East 19 1/2 then N

33.97 Meander Post which I set from the stump
 of The org B.T. marks on stump as plain
 Set new cedar Post & made new B.T.

Aspen 8 N 35 W 24

DO 6 N 69 1/2 E 13 1/4

connected line South & set 1/8 Post cedar 3 1/2 x 3 1/2
 no trees near measured distance west from 1/8 P
 to River found it just 1000 ch. computed the
 acreage from this line N to N line of lot 8 and
 it contains 18 acres 3/4 of this and is hay
 meadow & improved land

commenced again at Saw Bee" corner
 and run west Var 3 1/2 E

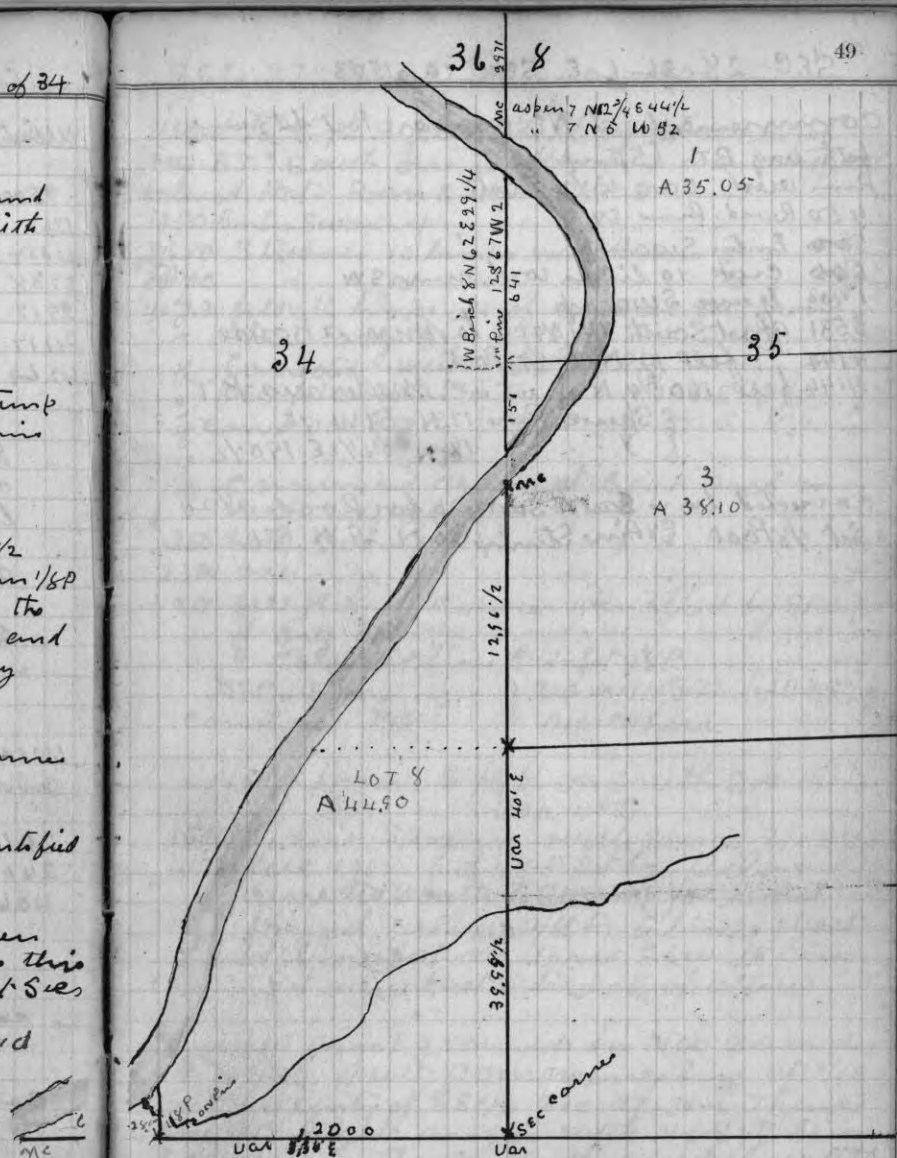
2330 noisy River & Rapids

3330 fell 23.60/100 links N of meander. Identified
 by org B.T.

Went E & set 1/8 Post an iron pin

16 in long 1 inch in diameter driven
 level with ground run N from this
 1/8 P. at parallel with S&C line Bet Secs
 34 & 35 to River about 1000 chais

copied on Page 130 county Record



50 SEC 28-36-6-E Sept 10-1903

commenced at NE corner Post set from
both org B.T. (Stumps)

Run west Var 3 1/2 East

450 Road Run SW

5000 Emba Swamp

6000 Creek 10 links road runs SW

1400 leave Swamp

3531 off set South 141 3/4 ch to Miss a house

4144 fell 19 N of 1/4 Post

4144 fell 160 3/4 N " " " Made new B.T.

E Spine Run 12 N 51 W 73

E Y " 18 N 54 1/2 E 190 1/2

copied for 21 25

corrected line East to Swamp for Road also

Set 1/8 Post Expire Stump 20 N 29 W 54

51 SEC 27-36-6E Sept 10 1903

Went to S 1/4 P. Identified by Stumps of
Org B.T. South one is frown + is a windfall
found Post. Run E Var 3 1/2 E

1250 Emba Swamp

2650 Stream 10 links wide Runs S

3900 " 15 " " " S

4023 fell 16 links N of corner set from

Three org. B.T.

Cancelled west + set 1/8 P.

DEC for cancellation Tam 7 N 13 1/2 E 15 1/2

can't Var 3.17 E Spn 5 S 57 E 8 1/2

commenced again at S 1/4 P and run
west Var 3 1/2 E

250 Emba Swamp

2380 over "

4007 fell 18 N. of corner identified by Stumps
of org B.T.

Cancelled line E + set 1/8 P.

DEC #5/100. } cedar 14 S 71 1/2 W 35 1/2
can't Var 3.45 E } no others

North from E 1/8 P. on South Soc line
Var 4 0 E

1500 leave Swamp Niddle shows 3 1/2 E Var

4132 fell 146 1/2 E of 1/8 P set by Allen

corrected South to Swamp for Road

found all no 1/8 P. 5 links west
of line but on true S + W 1/8 line
set new Post 5 links E of allens

Surveyed school grounds in NW corner
of NESE. to wit commencing at 1/16
Post in center of SE 1/4 Soc 27-36-6 Thence
East at Right angles with N + S 1/8 line
3.25 chains Thence North parallel with
same 1/8 1/8 line 308 ch Thence west at
Right angles with same 1/8 line 325 ch
Thence South on same 1/8 308 ch to Place
of remains

copied on page 39
COUNTY RECORD BOOK

Survey of Road for town of Cassion

Sept 10 - 1903

Commencing at the $\frac{1}{4}$ Post Between
Sections 27 & 34 in Township Number 36 N
Range 6 E of 4th Principal Meridian
Thence East on section line to a stake which
stands on section line 11.77 chains from
Said $\frac{1}{4}$ Post - B.T. for Post E of $\frac{1}{4}$ P. & B.P. in S $\frac{1}{2}$ E $\frac{1}{2}$ $\frac{1}{4}$
Thence N 28° E East, instrument adjusted on a
" " 11.12 E ⁶²³ ₂₆₅ Var of 4° E

" " 3. E 438

" " 38. E 212

" " 46. E 382 and intersect N & S $\frac{1}{8}$ line

1696 N of E $\frac{1}{8}$ P. on South line of Sec 27 and
Set Post P.B. in N 40° W 53 B. P. in S 62° E 24. Marked A.R.B.T.
Thence N on $\frac{1}{8}$ line 2435 to $\frac{1}{4}$ P. and Cassion Road
copied this ++ for on page 34 Co. book

Commencing again at the Stake which
stands on section 11.77 E $\frac{1}{4}$ P. B.T. is marked A.R.B.T.

Thence South 873 at S 52 E and at 465

" " 71 E 564 intersect Cassion Road

" " 13 " 622 $\frac{1}{2}$ set Post" " 42 " 497 W.P. stub 30 S 12 W 72 $\frac{1}{2}$ " " 63 " 745 $\frac{1}{2}$ at 147 intersect

" " 38 " 490 Section Bet 34 & 35

" East 649 $\frac{1}{2}$ 1231 N of $\frac{1}{4}$ P

Commencing ^{East ++} again at $\frac{1}{4}$ Post Between
Sections 27 & 34 Same town & R.

Thence N 70° W 212

" " 32 " 214 $\frac{1}{2}$

" " 62 " 523

" " 86 " 591

" S 55 $\frac{1}{2}$ " 547

" " 79 " 375

" " 68 10 " 430 and to Section

Bet 27 & 34 2585 ch west of $\frac{1}{4}$ and 1432 E of cor
to 27-28-33 & 34

Thence W on sec line to $\frac{1}{4}$ P. Bet 28 & 33

SEC 17 & 8 36-6 Sept 14 - 1903

N from $\frac{1}{4}$ P. Bet 17 & 20 (Set by George Smith)
Var 4 $\frac{1}{2}$ E

6250 Enter Swamp

7980 full 163 West of $\frac{1}{4}$ P. Set from org. B.T. by

D.E. for correction 2.04

Correct Var. 3 $\frac{1}{2}$ 20 ECorrected South to $\frac{1}{4}$ P. for Road

North from $\frac{1}{4}$ P. Bet 8 & 17 Var 3 $\frac{1}{2}$ W
475 leave Swamp

3250 Enter "

6800 leave "

7983 full 148 W of $\frac{1}{4}$ P. org. B.T.

D.E. 180 - corrected Var 145 E

Corrected line S to $\frac{1}{4}$ P. for Road

Survey of Road for town Cassion
Sept 14 1903

Commencing at $\frac{1}{4}$ P. Bet 17 & 20-36-6Thence N on $\frac{1}{4}$ line 7980 to $\frac{1}{4}$ P.

Bet 8 & 17

Thence N from $\frac{1}{4}$ P. Bet 8 & 17 on $\frac{1}{4}$ line to $\frac{1}{4}$ P. Bet 5 & 8 7983

copied on page 28. P. record

Page 19
copied on county record

Went to N.W. cor of Sec 29 identified by 2 W.P. trees + Past my copy of govt notes call for 4 N.P.

Run S Var 72° E on new road

4000 could not find 1/4 P.

8053 1/2 fell 1/2 link E of cor (Stump to 2 org. B.T.

Went N + set 1/4 P. No trees near Set Past in center of Road + drove it down level with 500 ch. S of 1/4 Past Survey out School grounds. described as follows to wit:

Commencing at a Stake which stands 500 ch. South of 1/4 P. Bet. Sections 29 + 30
Thence South on Sec. line 337 ch Thence E at right angles to Sec. line 300 " " N
Parallel with Sec line 337 " " W
at Right angles with Sec line 300 to Place of beginning.

Went to NW cor again + Run E Var 32° E

250 Enter wet Swamp

1000 leave " "

4060 center of Road

8000 Set Temp cor could not find original

100.00 Enter Swamp

10443 Right bank of Tomahawk River

112.63 Left Bank "

Identified by both org B.T. my Random line fell 104 S of Meander on left bank of River. I then found Stump to the 1/4 P. B.T. on Right bank of River connected with Set Past from this Stump + remarked it found dist to Meander Past on Right Bank of River to be

106.03 fell 1/2 South

Govt distance is 106.75 Making a shortage of 1.70 ch Proportioned + Set Temp corner at 7454 ch E of NW cor of 29

Govt notes say distance from NW cor of 29 is 7480 + distance to meander is 2753 = 106.75

Copied on Page 41
County Record

Went to NE cor of SEC 20 identified by meander on E side of Prarris Lake.

George Smith had run a line + connected same from NW of Sec 20 E to this Meander + Prolonged his line E 600 ch + set corner (in field) + Run S Var 3 1/2 E
8000 offset W 600 ch found needle showed a Var of 6.30° E.

10744 offset W 200 ch

12048 fell 10 links W of 1/4 P. 2 org B.T.

Pine is down Tam ok

found an over run of 48 links Proportioned distance + set Temp cor at 8022 South of NE cor of Sec 20 and on true line Bet Sec cor + 1/4 P.

Spring Temp corner on N + S Sec. line West 192 ch

Spring Temp corner on E + W Sec. line South 48 and set Post corner to Sections 20-21-28-29
B.P. 7 N 66 W 82 3/4
+ Sec Page 56 B.P. 7 S 59 1/2 W 97
Connected line South to 1/4 P. for Road

Went N and set 1/4 P. B.P. 7 N 81 W 53

no other near East
connected line South to 1/4 P. Sec corner for Road

Went West + set E 1/4 P. Bet Sec 20 + 29
No trees near Taylor is to
Put bar Iron Pin at 1/8 P.

Went West + set 1/4 P. on iron pin 1 in by 20 inches long
Jack Pine Stump 18 N 23 1/4 W 56 1/2

" " 10 S 55 W 107 3/4
connected west to corner for Road

O C T 26-1923 M C W Bearings

for cor to 20-21-28 + 29 36-6

B. Pine & S 31 E 32 W 31
" " 7.5

This Page is ALL Copied
SEC 20-36-6-E Sept 16-1903

Commenced on west Side of Lake on
Sec line could not find meander Set Temp
meander Post and 17.11ch west of East

... Took distance over Lake with Stadia
wires. Run west Var 00
6058 from Temp meander fell 281 N of cor
which I set in wet marsh from Stamp
to org BT. The field notes call for a V Pin
12 S 77 W 50. The Stamp is a B. Pine but
agrees with field notes in size. I counted
the growth since the BT marks were made
and found it had grown 36 years or 37
years + had been cut 5 or 6 years ago.
making in all 42 years since BT marks
were made which agrees with date
of Gout Survey. Went E + corrected
line from E meander to NW corner and
found distance from meander on west
side of Lake (which I set on shore of Lake and on
true line between E meander + NW cor) to be 5886ch
gout field notes say it is 5404 making an
over run of 482 I proportioned distance and
set 1/4 R 15.29ch west of meander. This leaves
distance from 1/4 R. to NW cor 4257ch I divided
this difference + set 1/8 P. 2128 west of 1/4 P.

BT. for me. on west side of Lake
E V Pine Stamp 20 S 89 W 139

BT for 1/4 P } B. Pine 7 N 70 W 103 3/4

BT " 1/8 P } Tamar 8 S 10 W 82 1/2
no other marks

Set corner to 16-17-20-21 V Pine 24 N 18 1/2 W 703
I found Smiths corner wrong and as had run
point to set cor to 20-21-28-29. I found I had
started 15 links to far S. Went S + moved 1/4 P
2 1/2 N. moved cor to 20-21-28-29 6 links N BT now
read { B Pine 7 N 68 W 80 1/2 XX
do 7 S 62 1/2 W 99 1/2

20 Point Sept 17-1903

gment west + moved 1/8 P N 3 3/4
" " " " " 1/4 P N 2 1/2
BT Now Roads

To locate NE corner of Sec 20
I prolonged the true line from NW corner
to NE on E side of Lake (which has org BT) E
600ch which is the distance returned by
gout's surveyor. There is no more on
River East of this corner so I used
this means to establish this corner
Smith had set NW cor 250 links NE
from BT. When gout notes call for 50 links

Copied This far

Run S from NE on W side of Lake at right
angles to Sec line
645 over wet marsh
1098 Run N Parallele with Sec line 477 to
1/8 line
Thence S Var 130 E
8021 full 107 E of 1/8 P corrected line N and
prolonge line N on 1/8 line to Lake

= Sept 18 =

Went to a Post supposed to be (and is) 1/4 P
BET 6 + 17. to determine if it was the 1/4 P.
found it had been set from the org BT which
stood N 89 E 111. found Stamp and part of
trunk under moss, with sufficient marks
to identify it as the org BT and made
another BT (Tamar 6 S 42 W 99 1/2

Copied to here.

I also found in connecting line between
Sec 17 + 20 that the 1/4 Post set by George
Smith was 80 1/2 links west and 44 links
North of my 1/4 P. BT to which are
B Pine 7 N 70 W 103 3/4 Post
no other for 17 and 18
as I had Run N through 17 from Smiths

1/4 Post and corrected Road line between N+S 1/4 Posts & had to correct line again from my 1/4 P. which I did & set Temp. center 40 1/2. & marked W.P.S. 30 S 72 1/4 W 138 for BT.

I then went to SE cor of Sec 29. which I identified by two org BT. The S Pine has been cut but marks are plain on stump. The B. Pine which stood N 22 E 152 is down but marks are plain. Set New Post and run North Var 4 0 E

3897. fell 30 1/2 links E of 1/4 P. where I had set new Post from org BT. Went S & set Stake on corrected line 34.50 ch north of corner. corrected line S for Road

I then commenced at the Stake which stands 34.50 ch N of corner
 Thence N 63 1/2 W 302 ch
 " " 21 " W 177 1/4 "
 " " 5 " E 191 1/2 "
 " " 37 1/2 " E 363 "
 " " 23 1/2 " E 568 3/4 " To Sec line

3113 ch South of NE of Sec 29
 This line was run for Road which reads as follows

Commencing at corner to Sec 28, 29, 32, 33
 Thence N on Sec. line 3450 ch
 " " 63 1/2 W 302 chains
 " " 21 " W 177 1/4 "
 " " 5 " E 191 1/2 "
 " " 37 1/2 " E 363 "
 " " 23 1/2 " E 568 3/4 " To Sec line
 " on Sec. line 3113 ch To Sec corner of 20, 21, 28 + 29

POSTED
 ON PAGE 41
 COUNTY RECORD

went to 1/4 Post on west Sec line which I identified by both org BT. Set New Post & made New BT. and run S Var 3 0 E = Parties changed their mind and I did not run line. Posted on Page 28

To get the E + W 1/4 line in Sec 21 I began at NW corner & run E H 20 Var 3.30 1400 could not find Mc. River is very high went back to NW cor. & turned & followed an Meanders on E + W side of Lake which are both in line. But NE + NW corners of 29 then changed my course to conform to course returned by U.S. Surveyor found course of line 328 E. course of line 21 + Bet 2128 from Mc W to Sec to be 332 & then went to ~~corner~~ 1/4 P bet 20, 21 and run E 2000 ch for Road - finished at 11 AM Sept 19 " 1903

Posted on Page 32
 county record.

SEC. 34" 43-8. Sept 22.. 1903

Went to center Sett by Door. found his Band.
28 links west. Chained North Uar $4^{\circ}E$
4302 Wood 2 links west of $1/4$ at Right angle from.
Door's Band found Door's Tally Stake marked
8000. ch. Whole det of N+S $1/4$ line is 8048
Doc for correction is 77. Went S and set
 $1/8$ P. Equidistant between center & N $1/4$ P. and
connected line S to center.

Went to E $1/4$ P. and ~~followed~~ ^{followed} Sec line N
and tried to find NE cor. could not
find either Post or BT. Timber is down &
all rotten. Went N to $1/4$ P. between
26 & 27. and am S. Uar $4^{\circ}E$

4093 creek arms W. SW (30 links wide)

8175 fell 77 E of $1/4$ P. (new Post orig trees)

Went N + set Temp Post on Band at

4087 1/2 ch

Went to N $1/4$ P. and am E Uar $4^{\circ}E$

6000 creek 10 links wide Run N

8003 fell 230 N of $1/4$ P. New Post 1 orig BT. down
went W + set Temp cor at 4001 1/2Spung N+S Rand line + temp corner
East 6 linksSpung E+W Random line + Temp
corner South 150 ch. and set Post corner
to 26-27-34-35. { Tam 14 N 10 W 125 1/2
" 12 S 62 E 84Post sets on N Bank of creek 1 BT is
North. The other S of creekfound distance from NE cor to E $1/4$ P
is 4088 3/4 and from NE cor to W
 $1/4$ P is 4008 1/2Went South + set $1/8$ P at2045 S of NE cor { Pine 16 N 49 E 10 1/2
" 16 N 80 W 23connected line S to $1/4$ Post

SEC 34. 43-8 cont. Sep 24 - 1903

Went to $1/8$ P. N of center + Run E. Uar $4^{\circ}E$
3964 fell 225 of Post. connected line W
to $1/8$ Post

= SEC 35-43-8 = Sept 25 = 1903 =

Commenced at $1/8$ P. run E Uar $4^{\circ}E$

3350 creek 50 links wide Run NW

8133 fell 166 S of Post. both orig. B.T.

Went S $1/4$ P. (orig Post 1 orig BT down
Marko Plans am N Uar $4^{\circ}E$

2775 creek 90 links wide am NW

7997 fell 65 links W of $1/4$ P

= Sept 26 =

Went S and set center

Distance to E $1/4$ P. 4020

" " W " " 4092

" " N " " 4067

" " S " " 3930

2020 1/2 E of center set $1/8$ P. 128 3/4 N of Random

Sugon 10 N 38 W 25

" 12 S 11 1/2 E 28

2033 1/2 N of center set $1/8$ Post 48 1/4 of Rand

Pine 16 N 70 W 57 3/4

1965 S " "

No others

" " " " "

16 E of Rand

WBush 10 N 68 E 17 1/2

cedar 6 S 82 W 53 1/4

2046 W " "

41 1/2 N " "

Went to E $1/4$ P. + Run N Uar $4^{\circ}E$

2050 Enter west marsh 2500 over recent marsh

3675 " Spruce Swamp

3927 Intersect Lake 31 E of Meander. Identified

by Tam BT Spruce gone. Connected line

South + set $1/8$ Post at 2020 + 16 W of Rand

Spruce 5 N 47 E 3 1/2

Tam 18 S 47 W 13 1/2

Run W Uar $4^{\circ}E$

S&C 35-43-8 cont. Sept 26, 1903.

- 250 leave wet marsh
 1100 Enter Swamp
 1400 leave "
 1980 Road runs SW
 2075 Wet marsh
 3050 over "
 3350 Wet "
 4052 fell $36\frac{1}{2}$ N of $\frac{1}{8}$ Post

- Went to $\frac{1}{8}$ P. E of center Run N Var 40° E
 4000 Set Talley & line of Stake. I thought Don had run this line & set $\frac{1}{8}$ P but he had not set Post - went to meander on S side of Lake on line bet: 35 & 36. Run west Var 40° E
 603 offset N 157 to Dore's Rand. line which run west Var 40° E. he had come from corner in lake work had been done in winter and he must have located corner & set it by proportional measurements as he was 7 links N of distance given in U.S. Field notes.
 I chained west on his Rand. found his Talley 3 & 4 ok at
 39.99 $\frac{3}{4}$ fell $30\frac{1}{2}$ links S of $\frac{1}{4}$ Post. I found Don had only run his Rand. line 3000 ch I picked it up & prolonged it to $\frac{1}{4}$ P.
 Went E & set $\frac{1}{8}$ P. aches 10 N 16 W 27
 W Pin 16 S 44 E $6\frac{1}{4}$
 Went South & set $\frac{1}{8}$ P. at intersection of canceled $\frac{1}{8}$ lines
 Y Pin 16 N
 " 16 S
 canceled line west to $\frac{1}{8}$ P. found trespass on SWNE along this line
 canceled line to $\frac{1}{8}$ P. found trespass on NENE along this line near NSE line
 I also found trespass near center of Sec on SWNE - NENE and NESW
 canceled line N from center to $\frac{1}{8}$ P
 " " W " " " $\frac{1}{4}$ P

S&C 35-43-8 cont. Sept 28, 1903

- Went $8\frac{1}{4}$ P. and run S. Var 40° E
 3500 Enter Dead timber
 4001 fell 46 E of corner set by Don N.O.B.T. and no timber near
 Went N & set $\frac{1}{8}$ P. Sugar 4x4 3 feet long for Post marks D/45 No trees for bearings
 Went to $\frac{1}{8}$ P. S of center & run E. Var 40° E
 0750 creek
 1150 leave Tam: & cedar Swamp
 4017 fell 8 links S of $\frac{1}{8}$ P. canceled line
 Went to $\frac{1}{8}$ Post - I then canceled $\frac{1}{4}$ line N from center to $\frac{1}{8}$ P and west from center to $\frac{1}{4}$ P.

This finished my work in S&C 35. I kept sealing trespass which I found on NENE, SWNE, NESW & NWSE

□ □ □ □

S&C 36-43-8, Sept 29, 1903

- commenced at meander, 150 ch S of NW corner in Lake and run E Var 40° E
 388 offset N 150 to Sec. line. measured W to Lake found distance 61 links. Lake is very high distance should be according to U.S. Field notes 78 links
 750 intersect Spr Swamp
 1550 over Swamp
 + 2750 intersect Swamp + 3675 creek 25 - Run NW
 4077 fell 63 links N of $\frac{1}{4}$ P. set by Don from org B.T. Went W & set $\frac{1}{8}$ P. a hemlock tree 9 ins. dia. squared it up and marked it $\frac{1}{8}$ S on 4 sides N.O.B.T.
 canceled line W to Lake.
 Lynn & Waterman (Goodyear's Supt) had been working in this today and found it was not necessary to do any more, so this finishes my work in 36-43-8
 Sept 29 - 1903

copied on page 123
SEC 24-36-8 E Oct 5th 1903

What I Know about Sec. 24-36-8 E

1st Town wanted a road layed out on S. $\frac{1}{8}$ line commencing on Range line & running W to $\frac{1}{16}$ Post in center of SE $\frac{1}{4}$.

2nd I found Mousell had subdivided this Sec and as SE corner was gone had set one also $\frac{1}{8}$ P N of SE cor. found Dan had worked in 19 and had set SW cor 19 or SE cor 24 and his corner and Mousells were about 100 ch apart something at $\frac{1}{8}$ P N of SE cor 24.

I was informed the U.S. surveyor $\frac{1}{4}$ P was all right on S side of 24 so I began at Dorr's corner at SE cor & run west Var 16° E. as I was informed this $\frac{1}{4}$ P was over 30 rods S of SE corner and only 3300 ch. from SE cor but I could not find it neither could I find Mousells $\frac{1}{4}$ P but was then informed the East $\frac{1}{4}$ P had never been found. I went west on Dorr's course and at 7378 feet 869 ch from corner set by Mousell and 7364 feet 708 of another corner which is a very old one and an old post beside it which is very old. A Mr Wolf who was helping me said Mousell set his Post by proportioning the dist. from SE to $\frac{1}{4}$ P. between 23 & 26

I then went to NW cor of 24 & run S on and near Road and at 12011 (Var 6° E) feet west of $\frac{1}{4}$ P between 25 & 26 I proportioned this distance & set Temp corner 8007 $\frac{1}{3}$ S of NW corner. for Post I set a cedar 4x4 $3\frac{1}{2}$ ft long for witness a cedar fence post 6 S 77 W 64 $\frac{1}{4}$ I did not Run to $\frac{1}{4}$ P. W of Temp corner and do not know that it is right E & W or not but it is 6 rods S of Mousell's corner. I then went N & set $\frac{1}{8}$ P. a Short Stake driven in ground in road near west wagon track and 200 $1\frac{2}{3}$ N of Temp corner I had canceled my E & W Ranges on to Temp

County Record
Continued Oct 6 - 1903

corner and found that 7368 I had full 728 ch South actual dist from SE corner to Temp corner on straight line is 7335

Corner Var 9.37

As there is NO $\frac{1}{4}$ P on S line it has to be straight and E & W $\frac{1}{4}$ line must be straight then S. $\frac{1}{8}$ line must also be straight so I commenced at $\frac{1}{8}$ P 20 $1\frac{2}{3}$ N of Temp corner and Run E Var 9° 30' E

1133 Edge of wet marsh
1837 hill beyond wet marsh
2200 edge of wet marsh
2760 hill beyond "
6613 Edge of wet "
7158 hill beyond wet "
full S of Dorr $\frac{1}{8}$ Post
SE Page 155 for SW corner

Sec 10-44-2-E Oct 17-1903

Went to SW corⁿ which I identified by both org B.T. and org Post. Placed the chainmen flagman & atterman under oath
 { Chainman Lynn Vaughan & Frank Marcell
 Flagman John Gilligan & " "
 Atterman Thomas Morris & John Gilligan
 cook & hunter Thomas Sheep & his dog Dick
 Instrument used is a Gurley transit in perfect adjustment - to chain, I used a standard Steel Tape graduated to feet on side & links on reverse side.

chain } Run East Var 4° E

1600 leave cedar Swamp

4048 fell 43 links North of 1/4 P. which I identified by 1 org B.T. & stump of the other. Set new Post from org B.T. & went west and set 1/8 Post at 2024 East of SW corner and 2 1/2 South of Random. { Birch 15 N 35 1/2 W 22 3/4
 Fir 12 S 2 1/2 W 18 1/4

corrected 3 in line W to Swamp

= Oct 18-1903 =

Went to S 1/4 P. and run N. Var 4° E

50 Enter Swamp

200 " open Swamp or Hay Meadow

425 Small Stream 40 links Wide Runs NW

1000 leave open marsh or Hay Meadow

2500 " cedar Swamp

8081 fell 125-W of 1/4 P. Identified by both org B.T. but they do not quite agree with the goat find notes in this particular. The corner distance from the ditch is wrong. Set new Post and marked it 1/4 S

Went S and at 4000 ch set line stakes on correct line

correct Var 3°

D&C for correction 156

SEC. 10 44-2-E Oct 19-1903

Went to SW corⁿ and run N Var 4° E

3700 Leave cedar Swamp

3992 fell 55 links W of 1/4 P. Identified by both org B.T. Both OK. Set new Post marked 1/4 S

Went S & set 1/8 P. { Terrace 14 S 41 W 4
 " Do 14 S 45 E 4

did not correct line S from 18 P as at all swamp
 correct Var 3.12 D&C for correction 138

Went back to W 1/4 P. and run E. Var 3.30° E

700 Enter Tam Swamp

1050 Stream Runs North

1175 over Stream " "

1800 offset N 3 links to Miss Large Birch

4025 N + S 1/4 line

5500 Enter = Oct 20 =

- Cedar Swamp

7000 over cedar Swamp

7465 Fall 159 1/2 N of 1/4 1/4 P. Identified by E. B.T. Said to be a Hemlock. but it is a Sugar. and has the U.S. Surveyors marks upon it found roots of W.B.T. Set new Post marked 1/4 S. Went west and set center of Section at intersection of corrected 1/4 lines

Hemlock 20 N 77 W 17 1/2

Do 20 S 41 1/2 E 5

Distance to E 1/4 Post 3839

" " W " " 4026

" " N " " 4121

" " S " " 3900

2013 W of center Set 1/8 Post Birch 20 N 83 E 11 1/2

" 9 S 46 W 7 1/2

1950 S " " " " cedar 10 N 11 W 16 1/2

Do 10 S 2 E 17 1/2

Run west from this 1/8 Post Var 3° E

50 Enter Enter cedar Tam & Spruce Swamp

500 leave

3300 Enter creek bottom - Creek 10 links W Runs N. NW

4038 " fell 35 1/2 S of 1/8 Post

SEC 18. 44-2 E. cont Oct 26 - 1903

Went West and set center of Sec. at intersection
of corrected $1/4$ lines { Hemlock 12 N 24 E 18'

Distance to E. $1/4$ P. 4054
" " W " " 3830
" " S " " 3971
" " N " " 4056

2028 N of center set $1/8$ P. { Hemlock 64 E 13
" " " " " " " " 22.50 W 29 1/2
1985 S " " " " " " " " " Swamp 18 East 18
and 4 feet from SW corner Cook camp
1940 W " " " " " " " " " "

Went from N $1/4$ P. var 330

500 Enter adder creek bottom

725 creek 10 links wide runs NE

1000 over creek bottom

2450 Enter Tamarac swamp

3350 leave " " " " Oct 27 - 1903

3863 fell 31 links S. of corner the 4000 BT are
all standing also org Post set new Post
found distance between $1/4$ P. + corner
is 307ch less than returned by Dept US
Surveyor. Proportioned this shortage and
set $1/8$ E. at 1852 W of $1/4$ P. and 2011 E of corner
and $15 1/4$ S of Random

{ Hemlock 14 N 72 E 30
" " " " " " " " 8 S 51 W 33 1/2

Went NW corner again and run South var 40E

1480 offset W 3 links to Miss large Birch

1620 " " " " " " " " " "

2500 Stream 60 links wide runs East

4031 fell 44 1/2 W of corner $1/4$ P.

Went N and set $1/8$ Post at 4015 1/2 and

22 1/4 E of Random { Cedar 12 N 61 E 9 1/2

" Birch 10 S 81 W 6

SEC 18 44-2 E Oct 28 - 1903 cont

Went to S $1/4$ P. on W Sec. line + Run East var 320 E

100 Enter Swamp

500 over " "

700 Enter " "

950 over " "

3816 fell 56 S of $1/8$ Post at SW cor of Cook camp

= 28 =

Went to $1/8$ P. N of center + run W var 330 E

900 Enter Swamp

1450 leave " "

1550 Enter " "

2100 leave " "

2300 Enter " "

2700 leave " "

3090 creek 10 links wide runs North

3790 another creek same width " "

3846 fell 80 links N of $1/8$ P.

SEC. for correction 2.08

change course to 1° 10' E var

North from $1/8$ P. W of center var 40E

1200 Enter Swamp

2100 leave " "

3000 Enter " " on creek bottom

3896 creek 10 links wide runs E. NE

3700 leave Swamp

4044 fell 8 1/2 E of $1/8$ P.

Went South and set $1/16$ P. at intersection
of corrected $1/8$ lines

{ Spruce 10 N 45 E 30 1/4

" " " " " " " " 10 S 67 E 21

Oct 29 - 1903 =

Went to $1/8$ P. W of center + Run 340E

2600 Enter Swamp Tamarac dead from flowage

3988 fell 33 E of $1/8$ P.

Went N + $1/16$ Post at intersection of corrected $1/8$ lines

{ Birch 10 N 86 W 23 1/4 finished Sec

14 S 36 E 22 1/2 18

SEC 29-42-6 E NOV 12 1903

Run North from 1/8 P West of center Var 4.30 E

2500 Enter Swamp

3970 fell 49 links East of 1/8 P.

Do for correction 222

change course 42

East from 1/8 Post S. of NW corner Var 4.20

3948 fell 4 links S of 1/8 P.

Went west and set center of NW 1/4 at intersection of corrected 1/8 line

corrected 1/8 line E & S from 1/16 Post when necessary to seal trespass finished survey at 3 P.M.

1/16 Post { Hen 14 S 44 E 10 1/2

center of NW 1/4 " 18 N 51 W 42



SEC 7-42-6-E NOV 11-1903

Went to NW cor identified by N & BT stub of SE BT and stump of NW BT. Set new Post and run S Var 3 1/2 E

3993 fell 47 links East of 1/4 Post which

was identified by N & BT & stump of SW BT

Set new Post, corrected line west and

Set 1/8 Post at 1996 1/4 + 23 1/2 W of Random

{ WPin 14 N 67 W 10 1/2

{ DO 14 S 55 E 55

Do for correction 120 change course 43'

Correct Var 247

Run Post/ compass line about 60 Rods East

SEC 9-42-6 E NOV 12-1903

Went to SW corner. Identified by both org BT but the course & distance was wrong got notes

W Bireh 10 N 64 W 12 W Pin 8 S 55 E 16 but I found

The point of org state to which the trees faced and found the Bireh 10 N 16 W 12 W Pin 8 S 28 E 23

Set new Post and run N Var 4 0 E

1625 Enter flowage

2000 set Temp. 1/8 Post as there was no timber N of 1/8 Post and as I could not see over flowage on acct. of dead standing timber which the oxman could not get to on acct. of water I went back to SW corner and run E on same course (Var 4 0 E)

1890 Enter Swamp ++ Tam 6 S 85 E 5

3600 leave " " do 8 S 85 W 11 1/2

3967 fell 122 N of 1/4 Post. Identified by Stumps of org B.T. nearly all rotten and marks defaced. Set new Post and set Posts where org BT stood marked O.B.T.

Went west and set 1/8 Post at 1983 1/2 and

+++ 61 S of Random correct line from 1/8 P. West to SW corner

SEC 17-42-6 E NOV 12 + 13-1903

Run S. from NE corner Var 4 0 E

4141 fell 86 links E of 1/4 Post. Identified by N E

B.T. which is down & rotten but marks were

visible. also found stump of NW BT but

marks were gone Set new Post and

Made new bearings { Sugar 7 N 41 E 9 links

" " 6 S 48 W 23 "

Went N + set 1/8 Post at 2070 1/4 and 43 W of Random { WPin 14 N 37 E 14 links

{ DO 14 S 68 W 7 1/2 "

corrected line N from 1/8 P to Sec corner

Run west from 1/8 P S of NE corner Var 3 0 E

300 Enter Tam + cedar Swamp

2250 leave

4000 set Tam " " "

Sec 9-42-6- Nov 13-1903

Run N from $\frac{1}{8}$ P E of SW corner 4th E
1850 could not get across flowage and
quit

SEC 1-42-6-E NOV 14 - 1903

Went to meander on N side of ^{cut} Bet SEC 1+2
Which I identified by Both org B.T. NE one is a
dead stub quit rotten. Marks Plain. Set new lat^h
Run N Var 3rd E

59 links Set Temp $\frac{1}{8}$ Post ^{to drain}
1958 fell 6 links East of ~~the~~ $\frac{1}{4}$ P. Which I set
from SW RT ~~the~~ NE one is gone
E E in bottom of this Pass?

North from W $\frac{1}{4}$ Post Var 3rd E

3549 fell 273 East of Sec corner. Identified
by 4 org B.T. oak is dead (a stub) quit
rotten. Set new Post $\frac{3}{4}$ inch square by Harrigan
Dec for correction 7 links correct Var 7th E

U.S. Field gives the distance from $\frac{1}{4}$ P to cor
3900 ch which leaves a shortage of 351 ch. Proportioned
This shortage and went $\frac{5}{8}$ + set $\frac{1}{8}$ Post at
1871 $\frac{3}{4}$ and 131 W of Random $\frac{1}{8}$ Post 2 links below
corrected line to $\frac{1}{4}$ P. Run line E from
 $\frac{1}{8}$ P. (between $\frac{1}{4}$ P. + NW cor) to take an 3rd E
about 5 chains EW Pine 15 N 19 W 19 $\frac{1}{2}$
" Buch 8 S 26 E 17 $\frac{1}{2}$

I set an $\frac{1}{8}$ Post at proportional distance
between meander on N side of lake and
and $\frac{1}{4}$ Post Bet 1+2 42-6. There is a shortage
of 42 links. Moved Temp $\frac{1}{8}$ P. South 6 links
+ set new $\frac{1}{8}$ Post EW Pine 12 N 39 $\frac{1}{2}$ E 29 $\frac{3}{4}$
" " " " 12 S 39 W 26 $\frac{1}{2}$

Nov 17. 1903

and set Post on Sec 1-42-6-E

SEC 36-43-6-E NOV 15 1903

Went to SW corner where I set new Post
yesterday ~~the~~ at NW corner of Sec 1-42-6 E
1992 } Run East Var 3rd E
1988 } fell 2 $\frac{1}{2}$ links N of meander identified
by org Post and SW B.T. corrected line
Went to corner

I then run N from SW Var 3rd E
900 Enter swamp
1100 leave " ^{... off set included}
1500 Enter " ^{... off set included}
3700 leave " ^{... off set included}

4000 could not find org $\frac{1}{4}$ Post
7360 Stream 30 links
7750 Stream " ^{... off set} E 50 links
7994 fell 200 ch West of Post set recently by
Pamus Allen. found trees were the
kind & size called for in govt. notes
but did not agree with notes for course
and distance, but it was dark and I
quit.

= November 16 - 1903

Looked again for org B.T. at 4000 ch
found stumps of same. also found
The Point of org Post and other evidence
sufficient to warrant me in setting
new Post + making new B.T. which
did Maple 6 N 25 W 20
Hem: 16 S 71 $\frac{1}{2}$ E 18 $\frac{1}{2}$

Went South + set at $\frac{1}{8}$ P. at
picked up Random + found distance to
 $\frac{1}{4}$ P. from SW corner 3989 and fell 47 ch
West. Went South + set $\frac{1}{8}$ P. of 1994 $\frac{1}{2}$
and 23 $\frac{1}{2}$ East of Random.

{ Run a Decimal for correction 1.18
{ Random correct Var 2.20 E
{ East Post Tam 8 N 25 E 6 $\frac{1}{2}$ corrected line South to
2500 ch Var 3rd E to 9 S 48 W 22 $\frac{1}{2}$ corner

Set Post
44 1/2 3/4 1/2

original 1/4 P. found 2 ch East

They found
2000
Perhaps

SEC. 35. 43-6 NOV 14-1903

West from E 1/4 P. Var 3 1/2 E

550 Enter Tamarac Swamp

875 Stream 190 Wide Runs NE

3375 Leans Swamp

6000 Enter Swamp

6600 Leans ..

4000 found ~~N+S~~ N+S line but could not find 1/4 P.

8689 " 1/4 P. " 853 ch South of Random

= NOV 17" 1903 =

Corrected E+W 1/4 line from 2172 East
of W 1/4 P. to 2172 W of E 1/4 P

This is all Harrigan wanted done

[]

SEC 2 42-6-E NOV 17" 1903 ^{61 years old today}

West from E 1/4 P. Var 3 3/4 E

2423 Stream 200 Wide Runs NW

4500 Enter Swamp

6050 Leans ..

7125 Enter ..

7350 Leans ..

8298 fell 347 N of 1/4 P. Set new Post from org. RT's
Set Temp Post at center an correct line

SEC. 14-36-1 DEC. 1st 1903

Went to SW corner Identified by org. BT
and a Post I set 2 1/2 years ago
Run East Var 40 E

4000 could not find 1/4 Post think it is in
Old Road + B.T. has been grubbed out

8184 fell 260 ch N of corner to 13-14-23-24 Set Post
from The 4000 BT. N 2 one is dead NW one is stump

SE one is also a stump SW one is down all have marks
of scribbing iron - Went West + Set 1/4 Post at

4092 and 180 South of Random ^{W Pine 10 N 12 1/2 W 29}

^{BY " 12 S 54 W 8}

Went west + set 1/8 Post at 2046 East of SW corner

and 90 South of Random ^{B.P. Pine 12 S 59 1/2 W 14}

^{W Birch 5 S 20 E 34}

Corrected line west from 1/8 P. to SW corner

DEC. for correction 4.40 correct Var 1.25

Went S 1/4 P and Run N Var 40 E

4740 G.M. + ST. P. Spur Runs E+W

7957 fell 187 W of 1/4 Post set by me. May 1901

Corrected line South 4000 ch

DEC for correction 2.38 correct Var 2.40

Went to West 1/4 P. Identified by a Gun barrel for
a Post which I placed there in May 1901
Run East Var 1.40 E

700 MAIN LINE OF G.M. + ST. P. RR

1760 Spur " " " " " " " " " " " "

8153 fell 184 N of 1/4 P. Identified by Stump of
Y Pine which stands N 17 W 84 and Stump of
aspens. Pinhead org. marks aspens had no
marks left. Set new Post + made new bearing

^{W Pine Stump 20 S 42 E 33}

^{no other}

Went west and set Post for center of Sec

^{E.B. Pine 15 N 9 1/2 W 61}

^{do 12 S 22 1/2 E 16 1/2}

over

SEC 14-36-6 continued DEC 3 1903

Distance to N 1/4 Post 4074

" " S " " 3883

" " E " " 4082

" " W " " 4071

Corrected line west to west 1/4 P. and at
2035 1/2 set 1/8 Post 43 1/4 South of Random

W Pin 10 S 20 3/4 E 114

E B " 8 S 34 E 118

I then went to E 1/4 P. + Run N Var 3° E

575 CM + STP. RR Spurs

= DEC 4 =

4162 full 54 W of SEC corner identified by
Post set by me from E BT (down) set by
myself May 1901

corrected line S to 1/4 P. and at
2081 set 1/8 P. W Pin 12 N 29 E 61 1/2

} no other marks

Run west from this 1/8 P. Var 3° E

4088 full 46 W of 1/4 Post

corrected line west to 1/8 P

Went to center of line and corrected
line E 1000 ch

printed SEC 14 DEC 14 1903 2-PM

Copied on 25
County Record

COUNTY RECORD

SEC 22-36-6 DEC 4-1903

South from NE cor Var 3° E

1200 Enter Swamp + Spring Very wet

1600 Small Stream Run SW

2100 Same " " SE

4004 full 4 links W of 1/4 P. Identified by west
org BT (dead) and stump of E BT. Set new
Post and made new Bearings

{ Blk Pin 10 S 56 1/2 W 72

Do 8 S 5 E 74 1/2

Went North and set 1/8 Post { Tam 8 S 52 W 14
Do 5 N 51 W 22

Run west from this 1/8 P. Var 3° E

300 leaves Swamp

350 center of CM + STP. RR track

1000 set line stakes - + went DEC 5 to NE cor. 23 to

Do same work for Garland (see Page 82)

= DEC 6 = 1903 =

Went to NE cor identified by Post and BT set and
made by me May 1901 and run S Var 2 1/2° E

3967 full 12 1/4 E of 1/4 Post Identified by NW BT
down cut it off near roots + found marks on
under side. I then found stump of NE BT.

Set new Post and made new bearings

{ W Pin 20 S 46 E 88

} no other marks but marked

org Stump 1/4 S. O. B. T. □ went N + set 1/8 P

= W Pin 16 S 47 W 80 = no other

Run E from W 1/4 Post Var 3 1/2° E

5950 center of Wagon Road

7200 center RR track

7405 full 12 1/2 N of 1/4 Post. corrected line W
I then went NW and picked 1/8 line at
1000 west of 1/8 Post + run west

1950 center of Wagon Road

7100 Enter wet marsh

7800 leaves

7891 full 11 1/2 N of 1/8 Post corrected line
E to 1/8 Post 0

SEC 23-36-6E Dec 5 1903

Went to NE corner which I had identified,
and had set new post for SE cor of 14

Run East Var 3⁰⁰E

3926 fell 38 W of 1/4 Post which I identified
by the Pine Stump My copy of govt notes

Says 1/4 Pin 16 N 17 W 44. I found W Pin 16 S 17 W 48
when was gone. org line was plain 48 links
N 17 E from Pine Stump brought 1/4 P in line.
Facing of this Stump was on NE side and the
84 links would bring 1/4 P 30 link E of line
and believing the 44 should be 48 I placed
Post N 17 E 48 links from Pine Stump which is
a W Pin. canceled line N 10 chain

Went to 1/4 Post East of NW corner and
run S 315 E 2000 ch Then west Var 1.30 E
18 to Swamp did not set any posts
do not know whether lines are right
or not.

Posted on Page 34
COUNTY RECORD

SEC 26. 43-9-E DEC 11 1903

Went to S 1/4 P. Identified by Stump of S. B.T.

US Field notes does not give the BT for
this 1/4 P so I set temp post on sec line
which is 6 link from B.T. Stump

Run N Var 3 1/2 E

6325 interred Lake

7364 over "

7781 set line stake and went E + S 65 1/4 P
Identified by org BT set new Post, and
Run N Var 3 30 E.

297 interred E + W 1/4 line Run by sewer right

3621 fell 8 links E of corner for 25 + 26 on
State Boundary line set new Post from
both org B.T. Went S + 1/8 P. { Ranch N 13 W 34
at 2140. 9/100 N of 1/4 Post } Hems 73 8 19

commenced at NE on state line and
and went N. 74-27 W Var 300 E

about \$10.00 chains found the cor
of SEC. 23 + 26 on state line. set new
Post from both org BT Tamarac is
broken off 3 feet from ground marks
are plain, Redas has tipped Postway
over leaning East and a little South
Run west Var 350 E

50 Swamp, Springs + Small creek

~~200~~ 300 Stream 10 links wide runs W-NW

900 Same Stream runs S 15 links wide

1300 leave Swamp

2509 fell 38 N of 1/4 Post identified by Stump
of both org BT marks on Tam are
plain found 1/4 S on ground at Birch
made new B.T. } WP 24 N 22 E 43

canceled line E to state line

Picked up N + S 1/4 line and found at

7769 I had file 31 links E of 1/4 Post.

continued on next Page

govt measuring
to 33 1/2 saguaro
238 proportioned 600

SEC 26 43-9 continued DEC 13-1903

West from N 1/4 P Var 3 1/2 E

100 Enter Swamp

1000 Leas "

2500 Enter "

3010 creek 15 links mid runs South

4075 fell 342 1/2 S of corner Set run

Post from 2 ory BT

corrected line E 16 1/8 Post at

20 37 1/2 } Sugar N 7 E 16 1/2

17 1/4 N of Round Sugar S 25 E 7 3/4

Took Surveyor's E & W 1/4 Random line

at Talley 15. (75.00 ch) chained E and at

4060 intersected E Boundary line 297 N of 1/4 Post

went west Picked up barrow E & W Random and set center of sec at intersection of corrected 1/4 lines

{ Hem 12 N 18 E 46

{ Birch 10 S 28 W 18

Distance from center to N 1/4 Post 3871

" " " " S " " 3891

" " " " E " " 3961

" " " " W " " 4099

1980 1/2 E of center Set 1/8 P. { Fir 10 N 36 W 14 1/2
{ Bird 10 S 8 W 22 1/2

1935 1/2 N of center Set 1/8 P. { Sugar 34 W 11 1/2
{ Sugar 67 E 29

2049 1/2 W. of center Set 1/8 P.

West from 1/8 P N of E 1/4 P. Var 3 1/2 E.
3983 feet 28 N of 1/8 Post corrected line
East 199 1/2

SEC 26 43-9-E cont DEC 15 1903

As the distance from N 1/4 P. to corner of 23+26 on state line. is 2509 ch and govt notes claim distance is 1660 ch an overplus of 849. I find it difficult to determine where 1/8 Post (East of N 1/4 P) should be. The US maps shows NWNE. is a lot, made up by state line cutting off NE corner. and that the N+S 1/8 line in NE 1/4 intersects state line 340 chains E of corner to 23+26. yet it is 2509 ch from this corner west to N 1/4 Post.

after due consideration I ~~am~~ came of the opinion that the N+S 1/8 line in NE 1/4 should be run on an intermediate course between East Sec line North of 1/4 P. and the N+S 1/4 line So I cornered at 1/8 Post E of center an run N on an intermediate course as described above as I had run the E & W 1/8 line in the NE 1/4 I took 1/2 of the distance between 1/8 Posts and set 1/16 Post. which would be on the course of an intermediate line { Birch 10 N 26 W 49 1/2
{ cedar 9 S 12 E 21

Distance Bet 1/8 P is 3983-22 links longer than than distance from center to E 1/4 P. which would make the distance across ~~the~~ NE 1/4 on N line 4005. which I think it is. I then went to 1/8 P. E of center and run N Var 3 3/8 E

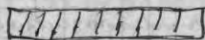
2038 feet 3/4 of a link N of 1/16 Post corrected line S to 1/8 Post.

This line continued would have intersected N sec line 526 1/2 ch west of corner to 23+26 on state line and 2002 1/2 E of 1/4 Post

US Field notes say the cor^r of 23+26 on state line is 670 ch easterly from 39 mile Post when the facts are this corner is 1670 E of 39 mile Post and had this corner have been where they say it is anything would come out OK

S&C 26-43-9E cont. Dec 16 - 1903
 commenced at center and chained west on
 Severn's right Random 2099 1/2 ch and set
 1/8 Post 77 1/4 links South of Random
 { Hemlock 10 N 35 W 17
 { Hemlock 16 S 23 W 27

Run N Var 2 3/4 E.
 2725 Stream 20 links wide Runo West
 3972 fell 38 E of 1/8 Post
 connected line S to 1/8 Post
 This finishes all they want done
 in Sec 26 Dec 16 1903



S&C 27, 43, 9-E Dec 17 1903
 commenced at East 1/4 P identified by
 both orig B.T. NE one is down and nearly all
 rotten still the marks are plain set it up
 against a tree near where it stood.
 SW tree is standing but dead made new
 bearing {

Run west Var 3 1/2 E
 300 leave Swamp
 400 Enter "
 600 intersect Lake
 1850 Leave Lake and go over Point of land
 2160 Leave Lake extending 1000 ch N
 5650 Leave "
 6110 Enter South edge of Swamp
 6450 Leave "
 8000 Sugar bush (Oridian) no 1/4 P. on line
 Set line stakes went E 4500 ch end
 run N with Pocket compass
 2150 leave Leave Lake
 4109. Set line 300 ch E of witness corner
 which is 567 E of 1/4 Post in wet marsh
 Set new Post at witness corner and

See 27-43-9-E cont.

run E Var 3 3/8 E
 567 Set Temp 1/4 Post and commenced chaining
 from it
 450 E of Temp 1/4 Post leave wet marsh
 = Dec 18 =
 3904 E of Temp 1/4 Post fell 11 links N of corner
 connected line West to and set 1/8 P
 at 1937 { Sugar 12 N 65 1/2 W 21
 { do 8 S 4 E 6 1/2
 Set 1/4 Post 557 ch East of witness corner
 on west side of wet marsh
 { Hem 10 S 3 W 176
 { " 16 S 11 E 162 1/2

Whole distance given by U.S. Surveyors
 between witness corner on NE cor is 4577
 actual ~~set~~ measurement is 4471 0 Shortage
 of 86 links I set 1/4 P at 556 1/2 and 1/8 P at
 Equal Dist between 1/4 P. & NE cor (1946)

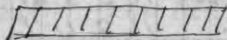
Runs from N 1/4 P. in wet marsh
 160 leave wet marsh
 2650 intersect Lake
 7015 over "
 8115 fell 76 1/2 west of 1/4 P Set Post from
 one orig B.T. maple is gone

Went to E + W 1/4 line and went
 west, at 6911 fell 291 S of 1/4 Post. Set
 Post from both orig B.T. NW one is a stub
 went E & set Temp cor on the ice for center
 of Sec. went E to set 1/8 Post and found
 chainman had made a mistake of 1000 ch
 and had two stakes marked 2000 ch
 went west and reset center of Sec.

no B.T. Post on ice
 Distance N 1/4 P. 3998
 " S " 4117
 " E " 3896
 " W " 4013

SEC 27-43-9-E. DEC 19-1903 cont

Went E from center + Set $1/8$ P. on ice
 { NO trees near on N shore
 and it is far to E shore
 Run N from this $1/8$ P. Var 40°
 450 Leave Lake
 2450 Small Lake 150ch East Enter Swamp
 3000 Small Pond. 150-E
 3500 ^{leave swamp} fell 76° W of $1/8$
 connected line, S to $1/8$ Post in Lake
 This finishes Sec 27



SEC 33-43-9-E. DEC 21st 1903
 Went to west $1/4$ P. Identified by Pieces of
 org B.T.e both are down Hemlock is all gone
 but some of the stump no marks
 Maple is down. Stump rotten. Set marks
 on plain where $1/4$ S was marked.
 Set new Post + marked two B.T.

{ White 6 N 45 E 17
 { Fir 8 85 53 W 21

Run E Var 40°
 1300 Enter Swamp (cedar + Tan)
 1800 Leave " " "
 2050 Enter " " "
 2550 Leave " " "
 7500 Enter " " "
 7800 Leave " " " Livingston log Road
 7909 fell 37 N of $1/4$ P. Identified by NE BT
 which is down fell 3. SW marks plain
 cut it off above the B.T. & found $1/4$ S
 Set cedar Post 6x6 in 3 1/2 feet long
 went west 1977ch and connected line
 from this west to $1/4$ P.
 This is all in Sec 33

SEC 32-43-9-E Dec 22-1903

Went to N $1/4$ P. Set Post from org BT 2
 North one is down 3 one also right
 Run S Var 40° 8000 $1/2$ fell 84 E of $1/4$ P
 Identified by the Birch Sugar is down + rotten
 Set new Post

Went N 2000 ch on from there connected
 line N to $1/4$ Post. I also set Temp Post
 2000ch N of S $1/4$ P. and run a line west
 (with Pocket compass) to an $1/8$ Post set by
 some one unknown to me
 This is all in 32

SEC 29-3L-9E DEC-30-1903

Went to center of Sec Set By Dorr Run West Var 2°
 4148 feet $3/4$ links N of $1/4$ P. Set by Dorr

Went E + Set $1/8$ Post # at 2074 and 1274 S of Random

South from W $1/4$ Post along a fence said to be
 on Sec line Var 40°

2026 intersect Lake copied on page 206

3850 over " county record

4000. Set line Stake. as I found S W corner
 had been moved. Went to center
 and run South var 40°

4080 fell 7 links E of $1/4$ P. which found in
 center of E + W Road in corduroy 6 in
 under ground. Went west and
 found $1/8$ P. Set by Dorr (a Rock 12x12 in
 and 6 in thick with X cut in top.
 I then lined instrument into
 line between S $1/4$ P. + $1/8$ P. west of S $1/4$ P.
 Measured distance from S $1/4$ P. to $1/8$ P.
 and found it to be 4056 I prolonged
 Sec line west 4056 & set East for SW cor
 Picked up west Sec line and connected
 same onto corner and found at
 4059. I had been 1197 1/2 W of SW corner
 Went north + set $1/8$ Post
 of field notes

SEC 29-36-9 E Jan 3 & 4 1904

I then set $\frac{1}{8}$ Post between center & South $\frac{1}{4}$ Part
and run west var 130° E
4135 feet $\frac{3}{4}$ N of $\frac{1}{8}$ Post

Went East and set up instrument
at 2064. Placed Flag at $\frac{1}{8}$ Post on S E line
turned instrument onto flag and then run
north on this line and at 4070 feet $\frac{1}{2}$ link
East of $\frac{1}{8}$ Post which I had set. Went S & set
 $\frac{1}{16}$ Post in center of SW $\frac{1}{4}$ ~~to~~ I did not make
any bearings at any Post I set as there was no
timber and parties interested as to Put in
Stave corner when frost is gone
finished at 10. a.m. Jan 4th 1904

This Page all copied
on Page 206. county record
of Field notes

SEC. 21. 35-10-E January 18th 1904 91

Went to what is called the NW Cor
Found a Post 3 links SW from Nem.
Tree which is 10 inches in dia - also
found marks on another Hemlock
which is about 14 inches in diameter.
and stands about 30 links NE from
Post. This tree is marked T 35 N R 10-E S 16
and faces SW while the Stake is nearly
S ~~E~~ There is no line running South
from this Post. I found Owen had run
N from this corner, and his cornered
line shows a west var copied on Page
The Govt field notes call for a fir and
Spence 4 + 3 in end only 4 + 5 links
from Post. There is no such timber
in this vicinity, but about 500 ch E
There is plenty of it 306

I made up my mind that the corⁿ
called for in U.S. notes is E of this
corner and will set new corⁿ
by Proportion and measurement unless
I find org. corⁿ as a new has a line
N & W to $\frac{1}{4}$ Posts I measured the N
from this supposed cor to $\frac{1}{4}$ Post
Bet Sec 16 & 17 and found distance
3995 chains. I also measured west
to $\frac{1}{4}$ Post Bet 17 & 20 and found distance
to be 3778 chains I then run S from
this supposed cor var 40^o

500 Chain swampt county record
2300 creek 25 links wide runs SE

2700 same stream " SW

4300 same swamp

7888 feet 1.10 E of corner which I set from
NW org BT. which is a stump and
has been grubbed out, but I got a man
named Kussman who grubbed it out
and he placed the stump in its orgⁿ
position from measurements he had

92 S&C 21-35-10E. Jan 19-1904

Taken before re-surveying stump
& made new Bearings } Sugar 12 N 68 W 127 1/2
Hemlock 24 S 16 W 121

Went again to NW corner & run East
Var 4° E

500 Enter low ground Small Fir & Spruce
4800 Enter Tans & cedar swam
8333 fell 81 links S of # Post set by myself
in 1902 from org. B.T.

Then went west & set 1/4 P.

copied on page 206 Sugar 20 N 65 1/2 W 203 1/4
206 " 10 S 26 E 15 1/2

Today this 1/4 P. first I found The whole distance
from 1/4 P. Bets 17+20 to NE cor of 2110 121.11
chain govt. measurement is 120.05 which
makes an overrun of 10.6 I proportioned this
over as 3975, is to 8030. Then I found
Old corner had to be moved East 233 ch
This leaves dist bet NW & NE cor 4100 ch
So I set this this 1/4 P. at 4050. And as I had
to move old corner N 34 links to get the
proportioned dist bet 1/4 P. bet 16+17 to SW cor
of 21. I set 1/4 P. N of Rand. 34 + 24 = 58 links
I then went & set 1/8 P. 6075 west of NE cor
and 45 3/4 N of Random { Maple 10 N 60 E 25
Hem 12 S 58 E 19 1/2

Went west & set corner 81 west of NE cor
and 34 N of Random { Hem 16 N 60 E 25
Sugar 16 S 1 W 36

Went South & set 1/8 Post 19813 of corner
and on tree line bet NW & SW corner.
Tans 8 N 11 W 14 1/2
Do 10 S 26 E 17

Went S & set 1/4 P. at 3962 which is equidistant
bet corner & on tree line Tam 16 N 21 W 50 1/2
county record Sugar 16 S 55 W 116 1/2

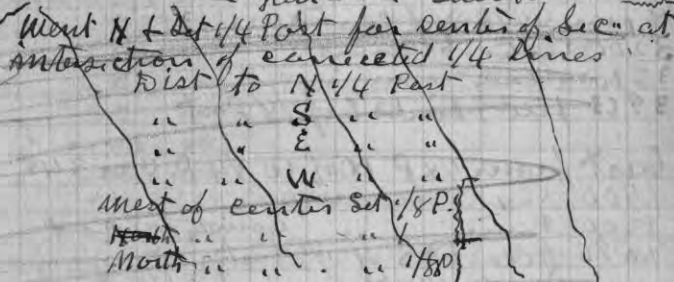
S&C 21-35-10E Jan 20-1904

East from West 1/4 P. Var 4° E
8196 fell 19 1/2 N of 1/4 Post

copied on page 206

Jan 21-1903

South from N 1/4 P Var 2° 30'
1460 Enter Swamp (Tamarac)
3000 Leave " " "
41400 Enter burned Swamp
5500 Crossed west side of Small Lake
1700 Leave Swamp Enter Burned Timber
8004 fell 254 East of 1/4 Post which I set
from evidence given by George Keeler
and Ed Keeler. also from a fence which
runs south from org Post. as both of
The Keelers say this fence was burnt on
1/4 line running South and line was
run by Tom Weeks. When org trees
for 1/4 Post were standing this Post stands
100 South of true line between SE & SW
corner and true line west of center
= Jan 22 = Snow



XX+ South 1/4 P. Sugar 10 S 57 E 24
Hem 8 N 9 S 6 E W 12
North from 1/8 P west of center Var
county record

The Keelers finally said they had not
ever seen any govt. marks at S. 1/4 P
nothing but pencil marks and would
not swear that this was the original 1/4 P.

+++
 Sec 21-35-10 E Jan 22 1904 cont.

So of Run East from SW corner Var 355
 500 C + NW RR eppied
 8233 feet 112 1/2 S of of corner (iron pins set by D HV
 went west and set 1/4 P. at 4116 1/2
 Dead Sugar Stub 14 N 74 E 68 1/2
 " Maple " 14 S 40 W 36

This Part is 142 E. of where Kuler thought org was
 and 233 N. - Course of S Sec line 440°
 Went N + set center Hem 10 S 76 W 30
 Elm 8 S 34 E 21

Dist. to N 1/4 R 3947
 " " S " " 3970
 " " E " " 4109
 " " W " " 4087

Went N + set 1/8 P cedar 8 N 76 W 15
 at 1973 1/2 N of center Birch 10 S 84 E 10 1/2
 on page 306

Went west of center Hem 10 N 67 E 29
 2043 1/2 + set 1/8 Part " 9 S 34 W 4 1/2

N from 1/4 R W of center Var 130 E S
 3200 Enter Swamp
 3800 Trees "
 3963 feet 9 links E of 1/8 Part

East from 1/8 P W of W 1/4 P. Var 345
 1400 Leave Swamp
 2200 Enter " county road
 4076 feet 5 S of 1/8 Part

Went west and set 1/16 Part at
 intersection of corrected 1/8 lines.
 Elm 7 N 35 1/2 E 18
 " 10 S 36 W 14

Corrected lines around SW NE
 finished at 2 P.M. Jan 23

SEE Page 98 for Sec 3 42-6

S E C line bet 1+12-36-8 E Feb-12-1904

Commenced at meander on west side of
 River set by Don Run west Var. 5°
 700 center of 500 R.R.

1511 feet 6 1/2 links S of 1/8 Part set by Don
 Linder 13. N 2 E 283/4.
 SEE for correction 44/100

Corrected line E. to meander
 To continue this line East on same course
 it will come out 500 or 600 ch S of of cor
 To start from SE cor of Sec 1 and run W
 to meander + continue same course you
 will come nearly 140 Rods N of 3 w cor

Went to MC on left bank of River took course
 of line E to cor Var 7.15 E & then adjusted Veronic
 on this course set Transit at MC and true
 line to E. S. E corner there S 81 W 670 to SW
 Point of island. + set meander (cut all way)

copied on Page Elm 8 N 1 W 32
 114 & Oak 11 N 21 W 23

Then N 60 E 200 Post is a cedar 4 x 4 3/2 ft
 " " 57 1/2 E 1360 long 1 1/2 feet in ground
 " " 62 W 200 Trees are marked
 " " 86 " 200 T. 36. N. R 8 E S 1 A MC BT
 " " 57 L " 200 county road
 " " 42 1/2 " 400
 " " 56 " 600
 " " 3 1/2 E 228 to meander

Feb. 23. 1904 City. = Brown St org. Platt

Commenced at N E cor of Coles Store measured S.
 found Linder Bldg. at SE. cor. east all so
 SE. cor. Schlitz Hotel corner. Grade top of
 Stone at SE. cor. of Coles Store is 93/100 of a foot
 above grade. Brown St grade South is a fall
 of 1 foot in 720 feet that is from center of
 Dawson part S. to center of King St. & this set
 a grade B.M. 100 M. S of Dawson part St on W side
 of Brown St

Post ed on Jan 194
 Sec. line bet 4 & 5 Town 36 N R 9 E Chs 6. 1904

North from 1/4 Post bet 4 and 5 Set Post from bearing
 made by Don. WPin 8 N 1/4 W 41/2 Van 50 E 6 E 2. 1899
 2033 feet 167 feet Van 3 1/2 E

met of 1/8 P. set by Don
 connected line S to 1/4 Post. NE E for correction 8.208
 corner at Van 1.5 W Placed iron Point to corner
 3 feet long for 1/4 Post. corner record

SEC. 32 37-9-E May 5 1904

North from 3/4 Post. Set instrument on Hill
 North of 1/4 Post. Placed flags at 1/4 P. + 1/8 P and
 lined instrument between flags. Set line stakes

South from 3/4 Post ang BT. Van 4 06
 3843 feet 5.45 E of corner long BT. good Post
 connected N + set 1/8 P. at 1921 1/2 and 272 1/2
 W of Random EY Pin 11 S 42 1/2 E 66

East from 3/4 Post. Van 5 08
 4066 feet 12 1/2 S of corner
 connected West + set 1/8 P. {WPin Stump 16 S 66 E 43
 This same Stump had been used by Don for 1/8 P

Went to 1/8 P. S of center set by Don and ang E
 Van 3 08

4209 feet 11 1/2 N of 1/8 Post
 connected line west to 1/8 Post
 Set line stakes at 2000 e

Went to 1/8 P. East from center. Set flag at
 1/8 P. on town line Set line stakes South to 64 W
 1/8 line. Went South and set 1/16 Post
 in center of SE 1/4

EWPin Stump 18 S 71 W 51
 E " " " 20 S 24 2/2 E 72 1/4

SEC. 6. 41. 8. E. June 3. 1904

Went to 3/4 P. Identified by By org B.T. and
 Post set by Don January 1904. Run west on
 W.D. Green near old Random Van 2 45
 7271 of set South 250 ch.

7824 feet 53 N of 1/4 Post Identified by E.B.T.

Then Run North Van 3.30 E
 150 to Lake on
 700 over Lake

900 leave marsh
 3704 feet 10 links E. of corner. Identified by 3 org
 B.T. all down but SW aspen
 Went South and set 1/8 Post at 1953.70 which
 is proportional measurement from 1/4 P.

{WPin 12 S 61 1/2 W 5
 " " 12 N 88 828

Run East from NW corner Van 3 1/8 E
 4008 feet 51. N of 1/4 P. Set this 1/4 P from
 North BT which is nearly by of laterated
 Made New bearing Tam 10 S 14 W 107 1/2

Went West + set 1/8 Post. Birch 10 N 15 E 13
 " " 43 41 W 28

Went to N 1/4 P. and run S. Van 3 1/2 E
 7585 feet 12 1/2 East of 1/4 P. (2 org BT)
 Went West and set center of Sec. at
 intersection of connected lines

{WPin 12 N 52 E 6 1/4
 EY " 16 S 20 W 53 1/4

Distance to N 1/4 Post 3666
 S " " 3919
 S " " 3852
 W " " 3972

2013 W of center set 1/8 P WPin 12 N 9 E 7
 1930 " " " " " " 6 S 79 W 7 1/4
 1930 N " " " " " " 9 N 28 1/2 W 25 1/2
 " " " " " " 9 N 70 E 28

Sec. 6-41-8-cont. June 5-1904

East from $\frac{1}{8}$ P. N. of center. Var $4\frac{1}{2}$ E.,
1987 met marsh in old Lake bottom.
3891 over marsh and bill $9\frac{1}{2}$ N of $\frac{1}{8}$ P. set by Don
connected this line west to $\frac{1}{8}$ P.

North from $\frac{1}{8}$ P. West of center Var $3\frac{1}{2}$ E.
3734 fell 36 W of Post. connected line South
to $\frac{1}{8}$ Post. DEC for correction 97/100

West from $\frac{1}{8}$ P. North of center Var $4\frac{1}{2}$ E
Intended to Run on $2\frac{1}{2}$ E

4013 fell 102 S of $\frac{1}{8}$ P.

Went East + set $\frac{1}{16}$ Post. N Pine 12 N $30\frac{1}{2}$ E 10
do 12 S 43 W 11

connected line E from $\frac{1}{16}$ P. to $\frac{1}{8}$ P.

" Range line South from NW cor to $\frac{1}{4}$ Post

" Town " East " " " " $\frac{1}{8}$ "

" E+W $\frac{1}{4}$ " " " $\frac{1}{4}$ P. to $\frac{1}{8}$ P. West of center

Finished Sec 6-41-8 at 4 P.M.

June 7th 1904

6 1/2 days including canoning + going	3250
assistant 6 1/2 days	1300
R.R. fare + meals. on Road	704
Board for two at camp	11 days 550
15 days work by L + A men @ 100	2250
50 ct P. day Board	38054

1/2 of this amt. should be paid by each party
\$4027 each

SEC 3-42-6 Feb 2nd 1904

Went to W. $\frac{1}{4}$ P found it ok Run East Var $1\frac{1}{2}$ W
7842 fell 286 N of E $\frac{1}{4}$ P connected line west
DEC. 3.25 cannot Var $33\frac{1}{2}$ W

Town. line Bet SEC 4+33 + Bet 3+34-41+42 R. S. E

Wednesday June 8-1904

West from $\frac{1}{4}$ Post Bet 4+33. Var $3\frac{1}{2}$ E

4012 fell $33\frac{1}{2}$ North of $\frac{1}{4}$ P. org BT
connected line to $\frac{1}{4}$ P. org BT

East from same $\frac{1}{4}$ P. Var 3° E

fell 4018 fell 10 South SW BT. OK other gone.
connected line west to $\frac{1}{4}$ Post + set $\frac{1}{8}$ P. $\frac{1}{2}$
way between
B. Oak 12 S 82 W 29

Went East to NE cor of Sec 4-41-8 and
run E to $\frac{1}{8}$ P. Set by Don and connected
line west to corner

June 8-1904

June 9 1904

Went to meander on E. side of Lake in Sec 5
41-8-bath org BT. Run E Var 3° E
1368. fell $9\frac{1}{4}$ S of $\frac{1}{8}$ P set by E.F. Don
connected line west to M.C.
finished at 9.30 a.m.

SEC 36. 37-6 June 13 - 1904

Went to NE cor found Post and 2 org BT Stumps
Run south Var 3⁷/₈

6.10 Enter Swamp

12.00 Leave

4013 found 1/4 Post 15 links west of line This
Post was identified by one org BT Stab
remarked it.

Went N + set 1/8 Post as per 65 34 E 8 1/2

Went from E 1/4 Post Var 3 1/2 E

8061 fell 156 South of 1/4 Post Set by Don 2 BT
+ Post. as they were in Road limits
Made 1 new Bearing

copied on page 78

B Pin 8 N 22 E 89
corrected line E to East 1/4 P. for Road
county = 14 = Record

South from West 1/4 Post Var 2 45 E

4000 set line stake found corner gone found
old Post and 1 one BT. down marked Sec 2
This Post + BT. were made by Don.Could not find when Post changed. Went
to 1/8 P. N of West 1/4 Post. Set flag at both
1/4 P. + 1/8 P. and lined instrument in
between both flags. measured from 1/8 P
South to 1/4 P. Prolonged line S to Tally
(500 ch) found my Rand was to far E
figured departure for 500 ch then went
South to Tally 4000 ch. added 8 links to
line. measured west 13 links & found
Post hole + Point of Post Set new Post and
made New bearingsB Pin 6 N 31 1/2 W 39 1/2
" 9 N 8 E 94
corrected line N for Road.Went to cor of 23. 24. 25. 26 in Road and run
Post in center of Road Var 1 1/2 E

4031 fell 4 links E of 1/4 P. on iron Pin 3 links

East of E Rail of 500 R.R. Wagon Road

leaves line at 33 chains Record
copied on page 78Copied on page 232 county record
SEC 32. 37-9-E June 15. 1904Went from S 1/4 P. (1 org BT) Var 1 1/2 E
40 1/4 fell fell 81 N cor 2 org BT Stumps
Went E + set 1/8 P.B Pin 7 S. 45 W 21
corrected line E to 1/4 P.Went west to 1/8 P. and run N Var 2 W
(as I had run E line of Sec + found it run on
5⁷/₈ + 1/4 line on 2 1/2 W. I tried this on 2 W }
E 4080 fell 217 West of 1/8 Post set by DonWent South + set 1/8 Post at
2040 and 108 1/2 E of Random
corrected line South to 1/8 Post.
finished at 5:30 P.M.

SEC 2-36-6-E June 16 - 1904

Went to S 1/4 Post which I set from org BT. (Stumps)
Three years ago. run north var 3 1/2 E

5000 5000 Bear skins Run 80 with aim SW

8900 9000 set line stake could not find 1/4 P.

Went to NE. I identified by Post + Record of two
org BT. Run west Var 3 1/2 E.

200 Enter Swamp

600 leave " copied on page 17 co-record

1840 Enter " Bear line Run 7 c South

2910 leave "

7921 fell 146. North of corner. Set Post from
SE BT and Stump NE BT. Went E and
Set 1/4 Post 3960 1/2 and 73 S. of Random
W Pine 14 S 26 1/4 W 130Went to Random Run from S 1/4 P. and
at 8975 1/2 found I had fell 334 1/2 west
of 1/4 Post corrected line S to 1/4 Post

N.T.C. 0372-2° 08' G. 1° 02' (1° 46' W 1946)

SEC 35-37-6-E June 17-1904
North Between 35+36-37-6E

- Made new Bearings of 1/4 Pin Stamp 14889/2836.
Run North Var. 40° E.
3952 fell 55 3/4 East of 1/4 P. Identified by both Stamps
To org. BT. Set Post + made new BT. 1/4 Pin Stamp 12548W38
connected line onto 1/4 Post and prolonge
Same N Var 52° E copied on page 54
3172 Intersect Sparre Swamp COUNTY Record
3471 fell 12 1/2 West of corner. Set new Post from
SE BT. which was down marks were plain
NW BT entirely gone. Made New bearing
& Spure 6 S 45° E 4 cuts

connected line South to 1/4 P. and South to corner

= June 18-1904 =

- North Between 25+26-37-6 E Var 40° E
200 Leau Swamp copied on page 53
1150 Enter Swamp
1840 Leau " COUNTY Record
2750 Enter "
4001 fell 51 E of 1/4 P. The east BT is down
marks on Stamp are plain west BT is
gone mad new BT spur 5 is 1 link S of the
NE BT. water a foot deep

East from 1/4 P. Set 25+26 Var 50° E

- 800 Leau Swamp
3400 Enter "
3900 Leau "
8074 fell 60 S of 1/4 P. (2 org BT)

East from this 1/4 P. Bet 25+30 37-6+7

- 1100 Small 200 S of line
7124 over Bearskin and RR at Harshard
8322 fell 90 S of 1/4 P. connected line west
for 2 miles in places where road is an
line or when it crosses ^{copied on page 88} line
It is 1200 E of Top of Hill on E. Sid. of RR and
100 N to 1/4 P. Var 40° E line runs through
Leau to an N Side of Log House Co. record

Survey of Road for Town Cassian

Commenced June 19-1904

- Beginning at 1/4 Post BET 35+36-6 E
With instrument adjusted on a Var of 40° E
Thence N 30° E 464 To 50 E of R. of Way of CM + S. PRR
" " 17.45 E 973 Parallels to R. of way CM + S. PRR
" " 68° 30' W 263 across RR + Right of way to 1/4 line
" " on 1/4 line 3679 1/4 line runs on 1° 22' E Var
" " 42° 30' E 131
" " 30° E 145
" " 55° 30' E 236
" " 93° 0' W 163 +
" " 22° - W 592 To N + S 1/4 line 6141 N of S 1/4 Post
" " on 1/4 line 1359 " 7500 " " " "
" " 43° 30' W 308
" " 30° W 586
" " 29° 25' E 676 To 1/4 P. BET Soc 2+36 and Between
Town 36+37 R 6 E
" " 64° 30' E 709
" " 48° 00' E 340 Posted on Page 391
" " 55° - E 343 County record
" " 76° - E 723
" " 54° - E 907
" " 64° 30' E 220
" " 77° - E 779
" " 48° 15' E 483 To SEC line Bet 35+36 N R 6 E and
" " on Sec line 1952 2000 N of cor to 2-2-35+36-
To 1/4 Post. BET 35+36 1/4 Pin Stamp 16 N 76° W 574
Thence N on SEC line 3173 To Swamp Tam 8 N 68° W 54 1/2
" " 26.30 E 490
" " - 30 E 366 To Sec line Bet: 25+36 242 East
" " 20 - W 251 of corner
" " 21° 30' W 462 To Sec line BET 25+26-666 N
" " on Sec line 356 of corner
" " 39 - E 774
" " 49.30 E 579
" " 76° 30' E 819
" " 62° 30' E 413
" " 51° 30' E 332
" " 49 - E 982

over

Survey of Road continued

Thence N	40.00 E	702	
"	"	53 - E	539 to E+W 1/4 line in SEC 25
"	"	4330 E	522 to 4098 E of 1/4 P. NO Timber
"	"	87 - E	876
"	"	89 - E	795
"	"	8230 E	460
"	"	86 - E	860
"	S	5515 E	772 To 1/4 Post on Range line Bet: SEC. 26 + 30 T. 37. N Range 6 + 7
"	"	78 - E	446 East
"	N	72 - E	409 - crossed E+W 1/4 line at 750 E of 1/4 P
"	"	8930 E	601.70 1/4 line. 1425 E of 1/4 P
"	S	71 - E	285
"	East		1380 Posted on page 391
"	S	8230 E	512 county record
"	N	85 - E	169
"	"	65.45 E	269 to 1/4 line at 4079 E of W 1/4 Post
"	East on 1/4 line		1479
"	S	80 - E	324
"	"	4230 E	548
"	"	68 - E	300 to River
"	"	"	112 over River
"	"	"	141 to center of RR track
"	"	"	166 to Street W.P. Stump 14 N 41 E 52 3/4
"	"	33 - "	373
"	"	72 "	352
"	"	4530 E	1045
"	"	22 E	129 to 1/8 P. 2019 N of cor to 129.30, 31-32 37-7 E

SEC. 29 + 30 - 37 - 7 June 21 - 1904

Went to cor to 29, 30, 31, 32 and run N Var 4 E
4038 fell 64 E of 1/4 P. copied on page 88
Went S and set 1/8 P. an iron pipe 3 feet long
in a field - The Sec. corner South is
also an iron pipe COUNTY RECORD

SEC 36 - 36 - 6 E June 22. 1904

Went to 1/4 Post. on Range line found both org BT
badly burned and nearly gone. Run N Var 4 E
400 Streams 10 Run well
1650 " " " " Rapids
2059 Road from Woodboro. as the line had
been run recently and well marked,
and as all I cared for was to locate Road
I set Post in Road + marked a 1/2 Pin 2059 E 20 1/2
and commenced Survey of Road at this
Point. I then went to West 1/4 Post. found
East org BT. West one gone Run S Var 4 E
2400 Enter marsh. on River bottom
3000 Big Rice River
3500 over " "
4063 fell 52 E of corner found the 2 Stumps to
The W Pin B. Trees. + Road to Birch + Hem.
Set new Post and made new bearing
CORR. DIST = 40.63 1/2 Pin 10 N 88 E 90 1/2
I then run west from this cor to 1-2-35 + 36.
Towns 35 + 36 - N Range 6 E. Var 3 1/2 E
2650 Enter Swamp
3100 Leave " "
3975 Enter " "
4020 fell 34 N of 1/4 P. 2 org. B.T.
Went E. and located line when it
crosses Woodboro + Heafford Road. also
Set line when it crosses Same Road

copied on pages

1-4 392 county record

Survey of Road for Town of Cassara

June 22, 1904

With Instrument adjusted on 4th E I began at a stake which stands 2059 North from 1/4 P. Bet SEC. 31 + 36. in Township 36 N Bet Ranges 6 + 7 East. and on Range line

Thence S 82° W	378
" " 73 "	847
" " 22 1/2 "	759
" " 22 "	232
" " 55 "	730
" " 70 1/2 "	645
" " 64 "	577
" " 79 "	832
" N 68 "	295
" S 75 "	714
" " 59 "	360
" " 75 "	404
" " 76 "	330
" " 55 "	650
" " 86 1/2 "	203
" " 82 "	244
" N 40 "	327
" S 46 "	316
" " 29 "	198
" " 70 3/4 "	325
" " 74 1/2 "	116
" " 58 "	383
" " 14 1/2 "	264
" " 3 1/2 "	212
" " 32 1/2 "	169
" " 50 "	214
" " 36 1/2 "	213
" " 59 "	153
" " 23 "	153
" " 10 E	290
" " 16 1/2 W	245
" " 3 E	535
" " 17 E	307
" " 33 3/4 E	455
" " 25 W	120

copied on Page 392
County record

to Section Bet 35 + 36. 36-6 E }
829 S of 1/4 Post }

BET Town 35 + 36 N. R. 6 E
and Bet Sec 2 + 35 and
760 ch West of corner
and set Post in center of
Road. W.P. Stump 20847 N 39
June 23. 1904

To. Town line

City of Rhineland Lot 7. Block 14. 12th add

copied on Page

June 25 - 04

went to SE cor of Block. found org stake also found NE cor of Block 13. found measurements in Blocks. 13 + 14 ok set iron Pipe at the 4 corner of lot 7. B. 14 for Smith.

copied on

SEC 11-36-9-E June 26th 1904

went to NE cor which I set in Jan 1899 by Proportion measurement and Run West Var 10th W at 500 found needle showed a Var of 30th W 2664 feet 265 S of corner meander found Post which I set 1899. and 1 org B.T. made new bearing. W Pin 14 S 42 1/2 E 32 1/2 went E + set 1/8 P. at 1867 West of corner

Tam 10 N 55 E 32 1/2

Corrected line E to corner Page 197

When we came to count the pins we found one gone, and as we could not find it. we measured the Random line again and found we had made a mistake of our chain. The distance is 2564. as it was night we quit. The true Sec for correction 1034 and the 1/8 Post should be at 1795 West of corner + 185 1/2 N of Random

COUNTY

August 25 - 1904

corrected line West from NE cor to Meander and set 1/8 Post at 1795 West of corner

Cedar 7 N 10 E 48

Tam 7 S 27 1/2 E 49

also set Post at 2165 West of corner on East side of Wagon Road } W Pin Stump 15 N 40 1/4 E 73

22 S 50 W 66

This line is for a Road for town of Ellice commencing at a stake which an line between Sections 2 + 11 and 4399 East of Meander Thence East an Section line 2165 To Section corner of 1-2-11-12 Thence East an Section 1779 1/4 to 1/8 Post See page 121 Record

S&C 29-37-6 July 1 1904

Went to SW cor found NE B.T. a stump 5 feet high
 With marks all on it. found NW stump of B.T.
 " Some marks on it Set new Post and remarked
 NW BT Stump. Run E Var $3\frac{1}{2}$ E
 4000 could not find $\frac{1}{4}$ Post
 4125 Enter field Copied on Page 52
 7000 leave "
 8000 could not find car
 12107 fell $30\frac{1}{2}$ S of $\frac{1}{4}$ P. Bet 28+33
 found overplus of 97 links Proportioned
 This overplus + set temp car 8064 $\frac{1}{2}$ E of Cor
 and 20 links N of Random

= JULY 2 1904 =

Went N from temp car to Tomahaw River but
 could not find meander, found Gout line
 where it enters bottom of River and set meander
 where this line intersects River 61m 1231 E 220
 (River is high) | no others
 Run South from meander Var $4\frac{1}{2}$ E
 1206 made careful search for $\frac{1}{4}$ P. did not find
 it.
 5323 intersects E & W Random W of Temp
 corner

13520 fell $74\frac{1}{2}$ links E of corner which stands
 in center of Road. found an overplus
 of 314 ch Proportioned this overplus and set temp
 28-29. 32+33 at 8190 N of car and 53.29 South of
 M.C. & then Spung Temp car on N+S Rand East
 172 $\frac{1}{2}$ " " " " " E+W " South
 22 " ch. Bearings Y Pine 24 N $32\frac{1}{2}$ E 213 $\frac{1}{2}$
 for corner B " 8 N $45\frac{1}{2}$ W 31

Went N + Set $\frac{1}{4}$ Post at Proportional distance
 Bet M.C. + Sec car which 12.35 S of M.C. and
 40 links E of Random { White Pine Stump
 24.87 $\frac{1}{2}$ E 47 $\frac{1}{2}$

Set $\frac{1}{8}$ 3282 S of M.C. + 106 $\frac{2}{3}$ E of Random
 W Pin 8 S. $8\frac{3}{4}$ W 48

County Record

S&C 29-37-6 Continued July 3 1904

Set $\frac{1}{4}$ Post 4032 E of SW cor + 1 link S
 of Random } NO Timber for B.T.

Set $\frac{1}{8}$ Post 6048 E of SW $\frac{1}{4}$ cor Equidistant
 Bet $\frac{1}{4}$ P. & Sec car and $13\frac{1}{2}$ link S of Random
 } NO Timber on Rock for B.T. Put
 } an old Sleigh shoe 3 feet long for Post
 copied on Page 52 County record

See line Bet 28+33-38-8 July 6-1904
 Went to NW cor. 28. in Road found Post no
 B.T. destroyed when Road was made drove on
 Iron 2 feet long bent over at top. for corner
 Run E Var $3\frac{1}{2}$ E Copied on Page 169

3600 Enter Swamp County record
 4188 leave " after crossing Point of Lake
 4211 fell 6 links S of $\frac{1}{4}$ P. found B.T. a stub
 6 ft high very rotten. figures Plain
 Set new Post and made new bearing
 W Pin Stump 24 N $28\frac{1}{2}$ E 27
 connected line west for Road and set $\frac{1}{8}$ Post at
 2105 $\frac{1}{2}$ E Hem 12 S $33\frac{3}{4}$ E 26 $\frac{1}{4}$

copied on page 206 County record
 S&C 30-36-9 JULY 11-1904

Went to $\frac{1}{8}$ P.S of W $\frac{1}{4}$ P. which was set
 by Don and am E. Var 40 E
 4452 fell 118 South of $\frac{1}{8}$ P. in Road set by
 Don. connected line west to
 Starting Point

SEC. 30-41-7 E July 21st 1904Went to N¹/₄ P. & am S. Var 40°

3500 needle showed a Var of 315

4038 fell 115 ch E of center set by some one who
Seemed to understand the work Post & BT
Were marked with iron. Went North and
Set 1/8 Post 2019. } Y Pine 16 N 43 1/2 E 14 1/2
Do 12 S 3 1/2 W 37

Sawt from center of Sec Var 3 1/2 E

1100 Earler Swamp

1981 fell 1/2 link N of 1/8 P. set by same Surveyor
Went East to 1/4 Post set new Post from
Oak B.T. which is nearly gone aspen is gone
made New bearings

Yellow Pine Stump 14 N 45 W 27

" " " West 7 1/2

North from E 1/4 Post Var 20° E

4000 fell 18 W of Post. went South & set 1/8 Post

This Stump was marked } W Pine Stump 20 S 11 E 12 1/2
for 1/8 P before } no others

West from this 1/8 P. Var 3 1/2 E

3989 fell 43 S of 1/8 Post

South from 1/8 P. E of N 1/4 P Var 3 1/2 E

2010 fell 288 W of 1/8 Post some local attraction

Must have thrown me off as I should
have come very close to PostWent N & set 1/16 Post } W Pine 7 N 48 W 5
in center of NE 1/4 } 10 S 19 W 15connected lines West to 1/8 P and N to 1/8 There
was an old line E to 1/8 P. which is correct
I also found 1/16 P in center of NW 1/4 which
is exactly right E + W and only 4 m from
being right N + SWent to center & started to am S. Lynn
went on and found 1/8 P. There was a line
am W from center, chained through to
W 1/4 P. and found distance be 4222 chProportioned The shortage (38 links) and set 1/8 P
1982 West of center and 12 links South
of Random } Tam 8 S 84 W
NO OTHERS

South from W 1/4 Post Var 3 1/2 E

4063 fell 40 links W of corner both B.T. are
OK. have been cut above marks
Made new Post West North and
Set 1/8 Post } Tam 10 N 35 E 19
" 8 S 75 W 32 1/2

East from SW cor Var 3 1/2 E

3120 fell 48 S of MC. set new Post from
both org BTfound a shortage of 30 links. Proportion
and this shortage and set 1/8 Post at
2248 1/2 E of S wear and 34.62/100 N of Random
connected line from M.C. West to
SW cor } Y Pine 10 N 52 1/4 E 11
Do 14 S 61 W 32

South from 1/8 Post west of center Var 30° E

2600 Stream 30 SW

3997 fell 80 1/2 links W of 1/8 Post

West from 1/8 P South of center Var 3 1/2 E

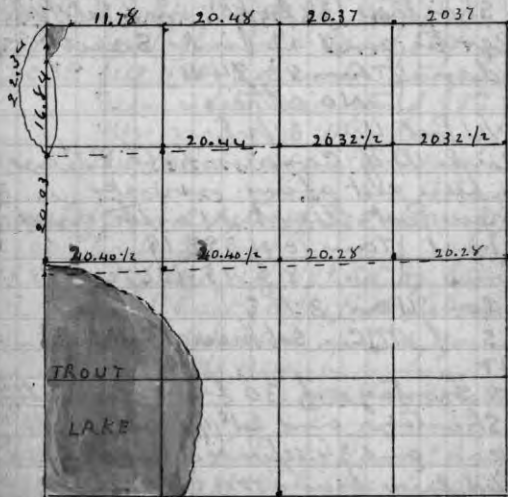
3300 Stream 50 Pins N

4145 fell 22 N of Post. Went E to 1/16 Post in
center of SW 1/4 } Y Pine 16 S 48 3/4 W 23
" 10 S 42 1/2 E 16connected line South to 1/8 Post and
West to Swampfound a trespass of 15 trees on N side
of NW NW 31 - There is a trespass also on
East side of NW NW

finished Sec 30

Sunday July 24 - 1904

SEC 8 - 41-7-E



copied on Page 234

Survey of Road for town of Pine Lake
 commencing at the $1/8$ P N of SW cor of Sec
 34. 37-9-E thence E an $1/8$ line Var 65°
 $4147/2$ to $1/8$ P S of center

East from $1/8$ P S of center Var 6° E
 2154 to $1/16$ Post in center of SE $1/4$
 commencing again at a Stake which
 stands 800 ch E of same $1/8$ Part N of SW
 corner Thence 850° W 344
 " " 9 " 280 to Rhen corner
 and Roosevelt Road + Set Post

W.P.S. 16 N 34 W 65
 " " 16 S 8 E 61 1/2
 8 Pm 8 N 58 3/4 W 27
 I also Post where I left $1/8$ line 800 ch E of $1/8$ Post
 for notes of survey see Page 160 of Book
 1901

country record of field notes

SEC 28-37-9 August 1st 1904

Found Don had set center I had run from
 S $1/4$ P. to his center in June 1900 for a Road it is
 4062 ch from S $1/4$ P to center

North from center Var 30° W

1800 Enter Swamp

2500 over " copied on Page 227

4177 full 18 West of $1/4$ Post. The skin 1035646 is there
 but is dead + broken off about 12 feet from ground
 Remarked it with scribbles from the maple
 is gone, went South + Set $1/8$ P at

2088 1/2 and 9 links E of Random found Dore's B.T.
 a Dead Sparrow 6 S 83. E. 12 1/2 found his Post it
 had fallen over. The $1/8$ P. comes on top of a
 Rock in Swamp. Made new bearing true

Tam 8 N 49 W 65 1/2

could live South to center of Sec

= Aug 2 1904 =

Went to west $1/4$ Post which stands in flowage
 of Lake creek and set a Pole 12 feet long at same
 The org B.T. for this Post is gone but Don had set
 made new B.T. W.P. Stub on dead tree 16. and is N
 about 30° W and about 40 links

could not get course + distance as Post and tree
 are both in water. I then went to a hill top.

Went of center and placed instrument in line
 between center and west $1/4$ Post and set his
 stakes between center and flowage of Lake creek
 about 2500 ch. I then went to NW corner
 found Post I had set 5 years ago. The org B.T. are
 burned also the one I made. Stumps are
 there but marks are gone

Run South average Var taken at different
 points is 220° W. County record of field notes
 1550 center of Wagon Road
 2700 " Robbins R.R.
 2765 to flowage + set Post W.P.S. 16 N 30 E 3
 2905 " org Bank of Lake creek
 3615 over creek and flowage
 3935 full 2 1/2 links E of $1/4$ Post
 over

SEC 28 37-9 E cont. Aug 3 1904

as the distance to Left Bank of Lake Creek is
What the U.S. field calls for I went N and set
1/8 Post at 2000 ch. and 1 1/4 links W of Random
Copied on Page 227 {W.P. Stump 24 N 52 1/2 E 32 1/2
Run E from this 1/8 Post Var 00

Robbins RR county record of fees notes
4313 feet 45 S of 1/8 Post. corrected line west to 1/8 P
□ □ □

SEC 32-41-88 August 11-1904

Went to W 1/4 P found the stump of SW BT in field
Set Post and Run North Var 3 1/2 E
3402 1/2 feet 75 N of M.C. 3 Pins ok. aspen gone
Went S + set 1/8 P at 2001 1/2 + 43 S of Rand.
{W.P. Stump 14 S 35 E 60 3/4
" " " 20 S 44 W 16 1/4

corrected line South to 1/4 P.

Var 4.46 E

Run E from W 1/4 P. Var 4 0 E
5929 feet 118. N of 1/8 P. Set by Barn

— Aug 13-1904 —

came back to 3984 ch off at South 80 links
to new line and four corners had been
set. Made New Post {V Pin 14 N 68 3/2
no other "

Run north from center Var 255 E
3998 feet 2 1/2 E of 1/8 Post which
I believe to be correct found Post and
on BT {W.P. Stump 16 S 88 1/2 W 8 1/2
no other

Set new Post and Marks B + and
Run West Var 8 0 E

3417 intersect Sawyer Road
3289 1/2 feet 17 1/4 links S of 1/8 Post
corrected line E to center of
NW 1/4 and set 1/16 Post
+ {W.P. 10 S 68 E 8
E N " 14 N 20 1/2 W 33

SEC 32 41-8 E Aug 13 cont

as the 1/8 Post E of NW cor is in lake
an intermediate corner set 1/4 line and
and West Sec line would be the same as
to set 1/16 Post Equidistant between 1/8 P. on
N + S 1/4 line and 1/8 P. on West Sec line
which I did and run South. I had
to go away and told Lynn to run South
on a Var of 40 E but he run on 3.45 and
at 3998 feet 12 links West of 1/8 Post. which
I set an corrected 1/4 line and Equidistant
between center + west 1/4 Post
distance between Posts is 3984 = 1992
corrected line from 1/8 Post - West to 1/4 P
and from 1/8 P North to 1/16 Post

— August 14 —

Measured off from West side of SW NW
a Strip 200 feet wide and the entire length
of the 40 which is 1321 feet and set a line
of 5 stakes set Post at each end of Strip

I then measured of a Strip of land which
is East of the 200 feet Strip and is 165 feet
wide and 1321 feet long and set a line of
5 stakes on East line and corners.

This land is particularly described as follows
The East 165 feet of the West 365 feet of SW NW
except the Right of way of The C.M. & S.P.R.R.
This Right of way takes off a Strip and on
South End of the 165 feet Strip as follows

SEC 23-26-27-36-8 E Aug 5. 1904

Road for Town of Crescent
 Commencing at a State which stands on line
 288 chains West of $1/4$ P. Bet Sec 27+34-36-8-E

Thence N 16° E 1447 chains
 " " 52 " 5697 " copied on Page
 " " 31 " 6159 " 124
 " " 41 " 575 "
 " " 10 " 234 "
 " " 12 W 336 "
 " " 12 E 878 "
 " " 2 E 330 "
 " " 12 E 419 "
 " " 31 E 525 "
 " " 7 E 662 to fence said to be on E+W $1/8$ line
 " " $89^{\circ}50'$ E 430 " so called $1/16$ P in NE $1/4$ 23
 " " " E 1800 " center of Road. Said to be an

Sec. line Bet 23+24 and 1997 S of NE cor of 23

Line crosses Sec line ^{at 26+27} 439 N of $1/4$ P. + bet Post
 E B Pin 12 S 68 E 29
 |
 mother

Bearing for Post at Starting Point W.P.S. 14 S 52° 1/2 W 80
 " " angle at #1447 W.P.S. 14 S 64 E 104

at 4329 on course N 52 E to avoid Nic & Ann
 N 67 E 560 Thence N 48 E 501 Thence N 35 E 444 to
 line at 3700 chain course N 67 E crossed Sec line
 333 N of $1/4$ P Bet 26+27

county Record

all courses are magnetic

finished Aug 10 - 1904

Do not know where I crossed line
 Bet Sec. 23+26. Do not know anything
 about the lines in Sec 23. I have set the SE cor
 of 23 by Proportional Measurement N+S but not
 E+W There is no $1/4$ P or $1/8$ P Bet 23+24 and
 cannot be sure the SE cor of 23 is properly set.

SEC 1 36-9 August 23-1904

East from SW corner Var 80 E

" 300 into Swamp

1500 leave " copied on Page 191

3400 Enter "

7117 feet 631 N of corner

Went west end set $1/4$ Post at $355^{\circ} 1/2$ and
 $315^{\circ} 1/2$ South of Random Town 6 north $23^{\circ} 1/2$

" 6 N $39^{\circ} 1/2$ W 7

Went west end set $1/8$ Post 1779 $1/4$ East of corner
 and $157^{\circ} 1/4$ South of Rand. Fin 10 N $36^{\circ} 1/2$ W $39^{\circ} 1/2$

Tan 9 S 61 E $42^{\circ} 1/2$

corrected line west to corner for road

The correct distance on straight line between
 corners is 7090 The correct Var starting from
 SW corner is $3^{\circ} 04'$ county Record

cannot Var 2.16

Soc 35-36-8 E cont: Aug 31 - 1904

West from 1/8 Post S of center Var 40°
3925 feet S of 1/8 P. which I set 1 year ago
corrected line East to 1/8 Post

West from 1/8 P. N of center Var 40°
300 Enter Swamp
2300 Leave ..
3715 feet S of 1/8 Post.

South from 1/8 P. West of N 1/4 P. Var 3 1/4
3915 feet 1 1/2 West of 1/8 P.

Went N + set 1/16 Post (TAM 10 N 75 E 38 1/2

no other
finished at 4 P.M. Aug 31 1904
for other work --- See page 127
April 6 1912

S & C 27-36-8 E. Sept 3rd 1904

Went to SE cor + Run N on old Road Var 50°
1946 feet S E of 1/8 Post. I then went back to
SE cor and Run W Var 3 1/2 E
2031 1/2 to 1/8 Post in Road

Run N from this P. Var 5 1/2 E
1946 Set Tens 1/16 P. & then went to 1/8 P North
SE cor and Run west Var 4 1/2 E showed have
been 3 1/2 copied on page 124.
2031 1/2 + Set Temp 1/16 P. Spring E + W Run N
and N + S line West until they meet at
this proper place. Corrected N + S line on to 1/16 P.

and Run N Var 5 1/2 E } and set 1/16 P
833 center New Road line } Span 6 N 77 2 6
2300 Left Bank of River } county
corrected E + W line on to 1/16 P. and Polan got
line W Var 3 1/2 E

1075 Road line Record

1800 Left Bank of River

I then proceeded to measure what there
is of Lots 5 + 6 West of Road or between
Road River found 9.46 acre in lot 5
" 1881 " " " 6

S & C 18. 42-8 E Sept 10" 1904

Went to 1/8 P set by Don which E of S. 1/4 P. 2 Run N Var 34 1/2°
2000 Still in Swamp set line Stake end went west
to S 1/4 P. new Post set by Don on B.T.

Run N Var 3 1/2° E. through scattering timber
2000 Set line line Stake and started a line E to Swamp
2500 Enter Swamp. water to deep to chain across
a line, and as it is not possible to run this line
though, I went to SW corner in Swamp and
run N Var 3 1/2° E

8000 Leave Swamp and enter Pine timber. Small. 90% VP
3550 Enter Swamp + flange

4027 feet 1/4 link E of 1/4 P. Both on B.T. found it
impossible to run E from this 1/4 Post, as
the mud + water is 3 feet deep. Went South
+ set 1/8 P. 19 P. 10 S 8 E 4. I then began at 1/8 P
in center 1/8 P. East of SW corner which was set
by Don and Run N Var 3 1/2° E down course as
flange line and set Post at 2000 ch and run
West Var 0°

1496 feet 3 link S of 1/8 P corrected Range line S
to Swamp + 1/8 line East to Post. supposed to be
The 1/16 P. in center of SW 1/4.

I find the S 1/4 Post is 400 ch S of SW cor
The S.E. line from S. 1/8 P. West to SW corner
Runs on 1° West Var. and from S 1/4 P
East the Var is 3° E.

□ □ □

S & C 24. 42-7 E Sept 11 - 1904 (Sunday)
Went to 1/8 Post set by Don South of NE corner
Var 3 1/2 East and run West Var 3 1/2 E
= Sunday Sept 11. 04 =

S & C 24 - 42 - 7 - 8
West from 1/4 Post (orig B.T.) Var 3 1/2 E

100 Top of Ridge

188. Lake

1200 Over Lake

2000 Leave Swamp

2700 Enter " timber dead from our flood

SEC 24-42-7 cont Sept 11 1904

7999 full 183 South of $1/4$ Post org Post $\frac{3}{8}$ BT
 Went to NE corner + Run West Var $2\frac{1}{2}$ W
 4000 could not find $1/4$ Post No field notes
 = Sept 17 1904 = field notes came
 offset S 240 to old line changed course 240
 Intended to change it 240
 3954 full $15\frac{1}{2}$ N of corner. set Post from both org BT
 Went E and set $1/4$ P at 3977. and 27 links N of
 of offset line } Y Pine 12 N $65\frac{1}{2}$ E $1/2$
 do 12 S 33 E $18\frac{1}{2}$

Went to S $1/4$ P. which I set from what I believe to
 be the org BT. as I had run S. from center on
 corrected E+W $1/4$ line. I picked up this and corrected onto
 $1/4$ P. found distance from E+W $1/4$ line #3996 and I had
 fallen 16 links to far W. Went back to center and run
 N on corrected course to South $1/4$ P Var 320 E
 4048 full 408 of $1/4$ Post This showed mow turn
 center west 20 links. Dist to S $1/4$ P. 3994

Set Post for center	" " N " "	4048
	" " E " "	4020
There is no timber for BT	" " W " "	3979
1988 $1/2$ E of N $1/4$ P set $1/8$ P	Spence 10 South 1 link	
2010 W " E " "	$1/8$ P W Pine 17 N 62 W 40	
1998 S " center " "	$1/8$ P No other	
1998 " " " " "	Y Pine 14 S 88 E 132	

South from $1/8$ P E of W $1/4$ Post Var 320 E
 4032 full 54 W of $1/8$ Post
 corrected line west to $1/8$ P
 corrected line south from center to $1/8$ Post

East from $1/8$ Post S of center Var 218 which is
 The course of E+W $1/4$ line so
 3000 intersect Lake Niton
 finished Sunday Sept 18-1904
 at 4 P.M.

SEC 17. 42-8-E Sept. 12-1904

Went E $1/4$ Post. + Run N Var $3\frac{1}{2}$ E
 900 Eter Swamp. Stream 26 wide, 50 links East
 2700 center of Creek Runs NW slow
 2880 same Stream Runs NE
 3300 " " " " N and NE
 3550 " " " " " "
 4196 full 162 W of corner org BT
 Went South and set $1/8$ Post
 corrected line South Jordan 11 N 50° E $25\frac{1}{2}$ P
 to $1/4$ Post No other
 Found Dorr had run E+W $1/4$ line, and
 had Run the N+S $1/4$ line N from S $1/4$ P
 6000 but could not get across stream,
 which is now 500 ch wide, and no way to
 get across. The U.S. Surveyor did not run
 the line bet. 8+17. Their notes say it is all
 Swamp and no streams. The stream crosses
 the SEC line from the N.S. about 2300 W. of N.E.
 corner crosses N+S $1/4$ line 1500 ch S of N $1/4$ P
 and goes out of 17 into 8 about 2000 ch S of
 NW corner as Dorr had corrected his E+W
 Band 20.95% + set Temp Post. and Run
 East Var $4\frac{1}{2}$ East
 4019 full 218 N of $1/8$ P
 corrected line west 2009 $1/2$ + set stake
 and run N Var 120 E which is
 Parallel with East section
 650 enters over flow of stream and out
 of Pine timber. as there was no
 use to run this line farther I quit



SEC 20-42-8 Sept 14-1904
 Went to $1/8$ P N of E $1/4$ P set by Dorr and run
 East Var 00 4156 full 3 links N of Post set by
 Dorr. Went West & set $1/8$ P. and run N Var $4\frac{1}{2}$ E
 2141 full 29 W of $1/8$ P. set by Dorr. corrected
 line South to $1/16$ Post that is all in 20

SEC 21-42-8 Sept. 15 & 16-1904

South from west $1/4$ Post Var $40^{\circ}E$

2650 Enter Swamp

4021 full $38\frac{1}{2}$ W. of corner SW BT. OK but dead
NB BT down and rotten marks plainDarr had set new East. canceled line N. to $1/4$ P.East from west $1/4$ Post Var $5\frac{1}{2}E$

600 Enter Swamp or wet marsh

1400 over Run

3500 Enter Tom's Swamp "wet"

4107 full $24\frac{1}{2}$ N of center set by Darrcanceled line west + set $1/8$ P. $\begin{cases} \text{Pin 15 N } 66^{\circ} 15' \\ \text{Pin 18 S } 14^{\circ} 8\frac{1}{2}' \end{cases}$ Run west from this $1/8$ P. Var $4\frac{1}{2}E$ 2040 full 60 west of Post I do not know who set it
but I was told to use it and I canceled on
to it and canceled line S to $1/4$ PostSouth from $1/8$ P. N of center Var $50^{\circ}E$. offset 45 East
onto Dore Rand and at 2033 full 30 S of center
canceled line N to $1/8$ Post

East from center on Dore Rand 34 S of Post

2015 full 17 South of Post. canceled line W to center

South from $1/8$ P. East of center Var $5^{\circ}E$ 4034 full $20\frac{1}{4}$ E of $1/8$ Post on S. Sec lineWent N + set $1/16$ Post at 2017 $\begin{cases} \text{Maple } 4 N \ 41 W \ 13\frac{1}{2}' \\ \text{Sugar } 6 S \ 53\frac{1}{2} E \ 6' \end{cases}$ North from S. $1/4$ Post on Dore's Random4073 full 30 E of center - Went S and set $1/8$ P $\begin{cases} \text{Pin } 10 N \ 21 E \ 8' \\ \text{to } 12 S \ 86 W \ 10\frac{1}{4}' \end{cases}$ East from $1/8$ P S of center Var $50^{\circ}E$.2006 full 40 N of $1/16$ Post. canceled line westto $1/8$ Post and then North to center

This is all in 21

SEC 24-36-9 E. Sept. 27-1904

Went to N $1/4$ P. set by Monrell. by
Proportional measurement from N E.
corner of 24 to NW corner of 23. This Post is in
creek bottom and only 50 links E of creek
line from this I am west on a bar of 5'-
East as I had been informed that this line
run on 10° .

50 Stream 30 Run S

400 leave Bottom needle shows $4\frac{1}{2}E$ 1200 Enter Swamp " " $50^{\circ}E$ 1750 leave " " $4\frac{1}{2}E$ 2200 Enter " " $5^{\circ}E$ 4051 full " " $4.15'$ 3700 leave " " $4.15'$

4051 full 7.66 ch " South of Temp corner

Set by myself 2 years ago by

Proportional measurement from
W $1/4$ P to $1/4$ P between 13 + 14I went E + set Temp $1/8$ P at
2025 1/2 and 383 N of Rand. This Post is
OK N + S but not Right. E + WRun S Var $3\frac{1}{2}E$ 2005 which is the
distance from NW Temp corner to $1/8$ Post
(Temp) I set 2 years ago I then went
to Temp $1/8$ P South of NW Temp corner
and run East Var $6^{\circ}W$ 2025 1/2 and set
Temp $1/16$ P. Which is 2005 South of N S or line
and 2025 1/2 E of West Sec lineAll The Posts are right N + S but are
not Right E + W as I have not run
through to NW corner of 23 so as to
Proportional the distances
work was done for Pete Egehoff.
He only cared for The South line
of NW NW which is correctMonrell's corner I was wrong
and my work is N, E

SEC 36-36-9 E Sept 30 - 1904

Went to S $\frac{1}{8}$ P on west sec. line set by Don
ann East Var 3 $\frac{1}{2}$ E

1500 Road runs E copied on Page 205

6310 Jeanie Road runs south

8441 fell 8 links N of $\frac{1}{8}$ P set by Don

Went west + set $\frac{1}{16}$ P. N P S 190 22 N 80 E 53

Commenced again at E $\frac{1}{8}$ P. an S line of sec

Run N Var 1.30 E

2276 $\frac{1}{16}$ Post on line county record

4552 set $\frac{1}{8}$ Post and ann E

2146 fell 92 N of $\frac{1}{4}$ P canceled line west

to $\frac{1}{8}$ Post for Road and canceled line

line E. Marked line South from $\frac{1}{8}$ P

to $\frac{1}{16}$ P for Road

SEC 36-36-9 E Oct 19th 1904 Posted on
South from E $\frac{1}{8}$ P. Var 3 $\frac{1}{2}$ E Page 209

4082 fell 105 W of $\frac{1}{8}$ P. ^{county record} Commenced

Went N + set $\frac{1}{8}$ P. N 18 N 39 E 16 $\frac{1}{2}$

Bands 30 S 16 W 42

Cancelled line N to $\frac{1}{4}$ P.

Towns 35 N Bet Ranges 8 + 9 E Nov 2 1904

Went to car of 13+18-19+24 set Post from 3 arg BT

Run North Var 4 $\frac{1}{2}$ E Sugar 26 S 23 W 16 $\frac{1}{2}$

4000 NO $\frac{1}{4}$ Post old line 50 links west

8000 " corner copied on Page 188

8312 Top of Braces Barn

120.00 NO $\frac{1}{4}$ Post set line 200 west

16546 fell 278 East of car 3 arg B.T. aspen zone

Went South and set car to 7.12.13.18

N 108 S 68 W 77 $\frac{1}{2}$

W.P. Stump 14 S 32 $\frac{1}{2}$ W 108 $\frac{1}{2}$

Horn 14 N 56 W 37

" 8 S 5 E 8 $\frac{1}{2}$

Went 3 + set $\frac{1}{8}$ P

County recorded

SEC 28-42-7 E NOV 11 - 1904

Went to N $\frac{1}{4}$ P. There is NO B.T. but a Post with
 $\frac{1}{4}$ S marked upon it. I went to NW cor found 2
arg B.T. set Post and ann E Var 5 $\frac{1}{2}$ E.

4075 found $\frac{1}{4}$ Post was on old line & fell 9
links North of it

8145 fell 137 S of corner which had been set
by someone a good many years ago from
arg B.T. which are now gone His bearings
are W.P. Stump 36 N 5 W 11 $\frac{1}{2}$
Aspen Stub. 8 S 68 E 25

The old line intersects East boundary 160
links S of Post. I am now satisfied that

N $\frac{1}{4}$ P. was set from arg B.T. which are
entirely gone. Made new B.T. W.P. in 22 S 14 E 73

Set $\frac{1}{8}$ P E of N $\frac{1}{4}$ P. Road Birch 85 60 E 38
at 2035 West of NE cor + 78 $\frac{1}{2}$ N of Road

South from N $\frac{1}{4}$ P Var 4 $\frac{1}{2}$ E

5272 West swamp bears E + W

5672 axes

7769 fell 80 $\frac{3}{4}$ East of $\frac{1}{4}$ P. 2 arg B.T. + Post

Went to E $\frac{1}{4}$ P. Set Post from stumps of arg B.T.s

Made one new bearing: W.P. in 16 N 26 $\frac{1}{2}$ E 13

Run West. Var 4 $\frac{1}{2}$ E

8277 fell. 138. N of Post 2 arg B.T. and new Post

Went to N.E. corner and run S Var 3 $\frac{1}{2}$ E

Took old bearings: W.P. S. 30 N 58 W 11 $\frac{1}{2}$ given

W Birch 85 68 E 25 above

4023 fell 18 $\frac{1}{2}$ E of $\frac{1}{4}$ Post

Went N + set $\frac{1}{8}$ Post: W.P. S. 36 N 12 E 39

Went west + set center: B.P. in 7 N 9 E 11

Do 8 S 45 $\frac{1}{2}$ W 23 $\frac{1}{2}$

Dist to N $\frac{1}{4}$ P 3937

" " S $\frac{1}{4}$ P 3832

" " E " " 4046

" " W " " 4231

S&E 28-42-7E Nov 12th 1904

West from $1/8$ P. S of NE corner Var 5245
4050. full 527 $\frac{1}{2}$ S of $1/8$ P which I set 1968 $\frac{1}{2}$ N of
center of section } VP in 14 S 76 $\frac{1}{2}$ E 30

South from $1/8$ Post West of NE cor Var 315
3982 full 11 $\frac{3}{4}$ E of $1/8$ P which I set at
2023 E of center } NO trees near
Went N + set $1/16$ P VP in 14 S 44 $\frac{1}{2}$ E 20

conected lines around four sides of
NW.NE. Finished Saturday Nov 12 - 1904

SECTION 21 42 7 E NOV 13 1904

North from SW cor Var 215E
3198 full 29. W. of $1/4$ Post 2 org B.T.

North from W $1/4$ P. Var 20E
46.67 full 5 $\frac{1}{2}$ links W of MC which
I set by evidence of R. J. Riley and
The foreman of his camp who had
*** dug up the B.T., but knew their location
Went South and set $1/8$ P at 24.24 N of $1/4$ P
which is proportional measurement

Went to center which had been set by Samson
I found his conected line East. Prolonged it West
3941 full 9 links N of $1/4$ Post Var of this line as
conected is 120E

*** VP in stump 15 N 89 W 70

MC: NO others

went to center again set instrument
at Post and on conected line from West $1/4$ P
run East

1100 Enter flowage.

2192 Stream 150 links wide runs North

3886 full 21 South of $1/4$ Post

Went West and moved center East 281.

and north 10 $\frac{1}{2}$ links.

as I could not get to N $1/4$ P. an account
of flowage. and as I could not run E
sic line for the same reason. I run North
from Temp center an a Var of 3 $\frac{1}{2}$ E
2204 -

as the distance from W $1/4$ P to NW
corner is 4817. and guessing at the distance
from E $1/4$ P to NE corner at 4000 chains
It make this dist as given.

Run E from $1/8$ P. South of NW cor
Var 7 $\frac{1}{2}$ E - 3860 full 95 S of Temp $1/8$ P
conected line West 1930 + set Temp $1/16$ P

Went to E Side of Lake and located MC
which is 150 E of where $1/8$ P is said to be
Run North from $1/16$ P. in NW $1/4$ to
Lake at a point 150 ch. West of MC
This is all I could do until it freezes

□ □ □

S&E 31-41-7-E NOV 18th 1904

Went to W $1/4$ P. set Post from both original B.T.
and run East Var 325 E

8172 full 266 S. of MC. which is $1/4$ P. set Post
from both org B.T. West down Marks Plain
D&C for correction 325 Change course 1° 50'
Conect Var from W $1/4$ Post 505
" " " " E " " 435

Went to N $1/4$ Post which is MC also set new
Post from E B.T. Tamara Birch is down end
cottons found S stump. Run S. Var 40E
1397 over Lake

1558 inter set arm of same Lake

2033 over

8092 full 89 W. of $1/4$ P. which I set from org B.T. 3 year ago
Change course 38' D&C for correction 109
Conect Var from N to S 438 + from S to N 345

S&E "31-41-7 E continued NOV 20 1904

Went N + set center at intersection of corrected 1/4 line
 Found distance to E 1/4 Post 3975
 " " " W " " 4197
 " " " N " " 3986
 " " " S " " 4106

2053 South of center set 1/8 Post { WPine 16 N 34 1/2 E 7
 West " " " " " " " " 18 S 54 W 12

3951 West of center set 1/8 Post { " " 26 N 41 1/2 E 22 1/2
 Bush 8 S 7 1/2 W 5 1/4

Went to South 1/4 Post + Run West Var 4 15 E

4290 fell 6 links South of corner to 31 + 36 R 6 + 7
 Went E + set 1/8 P. at 1995 W. of 1/4 P. { WPine 10 N 22 1/2 E 16 1/2
 " " " " " " " " 12 N 58 1/2 W 15

North from 1/8 P. W. of S. 1/4 P. Var 4 1/2 E

1272 met Swamp needle shows a var of 4 1/2 E

1780 over wet Swamp

4066 fell 67 1/2 E. of 1/8 P

North from SW corner Var 4 45

4013 fell 53 1/4 West of 1/4 Post
 Went S + set 1/8 Post { WPine 8 N 9 E 42
 Bush 8 S 23 W 5

Went from 1/8 Post S of center Var 4. 20 E

4246 fell 96 S of 1/8 Post
 Went E + set 1/8 P. Post { WPine 17 N 82 W 8
 " " " " " " " " 10 S 83 1/2 E 45

corrected lines around NW SW

North from 1/8 Post west of center Var 4 20 E
 3990 fell 19 W of 1/8 Post which I set 3 months
 ago when I cut up Sec 30

finished S&E 31-41-7 at 2.30 P.M.
 Nov 21 1904

I was cutting E 1/2 NW + NWSW

Section 9-41-7 E November 22-1904

Went to W 1/4 P. found East B.T. OK west on is down
 but marks are plain The east B.T. is 34 instead of
 24 links found Post I set last July

Run east Var 4 0 E

2400 Enter Tam + spr Swamp

1700 lean " " "

19 Enter Swamp

4000 North Shore of lake

6000 lean Swamp

8297 fell 177 South of 1/4 P. found 2 org BT
 and Post set 2 1/2 E of Warsaw also found

No had Run a random from NE corner

I offset 32 links west and run through
 on his Random Var 2 45 E

1400 Enter wet Swamp 1

1700 Small Pond

2000 over pond

2165 " wet marsh

4092 Section on there is 4 org BT at this cor
 but none of them hook up with goat
 field notes I believe this is the correct
 corner and that Post is OK. went
 South and set 1/8 Post at 2046 and 16 links
 East of Random Tam 9 N 2 E 106

NO other near

Went NE cor again + Run West Var 4 0 E

4198 fell 235 North of 1/4 Post which I set from NW
 B.T. It is down but marks are plain SW BT gone
 I made bearings { WPine 17 N 64 E 12

no other

Went East + set 1/8 P.

found course of East Sec line is 3 15 E

" " " West " " " 240 E

and I run South from N 1/4 P on 3 0 E which is
 an intermediate course bet Sec lines

3933 Intersect E + W 1/4 line as corrected 4070
 East of west 1/4 Post and 4227 west of East 1/4 Post
 which is 29 links less than west north Sec line

SEC. 8-36-11E cont DEC 9 - 1904

at 4140 1/2 East of N 1/4 P. and 8305 1/2 West of corner
to 3-4-9-10. and 7045 N of SE cor and 6810 South
of corner to 4-5-32-33-37-11 Tam 9 N 18 E 16

copied on Page 361 $14 S 66 W 14 1/2$

Spring Temp corner on N + S Rand 2 E 216

E + W .. N 314

found my Reindam from SE corner of 7045
(Temp. corner) was 216 West of true corner

course of line from SE corner to NE corner
is North 315 West East

course of line from N 1/4 P. to NE corner 750 E

Went South + set 1/4 P. at 3522 1/2 and 108

East of Reindam

Tam Stump 12 N 61 E 10 1/2

L Spruce 7 S 22 1/2 W 18

I found Russies NE cor of Sec 8 is 80 links
to far E and 287 to far South

Run West from E 1/4 P. Var 40 E

1000 needle shows 3 1/2 E

2000 3 E

8111 feet fell 135 N of 1/4 P set by Dors

corners

Hem 12 N 62 E 20 1/2

.. .. 13 S 36 1/2 E 27

Went to S 1/4 P. found. both org. BT OK

Run N. Var 2 1/4 E. Dors sent me

his notes for this line. he had run it through
and corrected same at center of Sec. distance

though is 6850 I am going to set center and use

his corrected line Reindam

3590 crossed my corrected E + W 1/4 line at 4600

chains looked for Dors corrected line but found

He had not corrected it at center. So I kept an

North end at 6810 fell 1013 W of 1/4 Post

Went South + set center Birch 6581817

B. Ash 8 S 82 W 41 1/4

change course 450. correct Var 620 N Dec. 1487

Distance to S 1/4 Post ~~4033~~ ~~4052~~ 4033

" " W " " 40 ~~33~~ 4054 4028

" " N " " 32 ~~27~~ ~~470~~ 3227

" " S " " 35 ~~83~~ 3583

1791 1/2 S of center set 1/8 P. Hem # 9824

10 N 30 W 26 1/2

1613 1/2 N
copied on Page 361

2019 W Elm 12 N 24 1/2 W 19

Birch 16 S 53 E 37

2016 1/2 E

East from 1/8 P. S of center var 5 1/2 E

3930 feet 314 N of 1/8 P. Spun 7 N 30 E 22

which set 17615 of S 1/4 P. Reindam 7 N 98 E 2 1/2

connected line west to 1/8 P

West from S 1/4 P. Var 5 1/2 E

4040 feet 42 1/2 N of corner

Went E & set 1/8 P. Hem 9 N 13 1/2 E 15

.. .. 14 S 31 1/2 E 38

Run N from 1/8 P. W of S 1/4 P. Var 5 1/2 W

3646 1/2 feet 69 E of 1/8 Post - connected onto
1/8 Post and prolonged line N 3400.

connected line South from 1/8 P. 1823 and
set Temp. 1/16 Post and met with P.C. to
West Sec line

Went to SE corner + Run S Var 12 0 E
2268 found 1/8 P. on line

This is all at present. I may
have to cut out SW, SW of 8 later on
finished DEC 13 1904
county record

SEC. 18. 41. 8.E. DEC 18 - 1904

Went to S.E. corner. Identified by Post Set by Dorr
and 2 org BT Stumps nearly gone

Run W Var. 40° E

1225 intersect west open marsh

2269 Small Pond

2550 over "

4491 fell 51 S of Meander which I set from org BT
can't var 3.20 - Doc. for correction 1.14

found a shortage of 269. as east m.e. is gone,
and shore of Lake has changed since U.S. Survey
was made. I proportioned the shortage between
SE cor + W m.e. and set $1/4$ Post at 3774 West
of SE corner and 43 links N of Random

Tam 38 83 W 42

no others near - open Swamp

Went E + set $1/8$ P. at 1887 + $2 1/2$ N of Random

Fin 12 N 3 W 794

no others

West from West m.e. Var $2 1/2$ E

3324 fell $2 1/2$ S of cor 2 org BT (Pine) others gone
found an overrun of 74 links. Proportioned
this overrun + set $1/8$ P. 1275 West of West m.e.
and 4 links N of Random

Birch 10 N 72 $1/2$ E 14 $1/2$

no 10 N 40 W 13

Run North from $3/4$ P. Var 40° E

Stream 30 runs SE

Same Stream SW

2773 over " " NWSE

3350 Same " " S.S.W

3550 over Stream " " "

5800 Leams Swamp

8101 fell 6 links W of $1/4$ P N BT OK SBT gone
corrected line S 4000ch

Went to $3/4$ found Birch BT it is a sub 4 ft high
The W Pine is a Norway course & distance OK
Run West Var $3 1/2$ E

SEC. 18-41-8E cont. DEC 20 1904

2760 Enter Swamp

4300 Stream 50 links wide runs South

5000 Leams Swamp

6050 intersect Lake

8000 Set line Stake went to N.M.E. + set flag. then
went to S.M.E. and chained N on Range line
to N.M.E. found an overplus of 18 links
Proportioned same + set $1/4$ P on ice at 3062 N
of S.M.E. corrected E+W Random line onto
same end at

2847 fell $2 1/2$ links N of $1/4$ P on ice

Went E + set center Tam 12 N 53 $1/2$ E 16 $1/4$
Spr 12 S 54 $1/2$ W 18 $1/4$

Distance to $3/4$ P 3872

" " W " " 3975

" " N " " 3934

" " S " " 4167

1936 E of center set $1/8$ P at Birch 10 N 56 $1/2$ E 25

" " 12 S 21 E 15

1967 N of " " " Cedar 12 N 58 E 7 $1/2$

Tam 10 S 81 W 6

Corrected line from center to N + E $1/4$ PostsSouth from $1/8$ P E of center 3.15 should be 3.454194 fell 46 W of $1/8$ PCorrected line W to $1/8$ Post

= DEC. 22-1904 = 2.P.M

North from $1/8$ P E of center Var $3 1/2$ E

1075 Stream 30 West

3260 " " East

3425 Bend in Stream 3980 across Bend

8994 fell 48 W of $1/8$ P. set by DorrWest from $1/8$ P. N of $3/4$ P Var $4 1/2$ E3914 fell $2 1/2$ N of $1/8$ P

Went East and set $1/16$ P. Pin 20 N 9 $1/2$ E 29
W " 16 N 75 W 10

Corrected line East and South from 116 Post
to $1/8$ Posts East + South. Finished in 18-41-8E

SEC 30-41-88 SEC 23-1904

Went to NE corner found orig BT set Post
and run south. Var. $42^{\circ}E$.

4060 found $2\frac{1}{4}$ Posts Went on South
5970 fell $15\frac{1}{2}$ E of MC Birch OK Maple gone
found an corner of 90 links
Proportioned same + set $\frac{1}{4}$ P. at 4061 $\frac{1}{4}$
and $10\frac{1}{2}$ W of Randam. Spr 4 N $57\frac{1}{2}$ $33\frac{1}{2}$
" " 4 S 87 W $22\frac{1}{2}$

my $\frac{1}{4}$ P. is $1\frac{1}{2}$ links W of the one I think was
set by Don. Had ξ knowin it was his I showed
not have set another

Run count run west Var $30^{\circ}E$

800 Levee Swamp

5900 Stream 30 runs SW

7994 fell $92\frac{1}{2}$ S of $\frac{1}{4}$ P. orig BT

Found a Shortage of 171. Proportioned

This Shortage. + set $\frac{1}{8}$ Post 1958 West of
 $\frac{1}{4}$ Post. as at 5874 West of $\frac{1}{4}$ which had
been set by Don at 3916 W of $8\frac{1}{4}$ Post

W Pin 18 N $19\frac{1}{2}$ $74\frac{1}{2}$

$\frac{1}{8}$ Post

No other

This $\frac{1}{8}$ P is Right bank of stream $7\frac{1}{2}$ N of
Randam. connected line E to center

Run N from center on Dons Rad. Var $4^{\circ}E$
2018 fell 13 links E of $\frac{1}{8}$ P set by Don. found
Don had cut up the SE $\frac{1}{4}$ I connected lines
from center N to $\frac{1}{8}$ P. and from $\frac{1}{8}$ P E to
Dons $\frac{1}{16}$ P.

Went to N $\frac{1}{4}$ P set by Don
found his ^{SW} random 195 S of $\frac{1}{4}$ P. run W
on it Var $4\frac{1}{2}E$

4023 fell 396 S of $\frac{1}{4}$ P Dons B.T.

found Don had set $\frac{1}{4}$ P at 1908 W of
NE corner. found a Shortage between
 $\frac{1}{4}$ P. and corner. 195 links Short I
Proportioned this Shortage and set $\frac{1}{8}$ P
1953 W of $\frac{1}{4}$ P and $292\frac{1}{2}$ N of Randam

SEC 30-41-88 SEC 24-1904 cont

W Pin 10 N $55^{\circ}13$

W Pin 14 S $10^{\circ}W 11$

connected line E to $\frac{1}{4}$ Post

= SEC 25-1904

South from $\frac{1}{8}$ P. W of N $\frac{1}{4}$ P. Var $4^{\circ}SE$
4024 fell 4 links W of $\frac{1}{8}$ P.
connected line N to $\frac{1}{8}$ Post

connected line from N $\frac{1}{4}$ Post E to $\frac{1}{8}$ Post
Rused Dons Randam for cornering I found his
 $\frac{1}{4}$ Post at 3908 W of NE corner and 195ch N of
Random corner was of N Sec line is $P\frac{1}{2}$
Sec for correction 5 links to chain
This finishes SEC 30-41-8

SEC 19-41-88 SEC 26-1904

Commenced at $\frac{1}{8}$ P W of SE corner and
run N Var $40^{\circ}E$ all swamp no timber
2000 set Temp $\frac{1}{16}$ Post and run west Var $1\frac{1}{2}E$
500 found This line was all open swamp
and stoped. went to South Post and
run N 500ch. all set Spence no timber
can see Rice Lake

Went to $\frac{1}{8}$ P E of NW cor and run

South Var $4^{\circ}E$

2000 set Temp $\frac{1}{16}$ Post

2500 put out Rice creek on Lake. To Soft to
+ Springy to get across can see 15 or 2000ch
no timber of east side Tam. + Spence

Went back to Temp $\frac{1}{16}$ P and run E Var $1^{\circ}30^{\circ}E$

2500 put out Rice Lake marked line E + S
from Temp $\frac{1}{16}$ Post

My reason for not running the $\frac{1}{4}$ line
in this section is on account of Rice Lake
which is open in places. and is open at
Shores. The swamp is Springy and mud
is deep cannot get across it
finished SEC 29-1904

SEC 35-41-8-E DEC 30-1904

I found the center of SE $\frac{1}{4}$ had been set. The SW & SE cut. So I began center of SE $\frac{1}{4}$ and run E Var $3^{\circ} 2' 08''$ 1990 feet 25 links N of $\frac{1}{8}$ P. set by Don
corrected line west to place of beginning finished DEC 31-1904

SEC. 29-42-9-E January 1st 1904

Went to $\frac{1}{8}$ P. S. of center set by DonRun N Var $2^{\circ} 46' E$

2008 feet 14 links E of center set by Don

corrected line S to $\frac{1}{8}$ Post

I had Don's field notes for these 2 corners. Tested posts with BT and found course and distance correct. Had been informed there was trespass along this line on N.E. & S.W. but such is not the case. There is timber left on N.W. & S.E. the whole length of line. Work was done for Salich & Wilder finished January 1st 1904

SEC. 33-43-9-E, January 5th 1904

Went to E $\frac{1}{4}$ P. which I set from org. B.T. in DEC. 1903. and Run South Var $3^{\circ} 45' E$

100 Enter Swamp

700 Leave "

3800 Links "

4120 feet 220 E of ~~the~~ corner NW Horn and

The Birch is ok Fir and SE " gone

Set new Post and corrected line N

and set $\frac{1}{8}$ P. at 2060 and 110 W of Run 1contd Var $3^{\circ} 08'$, DEC 5.58 Birch 15 S 79 W 23

Horn 15 S 47 W 22

Run W Var $3^{\circ} 45' E$ (E + W $\frac{1}{4}$ line) Var $3^{\circ} 45'$

8000. set line and Talley Stake and went to

W $\frac{1}{4}$ Post which I had set from org. B.T. Stumpsin DEC 1903. and run South Var $3^{\circ} 08'$ East

850 Enter Swamp, small Lake 100 west

1600 Leave " and " " " "

SEC 33-43-9-E cont Jan 7th 1905

4044 feet 48 E of corner. Set new Post from The Pine (which is a stump $3\frac{1}{2}$ feet high) and the SE Birch both ok. The NE Birch is gone also Sugar found stump placed Post in the hole where org. Post stood.
Went N + set $\frac{1}{8}$ P. Birch 16 N 16 W 17
Sugar 14 S 11 W $35\frac{1}{2}$

Picked up E + W $\frac{1}{8}$ line and at 7906 feet 29 links S of $\frac{1}{8}$ Post + I then corrected. See line N to $\frac{1}{4}$ Post and $\frac{1}{8}$ line from 6000 East to $\frac{1}{8}$ Post - I found the dirt from E to W $\frac{1}{4}$ P. 7909 and from $\frac{1}{8}$ P. to $\frac{1}{8}$ P. 7906. as it is impossible to run N + S $\frac{1}{4}$ line a count of Springs and open streams, and as I want to cut out N $\frac{1}{2}$ SE and NE SW I went E from $\frac{1}{8}$ P. S. of W $\frac{1}{4}$ Post and set Temp $\frac{1}{16}$ Post at $59^{\circ} 29\frac{1}{2}'$ and $22\frac{1}{2}'$ N of Random and run N 15° East
= January 1905 =

2031 intersect E + W $\frac{1}{4}$ line at 1975 which is only 2 links to far W corrected line S to Temp $\frac{1}{16}$ P.

SEC 32-43-9-E January 9th 1905

Went to SE car and run west Var $3\frac{1}{2}' E$ 4012 feet 14 links S of $\frac{1}{4}$ P. I set this Post in

DEC 1903 from NW B.T.

Went E + set $\frac{1}{8}$ P. Birch 14 N 44 W $3\frac{1}{2}'$ 1 Horn 7 S 31 E $32\frac{1}{2}'$

as I had run the N + S $\frac{1}{4}$ line last winter, and I want to cut out SESE I began at $\frac{1}{8}$ P. S. of E $\frac{1}{4}$ P. and run west Var $3\frac{1}{2}' E$

4132 feet 9 links S of Temp which I set last winter. Went East and set Temp $\frac{1}{16}$ P.

as there was no timber along the N line of SESE and the snow is so deep I did not run the E + W $\frac{1}{4}$ line but went $\frac{1}{8}$ P. west of SE car and run N Var $1\frac{1}{2}' E$

2211 feet 24 links N of Temp $\frac{1}{16}$ P. corrected line S + E
This is all in 32 DEC 10 1906 to $\frac{1}{8}$ Post

SEC 25-42-5-E March 15-1905

Went to S&C corner. found Post & set from orig. B.T. had been moved N about 250 ch. I found the stumps of org. B.T. & and set Post in its org. Position also found Harrigans had made quite a trespass on S.E. of 25. Run N Var 30° E. over level ground 4000 could not find 1/4 P. found an aspen stub 4 feet high which I believe was the S org. BT
11960 fell 1.66 ch East of 1/4 P. I set this Post from the original B.T. in Oct 1902 found it had not been moved. Went S and set 1/4 P. at 3986 1/3 N of S&C corner and 55 1/3 West of Randon

W Pin 20 S 47 1/2 W 103
No others near

Went from East 1/4 Post Var 40° E

4672 set Tally Stake on High Bank of Alder Lake 40 links East of the present shore of Lake. water is about 3 feet above its org. height and that shows High water mark

8000 set Tally and line stake on ice and went to M.C. on South shore of Lake. I had set a new M.C. at this point 2 years ago when Lake was high found my Post which is on high bank 59 links S of org. M.C. BT on Red oak 6 S. 78° E 18

W Branch 7 S 75 W 33

20 from 10 N 70 W 45

Run N from S M.C. to flag at N M.C. Var 2° W
3494 to Flag and M.C. which I had set from the W org. B.T. This B.T. is down but marks are plain and it has not moved from its org. Position except a falling. E. B.T. is not in its org. Position. Think I found it in ice near where it stood. found an over run of 100 1/2 ch. Proportional distance and set 1/4 P. on ice

3052 N of S M.C. and 432 S of N M.C. XXX

Went East and set M.C. at 4672 W of E 1/4 P. + 131 N of Randon

XXX Picked up E+W 1/4 line (random) and found at

7982 1/2 I was 2.24 S of 1/4 P on ice. M.C. on E+W 1/4 line is over a chain from shore of Lake 3 pin 8 S W

corrected line E to Tally 4.01 2000 ch " " 8 S "
W of E 1/4 Post. finished March 16 1905 588 Page 154

SEC 13+14-42-5-E March 27-1905

Went to M.C. on W side of Lake B.E. 12+13 and found both B.T. down. South tree was broken of 8 feet from roots North one was a fallen NW and body resting upon high bank and satisfied it had not been moved after it had fallen. Set an instrument and this tree and found 3 trees had been moved used N tree, set post on ice and run west Var 345° E

1662 fell 23 1/2 N of M.C. Both trees are dead but standing set Post on ice. Found a shortage of 36 links Proportional this shortage and set Temp. corner 151 1/3 ch from West M.C. and 1940 23 W of E M.C. on Place of beginning. and 2 1/4 links South of Randon. I then run South from Temp. corner Var 3 1/2 E

3650 Intersect Lake.

6300 over "

7770 fell 210 W of corner. The Norway Pin BT is OK W Pin gone. found Post & set 4 years ago.

Went N + set M.C. on N Shore of Lake at

3554 1/2 S of Temp. corner and 92 3/8 links E of Randon

4 Pin 16 N 3 1/2 E 11

" " 12 S 43 W 24

corrected line N to Temp. corner

When I was running South on Randon I found the needle gradually until I had reached the corner when I found I was running on an even needle it having changed 3 1/2 This is all her

□ □ □
SEC 32-37-9- April 10- 1905

copied on Page 232

Went to 1/8 P. S of center. Set by Dora Took his B.T.W.P. 12 N 5 E 15 1/2

Run N Var 10 E

1991 feet 68 W of center. Set by Dora on Iron Pump Point

Var 2 1/2 E = Corrected line S to 1/8 P. needle shows 1/2 E

at center on corrected line

Set flag a center and at 1/8 P. West Placed instrument
in line between flags Var 1 1/2 E

Set line stakes for fence from center to 1/8 P.

Went to 1/16 Post in center of SW 1/4 in round marsh
and set flag also set flag at 1/8 P. west of center

Placed instrument in line between flags

cut a line through between flags + set line
stakes. Went down to Repose

county record of field notes

□
SEC 35-36-9 E April 27- 1905

Commenced at NW corner set by Dora

and Run. E Var 2 1/2 E

6176 feet 52 links N of 1/8 P. which I set in June 1899

D&C for corrections 84/100

change course 30' correct Var 2 1/2 E

Went west and set 1/4 P. 4117 1/2 E of NW cor

Posted on } Birch 12 S 15 W 30 1/4

Page 208 } Fir 12 N 52 1/2 W 42

Corrected line west and set 1/8 P. at 20583/4

county } Pine Stump 18 N 6 E 120 1/2

Record } Birch 7 S 14 W 38

That is all at present □

SEC 31-37-9- April 29, 1904

Went SW cor. 1.09 B.T. and iron pin for Post

Run North Var 4 E copied on Page 231

1070 Flowage of Wis. River me. gone

2050 over River me. is 500 S. of flowage

4083. feet 111 ch W of 1/4 P. NW BT OK (Stump)

Iron Pin for Post. Needle shows 5 E on mag.

Random. a change of 1° see next Page

compare

SEC 31-37-9- continued April 29- 1905

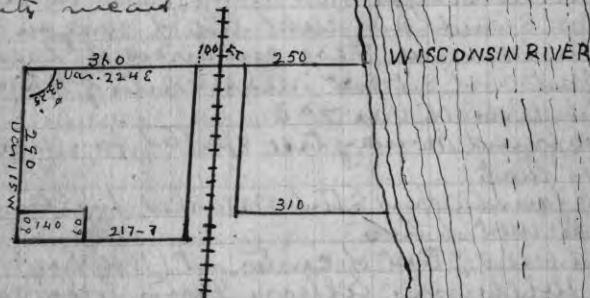
D&C for corrections 272 change course 131

Went South to Right bank of River and corrected
line south to corner, correct var starting from
SW cor. is 2° 24 E

I then run East from SE cor on Town line 350 feet
Thence N. Parallel with west line 457-7 feet to N. line
of C + NW R.R. Thence West Parallel with the south
line with the N. line of right of way of said RR
50 feet Thence N. Parallel with west line 453 feet
to Wis River as it is at present time Thence westerly
along the shore of River or flowage to the west
line of Govt lot 5 all of this is shown on diagram
on this Page

copied on Page 232. Should have been copied on
Page 231

county record



Posted on Parc 23 + 24 36-8-E 123
S&C "Line B&T" 24 + 25 May 7 - 1905

Set instrument on hill North of #1/4 Post
Set Flag at NW cor of 25 SW corner of 24 and
Placed ~~line~~ instrument on line between
Flags set line stakes for Patis for R Power co
County Found course of line at location of
Instrument, to be 6° 55' E Record

SEC. 26-40-8-E May 11 1905

Went to S 1/4 P. found org of BT had been
gubbed out of RR bed and lay 30 feet West
of its org position and west of wagon Road
also found Post which was setting on
west side of Wagon Road. also found that
some Surveyor had made new bearing
which stands on west side of Wagon Road
& harmonized these evidences of location
for Post and set Post near center of RR bed
and run N. Var 7° E

400 found Norway tree spotted for line 6
links west.

1400 found aspen stub marked for line 12
links west of line

4068 feet 35 East of center set (They say) by
William Allen. I am now satisfied
I started from a point 6 links to East
cancelled line S + set 1/8 P no B.T.

Went to center and chained west along fence
on E + W 1/4 line 1885 intersected N + S 1/8 line
There was a fence on this line. I took course of
same and run S Var 7 1/2 E

2034 set 1/16 P. and run E Var 3 1/4 E

1883 feet 5 links S of 1/8 Post cancelled line west
to 1/16 Post set line stakes on all these
lines so fence could be built straight
This is all

Survey of Road for Town of Newbold

SEC 4-37-8 E May 15 - 1905

Went to NE. cor of 48 E 5-37-8 E. found
The stump of N.E. B.T. OK also S.E. B.T. stump and
Post 1 foot below surface. Run S Var 1/2 E
2555 intersect Slough
3133 over "

4000 could not find 1/4 Post

7941. fell 33. % of cor 2 org = B.T. (Stump cut High)
Went N and set 1/8 P. by Proportional distance for
1/4 Post and setting 1/8 P. Equidistant between. Where 1/4
Post will be set. and see corner

Tom Stump 128 68 E 20 1/2

" " 108 45 W 29 1/2

Went N + set 1/4 P. by Proportional measurement

W Pine Stump 18 N 38 1/2 E 71

" " 24 N 41 W 13

Went N + set 1/8 P. by Proportional measurement

copied on Parc 132 county Record

East from W 1/4 P Var 1° E May 16, 1904?

850 Enter Swamp

1050 over "

3450 Enter " and set line stakes and
went to SE corner. found stump of N.E. B.T.
The SW tree is a stub 10 feet high badly burned
yet marks could be seen set new Post
and remarked old B.T. Run N Var 1 1/2 E

Found the trees marked for org line all along
and found I was heading to far East 2857
found old line 45 links west

3455 intersected Gate. found Stump of S.E. B.T.

SW one is gone. set Post and made new bearings

Y Pine 15 S 22 E 10

W " 18 S 26 1/2 W 34

Went South and set 1/8 P. by Proportional measurement
as I found a shortage of over near of 1.33 ch I set
1/8 Post at 2080 3/4 } No B.T. : : : : "

SEC 4-37-8E continued May 17 1905

Went to north side of lake, found Stump of the
B.T. for me. Remarked Stump and set new Post
made new bearing $\frac{1}{4}$ Pin 12 N 3 W 79 1/2

ORG B.T. N 25 W 90 down marks ok

Set instrument at this M.C. and lined onto
me on South side of lake, found course of line
agrees with line from SE corner to S me "nearly"
Set Flag at S me and took the distance across lake
by use of Stadio wires. got distance is 2293
my measurement is 2523

1/4 P of distance given by U.S. Surveyors had
been correct, would be 678 ch N of South me.
but as there is an overrun of 2.30 ch across lake
& proportioned same which brings 1/4 Post
746 ch N of South me.

Set Flag & N.M.E. and instrument at S.M.C.
With telescope on Flag Vernier read Var 140 E
Turned of a right angle and West to West shore
line of lake a distance of 1100 ch.

I then prolonged my E & W Random to
5610 ch and found I was 780 South of where 1/4
Post would be in Lake.

Changed course of Rand S. 57 corset Var 9 0 E

SEC for carrying E & W 1/4 line. 13.90/100
West West and 37.53 E of W 1/4 P. offset 521.40
into line and corrected line West to 1/4 P for
Road. also corrected E Sec line from 2000 ch
South to SE corner

copied on Page 132 County Record

I found the whole distance from West
1/4 P. to me on S side of lake 67.14 ch a
Shortage of 1286 ch

Did not Run N & S 1/4 line

SEE Book No-5. Page 45

Survey Bill of Road for Town of Newbold

Commenced May 16 1905

Completed

Commencing at NW cor of SEC 4. Township
37 N Range 8 E

Thence South on SEC line bet 4+8 to a Stake 2500 ch
and set Post $\frac{1}{4}$ Pin 8 N 27 1/2 E 51

Thence South 18 1/2 E 434 "

" " 20 W 454 "

To a Stake which stands on Sec line 3343 South
of starting point $\frac{1}{4}$ Pin 16 N 84 E 71

Thence to 1/4 Post 658 "

To 1/4 Post from Sec corner is 4046 "

Thence East on 1/4 line in SEC 4 to a Stake
which stands 2850 ch E of W 1/4 2850

Thence S $\frac{1}{4}$ Pin Stump 16 N 35 W

" " " 16 S 28 W

Thence South 48 0 E 220

" " 58 1/2 " 748

" " 63 1/2 " copied on Page 1219

" " 48 - " 133 County record 390

" " 55 - " 341

" " 55 1/2 " 835

" " 69 1/2 " 585

Crossed Section on this corner at 455. at
2403 North of Sec corner that is &

crossed line into SEC 3 90 links

Thence South 3 1/2 East 234

" " 36 - West 184

To SEC line bet 3+4 2000 ch N of Sec corner

Thence South on SEC line 2000

To Corner of Sections 3-4-9+10 136.52

Thence East on Section line 1531

May 18 1905 183

Thence North 42 E 745

" " 66 1/2 " 983

" South 78 " 522

" " 72 " 262

" " 83 " 1798

over

Survey of Road cont. May 18th 1905

Distance Brought forward		17888
Thence North 81° East		827
" East		3089
" South 53 1/2° East		483
To SEC line BET Sections 2 and 3 - 24 links North of Corner to Sections 2-3-10 and 11		
Still South 53 1/2° East		41
To SECTION line BET " 2+11. 35 links East of Same Sec ⁿ corner	22324	
Thence South 36 1/2° East		544
" " 6 1/2 " "		262
" " 53° West		658
" " 20° East		212
" " 20° East		285
" " 57 1/2° "		416
" " 27 1/2° " (To old camp)		373
" " 29° West		2055
" " 4° East		2067
" " 69 1/2° " magnetic course		749
" " 16° "		592
" " 41 1/2° "		585
" " 16 1/2° "		398
" " 28 1/2° West		466

To and 1/8 Post on section line BET SEC " 11 + 14 and 2308 1/2 East of SEC corner

Thence South on the west 1/8 line in SEC 14 4047

To 1/8 Post west of the center of " 14

Thence East on 1/4 line " 14

To East 1/4 Post " 14.6392

The courses and distances here given are

The center and line of Road

Dated May 22 1905

Copied on Page 134

County Record

SEC 14 " 37-8 Brought from Page 164 May 21-1905

Corrected line North to 1/8 P. and East to 1/4 Post Set 1/8 Post East of center at 2042.

Copied on Page WPine Stump 20 N 12 E 129
139 County NO Others near.

Record

SEC 20-37-7E. May 24 1905

West from E 1/4 P. Var 115 West

I have run this 1/4 line before but could not find my Tally Stakes as they were in Road changed my course 4 1/2°

1246 Wagon Road Copied on Page 220
8986 here 39 links N of 1/4 Post. The SW BT is a stub 4 feet high marks Plain. Made new bearing WPine Stump 18 N 15 1/2 W 29
no others

Went to N 1/4 Post found Post Set by Waller from org B.T. They are both gone found Stump of one Set new Post & made new bearing

WPine Stump 18 S 77 1/2 E 93 3/4
no others

Run South Var 4° E. (Am sure now) should be 3° W 7808 feet 970 E of 1/4 P. in Swamp and flavage.

The org B.T. are nearly gone had Set new Post and made new bearings. Water was too deep to set up instrument and get their bearings

Went N. and center at intersection of corrected 1/4 line

WPine Stump 14 N 37 1/2 W 13 3/4

" " " 14 S 37 1/2 E 34 1/2

County Record also balance of this Section

Distance N 1/4 Post 3945

" S " " 3863 on Page 166 this book

" E " " 4451

" W " " 4535

2225 1/2 East of center 1/8 P. Top and center of Long Rock N 31 W 30

no trees near

1931 1/2 South " " " WPine Stump 16 N 61 E 88

7.30 W of Random no others

carried to Page 166

SEC 24-37-8-E May 18⁹ 1904Went to NW corner Found Stump of org BT
Which stands in SEC 14. NW tree goneSet new Post and ^{Trim} Var 3 1/4 E

500. Enter open Marsh +++ made Bearing

850 over " " W. Pine Stump 19 S 69 W 26 1/2

1650 Enter Swamp copied on Page 139

4575 over " "

4617 fell 35 links South of 1/4 P. found The

Pine a Stump 4 feet high Mark OK

found Stump of B Pine marks gone

Set new Post. and went West and Set

1/8 Post W Pine Stump 12 S 77 1/2 W 28 3

no others near

county = May 19 - 2005 = Record

Run South from W 1/8 P. on N Sec. line

Var 3 1/2 E

4000 Set line Stakes and went to 8 1/4 Post Set by
M. E. Morrill. I found that the org. bearings
were gone and he had run from corner to cornerand had Set 1/4 P. Equidistant between bears and
had Set 1/8 P. South of 1/4 P. I Set instrument at 1/4 P

turned same on line at 1/8 P. found needle

showed a Var of 2 1/2 E. Turned off a right angle
west. and changed it to 89° 00' on a Var of 3 1/2 E

found distance to 1/8 P South is 2030 ch

Run west 4000 turned off an angle of 91° N.
not being same course as S S E line

needle shows a Var of 2 1/2 E. Run north

4030 fell 54 links E of 1/4 P. Went South and

Chained South from Starting point on E + W 1/4 line

30 links which makes 4060 ch South of 1/4 P

from this point I run west on corrected course

of 1/4 line 54 links. This makes the NE 1/4. 4060
ch N + S and 4084. E + W Set center of Section

W Pine 10 N 34 1/4 W 88

" " 8 S 34 E 83

copied Prolonged this 1/4 line West 2308 1/2 and Set

B Pine 8 N 50 E 40

" " 10 S 46 E 43. S E E Page 163

SEC 10-37-8-E May 18⁹ 1905

Went to NW corner where I had set Post from

org BT. May 16 - 1905 Run E Var 3 1/2 E

1800 Enter Tami + Cedar Swamp

4210 fell 39 links North of 1/4 P.

Found Stumps of Both org B.T. Marks

were Plain Set new Post

went west and at 1531 East of corner

corrected line west to corner for

Road copied on Page 138 county Record

as the Road did not follow the SEC.

line any farther East cannot say much

about it kept there is a few chains of

Swamp near NE corner. and that I found

The org B.T. for the NE corner SW tree is

down marks on top and very Plain.

The East B.T. is a Stub 10 feet high marks

Plain. Set new Post and made new

Bearing W Pine 10 N 72 W 80

SEC 8-37-8-E May 22 1905

Went SE corner found Post and other
indications of cor found two stumps whichagreed with field notes in every particular
Except the Iron marks were buried off Set new

Post and made new Bearing W Pine 14 N 3 1/2 W 31 6

copied on Page 136

Run west 3 1/2 E county record

299 center of Cor North western R.R track

826 fell 382 N of corner. This corner is buried out.

still I found what I believe to have been the org BT

I found the line between 17+18 and 8+17 and at a point

where they crossed I found these stumps which

bring Post in line both ways Set new Post and
made new bearing W Pine Stub 14 S 83 1/2 W 97

" " Stub 12 S 77 3/4 E 114

" " Stub 30 S 5 1/2 W 128 1/2

" " — 18 N 61 1/2 W 222 1/2

" " — 12 N 61 E 59

SEC. 32-36-4-E. cont. June 1st 1905

of North B.T. South gone. Made new bearing

W. Pine Stump 24 S 61 W 58 1/2
No other

Went S and set 1/8 P. at 1966 S. of North 1/4 P.

Spur 9 N 53 1/2 E 14 1/2
Hem 7 N 43 W 22

Went South and set center of Sec

Birch 24 N 68 E 6 1/2
Hem 8 S 36 1/2 W 28

Distance to E 1/4 Post 4158

" " W " " 4035

" " N " " 3932

" " S " " 3968

2079 East of center set 1/8 P. } Birch 8 N 59 W 29

1984 South " " " " } W.P. Stump 15 S 41 E 64 3/4

1984 " " " " " " } Birch 16 N 32 W 65 1/2

Hem 8 S 61 W 37 1/4

2017 1/2 West " " " " } W.P. Stump 20 N 25 W 26 1/2

East from S 1/4 Post Var 4.25 E

3999 feet 1/2 link of corner. which I set in road from

SE B.T. (a stub 6 feet high Marks Plains) and

Stump of NE B.T. went West and set 1/8 P
new bearing for corner. W.P. Stump 34 S 76 E 33

Hem Stump 24 S 37 W 44 1/2 } no other

copied on Page 2 County Record

- June 2nd 1905 =

North from Sec cor Var 4 1/2 E

200 Stream 20 SE

600 Bend in Same Stream

1305 center of 500 RR track

3973 feet 108 1/2 West of 1/4 P. converted South
and set 1/8 Post } Hem 10 West 197

} no other near

West from S 1/8 P. on E Sec line Var 4 1/2 E

1300 Stream 20. SE.

4080 feet 5 links South of 1/8 Post

SEC 32. 36. 4. E. continued June 2nd 1905

North from E 1/8 P. on South line of Sec Var 4 1/2 E
3970 feet 6 links West of 1/8 Post. Went South and
set 1/16 Post in center of 3E 1/4 } Birch 10 N 49 1/2 W 3 1/2
.. 18 S 5 E 23

West from S 1/4 P. Var 4 1/2 E (Same corner as line East)
3994 feet 20 S of corner. Identified by Post in road
and Stump of NW B.T. Made new bearing

W.P. Stump 24 N 72 3/4 W 139

Went E and set 1/8 Post } W.P. Stump 36 N 18 W 28 1/2
no other

North from S.W. corner Var 5 1/2 E

3945 1/2 feet 26 1/2 East of 1/4 Post Went South and

set 1/8 Post } W.P. Stump 36 S 5 W 83

} no other

East from S 1/8 P. on W Sec line Var 430 E

4003 feet 48 N of 1/8 Post

South from 1/8 P. West of center Var 5 10 E

3958 feet 5 1/2 W of 1/8 P. Went N + set

1/16 P. } W.P. Stump 20 N 31 E 50.

} no other

Went E and converted line to 1/8 Post
finished June 3 at 4 P.M.

copied on Page 2 County Record

170 Fin Bet 23+24. 36-5E June 4 1905

Went to cor to 23-24. 25. 26. let Post from stumps of both orgⁿ BT. run N Var $3\frac{1}{2}$ E
2950 Enter Swamp
3995 feet 109. W of $\frac{1}{4}$ P. NW tree down marks plain
SE tree ok run N Var $2\frac{1}{2}$ E
5500 Enter hay meadow
2800 Little R. E. River
4025 feet $37\frac{1}{2}$ N of corner set Post from N W BT
Made new bearing } Stump Pin 12 S 52 $\frac{1}{2}$ W 41

corrected line S to $\frac{1}{4}$ Post then corrected South
and set $\frac{1}{8}$ P. } WPin Stump 20 N 2 W 4 (marked)
} Stump Pin 10 N 36 E 74

corrected line S to corner copied on PAGE 4
finished at 5 P.M. county record

SECTION line BET 17+18. 40-8-E June 18th 1904
Went to come to 7-8-17-18. found stumps to both
orgⁿ - BT. The $\frac{1}{4}$ Pin which stands NW is a stub 4 feet high
and has some of the marks plain. The $\frac{1}{4}$ Pin which stood
NE is a stump 16 inches high with BT. ok Set Post and run
South Var $3\frac{1}{2}$ E

1632 Intersect Small Lake
2432 run " " and Enter Swamp
3000 leave Swamp
3300 Enter " "
4000 Hasty feet 79 East of $\frac{1}{4}$ P. found Post and SE BT down
Made new bearing } WPin 10 N 85 W 59

corrected onto $\frac{1}{4}$ Post and run South and corrected course
needle shows Var 2.33 E

3309 Intersect St Germain Lake & set MC
} WPin 18 N 27 W $15\frac{1}{2}$
} no other near

found a Shantay of 291ch Proportioned this
Shantay as 1600ch into 2000ch and went N + set
 $\frac{1}{8}$ Post at 1838. South of $\frac{1}{4}$ Post } no bearings Post stands
} in open Swamp

chained East 1000 ch Hunter loses cottage. house and
garden finished at 4.30 P.M.

SEC 23 + 24-41-6. June 26+27-1905 171

Went to NW cor of 24. found Post and orgⁿ
BT set Post and run S. Var $3\frac{1}{2}$ E
175 leave Swamp
400 needle shows. Var of $3\frac{1}{2}$ E
3917 feet 184 $\frac{1}{2}$ West of $\frac{1}{4}$ P both orgⁿ BT
Set new Post and run E Var $4\frac{1}{2}$ E
1209 set MC. on High bank of Trout Lake 50 links
from Shore line of Lake } Book 22 S 4 E 68

Went back to $\frac{1}{4}$ P. BET 23+24 and
corrected line N + set $\frac{1}{8}$ P. at 1958 $\frac{1}{2}$ and
set 94 $\frac{1}{4}$ E of Randⁿ } aspen 10 N 49 W $2\frac{1}{2}$
} WPin 17 N 68 E 48

corrected line N to corner

Run west from NE corner of 23 an see
line Var $1\frac{1}{2}$ W

20⁵¹⁴~~14~~¹⁷ Set Post in Swamp no BT to set.
Run south from this Post Var $6^{\circ}05$ E
1958 $\frac{1}{2}$ Set temp Post and East Var $1\frac{1}{2}$ W
515 feet $\frac{1}{4}$ link South of $\frac{1}{8}$ P corrected west
#514 $\frac{1}{2}$ at Set Post and corrected line N ~~#~~
1958 $\frac{1}{2}$ E. Post in Swamp. This cuts off the
East 10 acres of NE NE 23

Went back to NE cor of 23 and an month
 $6^{\circ}05$ or on same course as line South of
corner Prolonged this course was
ascertained by turning Tiled cope on to
corrected line South of corner run North
to Lake and set MC } Birch 8 S 71 $\frac{1}{2}$ E 13 $\frac{1}{2}$
} " 8 S 87 $\frac{1}{2}$ W 18

SEC 1-40-8. July 12 1905 continued

South from NE corner Var 22 1/2 West
3666 feet 329 East of 1/4 P. which I set from
NE B.T. an aspen stub 30 feet high marks
near plain. corrected line N to corner
corrected Var of this line is 2740 West
made new bearing for 1/4 P. W 18 S 10 W 9

South from N 1/4 Post Var 15 00 W

1700 intersect very wet marsh

2250 over " " "

2575 intersect " " "

3250 over " " "

7068 feet 645 west of 1/4 Post which I set from
stump of E. end stub of W B.T. both badly
burned but marks were discernible
Went N and corrected line on S side of
wet marsh. I think center is in marsh
= July 13 1905 =

Went to west 1/4 P. Set Post from both B.T. tho
Pine is down Birch dead. Made new bearing
W Pine 14 N 7 1/2 W 7 links
no other

East from W 1/4 Post Var 3.05 along timber line

3390 Pond

4007 over Pond

4200 intersect another land

4766 over " "

4974 intersect N+S corrected line 3113 S of N 1/4 Post

7968 feet 1118 N of 1/4 Post. Course of E+W 1/4 line
is 2.10 E Var. course of N+S 1/4 line is 1005

W Var. So the corrected E+W 1/4 line crosses N+S

1/4 line at 4956 ch E of West 1/4 P. and 3187

South of N 1/4 P. + set center of Section xxx

Dist. to N 1/4 Post 3187

" " S " " 3871

" " E " " 3012

" " W " " 4956

+++

SEC 1-40-8 continued July 15-1905

Set 1/8 Post E of center at 1506 West of E 1/4 Post and
Equidistant between center + E 1/4 P.

W Pine 16 N 72 W 5

W Pine 15 N 47 E 33

North from 1/8 Post E of center Var 18.48 W
3359 feet 218 E of 1/8 P. I made a mistake of 30 in
figuring course of this line. corrected
This line South to 1/8 P correct Var 15 00 W

South from E 1/4 P. Var 3 1/2 E

3870 feet 122 W of corner which I set from Pine
+ NE Birch they are both nearly gone just
enough left to identify them as the "orig" B.T.
The other 2 are gone made new bearing.

W Pine 18 N 24 1/2 W 16

" " 16 S 88 E 30

correct Var 5.20. corrected line N to 1/4 P

I did not set NW cor as I did not need it
It belongs 3070 E of corner to SEC. 35+36. 40-8

SEC 12.40-8 E July 15.. 1905

South from NE corner Var 4 00 E

3953 feet 5.11 W of 1/4 P Set Post from orig B.T.
They are both down and marks nearly gone
Made new bearing W Pine 12 N 65 1/2 E 61

W " Stump 16 S 12 W 25

corrected line N 20 00 ch NENE is cut also NSE

= July 16 - 1905 =

South from E 1/4 P. Var 30 E

3978 feet 4 links E of cor to 7-12-18-13

corrected line N to 1/8 P which had been
set by Don. I wanted to cut the S 1/2 of SE
into N+S 308 am west from E 1/4 P 100 ch to
2057 found 1/8 P. am N Var 10 E 100 ch to
then Swamp which extends north through
S E and no line is required Pine

SEC 2 40-8-E July 17-1905

Went to E. 1/4 P. which set a day or two ago
found Random going west Var 5° E

711 Small Pond

946 over "

2013 here 40 links S of Same ones 1/8 P

3575 Interset Lake. Then went to 1/8 P N
of S. 1/4 Post took the course of N+S 1/4 line as
run by Same ones Var 7 1/2 E Run North

1350 Wet Marsh

2132 over "

2900 Interset Lake canceled line from E. 1/4 P
west to Same ones 1/8 P.

This N+S 1/4 line should be run an at least
10° West Var and would go east of Lake. The
distance from where center would & should
be is not over 3000 ch from E. 1/4 Post.

I know none of the lines in this is right
unless it is the E+ W 1/4 line. but I have
left them as I found them and prolonged
N+S 1/4 line as it was started

SEC 27. 41-8 E. July = 17-1905

Went to SW corner in the file on the
West side of S.T.P. R.R about 20 rods South
of Plum Lake Station and run E

2005. feet 34 links N of Var 4° E

1/8 Post Set by Don connected onto this
1/8 P. and prolonged line East

1995. feet 5 links S of 1/4 Post

Went back to 1/8 P. and run N
Var 4° E and marked line for 2000 ch

INDEX.

INDEX.

Section.	TOWNSHIP.		RANGE.		CITY OR VILLAGE.	ADDITION.
	N.	S.	E.	W.		
4	36		9			
36	42		5			
35	"		"			
25	"		"			
30	38		9			
8	"		"			
6	42		7			
7	"		7		Survey of islands	
23	38		9			
25	37		8			
9	38		6			
12	37		10			
25	37		8			
17	39		5			
9	36		9			
20	37		9			
32	38		8			
35	39		5			
2	38		5			
25+36	39		6			
26	37		9			
35	"		9			
36	41		9			
12	40		9			
36	37		9			
4	36		9		Road	
31	37		10			
2	41		11		Hockey 1st add	
5	36		8			
25	40		6			
34	36		8			
27	36		6			
28	"		"			
17+28-34	"		"			
8-17-20-28	"		"			

INDEX.

FOR WHOM SURVEYED.	WHEN			Page.
	Day.	Month.	Year.	
Westly Wilson	24	DEC	1902	1
R.H. Southgate Chicago	31	"	"	1
"	4	January	1903	4
"	6	"	"	6
Manasha Woodenware Co	14	"	"	6
"	15	"	"	7
M.T. Depauw	23	"	"	8
"	27	"	"	11
Erick Johnson	5	FEB	"	14
Leon the assyrian	9	"	"	"
Ole Berg et al	10	"	"	16
Woodruff & McGuire	15	"	"	19
Abiam Lion (assyrian)	21	march	"	21
United States govt	26	"	"	21
E.Q. Sturdefant	30	"	"	24
Jessie Cohen	16	april	"	25
Town Newbold	18	"	"	25
D. Whimman	22	"	"	27
"	25	"	"	25
United States Richardson	25	may	"	28
Blue Grass Land Co	3	June	"	30
"	4 to 20	"	"	32
Stevens Lbr Co	9	"	"	34
"	12	"	"	35
BLUE GRASS LAND CO	26	"	"	41
Town of Felician	1	July	"	42
Blue Grass land co	27	June	"	42
WIS Lbr & Bark Co	8	July	"	43
" Vermorel Co	10	July	"	45
James Morgan	7	July	"	48
Jo E. Mankka	6	Sept	"	48
Town of Cassion	10	"	"	51
"	11	"	"	50
"	12	"	"	52
"	15	"	"	54
"	"	"	"	55
"	"	"	"	56

INDEX.

Section.	TOWNSHIP		RANGE.		CITY OR VILLAGE.	ADDITION.
	N.	S.	E.	W.		
17-20.21						
28.29	36		6			
34	43		8			
35	"		"			
36	"		"			
10.	44		2			
18	44		2			
29	44		2			
7	42		6			
9	42		6			
17	"		"			
1	"		"			
36	43		"			
35	"		"			
2	42		"			
14	36		"			
22	"		"			
23	"		"			
26	43		9			
27	"		"			
33	"		"			
32	"		"			
29	36		9			
21	35		10			
1	36	SEE 3424	8		For C. Daint	Page 48
425	"		9			
32	37		9			
24	36		8			
6	41		8			
Line Bet Towns	41+42	R 8.				
36	36		7			
32	37		9			
2	36		6			
35+36	37		6			
25+26	37		6			
30	37		7			

See Page 64 on look in may
1904 indef

SEE 3424 For C. Daint Page 48

also line Bet 236 24 - 36-7

INDEX.

FOR WHOM SURVEYED.	DATE SURVEYED.	WHEN			Page.
		Day.	Month.	Year.	
Town of Carson et al.	17.18.19	Sept		1903	57660
Goodyear	22	"		"	60
"	25	"		"	61
"	29	"		"	63
Dunbar + Brozelle	17	Oct		"	66
" " "	24	"		"	69
" " "	31	"		"	72
Harrigan Bros	11	Nov		"	74
" " "	12	"		"	75
" " "	13	"		"	75-76
" " "	14	"		"	76
" " "	15	"		"	77
" " "	16	"		"	78
" " "	17	"		"	78
Souson et al	1	Dec		"	91
Peterson + Fred Garland	3	"		"	82
Fred Garland	4	"		"	"
Brown Bros	11	"		"	83
" " "	17	"		"	86
" " "	21	"		"	88
" " "	22	"		"	89
Shediger et al	30	"		"	"
Gus Kinsman	18	Jan		1904	91
Ernest Nieman	12	Feb		"	95
Kincaid + Stacy	6	Apr		"	96
Eurson et al	5	May		"	96
Crescent town of	5	Oct		1903	64
Salsicht + Wilson + Stange	3	June		1904	97
" " "	8	"		"	99
" " "	9	"		"	99
Town of Woodbans	13	"		"	100
Charles Calkins	15	"		"	101
Town of Carson	16	"		"	101
" " "	17	"		"	102
" " "	"	"		"	"
" " "	"	"		"	"

INDEX.

Section.	TOWNSHIP.				CITY OR VILLAGE.	ADDITION.
	N.	S.	E.	W.		
Survey of Road for town Cassian						
29+30	37		7			
36	34		6			
35	"		"			
Survey of Road						
11	36		9			
29	37		6			
28.33	38		8			
30	36		9			
8	41		7			
19	"		"			
30	"		"			
34	37		9			
28	"		"			
32	41		8			
Survey of Road for town present in 23-26-27-36-38						
35	36		8			
27	"		"			
18	42		"			
24	42		7			
17	42		8			
20	42		8			
21	42		8			
24	36		9			
26	"		"			
36	36		8			
12	35		8			
28	42		7			
21	"		"			
31	41		"			
9	"		"			
19	36		11			
8	"		"			
18	48		8			
30	41		8			
19	"		8			
35	"		"			

Range line bet 8 & 9 Town 35

INDEX.

FOR WHOM SURVEYED.	WHEN			
	Day.	Month.	Year.	Page.
Town of Cassian	18	June	1904	103
"	21	"	"	104
"	22	"	"	105
"	"	"	"	"
"	"	"	"	106
Hardell	26	"	"	107
Hardell Whitson Johnson	08	July	"	108
Town of Newfald	6	"	"	109
Swan Lynne	11	"	"	109
Houlton Bros	13	"	"	110
"	18	"	"	112
"	21	"	"	114
Town of Pine Lake	30	"	"	116
Goldstrand	1	Aug	"	117
Blue Grass Land co	11	"	"	118
Town of present	5	"	"	120
Regal Et al	28	"	"	122
Rhinelande Kaimen co	3	September	"	124
Goodyear Lth co	10	"	"	125
"	11	"	"	125
"	12	"	"	127
"	14	"	"	128
"	15	"	"	128
Peter Egloff	27	"	"	129
Town of Pineau	30	"	"	132
W. Hardell	31	"	"	132
Rhinelande Iron co	4	Nov	"	"
Brooks & Ross	11	"	"	133
"	13	"	"	134
Houlton Bros	17	"	"	135-6
"	22	"	"	137-8
Memasho w.v. co	1	Dec	"	139-
"	6	"	"	141
Salsich & Wilson	18	"	"	144
"	23	"	"	146
"	25	"	"	147
Brown Bro Lth co	30	"	"	148

INDEX.

Section.	TOWNSHIP.			RANGE.		CITY OR VILLAGE.	HOW NOT ADDITION.
	N.	S.	E.	W.			
29	42		9				
33	43		9				
32	"		"				
Island in Hasbrook Lake Sec 26-39-7 E							
23	36		8				
25	42		5				
13 44	"		"				
25	"		"				
23	36		8				
32	37		9				
35	36		"				
31	37		"				
23	36		8				
24 & 25	"		"				
26	40		8				
4	37		"				
10	"		"				
Survey of Road for Town of Newbold in							
14	37		8				
8	"		"				
20	37		9				
31	36		4				
32	"		"				
23.24	"		5				
17.18	40		8				
23.24	41		6				
13	41		"				
34 & 35	39		7				
25	36		10				
1	40		8				
12	"		"				
2	"		"				
27	41		"				

INDEX.

FOR WHOM SURVEYED.	WHEN			Page.
	Day.	Month.	Year.	
Salsich & Wilson	1	January	1905	148
Brown Bros & Co	5	"	"	148
" " " "	9	"	"	149
U.S. and T.W. Harrington	6	FEB	"	150
James Gauries	8	March	"	151
Robert Louelles	15	"	"	152
Flambach & Co	28	"	"	153
" " "	29	"	"	154
R. R. Co	8	Apr	"	155
Reopke	10	"	"	156
Burgman & al	27	"	"	156
Ernest Kepler	28	"	"	156
R. Power & Co	7	May	"	159
" " "	"	"	"	158
Bolger Bro	11	"	"	158
Town of Newbold	15	"	"	159
" " "	"	"	"	165
Sec 4-10 37-8-E	"	"	"	161-2
Town of Newbold	19	"	"	164
" " "	22	"	"	165
Pine Lake & al	28	"	"	163-5
Town of Lynn	30	"	"	167
Uncton Unionen	1	June	"	167
Town of Lynn	4	"	"	170
Blue Grass Land company	18	"	"	170
J.W. Babcock	26	"	"	171
John man	27	"	"	171
U.S. govt	2	July	"	172
Manasota Row Co	9	"	"	172-3
G.A. Goodyear	11	"	"	173-8
" " "	16	"	"	175
" " "	17	"	"	176
" " "	"	"	"	"