

30

52

9-62

5-6

9-62

PAGES 4-33
BLANK

34 SEC 5-39-6 NOV 15" 1922

Set West 1/8 Post on N line
 10 years ago. This date placed on
 iron pipe 1 1/2 inches in diameter
 and 3 feet long. driven 4 inches
 below surface. My bearing marks
 several years ago are nearly
 gone. removed my Post as it is
 nearly gone. d W Pine tree 12.
 N 3 1/2 E ~~to~~ marks made on
 tree. Post is in center of road.
 a line going South has been
 cut out for street

D H Vaughan
 copied from Book 9 Page

PAGES 35-40

BLANK

Began. at S $\frac{1}{8}$ P bet 10 + 11

Ran south 15 or so

966 feet to line prolonged to Lake

found the angle of line prolonged

from $\frac{1}{8}$ P. to line prolonged between

lots 11 + 12 to be 56° . It is 202 feet to shore

of Lake from line from $\frac{1}{8}$ Post to

Shore of Lake

1. The first part of the
 2. The second part of the
 3. The third part of the
 4. The fourth part of the
 5. The fifth part of the
 6. The sixth part of the
 7. The seventh part of the
 8. The eighth part of the
 9. The ninth part of the
 10. The tenth part of the
 11. The eleventh part of the
 12. The twelfth part of the
 13. The thirteenth part of the
 14. The fourteenth part of the
 15. The fifteenth part of the
 16. The sixteenth part of the
 17. The seventeenth part of the
 18. The eighteenth part of the
 19. The nineteenth part of the
 20. The twentieth part of the
 21. The twenty-first part of the
 22. The twenty-second part of the
 23. The twenty-third part of the
 24. The twenty-fourth part of the
 25. The twenty-fifth part of the
 26. The twenty-sixth part of the
 27. The twenty-seventh part of the
 28. The twenty-eighth part of the
 29. The twenty-ninth part of the
 30. The thirtieth part of the
 31. The thirty-first part of the
 32. The thirty-second part of the
 33. The thirty-third part of the
 34. The thirty-fourth part of the
 35. The thirty-fifth part of the
 36. The thirty-sixth part of the
 37. The thirty-seventh part of the
 38. The thirty-eighth part of the
 39. The thirty-ninth part of the
 40. The fortieth part of the
 41. The forty-first part of the
 42. The forty-second part of the
 43. The forty-third part of the
 44. The forty-fourth part of the
 45. The forty-fifth part of the
 46. The forty-sixth part of the
 47. The forty-seventh part of the
 48. The forty-eighth part of the
 49. The forty-ninth part of the
 50. The fiftieth part of the
 51. The fifty-first part of the
 52. The fifty-second part of the
 53. The fifty-third part of the
 54. The fifty-fourth part of the
 55. The fifty-fifth part of the
 56. The fifty-sixth part of the
 57. The fifty-seventh part of the
 58. The fifty-eighth part of the
 59. The fifty-ninth part of the
 60. The sixtieth part of the
 61. The sixty-first part of the
 62. The sixty-second part of the
 63. The sixty-third part of the
 64. The sixty-fourth part of the
 65. The sixty-fifth part of the
 66. The sixty-sixth part of the
 67. The sixty-seventh part of the
 68. The sixty-eighth part of the
 69. The sixty-ninth part of the
 70. The seventieth part of the
 71. The seventy-first part of the
 72. The seventy-second part of the
 73. The seventy-third part of the
 74. The seventy-fourth part of the
 75. The seventy-fifth part of the
 76. The seventy-sixth part of the
 77. The seventy-seventh part of the
 78. The seventy-eighth part of the
 79. The seventy-ninth part of the
 80. The eightieth part of the
 81. The eighty-first part of the
 82. The eighty-second part of the
 83. The eighty-third part of the
 84. The eighty-fourth part of the
 85. The eighty-fifth part of the
 86. The eighty-sixth part of the
 87. The eighty-seventh part of the
 88. The eighty-eighth part of the
 89. The eighty-ninth part of the
 90. The ninetieth part of the
 91. The ninety-first part of the
 92. The ninety-second part of the
 93. The ninety-third part of the
 94. The ninety-fourth part of the
 95. The ninety-fifth part of the
 96. The ninety-sixth part of the
 97. The ninety-seventh part of the
 98. The ninety-eighth part of the
 99. The ninety-ninth part of the
 100. The hundredth part of the

SEC 1139.6 June 4 1921

Surveyed a piece of land in Tatt
 as follows, commencing at a
 cedar Post which stands N. 47° W. and
 1300 feet from the South 1/8 Part
 between sections 10 + 11 - 39 - 6 E

Thence N 43° West 60 feet. Thence N 47° E
 75 ft " S 43° West 60^{ft} + 187 feet to

a stake which stands on shore of lake
 thence Southwesterly along shore of
 lake to a stake which is 75 feet distant
 measured at right angles.

Thence S 43° E 198 feet to the cedar Post
 and place of beginning

PAGES 46-55
BLANK

Sec. 14-39-6

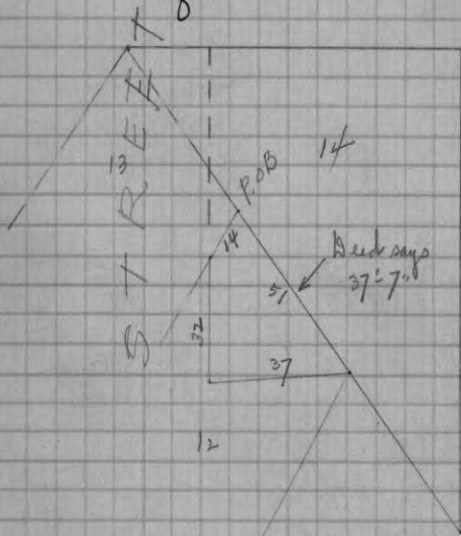
Rough check on a Metes + Bounds desc. in
Block 12 - Orig. Plat Minocqua
See Deeds Vol 102 Page 490 May 1928

November 4th 1929 32" 2" snow

H.C. Hall with Ray + Keith
Dig at NE cor. Blk. 12 - Iron bolt gone.

Since the orig. NW cor. Blk. 12 is in the street as
now widened we produce approx. N. line of
Blk. Westerly to rec. dist and continue along
SW line lot 14 by rec. angle + dist.

We find no monuments but the deed as written
is erroneous in that the closing course calls for
37'-7", whereas it would be about 51' -
an error of 13.4' ±.



SEC 14-39-6 sept 14 1922

Began at E 1/8 Post on S. Lm
Which sec I set year ago, Run E U as 3 1/2 E
Began again at same 1/8 Post and
Prolonged corrected Lm west and
set 1/4 Post { oak 9 N 8 E 45 1/2

{ " 8 N 35 E 38
Prolonged Lm STILL W and at
839 gater set state highway
2254 gater set LAKE and set M.C.

{ Pine 16 North 4 Links
W. " 24 S 85 E 16

R 30588

Village of Minocqua

Survey of lots 7 + 8 in Block 6 of
Original Plat of Minocqua.
for Neville + Holzward.

May 28th 1930 50°

H.C. Hall with Ray, Marshall + Keith (Hall).
Run \oplus Chicago St. orig. iron monument at W. line
Flambeau St. and by " " " at \oplus Menominee St.
These irons extend about 6" above ground.

Run on 3' offset N.

This line falls.

0.16' S. of ~~south~~ ^{north} edge Cement walk at NE x Blk 10
O.K. with Iron bolt in C.W. at NW x " 10
O.K. " Iron Pin found at NW x lot 3 " 10

Run N Block 6 (\oplus Milwaukee St.) by main face of
new Brick Community Bldg. on NE cor. Block 6
(4" Brick columns extend out from main face) we run by
main face of bldg. at NE x do
And by NW x 1 story Brick Telephone exchange on Lot 19?
Blk. 7 - 3' offset N. - Line falls.

0.86 feet S. ^{2.14} of C.W. at NE x Blk 5.01 S. of ^{2.91} main face Community Bldg. at W. end do58.5 S of ^{55.52} new iron fence post at SW x Blk 459.00 S. of ^{56.00} 2 x new concrete garage just E. of
alley in Blk ~~2~~ 359.04 S. of ^{56.04} SW x do. " 3100.12 N. of ^{103.12} N Face of 1 story Bk. on Lot 5. Blk 7
100.07 " " " " " " " "

109.92 S. of S. face recent Bricks (A.P. store) L. 8 Blk 2.
59.16 S. of SE x new 1 story Bk. garage E. of alley Blk 2
59.17 " SW x do

Measure S. on W Blk. 6.

0.0 our N " " as run
.03 joint in walk
25.00 record
25.10 joint in C.W.
50.00 notch " " found 189 m. of joint
112.35 N. face Bk. front Cement Block P.O. Bldg.
130.87 joint in Bricks
148.88 S. face of Brick
178. N " frame bldg with 6' eaves
200. line of old fence
251.02 N. edge C.W.
309.97 Iron bolt at NW x Blk. 10

190.87
172.35
18.52
18.32
18.32

Meas. S. on \oplus Blk 6.

- .32 N face Bk. cor. on Community Bldg.
0.0 our \oplus Milwaukee st as run
100.02 joint in C.W. + line of S. face Com. "
125. line of old fence in Blk 5
250.42 C.W. at SE x Blk. 6
310.00 Our \oplus Chicago St as run

Run \oplus Blk. 6 (W. line of Chippewa St.) by main
face Community Bldg. at NE x do + by Vaughans stake
at NE x lot 16 Blk 10. - 3' offset

Line falls

.05 W. of main face Com. Bldg. (at SE x Bldg.)

.30 W. of a stake found at SE x Blk 3.

.5 W of ^{2.70} NE x old frame bldg. at NE x Blk. 3.

Check distance across N Blk 3. from E. face old
2 sty. frame at NE x " " + get practically
record dist to a point 70' E. of Brick columns on
Brick bldg on lot 1 Blk. 3

Run & Onida St. by 70' E. of E face Bk columns on Birtsholz Bldg. (lot 1 Blk 2) which line up OK with other Bricks on E side Blk 2.
 And by iron bolt at NW x Block 10 - 3' offset - line falls.

3.38
 .38 W. of both corners 1st Blk. lot 9 Blk 3

3.61
 .61 W of NW x " " " 10 "

3.57
 .57 W of SW x " " " 10

10.35
 7.35 W of NW x O'heary Hdw.

7.1 " of SW x " "

2.93
 .07 E. of NW x 1st Blk. front Post Office } adjoining
 3.09
 .09 W of SW x " " Bank

Meas. E. on & Blk. 6

0.0 on & Onida St. as run

.17 joint in C.W.

1.35
 135.00 Record

200.57 joint in C.W. & line of fence.

252.

299.87 our W. line of Chippewa as first run

299.99 " " " " re-run

301.07 joint in C.W.

Meas. E. on & Blk. 3 (Blk. 6 obstructed)

- .41 joint in C.W.

0.0 on & Onida as run

135.00 Record

149.55 ± line of W. face Cement Garage & Western Union Bldg.

300. opposite stake found at SE x Blk 3.

300.07 our W Chippewa as re-run.

Re-run W. line Chippewa St. by Vaughans stake at NE x lot 16 Blk. 10 + by NE cor. old 2 story frame at NE x " 3.
 line falls.

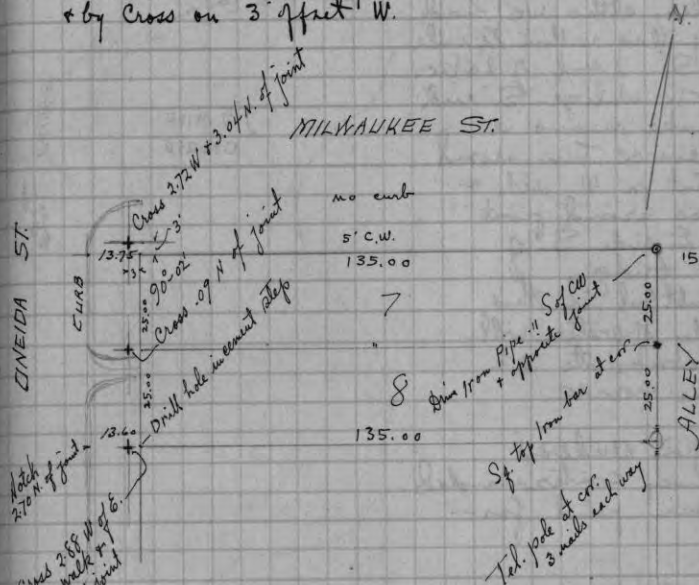
.12 E. of our first line at SE x Blk. 6

.33 E " " " " Milwaukee

.05 W. of Brick Col. on Community Bldg NE x

.13 W " " " " SE x

Take this line & give record meas. both ways on lots 7 & 8. 50' S on W alley comes in tel. or electric? pole & mark line both ways by 3 nails. Run & property on 1' offset S. + mark SW x lot 8 by hole drilled in Cement step. + by Cross on 3' offset W.



Note - Run W line Alley as shown.

fall .56 E of Burnetts iron which is 61.93 S. of & 8
 14.96 W of the iron rod found for NW x lot 3 Blk 10

- Posted in County Records

14-39-6 Minocqua

Survey of 2½ mile speed boat course (triangular if possible) in that part of Minocqua lake lying in Secs. 14-15 22-23 or at S. end Oneida St. with monuments plat etc. for locating buoys after ice melts.

January 29th 1930

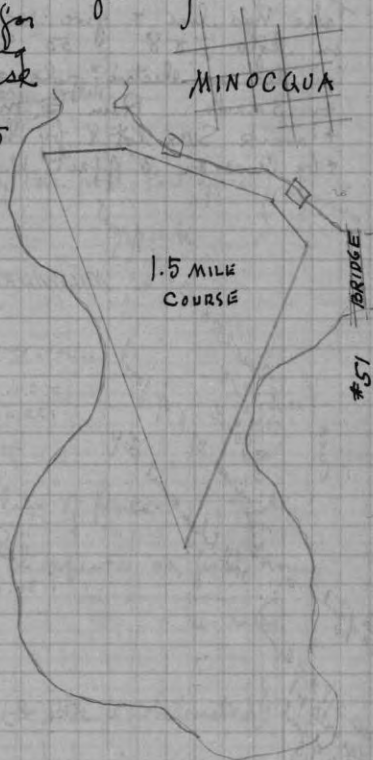
Ray + Keith 3 hrs. triangulating.

Set a number of flags for trial course necessitating 5 buoys with no reverse turns. Perimeter of this course calc. only 1.5 miles, altho we had S. flag within ¼ mile of S. end of lake. To utilize S. end of lake means a reverse turn around point on W. side & also around point on E. side S. of #51 bridge.

Doubtful if this body of water will accommodate 2½ mile course.

Report rendered
Survey countersmanded
-never paid for-

Posted



SEC 16-39-6 Sep 1920

N $\frac{1}{4}$ P set by Dorr also found mc.E
 of N $\frac{1}{4}$ P OK
 WEST from N $\frac{1}{4}$ P Vaughan var 4 $\frac{1}{2}$ °
 2061 fell 16. South of Dorr 1 $\frac{1}{8}$ Post
 W $\frac{1}{8}$ on N. line NEW 1 $\frac{1}{2}$ Pine 8 S-E 31
 NWC or: found the NE org: tree also Dorr
 BTs: N Pine 10 N 63 $\frac{1}{2}$ W 17
 NEW 10 OK 10 S 86 $\frac{3}{4}$ E 48 $\frac{1}{4}$
 NW cor South. var 245 E

2500 Pond

3500 over Pond

3812 Fell 34 $\frac{1}{2}$ E of 1 $\frac{1}{4}$ Post found SEP
 OF org tree. OK

W $\frac{1}{4}$ P NEW 1 $\frac{1}{2}$ Pine 14 N 25 E 77
 South from W $\frac{1}{8}$ Post N line var 215 E
 at 3812, and E from W $\frac{1}{4}$ P var 4° E
 2061 drew lines together and set
 118 P west of center 1 $\frac{1}{2}$ Pine 6 S 36 W 8
 Then prolonged line E to Lak 1920
 chains and set one } W Birch 5 S 31 W 8
 } Ashen 8 N 8 W 7 $\frac{1}{2}$

Set 1 $\frac{1}{16}$ Pin NW $\frac{1}{4}$ 1 $\frac{1}{2}$ Pine 10 S 11 E 28

March 27-1924.

W $\frac{1}{4}$ P OK RUN South var 1 $\frac{1}{2}$ ° E

40.06 Fell 67 W of CORN. which I set
 about 204 E ars ago from org BT's
 set S 18 Post on W line at 9003
 and 33 $\frac{1}{2}$ East OK Random

1 $\frac{1}{2}$ Pine 8 S E 9 $\frac{1}{2}$ 1 $\frac{1}{2}$ Pine 7 N 36 W 10 $\frac{1}{4}$

see B OK 9 Pond 169

1900 K 9
 E 9 Pond 10
 1900 K 9
 1900 K 9

in Village of Minocqua
 Survey of lot 15 in Block 9 of Orig. Plat.
 (laid out by C.D. Hill Feb. 1888 Vol. 1 P. 17)

October 9th 1930 Foggy 55°
 H.C. Hall with Ray + Marshall
 find an iron pin in inside cor. of CW for S. cor. Blk. 9
 Meas. N Ely from " along edge of "
 124.6 joint and angle in CW. (Rec. = 125)

Measure Sly toward " " " from NE x of
 water table on Bassett Auto Sales Bldg.
 50.02 SE x " (Water table)
 250.59 joint + angle in CW. (Rec. = 250)

Intersect the two record measurements, which point falls
 .15 W. of CW.
 .46 NW " " along lot 10 (produced)

Try 90° (Rec.) at said iron pin, sighting on intersect
 This throws us out on \pm of CW near W x Blk 9 N.G.

The distance along \pm Chicago St (produced) from NW x
 Blk 9 to the Orig iron Mark is not given on the
 plat. Calculated by 60' street width and record angle
 at NW x Blk 9 we have 85.6

Run N. line Blk. 9 on 1' offset N. (by Iron Now + by
 iron bolt in CW across Oueda from Bassett's, found
 OK in Neville Holzman survey)
 fall $.72 - 1 = .28$ S. of NE cor. Bassett Bldg on NE x Blk 9

Measure W. along \pm Chicago St from said iron bolt in CW
 at NW x Blk 10

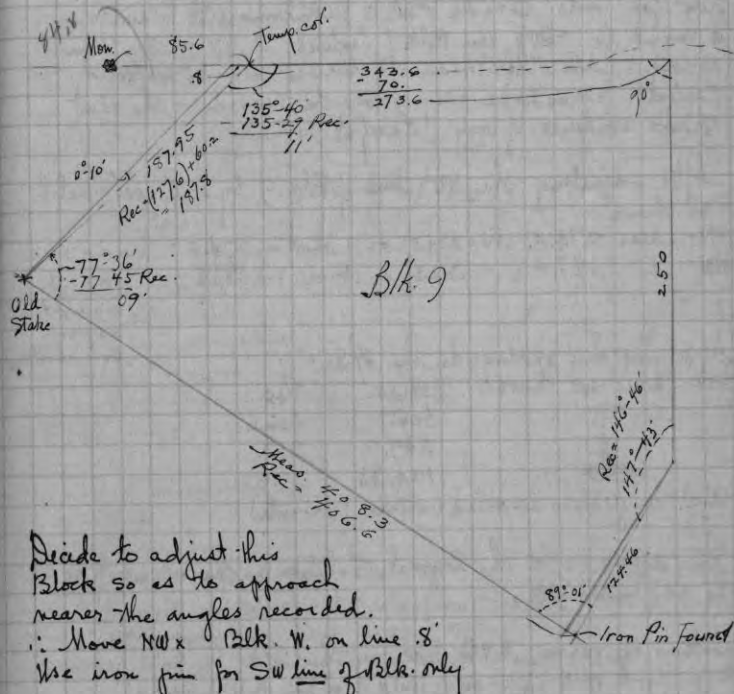
69.15 E. face Bassett Bldg.
 312.4 Iron Pipe found (new) (.1 N. of line)
 427.2 Orig Iron Now. shown on plat.

$$\begin{array}{r} 429.2 \\ - 85.6 \\ \hline 343.6 \end{array}$$

Dig at 343.6 + thereabout for evidence of NW x Blk. 9
 find nothing. Set temp NW x on line at 343.6

Village of Minocqua - continued.

H.C.H. finds old stake under sod at W x Blk. 9
 1.62 S Ely from CW
 1.96 N Ely " CW
 which measures 187.95 from our temp NW x Blk 9



Decide to adjust this
 Block so as to approach
 nearer the angles recorded.

∴ Move NW x Blk. W. on line .8'
 Use iron pin for SW line of Blk. only

Note - The plat on record in Reg. Deeds office, Rhinelanders
 does not show any record dist for lot 17 but gives
 the right angle depth as 125 and \angle at W x as 77-45

∴ W calc. 127.6 127.91

Overall rec. = 187.8 - 60.2 = 127.6

The record plat does not show any numbers for
 the lots commonly known as 18 + 19

The obvious intent was to have front + rear lines of lots 10 to 17
 parallel and at right angles to lines dividing " " "

Minocqua - continued

Since we found, in Surveying Blk. 6, that the most apparent line of Oneida St formed practically a right angle with the line of Chicago St as defined by 2 of the orig. iron monuments, we cannot reconcile the location of the iron pin found for Sx Blk. 9 anything approaching 90° N Ely from " " throws us too far into Oneida St. Furthermore it results in a meas. for SWly line Blk. 9 which is 1.7' greater than record. All other meas. we have made in this Subd. have come very close to record & the plat shows evidence of very careful work.

After adjusting the NWly line of Blk. 9 by 0'-10" (see sketch) we have:

N	Meas. 274.4 (Rec 274.5) or .1 short in 274.5 = .00036
W	" 187.4 (" 187.8) or .4 " = 187.8 = .00213
	<u>21.00249</u>
	.00124
	Av. shortage

Applying this shortage to the other boundaries we have:

	Meas.	Rec.
⊕	406.1	406.6
⊖	249.7	250.
⊕	124.85	125.

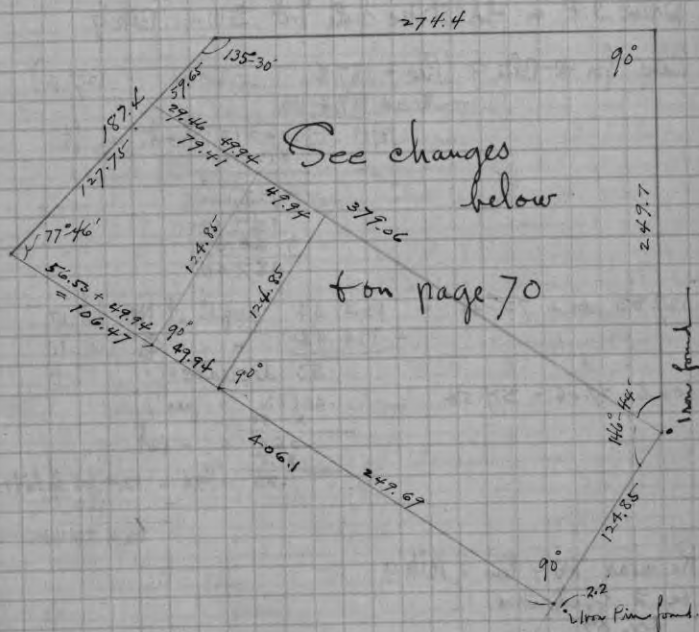
And angles as recorded (within 1 minute)

This seems to be the logical solution as the occupation is so indefinite.

Looking up various M & B desc. in this Blk. we find reference to a point on 4 35' E. of NW cor. (Vol 92 P. 112 deeds). Whenever drove pipe we found at sta. 312.4 on 4 must have had NW cor. Blk. 9 3' W. of our corner!

Another deed describing lots 18 + 19 says "SE along NE line of lots 17-16-15-14 + 13 to the SW cor. of lot 6." Record plat indicates SW cor. lot 6 to be 1.8' Nly from 4 lots 10 to 17.

Plan for Blk. 9 (October 10th)



October 11th 1930 Fair 75° 80° HC. Ray & Keith 5 1/2 hr.
 Set transit on 2' offset SWly from SW line Blk. 9 &
 2.2' NWly from iron pin + turn 90°
 thence meas N Ely 124.85 + set temp spike.
 .48' W of CW
 2.4' Nly from joint
 1.4' Sly

Dig & find round iron bolt against CW. & 49' from our spk.
 in Ely direction and 124.94' from our adjusted Sx Blk. 9.
 250.13 S N Ely Bassett Bldg.
 249.84 S Ely line of Monuments Chicago St

This bolt gives us Record (406.1 + .5 = 406.6) on SW line
 & still have 90° at Sx by moving SE .5 (= 1.7' from pin)
 Mark cross on CW on 2' offset & for SE line lot 10
 — 2.00 SW of edge of CW or 1.72 NW of joint —

PAGES 74-92

BLANK

Sec 23-39-6 May 24-1920

N¹/₄P. iron pipe is gone found N St pot on's
tree. set a small Post as Darwin has said
he would have an iron monument placed
the right away and I had not time to do so
Run south 11 or 3¹/₂° E

8:30 to lake

16.17 over lake

8:170 fell 332 E of S¹/₄P found the state
had constructed a road where this
Post stood and destroyed both of the
original trees
and set the Post some distance
from where it stood the Post and
bearings were OK in May 1914

Did the best I could to re-set the Post
in its original position. connected line
North from Talley 20.00 chains South to
Talley 40.00 chains

PAGES 94-100
BLANK

W. 1/4 Set by Darr from marion: B.T's
Run north var 8° E on a line said
to be correct.

1939 fell 1.16 W of 1/8 Post set by Darr
Set new Post and run East var 7° E
1600 fell 8.1 Ks of M.C. set by Darr
Found his stump of J. Pin marked by him
Run South var 4° E

500. it is 77 West to shore of lake

1000 " " 61 " " " " " "

1300 To a point of land 100 wide extending
SE from main land and extends
southeasterly about 400.

After crossing the Point it is
not possible to tell if dam on the
floodage, or the original lake.

1939 it is 500 ~~to~~ West to last timber part
of this distance ~~to~~ or also of it many
to flowage

Run West from 1939 var 7° E

1545 to fell 2 1/2 links N of W 1/4 P.

West from a stake which stands
one mile and 800 N of 1939. var 7° E
50 to shore of lake

129" a stake on Woodards West
which runs South 15° E

1564 fell 33 N of a stake on West
line which I set on corrected line
800 N. of West 1/4 Post

also Run West from a stake on
Woodards W. line which is 400 N.

The South line of lot 5, and parallel
with South line; To a stake on the
West line which stands 200 N of 1/4 P
commencing at a stake which stands
on shore of lake 565 South of one ~~to~~
measured along shore of lake. Then
 $N 65^{\circ} W$. 75 feet to a stake Then $S 23 1/2^{\circ}$
 W . 125 feet Then $S. 69^{\circ} E$ to shore of
lake

lake

This is known as the Wolf land
The rest is known as The
Woodard land.

commencing at SW corner
of the ~~two~~ Wolf land
There S 15° E 3.22 chains
" S 12° E 707 To shore of
Lake. This line crosses the lines
of the first two descriptions given
The south description was decided
to Mr Shape. The 2nd description
is decided to Walter Groby.

If The ~~woodard~~ woodard land
stands up in court he shuts both
The others of from Lake frontage
the first deed gives will hold

Survey or investigation to clarify metes
& bounds description of a tract of land
in Govt. Lot 5. The only available
description being very confusing & indefinite
for Farm Mortgage Co. Md. by A. J. Lytle

H. Leary of Mountain View Resort originally owned
all this land and has sold most of it in
metes & bounds parcels. His resort is located in
the NE cor. lot 5 adjacent to the MC.

January 26th 1931 25° 40°
H.C. Hall, A. J. Lytle, H. Leary with Marshall & Ray Hall

Identify Davis MC at NE cor. Govt. Lot 5 after
H. Leary shows us the remains of Davis Y. Pine
stump. It is on low, open ground.

Found Round iron bolt, level with natural surface
of ground from which

	V 4° 30' E (Dov)	Davis stp to hrs	N 84° W	.28 $\frac{3}{4}$
New Bearings	low Y. Pine stump	25"	N 75 $\frac{3}{4}$ ° W	.60 = 39.6
Y. 3° E	" " "	17"	S 29 $\frac{1}{2}$ ° W	.94 $\frac{5}{8}$ = 62.4
	North cor. resort bldg hrs.		S 82° W	

DH Vaughan did some work here in 1922 but his notes
are not altogether plain. He apparently used a
var. of 7 $\frac{1}{2}$ ° E which would be 6 $\frac{3}{4}$ ° E now \pm .

I decide to use var. 3° E as being nearer true North

From said Davis MC.

Measure SWly along shore (which is practically straight
here). 5.68 ch (374.9') (DHV says 5.65)

Course reads S 22° W \pm Ties at street view
to an iron pipe found in fence line & possibly
6' from water line. This point represents the
NE corner of the sig. A. A. Wolf tract. Fence
hrs. thence N 64 $\frac{1}{2}$ ° W 75' to NW cor. " (no monument)

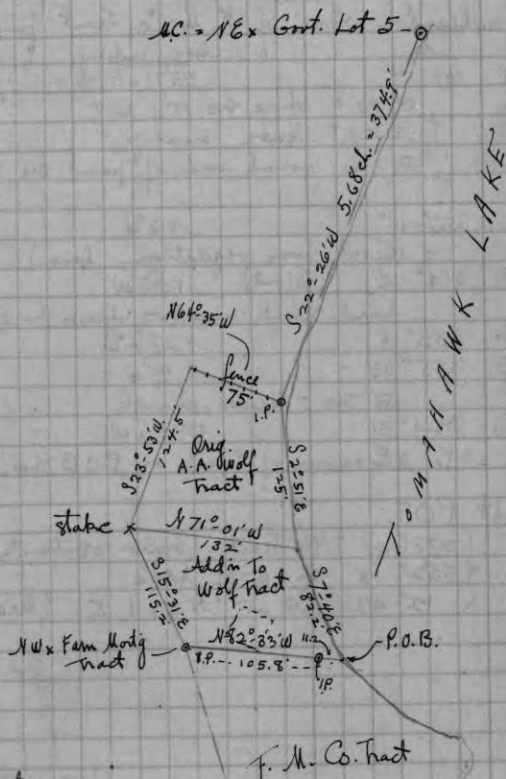
H. Leary identifies a stake in Swamp (124.5' S 24° ± W from NW end of fence) as orig. SW cor. A. A. Wolf tract. This is 8 rods from shore measuring S 71° E.

Mr. Leary was of the opinion that the Nly and Sly boundaries of Wolf's were parallel but was positive that the intention was to give 125' on the shore. Parallel lines would result in a lake frontage of about 140'. Therefore we intersect a meas. of 125' on the shore with a meas. of 132' from SWx orig. Wolf tract and get a point about at water's edge. Drive iron rod on reef 8' or 10' from sd. SEx Wolf's. Interior angle at NW cor Wolf's 88°-26'
 " " " " " " 85°-06'

At SE corner Wolf's orig. tract set mag. rerives on 3° E var. and find MC at NE cor Gov. L. 5 hrs N 16°-10' E. Set a rerive on Azimuth of 16°-10' and read:
 357°-09' = 12°-51' W Iron Pipe at 5.68 (Wolf's NEx)
 288°-57' = 171°-01' W " " " " 132' (" SWx)
 172°-20' = 57°-40' E along shore 82.2' to point on boundary line identified by Leary as the E of the "North half" of a tract of land divided between Wolf + Woodard. (The description of said tract or parcel divided described the shore line as 200' more or less.)

Leary identifies stake in Swamp as Wly end of said dividing line in said parcel + we drive Iron Pipe alongside. This (stake) bears S 15°-31' E 115.2' from SWx Orig. Wolf tract + N. 82°-33' W. ± 105.8' from our point on shore, said point on shore (82.2' from SEx orig. Wolf tract) being hereby designated as Point of Beginning for the Farm Mortgage tract. Bearings for:
 being { W. Pine 11" N 57°-10' W 102.3' "
 { Maple 5" S 32°-45' W 22.8' "

Since said P.O.B. falls about at water's edge we drive our iron Pipe on reef N 82°-33' W 11.2' from P.O.B. to mark the Nly line of said Farm Mortgage Co. tract.



From NW x F.M. Co. Tract run
 S 12°-03' E (by def. ± off H. Wolf Addn) along a line of old stakes and thru a square post found on reef. at shore & measure Sly along this line.

0.0 SW cor. Wolf composite tract
 149.0 ♂ on knoll from which NW x of 24' x 32' 2 stg frame lodge hrs N 82° E 64' } Mag. course only
 SW x " " S 70° E 69' }

230. ± Enter Swamp

489.5 Drive Iron Bolt with eye top alongside square post
 525' ± Intersect Tomahawk L. forming SW x tract.
 546' ♂ in cat-tail bay + in line of shore Sly.

- Meander shore ^{on ice} of F. M. Co. tract from Sta. 546
- | St. | Mag. reading | feet. |
|-----|---|-------|
| ① | 107° 54' | 260. |
| | 57 1/2 E | |
| | @ 30' ± shore line Nly 30' ± | |
| | @ 125' ± leave swamp. | |
| | @ 260 round end of point line 30' ± NWly. | |
| ② | 356° - 16' | 135. |
| | N 3° W | |
| | (6' out from vegetation line.) | |
| ③ | 314° - 28' | 200. |
| | (6' out) N 45° W | |
| | hard land narrows down here | |
| ④ | 332° - 18' | 75. |
| | N 27 1/2° W | |
| ⑤ | 355° - 33' | 180. |
| | N 4° W | |
| | @ 30' ± leave marsh | |
| ⑥ | 324° 31' | 97.3 |
| | N 35 1/2° W | |
- To NE corner of tract on P.O.B. for desc.

At P.O.B.

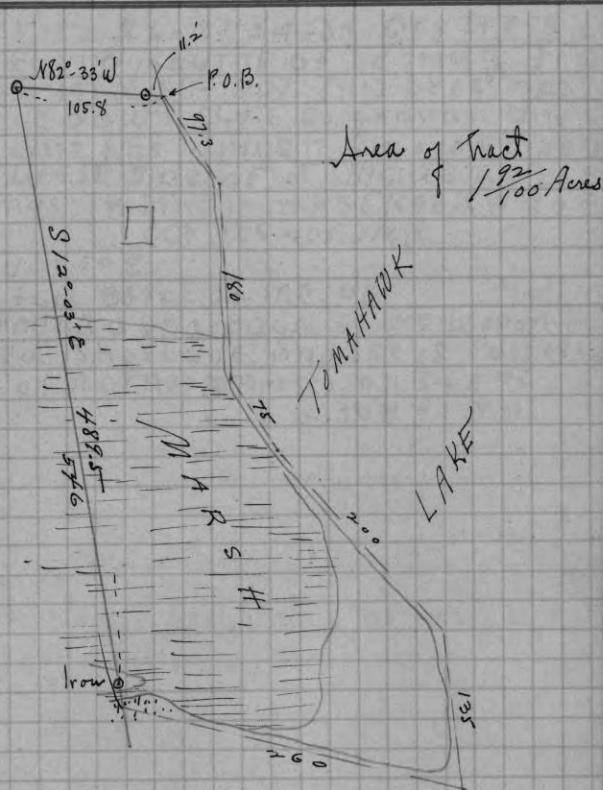
- { 277° - 07' ± H Tract (view obstructed)
 { 352° - 13' E Wolf Add'n
 { 12° - 43' NE at NE x L. 5 (Meas. 567')

$$\begin{array}{r}
 357^{\circ} 60' \\
 - 352^{\circ} 13' \\
 \hline
 7^{\circ} 47' \\
 12^{\circ} 43' \\
 \hline
 20^{\circ} 30' \\
 - 7^{\circ} 40' \\
 \hline
 12^{\circ} 50'
 \end{array}$$

∴ Use Az 12° 50' as

basis for calc.

This makes 16° - 12' from SE x Orig. wolf tract
 + 22° - 26' " NE x " " " 568 ✓



See 27-39-6-aug 22 1919¹⁰⁹

corner to 26-27 34-35. Org trees
gone. found stump of bearing $\frac{1}{2}$
made in NOU-1907. This tree has
been cut down close to ground. and
Some one has driven an iron pipe
on the west side of it. Made new
Bearings } W. Pine stump 36 N 46 $\frac{1}{2}$ W 120
 } Oak 12 S 40. E. 114 $\frac{1}{2}$

Run N. var 40° E

3388 fell 85 $\frac{1}{2}$ E of mc. ok

found a shortage .62 Lks. proportion-
-ed. Shortage and set $\frac{1}{8}$ Post 1964
N- of corner } W Pine st 30 N 34 E 36
 } " " 30 N 63 W 31

R308/08

Detail survey for plat of a Metes & Bounds description in the W. end of Govt. Lot 3, Showing location of bldgs. etc and stakes purported to be correct at time of purchase for Mercedes

See explanatory note on page 114 re our survey of Sec. 28 for Everhardt.

August 8th 1930 Observe Polaris near Mercedes' N.E. & find that the true Meridian is $0^{\circ}09'$ West of our Assumed Meridian (1928). This makes the course of the $\frac{1}{8}$ Sec. line (N. line of Lot 3) $N88^{\circ}07'W$. Mag. var. approx $3^{\circ}40'$ E.

August 15th + 16th 1930

H.C. Hall, Ray, Marshall part of 2 days.
(in connection with Pither work)

The stake represented as the NW \times Govt Lot 3 is 24.9' E and 13.8' S. of $\frac{1}{8}$ Sec. Cor. The stake represented as the NE cor. of property meas. 350' from stake for $\frac{1}{8}$ along N edge of road but is 48.3' S. of $\frac{1}{8}$ Sec. line and 38.6' S.E. at 90° from true Ely line of property.

Find hole where stake stood on shore for SE \times prop'ty & it is 9' NWly from true point (measured 200' along shore from point where $\frac{1}{8}$ line met intersects shore). Stake represented as " " " " " is 12' NWly from correct intersection of shore & $\frac{1}{8}$ line.

- For detail and references to corners see
Photostat print on file in County Surveyors office
R308108

Posted in Vol 1 Page 106

M.C. between Secs. 28 and 29 found one org. tree O.K. Set an iron for post. Post N. Var. $5\frac{1}{2}$ East. 10.00 fell 35 E. of cor. Sec. 20, 21, 28 and 29. Found the aspen O.K. Corrected S. to M.C. Work done for Miss Bock, Camp Agawak, Mindogua.

North line Sec. 29

Oct. 21st 1929
Ray, Keith & Marshall, Hall

Run "S 89° 19' 45" W" on a random course from (2) Orig. Cor. to Secs. 20-21-28-29 the bearings of which are

{ Orig. pine stump	NG 66° E	.16' =	11.0'
{ Y. Pine (new)	20" S 26° E	1.00' =	66.4'
{ W. " "	28" N 28 3/4° E	1.52' =	100.3'

- Corner marked by iron bar & Tamarac post.

by angle St. W. off W. line Cont. Lot 1 (Sec 28) 89° 29' 45"
def. SW " transverse line along N. " 4° 13' 30"

Chains

0.0 Orig. Sec. Corner
2.11³ hub on ridge - dense 2nd growth hardwood
3.47⁸ "
4.25 } N. end wet swamp SWly
4.80 }
6.13 road hrs. NE + SW
7.89⁵ hub (same road about 1 ch. S. here hrs. Wly)
15.19⁵ "
20.00 set Temp 1/8 stake on line

21.42 hub + offset S. 1.00 ft. to pass 12" B. oak

24.04 " (on " " " ")

25.54 " " " " "

28.68⁵ " " " " "

28.80 Enter small Tam. swamp hrs. NW + SE

33.57 hub (on same 1' offset S) to leave Swamp hrs. NW + SE

Move 1.00' N on to orig. random

36.28³ hub " " " "

39.00 Enter Swamp hrs. N + S (about)

39.43 1/2 turn angle W to S. to orig 1/4 S. bet. 20 + 29
87° 30' 1.31 3/4 ch.

∴ 39.49³ right angle S. to Orig 1/4 S (5) 1.317 ch.
39.443) 1.317 (.03336 = Tan 1° 54' 25"
- 59-17-45
∴ True course = S 87° 25 1/4' W.

(Oct 28th) Marshall finds this orig 1/4 to HCA chops in & discovers both orig. B.T.s both stumps grown short. They check fairly well. At the intersection of record dist. from B.T.s set corner. Drive 1" X 30" Iron Pipe

V. 6° 07' E	{ Orig. B.T.	N 29° E	.63
	{ " "	S 47° E	.25
V 2° 20' E	{ Notch in 5" W. Pine	N 59° W	.218
	{ " " 13" "	N 47° 20' E	.706

This is exactly at E. edge of swamp as per U.S. record

* 39.524

40.00 Temp stake on line - Make no search for 1/4 at this time - anxious for E & W 1/4 line -

43.60 leave Swamp NW + SW

43.75³ hub

45.00 opposite arm of swamp from NE

48.36⁹ hub

53.47⁵ hub to quit for night.

October 22nd 1929 overcast 40°

Ray & Marshall with S. B. McCoy - Same line

@ 53.47⁵ offset 0.65 ft. S to pass trees

56.21⁸ hub on " "

59.28⁸ right angle S 2.04⁸ (2.058-.01) for 1/8 S.

∴ Drive Iron Pipe from which
(9) { Nail + notch in 3" B. Oak hrs. N 84 1/2° W 6.5
" " " 5" " " S 35° W 18.0

60.01⁵ hub (on 0.65' offset = 1 ch.)

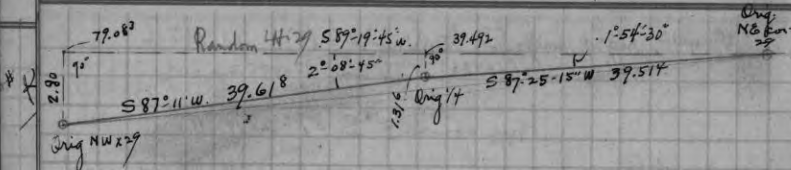
Move 0.65' N. + continue on orig. random

67.45⁸ hub

+ turn deflect in < (L) SW to orig. sec. Cor.

13° 32' 40" 11.95⁸ ch. " "

∴ 79.08⁰ int. < S. to sec. cor. 2.80 "



This post at Orig. NW cor. 29 ①, was set by H.C. Hall in 1928 from the stub of the orig. W. Pine & remains of orig. Tamarac.

We drive Iron Pipe alongside from which

V. 2° 20' E Nov. 1928	{ W. Pine 10" hrs.	N 40° W	.642	=	42.4'
	{ " " 8" "	S 41½° W	.269		17.8'
	{ Orig Pine B.T.	S 29° E	.11		7.3'

Set, 22nd 29 - continued

Run S. 0°-27½° E on random course from ① (NW x 29) by ← NE to S (turned from Sta. 67.458) 103°-45½° Short sight - unsatisfactory -

chains

0.0 Sec. Cor.

1.109 hub

6.69 "

13.69 " (channel [from large pond into small one NE] hrs N 80° E.)

N. extremity " " hrs N 44° E.

18.86' "

We are here 2 rods ± W. of possible line

19.617 right angle E. .565 for ⅛ S. Drive Iron Pipe (in gully bottom - N. edge) Marks

V. 2° 20' E Nov. 14 th	{ W. Pine 22"	S 31° 20' W	.872
	{ " " Stump 14"	N 24° W	.380

21.629 hub + offset 0.6 ft (.009 ch.) E. to pass birch

26.964 " on "

High wind - falling trees

Oct. 24th 1929 W. line Sec 29 fair 30° 45°

Ray + Marshall with M^c Coy

Continue same random line (on .6 offset E.)

30.197 hub

35.88 "

Offset transit & backsight .4' E = 1.00' E (= .015 ch.)

39.03 hub on offset of 1.00' E

Search for this ¼ corner. find nothing -

Stumps all badly burned -

39.234 right angle E. 1.111⁵ (1.129-.014) for ⅛ S.

Drive Iron bar for corner, & pine post

Marks

{ W. Pine 15" N 42°-40' E. .69 = 45.5'

{ W. " 18" N 35¼° W .71 = 46.9'

This corner comes at S. edge green timber & midway up NW slope of pot-hole.

M^c Coy's post stands on line of blazes 1.70 ± E. + .20 ± N.

45.209 hub (on 1.00' offset E.)

57.418 "

58.851 right angle E. 1.68 ch (1.693-.015) for ⅛ S.

Drive Iron Pipe & Mark

V. 2° 20' E Nov. 14 th	{ W. Pine stump 10"	N 41½° W	.25' = 16.6'
	{ " " 12"	S 12° W	.942 = 62.2'

68.171 hub (1.00' E of orig. random)

76.0 N. edge graded road W.

77.113 hub 1.00' E of " "

+ turn angle N to SE to orig Sec. Cor. 121°-08' 2.622 ch.

∴ 78.469 right ← E. to corner 2.244 + .015 = 2.259 from orig. random

2.259 ÷ 78.469 = .02879 = Tan 1°-39' to correct E.

Cor " = .99959

∴ True line = S 2°-06½' E (0-27½ + 1°-39') 78.501
39.25

Take SW cor. as found. Here is a pine stake dating back possibly 15 years or before a fire or two. It about fits the remains of two stumps. I haven't a doubt but the NE stump was plain a few years ago. Using $1^{\circ}05'$ E. Var on these stumps, the corner falls about 1 lb. W. of post found.

Drive Iron Pipe + pine hub at said point + mark

④	$\sqrt{2}^{20}$	E	W. Pine 15" N $22\frac{1}{2}^{\circ}$ E	2.098 =	138.5'
			Maple 11" N 40° W	2.028 =	133.8'
			Remains of orig. trich N 36° E	.14	9.2'
			" " " N $55\frac{1}{4}^{\circ}$ W	.27	17.8'

E+W 1/4 Sec. line

Oct. 25th 1929 Fair 60° 70°

Ray Marshall + Mc Coy

Set 1/4 S ⑧ as on page 119 + run "N $88^{\circ}45'E$ " on calculated 1/4 line by $\angle 89^{\circ}12\frac{1}{2}'$ N. to E off random 44' 0.0 1/4 S.

3.26' hub

5.75 "

8.50 } \pm Swamp N + S.

11.

16.22⁸ hub at W. edge road (S. of turnout)

Offset S. 20' = 2 1/2 lb. to pass large trees

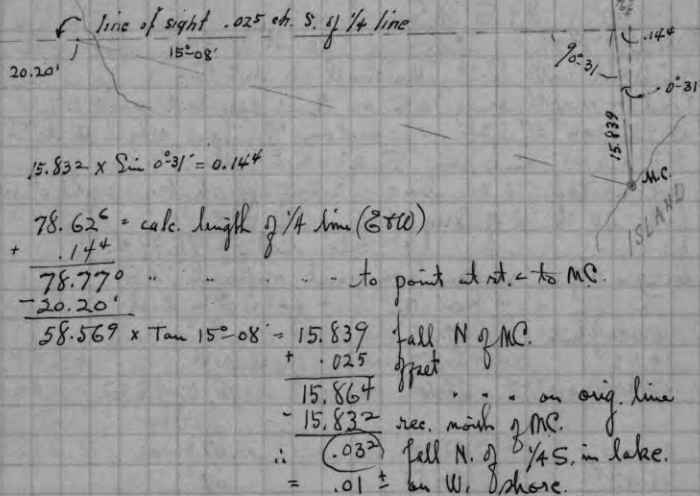
19.53 20" Black Oak on true line - blaze do

19.78² set 1/8 S. (at calc. dist.)

Drive flat iron rod + mark

①	$\sqrt{2}^{20}$	N	B. Oak 7" S 16° W	.055 =	3.6'
			W. Birch 11" N $81^{\circ}20'$ W	.159 =	10.5'

20.20' hub (on offset 2 1/2 lbs. S) + turn deflection angle (R) SE to Supplemental U.S. MC (1903) on N. shore island (on $\frac{1}{4}$ Sec. 29)
Repeat 3 times $15^{\circ}08'$



Could not expect to come closer (offsets + short sights etc.)
Take our 1/4 line as run OK + stake same
Change to 100' tape + continue on true line from 20.00' 1320'

1414.0' drive white stake at top of steep bank shore
Course N $88^{\circ}45'E$ var. here reads $2^{\circ}20'E$

1477.0' drive steel car axle with level gear top
for MC. on 1/4 line + 6' \pm from water.
Reference to following trees (horizontal meas.)

W. Pine 14" on bank	S 5° W.	54.4'
W. Birch 15" " "	N $80\frac{1}{2}^{\circ}$ W.	27.7'

① @ 1090.0 Stake + give Mc Coy line parallel with W. line sec.
(N $2^{\circ}06\frac{1}{2}'$ W.)

Oct. 28th 1929 N + S 1/4 Sec. line
 pair + 25' at 7 km
 H.C. Hall with Ray, Marshall & Mc Coy
 Find & mark orig. 1/4 S. on N as described page 117.
 at Station *39.524 on random N. Turn angle W to S
 91° 21' 45" and run "S 2° 02' E" thru 1/4 on
 calculated 1/4 sec. line - Swamp shaky - right short-
 fall .10 ch W of Orig. 1/4 S. on § 29
 calc. dist = 75.99 ch.

Measure N by on random from point opposite 1/4 S.
 Ch. = - from N. - correct in East-

6.22 hub =	69.77	.09 ²	
14.42 ⁵ "	61.57	.08	
17.84 ⁹	58.14	.07	1/8 S.

20.00 =	55.99	.07 ³	
21.43 ⁹	54.55	.07 ¹	
25.06	50.93	.06 ⁶	
27.84	48.15	.06 ³	

(27.84 = 1837.4' from S.)

© 1848.0 feet drive car axle at top of bank on true line
 (T) { Y. Pine 9" S 59 1/4° E .26° = 17.8'
 { Y "stump 15" S 88° E .015 = 1.0'

1870.0 feet drive stake on line at shore-bank steep.

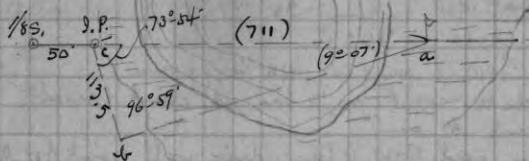
ETW 1/8 sec. line in NW 1/4

November 1st 1929 overcast 35° 40°
 Ray, Marshall, Mc Coy
 Reference NW x 29 (1) as on page 118
 At sta. 19.63³ on random W 29 turn N to E 88° 25 1/2'
 and run "N 87-58' E" on calc. course for 1/8 line
 thru 1/8 S (16) as set, page 118

Meas. in feet

0.0 1/8 S.

50.00 Drive Iron Pipe on line & enter
 marsh bordering small lake
 " lay off triangulation base SE



$$b = \frac{a \sin B}{\sin A} = \frac{113.5 \times \cos 6^{\circ} 59'}{\sin 9^{\circ} 07'} = \frac{112.66}{.15845} = \frac{711.0}{.15845} = 711.0$$

feet

761.	flag on E side top of lake, & about 100' from water
986.4	hub & leave swamp NE & SW.
1000.0	drive Iron Pipe on line for Mc Coy's convenience
1058.	hub
1306.5	drive Iron Pipe for 1/16 S (C)

1400. stake

* 1443.1 hub

Offset N .6' to pass B. Oak

1500.0 drive stake (on orig. line)

1634.2 hub (on offset .6')

1700.0 drive stake on orig. line

1900. "

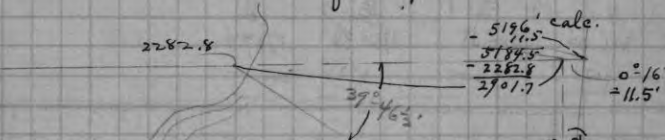
1934.4 hub on sd. .6' offset. Attempt to resume true line but forced to offset 2.8' S. of orig. line.

2282.8 hub

Turn ~ SE to W. to flag on N shore island (Mc)

Repeat 3 times = def. angle 39° 46 1/2'

2300. stake on line - quit for darkness



$$2701.7 \times 83243 = (7 \tan 39^{\circ} 46 \frac{1}{2}')$$

$$2415.5$$

$$+ 2412.2$$

$$= 2416.3$$

$$- 2412.2 = \text{calc. N. of Mc.}$$

$$\therefore \text{fall } \frac{1}{3} \text{ too far on N at } \text{§ 29}$$

$$\times .44 \text{ " " " " } \text{© } 2282.8 \checkmark$$

$$1.9 \text{ " " " "}$$

2416.3
(calc. = 2412)

ISLAND

November 2nd 1929 fair 35° 45°
 Ray, Marshall & M^c Coy
 Take this E-W 1/8 line in NW 1/4 as run
 (forego check meas. S. on 1/8 line as client does not
 want it run)

∴ at 2356' on said E-W 1/8 line drive well point for MC

also a white stake. Mark

(V) $\begin{matrix} \sqrt{2} 20^{\circ} E \\ \sqrt{Y} \end{matrix} \begin{cases} \text{Pine } 9'' & N 39^{\circ} E & 8.4' \\ \text{" } 10'' & S 57^{\circ} E & 3.8' \end{cases}$

This corner about 6' from water
 Shore on curve brs. N 30 E
 S 31 W

Run traverse along shore N $\frac{1}{4}$ from MC (V) on 1/4 line

① N 22° 40' W 200.0 feet
 ② N 17° 30' W 100.
 ③ N 7° 45' W 100.
 ④ N 4° 47' E 100. (at 86' outlet bed brs. NW by)
 ⑤ N 28° 39' E 475.

@ 325' drive Iron Pipe for S.
 corner tract with 150' footage

⑥ N 34° 48' W 335.4 to N. corner tract
 ⑦ N 2° 06' 1/2 W 143. (parallel with W. line Sec 29)
 To station 1443 on E-W 1/8 line

(S 87° 58' W 1443.
 S 2° 06' 1/2 E 1295.
 N 88° 45' E 1477. to P.O.B.) not re-run

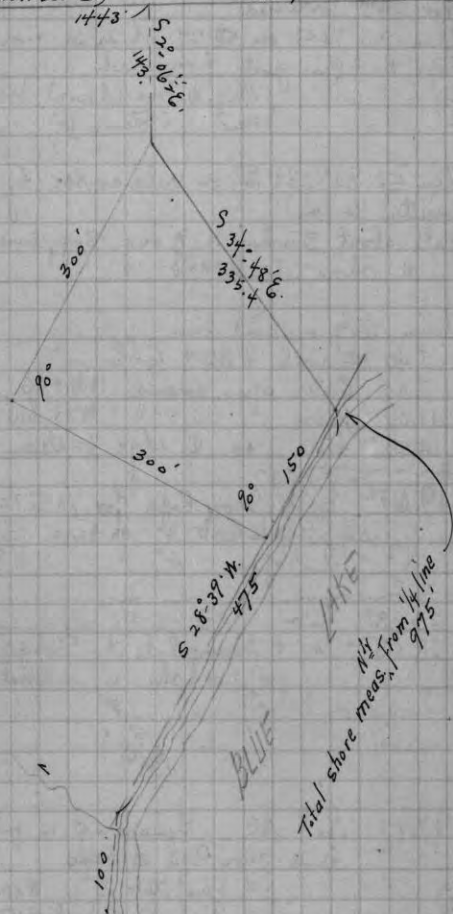
Latitude + Departure for this circuit

N	E	S	W
1346.04	1345.33	1760.38	1759.4
(.71)	error.	(.97)	

November 14th 1929 Overcast 30°
 H.C. Hall, Ray, Marshall & M^c Coy
 Search thoroly for orig. M^c on Φ Sec 29 on
 W. shore lake. Find nothing. The course purported
 to have been measured over ice in 1903 from the

1/8 Sec. line (N. line Cor. Lot 3)

N 87° 58' E



Supplemental MC. on W. shore island must be erroneous
 as it would be necessary to go much farther N. on W. bank
 in order to get record dist. over lake.

13.35 = Rec. dist. between Meander Corners. (1903)
 7.98 = our dist. - (on line to 1/4 S.)

Nov. 14th continued

From Orig $\frac{1}{4}$ S. on Φ 29 which is marked by an iron
Pipe + Pine post from which

- (7) $\left. \begin{array}{l} \text{Orig. W. Pine (down) brs. N47E } .18 = 11.9' \\ \text{New. " " stump 16" " N88E } .63 = 41.6' \end{array} \right\}$

Run "S 82° 28½'E" on calc. course (by turning off from
corrected $\frac{1}{4}$ line)

Fall about 5 inches N. of orig. Supplemental M.C. (1903) on
W. shore island

Chain Ely on said line

5.40 Φ road WNW + ESE

7.00 Enter open swamp NW + SE

11.00 Leave " " N + SW

14.05² hub on W. edge plateau

$\frac{14.05^2}{2} = 7.78.6$

19.67⁶ Drive Iron Pipe for $\frac{1}{8}$ S. (about 3" S. of random)

- (13) $\left. \begin{array}{l} \text{Black Oak 4" on bark S70½W } .24 = 16.1' \\ \text{Aspen 4" " " N32½E } .23 = 15.6' \end{array} \right\}$

23.08² hub

28.68² " + triangulate to Supplemental M.C. with base
of 1.00 ch. dist = 8.47 ch.

$\frac{28.68^2}{11.616} = 279.332 \text{ ac.}$

$\begin{array}{r} + 28.68^2 \\ 37.152 \\ 1.62 \\ \hline 39.362 \end{array} \div 2 = 19.681$

* 29.17 Set M.C. Square up a pine stub for cor. &
drive Iron Pipe at base. Mark

- (5) $\left. \begin{array}{l} \text{S.Y. Pine stub 15" N20½W } .29^5 = 19.5' \\ \text{W. Birch 3" on bark S57½W } .27 = 17.8' \end{array} \right\}$
base of hook point brs. N⁴y 17 paces

29.25 To Blue Lake

* This was noted as 28.17 in scratch book
See correction of 66' on plat filed
Error does not affect the location of any corners
Makes N. Cont. Lot 1 Sec. 32 (in land)
626.6 ft. instead of 560.6'

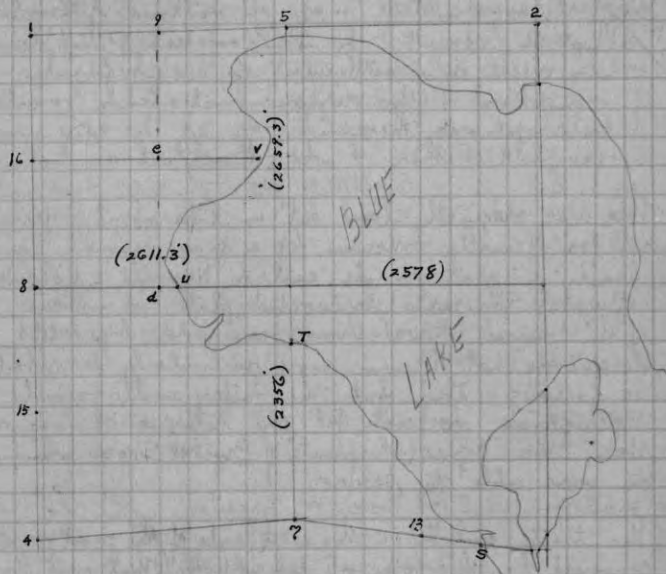


Diagram of Sec. 29-39-6

See plat on file

Posted in County
Records.

#R29720

Traverse and map of outline of Govt. Lot 2 (except L.R. Pinkowski's Point) in view of a settlement of the confused condition of the various metes and bounds descriptions therein, for C.H. Pither + L.J. Buchheit

This was originally laid out in lots about 9 years ago for Neville + Moraw by a man named Sanford and a plat made called Neville + Moraw's "Crystal Shores" (unrecorded plat). A number of the parcels have since been sold by deeds describing "Lot No. — more particularly described as follows: etc" but the metes and bounds descriptions do not fit the lots as shown on the two copies (blueprints) of Crystal Shores which we were able to secure.

The tracts (or lots) on the east side of the point were conveyed by this form of description: "That part of Lot 2 Sec. 28-39-6 E commonly known as lot — of Neville & Moraw's Crystal Shores, otherwise described & bounded as follow: Commencing at a point on the East shore of said Govt. lot — feet Northeastly from the easterly end of a line running 72 degrees north of east from a point on the west shore of said lot 1544 feet Southeastly from the north west corner thereof. Thence Northeastly along said shore — feet, Thence west — feet etc, etc.

Such a description is obviously erroneous since the north west corner of Govt Lot 2 has never been accurately located & marked and since a line running "72° N of E" from the point specified would pass out of the north line of Govt lot 2 without intersecting the East shore " " " "

→ See Deeds Vol. 96 Pages 571 + 580 Vol 100 Page 433 and others. (There are 36 conveyances) +

August 8th 1930 PM H.C.H. Ray, Marshall Clear out space for Polaris observation near NE corner Mercedes property. Check Ely on 1/8 line (H Govt lot 3 - run 1928) by producing line of own post at NW cor lot 3 and our corrected picked about 700' E of do. Fall 0.25' S. of true true sub 1030.75' Ely of NW x 3.

$$1030.75 / .25 = 4123 \text{ Tax} \\ 0^{\circ} - 0' - 50''$$

10:40 PM Observe Polaris at E. elong. on range of 335.25' (overhanging branches) Az. = 1° 32' 40" Tan .02697

x
9.04 correct W for true Meridian at 335.25
Mag. var. " " " = 3° 40' E.

Aug. 9th '30 Intersect H Govt lot 3 as sighted above at 371.4 Ely from NW x
and turn a W to N to True Meridian
① 88° 07' ② 176° 13' 30" ③ 264° 19' 30" (88° 06' 30" ✓
∴ this line of sight = N 88° 06' 30" W
+ 50" correct
∴ Corrected H 3 = N 88° 07' 20" W.

Our assumption of 1928 made at N 88° 16' 40" W
∴ 0° 09' 20" is the correct to apply to courses on Emmerich & L. Coy works (page 114)

Produce our 1/8 line (H lot 3) N 88° 07' 20" W from corner to lots 2 + 3 The bearings to which are:

{ Y. Pine 11" brs.	28 3/4° E	45.2'
{ Y " 10" "	S 80° 20' W	38.9'

- 24.9' fall about 14' north of Neville's 1/8 stake
0.0 1/8 corner
344.93 stake stake
647.0 " " (E road brs. S 16 1/2' here)

Note - In 1928 could not find N 7° S 0' H + N 1/8 line are straight.

- 995.8 hub + tack (☐ road 9' S. here)
 1100. Tangent to N. edge of road here
 1149.55 hub for traverse sta. ☐
 ☐ Crystal Shore Road has S 11° E.
- 1217½ fall 2½ or 3' S. of a poplar stake
 1355.8 " 0.5' N. of an iron rod found (strap iron)

1371.7 hub
 1587.4 "

1750. Drive 1" Iron bolt 2½ long 6" below surface for
 Witness Corner to Mc. + mark

Var. { Y. Pine 20° N 34° 25' E. 54.1'
 3:04 E { Y " 22° N 88° 30' E 64.25'
 here (Marked "MC MC BT")

- 1764.6 fall 6' North of a square stake found
 1769.35 hub at top of high bank
 + 53.75 (meas. 64.44 on slope of 33° 25')
 1823.1 hub on beach - Def. \angle (R) to Orig. MC (N. shore)
 between Secs. 28-29 @ 40° 36' @ 81° 12'

August 11th 1930 fair 60° Same party

- 1825.7 Drive square head bolt in log 1' from water for MC
 V 3:43 E { Y. Pine 8" N 3° 20' E 6.
 B. " 9" S 36° E 28.7'
 (Marked "MC BT")
 Turn \angle to MC from here 40° 42' 81° 24'

Begin meander of W. shore of Govt lot 2 on true
 courses from here (1825.7)

Set corner on Azimuth 271° 52' 40" (1/8 line)
 (SW tip of Pinkowsky's Point to 175½)

N ^o	Az.	Course	Mag. course	feet
1	157° 43'	= S 25° 17' E	S 25 E	144.
2	160° 55'	= S 19° 05' E		100.
3	163° 37½'	= S 16° 22½' E	S 16 E	144.
				388.

N ^o	Azimuth	Course	(Mag. course)	feet
			forward	388.
4-	163° 37'	= S 16° 23' E	S 16 E	82.
5-	" "	" "	" "	90.
6-	160° 07'	= S 19° 53' E	S 19½ E	110.
7-	155° 04'	= S 24° 56' E	S 25 E	110.
8-	163° 45'	= S 16° 15' E	S 15½ E	100.
	to clearing "Annie Laurie Lodge"			
	stake found by 45° 40' 24.4'			
9-	173° 06'	= S 6° 54' E	S 6 E	200.
10-	177° 48'	= S 2° 12' E	S 2 E	164.
11-	182° 20'	= S 2° 20' W.	S 2 W	150.
12-	182° 59'	= S 2° 59' W.	S 3¾ W	150.
			Deeds Record	1544.

Find no monument here to mark spot.

This traverse was made along water's edge (at foot of
 steep bank most of way.)

August 14th 1930 70° foggy to fair Same party
 At station ② 1544' Sly along shore from NW x lot ②
 Turn N 72° E which is obvious intent of deeds + true
 trial line.

0.0 Sta. 1544
 49. hub
 442.75 "
 453 ☐ Road N + WSW

From hub 442.75 above Run check traverse Nly
 along road to our station 1149.55 on NW lot 2.
 - repeat all angles 3 or more times

See next page for table -

No.	Reversing this traverse from sta. 1149.55		which is	37.66 N. to		1148.9 W. to		W of 1/2 cor.
	Arz.	Course		S	E	W	S. of 1/2 cor.	
1	170° 10' 40"	S 9° 49' 20" E	493.07	85.36		455.41	1063.54	
2	157° 26' 10"	S 22° 33' 50" E	134.82	56.02		590.23	1007.52	
3	184° 34' 40"	S 4° 34' 40" W	207.34		16.60	797.57	1024.12	
4	203° 41'	S 23° 41' W	250.01		107.64	1047.58	1133.76	
5	170° 27'	S 9° 33' E	245.55	41.26		1293.13	1092.50	
6	(to our hub 442.75)	S 72° W	136.82		421.08	1429.95	1513.58	
	(251° 58' 30")							
	(71° 58' 30")							
	(72° 00' -)							
	(0° 01' 30" out in 443' = .19')							
						1429.38	1513.24	.34

By shore traverse

∴ Correct S. 2' at hub 442.75 + B.S. on 1574.

Azimuth 72° 00'

old stake to 213 = 56'

48.2'

44 = 44'

51.1'

(" " are 99.2' apart.)

Resume this corrected line N. 72° E.
at 528.4 hub (1266.68 S. to 1011.10 W)

stake found to 355 = 10'

84.8'

" " in S.P. 113 = 34'

115.6'

L.R. Pinkowsky identifies this pipe as the Ely end of
the orig. line between his property & the plat.

at 572.7 fall 2' S. of S. cor. Ghislins porch

* 743.6 hub at top of low bank 12' from water

" " stake found marked "23-24" 4' from "

ears 207 = 57'

35.4'

From latter meas S.W. along shore to a stake

this is 19.5' from the S.P. identified by L.R.P.

99.7'

" " Stake found SW of Pithers boat house to.

49° 07'

80.4'

" " SE corner " cottage

9° 30'

88.8'

at 763.6 drive hub just E. of 14' W. Birch & 3' from water.



Traverse E. shore Lot 2 (from Ely end of line running
N 72° E from station 1544 on W. shore of lot)

We run from station 743.6 on said line as view from

763.6 is obstructed by boat house etc.

Magnetic Var. here reads 2° 34' E.

N ^o	Azimuth	True Course	Mag. course	feet
1	49° 56'	N 49° 56' E	N 51° E	265.0
	To hub 3' from water, N. of toothhouse @ 104' Φ of bathhouse annex to "			
	① Stake found marked "21-22" 229° 46' 98.3			
	" " 27' from water 280° 42' 31.0			
2	31° 41'	N 31° 41' E	(N 31° E)	70.0
	at 15' Φ dock + stairs from ② Buckheit cottage to 267° Rossell's 294° to 309°			
3	21° 49'	N 21° 49' E	(3' from water)	185.0
3½	8° 05'	N 8° 05' E		30.00
4		N 19° 46' W		82.6'
	(3 to 4 = 347° 33' 110.)			
5	329° 19'	= N 30° 41' W		90.0
6	326° 31'	= N 33° 29' W		100.0
7	358° 09'	= N 1° 51' W		75.0
8	343° 20'	N 16° 40' W		70.0
9	59° 10'	N 59° 10' E		106.0
10	81° 28'	N 81° 28' E		95.0
11	79° 48'	N 79° 48' E		75.0
12	87° 00'	N 87° 00' E		100.0
13	93° 37'	S 86° 23' E		160.0
14	100° 25'	S 79° 35' E		133.35

To ¼ line (1 ft. N of MC + .12 E of ¼ line)
359° 15' $\frac{1}{4}$ line (should read 359° 22')

(14 (corrected) S 79° 09' E To MC 133.4')
Our bearings for this MC (SE cor Lot 2) made 1928:
Black Oak 6" S 78° 20' E 79.6'
Y. Pine 6" N 78° ¾ W 75.7'
thence N 0° 38' W on ¼ line 336.2' to ¼ cor on P.O.B. ✓

Note - This traverse (as re-adjusted at sta. 442.75 on Φ)
brings us to a point of closure 0.3' S + 0.22' E of
NE cor Govt. Lot 2 on P.O.B. ✓

E. shore line of lot 2 from Ely end of our line (sta. 763.6)
measures 1618.6'

The plat indicates about 1130' to angle in shore
Our trav. to sta. ① is 967.6' - - -

The Wly end of the dividing line, called 1544' from NW cor 2
is identified by L.R. Pinkowsky by old metal hoop
he placed over a maple stub at shore and 15½' Sly
from our station 1544. There is no stake here.

It appears that the stakes marking the orig. meas.
(down W. side of lot and dividing lines between
W. shore parcels) ^{which} was made along top of high bank
at north end and tang. to shore where same is low
near Annie Lavin's lodge. Then along top of bank to
S. end. ~~was~~ This measurement evidently starts
from stake we found 6' S. of our ¼ line and 61'
from the shore!



August 26th 1930

With various large scale maps made up from the foregoing notes. Showing relation of deeds as described to such stakes as can be found. hold conference on the ground with Ch. Pither, A.J. Buchheit, L.R. Pinkowsky, Louis G. Neville, H.C. Hall, Ray & Marshall Hall present.

An agreement was reached as to following the apparent line of division between Pinkowsky's point and the Plat i.e. from a point 16' Sly from sta. 1544 on W. side to the Dow Pipe found 19.5' from shore stake on E.

(See page 133)

This line was described in deeds as 72° N of E, meaning $N72^\circ$ E but which in reality bears $N77^\circ 41'$ E.

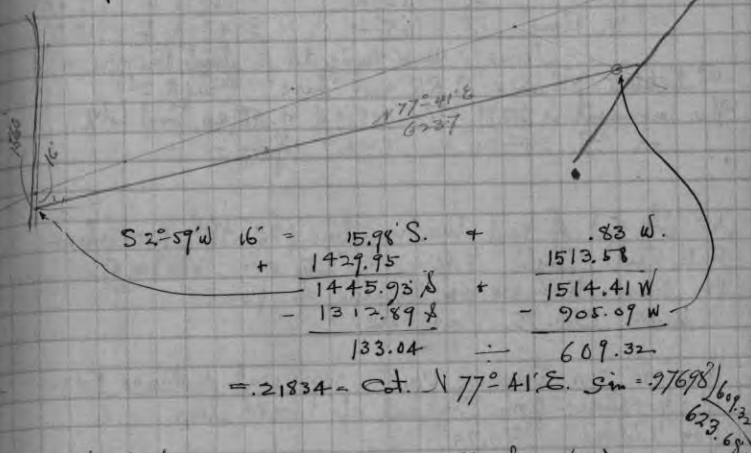
As to the location of the rear corners of the Ghieslin, Pither, Buchheit & Russellot properties, no definite agreement could be reached since no stake could be found which could be positively identified.

The length of the parcels from lake to rear, as stated in the deeds agrees with the plat figures in very few cases. The same may be said of the " " for the rear width of lots, where given at all.

In fact the deeds on record have departed from the blue print to such an extent that it is a very difficult matter to reconcile them, assuming that it was accurately surveyed originally.

There is a path running N&Sly across these lots some distance E. of where where record depth for lots takes us. From the stakes along this path & statements made it appears that much of the juggling took place here & is described as being measured at the rear or wly ends of the lots.

August 28th 1930 3:30 PM. H.C. Ray, Marshall.
Produce our last course on W. side (S. $2^\circ 59'$ W) 16' beyond 1544 = 1560 + drive stake & tack.



Correct Sly at 90° from our 442.75 + eight thru. (OK)
Meas. from E end.

20.00 Dow Pipe previously noted - on line

185. drive temp spike

270. " " "

394.2 fall 0.45' S of a stake found in hollow for SW x Ghieslin property (in road)

643.2 our sta 1560 on W. side point. With BS on sta @
 Φ reads $N 77^\circ 41'$ ✓

Select point on Φ 20.00 $N 77^\circ 41'$ E from 1560Set 47" piece of R.R. rail 6" exposed (Sept 3^d)

Cross on ball of rail marks the point. from which

W. Pine 10'	334' 10' =	N $25^\circ 50'$ W.	31.0'
W. " 9'	215' 15' =	S $35^\circ 15'$ W.	30.6'
W. " 10'	106' 25' =	S $73^\circ 35'$ E.	44.7'
SW x cottage	15' 30' =	N $15^\circ 30'$ E.	38.3'

Set 3" R.R. rail on Φ 249' from 1560 point to agree with stake found. (Deed says 248).
 This marks SE x Pinkowsky part of "the Plat"

To Locate a piece of Land in Lot 1 on which J. A. Olmsted, has built a boat House. The N. $\frac{1}{4}$ Post has been obliterated The me. on N Line is gone also. But I had Run the North Line W The N $\frac{1}{4}$ Post was OK and me also. I surveyed the Island lying East from the me. and set me. on NW Point and NE Point of Island at that time. May 25th 1905 See Page 74 Dorrs Book County record.

Found me. on NE Point of Island and run West var $345^{\circ}E$

153 me. gone. 2935 found I was 10 Lks South of original Line and set $\frac{1}{4}$ Post on true Line $\frac{3}{4}W$ Pins HN $89\frac{1}{2}W$ 122

Began at a point on N. Line 150 West of N $\frac{1}{4}$ Post and run South at right angles with N. Line 600 offset West 136

972 fell 68 East of an iron monument on shore of Lake and is the S.E. corner of a piece of Land described as follows Commencing at this iron monument.

Then N. $16^{\circ}E$ var $4^{\circ}E$ 65 feet

" W. at right angles 60 "

" S . " " 94 " to Lake shore

" northeasterly along shore of Lake to Place of beginning

PAGES 146-176
BLANK

INDEX

Section	TOWNSHIP		RANGE		CITY OR VILLAGE	ADDITION
	N.	S.	E.	W.		
36	39		6			
27	"		"			
23	"		"			
16	"					
1	"		6		Town of Woodguff	
11	"		6			
11	"		6			
25	"		6			
14	"		"			
33	"		7			
5	"		6			
<hr/>						
29	39		by 61		H. C. Hall	
14	"		"		in Blk. 6 Orig. Plat Minocqua	
14	"		"		" 12 " " "	
25	"		"		in Court. lot 5 (M+B)	
28	"		"		in " " 3 "	
14	"		"		on lake	
14	"		"		lot 15 Blk. 9 Orig. Plat Minocqua	
14	"		"		" 11-12-13 " 6 " " "	
28	"		"		In Court lot 2	

INDEX

FOR WHOM SURVEYED	WHEN			Page
	Day	Month	Year	
J. A. OLMsted	16	Oct	1918	145
MILWAUKEE man	22	Aug	1919	109
	24	May	1920	93
Wasserburger	4	June	1921	45
RS. See 5963			1921	45
A J BOLGER				
A J BOLGER	21	Sept	1921	45
O A Darum ET al	10	Jan	1922	101
MRS Eva clawson	30	Aug	" "	57
			1923	37
City of Rhineclander	15	Nov		
<hr/>				
Stuart B. McCoy, Hazelhurst + Sparte		Oct. + Nov.	1929	114-127
H. Newille + (C.) Holzman	28th	May	1930	58-61
A. O. Darwin	4th	Nov.	1929	56
Farm Mortgage Co. Milw. (A. J. Lytle)	26th	January	1931	103-107
Jos. Mercedes	8th-16th	August	1930	112
Minocqua Boat Club	29th	January	1930	62
Lee Jossart	11th	October	1930	66
Anna Wasserburger	29	April	1931	72
C. H. Pither + A. J. Buchheit			1930-31	128