

38-5

38  
5

59

1

Tewaship 38 N. Range 5 E.

---

Surveys executed under the  
Emergency Conservation Work

by  
Ray H. Hall

{ Deputy County Surveyor  
& Camp Engineer. CCC. 75-S.  
(Blue Lake Camp).

Labor - C.C.C. Selectees

Transit - Light Keuffel & Esser # 5129 A.

Azimuth - Determined by direct observation on  
the Sun when possible.

Polaris Meridian established at Camp 75-S.

in NE NE Sec. 1 - 38-5.

East Boundary

Random &amp; Sec. 1 - 38-5 E.

June 21<sup>st</sup> 1933 - Fair - +75°

Ray H. Hall with Duszynski - Touffler, Zello + Rosenack

Check post found at Orig. Cor. to Tps. 38+39 N

Ranges 5+6 E. Record Measurements from 4 orig bearings come together within 1 link. Move post found West 10".

Mark 1 new bearing. {  
 True Az. {  
 Mag. Var. 0°-52' E. {  
 N. Pine 10" N 40°-09' E .981 ch.

Run 5<sup>th</sup> (S 0°-52' E) on random range line

Mag. var. of random 2° E. (Pending calc. of Azimuth)

Chains. (Chicago Steel Chain Tape). See Page 12

6.0 Township cor.  
 7.97 E of old road - E+W winding  
 10.557 Hub

+2.02 right angle W. .086 + set post for  $\frac{1}{8}$  S. cor.

Tamarac post {  
 B. Pine 5" N 49°-20' W .77  
 Var. 0°-40' E. {  
 " " 3" N 22°-40' E .856

June 27 '34

12.402 set W. .086 + set 3" pipe  
 Same trees read: {  
 B. Pine 5" N 33 $\frac{3}{4}$ ' W 1.066  
 " " 3" N 15 $\frac{1}{4}$ ' E 1.22

Random continued.

12.32 Hub at Record distance

12.612 To E+W wire fence 72' E of fence S.

12.275 Fall .015 W. of old stake (down)

24.239 Hub .173 W

27.00 " .19 $\frac{1}{2}$ June 21<sup>st</sup> P.M. Same party.

31.50 Hub at N. edge Swampy draw NW + SE.  
 + turn angle S to W to Orig. 1/4 cor.  
 81°-30' .227 ch.

$\therefore 31.534$  right angle West to 1/4 S.  $\left. \begin{array}{l} .225 \\ .00714 = \tan 0^{\circ} 24\frac{1}{2}' \\ 80^{\circ} 52' E \end{array} \right\}$   
 $\therefore$  true course from tp. cor. =  $\left. \begin{array}{l} 0^{\circ} - 27.5' E. \\ 50^{\circ} - 28.2' E \end{array} \right\}$

Said Orig. 1/4 S. between 1+6 identified as follows:  
 Found old post down (in Swale) agreeing reasonably well with remains of 2 stumps.

Memoire Shaw says he has replaced this post more than once.

Drive new pine post + mark:

True Az. {  
 B. Pine 7" N. 20°-30' E. .89  
 W. Pine 5" N 26°-25' W. .989  
 Mag. Var. 0°-33' W. Orig. Stp N 40°-50' E Record

$\therefore 32.32$  (Rec.) -  $31.534$  (M) = .786 short  $\div 32.32 = .0243 \times 12.32$   
 $= .30$   
 $= 12.02$

# East Boundary (continued)

Random & S 1/2 Sec. 1 - 38-5

July 17<sup>th</sup> 1933 - Overcast - 75°

R.H. Hall with Duszynski + Gerges - chaining  
Roseneck, M. Lead + Pogorec - cutting

Correct random & N. Fractl 1/2 Sec 1  
Transit at Origl 1/4 S. cor.  
Vernier on 179° - 32.5' Backsight on true line N.

Mag. Variation on 0° Azimuth = 0° - 33' West.

Run South (Azimuth 180° - 00') on random

0.0 Origl 1/4 S. cor. Leave bottom at post.

9.38' Hub on ridge (.08 E)

Observe Sun. Time my watch (3 1/4' fast)

① 9:34 AM alt 50° + 09'  
AZ 114° - 51.5  
calc .. 114° - 58.5 ✓

② 9:36.5 alt. 50° - 32'  
AZ 115° - 38' ✓  
calc. .. 115° - 35.5

17.292 Hub on ridge (.147) E. Open poplar barrens  
Camp flag bears 353° - 05'

19.95 Fall .10 W. of an old 1/8 post (down)

20.01 right angle E. .17 + set 1/8 Sec. Cor.

Pitch pine post. { B. Pine 6" N 53° W .673  
(Oct. 23<sup>rd</sup> 33) { " 6" S 14 1/2° E .58  
W. P. str. 40" S 41° E 1.247  
Some ones B.T. S 75° E .252

# Random continued

22.106 Hub. (Mag. var. on 0° Az = 4° - 20' West) (.187)  
25.00 Tally picket  
27.62 E old RR grade (Prs. S 75° W ±)

28.098 Hub (.238)

30.528 " (.257)

34.417 " (.292)

39.19 " + brow of slope S. (.332)

40.00 Hub - Facing on origl B.T. str. Prs. S 84° - 36' E. .653

" - S to E to Origl Corner. 86° - 44' 34 links

∴ 40.019 right angle E. to "  $\frac{.339}{.00848} = \text{tang. } 0° - 29 \frac{1}{4}'$

∴ true Course of & S 1/2 Sec. 1 = S. 0° - 29 1/4' E.

Identify said Origl Cor to Secs. 1-12-6-7 by old post hole agreeing as near as possible with stumps of 3 originals. Drive new tamarac post + re-mark old " stumps. Nothing else for B.T.'s.

True Az. { Originals  
Var. 1° - 03' E. { S 82° E .313  
N 62° - 50' E .993  
S 8° W 1.011

Govt. meas. to trees must have been made on slope.



## East Boundary continued

Random & Sec. 12-38-5 E.  $\frac{1}{2}$ 

- 68.44<sup>6</sup> Hub + improve transit .25' W. to agree better with back line N. of R. River
- 72.57 Hub at N. edge of Jack Pine flat  
Mostly open  
Creek only about 4 ch. West of line here.

Observe Sun. Temp 85° Watch time (3' fast)  
① 3:18.5 PM. alt. 43°-52' Az. 253°-46.5'  
calc ~ 253°-40'

② 3:25  
3:20.5 PM. alt. 43°-33' Az. 254°-14'  
calc " 254°-08'

- 79.98 fall .04 W. of a post  
80.00 Hub + quit for night.

July 20<sup>th</sup> 1933 Overcast - Muggy 75°

R.H. Hall with same crew

- 80.00<sup>2</sup> fall .034 ch. West of Orig. Cor. Secs. 7-12-13-18  
as identified with old post hole agreeing with record distance from both originals  
But West tree was NW instead of SW

Orig. Cor. to Secs 12+13 (38-5) + 7+18 (38-6).

Divide new post + mark new:

Var. 3°-16' E. { B. Pine 7" S 76°-35' W .56  
" " 9" S 52°-00' E 1.698

Orig. { N 64°-50' E 1.18 ✓  
" N 16°-10' W 1.01

Random & Sec. 13-38-5

Run S. 0°-30.5' E on random & 13-38-5

(Azimuth derived from sight on picket over hub 72.57 as N 0°-44.7' W.)

0.0 Orig. Cor. Secs. ~~7-12-13-18~~ ~~19-24~~  
15.417 Hub <sup>7-12-13-18</sup> <sub>(.10)</sub>  
Var. on 0° Az. = 2°-15' E.

20.00 Picket on line

20.118 right angle West .13 + set 1/8 S.  
Dry Jack Pine post.

Oct 18<sup>th</sup> 33  
Var. 2°-04' E. { Jack Pine 7" N 70°-50' W .826  
" " 12" N 33°-10' E .756  
" " 7" S 34°-10' E .775

Random continued

25.00 Hub - land level. low Jack pine growth <sup>(.163)</sup>

## East Boundary

Continued

Random  $\&$  13-38-5 S.33.81 look  $\&$  + W .76  
fail to find lone Y. Pine B.T. noted34.96<sup>2</sup> Hub40.00 " + turn - S. to W. to a post found  
63°-56' .565

∴ 40.248 rt. &lt; W. to said post .508

40.236 right angle W. .261 + set 1/4 S. post

Dry pine post. + mark:

Oct. 18 <sup>th</sup> 33	} Jack Pine	6" N 31°-30' E .97
Time Az.		7" S 72°-25' E .613
Mag. var 0°-45' E		7" S 54°-33' W .85

Auxiliary ref. = notched Jack N 55°-50' E .212  
S 53° E .228

 $\&$  old road NW + SE hrs. S. .345Random - continued July 20<sup>th</sup>40.705  $\&$  old road noted above

Observed Sun at hub 25.00 Temp. 90°  
Time - my watch 3 past Lat 45°-47' N.

① 2:25 PM obs. alt = 52°-18'  
az. 239°-54.5'  
→ calc. 239°-48' = 65' out

② 2:26.8 PM. obs. alt = 52°-03'  
Az. 240°-26.5'  
calc. " 240°-18' = 8.5' out

Random  $\&$  S 13-38-5 continuedJuly 21<sup>st</sup> 1933 Moist 70°R. H. Hall with same party  
Continue S 0°-30.5' E ± on same random  
46.19 look  $\&$  + W .76 for orig. B.T.46.96<sup>2</sup> Hub + offset W. 6" to pass  
Find nothing  
W. Pine 16" Var. 0°-40' E.

Continue on said 6" offset.

60.355 right angle W. .392 + set 1/8 S. cor.

Swiss Finch post + mark.

Oct 20 <sup>th</sup> 33	} Y. Pine	9" S 83°- E 1.288
Time Az.		Jack 6" N 39°-30' E .98
Var. 1°-35' E.		" 6" N 60°-40' W .80'

60.908 Hub (on said offset) and move transit  
6" E into random + continue

66.71 Hub on " (Var 0°-57' E)

70.253 "

71.67 "

74.116 "

74.42 "

78.885 "

$\&$  Cedar Falls Road - WNW  
Hub + turn - S to SW to Vaughan's  
post at Orig. Cor. Secs. 13-18-19-24  
" checks with 3 orig. bearings  
18'-14' 1.67 chains.

∴ 80.471 rt. &lt; W. to orig. Sec. Cor. .522

= Tang 0°-22.3'

Tell E.

## East Boundary

§ Sec. 13-38-5

October 23<sup>rd</sup> 1933 Fair 50°  
R.H. Hall with Anzysynski. Jerga. M<sup>l</sup>Leod. Pogorak

Complete correction of line so a fire lane  
can be cut 33' wide on W. side of range line

Set new post at Angl. cor. 13-18-19-24

New Brngs:

Var. 1°58'E  

Vaughan's ij Pine 12"	{ Jack. 9"	S. 68°-50' W	1.76
		S. 56°-55' E	1.518
		N. 77°- E	.979

§ N<sup>1</sup>/<sub>2</sub> Sec. 1-38-5

See page 2

After completing random line circuit around

Secs. 1-2-11-12-13-14 (exterior)

March 15<sup>th</sup> 1934, a considerable error

was apparent so random § 13 & 14 was

re-measured & found correct. Then § N<sup>1</sup>/<sub>2</sub> Sec 1

" " " " to be 32.536  
instead of 31.534 as first noted.

$$\therefore 32.536 \frac{.225}{.00692} = \text{tang. } 0^{\circ}-23.8' \text{ correct.}$$

$$\therefore \begin{array}{r} 32.536 \\ - 32.32 \text{ Rec} \\ \hline .216 \end{array}$$

$$.216 \text{ Div} \div 32.32 = .0067 \times 20.02 = .134$$

June 29<sup>th</sup> 1934

Re-set <sup>1</sup>/<sub>8</sub> cor. (flanged pipe) .086 W. of Sta.  $\frac{20.134}{12.402} \times .00692 = .096 \text{ W.}$   
 § Road. br. N .56 ch.  
 { Wire fence - S .209  
 § fence cor post S 70° W .672



## Polaris Observation

at Camp for time Azimuth  
75-S. in N $\frac{1}{2}$  E $\frac{1}{2}$  Sec. 1-38-5  
June 26<sup>th</sup> 1933 10:03.5 P.M.  $\pm$  Mc Coy's time  
Place  $\frac{1}{2}$  arrow target on SW cor. Forestry office.

" Hub about 300' S. of do.

Transit at Hub. angle Polaris to target. left to right  
 $1^{\circ}08'$

Calc. by K. + E hour angle table  
U.C. for June 15 8:05<sup>2</sup> A.M. Greenwich.  
 $\frac{26}{11}$  - 43.1  
 $\times \frac{3.92}{43.1}$  7:22.1 June 26 "  
- 1.  
7:21.1 U.C. Blue L.  
- 12:  
4:38.9 hrs.

Std. time do.

10:03.5 P.M.  
+ .8  
Loc. 10:04.3  
+ 4:38.9  
 $\frac{14:43.2 \text{ hrs.} \times .16}{2.3}$   
14:45.5 =  $\pm$

$14^{\circ}40'$	$44^{\circ}$	$(45^{\circ}49')$	$46^{\circ}$	
$14^{\circ}45.5'$	55.6	57.3	57.5	(1.9)
$15^{\circ}00'$	$1^{\circ}01.2$	$0^{\circ}58.9'$	$1^{\circ}03.4'$	(2.2)
		63.2		

Therefore Polaris is  $0^{\circ}59'$  E of north

Az. of target =  $\frac{1^{\circ}08'}{2^{\circ}07'}$  Mag. var. on Meridian  $1^{\circ}42'$  E.

June 27<sup>th</sup> '33 80° Fair.

From observation hub determine true Azimuth  
of our random E N $\frac{1}{2}$  1-38-5 as  $179^{\circ}08'$   
= S  $0^{\circ}52'$  E.

Determine true Az. of random N. line E $\frac{1}{2}$  Sec. 1  
as  $268^{\circ}43.5'$   
= S  $88^{\circ}43.5'$  W.

Make several test observations on Sun. from  
Polaris station & get satisfactory results.

## North Boundary

Random  $\frac{1}{4}$   $\frac{1}{2}$  Sec. 1-38-5 E.June 24<sup>th</sup> 1933 AM

R.H. Hall with Hunt, Albom + Post.

Offset .98 N.  $0^{\circ}52'W$  from Tp. Cor. on random producedthence  $268^{\circ}43.5' = (S. 88^{\circ}43.5'W)$  thru opening  
20.00 ch.falls in lane between  $\frac{1}{4}$  N+S road + fencethence  $S 0^{\circ}52' E$ . .98' To random

= Station 20.00 Wly from Tp. Cor.

20.078 st.  $\angle$  N  $46^{\circ}$  + drive temp.  $\frac{1}{8}$  S.  
peg. (Falls about  $\frac{1}{4}$  town road N.)40.00 hub + turn  $\angle$  W to NW to Orig  $\frac{1}{4}$  S.  
 $80^{\circ}36'$  95 lbs.
$$\therefore \text{at } 40.155 \text{ turn st } \angle \text{ N } \frac{.937}{.02333} = \text{Tang } 1^{\circ}20'$$

$$\text{Cos } \dots = .99973$$

$$\therefore \text{True Course} = N 89^{\circ}57' W \text{ and True length } 40.165 \text{ ch.}$$

## North Boundary

Identify said Orig  $\frac{1}{4}$  S. on  $\frac{1}{4}$  Sec 1 by  
Stamp of S.E. B.T.June 26<sup>th</sup> 1933 Fair 75°R.H. Hall with Duszynski, Tompfer, Roseneck  
+ GergenDig for evidence of orig post but fail to  
find any. Neither do we find trace of  
other bearing.Set transit over B.T. facing (Mag. var  $2^{\circ}55' E$ )  
Set new post N  $25^{\circ} W$  .30  $4^{\circ}47' E$ 

$$\left\{ \begin{array}{l} \text{Line of N+S fence to E } .044 \\ \text{fence West } \text{ " } \text{ N } .038 \end{array} \right.$$
Transit over post + orient to Az. of  $155^{\circ}$  on  
Orig B.T.

Observe Sun

① 9:07 AM Camp time  
obs alt  $47^{\circ}45'$   
Az  $106^{\circ}50'$

② 9:11  
obs. alt  $48^{\circ}18'$   
Az  $107^{\circ}44'$

$$\frac{1}{4} \text{ Squirrel Hill Tower obs } 281^{\circ}53' \checkmark$$
June 30<sup>th</sup>

Check end of random again

$$\text{at } 20 + 20 = 40.00 \text{ ch } \text{Hub turn } \angle \text{ W to N}$$

$$80^{\circ}21' \quad 948 \text{ ch.}$$

$$\therefore 40.159 \text{ st } \angle \text{ N to } \frac{1}{4} \text{ S. } .934 = .02328$$

$$= \text{Tang. } 1^{\circ}20'$$

$$\therefore \text{True line} = N 89^{\circ}57' W \text{ } 40.17 \text{ ch.}$$

## North Boundary - continued

June 30<sup>th</sup> 1934 1933

Run N 89° 51' W on Random 4 1/2 Sec. 1

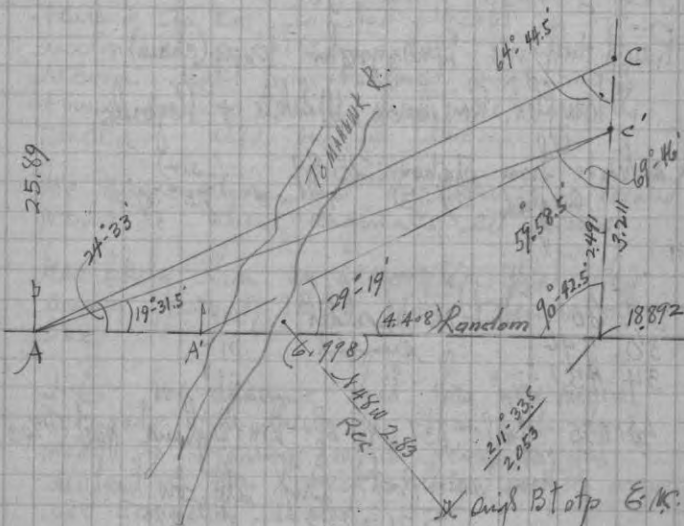
0.0 Our new post at Orig 1/4 S 4-1

Course from random thar. + solar obs.  
Squirrel Hill Towers brs 281° 51'15.00 Hub at W. end Field .008 ch.  
Should have made this 270° 04' ?17.04 Hub at top of slope .009  
Young W. Pine + Jack Growth.

18.892 Hub near top of slope to swamp .01

Orig n.p. BT (stp) for MC. left bank  
beats 211° 33.5 (S 31° 33.5' W) 2.053∴ @ 22.07 Orig MC brs .142 ch. N. of orig random  
(Calc.)Banks marshy + full of Willows. Triangulated over  
bottom since we were more concerned with line  
farther west.U.S. notes read: 61.95 over river + set MC  
{ Sp. pine 10° N 81° W 1.99  
do 10° S 83° W 2.03We find the burned stub of north bearing with some  
marks remaining. Other doubtful.

## Triangulation diagram etc.



$$\text{In } \triangle ABC \quad c = \frac{a \sin C}{\sin A} = \frac{3.211 \times 90439}{41549} = 6.997 \text{ ch.}$$

$$\text{In } \triangle A'B'C' \quad 2491 \times 93829 = 6.999$$

$$\text{In } \triangle A'B'C' \quad 2491 \times 8658 = 4.408$$

East MC would be .148 N. of line

$$\begin{array}{r} 18.892 \\ + 6.998 \\ \hline 25.890 \end{array}$$

$$\begin{array}{r} 18.892 \\ 4.408 \\ \hline 23.300 \end{array}$$

## North Boundary

Random #1 Continued

July 3<sup>d</sup> 1933 Fair 70°+Ray H Hall with Duszynski Gerger (chain) +  
Touffler, Roseneck, Winkle + Pogorelc.Continue from station 25.89 (.017)  
angles 24° 31' 49° 03' 73° 34.5'

27.60'	Hub on shoulder	.015
30.596	" " summit	.016
34.457	" " "	.018

40.055 fall .037 N. of DHVaughans post (1903)  
from said post Orig. stp. br.  
S 21½ E ± 485  
N 72½ E .665

40.057 fall 1.4' = (.0212 ch.) N. of old post hde  
agreeing better with old bearings.

$$40.057 \begin{array}{r} .0212 \\ \hline .00053 = 0^{\circ} 02' \end{array}$$

$$\begin{array}{r} 40.057 \\ - 34.447 \text{ BS} \\ \hline 5.61 \overline{)0212} \\ .0038 \\ = 0^{\circ} 13' \\ \underline{270 \quad 03'} \\ 269^{\circ} 50' \end{array}$$

$$\begin{array}{r} 2 \overline{)40.057} \\ 20.028 \\ - 18.892 \\ \hline \frac{1}{8} = 1.136 \text{ W of hub} \end{array}$$

N.B. — Decide to ignore both M.C.s at river since their distance from orig. bearing to cor. is too great in both instances and since true courses of record dist. from bearings might not bring corners where they were originally placed — also out of line.

The assumption that the corners so located would be where originally set seems less likely than an assumption that the survey party of 1860 placed them about on line.

D.E. — we assume that they were more accurate with their line than with their meas. to bearings, which, being so far distant + thru thick foliage, probably were less accurately located. ✓

## North Boundary

Random # Sec 2.

July 5<sup>th</sup> 1933 Overcast to fair 70°  
R.H. Hall with same party plus M. Wiltgen

Orign. NE<sub>2</sub> Set new cedar post  
true Azimuth. (Mag. var. 3°-30' E)

Orign. { S 21° E .50  
N 74° E .66

New { W. Pine 22° S 16°-30' E .642  
Jack 14° S 43°-20' E .763

Run West (270°-01')

0.0 Sec. Cor.

8.414 Hub .032

10.442 " Young people + scattering jack

13 On open summit (Var. on Meridian 4°-09' E)

15. bottom of open hollow NW SE

18. Tally 2/3 up W. slope .052

18.195 Pitch hub .068

20.096 st. = S. .075 ch. + set 1/8 S. cor.

True Az. Var. 3°-35' E	}	Jack 5" S 46° W .727
		" 8" N 32°-50' W .442
		" 6" N 80°-10' E .681
		U.P. stp. 20" S 12°-30' E .241

P.M. Same crew except Achilles Casadonte  
replaces Tom after continue random

35.00 Tally stake in line

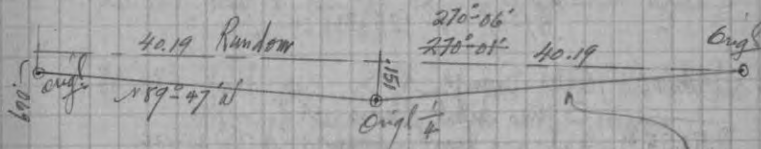
39.34 Invariant + turn = left to probable loc.  
Orign 1/4 S. 10°-04' .865

40.00 Hub on W. slope knoll

∴ 40.192 st. = S. .151 to possible Orign 1/4 S.  
by record course + dist from 2 stumps.  
Ground has been cultivated.

Will continue this random to NW cor.

N.B. in April 1903 DA Vaughan ran this line 3°-30' E var  
at NW x full .45 x dist 80.30  
Later he found the 1/4 S.



$$.151 - 40.19 = .00375 = \text{tang } 0.13' - 270.06 = S 89.53' W$$

.151

.069

.082 = " = .00204 = 0.01' + 90.06 = N 89.47' W

## North Boundary.

Random Ht W $\frac{1}{2}$  Sec. 2July 6<sup>th</sup> 1933 Fair 80°Rt Hall with Dzyzynski + Jergen (chain) + Rosenack.  
Pogorelec, Willgen + Cashdante39.34 Observe Sun. time my watch (3' fast)  
Az of line assumed as 90°-01'① 8:54.8 - 3' = 8:51.8  
alt 45°-15' Az 104°-24.5'② 8:56.8 - 3' = 8:53.8  
alt 45°-36' Az 104°-54'44.32<sup>2</sup> Ht + obs Sun (14 $\frac{1}{2}$ ) S.③ 10:12.5 - 3'  
57°-37' + 125°-31'

44.60 Enter Swamp N+S

Spring creek runs Nly.

51.75<sup>8</sup> Ht + leave swamp N+S .12654.82 " (Var. 2°-57' E)  
old wrecked house br N 9 $\frac{1}{2}$ ° E 3 $\frac{1}{2}$  or 4 ch. ±

60.00 Tally hut

60.287	rt. + S. - 11	+ act pine post for $\frac{1}{8}$ S.		
Oct. 26	} N. Pine 9°	N 89°-37' W	2.328	
Var 2°-52' E		} d'W " 9°	N 8°-24' W	2.77
			bad butt	

63 $\frac{1}{2}$  top of slope + gain plateau

64.601 Ht

69.815 "

69.815 Observe Sun Temp 90°

① 2:38 PM - 3' alt. 51°-34' Az 245°-59.5'

② 2:40 - 3' " 51°-15' " 246°-34.5'

76.65 Tang to old road SE + SW  
77.145 Ht (.076) (Var. 2°-26' E)July 7<sup>th</sup> 1933 Overcast 75° Same party  
Continue random

Call course of random 270°-06' (per solar results)

79.50 Enter Swamp

78.961 Ht + turn left to Origl. Cor.  $\frac{34}{31} \frac{35}{2}$   
(Var. 2°-45' E)80.38<sup>2</sup> fall 069 N. of old post hole (the only hole)  
agreeing reasonably close with remains  
of 4 origl. bearings. The pine stub has all  
marks OK. SE. spruce is down.  
boxing plain. Other 2 not so evident.Set dry, scribed cedar post in hole - Nothing near  
for new bearings.

Origl's bear:	} M. Pine BT	S 54°-20' E	.21	
		} Sp.	N 61°-30' E	.187
		} do	S 52°-40' W	.125
		} do	N 51°-34'	
		51 $\frac{3}{4}$ W	.155	

## North Boundary.

West on Random 4<sup>th</sup> Sec. 3August 9<sup>th</sup> 1933 Overcast 70°R.H. Hall with Geger + M<sup>rs</sup> Lead (chain) + Pogorek.

Instrument over post at Orig. NE cor

Az. of random 4<sup>th</sup> 3 = 180°-00'Back sight to picket on random 4<sup>th</sup> 2 = 87°-23'

Var. on 0° Azimuth = 3°-03' E.

Run West (270°) on random

0.0 Sec. Cor in swamp

2.00 Leaves Swamp N + SE

3.04 Hub in old RR - curves SE + WNW

7.212 " " same " WSW

+ enters marshy bottom

20.069 cal.  $\frac{1}{8}$  S. cor. 3' S. of random19.935 leaves swamp + meas. up slope  $16^{\circ}36'$   
+ 1.706 = 1.781

21.541 Transit for slope =

22.16 Hub. east edge plateau - brushy  
Var on 0° = 2°-14' E.

32.70 old road N NW

32.87 (US Rec 32.82) Fall 24' S. of remains  
of hemlock line tree?

37.825 Hub

40.00 "

Var 2°-14'

August 10<sup>th</sup> 1933 70° to 80° FairR.H. Hall. Dwyzynski. Geger. M<sup>rs</sup> Lead. Roseneck  
+ Pogorek.Pick up our random 4<sup>th</sup> E  $\frac{1}{2}$  Sec. 340.138 fall .5' = 6" N. of Orig  $\frac{1}{4}$  S. corDigs 5' Pine post in old hole agreeing  
with remains of the 2 HemlocksMark: { Piple 4' S 38°-50' W .715  
{ Notch in post of 24" W.P. stp  
is 3lks from E of  
N 37° E 1.48N.B. At 40.00 observe sun 3 times. results  
indicate our random to be N 89°-57' W.  
40°  
∴ N 89°-58' W = 4<sup>th</sup> E  $\frac{1}{2}$ West (270°) from Orig  $\frac{1}{4}$  S on 4<sup>th</sup> Sec 3

0.0

4.23  $\phi$  old RR N NW

14.546 Hub Var 2°-31' E.

 $\phi$  Squirrel Tower hrs. 292°-31.5'  
hr. plateau NW slope to swamp

19.552 Hub

20.029 fall .039 S. of an old post &  
enter swamp N + S20.056 calc. for  $\frac{1}{8}$  cor = .108 S. of random

## North Boundary

Continue West ( $270^\circ$ ) on  $\frac{1}{2}$  W $\frac{1}{2}$  Sec. 325.46' Hub on W. end of ridge  
Small poplar + W. Pine28 ± br. Swamp  
28.925 Hub  
32.681 "Sept. 5<sup>th</sup> 1933 PM.

Hall - Gager - Dworzynski.

Continue  $N 89^\circ 59' W$  on random33.90 Enter bottom SW  $\frac{1}{4}$  E  
Peaver Flowage - Howard's Creek40.11<sup>3</sup> right  $\angle$  S. to orig. NW cor. Sec. 3

$$\begin{array}{r} .216 \\ - .00538 = \text{tang } 0^\circ 18.5' \end{array}$$

 $\therefore$  true line = S.  $89^\circ 42.5' W$ .

Set new post in wet marsh by approx. record dist. from the 4 orig. bearings. SW stub only one in fair condition. That one has scribe marks. Nothing near for bearings.

May 18<sup>th</sup> 1934

mark:  $\left\{ \begin{array}{l} \text{W. Pine stump } 10'' \text{ } N 25^\circ W \text{ } 1.573 \\ \text{W. Pine stump } 7'' \text{ } N 80^\circ W \text{ } 1.828 \end{array} \right.$   
 Pocket compass  
 $0^\circ$  var.

$$\begin{array}{r} 2 \sqrt{40.113} \quad .216 \\ \hline 20.056 \quad .108 \end{array}$$

Random  $\frac{1}{4}$  Sec. 4Sept. 6<sup>th</sup> 1933 Fair. Seasonable  
Hall - Dworzynski - Gager - RoseneckContinue our random  $\frac{1}{4}$  Sec. 3 ( $270^\circ$ )3.895 beyond NW $\times$ 3 then offset S. .216  
+ back sight on Sec. Cor.West ( $270^\circ$ ) from Orig.  $\frac{1}{4}$  E $\times$ 4

0.0 Our new post

3.895 Hub at top of slope

Observe Sun  $75^\circ F$ .

① 10:18 AM Cont. Std time

obs. alt  $45^\circ 06'$ " Az  $143^\circ 30'$  from lineCalc. "  $143^\circ 30'$  OK

② 10:23 AM

obs. alt  $45^\circ 36'$ Az  $145^\circ 02'$  calc =  $145^\circ 04'$ 

10.00 Tally (correct S. .01)

11.30<sup>±</sup> fall 3' N of a stump. line tree?

18.00 Hub - All flat, scattering small poplar.

20.067 set  $\angle$  S. .022 + set 4"x5" pitch post for  $\frac{1}{8}$  cor on  $\frac{1}{4}$  E
 $\left\{ \begin{array}{l} \text{Jack } 10'' \text{ } S 48^\circ 50' W \text{ } .654 \\ \text{do } 6'' \text{ } S 88^\circ 30' E \text{ } 1.316 \end{array} \right.$ 

Forms P.I. of 10' Curve on Project (16)

22.63  $\frac{1}{4}$  Old Tower trail  
" " to N + S13E

24.809 B.S.

24.877 Hub + descend toward marsh (.027)





## North Boundary.

Continued Random # Sec. 4

40.146 fall <sup>164</sup>/<sub>478</sub> S. of Orig. NW cor.Set new cedar post in old stake hole  
.50 from each of origl BT remains (pine)  
others cannot be found

Set flag at post + return to 13.314 for ←

Balance of day correcting #  $E\frac{1}{2}$  Sec. 4

$$+ \frac{589.560}{14}$$

$$- \frac{90.10}{180}$$

$$= 189.50' \text{ W true line}$$

$$\frac{40.146}{13.314}$$

$$26.832$$

Sept. 8<sup>th</sup> 1933 Fair to overcast 75° 85°

Rtt Hall. Duzymski. Jeger. M. Leod. Roseneck + Pogorelc

Correct last few ch. of random for BS.

Nail set over new post at Origl cor.  $\frac{32}{5} | \frac{33}{4}$ 

Vinner set on 270°-10' + back right on line

Var on 0° Az. = 2°-35' E

Origl.	{	N 75°-50' W	.50
		S 55°-35' W	.50

New - W.P. stp 12' S 28° 10' 9.23

- None other

Run West (270°) on random # Sec. 5

0.0 Origl NE cor. 5 + Observe Sun

① 9:33 Cent Std. time obs. alt 39°-09'  
Az reads 130°-46' ✓  
" calc. 130°-45'② 9:34.5 alt. 39°-20.5 Az. 131°-12' ✓  
calc " 131°-08'③ 9:36.5 alt. 39°-36.5 Az. 131°-46' ✓  
calc 131°-44'1.60 Enter Swamps N+S alder + dead cedar!  
5.246 Hub in "  
7.00 br. "

8.723 Hub. Var 2°-28' here on 0° Az.

9.00 Enter Swamps N+S  
10.49 Fail to find line tree unless it be  
stump a rod ± N. of random?20.00 Tally stake  
Fall .51 S of an old stake

---

20.518	Hub
26.30	br. swamp
27.08	Hub + quit in hard rain

N.B. by scale this has N 27° E PC from  
N. extremity P. 14

Suspended indefinitely.

Bill Board

# South Boundary

Part of § Sec. 34

August 22<sup>nd</sup> 1933 Fair 70°

Ray H. Hall with Duszynski, Genger, Roseneck  
+ Pogorelec

Set post + piece of strap iron at Orig. Cor to  

$$\begin{array}{r} 34 | 35 \\ \hline 3 | 2 \end{array}$$

by record dist. from 4 stumps  
NW atp has pretty good facing

Assume a variation of 2°-30' E

Orig's bear { S 36° E  
               N 67½° W  
               S 60½° W  
               N ½° E

— New { Jack Pine 6" N 61°-15' E .571  
           W " 6" N 36°-30' W .781

Observe Sun. Time Cent. Std. Az. assumed 2°-30' W of mag.

- |           |             |               |
|-----------|-------------|---------------|
| ① 9:38 AM | alt 44°-22' | tz 126°-26'   |
|           | calc "      | 126°-23.5'    |
| ② 9:39.5  | .. 44°-40'  | .. 126°-53.5' |
|           | calc ..     | 126°-48'      |
| ③ 9:41.3  | 44°-50'     | 127°-25'      |
|           | calc        | 127°-06'      |

Run Westerly (S 89°-56' W) before calc. above obs.  
 — .275 Fall 2.5' N. of a post found  
 2.1'

0.0 Our Tamarac post  
 5.749 Hub 1/3 from N. edge

9.63 fall 33° S. of 24" W. P. stump  
 9.73 " 24" N of 20" y. P. "

Which was line here noted?

11.597 Hub

3/5 from N. edge

15.922 Intersect & new project (4) 4.43' S E  
 of angle point

Tangent (4) has S 27°-25' E.

N.B. I ran this by assuming line as True West &  
 turned angle to tangent.

My assumed course of Tang. was S 27°-28' E  
 when I traversed road & .

## West Boundary

Random # Sec. 7

Sept. 9<sup>th</sup> 1933Rt. Hall. Ram Jossart + H. J. McQuinn  
Shown by the orig. 1/4 S. #7  
Set temp. post.Oct. 17<sup>th</sup> 1933 Fair 50°  
Rt. Hall with Rudzinski - Genger + Pogorelc  
Run Northw. on random # 1/2 Sec. 7 by  
Var. 2°-20' E (assumed)

0.0 Our new post at Orig 1/4 bet. 7+12

Observe Sun at post

① 8:59 C.S.T. alt 23°-28'  
Az reads 134°-04'  
"calc 134°-10'

② 9:02 Am.

alt. 23°-44'  
Az 134°-44'  
calc " 134°-40'

5.79 Hub + again observe Sun.

① 9:40 28°-25' 28°-09.5'  
144°-09' calc. 144°-10.5'② 9:43 28°-25'  
144°-50.5 " 144°-51'N.B. Average of 4 observations gives course of  
random as N 0°-01' E ✓

W 7

6.84 Intersect  $\Phi$  new line lane<sup>(14)</sup> under const.

- S to SW 21°-144' ±

15.27 ± fall .95 ± E of blazed y.p.  
estimated 15 yrs ago

15.883 Hub Var. here 1°-55' E.

20.00 Correct E .017 for 1/8 S.

24.064 Hub

var. same

36.727 "

40.00 "

Hub. Fail to find any evidence of  
Orig NW x Sec. 7. Many stumps.  
Badly burned. Unable to  
determine which 2 were "only trees  
standing" in 1860. Found a crooked  
stake. recent. about @ 41.50  
No supporting evidence.Sept. 28<sup>th</sup> 34

Set Sec. Cos .033 E of 40.00 hub.

Truck  
Var 1°-47' E

Scribed cedar post

{ W. Pine 17" N 82°-40' E 3.216

{ Y. " 16" N 53°-52' W 2.779

- No trees closer -

See page 49 for continuation of this line ✓

## West Boundary

W South  $\frac{1}{2}$  Sec. 7

October 25<sup>th</sup> 1933 Fair 30° Snow 9" deep  
R.H. Hall with Duszynski, M<sup>c</sup>Leod + Pogorelc  
havent over Orig West  $\frac{1}{4}$  cor.

Orient it on random line N 0°-01' E. Var 2°-30' E

Bearings Orig S 53°-20' E Record  
New { W. Pine 8" S 40°-10' W .129  
W do 10" S 62°-35' E .73<sup>3</sup>

Produce Same random S 0°-01' W

0.0  $\frac{1}{4}$  post

3.65 Hub

9.869 "

$\frac{3}{4}$  E of W. edge

5.50 Stake at Record for 10" hemlock line tree  
Find nothing

17.716 Hub

19.636 "

25.31 Hub

27.95 Tally stake at record for 12" Hemlocky  
31.78' Hub opposite N. edge open marsh W

Var on 0° = 2°-56' E

33 Side hill - marsh brs. W about 100'

35.74 Hub

37.422 "

39.168 " on N edge plateau about 3 rods E  
of shoulder.

40.00 Tally stake + look for S.W. cor 7  
no luck. All stumps here are large (pine).

Since there are many down + rotted  
hemlocks 1.50 to 2.00 ch E of tally 40  
+ since Jossart claims that W. Schlecht  
concluded that cor. was E of here,  
we searched several hours at that  
point. However - there has been several  
hemlocks, very far gone, near 40 ch.

Random W Sec. 18

October 30<sup>th</sup> 1933 Fair 40° 2" snow melting  
R.H. Hall with Duszynski, Guger, M<sup>c</sup>Leod + Pogorelc  
Search again for NW x no results.  
No indications that we are near the line.

Continue Same random (S 0°-01' W)

" " measurement

46.43 Hub N side Gully

48.55 Picket at record for line tree (20" Hem.)

48.937 Hub (W. edge do)

54.526 "

56.379 " on S. shoulder ridge  
Var 2°-18' E

## West Boundary

Random HW Sec. 18 continued

October 31<sup>st</sup> 1933 Overcast to fair 65°

Same crew

Look again for NW cor 18 &amp; then resume random

56.379 Observe Sun (Vernier set on 180°-01' on random S.

① 2:53 PM CST.  
alt 16°-33' - 1' in adjustment  
12 228-24°  
calc 228°-24'

60.13 Hub on shelf N. slope  
62.394 " " N shoulder  
65.21 " " SW  
N. side large pot hole

① Observe Sun  
1:51.5 23°-22'  
214°-09'

② 1:55 23°-04'  
214°-57'

67.82<sup>3</sup> Hub in E. edge bottom

Small swamp hrs NW 1 or 2 ch.

72.81 Hub on rim SE of swamp var 2°-20' E

November 1<sup>st</sup> 1933 Foggy 50°

Ray H. Hall. Dwozynski. Geiger. McLeod. Pogorelec

Resume

75.346 Hub on SW shoulder - steep slope  
var here 2°-34' E.77.40 Hub + enter E arm of swamp E + NW  
about 1 ch W. of E end

80.01 Hub + look for West 1/4 cor 18  
80.067 Fall .012 E of possible cor. ?  
Large Hem stump but find no  
post hole nor sign of birds.

PM - Find dd down cedar in our line  
well blazed. dd. @ 79 ch. ±

This is first indication that we are near  
line..

81.304 Hub on ridge  
82.25 ± Enter swamp E+W  
82.543 Hub in " Birch 24" spotted for line yrs.  
83.70 ± Head of Birch 24" spotted for line yrs.

84.60 fall .10 ± W. of very dd blazes on Tam. stub.

85.109 Hub in swamp

86.50 Leave

87.884 Tally stake on ridge

89.004 Hub on 2<sup>nd</sup> "

## West Boundary

Random # Sec. 18 continued

November 2<sup>nd</sup> 1933 Overcast 40° Same crew95.00 Swamp hrs  $\approx$  2 rods  $\pm$ 

95.712 Hub Var 2° E.

BS about .10 N of hub

96.30 To Marshy draw SE + NW

98.50 Leave do

100.15 Hub on low ridge  
Narrow marsh on E hrs NE SW  
Creek bottom on W side.

103.25 Tangent to SW end same marsh NE

106.11' Hub + leave bottom

108.67 Fail to find 6" Hemlock

110.57 Hub

112.449 " on W. brow head land

120.02' right angle West .095 to possible SW cor 18

The two pine stumps check OK but are larger  
- than 12" & rotted. Can not identify the  
- birch - only rotted birch wood. The hem.  
is NE instead of SE & uprooted

We grabbed out small birch where post  
should be; no sign of post.

120.216 Hub (Set BS.005 E to miss 8" W. Pine)

November 3<sup>d</sup> 1933 Overcast - Snowy 25°

Ray H. Hall + Same Crew (AM only)

Resume random S<sub>4</sub>122.927 Hub Var 2°-18' E  
+ set Transit 4' E of do123.02 W. Pine 8" on random  
Continue on said  $\frac{1}{2}$  link offset E of random

127.05 Hub on "

130.75' "

135.697 Tally picket

141.784 Hub Var. 2° 09' E  
Observed Sun 30° Fahr.

① 10:32 Ahr 27° 12' 160° 53.5'

② 10:35 27° 22.5' 161° 44.5'

③ 10:39.5 27° 37.5' 163° 00'

Time - my watch 3' slow.

145.947 Tally picket



## West Boundary

Random 4th Sec. 19 S

151.48' Hub in N. edge opening old clearing

157.93 ± Swampsauger Fire lane #2  
to U.E. + W.G.

158.13' Hub

159.80 Enter alder swamp E+W  
are west of old line here

160. Tally peg not lined in

161.11 ± fall .63 ± W. of Orig 1/4 S bet 19 + 24  
H.J. M. = Ginnis finds the cor. 2 old  
posts agreeing with remains of both  
orig. bearings. One has OK facing.

January 4th 1934 Overcast +20°

R.H. Hall with Duszynski, Gergen + Pogorelc

Staff compass only.

Set new post at Orig 1/4 S. between 19 + 24

O'var. Orig BT to. N 3° W record

" " " N 17 E "

New Cedar 5" N 38 E 49.8' = .755 ch.

Prolong our random as accurately as possible <sup>offset</sup>

161.14' ch at E to 1/4 post .627 + .005 = .632

Rough calc. toward the apparent Sec. Cor @ 120.021  
+ rough out line N. to Fire lane

Meas. N. from 1/4 cor on true line

233' ± Fire lane

243.8' Set Cedar post + aluminum location  
plaque

## West Boundary

Random 4<sup>th</sup> Sec. 6November 6<sup>th</sup> 1933 Overcast to snowy 15° + 20°

R. H. Hall with Dwozynski + Gerger  
 Continue N. on same Random Range  
 line from sta 40.00 ch. on page 39  
 = own temp. SW cor. Sec 6

Continue same course (N 0°-01' E) + same meas.

54.50 fail to find line tree noted  
 55.889 Hub. var. here 1° 42' E.  
 all open. dead poplar.

60.00 Picket lined by eye - possibly 1/2" E of line  
 1/8 cor. should go .05 ch. E.

68.25 Summit

69.00 Pitch hub (SE x do)

71.25 Enter Swamp E + SW

77.40 Creek .15 wide

80.00 Tally - Wet snowstorm - wet swamp.  
 Fail to find West 1/4 cor.

✓

## West Boundary

Random  $\frac{1}{4}$  Sec. 6November 21<sup>st</sup> 1933 Overcast +30°Ray H. Hall. Don McLeod. Marshall Colson &  
Frank KoszowskiContinue N 0°-01' E on same random from  
80.00 = Tang. West  $\frac{1}{4}$  (correct .066 E)  
" N of Orig  $\frac{1}{4}$  bet 7 + 1288.64  $\phi$  old winter road N 70° E + SW89.00 B S picket  
Recent spots E + W in Spruce  
Face blazes W. S + E but W 2 rocks  $\pm$ Evidently some one came S. 20ch  
from Tp. line ?95.00 line picket - marked on tree W. & opposite  
Var 2° E in Swamp.100.536 calc.  $\frac{1}{8}$  S. to fall .083 E.103.30 leave Swamp E + W (US Record: 99.50)  
steep slope105.176 Several Norways 15' but no blazes.  
Pitch hub at top of rise109.11<sup>3</sup> HubNothing at 108.35 but find line tree  
about 109.20Random  $\frac{1}{4}$  Sec. 6 continuedNovember 22<sup>nd</sup> 1933 Snowy +25°  
Same party Continue N 0°-01' E109.155 fall 44" W of stub of Orig. line  
tree on ridge. Scarf + 2 inches  
on N side. S. side burned away.  
& Descend into bottom from sd. stub111.47' right angle E | .093 to Orig. Tp. Cor.  
.00083 = Tang. 0°-02.9'  
fell west

$$\begin{array}{r} 111.471 \\ - 109.155 \\ \hline 2.316 \\ 2.29 = \text{Rec. dist. line tree to Cor.} \end{array} \quad \checkmark$$

Orig. Cor. to Townships 38 + 39 N Ranges 4 + 5 E.  
Set pitch post 5 $\frac{1}{2}$ " x 6" x 5" by remains  
of the 4 hemlock bearing trees. The SE + NW  
lines show a notch. Very far gone.Dig but fail to find any sign of post. except  
a small amount of rotted wood at surfaceApprox. True Courses. Mag. var. 2°-05' E  
Orig. loc. of bearings - (all down)

S 23 E	.17
S 35 W	.25
N 66 E	.38
N 9 $\frac{1}{2}$ W	.31

New	W. Pine 4"	N 44° W	.24 <sup>6</sup>
	" " 7"	N 74° 20' E	.62 <sup>9</sup>
	" " 5"	S 33° 10' E	.79 <sup>1</sup>
	" " 6"	S 48° 25' W	1.19

Start W. on Random  $\frac{1}{4}$  Sec. 1-38-4 by 90° off random range  
9.00  $\pm$  quit for night.

## Comment

W Tp. 38-5 as run

N. from  $\frac{1}{4}$  cor bet 7+12:

Meas.	Record	natural features	Pro note
71.25	71.00	Enter Swamp	71.53
77.40	77.50	Creek	78.07
103.30	98.50	leave "	104.23
109.15	108.36	line tree	109.164
111.471	110.65	Tp. Cor.	

111.471  
 - 110.65 R  
 110.65 | .821  
 - .00742  
 Surp. per ch.

Intend to re-measure our random  $\frac{1}{2}$  6  
 + " "  $\frac{1}{2}$  19

On our figures, since our meas. to swamp + creek are OK, we assume all variance in measurement to be north of creek.

Therefore we intend to correct the corners for  $\frac{1}{2}$  6 into line but record dist. north of  $\frac{1}{2}$  7

Intend to look over the  $\frac{1}{2}$  7-18 + 19 on base ground. It is possible some of the corners would be more evident.

I believe we were right on the old line as far S. as NW  $\frac{1}{4}$  Sec 19 + that it should be so re-located rather than curved to a straight line from  $\frac{1}{2}$  7 to  $\frac{1}{2}$  19



E or W  $\frac{1}{4}$  line Sec. 8 - 38 - 5

Feb. 10<sup>th</sup> 1934 Fair 15°  
R.H. Hall, Geo Hunt & A. Thall

Meas. W. thru brush. Pocket Compass Var 3° E.  
from  $\frac{1}{4}$

20.00 Set temp tam. picket in arm of swamp  
22.00 Enter main swamp N+S  
33.00 lv. swamp

February 20<sup>th</sup> 1934 +15° Snowing.

R.H. Hall with J.J. Holek & B. Kuska

Run transit picket line W. from  $\frac{1}{4}$  cor. r. 2° E.

temp stake under transit & turn W to S  
to 33 ch. stake noted above  
63° - 62.5°

∴ " = 2150' from  $\frac{1}{4}$  cor

February 21<sup>st</sup> 1934 Fair +15°

R.H.H. with Ruzynski, Gerges & Wojciechowski  
Continue transit random west.

2150

2542 picket Var 2° 02' E

3042 " 1° 15' E

3335 " at E. edge narrow swamp

3944

4474 " & turn angle right to our flag for West  $\frac{1}{4}$ .

24° 51' ⊙ 49° 40.5'

915.8'

∴ + 831

5305 tall 387.8' S. of W  $\frac{1}{4}$  ?

.0725" = Tang. 4° 09' fell S.

" x 2150' = 155.9' correct.

Correct line E from " thru Cedar swamp.

5319' = Approx true line length.

Orig. NE cor. Sec. 20 - 38 - 5

July 9<sup>th</sup> 1933 R.H. Hall & H. J. Mc Ginnis

Find Orig. cor.  $\frac{17}{20} | \frac{16}{21}$

Tamarac stump OK boxing & some iron marks  
Maple hard to define  
Set new scribed stake. Record from this stp.

Tall tamarac rampike to N 57° E. P.C. 22 steps.  
Another orig tam stands N - E 28.1 feet

- Cannot reconcile this one with notes -

West on Var 2  $\frac{1}{2}$ ° E.

396' E Fire lane #2 (old RR)  
" to S 14  $\frac{1}{2}$ ° W Pocket Compass.

## HW Sec. 2

July 7<sup>th</sup> 1933 see page 25

R.H. Hall. Dwyzynski. Gerges. Roseneck. Pogorelc. Wiltgen  
+ Casadonte

Run South (180°) on Random #2 by angle off  
picket on " #4

0.0 Orig NW cor Sec. 2

1.44 ch. & old RR bed NW

1.78 & " take road

2.158 Hub con. in W. .018

3.20<sup>±</sup> re-enter swamp EstW.

7.57<sup>2</sup> Hub in & Fin line #2 (old R.R.) .038

brs. 89° 3 ch<sup>±</sup>  
+ S 89° W 5 or 6 ch.

14.43<sup>4</sup> calc for  $\frac{1}{2}$  cor st = W. .07<sup>2</sup>

14.54 Record for  $\frac{1}{2}$  all ash + Cedar Swamp.  
15.00 Tally stake on line

18.90 E. end dry knoll a few acres in area

19.255 Hub .096

20.00 Re-enter swamp SW

22.00 Stake in line .11

July 10<sup>th</sup> 1933 Overcast 75°  
R.H. Hall with Dwyzynski. Gerges. Roseneck. Pogorelc + M<sup>c</sup>Leod

Continue same random line S (180°-00°)

19.255 Hub Var 2°-45' E. .096

28.50 Leave swamp ENE + SW

28.715 Hub .143

Rain 10 AM.

30.90 Enter small swamp E+W

33.25 Leave do "

34.29 st. = W. to orig  $\frac{1}{4}$  S. cor .171

.00499  
- Tang 0°-17'

Found 2 old posts (down) and 2 old squared  
W. Pines. Fail to find birches to fit notes  
but am satisfied this is the cor DWaughan  
found in 1903 at which time he found  
evidence. Cor. stands on ridge E+W

Drive new pine post + mark:

0° Var.	S M. Pine	8"	S 37° W	.485
Pocket		6"	S 86° E	.764
Compass				

Continue same random - same course

34.54 Tally at record

37.179 Hub .20

40.30<sup>5</sup> Hub on brow of hill Var 3°-02' E  
Young birch, maple + hemlock  
" slash

Terrain - broken ridges E+W

Observe Sun Temp 75° F.  
Watch time (2 $\frac{1}{2}$  fast)

⊙ 2:39.5 PM.

alt 51-13'

Az 245°-39.5 (calc. 245°-37.5)

⊙ 2:41.8

50°-47.5'

246°-13.5 (calc 246°-16.2')

∴ call random due South.

45.831 Hub on ridge .288

Random  $\frac{1}{4}$  Sec. 2

Continued South

47.65 Old road hrs. Ely. Forks at line  $\frac{NW}{SW}$   
 48.00 Tally stake

53.996 at angle West. .37 + set  $\frac{1}{8}$  Sec. Cor.  
 on  $\frac{1}{4}$  SW  $\frac{1}{4}$  Sec 2.

Oct 27<sup>th</sup> 1933Nov. 3<sup>rd</sup> 25<sup>th</sup> '33

Pine post with rocks around near N.  
 rim of gully, hrs S+W

{ W. Pine atp 40° S 18°-45' E 1.368  
 do 18" N 38°-40' W .38

July 11<sup>th</sup> 1933 Same random continued  
 Same party Overcast 70°F

49.652 Hbr

53.00 "

55.00 Tally picket in bare gully

59.24 Hbr on ridge

62.78 " at W. shoulder old road  $\cup$  3°-20' E  
 Road hrs 62° + 173°

70.792 Hbr

72.462 "

73.702 at + W. to Origh Cor. 2-3-10-11  
 .57

$$\begin{array}{r} .57 \\ - .171 \\ \hline .399 \end{array} \quad \begin{array}{r} 73.702 \\ - 34.29 \\ \hline 39.412 \end{array} = .01012$$

$$= \text{Tang } 0^\circ-35'$$

W.

2/39.412

19.706

- 73.702

53.996 station

- 34.29

$$\frac{19.706 \times .01012}{+.171} = .199 = .37 \text{ correction}$$

Corrected this line S. of  $\frac{1}{4}$  cor. on Oct 27<sup>th</sup>

Random  $\frac{1}{4}$  Sec. 11

July 12<sup>th</sup> 1933 Overcast 80° Same crew

Mark new bearings to Origh NW cor as  
 identified yesterday by True Course & record dist.  
 from the Stp. of Origh. Pine (S 82° W .96)

Aspen not evident.  
 Set pine post

True Az. { M. Pine 9° N 73° E .50 \*  
 W " 10° S 22° 03' W 1.14  
 Var 3°-18' { W " 7° S 14° 25' E 1.022  
 Origh Pine N 82° E .96 \*

\* This y. P. has been faced & scribed on E side  
 in last 70 or 8 yrs. Evidently by some one  
 lacking the field notes.

\* The pine stp. is a good specimen but hangs on  
 rim of old RR cut. (In order to widen  
 this cut for route of Project 10 we removed  
 this stump & placed it in logging museum  
 Rhinelanders. May 18<sup>th</sup> 1934)

May 1934: Plant 4' gal. iron pipe with stamped  
 bronze cap (Wis. Conservation monument)  
 at Origh. Cor. 2-3-10-11 " exposed

July 12<sup>th</sup> 33 continued

Run S 0°-35' W on random between  $\frac{10}{2}$  + 11, & 12  
 prolongation of True line bet. S  $\frac{2}{3}$  Secs. 2 + 3.

O. O Sec. Cor. post

4.618 Hbr

9.12 "

Only spots are E. of us.  
 on N. side West Slough E+W  
 lay off 1.00 ch. base S Ely. 0  
 S to S. 59°-19' 118'-39'

Stadia  $\pm$  149'

Calc 2.288 = 151' ✓

+ 2.288

11.408 Over slough to hbr. flag hrs NE at  
 + 25°-48' N 26°-24' E



## Random 1/4 Sec. 11

S 0° 35' W.

12.63<sup>8</sup> Hub on ridge  
 15.721 " thence gradual slope to S.  
 20.095 Hub Var 3° E. on 0° Azimuth

19.867 st = Westly .114 + set  $\frac{1}{8}$  Sec. Cor.  
 PC. { Jack pine 7" N 8 E .083  
 Var 3° E. { do 9" S 53 W .299  
 do 6" S 36 E .872

Intersectn. of Corrected Sec. line with  $\Phi$  Project 10  
 is 1.02 ch. S 0° 53' W of  $\frac{1}{8}$  cor.  
 hrs S 16° W.

25.00 Tally stake .144  
 29.77 Hub .171  
 22.60  $\Phi$  old trail S E + NW  
 25.85 " " " NE SW  
 27.01 " " " E + W

25.50 } reef of rocks NE + SW  
 29.55 }

32.00 Stake on line

July 13<sup>th</sup> 1933 Overcast 70° Same crew

29.77 Hub Var. on Meridian 3° 33' E.  
 37.70<sup>2</sup> " on ridge .217

39.62 st = E .20 to possible location of  
 Orig. 1/4 cor. between 10 + 11

This is record course + dist from bottom  
 of a pine uprooted + long sunk in the  
 ground - hardly conclusive. Can  
 find no stake hole.  
 - Will correct the line straight

39.734 calc. for 1/4 cor = W. .226 at 90°

40.00 Hub  
 41.70 " Only large W. Pine (down) hrs NEly,  
 L N to E 31° 20' .45  
 43.996 Hub .253  
 47.00 " on hill .27  
 49.637 " in valley .285  
 52.088 " .299  
 55.505 " in bottom .319

July 14<sup>th</sup> 1933 75° 80° Same crew  
 Continue

61.183 Hub + observ<sup>s</sup> Sun twice  
 Results 180° 32' + 180° 34'  
 Ave = 180° 33'  
 $\therefore$  Line apparently hrs. S 0° 33' W

59.601 calc  $\frac{1}{8}$  cor hrs. W. .343 @ 90°

66.048 Hub in bottom 1 rod N. of .38  
 66.40 small round marsh hole hrs E.  
 67.70 over do  
 67.935 Hub about 1 rod S of slough .39  
 69.732 " on Hog back SW. .401  
 Var on Meridian 4° 07' E  
 Small W. Pine - Spruce + Balsam



§ 4 1/2 Sec. 11

March 12<sup>th</sup> 1934 Overcast  $\approx 5^{\circ}F$   
Hall, Duszynski, Gerger + Wojciechowski

Re-measure same random with practically same result + continue

19.992 Hub in river for 2000  
17.776 Squared up stub  $\frac{1}{2}$  lk N. of line  
18.40 Enter Tomahawk bottom - flooded  
N  $22^{\circ}E$ .

21.19 } Tomahawk R.  
22.18 }



30.39 Jr. bottom N + S  
30.991 Spike for hub

34.655 Hub + tack

We miss S. edge State timber road  
37 to 38 ~~at~~ Swamp but Nely

39.926 Hub Var  $4^{\circ}55'E$ .

Aug. Ahlforn has a post set which  
is  $56 \times .56$  + a line brushed  
N thru state timber  
+ E to S  $84^{\circ}24'$

Emil Gerger finds Orig. 1/4 S 3 ch. E.

39.926 turn defl. angle E to SE to point  
2 lks. Nely from Orig. 1/4  
 $10^{\circ}50' \text{ @ } 21^{\circ}40'$  3.175 ch.

$$\begin{array}{r} 3.175 \overline{) .02} \\ \underline{.00630} = 0^{\circ}21.7' \\ + 10 \ 50. \\ \hline 11^{\circ}11.7' \\ \sin " \times 3.175 = .616 \\ \cos " \times " = .3114 \\ \hline 39.926 \\ \hline 43.04 \end{array}$$

$\therefore$  Orig. Random  
= N  $89^{\circ}53.8'E$ . 43.04 st +  $\delta .616 = .005$   
= .611

$$\begin{array}{r} " \\ \underline{.01420} = \text{tang} \\ 0^{\circ}49' \\ + 89 \ 53.8 \\ \hline 90 \ 42.8 \\ \underline{179 \ 60.} \\ = 89^{\circ}17.2'E \\ \hline 43.044 \text{ ch.} \end{array}$$

Set new post for 1/4 S.  
between 11 + 14

U.  $4^{\circ}15'E$ . { Orig. Tom.  
OK  $56 \times W$  .066  
New N. Pine  $6^{\circ}$  N  $62^{\circ}36'E$  1.231  
" Spruce  $6^{\circ}$  N  $10^{\circ}W$  .104

Stp. of Orig. Spruce found, but record meas.  
do not quite fit in.

Random  $\$$  Secs. 13 & 14July 24<sup>th</sup> 1933 Fair 80°R. H. Hall with Duzynski. Jagers (chain)  
M<sup>e</sup>Leod. Roachneck + PogorelecOrig<sup>s</sup> SE cor. Sec. 13 See page 12Run S 89°-36.8' W on random  $\$$  13

(By error I called this course S 89°-53½' W at the time)

0.0 Orig<sup>s</sup> SE cor Sec. 131.869 Hub + obs. Sun 80°  
Cent. Std. Time① 9:54.5 AM alt 52°-48'  
az. reads 123° 18.5'  
calc 123° 08' 10.5' shy② 9:57.8 alt. 53°-15'  
Az 124°-17.5'  
calc = 124° 04' 13.5' shy2.12 fall .24 S. of a blazed poplar  
8.042 Hub + enter "thick" jack 4" dia.  
15.978 Hub20.61 Tally  
22.716 Hub  
27.109 " + obs. Sun  
① 2:13.5 PM alt 53°-02' 236°-25.5'  
calc 236° 16'② 2:16 PM  
52°-24' 237°-13'  
calc 237°-35'34.29  $\$$  old Cedar Falls Road. SWly35.48' Hub in sag.  
40.348 " " Var 2° E on Meridian  
" 1-43 E adjusted

41. Enter low spruce sag.

40.50 = foot Record to ¼ S. cor.  
41. ~~52~~ Tally stake  
42.72  $\$$  Project 4, under constructionJuly 25<sup>th</sup> 1933 Fair 70°  
Hall with same crewFail to find Orig<sup>s</sup> ¼ S. between 13 + 24Find a recent line E+W 40 steps N of 42.72  
Continue same random (S 89°-36.8' W)47.711 Hub  
51.406 "  
52. picket60.401 Hub  
53.90 To 56.00 Swampy ground  
57.767 Hub

58. to 61.60 " "

## Random §. Sec. 13

Continued.

68.563 Hub "t. Scattering pole & jack  
Var on Meridian ~~13-53~~  
3°-36' E.

73.168 Hub observes sun  
80° Fahr.

① 2:40.5 PM 48°-41'  
20 244°-15'

② 2:48 47°-27'  
246°-14'

Lat. at obs. = 45°-46.4' N + 101' 89°-49.2' W

77.34 Hub  
81.00 " at fort. records.

82.44 picket  
82.70 § old trail NW & SE

July 26<sup>th</sup> 1933 Fair 75°

R. H. Hall & same crew continue same random  
Fail to find Orig. SW x Sec. 13

81.00 Offset Transit North .5' = 6" to pass  
85.147 12° N. Pine

85.20 Hub on sd. offset - how of 10° slope

88.25 Picket on knoll - projects W. into swamp

88.90 Enter Swamp at W. extremity

93.75 Leave " N+S

95.745 Hub on said offset

98.851 Hub var. on 0° = ~~5°-13~~ 4°-56' E

102.187 Hub

101.013 "

104.835 " var on 0° Az. = ~~5°-50~~ 5°-33' E.

## Random § Sec 14

Continued

July 27<sup>th</sup> 1933 Variable 75° Fahr.  
 R.H. Hall with Dworzynski, Guger, Rozenek, Pogorelec. <sup>N.E. Lead</sup>  
 Continue S 89° 36.8' W on offset 6' N. of random  
 107.57' Htbr Var. 5-42 5-25' E.  
 110.893 " reduced slope meas.  
 + 1.102  
 111.995 Htbr on orig. random at E. Edge  
 of Swamp N + S  
 Var. ~~4-54~~ 4° 37' E.  
 111.85 10" Balsam on offset line

Resume on orig. Random

119.00 Leave Swamp

119.51 Htbr

121.30 Gort. Record for 1/4 S.

120.70 re enter Swamp SW + NE (irregular)

June 13<sup>th</sup> 1934

Prepared to set 1/4 S - 64 N of 120.456 as calc.

Found Orig. 1/4 S. Old post hole agreeing with both stumps. Scribe marks on both.

Set new scribed cedar post in hole

Var 4° 30' E on Meridian  
 Original { S 59° E .09  
 N 7 1/4° E .09  
 New { Cedar 5' (in swamp) N 73° 20' W .51  
 N.Y. Pine 10' N 80° 45' E .431

Angle + dist from 120.456 =  
 E to NE 55° 04' .729

@ 120.039 st = North .598 to Orig 1/4 S. bet  
 Secs. 14 + 23

July 28<sup>th</sup> 1933 Fair 75° F Same crew as July 27<sup>th</sup>

Continue Same random

122.282 Htbr in Swamp  
 123.25 Leave " NW SE  
 123.977 Htbr on point of land from S.  
 125.00 Enter Swamp NE SW  
 126.25 Leave " N SW  
 129.352 Htbr W. end open space  
 130.10 Enter Swamp NW SE  
 132.129 Htbr on hard spot  
 136.00 Picket on line  
 Thick alder + tamarac

## Random § Sec. 14

Continued

August 3<sup>d</sup> 1933 Fair 70°Rt Hall with Drogynski (transit) Auger + 14' Lead (chain)  
Roseneck + Pogorelec (cutting).

Continue S 89° 36.8' W on random

132.129 Hbr. Var. on Meridian ~~30~~ 4° 13' E

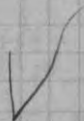
145.00 tally stake

146.724 Hbr

154.77 Creek .05 mms SW

157.30 Leave swamp for island 1/4 Acre ±  
Growth 2<sup>nd</sup> growth W. + Y. Pine  
No sign of line

157.716 Hbr

N.B. Gort notes call for SW cor 14 West of Tomahawk R  
(but Don Joesart says it is on East side  
- possibly 20 rods E of inner.

Continued

August 4<sup>th</sup> 1933 Fair 75° 80° Same crew  
Find orig. W. Pine Bt. stp. on NW end of island  
and old post which may be the orig.Course is about right or dist. meas. 1.784  
Can find no trace of the W. Pine158.60 on random + turn angle W to NW to  
Sec. Cor.  $\begin{matrix} \text{NW to E} \\ 43^\circ 43' & 87^\circ 27' & | & 136^\circ 15.5' & 272^\circ 32' \end{matrix}$ 

= 43° 44' 2.582 ch.

∴ @ 160.466 at 2 Markly to Cor.  $\left. \begin{matrix} 1.785 \\ \cdot 01113 = \text{Tang. } 0^\circ 38.3' \end{matrix} \right\}$ for temporary straight line  
for calc. only.  
(Invalid after finding 1/4 bet 14+23Set new post at Cor. + mark:  
W. Pine 12° S.  $\begin{matrix} 51^\circ 52' E \\ 52^\circ 09' \end{matrix}$  1.99

- March 15 '34 } W. Pine 20" N 32° 12' E 2.134

Var 3° 28' E Orig. Bt.  $\begin{matrix} \cancel{76^\circ 16' E} \\ 76^\circ 50' E \end{matrix}$  1.785

left bank Tomahawk R bear West 6.40 ch. !



## Random

March 6<sup>th</sup> 1934 Fair windy +15°  
 R# Hall with Duszyński, Guger & Wojciechowski

Set hub @ 80.432 on random § 13  
 Thence N. at rt. .895 & drive hub for  
 Temporary cor to 13-14-23-24  
 W.P. stump 12' hrs N 30 W .14

Run N. on random assumed to be meridian  
 by angle § to N off random § 89° 53.5'  
 Var 4° 05' E.

→ Course of this random finally determined  
 as N 0° 16.5' W ←

0.0 Temp. cor. hub .895 N. of random

8.10 Hub  
 13.50 center alders § & W (Rec. = 13.00)  
 15.02 Hub Var. 6° 47' E

19.73 leave swamp W NW  
 21.769 Hub over low ridge  
 27.055 Hub Var 3° 30' E  
 29.141 "



W Sec. 13

Continued (N 0°-16.5' W)

March 7<sup>th</sup> 1934 Fair +2° at 6:30 AM.  
+10° Fahr.

Same crew continue same random

29.141 Hub

Var 4°-03' E on random  
= 3°-46' on Meridian

Observs Sun

Sight S on random vertices on 180°

① 9:19 AM Cent. St. Time  
vert. 26° 14'  
Az 131° 12.5'

② 9:21.5 AM

26°-36'  
131°-53.5'

31.15 old trail E & NW  
32.60 " " E & W junction about 75 W  
33.47+ Hub on N. side of shallow gully  
+ enters higher ground. poplar & jack  
36.318 Hub on flat V 3°-06' E on line  
poplar 2 to 3" predominate

40.00 Pitch hub at US Record - find nothing  
42.718 Hub on N. slope  
43.75 Enter open marsh  
to N 80° W + East  
" 3 ch.± into pocket 1 ch  
wide. Th. S & E to line  
50.55 leave same swamp  
52.276 Hub Var on line 4°-50' E

53.80 Re-enter same swamp N & W  
58.

64.67 leave swamp about 2 ch. E of NW x do  
66.07 Hub  
69.25 NE cor 1 1/2 acre marsh

70. 7 Norways bear E 5 ch. ±

71.151 Hub on ridge E & W V 3°-50' E  
+ enters thick small poplar & jack

Observs sun

+15° F. ① 3:43 PM alt 20°-30'  
Az 238°-42'② 3:46 20°-06'  
239°-16.5'March 8<sup>th</sup> 1934 Variable +15°

Same party

75.836 Hub Var 2° E

77.366 Fall 07 W. of old dead pointed jack  
which I believe is original altho notes  
call for 2 poples.  
This facing marked T58N R5E S13  
faces about N 20° W + was exposed  
in pine days

77.954 at W. 192 + set temp. cor. 11-12-13-14

80.00 pitch hub on summit of small .50 ± of  
N. shoulder. Var 3° E  
No evidence of aspens

Random ~~HW~~ Sec. 12

Same random continued (N 0° 16.5' W)

- 84.48 ⊕ old road NW + E in open valley  
 E + W scattering people + scrub jack
- 86.599 Hub on E edge plateau  
 90. ⊕ body of young Norway spruce W.  
 about 1/4 mile
- 95.253 Hub. Var of line here = 3° 19' E  
 rolling - people 3" average
- 

- 103.815 Hub var. 3° 19'  
 109.70 Enter swamp in W. edge sag  
 gent course E + W  
 US Record = 113.00
- 112.82 ⊕ Kaubeshin Creek .50  
 From NE runs west (Rec. = 115.)
- 113.871 picket
- 

118.618 Hub just S. of bend in river

March 9<sup>th</sup> 1934 fair - 5° Fahr.R. A. Hall. Duszynski. Auger + Wojciechowski  
 continue same random

- 118.618 var. 4° 04' E. from line
- 119.22 ⊕ Kaubeshin creek again  
 " runs S. 1 rod Th. E. 4 ch ±
- 120.00 US. record in ⊕ creek - from N. N. E.
- 120.78 still in " " " "
- 133.78 Picket in N. edge marsh thro N + SW
- 134.098 Hub. (leaning) Var. same = 4° 04'  
 set auxiliary BS 4" E.

Greenz Sun. Temp 0° Fahrenheit.  
 @ 10:21.3 alt 34'-11"  
 147° 07'⊕ 10:47 Am 36°-23  
 154°-29.5

135.00 Edge of swamp - thro N 40° E

- 144.517 Hub - Var on line 4° 33' E.  
 Offset transit 4" E to pass 7" jack
- 154.886 Hub (on 4" offset E.)

Orig. Cor. to Secs. 1-2-11-12

Random offset line from  $\odot$ .

157.307 at West to cor.

$$\begin{array}{r} .105 \\ - \quad 5 \text{ offset} \\ \hline .10 \\ \hline .00064 = \text{Lang } 0^{\circ} 02.2' \end{array}$$

157.341 hub in line with Origl BT's our temp post  
Set last Summer with Pocket Compass.

" Temp. post + BT to  $232^{\circ} 10'$   
=  $S 52^{\circ} 10' W$   
IS record (reversed) =  $S 48^{\circ} W$   
 $4^{\circ} 10'$  correction in .52  
= .038 to more NW

" True cor. location has  $252^{\circ} 00'$  // lks.

" " New Bearings:  
Par on Meridian  $4^{\circ} 43' E$ :  

$\left\{ \begin{array}{l} M. Pine \\ do \end{array} \right.$	$14^{\circ}$	$S 14^{\circ} 06' W$	$.405$
	$26^{\circ}$	$N 87^{\circ} 39' W$	$.278$

June 26<sup>th</sup> 1934 Drogynski + Chappelle + Kirby set  
Wis. Cons. Dept. Mon. at True Cor.  
calc. meas. to bearing  $\checkmark$  OK.

N.B. This cor. identified by Origl marks on Norway  
in NE cor of State timber on hill.

Coat. notes call for "Y. Pine 6' N 48 E .52"

We find this tree facing NE + a post about .60  
dist but " does not  
agree with anything.

✓ Conclude IS deputy read compass wrong.  
Cannot find the Aspen

Random  $\#$  Sec. 24.

March 17<sup>th</sup> 1934  $+20^{\circ}$  Snowing (4" new snow)

RH Hall with A.R. Johnson, A. Thrall + Gadowitz

Project same random  $\#$  13+12 ( $S 0^{\circ} 16.5' E$ )

0.0 our temp SW x 13

.895 intersect E+W random = N to E  $89^{\circ} 53.5'$

1.399 Pro rata division thru 3 miles N + S.

7.889 Spike for hub  
11.09  $\oplus$  Cedar Falls road about 1 ch. SW of  
BC. to SW.

12.436 Spike for hub  
16.57 $\frac{1}{2}$  Intersect some ones E+W picket line  
.249 E of a pole post.

16.83 Hub  
23.226 "

Random 4<sup>th</sup> Sec. 24

March 19<sup>th</sup> 1934 Fair +20°  
R + Hall. Dmzynski. Wojciszowski + Gerge

Re-measure above line + get

23.21 to last hub  
27.907 Hub overlooking open, flooded marsh S  
30.00 Enter swamp  
30.25 " Flowage  
40.00 Set temp. picket  
2" E of line @ root.

40.21 fall .094 E of H.J. M<sup>c</sup>Ginn's stake

No sign of 1/4 cor but on line follows  
blaze (20 pdd ±) closely.

41.66 To hard land W + SE (US Record 72:00)  
45.093 Spike .06 SW of a jack pine  
46.963 Hub in N. edge same marsh

March 27<sup>th</sup> 1934 Fair 20° Same party

46.80 Enter open marsh  
" bro NW 1 ch. thence SW  
" " SE 2 1/2 ch to point from SW

46.963 Hub

50 ± Swamp extends W. 6 ch ±

56.40 leave marsh bro 8 ch ±  
NW + E of

58.75<sup>3</sup> Spike for hub (.053 N. of jack stump  
Var. 4°-22' E on Meridian

59.30 Enter marsh NW by  
E. .75 thence SSW.  
64. Temp. to SW end of point  
leave swamp

74.55<sup>6</sup> Hub on ridge. Var 3° E  
80.67<sup>4</sup> " about west of an old blaze found  
+ .078  
a cut out random is 10 steps E

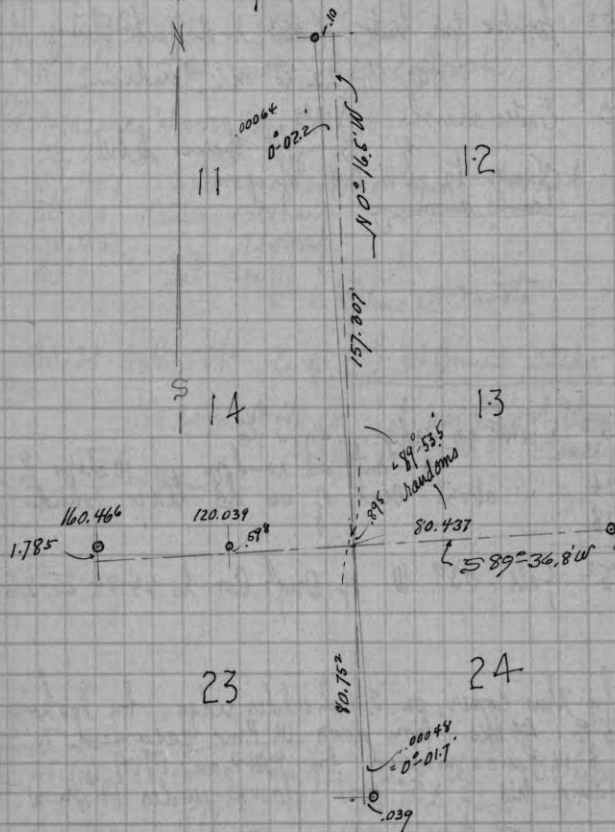
80.75<sup>2</sup> fall .039 W. of Orig. Cor. to 23-24-25-26

Identify this corner, on E. shoulder ridge, by looking  
N 33° E 44 lbs. from down W. Pine assumed to  
the S.W. Pine marked by D.H.V. in 1909  
+ finding his 5" x 5" post down under 14" snow.

Drive new Tamarac post + mark:

Var. 3° E	{	Jack Pine 7"	S 30 1/2° W	1.678
		W. " 4"	S 27 1/4° E	1.157
		N. " 3"	N 26 1/4° E	1.04

## Diagram of Random lines —



$$\begin{array}{r}
 157.307 \\
 + 80.752 \\
 \hline
 3) 238.059 \\
 \underline{79.353} \text{ per mile } N+S \\
 - 80.752 \\
 \hline
 1.399 \text{ S. of temp Cor.}
 \end{array}$$

N.B. — I divided the 2 miles  
E+W + run N+S random  
to locate finding N ¼ 23

∴ Must move temp SW ¼ 13  
fairly E.

Coincidentally the straight line from SW ¼ 24 to NW ¼ 12  
passes thru sta. 80.437 on E+W random, almost exactly!

Had boys re-meas. random ¼ 13+12 + § 13+14 OK  
Searched again on bare ground for SW ¼ + S ¼ 13  
no luck

Since Finding Orig. S. ¼ of Sec 14  
The pro-rata division on random § 13+14  
comes at 80.167 (S. .504)

$$\begin{array}{r}
 \therefore \text{§ } 13 = 589^{\circ} 15.2' \text{ W } \quad 80.169 \text{ ch.} \\
 \text{§ } 14 = 188^{\circ} 48.2' \text{ W } \quad 39.887 \text{ ch.} \\
 \text{¼ } 24 = N 0^{\circ} 06.5' \text{ W } \quad 79.353 \\
 \text{¼ } 13 = N 0^{\circ} 44.2' \text{ W } \quad \text{"} \\
 \text{¼ } 12 = N 0^{\circ} 04.8' \text{ W } \quad \text{"}
 \end{array}$$

## Random #W Sec. 14

March 12<sup>th</sup> 1934 PM  
 Hall. Quozymski - Geger - Wojciechowski  
 Run southerly from Crigh Cor. 10-11-14-15  
 Turned off S 2:16' E as near as possible, from  
 our random #14

0.0 Sec. Cor. our post  
 .03 Aug. Ashborn's? Stake  
 3.015 Hub  
 enter swamp

March 13<sup>th</sup> 1934 Overcast 35° Same party

6.014 Tack on log for hub in swamp  
 8.00 leave swamp SE + NW  
 10.94 Hub (W. edge) Var 4°-10' E on 0°  
 on shoulder - swamp E 1 ch.  
 13 to — along edge same "  
 14.00 Re enter same swamp NE SW  
 14.72 Leave swamp  
 14.42' Hub  
 15.40 Re enter same swamp SW  
 18.821 Hub

22.974 Spike (3.7' NW of a balsam)  
 23.73 leave swamp NE + SW  
 27.239 Hub in thick 2' + 3" jack growth  
 30.606 " (Var on 0° = 4°-50' E)

March 14<sup>th</sup> 1934 fair +15° Same party  
 31.84 E dd river road NE SW  
 34.30 Enter swamp " "  
 35.802 Hub (Var. on 0° = 4°-35' E)

38.065 picket  
 38.9? Hub

40.20 In swamp  
 43.905 Spike on hill - 1st hub (.058 S. of jack stp.)  
 + about 6' NW of 26' P.  
 spotted 15 yds ago?

## Random 4th Sec. 14 continued

March 15<sup>th</sup> 1934 mostly fair Same party

46.45+ Spike - about 11' SE of tall jack  
47.00 Center marsh bottom NE SW

51.60 @ Tomahawk R. NE & SW

68.468 to base of slope - lv. Swamp.

+ .095

68.563 + 1.00 on slope  $20^{\circ}39'$  = .936

.936

+ 69.499 Spike on ridge

+ .303

69.802 " in right of Sec. Cor.

Turn angle left to " 14-15-22-23 <sup>orig.</sup>

$4^{\circ}26'$  @  $8^{\circ}52'$

9.593 ch.

Sin " = .0773 x " = .742

cos. " = .99701 " = 9.56

∴ 69.802

+ 9.56

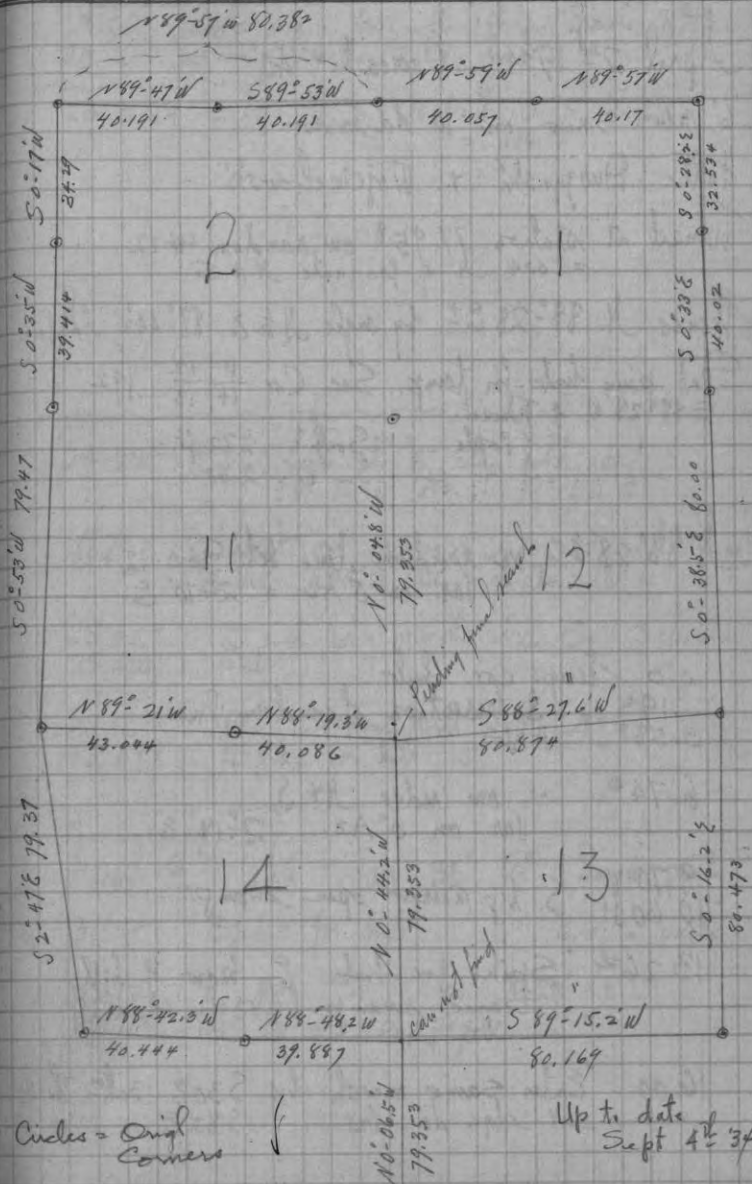
79.362 right angle E. to on post .742

.00935

= tang.  $0^{\circ}32'$  fell W.

- Must look for 1/4 S when snow goes.

## Calc. True lines



## Random § Sec. 12

April 2<sup>nd</sup> 1934 Overcast 40°

6" new snow on 16" old snow

Hall, Duzynski + Wojciechowski

Transit at station 77.95<sup>b</sup> on random 4+12  
= .004 N. of pro. rate N + S.

Hence N. 88°-28' E± by angle N to E 88°-44'± random

Set pine hub for temp. Sec. Cor  $\frac{11}{14} \frac{12}{13}$  .192  
S 88° 28' W of Transit.  

{	People -	South±	1.72 ft.
	" -	S-E.	2.60.

N 88°-28' E± on random line bet. Secs. 12 + 13  
Var. on 0' Az. = 2°-10' E.

0.0 Temp. cor. hub

.192 Intersection of random lines

3.585 Hub

6.744 on ridge N+S  
Var. on 0' Az. 2°-18' E.

9.70 } S. tip narrow open swamp.

10.60 }

13.262 Spike for hub. E. brow of hill  
Same swamp 1.25± ch wide  
trs. N. " "

16.00 Enter same marsh trs S 30 E 3ch± Th. E.  
" N edge do trs S 82 E

18.00 leave do. trs. N. 1ch. Hence W by

20.16 Pine temp  $\frac{1}{8}$  S. hub

20.043 calc.  $\frac{1}{8}$  S. to fall .0175 S.  
= 1.16 ft.

24.285 Pitch hub at W. edge old road  
Var on 0' Az. 2°-53' E.

27.75 Intersect on compass traverse of old trail  
78 lbs. N 46° W (BC) of sta. ⑧

25.00 ± E. end long marsh trs. S. 3ch ±

28.416 Hub

32.16 ? Old Stevens Mill road (N+S)

33.498 Spike for hub

April 6<sup>th</sup> 1934 Fair 35° 40° Same party

37.196 Spike for hub .112 E. of a people

38.72 § Hury. #4 - trs. N 20°-44' E

40.200 Tack in tip. of people



Random  $\Phi$  Sec. 12

- Continued -

40.26° Calc.  $\frac{1}{4}$  S to fall .039 S.  
= 2.57'

42.71' Spike for Hub  
Var.  $\frac{17}{4}$  N $\frac{1}{2}$  E of 8" Jack.  
Var. on 0° Az.  $1^{\circ} 45' E$ .

46.066 Spike for hub on Hill  
.077 S $\frac{1}{2}$  from a pole.

48.43 Old road N $\frac{1}{2}$  E + SW  
50.00 Enter spruce + Tam. Swamp  
hs N 20 E + S 40 W

60.479 Calc.  $\frac{1}{8}$  S to fall .06 S.  
= 4'

62.60 Creek from SW

64.65 " " S

junction just N of 64.65

67.30 Leave Swamp

hs N.  $\frac{1}{2}$  ch $\pm$  thence N $\frac{1}{2}$  E

68.772 Spike on bare knoll - Var  $1^{\circ} 53' E$

74.352 Spike for hub + turn angle (right)  
to our prot at Orig' S $\frac{1}{2}$  x 12

0°-44'	@ 1°-29'	6.345 ch.
Cos. "	.99992	x " = 6.345
Sin. "	.0128	x " = .0812

$\therefore 74.352$   
+  $\frac{6.345}{80.697}$  fall  $\frac{.0812 \text{ ch. N. of Co 7-12-13-18}}{.00101} = \text{tang } 0^{\circ} 03\frac{1}{2}'$

Random  $\Phi$   $E\frac{1}{2}$  Sec. 11April 7<sup>th</sup> 1934 fair 40°

Hall, Duszynski - Wojcickowski + Richard Roessler

Run W4 (N 88° 24' W ±) from Am Temp. SEx 11

Very poor chance for start.  
transit at temp cor.lay off = 3° 09' E to S. off random  $\Phi$  12

Reverse + run N 88° 24' W on random

0.0 Hub at temp. Cor. 11-12-13-14

+ .176 Calc. cor. to S. .006 ch.

.881 spike for hub  
4. — fall about .20 N. of old blaze  
on jack stub7.909 Spike for hub (.078 W. of a jack)  
Var. on 0° Az. = 5° 44' E17.903 Spike for Hub. Var 4° 25' E  
right on old blazes - down =20.219 Calc. cor. S to fall .039 ch. N.  
= 2.57'20.00 Spike on W. slope Near bottom  
22.00 Enter spruce swamp SW + SE.22.084 Hub + tack Var. on 0 = 4° 40' E  
30.745 Spike in swamp.

35.30 Leave swamp SW NE

37.81 Spike on hill for hub  
Var 4° 30' E.

This is island of hard land.

Angle to 1/4 post (right) 1° 58' @ 3° 55'

Continue meas.

39.60 Enter swamp NE SW

40.263 To Trig 1/4 S. bet. 11 + 14  
→ See page 67 ←

$$\frac{.3781}{2.453} \times \sin 1^\circ 58' = .084 \text{ ch. fall S.}$$

" " " " " "  
Summary.

Meas. =	80.697	
	+ 40.263	
	120.960	
	120.85	
	120.85	.11 amp
		.00091
		= " " ch.

$$\begin{aligned} \therefore .00091 \times 80.80 &= .074 + 80.80 = 80.874 \\ " \times 40.05 &= .036 + 40.05 = 40.086 \\ & \underline{120.960} \end{aligned}$$

$$\begin{aligned} & 80.697 \\ - & 80.874 \\ \hline & .177 \end{aligned} \quad \checkmark \quad \begin{aligned} & 40.263 \\ - & 40.086 \\ \hline & .177 \end{aligned} \quad \text{Move temp cor. W.}$$

April 19<sup>th</sup> 1934 Snow + sleet + 35°

Rt Hall with Drozynski + Wojciechowski

Run due West  $\pm$  from Orig<sup>l</sup> Cor  $\frac{23}{26} | \frac{24}{25}$

by angle off random  $\oplus$

Variation on " 23 called N 0°-16½°W  
Meridian = 3°-20°E

0.0 Our new post at Sec. Cor. correct:

.039 Transit on random  $\oplus$

2.31 Spike for hub .068 N

3.786 Hub + Jack .11' N

4.78  $\oplus$  old crooked road N+S

6.35 Enter pocket of swamp  
by N. 1 ch. thence Wly  
" SW

8.62 leave do " NW + S.

12.173 Hub + re-enter same .356  
ENE + SW

21.389 calc.  $\frac{1}{8}$  S to fall .62° N. of random  
at right  $\angle$

23. Near marsh for low neck NE + SW

23.655 Spike for hub on " .692

.13 NW of pine stub

Osprey nest box SE by 250 or 300'  
(Birds repairing nest)

## Random \$ Sec. 23 continued

40.00 picket  
 40.50 Govt record for 1/4 cor.  
 40.58 Leave swamp NW + SE

No sign of any 1/4 cor.

42.77<sup>8</sup> rt - N. 1.25 ch. + set 1/4 S. cor.

Pitch post

Var. 3°-45' E  
 April 23<sup>d</sup> { W. Pine 32° N 21°-15' E 1.83<sup>8</sup>  
 " " 20° S 50°-10' W 1.147

April 20<sup>th</sup> 1934 Overcast 50°  
 Hall - Zwyzynski - Wojciechowski + Ward Chappelle

Continue same random after looking again for 1/4 S  
 on both sides of point - find nothing.

44.80 re-enter same swamp - NE + rd.  
 (1/4 falls on point from S - notes  
 say all swamp.)

50.58 Leave same WNW  
 and South about 3 rods Th. NW

50.903 Pitch hub - leave N. 1.49  
 Var. 4°-33' E

56.433 Hub " 4°-15' E 1.652

60.00 Picket

63.293 Hub 1.853

64.16<sup>8</sup> calc 1/8 S. to fall 1.872 N. of random

68.50 Re-enter Swamp NE + W.

69.766 Hub at point of hard land 2.041  
 Swamp brs. S. here.

72.70 Leave Swamp S + S

76.00 E Cedar Falls road - straight  
 PC bearing = N 32° E

76.207 Hub 2.23  
 Var. 4°-15' E.

April 23<sup>d</sup> 1934 Same crew  
 Overcast + windy. Snow flurries in PM

79.25 Enter Swamp NE + SW

81.00 US record

82.80 Leave Swamp NE + SE

83.735 Hub Var. 3°-36' E  
 Turn - NW to E to Orig Cor.

126° 04' ✓ @ 252°-08 1/2  
 - 180°  
 3.094 ch.

Sim = 53° 56' = .80833 x " = 2.503  
 Cos. " = .58873 x " = 1.823

∴ 83.735

+ 1.823

85.558 rt. - N. to orig Cor.  $\frac{22}{27} \frac{23}{26}$  2.503

"  
 " ÷ Cos. 1°-41' = True line = 85.595  
 = Tang. 1°-41'

90° - 1°-40.6' = N 88°-19.4' W = True Course

Did not get Solar shot on this.

## Orig. Cor. Secs. 22-23-26-27

Rt. Hall + Don M<sup>e</sup> Lead  
Sept. 22<sup>nd</sup> 1933

Found an old post OK agreeing with Orig<sup>l</sup>  
SW Tamarac - marks OK.  
North bearing up-rodlet

Mark 2 new bearings + meas. S<sup>ly</sup> on  
random found Var 6° E.  
11.53 to E Cedar Falls road

Cor is in SW cor. of Alder swamp  
+ about 2 rods E + 3 rods N. of hard land

April 23<sup>d</sup> 1934 see page 101

Set Wis. Cons. Monument in place of post  
Rocks + water made setting difficult

Var 3°-36' E.	} New	Orig S 27 W .10
		Popple 7" N 53 W .56
		Birch 3 S 56 E .592

" marked on bark only.

✓

## Sec. 27

Orig 1/4 S. between 27 & 34

August 14<sup>th</sup> 1933 Fair 75°

Rt. Hall. with Duszynski - Geger - M<sup>e</sup> Lead  
Staff compass 0° variation

Find good post + old W. Pine BT  
S 72° E .14<sup>+</sup>  
- Not called for in notes -

Re-drive post - On side hill about 1 rod N. of  
creek bottom

}	Orig Brg N 44° E .12
	New W. Pine 24° N 59 W .21 <sup>B</sup>

E on Var 3° ± E.

0.0	1/4 post
—	E new project #4

5.50	drive hub about E new (proposed) rd.
5.80	Old road - crooked
7.24	Present shore (Rec. 7.09)

Find no MC.

All old stps in poor shape.

✓

## Sec. 6

August 30<sup>th</sup> 1933 Fair 75°  
 R.H. Hall. Gerger - M<sup>c</sup>Leod - Pogorelc.  
 Set new scribbled pine post at Orig. cor.  
 to Secs. 5-6-7-8  
 in hole where old rotted post stood  
 Agreeing with course + dist to remains  
 of both orig. B.T.s.  
 Marks still on the tamarac ✓

New Bings  
 Var. 3°-18' E. { M. Pine 11' N 76°-55' W. .52  
 do 12' S 68°-23' W. .945  
 In W. end narrow marsh.

⊕ Sec. 6

November 10<sup>th</sup> 1933 Fair 10° to 25°  
 R.H. Hall + Emil Gerger  
 Run North (N 0°-16' E ±) on random ⊕ G  
 by mag. var. 3° E on hard ground 1.37 N. of SE x

0.0 Orig. Sec. Cor.

.68 leave swamp to NE

1.369 transit station  
 thence meas to summit on slope 16°-12'

" 1.512 x Cos. 16°-12' = 1.453

+ 1.42  
 2.789 Hub on ridge

4.50 Bottom of gully E + W

4.816 Hub

5.682 " on ridge Var 2°-45' E

10.198 Hub on ridge SW of gully 52 NW

12.655 " Var. 2°-32' E  
 Observ. Sun. Transit oriented to 140°  
 sighting d. on line  
 Temp. 25° F

① 3:08 PM Cont. Std.

obs. alt. 11°-27'

" Az 230°-30'

Solar calc " 230°-14'  
 16'

" Course of  
 Random

appears to be  
 N 0°-16' E

② 3:10.8 PM

alt 11°-10'

az. 230°-56'

Calc " 230°-40'  
 16'

17.26 ± ⊕ #14 on curve under const.

17.872 Picket

Enter swamp NNE  
 Hub on hard spot.

Random  $\$$  Sec. 6

November 13<sup>th</sup> 1933 +10° F  
 Overcast - Snow from 1 PM on

Hall, Gurger + M = Lead

Transit at post for Origl SE x

Run N 89° W on random by angle off random  $\$$   
 assuming latter as N 8° 16' E.

→ US notes say - they ran West + fell  $\$$  1° (1.4) ch.

0.0 Origl Sec. Cor.  
 .40 leave marsh in W extremity

1.52<sup>7</sup> Hub

7.05<sup>5</sup> "

10.22<sup>6</sup> " broken ridges

14.77<sup>3</sup> " N+S

15.22 BS

17.55<sup>5</sup> Hub

18.22  $\$$  Truck trail #14

18.90 Enter swamp N+S

November 14<sup>th</sup> 1933 +16° Hall + M = Lead  
 19.89 Tally pickets in swamp

23.00 leave swamp N+S

26.74 Hub

31.37<sup>2</sup> "

36.92 Hub Hilly  
 40.00 Tally picket

Sept 28<sup>th</sup> 1934 Search again for Origl 1/4  
 Find nothing except suspicions looking W.P. boxing  
 about 1 rod N + 1 rod E of 40.40 Not conclusive.

November 15<sup>th</sup> 1933 Overcast 10" snow

R.H. Hall + Don M = Lead 0° to +15° F.

Fail to find 1/4 S.

45.93<sup>2</sup> Hub

49.60<sup>1</sup> " + leave plateau

58.86<sup>6</sup> "

59.68<sup>7</sup> 4' stub of pole in line

64.22 Hub W. of gullies + enter oak +  
 poplar flat.

Appears to be falling N. of SW x

Random  $\pm$  Sec. 6 continuedNovember 16<sup>th</sup> 1933 PM onlyFair  $\rightarrow$  20° 8 or 10' snowHall. Geger + N<sup>o</sup> Lead

70.055 Htbl. Var on 0° Az = 2° 54' E

83.223

83.228 Intersect random range line

at Sta. 40.00

+ 3.238

43.238 N. of orig 1/4 S. 7 &amp; 12

Turn angle. randoms E to S

①

89° = 41'

②

179° = 20.5'

= 89° = 40.6' ✓

③

269° = 02.5'

Orig 1/4 S. between Secs. 19 &amp; 20

Jan'y. 4<sup>th</sup> 1934 Overcast 20° calm

Ray H. Hall. Duszynski. Geger + Pogorelec

Traversed Fire lane #2 (old RR) by compass

Found Orig 1/4 cor 19-20 directly N. of bridge

(calc. North [Var 1/4° E] 543.5')

Found old hollow post 1" above ice agreeing with stub of North Tamarac. The 1/4 S on stub are perfect and with stump of other (assumed to be it!)

Mark new  
over Tam. stub

14° S 82° W 19.9'

August 21<sup>st</sup> 1934

Hall. Koszowski + Borak

Drive new pine post alongside old one +  
drive steel bars 5 1/2' x 1" x 4" ±  
alongside both.

Also find hole of West Orig with marks OK

Had been under ice in January, but grew  
close beside stp. we that was the orig.



## Sec 4

Approx. for tree planting

May 1<sup>st</sup> 1934

Hall: Anozynski, Wojciechowski + Chappelle

Triangulate Sly over flowage from Ough NE cor. into line with old blazes down near E $\frac{1}{4}$ .

@ 13.58 ch. Sly of NE cor. set pine picket for Temp  $\frac{1}{8}$ S

Hence Sly again on same line

14.84  $\frac{1}{8}$  Project #16

20.00 Temp  $\frac{1}{8}$ S

20.10  $\frac{1}{4}$  to old blazed stub.

P.M. Due South from E $\frac{1}{8}$  H with transit

8.30  $\frac{1}{8}$  old road

8.792 picket

12.62 drive pitch hub on S. slope at Record.

Hence by picket lines + pacing.

① N 89°-48' E + hit temp  $\frac{1}{8}$   $\frac{1}{8}$

② South across marsh then 250 steps of high ground to main swamp

③ S 89°-48' W

@ 183 steps =

243 "

388

ch. round marsh

" over do

To main swamp <sup>1/8</sup>S

## Sec. 2.

DH Vaughan's N.  $\frac{1}{8}$   $\frac{1}{8}$

March 9<sup>th</sup> 1934

Hall: Anozynski, Wojciechowski + Gerges

Find Vaughan's post in line of old fence posts N + S.

West bearing OK - other gone

Mark near

over { W. Pine 10" N 6° W 3.467 ch.

{ DHV. Tam. 5' N 76° W .07 ✓

{ " 8 N 4° E .47 apparently gone

Note. In April 1903 DH Vaughan, as County Suror, ran N. from Ough E $\frac{1}{4}$  Var 2° E

.35.89 fell 1.08  $\frac{1}{2}$  E of orig NE x

Rec. 35.00

35.) .89 emp. (.02543 x 15 = .38

$\therefore 15.38 + 20.51 = 35.89$

I did not re-run this line.

However this  $\frac{1}{8}$  + NE x are available for re-set. E $\frac{1}{4}$  cor. about which there is dispute.

Trail # N  $\frac{1}{2}$ October 2<sup>nd</sup> 1934 Hall, Koszynski & B. NovakDetermined Approx. point where # should cross  
Track Trail #14 by compass & tape traverse from  
Approx. #

Run N. on eye picket line. Var. ?

0.0 # #14 E+W  
1.74 = Record S. of Tp. line - fail to find  $\frac{1}{4}$ 

18.40 Gully E+W.

20.50<sup>9</sup> Picket21.52 fall 6"  $\pm$  W of pole I squared last Feb.21.74 Rec. for  $\frac{1}{8}$  S. + run picket line E.21.75 } Narrow marsh E+W.  
22.50 }35.49 fall .12<sup>9</sup> ch. W. of Dings NW cor.All posted in  
Co. Record  
Dec. 28<sup>th</sup> - 1934

PAGES 113-174

BLANK

38-5

Sec. 2. April 22-1903 - D. H. Vaughan.

Began at N E cor set post from steps of 4 orig. Trees  
run West Var  $3\frac{1}{2}^{\circ}$  E 40.00 could not find  $\frac{1}{4}$  p. 44.00 enter  
sup. 52 leave sup. 79.00 enter sup. 80.30 fell 48 N of  
cor. found orig trees. corrected line East and at  
40.09 found step of orig. Trees for  $\frac{1}{4}$  post. This  $\frac{1}{4}$  P.  
is 13 bks South of True line corrected line to NW  
cor. South from N  $\frac{1}{4}$  p. Var.  $4\frac{1}{2}^{\circ}$  38.00 enter Sup.  
32.00 leave Sup. 65.00 rd. runs West. 70.00 set line  
stks and went to East  $\frac{1}{4}$  post. found orig trees  
Run West. Var  $3\frac{30}{60}^{\circ}$  E 2.50 Tomahawk River 100 wide  
Runs South. 45.00 enter sup. 64. leave sup. 80.65  
fell 61 S. of  $\frac{1}{4}$  set by someone and made new  
bearings Birch 6525 East. 13. I did not have field  
notes. and cannot say this post is correct but  
I will use it until I get field notes.

Began again at E  $\frac{1}{4}$  p. orig B.T. Run. N. Var.  $2\frac{1}{2}^{\circ}$   
2.00 Tomahawk River 100 wide Runs S. W. 9.23 same  
stream runs S E 18.40 same stream runs S. W.  
35.89 fell  $108\frac{1}{2}^{\circ}$  E of cor. found an over run of  
89. bks proportioned over run and set  $\frac{1}{8}$  post at  
20.50. Tam. 8 N  $46^{\circ}$  47.

Tam 5 N  $76^{\circ}$  W 7

West  $\frac{1}{4}$  post is o.k. Picked N. E S.  $\frac{1}{4}$  line and cont.  
it South. to 7746 where I found 2 steps. which I  
believe are the steps of the orig. trees. I did not mark  
South  $\frac{1}{4}$  post set. ctr. of Sec. but did not mark post  
or mark B.T.s I also set  $\frac{1}{8}$  P. N. of ctr. and made  
B.T.s but did not mark them. Run East from  $\frac{1}{8}$  p. North  
of ctr. to N  $\frac{1}{8}$  P. on East line and corrected same

INDEX

## Retracing INDEX Tp. and Range

lines

38-5

## INDEX

Section	TOWNSHIP		RANGE		CITY OR VILLAGE	ADDITION
	N.	S.	E.	W.		
1	38		5			E
12	"		"			"
13	"		"			"
1	"		"			W
2	"		"			W
3	"		"			W
4	"		"			W
5	"		"			W
34	"		"			E in part
7	"		"			W
18	"		"			W
19	"		"			W $N \frac{1}{2}$
6	"		"			W

INDEX

FOR WHOM SURVEYED	WHEN			Page
	Day	Month	Year	
E. C. W.		June	'33	2
"		July	"	6
"		"	"	9
"		June	"	16-21
"		July	"	22-25
"		August	"	26-28
"		Sept	"	29-32
"		"	"	33
"		August	"	36
"		Sept.	"	38
"		Oct.	"	40
"		Oct. Nov.	"	41-44
"		Nov. Jan'y	"	45-46
"		Nov.	1933	49-53

INDEX

Interior lines

and Corners.

INDEX

Section	TOWNSHIP		RANGE		CITY	FOR WHOM SURVEYED
	N.	S.	E.	W.	VILLAGE	
	38		5		Minoqua	Detail
8	"		"			N 1/2 in part
20	"		"			Origl NE cor.
2	"		"			<del>W</del>
11	"		"			<del>W</del>
11	"		"			<del>W</del> W 1/2
11	"		"			<del>W</del> E 1/2
13	"		"			<del>W</del>
14	"		"			<del>W</del>
13						<del>W</del>
12						<del>W</del>
1-2-11-12						Origl Cor.
24	"		"			<del>W</del>
14	"		"			<del>W</del>
12	"		"			<del>W</del>
23	"		"			<del>W</del>
23	"		"			Origl. SW. cor.
27+34	"		"			" 1/4 S
6	"		"			Random <del>W</del>
6	"		"			" <del>W</del>
19+20	"		"			Origl 1/4 S.
4	"		"			Random <del>W</del>
4	"		"			
2	"		"			N 1/2 <del>W</del> (Vaughanis)

FOR WHOM SURVEYED	WHEN			Page
	Day	Month	Year	
E. C. W.		July	'33	54
"		Feb	'34	
"		July	'33	57
"		"	'33	58
"		"	"	61
"		March	'34	65
"		April	'34	96
"		July	'33	68
"		"	"	72
"		March	'34	77
"		"	"	80
"		June	'34	82
"		March	'34	83
"		"	"	88
"		April	'34	92
"		"	"	99
"		Sept	'33	102
"		April	'34	
"		Aug.	'33	103
"		Aug + Nov	'33	104
"		Nov	'33	106
"		July + Aug.	'34	109
"		May	'34	110
"				112
"		March	'34	111