

36-6

OLD FIELD BOOK 76

PAGES 1-23

BLANK

Sec. 5+6 36-6

Survey of govt lot 2 in Sec. 6 +
Establish line NE cor. Sec 6 in
particular.

for A.D. Clements - Bradley, Wis.

N. line of 5

June 22nd 1932 Fair. 80°
HC Hall, Ray, Marshall & Clements, Berg. Collet

Shown broomed-up stake in E+W eorner road
for Orig. cor $\frac{32}{5} | \frac{33}{4}$ Slightly E of line of

old fence from north.

Check for orig. B.T. find stp. of a Y. Pine cut low

With var. of 2° E " hrs S 85 $\frac{3}{4}$ ° W 1.49 $\frac{1}{2}$
US Record is 1.45

Drive temp. peg in road 1.45 from stp. on same course.

Var 2° { Tel. pole S 83° W 1.36³
B. Pine 12' N 69 $\frac{1}{2}$ ° W 1.32²
(found marked)

Run westerly on random on var 0°-05' W. To stay
in clear (follows road in general)

-.04⁵ stake said to be Geo. Smith's
0.0 Sec. Cor.
5.65 ± Transit set up - ridge + obs. sun.

#1 Sun 9:10 AM Std. Time

vertical \angle 49°-12'
 \angle E to S 17°-12'

calc.

N 88°-56'-36" W. (Random)

call random
N 89°-01' W

5-36-6

37.00 hub (n. edge do)
.18⁹ N of \angle fence posts
(midway " to \angle grading.)

40.00 hub
40.29' fall .15² S. of iron 3" below surface
in about \angle of road intersectn

Said to be work of Geo. Smith
A blazed 9" Jack hrs SWly .65 from iron

Note - Geo Smith says orig 1/4 was never found here

40.28' = our pro-rate for E+W loc of 1/4 cor +
correction would be S. at rt. angle
.248 + .006 = .254
+ .152
= .406 S. of Smith's iron

54.08 hub on random (s. edge hub) (.21)

60.421 st \angle S. for W 1/8 4th Sec. 5 .372
+ .006
= .378

Drive iron pipe " " .378
var 0°-49° E } B. Pine 12' S 19 $\frac{1}{4}$ ° E .404
July 6th } " " 9' N 26 $\frac{1}{2}$ ° W .555

64.389 hub on random in field about 2 rds.
n. of fence. (.40² S)

Look for Orig. Y. Pine bearing called for in
US notes for NE cor 6 but there is only
one apparent which could have been there
at date of survey. This is shared. Several
have burned out entirely. There is no
evidence that this tree is the one altho it
must have been there then.
- Geo Smith looked here years ago.

NE cor. 6-36-6 E.

We try 6.66 ch. N 32 E PC. from said
sole stump + set temp. trial point. which is

1.19 North of our random sta. 79.59

Random data

79.68 line of old fence S.
80.00 hub at 1 mile
80.63 ± W. edge of field bus N.
+ fall about .85 N. of a new post
+ .63 ± " fence

82.22 ± fall about .50 N. of old Geo. Smith post
82.446 fall .005 N. " recent post
83.53 hub + meas. S. at 90° to look for
stip of orig. B.T. 5.65 ch.

We fail to find anything but old windfall
with exception of stip. described above.

80.56² st. L. S. .497 + .005 = .502 + set
Sec. Corner. Comes in E & W road
July 6th Set a concrete monument 6' x 6' x 36" \diamond
3" below surface.

Mark following bearings. True courses.
var. on Meridian { B. Pine 9" S 51° W 1.006 =
0° - 42' E { " " 7" S 29° 24' E .595 =

Orig. random continued

93.24 fall about .12 N. of a 12" W. Pine Stip. which
may be line tree - cut 3' high.

95.005 hub - (correct S. 588)

" observe sun

#2 3:26 PM. r. 43°-12' - h. 11°-18'

#3 3:28³/₄ PM 42°-44¹/₂' + 10°-46'

N. line Sec. 6-36-6 (random) 27

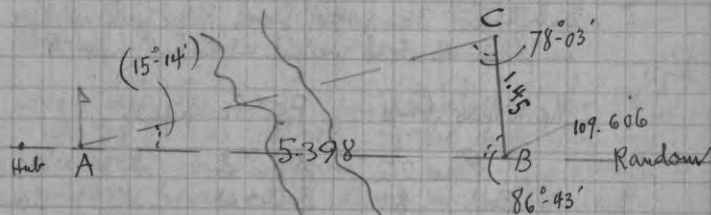
obs. no. ② makes random N 89°-01'-20" W
③ " " N 89°-00'-15" W

100.702 st. L. S. .623 for $\frac{1}{8}$ cor. NW x Lot 2

⑩ Anchored iron pipe (dug in) 2" x 36"
B. Pine 12" S 26³/₄° E 1.01³/₄
" 24" S 37° W 1.47

104.00 hub - Sun 3:57 PM vent. 37°-48'
hor. 15°-11'

109.606 " + lay off 1.45 ch. base NW^{ly}
110. set flag
111. creek - flooded



$$c = \frac{a}{\sin A} \sin C = \frac{1.45}{.26275} \times .97833 = 5.398 \text{ ch } A$$

∴ 109.606
5.398
115.004 to flag A

Solar obs. #4 from C
obs. alt = 24°-58'
hor. < 23°-00'
S.T. 5:11 PM.

makes random =
N 89°-00'-53" W

N. line 6-36-6 (random)

June 23rd Am. same party continue
118.489 hub

120.842 st. \angle S. to Orig $\frac{1}{4}$ cor $\frac{31}{6}$.745 ch

Deep post hole full of rotted wood near
old squared jack + N. line of timber
checks OK with low opp. of SE bearing
by turning var. arc. to $3^{\circ}38'12''$

Stp. of NE bearing reads N18E .452

We drive sash weight found in old hole
var $3^{\circ}38'$ { squared jack 9" x 67 $\frac{1}{2}$ w .117
Y. Pine 22" S34 $\frac{1}{2}$ E .344

West gable end of lodge br S50E \pm

Substitute $3\frac{1}{2}$ x $1\frac{3}{4}$ " Iron Pipe with anchor
in place of sash weight. Did not have R

Mark new logs: P.C. courses.

Y. Pine 22" S56 $^{\circ}$ E .671 = 44.3'
B. " 8" S30W .559 = 36.9'

Same random 4-

120.87 hub (\angle E to S to $\frac{1}{4}$ cor = $87^{\circ}53'$)

128.13 "

132.54 "

137.37 " about 5' SW of 20' spruce

139.90 " gradual descent W to swamp

142.02 " + center swamp
var. on random line here = $1^{\circ}59'$ E.

157.97 st. \angle S. with Pocket Compass 1.84 ch
to orig. cor. Tp. 36 + 37 N R 5 + 6 E

Did not take transit out on swamp.
Deep creek $\frac{1}{2}$ E of corner

Old post sets as near correct as it is possible
to reconcile bearings. The 3 orig. Talmages

still stand with marks OK

Drive I.P. 4' long by the post

The Wis. Hist. Com. has marked a B.M. on a tree
a few rods N. of the corner + this has
confused some people.

Called on Ira Smith (June 23rd pm) and he stated he
had seen the orig. marks on both trees at Orig.
N $\frac{1}{4}$ Sec 6 thirty years ago.

Also that he had searched then for the lone
bearing at NE x G + without success.

Also that Geo. Smith had "established" the $\frac{1}{4}$ S.
bet. 5 + 32 as defined by the angle iron in
the road, and sprung it north far enough to
miss a house which stood on the Tp. line.

The ground west of the $\frac{1}{4}$ was cleared + in a
garden when Ira first saw the place.

No one knows of a bearing ever being seen there.

Conclusion: Apparently Geo + Ira took pro-rated
from SE x 32 to $\frac{1}{4}$ on $\frac{31}{6}$ but Ira
evidently corrected his line to Tp. corner
instead of $\frac{1}{4}$ cor. Geo. had several corners
meant for NE cor G

N. line 6-36-6

Continued

$$\begin{array}{r} 3 \overline{) 120.842} \\ \underline{40.2807} \\ 80.5614 \\ + \underline{20.1403} \\ 100.7017 \\ \times .00616 \\ \hline .6203 \\ + \underline{3} \\ .623 \end{array}$$

$$\begin{array}{r} 3 \overline{) 1.745} \\ \underline{.248} + .005 \text{ ems.} \\ \times 2 \\ \hline .496 \end{array}$$

June 27th 1932 Overcast + cool to fair + hot
8:40 to 5:30
HC# with Ray + Marshall + Messness
Set monuments ② + ⑩ for N. corners Lot 2 as
hereto fore described. Stake # Lot 2

at ⑩ a new 3/4 post found bears
191° - 20' (S 11° - 20' W) .505

Run Southerly (S 1° - 42' W) on a random from our
Concrete monument at ② N 8 x 6
+ W to S. off true line = 88° - 56' @ 177° - 52'

0.0 Mon. at ②
1.172 hub (var of line here 0° - 48' W.)

5.489 " Tally stake on line

10,
15
20
23.213 hub

27.64 " + offset transit 1 ft. W.
to pass 16" Y. Pine
30.06 1/2 " " " "

Random Tp. line N 89° - 01' W.

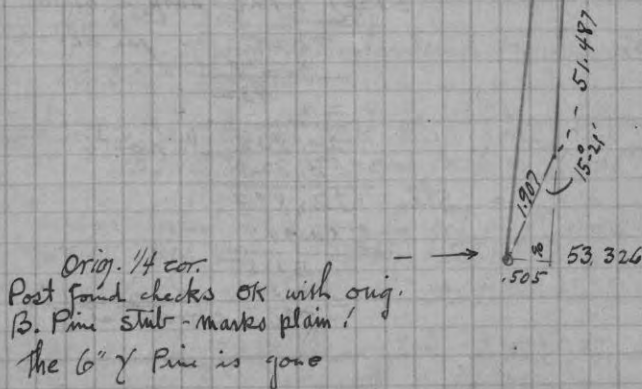
N 89° - 22' W.
TRUE LINE

$$\begin{array}{r} 15 \cdot 21' \cos 96.433 \times 1.907 = 1.839 \\ \underline{51.487} \\ 53.326 \end{array}$$

$$\sin 26.471 \times \dots = 5.048$$

$$\begin{array}{r} 53.326 \overline{) .5048} \\ \underline{.00947} = \text{Tang } 0^\circ - 32 \frac{1}{2}' \end{array}$$

$$\begin{array}{r} S 1^\circ - 42' W. \\ + 15 \cdot 21' \\ \hline S 17^\circ - 03' W \text{ to } 1/4 \\ = \text{Azimuth } 197^\circ - 03' \\ 1.907 \text{ ch.} \end{array}$$



Orig. 1/4 cor.
Post found checks OK with orig.
B. Pine stub - marks plain!
The 6" Y Pine is gone

NE 1/4 6-36-6 E.

31.43 ^{random} hub 1' W of random

(1) 32.894 at L.W. $.31'' - .0151 = .296$ for $\frac{1}{8}$ S. cor.
Drive S.P. + tamarac post

Var $1^{\circ}05' E$
July 15th
(B. Pine 15" N 7° W .328
W " 11" N 75° E .428

33.614 hub on said 1' offset + enter swamp Ered
+ set Φ 1' E onto random + continue

40 1/4 leave swamp

41.464 hub

43 ± enter marsh

50 ± leave

51.487 hub + turn S to W to orig 1/4
15°-21' 1.907 ch. (az. \rightarrow 197°03')

\therefore 53.326 at L.W. to 1/4 .505

Record for NE 1/4 =
our meas.

	52.20
	<u>53.326</u>
52.20	1.126 surp. in 52.20
	.0216 " per ch.
	<u>x 20</u>
	.432
	+ 20 .432
	<u>20.432</u> N. from 1/4
	<u>53.326</u>
= Sta-	<u>32.894</u>
	x .00947
	<u>.315</u>
	<u>.0151</u>
	<u>.2964</u> correct at 1/8

E & W 1/4 line 6-36-6 E.

June 30th 1932 - Rainy.
H.C.H. Ray, Marshall, Geddie + Hennessey

Orig E & W drive S.P. on N. edge post found
our random hub bearing N 17° 03' E 1.907 ch
Set vernier on 17° 03'
True N. = 17° 03' (Mag. var = 0° 02' W.)

(6) Orig. Jack BT brs 238 1/2° (S 58 1/2° W) .61
New Y. Pine " 18° 101° 50' (S 78° 10' E) .343

Run West on random 1/4 line (270° Az.)

= L. 92°-14 1/2' N. to W off line Φ NE 1/4

0.0 1/4 S. cor.

2.723 hub 8 or 10 lk. N. of cutting line

4.00 Enter swamp SW + NE ?

20. picket on line

25. " " "

25.58 Fall about 3 rods N. of angle in shore
no sign of 2 spruces but shore
contour looks as US notes describe here.

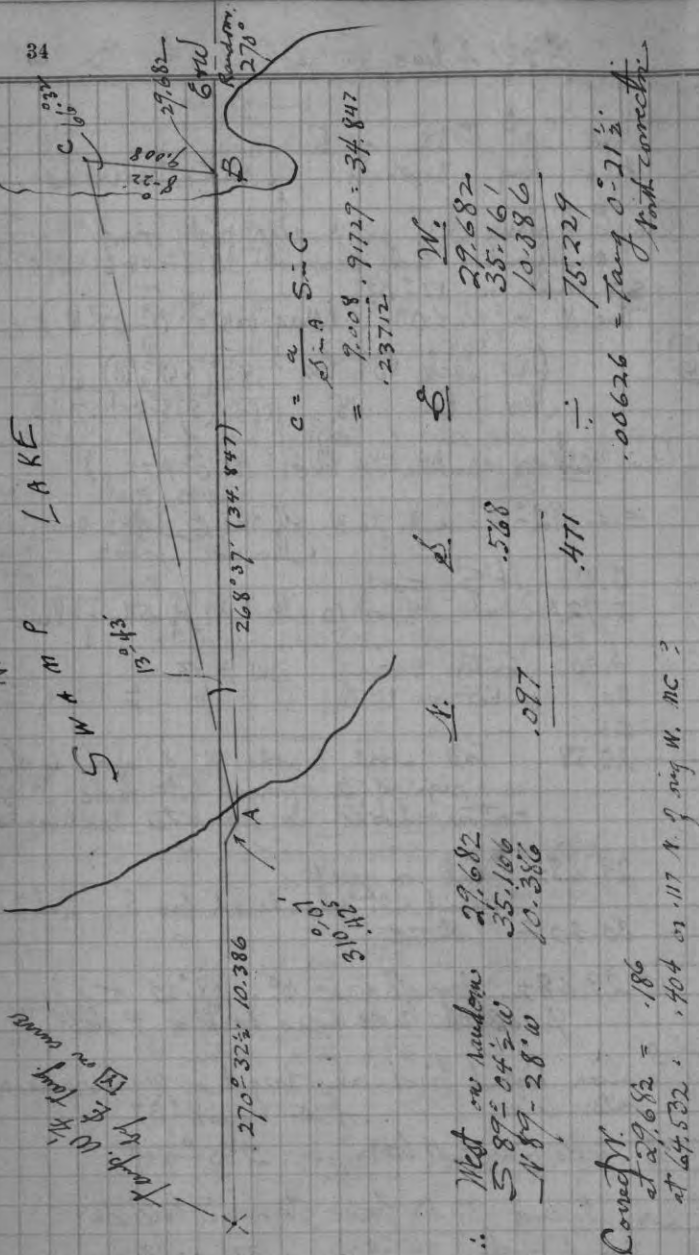
29.682 hub on reef
(point not measured brs S 2ch ±
shore.

At 29.682 lay off base NE (8°-22' Az.)
9.008 ch. N-meas. tack = 9.0085 ✓

Peculiar forked birch only target on W. shore near
water line br. 268°-37'

E gable Bergquist barn 265°-44'

At N. end 9.008 base turn S told to
forked birch 66°-30 1/2' (133°-00' 30")



to W 1/4 by road + attempt to identify same
 Ira Smith said he laid a road E to lake
 from 1/4 cor. Thought some signs of corner
 would remain!

We line of Hwy 7 E from W + from S + find
 old staked hole of some sort but it does not
 check with only 2 y. pine strips left.

Drive temporary hub in said hole
 0° var { Copper tack
 in 7" Oak S26E .304
 do " 7 " " N75E .513

Run trav. Ely in E road
 - .24 1/2 line of fence N
 - .05 E road tangents to N .03
 0.0 Temp. cor.
 10.386 hub near shore.

Set up X about 4' W. of forked birch in line
 Sta 29.682 +
 angle A of triangulation = 13° 43'
 27 25 1/2
 41° 08'
 54° 51'

- Location of orig MC? by S 64 E .51 from only Y.
 Pine strip in vicinity to. 357° 39' .311
- Sta 10.386 from W.
 at " " B5 on 29.682 310° 07' .425

Temp W 1/4 to rt. 1° 28' 10.386 ch.
 Meander loc to Ely .31 1/2

Mag. var on 0° Az. of W 1/4 is 2° 38' E

6-36-6

July 5th 1932 continued
overcast to fair

AM- HC + L. Tresness consult town of Cassian
+ Little Rice records but find only that
Harry Y follows Range line to 1/4 cor +

that the public road to the lake was "surveyed"
Dra Smiths record says 'N 88° E' ?

Ray + Marshall try out various stump combinations
etc. Dig but fail to find any evidence of
corner location

Again line out E of Y turnpike + get about same
result. Take this point for 1/4 S. + bury a
1 1/2' x 36" iron pipe with T on bottom.
(level with surface)

⑧ Forked B. Oak 12" marked 1/4 S on bark
+ BT below S 28° E .363
B. Oak 8" S 39° W .95
(do = N. tree of clump)
Road to lake brs S 89° E

True Az.
V on
Meridian
2° 38' E

Line at last course of traverse (N 89-28° W 10.386 +
at .052 W. of sta. 00 fall .043 S of 1/4 cor. S.P.

∴ 10.386
+ .052

10.438 fall .043 S.
- .00412 = Tang. 0°-14'
- N 89° 28' W

N 89°-14' W 10.438 ch.
= last item of traverse

Substituting. WE have

.428 ÷ 75.28 = .00569 = Tang. 0°-03' W for
True 1/4 line.

∴ 1/4 N 1/2 Sec. 6 calc. 53.76 - .04 or 53.72 / .0097

Record = 53.50
Calc. = 53.72

.00097
= Tang 0°-03'
- N 0°-07' W

N 0°-04' W
53.72

∴ 1/4 626 being
1/4 line "

N 89°-22' W
S 89° 40 1/2' W -

179 02 1/2
- 179 00

0°-57 1/2'
x .383

+ S 89°-22'
40 1/2'

179 02 1/2'

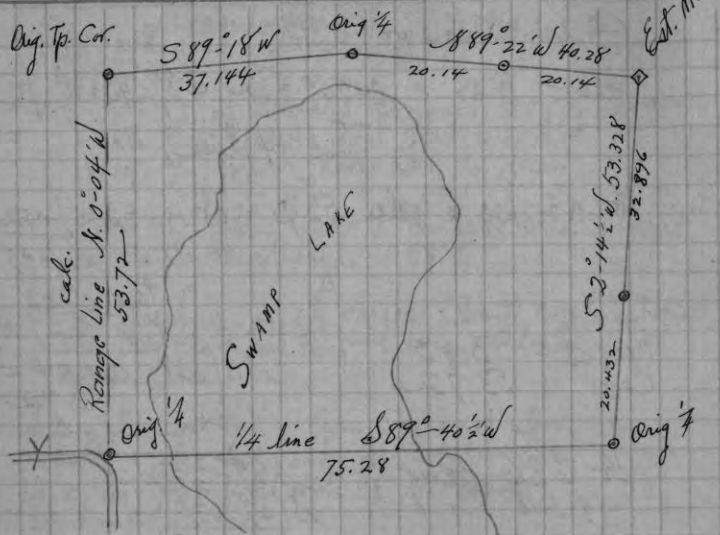
= N 89°-57 1/2' W for 1/4 Lot 2

Drive now for 1/8 cor ⑩ 6/10 th. to far S
Bearings noted are from true point

Run N 89°-57 1/2' W on true 1/4 Lot 2
by 4' 91°-40' off random N to W.

- .296 hub on random offset
0.0 1/8 cor. pipe
.51 Fall .09 S. of Jas. Smiths 1/8 post
6.675 hub on ridge " " line 4 paces S.
9.36 " var of line 0°-25' E here
16. - " "

Orders to suspend temporarily.

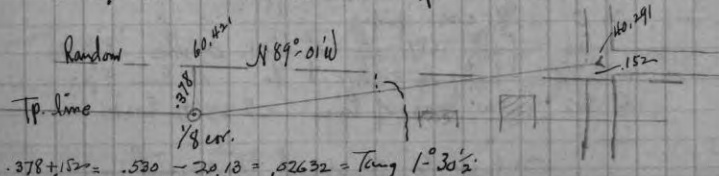
N $\frac{1}{2}$ Sec. 6-36-6 E.

Looked for orig. S $\frac{1}{4}$ by crisscrossing in from W. but failed to find. Found several places where old blazing might mean anything.

Calc for $\frac{1}{2}$ W $\frac{1}{2}$ 32-37-6

calc a straight line from SE \times 32 to $\frac{1}{4}$ $\frac{31}{6}$
 But decide to stake line for road on the offset now used in order to line up with road now on S the north side of the Tp. line on E $\frac{1}{2}$ SE $\frac{1}{4}$ 32 and to avoid farm buildings on Tp line W. of $\frac{1}{4}$

\therefore Stake a straight line from G. Smith's corner for $\frac{1}{4}$ $\frac{32}{5}$
 S 89°-28' W to $\frac{1}{8}$ cor on Tp. line (W $\frac{1}{8}$ on 45)



Trespass on Lot 2 6-36-6

July 15th 1932 Fair + hot
 HC #1: Ray + Marshall. 3 $\frac{1}{2}$ hrs.

NE \times Sec. 6 over monument:

- old G. Smith post 109' W + 1.3' S.
 - New G. Smith " " 3.3' + 27.5' S.

Down corrected $\frac{1}{2}$ lot 2 measuring W. from corrected hubs to determine amount of cutting

at 1.17 ch	Trespass extends	53 lbs W.
1.92		133
5.49		133
10.		121
15.		70
16.50		114
19.		"
20		61
21.20		25
23.20		98
27.64		76
28.85	(end cutting)	48

\therefore 2.81 Acres cut over along E. side
 .93 " " " " "

Look again for orig. MC on E+W $\frac{1}{4}$ line E. shore
 Find nothing.

Expect to locate N+S $\frac{1}{4}$ line + 4 $\frac{1}{2}$ lot 2 later.

PAGES 40-167
BLANK

for G.B. Westbrook, Bradley, Wis.

Checks N. line 36 on account of new
N+S $\frac{1}{4}$ line run by Ira Smith.May 19th 1930 1:30 to 5 pm

H.C. Hall with Ray + Keith + G.B. Westbrook

Find NW corner of Sec. 36 as marked by A.J. Lytle
in N+S Town Road. He has marked a Y. PineN — E — Old post set off at W. side of road
A black pine stump NE checks fairly well. No other
evidence of corner to be seen. Lytle has a cut-out
random E. from here.We chain Ely on Ira Smith's random which is 2.61 ch.
S. of Lytle's at center of road0.0 \pm Turnpike40.08 \pm opposite Smith's $\frac{1}{4}$ post

40.01 find 40 ch. tally

meas. north to Smith's $\frac{1}{4}$ 1.35 ch.80.15 New iron Pipe in Creek which checks OK
5289.90 with old W. Pine (down) + Tamarac stub with
likely looking boxing.This indicates that Smith's location of north end
of $\frac{1}{4}$ Sec. line is OK.Posted in County Record

Lytle's Bearing from his notes

Y. Pine N44 E 97 lbs.

Establish N+S $\frac{1}{4}$ line - north of Center
" " " " " " " " highway NOrdered by Judge Steele and agreed to by
Westbrooks + Knuth - owners adjoining,

North line

December 14th 1931 Foggy to fair 10° to 20°

H.C. Hall, Ray, Marshall,

G. Westbrook Jr. + J. Daley?

Produce Ira Smith's random $\frac{1}{4}$ as near as possible
into Town Rd on $\frac{1}{4}$ 36.Thence \angle E to N $88^{\circ}54'$ 2.623 to NW \times 36Identified said NW \times by intersecting 97 lbs from
Lytle's Y. Pine BT with his random $\frac{1}{4}$ This point comes in E. run, about \pm grading +
checks OK with a stp. NE 37 lbs.Dive 1" \times 36" I.P. 6" below road surface + note
var 3° E } Lytle's Y. Pine N47-10"E .97 = 64'
assumed } New Y " stp. 14 S42 E .596 = 39.3'Run Ely on random from NW \times by \angle 89 $^{\circ}$ 13' S to E.0.0 NW \times 362.003 hub var here 1 $^{\circ}$ 23'E

9.329 "

12.00 to pond N+S } near N. end

13.00 over do

15.695 hub

20.04 temp $\frac{1}{8}$ cor. (Calc. correct. .058 S + $\frac{1}{2}$ 1/8 E)

24.78? hub

30.022 "

40.00

26+5.9° 40.089 N. & S. .117 + establish 1/4 cor.
 Drive 1" x 36" J.P.
 { .04 1/2 S. + .01 3/4 W. of Smith's 1/4 (N. end of fence)
 { .04 E + .02' N of Lyle's

Pocket Compass
 Dec 16th

+ on 2x5 blue toulder S 38 E 1.078 = 71.1'
 + 2x3 " " N 14 E .52 = 34.3'
 + 6x6 " " N 80 W .885 = 58.4'

48.148 hub

53.611

73.56

79.37

about 60 S. of river
 + turn ← Right to Iron Pipe in river
 marking NE cor. Sec. (Orig)
 16°-07' (32=14) .842 ch.

(529.8')
 80.179 fall 234 N. of NE cor.

40.089 .117 for 1/4.

December 15th 1931 Fair. 10° to 25°

Same party

Orig. SW x 36 - Old post + iron bolt found. checks reasonably close with the two stumps remaining. Possibly when post was set, all 4 trees were available.

Drive 1" x 36" J.P. at bottom of post.

Orig. { Stk of B.T. no marks N 29 E .06 ±
 " " " " marks OK S 86 E .40 ±
 New { Y. Pine 15" N 33 3/4 E .307 = 20.3'
 W " 13" S 60 1/2 E .523 = 34.5'

found { D.W. Vaughan's
 20" Y. Pine N 88 E .907 = 59.9'
 overgrown 5"

Run Eastly in Smith's cut out random
 no pickets, no hubs to be found
 var 3° E ±

0.0 Orig. SW x

5.769 hub

13.175 " .169

shore flowage

40.00 drive spike in ice for temp 1/4

40.048 N. & S. for 1/4 cor in flowage + act flag.
 .515 10 or 12' water

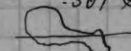
W.C. thence ← N to E 90-44' + meas. E. on true line
 3.40 = (224.4') set WC about 10' from water
 1" x 36" J.P. + cedar post

V. 3° E { B. Pine 6" N 10° W .651 = 43'
 " " 5" N 64 1/2 E 1.075 = 71'

42. ± shore of island

44.055 hub (about .01 1/2 N. of Smith's line)

.567 ch.

leave 1st island 

\$ 36-36-6

continued

55.15 ± to ~~2nd~~ island

56.582 hub

58 ± br.

63 1/2 ± to 37 "

65.16 hub

65.40

+ 1.

66.40

+ .60

67.00

Hilly

78.566 hub + turn ← right to Orig. corner to

Tps. 35+36 & Ranges 6+7

Sin 33°58' v (67°55') 1.846 ch.

" = .5387 x

" = 1.031

Cos = 8294 x

" = 1.531

78.566

80.097

∴ 80.097 at S to Tp. cor. 1.031

+ 40.048 " " for 1/4 .515

.01287 = Tang $\text{②} 44^{\circ} 15'$ fell North.Length of true line = $\frac{5286.8'}{2643.4}$ At Tp. cor. Smith's post? checks OK with bearings.
Drive Iron Pipe at " + find old deep post hole OK!

Ybr. 3 Steps found =

N 76 1/2 W .17

S 75 W .35

S 20 1/4 E .39

Down pine N 52 E .50 ±

* - Courses reversed
from notes

Corner is on N+W. slope of hill

- Mark near { B. Pine 9' S 67 E .58 = 38.3'

{ W. " str. S 42 3/4 W 1.197 = 79.

24"

N + S 1/4 line 36-36-6 E.

December 16th 1931 Fair. 10° to 30°

Same party 8:30 to 3:

flag at S 1/4 not visible from north.

Set transit on N. edge RR cut 40' N. of Ira Smith's
center Sec. which is in " "

Transit in between ds + flag at our N 1/4 cor.

Run North of fall 55/100' E of G.P. = 00021 = 0° 0' 40"

Reference N 1/4 cor as prev. noted + meas. S
along line

5.865 spike in fence line on trial line

Correct W. .0071 + .0035 = 0106

34.058 " summit

Correct W. .0012 + .02 = 021

Now at same trial point 40' N of Smith's center
turn off 40° correct + reversed + run S thru
Smith's center. Continue same meas. from N.

38.25 line in spike near N. side road

Correct W. .02 1/2

38.81 E Co. trunk N.

{ 39.859 spk. under transit - N edge of cut.

{ = 2632.7 Correct W. .0235

40.495 Ira Smith's stake for Centre Sec.
(should go W .024 = 1.58')

40.81 N. rail Sos track - about on line

51.29 hub (.03 W)

64.00 " (.038 W)

80.18 ± to random E + turn ← W to N

90° 23' - 180 - 45 1/2 271° 07' = 90° 22 1/4

80.69 fall 1.04 3/4 E of 1/4 in flowage

= 5325.5' - 00059 = 0° 02' west correction

N & S $\frac{1}{4}$ line 36-36-6 E.

$$5.87 \times .00059 = .00246$$

$$34.06 \times " = .02$$

$$\begin{array}{r} 39.89 \\ - 34.06 \\ \hline 5.83 \\ \times 21 \\ \hline .0012 \\ .02 \\ \hline .021 \checkmark \end{array}$$

$$\begin{array}{r} 39.89 \\ 5.87 \\ \hline 34.02 \\ \times .00021 \\ \hline .0071 \\ .0034 \\ \hline .0106 \checkmark \end{array}$$

Correct all hubs & pickets on this line, driving
Iron Pipes at intervals: all come W. of fence.

The first $\frac{1}{4}$ of mile of fence, S of N $\frac{1}{4}$ seems to
line up exactly with Smith's Center

then it bears more SE
at 34.06 it is fence wire is 4.6' E of line
" " " post 4.3 E.

At corrected station 34.058 turn = N to W to Westbrook
house (SE of house) 141' = 28'
" hrs 1.648 = 108.8' W. of line
meas at point 141' N. of \oplus

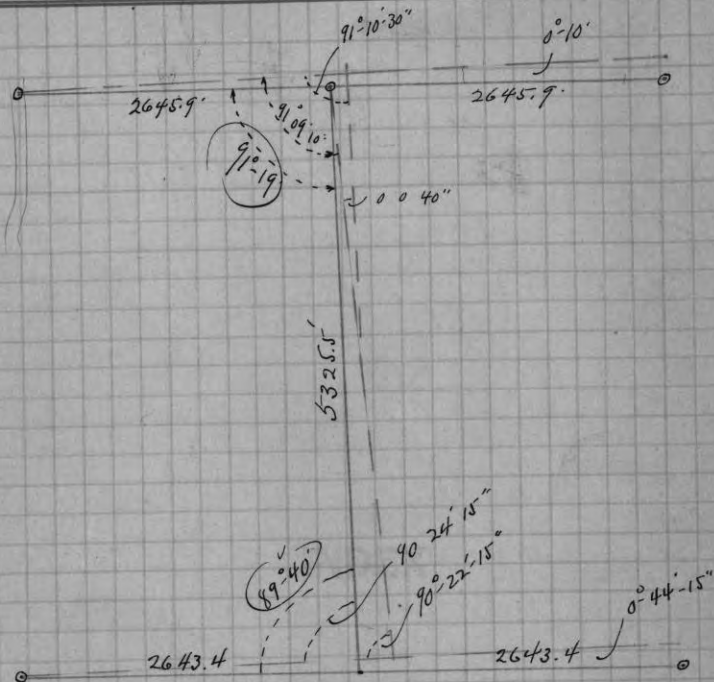
\oplus Lay off a line parallel with RR + 2.515 (166') N $\frac{1}{4}$
from \oplus of track

This N. line legal highway intersects true $\frac{1}{4}$ line
at station 38.284 (2526.7)

Drive $1\frac{1}{2}$ " x 4' Iron Pipe

$$\left\{ \begin{array}{l} \text{fence wire } 6.2' \text{ E.} \\ \text{" post } 5.9' \text{ E.} \end{array} \right.$$

At intersection of random H with true $\frac{1}{4}$ line
turn = W to S $91^{\circ}10\frac{1}{2}'$ (182-21')



INDEX

INDEX

Section	TOWNSHIP		RANGE		CITY or VILLAGE		ADDITION
	N.	S.	E.	W.			
36	36		6				Measurement of N. line
36	36		6				Estab. N + S 1/4 line
6	36		6				Est. NE cor. etc. (re lot 2)

INDEX

INDEX

FOR WHOM SURVEYED	WHEN			Page	age
	Day	Month	Year		
G. B. Westbrook, Bradley	19 th	May	1930	168	
{ " " " " " "		Dec.	1931	169	
A. D. Clements		June	1932	24	