

36-9

79

PAGES 1-28

BLANK

#R29610

by H. C. Hall.

for Eagles Club. by Mr. J. E. Bonnie.

Survey of lot 1 in Blk. 3. First Add'n to Rhineland. also a part of Lot 2 in Blk 3 aforesaid described by metes & bounds as follows: Commencing at a point on the lot line between said Lot 2 and the R.O.W. of the C+NW Ry. 21 feet from Lot 1 in said Blk. 3; thence along said line of said R.O.W. to the line between said lots 1 & 2; thence along said last mentioned line to Anderson Street; thence in a S Ely direction along said Anderson St. of said Lot 2, 21 feet; thence in a S Wly direction to P. O. B.

June 5<sup>th</sup> 1929 Ray H. Hall and one assistant  
 Dig at E. cor. Blk. 3 }  
 W. " " 6 }  
 N " " 7 }  
 W " " 3 } Find no conclusive evidence  
 E. cor. Lot 1 " 3 } of any old stake  
 SW " " 4 " 3 }  
 E " " 2 " 3 }  
 W. " Block 13 }  
 N " Park }

Find auto axle for E. cor. Blk. 13 } 1.05' NW. of C.W.  
 } 1.00 SW of C.W.

Measure N Wly on Sly line Mercer St. from said car axle  
 - 59.2 fence corner on Blk. 14  
 - 1.05 C.W.  
 0.0 car axle  
 60.8 line of hedge etc  
 272.2 " " sheds etc ±  
 - continue on next page

Note - Abbreviations used in these notes

x = corner

C.W. = Cement Walk

⊕ = center line

⊞ = east line etc



299.03 Take  $\frac{1}{4}$  lot 1

- 299.45 rotted piece of wood - resembles CW, forms  
 358.3 N. cor. old 2<sup>nd</sup> sty. fr. - Labor Temple -  
 359.0 old stake hole (found later) 2' below CW.  
 359.9 joint in CW.  
 418.7 about line of SE face Alpine Hotel (on Sx Blk. 2)

$$\begin{array}{r} 360 \text{ rec.} \\ 259.8 \text{ N.} \\ \hline 6) 2.0333 \text{ shot per lot.} \\ \hline -240. \quad .133 \\ \hline 239.87 \\ \hline 239.07 \\ + 59.97 \\ \hline 299.04 \end{array}$$

June 8<sup>th</sup> 1929 (5 AM) HC, Ray & Marshall Hall  
 Run N&Ely line Anderson st. by Wx new stone front 2 sty brick  
 at Swx Blk 2 (Brown st.) and by Sly face 3 sty frame  
 (Alpine Hotel - built 1893) at a point about 12' from Pelham st.  
 (2' offset) (See note page 53)

This line falls

- .11' N. of Sx said 2<sup>nd</sup> sty S.F. brick (at Brown st) <sup>189-2</sup>  
 .14' S. of rear end Alpine Hotel <sup>214-2</sup>  
 45.6 S of cor. Alp. Hotel at Stevens & Pelham <sup>47.6-2</sup>  
 .06 N of joint in CW at Sx Alp. Hotel <sup>174-2</sup>  
 47.98 S. of a cross notch which is 0.9 from outer edge CW. <sup>47.98-2</sup>  
 - Apparently for 8' offset, being  
 8.1'  $\pm$  SE from ~~W~~ Pelham  
 7.7'  $\pm$  E - ~~W~~ Stevens  
 1.08 NE of CW at Wx Blk 4 (Ex Pelham & Anderson)  
 61.2 NEly from both corners old Labor Temple on Lot 1, Blk 3. <sup>59.2+2</sup>

N $\frac{1}{4}$  Line Anderson St. - continued -

- 61.1 NEly from N $\times$  old 2 sty. frame on lot 2 Blk. 3 <sup>59.1+2</sup>  
 60.7 " " Ex <sup>58.7+2</sup> " " " 2 " "  
 .35 Sly from Iron Pipe for lots 2 & 3 Blk 4 (on Anderson) <sup>2.35-2</sup>  
 - Not necessarily for street line. Resident says he  
 drove it where RTH showed him the lot line.  $\downarrow$   
 1.4 N. of CW at Sx Blk 4  
 1.84 N " " Wx " 6  
 61.1 N. of Iron Pipe for  $\frac{1}{4}$  lot 1 Blk. 7 <sup>59.1+2</sup>  
 2.42 N of CW at Ex Blackburn & Anderson  
 2.55 N " " at Oneida St.

Note refers to this pipe  $\downarrow$

I plot this line at scale 50' = 1" horizontal + 2' = 1" vert. - RTH.

Run NWly line of Corso st. by car axle at Ex Blk. 13  
 and by cross match  $\frac{1}{4}$  at sta. 822.5 page 30 (Nx King & Corso)  
 (4' offset)

Line falls

- .6 NW of CW. at Ex Blk. 3  
 .83 SE of what might be old stake at Ex Blk 3 ? <sup>4.83-4</sup>  
 .86 NW of S. end CW (about  $\frac{1}{4}$  Blk. 3)  
 60.00 NWly from N $\times$  stone found'n 1 story fr. at Wx Blk 7 <sup>56+4</sup>  
 .95 NW of CW at N $\frac{1}{4}$  Mercer st.  
 .25 on CW. at S. x Blk 13 <sup>4.25-4</sup>  
 59.08 NW of CW at N. line Anderson (Wx Blk. 6)  
 .44 NW " N " " (Sx " 4)

Plot out this line 50' = 1"  
 2' = 1"

Angle of these two lines as run  
 N $\frac{1}{2}$ E to SE at S $\times$  Blk. 4  
 ① 89°56' ② 179°53'

June 10<sup>th</sup> 1929

H.C. Ray, Keith & Marshall Hall (3 hrs in AM)

Measure N Ely along Ely line Blackburn St.

0.0  $\Phi$  main track  $\Phi$  NW RR

49.34 $\pm$  Stone foundation 1 story frame

202.45 $\pm$  CW at S. side Anderson st.

263.75 over N Anderson as run (page 32)  
 (261.75 + 2)

Measure SWly along NW side Blackburn from old  
 fence line (indefinite) thru  $\Phi$  Blk. 6.

150' NE edge CW at N. side Anderson

Measure NEly along Ely side Cours from  $\Phi$  Main track  $\Phi$  NW

203.3 S. edge CW at south side Anderson

(202.8 = record - comes 0.5 S. of CW.) ①

261.15 Nly edge N. CW. (Rec. 262.8) ① #262.96

263.0 over Nly line Anderson as run (page 32)

411.2 about line of fences & base of cement retaining wall  
 thru Blk. 6 (Top of " is considerably North)

564.2 C.W. at King St.

①  
 - 562.8  
 60. Anderson  
 562.8 Rec.  
 - 503.2 Meas (1' from CW)  
 4  
 503.4 (.08 per 100'  
 surplus.

Measure Ely along  $\Phi$  Ely Pelham st. from joint in C.W.  
 + Ely face old 2 story fr. at E $\times$  " " " Mercer st. (W $\times$  Blk 10)

0.0 joint in C.W.

1.2 N. edge "

59.35 $\pm$  line N face old 2 story fr. + joint in C.W.

287.2 hedge row

361.47 CW } at Newbold st.

419.44 CW }

760.3 angle in Ely edge CW at Pelham & Arbutus  $\leftarrow$

763.5 about line of street fence across street west  
 (lined up 1' from CW. at E side Pelham)

766.1 = record

Measure Nly along Ely line Pelham from said joint in C.W.  
 at sta 0.0 above: ①

210.54  $\Phi$  Nly main track 209.95

277.85 Take W $\times$  Blk. 3 277.84

281.9 W $\times$  old frame Labor Temple

400.92 N $\times$  " " "

402.15 Take  $\Phi$  Anderson st. 402.13

402.2 find old stake hole 2' below surface

402.86 joint in CW & about line of Ely  
 edge of CW east

461.07 CW. at N side Anderson

462.15 over Nly Anderson as run (O.K.) 462.13

512.8 $\pm$  line of sheds etc

611.1 $\pm$  " between eaves "

763.99 S edge CW at S side King

821.63 N " " " "

Property owner on NE $\times$  Pel. + " (an old resident) claims  
 to have built this CW in 1907 exactly where old plank walk  
 was laid & that inside cor. sd. plank walk was within 2' of  
 orig. stake.

944 ± old wooden fence hrs. E.

Rec. 822.8	402.8 assumed rec.
- 120.	402.15
- 702.8 rec.	402.8) .65 (16' per 100' ✓
- 701.63	x 278.3 = .45
702.8) 1.17 about	278.3
.16' per 100'	277.85 ✓

Note - Decide to take line of Anderson st. as run (p. 32)  
 Since it agrees (within .05') of old stake hole at N x Blk 3  
 and with pro-rate on Pelham & on Corso.

The paving job is evidently an attempt to fudge  
 in on the erroneous rec. on file here.

June 11<sup>th</sup> 1929 HC # Ray & Marshall  
 Measure North on E. side Arbutus st.

0.0 car axle set by C.D. Vaughan at orig. loc. of Doris  
 stake for NW x Blk. 4 (S. Park Add'n).

Ed. axle is in line with joint & .86 E. of CW

57.98	N. edge CW on N side Stasca
419.8	N " " " N " Prospect
602.3	hedge
720.7	S. edge " " S " Kemp

1006.5	line between garages
1017.2 ±	" of occupation across street
1066.3	fence
1129.	N end cement combing & line of fence
1130.	joint in CW.
1190.6	find old fence post remains .96 E. of CW + .72 S. of joint
1194 ±	line of CW across street
1253.8	joint & angle in CW. (sta. 760.3 page 35)
1260	= record dist

(C.D. Vaughan says Doris made his errors in width of N.  
 block of Add'n.)

Measure S Ely thru Blk. 12. (following fence line between  
 lots 1+2)

0.0	main track (assume 50' record)	Rec?
47.6	rear of garage	150
202.5	W. edge W. CW Pelham st	60
260.1	about line of Ely face E. CW.	260

Measure NWly on H. Newbold st. from Corso  
 - 1.55 our NWly Corso as run (page 33)

- 1.3	CW.	
0.0	old stake hole of some sort	①
119.3	line of fence etc NE	118.85
242.3	joint in CW & line of sheds, hedge	239.22
360.16	Ely edge E. CW at Pelham	357.60
417.5 ±	Wly " W " " "	419.60
516	line w. face sheds	519.60
620 ±	RR track.	

620.25
1.55
621.80
620
560) 1.80 (.32 per 100)
Surplus.

June 12<sup>th</sup> 1929 (8 to 11 AM) rainy  
 HC Ray & Marshall

Break down CW at N x Blk 3

and dig away filled ground & debris.

Old cedar block found underpinning of bldg.

2' below S.W. (grade) encounter natural surface &  
 find a vertical hole, well defined and 11" deep where a  
 stake has entirely decayed.

.65	SW of joint in CW.
2.82	NW " " "
.89	SE of joint noted in Meas. on Anderson
+ 1.25 ±	NE edge of N x Labor Temple
.6	NWly "

We consider this as good evidence as to the orig. loc.  
 of the corner of Blk. 3.  
 This frame bldg. (Labor Temple) was erected 1888

We do considerable digging for evidence of the intersection of E. lines Pelham + Arbitus, opposite angle in CW but find nothing.  
 Find Davis monument (Stone #3) for  $\frac{1}{8}$  S. on  $\$$  Sec 6  
 a bolder with cross on top, 3' below surface  
 1.7' W. of SW x shed  
 + 70.23' S. of car axle for NE x lot 1 Blk 4  
 S. Park Add<sup>n</sup>.

$\$$  S. Park Add<sup>n</sup> = obstructed by fences etc.

Run traverse via Arbitus.

Find Davis Stone #1 (exposed in open field) is  
 1358.5' from #3

Iron bar, for NE x Blk 1 is 97.3' S. of #1 and 0.12' E  
 of straight line to #3

Axle for NE to Lot 1 Blk 4 is 0.22' W of a straight  
 line between #1 & #3

Fail to find Stone #2 - ties indefinite.

Try measuring N on  $\frac{1}{8}$  S line 60' from iron bar (for NE x Blk 1)  
 - thence W. parallel to H. Blk 1 110.24'

This falls about 2.7' E of line of E. edge of Pelham CW  
 (produced). Set temporary iron bolt 1.02' from CW

All this results in no direct evidence of line of Pelham.

June 14<sup>th</sup> 1929 (4:45 AM) 2 hrs. H.C. Ray Marshall  
 Run  $\$$  Pelham St. by center between curbs at N side King  
 and by 30' Ely of S x 2<sup>dy</sup>. frame (56' ± S. of  $\$$  Mercer st.)

This line falls:  
 { 25.5' E of W edge West CW } opposite angle in CW at N. end  
 { 32.0' W of E " " } Arbitus  
 { 34.6' W of our temporary bolt " " " }

30.0 W. of E. CW at N. side Newbold  
 31.2 W " station 360 on  $\$$  Mercer (page 30)  
 30.6 W of SW x old 2<sup>dy</sup>. frame } NE x Pelham + Mercer  
 30.5 W NW x " " "  
 29.2 E of long 2<sup>dy</sup>. frame (6' ± N of H. Mercer)  
 30.0 W of SW x old Labor Temple } on Lot 1 Blk 3.  
 31.2 W of N x " " "

29.62 W. of joint in CW at N x Labor Temple  
 = 30.52' W of old stake hole at N x " (N x Blk 3)  
 29.3 W. of E. ledge E. CW at N side Anderson  
 29.7 E of E. face Alpine Hotel (at point 12' ± N. of Anderson)  
 29.88 E " " " (at Pelham + Stevens)  
 21.9 E of " found (for 8' of pact?) " "

- Plat out this line 50' ± 1" x 2' ± 1"

Decide to swing this line 2.00' SEly at Sky end to agree  
 with record dist from R.R. (at lots 1 + 2 Blk 12).  
 (This comes at E. edge of E. CW. at Pelham + Arbitus) and to  
 agree with old stake hole at N x Blk 3  
 + to " " record on  $\$$  Mercer (W. from car axle at E x Blk 13)  
 within 0.1'

This line  $\$$  Pelham  
 (as adjusted on the graph) comes:

1.15' E. of CW. at NE x Anderson  
 .68 W of N x Labor Temple (on lot 1 Blk 3)  
 .68 E of W x " " "  
 .90 E of joint in CW. at N x Blk 3  
 .48 E of N x old 2<sup>dy</sup>. frame at NE x Mercer  
 .40 E of W x " " "  
 60.26 E of NE x Alpine hotel  
 60.12 E of " " just N. of window

Measure S. on H. Stevens from Iron Mon. at SE x  
 Federal Property (Post office)

59.75 about line N. face new brick column  
 240. SE x new laty. brick (Oakland - Pontiac)  
 402.6 corner of Alpine Hotel



Meas.	Record
402.6	160
45.6	140
448.2	240
	365
	403
	448

This seems to indicate  
 Alpine Bldg. O.K. for H. Anderson as run  
 " " said to date from 1893



Monday, June 17<sup>th</sup> 1929 (5: 7:40 AM) (7 9 AM - 1 PM)  
 H.C.H. with Ray, Keith & Marshall  
 Run corrected & Pelham on 2' offset + make notches in  
 curb, CW etc.

(With 2°45' E. Var. Anderson st. lvs. N 50°± W.)  
 Measure NWly along N. side " " from our corrected line of Pelham.  
 (60' W. of " E " .)

362.57 SW x 2 nty brick at Brown st.  
 359.75 record as amended by court order yrs ago.  
 2.79 (Orig. rec. was 423.2')

Cross notch 1.89 on CW + .41 S. of joint  
 (on Anderson) is 58.00 NWly from N x Blk 3

Notch in curb 3.11 S. of joint is for line of Anderson

Notch " 1.53 S " "

Notch " .07 S " "

Steel drive shaft at corner

1/2 mrow on Gate house 46.67 from corner

Center of main track 67.4 " "

Drive shaft at S. cor. property 10.47 from E storage track

3/8" Iron Pipe for angle point in Block line 10.47 from  
 E storage track

3/8" Iron rod .81 SW of end of CW. + .9 NWly of line of CW  
 + 50.38 from E main track is for S x Blk 3.

Notch in CW. 1.15' E. of CW. is on line of Pelham

" in curb .1 E of joint " "

" " " .45 W " "

Iron pipe at Block corner (.71 SW of CW)

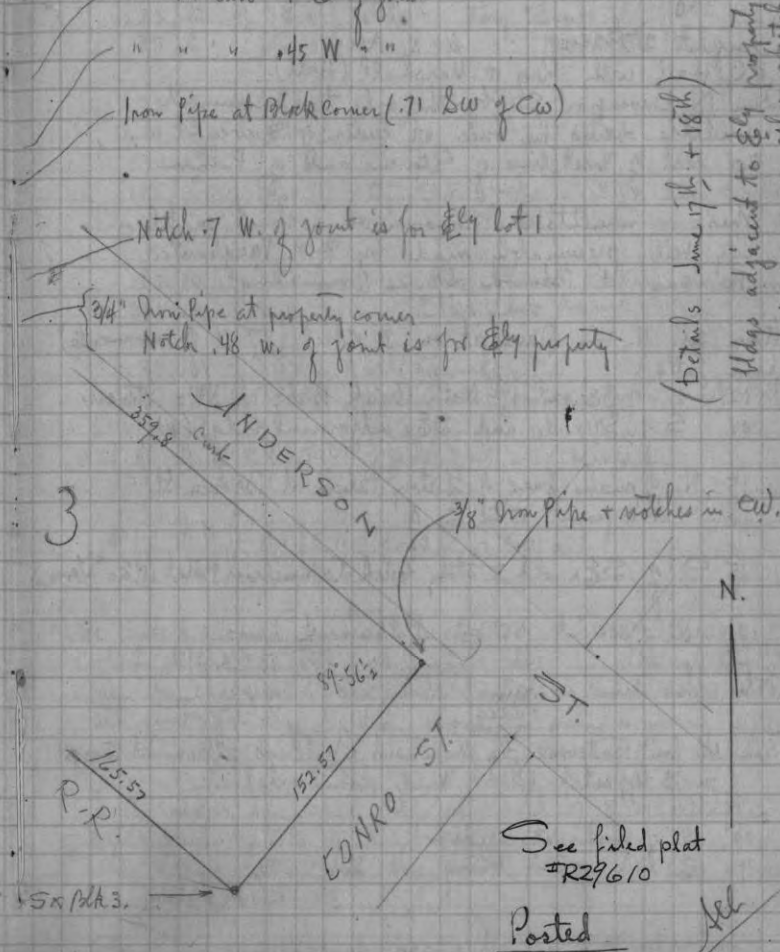
Notch 7 W. of joint is for Ely lot 1

3/4" Iron pipe at property corner  
 Notch .48 W. of joint is for Ely property

3/8" Iron pipe + notches in CW.

(Details June 17<sup>th</sup> + 18<sup>th</sup>)

Wdgs adjacent to Ely property also located  
 Lane down on this notch



See filed plat  
 #R29610

Posted

Feb



Run  $\Phi$  Rives St. by 30' S. of monuments at Brown  
+ at Pelham (on 3.00 offset) = 27.00 from monuments

This line falls

- .75 S. of NE<sup>(2.25)</sup> x step pillar on Cong. church
- .04 N. of Monument #1 at Stevens
- .25 N of NE x } 2 story brick Fire Station
- .30 N of NW x }
- .08 N (of line as defined by) Mon #2 at  $\Phi$  Rives + Stevens
- 1.22 S. of CW. at SW x Pelham
- 1.20 S. " " SE x Stevens
- 3.80 S. of + in CW. near SE x Stevens
- 3.72 S. " + " " " SW x "

Take this line, as run, for N Pelk. 19

Run W. line of Pelham by monuments at Rives + Davenport  
- unable to identify any at Frederick -  
line falls

- 1.53 W. of CW. at NW x Rives
- 1.44 W. " " SW x "
- 0.46 W. " " NW x Davenport

Turn angle S. to W. at NE x Pelk. 19 (4 times) =  $90^{\circ} 12'$   
" W to N " SE x " " 4 " =  $89^{\circ} 48' 30''$   
" E to S. " SW x Rives + Stevens 4 " =  $89^{\circ} 54' 30''$

- Temp.  $80^{\circ}$  to  $85^{\circ}$  -  
Measure N. on  $\Phi$  Pelk. 19 (W. line Pelham St.)

- 0.27 N. edge CW at N. side Davenport.
- 0.0 our N line " ad run
- 69  $\frac{1}{2}$  line of crooked fence at rear

164.96 Take  $\Phi$  our Survey

- 239  $\frac{1}{2}$  about line of fence at rear
- 240  $\frac{1}{2}$  joint in CW.

239.95 Take N our Survey.

- 300. line of fence at rear
- 359.92 our  $\Phi$  Rives as run
- 361.14 S. edge CW at Rives.

6).08 (.0133 short per lot

.0133 x 3 = .04  
180.  
- 179.96  
164.96 ✓

Measure N. on  $\Phi$  Stevens from N Davenport

- 4.49 joint in CW.
- + 0.0 our N Davenport as run
- .12 S. face brick col. on old Commercial Hotel - 2 story
- 119.99 S. " 2 story brick "Daily News"
- 120.03 notch? in CW.

165.00 Take  $\Phi$  Survey.

- 179.73 joint in CW.
- 180.00 leave  $\frac{1}{2}$  arrows (scratch) at rec. dist for  $\Phi$  L.4
- 240.00 Take H Survey
- 240.31 joint in CW.
- 360.02 our H Pelk. 19 as run
- (360.00) on line of meas 3' out on CW.

Note - The meas. on Pelham, being the least obstructed + used  
to calc. dist. on Stevens makes latter 6)359.96 (59.993  
+ .008 for 62° F = 60.00

Sept 1st 1929 6 AM. H.C. Ray & Marshall.  
 Run  $\$$  Stevens St. by 40.00 E. of monument at King St  
 + by  $\odot$  Mon #2 at Rives. This is equivalent to  
 the line noted on page 43 as being practically  
 straight from Frederick to King.

3.00 offset = (40-3) = 37.00 E. of monument at King  
 line falls

60.02 E. of mon. at SE x Post office property  
 .20 E. of SW x } 1 story cement bldg. opposite P.O.  
 .23 E. of NW x }

.24 E. of SW x } 2 story stucco "Res Garage"  
 .08 E. of NW x }

.04 E. of SW x } 2 story plaster front  
 .03 E. of NW x } + joint with 3 story Brick  
 .02 E. of NW x " " "

60.00 E. of mon. at NE x Post Office tract.

.03 E. of SW x } 1 story brick garage "Brick Agency"  
 .07 W. of NW x }

.06 E. of SW x } 2 story Brick ("Business College")  
 .07 W. of NW x }

.04 E. of brick col. on old 2 story Brick at SE x Davpft.  
 (40).09 E. of mon. at  $\$$  Davenport

O.K. with SW x old 2 story Brick Commercial Hotel (Brick col.)  
 .09 E. of NW x " " " " " "

.32 E. of SW x } 2 story Brick "Daily News"  
 .38 E. of NW x }

1.76 E. of a + in CW. near NW x Blk 19 (+3.80 N of  $\$$  Rives)

Angle E. to S. at NW x Blk. 19 (to  $\$$  Stevens as run above)  
 ① 89°58' ② 174°55' ③ 269°53½'

Note- I plat this  $\$$  Stevens - which is a line 60.00 E. of  
 + parallel with the platted line noted on page 43  
 (Being a line thru monuments at King + #2 (at Rives)  
 This agrees well with bldgs. S. of Davenport but  
 does not agree with the two old bldgs. in Blk. 19.

Decide to take each block as a unit + therefore  
 we use the line of Stevens as originally run on page 43  
 for Blk. 19. Altho - this decreases the angle  
 at NW x " " from 89°58' to approx 89°57'  
 This method gives nearer record distance along  
 N. line Block 19. (See following meas.)

Measure E. on  $\$$  Rives from our  $\$$  Stevens as run  
 on page 46

- .59 E. edge of C.W.  
 - .54 line of Stevens St as taken in this survey.  
 0.0 " " " as tried on page 46

149.14 Take  $\$$  Block 19  
 150.± line of eaves etc  
 151.35 joint in C.W.  
 298.82 our W. line Pelham as run.

298.82  
 + 1.54  
 2) 299.36  
 149.68  
 149.68  
 - 1.54  
 sta 149.14  
 151.35  
 2.21  
 (W. of joint)

Measure W. on N. line Davenport

- .46 CW.  
 0.0 our W. Pelham  
 149 ± line of eaves N.  
150.03 Take  $\$$  Block 19  
 150.2± line of W. face (1909 2 story Bk. S. of Dav.)  
 299.96 W. face brk. col. at Stevens (bottom)  
 299.95  $\$$  Stevens as run (page 46)  
 + .12 adjustment  $\$$  Stevens  
300.07

2) 300.07  
 150.035

Sept 5<sup>th</sup> 1929 H.C. Ray & Marshall  $\frac{1}{2}$  day.  
 Run  $\Phi$  Block 19 (N+S) on 15' offset W. (on account  
 of fences, electric line, shrubbery etc.)

Run  $\Phi$  Lot 4 - thru block on 6.00' offset N.  
 Comes exactly 10.00 S. of N. face 2 story Bk.  
 Telephone exchange on W. side Stevens (4.00 + 6.00 = 10)

Drive  $1\frac{3}{4}$ " x 30" trailer flues for rear corners of property  
 and for front corners.  
 { NW x = round iron rod .0506" of CW.  
 { SW x = Square iron rod

- Set no markers for  $\Phi$  Lot 4 -

We get Ed. Bonnie, plumber, to show us the  
 location of gas, water etc. Difficult to locate exactly  
 on account of debris in ruined basement.

The electric line follows rear line of property closely.  
 Sidewalk on Stevens in bad condition

Grades - Mr. Wardwell, City Manager, informs us that  
 there are no official grades for Rhinelander.  
 At present we can just give comparative elevations.

From information gained by Wardwell the W.S. B.M. on  
 Post Office is 1554.380  
 Same on Court House is 1561.398  
 Hydrants (top)  
 King & Stevens Pelham (15) 53.64  
 Davenport & " (15) 53.64

Sept. 3<sup>rd</sup> 1929 H.C. Ray & Marshall

We run levels (with transit) from hydrant at Davenport  
 + Pelham to P.O. via Rives St. & close within .07  
 (Top of hydrants loose.)

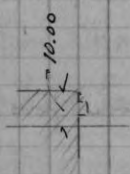
51.8 curb at NW x Davenport + Pelham  
 51.9 CW at SE x Blk 19  
 55.6 CW NE " "  
 55.5 curb at NE x " "  
 52.8 " " NW x " "  
 53.0 CW " NW x " "  
 44.9 bottom of sewer at MH (Rives + Stevens) flows S.  
 52.35 CW. at  $\Phi$  Lot 4  
 52.15 curb " " " "  
 50.85 CW at SW x Blk 19  
 50.63 curb " " " "  
 40.3 bottom of sewer at MH (Davenport + Stevens)  
 53.2 Natural Surface of ground at NE x Lot 4  
 52.0 " " SE x " "  
 51.75 curb at  $\Phi$  Lot 4  
 50.6 gas tap  
 45.6 $\pm$  water intake  
 44.75 $\pm$  chain of old catch basin 20' E + 30' N of SW x property  
 44.9 " " " " 70' E + 30' " " "

Water shut-off is in CW. 40.6' S + 4.75' W of NW x property

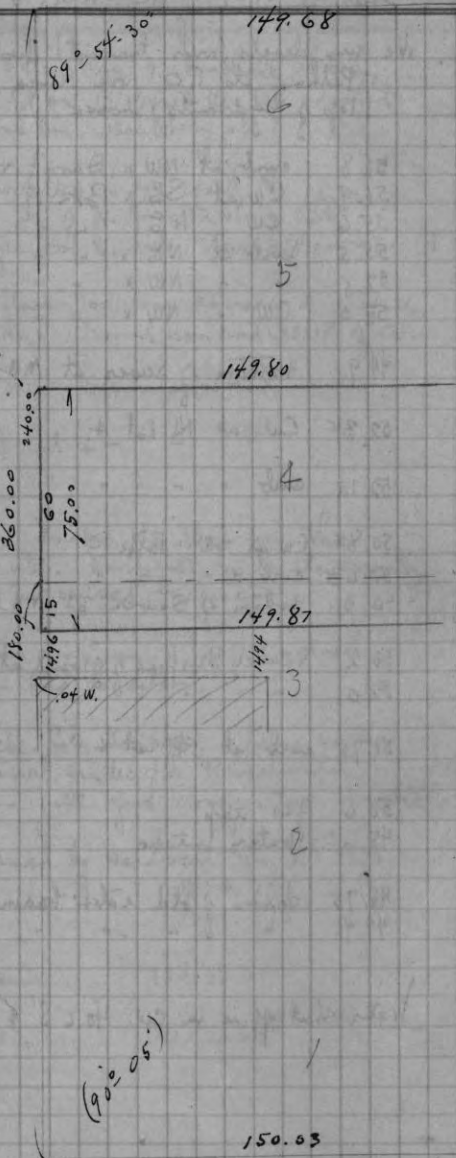
ST.

STEVENS

60



Center 98  
Center 99



Davenport

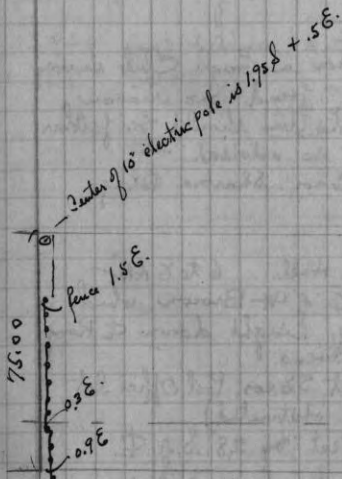
300.07

ST.

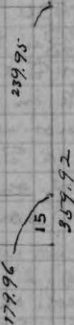
$89^{\circ}48'30''$

See Plat on file

Posted



$90^{\circ}12'$



ST.

PELHAM

R30370 Check up street lines at NE corner of Brown & Anderson to determine possibility of adding new facing to Sharka Hdw. bldg. on part of Lot 2 Blk 2 First Add<sup>n</sup> to Rhinlander. for M. A. Sharka

Note — We had run N Anderson in Eagle Club survey (page 32) by SW cor. this bldg + found no reason to support the theory that the line should be farther S at Brown St. — Client so advised — Said line cut in .11 ft on SE cor. Sharka Bldg.

March 22nd 1930 +20° F.  
H.C. Hall with Ray & Marshall Hall. 6 to 8 AM  
At monument for  $\Phi$  King + 20' E. of W Brown, which is a punch mark in water plug, sight down  $\Phi$  King to similar monument at Stevens.  
Line falls 30.00 S. of iron at SE cor. Post Office lot (View on Brown on 20 ft. line obstructed)  
Run  $\Phi$  King st on 2.00 offset by 28' S of  $\Phi$  King  
Line falls

- .31 S. of Bk. col. on old frame at SW x Stevens
- .02 S of NE x Pattinson (brick) laundry
- .10 S by center " "
- .24 S. by NW x " "
- .19 S. of NE x old 2 sty. Bk. (Chrysler sales)
- .51 S. by NW x " "
- OK with S NE x new Montgomery Ward bldg.
- .03 N of NW x " " " "

Run  $\Phi$  Brown St. by 60.00 E. of monuments at Rives + at King. (offset 2.00 W)

The monument at Deavenport has apparently been removed. There is a small round brass marker at  $\Phi$  King +  $\Phi$  Brown We find this 60.00 E of monument + OK for  $\Phi$  King.  
 $\Phi$  Brown as run, falls S.

- .02 W. of NW x Montgomery Ward Bldg } on lot 1 + part of 2
- .03 E of SW x " " " }

.46 W. of NW x 2 story Bk. (Sharka Bldg.)  
.33 W. of SW x " " " "

Meas. S. along W. line Blk 2 from  $\Phi$  King as run.  
— nearest tenth only

84.9 joint between Montgomery Wd + Sharka Bldgs.  
135. SW x

(Orig. record in Merrill = 138.7  
Court partition = 135.)

60  
25  
85

84.9  
- .03  
84.87  
- 25.  
59.87  
- 60  
60 ) .13 ( .00217  
x 135  
-----  
.29  
- 134.67  
134.68  
+ .03  
Sta. 134.71 ✓

Line of Bldg. produced NW by to line run calculates .29 N.  
(by Doris' angle.)

Turn angle  $\Phi$  Brown with  $\Phi$  King N to E (1 turn) 89° 30'

Note - Doris' B. 4 Page 170 gives very close to 135' for W. line Blk 2. His meas. was in  $\Phi$  Brown + his angle with N Anderson was 48° 05' (no date)

Note - Proceedings now under way to vacate N. 5 inches Anderson to allow new brick facing on Sharka Bldg.

Posted in County Record.

#R30372

Survey of north 90' of Lot 1. Blk 3  
of S.D. Sutcliffe's Addn to Rhineland  
Except the west 10' of said lot 1.

for J. Earl Kettner - City

March 25<sup>th</sup> + 31<sup>st</sup> + April 4<sup>th</sup> Spent some time  
looking for stakes + irons - Too much frost in ground.

April 5<sup>th</sup> 1930 PM 6:00  
H.C. Hall with Ray, Keith + Marshall  
Turn angle at Iron Pipe found at SE x Blk. 3  
(Square iron bolt defines NE x " "  
Shore front + old stake hole at SE x " 4 define E)

① 129-28' ② 258-56' (Rec. = 129°30')

Measure SWly along E Blk. 3 from square bolt at NE x.

116.46 drive square headed iron bolt for SE x

*this property*

117.00 stake + iron found - OK for line

181.00 Iron Pipe found " " "

(for 4<sup>th</sup> alley)

196.8 Iron bar found for E alley .3' W of "

377.75 Iron pipe " at SE x Blk. 3

Dig at NW x Blk. 3. Find no iron but two old stakes.

Meas. N. from old stake found at NW x lot 12 Blk. 3

12. find nothing

151.75 first stake at NW x Blk. 3

151.88 2<sup>nd</sup> " " " "

Drive Iron Pipe for cor. at stake #2

This checks 50' with W Reik St. ←

Angle at NE x Blk. 3. 50°-36'  
" " NW x " " 90°-04'  
" " SW x lot 11 89°-57' ±

Measure West on N Blk. 3 from bolt at NE x

105.4 drive iron bolt for Kettner's NW corner  
115.4 " " axle " NW cor. lot 1

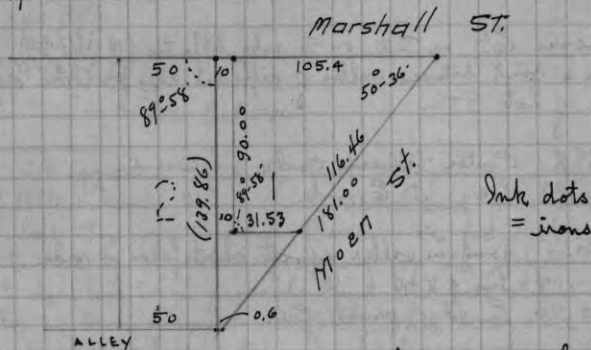
605.4 NW cor. Blk 3 as described (page 54) (= Rec.)

Measure E. along N. line alley in Blk. 3

0.0 a point 12' N. of stake found + on line of stakes

440.5 Iron Pipe found  
490.6 " " " (at Moen St.)

Check this meas. by angles W to S. of H at NW x lot 2:  
90° falls .42' W. of pipe  
89°56' " .6 " " "



Ink dots  
= irons

Note - Whoever worked here  
before created S. end lot 1  
as a point and meas. even  
50's W. from Moen St.

Posted in  
County Record.

We claim even 50's from W.  
end and a space of .6'  
on S. end lot. Rec. plat  
shows a space but no figure.



R30373

Survey to determine W. line Lot 1 Blk. 25  
in 2nd addy to Rbl. near enough for  
planting a hedge etc. for Dr. R.P. Kirsch

April 14<sup>th</sup> 1930 H.C. Hall with Ray Keith + Marshall  
Run W Baird by 30' W. of Center between curbs at N Clark  
+ at N Lincoln - Offset E. 6'

line falls:

- .35' W. of cement garage found in at E alley Blk 24
- .61' W. " " wall 33' ± S of " "
- .26' W. of rough stone retaining wall just N. of Atlantic
- .43' W. of perpendicular " " about 80' N. of alley Blk 25
- .67' W. of SE cor. garage on lot 1 Blk. 25
- .36' W. of n. end curb for E Lot 12 Blk 25

Note - There seems to be nothing definite nor uniform in this  
occupation along Baird. Kirsch's wall is not perpendicular  
+ extends into " farther than any here noted.

Measure Ely on C.W. on S. side Atlantic (N Blk 25)  
from a joint between walks of different ages + widths opposite  
line of lots 5+6.

- 89.8 Center between curbs on Outside
- 60.98 C.W. at E. side " 59.8

0.0 joint in walks opposite short fence in rear  
.04 line of 5+6  
60.26 E. edge private C.W. 59.88

180.84 joint + jog in " 179.55

238.96 " in C.W.  
y 239.38 Take W Lot 1 239.38

240. record  
299.23 our W Baird as run. 299.23

x 299.23  
59.8  
6) 359.03 / 59.858 per lot  
- 59.8  
- .04 E at 5+6

Meas. E. on 44 Alley. Blk 25 from old fence 5+6  
- 60.6 C.W. outside  
- 89.5 E curbs "

0.0 old fence x  
.4 line of 5+6  
60.1 about line of caves E. side of barn 60.29

119.8 line E. face old fr. barn S. of alley 120.19

182.5 old fence cor. 180.08

y 239.98 Take W lot 1 239.98

240. record.

299.88 our W Baird as run. 299.88.

x 299.88  
59.5  
6) 359.38 / 59.896  
- 59.5  
- .396 E at 5+6

It appears that the first occupation (in W. end  
of Blk.) took more than record and this threw  
E. lots too far toward Baird. We did not go  
into this to the extent of digging for old stakes etc.  
It does not seem probable that the orig. stakes on  
Blk. 25 were as much E. of the other occupation as  
the retaining wall on lot 1 indicates.

Set stakes with transit between y + z

Posted in County Record.

6-36-9

for Mr. Gardner - contractor for Memorial Bldg.  
(See pages 42-50)

Checks line on Stevens St. + give levels for  
Caissons.

May 5<sup>th</sup> 1930 80° H.C.H. Ray, Marshall  
Checks  $\Phi$  Stevens by .05 E. of C.W. at SE x Rives.  
and by .04 E. of NW x Daily News brick  
(direct sight).

Line falls a trifle E. of  $\Phi$  our bolt at NW x property.  
+ " " W "  $\Phi$  " " SW x " "

Give marks on forms.

Set stake near NW x lot 4 with top 6" above C.W.  
at point opposite corner.

Transit on S. side site.

Rod Reading 2.94 on sd. 6" stake. Drive stake  
near each corner of site to same rod reading.

Set up north of " + checks (R.R. 4.55) all around."

May 10<sup>th</sup> 1930 H.C. Ray, Keith.

Levels for Caissons

Set 15 pier stakes to grade 6.92' below top  
of said 6" stakes.

Posted in County Record.

152.22  
152.22  
152.22

6-36-9

Survey of Lot 2 Blk 7 in Keenan's Add<sup>n</sup>  
(Particularly the north line of said lot 2)

June 23<sup>rd</sup> 1930 Ray, Keith + Marshall.  
At SW x Kemp + Margaret turn  $\leftarrow$  of Cement Walks  
S to W 92° 45'

Mess E. from Iron bolt at NW x this Subd<sup>n</sup>.  
(The same iron which we found to be 97.5' S. of Davis  
Stone #1 + .12' E. of  $\frac{1}{8}$  line - page 38)

149.80 on iron pipes found.

150. Records

150.22 iron " "

150.32 W. edge C.W.

Since we found iron bar to be .12' E. we try

149.88

+ 2. offset

151.88

+ set temp point <sup>.34 N. of joint</sup> on line of iron pipes  
and iron bar. This agrees with  
fences etc. in sight to E.

Mess E. from car axle found (for NW x Blk. 5)  
(We found this 70.23' N. of Davis Stone #3  
+ .22' W. of  $\frac{1}{8}$  line Page 38)

150.61 W. edge of C.W.

150.22

+ 2. offset

152.22

Temp mark on C.W. .39' N. of joint.  
There is nothing in sight for line of  
Stasca.

Sight thru Margaret + turn  $\leftarrow$  at both temp. points.

At Park  $\leftarrow$  S to W to iron = 92° 06'

" Stasca N - W - axle 87° 20'

Note - Record plate of Keenan's  $\frac{1}{8}$  + 2<sup>nd</sup> Add<sup>n</sup> +  
Bl. Davis Add<sup>n</sup> were all made by B.F. Dove.  
No set angles given on Keenan's, but  
on Bl. Davis (date 1905)  $\leftarrow$  N to E at SW x each  
block is given as 92° 55'.

Blk. 7 Keenan's Add<sup>y</sup> Rhineland - continued

On our line 2' E 4th Margaret + parallel to 4th this 40  
 Make temp mark opposite fence suspected to be  
 line between lots 1 + 2 Blk 7.

● .28 J. of joint  
 1.41 E of post  
 1.34 E of W. edge Cw.

2<sup>d</sup> line at Kemp falls 1.39 E. of joint.

June 28<sup>th</sup> 1930 70°

Ray, Keith + Marshall

Measure S along side 2<sup>d</sup> line (3/4 hour) (152' E. of + parallel with 1/8 in

0.0 line of iron pipes + iron bolt

.84 joint in Cw.

2.08 Take # Blk 8

2.22 Park st (taken to point 114' S of 1/8 cor.)

313.15 joint + line of leaves

362. line of fence

412.44 joint

414.1 line of Cw to E (no Cw west)

471. " " E

472.12 joint " at NE cor (approx) Blk 7

+ line " to W.

✓ 472.70 Take # Kemp st.

522.18 joint

522.76 Take # lot 2

527.19 " 4 line S face Dufrain's fence

572.70 " " of hedge

572.81 Take # lot 2.

SEC 16 36-9 April 9. 1922

NE corner found my B.T. of Feb  
 17 1902 Run south 15° E  
 1994 full 5 E of my 1/8 Post  
 20 years ago  
 NE corner Run E as 4° E about  
 1400 to Lake did not chain it

Keenan's Add<sup>y</sup> continued

Meas. S on Margaret St. (continued)

622.82 joint + line of fence

722.60 " " " "

774.80 " + " of Cw (E of)

828.1 ± line N. face brick shop just W. of subdiv line

928.35 joint + apparent property line

1081.5 about line of short fence in rear

1132.86 joint + Cw west

1134.7 line of " East

1192.52 our temp. angle point near S Intasca st.  
 + approx line of Ew in Subdiv E.

1264 approx line of garages etc to E. ?

✓  
 53.43 PR  
 1132.86  
 .57

April 10<sup>th</sup> 1931 Ray + Keith 1 1/2 hrs.  
 Run  $\$$  Stasca st. by record dist. N of Doris stone  
 for SEx Sec 6 (11.65' or 11.55' W. of ~~40~~ Oneida.)  
 and by record dist. N. of Doris stone #3  
 (on  $\$$ 's on  $\$$  Sec 6)  
 (Offset 5' N. of rec. to clear shrubbery etc.)

line of street falls.  
 { 1.07' S. of our temp. point on Margaret (ata 1192.52)  
 .68' S. of joint at 1.61 on C.W.  
 6.71' S. of N. end C.W.  
 60.72' S. by C.W. west

$\therefore$  @ 1193.58 on our meas. intersect  $\$$  Stasca taken  
 record dist. N. of  $\$$  Sec.

Turn  $\leftarrow$  N to E from our  $\#$  Margaret to  $\$$  " " par. Section.  
 ① 92° 55' W ② 185° 49' (72° 54' E)

Since we found 1358.5' between Monuments #1 + #3  
 - 97.3  
 + 1261.2 extra rec. on  $\#$  Margaret  
 - 1261.3 " between Stasca &  $\$$  Sec  
 - 69.8 " by trav.  
 - 1191.5 Rec. from  $\$$  Park to  $\$$  "  
 - 1190.1 " 1.4 surp.  
 1261.3  
 .00111 per'

= 50.055 per 50 lot  
 = 60.067 " street  
 = 260.39 " intlot-B.8

1191.5 Assumed rec. by trav.  
 - 1193.58 meas. from S.P. found for NEx Balck 8  
 2.08 S. of ata 0.0 on meas.

Photo-note from 0.0 (col. 1)

Record Photo-note

310.1	310.45	312.53
360.1	360.50	362.58
410.1	410.56	412.64
470.1	470.62	472.70
520.1	520.68	522.76
570.1	570.73	572.81
620.1	620.79	622.87
720.1	720.90	722.98
770.1	770.95	773.03
830.1	831.02	833.1
930.1	931.13	933.21
1080.1	1081.30	1083.38
1130.1	1131.35	1133.43
1190.1	1191.42	1193.50
1259.9	1261.3	1263.38

joint  $\$$  Park St.  
 joint + line of acres  
 " " fence  
 " " " of C.W. E.W.  
 " " " C.W. (east)  
 " " " rear. west  
 " " " + line S. face fence  
 " " " "  $\$$  hedge  
 " " " + fence  
 " " " + line old fence  
 " " " + line of C.W. E.W.  
 " " " " N face truck  
 " " " + fence (near)  
 " " " + C.W. west  
 " " " line C.W. E.  
 " " " Our temp angle point  
 " " "  $\$$  Stasca st.  
 " " " line of chads etc.  $\pm$

As Measured	Photo point 2.08 S.
0.0	-
.84	2.08
2.08	1.24
313.15	0.0
362.	311.07
412.44	359.9
414.1	410.36
471.	412.
472.12	468.9
522.18	470.04
527.19	520.1
572.70	525.11
622.82	570.62
722.60	620.74
774.80	720.52
828.1 $\pm$	772.72
928.35	826 $\pm$
1081.5	926.27
1132.86	1079.4
1134.7	1130.78
1192.52	1132.6
* 1193.58	1190.44
1264	1191.5
	1262

April 11<sup>th</sup> 1931  
Ray, Keith + Marshall 1 to 4 PM

Find B.F. Davis cast iron monument 5x6" with hole on top 7" below surface in hard path between tracks. This marks the  $\frac{5}{8}$  on  $\frac{1}{2}$  Sec 6-36-9 as described in Davis Notes. Book 2. Page 34

This iron is  
4.05  
+ 2.37  
6.42 NE of  $\frac{1}{2}$  Main track C+NW  
60.65' N of W. edge Cement Walk on Onida ave. + in line with joint.

This monument was set by Davis in 1905 when he laid out B.L. Horis Addy see Recorded Plats Vol 2 Page 22-23 in certificate " " Davis claims this now to be 114 feet N. of  $\frac{1}{2}$  Parks St.

Note - It may be observed from the records that Davis gives from 1 to A more than 410' to the Blocks of Keenan's Addy between Parks + Kemp sts. while in Keenan's 2<sup>nd</sup> Addy + Horis Addy he indicates an even 410 feet. Did the line of Parks St. change in the interval between his survey of Keenan's Addy 1891 and Keenan's 2<sup>nd</sup> Addy 1892?

I have pro-rated Margaret St divisions from a point slightly North (114) of straight  $\frac{1}{2}$  Parks. as it is indicated on record plat that the  $\frac{1}{2}$  of Keenan's Addy diverges from  $\frac{1}{2}$  Sec. as we go E.

Rec. divergence = A in 510' = .P. in 152'

The occupation along  $\frac{1}{2}$  Parks is altogether too far N. as is apparent in the following line run.

Meas. S. (parallel to Onida C.W.) from  $\frac{1}{8}$  Mon found described above.  
60  
+ 50  
110 Take point on 4' offset N. of  $\frac{1}{2}$  Parks St.

Run  $\frac{1}{2}$  Parks St. by iron bolt at NW x Blk. 8 Keenan's Addy + by 114' S of  $\frac{5}{8}$  on  $\frac{1}{2}$  (4' offset N.) line falls.

4 + 1.52  
5.52 S. of top of cement retaining wall around lawn at SW x Ross + Parks sts.  
.79 S. of CW at SE x Keenan + "  
1.4 S. of board fence at SE x Margaret. (new)  
2.22 S. of our Sta 0.0 on "  
1.37 S. of joint.

(New cement walk now occupies area with  $\frac{1}{2}$  joint - Re-locate our station 0.0 by .84 N. of joint + by 1.56 on C.W. Check by re-meas. S  
313.22 joint noted as 313.15 last year  
412.52 " " 412.44 " "

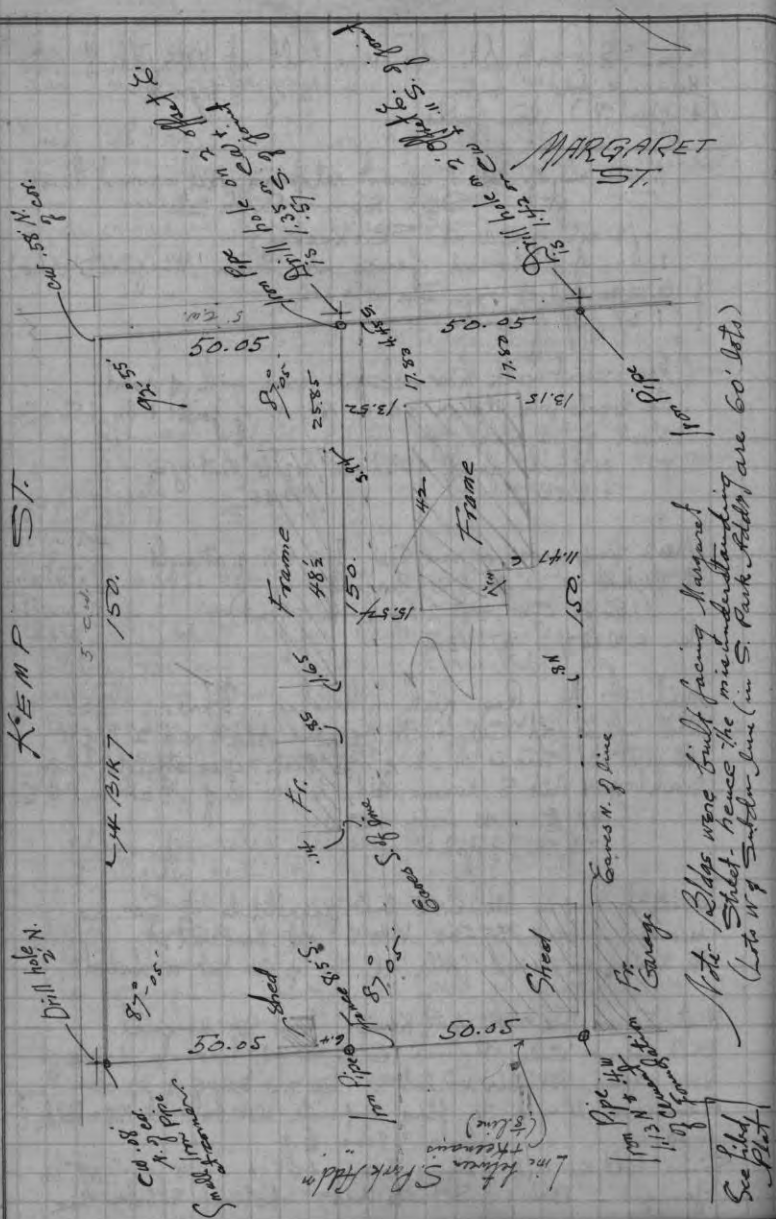
Mark temp cross on new C.W. for 4' N. of straight  $\frac{1}{2}$  Parks St. + 2' E of Margaret (1.56 on C.W. + 2.64 north of joint)  
turn  $\angle$  W to N  $87^{\circ}05\frac{1}{4}$

412.52
- .44
412.08
.00019
x 313.22
+ 313.05
313.214

April 13<sup>th</sup> '31 Ray, Keith + Marshall 4 hrs. 55°  
Drill hole in (old) C.W. for  $\frac{1}{4}$  Keenan's Addy and 2' E of Margaret St. This is .14' N. of  $\frac{1}{2}$  Parks taken straight from South at NW x Blk 8 (Keenan's Addy) to 114' S of  $\frac{1}{8}$  cut on  $\frac{1}{2}$  C.  
{ 1.57 E. of W. edge C.W.  
1.23 S. of joint.

Decide to run in all E+W lines parallel to  $\frac{1}{2}$  Sec. as recorded - by  $\angle$   $87^{\circ}05'$  N to W of Margaret St.  $\frac{1}{2}$  Kemp, as turned, falls .08' S. of C.W. at  $\frac{1}{4}$  subd $\frac{1}{2}$ .

West, 150' on line 2' N. of  $\frac{1}{2}$  Kemp from  $\frac{1}{4}$  Margaret. Drill hole in C.W. thence E to  $\frac{1}{2}$   $87^{\circ}05'$  & drive iron pipes for rear x lot 2 @ 2 + 50.05 + 50.05 Reverse + turn  $\angle$  to flag opposite iron bolt at NW x Blk 8 1<sup>st</sup> 00' ( " 8.00 E of " )  
Since bolt is .12 E of line 8.12 in 108' = .01735 =  $0^{\circ}59'40''$  (Gauges on Blk 1 S. Parks Addy obstruct Subd $\frac{1}{2}$  line)



Line between lots 2 + 3 in Block 20  
of 2nd Addn to Rhinelanders.  
(for a fence).

July 7<sup>th</sup> 1931 for H.C. Hall + Ray H.

Meas. W. along curb (on or along) 4<sup>th</sup> Block 20  
There is no C.W. here.

- 30.00  $\pm$  between Baird St. Curbs  
- 1.3 edge of " " C.W.  
0.0 Take  $\pm$  Blk. 20  
60.1 about line of garage & fence on lot 1  
(leaves " " project 1' W  $\pm$ )

$\rightarrow$  120.16 Take  $\pm$  Lot 3  
This is .5' E of near face curb turn-in  
+ 2.77' E of joint "

179.8	joint in curb	180.24	$\frac{1360.5}{60.08}$
239.7	line of fence	240.32	
360.5	$\pm$ Onida Av. (by 30' E of $\pm$ bet. curbs)		
361.54	Cement Walk		120.16

Meas. W. along  $\pm$  Blk. 20 on N. edge C.W.

- 30.00  $\pm$  between curbs on Baird  
- 1.52 C.W. " "

0.0 Take  $\pm$  Blk 20  
60.8 about line of fence (in rear)

$\rightarrow$  120.10 joint in C.W.  $\frac{120.10}{120.10}$

179.7 peg found opp. joint + line low ret. wall  $\frac{180.15}{180.15}$   
239.5 line of old fence N.  $\frac{240.30}{240.30}$   
240.0 joint in C.W.  
360.3  $\pm$  Onida (by 30' E of  $\pm$  bet. curbs)  
360.38 joint in C.W.  
361.44 edge of C.W. North

$\frac{1360.3}{60.05}$
120.10



70 Meas. (continued) along E. side Keenan St.

179.19 joint  
180.00 leave  $\frac{1}{2}$  arrow at record.

240.00 " " " " " "

241.94 joint  
361.18 N. end of CW at  $\$$  Prospect

375.9 Curb at S. side "  
390.7  $\$$  between curbs "  
405.6 Curb N. side "  
419.34 CW " " "

479.7  $\pm$  line of fence E.  
540.09 joint in CW + line of hedge

660.59 " " " + fence (crossed)  
721.68 CW S. side Kemp  
735.85 curb " " "

750.75  $\$$  " " "

765.65 curb N. " "  
780.8  $\pm$  line S. face 2<sup>nd</sup> frame W.  
779.5  $\pm$  CW E.  
898.58 joint opposite gap in sheds etc.  
961.1 " " " "

959.45 D.P. found  $\frac{.52}{.75}$  E of CW  
899.5  $\pm$  " "  $\frac{.13}{.13}$  E .1 "

1021.0 joint opp. fence + eaves  
1078.38 " " " "  
1078.7 line " "  
1138.86 joint in CW  
1139.8 line of sheds etc

1191.12 Cur  $\$$  Park st as run  
by Davis marks

1191.91 CW at S. side Park St.

1191.25 square stake found.

$\therefore$  1191.12  
+ 69.80  
1260.92 Total meas.  
1259.8 Rec.

1259.8 ) 1.12 surp.  
          .000889 surp per

= .0444 per 50'  
= .05334 " 60'





2.6 Acres on W. extremity of point at confluence of Pelican + Wis. rivers + comprising part of Govt Lot 6 in Sec 6 & of Lot 2 in Sec. 7

To be leased by City of Rhinelanders to Wis. Conservation Dept.

May 5<sup>th</sup> 1934 Fair. Hst. windy.

PM R.H. Hall with Foley + Beller of CCC <sup>#</sup> 652

Ran NE line of tract agreed upon & find it bts N. 43°-01' W + meas. 430' between Monuments placed as near river bank as practicable.

Set concrete Monument <sup>①</sup> at arbitrarily located point, being N 22°-22' W 34.5' from Cross on ledge heretofore described. From

Said concrete mon:

True  
Var 2' 5" W. Pine 10' (not marked) bts S. 83°-20' E 14.8'  
SW corner near Ranger sta. S 45° E 66.3'

→ PM R.H. Hall. Keith Hall & S.B. McCoy.

Thence S 88°-26' E 188. on + along the bank of Wisconsin river to Monument marking NE<sup>ly</sup> boundary of the tract.

{ NE cor. Garage footing S 36 1/2° W 24.3'

Thence S 43°-01' E on Ely boundary. 430.

@ 33.2 Spike for transit sta. in view of Mon <sup>①</sup> + 212.63' dist.

@ 36.6 Intersect due E-W parallel from Cross on ledge 199.8' dist (calc.)

<sup>100</sup>  
99.55 peg on line.

132 ± E Harry #63

144.1 Intersect our our transit parallel run last winter at point 273.1 E + 78.6 S of cross.

SE to W 133°-01' 266.03'  
- 90  
= S 43°-01' E.

245 E Sld grade - bts SW to bridge

430. Set Monument <sup>②</sup> in soft soil + pack brick + stones around it.  
Our spike 30' N. of Pel. river bts  
N 78°-53' E 32.4.  
Birch 7.5 78 25 E 30.25  
" 7 N 60°-05' W 25.55

Area enclosed calculates 2.60 Acres.

PAGES 78-84  
BLANK

SEC 21-36-9 April 24-1920<sup>85</sup>

Began at center of Section which is  
at a Point where The E & W & N & S roads  
Cross and the intersection of 1/4 lines

Run N 1/4 at 13° 45' East

4121 full 1/4 E of Darrs 1/4 P. The Birch  
is down, the pine has been cut but  
stump is ok

Set 1/8 P. N of center { ashen 10 N 10 1/2 W 26 3/4  
8 N 7 1/2 E —

N 1/8 P on E Line which I set in 1907 ok  
Run west var 4° E.

4065 full 1/2 N of 1/8 P. connected Line E to 1/8 P  
NE Cor - found Darrs post and bearing trees  
both stump now. Run west var 3° East

4053 full 54 1/2 N of Darrs 1/4 Post ok

Set E 1/8 P. on N Line { Tam 10 N 35 W 66  
.. 7 N 80 W 74 1/2

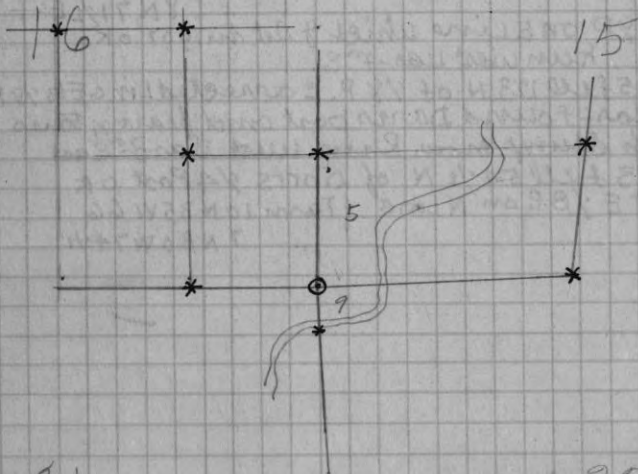
Secs. 15-16-21-22

March 14<sup>th</sup> 17<sup>th</sup> 29<sup>th</sup> 1930

Identified corners as indicated after platting  
 + calculating distances + variations per B.H.V. + 1800.

o B.F. Barr.

\* B.H. Vaughan



21

22

PAGES 87-92

BLANK

SEC. 23 - 36 - 9 APRIL 30, 1924<sup>93</sup>

N.W. Cor. found org. cor. identified from bearings made by myself several years ago.

As these bearings were about to be destroyed I made NEW bearings

Iron Mon's.

{ N. 67° E. 145 1/2

{ S.W. Cor. of School House bears

{ N. 45 1/2° E. 203

Ran E. 2186 found bearings for 1/8 P. which I set several years ago.

Placed iron mon's. ONE 50 LKS. S.

and one 50 LKS. N. of 1/8 P.

AT 43.92 found 1/4 P. and placed iron mon's. same as at 1/8 P.

AT 64.38 found E. 1/8 P. on N. line.

Placed iron mon's. same as at 1/4 P.

AT 87.85 found my bearings for N.E. cor. and made new bearings

{ Y.PINE 6 N. 37 1/2° W. 98

{ Remark my org. B.T.

Ran S. from N.E. cor. Var. 3 1/2 E.  
N.E. Cor. P. { Y.PINE 8 S. 35° W. 50 1/4

NE Cor. NEW PINE 19 N. 61° W. 131

Placed iron mon same as at 1/8 P.

SEC. 23 Cont. May 3, 1929

South from N.W. Cor.  $2^{\circ}$  E.  
 20.61 fell 29 E. of  $\frac{1}{8}$  Post. Found my  
 B.T.'s and posts and drove an iron  
 mon. 41.22 on connected line found  
 my org.  $\frac{1}{4}$  P.

South from W.  $\frac{1}{4}$  P. on connected  
 line 40.74 fell  $80\frac{1}{4}$  E. of S.W. Cor.  
 Found my Post which I set in 1910  
 from org. B.T.s Took bearings made by Mansel

{ Tam 7 N.  $58\frac{1}{2}$  W 52

{ Pine 10 S.  $39\frac{1}{2}$  E. 75

Went N. and at 20.32 found my  $\frac{1}{8}$  P.  
 set in 1910

{ Tam. 12 N.  $74\frac{1}{2}$  E.  $66\frac{1}{4}$

{ S. Var.  $3\frac{1}{2}$  E.

PAGES 95-136

BLANK

Sec-34-36-9 JUN 4 1919

NECOR see page 141 This book. NW cor of 35

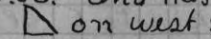
Run West Van 4° E

875 Log road

4193 fell 84 1/2 N of 1/4 P. set by Dorf in 1897

found cedar and double birch both down

Set new cedar post and made new bearing. A gray boulder 4 x 6 feet bears NW + SE. and has a hole shaped like

This  on west side. 3 inches deep. and bears S. 84° E 30 Lks. see - 200 change surse 10'

West from N 1/4 P. Van 3° E

1100 Enter Swamp

3300 Leave "

3700 Enter "

4178 fell 163 N of NW cor in center of road ok This corner was set by Dorf. bearings are gone. nothing near for others

South from NW cor in a road

8207 fell to W of SW cor. found org. trees all down & nearly burned up. no other near

East from SW cor Van 3 1/2° E

= JUN 6 1919 =

1450 enter wet marsh

2675 over "

4149 fell 27 1/2 S. of S. 1/4 P. found the east org. tree ok but dead. west one is down set new post and made one new bearing  $\frac{1}{2}$  HEM 10 South 29

East from S 1/4 Post Van 4° E

4181 fell 199 1/2 N of S.E. cor. found a post set 12 years ago from org trees NW bearing  $\frac{1}{2}$  ELM 16 S 68 E 52

E 1/4 P. set it from my random line of Oct 1918 see page 141 This book, did

not set 1/4 P at that time

...  $\frac{1}{2}$  Birch 8 S 8 1/2 W 16

...  $\frac{1}{2}$  Spruce 8 N 16 W ---

West from E 1/4 P Van 2.45

875 Log road

6450 Line Fence. over



8365 FELL 143 N. of W<sup>1</sup>/<sub>4</sub>P. which I set at  
4103 and equidistant between NW  
and SW corners. This Post is 25 Lks E.  
of Wagon road. Nothing for bearings

S<sup>1</sup>/<sub>4</sub>P. Run north var 4<sup>1</sup>/<sub>2</sub>E  
8322 FELL 93 E. of N<sup>1</sup>/<sub>4</sub>P. Dec. in change course 65  
center of section } Birch 8 S 69<sup>1</sup>/<sub>2</sub> W 9

Dist. to N<sup>1</sup>/<sub>4</sub>P. 4242 Dist. to E<sup>1</sup>/<sub>4</sub>P. 4176

S<sup>1</sup>/<sub>4</sub>P. 4080 W. " 4189

1/8 P. E of center } Hem 14 N 85<sup>1</sup>/<sub>2</sub> W 29

" " 15 N 11<sup>1</sup>/<sub>2</sub> W 14

E<sup>1</sup>/<sub>8</sub> P on N Line } Sugar 10 S 22 W 36<sup>1</sup>/<sub>2</sub>  
no other near

North from 1/8 P E of center var 5° east

4314 FELL 70 W of 1/8 P

S<sup>1</sup>/<sub>8</sub> P on E Line } Sugar 28 N 45 E 1 Link  
Hem 14 S 68 W 27

West from S<sup>1</sup>/<sub>8</sub> P on E Line var 4° E

4180 FELL 70 S of 1/8 P. South of center  
which I set } Hem 8 P 20 N 31 W 9<sup>1</sup>/<sub>2</sub>

" " 20 S 12<sup>1</sup>/<sub>2</sub> E 30

1/16 P in SE 1/4 } Pinest 16 S 36 E 7. set with  
Pocket compass No other

South from 1/8 P E of center var

2098 FELL 10 West of 1/16 Post

1/8 P N. of center } Birch 8 N 21<sup>1</sup>/<sub>2</sub> E 15<sup>1</sup>/<sub>2</sub>  
maple 10 S 66 E 23

West from 1/8 P N of center var 3° E

4185 FELL 185 N of N<sup>1</sup>/<sub>8</sub> P on west line

N<sup>1</sup>/<sub>8</sub> P. on west line pole with 2 notches  
bears N 35 E Iron pipe for Post

1/16 P in NW 1/4 No bearings. it sets 100

South of center of small Swamp

South from 1/16 P in NW 1/4 var 33<sup>1</sup>/<sub>4</sub>

2070 FELL 17<sup>1</sup>/<sub>2</sub> W of 1/8 P west of center

which is } Birch 12 N 43 E 18<sup>1</sup>/<sub>2</sub>

W Pine 4 S 71 W 34

To not to work, am tired out. Will  
finish later on June 14 1919

Sec 35-36-9 Oct 10 1918

NW Cor. found Post ok bearings made by  
Dorr are nearly gone. made new one  
 { as set 71.4 S. 66 1/2 W 39

Run south Var 4° E

1800 Enter Creek bottom

1950 Stream 20 runs S.W

2200 Leave bottom & enter Swamp

5800 Stream 25 runs SW

7500 Leave Swamp + Low ground

8663 fell 6 Links west of SE cor. found  
Stump of SE. org tree is a stub 6 ft high  
There is a wet marsh, Et being N. of this  
cor. for about 300 no green timber near  
The post is ok

5/8 Post on W Line { sugar 28 N 45 E 1 Link  
 { Hem 14 S 68 W 27 "

Did not set West 1/4 P.

East from S 1/8 P. on W Line Var 3° E

2500 Stream 20 runs W. of NW

8334 fell 98 N of 1/8 P. which I set in Aug 1907

see Page 208 Dorr book of field notes

as I have run ALL SEC. Lines in this Sec

and set N 1/4 P. E 1/4 P. and N + S 1/8 Post on the  
E Line and N. Line and S. Line and found the  
orig 1/4 Post on S Line. and have run the N + S  
1/4 Line and set Temp. center of sec. also the

Temp 1/8 P. South of center. I corrected the

South 1/8 Line at corrected N + S 1/4 Line and

found the S 1/4 P. is 17 Links N. of true Line

6 from NW to SE cor I sprung corrected 1/8 Line

north and set 1/8 P. south of center at 4127

E. of S 1/8 on W. Line { Spruce 10 West 7 Lks, and

corrected S 1/8 Line west and set 1/16 Post in

S.W. 1/4 at 2063 1/2 { Sugar 7 N 62 E 29 1/2

{ " " 8 N 85 W 21

South from 1/16 in SW 1/4 Var 7.15° E

2158 fell 13 West of 1/8 which I set in Aug 1907

Corrected Line N to 1/16 Post

This is all at present. found trespass on the  
NESW. NWSE. and NESE

PAGES 142-176  
BLANK

INDEX

Section	TOWNSHIP		RANGE		CITY		ADDITION
	N.	S.	E.	W.	VILLAGE		
35	36		9				
34	36		9				
21	36		9				
15	36		9				
6	36	by H. C. Hall	9			Lot 1 Blk. 3 First Addn. to Rhinelanders and part of Lot 2.	
2	36		9				
6	36		9			Lot 4, Blk. 19. Orig. Plat of Rhinelanders and the North 15 feet of Lot 3 (Blk. 19)	
6	36		9			Lot 2 Blk. 2 1st Addn to Rohl.	
6	36		9			Part Lot 1 Blk 3 Suthiffs Addn	
5	36		9			W. line (approx.) Lot 1 B. 25 2nd Add.	
3	36		9			Approx. boundaries NW SW	
15-16-22	"		"			Crucising	
6	"		"			Levels at Army Site	
6	"		"			Lot 2 Blk 7 Keenais Addn	
5	"		"			Lot 3 " 20 2nd Addn	
6	"		"			3 " 6 Keenais 2nd	
6 & 7	"		"			W. end Lots 5 & 2	

INDEX

FOR WHOM SURVEYED	WHEN SURVEYED			Page	
	Day	Month	Year		
WOLF RIVER Lb. Co	10	Oct	1918	141	
" " " "	14	JUNE	1919	137-8	
GUY DAILY ET. AL.	14	Sept	1919	Ø85	
Eagles' Club (Aerie #359)		June	1929	29	
Sam Johnson	4th	Oct.	1929	6	
Omeida Co. Memorial Association - by Col. Wesley, Nat'l. Guard (Army Site)		August + Sept	1929	42-51	
M. A. Shaska	22	March	1930	52	
J. Earl Kettner	5	April	1930	54	
Dr. R. P. Kirsch	14	April	1930	56	
Jas. Fredricksow R.R. #2	26	June	1930	14	
Jas. H. Cross	14th	17th	March	1930	86
Gardner	5th + 10th	May	1930	58	
Ed Yauke		June April	1930 1931	59	
E. A. Macdonald	7th	July	1931	67	
W. D. Wright				68	
Wis. Cons. Com.	26	Feb.	1934	74	
"	5	May	"	76	