

RH AIRPORT BK1

POSTS

FIELD BOOK

No. 335

NOTE BOOK No. 1

SURVEY OF PROPOSED

AIRPORT

SITUATED IN

SEC. 2, T. 36N., R. 9E,
TOWN OF CRESCENT
ONEIDA COUNTY, WIS.

WISCONSIN

STATE PLANNING BOARD

STATE OFFICE BLDG.,

MADISON, WIS.

INDEX-PAGE 80

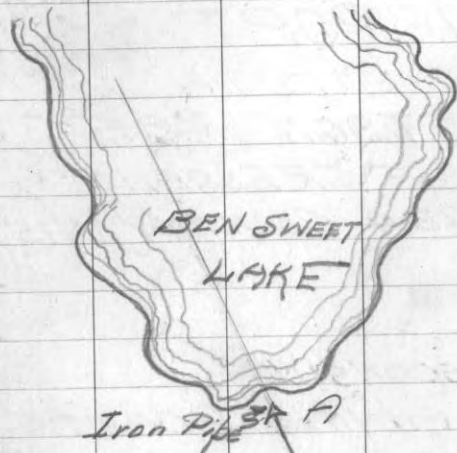
F. R. WINCENTSEN

SURVEYOR & RECORDER

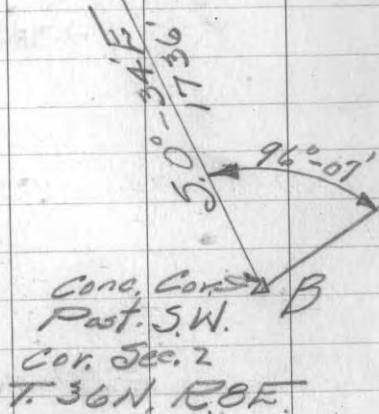
DEC. 17, 1941 - JAN. 31, 1942

LINE "A" = N.E. - S.W. RUNWAY

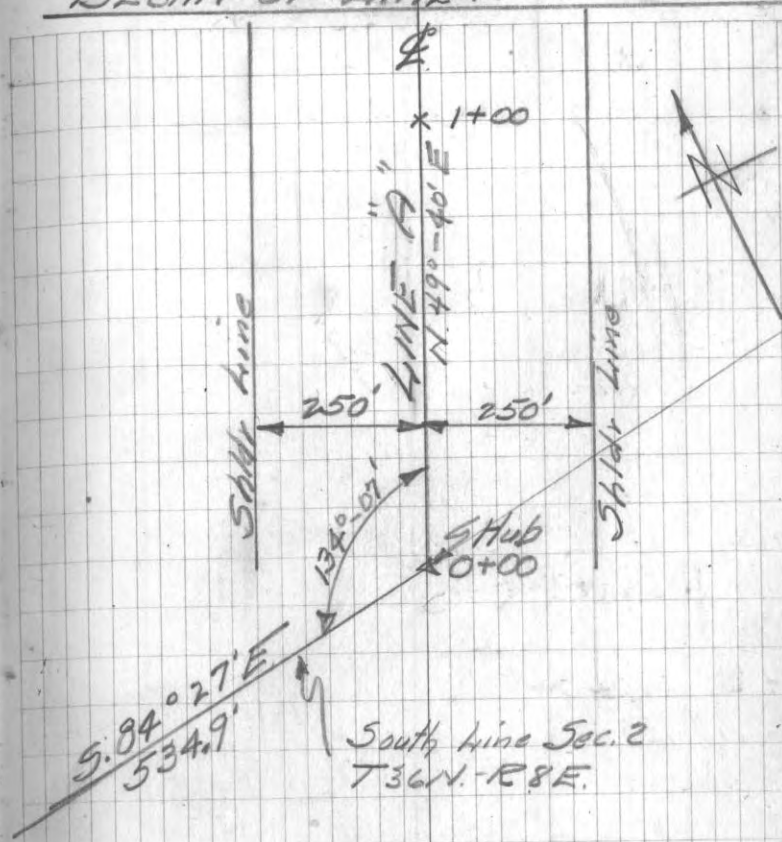
B.S.	INST.	F.S.	CLOCK WISE HOR. L.	HOB DIST.	TRUE BEAR.
A	B	0+00	96°-07'	534.9	S 84°-27' E
B	0+00	1+00	134°-01'	100.0	N 49°-40' E



W. Line Sec. 2
T. 36 N. R. 8 E.



TRaverse FROM SEC. COR. TO BEGIN' OF LINE "A"



NOTE:
See pg. 3 for Line "A"
Alignment Notes
Sta. 0+00 to Sta. 48+12.

LINE "A" = N.E. - S.W. RWY 2.

CROSS SECTIONS

G = Ground Surface
M = Bottom Muck R.

Sta.

L.

R.

13.10 115.29 102.19 B.M. #9

0+00	260	231	200	145	100	68	4	50	100	138	200	260
	2.60	0.231	2.00	1.45	1.00	0.68	0.4	0.50	1.00	1.38	2.00	2.60
	11.3	6.7	5.9	7.4	4.5	3.4	2.5	1.3	4.9	5.2	6.1	7.8

1+00	260	224	200	143	100	4	22	55	100	165	200	260
	2.60	2.24	2.00	1.43	1.00	0.4	0.22	0.55	1.00	1.65	2.00	2.60
	16.7	14.0	11.5	10.1	12.8	9.1	8.0	10.3	10.0	8.8	10.7	8.6

6.55 108.14 13.70 101.59

1+54	260	200	153	100	82	4	79	100	186	200	260
	2.60	2.00	1.53	1.00	0.82	0.4	0.79	1.00	1.86	2.00	2.60
	8.2	13.2	15.6	12.0	10.6	8.3	7.5	9.7	9.8	8.8	4.6

2+00	4.04	100.68	11.50	96.64										
	179	144	100	26	48	90	100	165	200	230	260			
	2.60	2.00	1.44	0.26	0.48	0.90	1.00	1.65	2.00	2.30	2.60			
	3.7	12.2	14.7	16.8	14.8	13.8	14.7	7.9	4.0	11.5	2.1	0.2	0.1	2.3

2+09	G 200M	G 100M	G R.M	G 23M	48	100	145					
	260	15.7	0.0	16.5	0.0	16.4	0.0	16.7	0.0	11.7	3.0	0.1
	7.1											

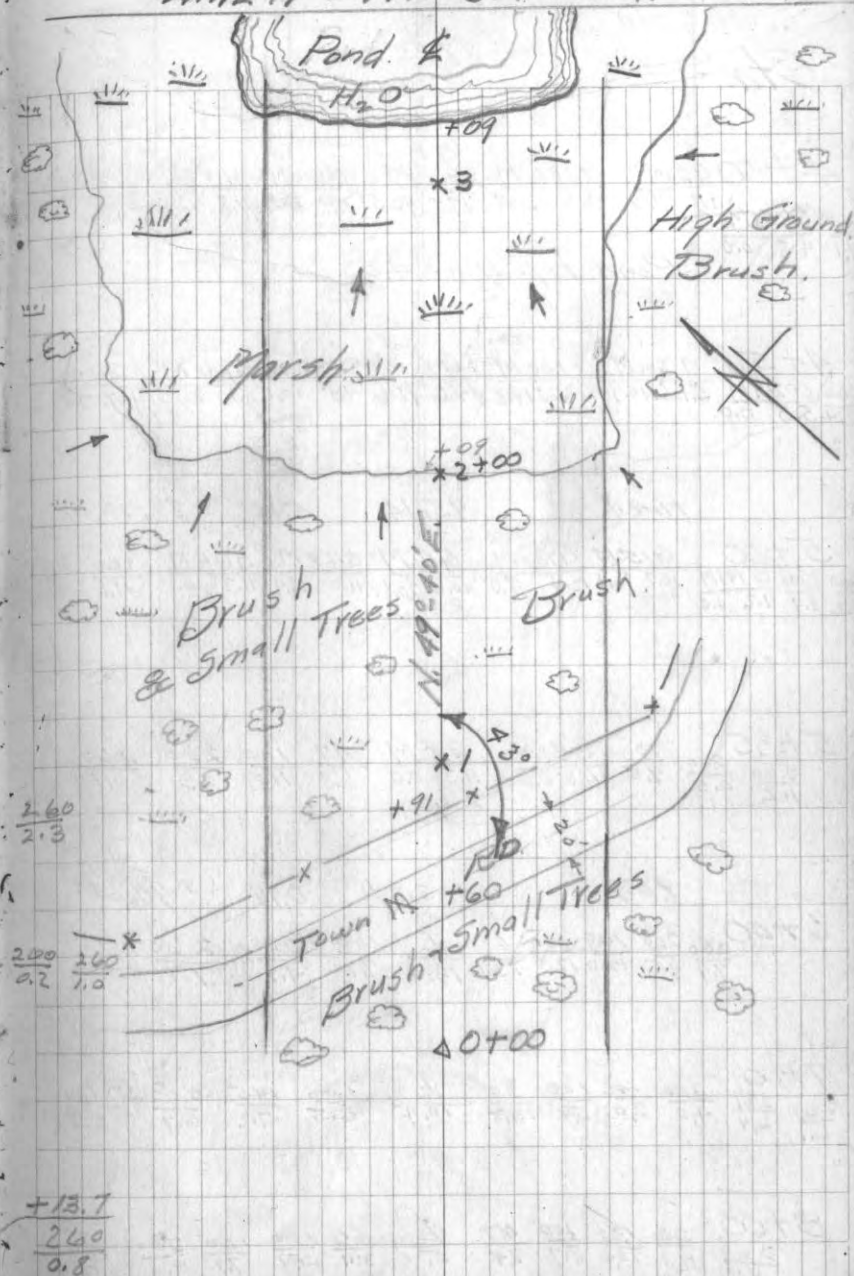
1.63 28.85 13.46 87.22

2+50	G 200M	G 100M	G R.M	G 80M	100	140	260						
	260	G 232M	5.0	7.0	4.7	10.7	4.7	6.7	4.0	2.0	2.1	1.6	2.8
	0.2	4.2	0.0										

3+00	G 200M	G 100M	G R.M	G 50M	G 100M	G 120M							
	G 260M	5.0	11.0	4.4	24.5	4.7	27.1	4.7	9.5	4.5	7.3	4.3	0.0
	4.9	0.0											

LINE "A" = NE-SW R.WY.

3



Sta.

88.85

4+00	9200M	9100M	9000M	9100M	9140M	9182M
265	4.7	11.3	13.2	30.7	17.5	42.5
4.1	4.8	0.0	7.1	84.0	4.9	10.9
				4.8	13.7	4.0
						0.0

Pond top $H_2 = 4.2$
84.7

4+50	9200M	9100M	9000M	9150M	9100M	200
260	5.1	10.9	9.2	19.2	14.6	18.6
2.4	5.0	0.0	4.9	10.1	5.1	0.0
						1.2

11.44 95.14 5.15 83.70

5+00	9150M	9100M	9000M	9400M	964M	100	200
260	10.7	16.4	12.4	18.0	10.6	20.6	11.0
3.2	9.7	11.2	0.0	11.0	13.4	11.3	0.0
						4.1	0.8

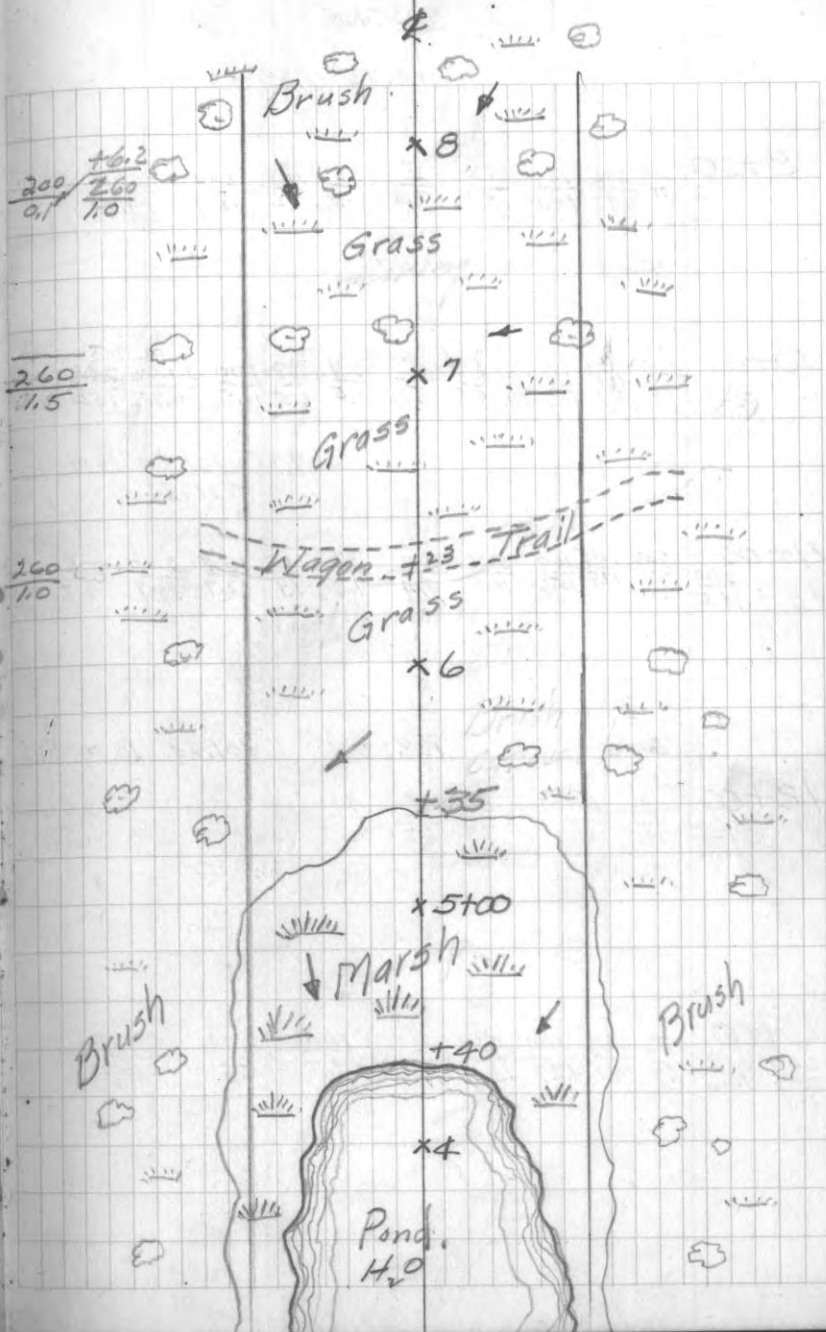
5+35	100	990M	98M	47	100	200	260
260	9.5	11.3	0.0	11.3	0.0	6.8	11.0
1.2	0.5					0.3	0.1

95.9 103.74 0.99 94.15

6+00	200	149	100	66	100	200	260
260	7.9	6.5	12.0	12.0	13.6	13.0	7.1
							4.9
							1.1

7+00	200	146	150	30	100	145	200	260
260	4.0	2.0	5.9	13.8	10.4	6.5	7.2	6.7
6.1	6.4							3.5

8+00	200	132	100	47	66	100	160	200	260
260	4.3	10.4	8.7	9.4	5.7	3.4	5.4	7.1	9.0
4.7									6.4
					98.0				



8.32

103.74

110.73 1.33 102.41

9+00	260	200	100	58	5	55	100	200	260
	10.5	9.9	14.1	15.7	7.6	2.3	9.2	12.9	14.2

5.48

111.78 4.43 106.30

10+00	260	231	181	118	100	55	29	68	100	200	260
	16.5	17.9	20.1	17.9	15.1	8.8	5.2	2.5	6.5	10.5	10.7

9.98 101.89 B.M. #10
101.84

11+00	260	200	145	100	57	31	100	154	200	260
	15.5	17.9	17.8	15.6	10.5	9.4	7.0	9.9	12.7	10.7

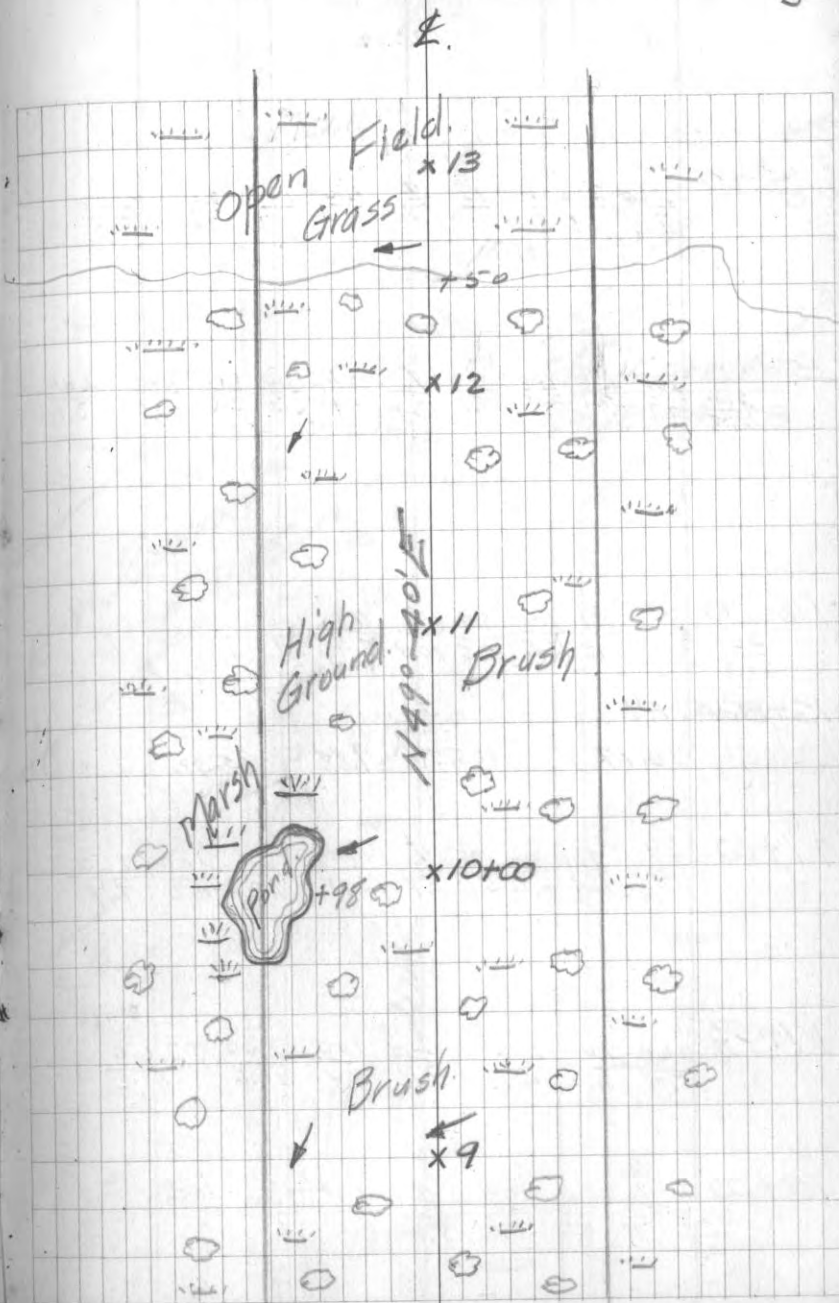
6.38

108.22

101.84 B.M. #10

12+00	260	200	161	100	57	41	100	154	200	260
	7.1	10.5	12.1	10.1	7.3	6.7	4.0	6.5	11.0	8.4

13+00	260	162	142	100	29	100	200	260	
	8.7	15.6	17.7	14.1	17.7	13.4	11.8	9.8	
								5.8	4.9



5/4.

108.22

7.74

105.20

107.6

97.46

14+00

260	200	100	18	4	40	100	200	260
7.6	7.2	8.9	7.8	8.6	10.4	6.2	2.4	2.2

15+00

260	200	191	100	53	37	100	141	200	260
27.8	22.7	22.1	30.1	18.1	13.0	9.7	6.2	3.6	3.0
			88.1	45.2					105.1

16+00

260	200	161	100	67	47	100	200	260
20.8	21.3	20.8	16.5	15.5	10.9	8.5	6.7	4.2

16+86A P.I.

10.19

105.51

9.88

95.32

17+00

260	200	100	78	4	100	162	200	260
13.0	11.4	6.2	5.6	5.8	6.0	7.0	10.2	6.1

17+55

260	200	100	4	100	200	260
7.3	6.3	4.2	9.1	7.9	10.6	6.4

18+00

260	200	100	38	4	64	100	200	260
6.0	7.8	5.0	8.2	8.6	8.2	6.1	4.2	4.0



Sta.

105.51

19+00	$\frac{260}{6.1}$	$\frac{200}{5.7}$	$\frac{100}{5.7}$	$\frac{\$}{6.0}$	$\frac{100}{4.3}$	$\frac{200}{3.6}$	$\frac{260}{3.8}$
-------	-------------------	-------------------	-------------------	------------------	-------------------	-------------------	-------------------

6.95 107.52 4.94 100.57

20+00	$\frac{260}{5.6}$	$\frac{200}{7.2}$	$\frac{100}{4.6}$	$\frac{\$}{6.5}$	$\frac{100}{6.5}$	$\frac{200}{6.6}$	$\frac{260}{6.5}$
-------	-------------------	-------------------	-------------------	------------------	-------------------	-------------------	-------------------

21+00	$\frac{252}{5.7}$	$\frac{200}{6.1}$	$\frac{100}{4.0}$	$\frac{\$}{5.8}$	$\frac{100}{6.6}$	$\frac{200}{6.4}$	$\frac{260}{6.2}$
-------	-------------------	-------------------	-------------------	------------------	-------------------	-------------------	-------------------

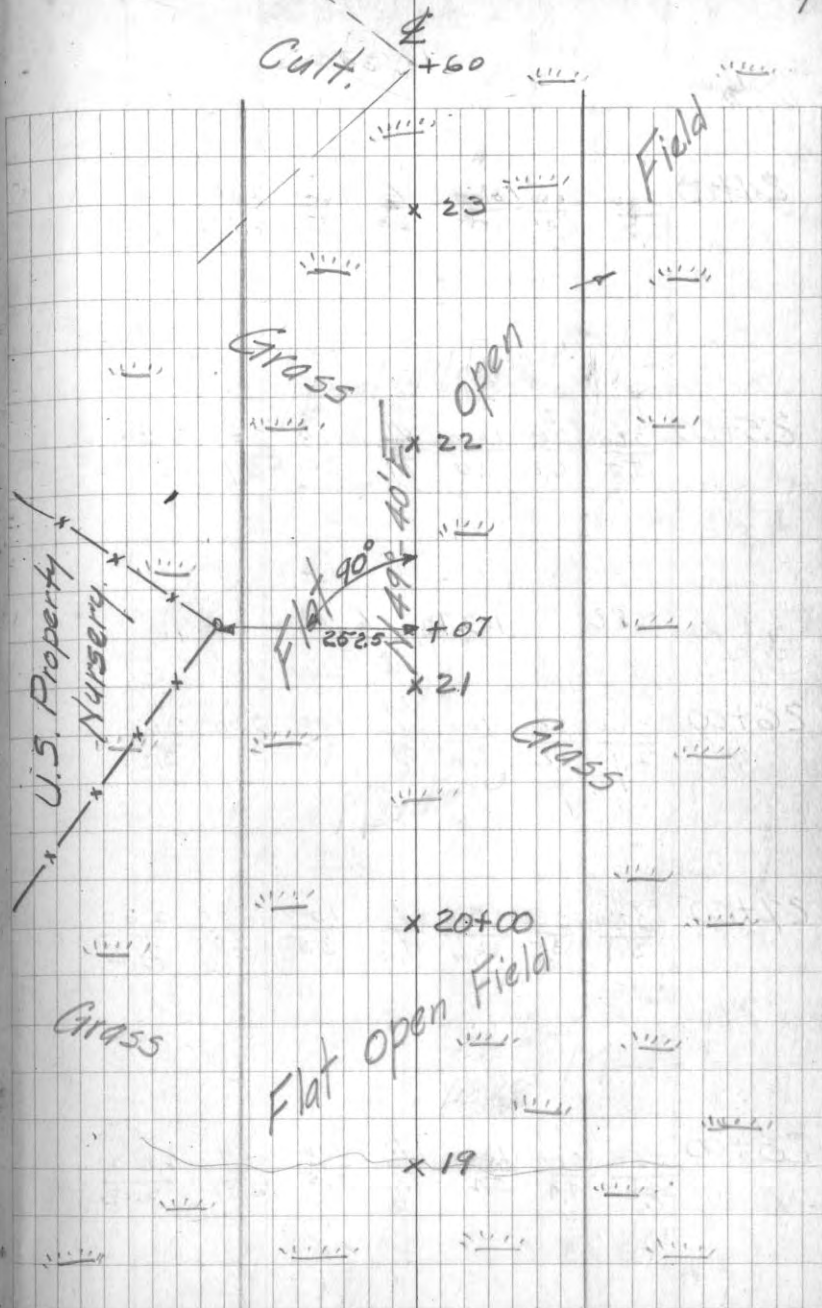
1.06 106.46 B.M. #1

1.02 107.42 106.40 Corr.

22+00	$\frac{260}{5.9}$	$\frac{200}{6.1}$	$\frac{100}{6.2}$	$\frac{\$}{6.6}$	$\frac{100}{6.3}$	$\frac{200}{5.8}$	$\frac{260}{6.1}$
-------	-------------------	-------------------	-------------------	------------------	-------------------	-------------------	-------------------

0.94 107.34 106.40 B.M. #1

23+00	$\frac{260}{6.1}$	$\frac{200}{6.2}$	$\frac{100}{6.3}$	$\frac{\$}{6.0}$	$\frac{100}{6.2}$	$\frac{200}{5.8}$	$\frac{260}{6.3}$
-------	-------------------	-------------------	-------------------	------------------	-------------------	-------------------	-------------------



107.34

Sta.

24+00	$\frac{260}{6.2}$	$\frac{200}{6.0}$	$\frac{100}{6.0}$	$\frac{4}{6.3}$	$\frac{100}{6.3}$	$\frac{200}{6.7}$	$\frac{260}{6.5}$
-------	-------------------	-------------------	-------------------	-----------------	-------------------	-------------------	-------------------

25+00	$\frac{260}{5.8}$	$\frac{200}{6.2}$	$\frac{100}{7.0}$	$\frac{4}{7.1}$	$\frac{100}{7.0}$	$\frac{200}{6.7}$	$\frac{260}{6.2}$
-------	-------------------	-------------------	-------------------	-----------------	-------------------	-------------------	-------------------

2.82 103.73 6.43 100.91

26+00	$\frac{260}{2.9}$	$\frac{200}{3.2}$	$\frac{100}{3.6}$	$\frac{4}{3.8}$	$\frac{100}{3.5}$	$\frac{200}{3.1}$	$\frac{260}{3.2}$
-------	-------------------	-------------------	-------------------	-----------------	-------------------	-------------------	-------------------

27+00	$\frac{260}{3.1}$	$\frac{200}{3.8}$	$\frac{100}{4.6}$	$\frac{4}{4.6}$	$\frac{100}{3.5}$	$\frac{200}{2.8}$	$\frac{260}{2.2}$
-------	-------------------	-------------------	-------------------	-----------------	-------------------	-------------------	-------------------

28+00	$\frac{260}{4.0}$	$\frac{200}{4.4}$	$\frac{100}{5.4}$	$\frac{4}{5.6}$	$\frac{100}{3.5}$	$\frac{200}{2.8}$	$\frac{260}{2.3}$
-------	-------------------	-------------------	-------------------	-----------------	-------------------	-------------------	-------------------



Sta.

103.73

29+00	$\frac{260}{4.2}$	$\frac{200}{4.7}$	$\frac{100}{5.2}$	$\frac{\$}{5.6}$	$\frac{100}{4.8}$	$\frac{200}{3.5}$	$\frac{260}{3.2}$
-------	-------------------	-------------------	-------------------	------------------	-------------------	-------------------	-------------------

30+00	$\frac{260}{4.2}$	$\frac{200}{4.5}$	$\frac{100}{5.0}$	$\frac{\$}{5.4}$	$\frac{100}{5.4}$	$\frac{200}{5.5}$	$\frac{260}{4.2}$
-------	-------------------	-------------------	-------------------	------------------	-------------------	-------------------	-------------------

5.45 106.86 2.32 101.41

31+00	$\frac{260}{7.5}$	$\frac{200}{6.8}$	$\frac{100}{6.5}$	$\frac{\$}{6.8}$	$\frac{100}{7.7}$	$\frac{200}{7.9}$	$\frac{260}{8.4}$
-------	-------------------	-------------------	-------------------	------------------	-------------------	-------------------	-------------------

32+00	$\frac{260}{6.7}$	$\frac{200}{6.6}$	$\frac{100}{5.9}$	$\frac{\$}{5.7}$	$\frac{100}{6.5}$	$\frac{200}{7.3}$	$\frac{260}{7.4}$
-------	-------------------	-------------------	-------------------	------------------	-------------------	-------------------	-------------------

33+00	$\frac{260}{6.4}$	$\frac{200}{5.8}$	$\frac{100}{5.9}$	$\frac{\$}{5.2}$	$\frac{100}{6.1}$	$\frac{200}{6.7}$	$\frac{260}{6.3}$
-------	-------------------	-------------------	-------------------	------------------	-------------------	-------------------	-------------------

9

£.

Grass

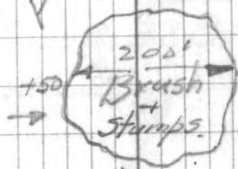
x 33

x 32

x 31

x 30+00

x 29

Field
Grass

Open

level

Grass

Sta.

106.86

34+00 $\frac{260}{6.2}$ $\frac{200}{6.2}$ $\frac{100}{5.8}$ $\frac{100}{5.4}$ $\frac{100}{5.3}$ $\frac{200}{5.5}$ $\frac{260}{5.9}$

35+00 $\frac{260}{6.6}$ $\frac{200}{6.6}$ $\frac{100}{5.7}$ $\frac{100}{5.5}$ $\frac{100}{5.0}$ $\frac{200}{5.1}$ $\frac{260}{5.2}$

P.I. + 46.7

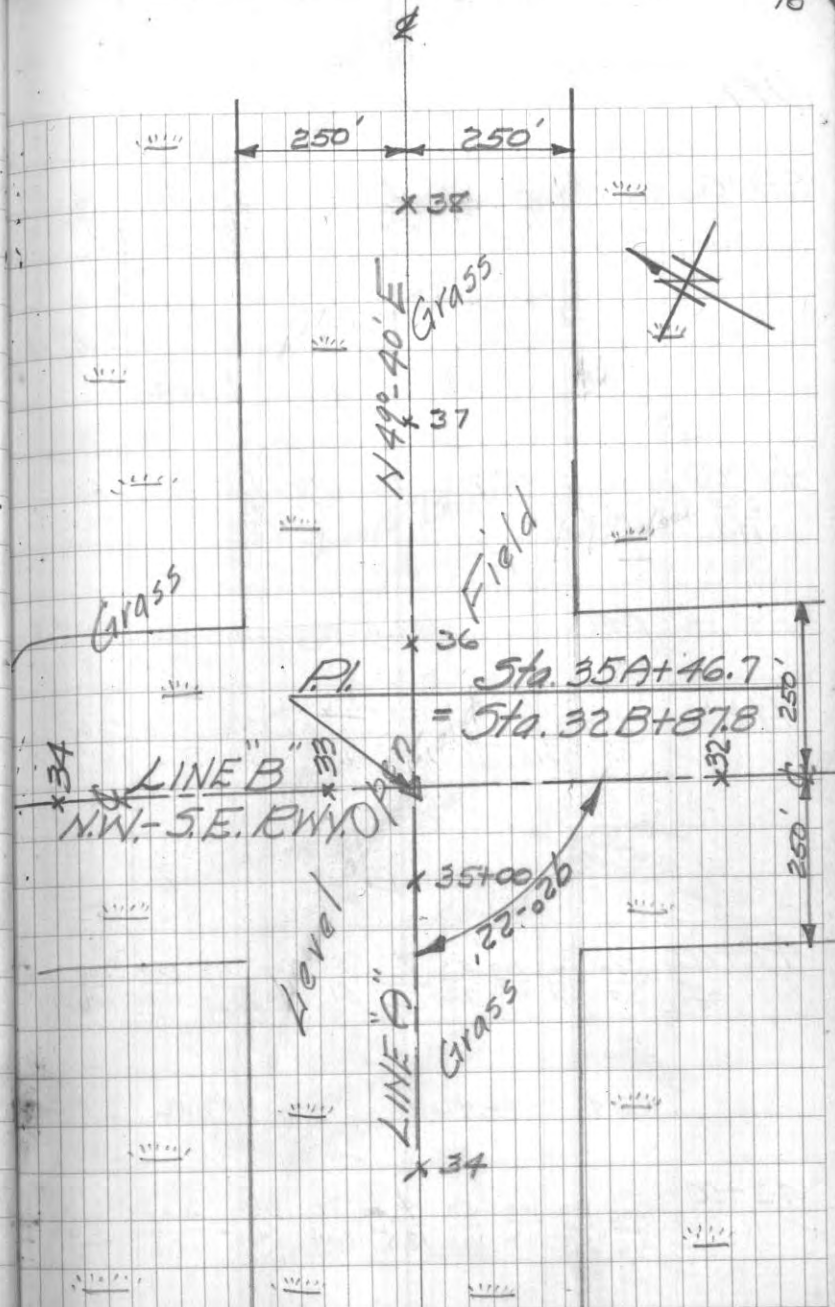
$\frac{100}{5.1}$

36+00 $\frac{260}{7.7}$ $\frac{200}{6.8}$ $\frac{100}{5.3}$ $\frac{100}{5.3}$ $\frac{100}{5.5}$ $\frac{200}{5.0}$ $\frac{260}{5.4}$

3.85 106.05 4.66 102.20

37+00 $\frac{260}{9.0}$ $\frac{200}{6.7}$ $\frac{100}{5.3}$ $\frac{100}{4.8}$ $\frac{100}{4.3}$ $\frac{200}{4.1}$ $\frac{260}{4.0}$

38+00 $\frac{260}{12.2}$ $\frac{200}{8.1}$ $\frac{100}{5.6}$ $\frac{100}{5.2}$ $\frac{100}{4.4}$ $\frac{200}{4.0}$ $\frac{260}{3.9}$



Sta.

106,05

39+00	200	164	137	100	4	100	200	260
	260	22.1	20.2	12.2	9.1	5.5	4.7	4.7
	23.0							

3.96 102.09 B.M.#4

4.00 106.12 102.12

40+00	255	200	100	35	20	4	100	160	200	260
	260	19.8	19.7	19.8	19.6	15.1	11.6	7.6	8.1	8.7
	17.7									7.5

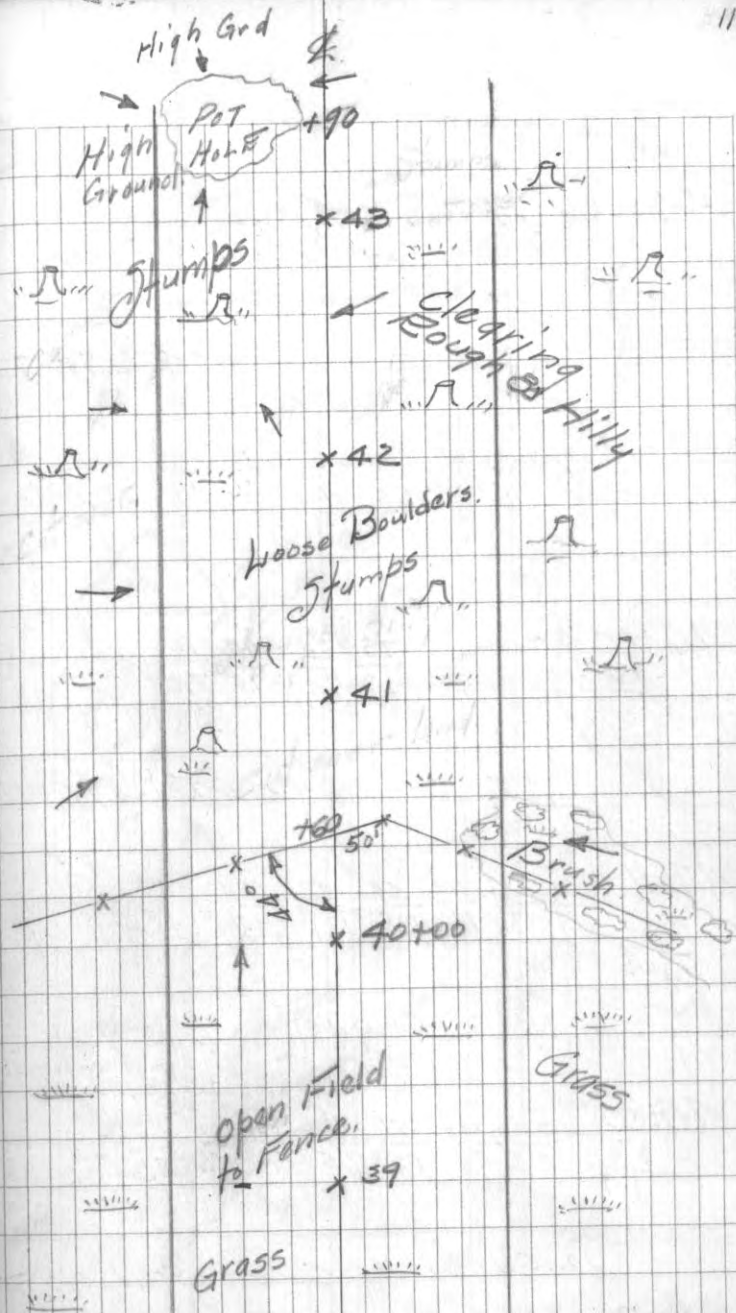
0.41 102.53 102.12 B.M.#4

41+00	260	200	100	4	100	136	200	260
	0.1	7.1	7.8	8.2	10.1	7.0	10.5	9.7

42+00	300	143	100	53	4	59	100	148	154	200	260
	260	3.0	6.3	6.2	7.2	6.2	8.1	7.0	8.5	12.6	10.4
	3.2										7.4

0.34 102.46 102.12 B.M.#4

43+00	200	140	100	50	4	70	100	200	260	
	260	4.4	4.8	11.2	16.2	18.5	16.4	14.5	15.6	10.8
	3.2								8.9	



Sta. 102.46

44+00 $\frac{260}{8.5} \frac{200}{8.6} \frac{140}{21.6} \frac{100}{24.5} \frac{\$}{19.5} \frac{40}{14.1} \frac{100}{7.6} \frac{200}{10.2} \frac{260}{13.7}$

4.11 102.69 3.88 98.58

45+00 $\frac{260}{8.7} \frac{200}{13.2} \frac{140}{10.1} \frac{100}{6.5} \frac{\$}{4.5} \frac{80}{7.6} \frac{100}{11.1} \frac{200}{12.4} \frac{260}{14.0}$

46+00 $\frac{260}{20.1} \frac{200}{17.4} \frac{100}{18.3} \frac{73}{16.3} \frac{\$}{11.1} \frac{47}{7.0} \frac{100}{8.6} \frac{200}{7.5} \frac{260}{16.8}$

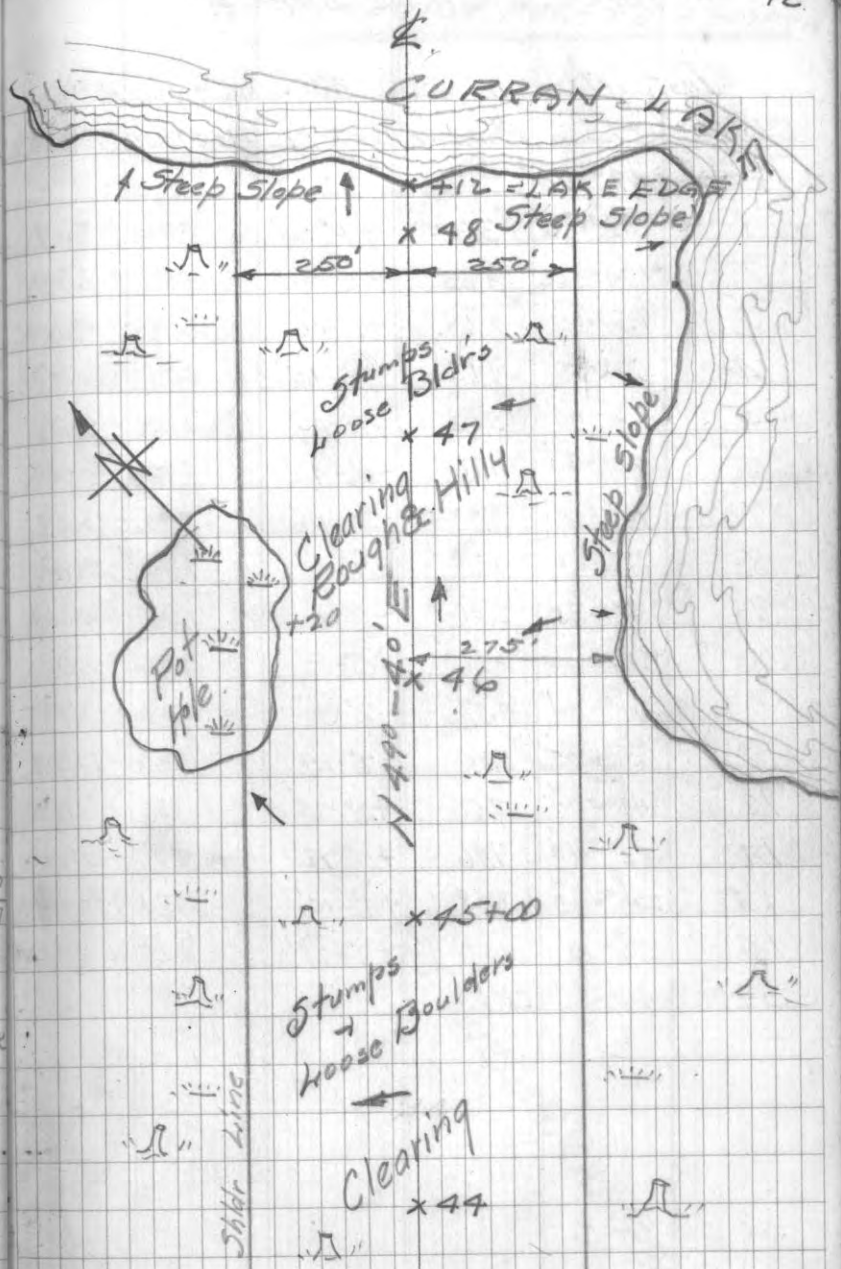
6.58 106.46 2.81 99.88

47+00 $\frac{260}{30.8} \frac{200}{18.1} \frac{134}{17.1} \frac{100}{18.3} \frac{50}{19.8} \frac{\$}{17.1} \frac{40}{9.4} \frac{63}{34} \frac{100}{1.3} \frac{200}{8.1} \frac{260}{16.7}$

140 94.81 13.05 93.41
+ Granite Rock
25' RT STA. 47+90

48+00 $\frac{260}{1.7} \frac{200}{5.3} \frac{100}{5.8} \frac{51}{8.3} \frac{\$}{7.5} \frac{50}{5.0} \frac{100}{6.2} \frac{200}{8.6} \frac{230}{10.3} \frac{260}{20.6}$

12.56 = top H₂O CURRAN LAKE
48+12 SHORE LINE = 12.56

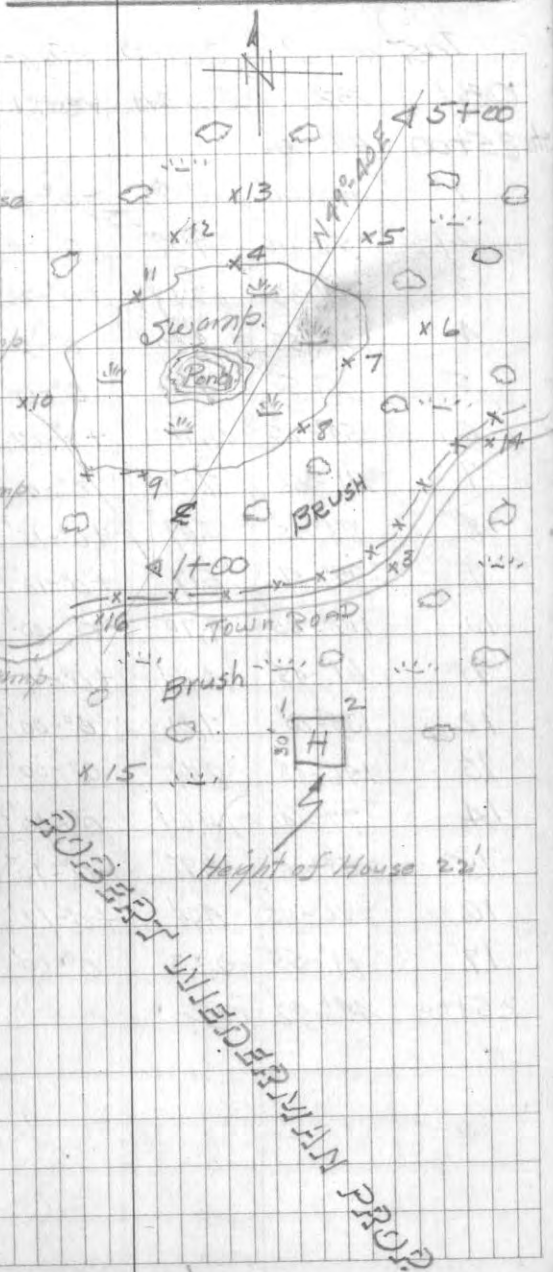


TOPOG. DETAILS LINE "A"

Inst. at Sta. 1+00 ELEV=106.19 H.I.=4.9.

OBJ.	AZ.	RED. INT.	VERT. L	HOR. DIST	DIFF. E.	ELEV.
Sta. 5+00	49°-40'					
1	136°-55'	3.32	+0°-30'	332	+2.89	109.1 NW. Cor. House
2	134°-22'	3.55	+0°-30'	355	+3.09	109.3 NE. " "
3	95°-35'	2.68	-1°-00'	268	-4.66	101.5 Ctr. Road
4	50°-25'	4.42	-2°-45'	441	-2.117	85.0 N. Edge Swamp
5	56°-05'	5.03	-1°-05'	503	-9.51	96.7 Ground
6	70°-30'	4.96	-0°-42'	496	-6.05	100.1 " "
7	72°-55'	3.73	-3°-10'	372	-20.59	85.6 E. Edge Swamp
8	77°-20'	1.62	-7°-12'	159	-20.19	86.1 SE. " "
9	349°-35'	2.01	-1°-11'	201	-4.15	102.0 SW. " "
10	337°-20'	3.36	-0°-30'	336	-2.92	103.3 Ground
11	11°-04'	4.07	-2°-30'	406	-17.75	88.4 NW. Edge Swamp
12	5°-05'	5.04	-2°-24'	503	-21.07	85.1 Ground
13	314°-45'	7.56	+0°-25'	759	+5.52	111.7 Ground
14	82°-10'	7.96	+0°-18'	796	+4.14	110.3 Ctr. Road
15	220°-30'	3.28	+4°-00'	326	+22.83	129.0 Ground
16	272°-13'	2.26	+2°-28'	226	+9.72	115.9 Ctr. Road
5+00	49°-38'	OK				

NOTE! - ALL AZIMUTH READINGS IS
CLOCK WISE FROM TRUE NORTH



Inst. at Sta 22+00 Elev = 100.82, H.I. = 5.10

OBJ.	AZ.	ROD INT.	VERT. L.	HOR. DIST.	DIFF. ELEV.	ELEV.
Sta. 25+00	49°-40'					
1	283°-41'	7.56	-0°-28'	756 -6.12	94.7	Fence Line
2	56°-15'	9.09	0°-00'	909 -	100.8	Ground
3	299°-33'	2.67	+0°-28'	267 +2.16	103.0	S.E. Fence Cor.
4	59°-55'	8.60	0°-00'	860 -	100.8	S.S. Pot. Hole
5	65°-52'	8.22	0°-00'	822 -	"	E.S. " "
6	354°-25'	11.78	+0°-07'	1179 +2.36	103.2	N.E. Fence Cor.
7	71°-50'	7.13	0°-00'	713 -	100.8	Ground
8	88°-25'	5.69	+0°-15'	569 +2.50	103.3	"
9	99°-56'	5.17	+0°-10'	517 +1.50	102.3	"
10	117°-05'	4.70	0°-00'	470 -	100.8	"
11	61°-45'	13.44	+0°-11'	1345 +4.30	105.1	"
12	135°-00'	7.61	0°-00'	761 -	100.8	"
13	146°-43'	8.49	0°-00'	849 -	"	"
14	77°-40'	14.64	0°-00'	1465 -	"	"
15	258°-15'	3.98	-0°-10'	398 -1.15	99.7	"
16	266°-45'	5.94	+0°-12'	594 +2.08	102.9	"
17	81°-55'	2.23	0°-00'	223 -	100.8	"
25+00	49°-42'	CK.				

J.S. NURSERY PROPERTY CULT.



Inst. at Sta 45+00 ELEV = 98.19 H.I. = 5.72

OBL.	AZ.	RADINT.	VERT. L.	HOR. DIST.	DIFF. ELEV.	ELEV.
48+00	49°-40'					
1	260°-50'	1.20	-9°-05'	117	-18.71	79.5
2	309°-10'	5.16	+2°-28'	515	+22.19	76.0
3	324°-22'	4.60	-1°-00'	460	-8.00	90.2
4	348°-45'	2.04	-3°-50'	203	-13.61	84.6
5	2°-30'	3.32	-2°-30'	331	-14.48	83.7
6	346°-21'	4.31	-1°-40'	431	-12.54	85.7
7	348°-05'	6.25	+2°-15'	624	+24.53	122.7
8	36°-50'	2.12	-3°-30'	211	-12.91	85.3
9	77°-20'	1.95	+3°-05'	195	+10.59	108.8
10	282°-20'	6.40	+1°-45'	639	+19.52	117.7
11	282°-20'	4.73	+0°-40'	473	+5.49	103.7
12	114°-10'	8.80	-1°-00'	880	-15.31	82.9
13	126°-00'	7.21	+1°-25'	721	+17.81	116.0
14	133°-30'	2.76	-3°-10'	275	-15.24	83.0
15	138°-30'	5.42	-1°-35'	542	-14.96	83.2
48+00	49°-40'	CK				



Inst at Sta. 48+00 ELEV.=87.51 H.I.=5.0

OBJ.	AZ.	PODINT.	VERT. L.	HOR. DIST.	DIFFER.	ELEV.
45+00	229°-40'					
1	336°-47'	3.51	-0°-40'	351	-4.07	83.2
2	351°-00'	6.19	-0°-30'	619	-5.39	81.9
3	83°-50'	12.20	0°-00'	1221	-	87.3
4	2°-15'	6.49	-0°-20'	649	-3.76	83.6
5	97°-30'	16.02	0°-00'	1603	-	87.3
6	13°-52'	5.38	-0°-00'	538	-	"
7	107°-45'	15.04	-0°-00'	1505	-	"
8	32°-32'	4.69	-0°-30'	469	-4.08	83.2
9	129°-20'	17.20	0°-00'	1721	-	87.3
10	61°-08'	3.72	-0°-35'	372	-3.79	83.5
11	82°-43'	4.96	-0°-30'	496	-4.32	83.0
12	134°-15'	13.76	0°-00'	1377	-	82.3
13	352°-15'	7.30	-0°-15'	730	-3.21	84.1
14	134°-00'	8.00	-0°-20'	800	-4.64	82.7
15	23°-20'	6.22	+2°-12'	621	+23.88	116.2
45+00	229°-40'	OK				
16	31°-50'	5.83	+1°-20'	583	+13.58	100.9
17	48°-55'	5.19	+3°-32'	517	+31.92	119.2
18	129°-00'	2.90	-0°-55'	290	-4.64	82.7
19	78°-00'	5.36	+2°-56'	535	+27.39	114.7
20	89°-10'	13.24	+1°-18'	1325	+30.05	117.4
21	122°-05'	17.50	+0°-20'	1751	+10.16	97.5

Cont pg. 18

ELEV



Inst. at Sta. 48+00 ELEV.=87.31 HI.=5.0

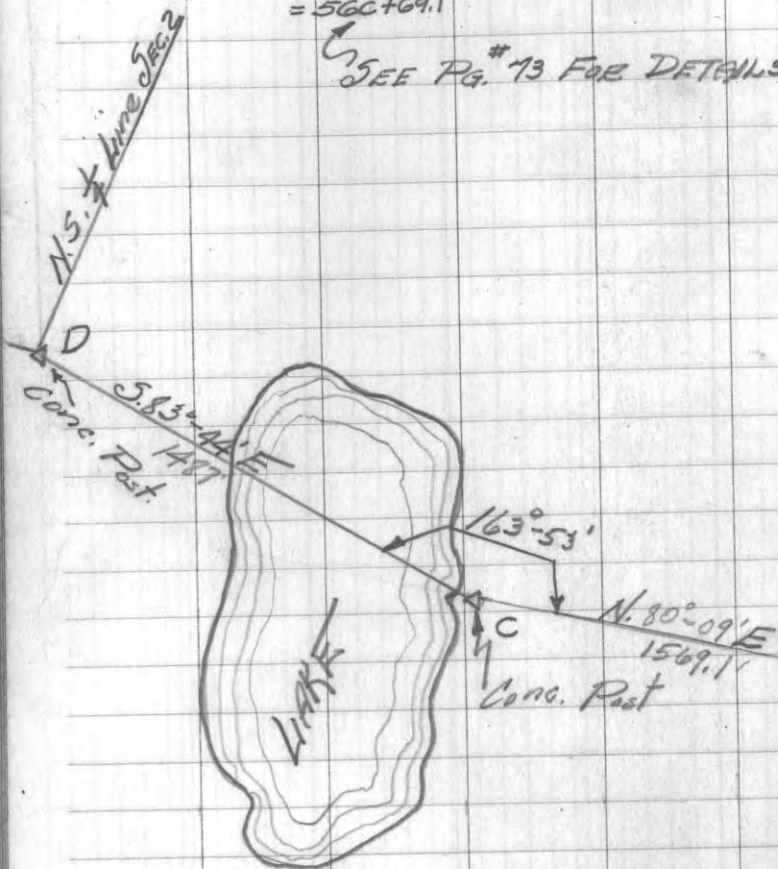
OBJ.	AZ.	RED. INT.	VERT. L.	HOR. DIST.	DIFF. ELEV.	ELEV.
22	122°00'	18.50	+12 36'	1851	+51.62	138.9 Ridge
23	98°32'	17.04	+02 05'	1705	+2.56	89.9 Ground
24	117°35'	18.02	+12 00'	1803	+31.35	118.7 Ground
25	104°20'	17.82	+12 15'	1783	+38.85	126.2 Ridge
26	108°15'	17.20	+12 48'	1721	+54.01	141.3 Ground.
45+00	229°40'	CK.				

PAGES 18-29 BLANK

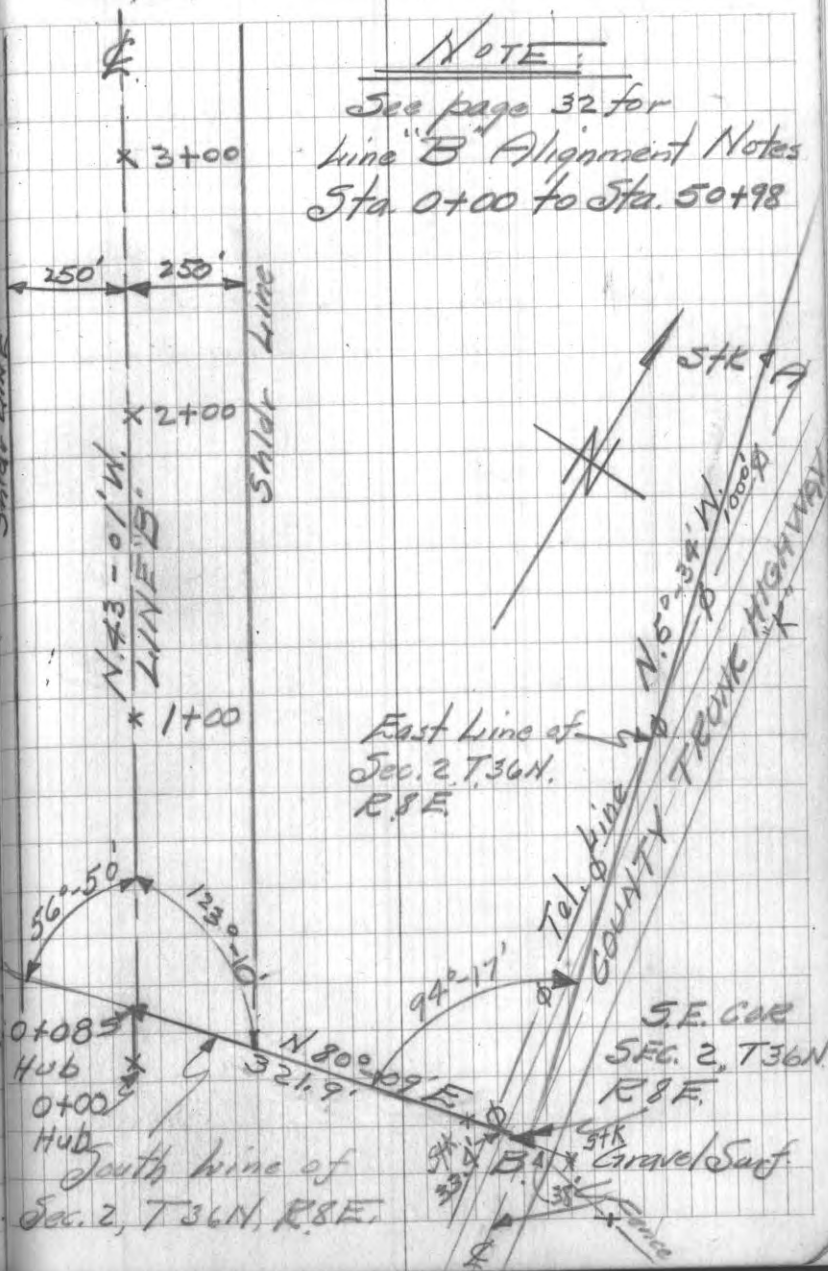
LINE "B" = N.W.-S.E. RUNWAY

B.S.	INST.	F.S.	CLK-WISE HOR. L	HOR. DIST.	TRUE BEAR.
D	C	0+08	163°-53'	1569.1'	N80°-09'E
C	0+08	1+00	56°-50'	92.0'	N.43°-01'W
C	0+08	B	180°-00'	321.9'	N.80°-09'E
C	B	A	94°-17'	1000.0'	N.5°-34'W
B	A	12+36.2 = 566+69.1	180°-00'	236.2'	N.5°-34'W

SEE PG. # 13 FOR DETAILS



TRAVERSE FROM SECTION CORNER TO BEGIN OF LINE "B" 30 3



NOTE

See page 32 for line "B" Alignment Notes Sta. 0+00 to Sta. 50+98

CROSS SECTIONS

G = Ground Surface
M = Bottom Muck.

Sta. 1.06 118.82 117.76 B.M.#8
L R

0+08 $\frac{150}{3.8} \frac{100}{3.3} \frac{G.22M}{6.1} \frac{G.2M}{0.0} \frac{G.50M}{6.0} \frac{G.100M}{9.8} \frac{G.150M}{4.1} \frac{G.200M}{9.0} \frac{G.260M}{5.6} \frac{G.280M}{8.4}$

$\frac{260}{6.7} \frac{200}{4.8} \frac{G.170M}{5.4} \frac{200}{0.0} \frac{200}{4.6} \frac{260}{4.3}$

0+65 $\frac{260}{6.8} \frac{200}{4.6} \frac{137}{3.5} \frac{100}{3.7} \frac{G.4M}{5.6} \frac{G.100M}{0.0} \frac{200}{5.8} \frac{260}{9.0} \frac{260}{3.6} \frac{260}{0.5}$

1+00 $\frac{260}{6.4} \frac{200}{5.4} \frac{100}{5.6} \frac{50}{5.2} \frac{\$}{4.9} \frac{50}{5.1} \frac{100}{5.8} \frac{150}{4.2} \frac{200}{3.3} \frac{260}{1.9}$

0.80 118.56 117.76 B.M.#8

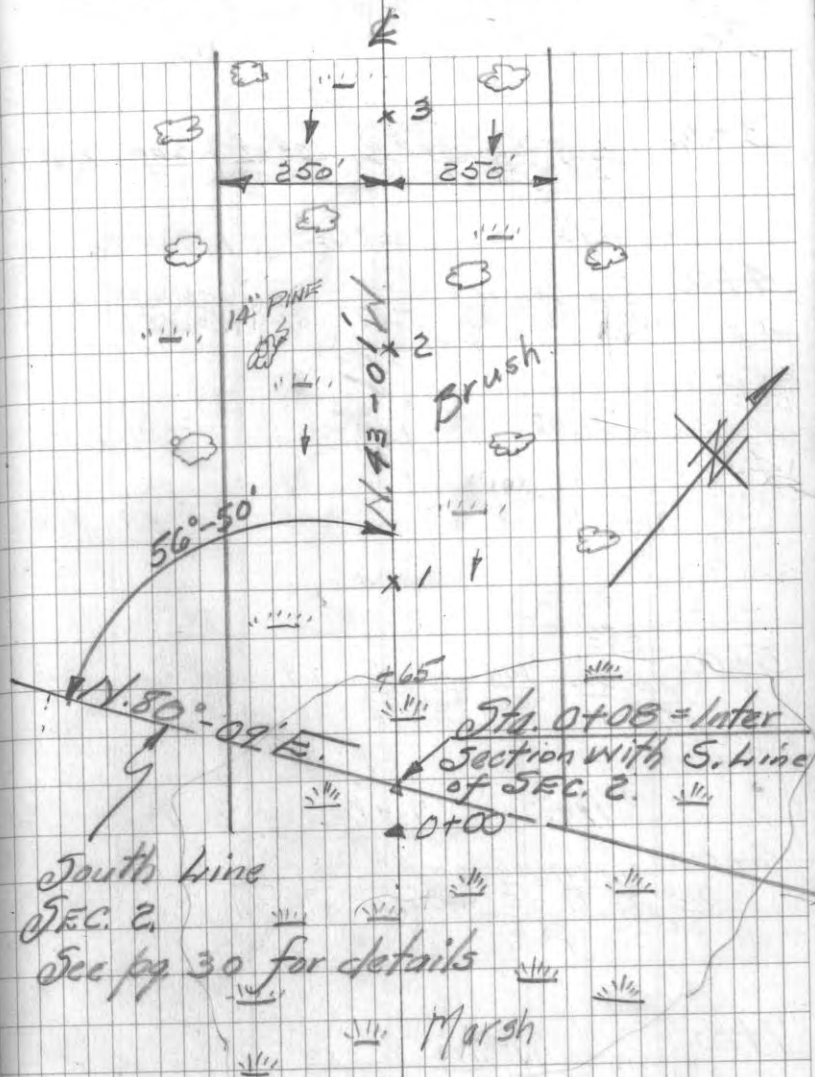
2+00 $\frac{260}{3.7} \frac{200}{5.1} \frac{100}{3.8} \frac{50}{4.0} \frac{\$}{5.2} \frac{50}{4.1} \frac{100}{3.5} \frac{200}{1.0} \frac{260}{0.1}$

+66 $\frac{260}{3.2} \frac{200}{2.4} \frac{100}{2.7} \frac{\$}{0.0} \frac{100}{0.1} \frac{200}{1.1} \frac{260}{0.2}$

5.93 123.69 117.76 B.M.#8

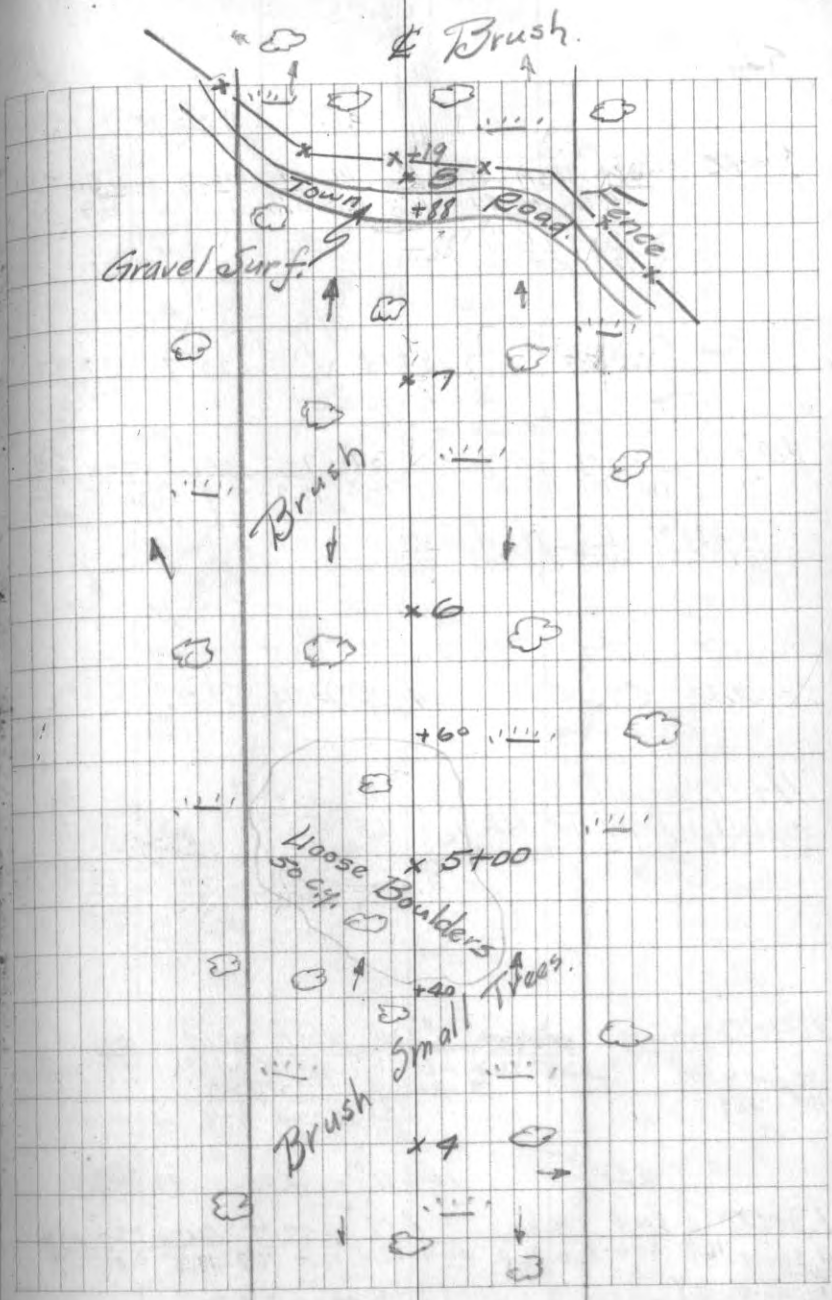
3+00 $\frac{260}{5.1} \frac{200}{4.1} \frac{100}{3.3} \frac{\$}{4.6} \frac{50}{5.2} \frac{100}{6.7} \frac{180}{3.6} \frac{200}{2.2} \frac{260}{3.2}$

LINE "B" SE-N.W. RWY.



See pg 30 for details
Marsh

Sta.	L.									R.
		123.69								
3+42	$\frac{260}{3.8}$	$\frac{200}{5.1}$	$\frac{100}{4.0}$	$\frac{\$}{5.3}$	$\frac{100}{6.5}$	$\frac{176}{1.8}$	$\frac{200}{1.7}$	$\frac{260}{5.3}$		
	6.93	128.63		1.99		121.70				
4+00	$\frac{260}{3.2}$	$\frac{200}{3.6}$	$\frac{100}{4.2}$	$\frac{\$}{4.7}$	$\frac{100}{5.6}$	$\frac{150}{7.0}$	$\frac{200}{8.6}$	$\frac{260}{7.3}$		
	11.08	128.84		117.76		B.M. #8				
4+68	$\frac{260}{0.2}$	$\frac{200}{1.2}$	$\frac{100}{0.1}$	$\frac{\$}{4.0}$	$\frac{100}{5.7}$	$\frac{160}{4.2}$	$\frac{200}{5.9}$	$\frac{260}{5.4}$		
	+5.3	144		100		2.9		100		
5+00	$\frac{260}{0.3}$	$\frac{200}{4.1}$	$\frac{100}{5.3}$	$\frac{\$}{8.8}$	$\frac{2.9}{9.8}$	$\frac{100}{9.6}$	$\frac{200}{8.1}$	$\frac{260}{4.1}$		
	7.89	128.69		8.04		120.80				
6+00	$\frac{260}{3.2}$	$\frac{200}{2.5}$	$\frac{100}{7.7}$	$\frac{\$}{8.5}$	$\frac{60}{10.6}$	$\frac{\$}{8.0}$	$\frac{31}{6.1}$	$\frac{100}{4.4}$	$\frac{200}{9.0}$	
	5.8	141		100		8.3		100		
7+00	$\frac{260}{5.8}$	$\frac{212}{6.2}$	$\frac{200}{9.1}$	$\frac{100}{11.5}$	$\frac{\$}{7.6}$	$\frac{8.3}{6.5}$	$\frac{100}{5.3}$	$\frac{200}{9.2}$	$\frac{260}{9.9}$	
	6.42	122.83		12.28		116.41				
8+00	$\frac{260}{9.5}$	$\frac{500}{12.2}$	$\frac{100}{14.6}$	$\frac{110}{11.7}$	$\frac{\$}{6.9}$	$\frac{39}{5.8}$	$\frac{100}{1.2}$	$\frac{200}{4.8}$	$\frac{260}{2.7}$	
		Town Rd. = 6.8								



Sta.

122.83

9.05 123.78 B.M.#7

9+00	G120M	G63M	31	14	62	100	200	260
	152	0.0	14.7	0.0	8.7	15.8	12.3	5.7
	2.60	2.30	2.00	G177M				
	3.2	9.7	12.7	15.5	0.0			

0.40 123.18 122.78 B.M.#7

10+00	G150M	G10M	4	37	70	100	155	200	+53
	14.1	19.1	14.4	0.0	11.0	16.2	12.3	11.7	31.12
	G260M	G200M	G100M						
	14.6	23.0	14.5	14.5	14.3	26.3			2.2

1.30 124.08 122.78 B.M.#7

T.P. 1.10 111.97 13.21 110.87

T.P. 5.76 104.25 13.48 98.49

11+00	G200M	G100M	G2M	G59M				
G260M	12.1	30.1	11.8	36.4	12.3	16.8	12.3	0.0
12.3	26.8							
					10.9	13.7		+13.4
					7.1	5.3	10.7	2.00
							3.4	7.3
								0.2

12+00	G200M	G100M	G2M	G60M	G91M	100
G260M	11.9	27.3	12.5	26.2	11.8	29.2
11.9	28.9					12.4
						12.4
						11.2
						13.7
						4.2
						2.00
						4.1
						4.6
						7.1

9.59 104.11 4.73 99.52

13+00	G200M	G100M	G2M	G67M	G100M	152
G260M	12.2	35.0	12.0	36.0	12.4	17.4
11.7	36.4					12.4
						16.7
						12.3
						9.0
						2.3
						2.00
						3.1
						8.1



Sta.

104.11

14+00	G200M	G100M	GEM	G40M	G87M	
G260M	12.2	36.6	12.0	36.0	12.1	30.1
						12.0
						24.0
						12.2
						0.0
11.8	35.8					

	4.36	102.55	5.94	98.17	13.17	6
				98.19		

15+00	G200M	G100M	GEM	G22M	50/100	+10.4
G260M	10.8	33.0	10.6	37.2	10.4	17.9
						10.2
						0.0
						2.8
						3.0
						15.4
						2.0
						2.60
10.7	29.1					2.1
						2.5
						4.3

16+00	G200M	G100M	GEM	42	100	+9.3
G260M	14.8	38.0	10.4	0.0	10.4	0.0
					11.1	10.5
						15.9
						2.00
						2.60
10.7	35.4					5.0
						4.2
						7.9

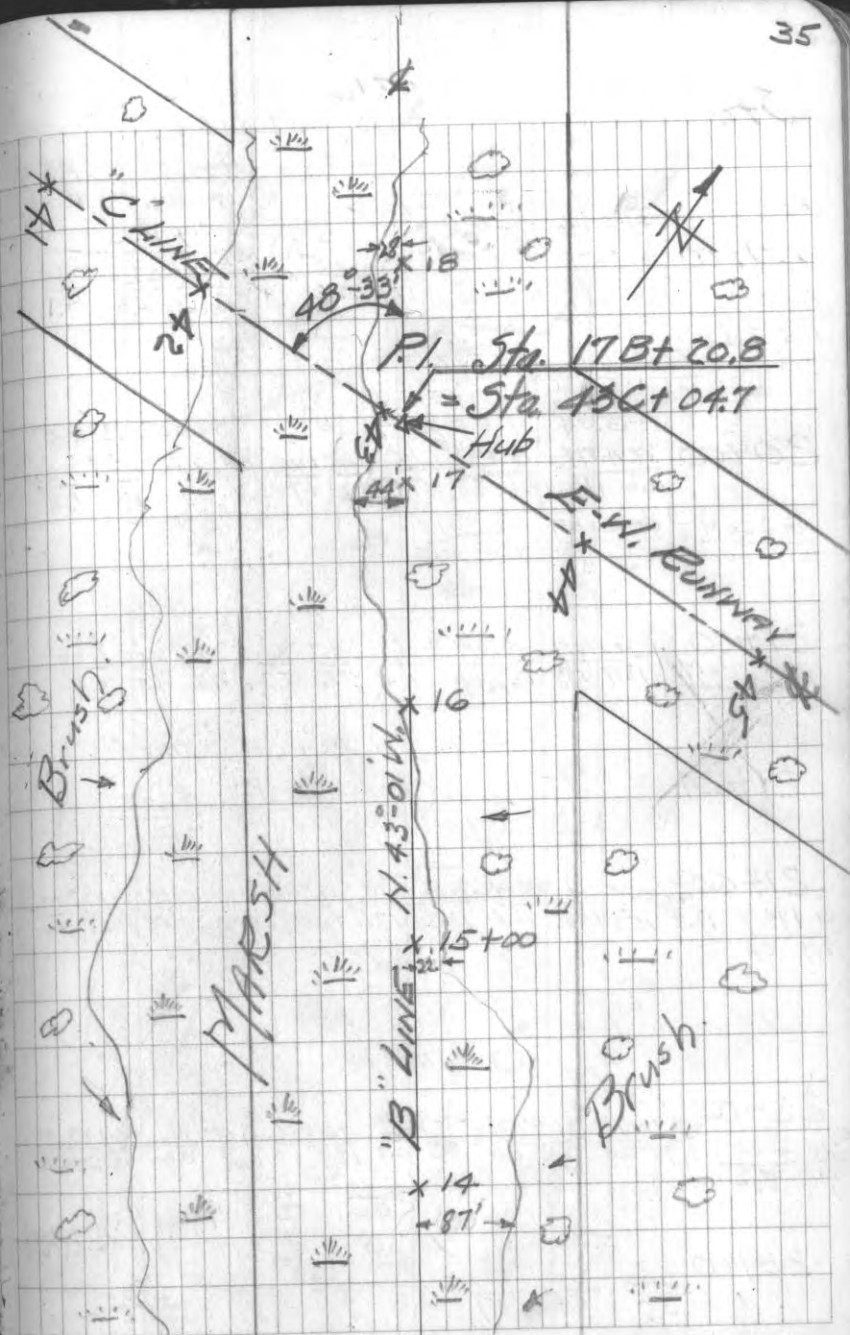
17+00	G130M	G44M	20	5	100	+7.4
G100M	12.7	12.7	10.1	0.0	2.6	9.8
						0.2
						118
						170
						200
						260
10.9	23.4					4.9
						6.7
						5.4
						5.4

G260M	G200M
10.3	32.3
10.6	21.5

5.56	107.16	0.95	101.60
------	--------	------	--------

18+00	G65M	G28M	5	24	100	+11.4
	14.9	20.9	14.9	0.0	6.8	2.6
						4.0
						3.6
						0.2
						0.4

(100)	G200M	G300M	G100M
	15.0	0.0	14.6
			23.6
			15.0
			27.1



Sta. 5.76 107.16
110.73 2.19 104.97
9.20 101.53 B.M.#5
101.56
+ 8.3

19+00 G 30M G 6M \$ 25 100 200 210 260
G 100M 18.4 21.9 18.3 0.0 17.1 12.2 5.4 3.6 2.3 4.1
18.5 39.8

G 260M G 200M
18.2 0.0 18.3 25.5

3.04 104.60 101.56 B.M.#5
20+00 G 45M G 27M \$ 60 100 134 200 227 260
12.6 17.6 12.6 0.0 7.1 4.2 4.7 5.2 0.1 1.0 1.2

G 260M G 200M G 100M
12.7 0.0 12.4 19.5 12.5 20.5

21+00 G 40M G 9M \$ 47 100 142 200 260
G 100M 12.9 15.9 12.7 0.0 11.5 9.9 8.7 4.8 4.5 6.2
12.9 30.3

EDGE MARSH SECTION

21+24 G 6M G 50M G 105M
12.7 0.0 12.8 0.0 12.2 0.0

21+65 G 100M G 28M G 4M G 50M G 100M G 123M
G 199M 12.9 15.2 12.7 16.8 12.8 17.6 12.8 17.5 12.7 15.8 12.7 0.0
12.7 0.0
2.60 2.00 1.67 2.30 2.60
5.9 10.0 6.8 4.5 4.2

104.60

22+00 G 100M G 47M G 8M G 60M G 100M G 122M
260 200 11.9 0.0 12.1 0.0 11.8 0.0 12.7 0.0 12.7 0.0 12.2 0.0
7.9 8.2
200 260
6.0 2.7

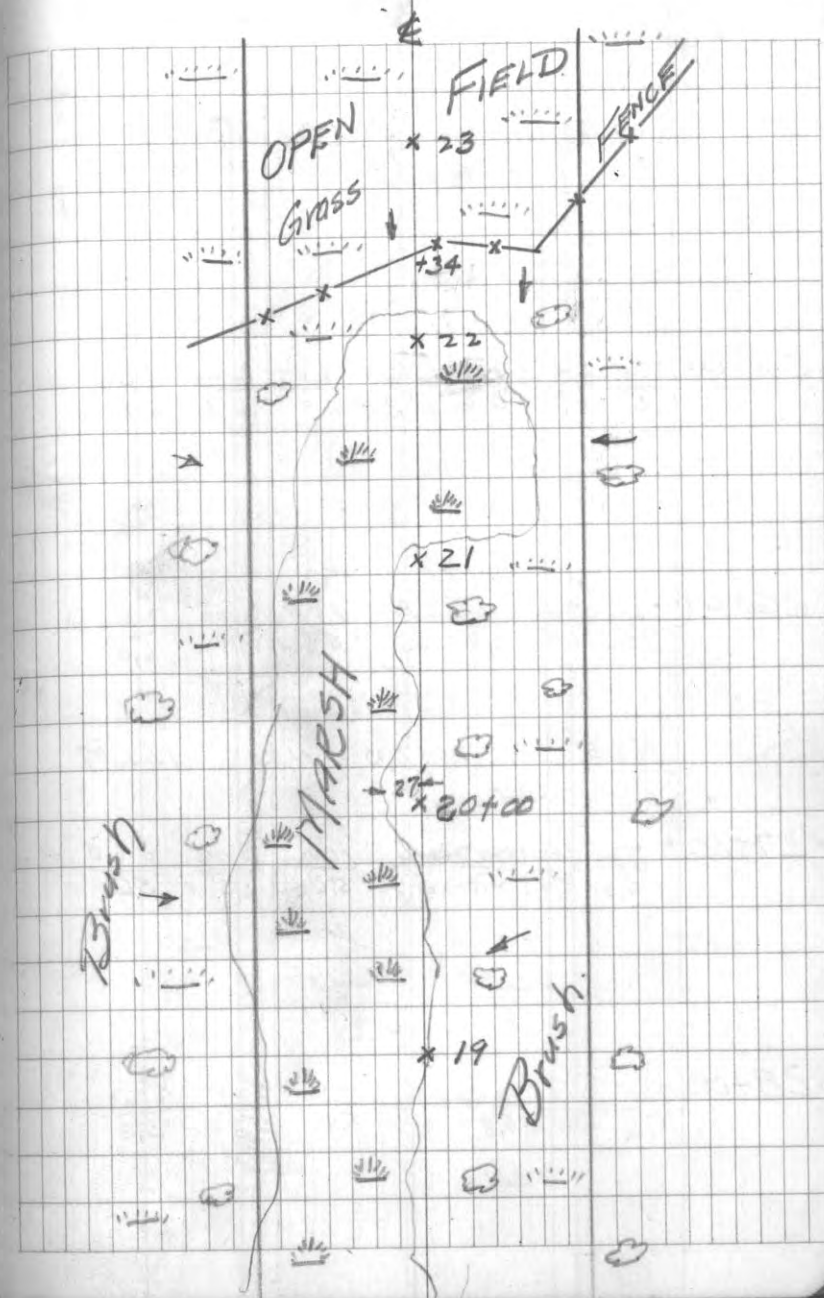
5.82

107.18

3.04

101.56 B.M.#5

23+00 260 200 100 \$ 100 200 260
5.8 5.4 5.1 6.2 7.4 8.6 9.2



Sta.

107.18

24+00 $\frac{260}{6.4}$ $\frac{300}{5.7}$ $\frac{100}{5.6}$ $\frac{100}{5.7}$ $\frac{100}{6.8}$ $\frac{200}{7.5}$ $\frac{260}{7.6}$

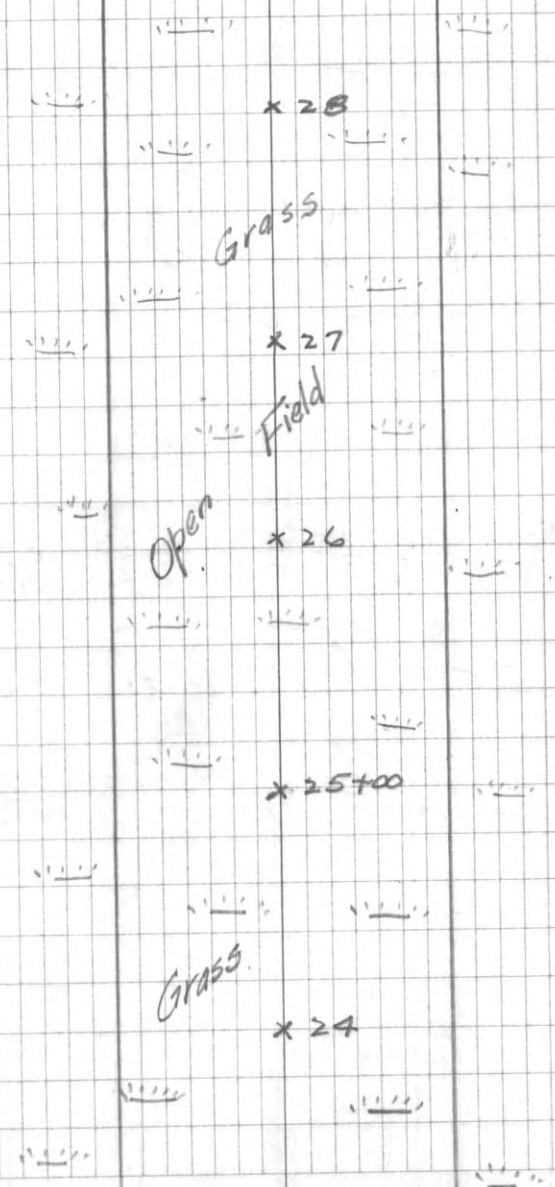
25+00 $\frac{260}{6.2}$ $\frac{300}{6.5}$ $\frac{100}{6.0}$ $\frac{100}{6.0}$ $\frac{100}{6.0}$ $\frac{200}{6.3}$ $\frac{260}{6.7}$

26+00 $\frac{260}{6.2}$ $\frac{300}{6.4}$ $\frac{100}{4.0}$ $\frac{100}{5.8}$ $\frac{100}{5.4}$ $\frac{200}{6.1}$ $\frac{260}{6.0}$

4.65 107.03 4.80 102.38

27+00 $\frac{260}{5.6}$ $\frac{300}{5.9}$ $\frac{100}{5.7}$ $\frac{100}{5.4}$ $\frac{100}{5.6}$ $\frac{200}{5.5}$ $\frac{260}{5.6}$

28+00 $\frac{260}{5.6}$ $\frac{300}{5.6}$ $\frac{100}{5.8}$ $\frac{100}{5.4}$ $\frac{100}{5.4}$ $\frac{200}{5.3}$ $\frac{260}{5.3}$



107.03

Sta

29+00	$\frac{260}{6.2}$	$\frac{200}{5.9}$	$\frac{100}{5.7}$	$\frac{100}{5.3}$	$\frac{200}{5.3}$	$\frac{260}{5.5}$
-------	-------------------	-------------------	-------------------	-------------------	-------------------	-------------------

30+00	$\frac{260}{6.2}$	$\frac{200}{6.0}$	$\frac{100}{5.6}$	$\frac{100}{5.2}$	$\frac{200}{5.3}$	$\frac{260}{5.1}$
-------	-------------------	-------------------	-------------------	-------------------	-------------------	-------------------

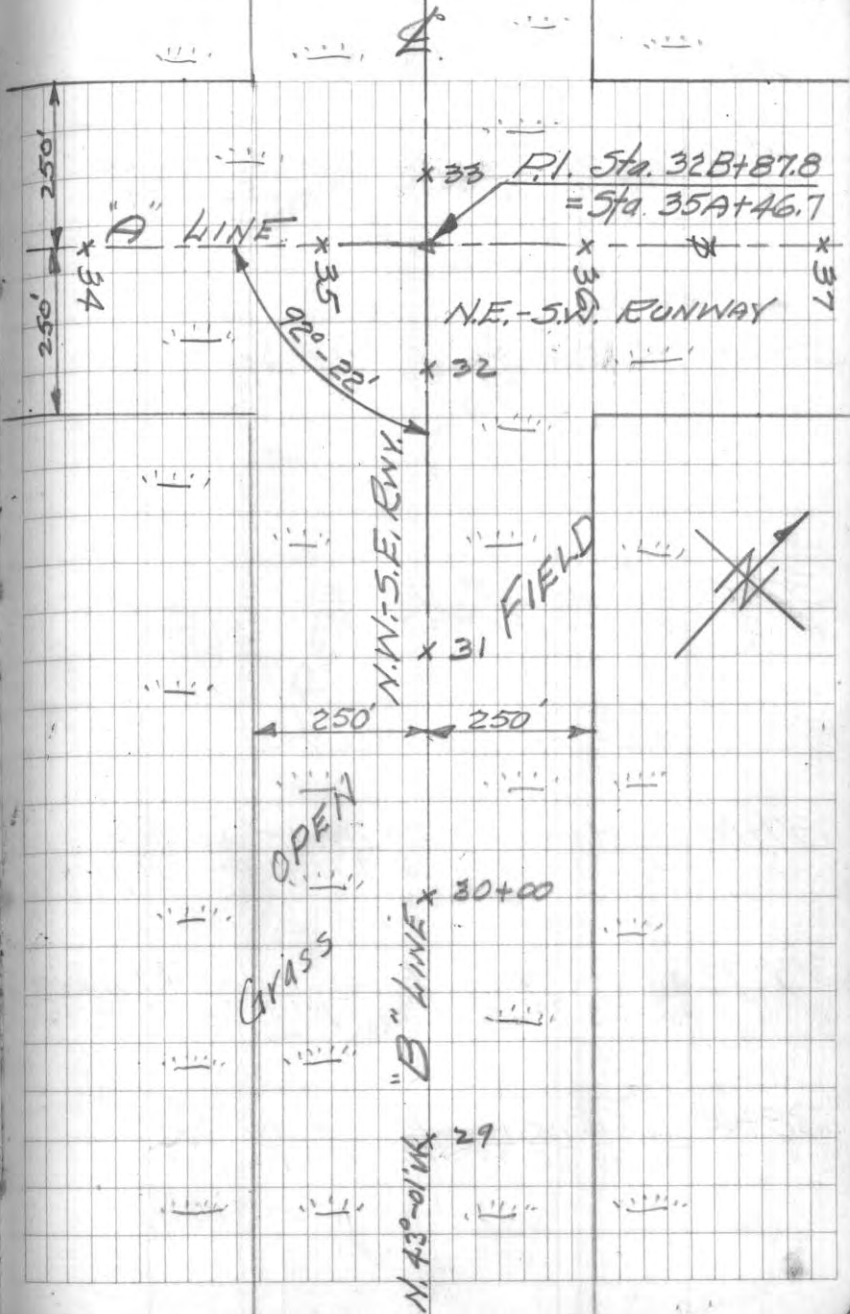
31+00	$\frac{260}{6.7}$	$\frac{200}{5.7}$	$\frac{100}{5.4}$	$\frac{100}{5.5}$	$\frac{200}{5.2}$	$\frac{260}{4.9}$
-------	-------------------	-------------------	-------------------	-------------------	-------------------	-------------------

3.55 106.02 4.56 102.47

32+00	$\frac{260}{5.0}$	$\frac{200}{4.4}$	$\frac{100}{4.2}$	$\frac{100}{4.3}$	$\frac{200}{4.2}$	$\frac{260}{4.5}$
-------	-------------------	-------------------	-------------------	-------------------	-------------------	-------------------

32+87.8 P.I. $\frac{100}{4.2}$

33+00	$\frac{260}{4.4}$	$\frac{200}{4.3}$	$\frac{100}{4.4}$	$\frac{100}{4.1}$	$\frac{200}{4.7}$	$\frac{260}{5.0}$
-------	-------------------	-------------------	-------------------	-------------------	-------------------	-------------------



Sta.

106.02

34+00 $\frac{260}{5.3}$ $\frac{300}{4.9}$ $\frac{100}{5.0}$ $\frac{100}{5.2}$ $\frac{100}{5.3}$ $\frac{200}{5.3}$ $\frac{260}{5.4}$

35+00 $\frac{260}{5.3}$ $\frac{300}{5.1}$ $\frac{100}{5.4}$ $\frac{100}{5.8}$ $\frac{100}{6.3}$ $\frac{200}{7.5}$ $\frac{260}{8.4}$

36+00 $\frac{260}{7.3}$ $\frac{300}{7.3}$ $\frac{100}{5.8}$ $\frac{100}{6.7}$ $\frac{100}{8.6}$ $\frac{200}{14.1}$ $\frac{260}{19.1}$

6.59 103.38 9.23 96.79

37+00 $\frac{260}{2.9}$ $\frac{300}{9.9}$ $\frac{100}{7.0}$ $\frac{100}{7.3}$ $\frac{100}{9.7}$ $\frac{177}{14.1}$ $\frac{200}{16.6}$ $\frac{260}{16.9}$

37+72 $\frac{260}{2.8}$ $\frac{300}{2.7}$ $\frac{138}{3.5}$ $\frac{100}{6.9}$ $\frac{100}{11.4}$ $\frac{60}{12.7}$ $\frac{100}{14.9}$ $\frac{143}{9.2}$ $\frac{187}{11.4}$ $\frac{200}{13.4}$ $\frac{220}{16.5}$

38+00 $\frac{260}{2.8}$ $\frac{300}{2.8}$ $\frac{135}{2.5}$ $\frac{100}{4.5}$ $\frac{100}{7.3}$ $\frac{100}{8.8}$ $\frac{200}{10.2}$ $\frac{260}{14.8}$

Grass

x 38

Draw

x 37

FIELD

x 36

OPEN

x 35+00

$\frac{260}{16.9}$

Grass

x 34

Sta.

103.38

39+00	$\frac{260}{2.8}$	$\frac{200}{2.6}$	$\frac{100}{2.7}$	$\frac{100}{3.2}$	$\frac{200}{2.9}$	$\frac{260}{4.9}$	$\frac{260}{7.6}$
-------	-------------------	-------------------	-------------------	-------------------	-------------------	-------------------	-------------------

40+00	$\frac{260}{2.8}$	$\frac{200}{2.8}$	$\frac{100}{3.0}$	$\frac{100}{3.0}$	$\frac{200}{2.9}$	$\frac{260}{5.1}$	$\frac{260}{8.1}$
-------	-------------------	-------------------	-------------------	-------------------	-------------------	-------------------	-------------------

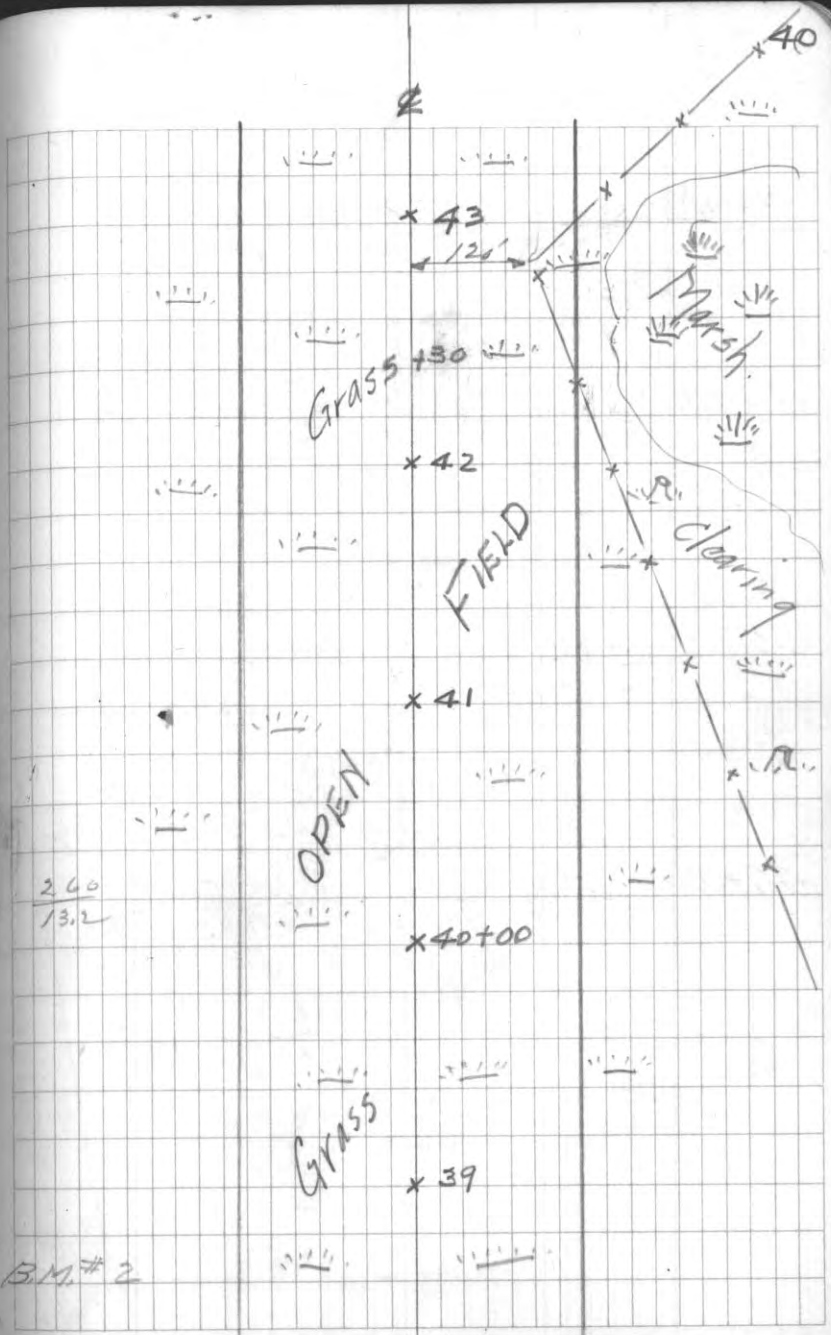
41+00	$\frac{260}{2.8}$	$\frac{200}{3.9}$	$\frac{100}{3.1}$	$\frac{100}{3.1}$	$\frac{163}{4.3}$	$\frac{200}{11.6}$	$\frac{260}{12.0}$
-------	-------------------	-------------------	-------------------	-------------------	-------------------	--------------------	--------------------

4.27 105.30 2.35 101.03

42+00	$\frac{260}{5.3}$	$\frac{200}{5.1}$	$\frac{100}{5.2}$	$\frac{100}{5.0}$	$\frac{137}{8.2}$	$\frac{162}{12.7}$	$\frac{200}{13.5}$
-------	-------------------	-------------------	-------------------	-------------------	-------------------	--------------------	--------------------

43+00	$\frac{260}{5.3}$	$\frac{200}{5.4}$	$\frac{100}{5.3}$	$\frac{100}{12.9}$	$\frac{200}{5.3}$	$\frac{200}{10.8}$	$\frac{260}{13.4}$
-------	-------------------	-------------------	-------------------	--------------------	-------------------	--------------------	--------------------

2.94 105.28 2.94 102.36 102.34 ✓



Sta.

105,28

44+00	$\frac{260}{5.4}$	$\frac{200}{5.3}$	$\frac{100}{5.3}$	$\frac{100}{5.1}$	$\frac{200}{5.2}$	$\frac{260}{5.5}$
-------	-------------------	-------------------	-------------------	-------------------	-------------------	-------------------

45+00	$\frac{260}{5.3}$	$\frac{200}{5.2}$	$\frac{100}{5.3}$	$\frac{100}{5.1}$	$\frac{200}{5.6}$	$\frac{260}{5.3}$
-------	-------------------	-------------------	-------------------	-------------------	-------------------	-------------------

46+00	$\frac{260}{5.6}$	$\frac{200}{5.6}$	$\frac{100}{5.4}$	$\frac{100}{6.4}$	$\frac{200}{6.9}$	$\frac{260}{7.5}$
-------	-------------------	-------------------	-------------------	-------------------	-------------------	-------------------

47+00	4.22	10.79	7.71	9.57				
	$\frac{260}{3.8}$	$\frac{200}{2.8}$	$\frac{100}{3.7}$	$\frac{100}{5.1}$	$\frac{156}{4.8}$	$\frac{200}{5.6}$	$\frac{260}{8.7}$	$\frac{260}{100}$

41



54

101.79

48+00	$\frac{300}{3.6}$	$\frac{100}{3.5}$	$\frac{100}{3.3}$	$\frac{49}{13.0}$	$\frac{4}{13.2}$	$\frac{25}{11.7}$	$\frac{100}{9.7}$	$\frac{138}{12.0}$	$\frac{240}{10.2}$	$\frac{260}{11.0}$
-------	-------------------	-------------------	-------------------	-------------------	------------------	-------------------	-------------------	--------------------	--------------------	--------------------

4.21	93.62	12.38	89.41
------	-------	-------	-------

EDGE MARSH X-SECT

48+47

$\frac{42}{6.8}$	$\frac{97}{4.2}$	$\frac{4112M}{5.2}$	$\frac{4200M}{8.8}$	$\frac{4200M}{0.0}$	$\frac{4200M}{7.3}$	$\frac{4200M}{0.0}$
------------------	------------------	---------------------	---------------------	---------------------	---------------------	---------------------

49+00

$\frac{+4.5}{3.6}$	$\frac{148}{2.0}$	$\frac{100}{0.8}$	$\frac{43}{3.3}$	$\frac{4}{7.5}$	$\frac{39}{5.3}$	$\frac{490M}{4.5}$	$\frac{490M}{9.3}$	$\frac{490M}{0.0}$	$\frac{490M}{9.2}$	$\frac{490M}{15.7}$
--------------------	-------------------	-------------------	------------------	-----------------	------------------	--------------------	--------------------	--------------------	--------------------	---------------------

$\frac{4300M}{9.3}$	$\frac{4260M}{13.5}$	$\frac{4260M}{9.0}$	$\frac{4260M}{0.0}$
---------------------	----------------------	---------------------	---------------------

49+32

$\frac{4100M}{9.5}$	$\frac{450M}{0.0}$	$\frac{450M}{9.4}$	$\frac{450M}{0.0}$	$\frac{450M}{9.1}$	$\frac{450M}{0.0}$	$\frac{450M}{9.3}$	$\frac{450M}{0.0}$	$\frac{450M}{9.2}$	$\frac{450M}{16.3}$
---------------------	--------------------	--------------------	--------------------	--------------------	--------------------	--------------------	--------------------	--------------------	---------------------

$\frac{200}{4.0}$	$\frac{171}{5.0}$	$\frac{4200M}{9.5}$	$\frac{4260M}{13.5}$	$\frac{4260M}{9.5}$	$\frac{4260M}{11.5}$
-------------------	-------------------	---------------------	----------------------	---------------------	----------------------

50+00

$\frac{4120M}{9.5}$	$\frac{4100M}{11.5}$	$\frac{450M}{9.5}$	$\frac{450M}{15.9}$	$\frac{450M}{9.2}$	$\frac{450M}{17.6}$	$\frac{4100M}{7.0}$	$\frac{4100M}{15.0}$	$\frac{4200M}{9.3}$	$\frac{4200M}{18.3}$
---------------------	----------------------	--------------------	---------------------	--------------------	---------------------	---------------------	----------------------	---------------------	----------------------

+5.4

$\frac{260}{2.2}$	$\frac{200}{0.2}$	$\frac{4186M}{9.4}$	$\frac{4186M}{0.0}$
-------------------	-------------------	---------------------	---------------------

9.7% 8386 Top H₂O

51+00

 $\frac{4}{9.4}$

LAKE

42

*53+00

4.

LIONG LAKE

*52

+15 LAKE SHORE LINE

 $\frac{260}{6.2}$

*51

Swamp

Hub *50+00

+32

Proose's
Butchers
*49

Brush

+47

 $\frac{4260M}{9.5}$ 14.0

Grass

*48

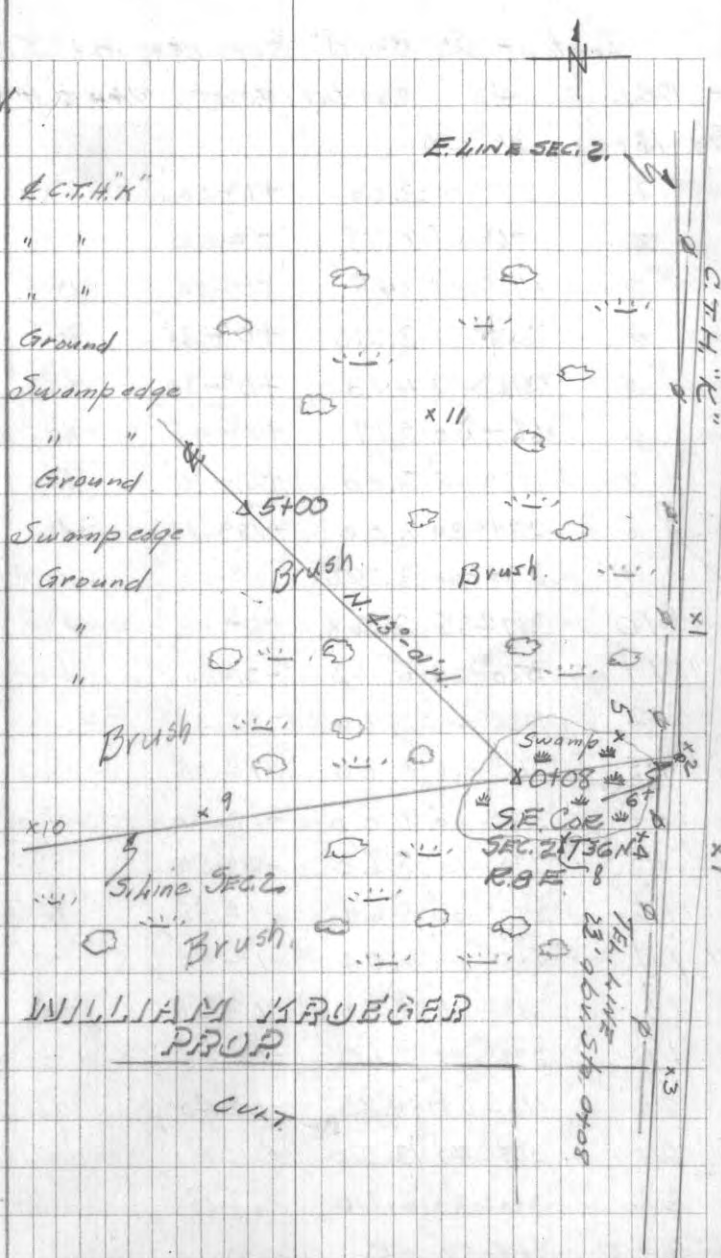
N. 43° 01' W

TOPOG. DETAILS LINE "B"

Inst. at Sta. 0+08 ELEV.=112.82 H.I.=5.2

OBJ.	AZ.	ROD INT.	VERT. L.	HOR. DIST.	DIFF. EL.	ELEV.
Sta. 5+00	316°-59'					
1	62°15'	3.58	+1°25'	358	121.7	
2	80°10'	3.24	+1°30'	324	121.3	
3	152°25'	7.20	0°00'	720	117.8	
4	130°00'	3.99	+1°00'	399	119.8	
5	14°45'	1.26	+0°45'	126	114.5	
6	72°30'	2.87	+1°00'	287	119.8	
7	94°00'	3.42	+2°25'	342	127.2	
8	137°00'	2.92	+0°35'	292	115.8	
9	259°45'	2.76	-0°15'	276	111.7	
10	260°00'	5.44	-1°00'	544	103.4	
11	14°10'	4.71	+2°55'	471	136.8	

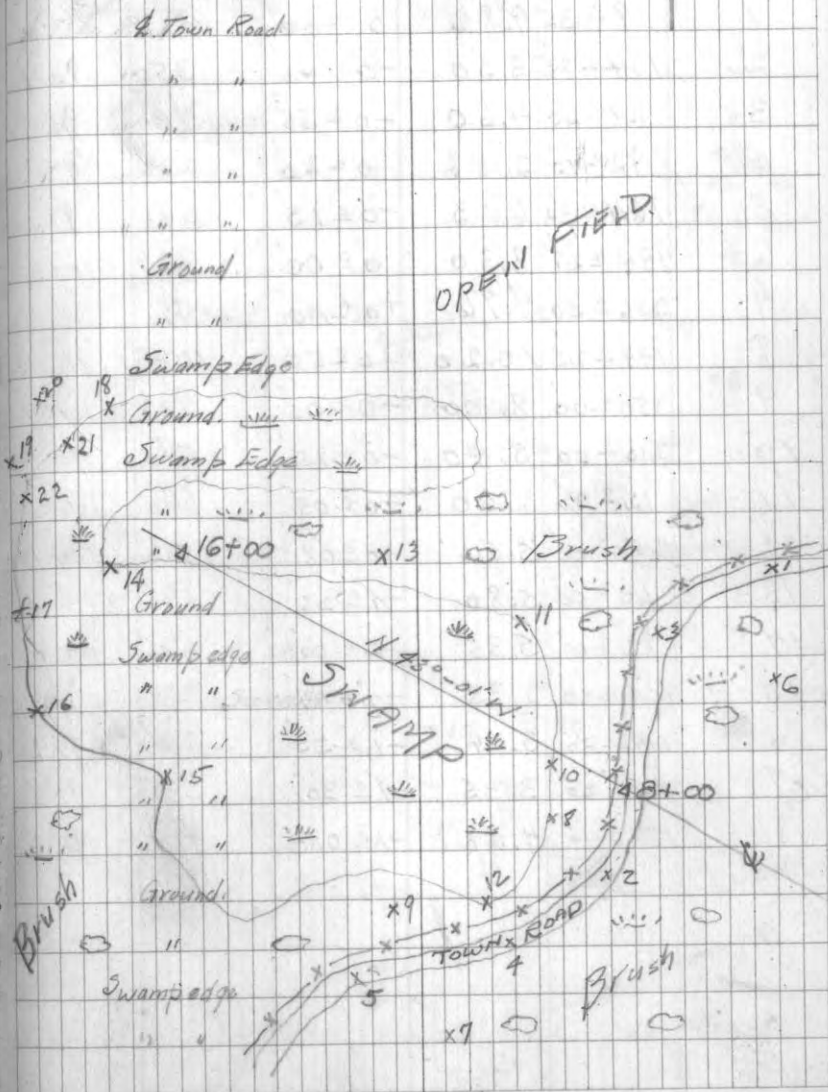
ELEV.



Inst. at Sta 8+00 ELEV=115.93 H.I.=5.0

OBJ.	AZ.	RED INT.	VERT. L.	HOR. DIST.	DIFF. E.L.
Sta. 16+00	316°-59'				
1	27°-00'	3.00	+1°-30'	300	123.8
2	196°-28'	0.98	0°-00'	98	115.9
3	17°-08'	1.49	+1°-50'	149	120.7
4	215°-32'	3.20	+0°-35'	320	119.2
5	216°-43'	4.93	+0°-30'	493	120.2
6	68°-00'	5.17	+1°-45'	517	131.7
7	185°-45'	3.00	+2°-10'	300	127.3
8	284°-30'	1.00	-13°-12'	100	93.7
9	238°-00'	3.32	0°-00'	332	115.9
10	317°-35'	2.28	-6°-16'	228	91.6
11	320°-20'	6.22	-2°-12'	622	92.1
12	256°-05'	2.60	-5°-35'	260	90.8
13	316°-00'	9.00	-1°-05'	900	98.9
14	314°-00'	9.00	-1°-40'	900	89.7
15	270°-10'	5.60	-2°-50'	560	88.2
16	270°-30'	9.24	-1°-55'	924	85.1
17	285°-00'	6.04	-1°-40'	604	98.4
18	313°-34'	14.00	-1°-05'	1401	89.5
19	272°-55'	7.60	-1°-00'	760	102.7
20	313°-09'	14.80	-0°-40'	1481	98.8
21	305°-40'	13.20	-1°-15'	1321	87.2
22	300°-30'	6.60	-1°-18'	660	101.0
16+00	316°-59' CK				

ELEV.



Inst. at Sta 24+00 ELEV. = 101.28 H.I. = 5.1

OBV.	AZ.	POD. INT.	VERT. I.	HOR. DIST	DIFF. EL.	ELEV.
Sta 30+00	316°-59'					
1	9°-35'	9.82	0°-00'	982	101.3	
2	184°-25'	3.50	-0°-45'	350	96.7	
3	28°-20'	4.60	-0°-55'	460	93.9	
4	92°-40'	2.56	0°-40'	256	98.3	
5	164°-30'	6.13	-0°-15'	613	98.6	
6	194°-22'	8.30	0°-00'	830	101.28	
7	206°-50'	9.76	+0°-00'	976	"	
8	199°-25'	10.20	+0°-50'	1021	116.1	
9	350°-00'	8.00	-0°-05'	800	100.1	
10	210°-00'	5.40	-0°-15'	540	98.9	
11	12°-32'	6.60	+0°-05'	660	102.3	
12	250°-00'	5.56	+0°-08'	556	102.6	
13	60°-00'	5.80	+1°-25'	580	115.6 ✓	
14	82°-00'	5.35	-2°-00'	535	82.6 ✓	
15	105°-00'	2.35	-2°-04'	235	97.8	
16	119°-30'	3.04	-1°-35'	304	92.9	
17	142°-20'	3.35	-1°-30'	335	92.5	
18	175°-45'	4.08	-1°-05'	408	93.6	

ELEV.

Fence Cor.

" "

Ground

Fence Cor.

" "

" "

Ground

" "

" "

" "

" "

" "

" "

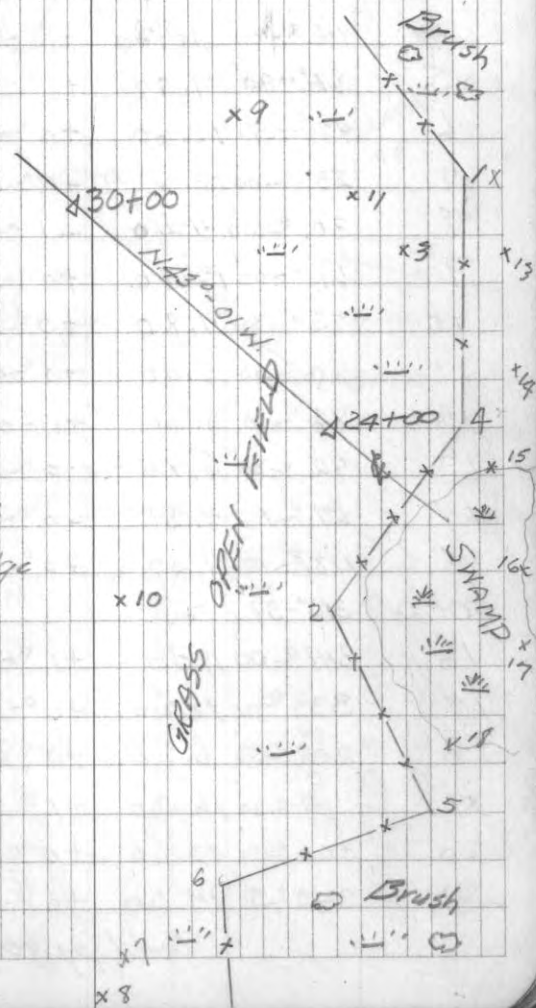
" " 12'

Swamp edge

" "

" "

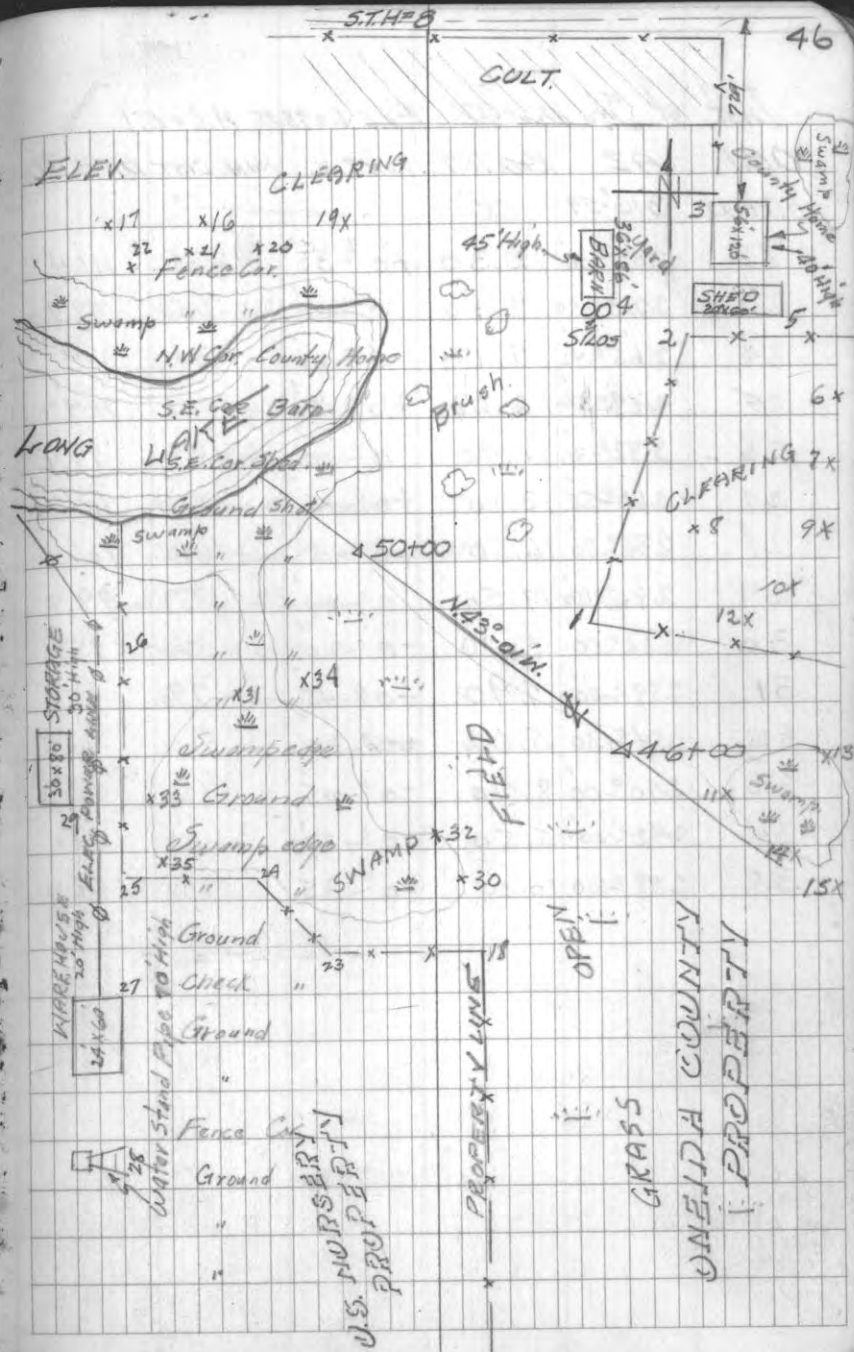
" "



Inst at Sta. 46+00 ELEV=98.88 H.I.=5.1

Obs.	AZ.	ROD INT.	VERT. L.	HOR. DIST.	DIFF. ELEV.
50+00	316°-59'				
1	13°-28'	2.52	-1°-20'	252	93.0
2	17°-30'	8.60	+1°-00'	860	113.8
3	18°-50'	12.00	+1°-18'	1201	126.1
4	14°-40'	9.72	+1°-00'	972	115.8
5	24°-00'	9.70	+1°-05'	970	117.2
6	47°-30'	15.60	+0°-35'	1561	114.8
7	53°-00'	13.64	+0°-00'	1365	98.9
8	30°-00'	4.40	-1°-05'	440	90.6
9	61°-00'	12.80	+0°-50'	1281	117.4
10	73°-30'	11.80	+0°-30'	1181	109.2
11	60°-30'	5.00	-0°-45'	500	92.3
12	86°-10'	8.60	+1°-00'	860	113.8
13	92°-00'	6.80	-0°-15'	680	95.9
14	67°-15'	4.26	-0°-30'	426	95.2
15	118°-15'	7.30	+0°-30'	730	105.2
50+00	316°-59'	CK.			
16	341°-00'	19.00	+1°-30'	1901	148.7
17	333°-00'	18.20	+1°-10'	1821	136.0
18	202°-50'	6.58	+0°-15'	658	101.4
19	4°-30'	16.20	+1°-05'	1621	121.5
20	300°-51'	13.60	+0°-25'	1361	108.9
21	342°-30'	14.20	+0°-12'	1421	103.9

Cont'd pg 49.



Inst. at Sta 46+00 ELEV. = 98.88 H.I. = 5.1

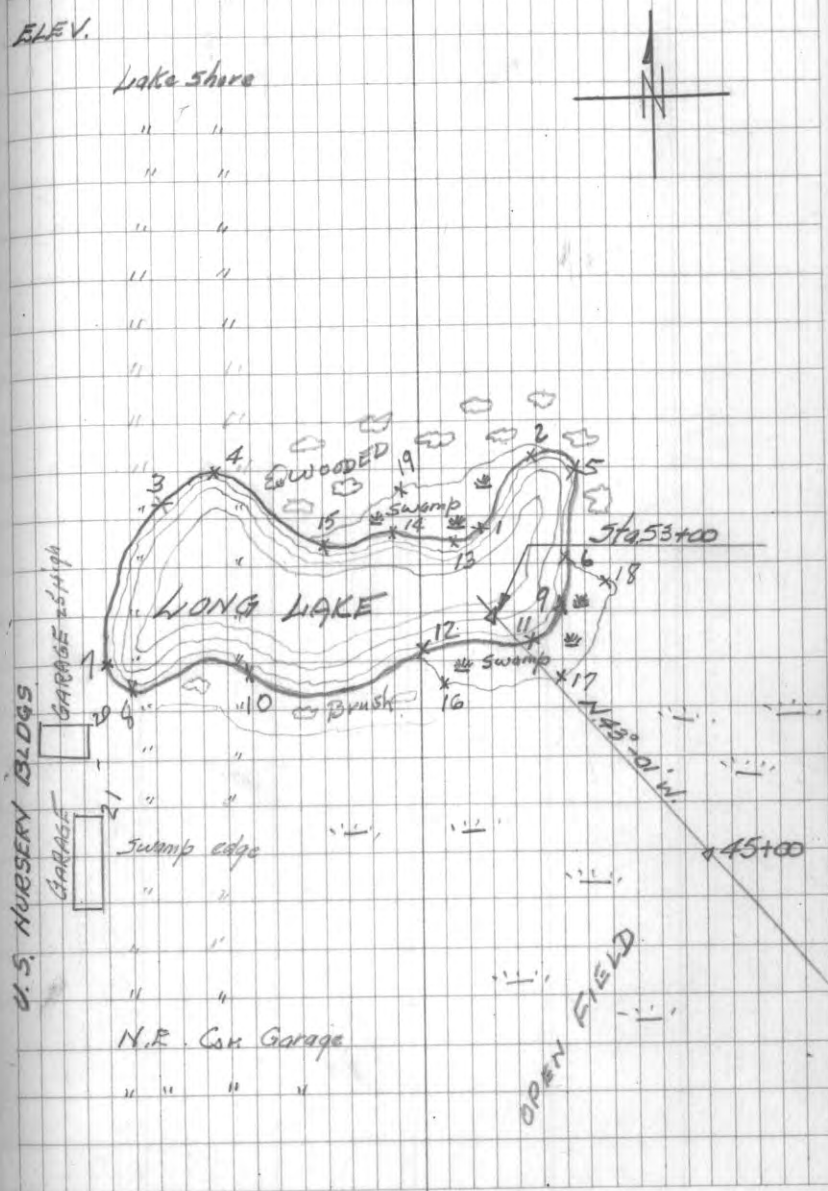
OBL.	AZ.	RED. INT.	VERT. L.	HOR. DIST.	DIFF. EL.	ELEV.
50+00	316°59'	CK				
22	339°00'	12.30	+0°35'	1231	111.4	Ground
23	220°00'	7.10	0°00'	710	98.9	Fence Cor
24	265°45'	7.14	0°00'	714	"	" "
25	267°50'	12.20	+0°15'	1221	104.3	" "
26	283°30'	11.70	0°00'	1171	99.9	" line
27	260°55'	13.10	+0°15'	1311	104.6	N.E. Cor. Warehouse
28	236°30'	16.60	+0°15'	1661	106.2	Ctr. Stand Pipe (Ground)
29	295°30'	19.50	0°00'	1951	98.9	S.E. Cor. Storage
30	222°00'	5.40	-0°20'	540	95.8	Swamp edge
31	289°00'	7.90	-0°45'	790	88.5	" "
32	254°30'	5.02	-0°30'	502	94.5	" "
33	270°00'	8.20	-0°25'	820	97.9	" "
34	292°00'	5.50	-0°30'	550	94.1	Ground
35	258°20'	10.00	-0°35'	1001	88.7	Swamp edge

Inst. at Sta. 53+00 ELEV.=83.86 H.I.= 5.2

Obs.	AZ.	ROD INT.	VERT. L.	Hor. DIST.	DIFF. ELEV.
Sta. 45+00	133°-01'				
1	17°-45'	3.30	0°-00'	330	83.9
2	20°-45'	6.90	0°-00'	690	"
3	301°-05'	11.20	0°-00'	1121	"
4	306°-00'	12.50	0°-00'	1251	"
5	36°-00'	6.25	0°-00'	625	"
6	56°-30'	3.27	0°-00'	327	"
7	288°-00'	10.40	0°-00'	1041	"
8	278°-00'	6.27	0°-00'	627	"
9	83°-30'	3.33	0°-00'	333	"
10	272°-30'	4.30	0°-00'	430	"
11	120°-30'	2.35	0°-00'	235	"
12	267°-50'	1.23	0°-00'	123	"
13	11°-45'	2.88	0°-00'	288	"
14	310°-00'	3.48	0°-00'	348	"
15	300°-30'	5.00	0°-00'	500	"
16	195°-30'	1.50	0°-00'	150	"
17	133°-40'	3.68	0°-00'	368	"
18	96°-45'	4.40	0°-00'	440	"
19	133°-15'	6.65	0°-00'	665	"
20	288°-00'	14.60	+0°-10'	1461	88.1
21	285°-10'	13.60	+0°-10'	1361	87.8
Sta. 45+00	133°-01'	CK			

ELEV.

Lake shore



PAGES 50-59 BLANK

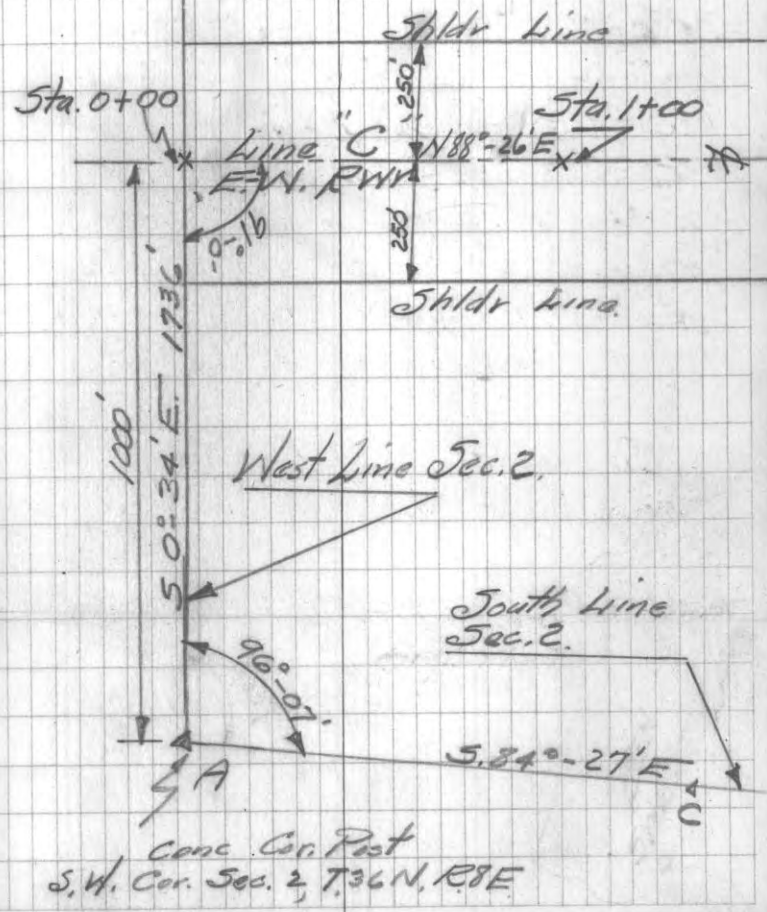
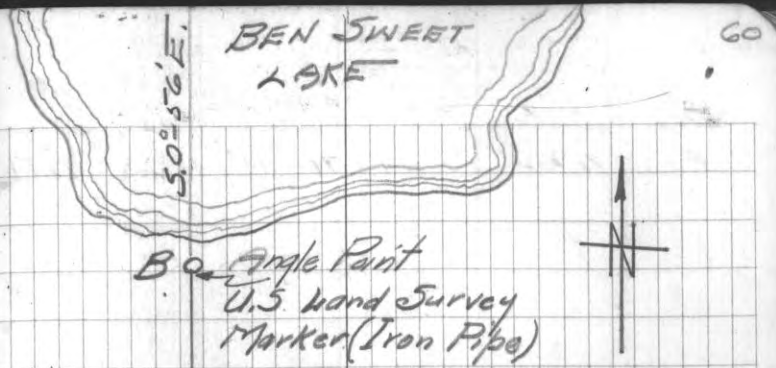
LINE "C" E-W. RUNWAY

B.S.	INST.	F.S.	ANTI CLOCK WISE L	HOR. DIST.	TRUE BEAR
C	A	0+00	96°-07'	1000'	N0°-34' W
A	0+00	1+00	91°-00'	100'	N88°-26' E

NOTE:

Ran line A-B offset 10' East of original line. Both points A & B located.
 Sta. 0+00 the beginning of "C" Line (East-West Runway) established on Original line A-B. 1000' N. 0°-34' W. on line A-B from Cor. Post at SW. Cor. Sec. 2, T. 36 N., R. 8 E.

See pg. 62 for Line "C" Alignment Notes.



Sta.

112.29

4+00	$\frac{260}{0.1}$	$\frac{200}{1.0}$	$\frac{100}{2.3}$	$\frac{\$}{29}$	$\frac{58}{6.0}$	$\frac{100}{9.0}$	$\frac{151}{11.1}$	$\frac{200}{14.1}$	$\frac{260}{14.2}$
------	-------------------	-------------------	-------------------	-----------------	------------------	-------------------	--------------------	--------------------	--------------------

6.35	116.59	205	110.24
------	--------	-----	--------

5+00	$\frac{260}{5.3}$	$\frac{200}{4.6}$	$\frac{100}{8.1}$	$\frac{71}{8.5}$	$\frac{\$}{5.5}$	$\frac{100}{6.0}$	$\frac{160}{8.1}$	$\frac{200}{12.1}$	$\frac{260}{12.0}$
------	-------------------	-------------------	-------------------	------------------	------------------	-------------------	-------------------	--------------------	--------------------

6+00	$\frac{260}{12.3}$	$\frac{200}{4.5}$	$\frac{100}{7.9}$	$\frac{42}{11.1}$	$\frac{\$}{6.8}$	$\frac{64}{5.1}$	$\frac{100}{7.8}$	$\frac{152}{4.5}$	$\frac{200}{7.0}$	$\frac{260}{13.9}$	$\frac{260}{20.8}$
------	--------------------	-------------------	-------------------	-------------------	------------------	------------------	-------------------	-------------------	-------------------	--------------------	--------------------

3.73	113.92	6.40	110.19
------	--------	------	--------

7+00	$\frac{260}{15.6}$	$\frac{200}{10.9}$	$\frac{100}{8.3}$	$\frac{100}{5.4}$	$\frac{\$}{4.6}$	$\frac{29}{3.0}$	$\frac{100}{4.8}$	$\frac{200}{6.7}$	$\frac{260}{11.4}$
------	--------------------	--------------------	-------------------	-------------------	------------------	------------------	-------------------	-------------------	--------------------

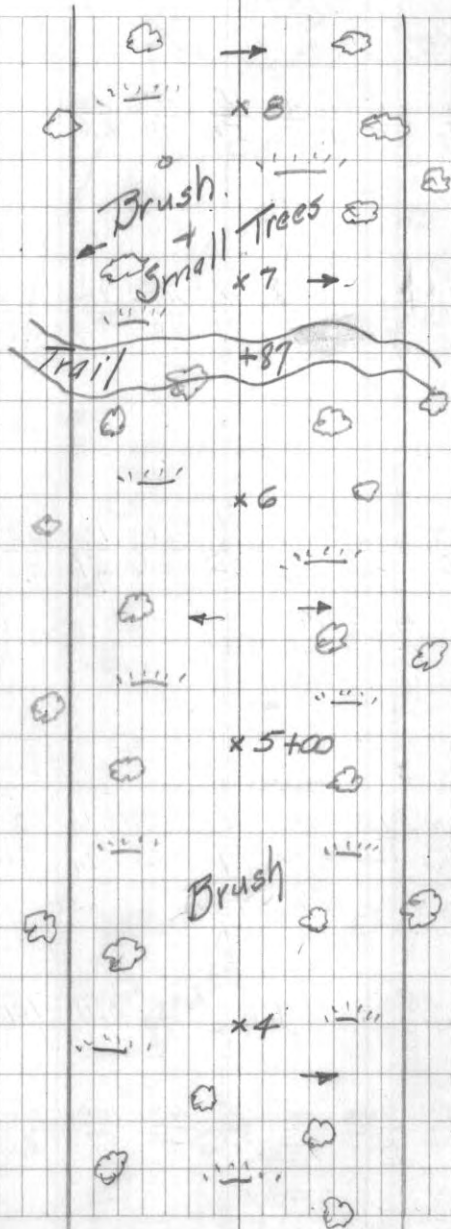
8+00	$\frac{260}{13.4}$	$\frac{200}{10.9}$	$\frac{149}{13.1}$	$\frac{100}{11.3}$	$\frac{\$}{10.1}$	$\frac{50}{10.0}$	$\frac{100}{6.7}$	$\frac{157}{6.6}$	$\frac{200}{6.7}$
------	--------------------	--------------------	--------------------	--------------------	-------------------	-------------------	-------------------	-------------------	-------------------

5.37 108.55 B.M.#11

108.59

63

£



260	11.1
-----	------

5/2. 3.17 111.76 108.59 B.M.# 11
 7.51 106.91 12.36 99.40

9+00 $\frac{260}{5.8} \frac{200}{6.8} \frac{100}{8.4} \frac{42}{5.2} \frac{4}{5.4} \frac{47}{7.4} \frac{100}{5.6} \frac{170}{3.9} \frac{200}{5.4} \frac{260}{11.1}$

10+00 $\frac{300}{8.0} \frac{140}{7.9} \frac{100}{8.4} \frac{52}{9.1} \frac{4}{8.1} \frac{40}{9.0} \frac{100}{10.9} \frac{200}{5.6} \frac{260}{7.8}$
 G 260M 19.9 9.0

11+00 $\frac{300}{19.3} \frac{140}{8.0} \frac{100}{7.9} \frac{52}{9.1} \frac{4}{8.1} \frac{40}{9.0} \frac{100}{10.9} \frac{200}{5.6} \frac{260}{7.8}$
 G 260M 19.5 28.7
 G 230M 19.4 26.2

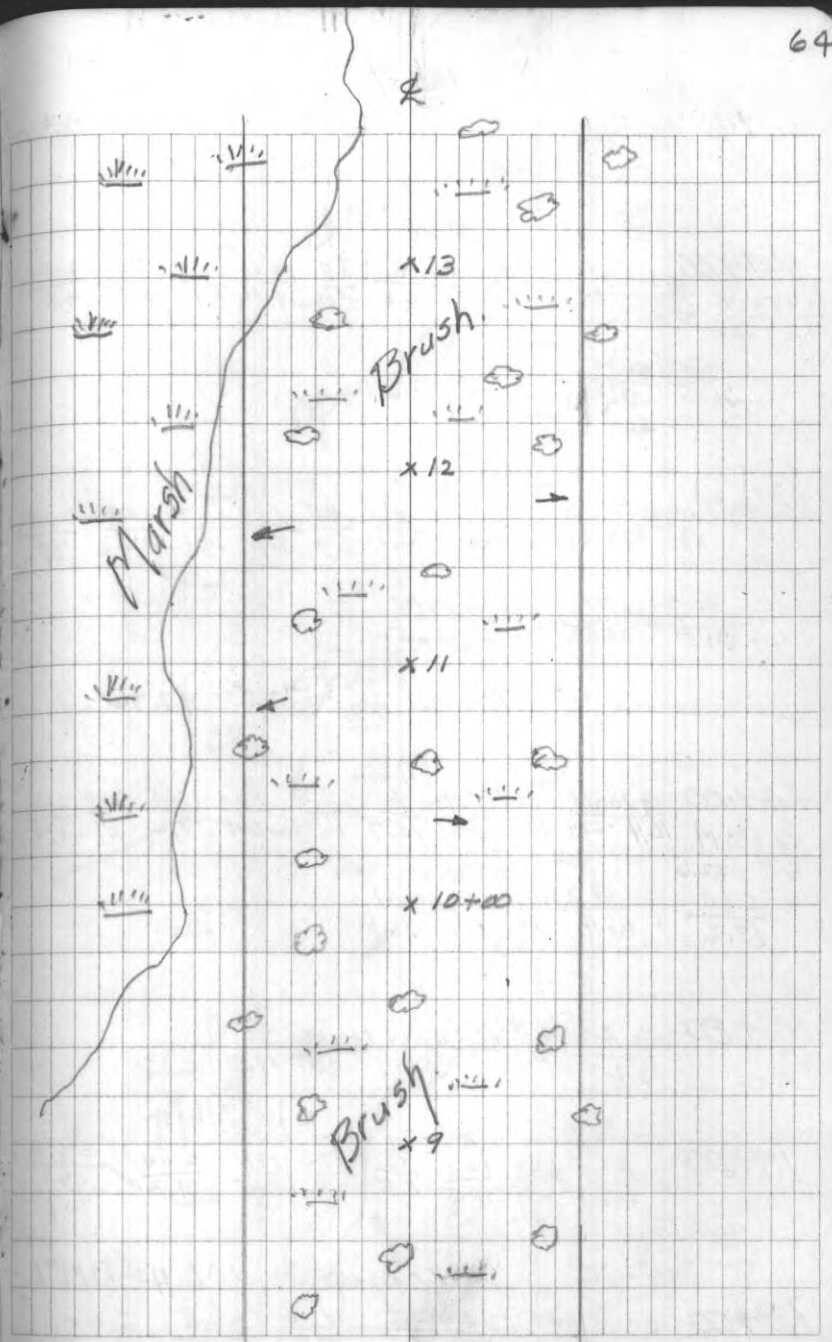
12+00 $\frac{300}{22.4} \frac{140}{12.2} \frac{100}{10.6} \frac{4}{5.9} \frac{40}{7.8} \frac{100}{9.1} \frac{200}{12.4} \frac{260}{13.8}$

G 260M 23.5 31.4
 G 230M 23.4 27.9

2.91 104.71 5.11 101.80

13+00 $\frac{300}{20.6} \frac{140}{15.4} \frac{100}{10.2} \frac{4}{5.0} \frac{47}{2.5} \frac{100}{5.9} \frac{200}{8.6} \frac{260}{10.2}$

G 260M 20.7 31.7
 G 200M 20.4 26.5



Sta.

10471

2.88 101.83 B.M.#10
101.84

14+00	G 112M	100	20	50	100	145	200	260
G 150M	20.3	0.0	16.5	12.2	9.0	6.2	8.5	14.5
20.6	27.1							

G 260M	G 200M
20.4	36.4
20.6	32.6

15+00	G 100M	G 67M	18	4	48	100	150	200	260
G 150M	26.5	27.5	21.1	2.0	12.1	70.1	6.9	8.9	14.1
									12.3
									78

G 260M	G 200M
31.5	25.5
21.6	26.5

2.94 100.40 7.25 97.46

16+00	G 100M	G 65M	4	52	100	145	200	260
G 150M	16.4	22.4	16.1	0.0	15.7	14.6	6.4	3.2
16.5	22.6							4.7
								3.4

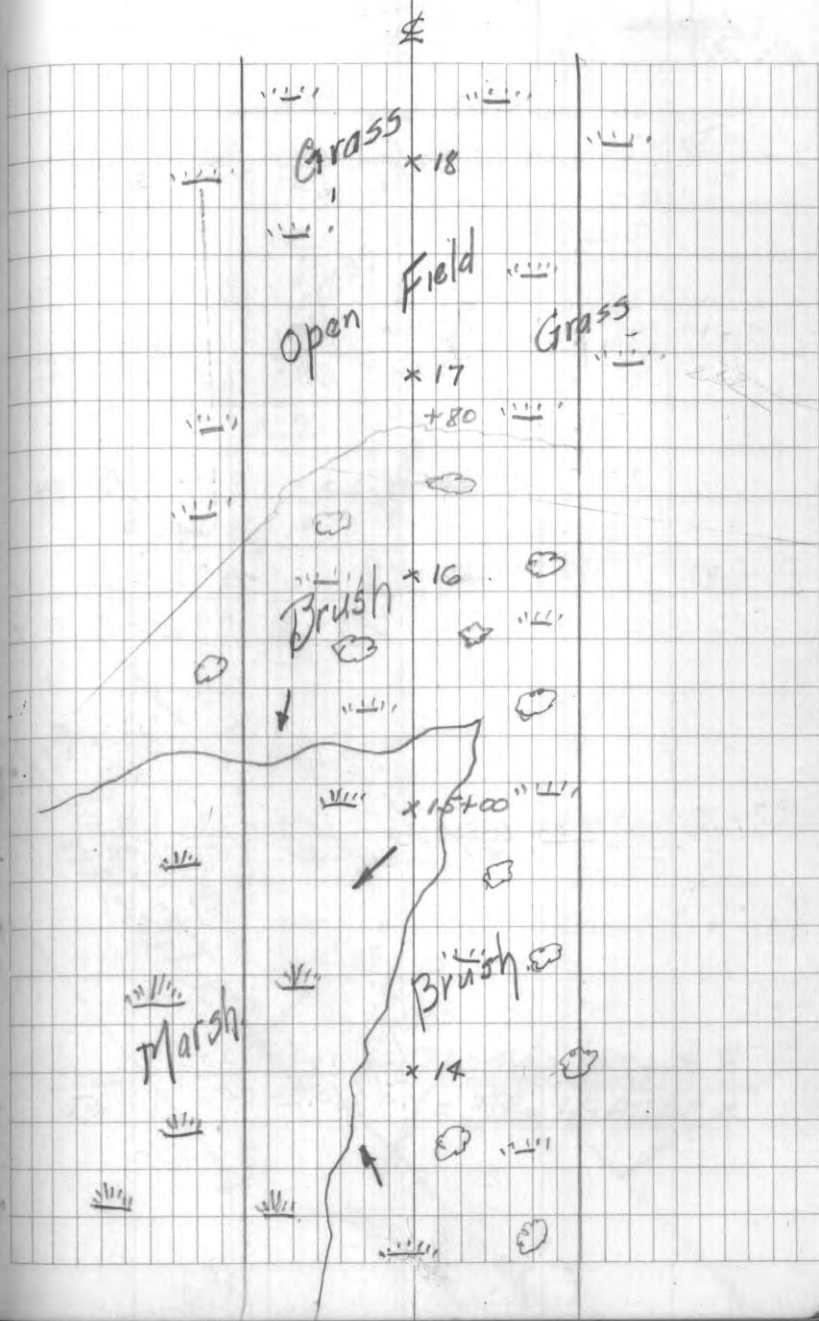
260	G 250M	G 200M
13.2	16.4	0.0
	16.5	20.5

16+80	G 200M	G 164M	G 100M	4
	12.2	0.0	13.1	0.0
			15.1	0.0
				11.0

17+00	260	200	100	4	82	100	200	+5.3
	1.7	2.5	10.5	11.5	9.8	8.5	1.3	2.60
								2.7

0.02 106.42 106.40 B.M.#1

18+00	260	200	100	4	100	200	260
	8.7	8.3	5.5	7.5	8.8	6.7	4.4



Sta.

106.42

19+00 $\frac{260}{6.6}$ $\frac{200}{7.0}$ $\frac{100}{10.5}$ $\frac{100}{9.6}$ $\frac{100}{6.5}$ $\frac{200}{5.5}$ $\frac{260}{7.4}$

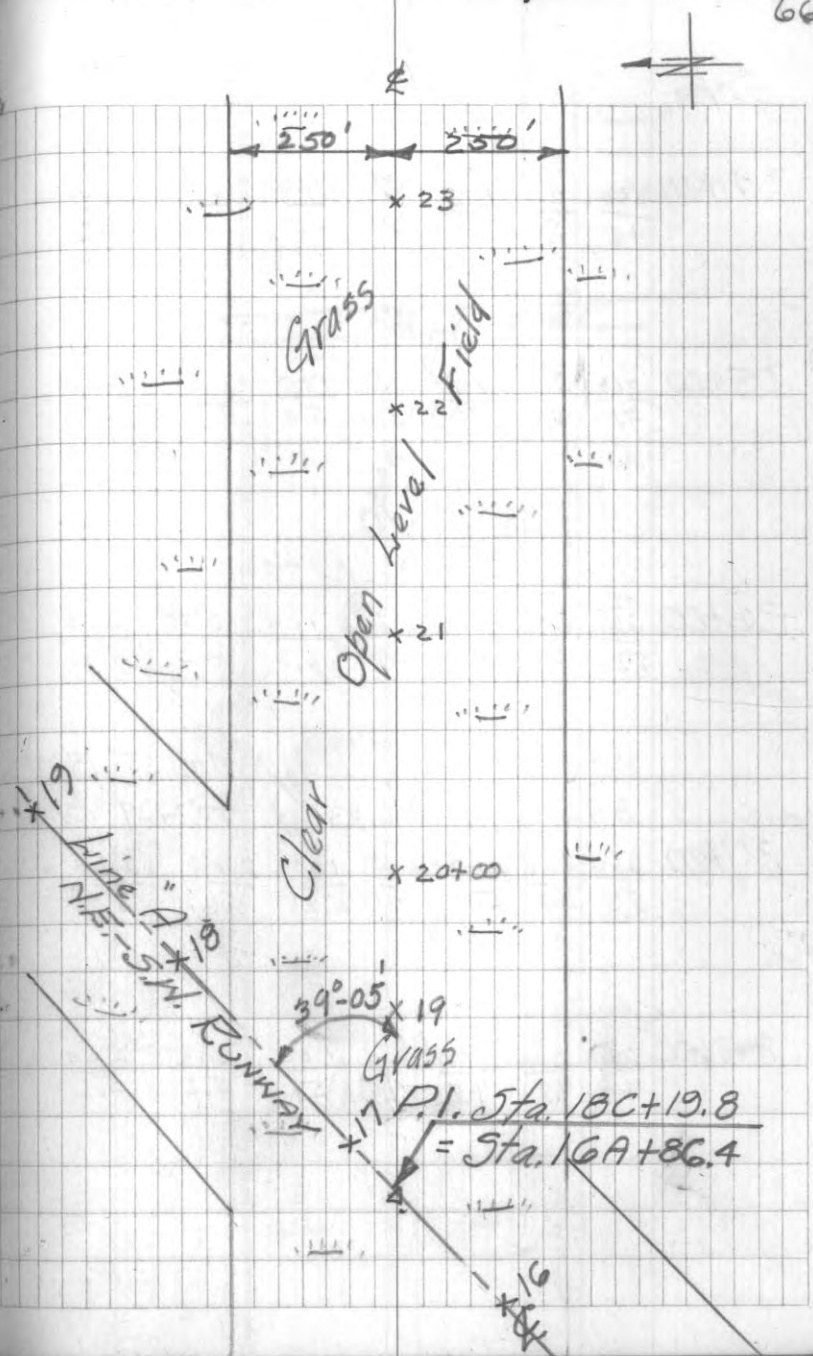
20+00 $\frac{260}{5.8}$ $\frac{200}{6.0}$ $\frac{100}{6.4}$ $\frac{100}{6.5}$ $\frac{100}{5.3}$ $\frac{160}{11.0}$ $\frac{200}{7.2}$ $\frac{260}{4.7}$

3.38 106.22 3.58 102.84

21+00 $\frac{260}{4.8}$ $\frac{200}{5.1}$ $\frac{100}{4.8}$ $\frac{100}{4.4}$ $\frac{100}{5.0}$ $\frac{200}{4.9}$ $\frac{260}{5.0}$

22+00 $\frac{260}{5.1}$ $\frac{200}{5.5}$ $\frac{100}{4.9}$ $\frac{100}{5.2}$ $\frac{100}{5.2}$ $\frac{200}{5.3}$ $\frac{260}{4.7}$

23+00 $\frac{260}{5.3}$ $\frac{200}{5.1}$ $\frac{100}{5.0}$ $\frac{100}{5.2}$ $\frac{100}{5.2}$ $\frac{200}{5.3}$ $\frac{260}{5.0}$



Sta.

106.22

£

24+00 $\frac{260}{48}$ $\frac{200}{50}$ $\frac{100}{48}$ $\frac{100}{51}$ $\frac{100}{52}$ $\frac{200}{52}$ $\frac{260}{53}$

25+00 $\frac{260}{51}$ $\frac{200}{50}$ $\frac{100}{51}$ $\frac{100}{50}$ $\frac{100}{50}$ $\frac{200}{51}$ $\frac{260}{53}$

26+00 $\frac{260}{53}$ $\frac{200}{50}$ $\frac{100}{51}$ $\frac{100}{50}$ $\frac{100}{53}$ $\frac{200}{52}$ $\frac{260}{54}$

387 102.35 B.M.#13

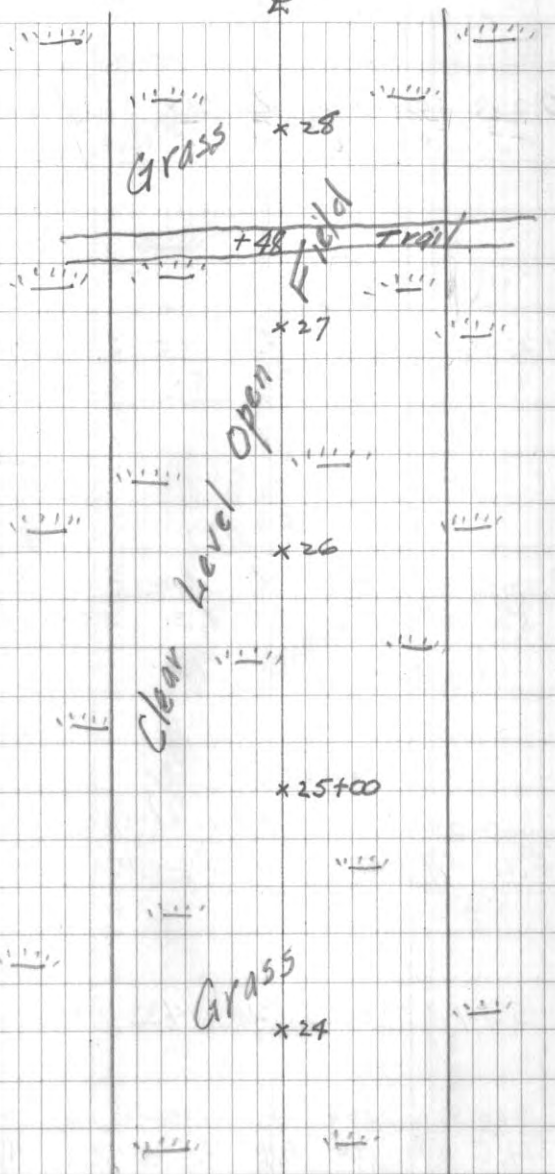
3.96

106.33

102.37 Corr.

27+00 $\frac{260}{53}$ $\frac{200}{49}$ $\frac{100}{51}$ $\frac{100}{51}$ $\frac{100}{52}$ $\frac{200}{56}$ $\frac{260}{52}$

28+00 $\frac{260}{49}$ $\frac{200}{48}$ $\frac{100}{48}$ $\frac{100}{48}$ $\frac{100}{51}$ $\frac{200}{52}$ $\frac{260}{56}$



Sta.

106.33

$$29+00 \quad \frac{260}{4.9} \quad \frac{200}{5.0} = \frac{100}{5.0} \quad \frac{100}{5.1} \quad \frac{200}{5.1} \quad \frac{260}{5.1}$$

$$30+00 \quad \frac{260}{4.9} \quad \frac{200}{5.1} \quad \frac{100}{5.3} \quad \frac{100}{5.0} \quad \frac{200}{5.3} \quad \frac{260}{5.5}$$

$$31+00 \quad \frac{260}{5.0} \quad \frac{200}{4.9} \quad \frac{100}{5.2} \quad \frac{100}{5.3} \quad \frac{200}{5.5} \quad \frac{260}{7.4}$$

$$32+00 \quad \frac{260}{5.2} \quad \frac{200}{5.0} \quad \frac{100}{5.1} \quad \frac{100}{5.3} \quad \frac{200}{5.4} \quad \frac{260}{6.5}$$

$$3.54 \quad 105.54 \quad 4.33 \quad 102.00$$

$$33+00 \quad \frac{260}{4.8} \quad \frac{200}{5.0} \quad \frac{100}{4.6} \quad \frac{100}{4.4} \quad \frac{200}{5.5} \quad \frac{260}{4.4}$$

Grass x33

x32

x31

x30+00

x29

Clear Level

Open Field

Grass

Sta.

105.54

34+00	$\frac{260}{5.6}$	$\frac{200}{5.1}$	$\frac{100}{6.8}$	$\frac{4}{5.4}$	$\frac{100}{4.8}$	$\frac{200}{4.6}$	$\frac{260}{4.3}$
-------	-------------------	-------------------	-------------------	-----------------	-------------------	-------------------	-------------------

35+00	$\frac{260}{5.7}$	$\frac{200}{6.4}$	$\frac{100}{4.7}$	$\frac{4}{4.9}$	$\frac{100}{4.6}$	$\frac{200}{4.4}$	$\frac{260}{4.6}$
-------	-------------------	-------------------	-------------------	-----------------	-------------------	-------------------	-------------------

36+00	$\frac{260}{6.0}$	$\frac{200}{8.1}$	$\frac{100}{7.9}$	$\frac{4}{6.5}$	$\frac{100}{4.5}$	$\frac{200}{4.3}$	$\frac{260}{3.7}$
-------	-------------------	-------------------	-------------------	-----------------	-------------------	-------------------	-------------------

37+00	$\frac{260}{4.4}$	$\frac{200}{5.0}$	$\frac{100}{5.8}$	$\frac{4}{4.7}$	$\frac{100}{4.4}$	$\frac{200}{3.9}$	$\frac{260}{3.1}$
-------	-------------------	-------------------	-------------------	-----------------	-------------------	-------------------	-------------------

38+00	$\frac{260}{3.9}$	$\frac{200}{5.4}$	$\frac{100}{4.3}$	$\frac{4}{4.3}$	$\frac{100}{5.0}$	$\frac{200}{3.0}$	$\frac{260}{4.6}$
-------	-------------------	-------------------	-------------------	-----------------	-------------------	-------------------	-------------------

3.38

104.94

400 101.54 BM #5

101.56

#

x 38

Grass

x 37

x 36

Open Field

x 35+00

x 34

Grass

Sta.

104.94

39+00	$\frac{G\ 64M}{12.9\ 0.0}$	$\frac{G\ 39M}{7.8\ 0.0}$	$\frac{\$}{4.2}$	$\frac{100}{4.2}$	$\frac{2.00}{1.2}$	$\frac{2.60}{2.4}$
-------	----------------------------	---------------------------	------------------	-------------------	--------------------	--------------------

39+56	$\frac{G\ \&\ M}{13.0\ 0.0}$					
-------	------------------------------	--	--	--	--	--

40+00	$\frac{G\ \&\ M}{12.4\ 1.98}$	$\frac{G\ 46M}{13.1\ 0.0}$	$\frac{G\ 67M}{7.9\ 2.0\ 8.4\ 0.0}$	$\frac{G\ 100M}{9.9\ 0.9}$		
-------	-------------------------------	----------------------------	-------------------------------------	----------------------------	--	--

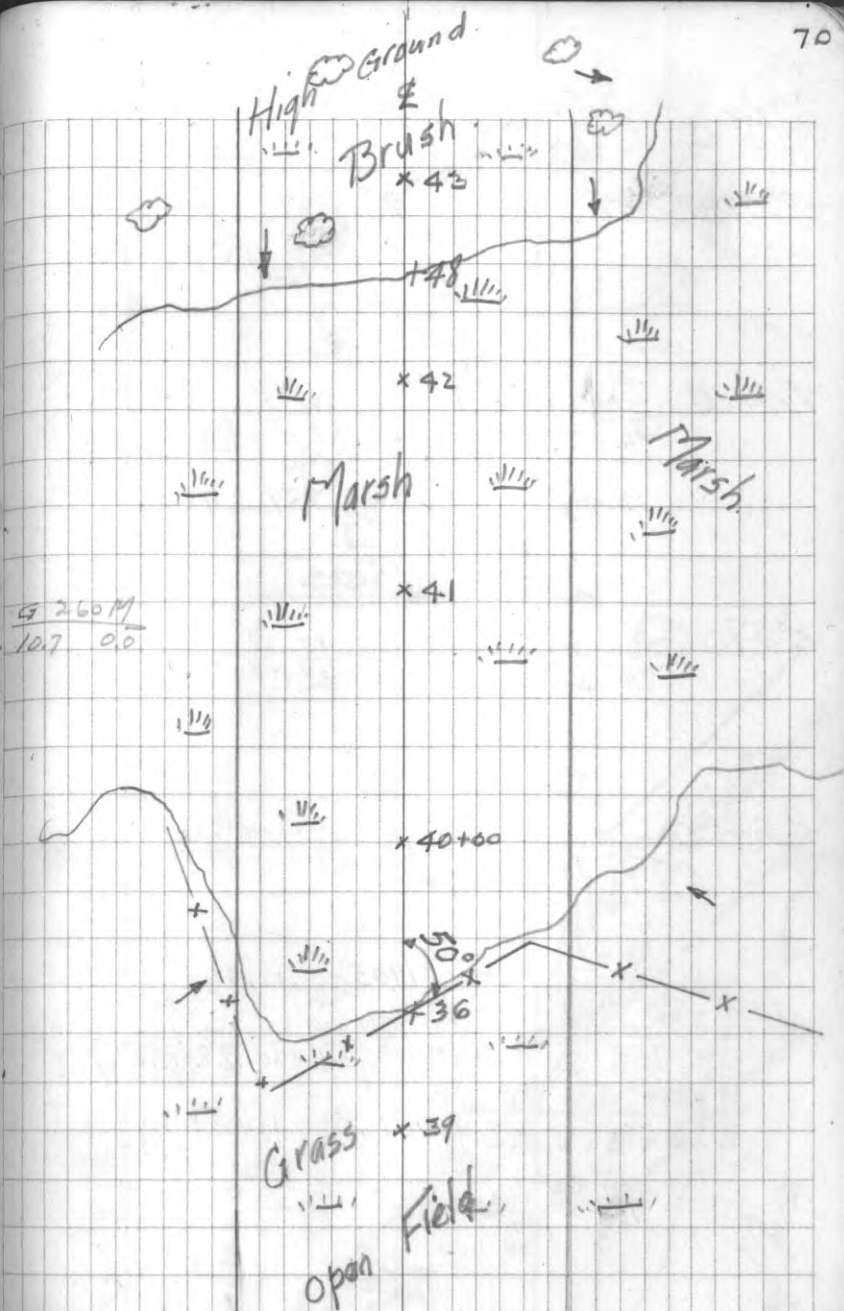
41+00	$\frac{G\ \&\ M}{12.6\ 1.76}$	$\frac{G\ 100M}{13.1\ 1.74}$	$\frac{G\ 200M}{12.0\ 20.5\ 12.5\ 24.5}$			
-------	-------------------------------	------------------------------	--	--	--	--

42+00	$\frac{G\ \&\ M}{12.5\ 26.2}$	$\frac{G\ 100M}{12.6\ 27.5}$	$\frac{G\ 200M}{12.4\ 32.2}$	$\frac{G\ 260M}{12.8\ 33.3}$		
-------	-------------------------------	------------------------------	------------------------------	------------------------------	--	--

341	102.43	5.92	99.02
-----	--------	------	-------

42+47	$\frac{G\ \&\ M}{10.5\ 0.0}$	$\frac{G\ 100M}{10.7\ 21.7}$	$\frac{G\ 200M}{10.3\ 30.8}$	$\frac{G\ 260M}{10.2\ 40.2}$
-------	------------------------------	------------------------------	------------------------------	------------------------------

43+00	72.12	114.15	24.0	102.03
		$\frac{\$}{9.5}$		

NOTE
LEFT X-SECTIONS COVERED ON "B" LINE

Sta.

114.15

437007 P.M.

$$\frac{\$}{9.1}$$

44+00

	+9.6					
$\frac{260}{9.2}$	$\frac{300}{53}$	$\frac{100}{68}$	$\frac{55}{6.0}$		$\frac{34}{2.0}$	$\frac{\$}{5.3}$
13.00	125.26	1.89	112.26			

45+00

$\frac{260}{9.4}$	$\frac{300}{6.7}$	$\frac{166}{4.6}$	$\frac{128}{8.7}$	$\frac{100}{7.3}$	$\frac{47}{3.7}$	$\frac{\$}{5.8}$
-------------------	-------------------	-------------------	-------------------	-------------------	------------------	------------------

46+00

$\frac{260}{11.7}$	$\frac{300}{3.2}$	$\frac{100}{2.6}$	$\frac{49}{5.1}$	$\frac{\$}{3.5}$	$\frac{46}{4.9}$	$\frac{100}{9.6}$	$\frac{122}{13.9}$	$\frac{144}{30.9}$	$\frac{163}{2.76}$
1.28	114.05	12.49	112.77						

47+00

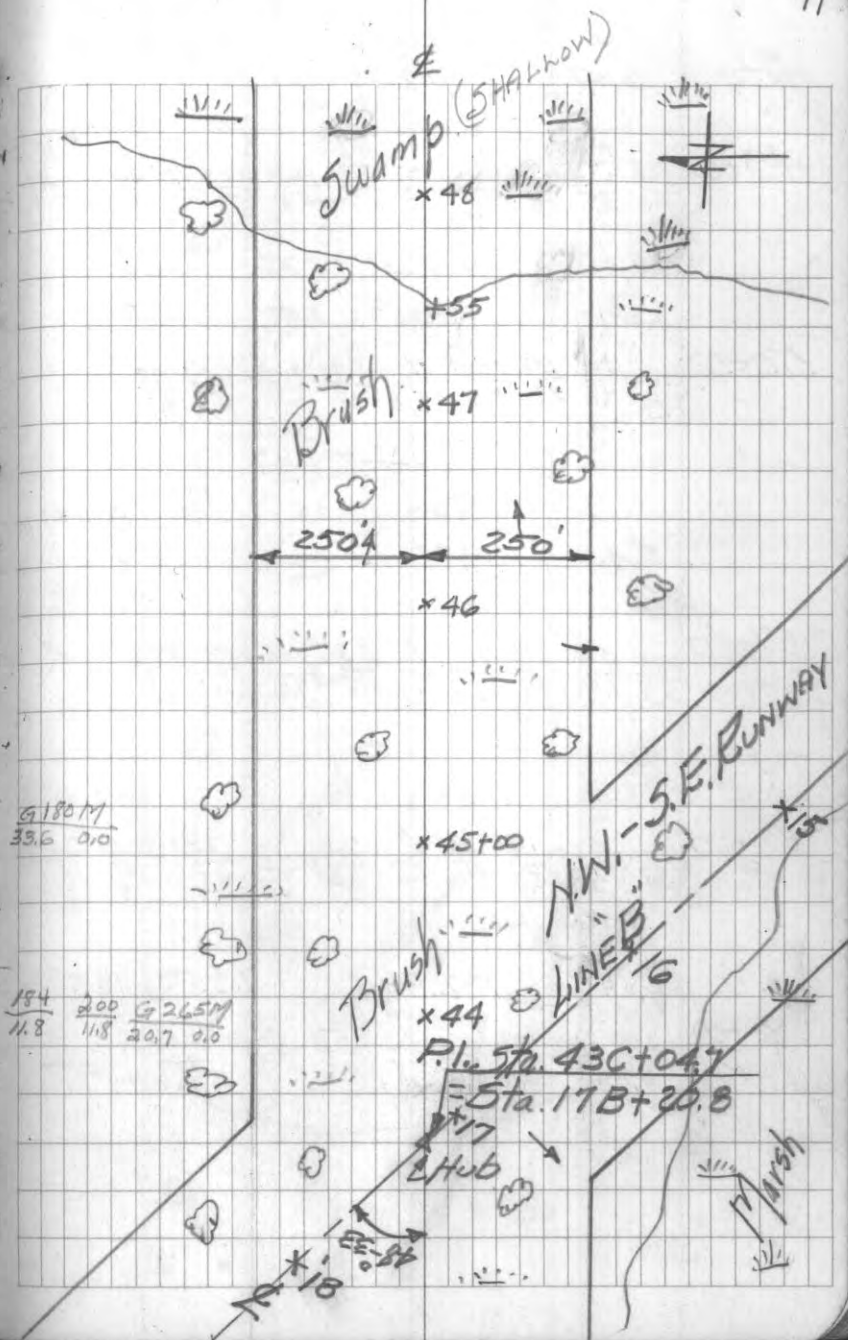
$\frac{260}{12.16}$	$\frac{300}{8.6}$	$\frac{100}{4.3}$	$\frac{32}{5.9}$	$\frac{\$}{10.0}$	$\frac{24}{13.4}$	$\frac{62}{17.0}$	$\frac{100}{18.2}$	$\frac{120}{12.6}$	$\frac{161}{17.3}$
0.59	101.01	13.63	100.42						

48+00

$\frac{260}{7.9}$	$\frac{300}{6.6}$	$\frac{100}{6.5}$	$\frac{44}{6.9}$	$\frac{\$}{6.7}$	$\frac{100}{6.8}$	$\frac{126}{6.3}$	$\frac{169}{5.4}$	$\frac{200}{4.6}$	$\frac{260}{6.2}$
							+13.7		

E.T. SECTIONS COVERED
BY X-SECTIONS ON "B" LINE

NOTE: !!



Sta. 6.27 101.01 102.58 4.70 96.31

49+00 +10.1
260 200 100 35 51 100 120 181 200 260
140 5.2 5.3 3.2 6.0 8.7 -5.4 5.7 4.8 11.0 +2.1
0.1

12.06 114.25 0.38 102.20

12.10 124.85 1.50 112.75

50+00 260 200 138 100 67 100 147 177
14.9 9.2 5.1 3.6 5.3 7.8 6.4 5.4 8.7

200 9.7
4.1 2.60
0.5

0.33 124.52 RM.#14

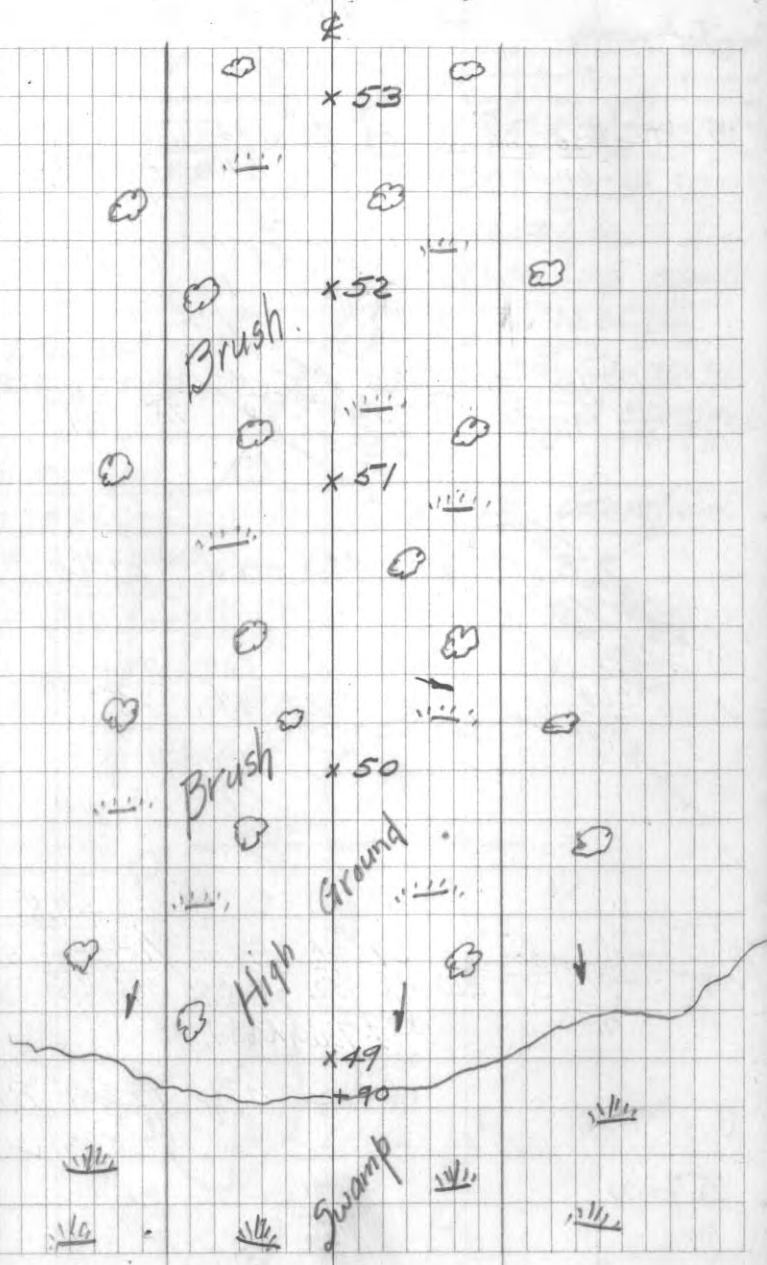
5.44 129.99 124.55

51+00 260 200 143 100 33 100 155 200 260
2.3 1.0 4.6 8.6 6.1 5.8 7.2 6.4 7.3 7.1

52+00 260 200 100 46 20 60 100 200 260
9.8 2.3 5.8 3.6 5.8 6.5 1.3 4.1 5.6 3.6

6.80 132.44 9.35 125.64

53+00 200 120 100 52 53 100 200 260
260 6.7 1.8 3.1 8.9 7.8 4.2 7.0 6.2 7.1
2.9



Sta

132.44

54+00	200	160	100	53	¢	100	200	260
260	6.1	10.2	10.8	9.5	5.5	7.4	3.5	6.7
8.3								

55+00	124	100	80	36	¢	100	200	260
260	9.7	8.8	10.2	6.1	6.9	6.8	7.8	3.4
10.7	13.0							

3.05 130.49 5.00 127.44

56+00	200	100	19	¢	100	200	260
260	5.6	4.9	7.2	5.2	3.4	2.8	0.6
6.5							

56+69.1	200	100	29	¢	68	100	155	200	260
260	5.9	5.5	4.8	5.2	6.1	3.7	4.8	3.8	3.9
7.8									

+9.8
¢ Town Road.

2.42 128.07 B.M. #15

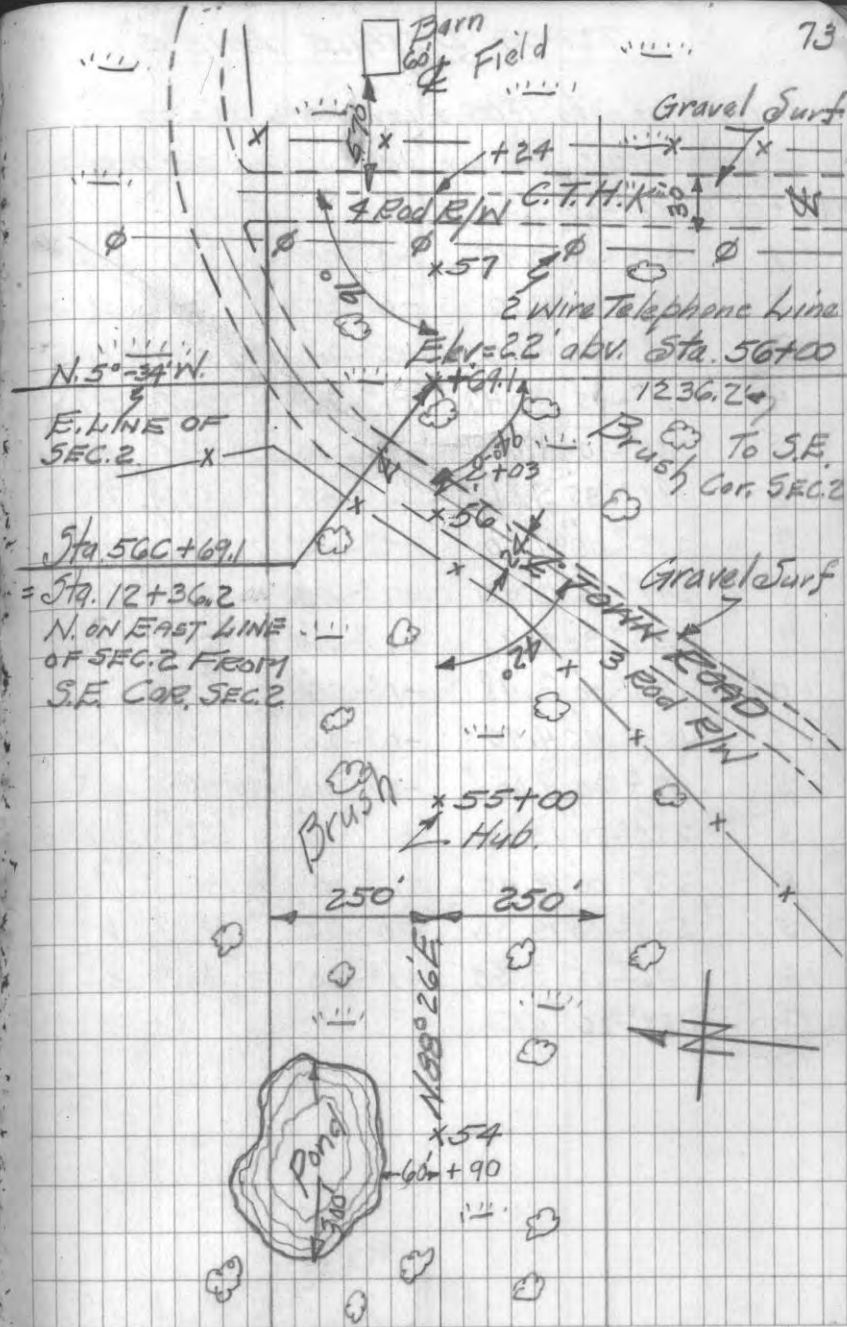
128.03 ✓

57+00

¢
5.6

124.89

73



TOPOG. DETAILS LINE "C"

Inst. at Sta. 1400 ELEV=10496 H.I.=5.2

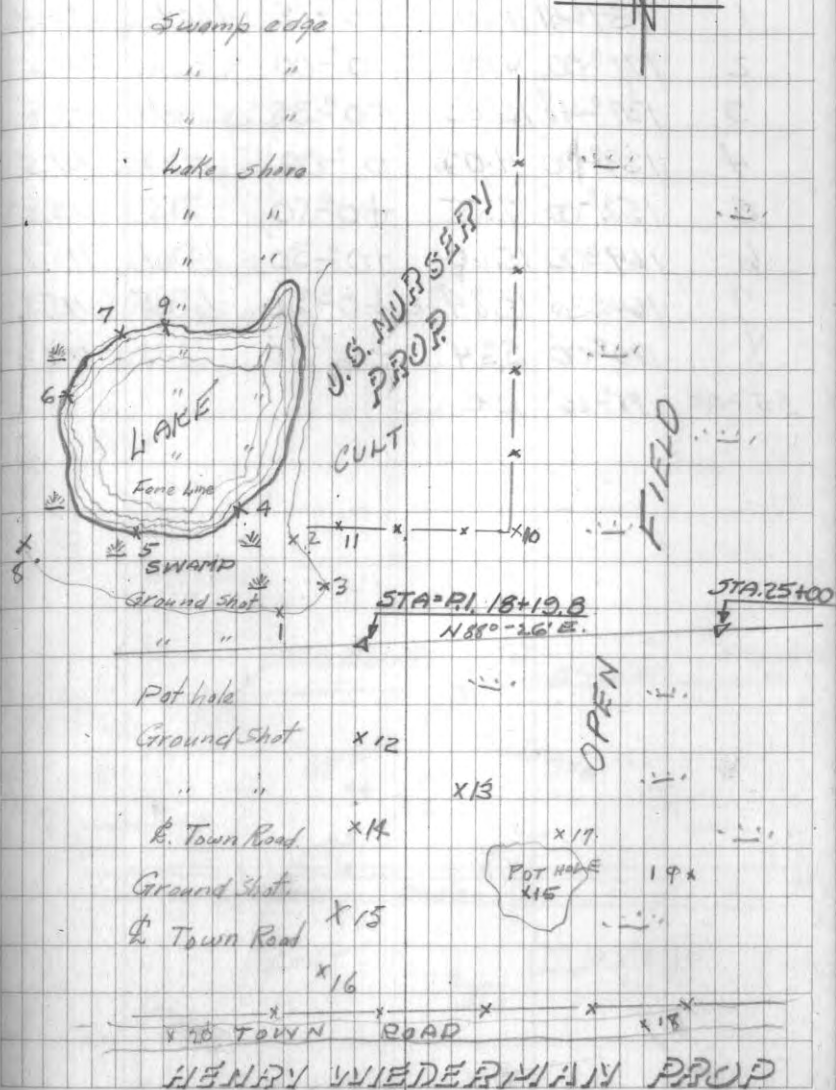
OBJ.	AZ.	ROD INT.	VERT. L.	HOR. DIST.	DIFF. EL.
Sta. 5+00	88°-26'				
1	343°-50'	3.95	+1°-00'	395	111.8
2	196°-20'	4.10	-0°-15'	410	103.2
3	318°-30'	4.60	+2°-20'	460	123.7
4	191°-15'	7.04	+1°-00'	704	117.2
5	286°-10'	4.60	-0°-10'	460	103.6
6	189°-35'	5.81	+1°-05'	581	115.9
7	255°-00'	4.60	+1°-45'	460	119.0
8	249°-25'	2.40	+1°-00'	240	109.1
9	233°-30'	2.91	+1°-00'	291	110.0
10	180°-00'	3.48	-1°-50'	348	93.8
11	161°-45'	4.70	-0°-20'	470	107.2
12	147°-30'	4.60	-2°-40'	460	83.6
13	285°-50'	13.80	+1°-00'	1381	129.0
14	279°-00'	14.40	+1°-00'	1441	130.0
15	280°-00'	13.30	+0°-25'	1331	114.7
16	46°-15'	3.55	+1°-50'	355	116.2
5+00	88°-26'	CK			



Inst at P.I. 18+19.8 ELEV.=100.00 H.I.=5.1

Sta.	OB.	AZ.	ROD INT.	VERT. L.	Hor. DIST.	DIFF. EL.
25+00		88°-26'				
1	269°-40'	2.46	-3°-30'	246	85.0	
2	311°-40'	2.73	-3°-25'	273	83.8	
3	291°-32'	1.82	-4°-40'	182	85.2	
4	309°-25'	6.00	-1°-30'	600	84.3	
5	297°-50'	5.68	-1°-15'	568	87.6	
6	298°-12'	8.60	-0°-50'	860	87.5	
7	303°-15'	9.68	-0°-40'	968	88.8	
8	298°-40'	10.00	-0°-30'	1001	91.3	
9	310°-00'	10.20	-0°-40'	1021	88.2	
10	18°-36'	4.88	0°-00'	488	100.0	
11	325°-32'	6.12	-0°-30'	612	94.7	
12	189°-00'	5.54	+0°-30'	554	104.8	
13	146°-00'	5.96	+0°-30'	596	105.2	
14	196°-00'	7.20	+0°-20'	720	104.2	
15	162°-00'	6.00	-0°-25'	600	95.6	
16	203°-00'	9.80	+0°-20'	980	105.7	
17	154°-00'	9.62	-0°-20'	962	94.4	
18	137°-35'	14.20	0°-00'	1421	100.0	
19	177°-00'	7.70	0°-00'	770	"	
20	172°-45'	9.70	+0°-15'	970	104.3	
25+00		88°-25'	OK shot.			

ELEV



Inst. at Sta. 28+00 ELEV. = 101.53 H.I. = 5.1

OBJ	AZ.	ROD INT.	VERT. L	HOR. DIST.	DIFF. EL.	ELEV.
35+00	88°-26'					
1	139°-41'	11.00	+0°-15'	1101	106.4	Fence Cor
2	171°-00'	6.10	0°-00'	610	101.5	Ground
3	137°-48'	12.00	+0°-35'	1201	113.8	to Town Road
4	139°-00'	4.02	0°-00'	402	101.5	Ground shot
5	152°-00'	7.55	+0°-50'	755	112.5	" "
6	169°-00'	15.60	+0°-30'	1561	115.1	N.W. Cor Barn
7	164°-30'	15.84	+0°-30'	1585	115.3	N.W. Cor House
8	190°-00'	5.34	+0°-20'	534	104.6	Ground
35+00	88°-26'	CK.				

ELEV.

Fence Cor

Ground

to Town Road

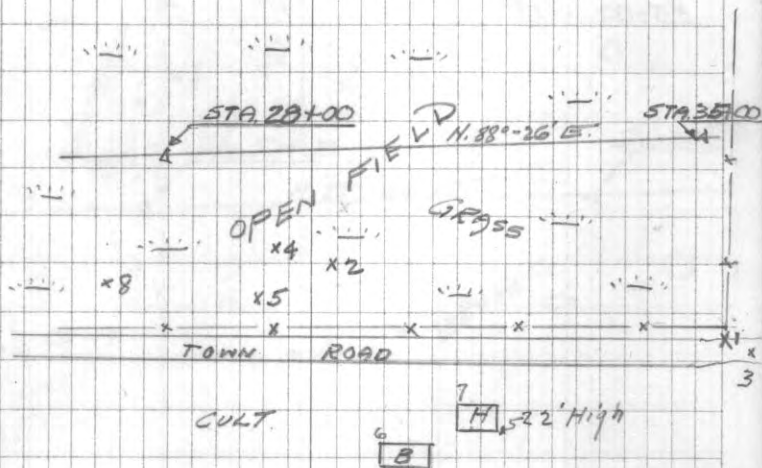
Ground shot

" "

N.W. Cor Barn

N.W. Cor House

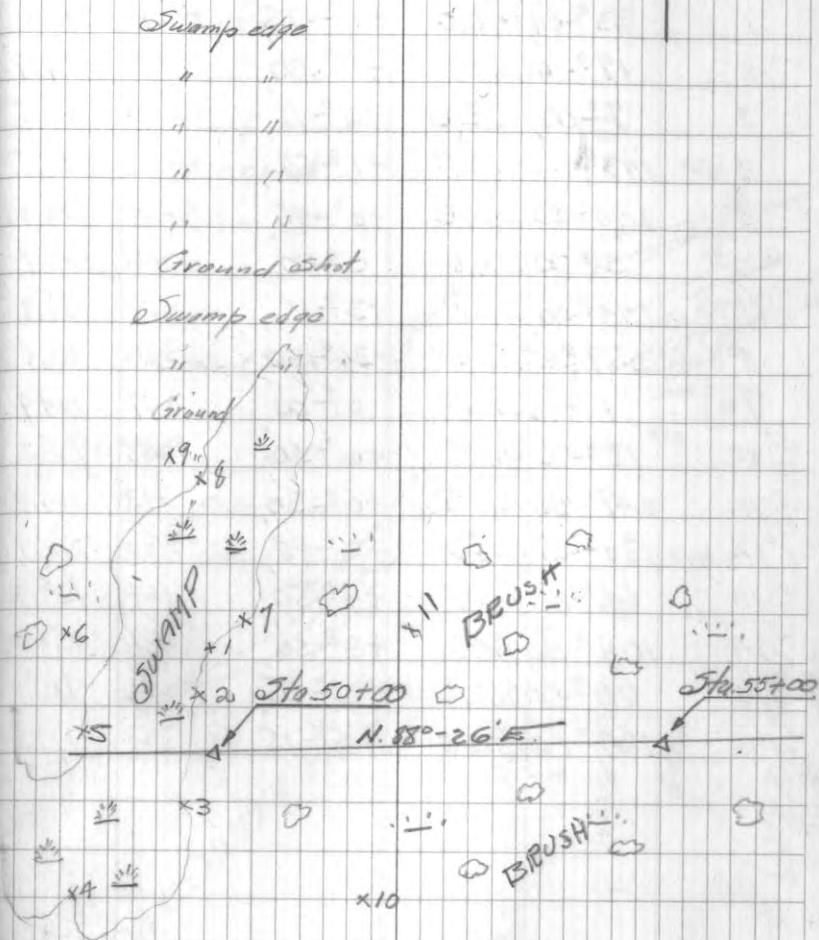
Ground



Inst. at Sta. 50+00 ELEV. = 119.55 H.I. = 5.3

OB. I.	AZ.	ROD. INT.	VERT. L.	HOR. DIST.	DIFF. EL.
Sta. 55+00	88°26'				
1	321°00'	2.30	-5°30'	230	97.6
2	296°30'	1.50	-9°05'	150	96.2
3	227°00'	1.49	-9°12'	149	96.0
4	238°00'	2.55	-5°15'	255	96.3
5	268°00'	2.31	-6°10'	231	94.9
6	296°45'	3.84	-0°20'	384	117.3
7	321°00'	2.80	-5°05'	280	94.5
8	330°30'	6.52	-2°12'	652	94.5
9	321°00'	7.42	0°00'	742	119.6
10	141°00'	3.28	+1°30'	328	128.1
11	44°00'	3.66	+1°00'	366	125.9
55+00	88°-26'	CK			

ELEV.



Inst at Sta 57+00 ELEV.=124.89 H.I.=5.1

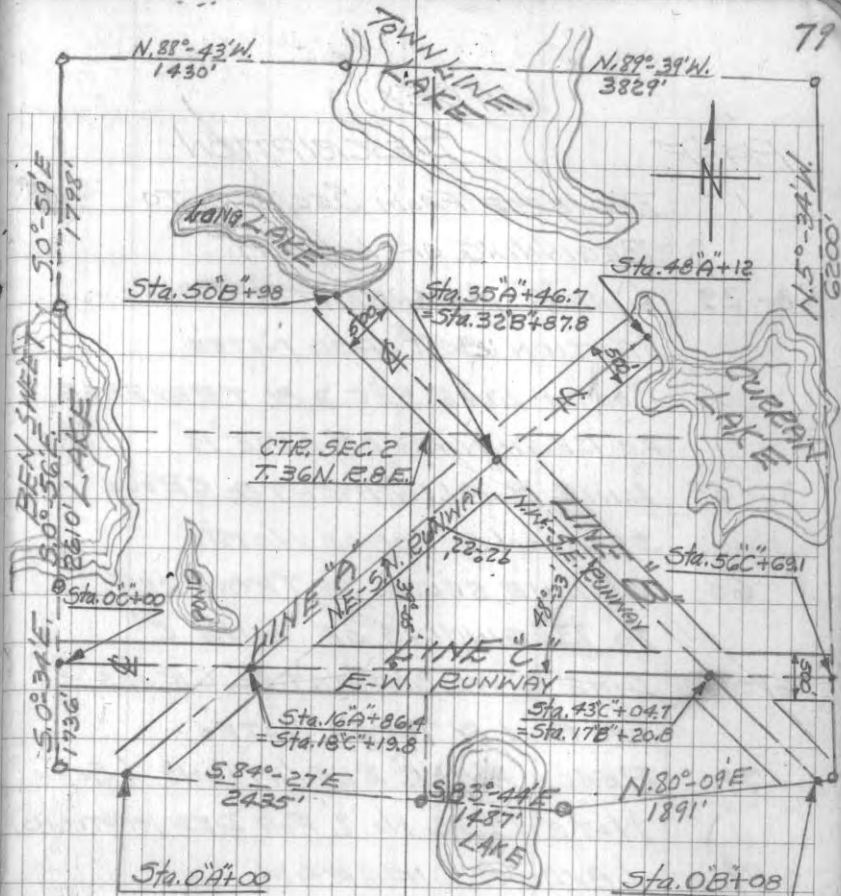
OBJ.	AZ.	ROD INT.	VERT. L.	HOR. DIST	DIF. ELEV.	ELEV.
53+00	268°-26'					
1	33°-04'	4.20	+1°-25'	420	135.3	to C.T.H.K.
2	17°-10'	2.87	+1°-00'	287	129.9	" " "
3	7°-00'	1.30	+0°-15'	130	125.5	Road to intersection
4	173°-45'	4.37	+1°-55'	437	139.5	to C.T.H.K.
5	240°-50'	2.60	+0°-45'	260	128.3	to Town Rd.
6	5°-00'	2.06	0°-00'	206	124.9	Telephone line
7	177°-00'	2.27	+3°-15'	227	137.7	" "
8	359°-15'	1.36	-30°-30'	136	65.4	Fence Cor.
9	1°-45'	2.69	0°-00'	269	124.9	" "
10	18°-50'	2.55	+0°-50'	255	128.6	
11	241°-00'	3.73	+0°-30'	343	127.9	Fence line
12	130°-00'	5.80	+2°-45'	580	152.7	Ground
13	64°-00'	1.64	+4°-50'	164	138.7	"
14	104°-00'	4.06	+3°-50'	406	152.0	"
15	60°-00'	2.26	+2°-35'	226	135.1	"
16	129°-00'	3.20	+2°-15'	320	137.5	"

ELEV



BENCH MARKS

No.	ELEV.
1	106.40
2	102.34
3	98.27
4	102.12
5	101.56
6	98.19
7	122.78
8	119.76
9	102.19
10	101.84
11	108.59
12	107.32
13	102.37
14	124.55
15	128.03
U.S.C+G.S	157.79



LAYOUT DIAGRAM.
OF
AIRPORT RUNWAYS

INDEX.

PAGE	DESCRIPTION.
1	TRAVERSE FROM SEC. COR. TO BEGINNING OF LINE "A"
2-29	LINE "A" ALIGNMENT & CROSS SECTION & TOPOG. NOTES.
30	SOUTH LINE SEC. 2 & TRAVERSE TO BEGINNING OF LINE "B"
31-59	LINE "B" ALIGNMENT & CROSS SECTION & TOPOG. NOTES.
60	W. LINE SEC. 2 & TRAVERSE TO BEGINNING OF LINE "C"
61-78	LINE "C" ALIGNMENT & CROSS SECTION & TOPOG. NOTES.
79	BENCH MARK ELEVATIONS (See NOTE BOOK No. 2 FOR DESCRIPTIONS)
79	LAYOUT DIAGRAM.

99°-45'

$$\begin{array}{r} 72.9 \\ 462 \\ \hline 534.9 \end{array}$$

$$\begin{array}{r} 180 \\ 4948 \\ \hline 22940 \end{array}$$

End line A = 48 + 12 = edge of lake

122°-16'
323'

$$\begin{array}{r} 63 = 18.53 \\ 5.2 \\ \hline 1.1 \end{array}$$

87.8

32 + 87.8 = P.I. B

35 + 46.7 = P.I. A

46.7

$$\begin{array}{r} 106.42 \\ 7.5 \\ \hline 98.92 = 18 \\ 1.1 \end{array}$$

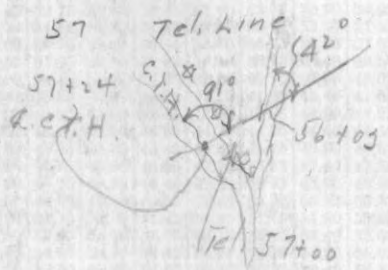
92°-22' Δ

$$\begin{array}{r} 105.20 \\ 52 \\ \hline 100.00 \end{array}$$

Sta. 55+00 Hub. } C2

56+03 L. To Rd. } 1

$$\begin{array}{r} 105.20 \\ 100.00 \\ \hline 5.18 \end{array}$$



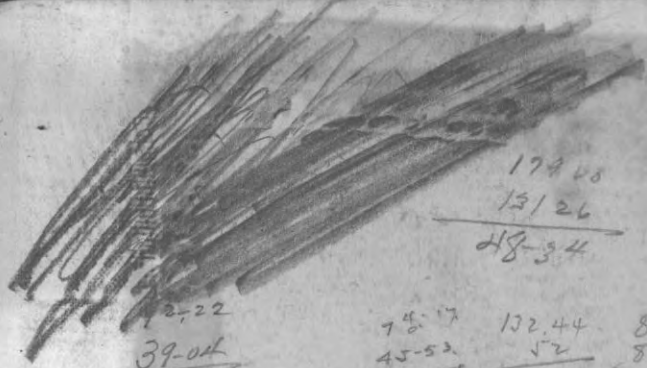
90° from Sta 21+91.5

252.15' A line

from Nursery Cor.

A line = 16 + 86.4
 C line = 18 + 19.8
 B line = 17 + 20.8
 C line = 43 + 04.7

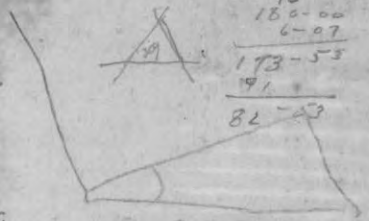
Δ = 39°-05'
 P.I.
 P.I. = 48°-33'



$$\begin{array}{r} 122.22 \\ 39.04 \\ \hline 131-26 \end{array}$$

$$\begin{array}{r} 179.48 \\ 131.26 \\ \hline 48-34 \end{array}$$

$$\begin{array}{r} 1891.0 \\ 321.9 \\ \hline 1569.1 \end{array}$$



Top. Cor. 323

Fence Post 85

Nursery 106.40

$$\begin{array}{r} 1615 \\ 2584 \\ \hline 179-60 \\ 16-09 \\ \hline 163-53 \end{array}$$

$$\begin{array}{r} 179-60 \\ 16-09 \\ \hline 163-53 \end{array}$$

$$\begin{array}{r} 173-53 \\ 91 \\ \hline 82-43 \end{array}$$

$$\begin{array}{r} 127.2 \\ 52 \\ \hline 89-60 \\ 83-44 \\ \hline 6-16 \end{array}$$

Henry Wiselerman

H.

$$\begin{array}{r} 89-60 \\ 80-09 \\ \hline 9-51 \\ 9-51 \\ \hline 75-77 \\ 94-17 \end{array}$$