

INDEX

TOWNSHIP	SECTION	PAGE	
Twp. 35N, R. 9E	19	23-28	
	8	64-67	
	6	68-73	
	7	74-77	
Twp. 36N, R. 8E	11	112-113	
	10 & 15	84	
	14	111-112	
Twp. 36N, R. 9E	19	104	
	21	12	
	22	1-12	
	23	78-81	
Twp. 36N, R. 10E	28	97-98	
	29	99-101	
	35 & 10 & 15	92	
	32	104	
Twp. 36N, R. 11E	5	39-42	
Twp. 37N, R. 6E	24	88-91	
Twp. 37N, R. 7E	32	144	
Twp. 37N, R. 8E	5	102-103	
	13	115-116	
	34	144-149	
	12	94	
	14	85	
	11	55-63	
Twp. 37N, R. 9E	17	45-53	
	18	31-37	
	20	13-21	
	23	107-108	
	27	81-83	
	28	117-118	
	Twp. 37N, R. 10E	1	109-110
		8	95-116
Twp. 38N, R. 9E	30 (1-12, 14)	76-87	
Twp. 38N, R. 10E	20	110	
	3	93	
	7	105	
	18	73-74	
	34	111	
Twp. 38N, R. 11E	15	111-114-122	
	51	118	
Twp. 39N, R. 10E	32	106	
	31	118	

Sec 22 T36N R9E

Feb- 1961

Goddard's crew

Random East from SW Sec. cor  
22 Brng 82° 45' mag  
41.39 closed out 40 lks No.  
of 5 1/4 cor.

Corr Brng N 83° 19' E  
20.695 set w/16 So line in  
open field near fence line  
No BTs

Chaining East on random  
7.54 chs enter swamp  
10.50 " leave swamp  
20.6675 " to N.S. fence line  
34.38 " enter swamp leave field  
39.91 " to woods road  
41.39 Total

Random West from c 1/4 S. 22  
Brng 264° 35'  
41.065 chs closed out 47 lks so  
Corr Brng S 85° 09' W  
20.5425 ch. set c-w/16 23 1/2 lks 1/6  
BTs Pw 24 S 38° E 34 lks  
Pw 14 S 5° N 67 lks  
Set ref. pipe 28 lks so.  
Cont next page.

Cont Sec 22-36-9

Reset c/4 from D.F. Dorrs old  
BTs.

New BTs

Chaining West from c/4

0.15 chs enter high ground  
3.75 chs enter swamp  
17.72 " @ woods road  
19.03 " leave swamp  
21.41 " road  
34.00 " leave road in ditch  
true line follows road  
41.035 chs Total

Random East from c/4 on

true line calculated from W 1/2

Mag. Brng  $85^{\circ}17'$

41.54 closed out 10 1/2 Iks No.

of E 1/4 Pin stp at E 1/4 SW 1/4 4 Iks

20.77 set c.E 1/16 S 1/4 Iks So.

Remains of two tan BTs still evident

dist x Brngs OK

BTs old 4.530° E 34 3/4 Iks.

Spring N 70° E 32 1/2 Iks.

cont next page.

Cont Sec 22-36-9

Random East from c-5 1/16 Brng

$84^{\circ}30'$  mag

This line was run from an old  
pipe thought to be c-5 1/16 -

Random was re-run after c-5 1/16  
was set from our survey

Re-run on  $84^{\circ}00'$  mag

Chaining East

2.57 chs edge of river

5.48 " point in river

7.22 " leave point in river

9.50 " leave river east bank

14.60 " Tote road

20.6575 closed out 7 1/2 Iks No of S 1/16

24.95 " @ tote road

29.51 " enter swamp

30.75 " leave " "

34.00 " enter swamp

41.315 set S 1/16 15 Iks Sixth  
BT cherry 8 N 88° W 89 1/2 Iks

Note: After setting the E 1/4 on  
old pipe & BT stump was  
located - We then moved the 1/4  
cor. to the proper location which

cont next page

Cont Sec 22-36-9

is in the random line  $1\frac{1}{2}$  lks.  
west of corner. The line was  
rechain'd from E $\frac{1}{4}$  North and  
the NE cor. set by doubling  
the distance thru the N $\frac{1}{16}$  &  
 $1\frac{1}{2}$  lks west of random line  
Random was 0.00 lks departure  
at N $\frac{1}{16}$

Pin. stp. at NE cor. now  
corresponds to old stp. BT.  
N $56^{\circ}$  W. 65 lks

Chaining North from E $\frac{1}{4}$   
started  $1\frac{1}{2}$  lks west of cor.

3.62 chs enter grass marsh  
4.95 " leave marsh enter cut over Aspen  
9.51 " & woods road  
13.91 " enter swamp  
20.81 " N $\frac{1}{16}$  on line  
21.50 " enter swamp  
25.75 " leave swamp  
29.50 " edge of plantation  
41.62 " set NE Sec Cor.  $1\frac{1}{2}$  lks  
West No. BTs.

Iron pipe stamped & set  
50 $^{\circ}$  35' E

Cont next page

Cont Sec 22-36-9

Random South from E $\frac{1}{4}$  Sec. 22

Brng 181 $^{\circ}$  15' mag

20.6425 closed out 47 lks West  
of S $\frac{1}{16}$

41.285 chs set SE Sec Cor  
94 lks East

Sec Cor. BTs

Pn 26 N $84^{\circ}$  E 1.27 chs

Ad 8 S $82^{\circ}$  W 35 lks

Corr Brng. 50 $^{\circ}$  03' W

5 $^{\circ}$  40 chs enter swamp

11.70 " leave swamp

20.64 $\frac{1}{4}$  47 lks West of S $\frac{1}{16}$

31.60 " enter swamp

37.28 " leave "

40.32 " enter "

41.285 " hub

Random So. from E $\frac{1}{4}$  Brng 179 $^{\circ}$  30'

40.90 chs closed out 30 lks East  
of S $\frac{1}{4}$

20.45 chs set c. S $\frac{1}{16}$  15 lks West

BTs Pw 8 N $75^{\circ}$  E 56 $\frac{1}{2}$  lks

Ad 7 S $84^{\circ}$  W 64 lks

Corr Brng. 50 $^{\circ}$  05' E

cont next page

Cont next page

Chaining South from city  
3.50 chs - high ground  
5.09 " - driveway & field  
16.50 " edge of field  
15.17 " end of fence  
18.22 " @ river  
19.54 " So side of river  
20.45 " C-S 1/16  
34.81 " enter woods road  
35.73 " leave woods road  
40.52 " driveway  
40.90 Total distance

Random East from S 1/4 Sec 22

Brgy 84° 55' mag

41.11 chs closed out 20 1/2 lks. Sou  
of the SE cor.

20.555 chs set E 1/16 S. line, 10 1/4 lks No

BTS Bw 4 N 57° W 25 lks

Bw 6 N 54° E 41 lks

Corr Brgy N 84° 58' E

chaining East

S 1/4 lays just off road corner

.82 chs high ground

14.91 " creek bottom

16.43 " @ creek

cont next page

Cont Sec 22-36-9

17.80 chs enter high ground  
21.45 " West edge of river  
22.99 " East " " "  
29.47 " leave river bottom  
41.11 Total distance

Random South from C-W 1/16

Brgy 178° 30' mag

41.05 closed out 80 lks East  
of W 1/16 S. line

20.525 chs set SW 1/16 43 lks W

Bw 4 N 50° W 40 lks

Sb 6 N 85° W 1.26 chs

Set Iron pipe at 47.795 chs  
& 1 chain west the approx  
boundary marker for parcel  
of land in Sec 27

6.20 chs set M.C. on N side  
of river (Pelican) 13.01 lks West

BTS Pw 14 N 57° E 25 lks

Elm 7 N 34° W 72 lks

Corr Brgy 50° 18' E

8.50 chs set M.C. South side Pelican R.

BTS Maple 12 N 44° W 35 lks

Maple 9 S 36° W 6 3/4 lks

cont next page

SECTION 77, TWP 37N., R. 8E  
CONT'D.

RUNNING FROM THE W  $\frac{1}{16}$  SOUTH LINE,  
ON A COMPILTED BRNG. & DISTANCE AS  
SHOWN BELOW:

N  $62^{\circ} 01' 18''$  E FOR A DISTANCE  
OF 30.371 CHAINS; SET THE

S  $\frac{1}{16}$

RUNNING FROM S  $\frac{1}{16}$  ON COMPILTED  
BRNG. & DISTANCE AS FOLLOWS:

S  $87^{\circ} 28' 40''$  E FOR A DISTANCE  
OF 30.481 CHAINS TO THE W  $\frac{1}{16}$

DEPARTURE: NONE

ALL LINES PERTAINING TO ST. REGIS OWNER  
SHIP, BLAZED & PAINTED.

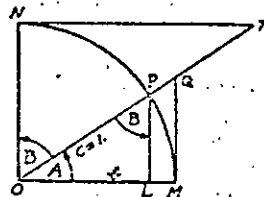


TABLE II

TRIGONOMETRIC FORMULAE

$$\angle A = \angle MOP \quad \angle B = \angle PON = \angle OPL$$

$$R = OB = c = 1$$

$$\sin A = \frac{a}{c} = \frac{a}{1} = a = \cos B = LP$$

$$\cos A = \frac{b}{c} = \frac{b}{1} = b = \sin B = OL$$

$$\tan A = \frac{a}{b} = \frac{MQ}{OM} = \frac{MQ}{1} = MQ = \cot B = MQ$$

$$\cot A = \frac{NT}{ON} = \frac{NT}{1} = NT = \tan B = NT$$

$$\csc A = \frac{OQ}{OM} = \frac{OQ}{1} = OQ = \csc B = OQ$$

$$\sec A = \frac{OT}{ON} = \frac{OT}{1} = OT = \sec B = OT$$

$$\text{vers } A = \frac{LM}{OP} = LM = \text{covers } B \neq$$

$$\text{covers } A = \frac{OP - LP}{OP} = OP - LP = \text{vers } B$$

$$\text{exsec } A = PQ = \text{coexsec } B$$

$$\text{coexsec } A = PT = \text{exsec } B$$

$$\sin \frac{1}{2}A = \sqrt{\frac{1 - \cos A}{2}} \quad \cos \frac{1}{2}A = \sqrt{\frac{1 + \cos A}{2}}$$

$$\sin 2A = 2 \sin A \cos A \quad \cos 2A = \cos^2 A - \sin^2 A$$

$$\text{Law of Sines} \quad \frac{\sin A}{a} = \frac{\sin B}{B} = \frac{\sin C}{C}$$

$$\text{Law of Cosines} \quad c^2 = a^2 + b^2 - 2ab \cos C$$

$$\text{Law of Tangents} \quad \frac{a+b}{a-b} = \frac{\tan \frac{1}{2}(A+B)}{\tan \frac{1}{2}(A-B)}$$

Cont Sec 22-36-9

1.61 chs enter swamp  
 4.07 chs leave swamp  
 5.25 chs enter "  
 9.53 " leave "  
 19.02 " enter "  
 20.655 " Total

Random South from C-E 1/16

Brg 179° 35' mag

20.55 closed out 28 1/2 1/4s East  
 of SE 1/16

Cont Brg 50° 23' W

chaining So.

5.55 chs leave swamp  
 6.99 " enter "  
 12.00 " leave "  
 15.12 " enter field  
 20.55 Total

Random South from SE 1/16 - Set

over on corner, corr Brg  
 to 180° 00'

20.55 chs closed out 15 1/4s West  
 16.60 " Set M.C. North side  
 Pelican river 12.11 1/4s East  
 Corr Brg 50° 35' E.

Cont next page

Cont Sec 22-36-9

chaining So. from the SE 1/16  
 to E 1/16 So line  
 3.00 chs enter swamp  
 8.33 chs leave "  
 15.00 chs E woods road  
 16.65 chs to North side Pelican River  
 19.07 " South " "  
 20.55 " Total

S 1/4 Sec 23 BTs

Ta 6 S62° E 56 1/4s

Ta 4 S22° E 62 1/4s

S 1/4 Sec 22 (Old BTs)

BTs Balsam 6 S54° W 57 1/4s

Ag Slump 12 S14° E 43 1/4s

New BT. Pw 8 S45° E 9 1/2 1/4s

Pw 14 S1° W 1.39 1/2 chs

SE cor Sec 21

BTs Pn 16 S3° W 69 1/4s

Pn 6 S84° E 62 1/4s

S 1/16 E line Sec 21

BTs Elm H N29° E 44 1/4s

Maple H S19° W 27 1/2 1/4s

Cont next page

Twp. 35N. R. 9E	SECT.	Page
Twp. 35N. R. 9E	27	139-141
" "	19	22-38
" "	8	64-67
" "	6	68-73
" "	7	74-77
Twp. 36N. R. 9E	10 (134) (35)	128
Twp. 36N. R. 9E	32-35	1-12
" "	33	78-81
Twp. 36N. R. 10E	38	97-98
" "	39	99-101
Twp. 37N. R. 9E	30	13-21
" "	18	31-37
" "	17	45-53
" "	11	55-60
" "	12	61
" "	11	62-63
" "	27	82-83
Twp. 38N. R. 10E. THUNDER LAKE LEASE	10	152-153
T. 39N. R. 9E	14	154-155
T. 37N. R. 8E	2	155-158
T. 36N. R. 10E	17	158-160

4  
4

ch

Cont Sec 21-22-36-9

C-S<sup>1</sup>/<sub>16</sub> Sec 21

BTs Basswood 18 N 83° W 1.32 chs

Tel. Pole S 27° E 76 lks

SE<sup>1</sup>/<sub>16</sub> Sec 21

BTs Elm 5 N 64° E 53 <sup>1</sup>/<sub>2</sub> lks

By 4 S 73° W 12 lks

S<sup>1</sup>/<sub>4</sub> Sec 21

BTs Ag 4 S 30° W 24 lks

Tax 5 N 48° E 79 <sup>1</sup>/<sub>2</sub> lks

SW cor Sec 21

BTs Cedar 5 S 11° W 32 <sup>1</sup>/<sub>4</sub> lks

" 6 N 48° E 27 <sup>1</sup>/<sub>2</sub> lks

C<sup>1</sup>/<sub>4</sub> Sec 22 BTs

To 10 S 20° E 10 <sup>1</sup>/<sub>2</sub> lks

To 8 N 75° E 72 lks

SE<sup>1</sup>/<sub>16</sub> Sec 22

BTs Pr 12 N 61° E 1.14 chs

Ag 8 S 42° E 74 <sup>1</sup>/<sub>4</sub> chs

Finished Feb. 1961

Sec 20-37-9

Guddard & crew - March 1961

Drivas & crew -

Lefts Setting corners South line

Random North from S<sup>1</sup>/<sub>4</sub> Sec 20

Bring 7° 15' mag -

78.605 chs set N<sup>1</sup>/<sub>4</sub> 4.04 lks

West

Chaining North from S<sup>1</sup>/<sub>4</sub> (old

corner in swamp)

2.53 chs leave swamp

5.78 " enter "

14.97 " leave "

19.445 " closed out 1/4 East of

Vaughans C-S<sup>1</sup>/<sub>16</sub> (old BT)

BTs

25.72 chs enter swamp

30.00 " leave "

38.89 " Set c<sup>1</sup>/<sub>4</sub> in Road 2 lks West

BTs Maple 6 S 27° E 7 <sup>1</sup>/<sub>4</sub> chs

Bw 5 N 23° W 1.01 chs

43.78 chs enter field

46.14 " leave field

58.74 <sup>3</sup>/<sub>4</sub> " Set C-N<sup>1</sup>/<sub>16</sub> 2.9 lks West

BTs Pr 6 N 15° E 52 <sup>1</sup>/<sub>2</sub> lks

Pw 10 S 69° W 67 <sup>1</sup>/<sub>2</sub> lks

Cont. next page



Cont Sec 20-37-9

78.605 chs N 1/4 Set ref pipe 25 1/2 kts So.  
of corner location  
BTS Bw 8 S55° E 1.285 chs.  
Maple 6 S33° W 83 1/2 kts  
Corr Brng N 7° 13' E

Random West from the E 1/4  
Brng ~~272° 40'~~ 272° 40' mag.  
89.92 closed out 29 1/2 kts. North  
Corr Brng N 87° 31' W  
Chaining West

12.70 chs. d. Pine Lake road  
16:00 " Leave Town road  
20.00 " on E-W road  
22.22 chs set c-E 1/4 7.1 kts South  
BTS Bw 6 N 26° E 61 1/2 kts  
Pole N 80° W 1.55 chs.  
Set ref. pipe <sup>32.6</sup> 32.6 kts North  
South of  
pin in road.  
44.44 chs. Set c 1/4 in road  
Set ref. pipe 50 kts south of  
pin in road  
48.70 chs. Leave road  
51.55 " enter swamp  
56.64 " leave " "  
59.04 " enter pot hole

14

cont next page. (NOTE: SEE PAGE 2)  
SEE PAGE 2  
SEE PAGE 2

Cont Sec 20-37-9

60.69 chs. Leave pot hole  
27.18 chs set c-w 1/6 21.6 kts So-  
BTS Maple 5 N 33° E 24 kts  
Maple 7 N 68° W 11 1/2 kts  
89.92 Total

Random East from the N 1/4 S. 20  
Brng 88° 45' mag.  
Chaining East along road

7.00 chs Center of road  
21.47 set E 1/6 No line pin  
in E of road  
BTS Pw 9 S 18° E 43 1/2 kts  
Pw 7 S 40° W 45 3/4 kts  
27.40 chs at swamp  
42.94 old Sec Cor on line 2<sup>nd</sup> T.P.  
Old 2<sup>nd</sup> TP 12/16  
& W.P. 20/22 BTS Sb 4 S 16° E 8 1/2 kts  
Tan 5 N 4° E 34 1/2 kts  
Sb 6 S 86° E 33 1/2 kts  
Corr Brng N 88° 45' E

Random North from E 1/4 Brng 5° mag.  
E 1/4 BTS Maple 4 N 37° E 26 1/2 kts  
Bw 6 N 25° W 37 1/2 kts  
41.99 closed out 1/4 chs East of sec Cor.

Cont next page.

15

Cont Sec 20-37-9

Chaining North from E 1/4 in  
Hardwoods

11.55 chs enter swamp

20.995 chs set N 1/10 E line 50 1/2 lks  
West

BTs 563 N 10° E 25 1/2 lks

No other BT near all small  
saplings

41.99 Total to Sec Cor

Corr Brng. N 3° 37' E

Random South from E 1/16 North line  
Brng 184° 30' mag

40.85 chs closed out 37 lks East

Chaining South

17.38 chs enter swamp

20.425 chs set N E 1/16 18 1/2 lks West

BTs Pn 14 S 30° E 46 1/2 lks

Pw 8 S 53° W 68 lks

20.60 chs leave swamp

21.43 " enter "

24.58 " leave "

25.63 " enter "

28.94 " North side of Lake

33.80 " South side of Lake

cont next page

16

Cont sec 20-37-9

34.56 chs leave swamp

40.85 closed out 37 lks East of C-E 1/16  
Corr Brng. S 55° 00' W

Random North from W 1/4 Brng 2015' mag

40.155 chs closed out 2.00 chs West  
of sec cor.

20.0775 chs set N 1/16 West line  
1.00 ch East

BTs Pn 6 S 19° E 48 1/2 lks

Pn 10 S 78° E 68 lks

Corner sets on edge of beach  
near water line

40.155 closed out 2.00 chs West of Sec Cor  
Corr Brng. N 5° 06' E

Random West from N E 1/16 Brng 270° 30'

21.84 closed out 50 lks South

chaining West to C-N 1/16

6.95 chs leave swamp

9.11 chs enter pothole

11.17 chs leave " "

15.76 chs enter " "

17.21 chs leave " "

Corr Brng. N 88° 11' W

Cont next page

17

Cont Sec 20. 37-9

Random West from C-N 1/16

Brng 272° 30' mag.

47.61 closed out 82 1/2 lks So.

23.805 set NW 1/16 41 1/4 lks No.

BTs Cor 4 N 85° W 15 lks

Tan 5 N 87° E 31 1/2 lks

Chaining West

2.00 chs enter swamp

7.77 " leave "

17.65 " enter "

27.24 " leave "

34.30 " enter "

36.60 " leave "

39.37 " enter "

44.50 " leave "

47.61 Total

Corr Brng. N 86° 30' W

Random South from the NW 1/16

Brng 184°

19.97 closed out 1.08 chs west

Corr Brng - S 4° 54' W

18

Cont next page

Cont Sec 20. 37-9

Random East from S 1/4 S. 19 Brng

88° 30' mag -

3.00 to West side of River

3.78 to East " "

27.63 chs open Bog

30.00 chs leave Bog

32.61 chs To Back Water

38.34 chs leave " "

38.93 chs offset 10.9 lks North

40.42 chs to Back water

45.47 chs. offset .159 chs No.

47.13 " enter Boom Lake

51.13 " leave " "

57.18 " & cottage road

60.925 " offset 4.002 chs No.

65.63 " enter alder

81.14 Total

Dept South 3.05 25 chs offsets

Deducted

20.91 chs set E 1/16 So line sec 30 72.65 78.25 lks No.

BTs Maple 7 N 38° E 30.0 lks

Pr 5 S 77° W 66 1/2 lks

41.82 Sec Cor 1.464 chs North 77.20 75.49

BTs Pr 10 S 47° W 66 3/4 lks

Pr 13 N 58° E 46 1/2 lks

Co 6 N 20° W 24 1/4 lks

Cont next page

19

Cont Sec 20-37-9

66.48 set with Sec 20 1.956 chs

So. of offset random

B.T.s (I.P. set)

Sb6 S27°W 27.4 lks

Sb3 N46°W 32.5 lks

31.197 True line length

41.85 True line length to sec cor

Corr Brng. N86°21'E

1 Random west from C-5 1/16

2 Brng. 271°34' mag.

3 42.34 chs closed out 12 lks so

4 of 5 1/16 west line

3 21.17 chs set SW 1/16 (Pin in So.

4 edge of Sam Cooper's road.

4 B.T.s Pw 22 N31°E 1.185 chs

Oak 7 N18°W 79 3/4 lks

4 Corr Brng. N88°16'W

Random South from the C-W 1/16

Brng. 183°15' mag.

Computed distance 19.99 1/4 chs

1820 Cont next page

Cont Sec 20-37-9

Random South from W 1/4

Brng. 181° mag.

41.04 chs closed out 1.21 chs

West of Sec. Cor.

20.52 set 5 1/16 West line 20.5 lks East

B.T.s Pn 14 S60°W 56 lks

Maple 6 S59°E 4 1/4 lks

W 1/4 B.T.s Maple 6 S7°W 52 lks

Maple 4 S84°W 38 lks

old corner & B.T. stump

Corr Brng. S80°41'E

Finish March 1961

One square acre in the SE corner of the SW NE needs surveying - (we do not own it.)

Note this done -

Set pipe 3.162 chs North along line thence west 3.162 chs to a pipe thence south to road.

Note: C 1/4 Pin & reference }  
CE 1/16 " " }

taken out by "Pine Lake" road work

21 established by hand compass & chain - 9-9-68

Sec 19 T35N R10E

Drives on Transit

Random North from the S<sup>1</sup>/<sub>4</sub>  
between S<sup>1</sup>/<sub>30</sub> Brng 355° 47' mag.

81.0775 chs. closed out 74 1/2 lks  
West of H.C. Lawrence N<sup>1</sup>/<sub>4</sub>  
Corr Brng N 3° 41' 25" W  
Corr Dist. 81.082 chs.

Chaining North

1	14.20 chs	leave Swamp	
2	14.98 chs	enter field	
3	16.40 "	leave "	
3	40.40 "	enter swamp	
3	61.10 "	leave "	BTs
4	66.83 "	enter "	S <sup>1</sup> / <sub>4</sub> BTs
4	67.72 "	leave "	BTs
	74.00 "	enter "	S <sup>1</sup> / <sub>4</sub> BTs
	78.25 "	leave "	BTs
	20.465 chs	Set C-S <sup>1</sup> / <sub>16</sub> 0.188 chs East	BTs
		BTs Bw3 N 25° E 18 lks	
		Ms 7 S 26° W 45 1/2 lks	
	40.93 chs	N <sup>1</sup> / <sub>4</sub> set C <sup>1</sup> / <sub>4</sub> 0.376 lks East	
		BTs Bf6 S 22° E 34 lks	
		Bf6 N 0° E 11 1/4 lks	
	N <sup>1</sup> / <sub>4</sub> BTs	Maple 2 N 22° W 12 lks	
		Maple 3 S 45° W 45 lks	

Cont next page

Cont. Sec. 19-35-10

61.00 chs set C-N<sup>1</sup>/<sub>16</sub> 56 lks E  
BTs Cedar 6 S 64° W 52 1/2 lks  
Tam 4 S 54° E 53.6 lks

Random West from E<sup>1</sup>/<sub>4</sub> Sec. 19  
Brng 273° 56' mag.

Note: 4x4 old cedar stake -  
Remnants of old N & S fence So  
of cedar stake BTs Maple 6 S 10° W 23 lks  
" 5 S 76° W 53 1/2 lks

Ag with squared post spiked  
to it on ground cut by H.C.  
Lawrence when he ran north.

85.56 Total dist. closed out 2.445  
chs North

20.105 chs set C-E<sup>1</sup>/<sub>16</sub> & 5745 chs  
south BTs Fb S 36° W 3.6 lks  
Fb S 57° E 45 1/2 lks

40.21 chs C<sup>1</sup>/<sub>4</sub> 1.149 chs So.  
BTs as previous page

60.315 chs set C-W<sup>1</sup>/<sub>16</sub> 1.723 chs So.  
BTs Ms 5 N 41° W 13 lks  
Ms 4 N 62° E 9 1/4 lks  
Ms 6 S 35° W 30 1/2 lks

Corr Brng N 87° 42' W

Cont Next Page

Cont. Sec 19-35-10

Random North from W 1/16 S 19/30

Brng. 360° 20' 09" mag.

40.27 chs closed out 0.64 chs West

Chaining South

12.00 chs enter swamp

17.90 " leave "

20.135 chs set SW 1/16 3.2 1Ks East

BTs Cedar 4 N 88° W 4 1/2 Ks

Maple 5 S 31° E 7 1/2 Ks

24.70 chs enter swamp

26.29 chs leave "

Corr. Brng. N 0° 25' 38" E

Random West from SW 1/16 to S 1/16

west line Brng. 273° 02' 56" mag.

25.47 closed out 1.87 chs No.

Chaining East

7.65 chs. offset 25 Ks. North

15.00 chs enter cedar swamp to

corner

Corr. Brng. N 87° 22' 18" W

24 Cont next page

Cont Sec 19-35-10

Random North from E 1/4 to

Sec Cor 18/17

BTs corner by H.C. Lawrence  
224 52° E 14 1/2 Ks

Brng. 357° 56' 30" mag.

39.84 closed out 11.1 Ks West

Chaining North

2.00 chs enter swamp

16.00 chs leave "

19.92 chs set N 1/16 E line 5 1/2 Ks Ea

BTs Maple 10 S 48° W 23 Ks

Maple 4 S 50° E 31 Ks

24.00 chs enter swamp

30.00 " leave "

31.10 " @ woods road

36.00 " enter swamp to corner

Corr. Brng. N 1° 54' 01" W

Random West from N 1/16 East line

west to C- N 1/16 Brng

272° 30' 46" mag.

40.751 closed out 3 1/2 Ks North

Chaining West

4.18 chs leave swamp

9.47 " @ woods road

20.3755 chs set NE 1/16 1 3/4 Ks S

BTs Fb 7 S 84° W 5.7 Ks

Fb 6 S 10° E 34.3 Ks

Cont next page

25

62-23-39-8

Cont Sec 19 - 35 - 10

25.32 chs enter swamp

3.65 " leave "

Corr Brng  $N87^{\circ}32'14''W$

Brng Trees for  $1/4$  19/20

Maple 8  $S16^{\circ}W$  23 1/2 Iks

" 6  $S14^{\circ}W$  54 1/4 Iks

Random South from NE 1/16 South  
to CE 1/16 Brng  $177^{\circ}03'43''$   
~~to~~ chaining North

6.85 chs enter swamp

17.15 " leave "

19.995 " closed out 5.2 Iks East

Corr Brng  $S2^{\circ}47'17''E$

Random West from C-N 1/16 to  
N 1/16 West line Brng  $272^{\circ}00'09''$

43.825 chs closed out 16 Iks South

Corr Brng  $N87^{\circ}47'18''W$

20.3755 set NW 1/16 8 Iks North

BTs Cedar 6  $S86^{\circ}E$  9.5 Iks

Cedar 8  $S71^{\circ}W$  26 Iks

Chaining West

31.855 chs enter swamp

Cont next page

Cont Sec 19 35 - 10 E

33.00 chs leave swamp

37.60 " enter "

53.60 " & creek

60.72 " leave swamp

Random North from CW 1/16 to NW 1/16

Brng  $355^{\circ}33'30''$  mag.

20.10 chs closed out 2 Iks West

Corr Brng  $N4^{\circ}25'W$

Random West from S 1/4 Sec 19 (Dorris)  
old Post Brng  $272^{\circ}30'$  mag.

48.52 chs closed out 95.8 Iks So.

including a 17.8 Iks offset

chaining East

3.61 chs leave swamp

9.66 " offset 17.8 Iks North

25.578 chs set W 1/16 So line 45.29 Iks No.

BTs Maple 8  $N43^{\circ}W$  32 Iks

Maple 10  $S55^{\circ}E$  23 Iks

38.52 chs & woods road

48.52 " total

Corr. Brng  $N86^{\circ}22'W$

Sec Cor 24/19

25/30

BTs Ta 6  $S50^{\circ}W$  16 1/2 Iks

Ta 4  $S36^{\circ}E$  25 Iks

Cont next page

Cont Sec 19-35-10

Random North from  $\frac{24}{25}$   $\frac{19}{30}$  to  
S  $\frac{1}{16}$  West line Brng  $N 2^{\circ} E$

Chaining South

1.30 chs enter swamp

3.30 " leave "

6.60 " enter "

16.02 " leave "

17.60 " enter swamp to sec. corner

19.796 Total Dept East 47 lks

Main distance 19.8475

Ripco 19.796

.0515 diff

Corr Brng  $N 0^{\circ} 38' 25''$  East

Finished March 1961

S  $\frac{1}{16}$  West line

Bts Hem 18  $S 64^{\circ} E$  40.5 lks

Post 12  $N 26^{\circ} E$  37 lks

Sec 31-38-11

Nov 27-1961

Goddard Ellier Berg Bernstein Follstad

Random North from SW cor

Sec 31 Brng  $359^{\circ} 15'$  mag

43.98 closed out  $17\frac{1}{2}$  lks East  
of  $\frac{1}{4}$  corner

Chaining North

8 chs enter swamp

9.20 chs leave "

12.65 chs  $\&$  white spruce fire lane

21.99 chs set S  $\frac{1}{16}$  East line

8.75 links west

Bts Maple 3  $S 75^{\circ} E$   $4\frac{3}{4}$  lks.

" 4  $N 23^{\circ} W$  54 lks.

Pipe set Bts not scribed

33.00 chs enter swamp

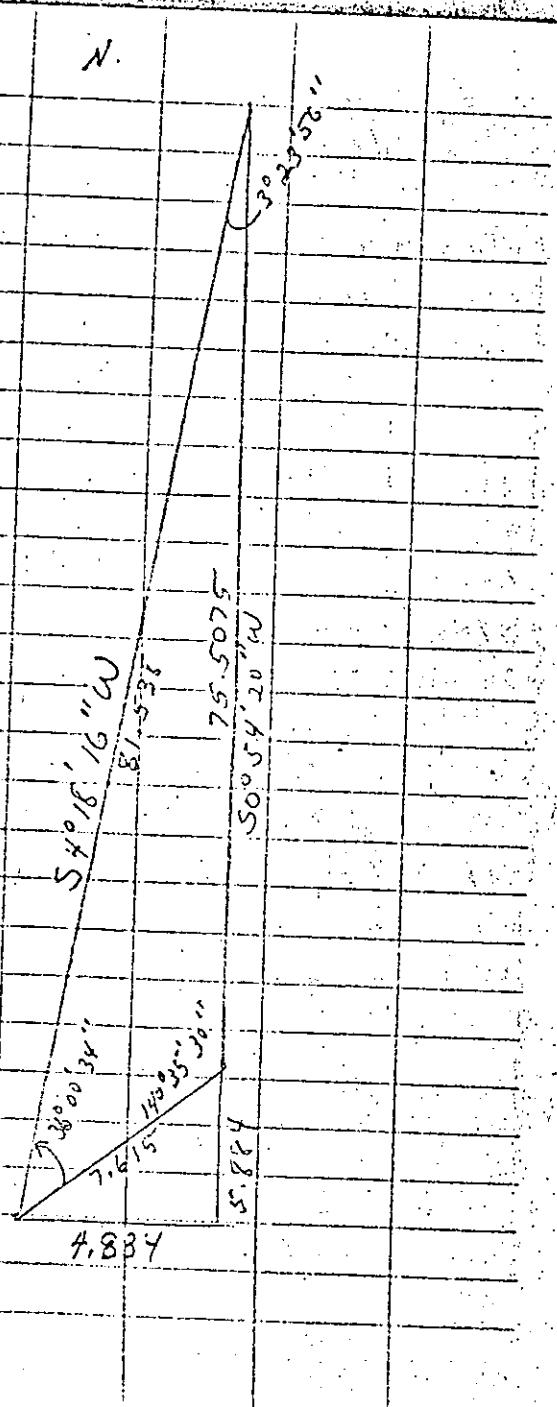
39.65 " leave "

43.10 " enter " to  $\frac{1}{4}$  cor

Corr Brng  $N 0^{\circ} 58' W$

See pages 80-84, Oneida Book #2,  
for other information on this section





Nov Dec 1961

Section 18-37-9

Drives on transit.  
 Field work in most checked by N. Liffers  
 Crew Alexander Bernstein Coleman

Random South from NE corner -  
 This corner reestablished from  
 one orig BT.

New BTs. Pw 10 S38° E 113/4 Ks  
 Pj 6 N37° W 72 3/4 Ks

On Brng of 50° 54' 20" W at  
 75.5075 turned defl Angle Left  
 of 140° 35' 30" mag 7.615 chs to  
 Sec Cor. 18/17

Corr Brng. 54° 18' 17" W  
 Corr Distance 81.538

20.384 set N 1/16

BTs Sb 5 S20° E 74 Ks  
 Sb 5 N88° W 68 1/2 Ks

40.768 set 1/4 betw 18/17

BTs Ta 8 N46° W 33 1/4 Ks  
 BT. Ta 5 N24° E 52 1/4 Ks

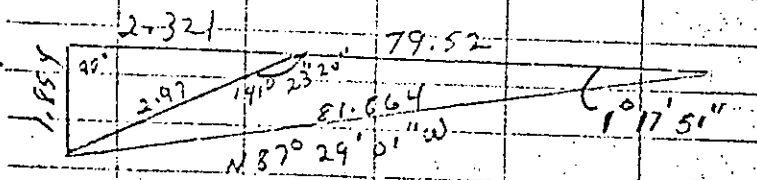
61.152 set S 1/16 3.6255 chs West

BTs Pw 20 N72° W 96 Ks  
 Pw 7 S37° W 22 1/2 Ks

See opposite page

Cont Sec 18-37-9

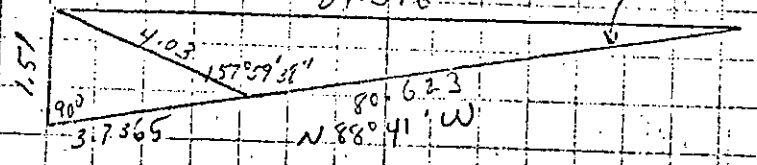
Transit on  $\frac{18}{17}$  Back sighted  
 Deft. turned  $\angle$  left of  $126^{\circ}30'$   
 of  $N 86^{\circ}11'44''W$ , at  
 79.52 turned right  $141^{\circ}23'20''$   
 2.97 chs to Sec. Cor.  
 Corr. Bng.  $N 87^{\circ}29'01''W$   
 Corr. Distance 81.864  
 19.93 set E  $\frac{1}{16}$  so line  
 BTs Ta 3  $S 52^{\circ}E$  17.1 ks  
 Ta 3  $S 89^{\circ}W$  60.5 ks  
 39.86 set S  $\frac{1}{4}$   
 BTs Sb 4  $S 26^{\circ}W$  23.3 ks  
 Ta 4  $N 50^{\circ}W$  51.5 "  
 Ta 3 North 36.5 ks  
 59.79 set W  $\frac{1}{16}$   
 BT Pw 6  $S 60^{\circ}E$  28.9 ks  
 Or 6  $S 76^{\circ}E$  22.5 ks



Cont next page

Cont Sec 18-37-9

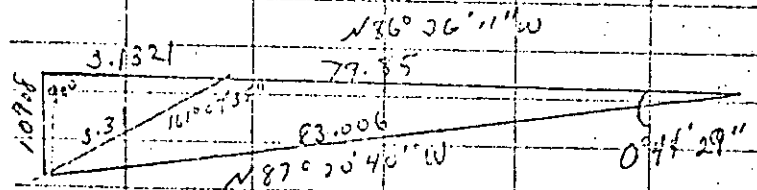
Transit on  $\frac{7}{18}$  sighted random  
 turned right  $90^{\circ}24'40''$  or  
 $N 88^{\circ}41'00''W$  at  
 80.623 turned left  $157^{\circ}59'38''$   
 to sec. Cor. a distance of 4.03 chs.  
 Corr. Bng.  $N 87^{\circ}39'27''W$   
 Corr. Distance 84.376 chs  
 20.515 set E  $\frac{1}{16}$  .3672 chs North  
 BTs Pw 7  $N 86^{\circ}W$   $11\frac{1}{4}$  ks  
 Pw 7  $S 24^{\circ}W$  64 ks  
 41.030 set N  $\frac{1}{4}$  .7344 North  
 Maple 5  $N 52^{\circ}E$  25 ks  
 Maple 5  $S 55^{\circ}W$  20 ks  
 61.545 set W  $\frac{1}{16}$  1.1016 chs No.  
 Maple 5  $S 70^{\circ}E$  25  $\frac{1}{2}$  ks  
 Oak 5  $N 8^{\circ}E$   $11\frac{1}{2}$  ks  
 $N 87^{\circ}39'27''W$  .001'33"  
 84.376



Cont next page

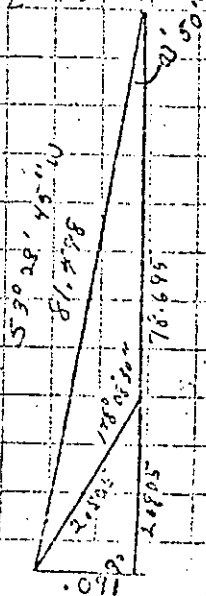
Cont Sec 18-37-9

Set Transition E 1/4 turned  
 Right from 90° mark 182° 29' 29"  
 a N 86° 36' 11" W  
 79.85 turned right 161° 07' 35"  
 a distance of 3.31 chs to  
 West 1/4 in road -  
 Corr. Brng N 87° 20' 40" W  
 Corr. Dist. 83.006 chs.  
 20.226 Set C-E 1/16 sets in  
 creek flowage No. BTs.  
 40.452 set c 1/4  
 BTs Cedar 5 N 36° W 50 lks.  
 Sb. 5 S 42° W 32 lks.  
 S to M.C. 0.645 chs. North of c 1/4  
 on true line  
 60.678 Set c-w 1/16 Note (Not set)



Cont Sec 18-37-9

Transition N 1/4 corner Backsight  
 90° mark on random & defect  
 West 2° 09' 14" or S 3° 28' 14" W  
 78.695 turned left 178° 06' 30" a  
 distance of 2.805 chs.  
 Corr. Brng 53° 28' 14" W  
 Corr. Dist. 81.498 chs  
 Note: due to extreme hills had an  
 error in actual chaining  
 20.2625 N 1/16 did not set.  
 40.525 C 1/4 sets in creek 25 pole in creek  
 60.90 set c-s 1/16  
 BTs Ta 4 N 11° W 42 1/2 lks (inf. marked)  
 Pw 10 N 39° E 45 "



34

Cont next page

35 Cont.

Random East From C-S 1/16

Bearing  $N 87^{\circ} 20' 40'' W$

Note - This random was started

12.15 lks to far North.

40.156 chs closed out 27.5 lks  
North.

20.078 set SE 1/16

BTs - Sb 3  $N 5^{\circ} W$  8.5 lks

Ta 8  $S 81^{\circ} W$  17 lks

Random North from SE 1/16

Bearing  $N 3^{\circ} 52' 46'' E$

20.38 chs intersect C-E 1/16 m

line - offset 13.11 lks East at

5.825 chs North

Changes for South line

3.15 enter pine ridge 48.50 - swamp

4.00 enter lake 49.00 Lake

11.95 chs leave lake 52 leave lake

23.00 CL creek 54.00 leave swamp

31.30 ridge

35.35 swamp

36.75 L creek

42.00 ridge

Random North from S 1/4 Sec

19 checking on S 1/4 Sec 18.

41.24 chs North of MC at center

Sec 19 closed out 42.31 chs

west of  $\frac{1817}{19120}$  or 2.45 chs

west of our single proportioned

S 1/4 - This was merely a  
check for this 1/4 corner

All pipes necessary are set

Stamped & BTs are in

Finished Jan 1962

C-N 1/16 Sec 19 T.37N R.9E

BTs PW 10  $N 70^{\circ} E$  55 lks

Sb 8  $S 54^{\circ} W$  15 3/4 lks

{See page 6, Orinda Book # 2}

Sec. 5 - T36N R11E

Leffler & crew Feb 1962

Read Brng on Road at  $\frac{6}{5}$   
 $\frac{7}{8}$

$355^{\circ} 10'$  mag

Turned  $\angle$  Right to  $87^{\circ} 10'$  &

ran East 40.235 closed out

4.545 chs North of  $\frac{1}{4}$  cor

Cor Brng  $6^{\circ} 26' 40''$  to a

Brng of  $93^{\circ} 36' 40''$  & run

40.495 chs hit  $\frac{1}{4}$  corner  $\frac{5}{8}$

dead center

Chaining from  $\frac{5}{4}$  West

4.00 chs enter swamp

18.00 chs leave "

20.17 H. C. Lawrence  $\frac{1}{16}$  4.5 lks

North

20.24  $\frac{3}{4}$  S.  $\frac{1}{4}$  E.P. for corner  $\frac{1}{16}$

BTs Birch 8 N  $76^{\circ}$  E 21  $\frac{1}{16}$  lks

Birch 8 N  $74^{\circ}$  W 19  $\frac{1}{2}$  lks

30.75 enter swamp

36.97 to hay meadow Creek

40.495 Sec. Cor.

$\frac{5}{4}$   $\frac{5}{8}$  BTs Ash 12 S  $20^{\circ}$  E 34 lks

Ash 12 N  $44^{\circ}$  W 41.5 lks

Cont next page

Cont Sec 5-36-11

Random East From w/4 Brng  
 90° 09' mag  
 84.4075 chs closed out 1.57 chs No.  
 Corr Brng 588° 47' E  
 Chaining west & setting corners  
 4.00 chs enter swamp  
 6.00 " leave " enter clearing  
 18.00 " leave clearing  
 20.96 set C-W 1/6 30 1/2 lks So.  
 BT A: 4 N 12° E 24 lks.  
 Sw 2 N 47° W 80 lks.  
 41.92 chs set C 1/4 7995 chs So.  
 BTs Birch 4 N 30° W 44 lks.  
 Sw 2 N 35° E 60 1/2 lks.  
 55.06 chs of Hay meadow  
 63.164 chs set C-E 1/6 1.175 chs So.  
 BTs Birch 5 N 24° W 24 lks.  
 Maple 3 S 46° E 37 lks.  
 82.80 chs change N.W. BR  
 84.4075 E 1/4 Iron Pipe & BTs (Country)

Cont next page

Cont, Sec 5-36-11

Random North From S 1/4  
 Brng 358° 30' mag.  
 73.26 chs closed out 2.315 chs  
 East  
 Corr Brng N 3° 18' 30" W.  
 Chaining North & setting corners  
 9.15 ch. 1 leave swamp  
 20.515 chs set C-S 1/6 64.5 N 1/2 W.  
 BT. Aspen 3 S 86° E 6 lks  
 Aspen 3 N 68° W 18 1/2 lks  
 25.00 chs enter creek bottom  
 29.90 chs of Hay meadow  
 32.00 " enter field  
 40.75 " leave field  
 41.03 set C 1/4 1.296 chs West  
 44.90 logging road  
 46.70 open bog  
 50.54 leave bog  
 57.40 of woods road  
 62.00 enter swamp  
 63.90 leave "  
 73.26 total N 1/4 in together stinger  
 C 1/4 So. 41.03  
 C 1/4 No. 32.23  
 C 1/4 W. 41.92  
 C 1/4 E. 48.4875  
 Cont next page

Cor Sec 5-36-11

Random South from C-E 1/16

Brng 176° 40' mag

38.35 closed out 77 lks East

Corr Brng 52° 11' E

Chaining South

8.40 chs enter swamp

7.60  $\frac{1}{2}$  creek 10 lks wide

10.70  $\frac{1}{2}$  creek " " "

19.175 set SE 1/16

BTs Spruce 5 N 14° E 5 1/2 lks

" 5 S 8° W 58 lks

Random West from SE 1/16 Brng

265° mag

20.905 closed out 20 lks Nor

Corr Brng 587° 27' W

Finished Feb 1962

All corners set lincs  
blazed & painted

Sec 18-38-10

Goddard & crew Nov 1961

Fragment Survey

Random East from W 1/4 cor.

Brng 91° 30' mag

80.72 closed out 117 chs North  
of E 1/4

Corr Brng 587° 40' E

40.89 set C 1/4 59 1/2 lks No

BT. Tab 5 554° E 146 chs

80.72 Total

Rechained N-S 1/4 line run

by Loftus & set C-S 1/16 at

63.525 chs So of N 1/4 2.1886 chs

East of random

BTs Tab 6 526° W 44 lks

Tab 6 N 70° W 48 lks

C 1/4 is 44.04 chs S of N 1/4 cor.

Random East from C-S 1/16

Brng 93° 05' mag

49.33 closed out 69 lks So.

Corr Brng 577° 54' E

Cor + Sec 15-35-10

chain in East  
 5.30 chs leave swamp  
 13.60 " enter "  
 15.28 " to creek  
 20.165 set SE 1/16 34 1/2' to No  
 B's Cedar 7 S 1/4 E 45' 15"  
 Sb 4 N 6' W 32 1/2' to  
 20.35 leave swamp  
 27.65 to road  
 28.25 enter swamp  
 28.50 leave swamp  
 40.33 total  
 lines corr. corners set  
 Finished Nov. 1961

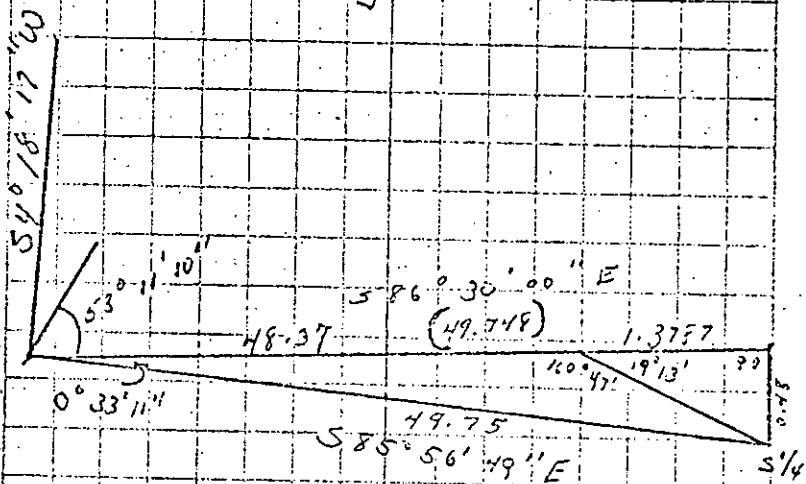
see page 6, Ottawa Book # 2

44

Sec 17-37-9

Drivas & crew Jan Feb 1962

Random East From SW 3/4  
 Cor. Brng  $S 86^{\circ} 30' 00'' E$   
 Transit on Sec Cor. turned angle  
 right of  $53^{\circ} 11' 10''$   
 48.37 chs - turned angle left  
 of  $160^{\circ} 47'$  for a distance of  
 1.46 chs to S 1/4.  
 See diagram



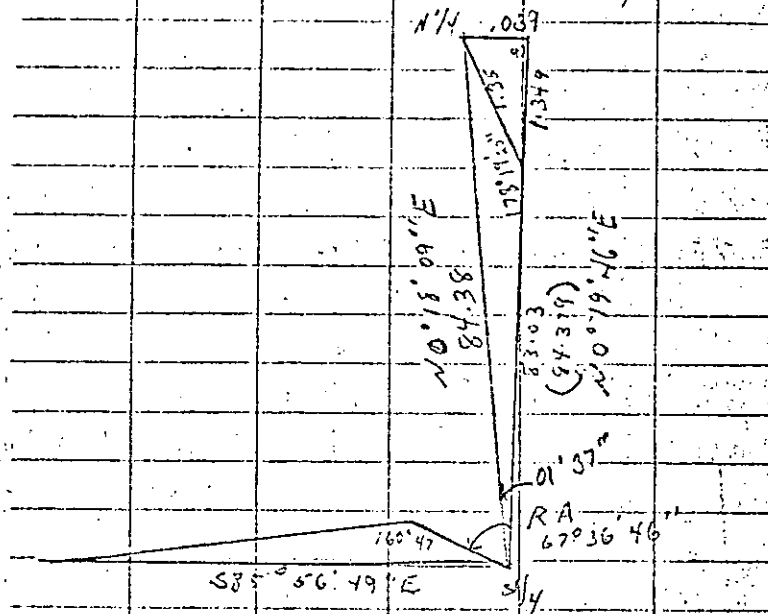
Then set transit on S 1/4 turned  
 angle right of  $67^{\circ} 03' 46''$   
 83.03 chs turned deflection right  
 of  $178^{\circ} 19' 20''$  a distance of  
 1.35 chs to N 1/4.  
 Cor Brng  $N 0^{\circ} 18' 09'' E$  see  
 diagram next page

45

Cont next page



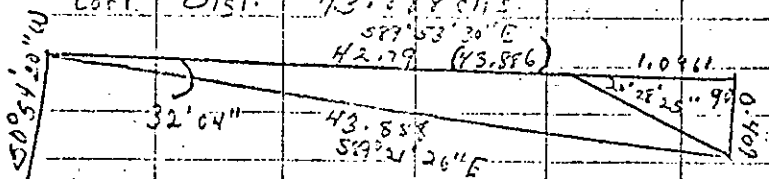
Cont sec 17-37-9



With transit on N.W. cor turned  
 Angle to brng. of  $589^{\circ} 53' 30'' E$   
 42.79 deflected right  $20^{\circ} 28' 25''$   
 a distance of 117 chs. to N  $1/4$  cor.

Corr. Brng.  $589^{\circ} 21' 26'' E$

Corr. Dist. 43.888 chs.



Cont next page

Cont Sec 17-37-9

Chaining & setting corners w/2  
 Sec 17

Chaining North from  $1/4 \frac{17}{20}$

48.00 chs. enter swamp  
 49.77 chs.  $\swarrow$  Pine Lake Creek  
 54.52 chs. leave swamp  
 57.87 chs.  $\swarrow$  town road  
 84.379 chs. total distance  
 .039 chs. dept. East.

21.40 chs. set c-s  $1/16$  North & 01 ch West  
 BTs Oak 13 N  $77^{\circ} W$  83 lks.

Oak 11 South 1.07 ch.

42.80 set c  $1/4$  102 chs West  
 BTs

63.5895 chs. set c  $1/16$  .0297 chs West  
 Pin in road

Pipe & cap set 50 lks West

BT. Pr 11 S  $46^{\circ} E$  99  $1/4$  lks.

Chaining East from  $\frac{18}{17} \frac{17}{20}$

20.73 chs. leave swamp  
 24.874 set w  $1/16$  24 lks SO

BTs Oak 8 N  $20^{\circ} W$  31 lks.

Maple 4 S  $50^{\circ} W$  45 lks.

Cont next page

Cont sec 17-37-9

Chaining East from  $\frac{718}{1817}$

6.00 chs leave woods road  
 21.943 set w  $\frac{1}{16}$  .2046 chs So.  
 B.Ts Pj 4 S  $83^\circ E$  37 lks.  
 Pj 4 S  $20^\circ W$   $58\frac{1}{4}$  lks.  
 30.35 chs. S. edge of swp.  
 32.59 chs enter swamp  
 37.00 chs leave swamp  
 38.18 chs. L woods road  
 41.00 " enter swamp  
 43.886 " N  $\frac{1}{4}$  cor.  
 B.Ts Pr 7 N  $64^\circ W$  .40 chs.  
 Pr.  $3\frac{1}{2}$  S  $10^\circ W$  .165 chs.

transit set on S  $\frac{1}{4}$  Brng.  $17/16$   
N  $89^\circ 56' 30'' E$  To  $20/21$

line run in 1960 by Goddard  
 transit set on  $\frac{17}{16}$  Turned  $\leftarrow$  Right  
 of  $90^\circ 17' 00''$  thence north  
 80.878 thence deflecting Right  
 $9^\circ 05' 20''$  a distance of 2.992  
 chs to the NE cor

chaining North -  
 10.00 chs leave swamp  
 11.78 chs to offset 16.6 lks East

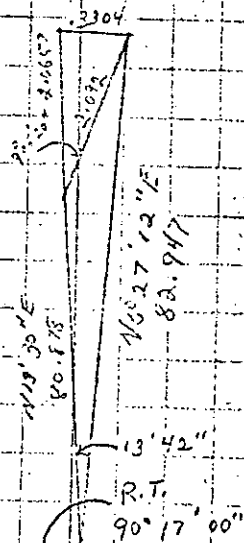
48

Cont next page

Cont sec 17-37-9

17.065 chs offset west 16.6 lks  
 20.7359 chs set S  $\frac{1}{16}$  .083 chs East  
 B.Ts Pr 14 S  $25^\circ W$  1.675 chs  
 1 Sb 2 S  $89^\circ 30' W$  60 lks  
 21.10 chs L road  
 29.11 chs. enter road  
 38.24 " L creek  
 39.95 " L creek  
 41.472 " set E  $\frac{1}{4}$  16.5 lks East  
 set ref. p<sup>100</sup> set 4x4 Tam. post in creek  
 50 lks East Set 4x4 Tam. post in creek  
 of corner 10 units 100  
 bottom No. B.T. available  
 62.208 " chs N. N  $\frac{1}{16}$  - Not set.

old 2" IP old  
WP & seccor.



S  $\frac{1}{4}$  N  $89^\circ 56' 30'' E$   
42.94

2110  
2573.00  
3683

49

Cont next page

Cont Sec 17-37-9

Random East from W 1/4 Brng.

588° 18' 26" E

89.49 chs deflected left 43° 40"  
a distance of 2.44 chs to  
the E 1/4

Corr distance 89.93 chs

Corr Brng 588° 19' 37" E

Chaining East

7.00 chs leave swamp

23.4175 chs set C-W 1/16 .8 1/4 North

BTs Maple East 14 lks

P 9 1/4 2° W 10 lks

46.835 chs set C 1/4 1.6 1/4 North  
BTs

50.00 chs enter swamp

66.15 chs & creek

68.30 " & "

68.382 chs set C E 1/16 in creek  
2.35 lks. No  
No BTs available Ref Pipe set  
50 lks. North.

73.50 chs & creek

77.50 chs & road

81.28 " & Pine Lake Rd.

89.929 " Total

50

cont next page

Cont Sec 17-37-9

Random South from C E 1/16

Brng 50° 25' 37" W

Left angle turned from  
E-W 1/4 line 91° 15' 57"

42.15 chs closed out 2 lks W  
chaining South

4.90 chs enter spruce swamp

10.00 " leave " "

21.075 chs set S E 1/16

BTs Birch 5 N 40° E 46 lks.

Oak 12 S 43° E 60 3/4 lks

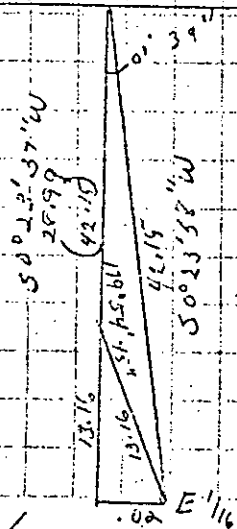
35.00 chs - enter bog

38.50 " leave "

42.15 " Total

C 1/4 N 88° 18' 26" W C E 1/16

E 1/4



51

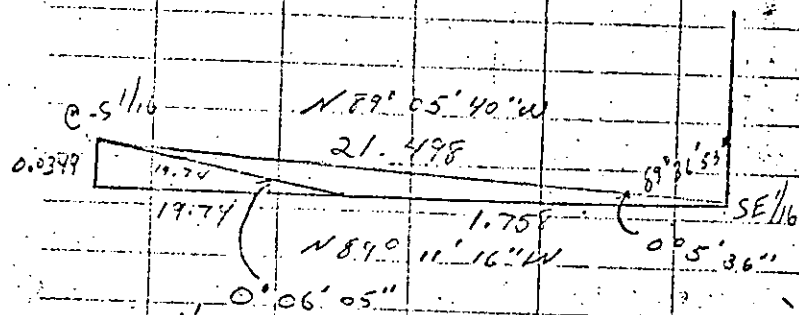
cont next page

Cont sec 17 T 37N R 9E

Random west from SE 1/16

Brgy N 89° 11' 16" W

21.498 closed out 3.49 lks So.



SE 1/16

B.T.s:

Birch 5 N 40° E 46 lks.

Oak 12 S 43° E 60 3/4 lks.

Random East from s 1/16 west line

Brgy N 89° 05' 57" W

24.1165 chs set SW 1/16

B.T.s Oak 10 N 50° W 34 3/4 lks.

Oak 6 N 7° E 44 1/2 lks.

48.233 Total distance

52

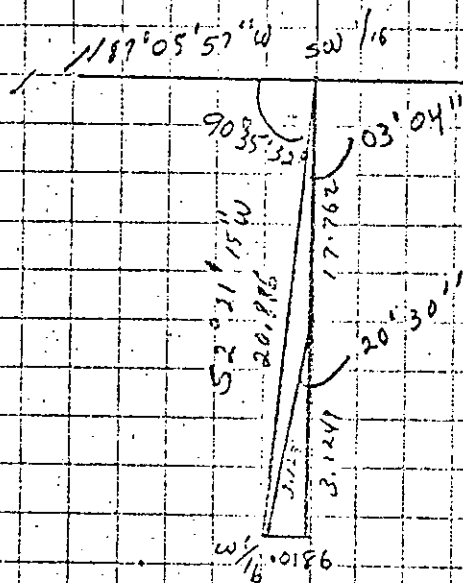
Cont next page

Cont Sec 17-37-9

Random So from SW 1/16

Brgy S 20° 18' 11" W

20.886 closed out 10186 chs East



Relative error of closure 1 lks.  
per 35 chs.

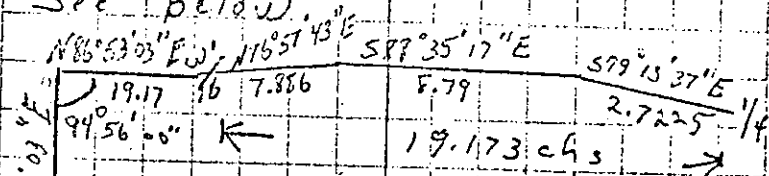
Finished Feb 1962 N.L.

53

Sec. 11- 37- 9 March 1962

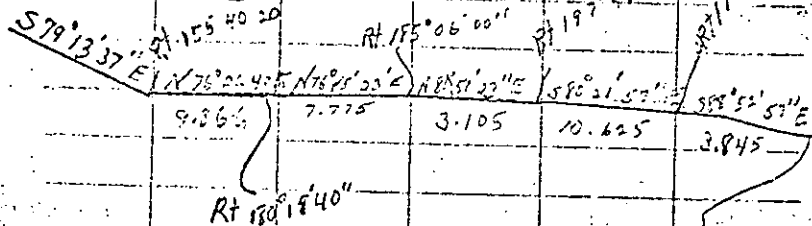
Driver & crew Field work  
 With Transit on Sec Cor  $\frac{10}{11}$  I  
 had established in 1955 read  
 magnetic brng of  $N10^{\circ}49'03''E$   
 on West line Sec 10. to Sec  
 Cor  $\frac{3}{11}$

Then with transit on  $\frac{3}{11}$  turned  
 angle left of  $94^{\circ}56'00''$  thro.  
 the w/16 No line to the N'ly  
 Cor Sec 11. These corners  
 previously established from old  
 evidence - Cor Brng.  $N86^{\circ}53'03''E$   
 The line from the w/16 to the N'ly  
 cor. was traversed on the road.  
 See below.



Sec 11 - 37-9.

With transit on N<sup>1</sup>/<sub>4</sub> turned  
 angle right of 155° 40' 20" & traversed  
 road to Sec Cor. <sup>11/12</sup>  
 Computed Brg & distance  
 N 85° 49' 37" E  
 38.501 ch S.



Then N 88° 10' 33" E a  
 distance of 3.855 chs  
 to the NE Sec Cor.

From NE Cor turned rt 87° 02' 34"  
 Brg S1° 07' 49" W 78.524 chs  
 closed out at 3209 chs west.  
 Corr. distance (78.524)  
 Corr Brg S1° 02' 08" W

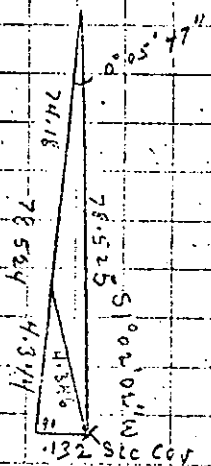
See drawing next page

Cont.

56

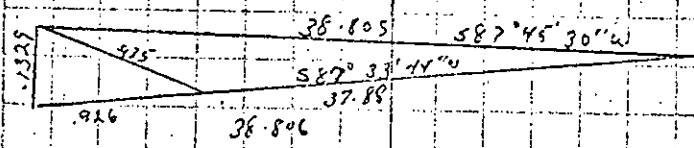
Sec 11 - 37-9

N<sup>1</sup>/<sub>16</sub> 12.33 1/2 S  
 B's 56 N 42° E 31 3/4 chs  
 F's 5420 W 25 1/4 chs  
 1/4 11 1/2 37.222 ch S  
 S 0 = .066 chs East  
 B's F 63 S 53° E 11 1/2 chs  
 R y 7 30° E 25 1/2 chs  
 5 1/6 58.833 chs S  
 B's 514 S 79° W 31 1/2 chs  
 S 615 N 42° E 38 1/2 chs



Transit on SE Cor. turned left  
 angle 91° 49' 35" from def hub.  
 Brg. S 87° 35' 44" W along my old  
 random. 37.88 chs deflected right  
 171° 49' 52" a distance of .935 chs  
 to the S<sup>1</sup>/<sub>4</sub>.

Corr Brg S 87° 45' 30" W  
 " dist 38.805  
 see below



Cont next page

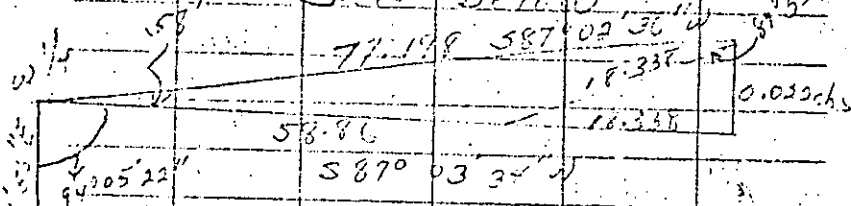
57

Cont. Sec 11 T37N R9E

Transit on NW 1/4 corner turned  
angle left  $94^{\circ} 05' 22''$  from  
west line

57.80 chs deflected  $0^{\circ} 4' 10''$  North  
a distance of 18.227 chs  
to the East 1/4

See below



North  
chaining west from 1/4 N 1/2

- 11.50 chs leave Alder swamp
- 19.309 chs deflection hub
- 26.45 chs enter sb swamp
- 38.583 chs to N-S random
- 56.30 chs leave swamp
- 77.198 chs Total distance
- closed out 0.22 chs North

58

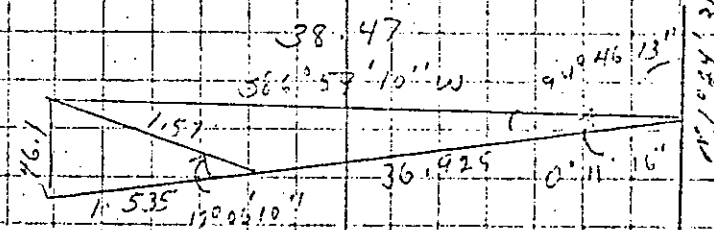
Cont Sec 11 T37N R9E

Transit on a point 17 1/4 chs  
South of C-N 1/16 - Notice  
This point used because the  
C-N 1/16 had been abandoned properly  
Correction made BTs

Maple 6 N 17° E 13 1/2 chs  
Maple 6 S 40° W 27 1/2 chs  
turned a left of  $94^{\circ} 46' 13''$   
at 36.925 chs deflected  
right  $17^{\circ} 06' 10''$  to N 1/16 west  
line

Departure North 46.17 chs  
Total distance 38.47 chs  
Reset NE 1/16 at 19.235 chs  
+ .086 chs North

BTs sb 4 S 70° W 21 1/2 chs  
sb 4 N 66° E 32 1/2 chs

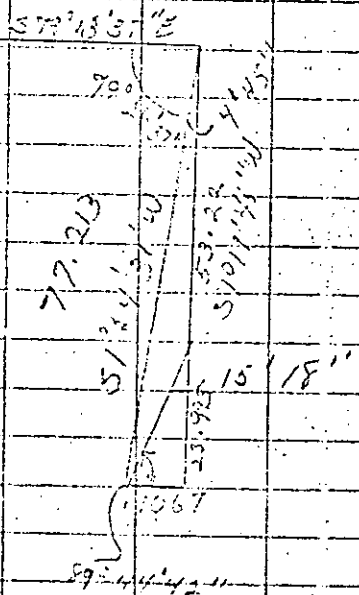


Cont next Page

59

Cont Sec 11-37-9

Transit on N<sup>1</sup>/<sub>4</sub> corner turned  
 angl left  $99^{\circ} 24' 31''$  at  
 53.22 chs to  $150^{\circ} 8'$   
 right to the South <sup>1</sup>/<sub>4</sub> - The  
 corners were set <sup>improperly</sup>  
 or this line - All corrections  
 have been made



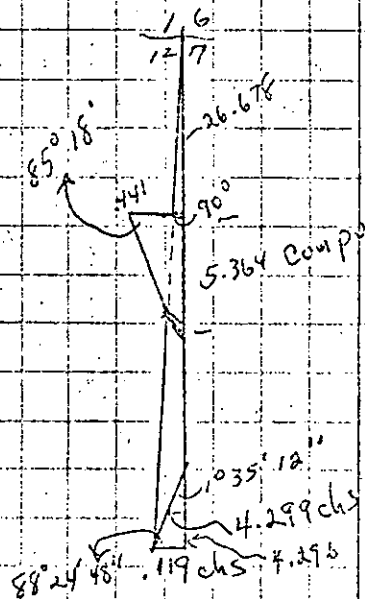
Set on <sup>1</sup>/<sub>16</sub> at 19.2175 chs South  
 Set <sup>1</sup>/<sub>4</sub> at 38.435 chs South  
 BT 564 N  $120^{\circ}$  W 26 <sup>1</sup>/<sub>2</sub> lks  
 Sh 3 S  $41^{\circ}$  E 19 <sup>3</sup>/<sub>4</sub> lks  
 Q. 5 <sup>1</sup>/<sub>16</sub> is in lake

Cont - note skip page

60

Section 12 T37N R9E

Drives & crew June 1962  
 Random South from NE section  
 corner of 12. Bring  $0^{\circ} 06' 00''$  W  
 26.678 turned angle right for  
 a distance of .441 chs for  
 triangulation - see diagram



dist to deft.  
 hub 35.995 chs

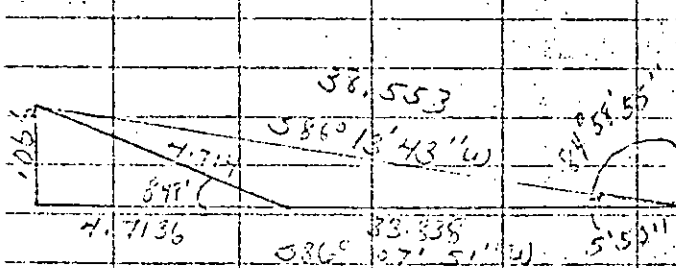
Total distance 40.291 chs  
 Corr Bring  $50^{\circ} 16' 10''$  W  
 Set N <sup>1</sup>/<sub>16</sub> at 20.146 chs & 0.59 chs west  
 BT 564 S  $18^{\circ}$  E 2 lks  
 Maple 3 East 12 lks  
 Line Blazed & pickets set  
 not painted

61



Cont Sec 11 T27N R4E

Transition on N 1/2 East line  
 turned left of  $84^{\circ}35'55''$   
 33.838 chs deflected right  $0^{\circ}48'$   
 to C-N 1/2 -  
 Due to error in setting up N-E 1/2  
 the N-E 1/2 was set  
 wrong - I placed the  
 corner properly later.  
 See below!



NE 1/4 was moved .036 chs. No.  
 1375 Pn 5  $59^{\circ}E$  23 1/2 lks  
 Pw 7  $N40W$  43 lks

The C-W 1/2 must be moved  
 50 lks East.  
 C-E 1/2 set at 19.319 chs  
 1375 Fb 5"  $N14^{\circ}W$  145 chs  
 Fb 7  $S52^{\circ}E$  2085 chs

Cont next page

Cont Sec 11 - 27 - 9

Transition on N-E 1/2 turned  
 left of  $84^{\circ}45'27''$   
 19.32 chs hit C-E 1/2  
 Corr. Brng  $51^{\circ}22'24''N$

Transition on NW 1/2 - random  
 North  
 14.87 chs deflected right  $1^{\circ}39'$   
 to W 1/2 No. line  
 total distance 19.171 chs  
 Corr Brng  $N1^{\circ}36'47''E$

38.56 38.735 19.35.138

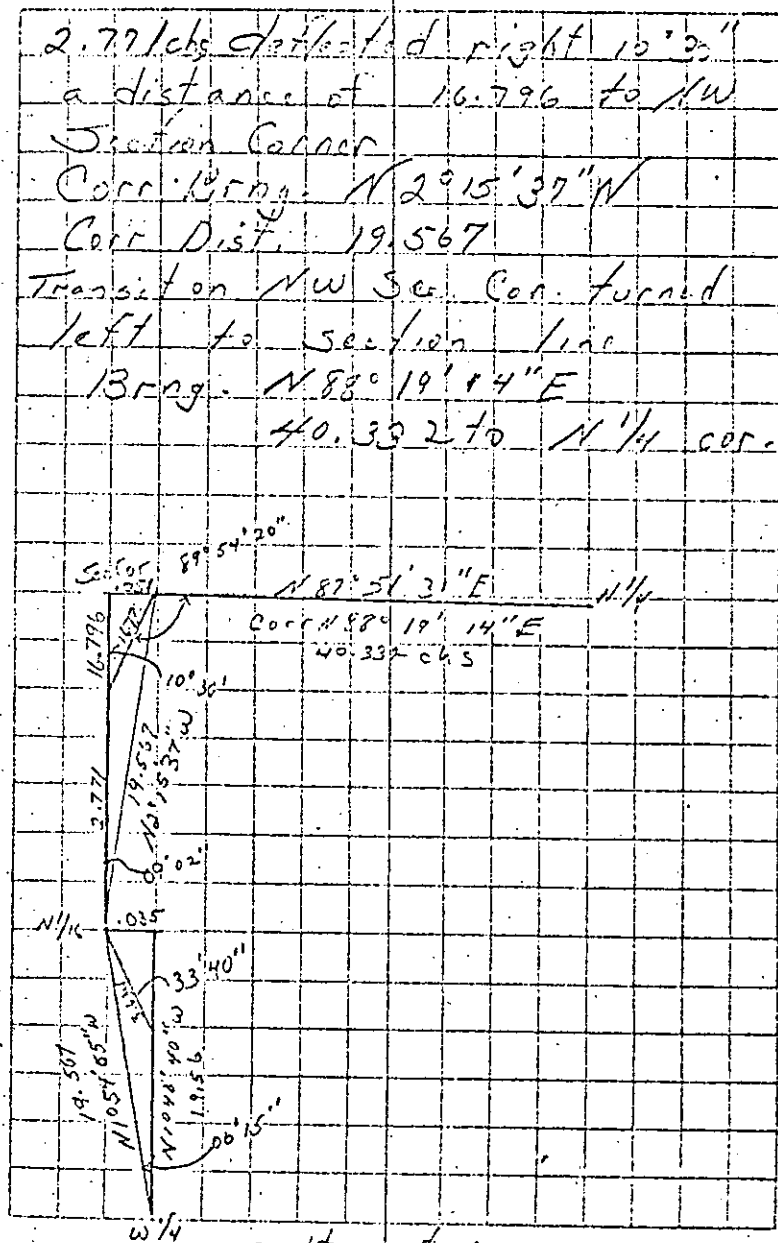
38.735

Finished March 1962

Sec 8, T35N R10E  
 Drives, 7 Cr. W / March 1962  
 Using old corners of  
 Vaughn, Davis & Lawrence  
 some of the following does  
 not tie together properly.  
 Transit on c/4 random North  
 on Brng.  $N0^{\circ}07'18''W$   
 37.9546 chs deflected right  $1^{\circ}01''$   
 to N $1/4$   
 Total distance 38.955  
 Corr Brng.  $N0^{\circ}03'14''W$   
 Dept. 047 chs.  
 19.9273 set c-N  $1/16$  0.235 chs E.  
 1375 Maple S  $N5^{\circ}W$  70.5 lks  
 Fb S  $N81^{\circ}W$  7  $3/4$  lks  
 c/4 DT  
 Sb 3  $S89^{\circ}E$  27 lks.

Transition w/1/4 Brng.  $N1^{\circ}49'21''W$   
 19.567 closed out 0.0356 chs  
 East of N $1/16$   
 Corr Brng.  $N10^{\circ}54'55''W$   
 Transition N $1/16$  turned left  
 from deflection line to the corner  
 at  $180^{\circ}02'19''$

Cont. Sec 8, T35N R10E



cont next page

64 cont next page

65

Sec 8 - 35 N 10 E

Rebacking North line Sec 8  
 From Sec Cor  $\frac{515}{718}$  to N  $\frac{1}{4}$   
 N  $88^{\circ}19'14''$  E 40.332 chs.  
 From N  $\frac{1}{4}$  to Sec. Cor.  $\frac{514}{819}$   
 S  $79^{\circ}31'31''$  E 39.888 chs.  
 From Sec Cor  $\frac{514}{819}$  to E  $\frac{1}{4}$  cor  
 N  $2^{\circ}23'19''$  W 39.83 chs.

Random East from W  $\frac{1}{4}$  Brng  
 N  $89^{\circ}53'08''$  E  
 78.52 chs closed out 1.103 chs So.

(Note: Alignment of old corners on  
 East west  $\frac{1}{4}$  line is off  
 W  $\frac{1}{2}$  N  $89^{\circ}17'20''$  E 38.859 chs.)

Chaining East  
 17.57 chs fr. swamp  
 19.428 chs set c-w  $\frac{1}{16}$ . 202 chs North  
 BTs Maple 8 S  $68^{\circ}$  East 6 lks  
 Maple 5 N  $42^{\circ}$  East 4 lks  
 18.38 fr woods road  
 27.13 chs enter swamp  
 38.859 old C  $\frac{1}{4}$   
 Total line N  $89^{\circ}04'51''$  E

Cont Sec 8 35-10

Random West from c N  $\frac{1}{16}$   
 Brng S  $88^{\circ}45'11''$  W  
 39.543 chs closed out 3  $\frac{1}{4}$  lks.  
 South of N  $\frac{1}{16}$  West line  
 Chaining East  
 16.00 chs enter swamp  
 19.771 chs east set NW  $\frac{1}{16}$   $\frac{1}{2}$  lks No.  
 BTs Spruce 5 N  $5^{\circ}$  E 25 lks  
 Maple 13 S  $1^{\circ}$  W 34 lks  
 32.45 chs fr woods road  
 36.00 chs leave swamp to  
 corner

Random North from c-w  $\frac{1}{16}$   
 on true line N  $10^{\circ}02'03''$  W  
 19.748 chs to NW  $\frac{1}{16}$

lines blazed & painted  
 finished March 1962

Sec 6 T35N R10E  
Drivas & crew March 1962

Random West from  $\frac{1}{4}$   $\frac{6}{7}$

Bearing N  $79^{\circ} 14' 50''$  W

44.766 chs closed out  $13\frac{1}{2}$

1ks. North of Sec Cor  $\frac{116}{1217}$

21.317 Set West  $\frac{1}{16}$   $\frac{6}{7}$  This

is proportioned against Govt. notes

BT. Pw 12 N  $42^{\circ}$  W 91ks. (Lawrence's)

Set Iron pin in road

Ref. pipe set 30 1ks. South

Corr Bearing N  $79^{\circ} 25' 13''$  W

Random North from  $\frac{116}{1217}$  Bearing

N  $1^{\circ} 48' 32''$  W

20.0437 closed out .04 chs west

of  $S\frac{1}{16}$  West line

Iron pin in road (G)

Ref Pipe 70 1ks East

Ref Post 70 1ks West

Old BTs Pw 12 N  $45^{\circ}$  E 89 1ks

He 15 S  $38^{\circ}$  W 85 1ks

Pw 16 N  $44^{\circ}$  E 89 1ks

Corr Bearing N  $1^{\circ} 41' 26''$  W

Continue North on County Trunk

G on corr. Bearing N  $1^{\circ} 41' 26''$  W

from  $S\frac{1}{16}$

68

Cont next page

Sec 6 - 35 - 10

20.0437 Reestablished  $\frac{1}{4}$  cor.

which was removed when the  
road was relocated

Old BTs He 10 N  $60^{\circ}$  E 77.5 1ks

Maple 4 N  $74^{\circ}$  E 66 1ks

He 14 N  $81^{\circ}$  E  $54\frac{3}{4}$  1ks

New BT V. Birch 6 S  $66^{\circ}$  W  $81\frac{1}{2}$  1ks

Iron pin in road

Ref Pipe 110 chains East of corner

Ref Post 110 chain west " "

Continued North on "G" Bearing

N  $7^{\circ} 00' 06''$  W

36.55 chs. closed out 70.2 1ks.

West of  $\frac{3931}{116}$

20.04 chs set N  $\frac{1}{16}$  west

line 35.1 1ks East

BT Y. Birch 17 S  $66^{\circ}$  E 11  $\frac{1}{2}$  1ks

Cedar 9 S  $62^{\circ}$  W 11.7 chs

Corr Bearing N  $5^{\circ} 54' 40''$  W

East from  $\frac{3612}{116}$  on may

old random of several years

ago Bearing S  $86^{\circ} 43' 58''$  E

42.56 closed out 1.592 chs

South of  $\frac{31}{6}$

Corr Bearing S  $86^{\circ} 52' 35''$  E

69

Cont next page

Cont. Sec 6 - 35 - 10

North from S<sup>1</sup>/<sub>4</sub> cor.  $\frac{6}{7}$  (Lawrence's)

Cedar 10" S 59° E 59 1/2 lks.

USG Bench Mark S 81° E 19 lks.

Brng N 40° 22' 19" W

84.15 chs. closed out 2.1 lks E.

Corr Brng N 40° 22' 21" W

Chaining North & setting corners

16.75 chs enter swamp

21.15 chs leave swamp

20.41 chs Set C - S<sup>1</sup>/<sub>16</sub>

BT He 8 N 6° E 24 lks.

He 7 S 61° E 44 lks.

29.49 chs enter swamp

44.82 chs set C<sup>1</sup>/<sub>4</sub>

BTs By 6 S 44° E 7 lks.

Pu 9 S 79° W 3 1/2 lks.

48.18 chs leave swamp

56.25 chs enter swamp

67.23 chs Set C - N<sup>1</sup>/<sub>16</sub>

BTs Ash 6 N 9° W 21 lks.

Cedar 7 N 75° E 12 1/2 lks.

76.77 chs leave swamp to N<sup>1</sup>/<sub>4</sub> Cor.

Cont. Sec 6 - 35 - 10

East from W<sup>1</sup>/<sub>4</sub> Sec 6

on true line S 85° 24' 57" E

83.79 to E<sup>1</sup>/<sub>4</sub>

Chaining East & setting corners

4.00 chs enter swamp

18.00 chs leave swamp

20.8475 chs set C - W<sup>1</sup>/<sub>16</sub>

BTs Cedar 6 S 22° E 10 lks.

He 4 N 6° E 24 lks.

22.00 chs enter swamp

24.00 " leave "

36.00 " enter "

41.895 chs C<sup>1</sup>/<sub>4</sub>

43.00 chs leave swamp

52.00 " enter "

62.9425 chs set C - E<sup>1</sup>/<sub>16</sub>

BTs Ash 9 N 70° E 12 lks.

Ash 6 S 10° W 20 lks.

Note Set ref. post 9 lks S<sup>1</sup>/<sub>16</sub>

Actual location is a stump. Drive

2" Ash into stump

65.00 chs leave swamp

75.00 chs enter swamp to E<sup>1</sup>/<sub>4</sub>

70

Cont. next page

71

Cont. next page

Cont. Sec 6-3-10

North from C-W $\frac{1}{16}$  Brng  
 $N4^{\circ}05'33''W$   
 37.99 chs. closed out 17.11's  
 East of W $\frac{1}{16}$   $\frac{31}{6}$   
 Corr Brng  $N4^{\circ}21'11''W$   
 Chaining North  
 7.00 chs. leave swamp  
 13.50 " @ woods road  
 21.227 " set NW $\frac{1}{16}$  9.6 lks West  
 B.T. Cedar 9  $S46^{\circ}W$  43 $\frac{3}{4}$  lks  
 Cedar 8  $N4^{\circ}W$  37 lks.  
 24.00 chs. @ woods road  
 25.75 chs @ " "  
 36.00 chs enter swamp to  
 W $\frac{1}{16}$  No. line  
 West from NW $\frac{1}{16}$  Brng  
 $N88^{\circ}36'16''W$   
 21.409 closed out 18.6 lks. No.  
 of NW $\frac{1}{16}$  west line  
 Chaining East  
 6.69 chs. to gravel pit entrance  
 7.70 chs. @ woods road  
 8.69 " enter swamp  
 18.35 " leave swamp to NW $\frac{1}{16}$

72

Cont next page

Cont. sec 6-35-10

East from C-S $\frac{1}{16}$  Brng  
 $S88^{\circ}17'55''E$   
 40.57 chs. closed out 2.2 lks  
 North of S $\frac{1}{16}$  East line  
 Corr Brng  $S88^{\circ}16'23''E$   
 Chaining west from S $\frac{1}{16}$  East  
 line  
 1.69 chs. @ Barnes Exclosure  
 2.10 " enter swamp  
 9.15 " leave " "  
 17.50 " enter " "  
 20.285 chs set SE $\frac{1}{16}$   
 B.T. S $\frac{1}{16}$  7  $S89^{\circ}W$  1.075 chs.  
 21.45 chs. leave swamp  
 22.10 " @ woods road  
 23.75 " enter swamp  
 32.75 " leave " "  
 40.57 total

Finished March 1962  
 All Lines Painted & Blazed  
 All Iron corners set.

73

Sec 7 T35N R10E

Drives & crew March 1902

East from C/4 Brng.  $586^{\circ}10'53"E$

40.262 closed out oak chs No. of E/4

20.1081 set C-E 1/16

BTs Ash 5  $55^{\circ}E$  37 1/2 lbs

Ash 5  $114^{\circ}W$  35.8 lbs

C/4 Pin in Road

BTs Ash 4  $N59^{\circ}E$  49 1/2 lbs

Maple 5  $N65^{\circ}E$  61 lbs

North from Se/4 on true Brng.

$N1^{\circ}35'58"E$

H.C. Lawrence cot. nr y BTs

21.2 chs C-S 1/16 pin in road

BTs Maple 9  $S60^{\circ}W$  88 lbs

Post 4"  $N12^{\circ}W$  34 lbs

42.57 C/4

59.90 C-N 1/16 Pin in road

BTs Maple 2  $N55^{\circ}E$  77 lbs

Maple 5 North 1.24 chs

74

Cont next page

Cont sec 7 35-10

Starting from the C-S 1/16 Sec 7 35-10. This corner set in proper manner - H.C. Lawrence was 20.2 lbs too far west. West along "7" we proportioned the distance point the old notes. We have 39.82 chs. to the S 1/16 7/8 and 39.702 chs from this 1/16 to the C-S 1/16 Sec 7

Sec 8

C-S 1/16	39.702	S 1/16	39.82
	$N85^{\circ}43'43"W$		$S85^{\circ}42'14"W$
	39.68		39.80
B.F. Door had			

circumference 1202 chs E

C-S 1/16 Sec 8

BTs Maple 9  $S73^{\circ}E$  1.105 chs

Maple 4  $N40^{\circ}E$  86 lbs

SE 1/16 Sec 7 Pin in Road

BTs Basswood 13  $N48^{\circ}W$  97 1/2 lbs

Elm 11  $N45^{\circ}E$  2.14 chs

75

Cont next page

Cont Sec 7-35-10

3/16 7/8

BTs To 9 N 46° West 73 Ks  
Pin in Road

West from C-N 1/16 Brng.

N 86° 59' 26" E

39.642 closed out 2.5789 chs  
So.

Corr Brng S 89° 16' 46" E

19.779 chs set NE 1/16

BTs Ash 5 N 71° W 9 Ks.

Sb 4 N 50° E 14 Ks

Random South from NE 1/16 to

SE 1/16 Brng S 29° 03' 04" E

Adjusted line to coincide  
with proper alignment on  
the 1/4 line

The C-E 1/16 is 21.5 Ks. East  
making the Brng from

the C-E 1/16 to the NE 1/16

N 0° 30' W and the Brng.

from the C-E 1/16 to the SE 1/16  
N 20° 55' E 20.376 chs.

76

Cont next page

Cont Sec 7-35-10

Note

There is a hunting shack  
on line between the C-E 1/16  
& the SE 1/16.

Finished March 1962

Blazed lines & set iron cor.

77



Sec 23-36-9  
 Lot 102 = crew  
 Nov Dec 1962  
 Random South from Sec Cor  $\frac{413}{23/24}$   
 Brgy.  $S 50^{\circ} 07' E$   
 38.112 chs closed out  $12\frac{1}{2}$  lks  
 Wes. of  $\frac{1}{4}$  corner  
 Corr Brgy.  $S 50^{\circ} 5' 16'' E$   
 Chaining South  
 12.98  $\frac{1}{2}$  U.S. 8  
 17.75 chs. enter swamp  
 18.75 " leave "  
 19.082 " N  $\frac{1}{16}$  E line  
 old post & BTs  
 New BTs Pr 7 N  $5^{\circ} E$   $21\frac{1}{2}$  lks  
 Pr 17 S  $(40^{\circ} W)$  27 lks  
 33.50 chs. enter swamp  
 38.112 Old  $\frac{1}{4}$  cor. To Post BT  
 laying down To 10 S  $34^{\circ} W$  9 lks  
 To 6 S  $9^{\circ} E$  6.5 lks  
 From sec cor  $\frac{413}{23/24}$  East to  
 N  $\frac{1}{4}$  in Highway 8  
 Brgy.  $S 86^{\circ} 25' 10'' W$   
 This  $\frac{1}{4}$  is a Brass Cap in  
 Road at  $\frac{1}{4}$  South of  $\frac{1}{2}$  & 1 FT  
 East of transverse line  
 BT Pine 20 S  $1^{\circ} 00' E$  31.2 ft

78

Cont next page

Cont Sec 23-36-9

From N  $\frac{1}{4}$  corner transverse line  
 to Sec Cor.  $\frac{1514}{22/23}$  Computed  
 Brgy.  $S 86^{\circ} 24' 10'' W$  a distance  
 of 43.91  
 From Sec Cor  $\frac{1514}{22/23}$  turned  
 angle to West line previously  
 run by Don Goddard.  
 Brgy.  $S 50^{\circ} 06' 12'' E$  - 41.255  
 chs to W  $\frac{1}{4}$   
 From W  $\frac{1}{4}$  random East Brgy  
 N  $83^{\circ} 40' 42'' E$   
 83.93 closed out 93 lks  
 North of E  $\frac{1}{4}$   
 Chaining East  
 8.45 chs enter bog  
 13.095 " leave "  
 17.71 " enter "  
 21.569 " set C-W  $\frac{1}{16}$   
 BTs To 3 N  $24^{\circ} E$  1.07 chs  
 Elk Pole S  $2^{\circ} W$  80 lks  
 26.47 chs. leave bog  
 28.805 chs  $\frac{1}{2}$  Road's road  
 33.172 chs offset 0.19 chs So.  
 34.564 " " " " No.

79

cont next page

## Cont Sec 23-36-9

43.158 Set C 1/4 .47 lks South  
 BTS Pw 9 545° W 88 lks  
 Pw 4 556° E 61 1/2 lks

44.37 chs edge of clearing  
 45.66 chs leave " "  
 51.45 chs enter swamp  
 55.17 chs leave " "  
 55.47 chs S woods road  
 61.27 chs enter swamp  
 63.476 " HX4 series 1/8 post  
 1.9 lks N of random. This  
 post, obviously was moved  
 from its original location

63.63 chs leave swamp  
 71.60 " enter " "  
 83.93 E 1/4 corner

Random South from N 1/4 Brng  
 54° 04' 50" E

71.38 closed out 1.42 chs West  
 ch S 1/4

Chaining South

.396 chs offset 1.348 chs East  
 6.173 " offset 1.348 chs West  
 8.77 chs enter swamp  
 10.37 chs leave swamp

80

Cont next page

## Cont Sec 23-36-9

17.22 chs E wet stringer  
 20.93 chs E road  
 22.00 " enter swamp  
 36.45 " leave " "  
 39.67 set C 1/4  
 70.33 E road  
 71.76 chs swamp to corner

From C-W 1/16 random South  
 Brng 54° 50' 15" E

41.60 chs closed out 10 lks  
 East of W 1/16 So. line  
 chaining South

20.80 Set SW 1/16 5 lks West  
 BTS Pw 7 160° E 66 lks  
 Cherry 6 138° W 13 lks

Finished Dec 1962 Lines  
 Blazed Corners Set. This  
 should be added in 1963 survey.

81

Sec 27 T37N R9E  
Lottus & Crew Nov 1962  
Random East from C-S  $\frac{1}{16}$   
as set by P. Bandow Genisot  
Eng. Brgg N  $85^{\circ}$  E  
40.274 closed out 37.8 lks  
South of So  $\frac{1}{16}$  E line  
Chaining East  
6.00 chs swamp  
7.24 " leave swamp  
20.137 chs Set SE  $\frac{1}{16}$  18.9 lks No.  
BTs. M-5 S  $48^{\circ}$  E 26 lks  
M-6 N  $40^{\circ} 30'$  W 52 lks  
29.78 chs enter swamp  
31.57 " leave "

Established 200' lot in  
the NW corner of the SWSE  
parallel to the N-S  $\frac{1}{4}$  line  
and the E-W  $\frac{1}{16}$  line.  
There is a road easement laid  
out approx. 2100 feet westerly  
and 366 feet south of the  
E  $\frac{1}{4}$  Sec 27. This being the  
point of beginning then

Cont Sec 27-37 9

S  $25^{\circ}$  E a distance of  
500 feet more or less to  
the North line of the  
SW SE.

Finished Nov 1962  
Corners Set. This is  
not included in 1962 figures

See map on Onida Book # 2

Notes & Drivas  
Sec 24-36-8  
Nov 1962  
Random East on true  
Brng from N 1/4 cor. Brng.  
N 73° 42' 26" E  
18.00 chs set E 1/16 in road  
~~Brng from N 1/4 cor. Brng.~~  
Pw 20 S 35° E 7.2 lks  
3604 Old Sec Cor.

Random South from E 1/16 No  
line Brng S 0° 00' 26" E  
19.63 closed out 33 lks west  
of NE 1/16

Corrected & Painted line  
Finished Nov 1962

See pages 152-155, Onoda Book  
# 2

NOTE: E 1/16 reference pipe  
taken out by pipe line  
crew; also the 3" maple  
19 69 ft reference pipe  
south of 0.49 dms. from  
pin in the "Long Line"  
road.  
20" Pine white still  
solid.

84

8-9-68  
Drivas & Coleman

Section 14 - 737 N P 9  
Drivas & Crew Nov 1962

Random East from c/14  
Brng N 89° 06' W  
40.15 chs. closed out 36.4 lks  
South

Chaining East  
1.66 chs. & woods road  
20.075 chs set C-E 1/16 18.2 lks No.  
BTS Pw 10 S 10° E 23 lks  
Pw 16 S 74° E 48 lks  
28.00 chs & woods Road  
35.73 chs & P. po. Finelane  
Corr Brng S 89° 39' 10" E

Random North from C-E 1/16 Brng.  
N 8° 09' 34" E  
20.475 chs. closed out 2 lks E  
Chaining North  
6.25 chs enter swamp  
12.18 " leave " "  
Corr Brng N 8° 06' 06" E

Line Painted Finished  
Nov 1962

85

Sec. 36-38-9 Dec. 1962  
Lotus - Drivers & crew

Random South from  $\frac{1}{4}$  35/36  
on line previously run by  
Genisot Eng. Brg. N  $12^{\circ} 40' E$   
44.43 chs. to Sec. Cor.  
 $\frac{35}{36}$  - 38-9  
2' - 27-9

Chaining South  
22.21  $\frac{1}{2}$  set S  $\frac{1}{16}$  corner  
BTS Pr 11 N  $41^{\circ} E$  35 lks.  
Pr 6 S  $55^{\circ} E$  44.2 lks.

31.75 chs. to swamp  
35.28 chs. N. edge Jennie Weber Creek  
39.37 chs. leave creek bottom  
44.43 total

Random North from  $\frac{36}{31}$   
 $\frac{1}{16}$   
39.5725 closed out 26.8 lks  
west of old  $\frac{1}{4}$  cor.

chaining North  
7.00 chs. enter creek bottom  
11.00 E creek 8 lks. wide  
15.85 chs. leave creek bottom  
19.786 Set So.  $\frac{1}{16}$  13.4 lks. E

86

Cont. Sec. 36-38-9

BTS.

39.5725  $\frac{1}{4}$  cor - Brg. N  $0^{\circ} 15' W$   
New BTS Co 8 N  $76^{\circ} E$  28 lks.  
Co 6 N  $35^{\circ} W$  47 lks.

Random West from S  $\frac{1}{16}$  36/31  
Brg.  $270^{\circ} 54'$  mag.  
60.965 chs. offset  $9 \frac{1}{2}$  lks  
South

74.691 chs. closed out 2.374 chs.  
North of  $\frac{1}{16}$  35/36  
Corr. Brg. S  $88^{\circ} 26' 48'' W$   
Corr. Distance 74.728 chs.

Line Cor. & painted  
Finished Dec. 1962

87

Sec 24 T37N R6E

Dec 1962

Loftus - Carson & crew

Random west from NE corner

Bring  $S89^{\circ}20'00''W$

19.475 closed out 1.156 North

of E  $1/16$  No line - old corner

& BTs This corner

does not coincide with what

was presumably Maine's old BT.

Random west from E  $1/16$  No line

Bring  $S84^{\circ}55'50''W$  (This is a 1

degree error)

19.513 closed out 34 lks so of

old  $1/4$  cor. & BTs

Corr Bring  $S85^{\circ}55'44''W$

Random South from W  $1/4$  in

town road.  $180^{\circ}$  magnetic

40.19 closed out 1.59 chs

west of sec cor. location

BTs Pj 12  $N62^{\circ}E$  1.075 chs

Pj 12  $S54^{\circ}W$  1.475 chs

20.995 set S  $1/16$  west line .795 chs E

BTs Pj 12  $S52^{\circ}E$  30  $1/2$

Pj 10  $N10^{\circ}W$  39

88

Cont next page

Cont Sec 24 37-6

Random west from a point

14.3 lks South of the SE cor.

Corr onto true line and

Continued Random Bring  $S86^{\circ}27'15''E$

19.975 set E  $1/16$  pin in road

BTs

39.95 Fence cor &  $1/4$  corner

BTs

59.925 W  $1/16$  & Fence cor in swamp

79.90 Sec Cor  $\frac{23}{24}$

$\frac{20}{25}$

Random west from old C-N  $1/16$

Bring  $S66^{\circ}47'20''$

40.107 chs closed out 5.0 lks So.

20.053 set NW  $1/16$

BTs Maple 5  $S82^{\circ}W$  8  $1/2$  lks

Maple 3  $S44^{\circ}W$  50 lks

Corr Bring  $S86^{\circ}57'40''W$

Random South from NW  $1/16$

Bring  $S2^{\circ}00''E$

19.57 closed out 3 lks East

Corr Bring  $S1^{\circ}54'42''E$

Random South from old C  $1/4$

Bring  $S2^{\circ}19'10''E$  39.905 chs

closed out 12 lks west of S  $1/4$

89

Cont next page

Cont Sec 24-37-6

9.977 set special corner on line  
Bts Aspen 3  $572^{\circ}E$  34  
Birch 5  $52^{\circ}E$  55

19.933 Set C-S  $\frac{1}{16}$   
Bts Aspen 6  $N68^{\circ}E$  52.1Ks  
Aspen 6  $N30^{\circ}E$  53.8Ks

Random North from E  $\frac{1}{16}$  So line  
along Road Brng  $N20^{\circ}45'40''W$

19.9714 set SE  $\frac{1}{16}$  pin in road  
Bts Elec Pole #60  $521^{\circ}E$  129Ks

29.959 Set Special corner pin in road  
set witness corner 40.1Ks west

Random West from Special corner  
betw C-E  $\frac{1}{16}$  & S-E  $\frac{1}{16}$   
Brng  $586^{\circ}25'W$  dist. 19.95ch.

Random West from SE  $\frac{1}{16}$  to C-S  $\frac{1}{16}$   
Brng  $586^{\circ}25'W$  dist 19.95ch.

Reading on E-W  $\frac{1}{4}$  line  $586^{\circ}24'W$   
19.973 chs from C  $\frac{1}{4}$  to CE  $\frac{1}{16}$

cont next page

Cont Sec 24-37-6

Random North from CE  $\frac{1}{16}$   
Brng  $N20^{\circ}53'05''W$   
39.97 closed out 51.6 Ks west  
of E  $\frac{1}{16}$  No line.  
19.885 Set NE  $\frac{1}{16}$  pin in road  
Corr Brng  $N30^{\circ}08'40''W$   
C-E  $\frac{1}{16}$  pin in road  
Bts Aspen 10  $N62^{\circ}W$  106.1Ks  
Power Pole #64  $515^{\circ}E$  102.5Ks

All lines corrected &  
painted Finished Dec 1952

Sec 35 T36 N R10 E

Carson & crew Dec 27-1962

Random North from W 1/16

South line Brg N 40° W

58.40 chs closed out 3.39 chs East  
of C-W 1/16

Corr length 58.50

Corr Brg. N 70° 19' 21" W

29.25 chs set SW 1/16 1.695 chs. W.

BTs Cedar 12 N 48° W 58.5 lks.

" 10 S 31° E 53.4 lks

Random East from SW 1/16

Brg N 89° 58' E

21.06 chs. closed out 2.5 lks

North of C-S 1/16

Cor Brg. S 89° 58' E

lines corrected & Blazed

Finished Dec 31-1962

Section 3-T38 N R10 E

Carson & crew Dec. 26-1962

Random West from C-N 1/16

Brg. S 89° 53' W

20.00 chs closed out 30 lks

North of Special NW 1/16

BTs Ta 3 S 80° E 51.5 lks

Ta 5 S 66° W 39.5 lks

Corr a pointed line

Finished Dec 1962

{ See Oneida Book # 2 for other  
information concerning this section.  
pages 114 & 119 }



Sec 12 - 37 - 9 Jan 1963  
Lottos - Bernstein - Berg - Ripel

Random West from E  $\frac{1}{4}$  cor.  
Brng  $587^{\circ} 30' W$   
76.80 chs closed out  
.39 chs So. of W  $\frac{1}{4}$   
Corr Brng.  $587^{\circ} 47' 35'' W$   
38.40 chs Set Temp C  $\frac{1}{4}$   
on true line  
57.60 chs Set Temp C-W  $\frac{1}{16}$

Finished Jan 31 - 1963

Feb 1963

Sec 8 T37N R10E  
Carson & crew

Random North from E  $\frac{1}{4}$  bearing  
N  $1^{\circ} 42' W$   
20.27 chs set N  $\frac{1}{16}$  2 lks East  
BTs Maple 6 S  $47^{\circ} E$  50 lks.  
" 10 N  $41^{\circ} E$  86 "  
40.54 closed out 4 links West  
of NE Sec cor.  
Corr Brng N  $1^{\circ} 38' 30'' W$

Random West from E  $\frac{1}{4}$  Brng  
N  $89^{\circ} 40' W$   
16.382 chs set C-E  $\frac{1}{16}$   
BTs Pw 13 S  $77^{\circ} W$  38  $\frac{1}{4}$  lks.  
Maple 9 S  $80^{\circ} W$  83 "  
32.764 - C  $\frac{1}{4}$  on line

March 1963

Sec 28 T36N R10E

Drivins crew Wild TO

Random East from  $\frac{28}{33}$  set by (Lawrence)

Brgy  $N88^{\circ}39'53''E$

20.581 closed out 68 1ks so of

w/16  $\frac{28}{33}$  - set by Lawrence

BTs Ta 3  $N11^{\circ}E$  27 1ks

Pn 12  $S48^{\circ}E$  69 1ks

chaining west from w/16

8.80 chs leave tamarack swamp

highland Balsam to sec cor

chaining east from w/16 to  $\frac{1}{4}$   $\frac{28}{33}$

0.70 chs leave swamp

10.87 " south bank of bend in Pelican R.

15.95 " west " " Pelican R.

16.70 " east " " " "

19.50 " leave Pelican R. bottom

20.59 chs closed out .087 chs No.

Corr Brgy  $N86^{\circ}16'17''E$

Random North from w/16  $\frac{28}{33}$

Brgy  $N0^{\circ}28'21''W$

21.017 closed out .224 chs west

of SW'16 set by Lawrence

BTs Pn 17  $N12^{\circ}E$  33 3/4 1ks

Pn 11  $S58^{\circ}E$  44 1ks

97 Corr Brgy  $N0^{\circ}08'18''E$

cont next page

Cont Sec 28 - 26-10

Random West from SW 1/4 Sec 28

Brng  $587^{\circ}15'07''W$

20.825 closed out 2 lks North  
of S 1/16 29/28 set by Lawrence

Corr Brng  $587^{\circ}11'47''W$

Random South from S 1/16 29/28

Brng  $50^{\circ}22'00''E$

Bts Ta 4  $S63^{\circ}W$  34 lks

Ta 5  $N67^{\circ}E$  69 lks

21.18 chs closed out .039 chs west  
of 29/28  
32/33

Bts Sb 4  $N66^{\circ}W$  42 1/2 lks

Sb 5  $S55^{\circ}W$  61 lks

Corr Brng  $50^{\circ}28'21''E$

Jan 63  
Sec 29 T36N R10E

Drives & crew

W/D TO

Random West from 29/28  
32/33

Brng  $588^{\circ}12'58''W$

41.475 chs closed out .275 chs

North of 1/4 corner (by Lawrence)

Bts old st.  $S10^{\circ}W$  5 lks

Pr.  $N43^{\circ}E$  20 1/2 lks

Maple 15  $S48^{\circ}W$  58 lks

Chaining West

7.90 chs & Mangrove Road

14.50 " enter swamp

20.735 set E 1/16 29/33 18 3/4 lks South

Bts Sb 5  $N48^{\circ}E$  42 1/2 lks

Sb 5  $S63^{\circ}W$  38 lks

21.70 chs & woods road

27.90 " leave swamp

31.40 " & woods road

34.00 " & " "

36.00 " enter swamp

41.475 1/4 cor

Cont Sec 29 36-10

Random North from S $\frac{1}{4}$  Brng  
 N $0^{\circ}$   
 41.699 closed out .347 chs east  
 of C $\frac{1}{4}$  set by Lawrence  
 Corr Brng N $0^{\circ}28'37''$  W  
 Chaining South  
 3.75 chs leave swamp  
 16.75 " enter alder swp.  
 20.8485 " set C-S $\frac{1}{16}$  .173 chs West  
 BTs Elm 10" N $48^{\circ}$  W 1 ch  
 Elm 4" S $76^{\circ}$  W 32 lks  
 22.20 " Pelican River  
 29.10 " leave swamp  
 34.00 enter swamp  
 C $\frac{1}{4}$  BTs  
 565 S $70^{\circ}$  E 52 lks  
 566 N $62^{\circ}$  E 27 lks  
 566 S $24^{\circ}$  W 24 $\frac{1}{2}$  lks  
 Random East from C-S $\frac{1}{16}$   
 Brng N $88^{\circ}10'31''$  E  
 41.515 chs closed out 16 lks  
 North of S $\frac{1}{16}$  29/28  
 Corr Brng N $98^{\circ}23'46''$  E  
 Chaining East

100

Cont next page

Cont Sec 29-36-10

15.85 chs to Pelican River  
 20.40 " leave " "  
 26.10 " to " "  
 28.00 " leave " "  
 31.45 " leave swamp  
 34.00 enter " "  
 37.25 leave " "  
 41.515  $\frac{1}{16}$  corner

Chaining South from  $\frac{1}{16}$  29/28  
 as previously run

14.00 chs leave bog  
 16.90 E woods road  
 18.70 hedge clearing

All iron pipes set lines  
 painted Jan 1963

101

(Section 5, Twp. 57N, Rng. 8E)

Drives & Cues Transit 3-64

Running from the  $\frac{1}{8}$   $\frac{1}{8}$  set by other parties, p. 08 & squared post, N 87.40° 00' E a distance of 17.65 chains to deflection hub thence, N 72° 15' 12" E, 1.286 chains, to a point established by crosshatching two scribed bearing trees denoting the E  $\frac{1}{2}$   $\frac{1}{8}$  (Probed but hit water so set hub @ this point - computed my line, running N 86° 43' 01" E due to tree on line still falling 0.118 chains South of the corner common to  $\frac{1}{8}$   $\frac{1}{8}$  iron pipe & sq. post

corrected Bng:

N 86° 33' 57" E

corrected Distance:

41.634 chains

Did not set the E  $\frac{1}{2}$   $\frac{1}{8}$  though there would be 0.0839 chs. difference in our location & theirs.

① @ 10.00 chs. East "Wisconsin River"

② @ 18.00 " " " "

Total Distance: 41.634 chs.

Running from the  $\frac{1}{8}$   $\frac{1}{8}$  N 25° 00' 00" E a distance of 80.03 chs. to deflection hub, deflection distance to  $\frac{1}{2}$   $\frac{1}{8}$  E town road, 1.71 chs. this  $\frac{1}{2}$  set by us according to notes given us by "Grisot Engineering Co. Drive, Railroad sales. - no B.T. available

corrected Bng:

N 02° 39' 18" E

corrected Distance:

81.592 chains

Running from the E  $\frac{1}{2}$   $\frac{1}{8}$  iron pipe, S 89° 16' 18" W, 74.74 chs. to deflection hub, thence S 60° 13' 19" W, 3.19 chs. to  $\frac{1}{4}$   $\frac{1}{8}$  a corner set by "Grisot."

corr. Bng: S 86° 12' 13" W

corr. Dist: 77.576 chs

10 to m, S - 60° E, 0.76 chains

Section 5, Twp. 57N, Rng. 8E  
cont

Notes for the N 84 line:

- ① @ 14.75 chs. "Beaver Dam"
  - ② @ 18.00 " Center Creek
  - ③ @ 24.88 " center "Wisconsin River"
  - ④ @ 36.60 " high - land
  - ⑤ @ 68.20 " canal - ditch
- total Distance: 81.589 chs.  
Departure East: 0.7086 chs.

Bng trees by other parties for the

$\frac{1}{4}$   $\frac{1}{8}$  10 to m, N - 80° E, 0.055 chs.  
6 to m, S - 21° E, 0.235 chs.  
9 pipe

Set the C 4 @ the intersection of the two trees & lines.

N  $\frac{1}{2}$  - 40.316 chains  
S  $\frac{1}{2}$  - 39.246 "  
E  $\frac{1}{2}$  - 40.838 "  
W  $\frac{1}{2}$  - 36.708 "

Bng trees:

8" Pine dock, N 80° W, 0.27 chs.  
9' " " N 08° W, 0.096 "

Painted & corrected

{set ① ch pipe}

Section 9, Twp. 36 N., R. 9 E.

Driver & crew Transit 1-26-64

Running from the S 1/4 of 19 (36-9) on iron pipe below the surface of the road, a random traverse line along the town road & into the section corner common to 19, 25 & 30, set by "Genisot"

computed bearing & running from the S 1/4 of 19,  $S 02^{\circ} 12' 40" E$

① @ 12.749 chs. offset 0.162 chs. East  
 ② @ 17.937 " " " 0.162 " West

Total Distance: 30.015 chs.  
 Departure West: 0.008 chs.  
 corrected Bng:  $S 02^{\circ} 14' 01" E$

Line Blamed & painted  
 6-11-64

S. 4, Twp. 38 N., R. 10 E.

Driver & crew Transit 1-26-65

Running from (32.33) }  $S 89^{\circ} 34' 00" E$ , to # 32

- ① @ 2.50 chs. enter swamp.
- ② @ 8.00 chs. leave swamp.
- ③ @ 9.57 chs. offset north 0.09 chs.
- ④ @ 15.57 chs. enter swamp.
- ⑤ @ 20.37 chs. leave swamp.
- ⑥ @ 28.89 chs. deflection 130 b.
- ⑦ length of deflection leg: 1.35 chs. to corner.

total Distance: 59.755 chs.  
 Departure North: 0.448 chs. offset included.  
 corrected Bng:  $S 89^{\circ} 03' 34" E$   
 Dist: 39.79 chs.  
 Line blamed & painted.

Running from the # 32,  $S 89^{\circ} 03' 34" E$ ,

Did not find this line  
 with previous survey  
 but may be a random  
 line set - possibly 10  
 chs. into corner - distant

{ Sect 5 Twp. 38 N., R. 10 E. }

Running from (32.33) }  $N 87^{\circ} 55' 50" W$ , to the E 1/4 # 5

- ① @ 6.00 chs. enter corner swamp.
- ② @ 8.00 chs. leave "
- ③ @ 10.54 chs. enter older corner swamp

total Distance: 24.54 chs.  
 Departure North: 0.10 chs.

Bng. 1856 for the E 1/4 # 5 previously recorded - line may set prior 1871 this survey. (Line blamed & painted)

See pages 140-142 Orinda Cook # 3 for other information concerning this section.

Section 32, Twp. 39 N., Rng. 10 E.

Orvas & crew Transit Nov 15 '65

Running from the E 1/4 30, N 02° 13' 45" E, to the S E 1/4, iron pipe set by prior survey

- ① @ 10.00 chains to E corner swamp.
- ② @ 12.93 chains offset 0.55 chains East
- ③ @ 14.93 chains to woods road

Total Distance: 20.107 chains  
 Departure West: 0.4234 of feet included

Corrected Brg: N 01° 01' 26" W  
 " Distance: 20.107 chains

Line Blazed & Painted

Note: This line run previously with a hand compass - the error was at least 1/2 in. the correct one.

Section 35, Twp. 37 N., Rng. 9 E.

Orvas & crew Transit 2 - '65

Running from the 1/4 34, S 89° 05' 45" W to the section corner common to 26 25, on iron pipe, & old post (wire set by E. Lee, mostly by hand)

- coiler { ① @ 8.00 chs. to "Shepard Lake Creek"
- swamp { ② @ 9.56 chs. to "Shepard Lake Creek"
- ③ @ 11.36 chs. to "Shepard Lake Creek"

Total Distance: 4.0634 chains  
 Departure South: 0.7109 chains

Corrected Brg: N 89° 54' 45" W  
 " Distance: 4.07 chains

Line pointed & blazed

Running from the section corner common to 26 25, a traverse, random line to the 1/4 26 25

- ① @ 8.00 chs. highland.
- ② @ 12.00 chs. swamp.
- ③ @ 15.00 chs. to "So Line" railroad.
- ④ @ 20.00 chs. to "Shepard Lake" creek.
- ⑤ @ 27.00 chains highland.

⑥ @ 30.636 chains angle point # north side of "Shepard Lake" road, line N 53° 58' 10" E, 4.097 chs. to line S 11° 00' 00" E, 30.800 chs. to S 27° 07' 25" W, 6.30 chs. to the 1/4 26 25.

Corrected Brg: S 22° 31' 34" E  
 " Distance: 42.099 chains

Set the N 1/4 @ 21.0495 chains on true line (iron pipe)

Brg trees:

- 3" Spruce Block  
 N-48° E, 0.25 chains
- & 4" Spruce Block  
 S 27° W, 0.40 chains

Running from the 1/4 24, shooting a 1" pipe set by Geneset Engineering Co. on line, S 8° 57' 35" E, a distance of 912.5 feet

Section 25, Twp. 37 N., Rng. 9 E.  
cont

to the <sup>old</sup> county trunk "C". Placed a bolt in the road @ this point.

Set a reference pipe 7.14 chains N 87° 35' W on line from the above point. (line blazed & pointed.)

Running from the N  $\frac{1}{2}$  Sec 5 S 89° 53' 25" E (computed brng) a distance of 57.26 chains to a point in the  $\frac{1}{2}$  of old county trunk "C".  
1. Drove a railroad spike @ this location & set a reference pipe 1.097 chains, N 89° 53' 25" on line from the railroad spike.  
2. (as per deed) Line blazed & pointed.

(Set 3  $\frac{1}{2}$ " pipes)

Section 1, Twp. 37 N., Rng. 10 E.

Orilas Hand Compass 9-27-63  
Koppel & again 10-1-63

Running from the  $\frac{1}{4}$   $\frac{36}{7}$ , S 88° E, a distance of 39.70 chains to the section corner common to  $\frac{1}{4}$  &  $\frac{1}{2}$  iron pipe & cap by other parties.

Corrected Brng: S 87° E  
" Dist: 39.70 chs.

Set a temporary E  $\frac{1}{2}$ " (2" pipe white) @ 19.95 chains on line. (stake)

Found no evidence of a corner although 3 to 4 trees blazed about 6' north of my line. Did not blaze cut line but tied blue ribbon along the corrected line for the  $\frac{1}{2}$  mile. (pacing) Orilas along.

Running S 83° W, 4 tallies, fell 105' west of state post & Lawrence's post

corrected Brng: S 81° E

old Brng trees for N.E.  $\frac{1}{4}$ " (old Birch, cedar & toby) Lawrence's  
corrected line with blue ribbon.

Found a 4" x 4" cedar post @ the CE  $\frac{1}{2}$ " probably set by the state (no evidence of B.T.)

Ran west from the CE  $\frac{1}{2}$ " (N 88° W) 4 tallies. Found 6" x 6" squared post down & old point below swamp level ~ post 100' corner scribbled on it (no evidence of Brng. trees)

Running S 81° E  $\frac{36}{7}$  to the C $\frac{1}{4}$ . Fell 13' west of the C $\frac{1}{4}$  ~ set a temp. 2" x 2" black oak squared post 3 tallies, 5' across south of the  $\frac{1}{4}$  & 66' east of my original line.

corr Brng: S 83° 15' E  
Corrected line with blue ribbon from the temp. CN  $\frac{1}{2}$ " line to the N  $\frac{1}{4}$ .

Running west from the NE  $\frac{1}{2}$ , N 88° W, fell 36' north of the temp. CN  $\frac{1}{2}$  corrected line with blue ribbon.

Set on iron pipes @ the  $\frac{1}{4}$   $\frac{36}{7}$

B.T. ~ (old) 28" m.s., N 69° W, 0.17 chs.

& (new) 4" m.s., N 33° E, 0.21 chs.

(over)



SECT 1, TWP 37N., R19. 10E  
CONT

NOTE: it appears that the hunting  
stock in the N.E. NE belonging to  
Kurtz is on company owned land.  
It stands approx. imately two to three  
chains west of the temp. E 1/4<sup>th</sup> &  
the same distance south of the North  
line.

(set ① 4 pipe)

1-26-66

SECTION 20, TWP. 38N., R19. 10E

Running from the N 1/4<sup>th</sup> on iron pipe,  
set by Kipco prior survey 1920 to the  
N 1/4<sup>th</sup> on iron pipe set by Kipco prior sur-  
vey N 21° 00' 00" E magnetic.

Chaining East:

@ 11.40 chains leave stake 9.

Turn back swamp.

@ 17.66 chains deflection hub.

Departure North: 0.891 chains.

Corrected Bearing: N 83° 31' 00" E

Distance: 20.253 chains

Line blotted & painted this date

NOTE: See Onida County book  
# 1, pages 71 - 75 for  
balance of work.

110

Section 34, Twp. 38N., R19. 10E.

Drives & crew Transit 10-2-64

From the C.S. 16<sup>th</sup> N of 57° 00' W to the  
N 1/4<sup>th</sup> on iron pipe set by Kipco

① Highland hardwood

total Distance: 18.796 chs.

Departure West: 0.531 chains.

Corrected Bearing: N 0° 31' 21" E.

Dist.: 18.803 chains.

Line blotted & painted blue & oil  
other lines in 3-34 corrected &  
painted this date.

NOTE: For other notes concerning  
this section refer to Onida  
book # 2, pages 74-77 & pg. 134  
& pg. 1, Onida Book # 3.

1-11-66

SECTION 7, TWP. 38N., R19. 10E

Running from the C 4 set by "clouds" South 0  
to the # 78, set by "Kipco" in 1910 prior survey.

random Line Bearing: S South

Departure West: 0.923 chains

@ 8.00 chains leave swamp & enter field

@ 10.00 chains leave field.

@ 15.10 " enter field.

@ 18.40 " leave

@ 23.91 " deflection hub.

Deflection by length: 1.873 chains

Corrected Bearing:

Distance: S 01° 19' 20" E  
39.936 chains.

Running from the C 4, N 01° 19' 00" W for a  
distance of 39.936 chains & set the # 6  
this distance proportioned against "clouds"  
record distance. (iron pipe - did not reference  
any of the Norway Pine @ this time)

Chaining North

@ 1.50 chains E South Gate road.

@ 7.00 " enter swamp.

(over)

111

Sect. 7, Twp. 38 N., Rng. 10 E  
Cont'd.

- @ 18.50 chains 180° S. Swamp.
- @ 20.10 " Ripco woods road.
- @ 27.10 " Enter Swamp.
- @ 33.70 " 180° S. Swamp.
- @ 36.10 " E "Ripco" woods road.
- @ 39.95 " set the  $\frac{1}{4}$  corner proportioned against Vaughn's record distance. (1908)

Running from the  $\frac{1}{4}$  by  $S 87^{\circ} 13' 29'' W$  for a distance of 39.95 to the section corner a concrete monument with brass cap set by G.L.O. common to 1817  
 Departure South: 0.018 chains  
 corrected Brg:  $S 87^{\circ} 15' 03'' W$   
 Distance: 39.95 chains.

(NOTE: Found an old bmg. stamp with iron marks which corresponds with Vaughn's record distance, but tied into the G.L.O. corner.

CHAINING EAST

- 1.5 ch. monument to deflect on hub
- @ 6.59 chains E "Tower Ranch" road.
- @ 7.12 " Enter corner. Swamp.
- @ 13.10 " 180° S.
- @ 22.75 " marsh hole.
- @ 24.95 " 180° S. marsh hole.
- @ 31.57 " E "Ripco" woods road.
- @ 33.45 "  $\frac{1}{4}$  corner pipe.

set the  $\frac{1}{4}$  by @ 19.54 chains west of the  $\frac{1}{4}$  & 0.06 ch. north of the random. This proportioned against Vaughn's recorded distance from 1908. 184 to 0.72 : 50.043 chains  
 39.913 19.342

Running from the  $\frac{1}{4}$  m.c. on North side of Sugar Camp lake to the G.L.O. monument denoting the section corner common to N 0° 105' E, for a distance of 10.58 chs. - Dep. East: 0.201  
 corrected Brg: N 0° 57' 33" W  
 Dist: 10.58 chains  
 set at @ intersection of the above & below lines this falls in lake.

Running from the  $\frac{1}{4}$  by other parties  $S 87^{\circ} 28' 09'' W$  30.698 chains hit an iron pipe on the East side of lake - (Vaughn's record notes call for a m.c. @ 30.70 chains; also an old wire remains on old fence.  
 corr Brg:  $S 87^{\circ} 28' 09'' W$   
 : 40.073 chains

Sect. 7, Twp. 38 N., Rng. 10 E

Distance & bearing from the  $\frac{1}{4}$  (in lake) to the G.L.O. monument on the North shore of the lake:

Brg: N 0° 54' 33" W  
 Dist: 39.213 chains  
 total Distance from the  $\frac{1}{4}$  to the G.L.O. monument @ the N.W. section corner:  
 Brg: N 0° 54' 33" W  
 Dist: 39.793 chains  
 (portion this into N.W. section corner's distance: 0)

Set a hub @ 19.877 chains on the ice for the N  $\frac{1}{4}$

set the  $\frac{1}{4}$  on iron pipe, by proportioning against Vaughn's notes:

Vaughn's	20.13	30.70
	20.129	30.598

@ 20.129 chains West of the  $\frac{1}{4}$  on line, no Brg. trace.

(NOTE:) Brg. & distance from the  $\frac{1}{4}$  in the lake to a G.L.O. meander corner monument on the South side of the lake:

Brg:  $S 62^{\circ} 10' 04'' W$   
 Dist: 12.827 chains

total distance from the  $\frac{1}{4}$  to the S.W. section corner falling in county highway:

37.81 chains  
 bearing as above

Running from the  $\frac{1}{4}$  by  $S 0^{\circ} 54' 33'' E$  for a distance of 17.77 chs. thence  $S 0^{\circ} 16' 23'' E$  for a distance of 22.67 chs., thence to the  $\frac{1}{4}$  corner:

corrected Brg:  $S 0^{\circ} 49' 53'' E$   
 Distance: 39.875 chs.

Set the N.W.  $\frac{1}{4}$  @ 19.938 chs. South of the  $\frac{1}{4}$  on line.

NOTE: Found the North-South fence line to be fairly straight for several chains although our line was East - as we continued west found the old fence on the side of the other of our line - quite error.

Running from the N.W.  $\frac{1}{4}$  on iron pipe to the N  $\frac{1}{4}$  hub on Sugar Camp lake,  $S 87^{\circ} 18' 40'' W$

(over)

Section 7 Twp. 38 N, Rg. 10 E  
cont'd

for a distance of 20.014 chains.

Departure South: 0.005 chains  
corrected Brng: S 87° 19' 50"  
20.014 chains

Set a special meander corner pipe on line, 3.48 chains west of the N 1/4, shore of Sugar Comptake. the N 1/4, 16.524 chains west of pipe falling in lot 4. (Lines painted & blazed)

Set 1 1/4 pipe  
Set 4 1/16 pipes

SECTION 5, TWP. 38 N, Rg. 10 E

Running a traverse random line from the section corner pipe, common to E 1/2 along camp two first line, to the section corner pipe common to S 1/4

corrected Brng: S 84° 00' 06" E  
corrected Distance: 31.024 chains  
Set the 1/4 @ 10.521 chains, on the corrected line.

Brng. trees:  
16" Tamarack  
N 68° E, 0.055 chains  
& 6" Spruce, 1/2 block,  
N - 53° West,  
0.21 chains

Running from the 1/4 E, a traverse random line, to the N 1/4 on iron pipe

corrected Brng: N 02° 00' 45" W  
corrected Distance: 75.387 chains

Run on the line from the N 1/4 on the corrected Brng. S 02° 00' 45" E, for a total distance of 36.387 chains

Set a picket @ 34.387 chs.  
" " " " 35.387 chs.  
" " " " 36.387 chs.

Blazed & pointed line  
Section not completed.

(SEE PAGE 122)

Section 13, Twp. 37 N, Rg. 3 E

2-7-65

Running from the 1/4 corner 12/18 a point in the town road, established by prior survey, a traverse random line, to the N 1/4 pipe, 12/18, by prior survey

Corrected Brng:  
N 0° 05' 06" E  
corrected Distance: 20.054 chs.  
New C 1/4 farther E 1/4 (bolt in road)  
6" Spruce, 1/2 block, S - 77° 00' 00" W, 0.10 chs.  
& 7" Oak, S - 31° E, 0.505 chains.

Running a traverse random line from the E 1/4 to the W 1/4 on iron bolt in the intersections of the town roads.

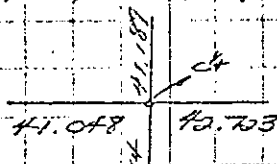
corrected Brng: S 59° 03' 13" W  
corrected Dist: 83.773 chains.  
Set a 2" reference pipe 0.50 chains North of the W 1/4 corner bolt

Running from a point on the E 1/4 line, traverse a traverse random Northerly to the 1/4 B, thence from the same point on 1/4 B the E 1/4 traverse southerly to the 1/4 S, on iron pin, by other parties.

corrected Brng: S 01° 15' 00" W  
Dist: 81.773 chains  
the bolt located with dip needle @ the 1/4 location -  
near Brng. trees:

8" Birch white, S - 85° W, 0.07 chs.  
& 11" Spruce, S - 61° E, 0.12 chs.  
{NOTE} Also located an old well point east of this location with pub. tick in it - this is water the lower line but does not check out.

Set the C 1/4 pipe @ the intersection of the two corrected 1/4 lines:



(over)

Section 13 Twp. 37N., Rng. 8E

contd.

Set the  $CE \frac{1}{2}$  @ 31.3615 chains west of the  $E \frac{1}{4}$  on line.

Bring trees:

- 15 Pine white,
- N-41 West,
- 0.12 chains.
- & 11 Pine white,
- S-08 East,
- 0.375 chains.

Set the  $CN \frac{1}{2}$  pipe, driven flush in field @ 20.5943 chains North of the  $CE \frac{1}{2}$  on line. no bearing trees.

Running from the  $CN \frac{1}{2}$  S  $89^{\circ}45'19''$  E to the  $N \frac{1}{2}$  13/18, for a total distance of 42.423 chains.

Departure South: 0.086 chs.

Corrected Brg: S  $89^{\circ}52'29''$  E

: 42.423 chains.

Set the  $N.E. \frac{1}{4}$  @ 21.2315 chains East of the  $CN \frac{1}{2}$  on corrected line.

Bring trees:

- 6 m.r., N-45 West, 0.35 chains.
- & 8 m.r., S-48 West, 0.29 chains.

Lines pointed & blazed pertaining to "Lipco" survey.

SECTION 8, TWP. 37N., RNG. 10E

Running from the  $CE \frac{1}{2}$  pipe set by prior survey N  $63^{\circ}56'30''$  West magnetic, for a distance of 40.87 chains to the  $E \frac{1}{2}$  on iron pipe by prior survey.

Departure East: 0.135 chains.

Corrected Brg: N  $64^{\circ}07'00''$  W

Distance: 40.87 chains

training North: @ 6.40 chains corner swamp.

@ 18.00 chains leave swamp.

@ 25.30 chains @ swamp.

@ 28.07 chains & creek.

116

(Line blazed & pointed)

PART OF SECTION 9 TWP. 37N., Rng. 9 E. (Lots 12, 13, 14 & 15)

(cont'd)

Running from the section corner on iron pipe, by other parties common to  $CE \frac{1}{2}$  a traverse random line to the  $E \frac{1}{2}$  on iron pipe by other parties (no evidence of the  $E \frac{1}{2}$  pipe.)

Corrected Brg:

N  $89^{\circ}16'37''$  W

Corrected Distance:

41.671 chains or 2750.29 feet.

Set the  $E \frac{1}{2}$  pipe @ 20.555 chains west of the section corner on line.

(no bearing trees)

NOTE: Also set a 1" pipe on line, 15' west of the  $E \frac{1}{2}$  pipe denoting the N.E. corner of lot 3 township of "Pelican". Also set a 1" pipe 254' west of the  $E \frac{1}{2}$  on line, denoting the N.W. corner of lot #3, Township of "Pelican".

Setting over the  $E \frac{1}{2}$  corner pipe, back-sighting the section line, turned to pipe set along the  $N \frac{1}{2}$  line, S-24, by Geniet Engineering Co, Brg: S  $02^{\circ}23'00''$  W

From the  $E \frac{1}{2}$  corner on along the section line, S  $89^{\circ}16'38''$  E, to a point 30 feet thence, from the  $E \frac{1}{2}$  corner N  $89^{\circ}16'55''$  W 100 feet thence, from this point, N  $89^{\circ}16'23''$  W 30 feet from the  $E \frac{1}{2}$  corner N  $89^{\circ}23'27''$  E for a distance of 32 feet, the N  $89^{\circ}16'53''$  E, parallel the section line, for a distance of 160' & drive a 1" pipe, thence continuing another 100 feet drive a 1" pipe, thence continuing another 75 feet drive a 1" pipe (the foregoing describes the south line of lots 14, 13, & 12, respectively.)

NOTE: THE SECTION LINE DIVIDES CITY OF RHINELANDER & TOWN OF PINE LAKE. THE 30' & 30' AS STATED ABOVE DESCRIBES STREET OR AS PLOTTED IN THE SURVEY BY BRIGGS.

Setting over the pipe N  $62^{\circ}23'22''$  E 50' from the  $E \frac{1}{2}$  corner marking the S.W. corner of Lot 14, N  $62^{\circ}23'22''$  E for a distance of 102.4 set on 1" iron pipe (30' from pipe to water).

Setting over the S.E. lot pipe 160' from point of beginning, N  $62^{\circ}23'22''$  E, for a distance of 116.0 set a 1" pipe (30' from pipe to water).

Setting over the pipe 250' from the point of beginning, S.E. corner of lot 13, N  $62^{\circ}23'22''$  E for a distance of 119.5 set on iron pipe (30' pipe to water).

could not set over the S.E. corner pipe of lot 12,

(over)

117

AKING Part of Section 29, Twp 37N, Rng 9E.  
 Note - E 1/2 line run  
 parallel with section line.  
 because of bog area N-S line run parallel  
 with N 1/2 line, S-32.

2-826  
 PART OF SECTION 31, TWP 39N, RNG 10E

Running from the  $\frac{1}{4}$  corner  $39^{\circ} 4'$   $39^{\circ} 10'$  a point  
 in the town road, ran a traverse by random  
 line, following a cut out line, by others,  
 to the neighbor's corner, a wooden post &  
 pipe on the North shore of Indian Lake,  
 started from a "P" rock in the town road, by others  
 the point in road, with the information on  
 the reference pipe set south of road.

Corrected Bmg:  
 $S 83^{\circ} 57' 53'' E$   
 Corrected Distance:  
 55.985 chains  
 Run on the line on the corrected Bmg from  
 the m.c. to the  $\frac{1}{4}$  corner:  
 Departure West: 0.022 chains  
 corrected, blazed & pointed  
 line. (corrected Bmg)  
 $N 02^{\circ} 25' 58'' W$

AKING S-10, Twp 36N, Rng 8E (2-38-67)  
 S 1/2 of the N-S 1/2 line, S-10 & part of sec 15  
 Running a random traverse line from the  
 Ch. S-10 set by "Genist Engineering Co."  
 to the  $\frac{1}{4}$   $\frac{10}{15}$ , an iron pipe, set by "Genist  
 Eng. Co." followed their random line.  
 corrected Bmg:  $S 05^{\circ} 48' 55'' E$   
 Dist: 41.222 chains.

Upon arrival @ the  $\frac{1}{4}$   $\frac{10}{15}$ , began to search  
 for evidence of any old corner & found  
 two (2) scribbled squared posts & a Bmg  
 stump with iron marks,  $S 26^{\circ} 07' 33'' E$ ,  
 2.73 chains, from the  $\frac{1}{4}$  pipe, set by  
 "Genist Eng." the posts are old work  
 the corrected Bmg & distance from  
 "Gen." Ch. to the old  $\frac{1}{4}$   $\frac{10}{15}$  follows:  
 Bmg:  $S 06^{\circ} 41' 48'' E$  dist. stump  
 Distance: 12.872 chains  $N 76^{\circ} E$ ,  
 0.37 chains

(TRAVERSE)  
 Running from the  $\frac{1}{4}$  pipe, by "Gen." to  
 the section corner common to 10.11, 36-8,  
 an iron pipe, set by "Gen." 15.14  
 corr. Bmg:  $N 81^{\circ} 53' 16'' E$   
 Distance: 42.025 chains

When we arrived @ the section corner  
 began to search for evidence of any old  
 work & located an old "FOREST SERVICE"  
 marker in a black spruce swamp - we  
 dug out a very old squared post 2 1/2 feet  
 below swamp level & the old point. This  
 is  $N 49^{\circ} 41' 42'' E$ , 2.443 chains, from the pipe  
 set by "Gen."

Bmg. from the old  $\frac{1}{4}$   $\frac{10}{15}$  post  
 to the old section corner common  
 to 10.11, (36-8)  
 corr. Bmg:  $N 81^{\circ} 21' 00'' E$   
 Distance: 42.335 chains

Running from the  $\frac{1}{4}$   $\frac{10}{15}$ , by "Gen." to the  
 "General Land Office" monument common  
 to 16.15 (TRAVERSE)  
 corr. Bmg:  $S 86^{\circ} 41' 44'' W$   
 Distance: 40.769 chains

SEE PAGE 126 for additional  
 information. 120?

DRIVAS S 10 & 15 Twp. 36 N., Rng. 8 E.  
TRVERSE cont'd

Running from the old  $\frac{1}{4}$  post  $16 \frac{1}{4}$ , 36-8,  
to the "General Land Office" monument,  
corner to  $9 \frac{1}{4}$ , 10 (36-8)

corr. Brng:  $N 89^{\circ} 42' 23'' W$   
Diat:  $41.644$  chains.

NOTE: we will use the old corners to com-  
plete our survey. (N $\frac{1}{2}$ -east Line, S-15)

Running from the old section corner  
corner to  $13 \frac{1}{4}$ , 36-8, a random traverse  
line, to the  $\frac{1}{4}$  13/14 on old squared post &  
Brng. stump, located in a "Black Spruce" swamp

Brng. stump - S-62 E.,  
0.33 chains

corr. Brng:  $S 0^{\circ} 56' 03'' W$

Diat:  $41.116$  chains

@ the N $\frac{1}{4}$  location, found an old pipe  
Brng. stump with iron marks & a fence  
corner - the fence corner is not in  
alignment with the section corner  
& the  $\frac{1}{4}$  corner. Set the N $\frac{1}{4}$  pipe @  
 $20.556$  chains,  $S 0^{\circ} 56' 03'' W$ , of the section  
corner.

old Brng. stump -  $N 33^{\circ} W$ , 0.23 chains.

New Brng. trees - 3' m.s. -  $N 50^{\circ} W$

N $\frac{1}{2}$ , N $\frac{1}{4}$ , W-Line,  $\frac{1}{4}$  3' m.s. -  $N 88^{\circ} W$  0.40 chains.

Running from the "General Land Office"  
monument  $16 \frac{1}{4}$ , 10 (36-8) following old random  
line, to the N $\frac{1}{4}$  10/15, 36-8, set by a  
prior survey.

corr. Brng:  $S 82^{\circ} 04' 05'' E$   
Diat:  $20.479$  chains.

The above line recorded in other  
On side county book

DRIVAS N $\frac{1}{2}$  Line, S-15, Twp. 36 N., Rng. 8 E.

Running from the N $\frac{1}{2}$  15/14 36-8,  
S 33-47 22 W, to the N $\frac{1}{4}$  10/15, 36-8

@ 9.77 chs. leave highland &  
enter creek & swamp area.

@ 13.76 chs. center of creek.

@ 30.00 chs. leave swamp.

@ 34.50 chs. swamp (corner)

@ 45.75 chs. leave swamp.

@ 62.00 chs. to morock swamp.

@ 73.44 chs. leave morock swamp,  
highland to the N $\frac{1}{4}$ .

Departure South - 0.09 chains.  
corr. Brng:  $N 55^{\circ} 51' 00'' W$   
Distance:  $82.71$  chs.

The above line was run to establish temp-  
orary boundary control until a later  
date when we can establish the N $\frac{1}{2}$ .  
Line painted & corrected.

Running from the N $\frac{1}{2}$  N-3/4 Line S-10, 36-8  
at traverse random line, to the  $\frac{1}{4}$  3/10, 36-8,  
an iron pipe set by other parties.

OR WAS (2-20-167)  
 THAT PART OF SECTION 5 TWP. 38 N.,  
 R. 10 E., AS FOLLOWS: (TEMPORARY)

Running S 84° 00' 00" E from the point  
 set previously on the 1/4 N - 5/4 Line, 65.387  
 chains, S 02° 00' 45" E, from the 1/4 5/4,  
 1/4 5/4, (38-10)

Departure South: 0.387 chains  
 Corrected Bng: S 84° 31' 16" E  
 Dist: 59.664 chains

Line blazed & painted

From the 1/4 5/4, 38-10 south to  
 the 3/16<sup>th</sup> on iron pipe, set by prior  
 survey, i.e. to the section corner 89  
 THE ABOVE LINE RUN WITH HAND COM-  
 PASS (BLAZED & PAINTED)

SET ① TEMP C 1/4 PIPE

Bng. tree for the C 1/4

6' Cedar - N 2° E,  
 0.19 chains

7' Cedar - S 02° W,  
 0.585 chains

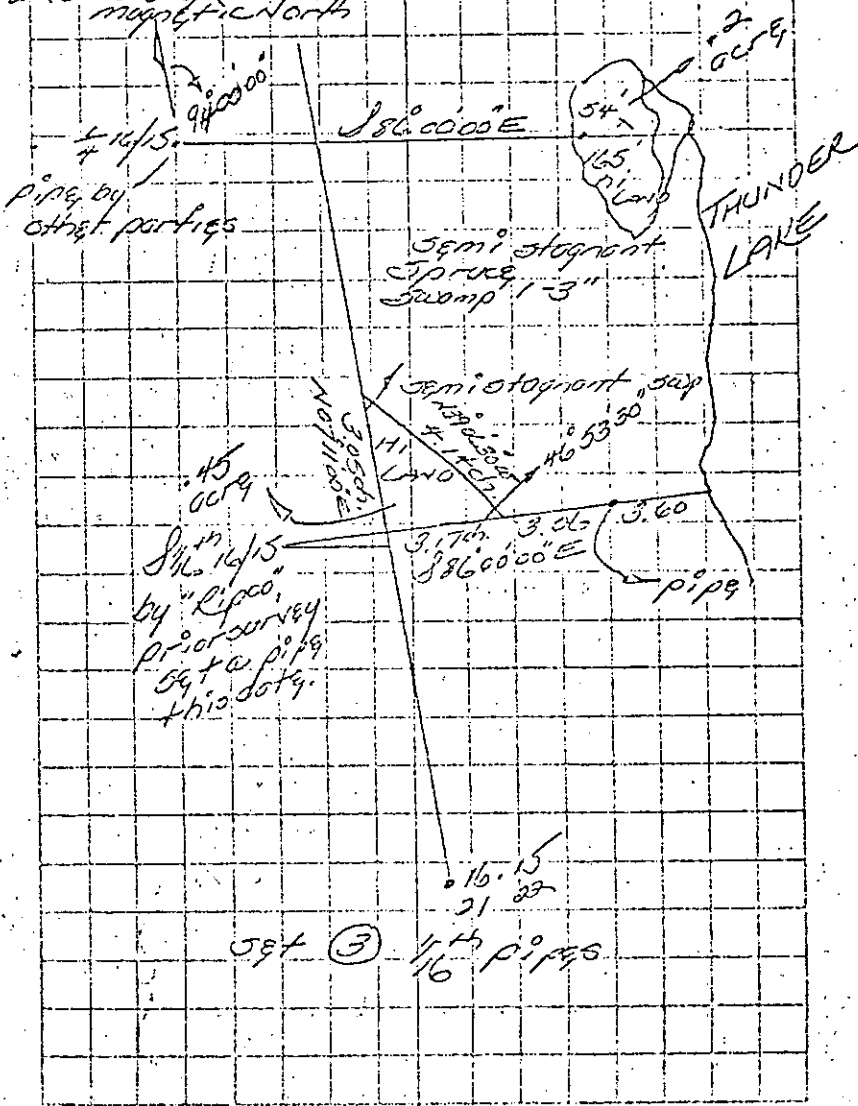
2-24-167 LOT 2, S-15, Twp. 38 N., R. 9, 10 E  
 (TEMPORARY)

Picking up the random line run by God-  
 dard @ an earlier date, from the  
 section corner corner to 16.15 to the 1/4 1/4  
 & establishing the corrected 1.22 line, ran  
 S 56° 00' 00" E, paralleling county frank  
 "A" for a distance of 19.83 chains to  
 "THUNDER LAKE" - set a 1" iron pipe, 6.40  
 stamped, "special marker corner,"  
 chains from the 1/4 1/4 on line.

Ran from the 1/4 1/4, S 86° 00' 00" E along  
 the E-W 1/4 line, for a distance of  
 8.637 chains, & set a 1" pipe, stamped,

LOT 2, S-15, Twp. 38 N., R. 9, 10 E.  
 cont'd. (TEMPORARY) 2-24-167

0.61 chains from the shore of "THUNDER  
 LAKE." (this work not exact - just  
 to get an idea how much highland is  
 available, magnetic North



OR 1148  
 (2-15-63) SECTION 32, TOWNSHIP  
 36 NORTH, RANGE 10 EAST.

EAST-WEST 1/4 LINE

Running from the W 1/4 corner common to sections 31 & 32, a traverse random line, North 27° 00' 00" E for a distance of 81.98 chains, to a deflection hub; thence S 67° 36' 25" E for a distance of 5.053 chains, to the East 1/4 pipe, set by "Kipco" prior to survey.

Bearings { CORRECTED BEARINGS:  
 019 NORTH 27° 30' 30" EAST  
 magnetic { CORRECTED DISTANCE:  
 72.35 CHAINS }

NORTH-SOUTH 1/4 LINE

Running from the 1/4 corner common to sections 29 & 32, a traverse random line, to enable following an old random line, previously established; to the 1/4 S 1/4 by "cons. collected";

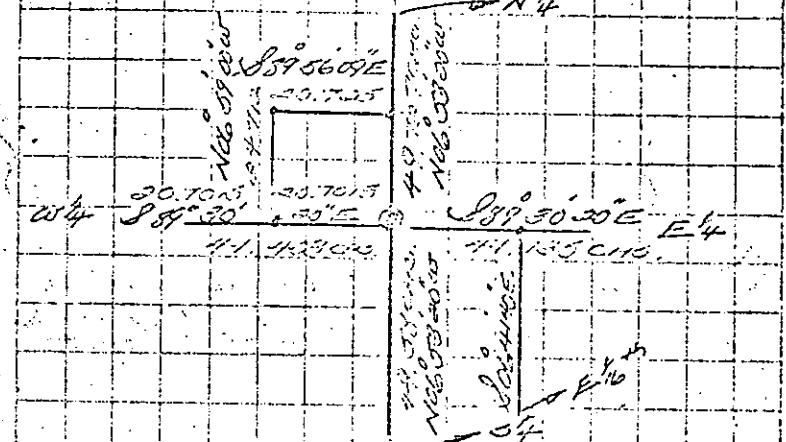
S 1/4	South 66° 47' 00" East	~ 4.56 chains
"	06° 46' 50" "	~ 17.08 "
"	06° 50' 00" "	~ 19.575 "
"	06° 48' 50" "	~ 5.969 "
"	06° 42' 30" "	~ 2.856 "
"	06° 45' 53" "	~ 6.333 "
"	06° 51' 53" "	~ 23.196 "
"	06° 32' 47" "	~ 8.90 "
"	19° 46' 22" "	~ 0.74 "

{ CORRECTED BEARING:  
 NORTH 06° 53' 20" WEST  
 CORRECTED DISTANCE:  
 94.337 CHAINS }

SECTION 32 TOWNSHIP  
 36 NORTH, RANGE 10 EAST

(CENTER 1/4)

Set the C 1/4 @ the intersections of the two corrected lines, according to "G.C.O." standards.



SETTING C.W. 1/6 & N.W. 1/6 & C.N. 1/6

Running from the C 1/4 N 69° 50' 50" W on corrected line, for a distance of 20.7015 chains; setting the C.W. 1/6 @ this point.

C.W. 1/6 Bearing trees:  
 { 9" CEDAR, SOUTH 25° EAST, 0.60 CHAINS.  
 { 9" CEDAR, SOUTH 32° WEST, 0.60 CHAINS }

Setting over the C.W. 1/6 back - sighting the corrected East 1/4 line, turning @ right 262° 31' 50", running N 66° 39' 00" W, on computed west 1/4 line, for a distance of 47.712 chains, setting the N.W. 1/6 @ this point.  
 (N.W. 1/6 bearing trees: 9" CEDAR, SOUTH 38° W, 0.32 CHAINS)

See next page for additional information.



US 1/2 North Line, from the N 1/4, set by "Consolidated" to the W 1/4, common to sections 29 & 32, set by "Consolidated," S 89° 35' 28" W, for a distance of 20.75 chs.

the above line was run as a random traverse; legs following:

N 89° 34' 05" W	16.46 chains
N 89° 33' 05" W	2.909 "
S 77° 35' 00" W	1.413 "

Corrected bearing: S 89° 35' 28" W  
 " Distance: 20.75 chains

Running from the N.W. 1/4 on computed Brg. S 89° 56' 09" E, for a distance of 20.75 chains, computed, to the C.N. 1/4 location, set the C.N. 1/4 @ this point.

C.N. 1/4 Brg trees  
 12 Birch yellow  
 S 13° East, 0.48 chains  
 & 4 Birch white  
 N 28° West, 0.12 chains

NOTE: Lines pertaining to ownership, set and pointed & bladed.

continued  
 Running from the C.E. 1/4 that was set S 89° 30' 20" E, and 20.75 chains from the C 1/4, S 32; running S 07° 35' 40" E, for a distance of 49.67 chains to the 1/4 corner common to 32; perpetuated by Consolidated Paper Co.

Departure East: 0.751 chains  
 corrected Brg: S 06° 41' 40" E.

Lines Bloned & pointed.

See S-5 for B.T.'s (35-10)

126 set @ 1/4 & 1/4 C 1/4 pipes.

Section 32, Twp. 30 N., R. 19. 10 East  
 cont'd.

C 1/4 Brg trees: 8" B.W. S-72° E, 0.145 chains.  
 & 9" Hemlock, S-87° E, 0.595 chains.

C.E. 1/4

COMPLETED - 3 - 21 - '68

SECTION 10, TOWNSHIP 36 NORTH,  
RANGE 8 EAST

Running from the  $\frac{1}{4}$  corner common to Sections 19 & 10, a traverse random line, to the  $\frac{1}{4}$  corner common to sections 10 & 11, set by "Genicot Engineering" company.

(NOTE) FOLEY JARVEUR, for "Genicot," informed me that they set the E  $\frac{1}{4}$  corner by running from the N.E. section corner to the N  $\frac{1}{16}$  & doubling the distance.

our traverse 1890 follow:

N 17° 47' 15" W	1.367 chains
N 36° 00' 05" E	56.786 "
S 33° 23' 10" E	2.737 "
S 05° 24' 14" W	5.573 "
N 75° 34' 05" E	11.863 "
N 75° 26' 36" E	32.042 "

E-W  $\frac{1}{16}$  LINE  
CORRECTED BRNG. - N 36° 18' 14" E

CORRECTED DIST. - 79.846 chains.

NORTH SOUTH  $\frac{1}{4}$  LINE

CORRECTED BRNG. - N 62° 17' 33" E  
CORRECTED DIST. - 86.502 chains

CENTER  $\frac{1}{4}$

Set the C  $\frac{1}{4}$  @ the intersection of the two corrected lines & found it to be approx. 20 feet East of the C  $\frac{1}{4}$  set by "Genicot." We also found our C  $\frac{1}{4}$  line more in alignment with the old standing line bearing tree, - the above line being a random traverse line to enable following "Genicot's" old line to the south, and following "Fox Ranch" road to the north, into the N  $\frac{1}{4}$  of the state.

NOTE: See page 119 for information pertaining to finding the Old  $\frac{1}{4}$   $\frac{10}{15}$  & tying into same.

See page 119 for additional information

SECTION 10, TOWNSHIP 36  
NORTH, RANGE 8 EAST

Running from the N.W. section corner a random traverse line to the  $\frac{1}{4}$   $\frac{3}{10}$  set by the state.

corrected Brng: N 89° 30' 44" E  
Distance: 40.89360 ins.

Run from the NW section on corrected line, N 89° 30' 44" E, for a distance of 20.445 chains setting the W  $\frac{1}{16}$   $\frac{3}{10}$ , also continued line for a distance of 6.26 chains to the western edge of the town road.

Run from the N.W. section corner S 69° 43' 08" E, for a distance of 45.922 chains to the G.L.O.  $\frac{1}{4}$   $\frac{9}{10}$  { Departure East: 0.253 chains.

{ Corrected Distance: 45.817 chains.  
Corrected Bearing: S 69° 24' 00" E

Set the N  $\frac{1}{16}$   $\frac{11}{10}$  @ 22.9235 chains S 69° 24' 00" E, from the N.W. section corner.

{ NOTE: } WHEN SETTING THE N  $\frac{1}{16}$  TH

FOUND AN OLD BIRCH WHITE SCALPED BEARING TREE, SOUTH 46° EAST, 0.135 CHAINS, FROM OUR CORNER LOCATION.

Running from the  $\frac{1}{4}$   $\frac{9}{10}$  S 61° 34' 04" E, for a distance of 40.94 chains to the "G.L.O." monument common to 10-15.

Departure East: 0.014 chains  
Corrected Brng: S 61° 35' 15" East

Corrected Distance: 40.94 chains  
Set a pipe @ 20.47 chains south of the W  $\frac{1}{4}$  and 0.007 chains west of the random just for public relations, neighborwise.

NOTE: SEE PAGES 119 & 120 FOR INFORMATION CONCERNING THE SOUTH LINE OF SECTION 10.

SEE NEXT PAGE

SECTION 10, TOWNSHIP 36 NORTH,  
RANGE 8 EAST, CONTO.

Running from the old section corner  
common to 10.11, a traverse, random  
line, to enable following "Genisot's" old  
random to the 1/4 10/11, set by "Genisot's"  
corrected Brg:  $S 06^{\circ} 54' 36'' E$   
corrected Distance: 40.039 chains.

Set the  $S \frac{1}{16}$  10/11, @ 20.0195 chains, on  
corrected line.

Running from the  $S \frac{1}{16}$  10/11, on a com-  
puted bearing of  $S 83^{\circ} 47' 39'' W$ , for  
a computed distance of 42.06 chains, to the  
 $C \frac{5}{16}$  location, (DID NOT SET PIPE)  
PIPS SET 3-4-67

NOTE: FOLLOWED REMNANTS OF AN  
OLD FENCE, BEING A FEW  
LINKS SOUTH, THROUGHOUT.

Running from the  $C \frac{5}{16}$  location, on  
a computed bearing of  $S 88^{\circ} 07' 39'' W$ , for  
a computed distance of 19.9445 chains to  
the  $S.W. \frac{1}{16}$  location, setting a pipe @ this  
point.

NOTE: STILL FOLLOWING OLD FENCE  
& AT THE ABOVE DISTANCE  
& BEARING HAD FENCE CORNER,  
BUT NO EVIDENCE OF A CORNER  
MONUMENT.

Running from the  $S.W. \frac{1}{16}$ , on a computed  
bearing of  $N 03^{\circ} 56' 37'' W$ , for a computed  
distance of 21.517 chains, to the  $C.W. \frac{1}{16}$ , set  
by us, this survey.

Departure West: 0.093 chains.  
corrected Brg:  $N 03^{\circ} 41' 47'' W$   
Distance: 21.517 chains

NOTE: AS WE WERE RUNNING ABOVE  
LINE, HIT REMNANTS OF OLD FENCE;  
IN FACT, HITTING SEVERAL POSTS.

Running from the  $N \frac{1}{16}$  9/10, on a  
computed bearing of  $N 87^{\circ} 26' 31'' E$ ,

SECTION 10, TOWNSHIP 36 NORTH,  
RANGE 8 EAST

For a computed distance of 19.731 chains,  
setting the  $N \frac{1}{16}$  @ this point.

NOTE: AS A CHECK ON THE  
ABOVE CORNER, RAN FROM  
THE  $W \frac{1}{16}$  3, ON COMPUTED  
BEARING SOUTHERLY TO  
THE  $N \frac{1}{16}$   
DEPARTURE - 0.005 EAST

ALL lines Blazed & pointed pertaining  
to "Lipco."

SECTION 30, TWP 38 N, RNG 10E

Reestablishing the section corner common to sections 30 & 31 by running from the N 1/2 30 to the 5 1/2" 31 East line S-30; Reset the W 1/4, which had been moved @ 19.51 chains North of the 5 1/2" on corrected magnetic bearing S 0° 01' 00" W. Drove 3" x 4" pipe 6" below ground level to be certain it would not be removed by "SOVINSKIS" farm machinery.

W 1/4 30 - "POWER POLE"  
S-86° E  
0.91 chains  
C.T. 18" Elm  
S-14° E, 1.71 chains

Set the sect. corner common to 30 & 31 @ 19.51 chains south of the 5 1/2" 31 on corrected magnetic bearing S 0° 01' 00" W. Drove a square headed bolt in the road which fell @ the intersection of the town roads. Did not set a ref. here as pipe because the farm machinery turning ground pulls them out.

SECTION 31, TWP 38 N, RNG 10E

Running from the N.E. section corner S 89° 05' 00" W to an iron pipe one inch dia in the North edge of the town road; 20.345 chains; E 1/2 30 - B.O. - "POWER POLE"

31 N 70° East  
0.56 chains

continuing S 89° 05' 00" W for a total distance of 40.690 chains to the 7/8 30

1/4 30 Buried a 3" steel stamped shaft approximately 9" below ground level @ the 7/8 corner location.

NOTE: Also a pipe driven in the blacktop of the town road, as a reference, 0.10 chains North of the 1/4 corner location.

CONT'D NEXT PAGE

SECTION 31, TWP 38 N, RNG 10E  
CONT'D.

Running from the 7/8 30 to the N.W. section corner @ 36 in E town road; N 80° 03' 56" W for a distance of 40.926 chains. (prior survey) Reset the W 1/2 @ 20.463 chains on line. Drove a pin in the town road.

W 1/2 30 - B.O. -

31 "POWER POLE"

N 48° W East

0.33 chains

E Underground telephone reference, # E-90

N - 19 West

0.215 chains

Running from the N.W. section corner, a traverse to the W 1/2 31 set by prior survey; 1st leg S 0° 04' 56" W for a distance of 23.235 chains; thence S 09° 11' 04" E for a distance of 1.05 chains; thence S 01° 28' 56" E for a distance of 15.773 chains to the 7/8

corrected Bng: S 0° 46' 44" E

Distance: 40.047 chains

Did not set the W 1/2 31

B.T. recorded previously

Running from the W 1/4 a traverse to the 5 1/2" 31; 1st leg S 01° 28' 56" E for a distance of 13.923 chains; thence S 11° 31' 14" W for a distance of 1.36 chains; thence S 01° 03' 11" E for a distance of 2.284 chains; thence S 04° 28' 11" E for a distance of 2.265 chains to the 5 1/2" set by prior survey.

corrected Bng: S 0° 54' 21" E

Distance: 19.778 chains

Running from the 5 1/2" on corrected Bng, S 0° 54' 21" E to the S.W. section corner -

Departure East: 0.053 chains

corrected Bng: S 0° 45' 08" E

Dist: 19.776 chains

Bng. trees recorded prior survey, 133

CONT'D NEXT PAGE

SECTION 31, TWP. 38 N., R. 10 E  
CONT'D

Running from the S.W. section corner  $S 187^{\circ} 55' 13" E$  for a distance of 39.034 chains to Delection Hub, thence  $S 84^{\circ} 30' 58" E$  for a distance of 2.36 chains to the 5<sup>th</sup>, set by prior survey, other parties.

Departure North: 0.140 chains

corrected Brng:  $S 87^{\circ} 43' 36" E$   
Distance: 4.389 chains

Set the  $1/16$  on line 30.6845 chains,  $S 87^{\circ} 43' 36" E$ , of the S.W. sect. cor.

$1/16$  31 Brng trees:

6" Black Spruce,  
N 10° east, 0.015 chs.  
9 6" Black Spruce,  
S 25° east,  
0.115 chains

SECTION 25, TWP. 36 N., R. 9 EAST

RUNNING FROM THE N.W. SECTION CORNER; SET BY "LAWRENCE" A TRAVERSE RANDOM LINE TO THE N.E. SECTION CORNER SET BY "LAWRENCE";

	$S 94^{\circ} 32' 49" E$	3.24	CHAINS
	$S 87^{\circ} 50' 48" E$	3.513	"
	$N 65^{\circ} 57' 12" E$	2.29	"
NORTH	$N 56^{\circ} 42' 50" E$	2.03	"
LINE	$S 76^{\circ} 51' 50" E$	3.37	"
	$S 74^{\circ} 59' 30" E$	6.915	"
	$N 57^{\circ} 32' 40" E$	4.419	"
	$N 52^{\circ} 19' 40" E$	3.38	"
	$S 74^{\circ} 41' 00" E$	3.481	"
	$N 81^{\circ} 40' 00" E$	7.825	"
	$S 63^{\circ} 11' 20" E$	10.906	"
	$N 53^{\circ} 14' 00" E$	28.868	"
	$S 07^{\circ} 26' 36" E$	2.567	"
	$S 23^{\circ} 45' 04" W$	2.012	"
	$S 25^{\circ} 41' 16" E$	3.31	"

134

SECTION 25, TWP. 36 N., R. 9 E  
CONT'D

COMPUTED BRNG. & DISTANCE:

SOUTH  $81^{\circ} 34' 03" E$  — 79.971 CHAINS  
SET THE  $1/16$  @ 19.992 CHAINS EAST OF THE N.W. SECTION CORNER  
BRNG. TREES:  
P.W. 9" — N 16° E, 0.415 CHS.  
P.W. 6" — S 33° W, 0.407 CHS.

SET THE  $1/16$  @ 59.985 CHAINS EAST OF THE N.W. SECT. CORNER.  
BRNG. TREES:

P.R. 5" S 50° EAST, 0.25 CHS.  
P.W. 5" N 30° EAST, 0.19 CHS.

SET THE  $1/16$  @ 59.978 CHAINS EAST OF THE N.W. SECT. CORNER

NO BRNG. TREES AVAILABLE

N.E. SECT. CORNER BRNG. TREES:

P.R. 10" N 53° W, 0.58 CHAINS  
P.R. 10" S 53° E, 0.58 CHAINS

RUNNING FROM THE N.E. SECTION CORNER A TRAVERSE RANDOM LINE TO THE E 1/4 CORNER BY "LAWRENCE"

CORRECT BRNG:  $S 01^{\circ} 30' 01" E$   
DISTANCE: 40.171 CHAINS.

SET THE  $1/16$  @ 20.0855 CHAINS SOUTH ON LINE — RAN CORRECT LINE FROM THE E 1/4 TO THE N 1/16  
N 1/2 BRNG. TREES: LAWRENCE'S N 1/16 APPROX. 0.30 CHS. N.E. OF OURS.  
P.W. 4" N 20° E, 0.37 CHAINS  
P.W. 5" S 34° W, 0.313 CHAINS

5/8 — EAST LINE

RUNNING A TRAVERSE RANDOM LINE FROM THE E 1/4 TO THE S.E. SECTION CORNER

$S 03^{\circ} 30' 00" E$  — 39.347 CHS.  
 $S 10^{\circ} 30' 20" W$  — 2.26 CHS.

135

S<sup>1</sup>/<sub>2</sub> EAST LINE, S-25, TOP 36  
N. RING 9. E. CONT'D.

CORRECT BRNG: S 02° 47' 31" E  
DISTANCE: 40.349 CHAINS

E<sup>1</sup>/<sub>6</sub>  
SOUTH  
LINE

RAN A TRAVERSE RANDOM  
LINE FROM THE S.E. SECTION  
CORNER TO THE S<sup>1</sup>/<sub>4</sub>:

N 87° 50' 50" W - 20.925

N 07° 21' 10" W - 0.384

CHAINS TO THE E<sup>1</sup>/<sub>16</sub> THENCE N 86°  
45' 10" W, 9.353 CHAINS.

N 85° 13' 48" W - 2.167 CHAINS

N 87° 25' 03" W - 3.043 "

N 86° 50' 13" W - 6.456 "

TO THE S<sup>1</sup>/<sub>4</sub> PIPE.

CORRECT BRNG: N 86° 45' 38" W  
DISTANCE: 42.00 CHAINS

BRNG TREES RECORDED PRIOR SURVEY.

3<sup>1</sup>/<sub>2</sub> N-S RAN FROM THE S<sup>1</sup>/<sub>4</sub> ON  
COMPUTED BEARING, N 01°  
48' 05" W, FOR A DISTANCE  
OF 42.00 CHAINS TO ENABLE GETTING  
THE C<sup>1</sup>/<sub>4</sub> LATER.

E-W RAN A TRAVERSE RANDOM  
LINE FROM THE E<sup>1</sup>/<sub>4</sub> TO THE  
C<sup>1</sup>/<sub>4</sub>:

CORRECT BRNG:

N 84° 28' 09" W

CORRECT DISTANCE: 32.071 CHS.

SET THE C<sup>1</sup>/<sub>4</sub> @ THE INTER-  
SECTION OF THE TWO TRUE  
LINES

BRNG TREES:

S. B., 5", N 32° E, 0.79 CHAINS

S. B., 4", S 32° W, 0.11 CHAINS

S<sup>1</sup>/<sub>2</sub> DISTANCE - 41.859 CHAINS

CORRECT BRNG - N 01° 48' 05" W

136

SECT. 25, TOP 36, RING 9 E  
CONT'D

C<sup>1</sup>/<sub>16</sub><sup>TH</sup>

SET THE C<sup>1</sup>/<sub>16</sub> @ 20.925 CHAINS NORTH  
OF THE S<sup>1</sup>/<sub>4</sub> ON LINE.

BRNG TREES:

P.O., 6", N-55° E, 0.280 CHAINS

S. B., 6", S-81° W, 0.45 CHAINS

NOTE: 0.10 NOT RUN THE N<sup>1</sup>/<sub>2</sub>, N-S  
LINE.

C<sup>1</sup>/<sub>16</sub><sup>TH</sup>

SET THE C<sup>1</sup>/<sub>16</sub> @ 20.923 CHAINS,  
S 84° 28' 09" E OF THE C<sup>1</sup>/<sub>4</sub>.

BRNG TREES:

P.R., 4", N-20° EAST, 0.285 CHAINS

S. P.R., 4", S-37° EAST, 0.38 CHAINS

C<sup>1</sup>/<sub>2</sub> DISTANCE: 40.566 CHAINS

CE<sup>1</sup>/<sub>16</sub><sup>TH</sup>

SET THE CE<sup>1</sup>/<sub>16</sub> @ 20.755 CHAINS,  
S 84° 28' 09" E OF THE C<sup>1</sup>/<sub>4</sub>

BRNG TREES:

P.R., 10", N 07° E, ~ 0.12 CHAINS

S. P.R., 8", S 50° W, ~ 0.465 CHAINS

E<sup>1</sup>/<sub>2</sub> DISTANCE - 41.505 CHAINS

SE<sup>1</sup>/<sub>4</sub>, NE<sup>1</sup>/<sub>4</sub>

RUNNING FROM THE N<sup>1</sup>/<sub>16</sub><sup>TH</sup>  
EAST LINE, N 83° 01' 51" W,

20.368 CHAINS, (COMPUTED), SET THE NE<sup>1</sup>/<sub>16</sub>

BRNG TREES:

BL. ASH, 9", S-30° E, 0.381 CHAINS

S. BL. ASH, 13", N-13° E, 0.298 CHAINS

RUNNING FROM THE NE<sup>1</sup>/<sub>16</sub><sup>TH</sup>, S 03° 00' 00" W  
TO THE CE<sup>1</sup>/<sub>16</sub><sup>TH</sup>

DEPARTURE - NONE

CORRECT DISTANCE - 20.567 CHAINS

RUNNING FROM THE CE<sup>1</sup>/<sub>16</sub><sup>TH</sup>, S 02° 19' 03" E,  
20.584 CHAINS, SET THE SE<sup>1</sup>/<sub>16</sub><sup>TH</sup>

(OVER)

137

S-25, TWP. 36 N., RNG 9 E  
CONT'D

BRNG TREES:

6L. SP. 8" S-39°W, 0.16 CHAINS  
E. 6L. SP. 3" S-TYPE, 0.335 CHAINS.

RUNNING FROM THE  $CS \frac{1}{16}$  TH  
S 85° 28' 33" E, 20.898 CHAINS TO THE  
SE  $\frac{1}{16}$  TH

NOTE: DUE TO SPRING THAW RAN  
THIS LINE TO SWAMPY EDGE - UNABLE  
TO SET UP IN SWAMP.

2-25-81  
SECT. 28, TWP. 38 N., RNG. 10 E.

OPEN COMPASS - NEW MAG. BRNG.

RUNNING FROM "VAUGHAN'S" C 1/4 TO THE  
W 1/4, SET BY PRIOR SURVEY, N 83° 40' 11" W,  
FOR A DISTANCE OF 38.078 CHAINS TO THE  
DEFLECTION HUB.

DISTANCE FROM THE DEFLECTION HUB  
TO THE W 1/4 CORNER - 2.046 CHAINS.

TOTAL DISTANCE - 40.124 CHAINS,  
DEPARTURE SOUTH - 0.126 CHAINS.

CORRECTED BRNG: N 83° 50' 58" W,  
CORRECT DISTANCE: 40.121 CHAINS.

SET THE  $CS \frac{1}{16}$  TH, N 83° 50' 58" W,  
CHAINS FROM THE C 1/4.

OPEN COMPASS -  $CS \frac{1}{16}$  TH TO  $SE \frac{1}{16}$  TH

RUNNING FROM THE  $CS \frac{1}{16}$  TH N 85° 50'  
W, A DISTANCE OF 40.177 CHAINS TO  
THE DEFLECTION HUB. DISTANCE E

BEARING DEFLECTION HUB TO THE  $SE \frac{1}{16}$  TH BY  
PRIOR SURVEY - 0.895 CHAINS, N 09° 01' 30" E

CORR. BRNG: N 84° 35' 49" W  
CORR. DISTANCE: 40.39 CHAINS.

SET THE  $SE \frac{1}{16}$  TH @ 20.195 CHAINS,  
N 84° 35' 49" W OF THE  $CS \frac{1}{16}$  TH. RERAN

CORRECTED LINE BACK TO THE  $CS \frac{1}{16}$  TH.

BRNG TREES:

SW  $\frac{1}{16}$  TH 6L. SP. 4" S-16°W, 0.284 CHAINS  
E. P.C.S. 3" N-28°E, 0.385 CHAINS.

SECTION 28 TWP. 38 N., RNG.  
10 E., CONT'D.

RUNNING FROM THE  $CS \frac{1}{16}$  TH S 01° 31' 45" E,  
FOR A DISTANCE OF 20.40 CHAINS TO A  
DEFLECTION HUB, THEN S 36° 47' 35" W,  
FOR A DISTANCE OF 0.25 CHAINS TO  
THE  $SW \frac{1}{16}$  TH.

CORRECT BRNG: S 01° 06' 05" E  
CORRECT DISTANCE: 20.716 CHAINS

NOTE: THE ABOVE SURVEY TO EN-  
ABLE ESTABLISHING BOUNDARIES &  
SEPARATING THE "SUGAR CAMP  
SCHOOL DISTRICT 40" FROM "RIFCO."  
THE EAST LINE OF THE NESUP RAN  
BY PRIOR SURVEY. REASON FOR BIG  
DEPARTURES USED MAGNETIC BEARINGS OF  
LINES RUN PREVIOUSLY FOR COMPUTATIONS.

2-25-81  
SECT. 27 TWP. 35 N., RNG. 10 E  
JAN. 89

RUNNING A TRANSVERSE RANDOM LINE FROM  
AN IRON PIPE (APL) ON THE SHORE OF  
"PELICAN LAKE" TO THE S.E. SECTION  
CORNER BY OTHERS

CORRECTED BRNG: N 01° 08' 44" E  
CORRECTED DISTANCE: 65.067 CHAINS

PROPORTIONED THE ABOVE DISTANCE  
AGAINST GOVT RECORD DISTANCE & SET  
THE  $SE \frac{1}{16}$  TH N 01° 08' 44" E, 20.176 CHAINS  
FROM THE S.E. SECT. CORNER.

BRNG TREES:

B. 4, 14" - S 89° W, 0.303 CHS.  
E. B. 4, 11" - S 82° E, 0.14 CHS.

BRNG TREES: 27.26 - M. S. 6", N-32° E,  
34.35 - 0.14 CHS.  
E. HEM, S-48° W,  
0.12 CHS.

PROPORTION AS  
FOLLOWS: RIFCO  
GOVT.

64.50 : 65.067 = 40.352  
40.00 x 20.176 CHAINS

RUNNING FROM THE N.W. SECTION  
CORNER (INTERSECTION OF RCH 105) FIXED

SECT. 27, TWP. 35 N., RANG. 10 E.,  
CONTO.

CONFIRMED BY MR. "AL HAEGLE",  
A RESIDENT & PROPERTY OWNER IN  
S-27 FOR MANY YEARS, TO THE S.W.  
SECTION CORNER LOCATION CONFIRMED  
BY MR. HAEGLE.

ALSO THE W<sup>1</sup>/<sub>4</sub> CORNER LOCATION  
N<sup>1</sup>/<sub>2</sub>, WEST LINE, BRNG. & DISTANCE:

S 01° 20' 30" E - 39.78 CHAINS

S<sup>1</sup>/<sub>2</sub>, WEST LINE, BRNG. & DISTANCE:

S 01° 15' 39" E - 39.888 CHAINS

RUNNING A TRAVERSE RANDOM  
FROM THE S.W. SECT. CORNER TO THE  
S.E. SECTION CORNER

CORRECTED BRNG: S 87° 44' 57" E

DISTANCE: 78.474 CHAINS

SET THE 5<sup>1</sup>/<sub>4</sub> N 87° 44' 57" S 79.387  
CHAINS FROM THE S.E. SECT. CORNER.

BRNG. TREES:

M.S.G., N-7<sup>1</sup>/<sub>2</sub> E., 0.95 CHS.

E M, R., G, S-6<sup>1</sup>/<sub>2</sub> W., 0.945 CHS.

RUNNING FROM THE EXISTING S.E.  
SECTION CORNER ON A COMPUTED  
BEARING & DISTANCE OF N 01° 08' 41" E,  
30.176 CHAINS, SET THE S<sup>1</sup>/<sub>16</sub> 27/26

BRNG. TREES: LISTED ON PRECEDING  
PAGE.

RUNNING FROM THE S<sup>1</sup>/<sub>4</sub> 27 ON COM-  
PUTED BRNG. & DISTANCE, N 0° 04' 30" W,  
20.027 CHAINS, SET THE C S<sup>1</sup>/<sub>16</sub> PIPE

BRNG. TREES:

TAM, 4" - N 83° W., 0.306 CHS.,

E TAM, 3" - N 85° E., 0.285 CHS.

SECT. 27, TWP. 35 N., RANG. 10 E.,  
CONTO.

RUNNING FROM THE C S<sup>1</sup>/<sub>16</sub> PIPE  
COMPUTED BRNG. & DISTANCE: N 87°  
59' 00" W, CHAINS, TO THE S<sup>1</sup>/<sub>16</sub> 27/26

DEPARTURE - NONE

BOUNDARY LINES OF THE S.E., S.E., &  
THE S.W., S.E. ARE BLAZED BUT NOT  
PAINTED.

SECTION 14, TWP. 36 N., RANG. 8 E.

RAN A TRAVERSE RANDOM LINE  
FROM THE S.E. SECTION CORNER LOCATION  
TO THE N.E. SECTION CORNER, PREV-  
IOUSLY ESTABLISHED BY "GENISOT"  
ENG. CO., WHICH FELL IN THE  
"WISCONSIN RIVER."

CORRECTED BRNG: N 61° 18' 19" W

DISTANCE: 80.209 CHAINS

GENISOT HAS AN "M.C." PIPE ON THE  
WEST SIDE OF THE RIVER, 2.614  
CHAINS WESTERLY FROM THE SECTION  
CORNER LOCATION. DID NOT SET THE  
E<sup>1</sup>/<sub>4</sub> CORNER.

COMPUTED THE BRNG. & DISTANCE FROM  
THE N<sup>1</sup>/<sub>4</sub> 14 E. RAN S 01° 12' 43" E, 20.31  
CHAINS, SET THE C N<sup>1</sup>/<sub>16</sub> PIPE

BRNG. TREES:

C N<sup>1</sup>/<sub>16</sub> 12, 13" S - 0°, 0.255 CHAINS

E P.W., 17" S - 53° E, 0.555 CHAINS

BRNG. TREES

11 - M.R., 3" - S - 46° W, 0.248 CHS.

14 - OAK, 12" - N - 11° W, 0.72 CHS.

RAN FROM THE C N<sup>1</sup>/<sub>16</sub> PIPE TO THE  
N<sup>1</sup>/<sub>16</sub> 15/14, COMPUTED, N 89° 19' 38" W,  
40.622 CHAINS -

DEPARTURE - NONE

INFORMATION CONCERNING N<sup>1</sup>/<sub>16</sub> 15/14  
C N PIPE 120, THIS BOOK.

(OVER)



SECT. 14, TWP. 36N, RNG. 8E.  
CONTO.

ALL COMPUTATIONS FOR 5-14  
WERE COMPUTED FROM GRAB # 8-11,  
DISTANCES FROM CORNER IN 8-11,  
15, & 10, ABOVE TOWNSHIP

12-69 } SECTION 11, TWP. 36N, RNG. 8E

RUNNING FROM THE S.W. SECT. CORNER  
COMMON TO SECTS. 10, 11, AN OLD POINT

5 1/2" "FOREST SERVICE" MARKER TO THE SECT.  
CORNER COMMON TO SECTS. 11, 12 IN THE  
"WISCONSIN RIVER" TRAVERSE LINE

CORRECT BRNG:  $S 88^{\circ} 57' 51'' E$   
CORRECT DISTANCE: 80.46 CHAINS

SET THE 1/4"  $S 88^{\circ} 57' 51'' E$  40.23 CHAINS  
FROM THE 1/4" S.W. SECTION CORNER

BRNG TREES:

M.R. 3",  $S - 46^{\circ} W$ , 0.24 CHAINS  
& OAK 12",  $N - 11^{\circ} W$ , 0.72 CHAINS

RAN FROM THE 1/4"  $N 09^{\circ} 27' 51'' W$ ,  
30.307 CHAINS COMPUTED, SET THE  $CS 1/16$ "

BRNG TREES:

M.R. 5",  $N - 68^{\circ} W$ , 0.12 CHAINS  
& M.R. 4",  $N - 04^{\circ} E$ , 0.14 CHAINS

RAN FROM THE  $CS 1/16$ "  $N 89^{\circ} 01' 54'' W$ ,  
TO THE  $S 1/16$ " 10/11

DEPARTURE SOUTH: 0.09 CHAINS

CORRECTED BRNG: 39.25 CHAINS

CORRECTED DISTANCE: 39.29 CHAINS

$N 89^{\circ} 01' 54'' W$

NOTE: FOR CONTROL FOR SECT. 11, RAN  
FROM THE  $CS 1/16$ " SET BY "GENE" ON  
THE NORTH SIDE OF "HI-WAY 8" TO  
THE N.W. SECTION CORNER, A CONCRETE

142

SECTION 11, TWP. 36N, RNG. 8E.  
CONTO

MONUMENT BY OTHER PARTIES, A  
TRAVERSE RANDOM LINE:

CORRECT BRNG:  $N 07^{\circ} 56' 53'' W$

CORRECT DISTANCE: 39.841 CHAINS

RAN FROM THE N.W. SECTION CORNER,  
A TRAVERSE RANDOM LINE TO THE,  
N 1/4" A CONCRETE MONUMENT, BY  
OTHER 11 PARTIES

CORRECT BRNG:  $N 86^{\circ} 55' 58'' E$

DISTANCE: 36.944 CHAINS

COMPUTED BRNG & DISTANCE OF THE  
NORTH SOUTH 1/4" LINE:

$N 09^{\circ} 27' 51'' W$

DISTANCE: 33.071 CHAINS

$S 1/2$  WEST LINE BRNG:  $N 65^{\circ} 54' 36'' W$ ,  
50.015 CHAINS

SECTION 9, TWP. 36N, RNG. 8E.

SET THE  $CS 1/16$ " BY RUNNING FROM  
THE  $NW 1/4$  SET BY "NORTHWOODS" SUR-  
VEYORS ALONG THE TRUE LINE UNTIL  
THE POINT OF INTERSECTION WITH THE  
 $N 1/2$  OF THE NORTH SOUTH 1/4" LINE, RUN  
BY PRIOR SURVEY; THENCE FROM THE  
 $CS 1/16$ " TO THE  $CS 1/4$  SET BY "NORTH-  
WOODS"; THEN A TRAVERSE FROM THE  
 $CS 1/4$  TO THE  $E 1/4$  (G.C.).

RAN THE CORRECT LINE FROM THE  $CS 1/4$ "  
 $N 88^{\circ} 00' 07'' E$ , 21.821 CHAINS & SET THE  $CS 1/16$ "  
NO B.T.S. AVAILABLE

RAN FROM THE  $CS 1/16$ "  $N 07^{\circ} 01' 49'' W$ ,  
33.416 CHAINS COMPUTED & SET THE  
 $NE 1/4$ " PINE (NO B.T.S. RECORDED)

RAN FROM THE  $NE 1/16$ "  $N 86^{\circ} 55' 58'' E$ ,  
30.943 CHAINS TO THE  $N 1/16$ " 9/10,

DEPARTURE - NONE

143

SECTION 31, TWP. 38 N., RANG. 10 E.

REESTABLISHING THE SECTION CORNER CORNER CORNER TO 30.29 BY RUNNING FROM THE N<sup>1</sup>/<sub>16</sub> S-30, TO THE S<sup>1</sup>/<sub>16</sub> S-30 FOUND THAT THE E<sup>1</sup>/<sub>4</sub> HAD BEEN MOVED & RESET ON LINE - SEE PAGES 133 & 134 FOR FURTHER INFORMATION.

10-3-69

SECTION 32, TWP. 37 N., RANG. 7 E.

TRANSIT: RUNNING A TRAVERSE RANDOM LINE FROM THE C<sup>1</sup>/<sub>4</sub> BY OTHER PARTIES (FOLLOWING OLD LINE) TO THE <sup>39</sup>/<sub>32</sub> PIPE, BY OTHER PARTIES -

CORRECT BRNG: N 01° 00' 01" E

CORRECT DISTANCE: 40.155 CHAINS

RAN THE CORRECTED LINE FROM THE N<sup>1</sup>/<sub>4</sub> S 01° 00' 01" AT 30.078 CHAINS & SET ON PIPE, FOUND THEIR CN<sup>1</sup>/<sub>16</sub> TH TO BE ONE FOOT TOO FAR WEST & GOOD ON DISTANCE

1 CN<sup>1</sup>/<sub>16</sub> TH BRNG TREES: (BY OTHERS)

OAK 2', N-55° E 8.4 FEET  
NO BR @ THE C<sup>1</sup>/<sub>4</sub>

12-1-69

SECTION 34, TWP. 37 N., RANGE 8 E

N-S <sup>1</sup>/<sub>4</sub> LINE

RUNNING A TRAVERSE RANDOM LINE FROM THE S<sup>1</sup>/<sub>4</sub> CORNER ("STATE HIGHWAY" DEPT. PERPETUATED THE S<sup>1</sup>/<sub>4</sub> CORNER BY SETTING A CONCRETE MONUMENT & GRASS CAP 66.9' NORTH OF CORNER LOCATION) DROVE A ONE INCH X 3/4" PIPE @ THIS LOCATION) THENCE N 83° 59' 30" E, 13.537 CHS, THENCE N 10° 01' 35" W, 17.63 CHS, THENCE N 08° 34' 10" E, 33.477 CHS, THENCE N 58° 07' 40" W, 5.26 CHS, THENCE N 22° 10' 23" E, 3.52 CHS, THENCE

144

SECTION 34, TWP. 37 N., R. 8 E.,

CONT'D

N 83° 59' 30" E	6.744 CHAINS
N 83° 53' 20" W	5.630 "
N 58° 47' 50" W	7.687 "
N 83° 05' 30" W	5.11 "
N 06° 11' 15" E	4.748 "
N 74° 05' 00" W	1.92 "
N 01° 36' 40" W	3.90 "

TO A ONE INCH PIPE DENOTING THE N<sup>1</sup>/<sub>4</sub> CORNER (SET BY OTHERS)

COMPUTED BRNG: N 04° 49' 36" W

COMPUTED TOTAL DISTANCE: 79.058 CHS

OLD B.T. - 8" B.W. S 85° EAST

NEW B.T.'S - 5" B.W. N 74° E, 0.05 CHS.

& 3" DICK PINE - S 76° E, 0.27 CHS.

E-OF <sup>1</sup>/<sub>4</sub> LINE

RUNNING FROM THE "G.L.O." W<sup>1</sup>/<sub>4</sub> PIPE & GRASS CAP S 37° 03' 14" E, TO THE E<sup>1</sup>/<sub>4</sub> CORNER BY OTHER PARTIES.

DEPARTURE NORTH - 0.046 CHS.

CORRECT BRNG: S 87° 00' 16" E

CORRECT TOTAL DISTANCE: 73.66 CHAINS

W<sup>1</sup>/<sub>4</sub> OLD BRNG STUMPS - PINE, S 85° E,

0.50 CHS

& PINE, S 82° W,

0.10 CHS.

NO B.T.'S AVAILABLE AT THE E<sup>1</sup>/<sub>4</sub>

CENTER <sup>1</sup>/<sub>4</sub>

SET THE C<sup>1</sup>/<sub>4</sub> @ THE INTERSECTION OF THE CORRECT N-S & EAST <sup>1</sup>/<sub>4</sub> LINES AS SHOWN IN DIAGRAM BELOW:

S 87° 00' 16" E

39.365

72.39

C<sup>1</sup>/<sub>4</sub> BRNG TREES

4' BL. SPRUCE,

16' N 15° WEST,

0.13 CHAINS

37.095

17.0475

17.0475

36.729

3" BL. SPRUCE

& 16' N 68° EAST

0.13 CHAINS

N 69° 49' 20" W  
36.729

145

SECTION 34 TWP 37N, R. 8E  
CONT'D. E 1/2 NORTH LINE

RUNNING A TRAVERSE RANDOM FROM THE N 1/4 TO THE N.E. SECT. CORNER, AN IRON PIPE BY OTHERS:

COMP. OF  
CRANE  
TRAVELER  
N 86° 56' 00" W

$S 01^{\circ} 56' 40" E \sim 3.90 CHS.$   
 $S 00^{\circ} 07' 10" E \sim 12.00$   
 $S 67^{\circ} 50' 30" E \sim 8.084$   
 $N 89^{\circ} 54' 30" E \sim 10.47$   
 $S 81^{\circ} 31' 30" E \sim 4.873$

CORRECT BRNG:  $S 86^{\circ} 37' 01" E$   
CORRECT DISTANCE: 39.011 CHAINS

NE CORNER FALLS IN SWAMP ~ NO B.T.S.  
ONE INCH PIPE

SET THE E 1/16 @ 19.5055 CHAINS,  $S 86^{\circ} 37' 01" E$  OF THE N 1/4 FROM THE TRAVERSE LINE. RAN FROM THE E 1/16 THE CORRECT LINE, N 86° 37' 01" W TO THE N 1/4.

DEPARTURE ~ 0.01 CH.

HILLY & SEVERAL STEEP SHORT SET-UPS CONTRIBUTED TO DEPARTURE OF 1 LINK BLAZED & PAINTED LINE

B.T. FOR E 1/16 9" OAK, N-19° EAST, 0.14 CHAINS

NORTH 1/2 WEST LINE

THE FOLLOWING IS TO ESTABLISH THE N 1/16 IN ITS CORRECT LOCATION AS SHOWN ON "GEN. ENG. CO., MAP # 1811-1 DATED 7-12-48 & REVISED 7-7-56," SURVEY BY "WINCENTSEN."

SETTING OVER A "G.L.O." CORRECTION CORNER PIPE & FORESIGHTING G.L.O. ANGLE POINT # 13, THENCE TURNING AN INTERIOR ANGLE @ RIGHT OF  $61^{\circ} 45' 00"$  FOR A DISTANCE OF 659.04 FEET SET THE NORTH 1/16 AS CALLED FOR BY "GEN. ENG. MAP # 1811-1," THENCE RAN FROM THE N 1/16 TO THE "G.L.O." W 1/4.

SECTION 34 TWP 37N, R. 8E.  
N 1/2 WEST LINE, CONT'D

$S 04^{\circ} 20' 13" E$  FOR A DISTANCE OF 1404.89 FEET TO DEFLECTION HUB, THENCE  $S 04^{\circ} 43' 39" E$ , 305.3' TO THE "G.L.O." W 1/4.

DEPARTURE WEST: 3.0'  
CORRECT BEARING:  $S 04^{\circ} 27' 20" E$   
NOTE: DISTANCE: 21.586 CHAINS

BY TURNING ANGLE AS CALLED FOR ON MAP 1811-1 FROM THE N 1/16 THAT WE GET THIS SURVEY ACCORDING TO THE CALLS ON AIDING MAP I FIND THE ANGLE TO BE  $86^{\circ} 33' 51"$  & NOT  $86^{\circ} 38' 00"$  AS CALLED FOR BY "WINCENTSEN."

RAN FROM THE N 1/16 & SET THE N.W. SECTION CORNER ON CORRECT BEARING, N 04° 27' 20" W FOR A DISTANCE OF 21.154 CHAINS AS CALLED FOR BY "WINCENTSEN," & FELL APPROXIMATELY 0.03 CHAINS EAST OF A PAINTED BOARD DENOTING LOTS 10 & 11 BY OTHERS. ~ ALSO SET HUB @ 21.586 CHS.

DECIDED TO LEAVE N.W. SECT. CORNER @ 21.154 CHS. NORTH OF THE N 1/16.

N 1/16 B.T.S. (BRNG. TREES ~ SEC. COR. 38.27 COMMON TO 33 34  
8" R.P. 6" M.R., N-60° W, 0.17 CHS.  
N-14° E, 9" M.R., S-60° W, 0.135 CHS.  
0.43 CHS. 6" M.R., S-16° E, 0.21 CHS.  
9" R.P.  
N-58° E  
0.50 CHS. } W 1/2 NORTH LINE

RUNNING FROM THE N 1/4 BY OTHERS TO THE N.W. SECT. CORNER, SET BY US, THIS SURVEY, N 86° 44' 50" W FOR A DISTANCE OF 39.034 CHAINS.

DEPARTURE SOUTH: 0.025 CHS.  
CORRECTED BRNG: N 86° 44' 50" W  
CORRECTED DISTANCE: 39.034 CHS.  
PAINTED & BLAZED LINE

N 1/2 E 1/16 LINE

RUNNING FROM THE E 1/16 37 34

SECT. 34, TWP. 37 N., R. 8 E. CONT'D.  
N<sup>1</sup>/<sub>2</sub>, E<sup>1</sup>/<sub>16</sub> TH LINE

TO THE CE<sup>1</sup>/<sub>16</sub> TH S<sup>1</sup>/<sub>4</sub> 91° 19' E, FOR A  
DISTANCE OF 41.932 CHAINS;

DEPARTURE WEST: 0.892 CHAINS

CORRECTED BRNG: S<sup>1</sup>/<sub>4</sub> 01° 23' 47" E

CORRECT DISTANCE: 41.932 CHAINS

PAINTED & BLAZED LINE

Q.T.S FOR CE<sup>1</sup>/<sub>16</sub> TH WERE PUT IN BUT  
INFORMATION ON SAME NOT RECORDED,  
WILL GET "INFO" @ LATER DATE.

S<sup>1</sup>/<sub>2</sub> EAST LINE

RUNNING A TRAVERSE RANDOM  
LINE FROM THE E<sup>1</sup>/<sub>4</sub> BY OTHERS TO  
THE S.E. SECTION CORNER SET BY "G.L.O."  
PIPE & GRASS CAP AS SHOWN BELOW:

N 83° 32' 00" E ~ 6.015 CHS.

S 11° 32' 25" E ~ 5.605 "

S 03° 16' 30" W ~ 6.967 "

S 34° 38' 30" W ~ 4.061 "

S 10° 47' 50" E ~ 9.718 "

S 12° 14' 15" E ~ 9.972 "

S 57° 13' 15" W ~ 0.73 "

CORRECT BRNG: S 13° 15' 05" E

" DISTANCE: 35.081 CHS.

E<sup>1</sup>/<sub>2</sub> SOUTH LINE

RUNNING A TRAVERSE RANDOM  
LINE FROM THE "G.L.O." J.E. SEC  
CORNER TO THE S<sup>1</sup>/<sub>4</sub> PERPETUATED  
BY "STATE" AS FOLLOWS:

S 83° 55' 40" W ~ 17.621 CHS.

S 89° 16' 15" W ~ 22.152 "

CORRECT BRNG: ~~S 83° 55' 40" W~~

" DISTANCE: S 87° 59' 25" W

39.198 CHAINS.

148

SECT. 34 TWP. 37 N., R. 8 E.

ORINAS  
CONT'D. (W<sup>1</sup>/<sub>2</sub> - SOUTH LINE)

SETTING OVER THE S<sup>1</sup>/<sub>4</sub> &  
RUNNING TO THE S.O. SECTION  
CORNER PERPETUATED BY "STATE"  
HI-WAY DEPT.

CORRECT BRNG: S 86° 09' 25" W

" DISTANCE: 40.606 CHS.

ORINAS

SECTION 13, TWP. 38 N., R. 16 E.

THE FOLLOWING TRAVERSE ALONG  
"KINGS" ROAD

RUNNING A TRAVERSE FROM THE <sup>1</sup>/<sub>4</sub>  
CORNER PIN COMMON TO SECTIONS 13 & 14  
N 88° 28' 06" E, 16.991 CHS., THENCE N 87° 45' 53" E,  
15.881 CHAINS TO THE SECTION CORNER  
COMMON TO 13, 18, 24 & 19 -

CORRECT BRNG: N 87° 45' 53" E

" DISTANCE: 33.276 CHS.

THENCE CONTINUING A TRAVERSE FROM  
THE SECTION CORNER ALONG "KINGS"  
ROAD TO THE <sup>1</sup>/<sub>4</sub> CORNER PIPE COMMON TO  
13 & 18 SET BY OTHER PARTIES, AS  
FOLLOWS:

N 0° 59' 46" W ~ 10.654 CHAINS

N 0° 06' 41" W ~ 16.715 "

N 0° 37' 04" E ~ 12.59 "

N 84° 13' 59" E ~ 0.781 "

CORRECT BRNG: N 0° 34' 30" W

" DISTANCE: 59.69 CHAINS

THENCE CONTINUING A TRAVERSE FROM THE  
<sup>1</sup>/<sub>4</sub> CORNER COMMON TO 13 & 18 TO THE SECTION  
CORNER COMMON TO SECTIONS 13, 7, 13 & 18 WHICH  
IS LOCATED IN THE ROAD (COUNTY TRUNK "A")  
& SET BY OTHER PARTIES (TRAVERSE AS FOLLOWS)

ALONG { S 84° 13' 59" W ~ 0.781 CHAINS

"KINGS" { N 0° 05' 21" W ~ 9.639 "

ROAD { N 01° 01' 31" W ~ 27.15 "

{ N 11° 04' 11" W ~ 2.565 "

{ N 83° 51' 15" E ~ 0.524 "

CORRECT BRNG: N 02° 13' 45" W

" DISTANCE: 39.748 CHAINS

CONT'D. NEXT PAGE

149

CONT'D. SECT. 12, TWP. 38 N., RANG. 9E

THENCE CONTINUING IN TRANSVERSE FROM THE SECTION CORNER COMMON TO SECTIONS 12, 7, 13 & 18, TO THE 1/4 CORNER PIPE (BY OTHER PARTIES) COMMON TO SECTIONS 12 & 13, LOCATED IN THE OLD ROAD BED OF "A" AC. FOLLOWS:

S 25° 01' 19" W ~ 0.534 CHAINS  
 S 32° 03' 19" W ~ 80.965 "  
 S 86° 03' 19" W ~ 12.991 "

CORRECT BRNG: S 55° 48' 00" W  
 " DISTANCE: 34.31 CHAINS

EAST-WEST 1/4 LINE

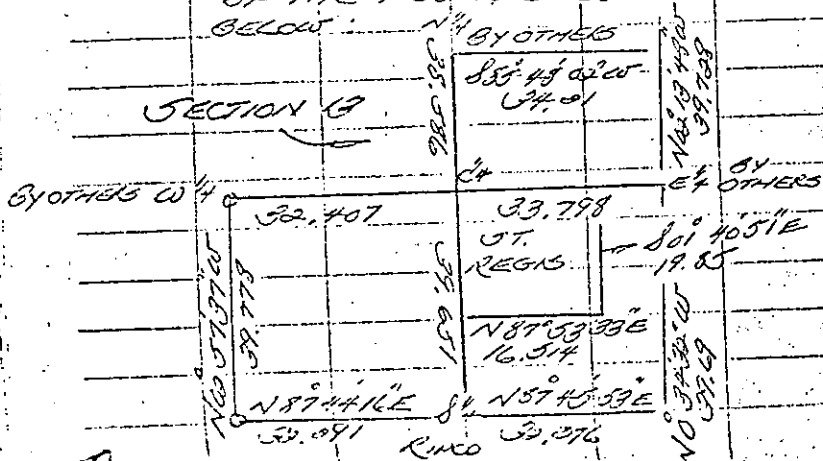
RUNNING FROM THE 1/4 CORNER COMMON TO SECTIONS 12 & 18 TO THE 1/4 CORNER COMMON TO SECTIONS 14 & 13 (BY OTHERS) S 57° 00' 50" W FOR A DISTANCE OF 66.199 CHAINS.

DEPARTURE SOUTH: 0.896 CHAINS  
 CORRECTED BRNG: S 89° 47' 23" W  
 " DISTANCE: 66.805 CHAINS

NORTH-SOUTH 1/4 LINE

RUNNING ON A COMPUTED BRNG. N 02° 47' 35" W TO INTERSECT THE CORRECTED E-W 1/4 LINE - SET THE C 1/4 @ THE INTERSECTION OF THE TWO 1/4 LINES AS SHOWN BELOW.

SECTION 12



CONT'D. SECT. 13, TWP. 38 N., RANG. 9E

RUNNING FROM THE S 1/16<sup>TH</sup> EAST LINE, S 89° 03' 35" W FOR A DISTANCE OF 33.638 CHAINS TO THE C. S. 1/16<sup>TH</sup>.

DEPARTURE: NONE

SET THE S. E. 1/16<sup>TH</sup> @ 16.54 CHAINS ON LINE, RUNNING FROM THE C. S. 1/16<sup>TH</sup> S 01° 40' 51" E, FOR A DISTANCE OF 19.85 CHAINS TO THE S. E. 1/16<sup>TH</sup>.

DEPARTURE: NONE

BRNG TREES: { C 1/4 } ~ TAM. 6"  
 N 22° E, 0.65 CHAINS  
 CEDAR 4"  
 N 51° E, 0.10 CHAINS  
 CEDAR 5"  
 S 65° W, 0.09 CHAINS

{ C 5/16 } TAM. 6"  
 N 35° E, 0.80 CHAINS  
 TAM. 7"  
 S 65° E, 0.87 CHAINS

{ C 1/16 } BLACK ASH 7"  
 N 68° E, 0.91 CHAINS  
 BLACK ASH 4"  
 N 73° W, 0.175 CHAINS

{ S 6 1/16 } TAM. 5"  
 S 10° E, 0.85 CHAINS  
 CEDAR 5"  
 N 43° W, 0.92 CHAINS

ST REGIS OWNERSHIP PLAZED & PAINTED. (N.W., S.E.)

THUNDER LAKE LEASE AREA

11-3-70  
 LINE  
 RUNNING A TRAVELER RANDOM, FROM  
 THE MEANDER CORNER N 1/2" LINE, S-10,  
 TWP. 38 N, R. 10 E, TO THE N.E. LOT 19, RE,  
 AREA "C", AS FOLLOWS:

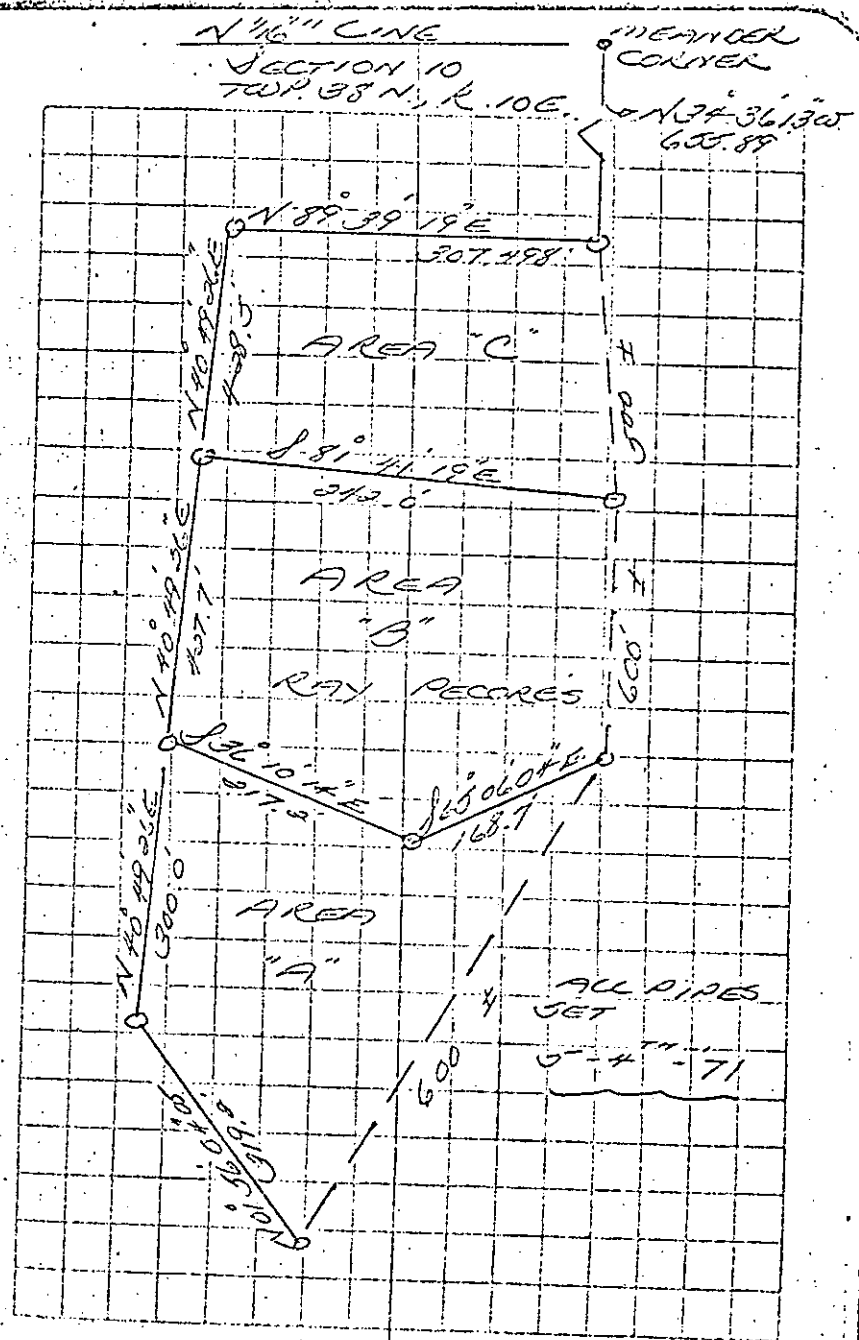
S 21° 03' 30" W	~ 133.0
S 22° 31' 30" E	~ 80.0
S 58° 18' 35" E	~ 169.1
S 31° 26' 45" E	~ 195.2
S 07° 45' 00" E	~ 171.9
CORRECT BRNG:	
S 34° 36' 13" E	

AREA "C" - CORRECT DISTANCE:  
655.89'

THENCE S 89° 39' 19" W FOR A DISTANCE  
 OF 307.498' TO THE N.W. LOT CORNER  
 OF AREA C; THENCE S 40° 49' 26" W,  
 FOR A DISTANCE OF 438.5' TO THE S.W.  
 LOT CORNER AREA C; THENCE S 81° 41' 19" E  
 FOR A DISTANCE OF 319.0' TO THE S.E. LOT  
 CORNER OF AREA C.

AREA "B" - FROM THE N.E. LOT CORNER,  
 N 81° 41' 19" W, FOR A DISTANCE  
 OF 342.0' TO THE N.W. LOT  
 CORNER; THENCE S 40° 49' 26" W,  
 FOR A DISTANCE OF 437.7'  
 TO THE S.W. LOT CORNER;  
 THENCE S 36° 10' 14" E, FOR A  
 DISTANCE OF 317.2' TO A PIPE;  
 THENCE S 65° 06' 04" E, FOR A  
 DISTANCE OF 168.7' TO THE S.E.  
 LOT CORNER.

AREA "A" - FROM THE N.E. LOT CORNER,  
 N 61° 01' 46" W, FOR A DISTANCE  
 OF 168.7' TO A PIPE; THENCE  
 N 36° 10' 14" W, FOR A DISTANCE OF  
 317.2' TO THE N.W. LOT CORNER;  
 THENCE S 40° 49' 26" W, FOR A  
 DISTANCE OF 300.0' TO A PIPE;  
 THENCE S 61° 56' 04" E, FOR A DISTANCE  
 OF 319.2' TO THE LOT CORNER



ALL PIPES  
 SET  
 5'-4\"/>

SECTION 14, TWP 39 N,  
RNG. 4 E. (S. 20-7)

RUNNING A TRANSVERSE RANDOM LINE FROM THE N.E. SECTION CORNER SET BY "NEKCOGA EDWARDS" PAPER CO., TO THE N.W. SECTION CORNER SET BY "NEKCOGA" AS FOLLOWS:

S 89° 51' 20" W	35.774 CHAINS
N 87° 10' 10" W	13.17 "
N 84° 38' 00" W	1.365 "
N 86° 23' 20" W	18.347 "
N 88° 44' 50" W	2.36 "
N 85° 17' 10" W	2.084 "
S 87° 59' 40" W	3.095 "
S 87° 51' 10" W	1.42 "

CORRECT BEARING: N 88° 43' 41" W  
DISTANCE: 77.347 CHAINS

SET THE N 1/4 CORNER CEDAR POST & A 3" IRON PIPE @ 38.674 CHAINS. THE CORNER FALLS IN 300' AREA APPROXIMATELY 3 CHAINS WEST OF "MERCURY'S" RACE TRACK USED FOR PROVING SNOW MOBILES. NO B.T.S OR B.O.S AVAILABLE.

RUNNING FROM THE N 1/4, A TRANSVERSE RANDOM LINE TO THE S 1/4, BY "NEKCOGA" AS FOLLOWS:

S 0° 55' 58" E	6.072 CHAINS
S 01° 33' 48" E	49.109 "
N 88° 27' 12" E	1.489 "
S 01° 33' 48" E	19.13 "
S 03° 30' 12" W	4.41 "

CORRECT BEARING: S 02° 08' 33" E  
DISTANCE: 78.895 CHAINS

RAN CORRECT LINE, N 02° 08' 33" W FROM THE S 1/4, FOR A DISTANCE OF 19.724 CHAINS. SET PICKET @ 20.00 CHS. ON LINE.

S-14 CONTO

NOTE:

A SMALL PORTION OF THE SPRING IS ON ST. REGIS OWNERSHIP - @ 19.00 CHS. HIT SOUTHWEST CORNER OF SPRING - @ 19.00 CHS. CEASE SPRING.  
NEKCOGA HAD A GLAZED BLUE LINE THAT THEY USED FOR A CUTTING LINE FROM THE S 1/4 NORTH TO THE SWAMP TO FAR EAST. ALSO "NORTHWOODS SURVEYORS MINOCQUA" DID A ROUGH HAND COMPASS JOB FOR MERCURY PEOPLE. PAINT LINES ALL OVER BUT WE ARE THE ONLY ONES TO RUN THE NORTH LINE & THE NORTH SOUTH 1/4 LINE.

ABOVE, ALL THAT WAS NEEDED @ THIS TIME.

SECTION 2, TWP 37 N, R. 8 E.  
(S. 20-7)

RUNNING A TRANSVERSE RANDOM LINE FROM THE N.E. SECT. CORNER TO THE N.W. SECT. CORNER AS FOLLOWS:

0° WEST	30.606 CHAINS
N 83° 13' 10" W	2.80 "
N 44° 16' 00" W	2.164 "
N 88° 18' 00" W	38.66 "
S 69° 14' 50" W	1.487 "

CORRECT BEARING: N 83° 12' 33" W  
DISTANCE: 79.989 CHAINS

SET THE N 1/4 @ 39.994 CHAINS ON LINE.  
SET THE E 1/16 @ 19.997 " " "

RUNNING A TRANSVERSE RANDOM LINE FROM THE N 1/4 TO THE S 1/4, A CORNER OF AN OLD NORTH SOUTH & AN EAST WEST FENCE, AS FOLLOWS:

S 05° 33' 50" W	6.84 CHAINS
S 08° 48' 10" W	4.78 "
S 01° 43' 10" W	12.368 "

CONTO

SECTION 2, TWP. 37N., R. 8E.  
CONT'D.

S 19° 37' 00" E, ~ 6.535 CHAINS  
 S 15° 52' 10" E, ~ 11.767 "  
 S 0° 53' 50" W, ~ 35.885 "  
 N 59° 08' 33" W, ~ 5.15 "  
 N 56° 06' 40" W, ~ 9.665 "  
 S 87° 05' 50" W, ~ 1.656 "

CORRECT BRNG: S 09° 50' 40" W  
 CORRECT DISTANCE: 77.768 CHAINS

NO  
 RUNNING A TRAVERSE RANDOM LINE  
 FROM THE S<sup>1/4</sup> TO THE S.E. SECTION  
 CORNER AS FOLLOWS:

N 87° 05' 30" E ~ 1.656 CHAINS  
 S 86° 06' 40" E ~ 9.665 "  
 { S 89° 08' 33" E ~ 5.15 } "  
 { S 89° 08' 33" E ~ 2.885 } "  
 N 86° 35' 45" E ~ 2.39 "

CORRECT BRNG: S 88° 51' 30" E

" DISTANCE: 45.653 CHAINS

A TRAVERSE RANDOM LINE FROM THE  
 S<sup>1/4</sup> TO THE S.W. SECTION CORNER, BY OTHERS,  
 AS SHOWN BELOW:

S 81° 06' 00" W ~ 1.044 CHAINS  
 N 56° 53' 25" W ~ 2.138 "  
 N 56° 13' 25" W ~ 15.45 "  
 S 87° 25' 25" W ~ 11.352 "  
 S 49° 40' 40" W ~ 7.39 "  
 N 55° 22' 30" W ~ 4.408 "  
 N 48° 13' 00" W ~ 3.185 "

CORRECT BRNG: N 87° 05' 30" W

" DISTANCE: 40.726 CHAINS  
 FROM THE <sup>1/4</sup> NORTH LINE:

RUNNING ON COMPUTED BRNG S 07° 49' 31" W,  
 & PROPORTIONED AGAINST RECORD DISTANCE,  
 SET THE N.E. <sup>1/4</sup> @ 17.69 CHAINS ON LINE;  
 SET THE C.E. <sup>1/4</sup> @ 37.513 CHAINS; SET THE  
 S.E. <sup>1/4</sup> @ 57.34 CHAINS

SECTION 2, TWP. 37N., R. 8E.  
CONT'D.

RUNNING FROM THE N.E. <sup>1/4</sup> TH S 87° 48" W  
 FOR A DISTANCE OF 50.634 CHAINS, TO  
 THE N <sup>1/4</sup> EAST LINE

DEPARTURE NORTH: 3.9 FEET NORTH  
 CORRECT BRNG:  
 CORRECT DISTANCE:

RUNNING FROM THE C.E. <sup>1/4</sup> TH S 88° 17' 01" E,  
 FOR A DISTANCE OF 21.368 CHAINS, TO THE  
 E <sup>1/4</sup>:

DEPARTURE NORTH: 8 FEET  
 CORRECT BRNG:  
 " DISTANCE:

RUNNING FROM THE S.E. <sup>1/4</sup> TH S 88° 17' 01" E,  
 FOR A DISTANCE OF 22.103 CHAINS, TO  
 THE S <sup>1/4</sup> EAST LINE:

DEPARTURE SOUTH: 6 FEET  
 CORRECT BRNG:  
 " DISTANCE:

BEARING TREES:

N <sup>1/4</sup> - NORWAY PINE, 8"  
 N - 35° E, 0.613 CHAINS  
 E <sup>1/4</sup> - NORWAY PINE, 7"  
 S 16° E, 0.465 CHAINS  
 TH 35 - JACK PINE, 5"  
 E <sup>1/4</sup> - S 70° E, 0.53 CHAINS  
 E <sup>1/4</sup> - NORWAY PINE, 6"  
 N 62° W, 0.775 CHAINS  
 C.E. <sup>1/4</sup> - JACK PINE, 9"  
 S 80° W, 0.37 CHAINS  
 E <sup>1/4</sup> - JACK PINE, 6"  
 N 57° W, 0.68 CHAINS  
 N.E. <sup>1/4</sup> - NORWAY PINE, 14"  
 S 10° E, 0.54 CHAINS  
 E <sup>1/4</sup> - JACK PINE, S. 83° E, 1.03 CHS.



SECTION 17, TWP. 37N., R. 8E.,  
CONT'D.

ALL LINES PERTAINING TO ST. REGIS  
OWNERSHIP BLAZED & PAINTED.

SECTION 17, TWP. 36N., R. 10E.  
3-16<sup>TH</sup>-71

RUNNING A TRAVERSE RANDOM LINE  
FROM THE N<sup>1</sup>/<sub>4</sub>, BY OTHERS, TO THE S<sup>1</sup>/<sub>4</sub>  
BY CONSOLIDATED PAPER CO., AS SHOWN  
BELOW:

S 07° 34' 10" E	7.183 CHAINS
S 66° 31' 00" E	3.566 "
S 01° 34' 10" E	23.948 "
S 34° 47' 30" W	3.85 "
0 <sup>TH</sup> SOUTH	33.17 "
S 33° 50' 00" W	3.416 "
S 01° 50' 30" W	5.42 "

CORRECT BRNG: S 01° 36' 34" W  
" DISTANCE: 79.213 CHAINS

RUNNING A TRAVERSE RANDOM LINE FROM  
THE E<sup>1</sup>/<sub>4</sub> CORNER SET BY NERDOOSA EDWARDS  
PAPER CO., TO THE W<sup>1</sup>/<sub>4</sub> CORNER, SET BY OTHERS,  
AS SHOWN BELOW:

N 54° 35' 42" W	3.85 CHAINS
N 57° 10' 30" W	36.33 "
N 89° 11' 00" W	37.66 "
N 51° 33' 10" W	3.94 "

CORRECT BRNG: N 89° 37' 01" W  
" DISTANCE: 81.74 CHAINS

RUNNING FROM THE S<sup>1</sup>/<sub>4</sub>, A TRAVERSE RANDOM  
LINE TO THE S.W. SECTION CORNER AS FOLLOWS:

S 88° 07' 10" W	11.198 CHAINS
N 81° 30' 30" E	15.32 "
N 87° 13' 00" W	13.315 "
N 82° 15' 00" W	1.535 "

SET AT <sup>1</sup>/<sub>16</sub> ON LINE

SECTION 17, TWP. 37N., R. 8E.,  
CONT'D.

CORRECT BRNG: N 86° 31' 59" W  
" DISTANCE: 41.877 CHAINS  
RUNNING FROM THE S<sup>1</sup>/<sub>4</sub> TO THE S.E.  
SECTION CORNER, BY OTHERS, A TRAVERSE  
RANDOM LINE, AS SHOWN BELOW:

S 89° 19' 45" E	14.07 CHAINS
N 85° 14' 55" E	6.638 "
N 89° 04' 45" E	17.993 "
S 78° 11' 55" E	3.88 "

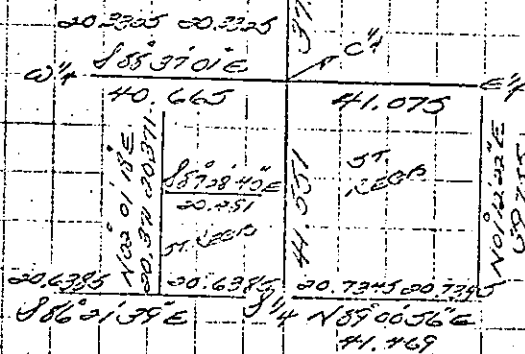
CORRECT BRNG: N 89° 00' 56" E  
" DISTANCE: 41.459 CHAINS

FOUND THE E<sup>1</sup>/<sub>16</sub> TO BE OUT OF ALIGNMENT -  
SET IT IN ITS PROPER POSITION.

SET THE C<sup>1</sup>/<sub>4</sub> @ THE INTERSECTION OF THE  
TWO TRUE CORRECT <sup>1</sup>/<sub>4</sub> LINES:

SET THE C.W. <sup>1</sup>/<sub>16</sub> N<sup>1</sup>/<sub>4</sub>  
IN ITS PROPER  
PLACE ON CORRECT  
LINE.

SET THE C.S. <sup>1</sup>/<sub>16</sub>  
IN ITS PROPER  
POSITION ON LINE.  
SEE NEXT PAGE.



RUNNING FROM THE S.E. SECTION CORNER  
TO THE E<sup>1</sup>/<sub>4</sub> AS SHOWN BELOW:

N 0° 31' 35" W	38.238 CHAINS
N 38° 13' 45" E	1.92 "

CORRECT BRNG: N 01° 14' 29" E  
" DISTANCE: 39.755 CHAINS

SECTION 77, TWP 37N., R. 8E  
CONT'D.

36 10-17

RUNNING FROM THE W<sup>1/2</sup> TH SOUTH LINE,  
ON A COMPASSED BRNG. & DISTANCE AS  
SHOWN BELOW:

N 02° 01' 18" E FOR A DISTANCE  
OF 30.371 CHAINS; SET THE

8 1/16  
S.W.

RUNNING FROM S<sup>1/16</sup> TH ON COMPASSED  
BRNG. & DISTANCE AS FOLLOWS:

S 87° 28' 40" E FOR A DISTANCE  
OF 30.481 CHAINS TO THE W<sup>1/2</sup> TH

DEPARTURE: NONE

ALL LINES PERTAINING TO ST. REGIS OWNER  
SHIP, BLAZED & PAINTED.

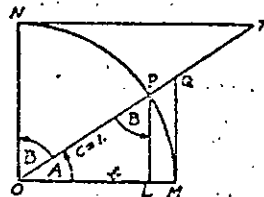


TABLE II

TRIGONOMETRIC FORMULAE

$$\angle A = \angle MOP \quad \angle B = \angle PON = \angle OPL$$

$$R = OB = c = 1$$

$$\sin A = \frac{a}{c} = \frac{a}{1} = a = \cos B = LP$$

$$\cos A = \frac{b}{c} = \frac{b}{1} = b = \sin B = OL$$

$$\tan A = \frac{a}{b} = \frac{MQ}{OM} = \frac{MQ}{1} = MQ = \cot B = MQ$$

$$\cot A = \frac{NT}{ON} = \frac{NT}{1} = NT = \tan B = NT$$

$$\csc A = \frac{OQ}{OM} = \frac{OQ}{1} = OQ = \csc B = OQ$$

$$\sec A = \frac{OT}{ON} = \frac{OT}{1} = OT = \sec B = OT$$

$$\text{vers } A = \frac{LM}{OP} = LM = \text{covers } B \neq$$

$$\text{covers } A = \frac{OP - LP}{OP} = OP - LP = \text{vers } B$$

$$\text{exsec } A = PQ = \text{coexsec } B$$

$$\text{coexsec } A = PT = \text{exsec } B$$

$$\sin \frac{1}{2}A = \sqrt{\frac{1 - \cos A}{2}} \quad \cos \frac{1}{2}A = \sqrt{\frac{1 + \cos A}{2}}$$

$$\sin 2A = 2 \sin A \cos A \quad \cos 2A = \cos^2 A - \sin^2 A$$

$$\text{Law of Sines} \quad \frac{\sin A}{a} = \frac{\sin B}{B} = \frac{\sin C}{C}$$

$$\text{Law of Cosines} \quad c^2 = a^2 + b^2 - 2ab \cos C$$

$$\text{Law of Tangents} \quad \frac{a+b}{a-b} = \frac{\tan \frac{1}{2}(A+B)}{\tan \frac{1}{2}(A-B)}$$

N  
P  
A

C