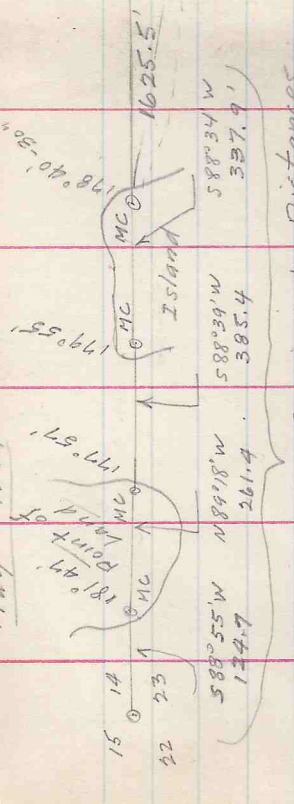
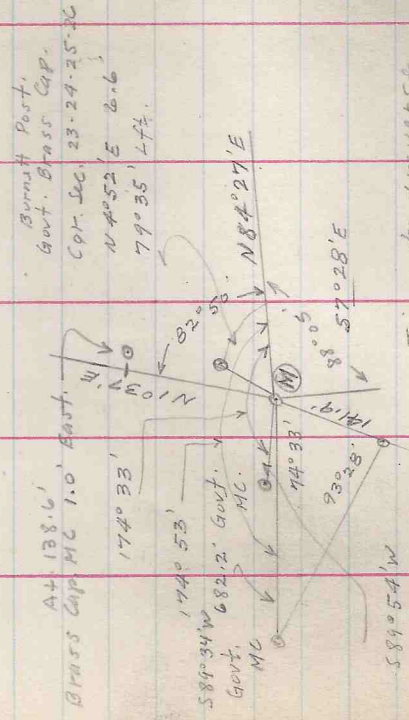


May - 1949

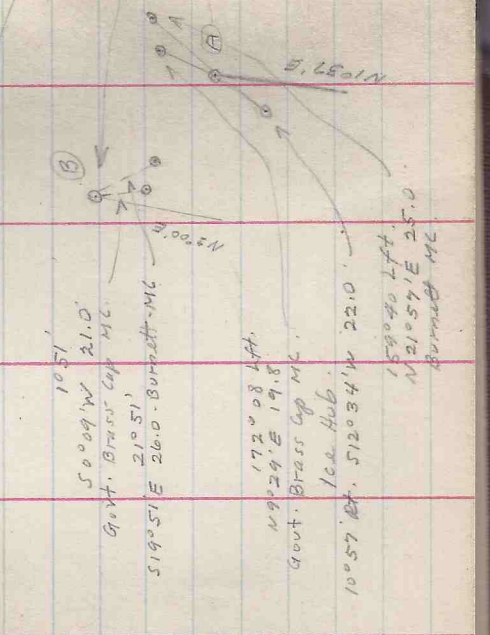


Govt. Resurvey Bearings & Distances
 Did not traverse north of East Island MC.



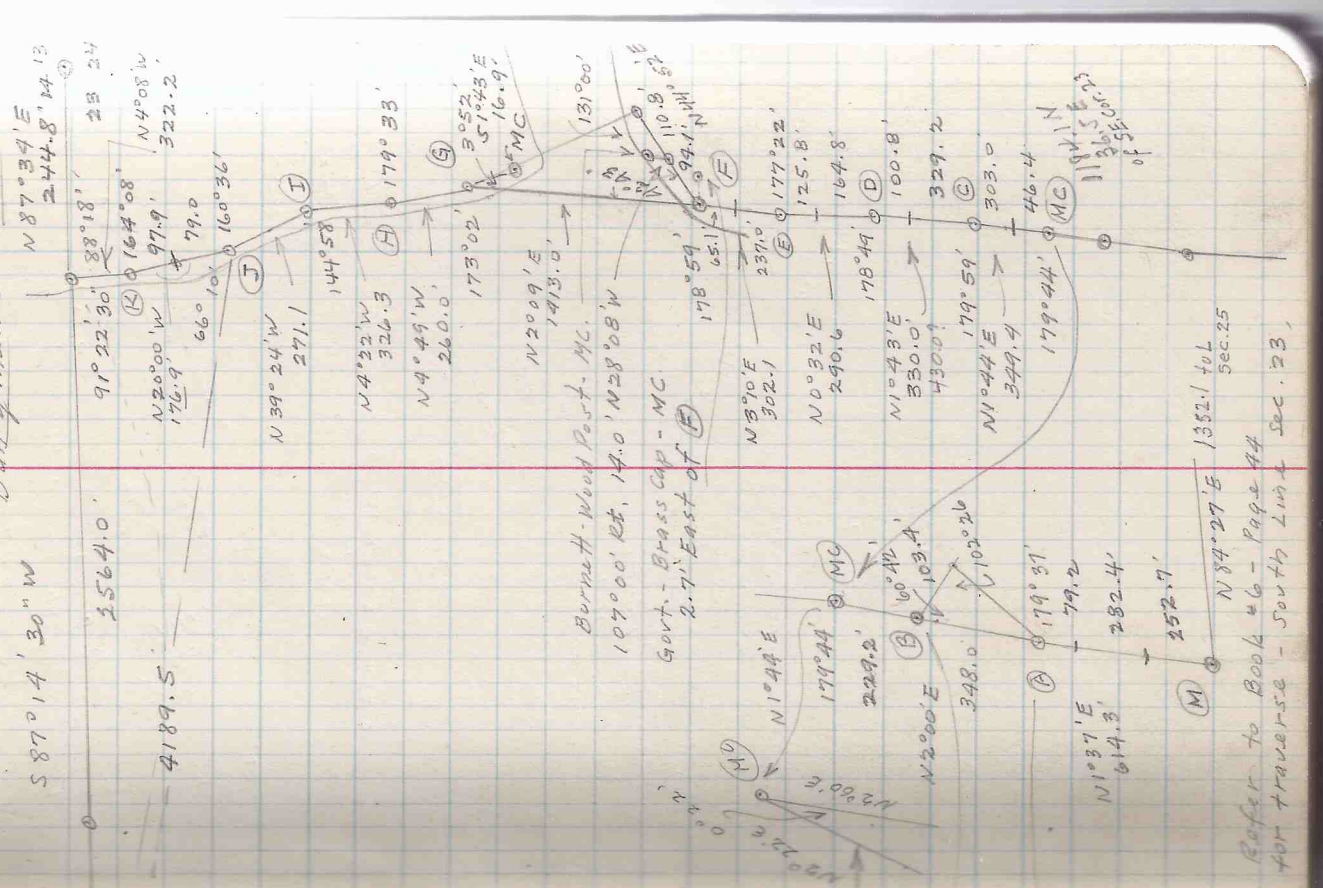
Burnett Post,
 Govt. Brass Cap.
 Cr. Sec. 23-24-25-26
 N4°52'E 6.6
 79°35' Lft.

Tie in to traverse
 thru Sec. 26
 Refer to Book 46 - Page 44



50°09'W 21.0'
 Govt. Brass Cap MC.
 21°51'
 519°51'E 260.0 - Burnett-MC
 172°08' Lft.
 19°24'E 19.8'
 Govt. Brass Cap MC
 Ice Hub.
 10°57' Lt. 512°34'W 22.0'
 159°40' Lft.
 21°57'E 25.0'
 Burnett MC

SEC. 23. T43N-R6E
 Dairy men's club

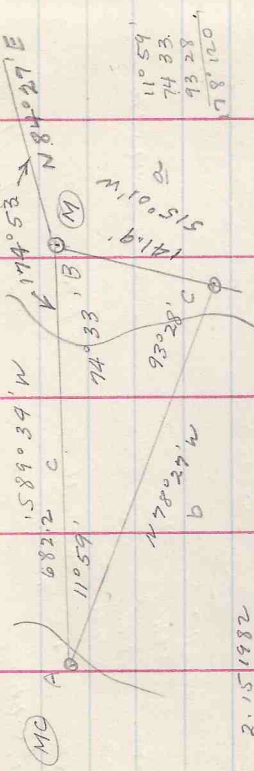


Refer to Book 46 - Page 44
 for traverse - South Line Sec. 23

SEC. 23, T43N-R6E
Dairyman's Club

May - 1949

TRI-NE BAY. LIT. CRAB LAKE

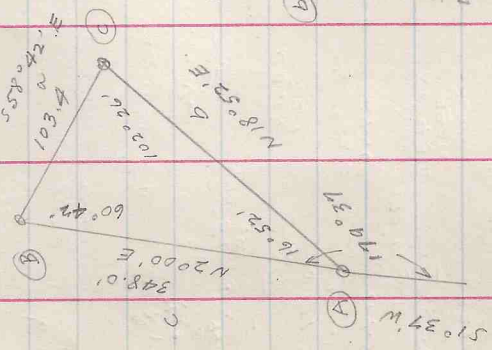


(MC) A
1589° 34' W
6822.2 C
11° 59'
74° 33'
93° 28'
141.9'
110.01' W
78° 27' W
11° 59'
74° 33'
93° 28'
178° 120'

2.15 1982
9.31 7284
2.83 4698
9.98 4615
12.818713 = 458.7

(B) 12.833903 = 682.2

TRI-HELL'S KITCHEN



(A) 51° 37' W
179° 37' E
16° 52' E
103° 26' E
85° 21' E
103° 26' E
55° 42' E
200° E
348° 0' E
102° 26' E
178° 120'

2.014521
9.962614
12.551905
9.989693
12.541548 = 348.0

(C) 2.551905
9.940551
12.492456 = 310.8

16° 52'
60° 42'
102° 26'
178° 120'

SEC 23, T 43N, R 6E
DeWymen's Club

May - 1949

TAV - EAST BAY CRAB LAKE

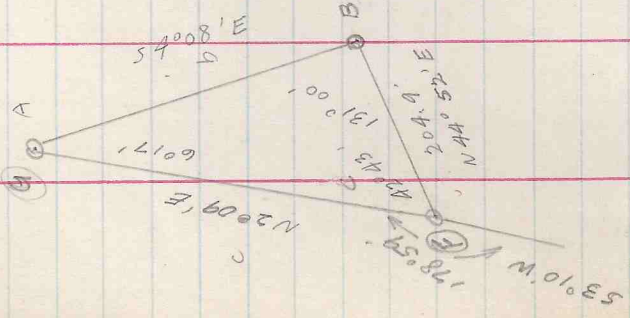
6° 17'
42' 43"
131' 00"
174° 60'

2.311542
9.039197
3.272345
9.877780

ⓐ 13.150125 = 1413.0'

3.272345
9.831469

ⓑ 13.103814 = 1270.0'



TRI - CRAB LAKE ISLAND

MC 4189.5 587° 14' 30" W

ⓐ 6° 35' 30"

2.694361
9.059913
3.634448
9.487710
ⓐ 13.622158 = 4189.5

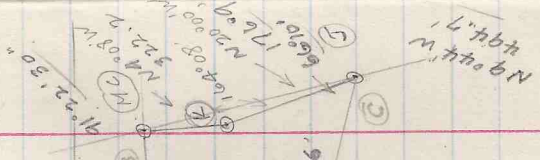
ⓑ N 82° 10' W

3.634448
9.996774

ⓑ 13.631222 = 4277.8

6° 35' 30"
91° 22' 30"
195° 52'

66' 10'
358' 19' 60"



5th Bearing Dist N Lst S E W N S CO-DEDS W