

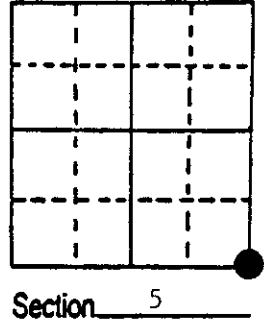
U.S. PUBLIC LAND SURVEY MONUMENT RECORD

Note: This form is intended and designed to fulfill all requirements of Wisconsin Administrative Code, Chapter A-E 7.08 U.S. Public Land Survey Monument Record (3) (a) (b) (c) (d) (e) (f) (g) (h) (i). An additional sheet may be added if necessary to conform with said requirements.

(a) Corner location: Township 35 North
 Range 9 East/West

Town/City/Village Enterprise

County Oneida



(b) (f) (g) (h) Description of monument found at this corner and if it was accepted, state all evidence (material, testimonial, occupational, plats, records, other monuments) used as a basis for accepting. If not accepted or if nothing was found, state evidence used as basis for establishing location. If reestablished through lost corner proportionate methods, indicate all monuments, distances and directions used to establish. Indicate type of monument found or set and sign post.

1863 - James Nowlin established this corner and set wood post with two BTs and two

Witness Trees:

16" Sugar, N40°W, 6 Links 20" Birch) No distance or bearing
 22" Birch, S17°E, 22 Links 12" Sugar) given

1932 H.C. Hall perpetuated this corner and set a 6" x 6" concrete monument.

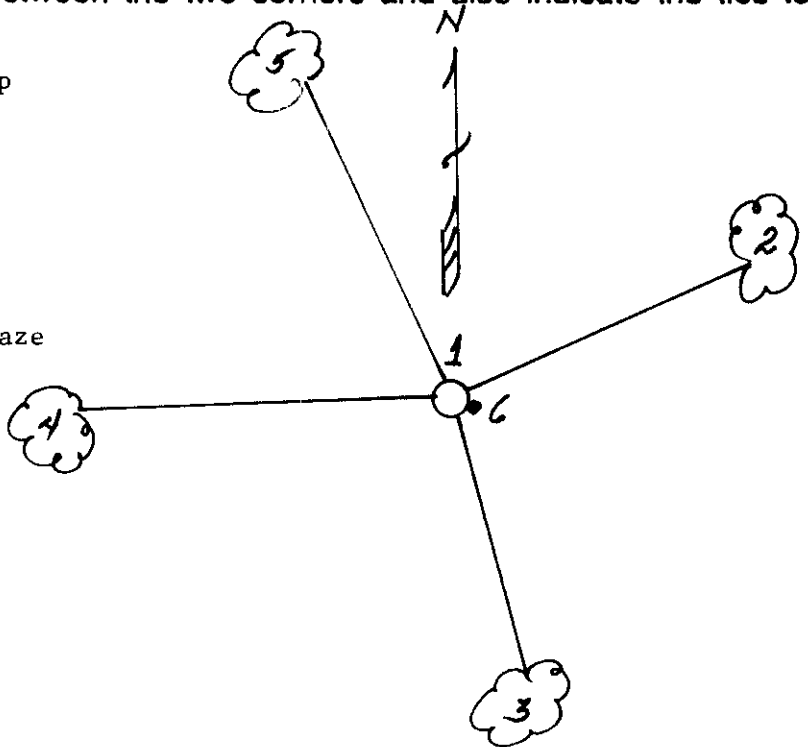
or 33--

11/4/89 - Milo E. Stefan found Hall's monument in good condition. No BTs or references found. Made new BTs and set plastic sign post.

(c) (d) (e) Plan view of corner with ties to at least 4 witness monuments. If in disagreement with previously established corner, show the distances between the two corners and also indicate the ties to the disputed corner.

- 1) 6" x 6" Concrete monument/brass cap
- 2) 5" Sugar Maple, N60°E, 17.06'
- 3) 6" Sugar Maple, S15°E, 37.40'
- 4) 9" Sugar Maple, S89°W, 29.78'
- 5) 9" Sugar Maple, N34°W, 54.93'
- 6) Plastic sign post next to monument

Distances to nail in side of tree
 BTs scribed with "BT" in stump blaze



(i) I, Milo E. Stefan
 (type or print name) certify that the corner location on this record was determined by me or under my direction and control and that this U.S. Public Land Survey Monument Record is correct and complete to the best of my knowledge and belief.

Milo E. Stefan 11/5/89
 Signature Date



35 2900 000

U.S. PUBLIC LAND SURVEY MONUMENT RECORD

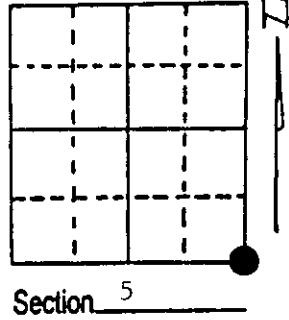
Note: This form is intended and designed to fulfill all requirements of Wisconsin Administrative Code, Chapter A-E 7.08 U.S. Public Land Survey Monument Record (3) (a) (b) (c) (d) (e) (f) (g) (h) (i). An additional sheet may be added if necessary to conform with said requirements.

(a) Corner location: Township 35 North

Range 9 East/West

Town/City/Village Enterprise

County Oneida



(b) (f) (g) (h) Description of monument found at this corner and if it was accepted, state all evidence (material, testimonial, occupational, plats, records, other monuments) used as a basis for accepting. If not accepted or if nothing was found, state evidence used as basis for establishing location. If reestablished through lost corner proportionate methods, indicate all monuments, distances and directions used to establish. Indicate type of monument found or set and sign post.

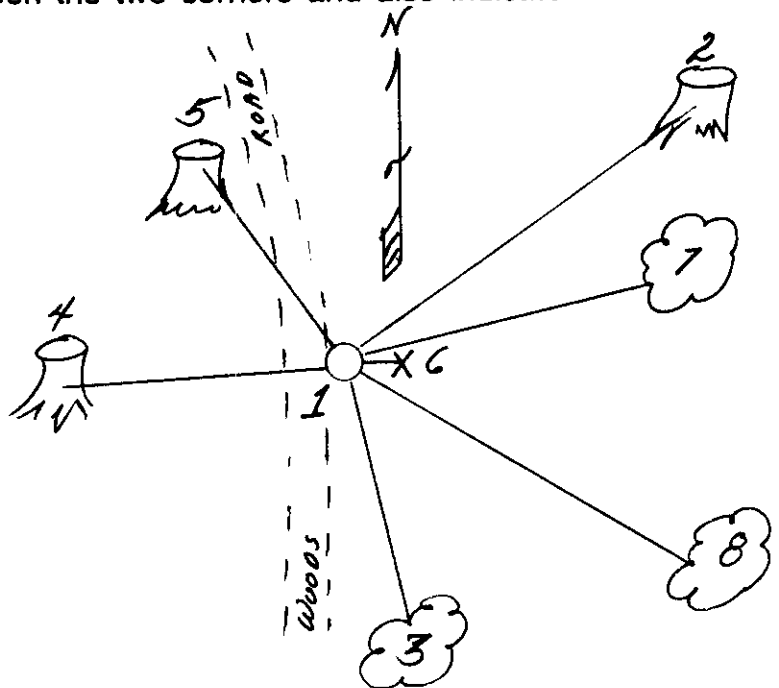
- 1863 - James Nowlin established this corner and set wood post with two BTs and two Witness Trees:
- | | |
|----------------------------|----------------------------|
| 16" Sugar, N40°W, 6 Links | 20" Birch) No distance or |
| 22" Birch, S17°E, 22 Links | 12" Sugar) bearing given |
- 1932 or 1933 - H. C. Hall perpetuated this corner and set a 6" x 6" concrete monument.
- 11/4/1989 - Milo E. Stefan found Hall's monument in good condition. No BTs or references found. Made new BTs and set plastic sign post.
- 10/9/1991 - Milo E. Stefan found 3 BTs recently cut by County Timber Harvest - was instructed by County Surveyor to restore corner and prepare new certificate.

(c) (d) (e) Plan view of corner with ties to at least 4 witness monuments. If in disagreement with previously established corner, show the distances between the two corners and also indicate the ties to the disputed corner.

- 1) 6" x 6" concrete monument/brass cap.
- 2) 5" Sugar Maple stump, N60°E, 17.06'.
- 3) 6" Sugar Maple, S15°E, 37.40'.
- 4) 9" Sugar Maple stump, S89°W, 29.78'.
- 5) 9" Sugar Maple stump, N34°W, 54.93'.
- 6) Plastic sign post next to monument.

Distances to nail in side of tree.
"BT" scribed in stump blaze.

- 7) 5" Sugar Maple, N84°E, 19.60'.
- 8) 6" Sugar Maple, S63°E, 49.97'.



(i) I, Milo E. Stefan
(type or print name) certify that the corner location on this record was determined by me or under my direction and control and that this U.S. Public Land Survey Monument Record is correct and complete to the best of my knowledge and belief.

Milo E. Stefan
Signature

October 14, 1991
Date



Stamp

Index No. E-9

U.S. PUBLIC LAND SURVEY MONUMENT RECORD

Note: This form is intended and designed to fulfill all requirements of Wisconsin Administrative Code, Chapter A-E 7.08 U.S. Public Land Survey Monument Record (3) (a)(b)(c)(d)(e)(f)(g)(h)(i). An additional sheet may be added if necessary to confirm with said requirements.

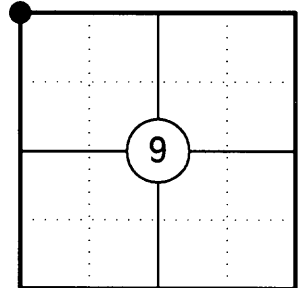
(a) Corner Location:

Northwest Corner Section 9
 Township 35 North
 Range 9 East
 Town of Enterprise
 County of Oneida

Oneida County ID No.: 3509050000

Oneida County Coordinates (NAD 83/2011):

N= 129382.61
 E= 270899.40



(b) History of Original Corner:

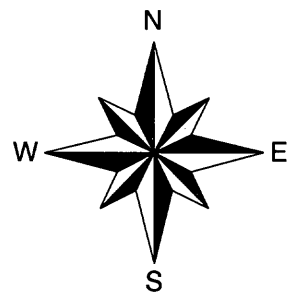
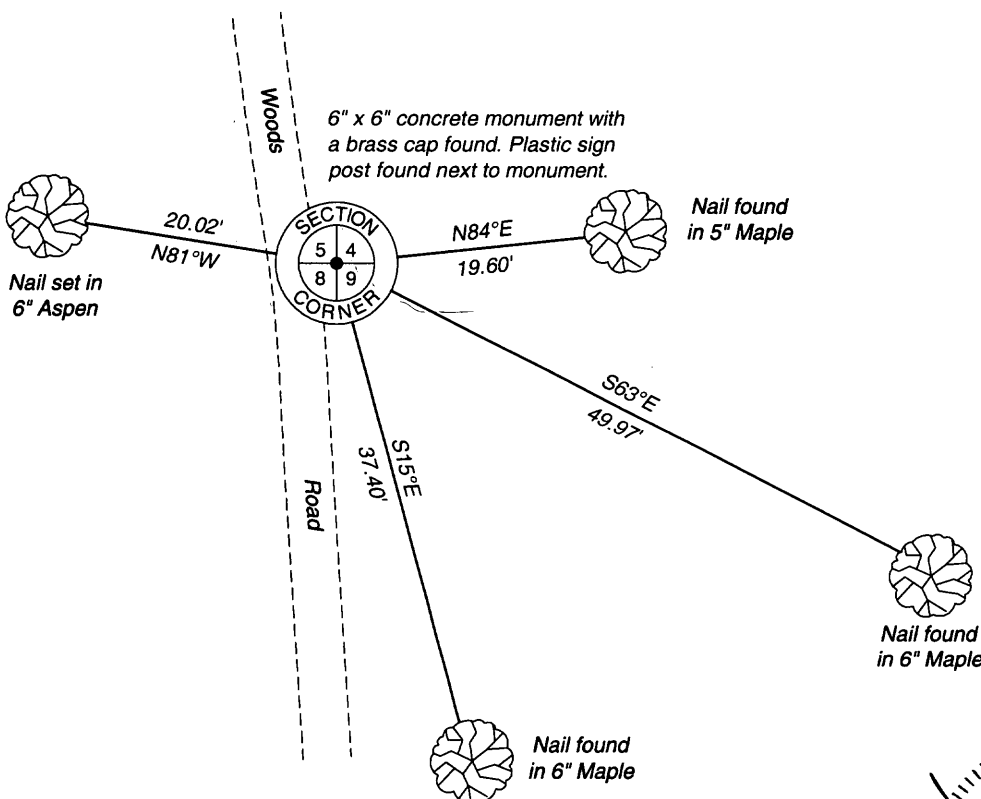
Original Surveyor: James L. Nowlin
 Date of Survey: October/November 1864

Original Bearing Trees: 16" Sugar - N40°W, 6 Links
 22" Birch - S17°E, 22 Links
 20" Birch - No Bearing or distance
 12" Sugar - No Bearing or distance

(f)(g)(h) Description of monument found at this corner and if it was accepted, state all evidence (material, testimonial, occupational, plats, records, other monuments) used as a basis for establishing location. If reestablishing through lost corner proportionate methods, indicate all monuments, distances, and directions used to establish. Indicate type of monument and sign post found or set.

- 1864: James L. Nowlin set the original Section Corner post
- 1932/1933: H.C. Hall perpetuated this corner and set a 6" x 6" concrete monument.
- 11/04/1989: Milo E. Stefan found Hall's monument in good condition. No bearing trees or references found. He made new bearing trees and set plastic sign post.
- 10/09/1991: Milo E. Stefan found 3 BT's recently cut by county timber harvest. He was instructed by County Surveyor to restore corner and prepare new certificate.
- 11/14/2014: I found and accepted a 6" x 6" concrete monument with a brass cap along with 3 bearing trees. I made one additional bearing tree to witness the corner.

(c)(d)(e) Plan view of corner with ties to at least four witnesses. If in disagreement with previously established corner, show the distances between the two corners and also indicate the tie to the disputed corner.

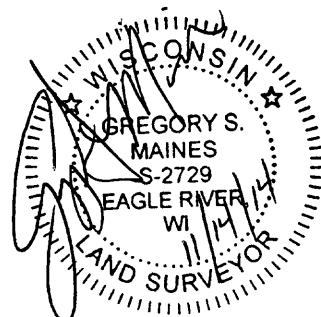


Sketch is not to scale
 Distances to nail in side of tree.

REGISTER OF DEEDS OFFICE
 ONEIDA COUNTY
 FILED

JAN 07 2015

AT _____ O'CLOCK _____ M
 KYLE J. FRANSON
 REGISTER OF DEEDS



Certification

I, Gregory S. Maines, Professional Land Surveyor No. 2729, hereby certify that the corner location on this record was referenced by me or under my direction and control and that this U.S. Public Land Survey Monument Record is complete to the best of my knowledge and belief.

3509050000

Index No. E-9