

U.S. PUBLIC LAND SURVEY MONUMENT RECORD

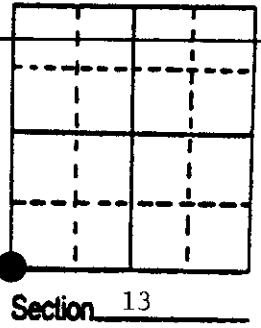
Note: This form is intended and designed to fulfill all requirements of Wisconsin Administrative Code, Chapter A-E 7.08 U.S. Public Land Survey Monument Record (3) (a) (b) (c) (d) (e) (f) (g) (h) (i). An additional sheet may be added if necessary to conform with said requirements.

(a) Corner location: Township 35 North

Range 9 East/West

Town/City/Village Enterprise

County Oneida



(b) (f) (g) (h) Description of monument found at this corner and if it was accepted, state all evidence (material, testimonial, occupational, plats, records, other monuments) used as a basis for accepting. If not accepted or if nothing was found, state evidence used as basis for establishing location. If reestablished through lost corner proportionate methods, indicate all monuments, distances and directions used to establish. Indicate type of monument found or set and sign post.

1864 - James Nowlin established this corner and set wood post with two BTs and two witness trees:

- 12" Tamarack, S77°E, 12 Links 10" Tamarack, N5°W, 16 Links
- 7" Tamarack 9" Tamarack

1932 or 33 - Hall found old post and both BTs broken off. Scribing plain on north one. He made two new references:

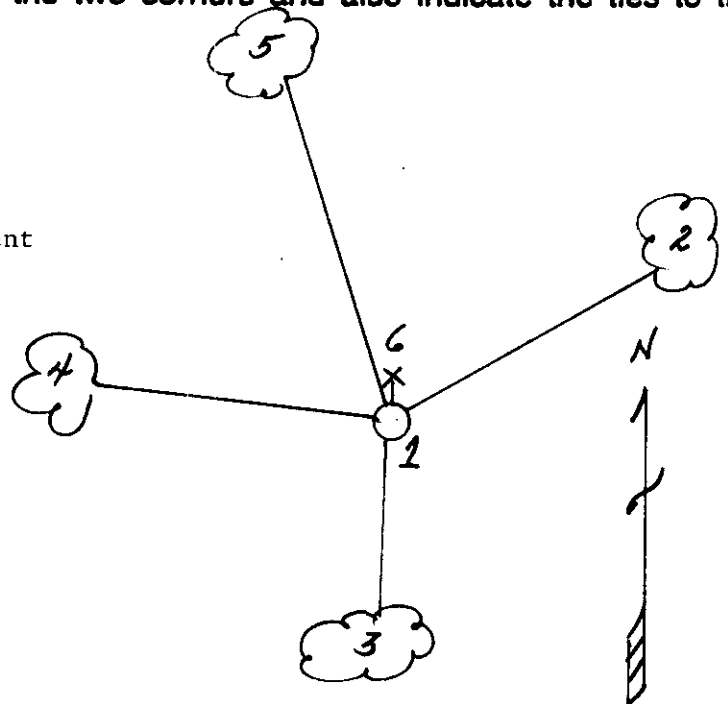
- 9" Cedar Stub, S44°E, 56 1/4 Links, 9" Cedar Stub, N87°W, 51.8 Links

11/16/1989 - Milo E. Stefan found Hall's monument in good condition. All BTs nearly gone. We made four new BTs and set plastic sign post.

(c) (d) (e) Plan view of corner with ties to at least 4 witness monuments. If in disagreement with previously established corner, show the distances between the two corners and also indicate the ties to the disputed corner.

- 1) 6" x 6" x 30" concrete monument
- 2) 6" Black Spruce, N56°E, 20.88'
- 3) 9" White Birch, S2°W, 6.22'
- 4) 8" Black Spruce, N78°W, 20.82'
- 5) 8" White Spruce, N8°W, 32.58'
- 6) Plastic sign post on north side of monument

Distances to nail in side of BTs.



(i) I, Milo E. Stefan
 (type or print name) certify that the corner location on this record was determined by me or under my direction and control and that this U.S. Public Land Survey Monument Record is correct and complete to the best of my knowledge and belief.

Milo E. Stefan
 Signature

11/25/1989
 Date



Index No. N-21

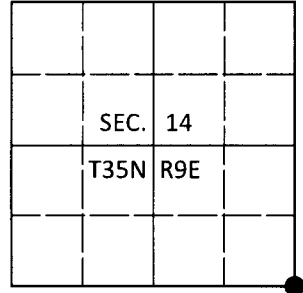
35-0114-200

U.S. PUBLIC LAND SURVEY MONUMENT RECORD

Note: This form is intended and designed to fulfill all requirements of Wisconsin Administrative Code, Chapter A-E 7.08 U.S. Public Land Survey Monument Record (3)(a-i).

(a) CORNER LOCATION
 Cor. of Secs. 13, 14, 23 & 24
 Township 35 North
 Range 9 East of the 4th P.M.
 Town of Enterprise
 County of Oneida

WISCRS - Oneida County
 N: 119,091.76 USft
 E: 286,951.19 USft
 Datum: NAD 83(2011)
 GNSS Method: RTN - Direct
 GNSS Control: WISCRS VRS



(b) HISTORY OF ORIGINAL CORNER ESTABLISHMENT

Original Surveyor:

Original Accessories:

Date of Survey Commenced:
 Completed:

See previous USPLS Monument Record

(b)(f)(g)(h) Description of monument found at this corner and if it was accepted, state all evidence (material, testimonial, occupational, plats, records, other monuments) used as a basis for accepting. If not accepted or if nothing was found, state evidence used as basis for establishing location. If re-established through lost corner proportionate methods, indicate all monuments, distances and directions used to establish. Indicate type of monument and sign post found or set.

This is a perpetuation of a previous USPLS Monument Record by Milo E. Stefan, RLS dated Nov. 25, 1989 and filed in the office of the Oneida County Register of Deeds. A complete history of the corner can be found on the previous monument record. I accept the previous location as a true and faithful perpetuation or reestablishment of the original corner location and further perpetuate it as follows.

Sep. 22, 2018: I found and accepted the record monument, a 6" sq. concrete monument with a 3-1/2" diam. Oneida Co. brass tablet projecting 20" above the ground surface. The monument is in only fair condition and starting to crumble. The record bearing tree at N78°W is now a stump. I found or established accessories as shown below. I found a white vinyl sign post bearing East, 1.7 ft.

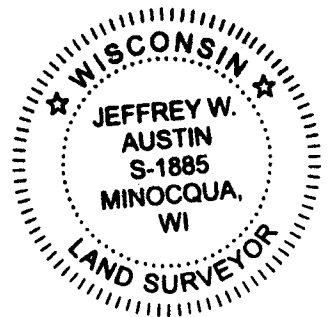
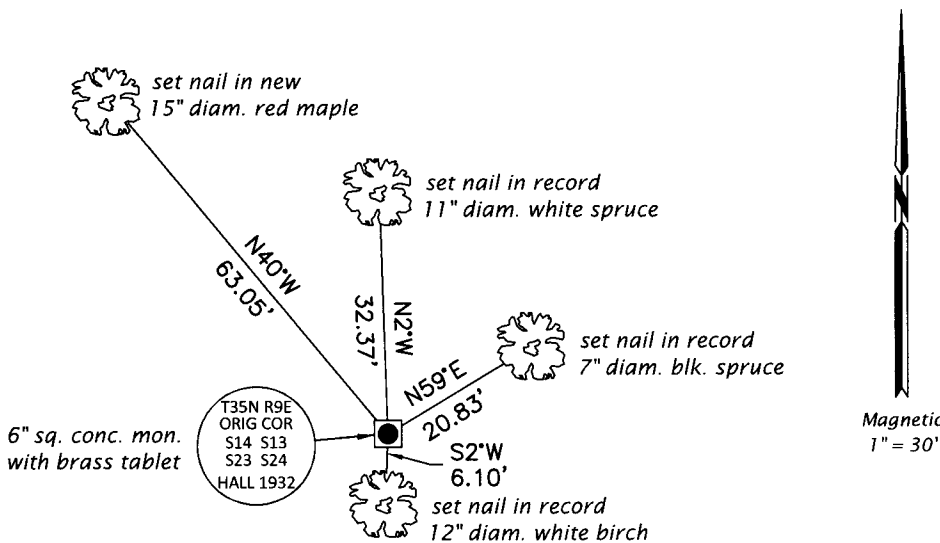
The coordinate value shown has been verified by at least one of the following methods: 1) comparison to a previously GPS determined published value; 2) the value is the average of two or more GPS observations at a markedly different time; 3) one or more distances were measured back to the GPS observed corner from temporary GPS observed offset locations.

REGISTER OF DEEDS OFFICE
 ONEIDA COUNTY
 FILED

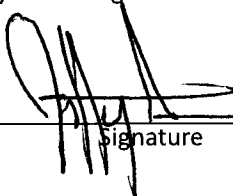
DEC 31 2018

KYLE J. FRANSON
 REGISTER OF DEEDS

(c)(d)(e) Plan view of corner with ties to at least 4 witness monuments. If in disagreement with previously established corner, show the distances between the two corners and also indicate the ties to the disputed.



(i) I, Jeffrey W. Austin, Professional Land Surveyor No. S-1885, hereby certify that the corner location on this record was determined by me or under my direction and control and that this U.S. Public Land Survey Monument Record is correct and complete to the best of my knowledge and belief.


 Signature

13 DEC 2018
 Date