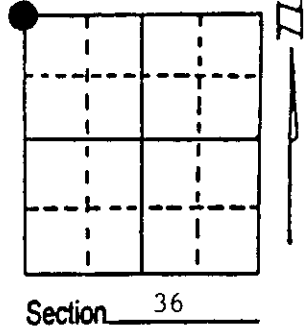


U.S. PUBLIC LAND SURVEY MONUMENT RECORD

Note: This form is intended and designed to fulfill all requirements of Wisconsin Administrative Code, Chapter A-E 7.08 U.S. Public Land Survey Monument Record (3) (a) (b) (c) (d) (e) (f) (g) (h) (i). An additional sheet may be added if necessary to conform with said requirements.

(a) Corner location: Township 35 North
 Range 9 East/~~West~~

Town/City/Village Enterprise
 County Oneida



(b) (f) (g) (h) Description of monument found at this corner and if it was accepted, state all evidence (material, testimonial, occupational, plats, records, other monuments) used as a basis for accepting. If not accepted or if nothing was found, state evidence used as basis for establishing location. If reestablished through lost corner proportionate methods, indicate all monuments, distances and directions used to establish. Indicate type of monument found or set and sign post.

1864 - James Nowlin established this corner and set a wood post with two BTs and two Witness Trees:

- | | |
|-------------------------|-----------------------------|
| 6" Pine, N77°E, 7 Links | 6" Tamarack, N22°W, 8 Links |
| 6" Tamarack, illegible | 10" Tamarack, illegible |

7/20/1935 - Maine found original Pine BT grubbed out of road and set off-set stake north, 32 links. Corner in center of road. Peak of grey boulder, called at N70°E, 1.11 chains.

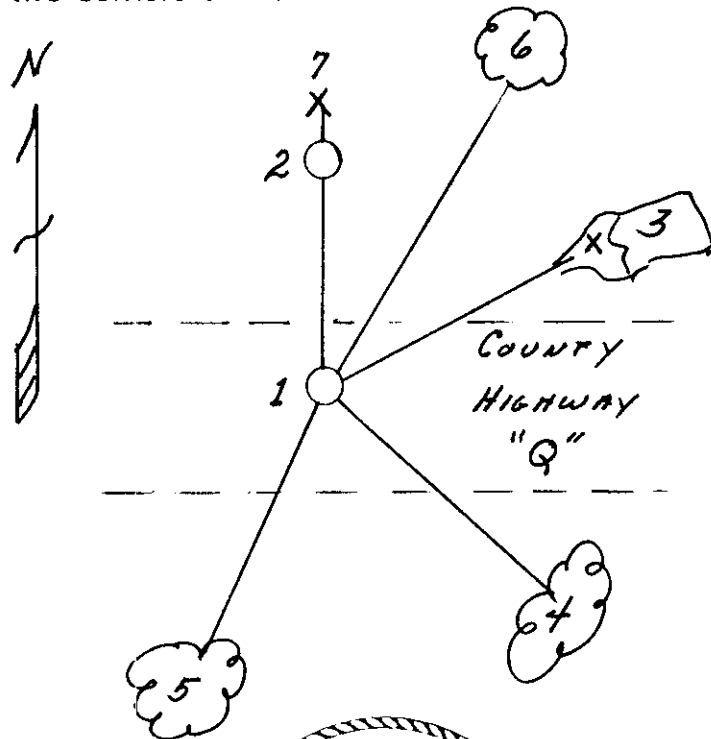
11/23/1990 - Milo E. Stefan found PK nail in surface of County Highway "Q" with photography target. 2" x 60" iron pipe with brass cap north, 29.54'. Grey boulder N64°E, 70.25'. Two location poster posts down next to iron pipe. We made four new BTs and set plastic sign post, with railroad spike in place of PK nail.

10/11/1991 - Milo E. Stefan measured distance from Quarter Corner Westerly through East Sixteenth (by Maine) and found Section Corner in correct position.

(c) (d) (e) Plan view of corner with ties to at least 4 witness monuments. If in disagreement with previously established corner, show the distances between the two corners and also indicate the ties to the disputed corner.

- 1) Railroad spike in highway surface.
- 2) 2" x 60" iron pipe/brass cap (W.C.) North, 29.54'.
- 3) "X" on 3' x 4' x 6" grey boulder, N64°E, 70.25'.
- 4) 8" Red Maple, S70°E, 72.27'.
- 5) 12" Tamarack, S12°W, 113.18'.
- 6) 12" White Spruce, N34°E, 86.02'.
- 7) Plastic sign post next to W.C.

Distances to nail on side of BTs.
 Stump blaze scribed "BT".



(i) I, Milo E. Stefan
 (type or print name) certify that the corner location on this record was determined by me or under my direction and control and that this U.S. Public Land Survey Monument Record is correct and complete to the best of my knowledge and belief.

Milo E. Stefan Signature October 14, 1991 Date



Stamp

Index No. V-21

3509260000

MAR 3 2003

Recorders Data

This form is intended to fulfill the requirements of Chapter A-E 7.08 (3)(a) thru (i) U.S. Public Land Survey Monument Location Record, Wisconsin Administrative Code. Use the reverse side of form for continuation.

U.S. PUBLIC LAND SURVEY MONUMENT LOCATION RECORD

USPLS CORNER: NW SECTION CORNER SECTION: 36 TOWNSHIP: 35 NORTH RANGE: 9 EAST

NAME OF WATERWAY FOR M.C. CORNER : N/A SECTION LINE: N/A

(CITY)(VILLAGE)(TOWN) OF: ENTERPRISE COUNTY OF: ONEIDA

Description of monument found or placed and all other evidence used as the basis for monument location; including monuments and related measurements required if the corner location was reestablished by lost corner proportionate methods. Also indicate name of original surveyor, original survey date and the corner monument, bearing trees, witness or other reference monuments established; including measured bearing and distance ties, from available records.

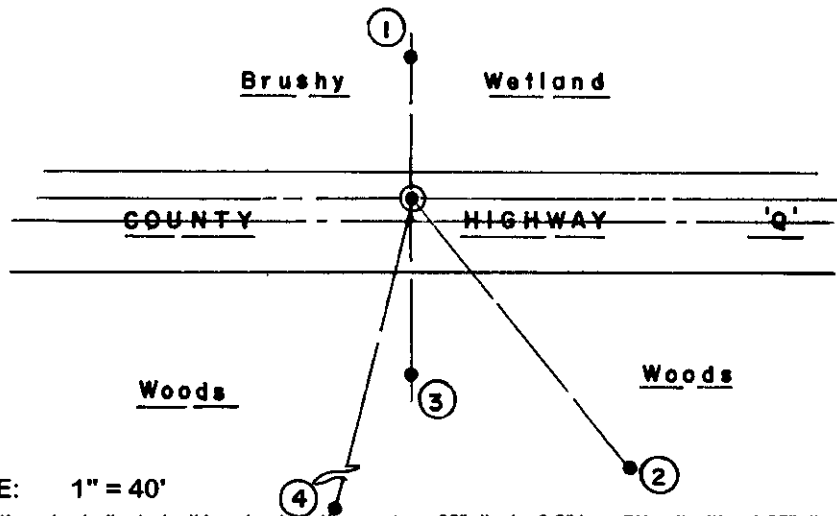
THIS CORNER WAS RE-REFERENCED WITH PRIOR VERBAL APPROVAL BY ONEIDA COUNTY SURVEYOR MICHAEL ROMPORTL AS REMAINING RECORD REFERENCES ARE INADEQUATE FOR FUTURE RECOVERY PURPOSES.

This corner was last referenced by Milo E. Stefan/RLS 1558 per U.S. Public Land Survey Monument Location Record dated October 14, 1991 as filed in Oneida County records, which should be referred to for historical documentation.

Using two(2) remaining record reference ties, I substantiated the corner location on a PK nail found in existing blacktop pavement. I pulled the 1/4" dia. by 1.25" long PK nail but detected no positive MLR below roadway for probable RR spike noted as set in place of a PK nail at the corner by Stefan in 1991. I reset corner location found with a 1/2" dia. by 4.5" long tapered stainless steel pin with geared top flush in 22' wide road mat, which falls about 3.4' North of pavement centerline, and painted a blaze orange cross and SC onto blacktop at pin set. I also found older 2" dia. brass capped iron pipe per record and tipped 15° West, which I did not replumb as it was very stable in a cairn of large rocks at grade and as the record tie distance of 29.54' checked OK to corner pin in roadway, Stefans SW Tam BT not used as it falls within a large and entangled blowdown and his NE white spruce BT blazes were grown shut. His SE Mr BT tie distance checked to corner location but record bearing of S70°E considered in error as now reads S40°E to the BT found with upper blaze scar and lower blaze open with scribing and 40d nail in right face 4' above grade. I also could not detect an 'X' on grey boulder he had noted NE of the corner. A standard white poly 'T' marker post also found on North side of brass capped reference monument North of corner and an old rotted squared wood post with marker tag flat on grade nearby.

This recovery completed September 10, 2002; there were no direct witnesses other than vehicle drive-bys.

Plan view map of monument location with bearing and distance ties to a minimum of four(4) described witness or reference monuments of concrete, natural stone, iron, live bearing trees or equivalent material. If applicable, also show a minimum of two(2) bearing and distance ties to any other monument found and not accepted; including the bearing and distance from the accepted monument.



WITNESS MONUMENT TIES:

- ① 5/8" dia. by 24" long rebar set with yellow poly RM cap 4" up North 29.49'.
- ② Old 10" Mr BT with upper blaze shut/lower blaze open with scribing and 40d nail in right face 4' above grade; S40°E 72.10' to my PK/W in right face.
- ③ 5/8" dia. by 24" long rebar set with yellow poly RM cap 3" up South 36.88'.
- ④ New 10" Tam BT S14°W 92.44'.

No other suitable BTs within 100 feet on either side of roadway due to the existing wetland conditions.

SCALE: 1" = 40'

Unless otherwise indicated, all bearing tree ties are to a .25" dia. by 2.5" long PK nail with a 1.25" dia. steel washer driven into unblazed right face and a .25" dia. by 2.5" long PK nail with a 2" dia. steel washer stamped BT is also driven into unblazed face of bearing tree at DBH; the basis for measured bearings is by compass to nearest degree and all tie distances are measured horizontal by steel tape corrected to nearest 1/100th feet at standard temperature of 68° F.

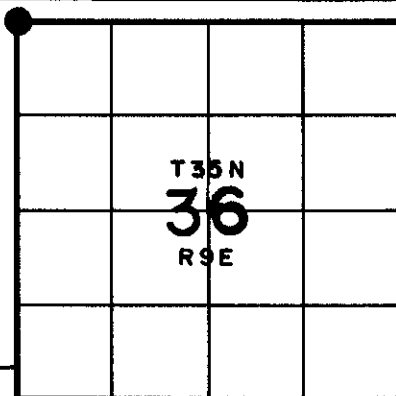
RLS SEAL:



LAND SURVEYOR CERTIFICATE:

I, William C. Rohde, hereby certify that I am duly licensed as a Professional Land Surveyor in the State of Wisconsin; that this USPLS monument location was determined by me and/or under my direct supervision and control; and that this U.S. Public Land Survey Monument Location Record is true and correct to the best of my knowledge and belief.

Signed: *William C. Rohde*
William C. Rohde RLS 841



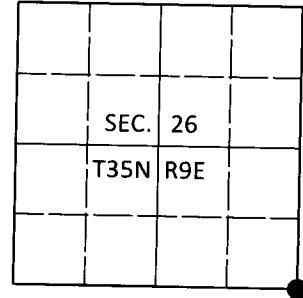
3509260000

U.S. PUBLIC LAND SURVEY MONUMENT RECORD

Note: This form is intended and designed to fulfill all requirements of Wisconsin Administrative Code, Chapter A-E 7.08 U.S. Public Land Survey Monument Record (3)(a-i).

(a) CORNER LOCATION
 Cor. of Secs. 25, 26, 35 & 36
 Township 35 North
 Range 9 East of the 4th P.M.
 Town of Enterprise
 County of Oneida

WISCRS - Oneida County
 N: 108,861.38 USft
 E: 286,745.07 USft
 Datum: NAD 83(2011)
 GNSS Method: RTN - Direct
 GNSS Control: WISCORS VRS



(b) HISTORY OF ORIGINAL CORNER ESTABLISHMENT

Original Surveyor: _____ Original Accessories: _____
 Date of Survey Commenced: _____ See previous monument record(s)
 Completed: _____

(b)(f)(g)(h) Description of monument found at this corner and if it was accepted, state all evidence (material, testimonial, occupational, plats, records, other monuments) used as a basis for accepting. If not accepted or if nothing was found, state evidence used as basis for establishing location. If re-established through lost corner proportionate methods, indicate all monuments, distances and directions used to establish. Indicate type of monument and sign post found or set.

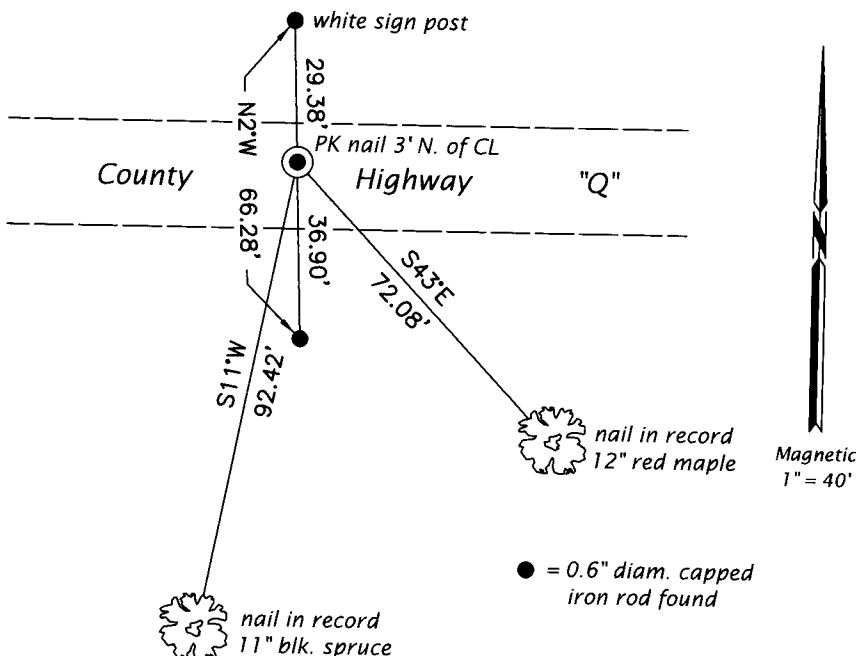
This is a perpetuation of the following monument record(s) that comprise a complete history of the corner:

Mar. 1, 2003: USPLS Monument Record No. 3509260000 by William C. Rohde, PLS

July 21, 2019: I found and accepted a perpetuation of the record monument, a PK nail 3 ft. North of the road centerline. I found or established accessories as shown below.

The coordinate value shown has been verified by at least one of the following methods: 1) comparison to a previously GPS determined published value; 2) the value is the average of two or more GPS observations at a markedly different time; 3) one or more distances were measured back to the GPS observed corner from temporary GPS observed offset locations.

(c)(d)(e) Plan view of corner with ties to at least 4 witness monuments. If in disagreement with previously established corner, show the distances between the two corners and also indicate the ties to the disputed.

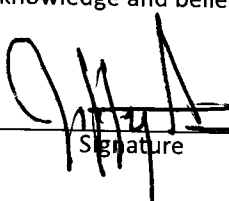


REGISTER OF DEEDS OFFICE
 ONEIDA COUNTY
 FILED

JAN 03 2020

KYLE J. FRANSON
 REGISTER OF DEEDS

(i) I, Jeffrey W. Austin, Professional Land Surveyor No. S-1885, hereby certify that the corner location on this record was determined by me or under my direction and control and that this U.S. Public Land Survey Monument Record is correct and complete to the best of my knowledge and belief.


 Signature _____ Date DEC 23, 2019