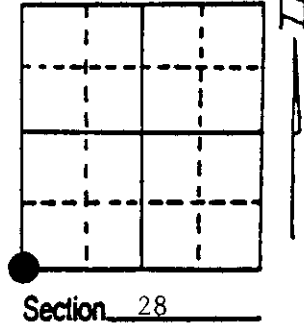


U.S. PUBLIC LAND SURVEY MONUMENT RECORD

Note: This form is intended and designed to fulfill all requirements of Wisconsin Administrative Code, Chapter A-E 7.08 U.S. Public Land Survey Monument Record (3) (a) (b) (c) (d) (e) (f) (g) (h) (i). An additional sheet may be added if necessary to conform with said requirements.

(a) Corner location: Township 35 North
 Range 9 East/West

Town/City/Village Enterprise
 County Oneida



(b) (f) (g) (h) Description of monument found at this corner and if it was accepted, state all evidence (material, testimonial, occupational, plats, records, other monuments) used as a basis for accepting. If not accepted or if nothing was found, state evidence used as basis for establishing location. If reestablished through lost corner proportionate methods, indicate all monuments, distances and directions used to establish. Indicate type of monument found or set and sign post.

1864 - James Nowlin established this corner and set a wood post with two BTs and two Witness Trees:
 12" Sugar Maple, N47°E, 12 Links 10" Lynn
 15" Sugar Maple, S47°W, 25 Links 16" Sugar

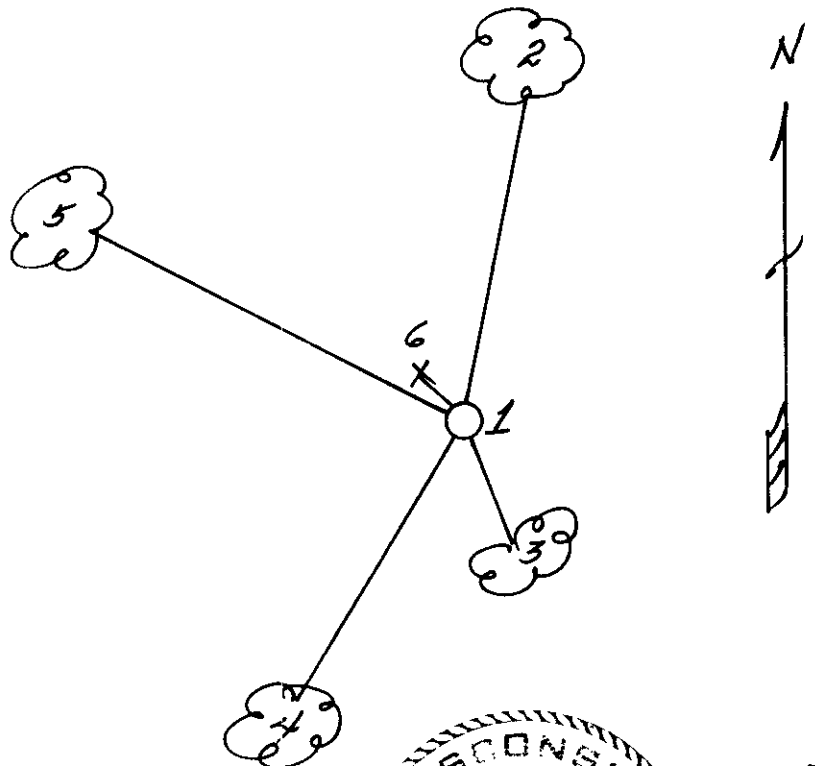
7/15/1936 - Maine found remains of three original BTs and set a 2 1/4" x 60" iron pipe/brass cap and made three new BTs:
 12" Sugar Maple, S84 1/2°W, 59 Links 12" Hemlock, N6°E, 63 1/2 Links
 24" Sugar Maple, S14 1/4°E, 33 1/2 Links

12/15/1989 - Milo E. Stefan found Maine's monument and Hemlock BT in good condition, other BTs gone. We made three new BTs and set plastic sign post.

(c) (d) (e) Plan view of corner with ties to at least 4 witness monuments. If in disagreement with previously established corner, show the distances between the two corners and also indicate the ties to the disputed corner.

- 1) 2 1/4" x 60" iron pipe/brass cap
- 2) 14" Hemlock, N6°E, 42.10' (Maines)
- 3) 6" Red Oak, S14°E, 3.92'
- 4) 14" Sugar Maple, S34°W, 20.18'
- 5) 5" Red Oak, N56°W, 24.85'
- 6) Plastic sign post, northwest, 1.1'

Distances to nail in side of BTs.
 Stump blazes scribed "BT".



(i) I, Milo E. Stefan
 (type or print name) certify that the corner location on this record was determined by me or under my direction and control and that this U.S. Public Land Survey Monument Record is correct and complete to the best of my knowledge and belief.

Milo E. Stefan 12/16/89
 Signature Date



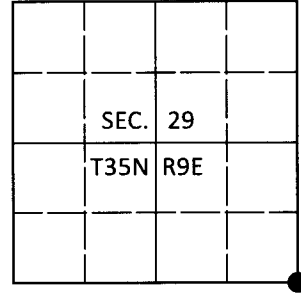
Index No. V-9

U.S. PUBLIC LAND SURVEY MONUMENT RECORD

Note: This form is intended and designed to fulfill all requirements of Wisconsin Administrative Code, Chapter A-E 7.08 U.S. Public Land Survey Monument Record (3)(a-i).

(a) CORNER LOCATION
 Cor. of Secs. 28, 29, 32 & 33
 Township 35 North
 Range 9 East of the 4th P.M.
 Town of Enterprise
 County of Oneida

WISCRS - Oneida County
 N: 108,498.62 USft
 E: 270,750.49 USft
 Datum: NAD 83(2011)
 GNSS Method: RTN - Direct
 GNSS Control: WISCORS VRS



(b) HISTORY OF ORIGINAL CORNER ESTABLISHMENT

Original Surveyor: _____ Original Accessories: _____
 Date of Survey Commenced: _____ See previous monument record(s)
 Completed: _____

(b)(f)(g)(h) Description of monument found at this corner and if it was accepted, state all evidence (material, testimonial, occupational, plats, records, other monuments) used as a basis for accepting. If not accepted or if nothing was found, state evidence used as basis for establishing location. If re-established through lost corner proportionate methods, indicate all monuments, distances and directions used to establish. Indicate type of monument and sign post found or set.

This is a perpetuation of the following monument record(s) that comprise a complete history of the corner:

Dec. 16, 1989: USPLS Monument Record No. 3509290000 by Milo E. Stefan, PLS

July 3, 2020: I found and accepted the record monument, a 2.4" diam. iron pipe with a 2.4" diam. brass cap projecting 24" above the ground surface. I found or established accessories as shown below. I found a white vinyl sign post bearing North, 1.2 ft.

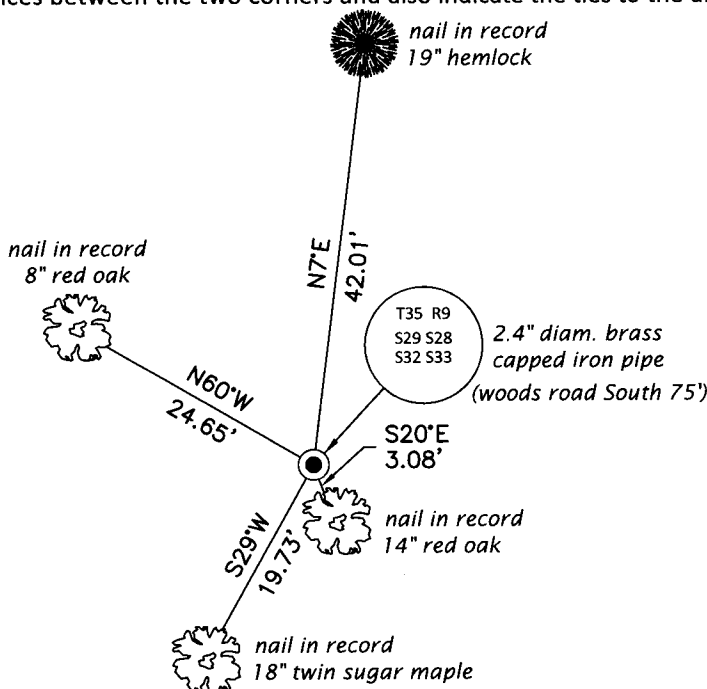
The coordinate value shown has been verified by at least one of the following methods: 1) comparison to a previously GPS determined published value; 2) the value is the average of two or more GPS observations at a markedly different time; 3) one or more distances were measured back to the GPS observed corner from temporary GPS observed offset locations.

REGISTER OF DEEDS OFFICE
 ONEIDA COUNTY
 FILED

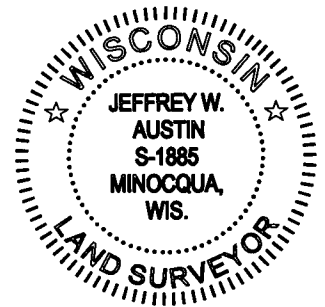
SEP 04 2020

KYLE J. FRANSON
 REGISTER OF DEEDS

(c)(d)(e) Plan view of corner with ties to at least 4 witness monuments. If in disagreement with previously established corner, show the distances between the two corners and also indicate the ties to the disputed.



Magnetic
 1" = 20'



(i) I, Jeffrey W. Austin, Professional Land Surveyor No. S-1885, hereby certify that the corner location on this record was determined by me or under my direction and control and that this U.S. Public Land Survey Monument Record is correct and complete to the best of my knowledge and belief.

[Handwritten Signature]
 Signature

AUG. 27, 2020
 Date