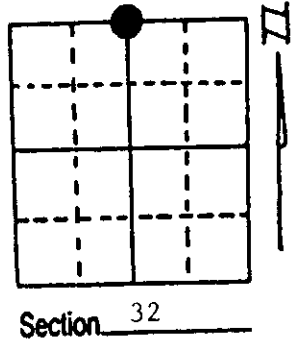


# U.S. PUBLIC LAND SURVEY MONUMENT RECORD

**Note:** This form is intended and designed to fulfill all requirements of Wisconsin Administrative Code, Chapter A-E 7.08 U.S. Public Land Survey Monument Record (3) (a) (b) (c) (d) (e) (f) (g) (h) (i). An additional sheet may be added if necessary to conform with said requirements.

(a) Corner location: Township 35 North  
 Range 9 East/West

Town/City/Village Enterprise  
 County Oneida



(b) (f) (g) (h) Description of monument found at this corner and if it was accepted, state all evidence (material, testimonial, occupational, plats, records, other monuments) used as a basis for accepting. If not accepted or if nothing was found, state evidence used as basis for establishing location. If reestablished through lost corner proportionate methods, indicate all monuments, distances and directions used to establish. Indicate type of monument found or set and sign post.

October 1864 - James Nowlin established this corner at 40.25 chains, set a wood post and two BTs:  
 10" W. Birch, S65°W, 12 Links (7.92')  
 10" W. Birch, S62°W, 25 Links (16.5')

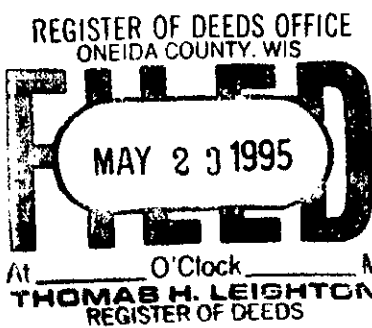
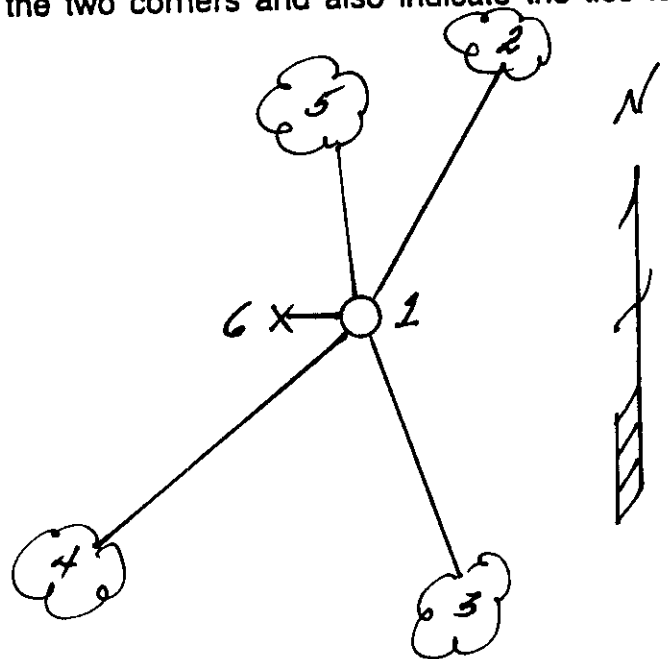
5/9/1995 - Milo E. Stefan found a 2" x 60" iron pipe with brass cap. This in the vintage of Maine's work to the West. No records of when or who placed this corner.

I accept it as a perpetuated corner position and restored the same.  
 We made four new BTs and set a plastic sign post.

(c) (d) (e) Plan view of corner with ties to at least 4 witness monuments. If in disagreement with previously established corner, show the distances between the two corners and also indicate the ties to the disputed corner.

- 1) 2" x 60" Iron Pipe/Brass Cap.
- 2) 8" Sugar Maple, N28°E, 42.08'
- 3) 13" Sugar Maple, S27°E, 22.09'
- 4) 4" Red Pine, S48°W, 33.05'
- 5) 8" Red Maple, N4°W, 17.13'
- 6) Plastic Sign Post, West, 1.0'

Distances to nail in side of BTs.  
 Stump blaze scribed "BT".  
 BT tags placed on face of each BT.



(i) I, Milo E. Stefan  
 (type or print name) certify that the corner location on this record was determined by me or under my direction and control and that this U.S. Public Land Survey Monument Record is correct and complete to the best of my knowledge and belief.

Milo E. Stefan Signature May 11, 1995 Date



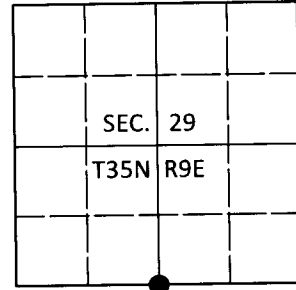
Index No. V-7

# U.S. PUBLIC LAND SURVEY MONUMENT RECORD

Note: This form is intended and designed to fulfill all requirements of Wisconsin Administrative Code, Chapter A-E 7.08 U.S. Public Land Survey Monument Record (3)(a-i).

(a) CORNER LOCATION  
 1/4 Cor. of Secs. 29 & 32  
 Township 35 North  
 Range 9 East of the 4th P.M.  
 Town of Enterprise  
 County of Oneida

WISCRS - Oneida County  
 N: 108,460.81 USft  
 E: 268,165.88 USft  
 Datum: NAD 83(2011)  
 GNSS Method: Static - Direct  
 GNSS Control: WISCORS VRS



(b) HISTORY OF ORIGINAL CORNER ESTABLISHMENT

Original Surveyor: \_\_\_\_\_ Original Accessories: \_\_\_\_\_  
 Date of Survey Commenced: \_\_\_\_\_ See previous monument record(s)  
 Completed: \_\_\_\_\_

(b)(f)(g)(h) Description of monument found at this corner and if it was accepted, state all evidence (material, testimonial, occupational, plats, records, other monuments) used as a basis for accepting. If not accepted or if nothing was found, state evidence used as basis for establishing location. If re-established through lost corner proportionate methods, indicate all monuments, distances and directions used to establish. Indicate type of monument and sign post found or set.

*This is a perpetuation of the following monument record(s) that comprise a complete history of the corner:*

*May 11, 1995: USPLS Monument Record No. 3509290020 by Milo E. Stefan, PLS*

*July 3, 2020: I found and accepted the record monument, a 2.4" diam. iron pipe with a 2.4" diam. unmarked brass cap projecting 36" above the ground surface. I found or established accessories as shown below. I found a white vinyl sign post bearing West, 1.0 ft.*

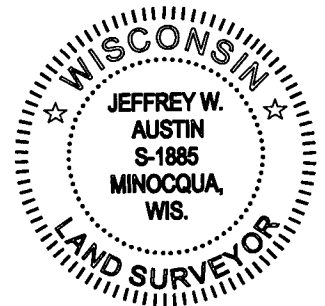
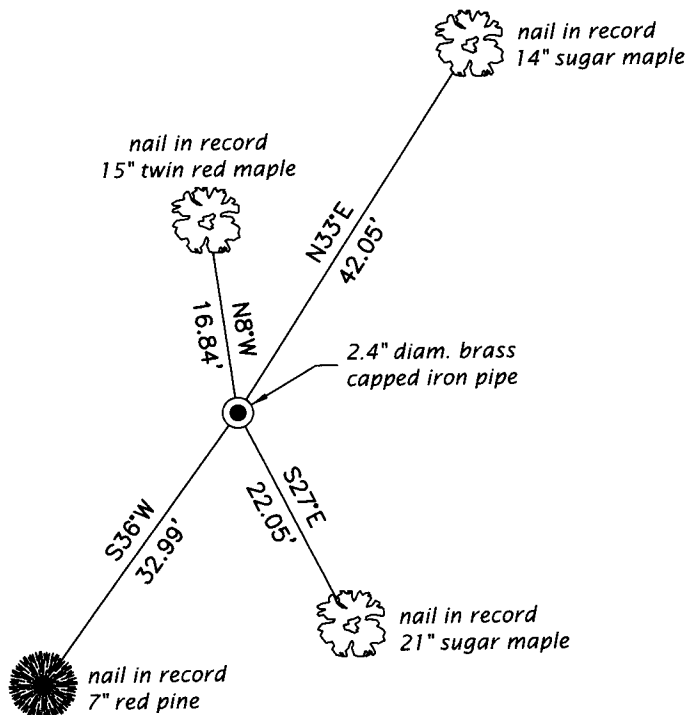
*The coordinate value shown has been verified by at least one of the following methods: 1) comparison to a previously GPS determined published value; 2) the value is the average of two or more GPS observations at a markedly different time; 3) one or more distances were measured back to the GPS observed corner from temporary GPS observed offset locations.*

REGISTER OF DEEDS OFFICE  
 ONEIDA COUNTY  
 FILED

SEP 04 2020

KYLE J. FRANSON  
 REGISTER OF DEEDS

(c)(d)(e) Plan view of corner with ties to at least 4 witness monuments. If in disagreement with previously established corner, show the distances between the two corners and also indicate the ties to the disputed.



(i) I, Jeffrey W. Austin, Professional Land Surveyor No. S-1885, hereby certify that the corner location on this record was determined by me or under my direction and control and that this U.S. Public Land Survey Monument Record is correct and complete to the best of my knowledge and belief.

*[Handwritten Signature]*  
 Signature

AUG. 27, 2020  
 Date

3509290020 (INDEX NO. V-7)