

CERTIFIED LAND CORNER RESTORATION

Index No. **E-25**

State of Wisconsin

County of Oneida } ss.

I Philip T. Hansen, do hereby

certify that on the 13th day

of August 1975, I found

evidence of the Section

corner of S1, S6, S7, S12

Township 35N, North, Range

10 and 11 East, Fourth Principal Meridian,

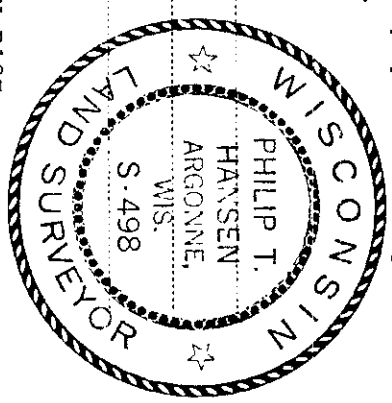
as described hereon; and that from this evidence

I established a new monument and accessories

as described hereon to perpetuate the original

location of this corner.

Resident witnesses:



History of original corner establishment: Corner established by Hiram C. Fellows, Government Deputy Surveyor, in 1859, from which birch 10" bears S60°W 14 links, sugar 6" bears N37°W 12 links, birch 10" bears N25°E 12 links, and fir 10" bears S27°E 30 links.

Corner restored by H.C. Lawrence, Registered Land Surveyor, during his retracement survey in 1949. Set a witness post, 4" cedar, 50 links east of a point incenter line of N-S road in line with fence to the west. From W.C. post a 4" well casing bears N46°E 119 links, elm 16" bears S46°E 41 links.

Description of corner evidence found:

Recovered 4" cedar post, squared and scribed S1, S6, S7, S12 in poor condition.

Recovered OBT - elm 16" (18") S46°E 41 links scribed S7, BT

Recovered well casing 4" N46°E 119 links, bearings and distance to W.C. post.

Description of monument and accessories I established to perpetuate the original location of this corner.

Set a 1" x 18" iron pipe incenter line of road, flush with ground.

Replaced 4" cedar post with 2-1/2" iron pipe with brass cap stamped -

NBT - White birch 10" S66°W 142.7 links scribed SC BT

White birch 10" S44°E 78.8 links scribed SC BT

Measurements and bearings made from true corner.

R	S1	S6	R
10	12	7	11
E			E

W-50 links  
CPI-1975

Dated at Rhineland, Wis. this 8th day of September, 1975

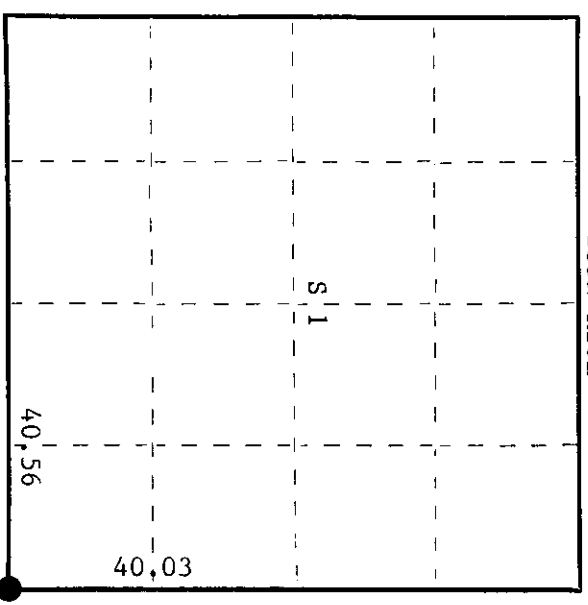
Signature: *Philip T. Hansen* Title: Registered Land Surveyor

(County Surveyor, Registered Land Surveyor, or other duly authorized official)

Office of Register of Deeds, County of Oneida, I hereby certify that the within instrument was filed in this office for record on the 14th day of October, 1975 at 2:00 o'clock P.M.

*Doris George Hurd*  
Register of Deeds

By: \_\_\_\_\_ Deputy



○ = Corner monument restored.

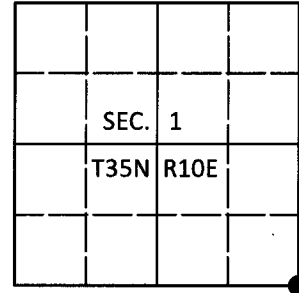
3510010000

**U.S. PUBLIC LAND SURVEY MONUMENT RECORD**

Note: This form is intended and designed to fulfill all requirements of Wisconsin Administrative Code, Chapter A-E 7.08 U.S. Public Land Survey Monument Record (3)(a-i).

(a) CORNER LOCATION  
 Cor. of Secs. 1, 6, 7 & 12  
 Township 35 North  
 Range 10 & 11 East of the 4th P.M.  
 Town of Schoepke  
 County of Oneida

WISCORS - Oneida County  
 N: 129,156.41 USft  
 E: 324,740.29 USft  
 Datum: NAD 83(2011)  
 GNSS Method: RTN - Direct  
 GNSS Control: WISCORS VRS



(b) HISTORY OF ORIGINAL CORNER ESTABLISHMENT

Original Surveyor: \_\_\_\_\_ Original Accessories: \_\_\_\_\_  
 Date of Survey \_\_\_\_\_ Commenced: \_\_\_\_\_ See previous USPLS Monument Record  
 Completed: \_\_\_\_\_

(b)(f)(g)(h) Description of monument found at this corner and if it was accepted, state all evidence (material, testimonial, occupational, plats, records, other monuments) used as a basis for accepting. If not accepted or if nothing was found, state evidence used as basis for establishing location. If re-established through lost corner proportionate methods, indicate all monuments, distances and directions used to establish. Indicate type of monument and sign post found or set.

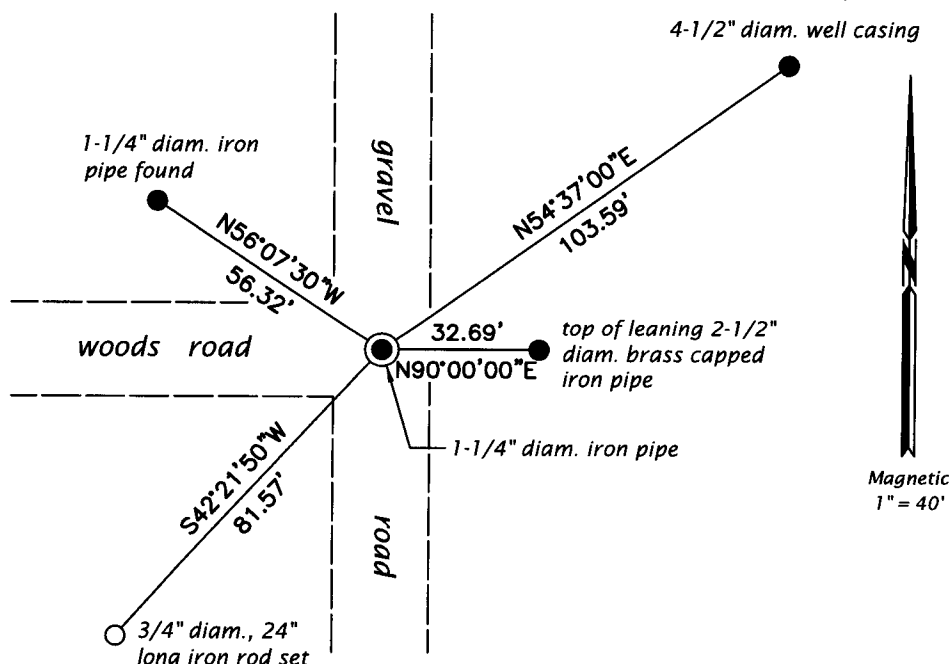
*This is a perpetuation of a previous USPLS Monument Record by Philip T. Hansen, RLS dated September 8, 1975 and filed in the office of the Oneida County Register of Deeds. A complete history of the corner can be found on the previous monument record. I accept the previous location as a true and faithful perpetuation or reestablishment of the original corner location and further perpetuate it as follows.*

*November 12, 2002: OCS Map No. B-5158 by William Bandow, RLS identifies corner as marked by a 1" diam. iron pipe set from the remaining record witness ties.*

*June 20, 2018: I found and accepted the record monument, a 1-1/4" diam. iron pipe buried 6" beneath the road surface. The birch bearing tree at S44°E is down. The elm and remaining birch are gone. I found or established accessories as shown below. I found a white vinyl sign post adjacent to the brass capped iron pipe.*

*The coordinate value shown has been verified by at least one of the following methods: 1) comparison to a previously GPS determined published value; 2) the value is the average of two or more GPS observations at a markedly different time; 3) one or more distances were measured back to the GPS observed corner from temporary GPS observed offset locations.*

(c)(d)(e) Plan view of corner with ties to at least 4 witness monuments. If in disagreement with previously established corner, show the distances between the two corners and also indicate the ties to the disputed.



REGISTER OF DEEDS OFFICE  
 ONEIDA COUNTY  
 FILED

JUL 12 2018

KYLE J. FRANSON  
 REGISTER OF DEEDS

(i) I, Jeffrey W. Austin, Professional Land Surveyor No. S-1885, hereby certify that the corner location on this record was determined by me or under my direction and control and that this U.S. Public Land Survey Monument Record is correct and complete to the best of my knowledge and belief.

Signature

JUNE 30, 2018  
 Date