

CERTIFIED LAND CORNER RESTORATION

Index No. **B-17**

State of Wisconsin

County of Oneida } ss.

I Phillip T. Hansen, do hereby certify that on the 6th day of September, 1978, I found evidence of the N 1/16 corner of Sections 2 & 3 Township 35, North, Range 10 East, Fourth Principal Meridian,

as described hereon; and that from this evidence I established a new monument and accessories as described hereon to perpetuate the original location of this corner.

Resident witnesses:

Jim Clafflin

Herb Wagoner

John Masbaum

History of original corner establishment:

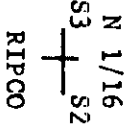
Corner established by N. Loftus, Ripco surveyor, in 1960. Ran line north from 1/4 corner between sections 10 and 11, to section corner 34, 35, 2 and 3. Set section corner 3, 2, 10 and 11 by double proportion at 39.088, 1/4 corner set by proportionate measurement and N 1/16 also set by proportionate measure.

Marked NBT's - Sugar 4" N85°E, 23 links and Sugar 6" N11°W, 37½ links

Description of corner evidence found:

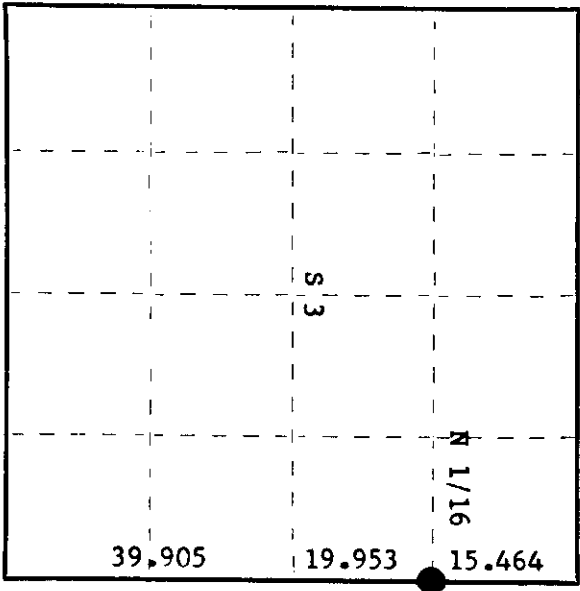
Recovered Ripco's 1" iron pipe with 2" square brass cap in good condition. Monument projects 18" above ground. Cap stamped:

Recovered OBT's - Sugar 4" (6") N85°E, 23.0 links, scribling grown over  
 Sugar 6" (8") N11°W, 37.5 links, scribling grown over



Description of monument and accessories I established to perpetuate the original location of this corner. As monument was recovered in good condition it was left in place as recovered. No additional accessories established.

T35N R10E



○ = Corner monument restored.

Dated at Rhineland Wis. this 25th day of September, 1978

Signature Phillip T. Hansen Title Registered Land Surveyor Registration No. S-498  
 (County Surveyor, Registered Land Surveyor, or other duly authorized official)

Office of Register of Deeds, County of Oneida 9th day of October, 1978  
 at 3:30 o'clock P. M. I hereby certify that the within instrument was filed in this office for record on the 9th day of October, 1978

Walter F. M. Killian  
 (Register of Deeds)

By: \_\_\_\_\_ Deputy

3510033000