

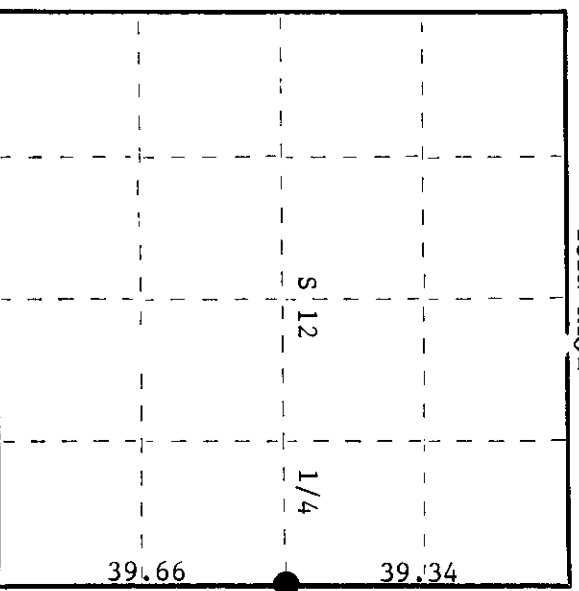
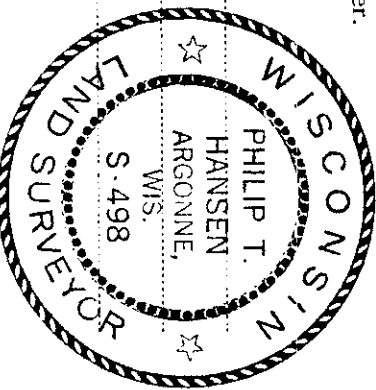
CERTIFIED LAND CORNER RESTORATION

Index No. **G-25**

State of Wisconsin }  
 County of Oneida } ss.

I Phillip T. Hansen, do hereby certify that on the 13th day of August, 19 75, I found evidence of the Quarter corner of Sections 12 and 7 Township 35N, North, Range 10 and 11 East, Fourth Principal Meridian, as described hereon; and that from this evidence I established a new monument and accessories as described hereon to perpetuate the original location of this corner.

Resident witnesses:  
 \_\_\_\_\_  
 \_\_\_\_\_  
 \_\_\_\_\_  
 \_\_\_\_\_  
 \_\_\_\_\_  
 \_\_\_\_\_



○ = Corner monument restored.

History of original corner establishment: Corner restored by H.C. Lawrence, Registered Land Surveyor, in 1949. Ran south from NE Corner, Section 12, at 39.34 chains, recovered old 1/4 post 60 links east of center line of road with rock carron piled around it. Set new post and marked white birch 14" N5°E 25 links for BT.

Description of corner evidence found:  
 Recovered 4" cedar post, squared and scribed 1/4 S S7, 1/4 S S12 in fair condition, rock carron piled around post.  
 Recovered OBT - White birch 14" (15") N5°E 25 links scribed BT

Description of monument and accessories I established to perpetuate the original location of this corner.

Replaced wooden stake with 2-1/2" iron pipe with brass cap stamped -  
 NBT - Red maple 9" N80°E scribed 1/4 BT

	S498	
R	T35N	R
10	S12   S7	11
E	1/4	E

CPI-1975

Dated at Rhineland, Wis. this 8th day of September, 19 75

Signature Phillip T. Hansen Title Registered Land Surveyor Registration No. S-498  
 (County Surveyor, Registered Land Surveyor, or other duly authorized official)

Office of Register of Deeds, County of Oneida  
 Instrument was filed in this office for record on the 14th day of October, 19 75  
 at 2:02 o'clock P. M.

Doris Lange Kuehn  
 (Register of Deeds)

By: \_\_\_\_\_ Deputy

351012 2000