

U.S. PUBLIC LAND SURVEY MONUMENT RECORD

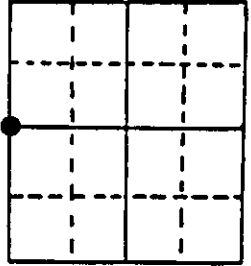
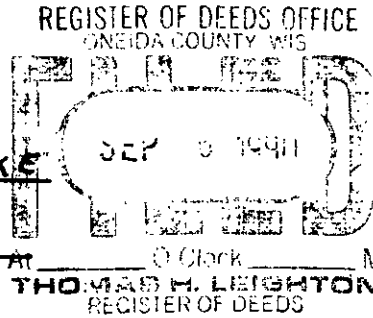
Note: This form is intended and designed to fulfill all requirements of Wisconsin Administrative Code, Chapter A-E 7.08 U.S. Public Land Survey Monument Record (3) (a) (b) (c) (d) (e) (f) (g) (h) (i). An additional sheet may be added if necessary to conform with said requirements.

(a) Corner location: Township 35 North

Range 10 East/West

Town/City/Village E. ENTERPRISE W. SCHOEPKA

County ONEIDA



Section 13

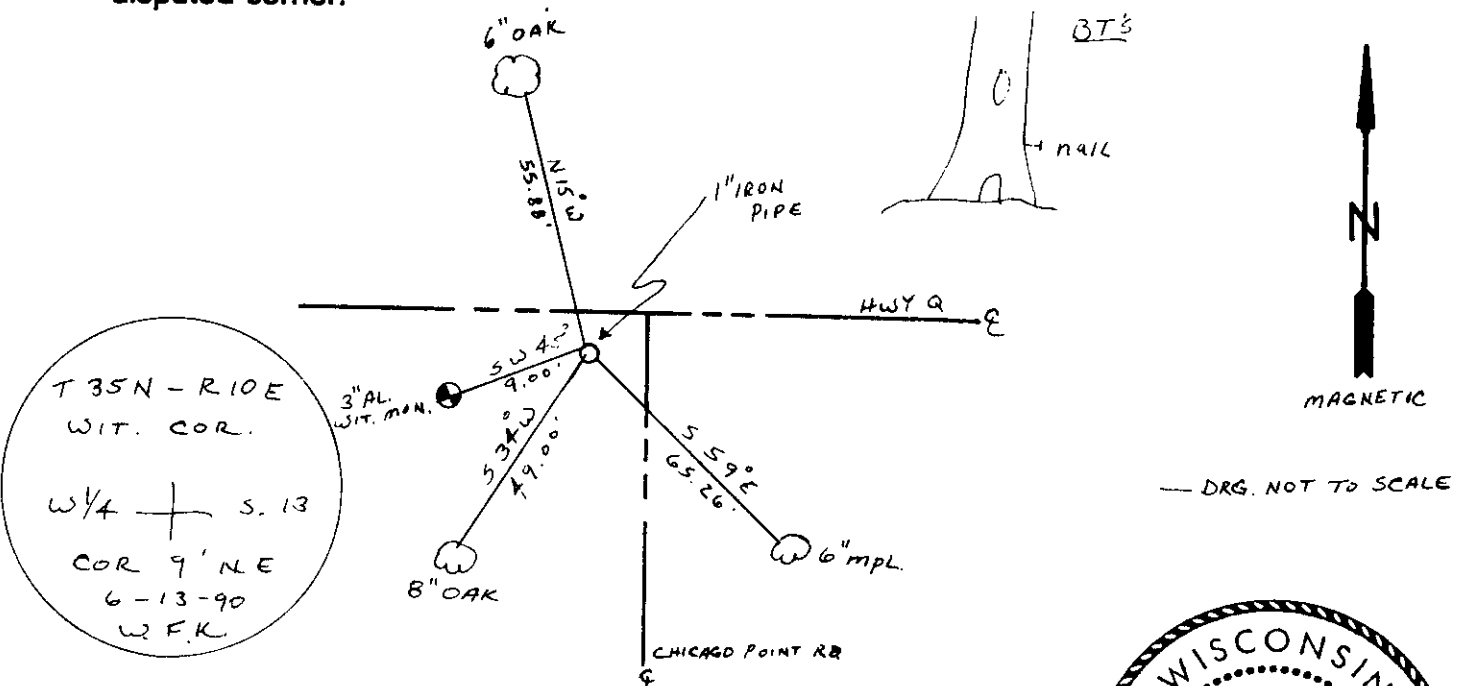
(b) (f) (g) (h) Description of monument found at this corner and if it was accepted, state all evidence (material, testimonial, occupational, plats, records, other monuments) used as a basis for accepting. If not accepted or if nothing was found, state evidence used as basis for establishing location. If reestablished through lost corner proportionate methods, indicate all monuments, distances and directions used to establish. Indicate type of monument found or set and sign post.

1865 - JAMES NOWLIN ESTABLISHED ORIGINAL CORNER, BTS: 8" BIRCH, N28E, 30 IKS, 4" " S39W, 15 "

1990 - I FOUND 1" IRON PIPE ON SIDE OF ROAD LEVEL WITH BLACKTOP SURFACE. SET 3" AL. WITNESS MONUMENT & WHITE POST SW OF CORNER

NOTE: CORNER HAS BEEN USED AS REFERENCE FOR SMALL TRACTS IN THE AREA AND IS ACCEPTED BY RESIDENTS AS 1/4 CORNER.

(c) (d) (e) Plan view of corner with ties to at least 4 witness monuments. If in disagreement with previously established corner, show the distances between the two corners and also indicate the ties to the disputed corner.



(i) I, WILLIAM F. KELLY

(type or print name) certify that the corner location on this record was determined by me or under my direction and control and that this U.S. Public Land Survey Monument Record is correct and complete to the best of my knowledge and belief.



Signature: William F. Kelly Date: 8-28-90

U.S. PUBLIC LAND SURVEY MONUMENT RECORD

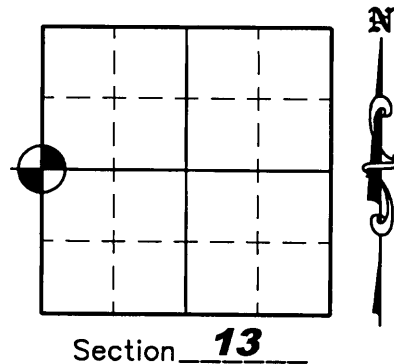
NOTE: This form is intended and designed to fulfill all requirements of Wisconsin Administrative Code, Chapter A-E 7 .08 U.S. Public Land Survey Monument Record (3)(a)(b)(c)(d)(e)(f)(g)(h)(i). An additional sheet may be added if necessary to conform with said requirements.

(a) Corner location: Township 35 North

Range 10 East

Town of SCHOEPKE

County of ONEIDA



Section 13

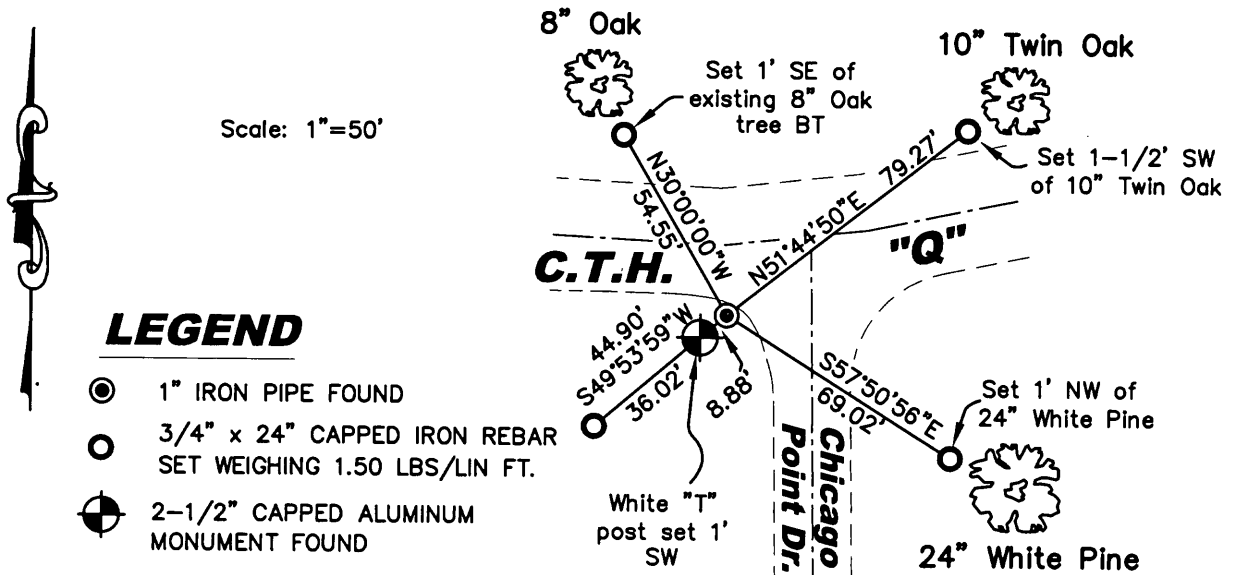
(b)(f)(g)(h) Description of monument found at this corner and if it was accepted, state all evidence (material, testimonial, occupation, plats, records, other monuments) used as a basis for accepting. If not accepted or if nothing was found, state evidence used as a basis for establishing location. If reestablished through lost corner proportionate methods, indicate all monuments, distances and directions used to establish. Indicate type of monument found or set and sign post.

1990 - William F. Kelly found a 1" iron pipe on the side of road level with blacktop surface and set a 3" Aluminum Witness Monument 9 feet Southwest of corner along the 3 other bearing trees - See U.S.P.L.S. Monument Record dated August 28, 1990.

May 15, 2006 - Due to road construction Nicolet Surveyors, Inc. was contacted by the Oneida County Land Information Office to preserve the location of this survey marker. Jonathan W. Dulin found a P.K. Nail near the edge of the blacktop road and a 2-1/2" Aluminum Witness Monument. We set four new reference corners.

November 7, 2007 - After road construction was complete we revisited the corner and found a strong magnetic beep in the gravel shoulder. We dug down about 1 foot and found the 1" iron pipe William Kelly found in 1990. We measured the ties to the found 1" iron pipe as shown below.

(c)(d)(e) Plan view of corner with ties to at least 4 witness monuments. If in disagreement with previously established corner, show the distances between the two corners and also indicate the ties to the disputed corner.



LEGEND

- 1" IRON PIPE FOUND
- 3/4" x 24" CAPPED IRON REBAR SET WEIGHING 1.50 LBS/LIN FT.
- ⊗ 2-1/2" CAPPED ALUMINUM MONUMENT FOUND

(i) I, Jonathan W. Dulin, certify that the corner location on this record was determined by me under my direction and control and that this U.S. Public Land Survey Monument is correct and complete to the best of my knowledge and belief.

Signature Jonathan W. Dulin Date 11/8/2007

REGISTER OF DEEDS OFFICE
ONEIDA COUNTY, WIS.

At O'Clock M
THOMAS H. LEIGHTON
REGISTER OF DEEDS
3510142000

Index No. L-21