

This form is intended to fulfill the requirements of Chapter A-E 7.08 (3)(a) thru (i) U.S. Public Land Survey Monument Location Record, Wisconsin Administrative Code. Use the reverse side of form for continuation.

**U.S. PUBLIC LAND SURVEY MONUMENT LOCATION RECORD**

Recorders Data

USPLS CORNER: NORTH 1/4 CORNER SECTION: 20 TOWNSHIP: 35 NORTH RANGE: 10 EAST

NAME OF WATERWAY FOR M.C. CORNER: N/A SECTION LINE: N/A

(CITY)(VILLAGE)(TOWN) OF: ENTERPRISE COUNTY OF: ONEIDA

Description of monument found or placed and all other evidence used as the basis for monument location; including monuments and related measurements required if the corner location was reestablished by lost corner proportionate methods. Also indicate name of original surveyor, original survey date and the corner monument, bearing trees, witness or other reference monuments established; including measured bearing and distance ties, from available records.

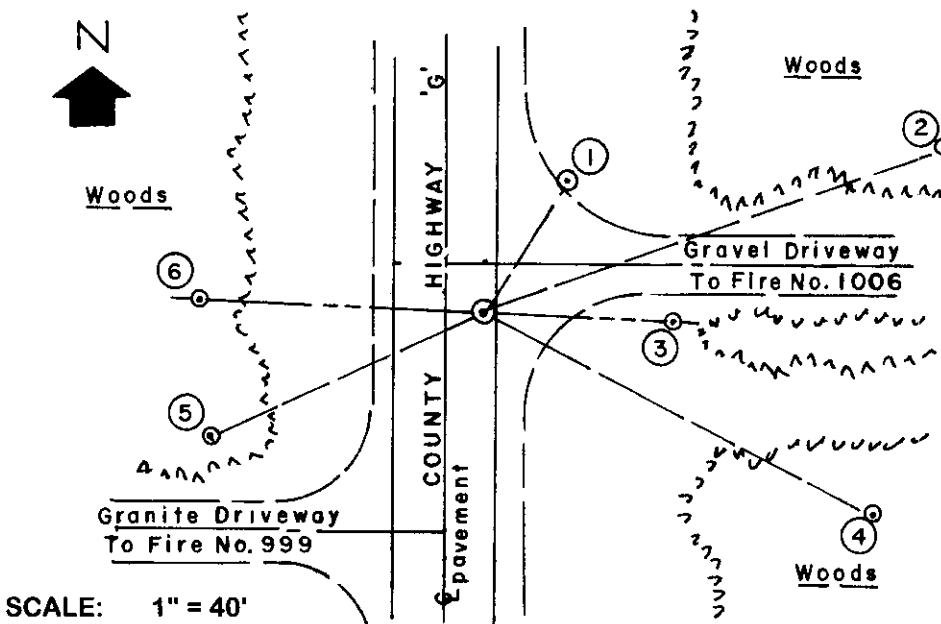
Found and accepted a PK nail in existing blacktop roadway pavement at this corner location, which I pulled and reset with a 3/4" dia. by 12" long steel shaft flush with pavement surface. The corner falls 2.5' West of the East edge of 22' blacktop mat or 8.5' East of centerline. No other corner monumentation evidence was detected by magnetic locator nor observed within roadway area. Recovery completed June 7, 1999 and witnessed by nearby owner at Fire No. 999.

In September 1865, James Nowlin/GLO set a wood post as the original corner and marked OBTs, a 10" Lind S65°W 10 links and a 20" Elm N31°E 40 lks, which are all now obliterated within roadway right-of-way.

In 1988, Norman and Todd Loftus, RLS 259 and RLS 1523, noted a railroad spike in roadway at this corner, 59.30' East of an iron pipe found per their Plat of Survey filed as C-594 and C-603 in Oneida County survey records.

In 1998, Todd Loftus, RLS 1523, notes this corner location per Plat of Survey filed as B-3847 in Oneida County survey records; upon query, he provided file ties: an 8" Maple N26°W 94.0', now a low sawed stump; a 6" Pr S75°W 53.3', now a low sawed stump; a 6" Aspen S61°E 58.1', now gone; a 13" Pr N72°E 102.9', now 18" with 60d spike in right face and upper blaze shut but overgrowth scar plain, which I used for new ties below; a standard aluminum pipe monument with Oneida County cap stamped as a witness S25°W 33.1' to corner, which I found OK 7" below the north edge surface of existing gravel private driveway turnout and used for new ties below; and an iron pipe 59.30' West of corner location, which I found OK and used for new ties below; I also found a standard white poly 'T' marker post 6" East of the NE aluminum witness monument, which I reset 6" West of the latter iron pipe reference monument N87°W of the corner.

Plan view map of monument location with bearing and distance ties to a minimum of four(4) described witness or reference monuments of concrete, natural stone, iron, live bearing trees or equivalent material. If applicable, also show a minimum of two(2) bearing and distance ties to any other monument found and not accepted; including the bearing and distance from the accepted monument.



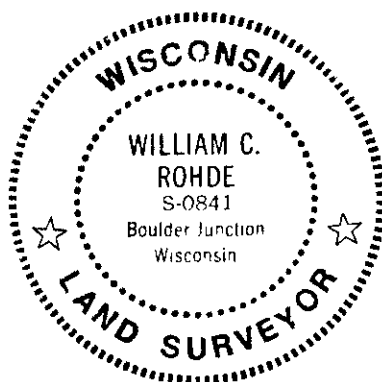
**WITNESS MONUMENT TIES:**

- ① Standard 2" dia. aluminum pipe as described above N32°E 33.12'.
- ② Old 18" Pr BT found as described above N71°E 102.90'; nailed standard BT sign to upper SW face.
- ③ 3/4" dia. x 24" I.P. set with poly Ref. Mark cap flush S87°E 40.04'.
- ④ New BT 10" and 6" Basswood common trunk S63°E 91.87'.
- ⑤ New BT 8" Pr S66°W 62.54'.
- ⑥ 1.25" dia. iron pipe found with plain coupling capped top 6" above grade N87°W 59.27'.

SCALE: 1" = 40'

Unless otherwise indicated, all bearing tree ties are to a .25" dia. by 2.5" long PK nail with a 1.25" dia. steel washer driven into unblazed right face and a .25" dia. by 2.5" long PK nail with a 2" dia. steel washer stamped BT is also driven into unblazed face of bearing tree at DBH; the basis for measured bearings is by compass to nearest degree and all tie distances are measured horizontal by steel tape corrected to nearest 1/100th feet at standard temperature of 68° F.

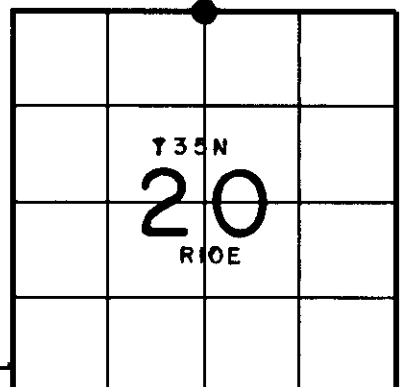
RLS SEAL:



**LAND SURVEYOR CERTIFICATE:**

I, William C. Rohde, hereby certify that I am duly licensed as a Professional Land Surveyor in the State of Wisconsin; that this USPLS monument location was determined by me and/or under my direct supervision and control; and that this U.S. Public Land Survey Monument Location Record is true and correct to the best of my knowledge and belief.

Signed *William C. Rohde*  
William C. Rohde RLS 841



SECTION LOCATION MAP

INDEX NO. N - 7

3510170020

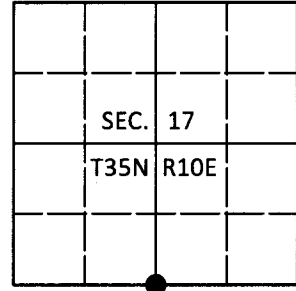


**U.S. PUBLIC LAND SURVEY MONUMENT RECORD**

Note: This form is intended and designed to fulfill all requirements of Wisconsin Administrative Code, Chapter A-E 7.08 U.S. Public Land Survey Monument Record (3)(a-i).

(a) CORNER LOCATION  
 1/4 Cor. of Secs. 17 & 20  
 Township 35 North  
 Range 10 East of the 4th P.M.  
 Town of Enterprise  
 County of Oneida

WISCORS - Oneida County  
 N: 118,714.85 USft  
 E: 300,896.85 USft  
 Datum: NAD 83(2011)  
 GNSS Method: RTN - Direct  
 GNSS Control: WISCORS VRS



(b) HISTORY OF ORIGINAL CORNER ESTABLISHMENT

Original Surveyor: \_\_\_\_\_ Original Accessories: \_\_\_\_\_  
 Date of Survey Commenced: \_\_\_\_\_ See previous USPLS Monument Record  
 Completed: \_\_\_\_\_

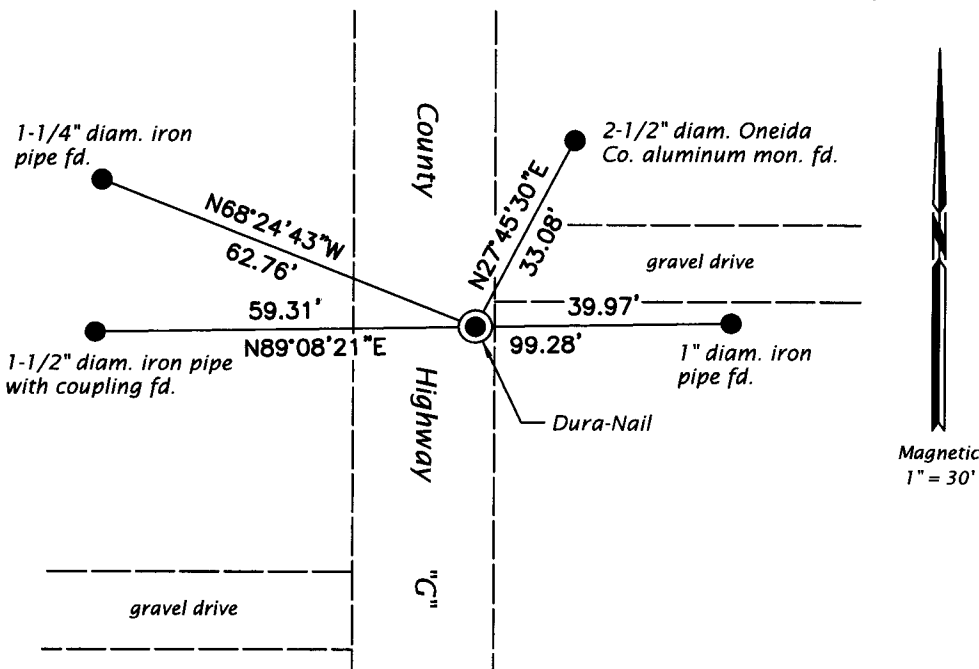
(b)(f)(g)(h) Description of monument found at this corner and if it was accepted, state all evidence (material, testimonial, occupational, plats, records, other monuments) used as a basis for accepting. If not accepted or if nothing was found, state evidence used as basis for establishing location. If re-established through lost corner proportionate methods, indicate all monuments, distances and directions used to establish. Indicate type of monument and sign post found or set.

*This is a perpetuation of a previous USPLS Monument Record by William C. Rohde and Kevin P. Bixby dated June 13, 1999 and April 10, 2005 respectively and filed in the office of the Oneida County Register of Deeds. A complete history of the corner can be found on the previous monument record. I accept the previous location as a true and faithful perpetuation or reestablishment of the original corner location and further perpetuate it as follows.*

*July 18, 2018: I found and accepted the record monument, a Dura-Nail 8 ft. East of the centerline of County Highway G. Record bearing trees were found but not remeasured. I found or established accessories as shown below. I found a white vinyl sign post adjacent to the 1-1/2" diam. iron pipe.*

*The coordinate value shown has been verified by at least one of the following methods: 1) comparison to a previously GPS determined published value; 2) the value is the average of two or more GPS observations at a markedly different time; 3) one or more distances were measured back to the GPS observed corner from temporary GPS observed offset locations.*

(c)(d)(e) Plan view of corner with ties to at least 4 witness monuments. If in disagreement with previously established corner, show the distances between the two corners and also indicate the ties to the disputed.



REGISTER OF DEEDS OFFICE  
 ONEIDA COUNTY  
 FILED  
**AUG 16 2018**  
 KYLE J. FRANSON  
 REGISTER OF DEEDS

(i) I, Jeffrey W. Austin, Professional Land Surveyor No. S-1885, hereby certify that the corner location on this record was determined by me or under my direction and control and that this U.S. Public Land Survey Monument Record is correct and complete to the best of my knowledge and belief.

\_\_\_\_\_  
 Signature Date **Aug. 8, 2018**