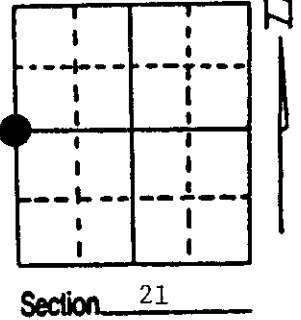


U.S. PUBLIC LAND SURVEY MONUMENT RECORD

Note: This form is intended and designed to fulfill all requirements of Wisconsin Administrative Code, Chapter A-E 7.08 U.S. Public Land Survey Monument Record (3) (a) (b) (c) (d) (e) (f) (g) (h) (i). An additional sheet may be added if necessary to conform with said requirements.

(a) Corner location: Township 35 North
 Range 10 East/West
 Town/City/Village Enterprise
 County Oneida



(b) (f) (g) (h) Description of monument found at this corner and if it was accepted, state all evidence (material, testimonial, occupational, plats, records, other monuments) used as a basis for accepting. If not accepted or if nothing was found, state evidence used as basis for establishing location. If reestablished through lost corner proportionate methods, indicate all monuments, distances and directions used to establish. Indicate type of monument found or set and sign post.

1865 - James Nowlin established this corner at 40.00 chains and set a wood post with two BTs:

5" Fir, S70°W, 25 Links (16.50') 9" Fir, N73°E, 125 Links (82.50')

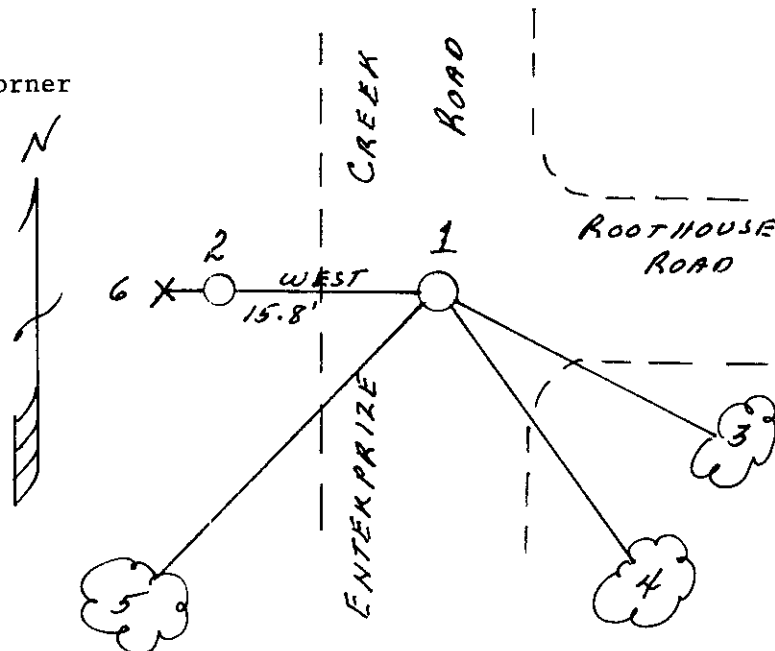
5/24/1995 - Milo E. Stefan found an 1 1/4" x 30" iron pipe in "T" of road. Pipe badly bent. Also, a Witness Monument (2" x 30" aluminum) West 15.8'.

We replaced the damaged iron pipe with a 1" x 24" iron pipe 6" below road surface, made new BTs and set plastic sign post.

(c) (d) (e) Plan view of corner with ties to at least 4 witness monuments. If in disagreement with previously established corner, show the distances between the two corners and also indicate the ties to the disputed corner.

- 1) 1" x 24" iron pipe
- 2) 2" x 30" aluminum monument as Witness Corner
- 3) 10" Red Pine, S65°E, 95.05'
- 4) 8" White Spruce, S44°E, 94.63'
- 5) 10" Black Ash, S30°W, 67.13'
- 6) Plastic Sign Post, West, 16.2'

Distances to nail in side of BTs.
 Stump blaze scribed BT.
 BT tags to face of each BT.



REGISTER OF DEEDS OFFICE
 ONEIDA COUNTY WIS.
FILED
 JUL 11 1995
 At _____ O'Clock _____ M
THOMAS H. LEIGHTON
 REGISTER OF DEEDS

(i) I, Milo E. Stefan
 (type or print name) certify that the corner location on this record was determined by me or under my direction and control and that this U.S. Public Land Survey Monument Record is correct and complete to the best of my knowledge and belief.

Milo E Stefan
 Signature

July 10, 1995
 Date



3510202000