

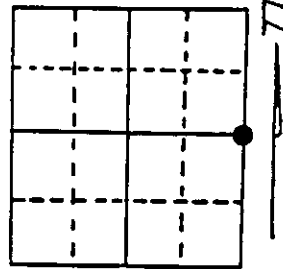
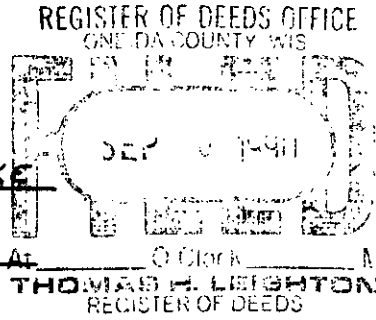
U.S. PUBLIC LAND SURVEY MONUMENT RECORD

Note: This form is intended and designed to fulfill all requirements of Wisconsin Administrative Code, Chapter A-E 7.08 U.S. Public Land Survey Monument Record (3) (a) (b) (c) (d) (e) (f) (g) (h) (i). An additional sheet may be added if necessary to conform with said requirements.

(a) Corner location: Township 35 North
 Range 10 East/West

Town/City/Village E. ENTERPRISE W. SCHOEDKE

County ONEIDA



Section 21

(b) (f) (g) (h) Description of monument found at this corner and if it was accepted, state all evidence (material, testimonial, occupational, plats, records, other monuments) used as a basis for accepting. If not accepted or if nothing was found, state evidence used as basis for establishing location. If reestablished through lost corner proportionate methods, indicate all monuments, distances and directions used to establish. Indicate type of monument found or set and sign post.

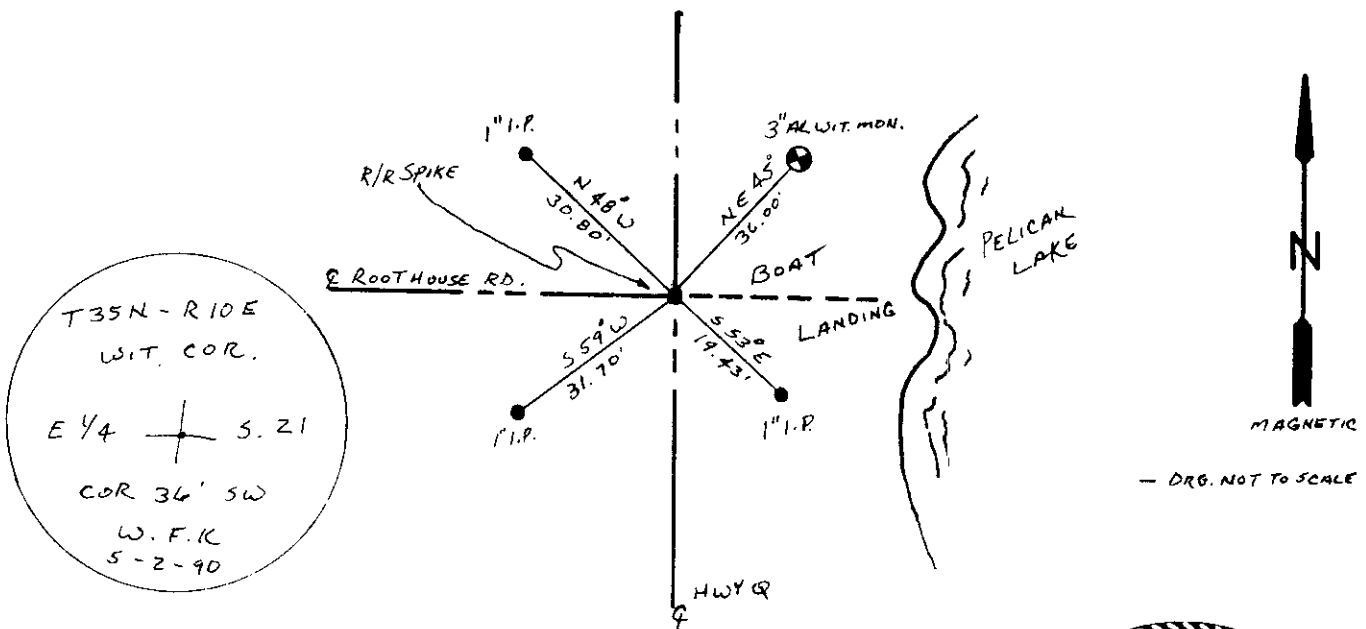
1865 - JAMES NOWLIN ESTABLISHED ORIGINAL CORNER; BT'S: 12" TAMARACK, S23°E, 20 IKS.
 14" " " N27°W, 18 "

1929 - H.C. HALL IDENTIFIED ORIGINAL CORNER IN CROSS ROADS BY OLD BT, STUMP.

1967 - FR. WINCENTSEN SET IRON PIPE 33' EAST OF CORNER (PIPE REMOVED BY BOAT LANDING CONST)

1990 - I FOUND IRON UNDER SURFACE OF ROAD, SET R/R SPIKE OVER IRON SET 3" AL. WITNESS MONUMENT NORTH EAST OF CORNER

(c) (d) (e) Plan view of corner with ties to at least 4 witness monuments. If in disagreement with previously established corner, show the distances between the two corners and also indicate the ties to the disputed corner.



(i) I, WILLIAM F. KELLY
 (type or print name) certify that the corner location on this record was determined by me or under my direction and control and that this U.S. Public Land Survey Monument Record is correct and complete to the best of my knowledge and belief.

William F. Kelly 8-28-90
 Signature Date



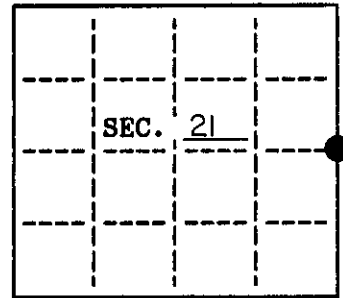
Index No. P-13

Stamp
 3510212000

U. S. PUBLIC LAND SURVEY MONUMENT RECORD

Note: This form is intended and designed to fulfill all requirements of Wisconsin Administrative Code, Chapter A-E 7.08 U.S. Public Land Survey Monument Record (3)(a)(b)(c)(d)(e)(f)(g)(h)(i). An additional sheet may be added if necessary to conform with said requirements.

(a) CORNER LOCATION: State Plane Coordinates
E 1/4 corner of Sec. 21 X _____
 Township 35 North Y _____
 Range 10 East Datum Base _____
 Town/City ENTERPRISE County of _____



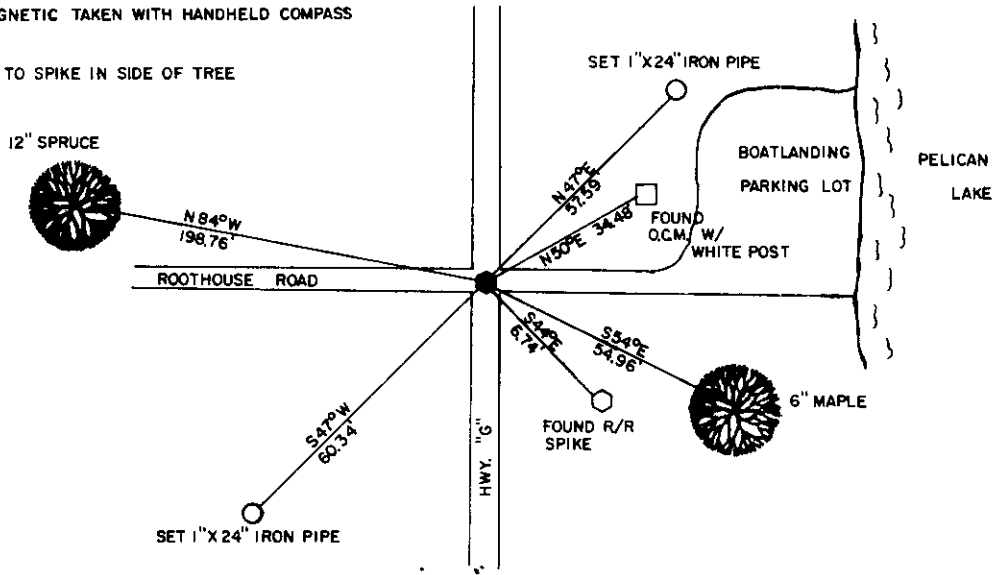
(b) HISTORY OF ORIGINAL CORNER ESTABLISHMENT
 Original Surveyor: _____ Original B.T.'S _____
 Date of Survey: Commenced _____
 Completed _____

(b)(f)(g)(h) Description of monument found at this corner and if it was accepted, state all evidence (material, testimonial, occupational, plats, records, other monuments) used as a basis for accepting. If not accepted or if nothing was found, state evidence used as basis for establishing location. If reestablished through lost corner proportionate methods, indicate all monuments, distances and directions used to establish. Indicate type of monument and sign post found or set.

- 1865 - James Nowlin established original corner; BT's:
 12" Tamarack, S 23° E, 20 lks.
 14" Tamarack, N 27° W, 18 lks.
- 1920 - H.C. Hall identified original corner in cross roads by old B.T. stump.
- 1967 - F.R. Wincentzen set iron pipe 33' east of corner (pipe removed by boat landing construction)
- 1990 - William Kelly found iron under surface of road, set R/R spike over iron. Set 3" al. Witness monument northeast of corner.
- 2002 - I found 1/2" iron pipe near c/l - c/l and accepted. (see back)

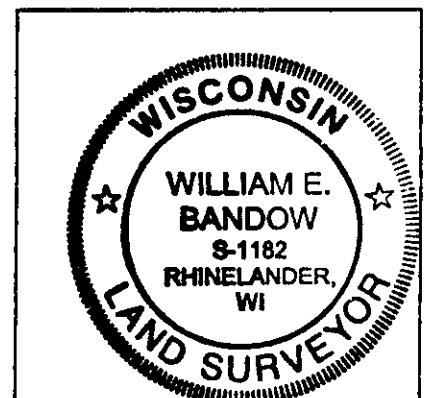
(c)(d)(e) Plan view of corner with ties to at least 4 witness monuments. If in disagreement with previously established corner, show the distances between the two corners and also indicate the ties to the disputed.

BEARINGS MAGNETIC TAKEN WITH HANDHELD COMPASS
 NO SCALE
 BT. DISTANCE TO SPIKE IN SIDE OF TREE



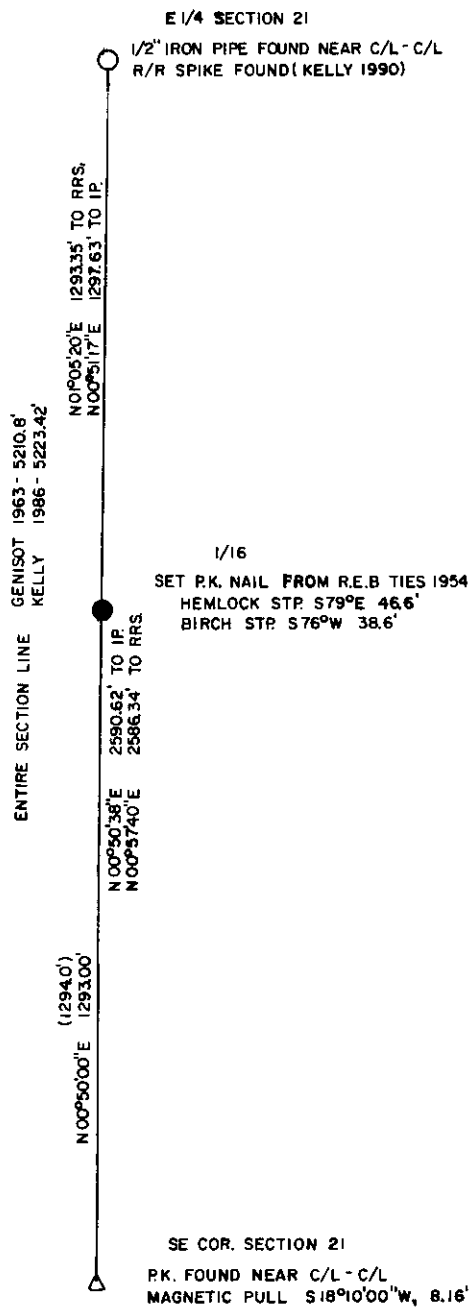
(i) I, William E. Bandow
 hereby certify that the corner location on this record was determined by me or under my direction and control and that this U.S. Public Land Survey Monument Record is correct and complete to the best of my knowledge and belief.

William E. Bandow 6-25-02
 Signature Date



INDEX NO. P13

3510212000



REGISTER OF DEEDS OFFICE
ONEIDA COUNTY, WIS

JUL 8 2002

A: O'Clock M
THOMAS H. LEIGHTON
REGISTER OF DEEDS

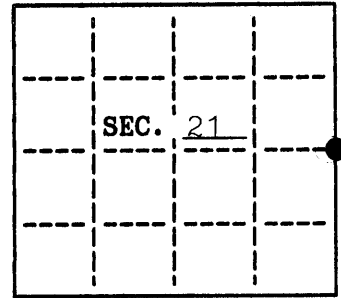
U.S. PUBLIC LAND SURVEY MONUMENT RECORD

Note: This form is intended and designed to fulfill all requirements of Wisconsin Administrative Code, Chapter A-8 7.08 U.S. Public Land Survey Monument Record (3)(a)(b)(c)(d)(e)(f)(g)(h)(i). An additional sheet may be added if necessary to conform with said requirements.

(a) CORNER LOCATION:

E $\frac{1}{4}$ corner of Sec. 21
 Township 35 North
 Range 10 East
 Town/City Enterprise

Oneida County
~~XXXXXX~~ State Plane Coordinates
 X 116191.625
 Y 308854.993
 Datum Base _____
 County of Oneida



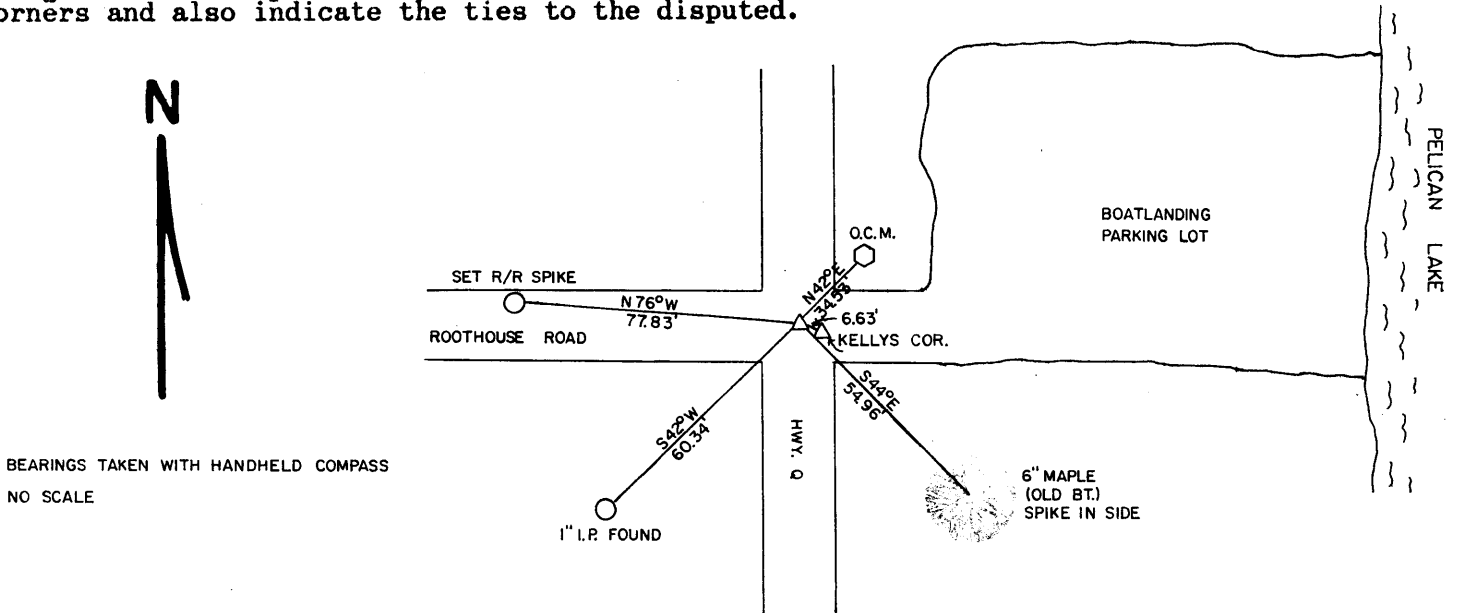
(b) HISTORY OF ORIGINAL CORNER ESTABLISHMENT

Original Surveyor: James Nowlin Original B.T.'S
 Date of Survey: Commenced 1865 12" Tamarack S 23° E 20 lks.
 Completed 1865 14" Tamarack N 27° W 18 lks.

(b)(f)(g)(h) Description of monument found at this corner and if it was accepted, state all evidence (material, testimonial, occupational, plats, records, other monuments) used as a basis for accepting. If not accepted or if nothing was found, state evidence used as basis for establishing location. If reestablished through lost corner proportionate methods, indicate all monuments, distances and directions used to establish. Indicate type of monument and sign post found or set.

- 1929 H.C. Hall identified original corner in cross roads by old B.T. stump
- 1967 F.R. Wincentsen set iron pipe 33' east of corner (pipe removed boat landing construction).
- 1990 William Kelly found iron under surface of road, set R.R. spike over iron. Set 3" alum. witness monument northeast of corner.
- 2002 William E. Badow found $\frac{1}{2}$ " iron pipe near c/l-c/l and accepted, found Kelly's R.R. spike SE of corner, made B.T.'s and set two witness iron pipe
- 2004 I found both corners to be gone due to road construction. Found O.C.M. to the NE lying on ground. Reset as shown. Reset mag. nail for Badow corner from 2 remaining ties. Using Trimble 5700, 5800 and harn base station 239s acquired coords on Badow corner and from coords given by I I O. I found to fit Kelly's corner very well based on one remaining

(c)(d)(e) Plan view of corner with ties to at least 4 witness monuments. If in disagreement with previously established corner, show the distances between the two corners and also indicate the ties to the disputed.



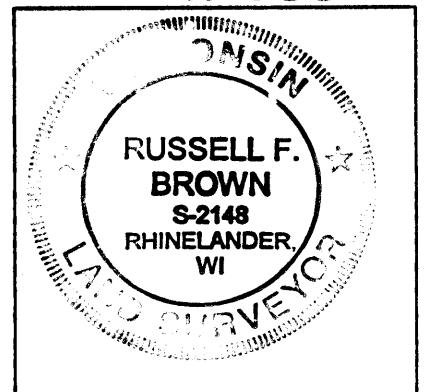
BEARINGS TAKEN WITH HANDHELD COMPASS
 NO SCALE

SEE ATTACHED SHEET

3510212000

(i) I, Russell F. Brown
 hereby certify that the corner location on this record was determined by me or under my direction and control and that this U.S. Public Land Survey Monument Record is correct and complete to the best of my knowledge and belief.

Russell F. Brown 12/21/04
 Signature Date



INDEX NO. P13

U.S. PUBLIC LAND SURVEY MONUMENT RECORD

Note: This form is intended and designed to fulfill all requirements of Wisconsin Administrative Code, Chapter A-8 7.08 U.S. Public Land Survey Monument Record (3)(a)(b)(c)(d)(e)(f)(g)(h)(i). An additional sheet may be added if necessary to conform with said requirements.

(a) CORNER LOCATION:

Oneida County
State Plane Coordinates

E $\frac{1}{2}$ corner of Sec. 21

X 116187.449

Township 35 North

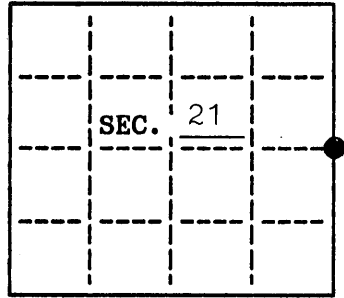
Y 308860.102

Range 10 East

Datum Base

Town ~~NEW~~ Enterprise

County of Oneida



(b) HISTORY OF ORIGINAL CORNER ESTABLISHMENT

Original Surveyor: James Nowlin

Original B.T.'S

Date of Survey: Commenced 1865

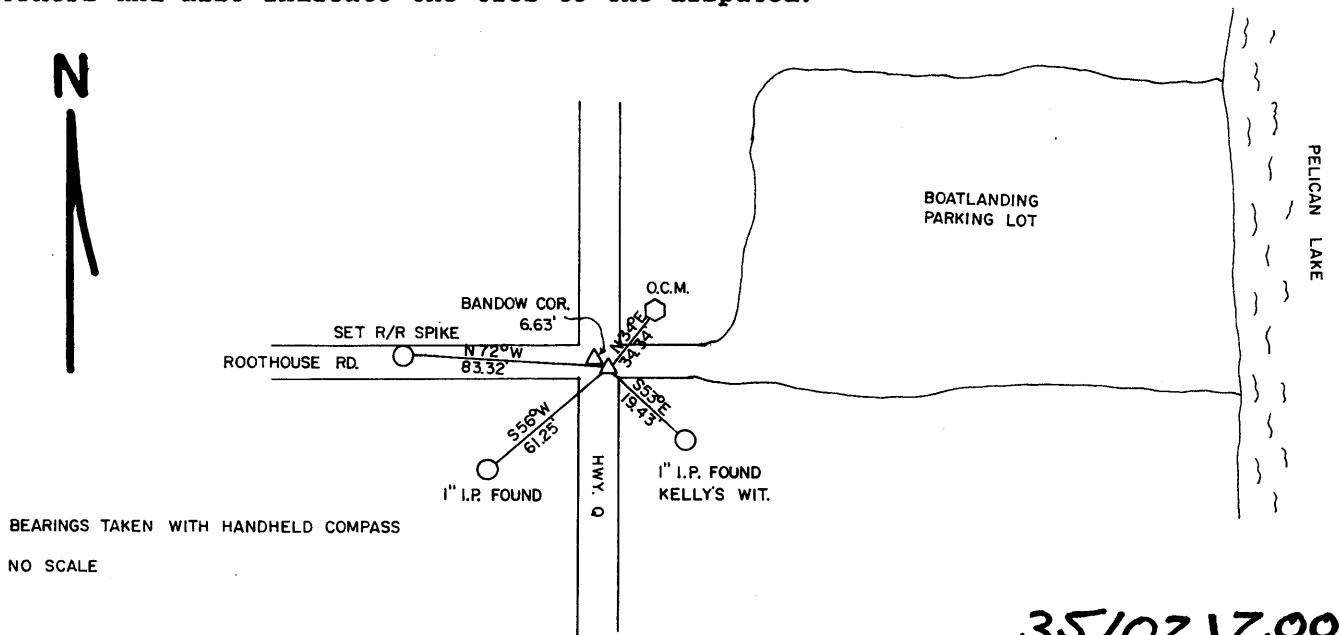
8" Tamarack N 31° W 14 lks.
10" Tamarack S 38° E 18 lks.

Completed 1865

(b)(f)(g)(h) Description of monument found at this corner and if it was accepted, state all evidence (material, testimonial, occupational, plats, records, other monuments) used as a basis for accepting. If not accepted or if nothing was found, state evidence used as basis for establishing location. If reestablished through lost corner proportionate methods, indicate all monuments, distances and directions used to establish. Indicate type of monument and sign post found or set.

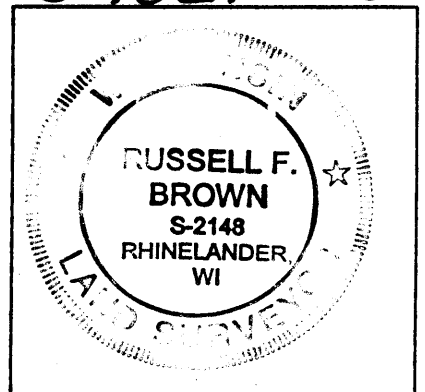
witness to the SE and distance to Bandow corner. To the best of my knowledge the corner by Kelly was used and fits previous surveys to the north; and the other corner was used for surveys to the south. I tied both corners as shown below (attached) along with G.P.S. coordinates.

(c)(d)(e) Plan view of corner with ties to at least 4 witness monuments. If in disagreement with previously established corner, show the distances between the two corners and also indicate the ties to the disputed.



SEE ATTACHED SHEET

35/0212000



INDEX NO. P13

(i) I, Russell F. Brown
hereby certify that the corner location on this record was determined by me or under my direction and control and that this U.S. Public Land Survey Monument Record is correct and complete to the best of my knowledge and belief.

Russell F. Brown 12/21/04
Signature Date

U.S. PUBLIC LAND SURVEY MONUMENT RECORD

NOTE: This form is intended and designed to fulfill all requirements of Wisconsin Administrative Code, Chapter A-E 7.08 U.S. Public Land Survey Monument Record. An additional sheet may be added if necessary to conform with said requirements.

CORNER LOCATION

Quarter Corner common to Sections 21 and 22
Township 35 North, Range 10 East of the 4th P.M.
Town of Enterprise, Oneida County, Wisconsin

**REGISTER OF DEEDS OFFICE
ONEIDA COUNTY
FILED**

SEP 10 2018

**KYLE J. FRANSON
REGISTER OF DEEDS**

6	5	4	3	2	1
7	8	9	10	11	12
18	17	16	15	14	13
19	20	21	● 22	23	24
30	29	28	27	26	25
31	32	33	34	35	36

T35N - R10E

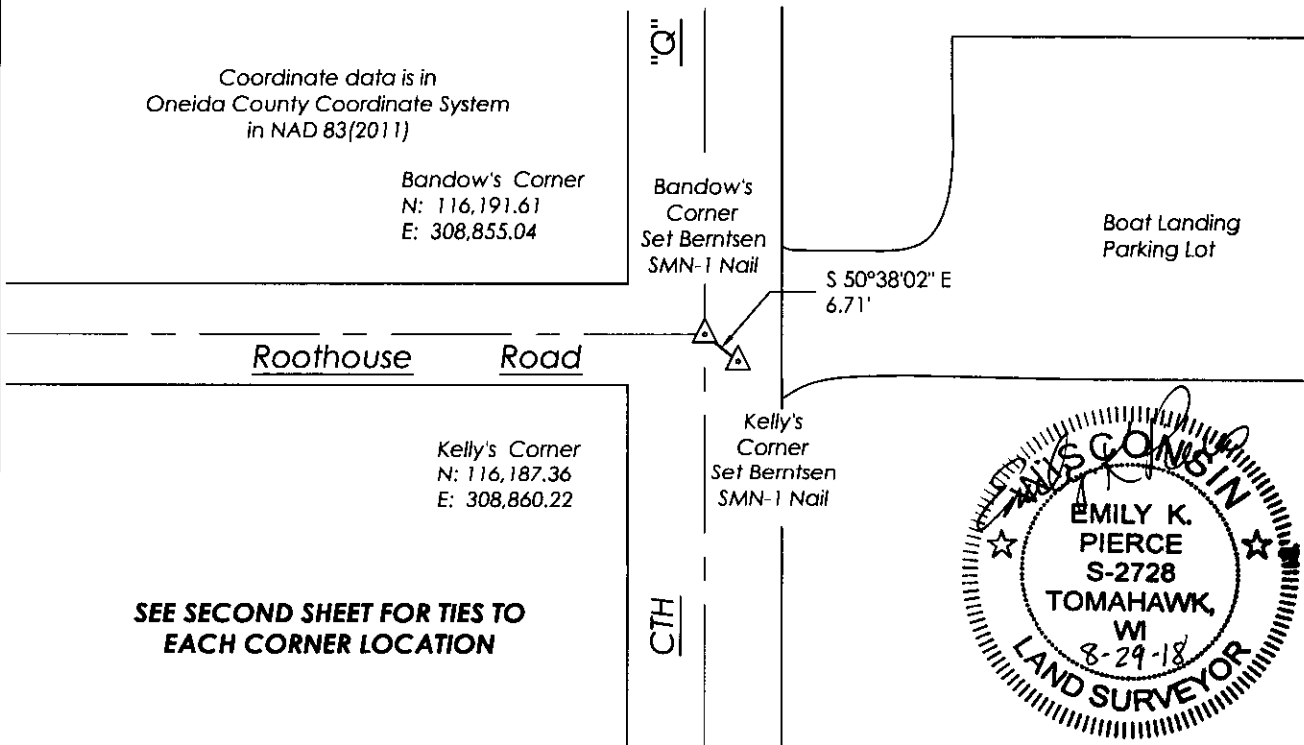
HISTORY OF ORIGINAL CORNER ESTABLISHMENT

ORIGINAL SURVEYOR: James Nowlin
DATE OF SURVEY: 1865
ORIGINAL ACCESSORIES: 12" Tamarack, S23°E, 20 lks
14" Tamarack, N27%W, 18 lks

DESCRIPTION OF MONUMENT FOUND AT THIS CORNER AND IF IT WAS ACCEPTED, STATE ALL EVIDENCE (MATERIAL, TESTIMONIAL, OCCUPATIONAL, PLATS, RECORDS, OTHER MONUMENTS) USED AS A BASIS FOR ACCEPTING. IF NOT ACCEPTED OR IF NOTHING WAS FOUND, STATE EVIDENCE USED AS BASIS FOR ESTABLISHING LOCATION. IF RE-ESTABLISHED THROUGH LOST CORNER PROPORTIONATE METHODS, INDICATE ALL MONUMENTS, DISTANCES AND DIRECTIONS USED TO ESTABLISH. INDICATE TYPE OF MONUMENT AND SIGN POST FOUND OR SET.

- 1929 H.C. Hall identified original corner in cross roads by old B.T. stump.
- 1967 F.R. Wincentsen set iron pipe 33' east of corner (pipe removed during boat landing construction).
- 1990 William Kelly found iron under surface of road, set R.R. spike over iron. Set 3" aluminum witness monument northeast of corner.
- 2002 William Badow found 1/2" iron pipe near the intersection of centerlines and accepted. Found Kelly's R.R. spike SE of corner and made B.T.s and set two witness iron pipes.
- 2004 Russell Brown found both Kelly's and Badow's corners to be gone due to road construction. Found Oneida County monument to the northeast lying on the ground. Reset mag nail for Badow corner from 2 remaining ties. Using Trimble 5700/5800 and Harn base station 239s acquired coords on Badow corner and from coords given by Land Information Office Brown found to fit Kelly's corner very well base on one remaining witness to the southeast and distance to Badow corner. To the best of Brown's knowledge, the corner by Kelly was used and fits previous surveys to the north, and Badow's corner was used for surveys to the south. Brown tied both corners as shown on his tiesheet.
- 6/14/2016 I visited corner location and found MAG nails at both Kelly's corner location and Badow's corner location. I also found two remaining ties and a R.R. spike in the blacktop of Roothouse Rd and a 3.5" Oneida County aluminum monument. I located both corners, the remaining ties and set three new ties to aid in corner recovery after road construction. GPS observations are shown below and measurements from each corner to all corners ties are shown on second sheet.
- 8/22/2018 I visited corner and found all ties. Road recently blacktopped. Set Berntsen SMN-1 Nails at both previously monumented corner locations.

PLAN VIEW OF CORNER WITH TIES TO AT LEAST 4 WITNESS MONUMENTS. IF IN DISAGREEMENT WITH PREVIOUSLY ESTABLISHED CORNER, SHOW THE DISTANCES BETWEEN THE TWO CORNERS AND ALSO INDICATE THE TIES TO THE DISPUTED.



I, Emily K. Pierce, Professional Land Surveyor No. S-2728, hereby certify that the corner location on this record was determined by me or under my direction and control and that this U.S. Public Land Survey Monument Record is correct and complete to the best of my knowledge and belief.

Emily K. Pierce
Emily K. Pierce, PLS No. S-2728
STEIGERWALDT LAND SURVEYING, LLC

P-13

U.S. PUBLIC LAND SURVEY MONUMENT RECORD

NOTE: This form is intended and designed to fulfill all requirements of Wisconsin Administrative Code, Chapter A-E 7.08 U.S. Public Land Survey Monument Record. An additional sheet may be added if necessary to conform with said requirements.

CORNER LOCATION

Quarter Corner common to Sections 21 and 22
Township 35 North, Range 10 East of the 4th P.M.
Town of Enterprise, Oneida County, Wisconsin

I, Emily K. Pierce, Professional Land Surveyor No. S-2728, hereby certify that the corner location on this record was determined by me or under my direction and control and that this U.S. Public Land Survey Monument Record is correct and complete to the best of my knowledge and belief.

Emily K. Pierce, PLS No. S-2728
STEIGERWALDT LAND SURVEYING, LLC

REGISTER OF DEEDS OFFICE
ONEIDA COUNTY
FILED

SEP 10 2018

KYLE J. FRANSON
REGISTER OF DEEDS

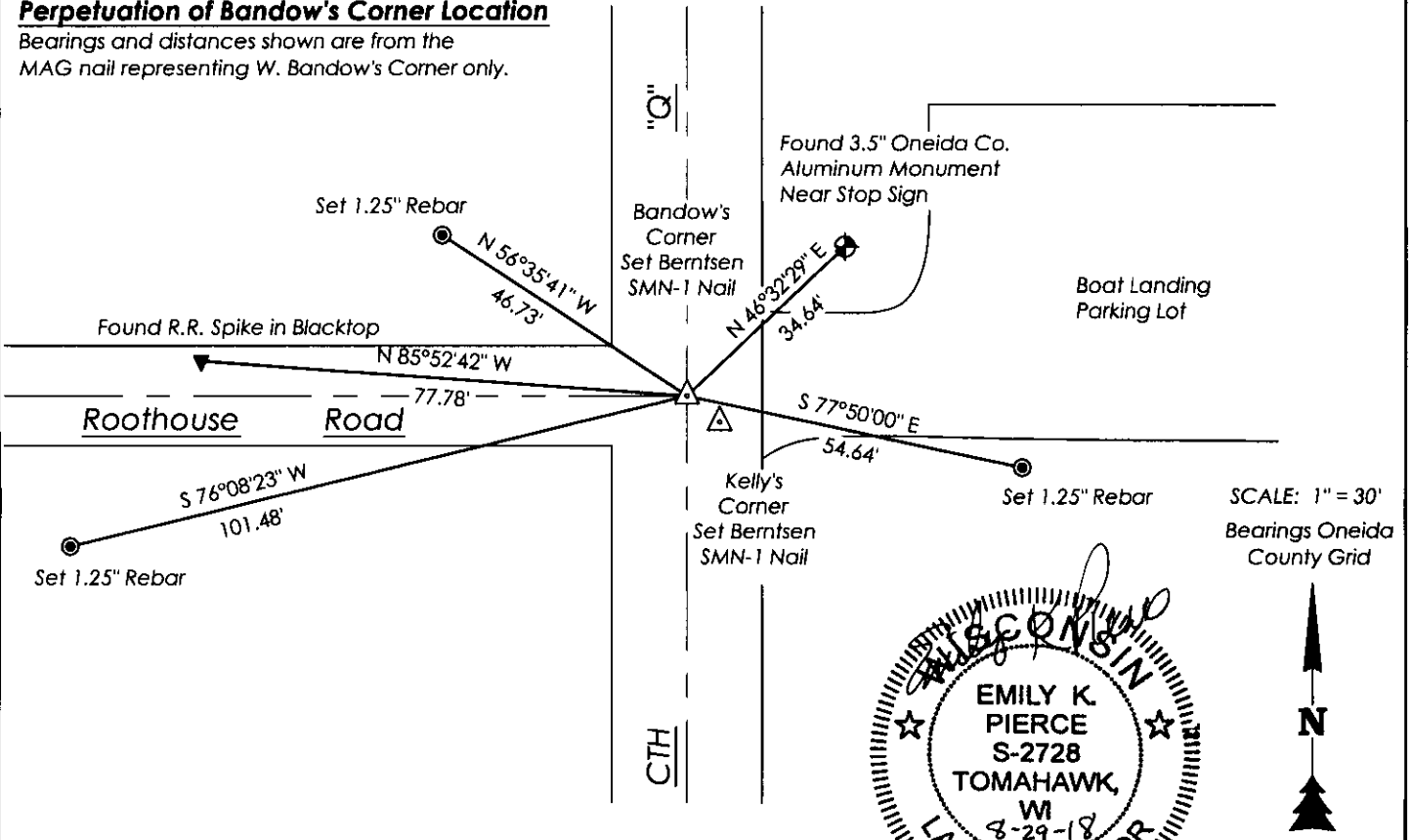
6	5	4	3	2	1
7	8	9	10	11	12
18	17	16	15	14	13
19	20	21	22	23	24
30	29	28	27	26	25
31	32	33	34	35	36

T35N - R10E

PLAN VIEW OF CORNER WITH TIES TO AT LEAST 4 WITNESS MONUMENTS. IF IN DISAGREEMENT WITH PREVIOUSLY ESTABLISHED CORNER, SHOW THE DISTANCES BETWEEN THE TWO CORNERS AND ALSO INDICATE THE TIES TO THE DISPUTED.

Perpetuation of Bandow's Corner Location

Bearings and distances shown are from the
MAG nail representing W. Bandow's Corner only.



Perpetuation of Kelly's Corner Location

Bearings and distances shown are from the
MAG nail representing W. Kelly's corner only.

