

CERTIFIED LAND CORNER RESTORATION

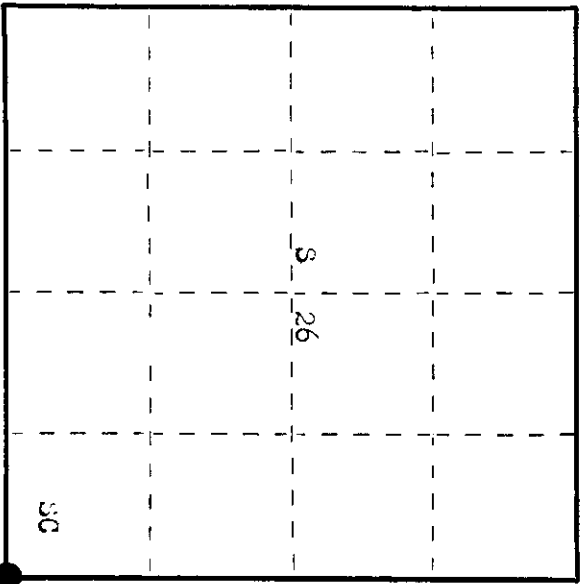
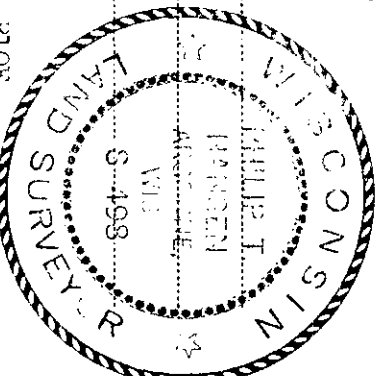
Index No. **V-21**

State of Wisconsin

County of Oneida } ss.

I Phillip T. Hansen, do hereby certify that on the 5th day of April, 1976, I found evidence of the section corner of 325, 20, 25, 36 Township 10 East, 35 North, Range 10 East, Fourth Principal Meridian, as described hereon; and that from this evidence I established a new monument and accessories as described hereon to perpetuate the original location of this corner.

Resident witnesses:
 Glen Barker
 Jim Clafflin
 Herb Wagoner



○ = Corner monument restored.

History of original corner establishment: Original corner established by James H. Rowlin, deputy surveyor in 1805, from which birch 24" bears N 71° W 42 lks, sugar 30" bears N 29° W 25 lks. D.H. Vaughan's records states he found an corner sec. 25, set by Jorr, all OK from which he ran east, var. 4° 0' W. 39.55 chains to 1/4 Corner. H.C. Lawrence, registered land surveyor, ran a line west magnetic from recovered 1/4 corner between sec. 25 and 36, at 43.50 chains, intersected the centerline of section line road 24 lks north of old fence line west and an old fence line running east. Also found an old scribed post down, but grown between two trees. Could not find any old BTs, set new post, no BTs.

Description of corner evidence found:
 Recovered Lawrence's 3" Hemlock Post, squared and scribed 325, 20, 335, 336, in poor condition. Also found an old cedar stake leaning against Y. Birch near H.C. Lawrence's post.

Description of monument and accessories I established to perpetuate the original location of this corner.
 As this corner is near the highway and in danger of being destroyed, the hemlock post was replaced with a 1 1/2" x 1 1/2" iron pipe driven below the surface of ground. A 2 1/2" iron pipe with brass cap was set 50 lks east for witness post.
 Pipe projects 2 ft. above ground. Cap stamped.
 NBTS - Sugar 6" N 69° W 76.3 lks, scribed 30 BT.
 Sugar 8" S 74° W 118.2 lks, scribed 30 BT.
 H. Oak 12" S 39° W 88.7 lks, scribed 30 BT.
 Bearings and measurements made to true corner.
 Witness corner and BTs painted blue.

3498
 T35N R10E
 26/25
 35/36
 50 lks.
 CR-1-1976

Dated at Rhinelander, Wis., this 12th day of July, 1976

Signature: *Phillip T. Hansen* Title: Registered Land Surveyor (County Surveyor, Registered Land Surveyor, or other duly authorized official) Registration No. S-498

Office of Register of Deeds, County of Oneida, I hereby certify that the within instrument was filed in this office for record on the 23rd day of July, 1976 at 1:00 o'clock P.M.

Robert W. Haggan
 (Register of Deeds)

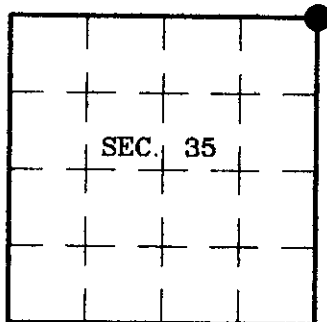
By: Deputy

351026000

U.S. PUBLIC LAND SURVEY MONUMENT RECORD

Note: This form is intended and designed to fulfill all requirements of Wisconsin Administrative Code, Chapter A-E 7.08 U.S. Public Land Survey Monument Record (3)(a)(b)(c)(d)(e)(f)(g)(h)(i). An additional sheet may be added if necessary to conform with said requirements.

(a) CORNER LOCATION: State Plane Coordinates
 Northeast Corner of Section 35 X
 Township 35 North Y
 Range 10 East Datum Base
 Town of Enterprise County of Oneida



(b) HISTORY OF ORIGINAL CORNER ESTABLISHMENT

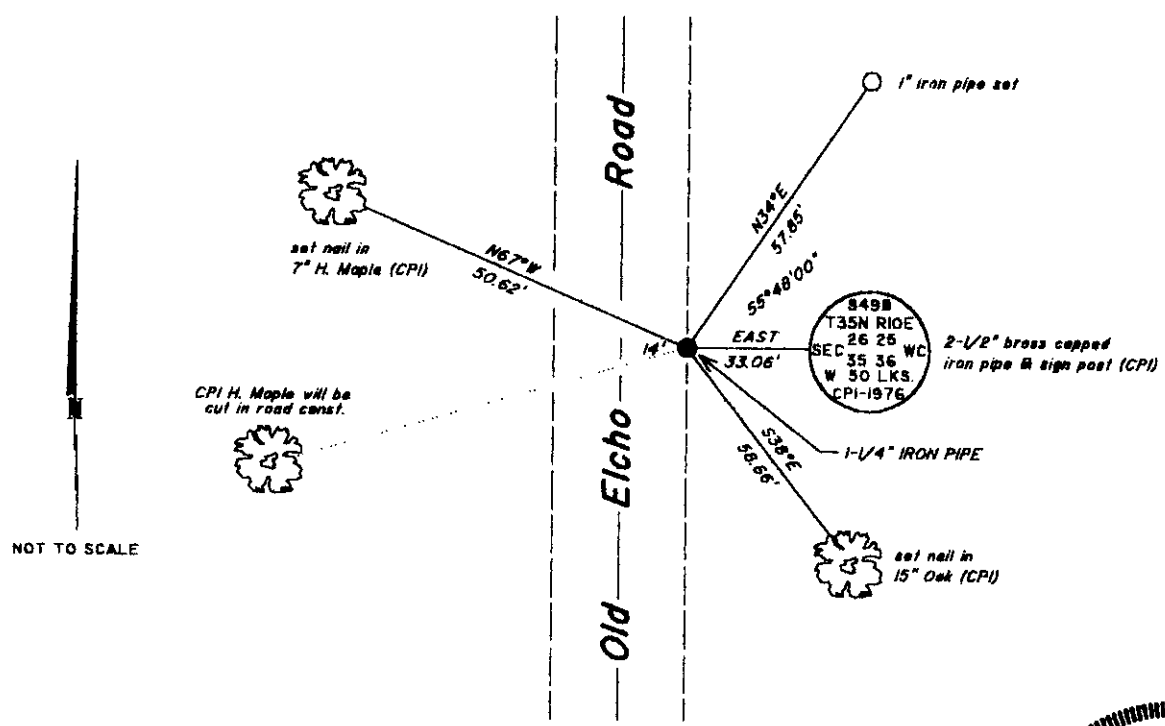
Original Surveyor: James L. Nowlin
 Date of Survey: Commenced 1865
 Completed 1865

Original B.T.s
 Birch 24° N71°E, 42 links
 Sugar 30° N29°W, 25 links

(b)(f)(g)(h) Description of monument found at this corner and if it was accepted, state all evidence (material, testimonial, occupational, plats, records, other monuments) used as a basis for accepting. If not accepted or if nothing was found, state evidence used as basis for establishing location. If reestablished through lost corner proportionate methods, indicate all monuments, distances and directions used to establish. Indicate type of monument and sign post found or set.

June 29, 1998: This is a retie of a previous USPLS Monument Record by Philip T. Hansen, RLS dated July 12, 1976 and filed in the office of the Oneida County Register of Deeds. I found Hansen's monument and accessories as described in his monument record. I accept his location as a true and faithful perpetuation of the original corner location and further perpetuate it as shown below.

(c)(d)(e) Plan view of corner with ties to at least 4 witness monuments. If in disagreement with previously established corner, show the distances between the two corners and also indicate the ties to the disputed.



(i) I, Jeffrey W. Austin, Registered Land Surveyor S-1885, hereby certify that the corner location on this record was determined by me or under my direction and control and that this U.S. Public Land Survey Monument Record is correct and complete to the best of my knowledge and belief.

[Handwritten Signature]
 Signature

8-3-98
 Date



INDEX NO. V-21

35 10 26 00 00
 AH