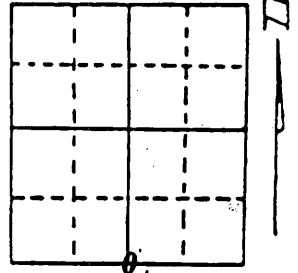
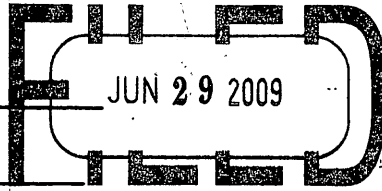


U.S. PUBLIC LAND SURVEY MONUMENT RECORD

Note: This form is intended and designed to fulfill all requirements of Wisconsin Administrative Code, Chapter A-E 7.08 U.S. Public Land Survey Monument Record (3) (a) (b) (c) (d) (e) (f) (g) (h) (i). An additional sheet may be added if necessary to conform with said requirements.

(a) Corner location: Township 35 North
 Range 10 East/West
 Town/City/Village ENTERPRISE
 County ONEIDA

REGISTER OF DEEDS OFFICE
 ONEIDA COUNTY, WIS.



Section 27

At _____ O'Clock _____ M
THOMAS H. LEIGHTON
 REGISTER OF DEEDS

(b) (f) (g) (h) Description of monument found at this corner and if it was accepted, state all evidence (material, testimonial, occupational, plats, records, other monuments) used as a basis for accepting. If not accepted or if nothing was found, state evidence used as basis for establishing location. If reestablished through lost corner proportionate methods, indicate all monuments, distances and directions used to establish. Indicate type of monument found or set and sign post.

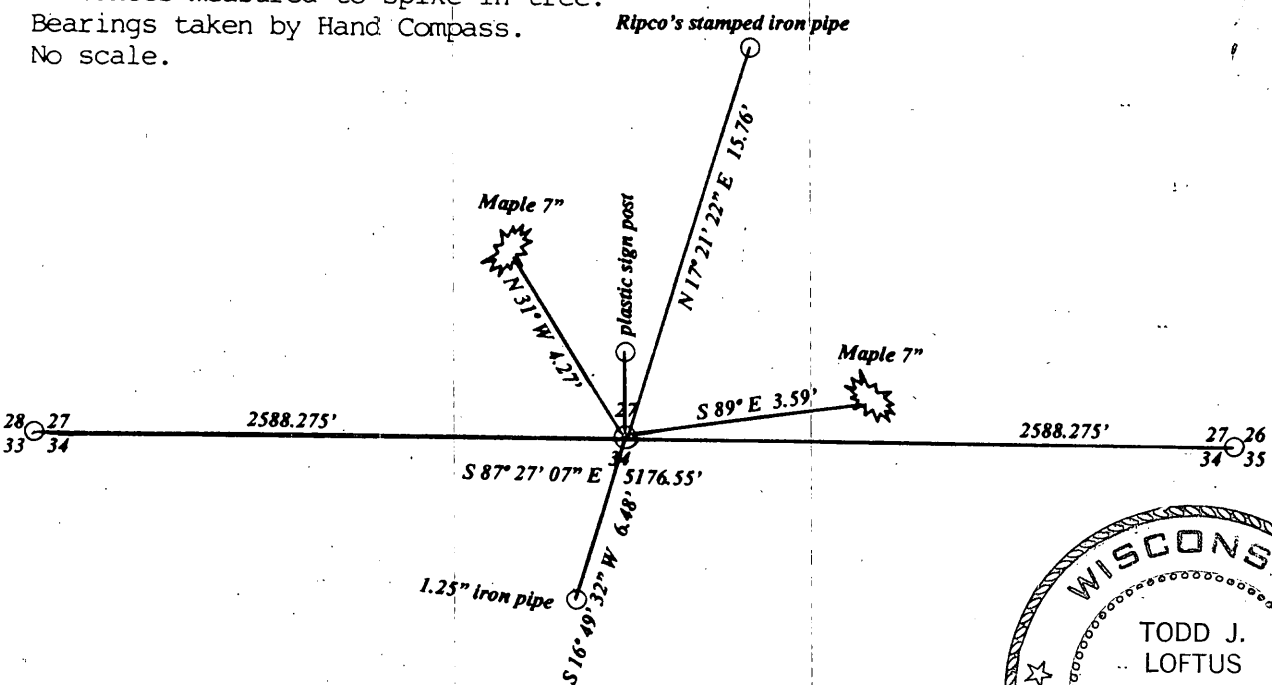
1865 JAMES L. NOWLIN established 1/4 cor. Set wood post and made BT's, Hemlock 20 S 62 W 10lks : Birch 18 N 24 E 20 lks.

June 20, 2006 I found Robert Winat's spike that he set at a midway split on the South line and his two Bearing trees from 1979. I also found Ripcos stamped Monument to the North and an iron pipe to the South which I believe to be William Kelly's.

I set a stamped Oneida County Monument in a earthen mound at the midway split of the South line section 27 by using the existing Southwest and Southeast section corners and the Oneida County Coordinate System. Robert Winat's iron spike is approximately 0.30' North of my location. The sketch below shows the accessories.

(c) (d) (e) Plan view of corner with ties to at least 4 witness monuments. If in disagreement with previously established corner, show the distances between the two corners and also indicate the ties to the disputed corner.

Distances measured to spike in tree.
 Bearings taken by Hand Compass.
 No scale.



(i) I, Todd J. Loftus
 (type or print name) certify that the corner location on this record was determined by me or under my direction and control and that this U.S. Public Land Survey Monument Record is correct and complete to the best of my knowledge and belief.

Todd J. Loftus Signature
June 29, 2006 Date



Index No. V 15

3510 27 0020
 Stamp