

# U.S. PUBLIC LAND SURVEY MONUMENT RECORD

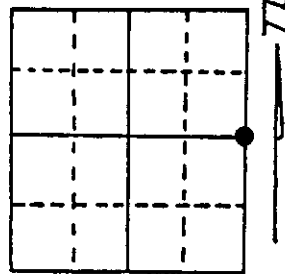
**Note:** This form is intended and designed to fulfill all requirements of Wisconsin Administrative Code, Chapter A-E 5.02, U.S. Public Land Survey Monument Record (3) (a) (b) (c) (d) (e) (f) (g) (h) (i). An additional sheet may be added if necessary to conform with said requirements.

(a) Corner location: Township 35N North

Range 11 East/West

Town/City/Village Schoepke

County Oneida



Section 1

(b) (f) (g) (h) Description of monument found at this corner and if it was accepted, state all evidence (material, testimonial, occupational, plats, records, other monuments) used as a basis for accepting. If not accepted or if nothing was found, state evidence used as basis for establishing location. If reestablished through lost corner proportionate methods, indicate all monuments, distances and directions used to establish.

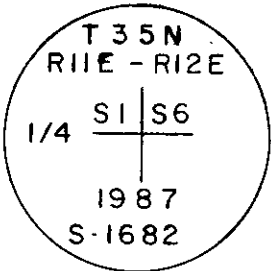
Reestablished 1/4 corner by retracement.

H.C. Lawrence survey notes states J. Macon recovered Section corner 1-12-6-7, T35N, R11&12E, 1/4 corner between Section 1 & 6 and S 1/16 between Sections 1 & 6 in 1948. H.C. Lawrence found same in 1957. P.T. Hansen recovered section corner and S 1/16 in 1975.

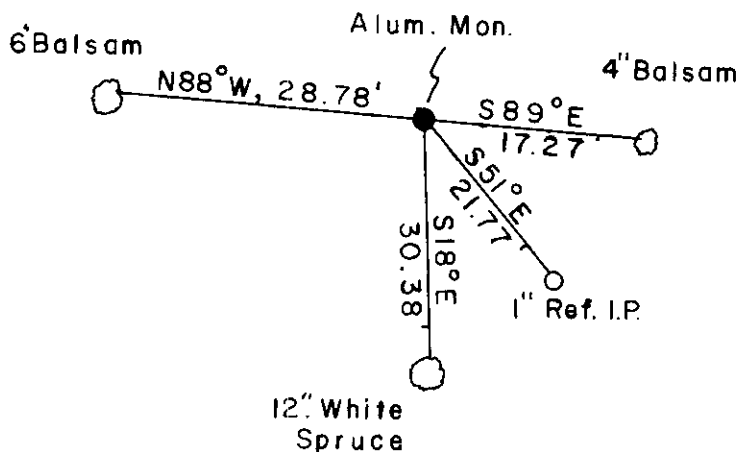
Reestablished 1/4 corner by running traverse from Section corner 1-12-6-7, T35N, R11 & 12E to S 1/16 between 1 & 6 for a computed bearing and distance N0 36'29"W 1326.98'. Set 1/4 corner N0 36'29"W 1326.98' of S1/16.

Richard Pitts, long time adjacent land owner, witnessed the re-established position stating it was in the same location as the old 1/4 corner.

(c) (d) (e) Plan view of corner with ties to at least 4 witness monuments. If in disagreement with previously established corner, show the distances between the two corners and also indicate the ties to the disputed corner.



2-1/4" Alum. Oneida Co. Monument  
7' Swamp point



(i) I, Glen Barker  
(type or print name) certify that the corner location on this record was determined by me or under my direction and control and that this U.S. Public Land Survey Monument Record is correct and complete to the best of my knowledge and belief.

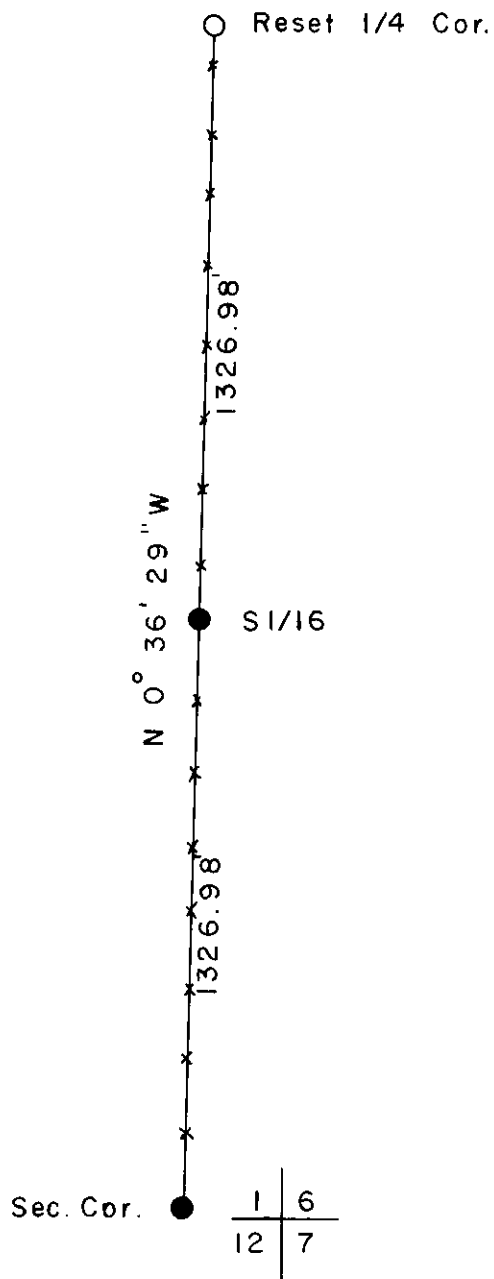
Glen Barker  
Signature

Feb 2, 1988  
Date



Index No. C 25

3511012000



REGISTER OF DEEDS OFFICE  
 ONEIDA COUNTY, WIS.

**FILED**

FEB 10 1988

At 8:00 O'clock

DORIS VERAGE KUSHN  
 REGISTER OF DEEDS