

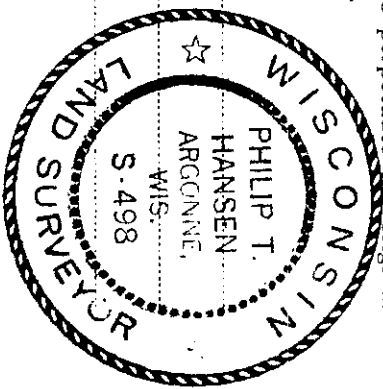
CERTIFIED LAND CORNER RESTORATION

Index No. **5-7**

State of Wisconsin

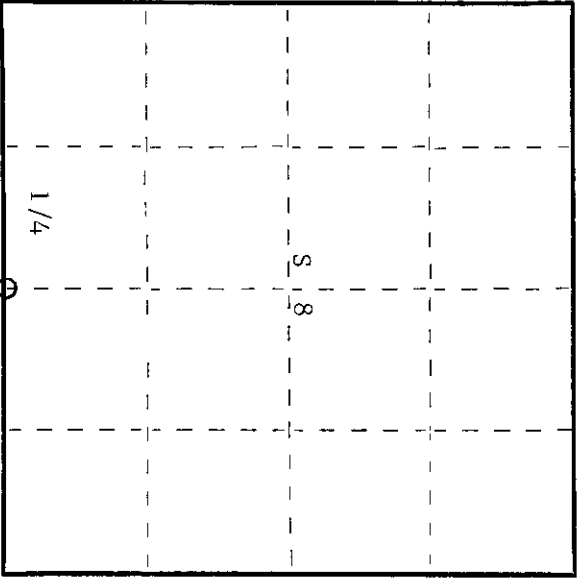
County of Oneida } ss.

I, Philip T. Hansen, do hereby certify that on the 15th day of May, 1975, I found evidence of the Quarter corner of Sections 8 and 17 Township 35, North, Range 11 East, Fourth Principal Meridian, as described hereon; and that from this evidence I established a new monument and accessories as described hereon to perpetuate the original location of this corner.



Resident witnesses:

T35N, R11E



History of original corner establishment:

Original corner established by Wm. E. Dougherty, Gov. Deputy Surveyor, in 1859, from which tamarack 10" bears N70W, 18 links and tamarack 12" bears S41E, 23 links. These bearing trees are duplication of bearing trees designated for 1 line between Sections 7 and 18. Apparently, bearing trees for 1/4 corner between Sections 8 and 17 are in error as this is on high land.

Corner re-established by D.H. Vaughan, County Surveyor, in 1916. Corner restored by H.C. Lawrence, Registered Land Surveyor, in 1954. Recovered 1/4 post. Burned hemlock post and a 1" iron pipe, from which sugar maple 14" bears S52W, 15-1/2 links. He set a 4" tamarack post in place of the old hemlock post and established NBT white ash 6" which bears N30W, 18-1/2 links. Recovered sugar maple BT 14" S52W, 15-1/2 links. Description of corner evidence found:

Recovered 4" tamarack post, squared and scribed 1/4S S8, 1/4S S17 rotted off and lying on ground. Also a 1" iron pipe sitting alongside of broken point in ground.

Recovered sugar maple 15" S54W 16 links scribed 1/4S BT.
White ash 6"(9") N30W 18.5 links scribing grown over.

Description of monument and accessories I established to perpetuate the original location of this corner. Set 2-1/2" iron pipe with brass cap in place of old recovered wooden point. Brass cap stamped -

S498
T35N, R11E
1/4 S18
S17
CPI-1975

Dated at Rhinelander, Wis., this 4th day of June, 1975.

Signature Philip T. Hansen Title Registered Land Surveyor Registration No. S-498
(County Surveyor, Registered Land Surveyor, or other duly authorized official)

Office of Register of Deeds, County of Oneida I hereby certify that the within instrument was filed in this office for record on the 1st day of October, 1975 at 3:00 o'clock P. M.

Dorva Verge Kuehnel
(Register of Deeds)

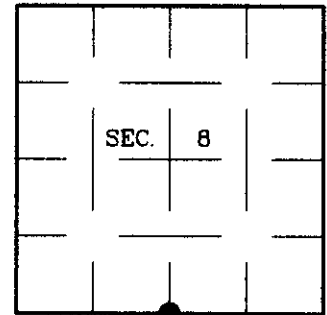
By: _____ Deputy

3511080020

U.S. PUBLIC LAND SURVEY MONUMENT RECORD

Note: This form is intended and designed to fulfill all requirements of Wisconsin Administrative Code, Chapter A-E 7.08 U.S. Public Land Survey Monument Record (3)(a)(b)(c)(d)(e)(f)(g)(h)(i). An additional sheet may be added if necessary to conform with said requirements.

(a) CORNER LOCATION: Plane Coordinates
 1/4 Corner common to Secs. 8 and 17 X:
 Township 35 North Y:
 Range 11 East, 4th Principal Meridian Datum:
 Town of Schoepke County of Oneida



(b) HISTORY OF ORIGINAL CORNER ESTABLISHMENT

Original Surveyor: William Daugherty
 Date of Survey: Commenced: July 25, 1859
 Completed: July 29, 1859

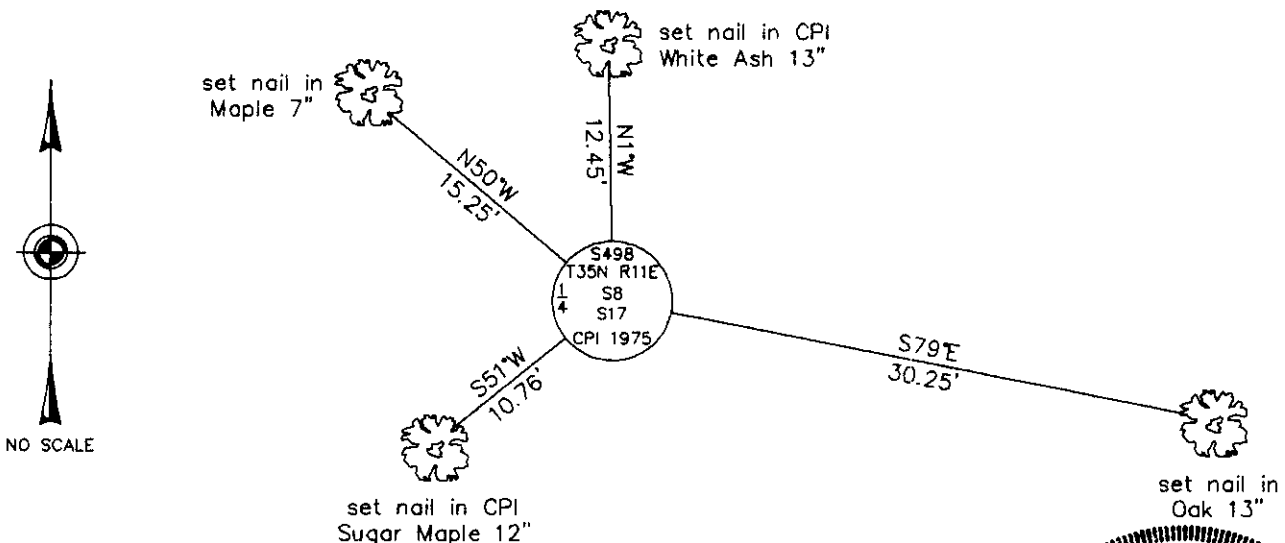
Original Accessories:
 Tamarack 10 N17°W 18 lks.
 Tamarack 12 S41°E 23 lks.

(b)(f)(g)(h) Description of monument found at this corner and if it was accepted, state all evidence (material, testimonial, occupational, plats, records, other monuments) used as a basis for accepting. If not accepted or if nothing was found, state evidence used as basis for establishing location. If reestablished through lost corner proportionate methods, indicate all monuments, distances and directions used to establish. Indicate type of monument and sign post found or set.

NOTE: This is a perpetuation of a previous USPLS Monument Record by Philip T. Hansen, RLS dated June 4, 1975 and filed in the office of the Oneida County Register of Deeds. A complete history of the corner can be found on the previous monument record. I accept the previous location as a true and faithful perpetuation or reestablishment of the original corner location and further perpetuate it as follows.

April 13, 2001: I found and accepted an iron post, 2-1/2 ins. diam., firmly set with a 2-1/2 ins. diam. CPI brass cap, 24 ins. above the ground surface, marked as shown below. I found or established accessories as shown below and set a plastic sign post bearing South, 1 ft. dist.

(c)(d)(e) Plan view of corner with ties to at least 4 witness monuments. If in disagreement with previously established corner, show the distances between the two corners and also indicate the ties to the disputed.



(i) I, Jeffrey W. Austin, Registered Land Surveyor No. S-1885, hereby certify that the corner location on this record was determined by me or under my direction and control and that this U.S. Public Land Survey Monument Record is correct and complete to the best of my knowledge and belief.

[Handwritten Signature]
 Signature

8-22-01
 Date



INDEX NO. J-7

3511080020