

CERTIFIED LAND CORNER RESTORATION

Index No. **T-25**

351120000

State of Wisconsin

County of Oneida } ss.

I Philip T. Hansen, do hereby

certify that on the 17th day

of June, 1977, I found

evidence of the Section

corner of 7, 18, 12, 13

Township 35, North, Range

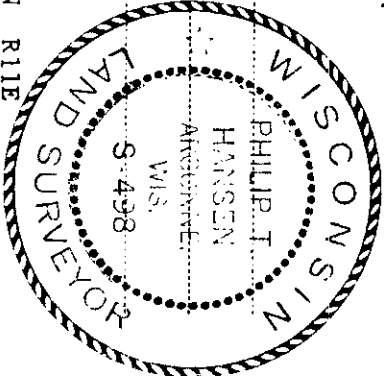
11 E, Fourth Principal Meridian,

as described hereon; and that from this evidence

I established a new monument and accessories

as described hereon to perpetuate the original

location of this corner.



Resident witnesses:

Glen Barker

Herb Wagoner

History of original corner establishment:
Original Corner established by Alfred Millard, Deputy Surveyor, in 1857, from which Lind 16" bears N55°E, 47 links; Lind 16" bears S39°W, 34 links.
No records of any subsequent surveys.

Description of corner evidence found:

Recovered a 20 d spike in vertical position 6" below the surface of road, spike was old and very rusted, at intersection of centerlines of Pitts Road and County Line road and Cemetery Road.
No evidence of any BFs.

Description of monument and accessories I established to perpetuate the original location of this corner.

Set 1 1/2" x 18" iron pipe in position of old spike, 5" below the surface.

Set a 2 1/2" Bernitsen A-1 Federal Monument, aluminum with magnet in cap and base for a witness corner 50 links west. Cap stamped:

Monument projects 24" above ground.

NBT - Sugar 6" S44°E, 83.6 links, scribed SC BT.

B.O. - Sign post (Pitts & Cemetery Rd) N62°E, 42.5 links

Boulder - with X on top, N76°W, 48.7 links.

No other suitable trees for BT.

R T35N
E 11 121 7 R
E 13 13 18 E 12
E - 50 lks to Cor.
S498-1977

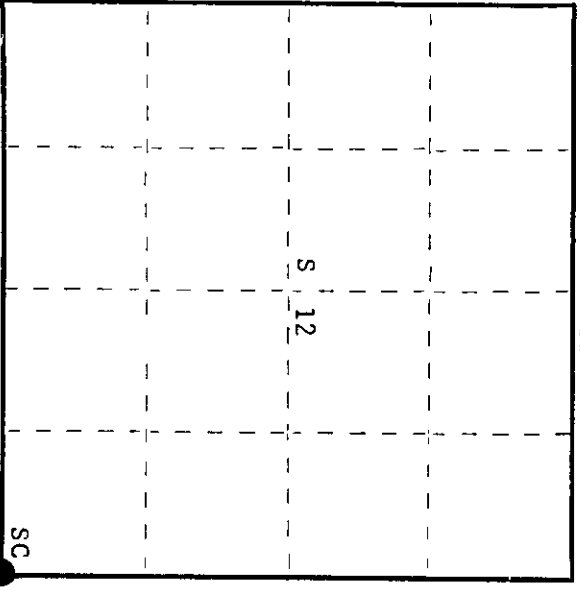
Dated at Rhineland, Wis., this 20th day of June, 1977

Signature Philip T. Hansen Title Registered Land Surveyor Registration No. S-498
(County Surveyor, Registered Land Surveyor, or other duly authorized official)

Office of Register of Deeds, County of Oneida
Instrument was filed in this office for record on the 3rd day of June, 1977
at 9:20 o'clock A. M. I hereby certify that the within

Sara Savage Kuehn
(Register of Deeds)

By Joseph M. Berner Deputy



○ = Corner monument restored.

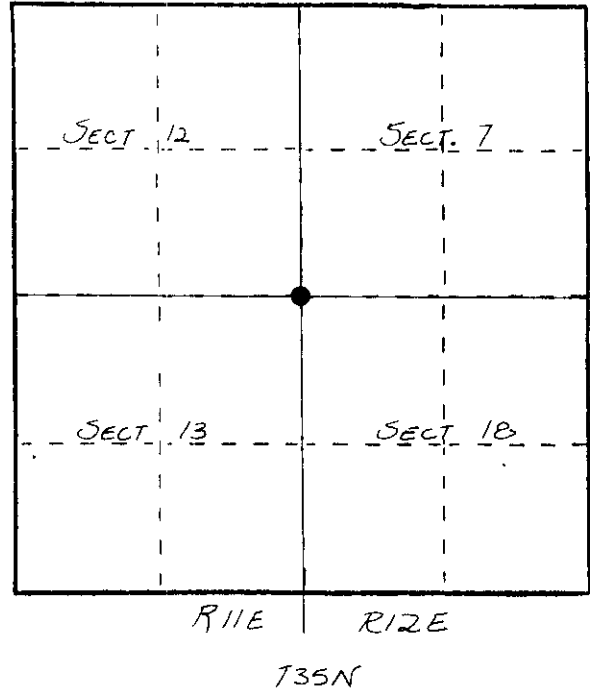
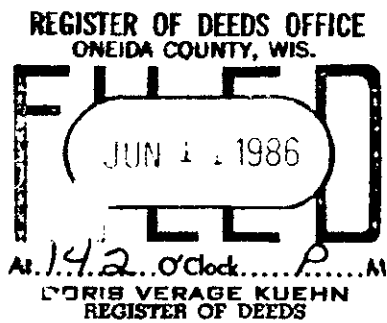
U. S. PUBLIC LAND SURVEY MONUMENT RECORD

INSTRUCTIONS: This record shall show the location of the corner and shall include all of the following nine elements (a through i).

- (a) Identify the corner by reference to the U.S. public land survey system.

○ = Corner monument restored.

ORIGINAL CORNER ESTABLISHED BY ALFRED MILLARD
IN 1857 CORNER RE-ESTABLISHED BY
H.C. LAWRENCE IN 1958.



- (b) Describe any record evidence, monument evidence, occupational evidence, testimonial evidence or any other material evidence you considered, and whether the monument was found or placed.

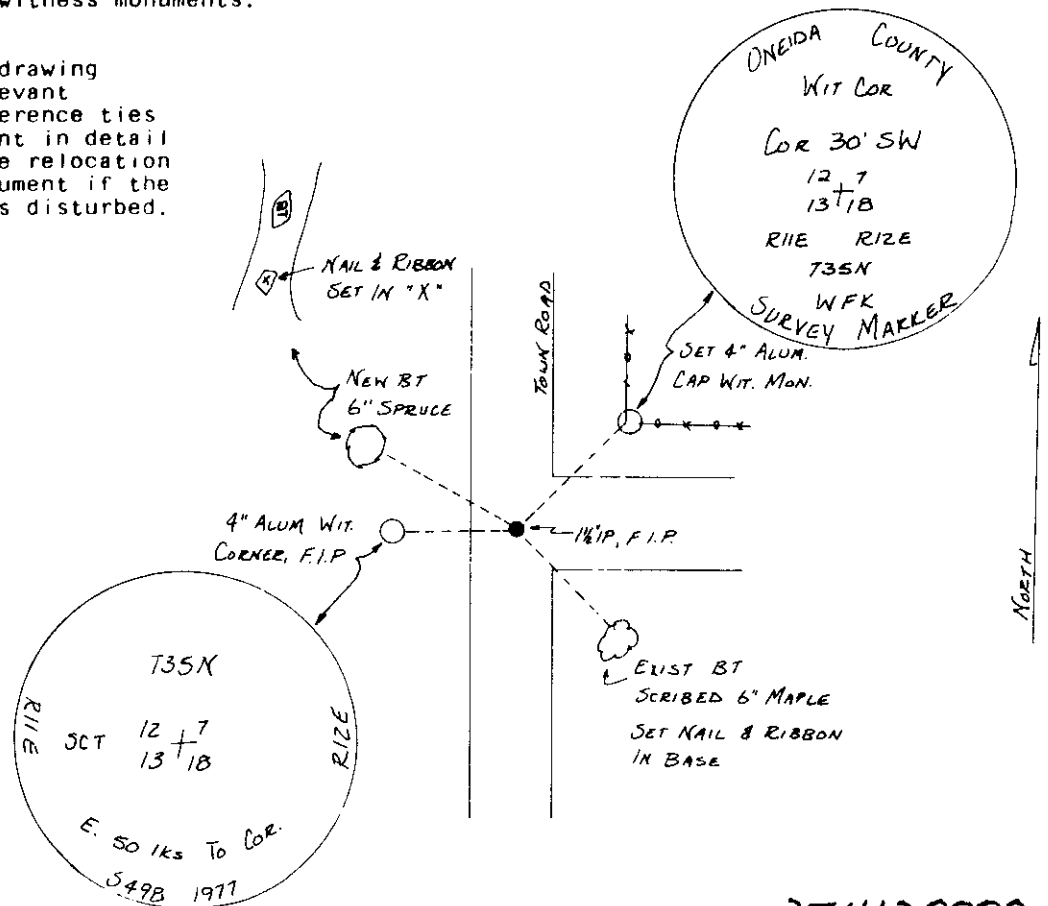
CORNER RECOVERED BY PHILIP HANSEN DURING SURVEY FOR CONSOLIDATED PAPERS INC. IN 1977.*

1983: FOUND IN PLACE - 1 1/2" IRON PIPE IN ROAD & 4" ALUMINUM WITNESS MONUMENT SET BY HANSEN & B
SET 4" ALUMINUM LAP WITNESS MONUMENT, SCRIBED NEW BT, SET NAIL & RIBBON
IN EXISTING BT.

* HANSEN RECOVERED SPIKE IN VERTICAL POSITION 6" BELOW SURFACE OF ROAD. NO BT'S FOUND.
SET 1 1/2" x 18" IRON PIPE 5" BELOW SURFACE. SET 2 1/2" BERTHSEN MON. 50 YDS W. OF CORNER

- (c) In the plan view drawing below, provide reference ties to at least 4 witness monuments, or, if the location is within a municipality, to at least 2 witness monuments. (Witness monuments shall be made of concrete, natural stone, iron or other equally durable material.) Describe witness monuments.

- (d) Show a plan view drawing depicting the relevant monuments and reference ties which is sufficient in detail to enable accurate relocation of the corner monument if the corner monument is disturbed. Indicate north.



3511120000

J-25

(e) Describe any material discrepancy between the location of the corner as restored or reestablished and the location of that corner as previously restored or reestablished by distance and direction. Show the discrepancy on the plan view drawing under (d), above. Show the distances between the corner as previously restored or reestablished and (1) the corner as restored or reestablished, and (2) to at least 2 of the witness monuments shown on the drawing in (d), above.

NONE

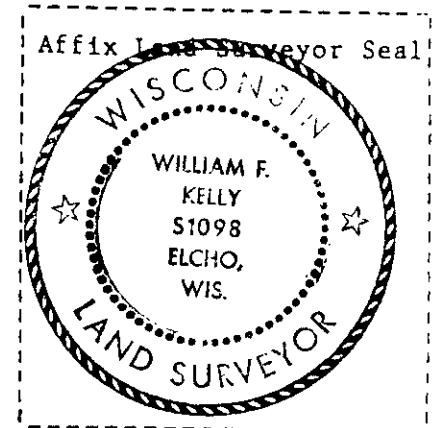
(f) Was the corner restored through acceptance of (1) an obliterated evidence location, or, (2) a found perpetuated location?

(2)

(g&h) Was the corner reestablished through lost corner proportionate methods? If so, show the method, including the directions and distances to other public land survey corners used as evidence or used for proportioning in determining the corner location?

No

(1) I, WILLIAM F. KELLY
(type or print name) certify that the corner location shown on this record was determined by me or under my direction and control and that this U.S. Public Land Survey Monument Record is correct and complete to the best of my knowledge and belief.

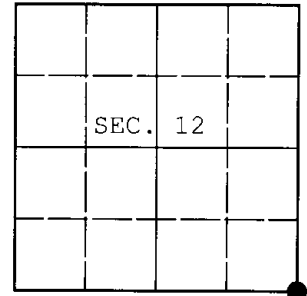


William F. Kelly 2-8-84
Signature Date

U.S. PUBLIC LAND SURVEY MONUMENT RECORD

Note: This form is intended and designed to fulfill all requirements of Wisconsin Administrative Code, Chapter A-E 7.08 U.S. Public Land Survey Monument Record (3) (a) (b) (c) (d) (e) (f) (g) (h) (i). An additional sheet may be added if necessary to conform with said requirements.

(a) CORNER LOCATION: WISCORS - Oneida County
 Cor. of Secs. 7, 12, 13 & 18 N: 123,064.80 USft
 Township 35 North E: 357,633.95 USft
 Range 11&12 East of the 4th P.M. Datum: NAD 1983(2011)
 Town of Schoepke County of Oneida



(b) HISTORY OF ORIGINAL CORNER ESTABLISHMENT

Original Surveyor: Alfred Millard Original Accessories:
 Date of Survey: Commenced: May, 1858
 Completed: June, 1858
 spruce 12" N60°W, 35 lks.
 cherry 14" N71°E, 35 lks.
 cherry 10" S57°E, 48 lks.
 y. birch 14" S59°W, 61 lks.

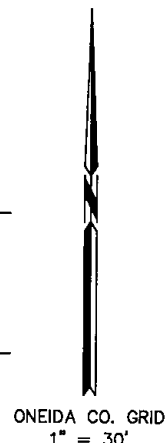
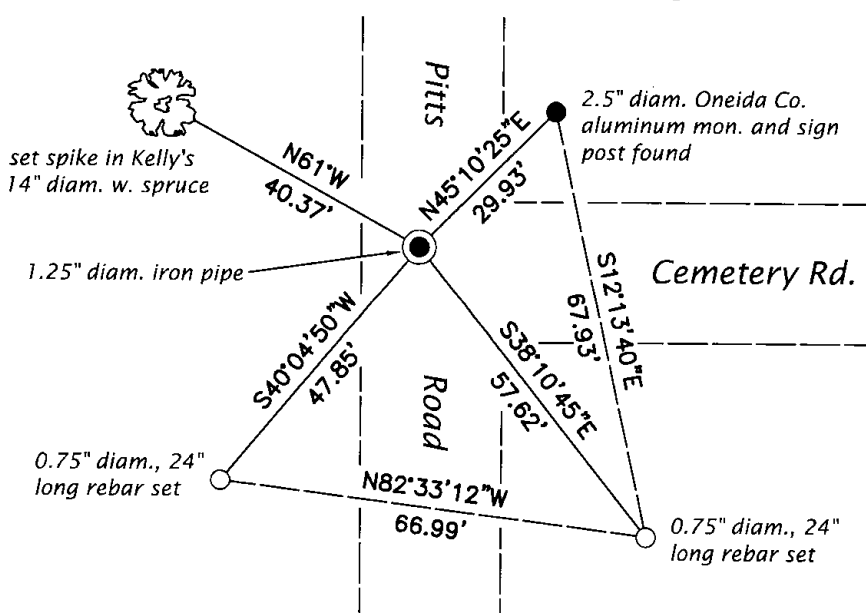
(b) (f) (g) (h) Description of monument found at this corner and if it was accepted, state all evidence (material, testimonial, occupational, plats, records, other monuments) used as a basis for accepting. If not accepted or if nothing was found, state evidence used as basis for establishing location. If re-established through lost corner proportionate methods, indicate all monuments, distances and directions used to establish. Indicate type of monument and sign post found or set.

NOTE: This is a perpetuation of a previous USPLS Monument Record by William F. Kelly, RLS dated February 8, 1984 and filed in the office of the Oneida County Register of Deeds. A complete history of the corner can be found on the previous monument record. I accept the previous location as a true and faithful perpetuation or reestablishment of the original corner location and further perpetuate it as follows.

May 21, 2016: I found and accepted the record monument, a 1.25" diam. iron pipe 3" beneath the pavement surface. The corner is 2 ft. West of and 4 ft. North of the centerline intersection. I was unable to recover the maple bearing tree and the westerly reference monument. I found or established accessories as shown below.

The coordinates shown were derived from two independent RTK observations of the corner point and are referenced to the WISCORS GNSS Network.

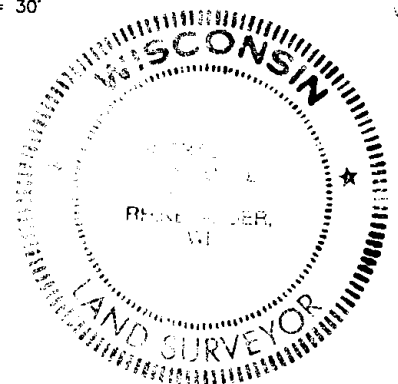
(c) (d) (e) Plan view of corner with ties to at least 4 witness monuments. If in disagreement with previously established corner, show the distances between the two corners and also indicate the ties to the disputed.



REGISTER OF DEEDS OFFICE
 ONEIDA COUNTY
 FILED

DEC 28 2016

AT _____ O'CLOCK _____ M
 KYLE J. FRANSON
 REGISTER OF DEEDS



(i) I, Michael J. Romportl, Professional Land Surveyor No. S-1624, hereby certify that the corner location on this record was determined by me or under my direction and control and that this U.S. Public Land Survey Monument Record is correct and complete to the best of my knowledge and belief.

Michael J. Romportl 12/23/2016
 Signature Date